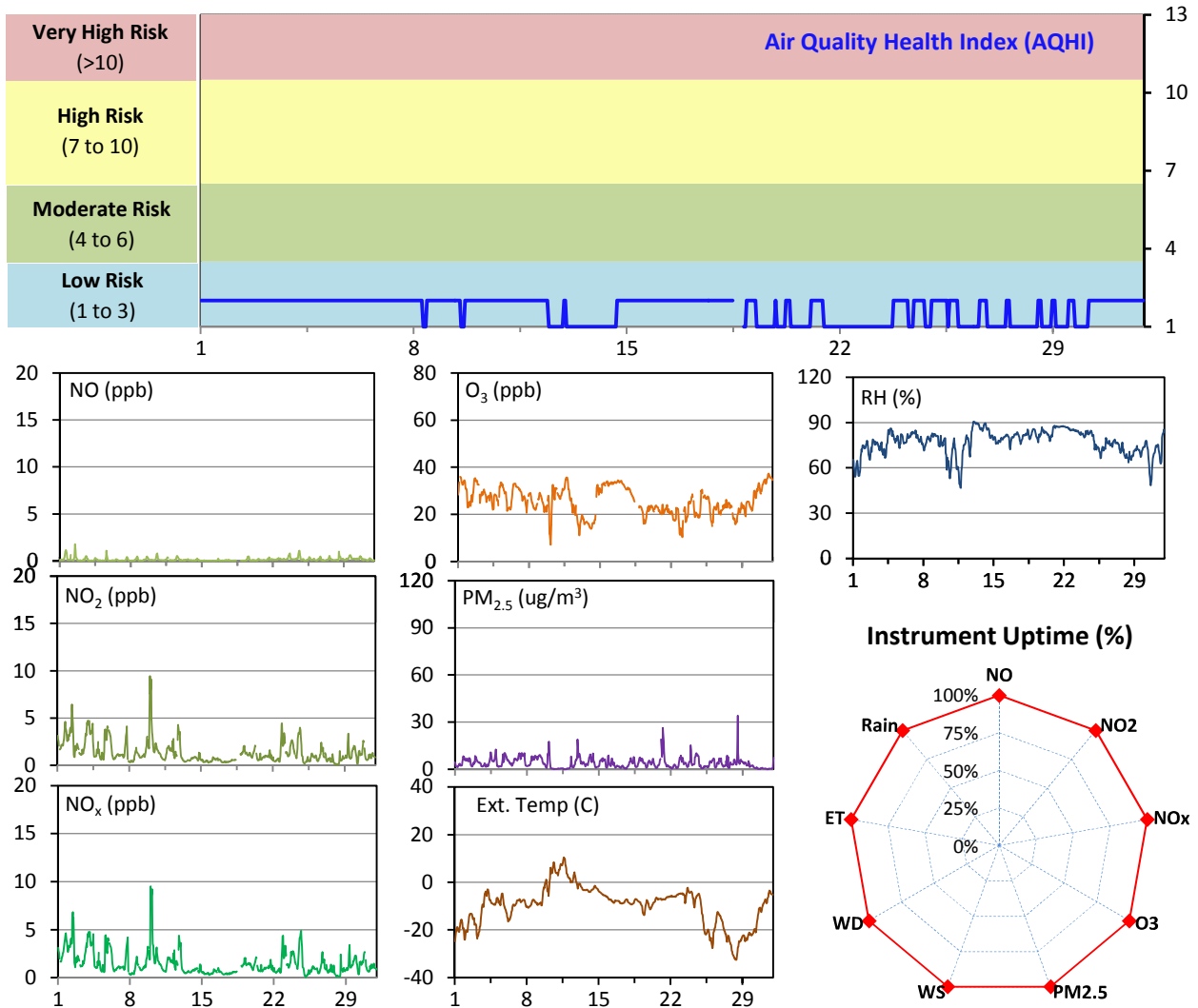


WYAMZ Meadow Lake Station - December 2014 Summary Report

Pollutants		Month Records		24-Hour Records				1-Hour Records			
Name	Conc. Unit	Avg. Conc.	Uptime	Maximum		SAAQS Objective	Exceed Days	Maximum		SAAQS Objective	Exceed Hours
				Conc.	Time			Conc.	Time		
NO	ppb	0.1	99.9%	0.3	Dec-24	-	-	1.8	Dec-02 12:00	-	-
NO ₂	ppb	1.4	99.9%	3.2	Dec-10	-	-	9.4	Dec-10 00:00	212	0
NO _x	ppb	1.5	99.9%	3.4	Dec-10	-	-	9.5	Dec-10 00:00	-	-
O ₃	ppb	26	99.9%	35	Dec-31	-	-	37	Dec-31 14:00	82	0
PM _{2.5}	ug/m3	4	99.9%	7	Dec-7	30	0	34	Dec-28 12:00	-	-

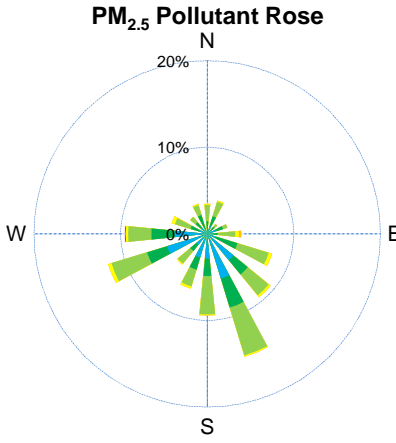
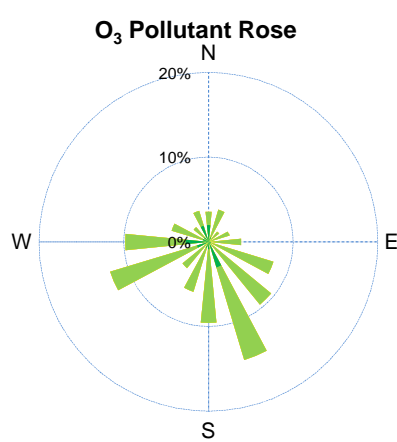
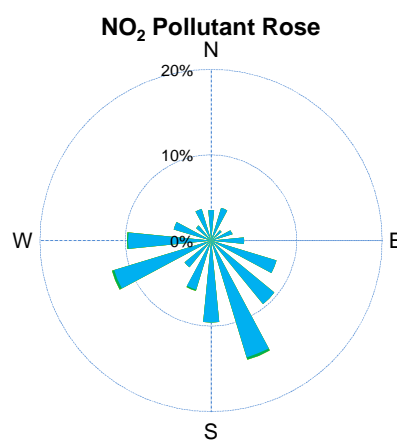
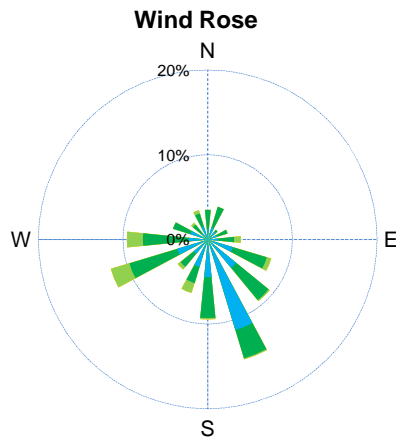
SAAQS: Saskatchewan Ambient Air Quality Standards



Monthly Update

- *All data has been slope, intercept, and baseline corrected. Data may change after validation process.
- *All compliance parameters were within the Saskatchewan Ambient Air Quality Standards.
- *All compliance parameters were greater than 90% operational.
- *There is one hour of data for all parameters flagged as "power failure" on Dec 21, due to a power disruption.
- *Routine quarterly calibration took place on Dec 18.

WYAMZ Meadow Lake Station - December 2014 Summary Report

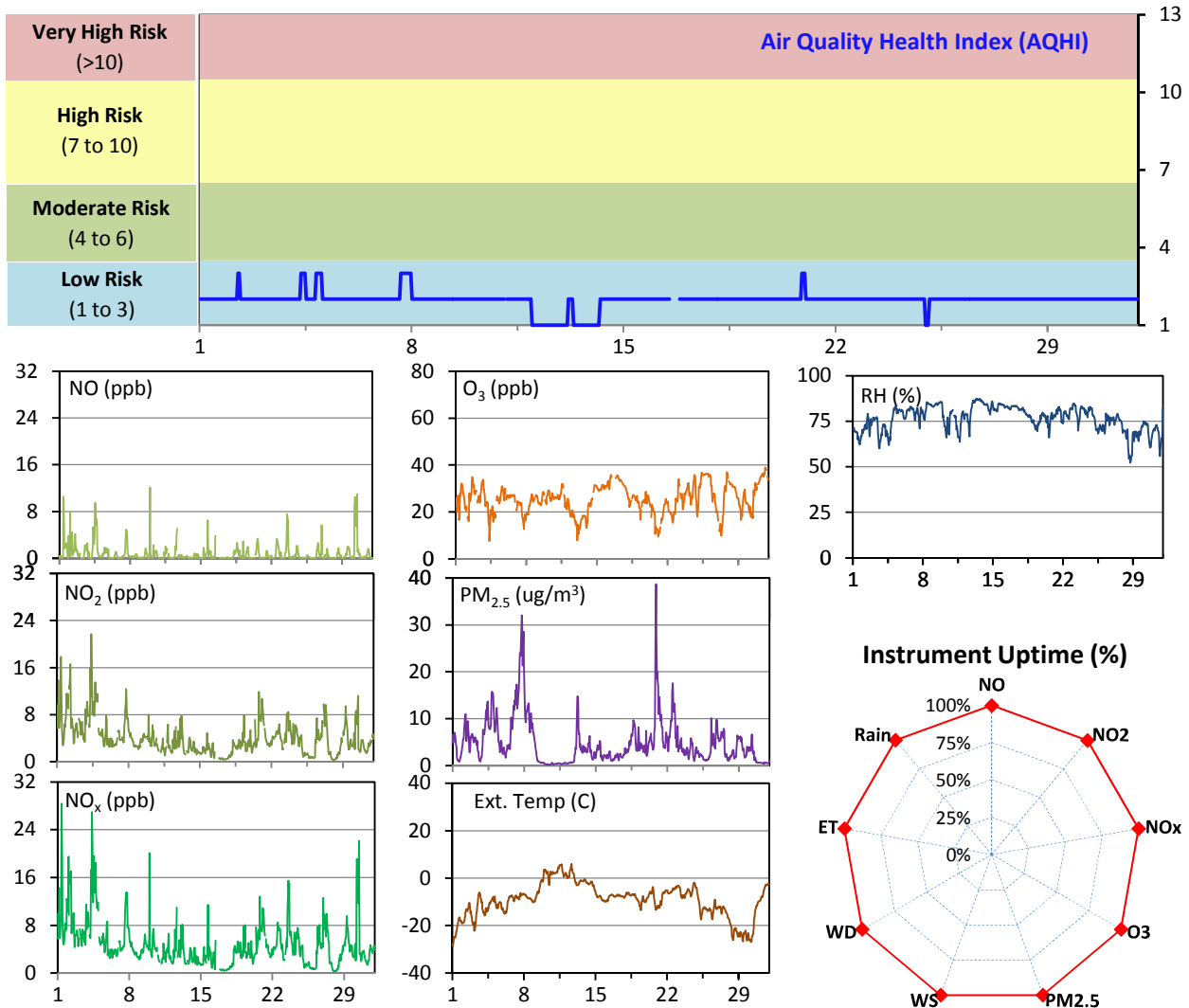


Parameters	Unit	Color Code for Wind Spd & Pollutant Conc. Class					
Wind Speed	m/s	0.3 ≤ WS < 1.4	1.4 ≤ WS < 3.1	3.1 ≤ WS < 7.8	7.8 ≤ WS < 10.8	10.8 ≤ WS < 13.6	WS ≥ 13.6
NO ₂	ppb	0 ≤ C < 5	5 ≤ C < 15	15 ≤ C < 30	30 ≤ C < 100	100 ≤ C < 212	C ≥ 212
O ₃	ppb	0 ≤ C < 10	10 ≤ C < 20	20 ≤ C < 40	40 ≤ C < 60	60 ≤ C < 82	C ≥ 82
PM _{2.5}	ug/m ³	0 ≤ C < 2	2 ≤ C < 4	4 ≤ C < 10	10 ≤ C < 20	20 ≤ C < 30	C ≥ 30

WYAMZ Unity Station - December 2014 Summary Report

Pollutants		Month Records		24-Hour Records				1-Hour Records			
Name	Conc. Unit	Avg. Conc.	Uptime	Maximum		SAAQS Objective	Exceed Days	Maximum		SAAQS Objective	Exceed Hours
				Conc.	Time			Conc.	Time		
NO	ppb	0.8	99.6%	3.0	Dec-30	-	-	12.1	Dec-09 23:00	-	-
NO ₂	ppb	4.0	99.6%	10.7	Dec-4	-	-	21.7	Dec-04 08:00	212	0
NO _x	ppb	4.8	99.6%	13.5	Dec-4	-	-	28.4	Dec-01 09:00	-	-
O ₃	ppb	25	99.7%	36	Dec-31	-	-	39	Dec-31 16:00	82	0
PM _{2.5}	ug/m3	5	99.7%	20	Dec-7	30	0	39	Dec-20 21:00	-	-

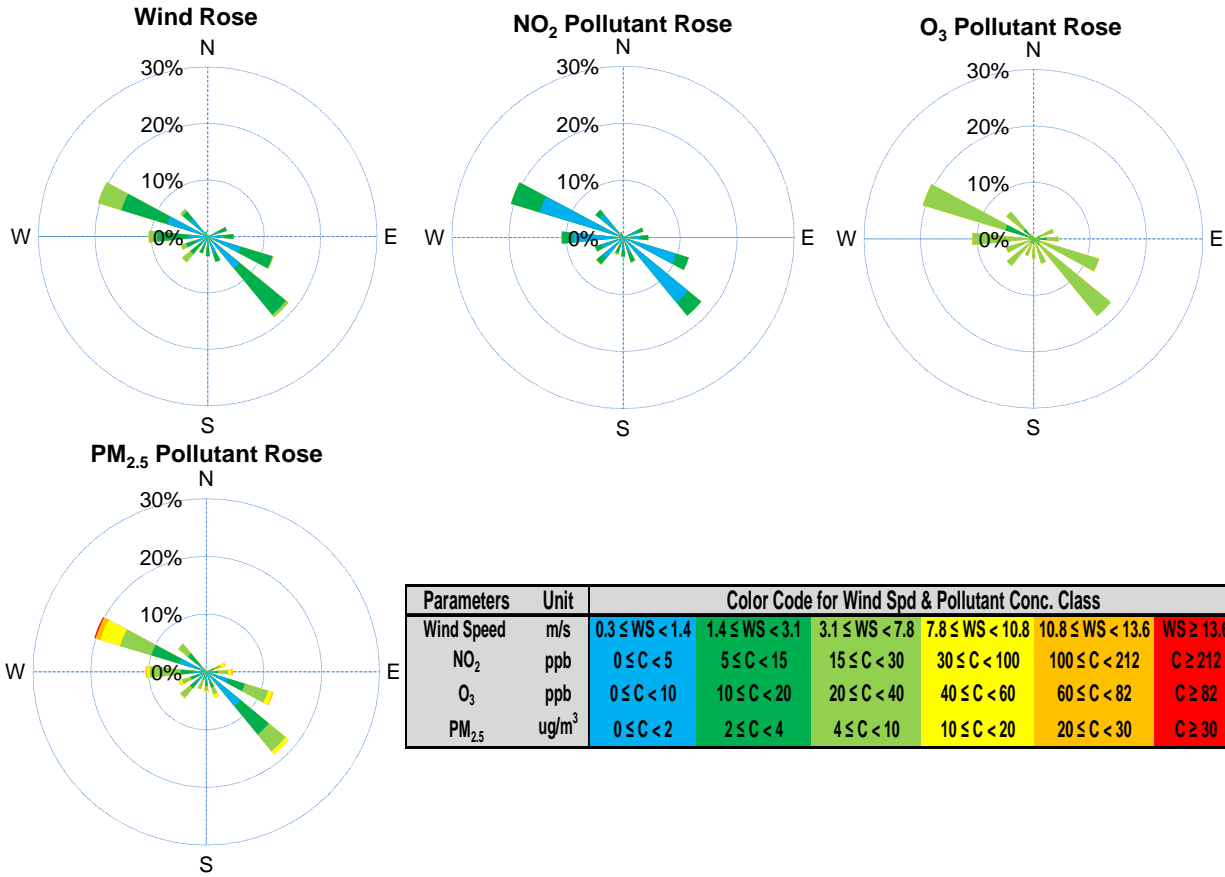
SAAQS: Saskatchewan Ambient Air Quality Standards



Monthly Update

- *All data has been slope, intercept, and baseline corrected. Data may change after validation process.
- *All compliance parameters were within the Saskatchewan Ambient Air Quality Standards.
- *All compliance parameters are above 90% operational.
- *3 hours of NO/NO₂/NO_x data, and 2 hours for all other parameters is flagged as "power failure" on Dec 11 due to a power disruption.
- *Routine quarterly calibration took place on Dec 16.

WYAMZ Unity Station - December 2014 Summary Report

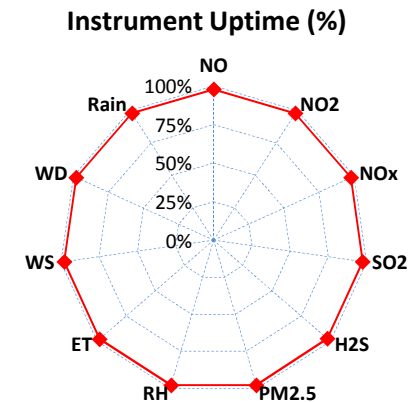
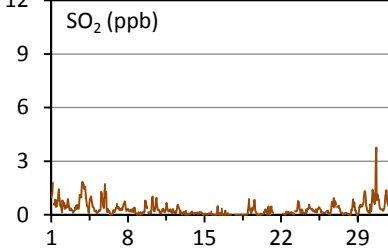
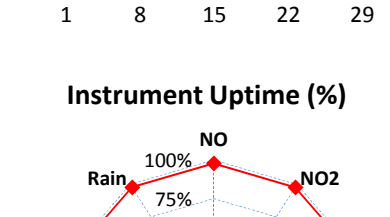
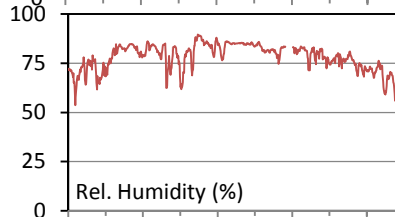
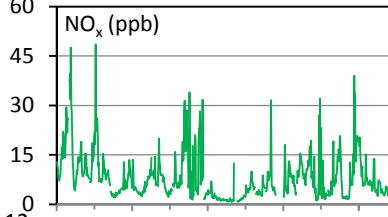
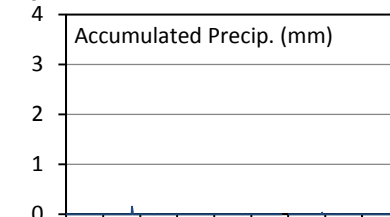
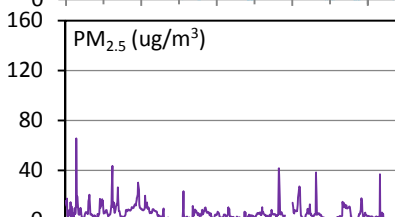
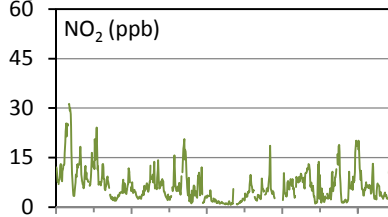
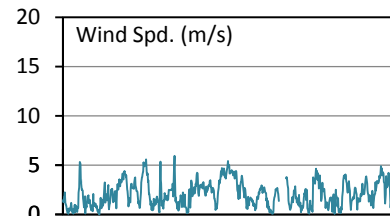
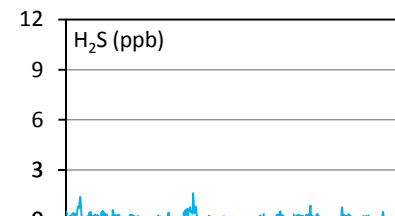
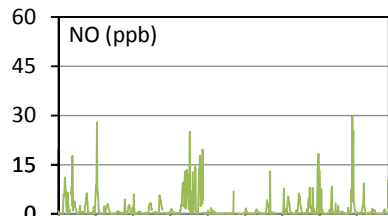
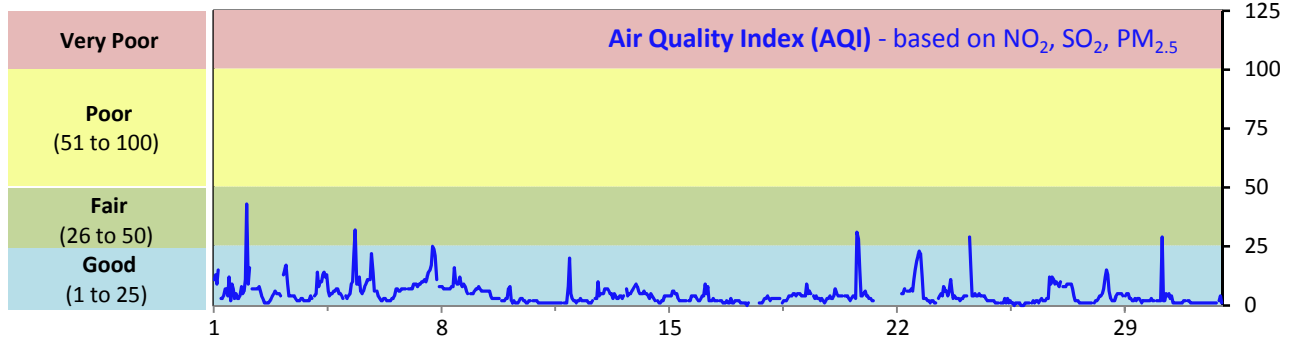


Parameters	Unit	Color Code for Wind Spd & Pollutant Conc. Class					
Wind Speed	m/s	0.3 ≤ WS < 1.4	1.4 ≤ WS < 3.1	3.1 ≤ WS < 7.8	7.8 ≤ WS < 10.8	10.8 ≤ WS < 13.6	WS ≥ 13.6
NO ₂	ppb	0 ≤ C < 5	5 ≤ C < 15	15 ≤ C < 30	30 ≤ C < 100	100 ≤ C < 212	C ≥ 212
O ₃	ppb	0 ≤ C < 10	10 ≤ C < 20	20 ≤ C < 40	40 ≤ C < 60	60 ≤ C < 82	C ≥ 82
PM _{2.5}	ug/m ³	0 ≤ C < 2	2 ≤ C < 4	4 ≤ C < 10	10 ≤ C < 20	20 ≤ C < 30	C ≥ 30

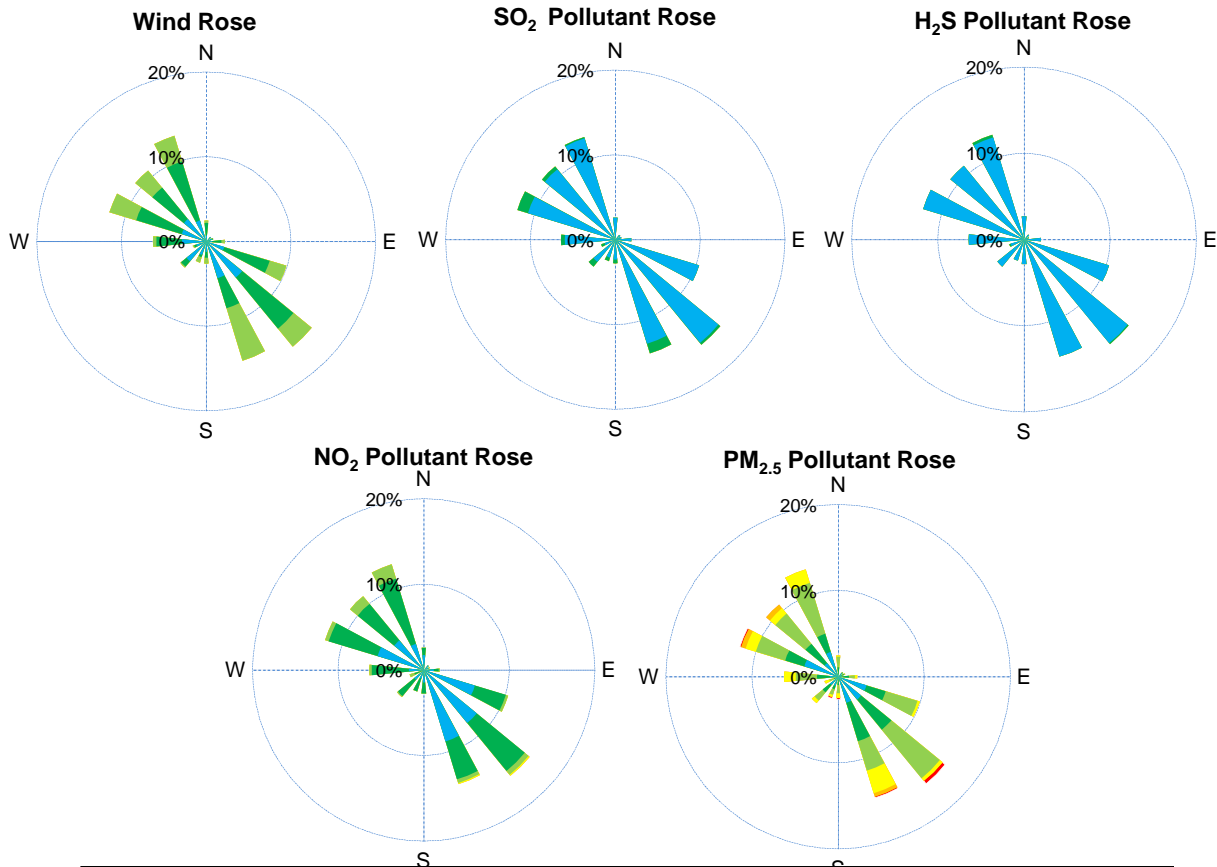
WYAMZ Maidstone Station - December 2014 Summary Report

Pollutants		Month Records		24-Hour Records				1-Hour Records			
Name	Conc. Unit	Avg. Conc.	Uptime	Maximum		SAAQS	Exceed Days	Maximum		SAAQS	Exceed Hours
				Conc.	Time	Objective		Conc.	Time	Objective	
NO	ppb	1.7	97.7%	6.6	Dec-13	-	-	29.8	Dec-28 13:00	-	-
NO ₂	ppb	6.6	97.7%	15.7	Dec-2	-	-	31.3	Dec-02 05:00	212	0
NO _x	ppb	8.3	97.7%	18.3	Dec-2	-	-	48.5	Dec-04 14:00	-	-
SO ₂	ppb	0.3	97.4%	0.9	Dec-30	57	0	3.8	Dec-30 16:00	172	0
H ₂ S	ppb	0.2	97.4%	0.6	Dec-12	3.6	0	1.6	Dec-12 19:00	10.8	0
PM _{2.5}	ug/m3	5	97.8%	14	Dec-7	30	0	66	Dec-02 00:00	-	-

SAAQS: Saskatchewan Ambient Air Quality Standards



WYAMZ Maidstone Station - December 2014 Summary Report



Parameters	Unit	Color Code for Wind Spd & Pollutant Conc. Class					
Wind Speed	m/s	0.3 ≤ WS < 1.4	1.4 ≤ WS < 3.1	3.1 ≤ WS < 7.8	7.8 ≤ WS < 10.8	10.8 ≤ WS < 13.6	WS ≥ 13.6
SO ₂	ppb	0 ≤ C < 1	1 ≤ C < 5	5 ≤ C < 10	10 ≤ C < 57	57 ≤ C < 172	C ≥ 172
NO ₂	ppb	0 ≤ C < 5	5 ≤ C < 15	15 ≤ C < 30	30 ≤ C < 100	100 ≤ C < 212	C ≥ 212
H ₂ S	ppb	0 ≤ C < 1	1 ≤ C < 3.6	3.6 ≤ C < 5	5 ≤ C < 8	8 ≤ C < 10.8	C ≥ 10.8
PM _{2.5}	ug/m ³	0 ≤ C < 2	2 ≤ C < 4	4 ≤ C < 10	10 ≤ C < 20	20 ≤ C < 30	C ≥ 30

Monthly Update

*All data has been slope, intercept, and baseline corrected. Data may change after validation process.

*All compliance parameters were within the Saskatchewan Ambient Air Quality Standards.

*All compliance parameters are above 90% operational.

*There is 18 hours of SO₂/H₂S data, and 16 hours for all other parameters, flagged as "power failure" on Dec 21. SO₂ and H₂S are slower to recover following power disruptions.

*Routine quarterly calibration took place on Dec 17.

