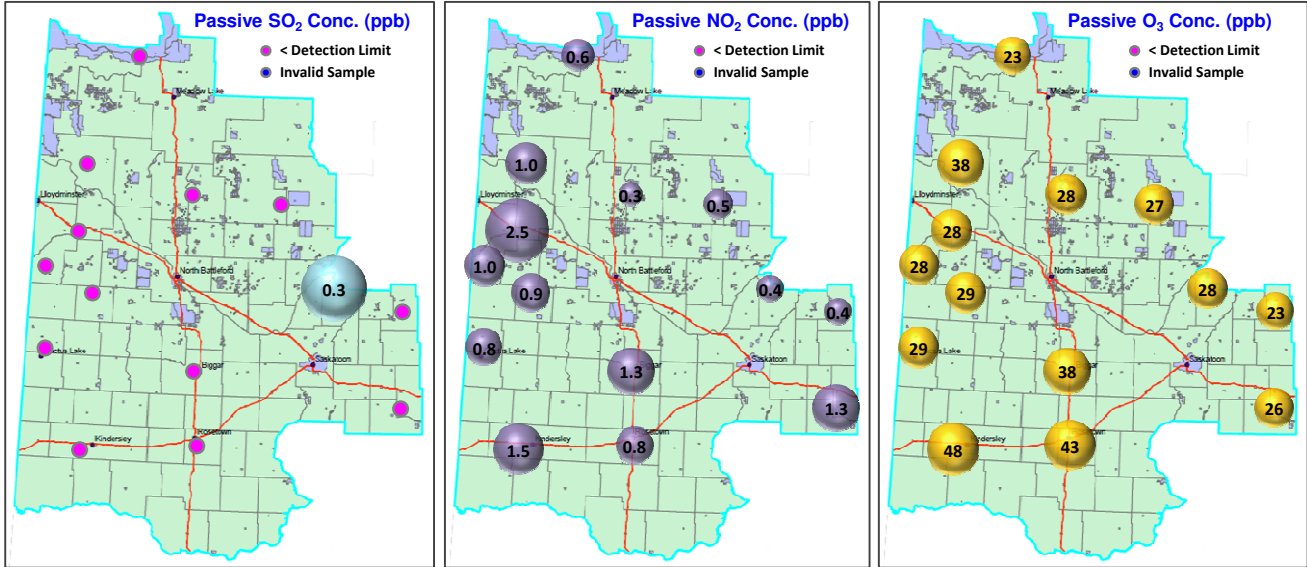


Western Yellowhead Air Management Zone - August 2013 Passive Report



Station No.	Station Name	30-Days Average Concentration			Station Coordinates		
		SO ₂ ppb	NO ₂ ppb	O ₃ ppb	Latitude degree	Longitude degree	Elevation m
1	Young	< 0.1	1.3	26	51.780	-105.767	522
2	Cudworth	< 0.1	0.4	23	52.498	-105.747	583
3	Laird	0.3	0.4	28	52.668	-106.496	522
4	Shell Lake	< 0.1	0.5	27	53.294	-107.074	564
5	Cater	< 0.1	0.3	28	53.366	-108.046	719
6	St. Walburg	< 0.1	1.0	38	53.598	-109.200	638
7	Maidstone	< 0.1	2.5	28	53.099	-109.297	728
8	Neilburg	< 0.1	1.0	28	52.842	-109.657	671
9	Denzil	< 0.1	0.8	29	52.231	-109.663	683
10	Wilbert	< 0.1	0.9	29	52.639	-109.145	675
11	Biggar	< 0.1	1.3	38	52.056	-108.035	728
13	Dorintosh	< 0.1	0.6	23	54.398	-108.628	486
14	Kindersley	< 0.1	1.5	48	51.475	-109.285	547
15	Rosetown	< 0.1	0.8	43	51.504	-108.000	611

< : Below Detection Limit
 F : Failure Sample
 - : Sample Not Collected
 NA : Missing sample or no data