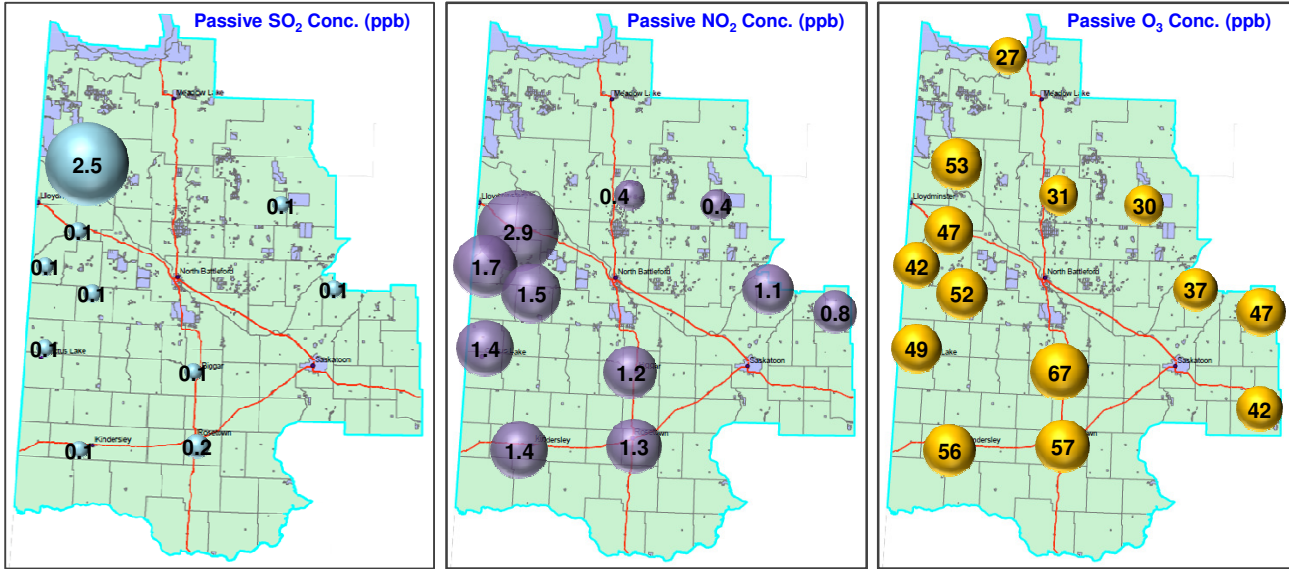


# Western Yellowhead Air Management Zone - June 2013 Passive Report



Station No.	Station Name	30-Days Average Concentration			Station Coordinates		
		SO <sub>2</sub> ppb	NO <sub>2</sub> ppb	O <sub>3</sub> ppb	Latitude degree	Longitude degree	Elevation m
1	Young	< 0.1	< 0.1	41.9	51.780	-105.767	522
2	Cudworth	< 0.1	0.8	47.4	52.498	-105.747	583
3	Laird	0.1	1.1	37.2	52.668	-106.496	522
4	Shell Lake	0.1	0.4	29.9	53.294	-107.074	564
5	Cater	< 0.1	0.4	30.5	53.366	-108.046	719
6	St. Walburg	2.5	< 0.1	52.9	53.598	-109.200	638
7	Maidstone	0.1	2.9	46.5	53.099	-109.297	728
8	Neilburg	0.1	1.7	42.1	52.842	-109.657	671
9	Denzil	0.1	1.4	48.8	52.231	-109.663	683
10	Wilbert	0.1	1.5	52.2	52.639	-109.145	675
11	Biggar	0.1	1.2	66.5	52.056	-108.035	728
13	Dorintosh	NA	NA	27.2	54.398	-108.628	486
14	Kindersley	0.1	1.4	55.5	51.475	-109.285	547
15	Rosetown	0.2	1.3	56.9	51.504	-108.000	611

< : Below Detection Limit  
 F : Failure Sample  
 - : Sample Not Collected  
 NA : Missing sample or no data