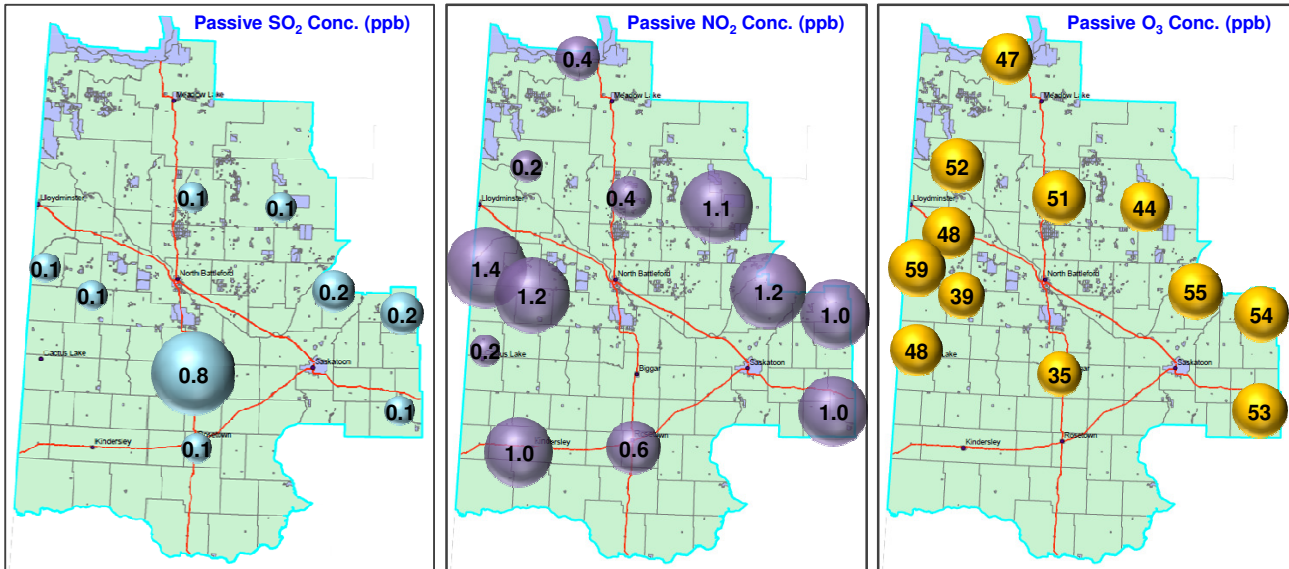


# Western Yellowhead Air Management Zone - May 2013 Passive Report



Station No.	Station Name	30-Days Average Concentration			Station Coordinates		
		SO <sub>2</sub> ppb	NO <sub>2</sub> ppb	O <sub>3</sub> ppb	Latitude degree	Longitude degree	Elevation m
1	Young	0.1	1.0	53.3	51.780	-105.767	522
2	Cudworth	0.2	1.0	54.2	52.498	-105.747	583
3	Laird	0.2	1.2	55.2	52.668	-106.496	522
4	Shell Lake	0.1	1.1	44.0	53.294	-107.074	564
5	Cater	0.1	0.4	50.5	53.366	-108.046	719
6	St. Walburg	< 0.1	0.2	52.2	53.598	-109.200	638
7	Maidstone	< 0.1	< 0.1	47.5	53.099	-109.297	728
8	Neilburg	0.1	1.4	59.1	52.842	-109.657	671
9	Denzil	< 0.1	0.2	47.9	52.231	-109.663	683
10	Wilbert	0.1	1.2	39.3	52.639	-109.145	675
11	Biggar	0.8	< 0.1	34.7	52.056	-108.035	728
13	Dorintosh	< 0.1	0.4	46.6	54.398	-108.628	486
14	Kindersley	< 0.1	1.0	F	51.475	-109.285	547
15	Rosetown	0.1	0.6	F	51.504	-108.000	611

< : Below Detection Limit

F : Failure Sample

- : Sample Not Collected

NA : Missing sample or no data