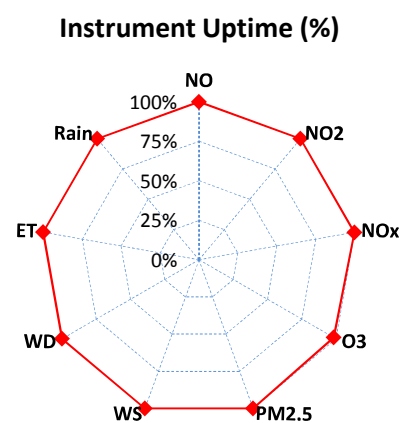
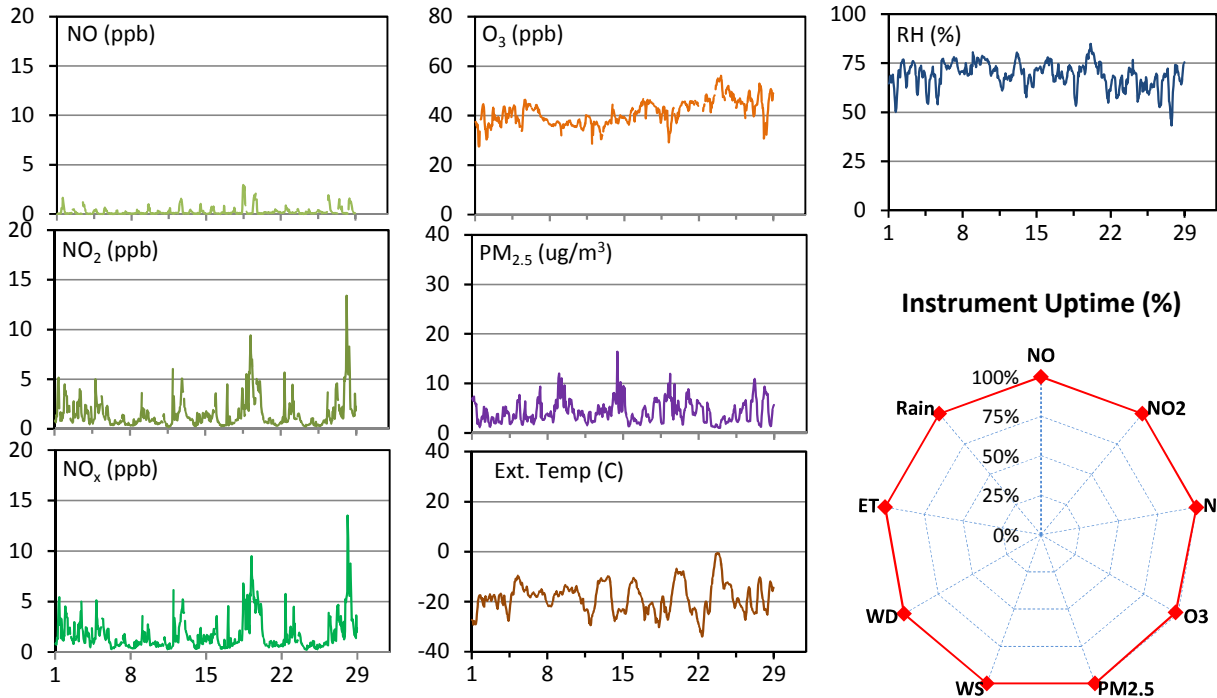
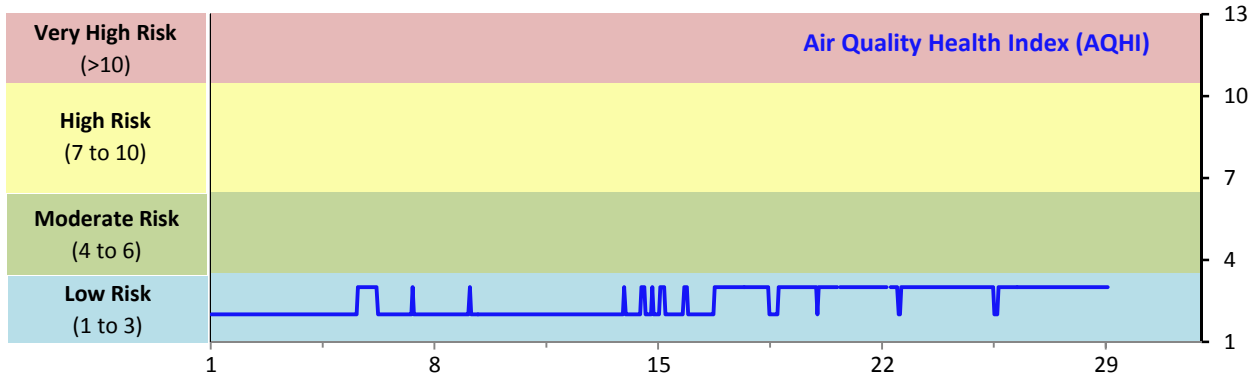


SESAA Esterhazy Station - February 2015 Summary Report

Pollutants		Month Records		24-Hour Records				1-Hour Records			
Name	Conc. Unit	Avg. Conc.	Uptime	Maximum		SAAQS Standard	Exceed Days	Maximum		SAAQS Standard	Exceed Hours
				Conc.	Time			Conc.	Time		
NO	ppb	0.2	99.8%	0.7	Feb-18	-	-	3.0	Feb-18 11:00	-	-
NO ₂	ppb	1.5	99.8%	4.9	Feb-19	-	-	13.4	Feb-28 02:00	212	0
NO _x	ppb	1.7	99.8%	5.5	Feb-19	-	-	13.5	Feb-28 02:00	-	-
O ₃	ppb	41	98.4%	50	Feb-24	-	-	56	Feb-24 01:00	82	0
PM _{2.5}	ug/m3	4	100.0%	7	Feb-9	30	0	16	Feb-14 11:00	-	-

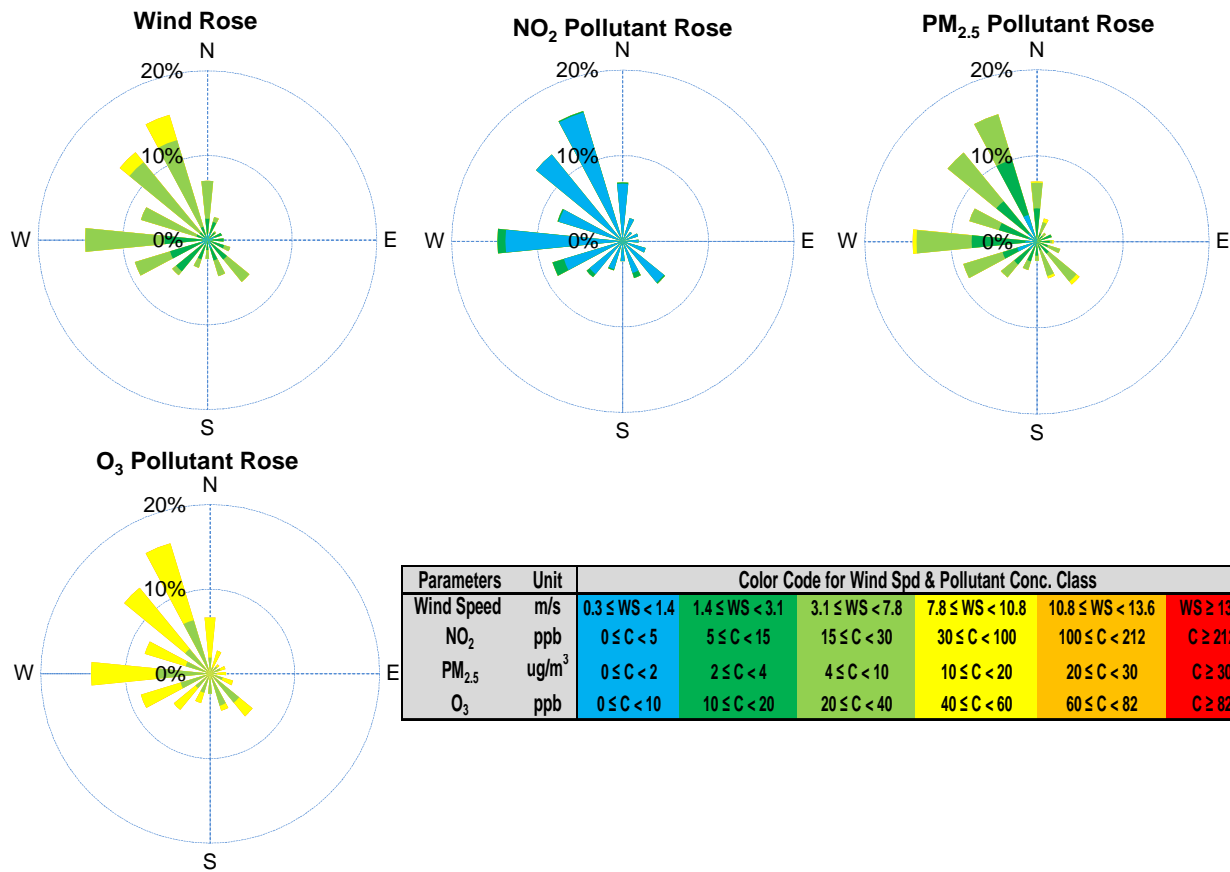
SAAQS: Saskatchewan Ambient Air Quality Standards



Monthly Update

- *All data has been slope, intercept, and baseline corrected. Data may change after validation process.
- *All compliance parameters were within the Saskatchewan Ambient Air Quality Standards.
- *All compliance parameters were above 90% operational.
- *10 hours of O3 data is flagged as "analyzer failure" on Feb 20-22, due to the O3 generator malfunctioning.
- *1 hour of NO/NO2/NOx data is flagged as "power failure" on Feb 22; all parameters were affected by the power disruption, however NO/NO2/NOx was slower to recover.

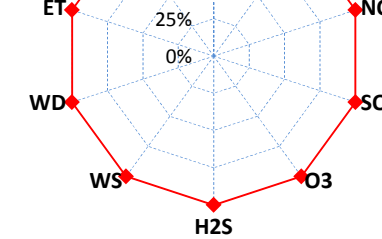
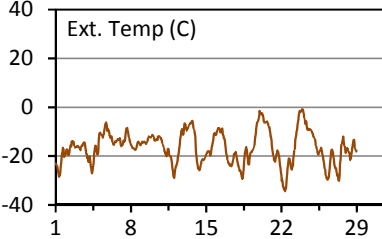
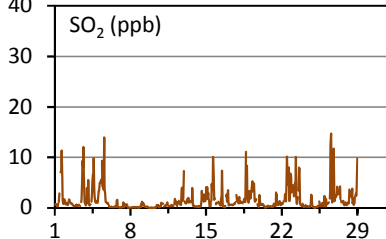
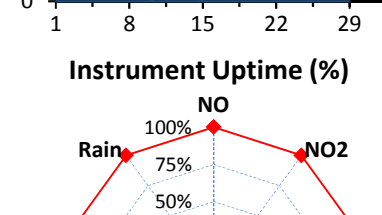
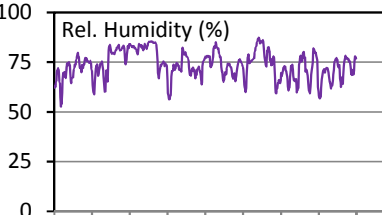
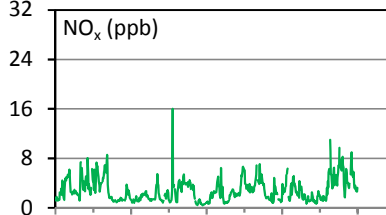
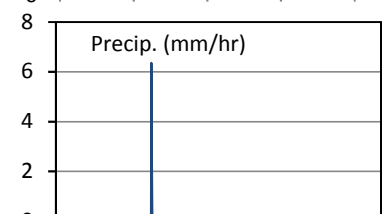
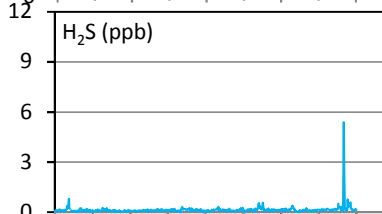
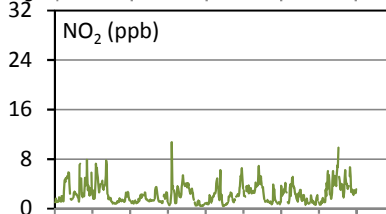
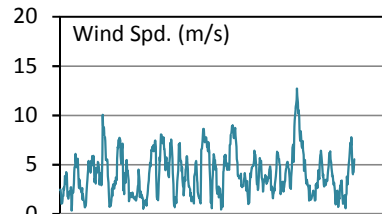
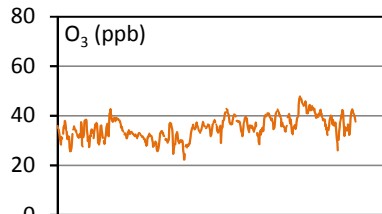
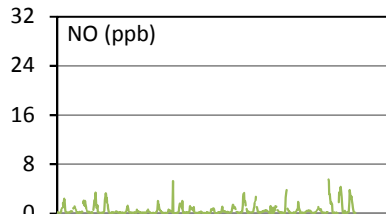
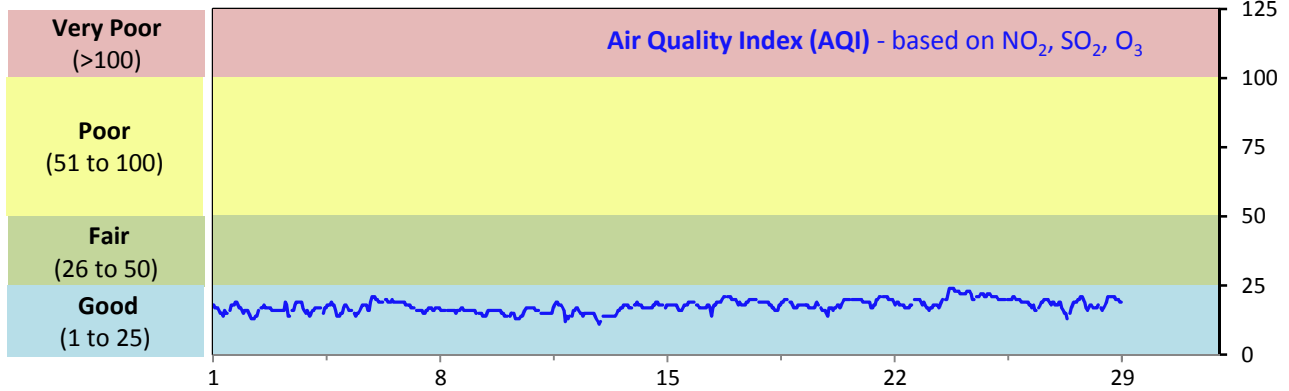
SESAA Esterhazy Station - February 2015 Summary Report



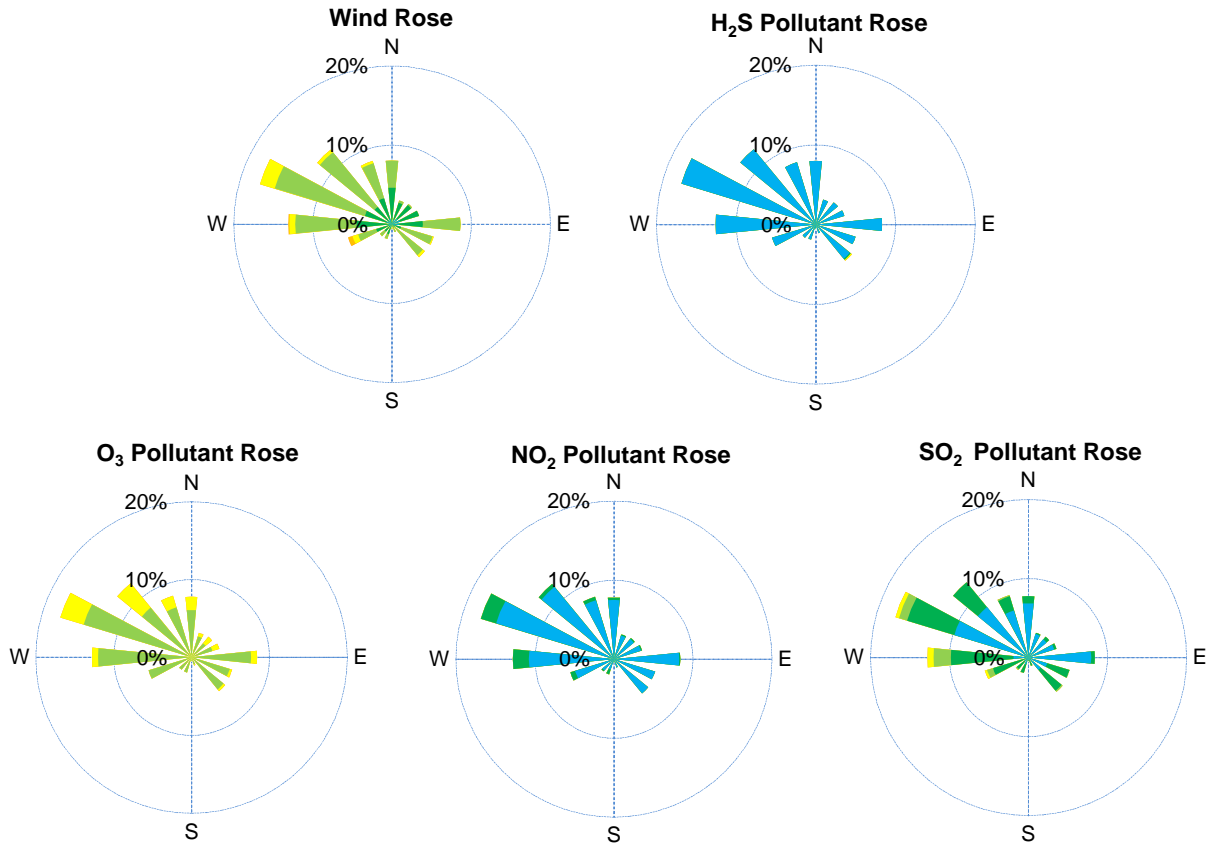
SESAA Glen Ewen Station - February 2015 Summary Report

Pollutants		Month Records		24-Hour Records				1-Hour Records			
Name	Conc. Unit	Avg. Conc.	Uptime	Maximum		SAAQS Standard	Exceed Days	Maximum		SAAQS Standard	Exceed Hours
				Conc.	Time			Conc.	Time		
NO	ppb	0.5	100.0%	1.3	Feb-27	-	-	5.5	Feb-26 10:00	-	-
NO ₂	ppb	2.4	100.0%	4.5	Feb-27	-	-	10.8	Feb-11 20:00	212	0
NO _x	ppb	2.9	100.0%	5.7	Feb-27	-	-	16.0	Feb-11 20:00	-	-
SO ₂	ppb	1.6	100.0%	3.7	Feb-5	57	0	14.7	Feb-26 13:00	172	0
O ₃	ppb	35	100.0%	43	Feb-24	-	-	48	Feb-23 18:00	82	0
H ₂ S	ppb	0.1	100.0%	0.6	Feb-27	3.6	0	5	Feb-27 19:00	10.8	0

SAAQS: Saskatchewan Ambient Air Quality Standards



SESAA Glen Ewen Station - February 2015 Summary Report



Parameters	Unit	Color Code for Wind Spd & Pollutant Conc. Class						
Wind Speed	m/s	0.3 ≤ WS < 1.4	1.4 ≤ WS < 3.1	3.1 ≤ WS < 7.8	7.8 ≤ WS < 10.8	10.8 ≤ WS < 13.6	WS ≥ 13.6	
SO ₂	ppb	0 ≤ C < 1	1 ≤ C < 5	5 ≤ C < 10	10 ≤ C < 57	57 ≤ C < 172	C ≥ 172	
NO ₂	ppb	0 ≤ C < 5	5 ≤ C < 15	15 ≤ C < 30	30 ≤ C < 100	100 ≤ C < 212	C ≥ 212	
O ₃	ppb	0 ≤ C < 10	10 ≤ C < 20	20 ≤ C < 40	40 ≤ C < 60	60 ≤ C < 82	C ≥ 82	
H ₂ S	ppb	0 ≤ C < 1	1 ≤ C < 3.6	3.6 ≤ C < 5	5 ≤ C < 8	8 ≤ C < 10.8	C ≥ 10.8	

Monthly Update

*All data has been slope, intercept, and baseline corrected. Data may change after validation process.

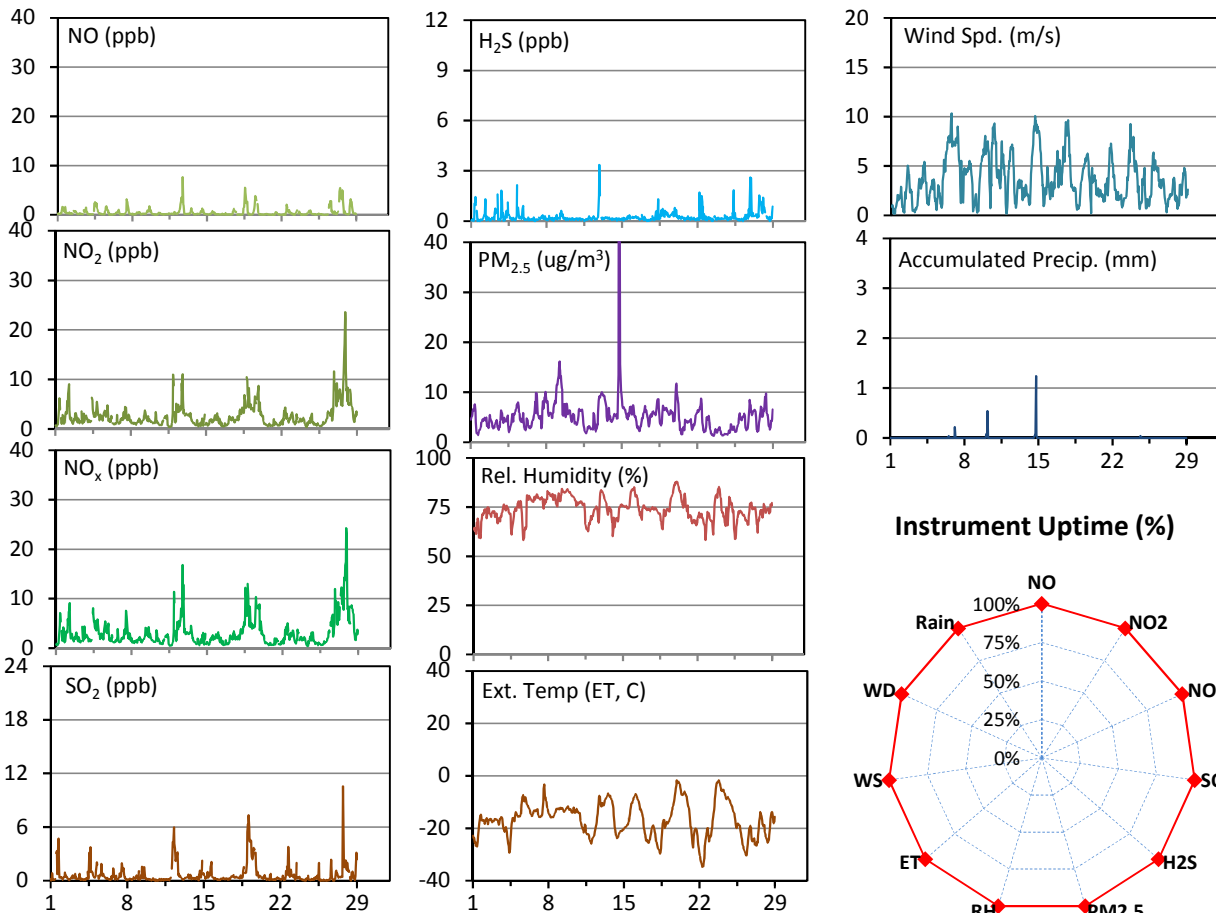
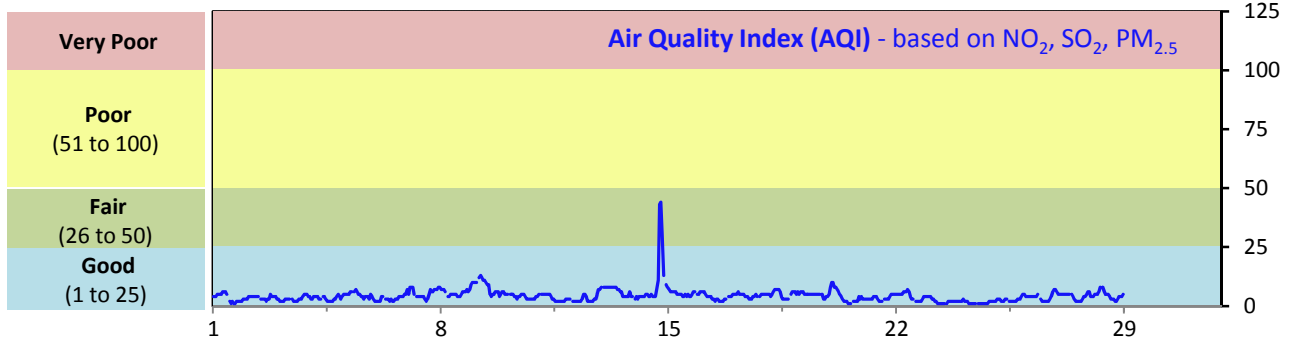
*All compliance parameters were within the Saskatchewan Ambient Air Quality Standards.

*All compliance parameters are above 90% operational, there are no operational issues to report.

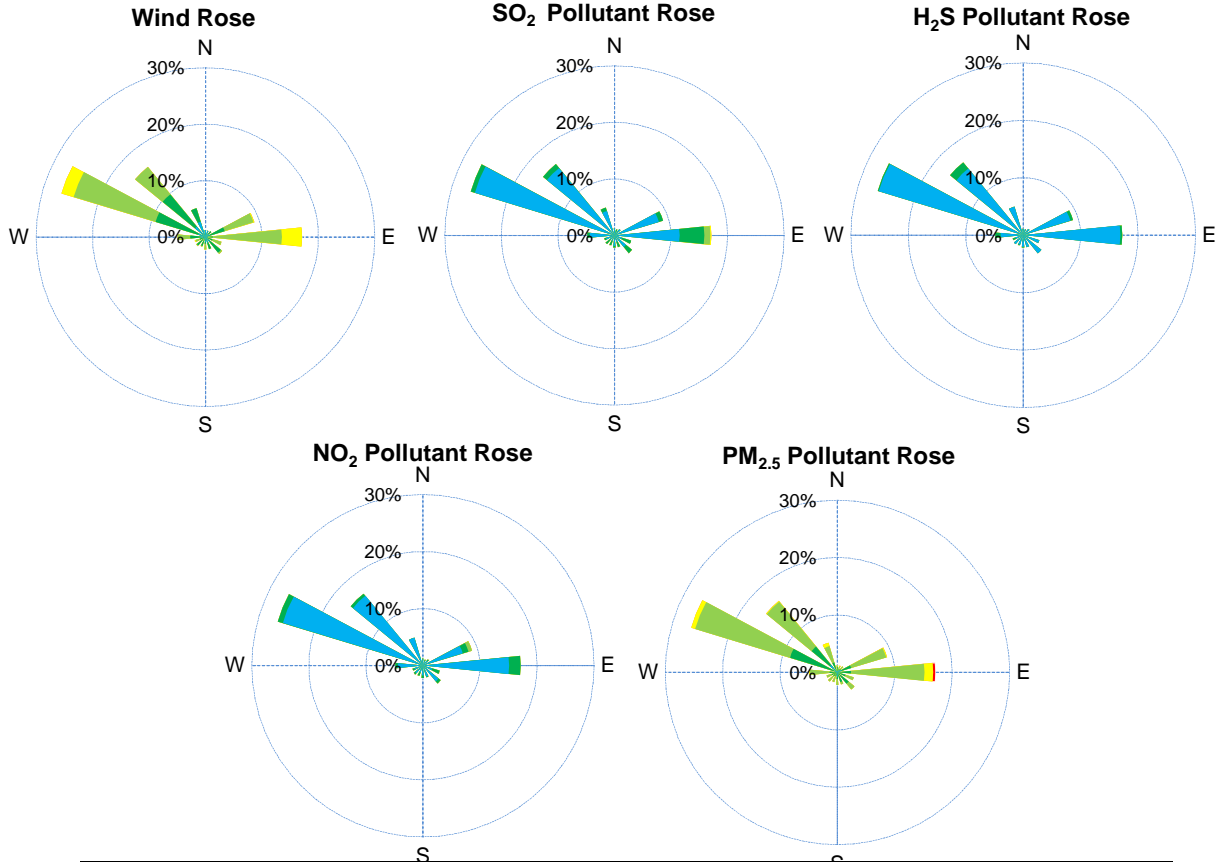
SESAA Stoughton Station - February 2015 Summary Report

Pollutants		Month Records		24-Hour Records				1-Hour Records			
Name	Conc. Unit	Avg. Conc.	Uptime	Maximum		SAAQS Standard	Exceed Days	Maximum		SAAQS Standard	Exceed Hours
				Conc.	Time			Conc.	Time		
NO	ppb	0.5	100.0%	2.1	Feb-27	-	-	7.6	Feb-12 17:00	-	-
NO ₂	ppb	2.6	100.0%	9.4	Feb-27	-	-	23.6	Feb-27 21:00	212	0
NO _x	ppb	3.1	100.0%	11.4	Feb-27	-	-	24.3	Feb-27 21:00	-	-
SO ₂	ppb	0.7	100.0%	3.3	Feb-19	57	0	10.6	Feb-27 17:00	172	0
H ₂ S	ppb	0.3	100.0%	0.6	Feb-27	3.6	0	3.4	Feb-12 21:00	10.8	0
PM _{2.5}	ug/m3	5	100.0%	13	Feb-14	30	0	67	Feb-14 18:00	-	-

SAAQS: Saskatchewan Ambient Air Quality Standards



SESAA Stoughton Station - February 2015 Summary Report



Parameters	Unit	Color Code for Wind Spd & Pollutant Conc. Class					
		0.3 ≤ WS < 1.4	1.4 ≤ WS < 3.1	3.1 ≤ WS < 7.8	7.8 ≤ WS < 10.8	10.8 ≤ WS < 13.6	WS ≥ 13.6
SO ₂	ppb	0 ≤ C < 1	1 ≤ C < 5	5 ≤ C < 10	10 ≤ C < 57	57 ≤ C < 172	C ≥ 172
NO ₂	ppb	0 ≤ C < 5	5 ≤ C < 15	15 ≤ C < 30	30 ≤ C < 100	100 ≤ C < 212	C ≥ 212
H ₂ S	ppb	0 ≤ C < 1	1 ≤ C < 3.6	3.6 ≤ C < 5	5 ≤ C < 8	8 ≤ C < 10.8	C ≥ 10.8
PM _{2.5}	ug/m ³	0 ≤ C < 2	2 ≤ C < 4	4 ≤ C < 10	10 ≤ C < 20	20 ≤ C < 30	C ≥ 30

Monthly Update

*All data has been slope, intercept, and baseline corrected. Data may change after validation process.

*All compliance parameters were within the Saskatchewan Ambient Air Quality Standards.

*All compliance parameters are above 90% operational, there are no operational issues to report.

