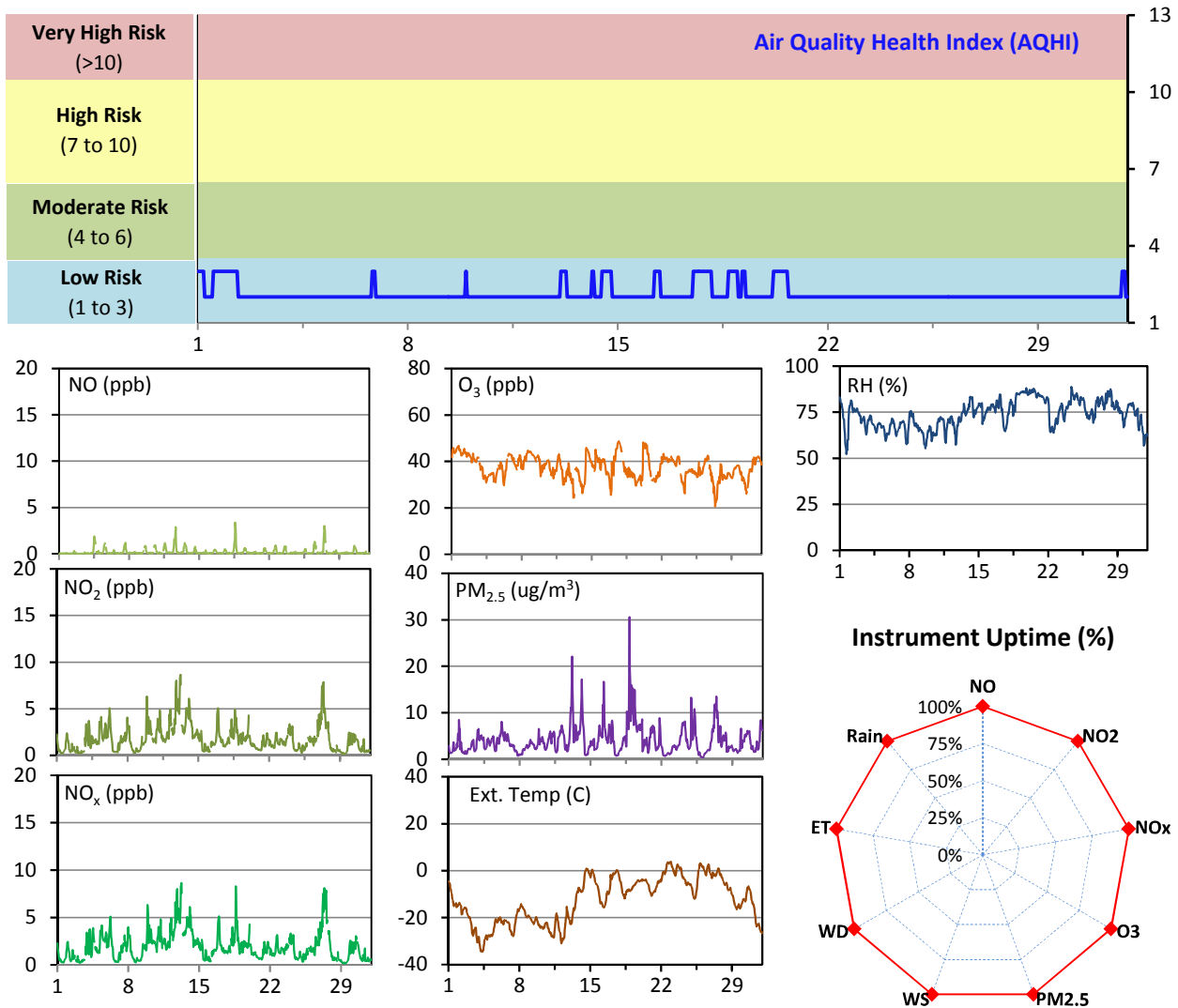


SESAA Esterhazy Station - January 2015 Summary Report

Pollutants		Month Records		24-Hour Records				1-Hour Records			
Name	Conc. Unit	Avg. Conc.	Uptime	Maximum		SAAQS Standard	Exceed Days	Maximum		SAAQS Standard	Exceed Hours
				Conc.	Time			Conc.	Time		
NO	ppb	0.2	100.0%	0.6	Jan-27	-	-	3.4	Jan-18 14:00	-	-
NO ₂	ppb	1.8	100.0%	4.4	Jan-13	-	-	8.7	Jan-13 05:00	212	0
NO _x	ppb	1.9	100.0%	4.9	Jan-27	-	-	8.6	Jan-13 05:00	-	-
O ₃	ppb	37	99.9%	45	Jan-1	-	-	49	Jan-17 17:00	82	0
PM _{2.5}	ug/m3	4	100.0%	9	Jan-19	30	0	31	Jan-18 20:00	-	-

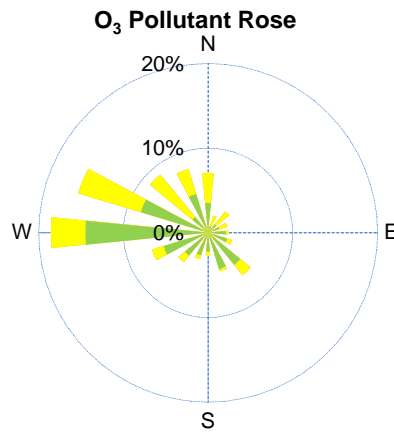
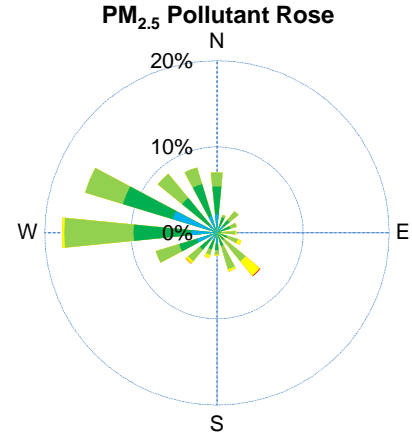
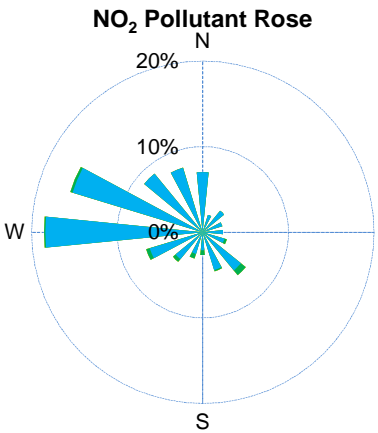
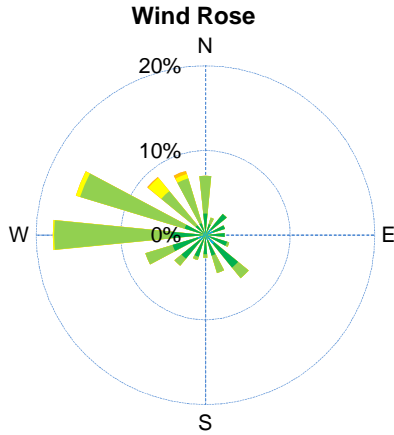
SAAQS: Saskatchewan Ambient Air Quality Standards



Monthly Update

- *All data has been slope, intercept, and baseline corrected. Data may change after validation process.
- *All compliance parameters were within the Saskatchewan Ambient Air Quality Standards.
- *All compliance parameters were above 90% operational.
- *One hour of O₃ data is flagged as "analyzer failure" on Jan 18, due to abnormal data readings.

SESAA Esterhazy Station - January 2015 Summary Report

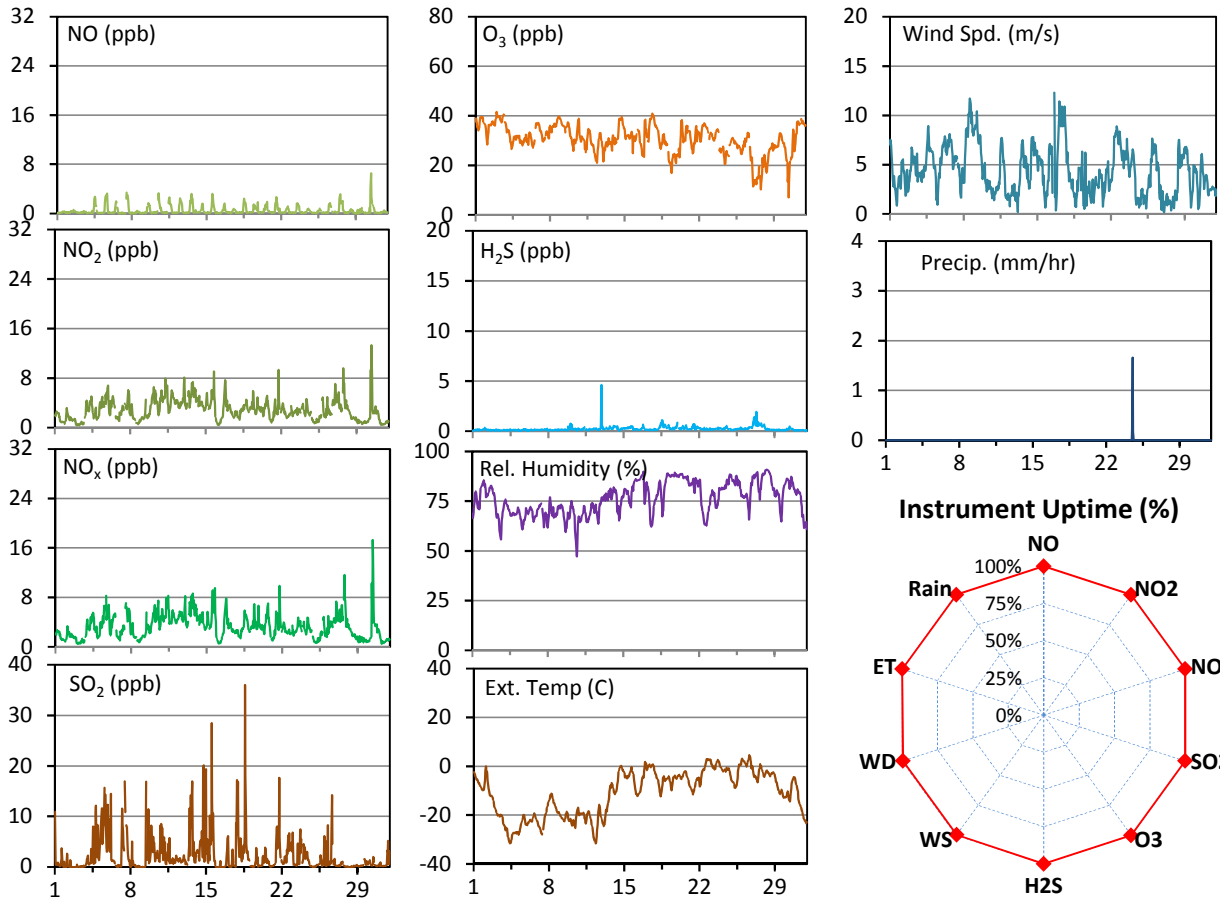
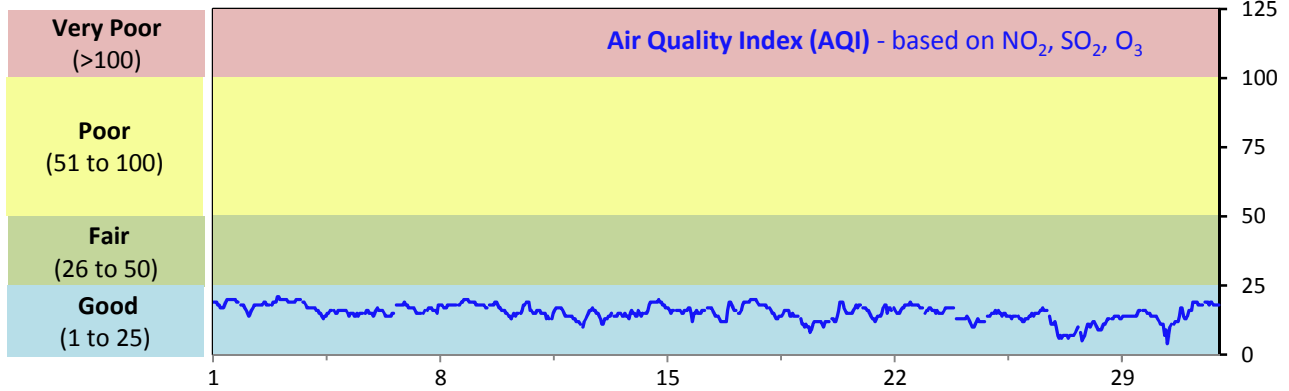


Parameters	Unit	Color Code for Wind Spd & Pollutant Conc. Class					
		0.3 ≤ WS < 1.4	1.4 ≤ WS < 3.1	3.1 ≤ WS < 7.8	7.8 ≤ WS < 10.8	10.8 ≤ WS < 13.6	WS ≥ 13.6
NO ₂	ppb	0 ≤ C < 5	5 ≤ C < 15	15 ≤ C < 30	30 ≤ C < 100	100 ≤ C < 212	C ≥ 212
PM _{2.5}	ug/m ³	0 ≤ C < 2	2 ≤ C < 4	4 ≤ C < 10	10 ≤ C < 20	20 ≤ C < 30	C ≥ 30
O ₃	ppb	0 ≤ C < 10	10 ≤ C < 20	20 ≤ C < 40	40 ≤ C < 60	60 ≤ C < 82	C ≥ 82

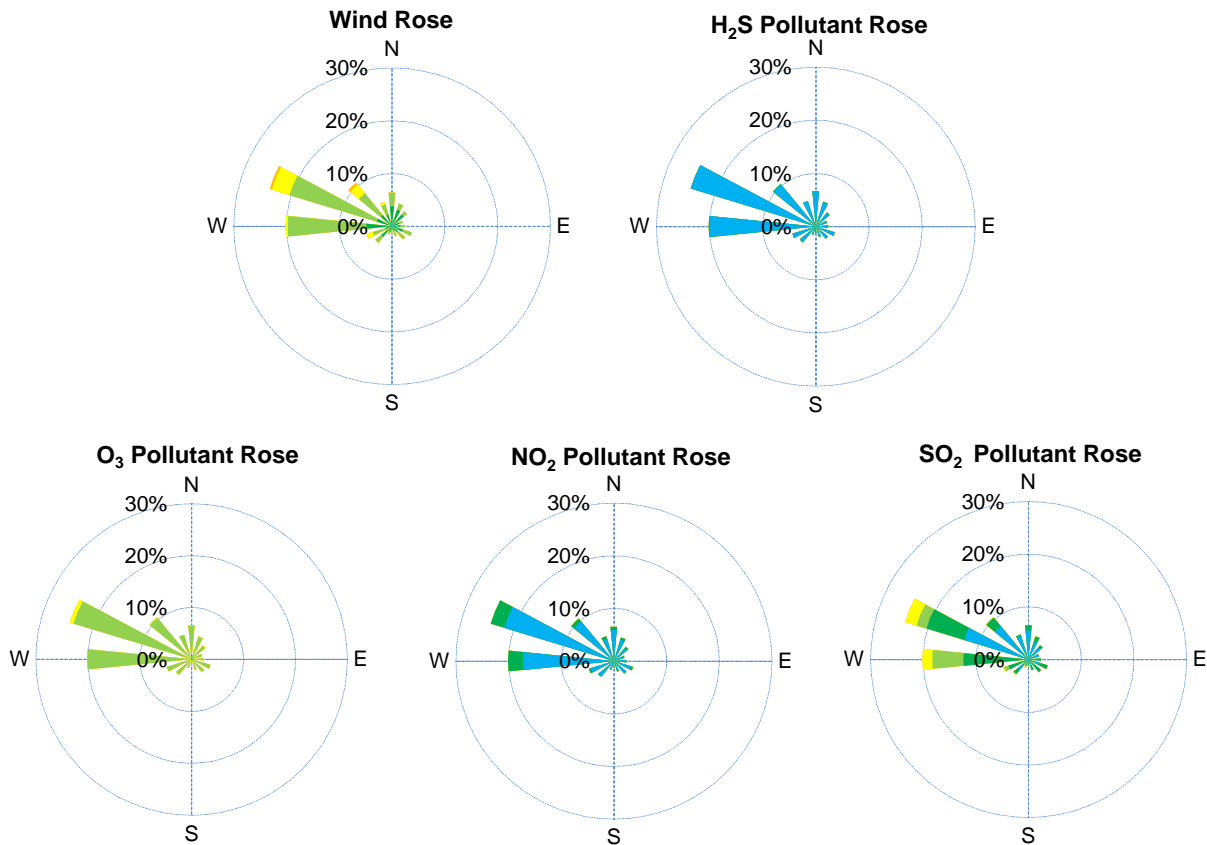
SESAA Glen Ewen Station - January 2015 Summary Report

Pollutants		Month Records		24-Hour Records				1-Hour Records			
				Maximum		SAAQS Standard	Exceed Days	Maximum		SAAQS Standard	Exceed Hours
				Conc.	Time			Conc.	Time		
Name	Conc. Unit	Avg. Conc.	Uptime	Conc.	Time	Standard	Days	Conc.	Time	Standard	Hours
NO	ppb	0.5	99.9%	0.9	Jan-30	-	-	6.6	Jan-30 10:00	-	-
NO ₂	ppb	2.9	99.9%	5.2	Jan-13	-	-	13.3	Jan-30 09:00	212	0
NO _x	ppb	3.3	99.9%	6.0	Jan-13	-	-	17.3	Jan-30 09:00	-	-
SO ₂	ppb	2.3	99.9%	7.0	Jan-5	57	0	36.0	Jan-18 14:00	172	0
O ₃	ppb	31	99.9%	38	Jan-3	-	-	42	Jan-02 23:00	82	0
H ₂ S	ppb	0.2	99.9%	0.8	Jan-27	3.6	0	5	Jan-12 22:00	10.8	0

SAAQS: Saskatchewan Ambient Air Quality Standards



SESAA Glen Ewen Station - January 2015 Summary Report

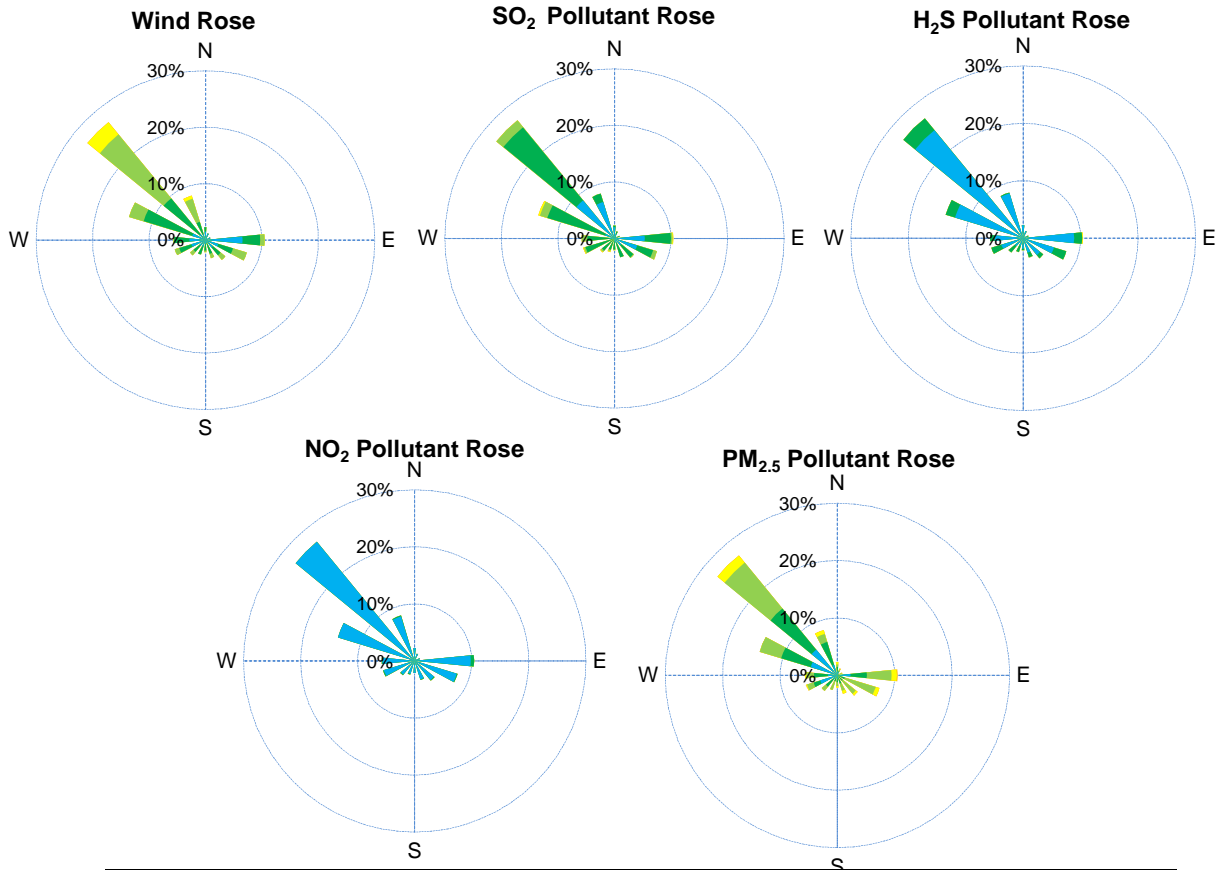


Parameters	Unit	Color Code for Wind Spd & Pollutant Conc. Class						
Wind Speed	m/s	0.3 ≤ WS < 1.4	1.4 ≤ WS < 3.1	3.1 ≤ WS < 7.8	7.8 ≤ WS < 10.8	10.8 ≤ WS < 13.6	WS ≥ 13.6	
SO ₂	ppb	0 ≤ C < 1	1 ≤ C < 5	5 ≤ C < 10	10 ≤ C < 57	57 ≤ C < 172	C ≥ 172	
NO ₂	ppb	0 ≤ C < 5	5 ≤ C < 15	15 ≤ C < 30	30 ≤ C < 100	100 ≤ C < 212	C ≥ 212	
O ₃	ppb	0 ≤ C < 10	10 ≤ C < 20	20 ≤ C < 40	40 ≤ C < 60	60 ≤ C < 82	C ≥ 82	
H ₂ S	ppb	0 ≤ C < 1	1 ≤ C < 3.6	3.6 ≤ C < 5	5 ≤ C < 8	8 ≤ C < 10.8	C ≥ 10.8	

Monthly Update

- *All data has been slope, intercept, and baseline corrected. Data may change after validation process.
- *All compliance parameters were within the Saskatchewan Ambient Air Quality Standards.
- *All compliance parameters are above 90% operational.
- *The wind instrument was malfunctioning on Jan 16, 3 hours of data is flagged as "analyzer failure". This is attributed to adverse weather conditions that caused the wind instrument to freeze up.
- *One hour of data for all parameters is flagged as "power failure" on Jan 7 due to a power disruption.

SESAA Oxbow Station - January 2015 Summary Report



Parameters	Unit	Color Code for Wind Spd & Pollutant Conc. Class						
Wind Speed	m/s	$0.3 \leq WS < 1.4$	$1.4 \leq WS < 3.1$	$3.1 \leq WS < 7.8$	$7.8 \leq WS < 10.8$	$10.8 \leq WS < 13.6$	$WS \geq 13.6$	
SO ₂	ppb	$0 \leq C < 1$	$1 \leq C < 5$	$5 \leq C < 10$	$10 \leq C < 57$	$57 \leq C < 172$	$C \geq 172$	
NO ₂	ppb	$0 \leq C < 5$	$5 \leq C < 15$	$15 \leq C < 30$	$30 \leq C < 100$	$100 \leq C < 212$	$C \geq 212$	
H ₂ S	ppb	$0 \leq C < 1$	$1 \leq C < 3.6$	$3.6 \leq C < 5$	$5 \leq C < 8$	$8 \leq C < 10.8$	$C \geq 10.8$	
PM _{2.5}	ug/m ³	$0 \leq C < 2$	$2 \leq C < 4$	$4 \leq C < 10$	$10 \leq C < 20$	$20 \leq C < 30$	$C \geq 30$	

Monthly Update

*Hourly data was downloaded directly from the airpointer due to communication issues. Data has not been slope/intercept or baseline corrected

*All compliance parameters were within the Saskatchewan Ambient Air Quality Standard.

*All compliance parameters are above 90% operational. One hour of data is missing on Jan 15, as it was not downloaded.