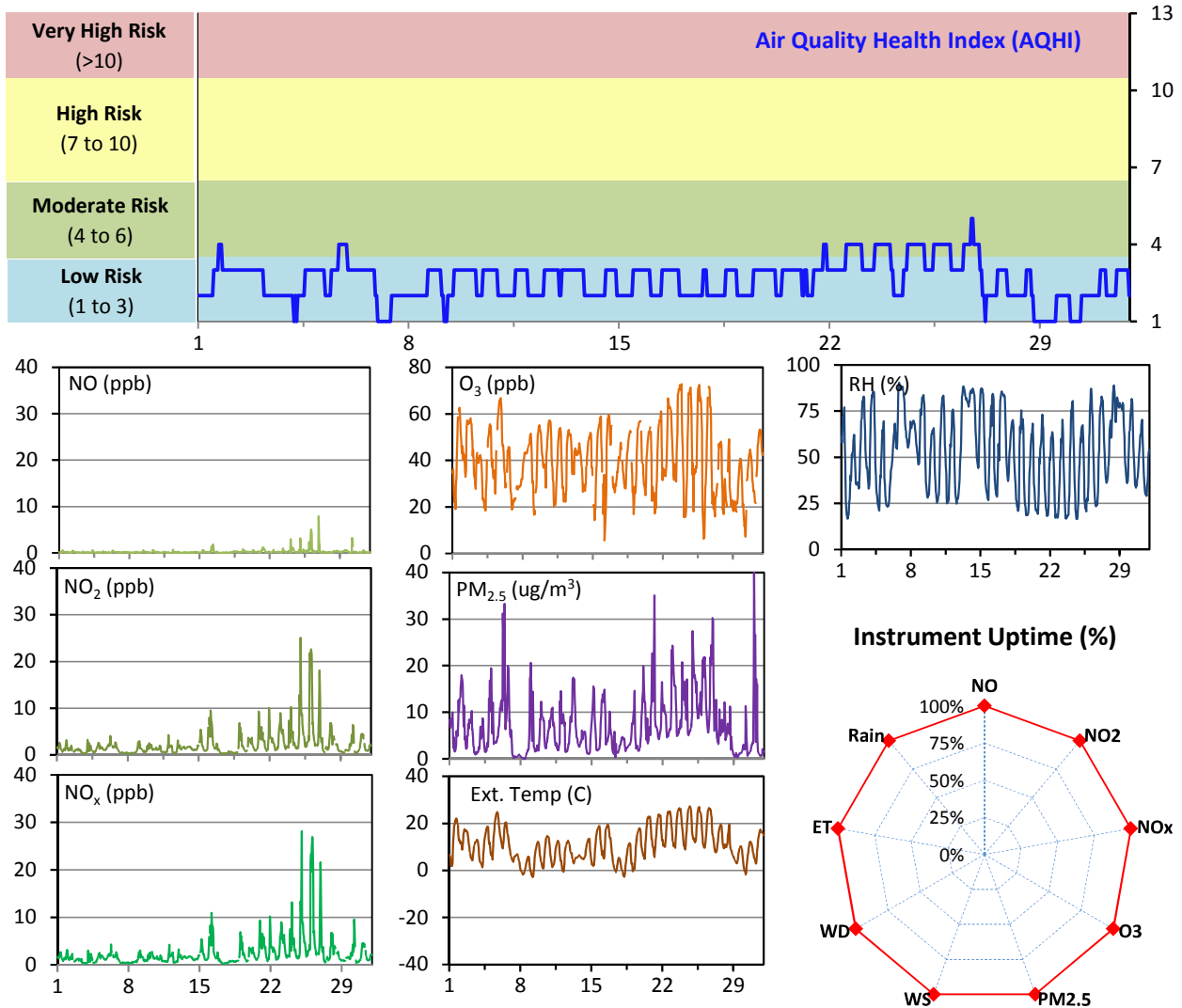


SESAA Esterhazy Station - May 2015 Summary Report

Pollutants		Month Records		24-Hour Records				1-Hour Records			
Name	Conc. Unit	Avg. Conc.	Uptime	Maximum		SAAQS Standard	Exceed Days	Maximum		SAAQS Standard	Exceed Hours
				Conc.	Time			Conc.	Time		
NO	ppb	0.3	100.0%	1.5	May-26	-	-	7.9	May-26 21:00	-	-
NO ₂	ppb	2.2	100.0%	9.0	May-26	-	-	25.1	May-25 01:00	212	0
NO _x	ppb	2.4	100.0%	10.4	May-26	-	-	28.1	May-25 01:00	-	-
O ₃	ppb	40	100.0%	52	May-23	-	-	73	May-23 20:00	82	0
PM _{2.5}	ug/m3	7	100.0%	16	May-26	30	0	41	May-31 00:00	-	-

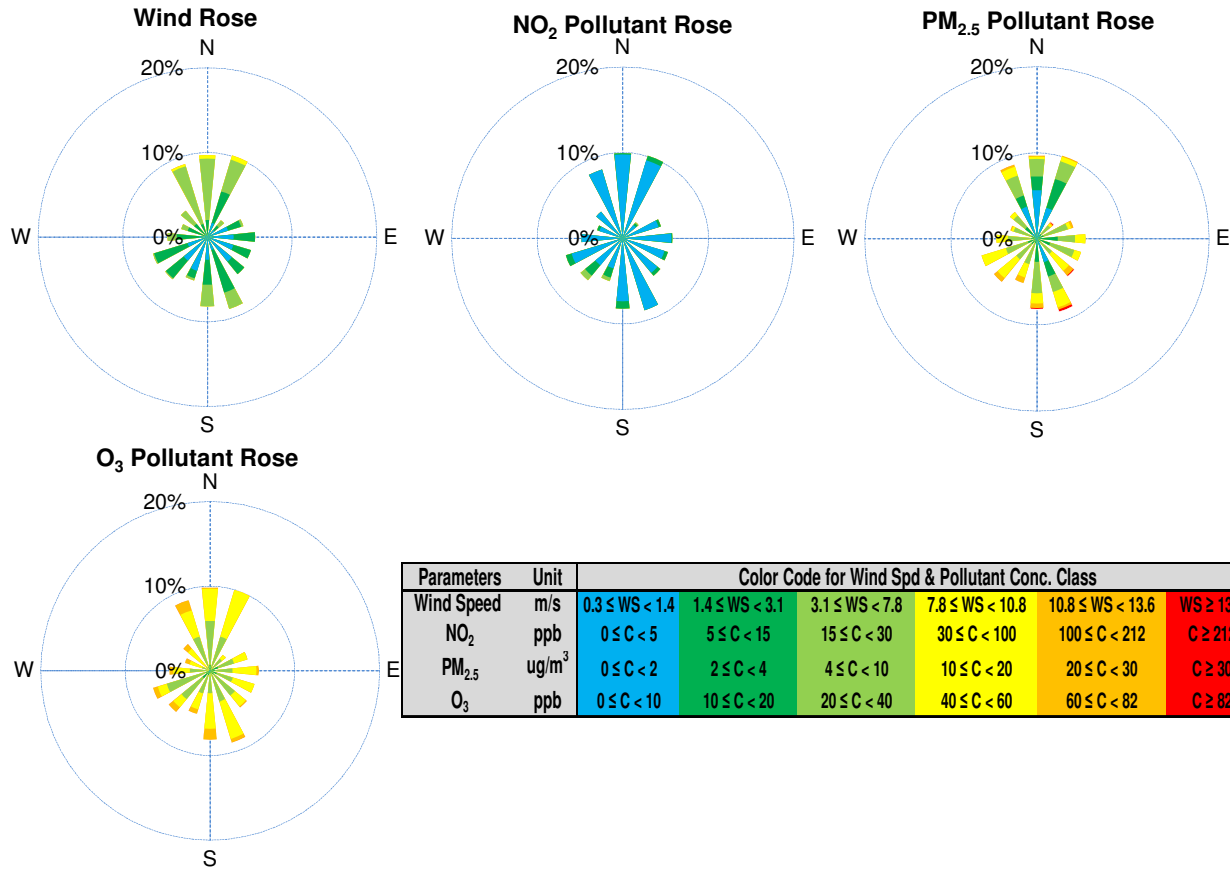
SAAQS: Saskatchewan Ambient Air Quality Standards



Monthly Update

- *All data has been slope, intercept, and baseline corrected. Data may change after validation process.
- *All compliance parameters were within the Saskatchewan Ambient Air Quality Standards.
- *All compliance parameters were above 90% operational, there are no operational issues to report.

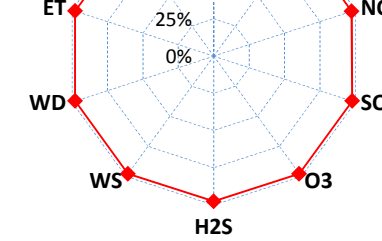
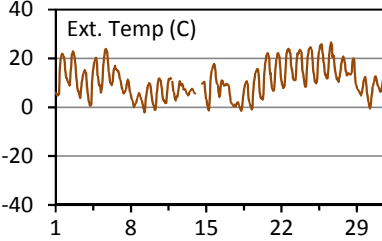
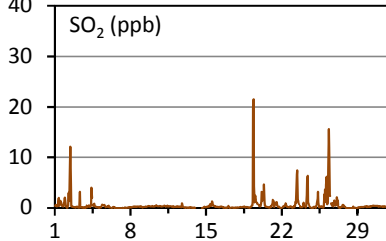
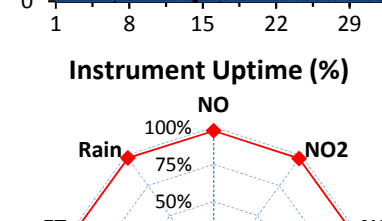
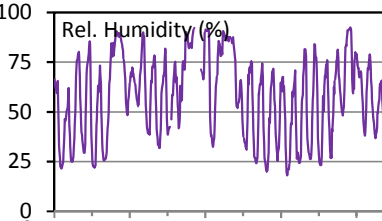
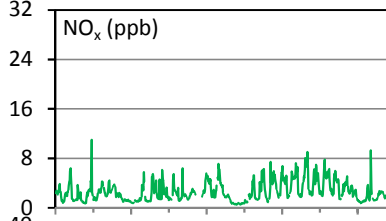
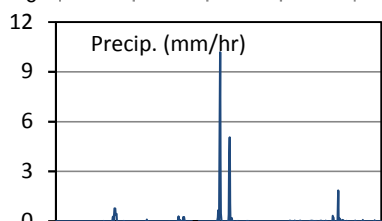
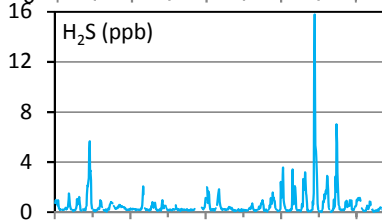
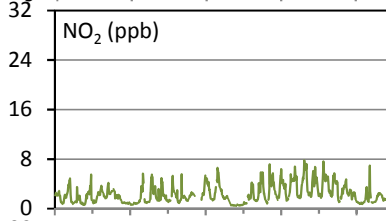
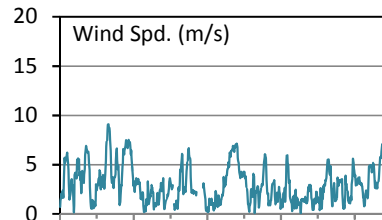
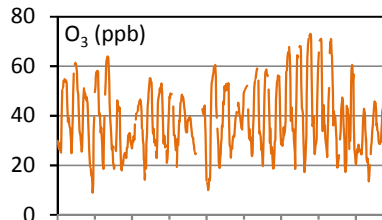
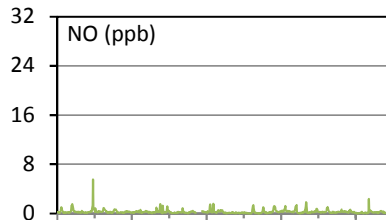
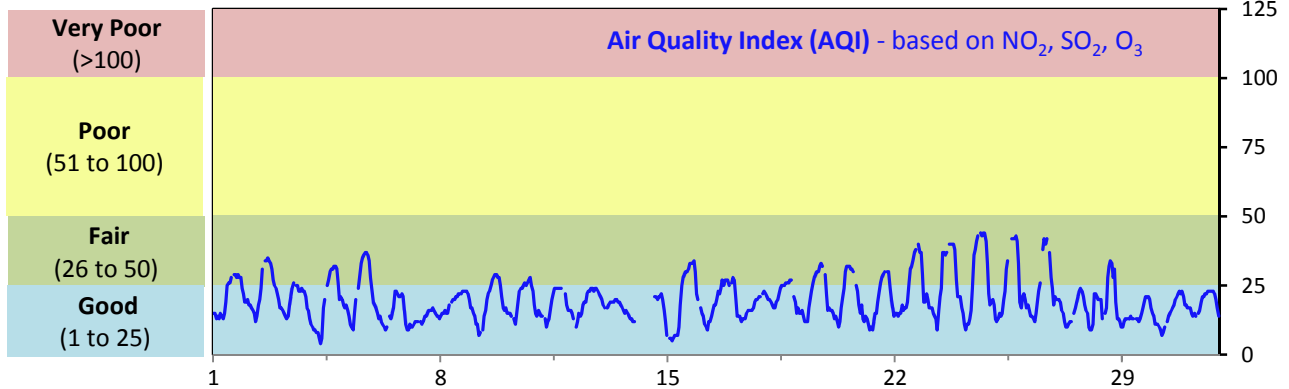
SESAA Esterhazy Station - May 2015 Summary Report



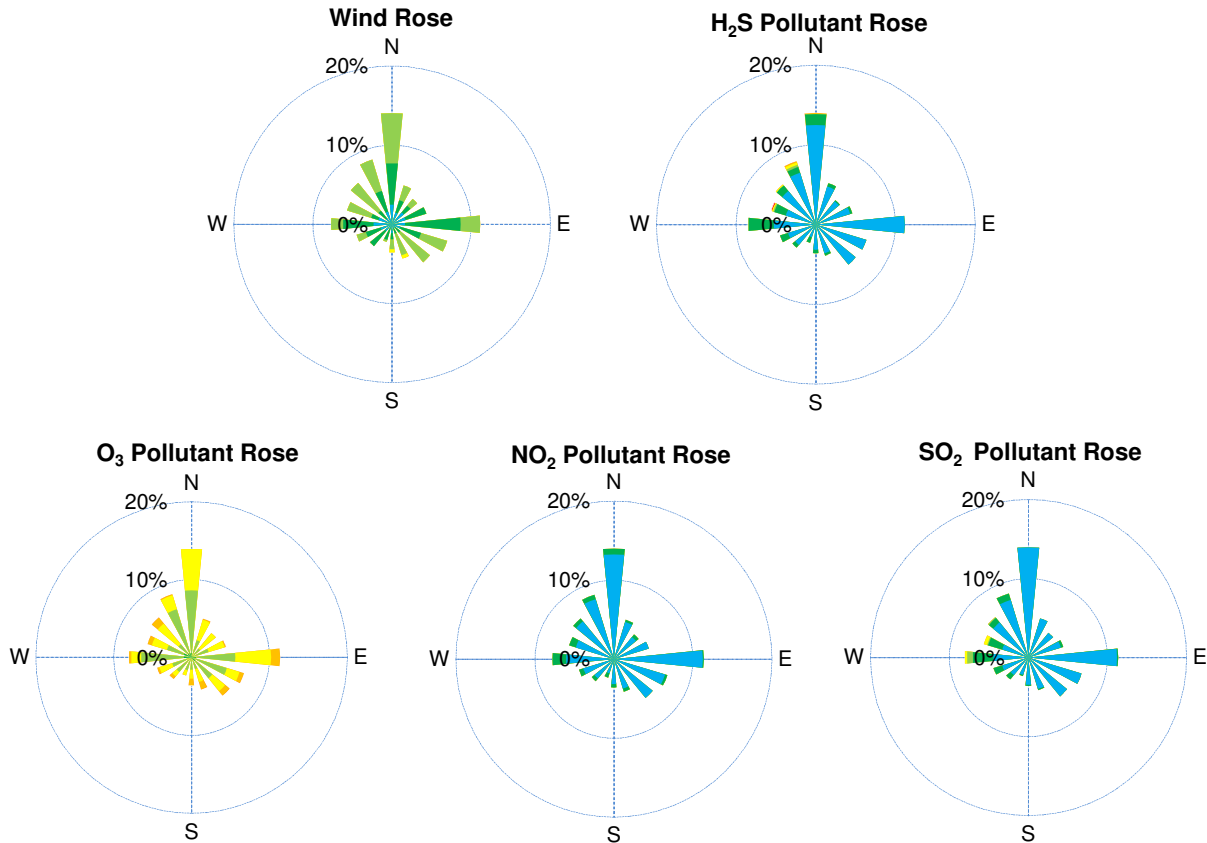
SESAA Glen Ewen Station - May 2015 Summary Report

Pollutants		Month Records		24-Hour Records				1-Hour Records			
Name	Conc. Unit	Avg. Conc.	Uptime	Maximum		SAAQS Standard	Exceed Days	Maximum		SAAQS Standard	Exceed Hours
				Conc.	Time			Conc.	Time		
NO	ppb	0.3	97.5%	0.6	May-4	-	-	5.5	May-04 08:00	-	-
NO ₂	ppb	2.4	97.5%	4.4	May-24	-	-	7.8	May-24 03:00	212	0
NO _x	ppb	2.6	97.5%	4.7	May-24	-	-	11.0	May-04 08:00	-	-
SO ₂	ppb	0.6	97.8%	3.0	May-26	57	0	21.5	May-19 09:00	172	0
O ₃	ppb	39	97.8%	48	May-23	-	-	73	May-24 17:00	82	0
H ₂ S	ppb	0.6	97.5%	2.8	May-25	3.6	0	15.8	May-25 02:00	10.8	1

SAAQS: Saskatchewan Ambient Air Quality Standards



SESAA Glen Ewen Station - May 2015 Summary Report



Parameters	Unit	Color Code for Wind Spd & Pollutant Conc. Class						
Wind Speed	m/s	0.3 ≤ WS < 1.4	1.4 ≤ WS < 3.1	3.1 ≤ WS < 7.8	7.8 ≤ WS < 10.8	10.8 ≤ WS < 13.6	WS ≥ 13.6	
SO ₂	ppb	0 ≤ C < 1	1 ≤ C < 5	5 ≤ C < 10	10 ≤ C < 57	57 ≤ C < 172	C ≥ 172	
NO ₂	ppb	0 ≤ C < 5	5 ≤ C < 15	15 ≤ C < 30	30 ≤ C < 100	100 ≤ C < 212	C ≥ 212	
O ₃	ppb	0 ≤ C < 10	10 ≤ C < 20	20 ≤ C < 40	40 ≤ C < 60	60 ≤ C < 82	C ≥ 82	
H ₂ S	ppb	0 ≤ C < 1	1 ≤ C < 3.6	3.6 ≤ C < 5	5 ≤ C < 8	8 ≤ C < 10.8	C ≥ 10.8	

Monthly Update

- *All data has been slope, intercept, and baseline corrected. Data may change after validation process.
- *All compliance parameters were within the Saskatchewan Ambient Air Quality Standards, with the exception of one 1-hour H₂S exceedance event. Please refer to the exceedance summary table below for details.
- *All compliance parameters are above 90% operational.
- *16-18 hours of data for all other parameters is flagged as "power failure" intermittently throughout the month due to power disruptions.

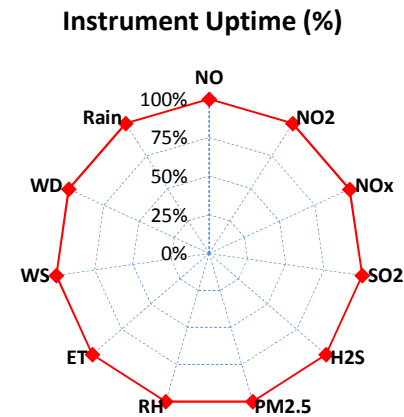
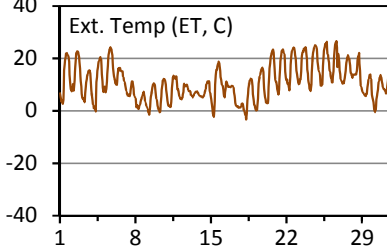
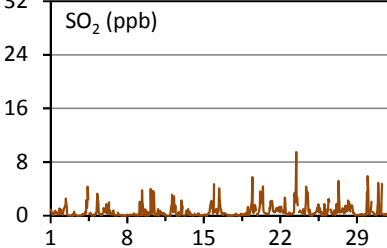
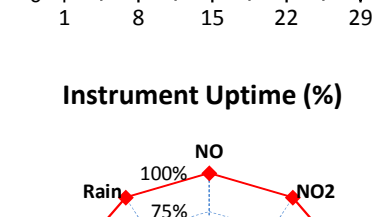
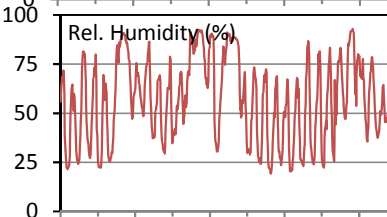
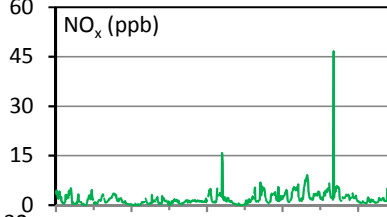
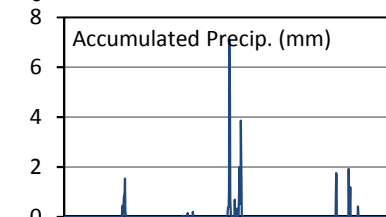
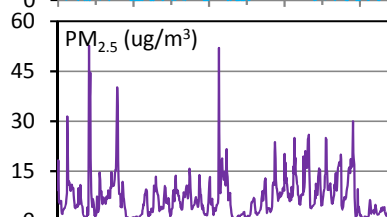
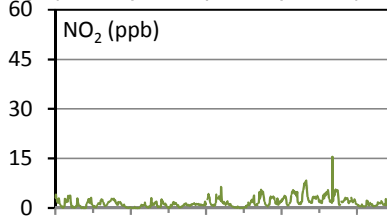
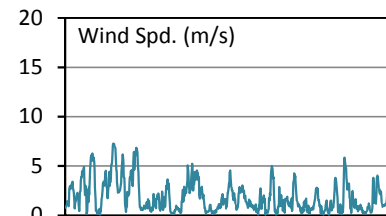
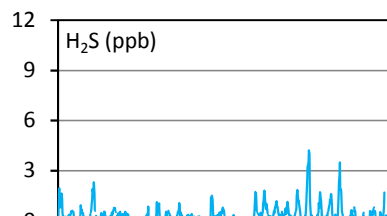
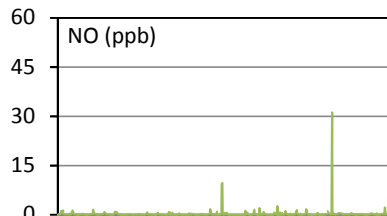
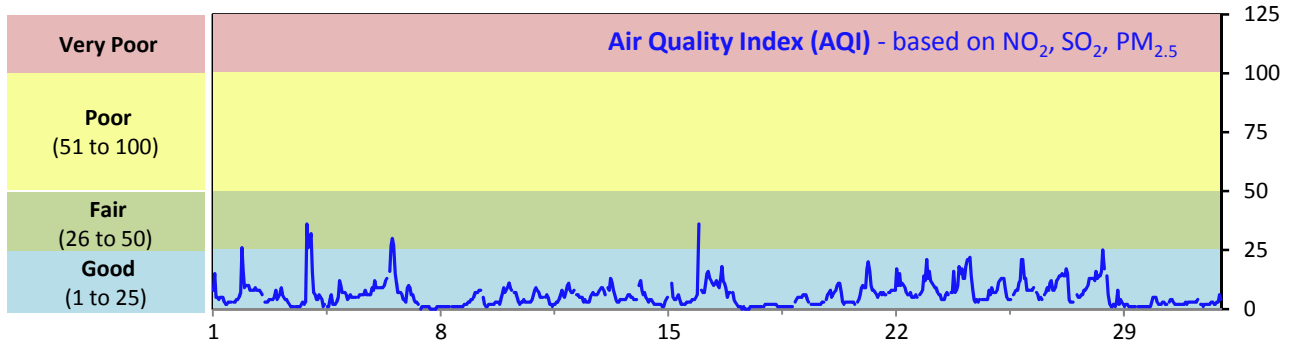
Exceedance Summary

1-hour Exceedance Information			Summary of Other Parameters During Exceedance							
Pollutant	Conc. ppb	Exceedance Time mmm-dd hh:mm	WS m/s	WD deg	AQI -	Rain mm	SO ₂ ppb	NO ₂ ppb	O ₃ ppb	H ₂ S ppb
H ₂ S	15.8	May-25 02:00	0.4	296	13	0.0	0.0	4.9	26	15.8

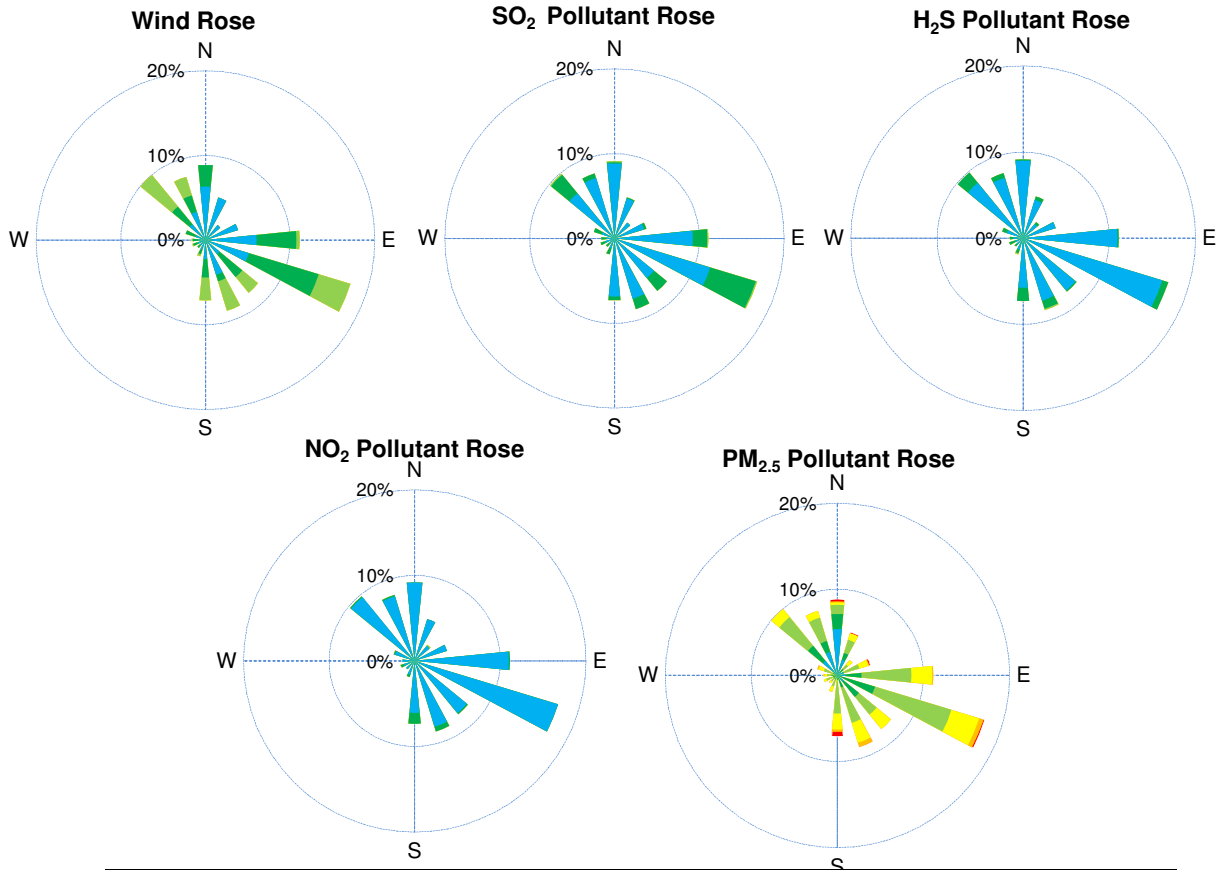
SESAA Oxbow Station - May 2015 Summary Report

Pollutants		Month Records		24-Hour Records				1-Hour Records			
Name	Conc. Unit	Avg. Conc.	Uptime	Maximum		SAAQS Standard	Exceed Days	Maximum		SAAQS Standard	Exceed Hours
				Conc.	Time			Conc.	Time		
NO	ppb	0.3	99.9%	1.7	May-26	-	-	31.2	May-26 17:00	-	-
NO ₂	ppb	1.7	99.9%	4.2	May-24	-	-	15.5	May-26 17:00	212	0
NO _x	ppb	2.0	99.9%	5.9	May-26	-	-	46.7	May-26 17:00	-	-
SO ₂	ppb	0.6	100.0%	1.6	May-23	57	0	9.5	May-23 10:00	172	0
H ₂ S	ppb	0.4	100.0%	1.2	May-24	3.6	0	4.2	May-24 06:00	10.8	0
PM _{2.5}	ug/m ³	7	100.0%	14	May-6	30	0	53	May-03 21:00	-	-

SAAQS: Saskatchewan Ambient Air Quality Standards



SESAA Oxbow Station - May 2015 Summary Report



Parameters	Unit	Color Code for Wind Spd & Pollutant Conc. Class						
Wind Speed	m/s	$0.3 \leq WS < 1.4$	$1.4 \leq WS < 3.1$	$3.1 \leq WS < 7.8$	$7.8 \leq WS < 10.8$	$10.8 \leq WS < 13.6$	$WS \geq 13.6$	
SO ₂	ppb	$0 \leq C < 1$	$1 \leq C < 5$	$5 \leq C < 10$	$10 \leq C < 57$	$57 \leq C < 172$	$C \geq 172$	
NO ₂	ppb	$0 \leq C < 5$	$5 \leq C < 15$	$15 \leq C < 30$	$30 \leq C < 100$	$100 \leq C < 212$	$C \geq 212$	
H ₂ S	ppb	$0 \leq C < 1$	$1 \leq C < 3.6$	$3.6 \leq C < 5$	$5 \leq C < 8$	$8 \leq C < 10.8$	$C \geq 10.8$	
PM _{2.5}	ug/m ³	$0 \leq C < 2$	$2 \leq C < 4$	$4 \leq C < 10$	$10 \leq C < 20$	$20 \leq C < 30$	$C \geq 30$	

Monthly Update

- *All data has been slope, intercept, and baseline corrected. Data may change after validation process.
- *All compliance parameters were within the Saskatchewan Ambient Air Quality Standard.
- *All compliance parameters are above 90% operational.
- *One hour of NO/NO₂/NO_x data is flagged as "power failure" on May 26 due to a power disruption. All analyzers were affected, however NO/NO₂/NO_x is slower to recover.