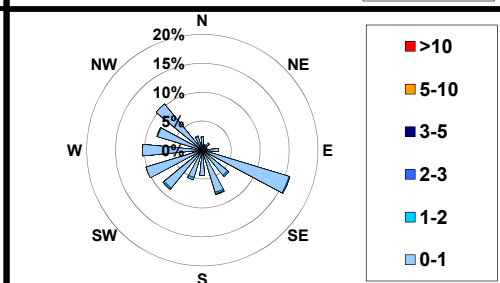
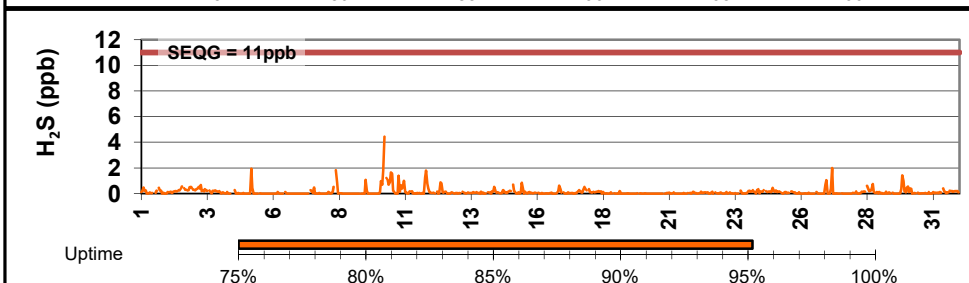
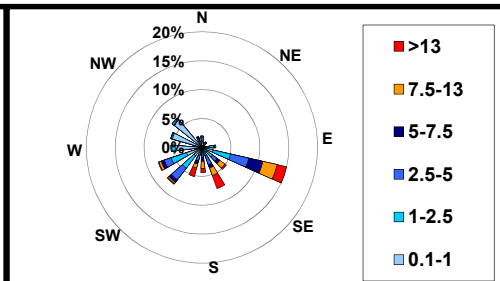
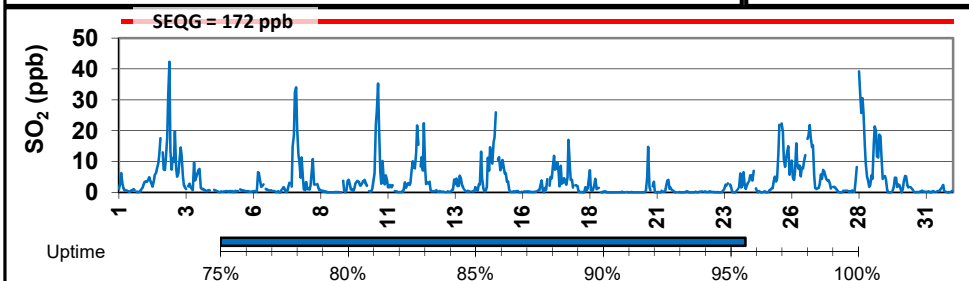
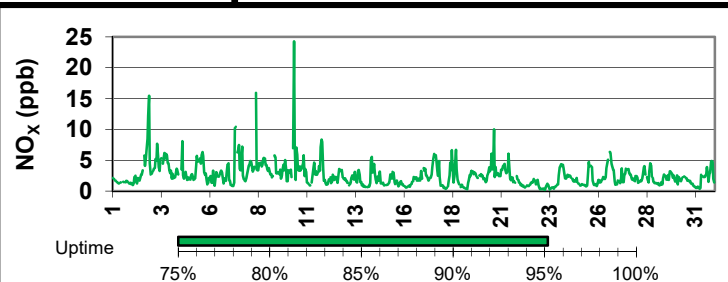
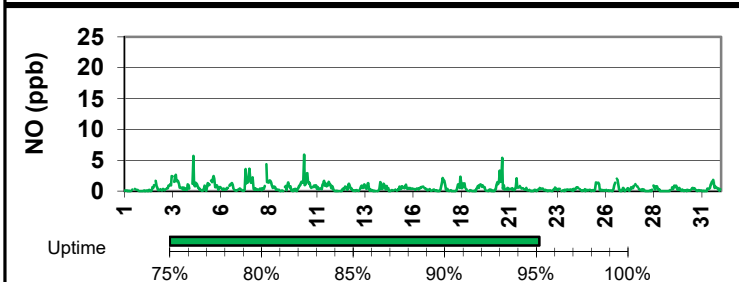
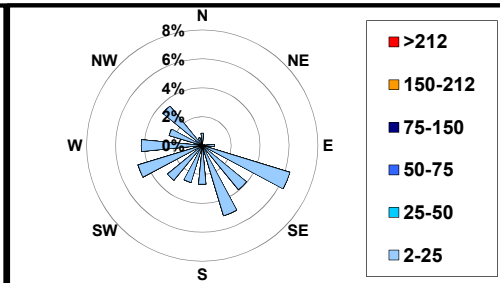
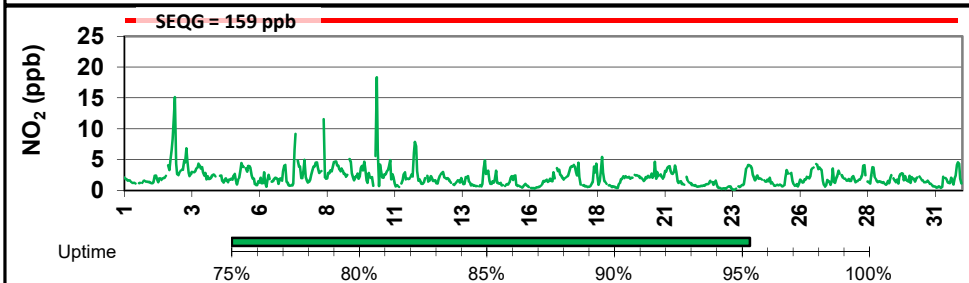
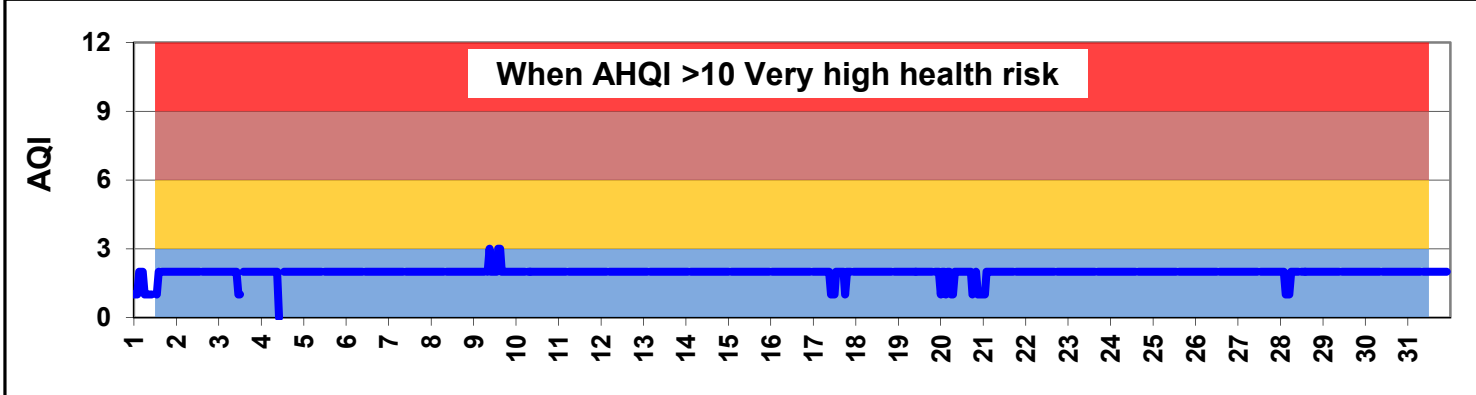
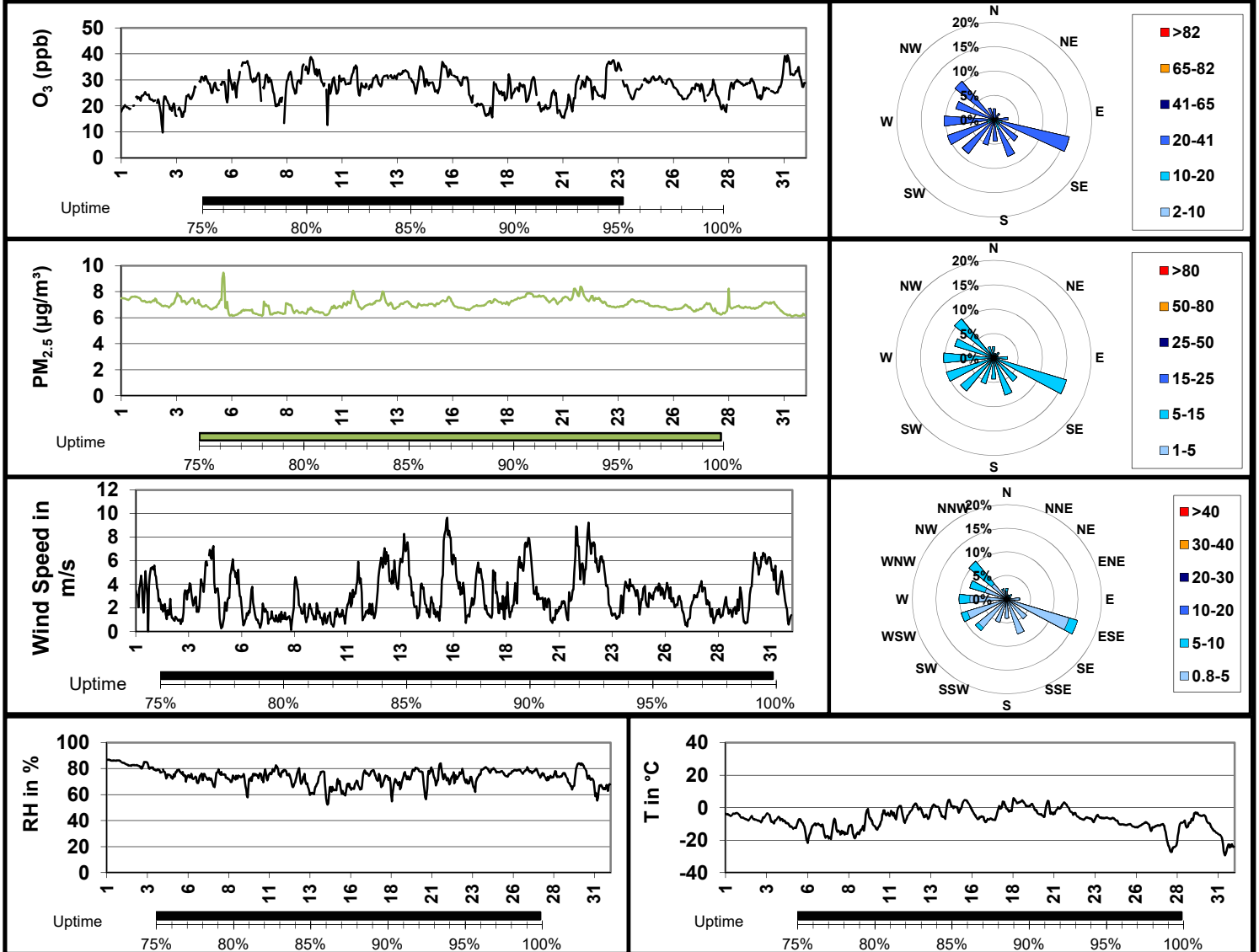


SESAA - December 2018 Weyburn Station Report

Parm	Average	Uptime	1-hour			8-hour / 24-hour			Exceed 1hr / 24hr
			Max	Objective	Max Day and Time	Max	Objective	Max Day	
NO (ppb)	0.5	95.2%	6.0	-	Dec-10 08:00	1.3	-	Dec-10	- / -
NO ₂ (ppb)	2.1	95.3%	18.3	159	Dec-10 08:00	3.7	106	Dec-08	0 / 0
NO _x (ppb)	2.6	95.2%	24.3	-	Dec-10 08:00	4.6	-	Dec-10	- / -
SO ₂ (ppb)	3.5	95.6%	42.3	172	Dec-02 21:00	9.8	-	Dec-02	0 / 0
H ₂ S (ppb)	0.1	95.2%	4.4	11	Dec-10 05:00	0.8	3.6	Dec-10	0 / 0
O ₃ (ppb)	27.0	95.2%	39.5	82	Dec-31 04:00	32.2	63	Dec-09	0 / 0
PM _{2.5} (µg/m ³)	7.0	99.9%	9.5	-	Dec-05 15:00	7.8	30	Dec-21	- / 0



SESAA - December 2018 Weyburn Station Report



Elevated Reading Summary

Date	NO ₂	SO ₂	H ₂ S	O ₃	PM _{2.5}	WS	WD	Temp	RH
12/10/2018 5:00	0.8	2.1	4.4	28.6	6.2	0.9	164.5	-13.4	74.8

Update Summary:

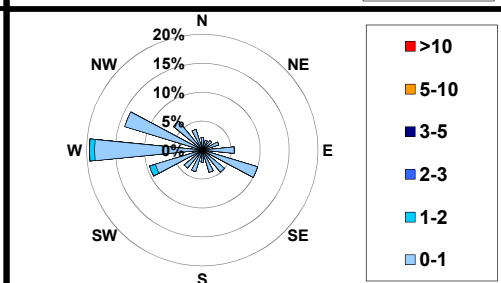
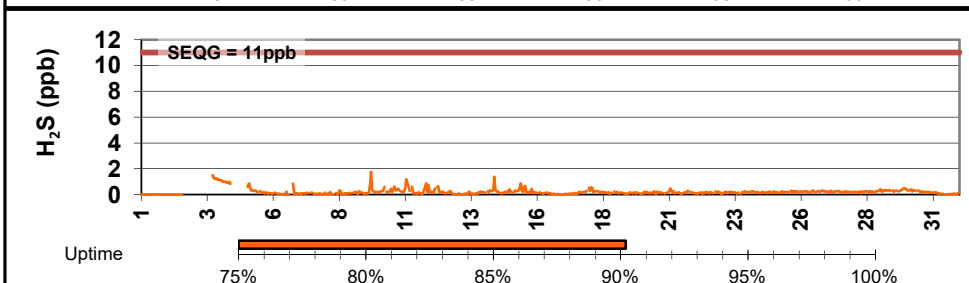
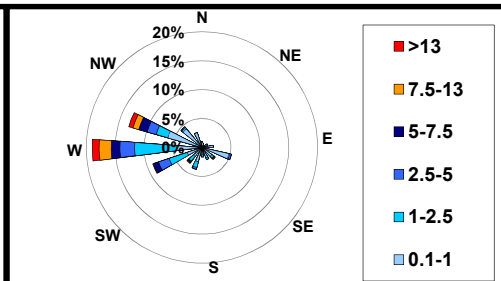
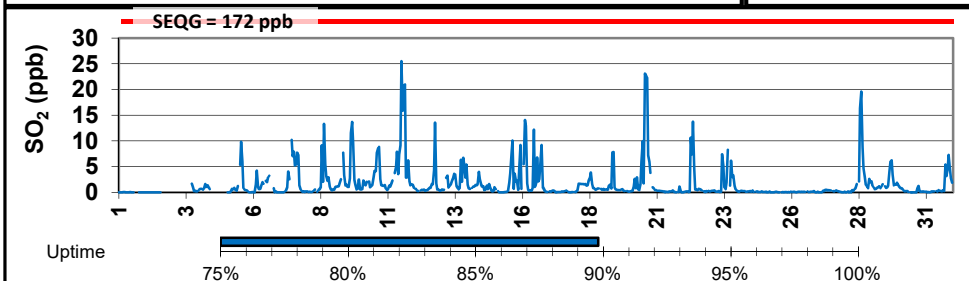
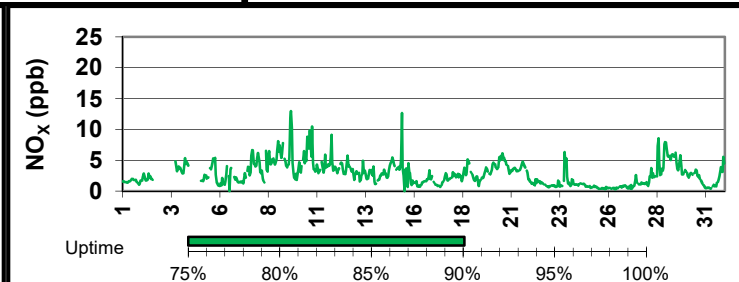
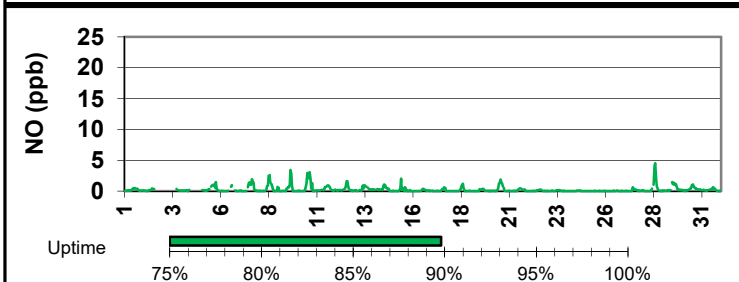
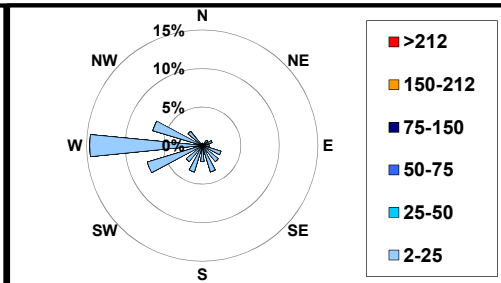
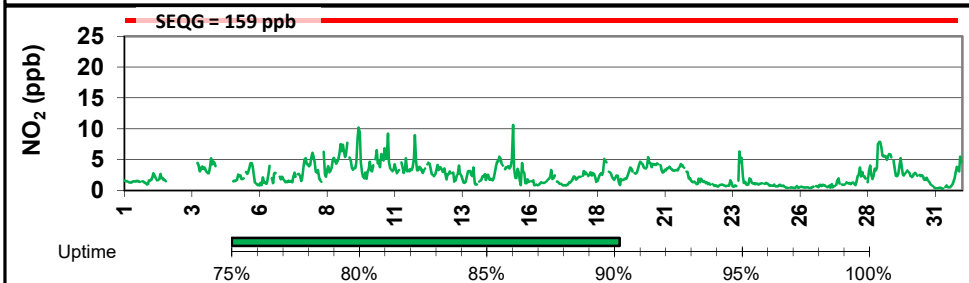
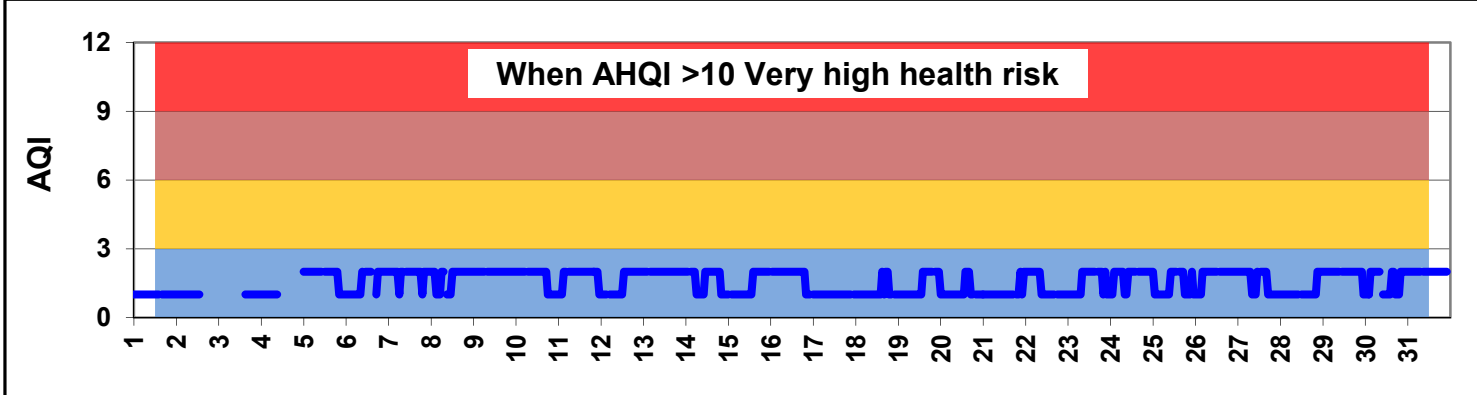
There were no exceedance in the month of December 2018, the maximum hydrogen sulphide was during calm winds

Instruments uptime remained >95%

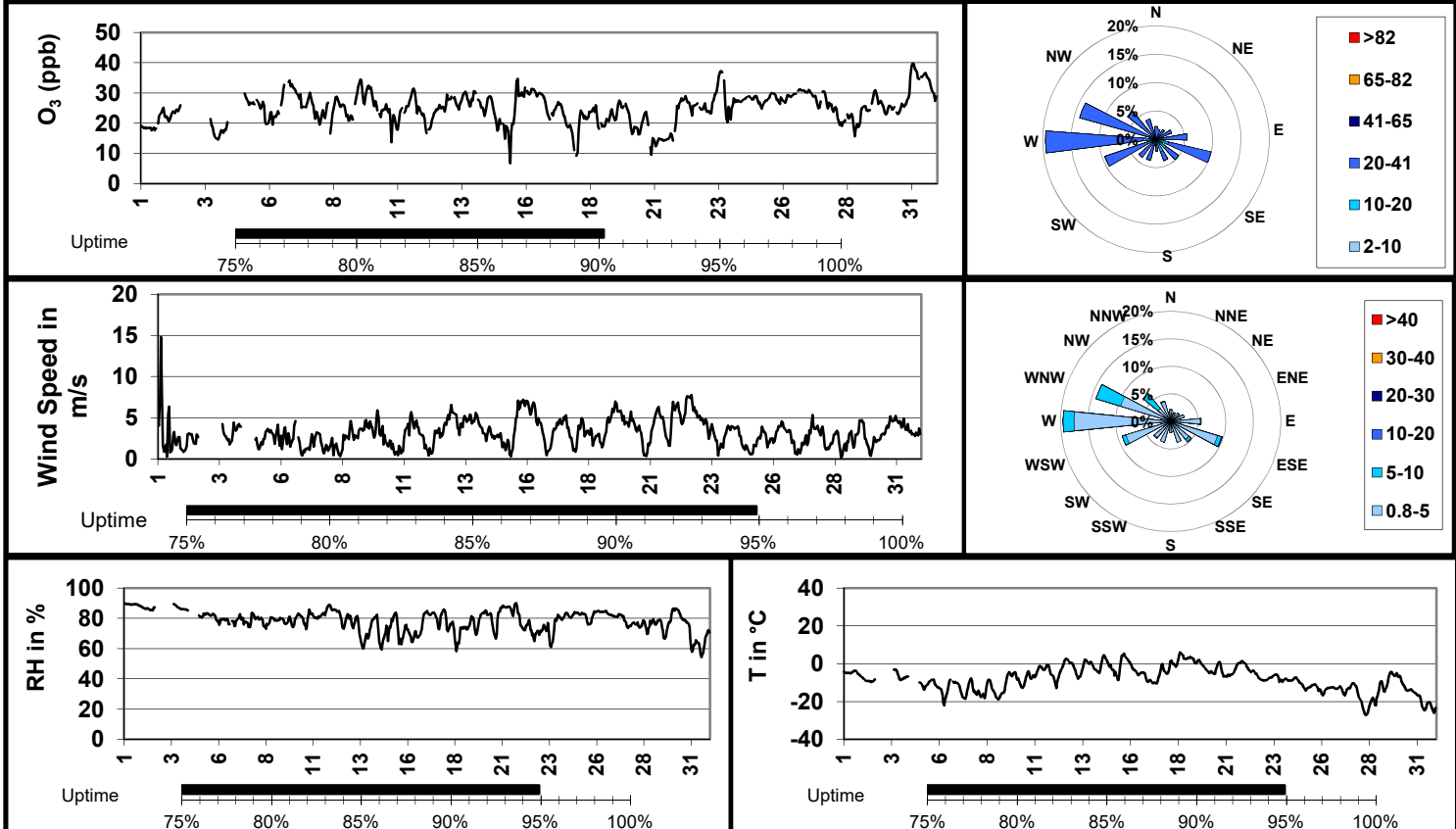
Data showed a low Air Quality Health Index for the month

SESAA - December 2018 Glen Ewen Station Report

Parm	Average	Uptime	1-hour			8-hour / 24-hour			Exceed 1hr / 24hr
			Max	Objective	Max Day and Time	Max	Objective	Max Day	
NO (ppb)	0.3	89.8%	4.5	-	Dec-28 14:00	0.7	-	Dec-10	- / -
NO ₂ (ppb)	2.5	90.2%	10.6	159	Dec-15 09:00	5.0	106	Dec-09	0 / 0
NO _x (ppb)	2.8	90.1%	13.0	-	Dec-09 16:00	5.5	-	Dec-09	- / -
SO ₂ (ppb)	1.7	89.8%	25.5	172	Dec-11 12:00	6.1	-	Dec-11	0 / 0
H ₂ S (ppb)	0.2	90.2%	1.8	11	Dec-09 17:00	0.4	3.6	Dec-04	0 / 0
O ₃ (ppb)	24.8	90.2%	39.7	82	Dec-31 01:00	33.2	63	Dec-31	0 / 0
PM _{2.5} (µg/m ³)									



SESAA - December 2018 Glen Ewen Station Report



Elevated Reading Summary

Date	NO ₂	SO ₂	H ₂ S	O ₃	PM _{2.5}	WS	WD	Temp	RH
12/9/2018 17:00	9.3	9.8	1.8	26.3	-	3.8	268.6	-5.3	79.6

Update Summary:

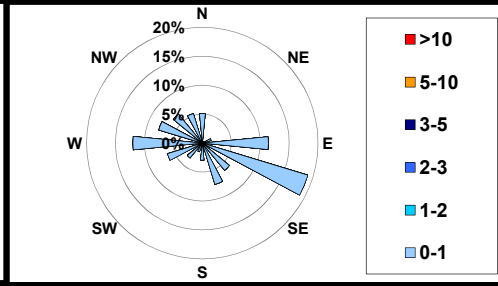
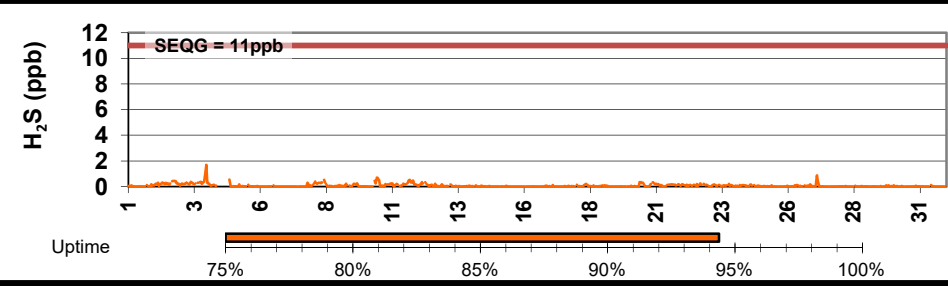
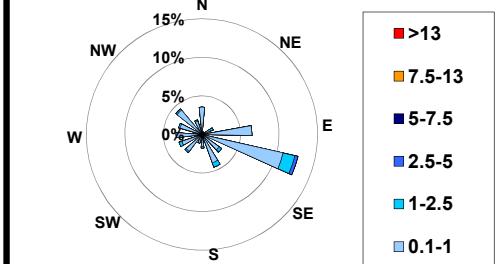
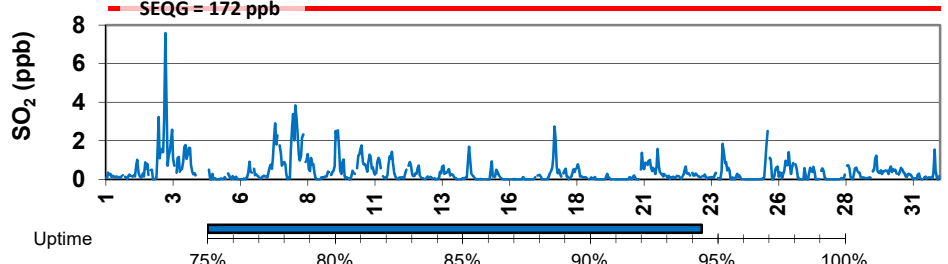
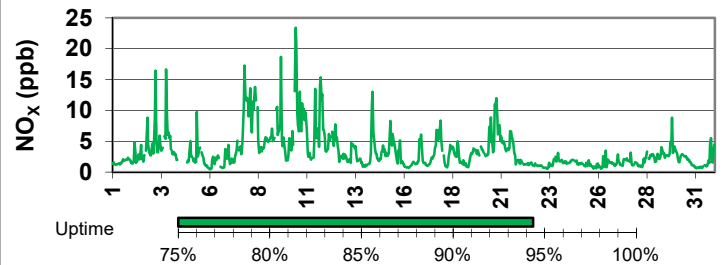
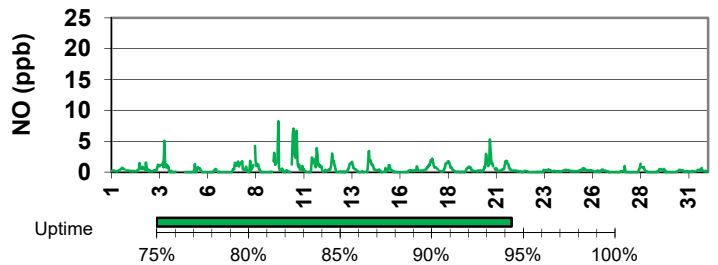
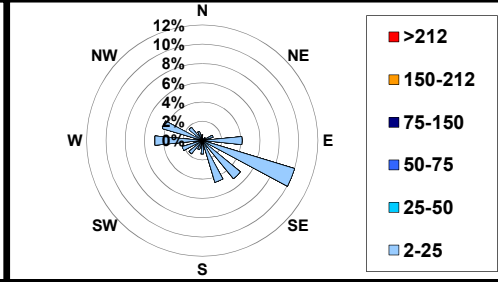
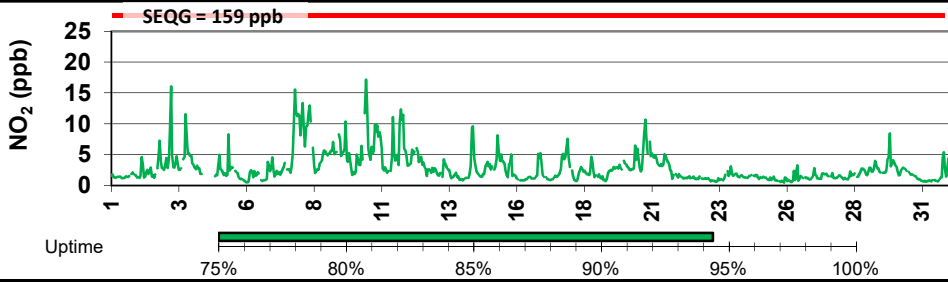
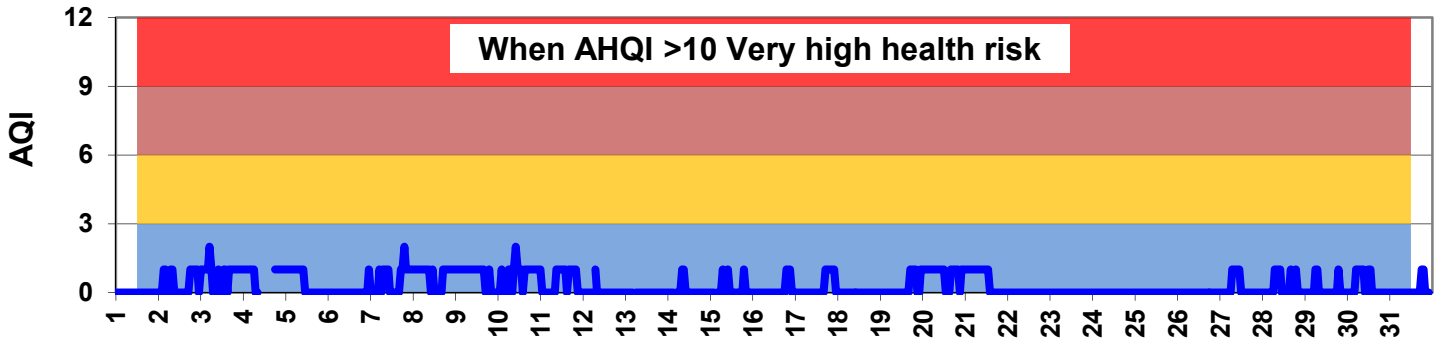
There were no exceedance in the month of December 2018, the maximum hydrogen sulphide was during winds from the south

There were power failures early in the month and equipment remained near 90% uptime

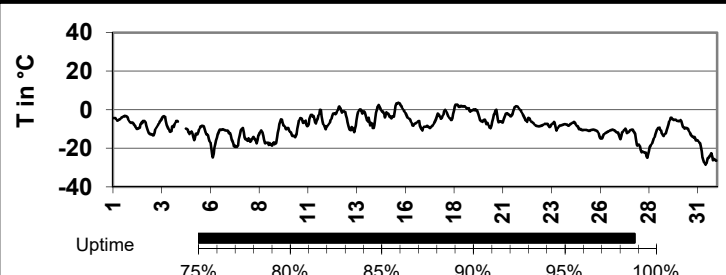
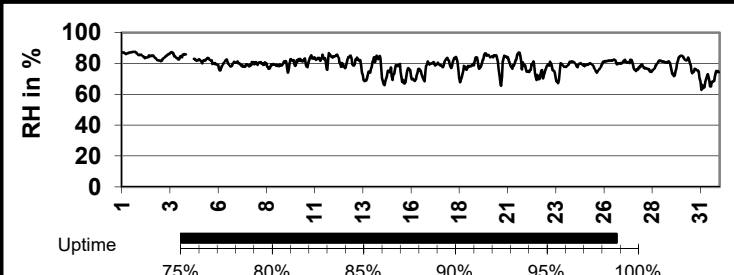
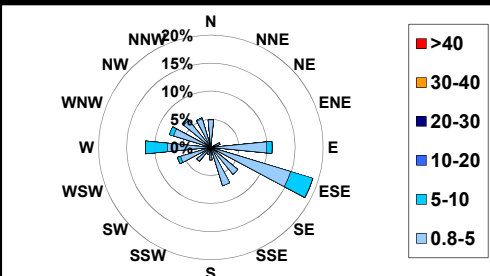
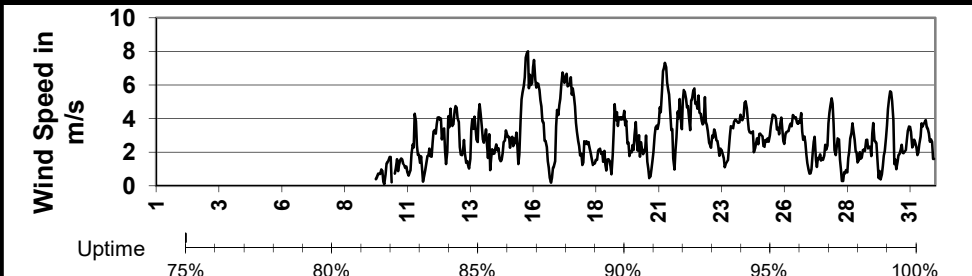
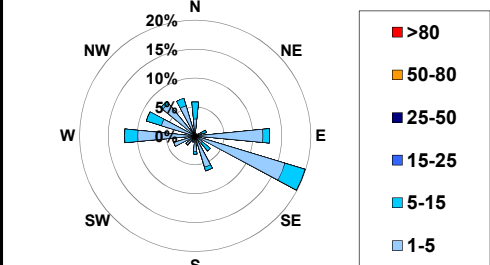
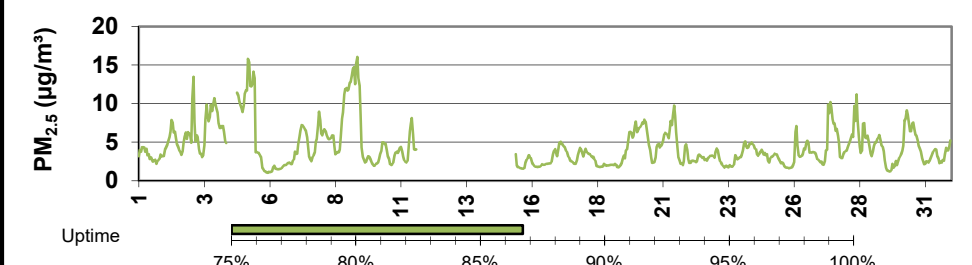
Data showed a low Air Quality Health Index (AQHI) for the month (in the absence of PM2.5)

SESAA - December 2018 Stoughton Station Report

Parm	Average	Uptime	1-hour			8-hour / 24-hour			Exceed 1hr / 24hr
			Max	Objective	Max Day and Time	Max	Objective	Max Day	
NO (ppb)	0.5	94.4%	8.2	-	Dec-09 16:00	1.5	-	Dec-10	- / -
NO ₂ (ppb)	2.9	94.4%	17.2	159	Dec-10 10:00	6.6	106	Dec-10	0 / 0
NO _x (ppb)	3.4	94.4%	23.4	-	Dec-10 10:00	8.2	-	Dec-10	- / -
SO ₂ (ppb)	0.4	94.4%	7.6	172	Dec-03 05:00	1.6	-	Dec-03	0 / 0
H ₂ S (ppb)	0.1	94.4%	1.7	11	Dec-03 23:00	0.3	3.6	Dec-03	0 / 0
O ₃ (ppb)									
PM _{2.5} (µg/m ³)	4.4	86.7%	16.0	-	Dec-09 08:00	8.0	30	Dec-09	- / 0



SESAA - December 2018 Stoughton Station Report



Elevated Reading Summary

Date	NO ₂	SO ₂	H ₂ S	O ₃	PM _{2.5}	WS	WD	Temp	RH
12/3/2018 23:00	4.9	1.8	1.7	-	9.5	0.0	0.0	-11.5	82.6

Update Summary:

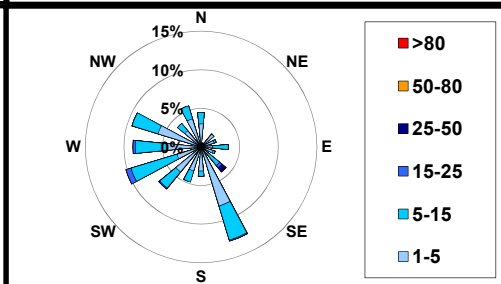
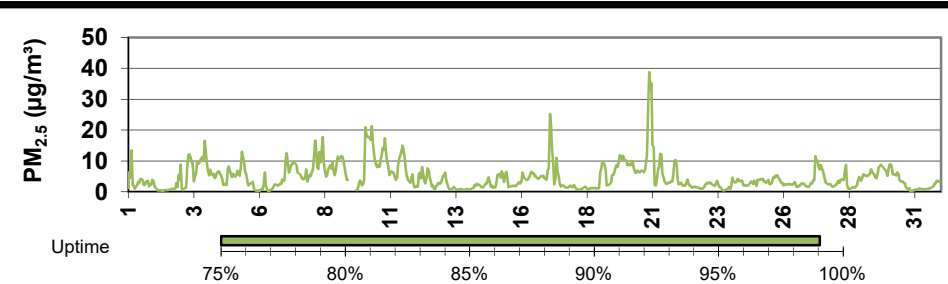
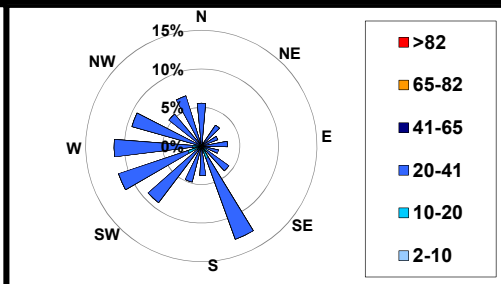
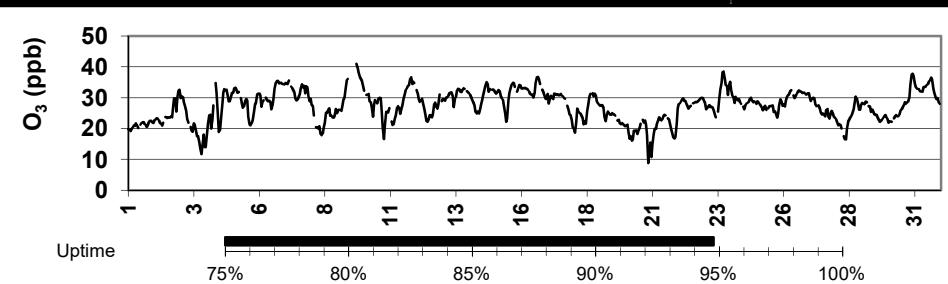
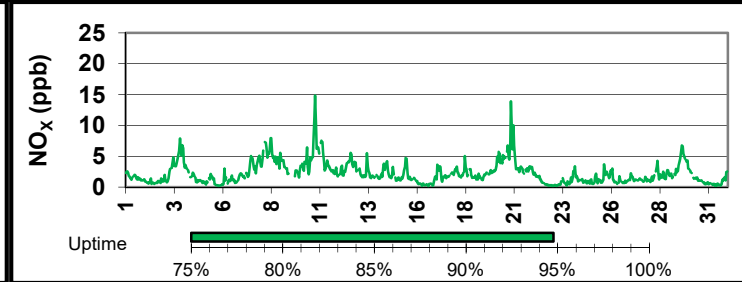
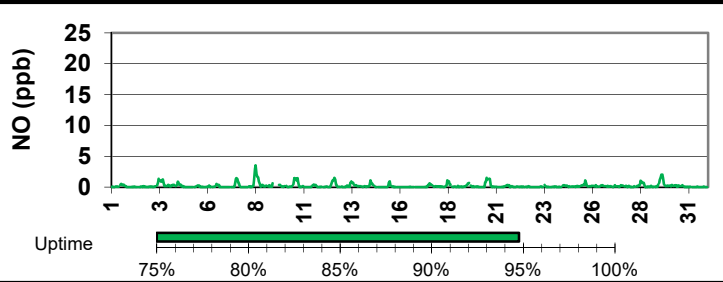
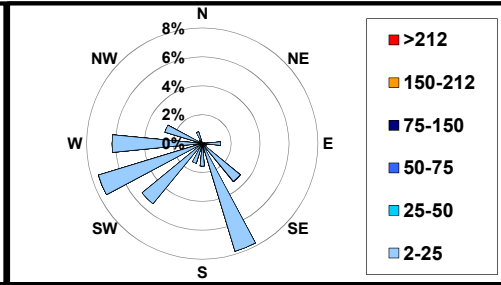
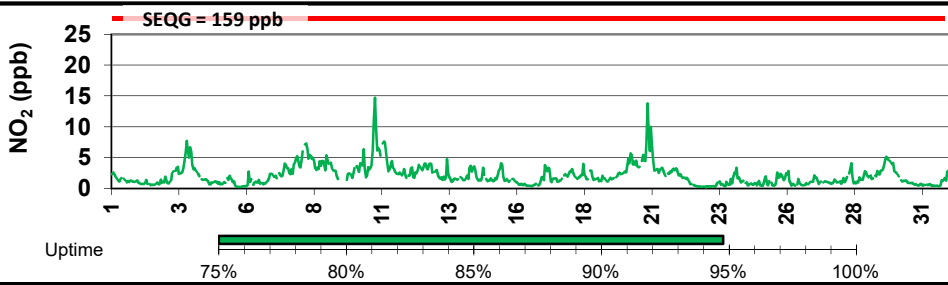
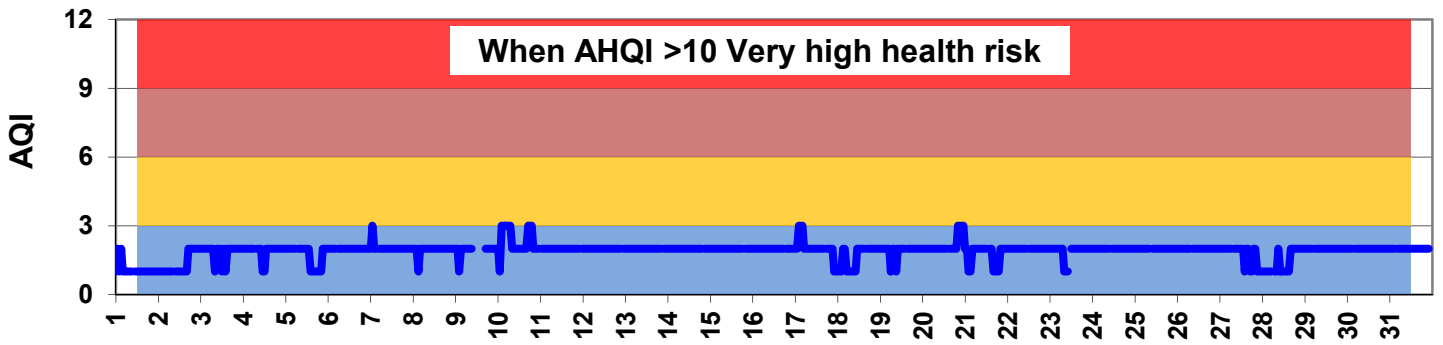
There were no exceedance in the month of December 2018

Instruments uptime remained >95% with the exception of wind speed and direction which was experiencing signal loss from November, attempts were made to re-establish and equipment was fully operating on Dec 9th. In addition there was an equipment failure from the Sharp PM2.5 - it was corrected after a site inspection on Dec 15

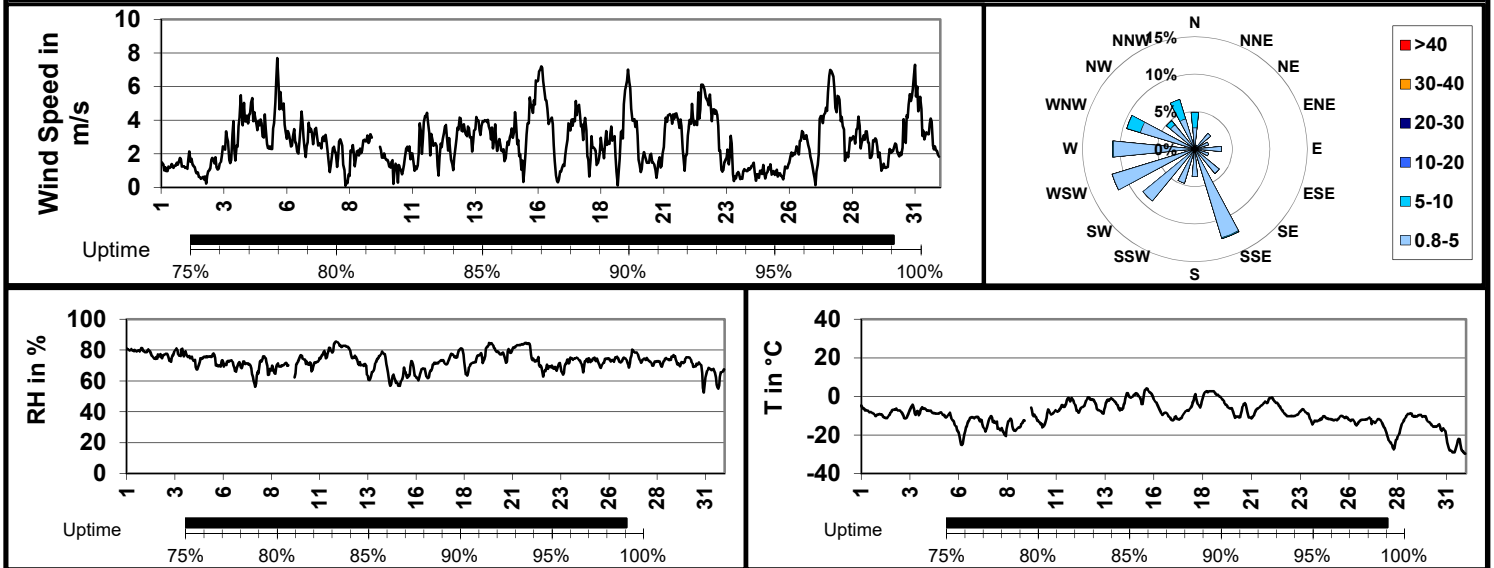
Data showed a low Air Quality Health Index (AQHI) for the month (in the absence of ozone)

SESAA - December 2018 Estherhazy Station Report

Parm	Average	Uptime	1-hour			8-hour / 24-hour			Exceed 1hr / 24hr
			Max	Objective	Max Day and Time	Max	Objective	Max Day	
NO (ppb)	0.2	94.8%	3.5	-	Dec-08 12:00	0.7	-	Dec-08	- / -
NO ₂ (ppb)	2.1	94.8%	14.7	159	Dec-10 18:00	5.1	106	Dec-20	0 / 0
NO _x (ppb)	2.3	94.8%	14.8	-	Dec-10 18:00	5.4	-	Dec-20	- / -
SO ₂ (ppb)									
H ₂ S (ppb)									
O ₃ (ppb)	27.3	94.8%	40.9	82	Dec-09 17:00	31.3	63	Dec-31	0 / 0
PM _{2.5} (µg/m ³)	4.7	99.1%	38.8	-	Dec-20 21:00	12.9	30	Dec-10	- / 0



SESAA - December 2018 Estherhazy Station Report



Elevated Reading Summary

Date	NO ₂	SO ₂	H ₂ S	O ₃	PM _{2.5}	WS	WD	Temp	RH
12/20/2018 21:00	9.3	-	-	12.5	38.8	1.2	132.0	-10.9	78.2

Update Summary:

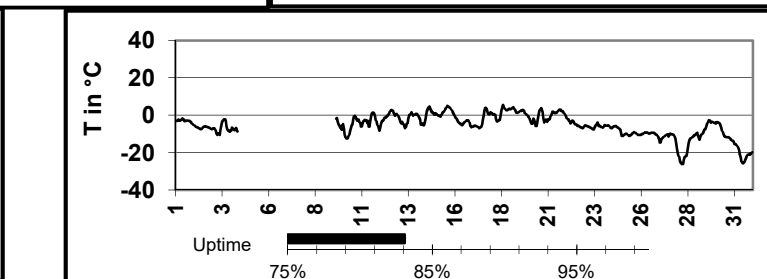
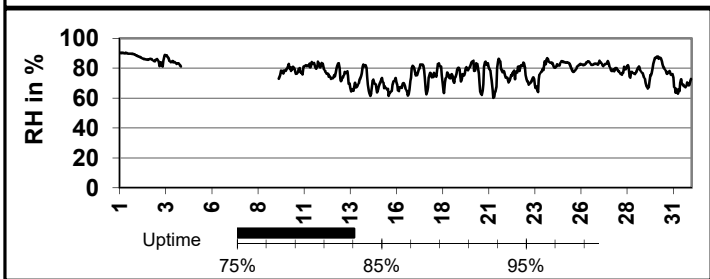
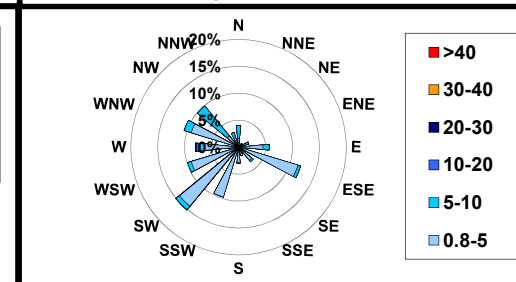
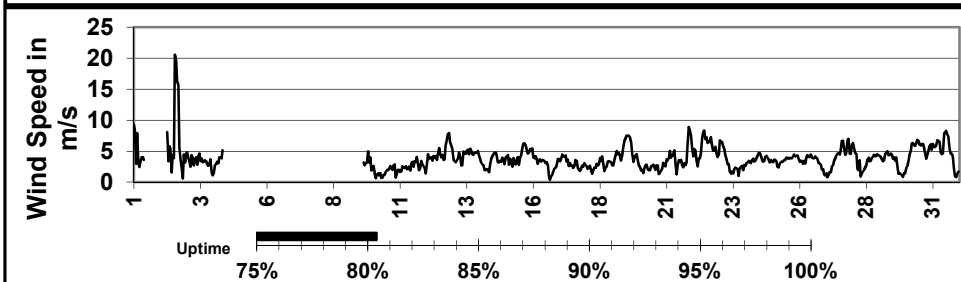
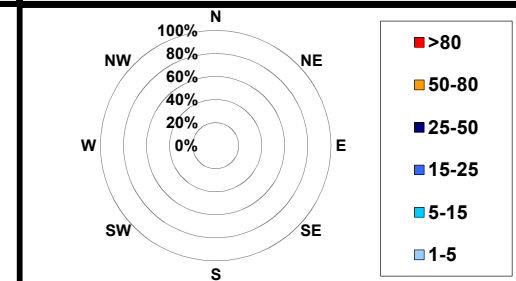
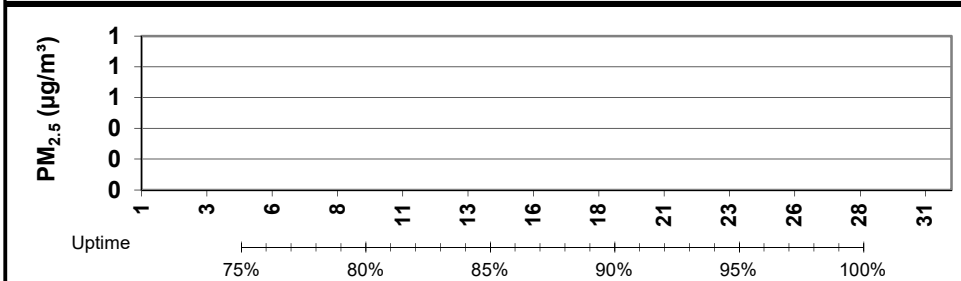
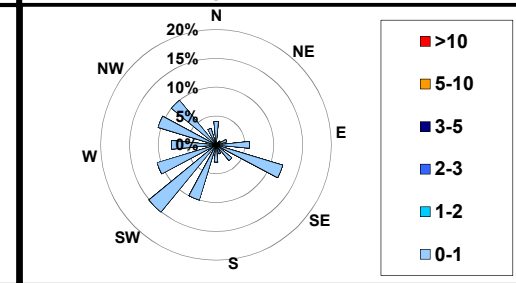
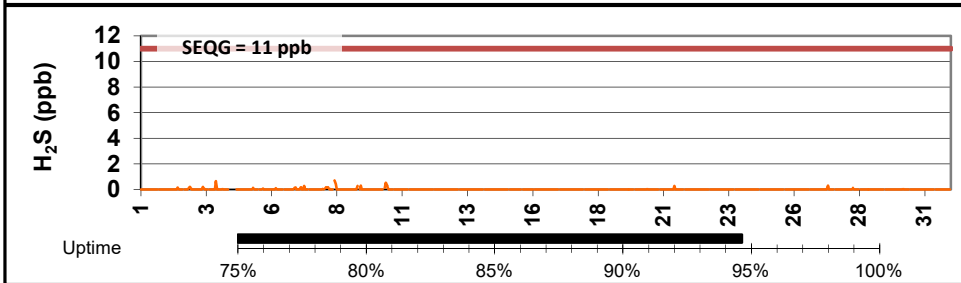
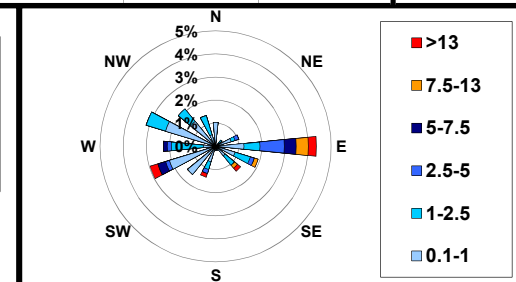
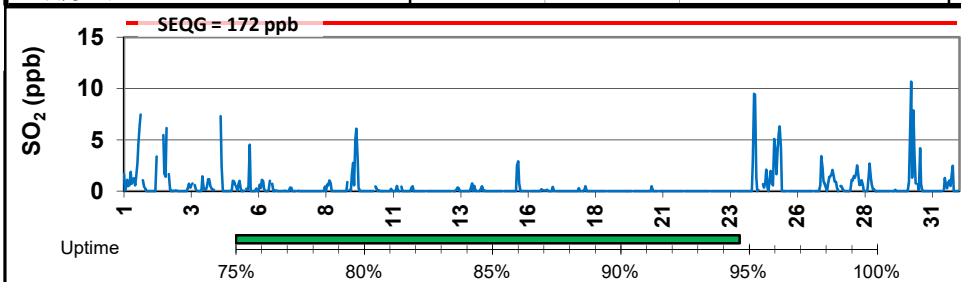
There were no exceedance in the month of December 2018

All instruments remained >94% uptime. Seven hour power failure occurred on Dec 9, 2018

Data showed a low Air Quality Health Index (AQHI) for the month.

SESAA - December 2018 Torquay Station Report

Parm	Average	Uptime	1-hour			8-hour / 24-hour			Exceed 1hr / 24hr
			Max	Objective	Max Day and Time	Max	Objective	Max Day	
SO ₂ (ppb)	0.4	94.2%	10.7	172	Dec-30 05:00	4.4	48	Dec-02	0 / 0
H ₂ S (ppb)	0.0	94.6%	0.7	11	Dec-08 10:00	0.1	4	Dec-08	0 / 0
PM _{2.5} (µg/m ³)									

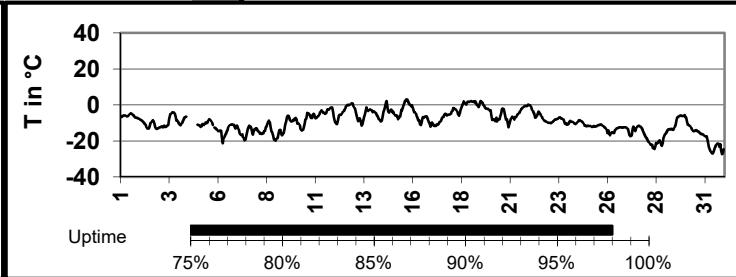
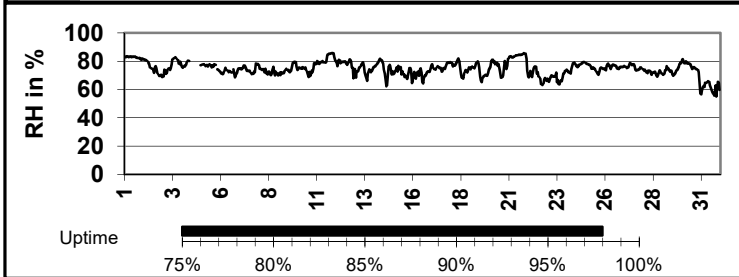
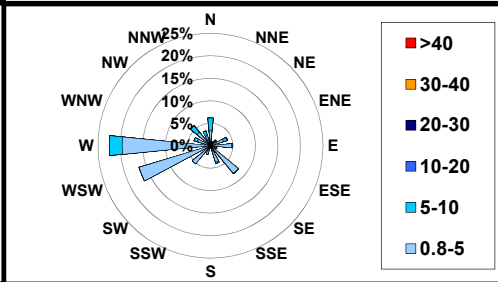
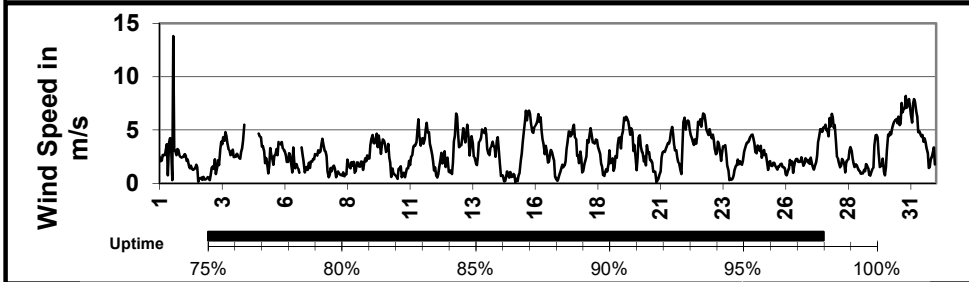
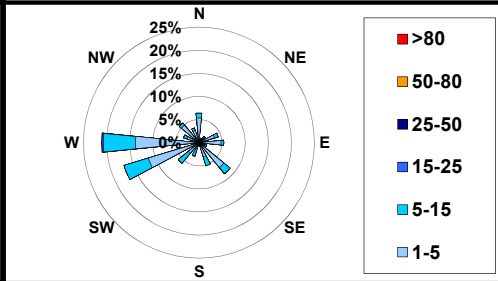
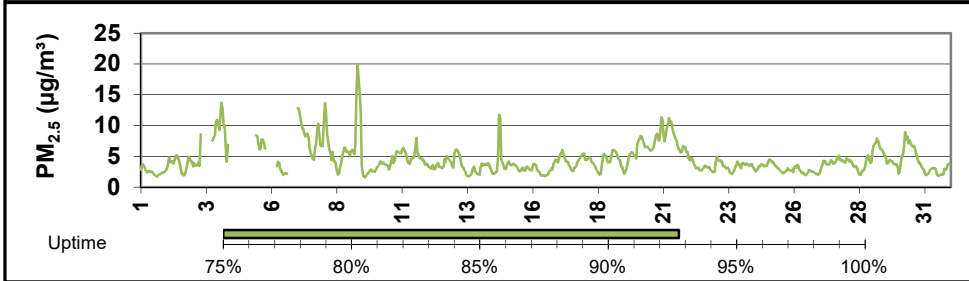
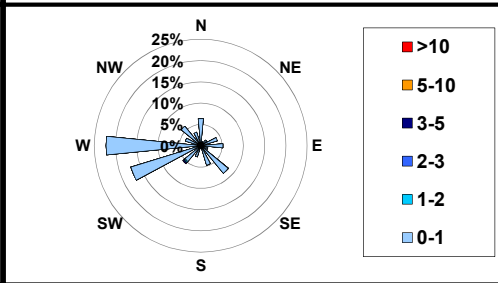
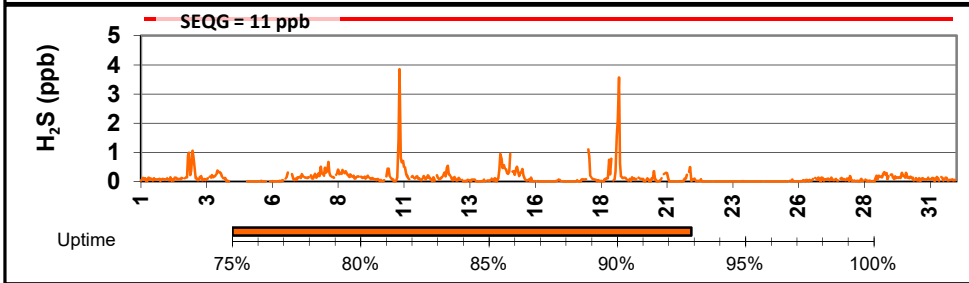
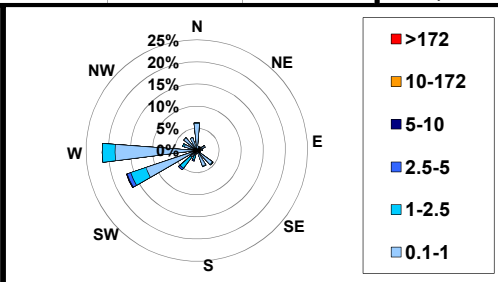
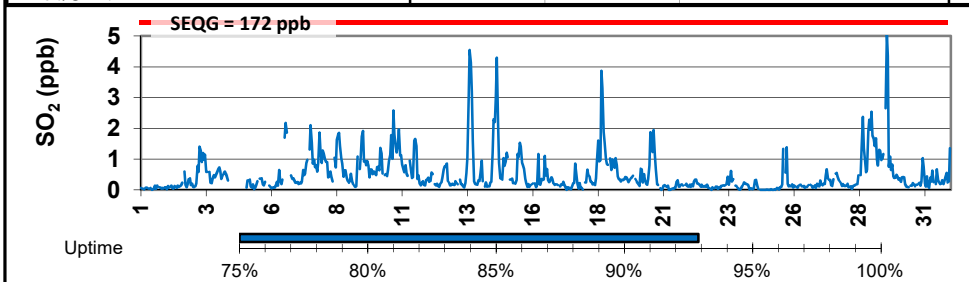


Update Summary

There were no exceedences during the month of December 2018
 There have been service issues with station, flow warning issues on SO₂ and loss of meterology for several days - attempts to correct have been made

SESAA - December 2018 Wauchope Station Report

Parm	1-hour					8-hour / 24-hour			Exceed 1hr / 24hr
	Average	Uptime	Max	Objective	Max Day and Time	Max	Objective	Max Day	
SO ₂ (ppb)	0.5	92.9%	5.1	172	Dec-29 13:00	1.3	-	Dec-29	0 / 0
H ₂ S (ppb)	0.1	92.9%	3.9	11	Dec-10 20:00	0.4	3.6	Dec-19	0 / 0
PM _{2.5} (µg/m ³)	4.5	92.8%	19.9	-	Dec-09 07:00	8.2	30	Dec-07	- / 0



Elevated Reading Summary

Date	NO ₂	SO ₂	H ₂ S	O ₃	PM _{2.5}	WS	WD	Temp	RH
12/9/2018 7:00	-	1.1	3.9	-	19.9	2.6	261.0	-16.8	71.5

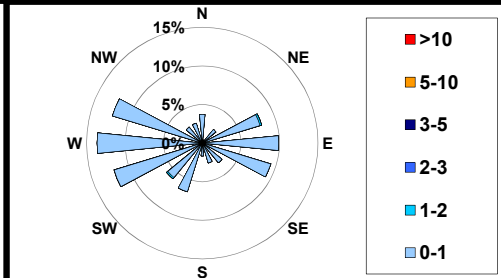
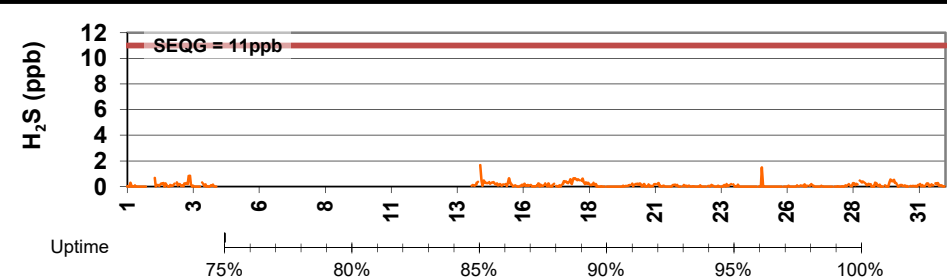
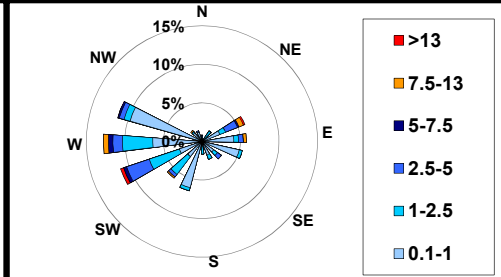
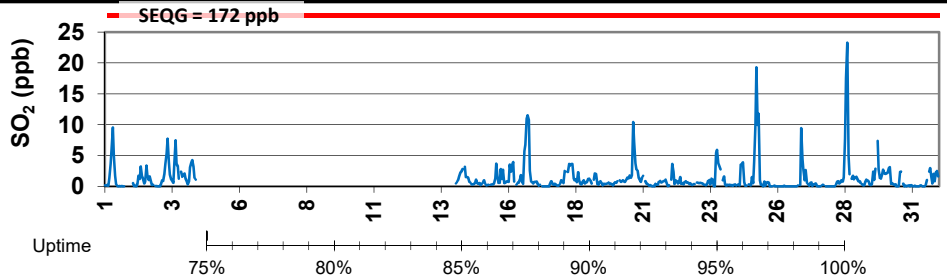
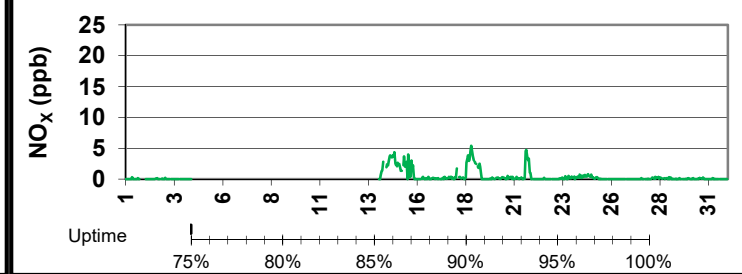
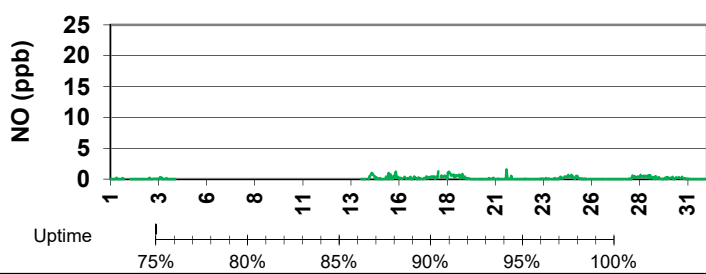
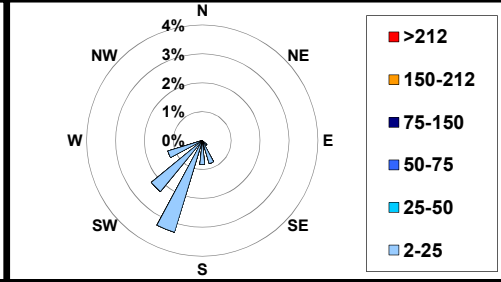
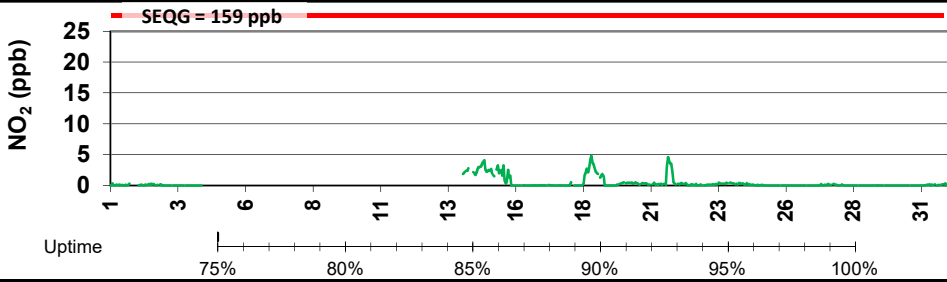
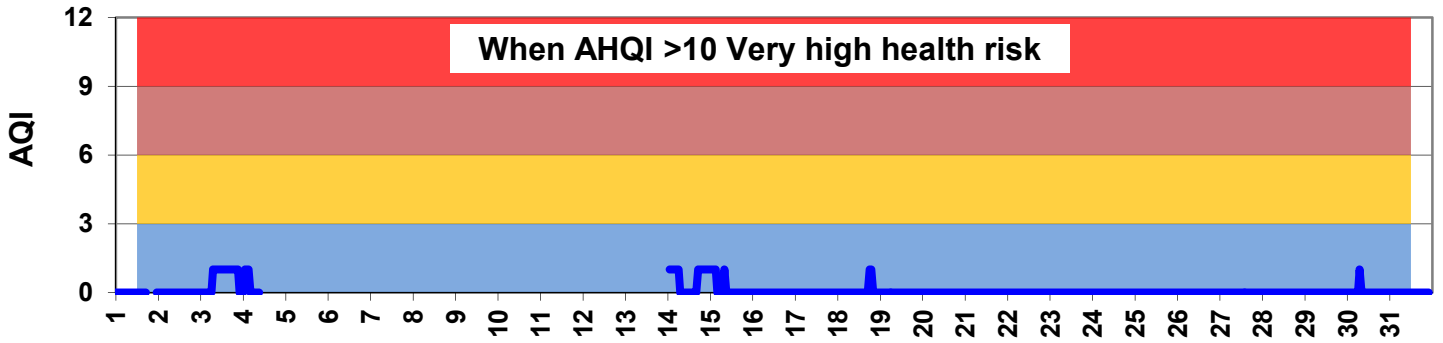
Update Summary:

There were no readings above the SEQG for the month of December 2018

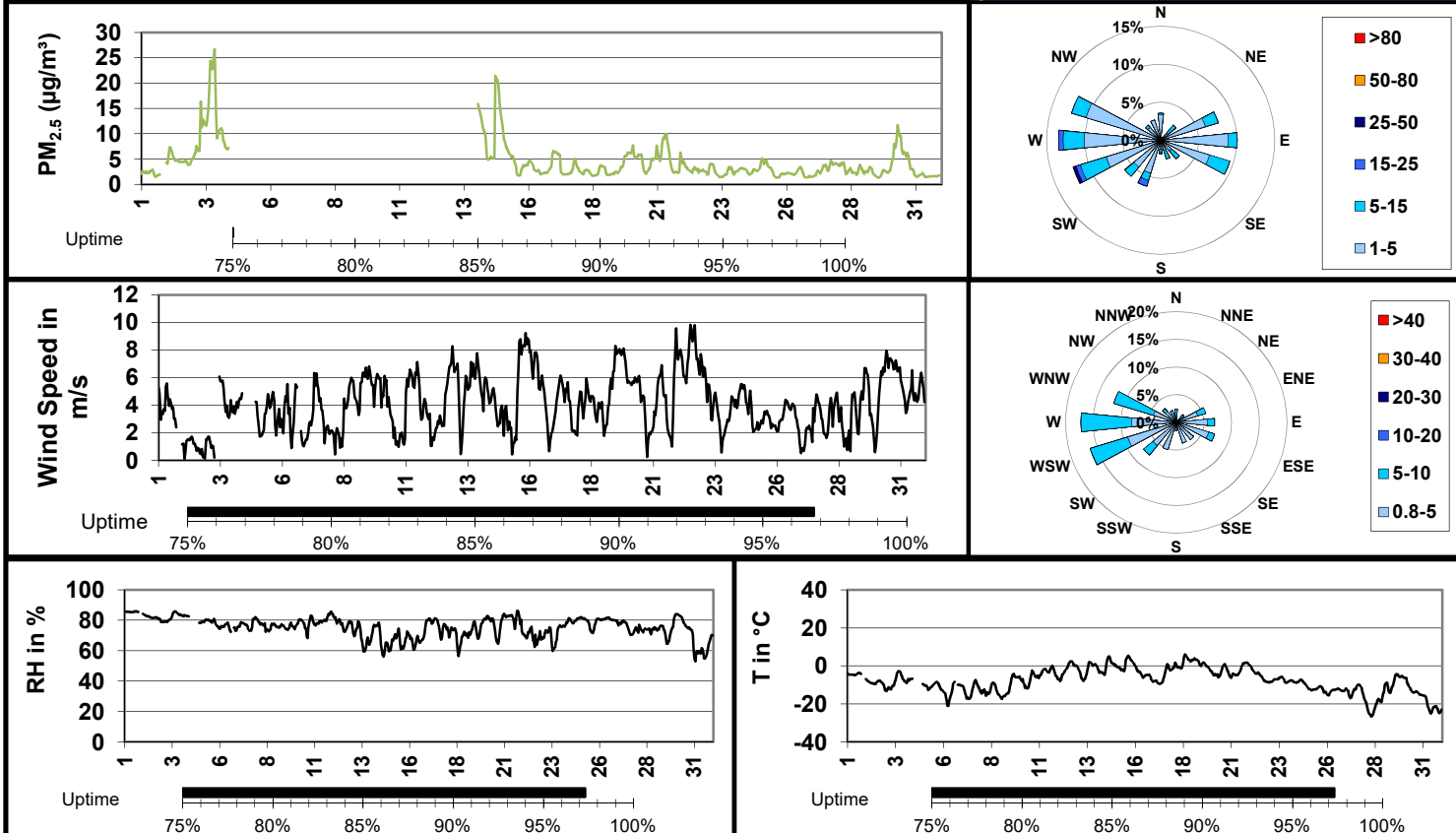
All instruments remained >93% uptime, with one major power failure and two minor causing equipment failure

SESAA - December 2018 Oxbow Station Report

Parm	Average	Uptime	1-hour			8-hour / 24-hour			Exceed 1hr / 24hr
			Max	Objective	Max Day and Time	Max	Objective	Max Day	
NO (ppb)	0.2	64.8%	2.2	-	Dec-14 08:00	0.6	-	Dec-18	- / -
NO ₂ (ppb)	0.4	64.8%	4.8	159	Dec-18 19:00	2.2	106	Dec-14	0 / 0
NO _x (ppb)	0.4	64.8%	5.4	-	Dec-18 19:00	2.1	-	Dec-14	- / -
SO ₂ (ppb)	1.3	65.2%	23.3	172	Dec-28 14:00	2.9	-	Dec-16	0 / 0
H ₂ S (ppb)	0.1	65.2%	1.7	11	Dec-14 09:00	0.3	3.6	Dec-14	0 / 0
O ₃ (ppb)									
PM _{2.5} (µg/m ³)	4.4	68.3%	26.7	-	Dec-03 20:00	13.5	30	Dec-03	- / 0



SESAA - December 2018 Oxbow Station Report



Elevated Reading Summary

Date	NO ₂	SO ₂	H ₂ S	O ₃	PM _{2.5}	WS	WD	Temp	RH
12/14/2018 9:00	0.0	3.1	1.7	-	5.5	4.1	232.6	-4.7	78.5

Update Summary:

There were no exceedance in the month of December 2018, the maximum hydrogen sulphide was during winds from the southeast

Instruments uptime was near 65% due to instrument failure following power failure, attempts were made to re-establish, which was finally made Dec 13, 2018

Data showed a low Air Quality Health Index (AQHI) for the month (in the absence of ozone)