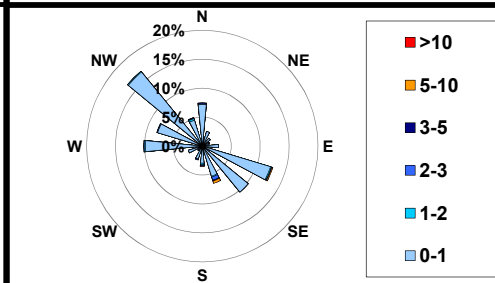
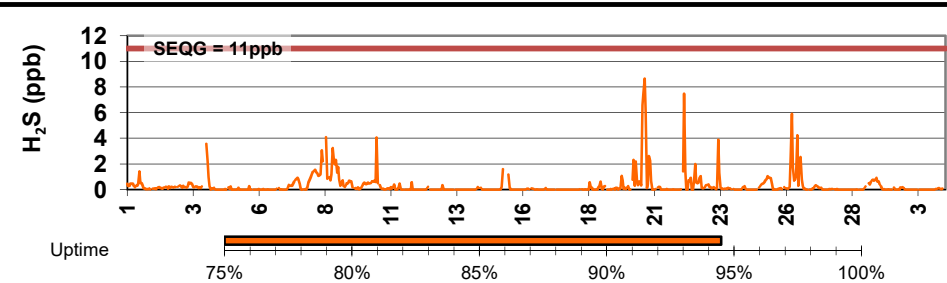
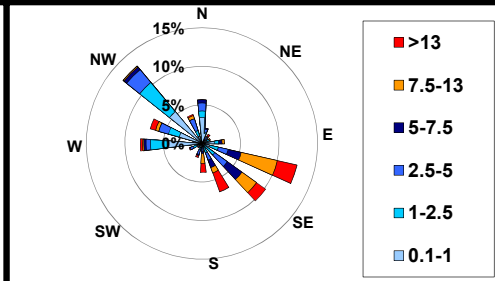
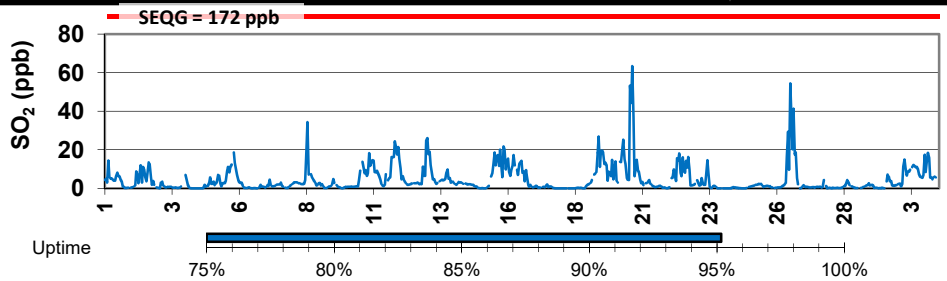
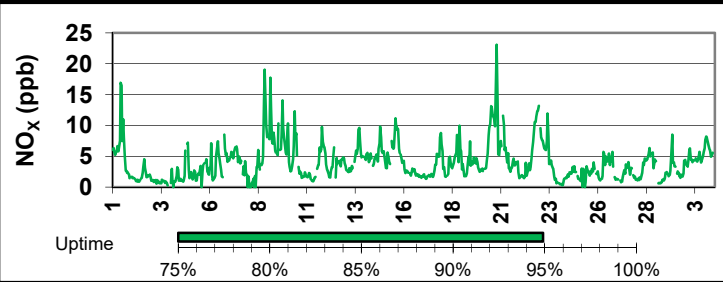
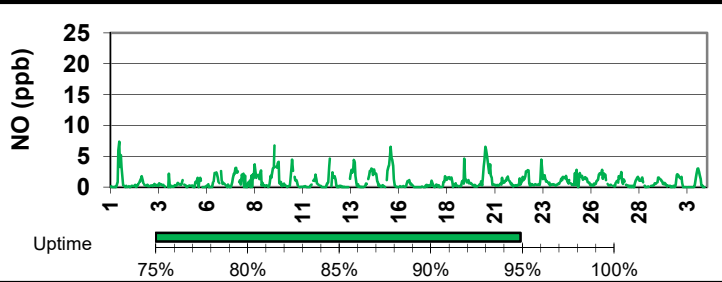
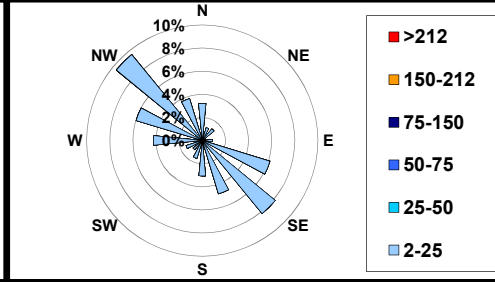
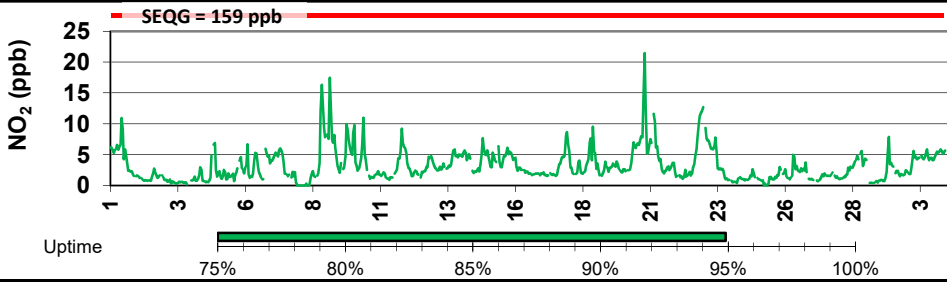
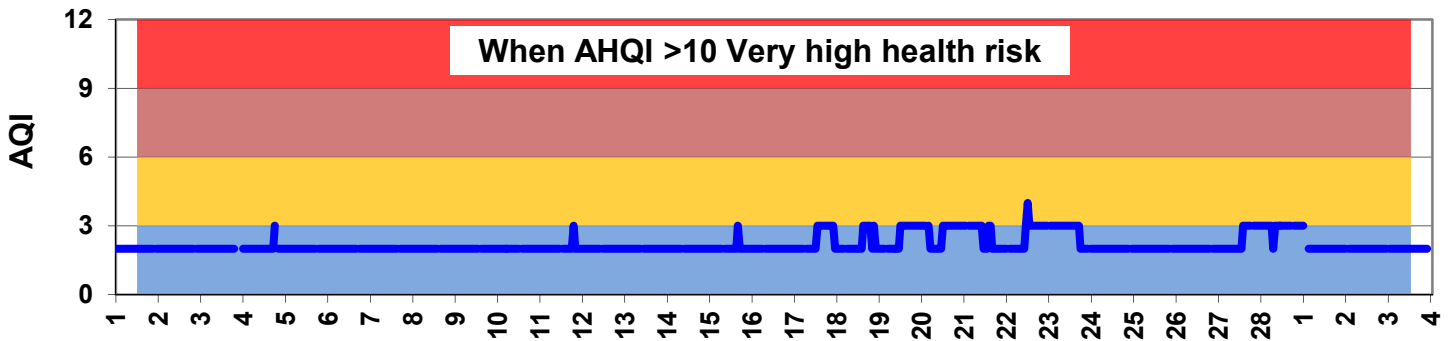
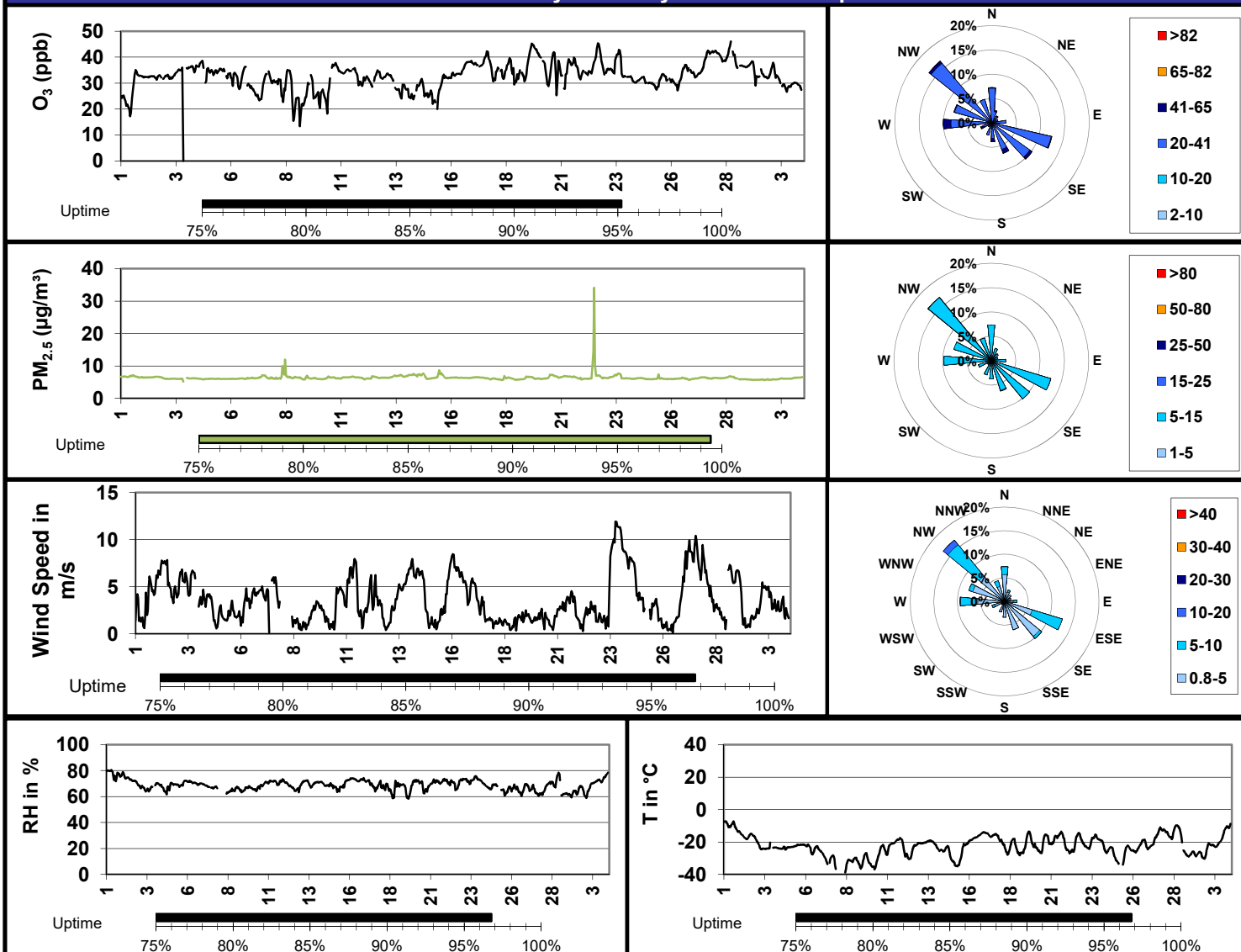


## SESAA - February 2019 Weyburn Station Report

Parm	Average	Uptime	1-hour			8-hour / 24-hour			Exceed 1hr / 24hr
			Max	Objective	Max Day and Time	Max	Objective	Max Day	
NO (ppb)	0.9	94.9%	7.4	-	Feb-01 11:00	2.0	-	Feb-20	- / -
NO <sub>2</sub> (ppb)	3.2	94.9%	21.4	159	Feb-20 19:00	6.3	106	Feb-09	0 / 0
NO <sub>x</sub> (ppb)	4.0	94.9%	23.1	-	Feb-20 19:00	8.2	-	Feb-20	- / -
SO <sub>2</sub> (ppb)	4.6	95.2%	63.4	172	Feb-20 15:00	16.2	-	Feb-20	0 / 0
H <sub>2</sub> S (ppb)	0.3	94.5%	8.6	11	Feb-20 15:00	1.8	3.6	Feb-20	0 / 0
O <sub>3</sub> (ppb)	32.7	95.2%	46.1	82	Feb-28 17:00	39.0	63	Feb-28	0 / 0
PM <sub>2.5</sub> (µg/m <sup>3</sup> )	6.4	99.5%	34.1	-	Feb-22 12:00	8.2	30	Feb-22	- / 0



## SESAA - February 2019 Weyburn Station Report



### Elevated Reading Summary

Date	NO <sub>2</sub>	SO <sub>2</sub>	H <sub>2</sub> S	O <sub>3</sub>	PM <sub>2.5</sub>	WS	WD	Temp	RH
2/20/2019 15:00	7.4	63.4	8.6	41.3	7.3	0.9	148.9	-15.5	62.4

#### Update Summary:

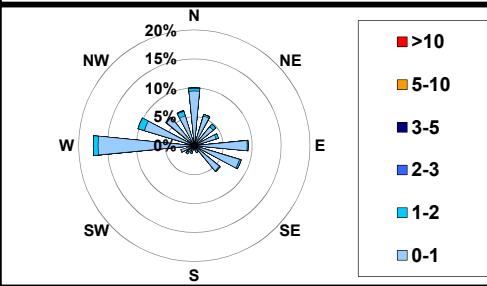
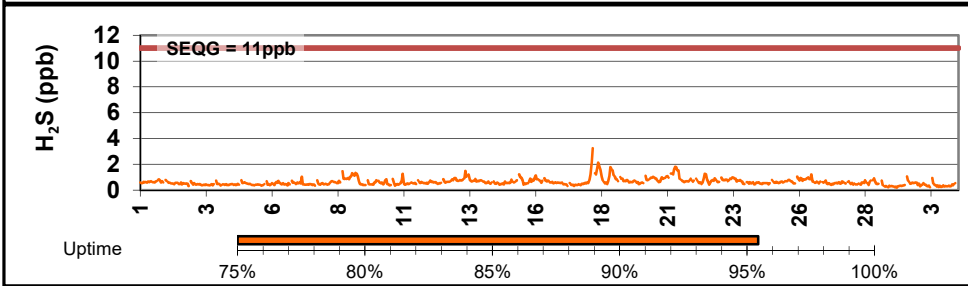
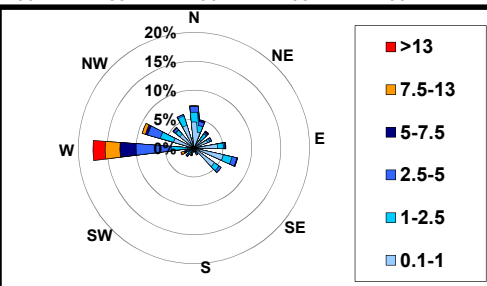
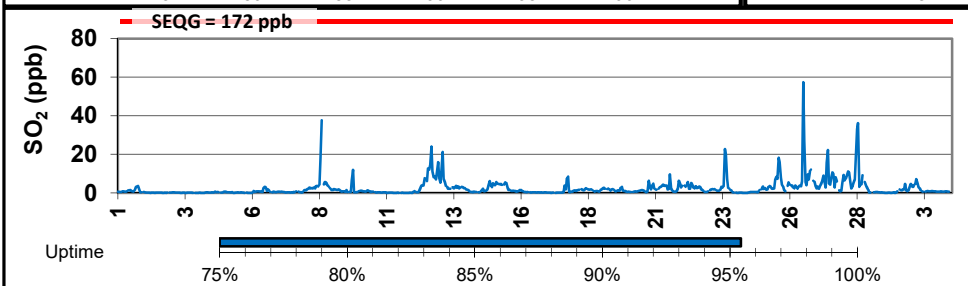
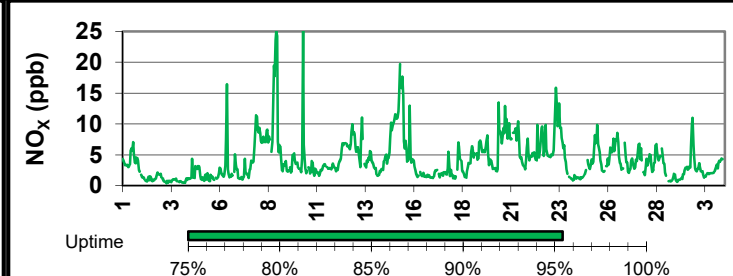
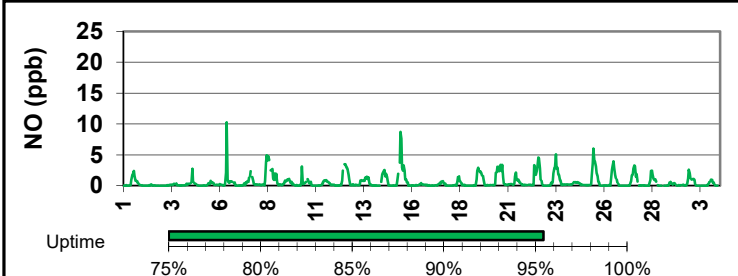
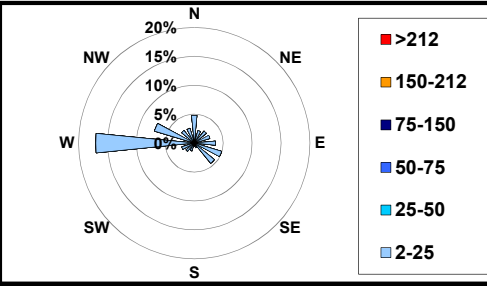
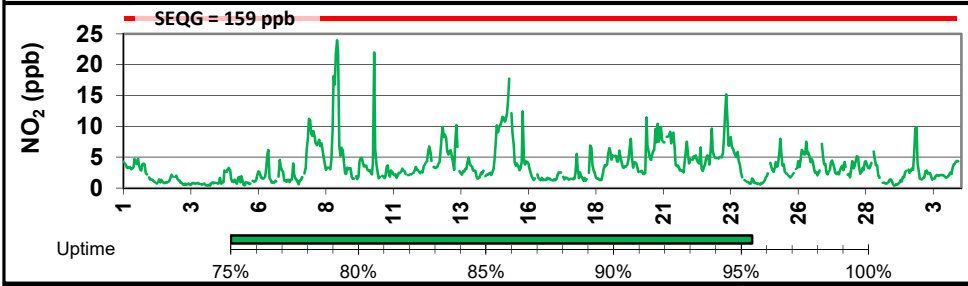
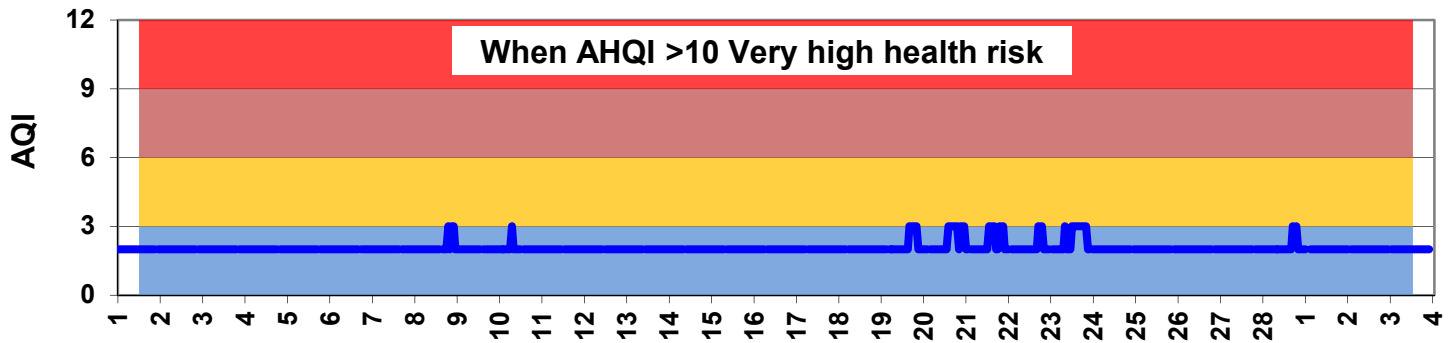
There were no exceedance in the month of February 2019, the maximum hydrogen sulphide occurred during south-eastern winds.

Instruments uptime remained >94%. Temperature related warnings were largely present during the colder temperatures. As well, the PM inlet heater malfunctioned for approximately two weeks following a power failure during the beginning on the month. This issue has been resolved

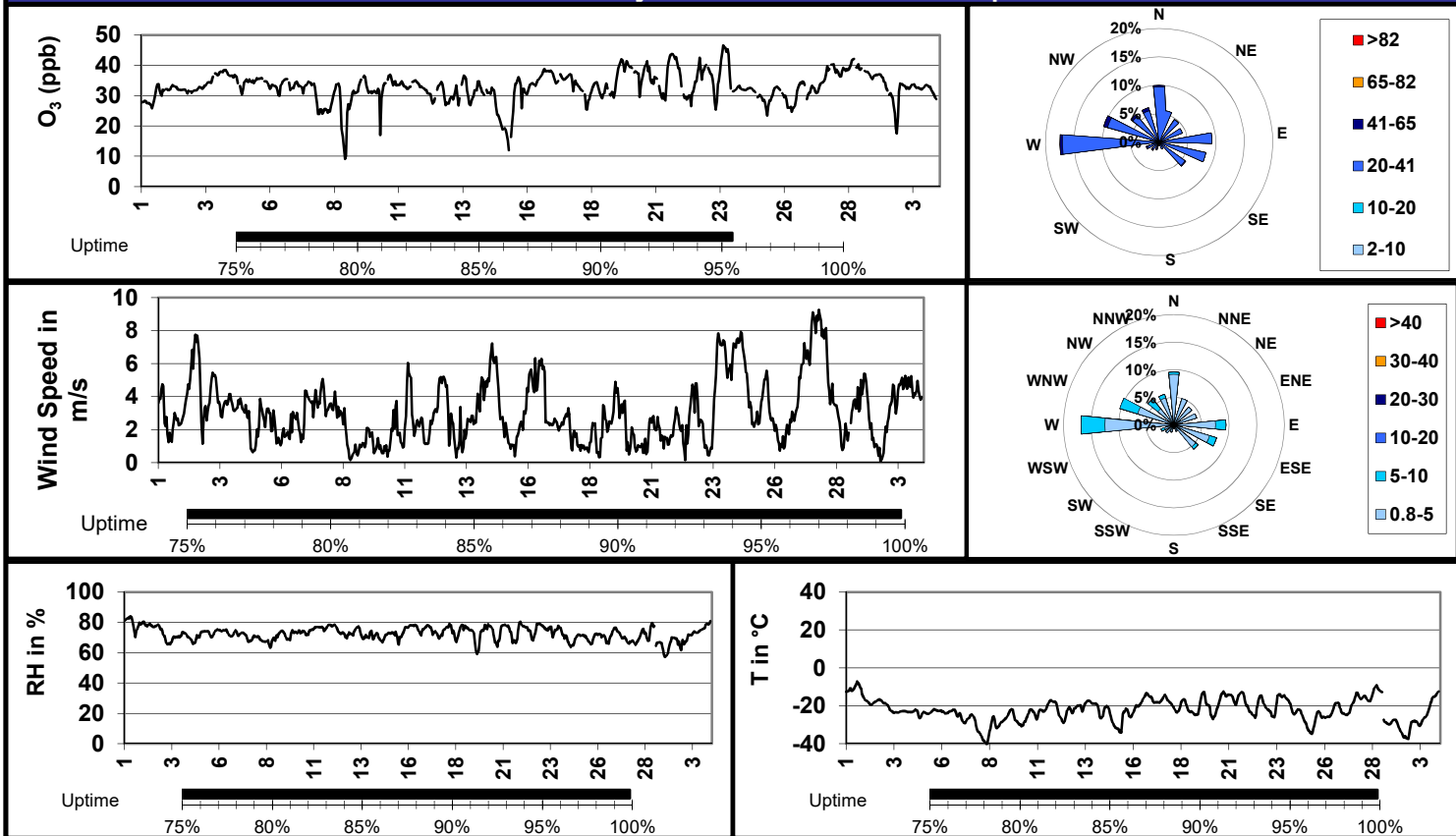
Data showed a low Air Quality Health Index for the month.

# SESAA - February 2019 Glen Ewen Station Report

Parm	Average	Uptime	1-hour			8-hour / 24-hour			Exceed 1hr / 24hr
			Max	Objective	Max Day and Time	Max	Objective	Max Day	
NO (ppb)	0.6	95.4%	10.3	-	Feb-06 09:00	1.6	-	Feb-08	- / -
NO <sub>2</sub> (ppb)	3.6	95.4%	24.0	159	Feb-08 22:00	8.9	106	Feb-08	0 / 0
NO <sub>x</sub> (ppb)	4.2	95.4%	25.1	-	Feb-10 07:00	10.5	-	Feb-08	- / -
SO <sub>2</sub> (ppb)	2.4	95.4%	57.4	172	Feb-26 12:00	8.3	-	Feb-28	0 / 0
H <sub>2</sub> S (ppb)	0.6	95.4%	3.3	11	Feb-18 04:00	1.2	3.6	Feb-18	0 / 0
O <sub>3</sub> (ppb)	32.8	95.4%	46.6	82	Feb-23 15:00	37.3	63	Feb-28	0 / 0
PM <sub>2.5</sub> (µg/m <sup>3</sup> )									



## SESAA - February 2019 Glen Ewen Station Report



### Elevated Reading Summary

Date	NO <sub>2</sub>	SO <sub>2</sub>	H <sub>2</sub> S	O <sub>3</sub>	PM <sub>2.5</sub>	WS	WD	Temp	RH
2/18/2019 4:00	1.4	1.5	3.3	31.5	-	1.1	348.7	-22.0	79.0

#### Update Summary:

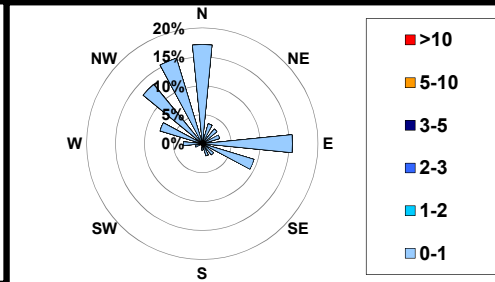
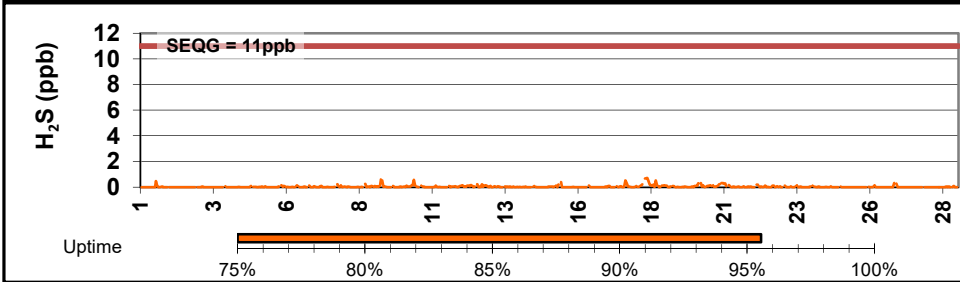
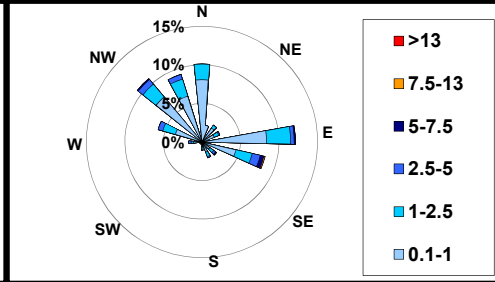
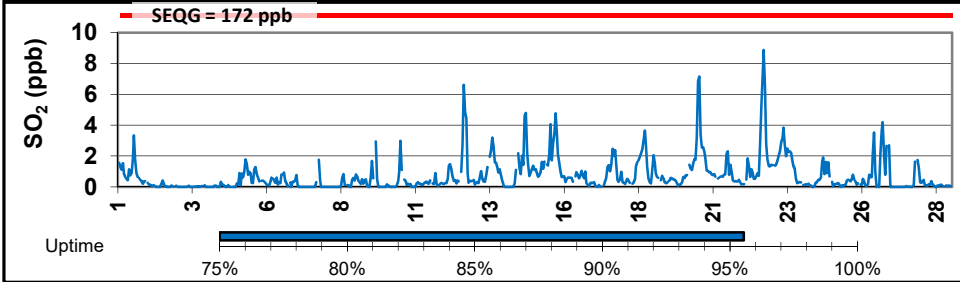
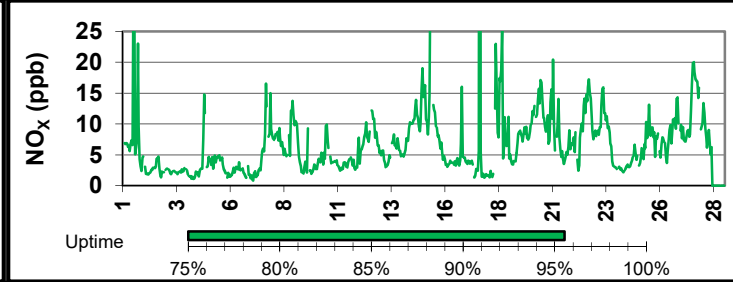
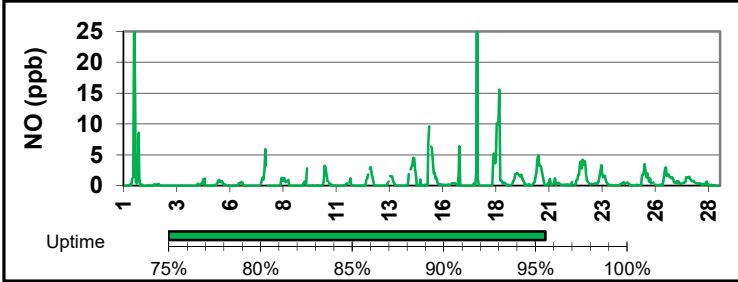
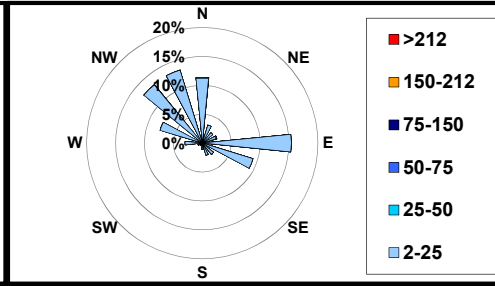
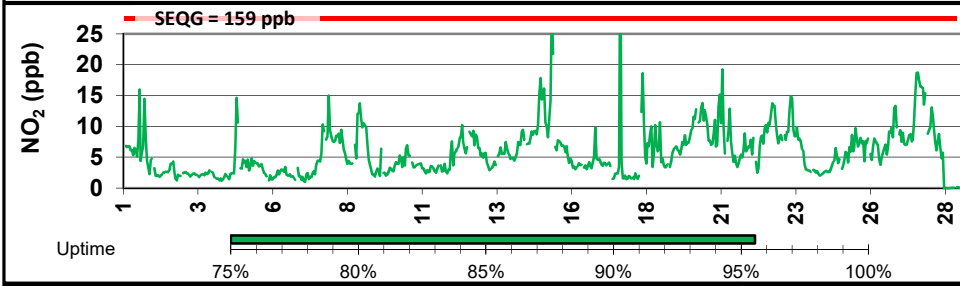
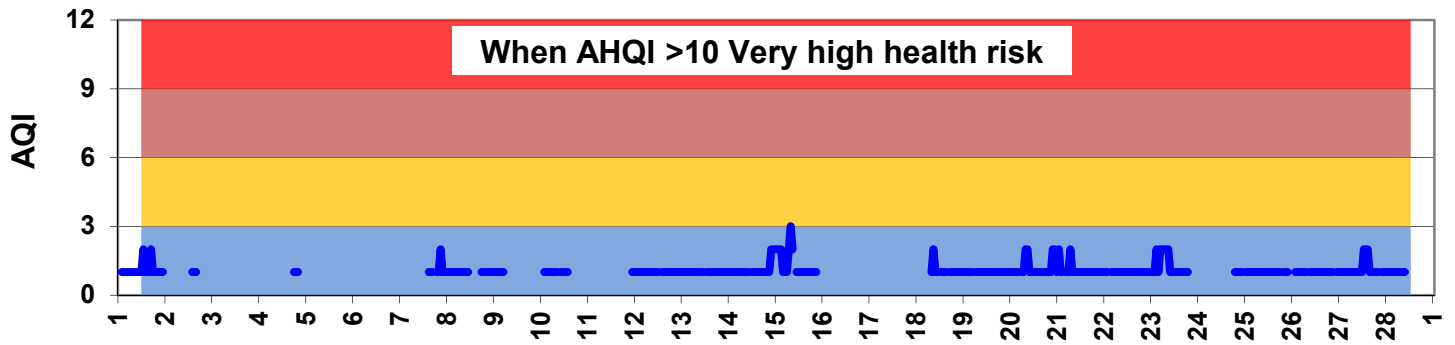
There were no exceedance s during the month of February 2019, the maximum hydrogen sulphide was during winds from the north-west.

Instrument uptimes were >95%.

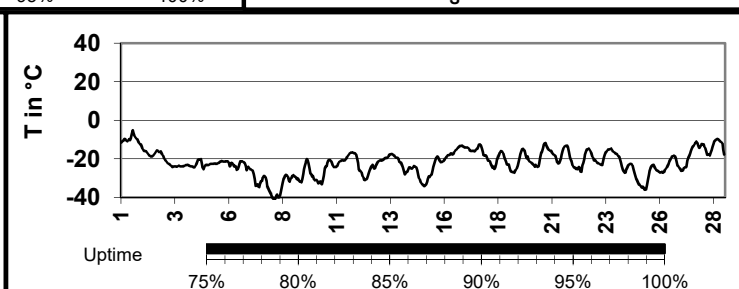
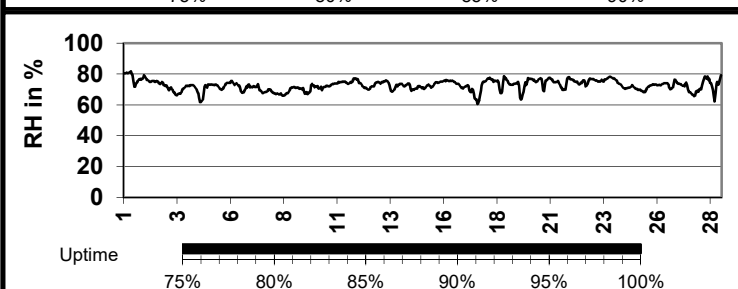
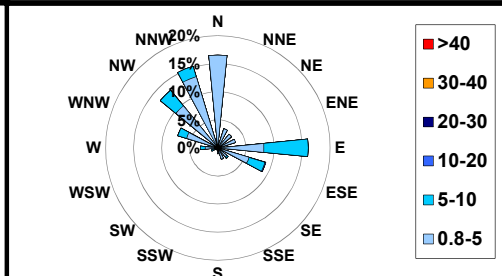
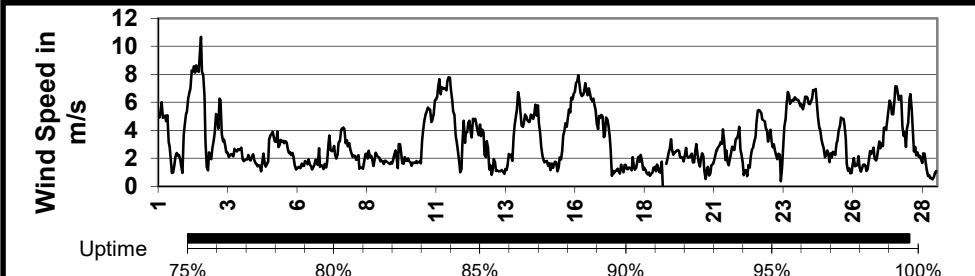
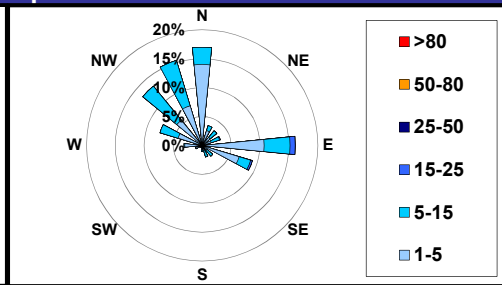
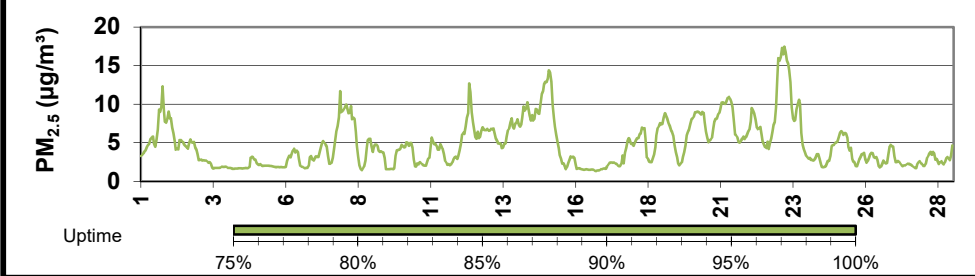
Data showed a low Air Quality Health Index (AQHI) for the month (in the absence of PM2.5)

# SESAA - February 2019 Stoughton Station Report

Parm	Average	Uptime	1-hour			8-hour / 24-hour			Exceed 1hr / 24hr
			Max	Objective	Max Day and Time	Max	Objective	Max Day	
NO (ppb)	0.9	95.5%	100.3	-	Feb-17 15:00	4.4	-	Feb-17	- / -
NO <sub>2</sub> (ppb)	5.8	95.5%	39.4	159	Feb-17 15:00	11.0	106	Feb-27	0 / 0
NO <sub>x</sub> (ppb)	6.7	95.5%	139.6	-	Feb-17 15:00	11.6	-	Feb-27	- / -
SO <sub>2</sub> (ppb)	0.7	95.5%	8.9	172	Feb-22 17:00	2.1	-	Feb-22	0 / 0
H <sub>2</sub> S (ppb)	0.0	95.5%	0.7	11	Feb-18 09:00	0.2	3.6	Feb-18	0 / 0
O <sub>3</sub> (ppb)									
PM <sub>2.5</sub> (µg/m <sup>3</sup> )	4.8	100.0%	17.5	-	Feb-23 05:00	11.2	30	Feb-23	- / 0



SESAA - February 2019 Stoughton Station Report



Elevated Reading Summary

Date	NO <sub>2</sub>	SO <sub>2</sub>	H <sub>2</sub> S	O <sub>3</sub>	PM <sub>2.5</sub>	WS	WD	Temp	RH
2/18/2019 9:00	18.6	0.5	0.7	-	6.9	2.2	50.5	-24.2	75.7

Update Summary:

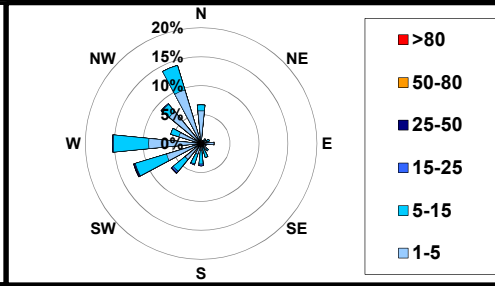
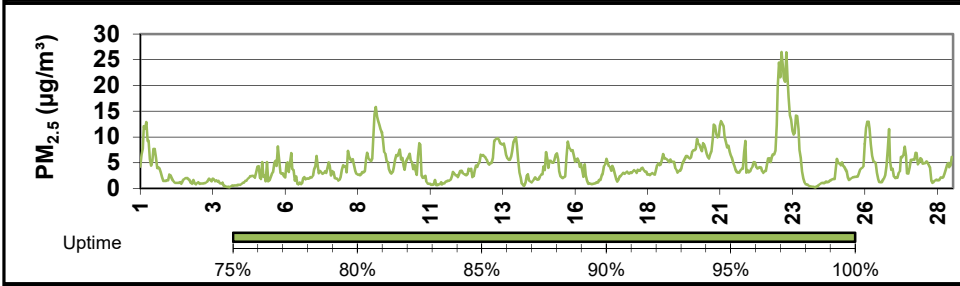
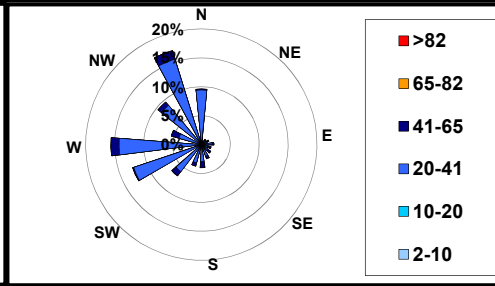
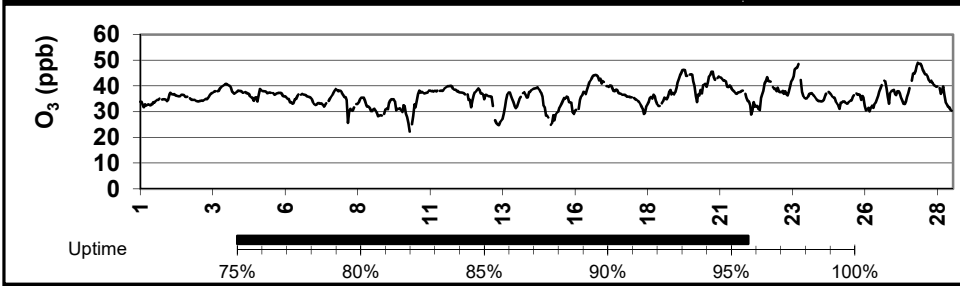
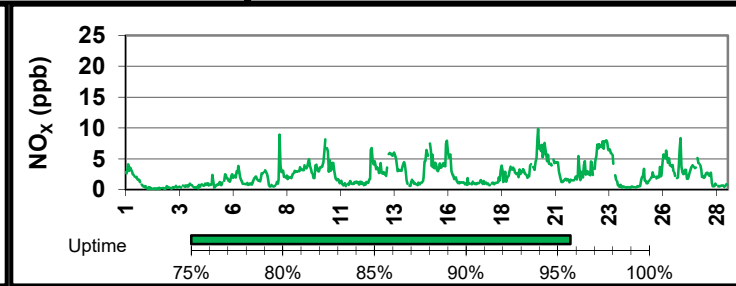
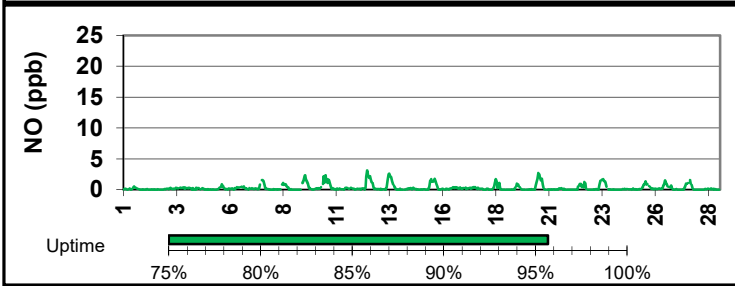
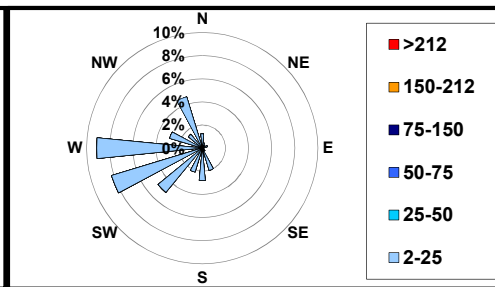
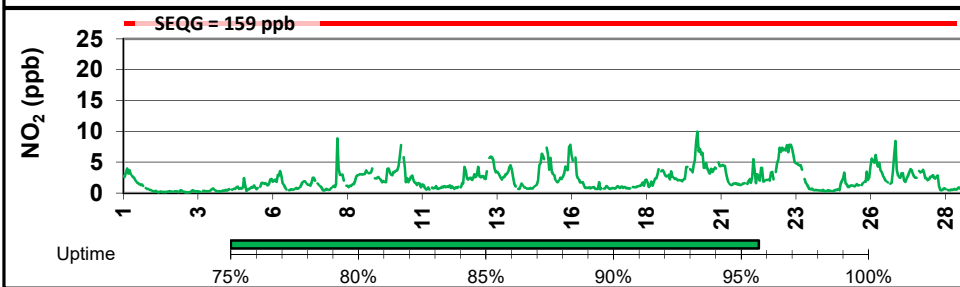
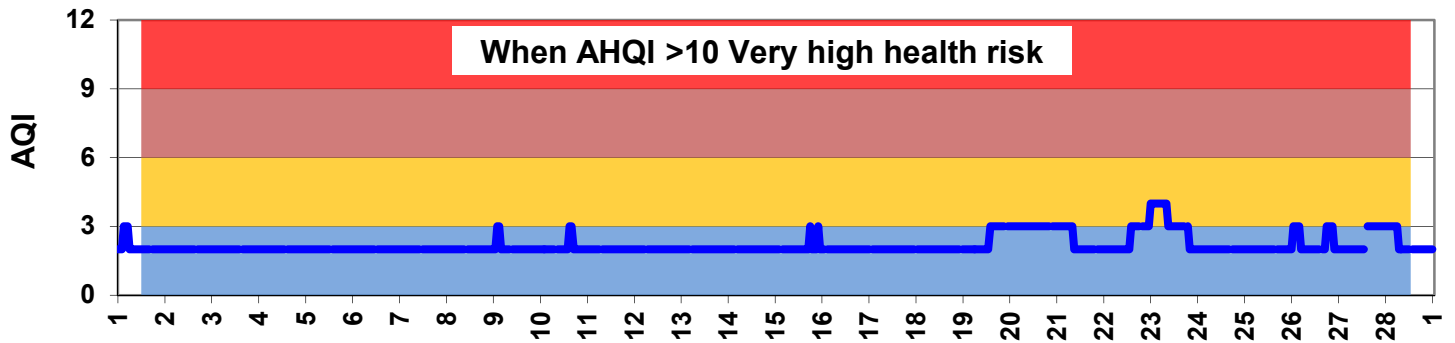
There were no exceedances in the month of February 2019

Instruments uptime remained >95%, the airpointer exhibited symptoms of a weakening pump near the end of the month.

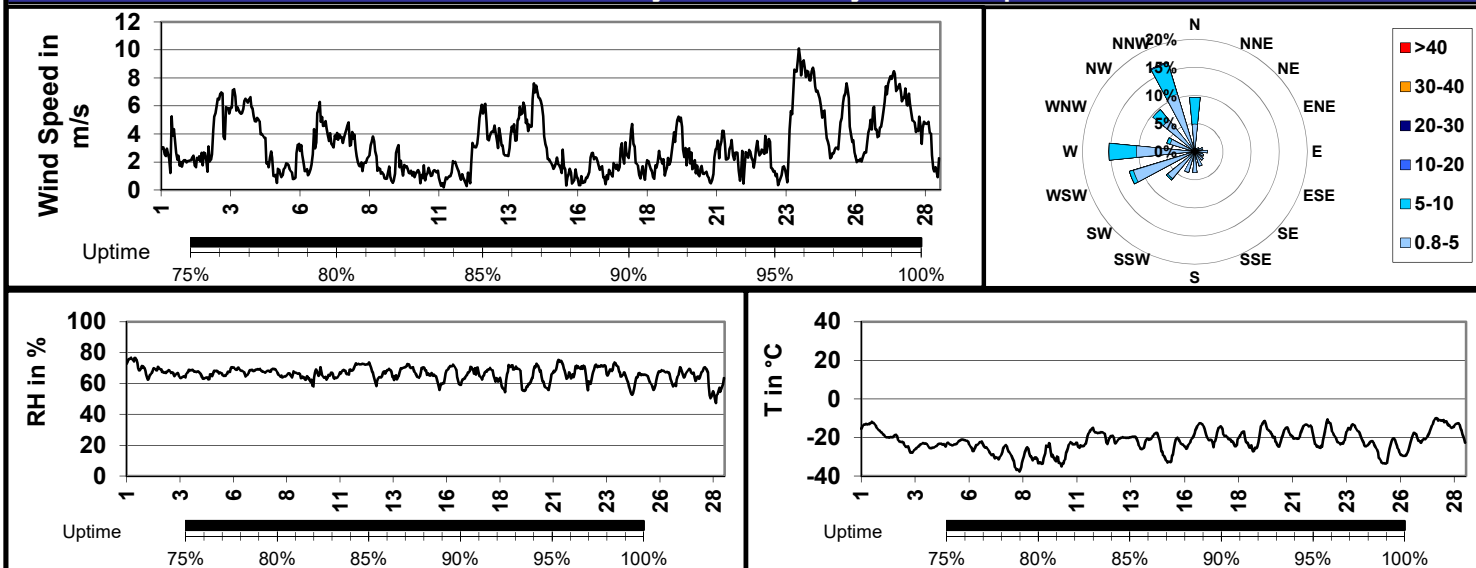
Data showed a low Air Quality Health Index (AQHI) for the month (in the absence of ozone)

## SESAA - February 2019 Esterhazy Station Report

Parm	Average	Uptime	1-hour			8-hour / 24-hour			Exceed 1hr / 24hr
			Max	Objective	Max Day and Time	Max	Objective	Max Day	
NO (ppb)	0.3	95.7%	3.2	-	Feb-12 11:00	0.8	-	Feb-12	- / -
NO <sub>2</sub> (ppb)	2.1	95.7%	9.9	159	Feb-20 05:00	4.9	106	Feb-23	0 / 0
NO <sub>x</sub> (ppb)	2.4	95.7%	9.9	-	Feb-20 05:00	5.4	-	Feb-20	- / -
SO <sub>2</sub> (ppb)									
H <sub>2</sub> S (ppb)									
O <sub>3</sub> (ppb)	36.2	95.7%	49.0	82	Feb-27 20:00	39.3	63	Feb-20	0 / 0
PM <sub>2.5</sub> (µg/m <sup>3</sup> )	4.4	100.0%	26.5	-	Feb-23 03:00	14.3	30	Feb-23	- / 0



## SESAA - February 2019 Esterhazy Station Report



### Elevated Reading Summary

Date	NO <sub>2</sub>	SO <sub>2</sub>	H <sub>2</sub> S	O <sub>3</sub>	PM <sub>2.5</sub>	WS	WD	Temp	RH
2/23/2018 3:00	7.1	-	-	37.5	26.5	1.0	249.3	-22.6	71.3

#### Update Summary:

**There were no exceedances for the month of February 2019;**

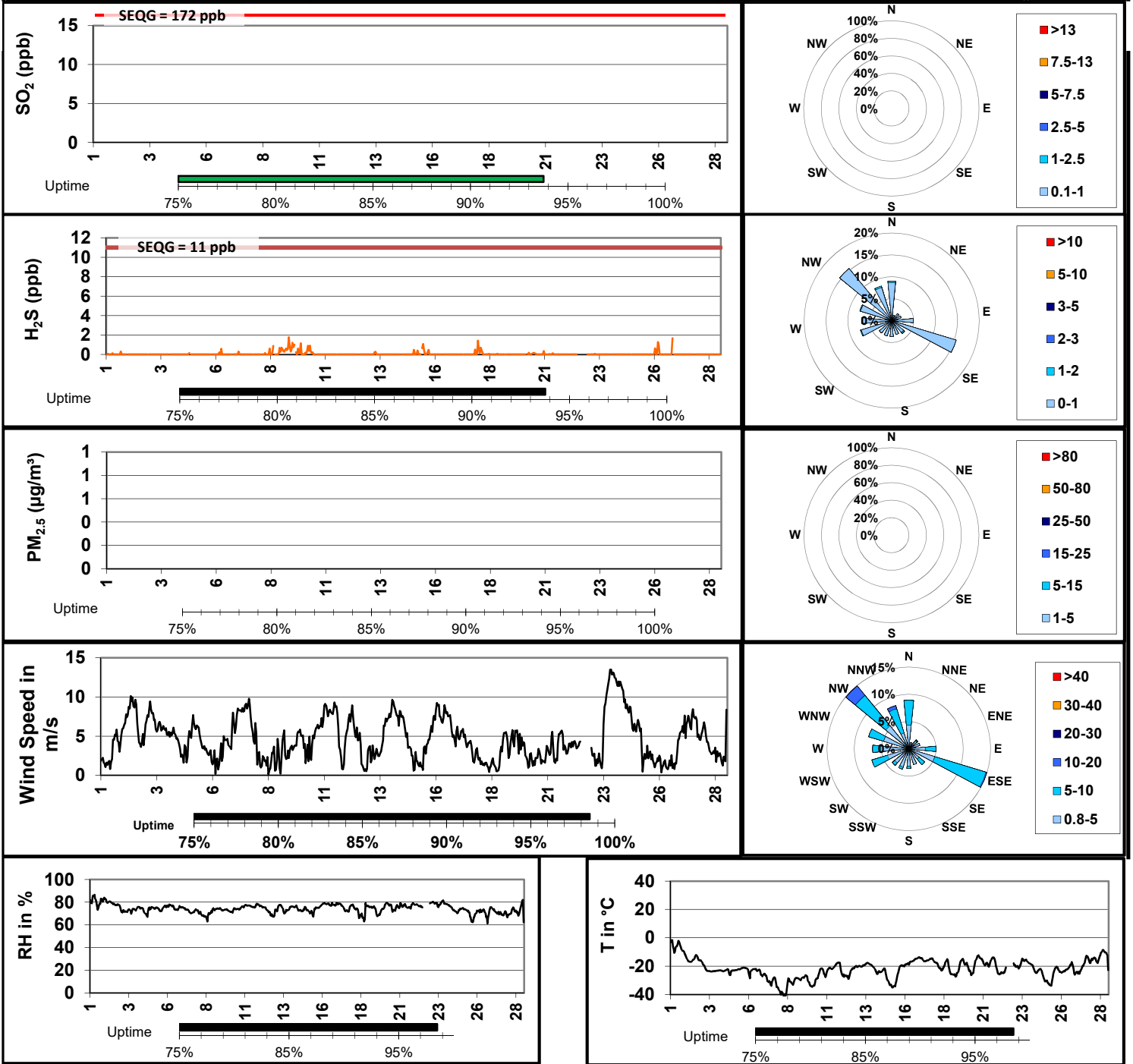
**All instruments remained at >95% uptime.**

**Data showed a low Air Quality Health Index (AQHI) for the month.**



## SESAA - February 2019 Torquay Station Report

Parm	1-hour					8-hour / 24-hour			Exceed 1hr / 24hr
	Average	Uptime	Max	Objective	Max Day and Time	Max	Objective	Max Day	
SO <sub>2</sub> (ppb)	#DIV/0!	0.0%	0.0	172	#N/A	0.0	48	Feb-01	0 / 0
H <sub>2</sub> S (ppb)	0.1	93.8%	1.8	11	Feb-09 08:00	0.5	4	Feb-09	0 / 0
PM <sub>2.5</sub> (µg/m <sup>3</sup> )									



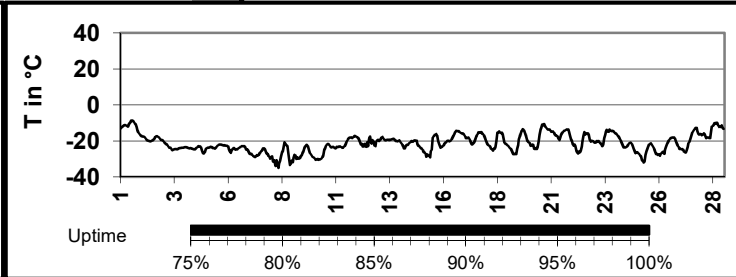
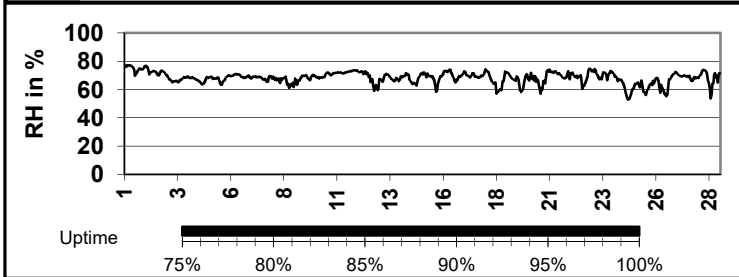
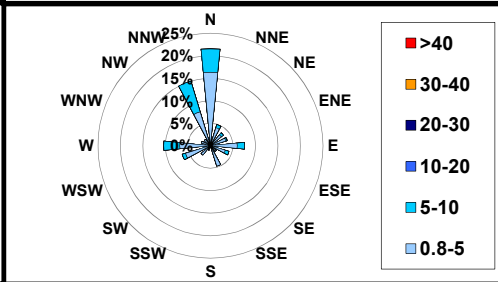
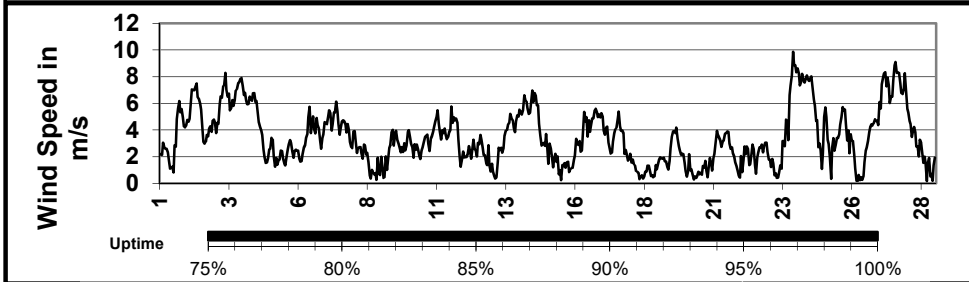
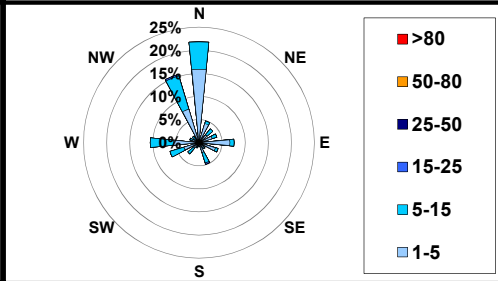
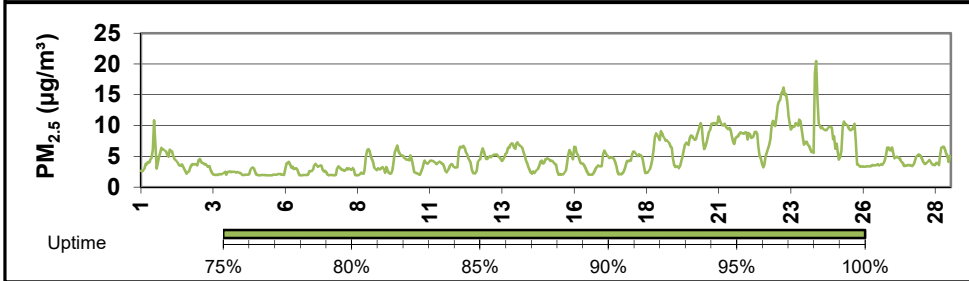
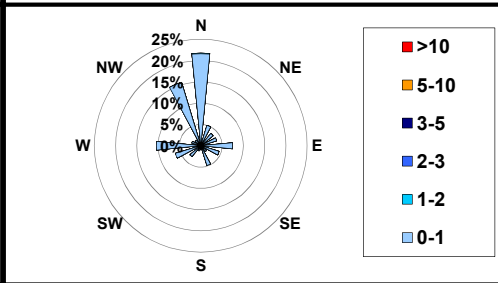
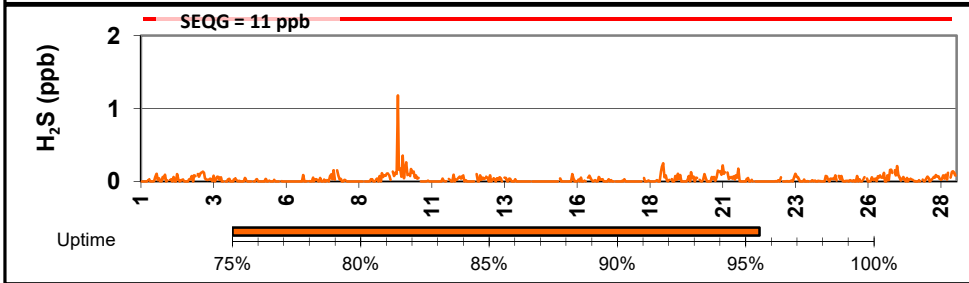
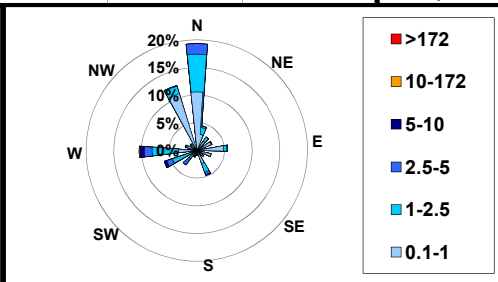
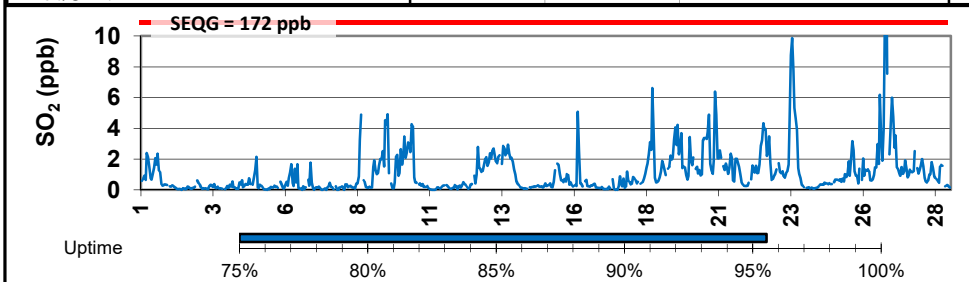
**Update Summary:**

There were no exceedance in the month of February 2019, the maximum hydrogen sulphide concentration was during winds from the south east.

Instrument uptime was >90% for H2S. The SO2 unit was removed the month prior, and was away for repairs during February.

## SESAA - February 2019 Wauchope Station Report

Parm	Average	Uptime	1-hour			8-hour / 24-hour			Exceed 1hr / 24hr
			Max	Objective	Max Day and Time	Max	Objective	Max Day	
SO <sub>2</sub> (ppb)	1.1	95.5%	18.6	172	Feb-26 19:00	3.2	-	Feb-26	0 / 0
H <sub>2</sub> S (ppb)	0.0	95.5%	1.2	11	Feb-09 20:00	0.1	3.6	Feb-09	0 / 0
PM <sub>2.5</sub> (µg/m <sup>3</sup> )	5.0	100.0%	20.5	-	Feb-24 09:00	11.7	30	Feb-23	- / 0



### Elevated Reading Summary

Date	NO <sub>2</sub>	SO <sub>2</sub>	H <sub>2</sub> S	O <sub>3</sub>	PM <sub>2.5</sub>	WS	WD	Temp	RH
2/24/2019 9:00	-	0.1	1.2	-	20.5	8.1	331.7	-23.6	66.7

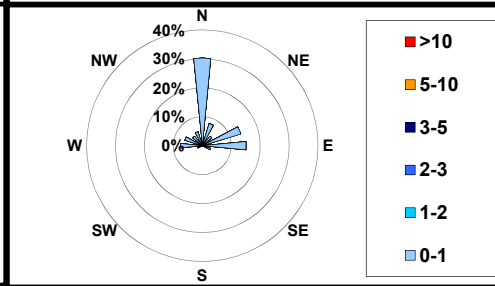
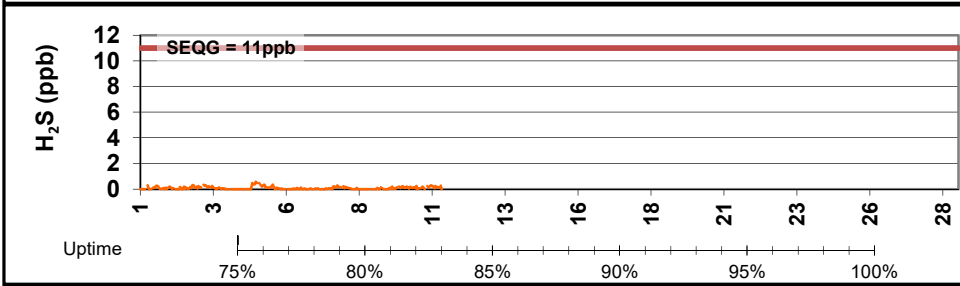
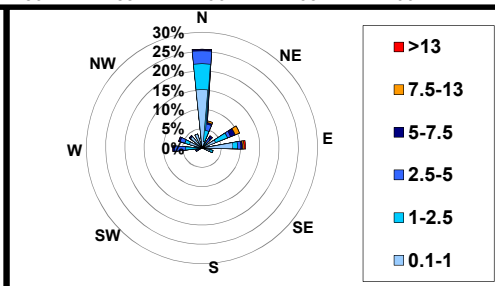
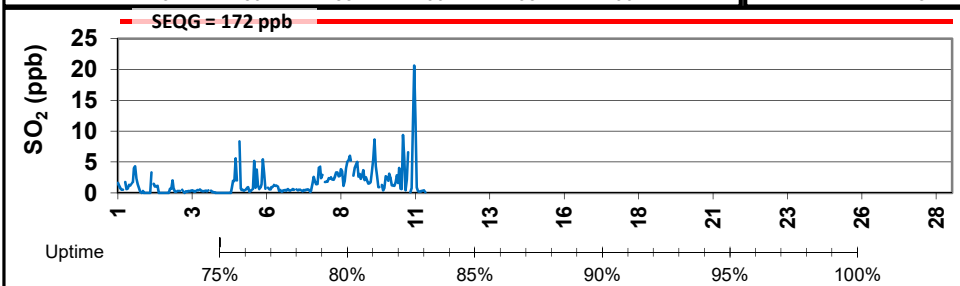
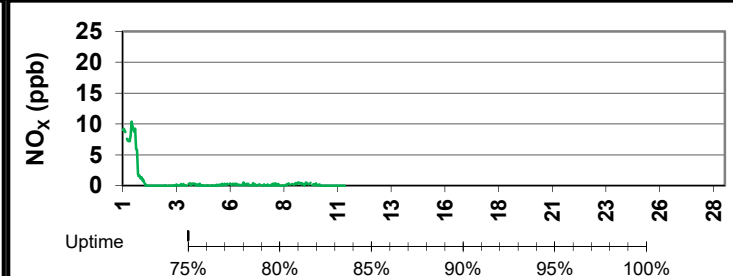
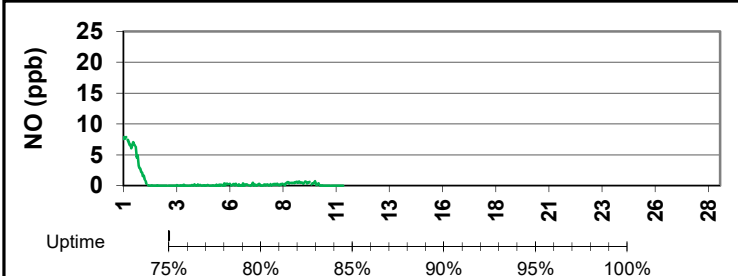
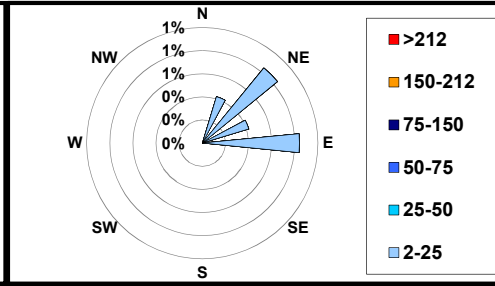
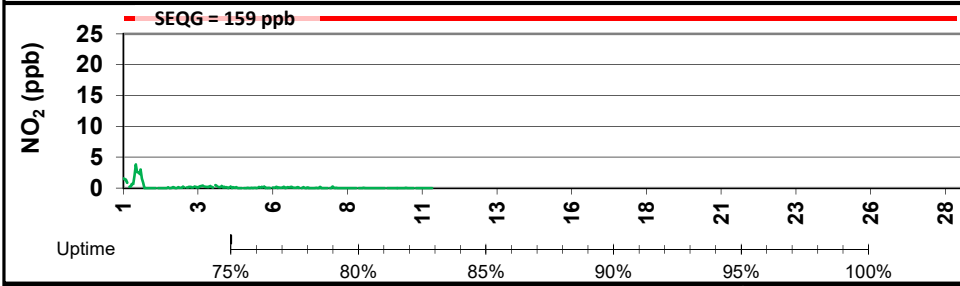
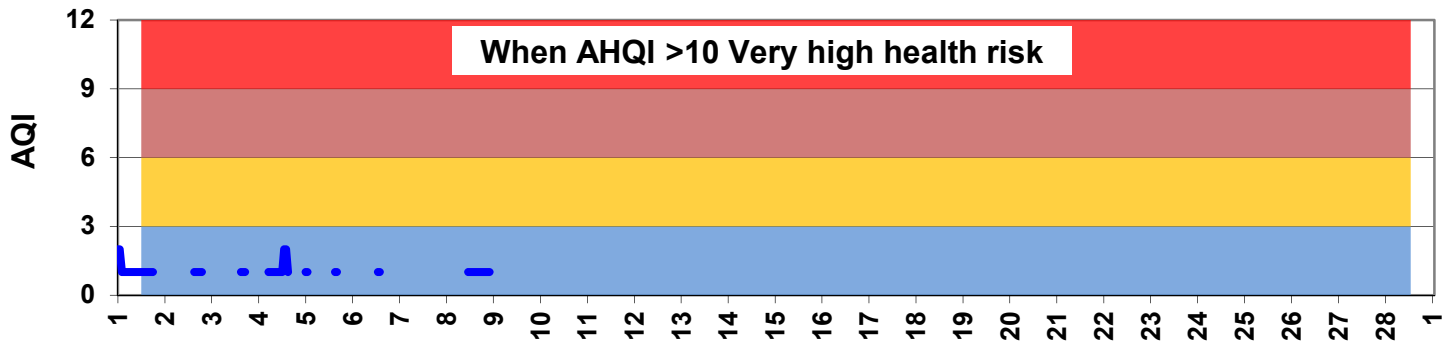
#### Update Summary:

There were no readings above the SEQG for the month of February 2019.

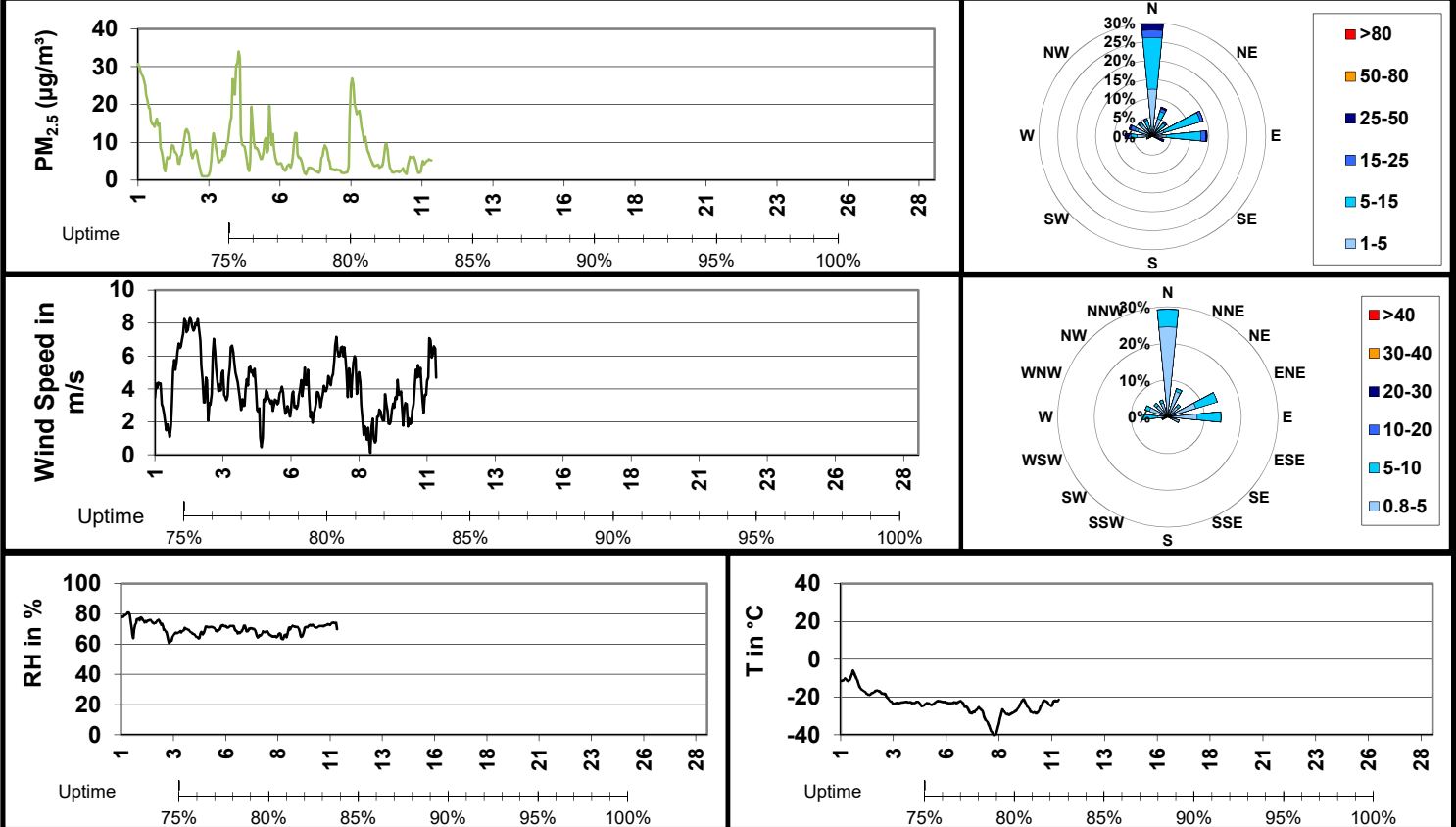
All instruments remained >95% uptime, the H<sub>2</sub>S unit exhibited flow warnings throughout the month. Likely the result of a dirty capillary.

# SESAA - February 2019 Oxbow Station Report

Parm	Average	Uptime	1-hour			8-hour / 24-hour			Exceed 1hr / 24hr
			Max	Objective	Max Day and Time	Max	Objective	Max Day	
NO (ppb)	0.7	35.4%	7.9	-	Feb-01 03:00	5.2	-	Feb-01	- / -
NO <sub>2</sub> (ppb)	0.2	35.4%	3.8	159	Feb-01 10:00	1.1	106	Feb-01	0 / 0
NO <sub>x</sub> (ppb)	0.7	35.4%	10.4	-	Feb-01 10:00	5.9	-	Feb-01	- / -
SO <sub>2</sub> (ppb)	1.6	35.4%	20.6	172	Feb-10 23:00	3.5	-	Feb-10	0 / 0
H <sub>2</sub> S (ppb)	0.1	35.4%	0.6	11	Feb-04 23:00	0.2	3.6	Feb-05	0 / 0
O <sub>3</sub> (ppb)									
PM <sub>2.5</sub> (µg/m <sup>3</sup> )	8.2	37.0%	34.0	-	Feb-04 13:00	17.8	30	Feb-01	- / 0



## SESAA - February 2019 Oxbow Station Report



### Elevated Reading Summary

Date	NO <sub>2</sub>	SO <sub>2</sub>	H <sub>2</sub> S	O <sub>3</sub>	PM <sub>2.5</sub>	WS	WD	Temp	RH
2/4/2019 23:00	0.0	5.6	0.6	-	4.9	1.0	38.5	-24.3	67.4

#### Update Summary:

There were no exceedance in the month of February 2019, the maximum hydrogen sulphide was during winds from the north east

Instruments uptime were 35% due to instrument failure. At the manufacturers suggestion, it has since been determined the likely cause is a malfunction in a circuit board within the computer.