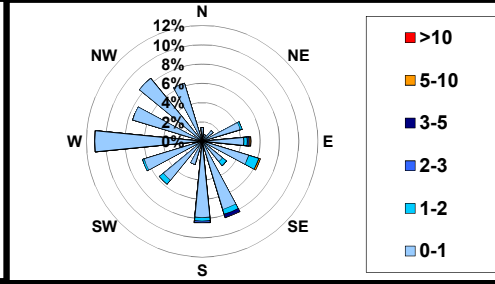
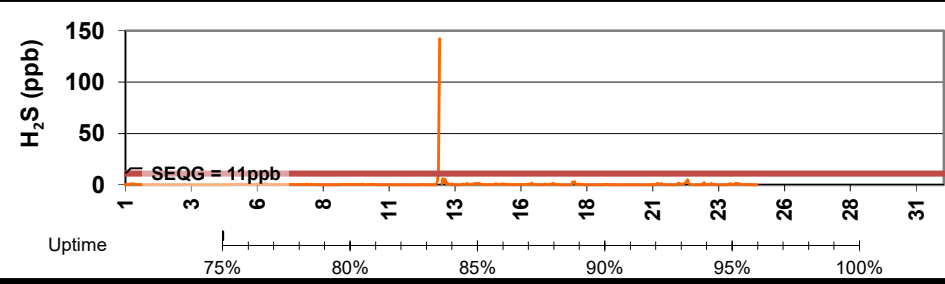
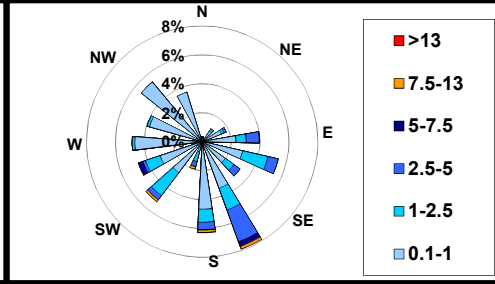
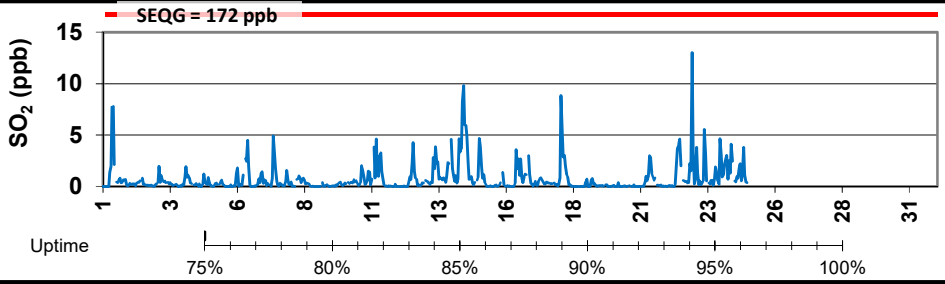
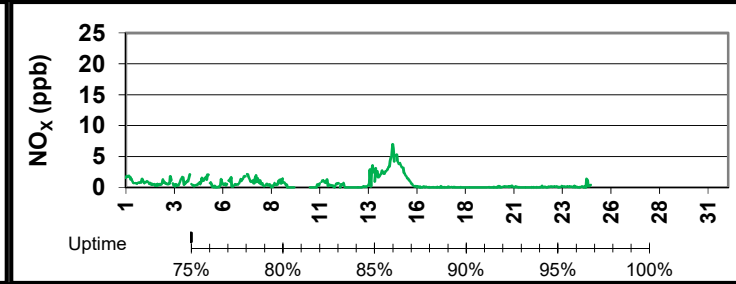
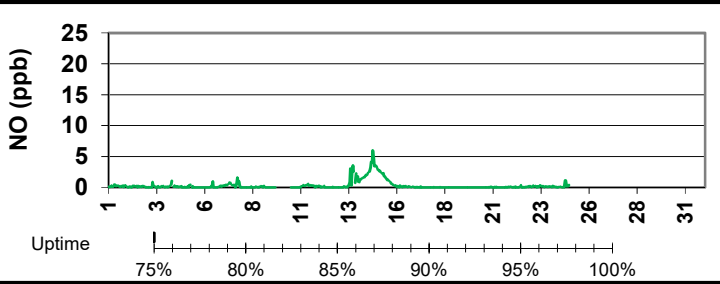
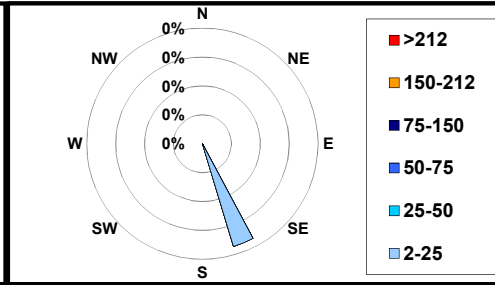
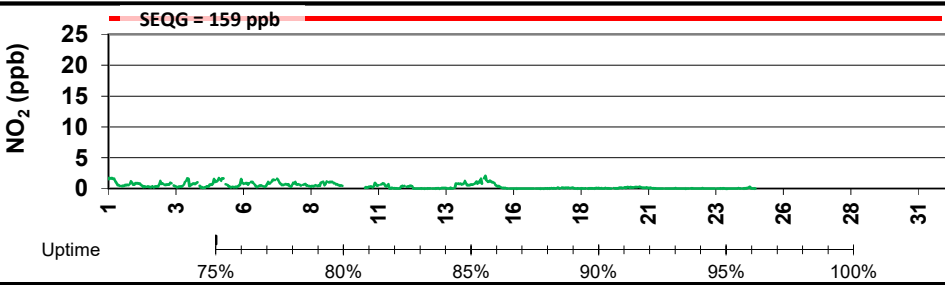
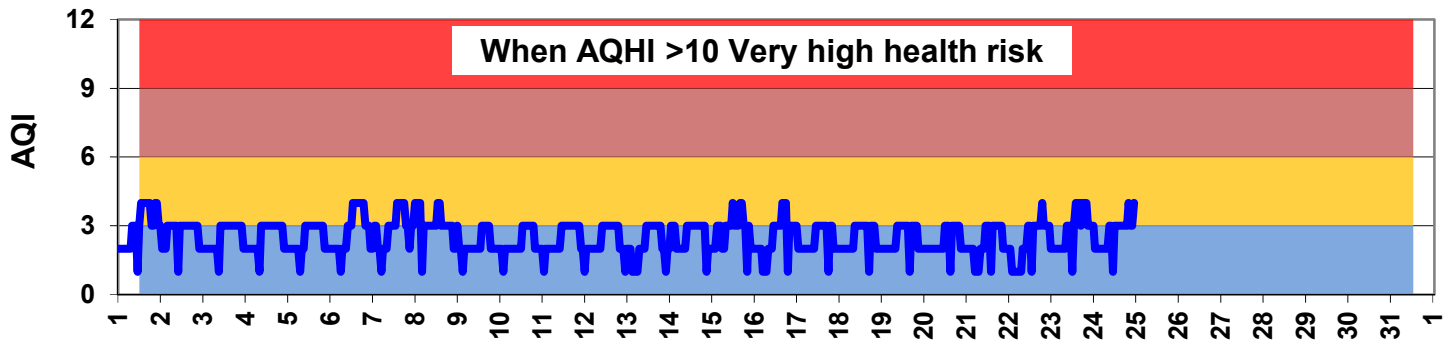
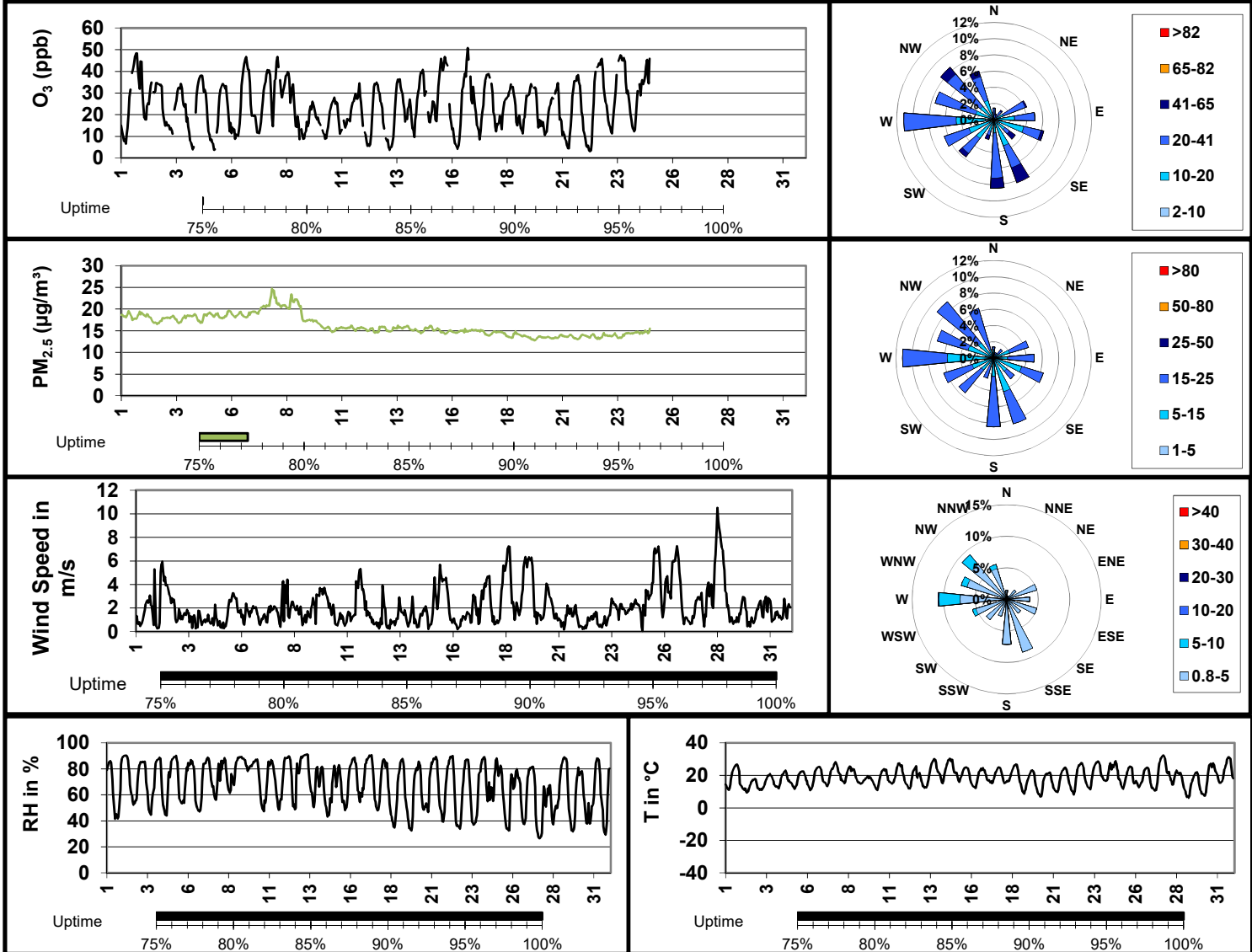


## SESAA - July 2019 Weyburn Station Report

Parm	Average	Uptime	1-hour			8-hour / 24-hour			Exceed 1hr / 24hr
			Max	Objective	Max Day and Time	Max	Objective	Max Day	
NO (ppb)	0.3	71.4%	6.0	-	Jul-14 18:00	2.4	-	Jul-14	- / -
NO <sub>2</sub> (ppb)	0.4	71.4%	2.1	159	Jul-14 23:00	0.9	106	Jul-14	0 / 0
NO <sub>x</sub> (ppb)	0.6	71.4%	7.0	-	Jul-14 18:00	3.3	-	Jul-14	- / -
SO <sub>2</sub> (ppb)	0.8	74.0%	13.0	172	Jul-22 22:00	2.5	-	Jul-14	0 / 0
H <sub>2</sub> S (ppb)	0.6	74.0%	142.1	11	Jul-12 22:00	6.6	3.6	Jul-12	2 / 1
O <sub>3</sub> (ppb)	24.3	74.0%	50.8	82	Jul-16 17:00	31.3	63	Jul-08	0 / 0
PM <sub>2.5</sub> (µg/m <sup>3</sup> )	16.2	77.3%	24.7	-	Jul-07 20:00	21.3	30	Jul-08	- / 0



## SESAA - July 2019 Weyburn Station Report



### Elevated Reading Summary

Date	NO <sub>2</sub>	SO <sub>2</sub>	H <sub>2</sub> S	O <sub>3</sub>	PM <sub>2.5</sub>	WS	WD	Temp	RH
7/12/2019 22:00	0.0	0.3	142.1	13.6	15.9	0.3	166.1	17.8	86.0

#### Update Summary:

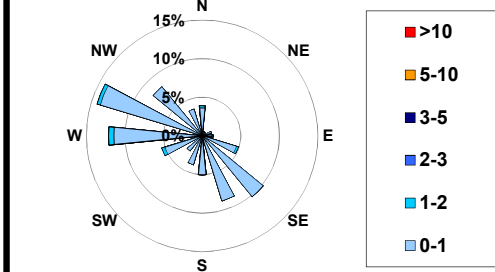
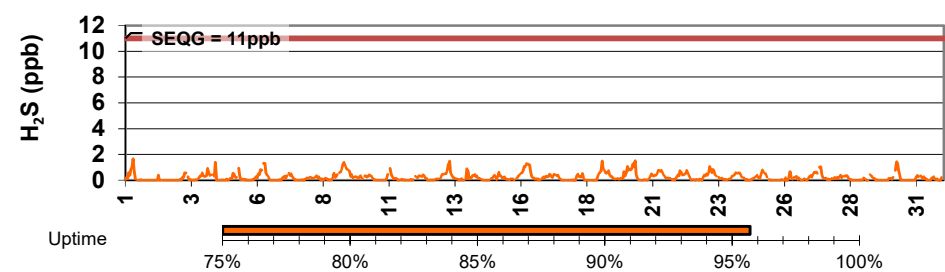
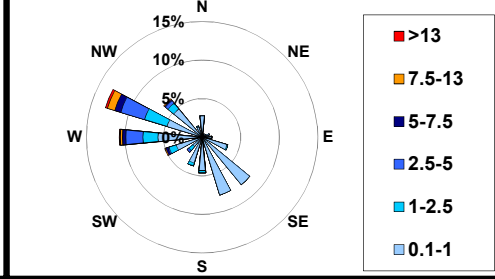
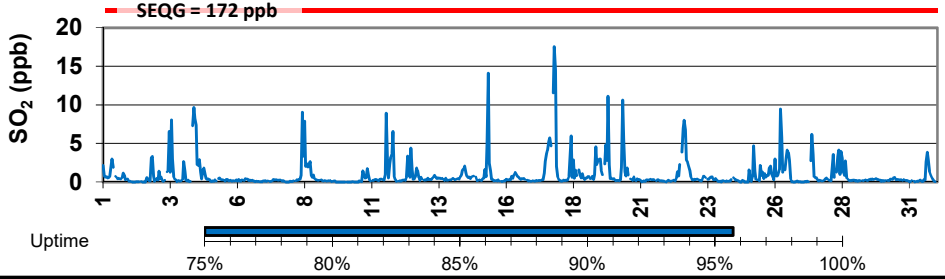
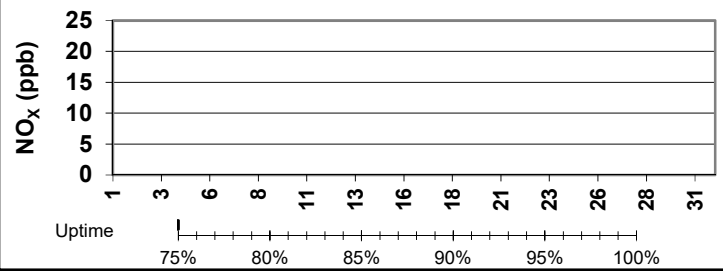
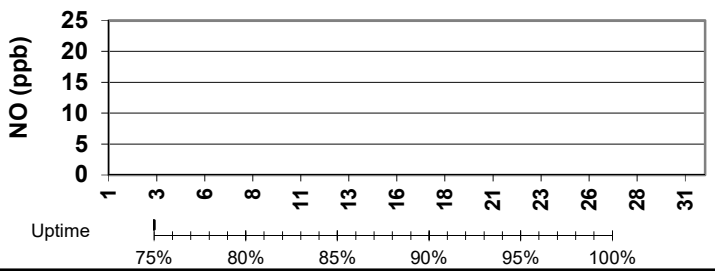
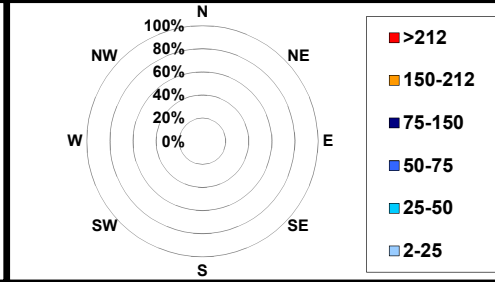
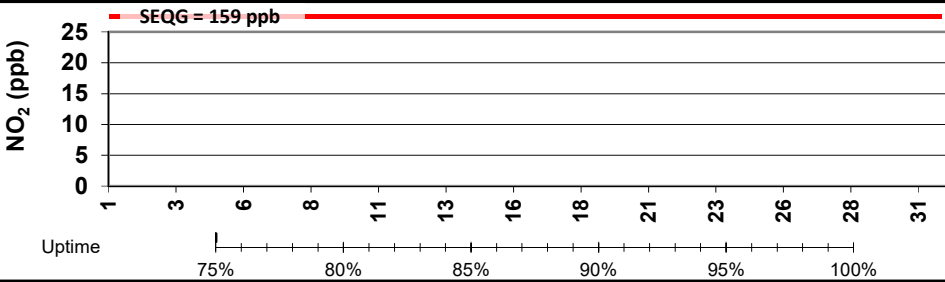
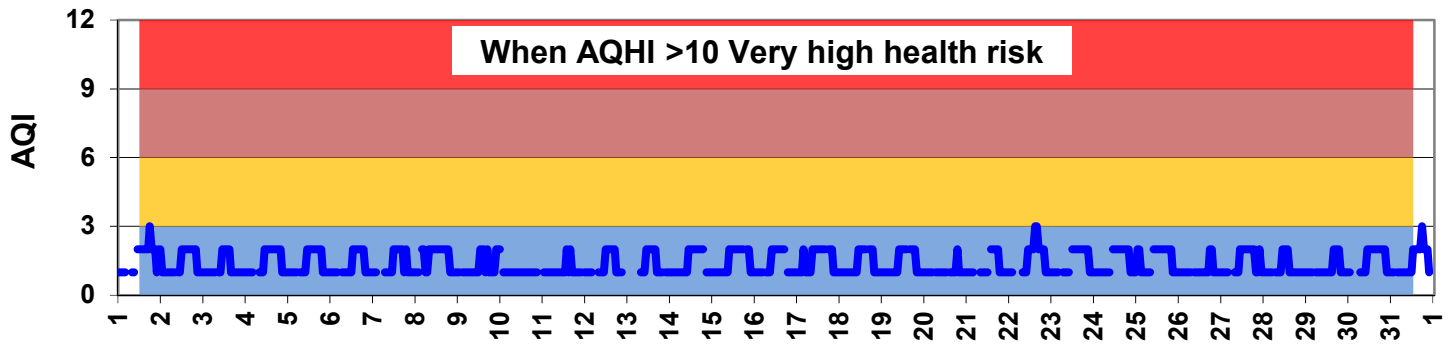
There were elevated readings of hydrogen sulphide that resulted in two readings above SEQGs in the month of July 2019, the elevated readings occurred on July 12, 2019, the maximum reading occurred just before an automatic span, as a result the extent of the maximum was not captured

The Station lost power due to a storm, which resulted in the computer having to be pulled and set back to manufacture for repair

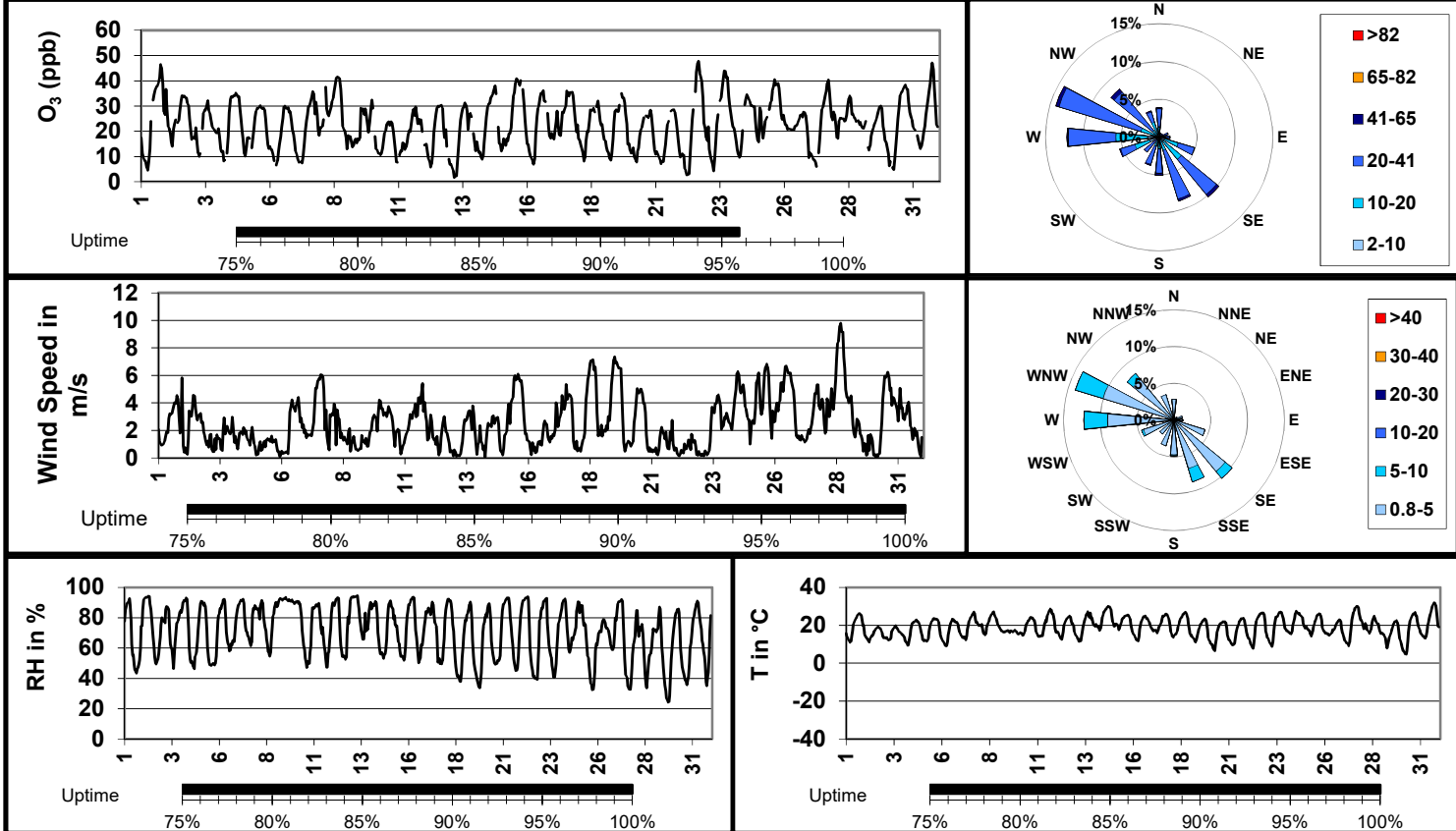
Data showed a low to moderate Air Quality Health Index for the month.

# SESAA - July 2019 Glen Ewen Station Report

Parm	Average	Uptime	1-hour			8-hour / 24-hour			Exceed 1hr / 24hr
			Max	Objective	Max Day and Time	Max	Objective	Max Day	
NO (ppb)	-	0.0%	0.0	-	#N/A	0.0	-	Jul-31	- / -
NO <sub>2</sub> (ppb)	-	0.0%	0.0	159	#N/A	0.0	106	Jul-31	0 / 0
NO <sub>x</sub> (ppb)	-	0.0%	0.0	-	#N/A	0.0	-	Jul-31	- / -
SO <sub>2</sub> (ppb)	0.9	95.7%	17.5	172	Jul-17 19:00	3.2	-	Jul-17	0 / 0
H <sub>2</sub> S (ppb)	0.2	95.7%	1.7	11	Jul-01 07:00	0.5	3.6	Jul-09	0 / 0
O <sub>3</sub> (ppb)	22.7	95.7%	47.7	82	Jul-22 16:00	29.1	63	Jul-08	0 / 0
PM <sub>2.5</sub> (µg/m <sup>3</sup> )									



## SESAA - July 2019 Glen Ewen Station Report



### Elevated Reading Summary

Date	NO <sub>2</sub>	SO <sub>2</sub>	H <sub>2</sub> S	O <sub>3</sub>	PM <sub>2.5</sub>	WS	WD	Temp	RH
7/1/2019 7:00	0.0	2.1	1.7	7.7	-	1.6	244.7	13.9	88.5

**Update Summary:**

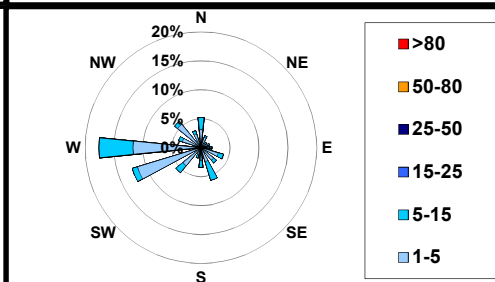
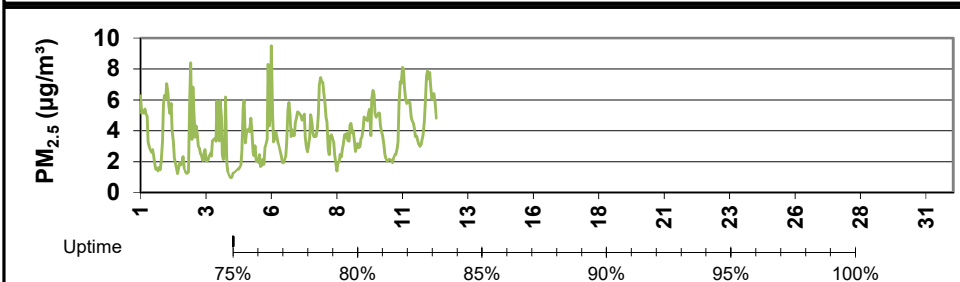
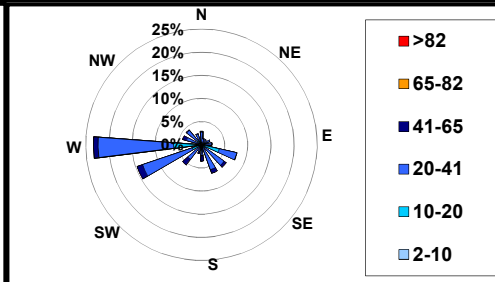
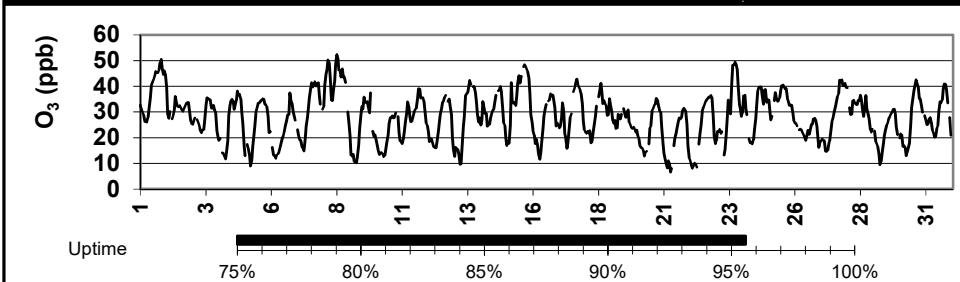
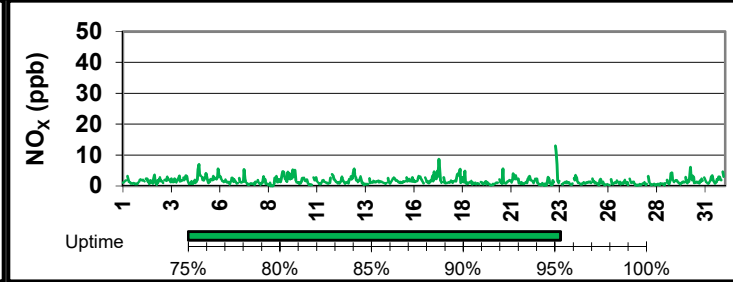
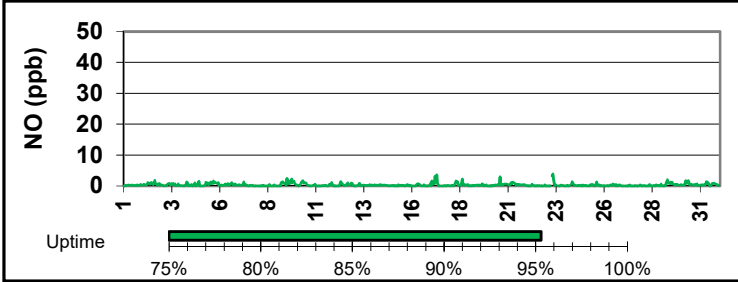
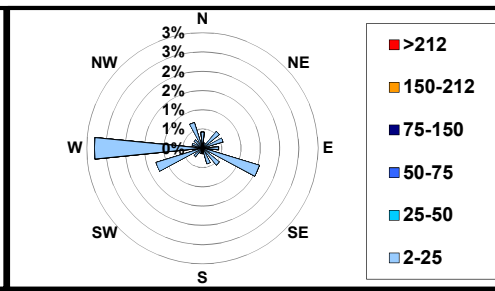
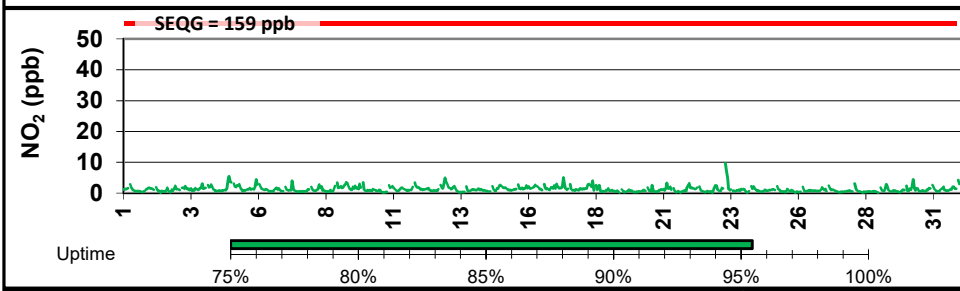
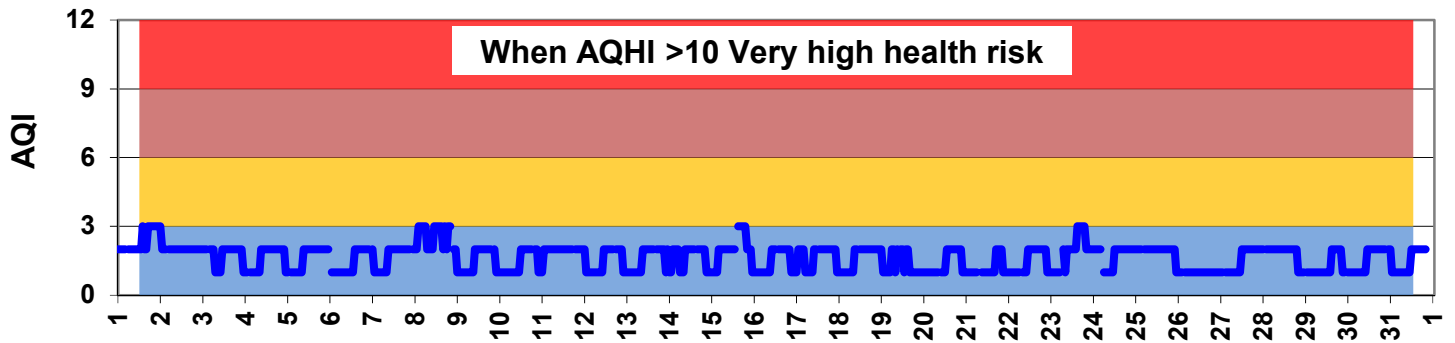
There were no exceedance during the month of July 2019

The nitrogen dioxide (NO/NO<sub>x</sub>) analyzer was removed and sent to manufacture for repair  
 All other instrument uptimes were >95%

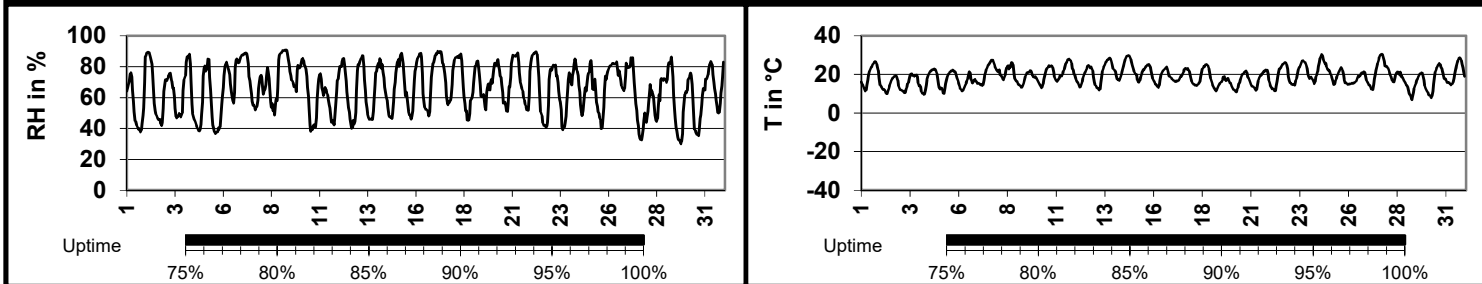
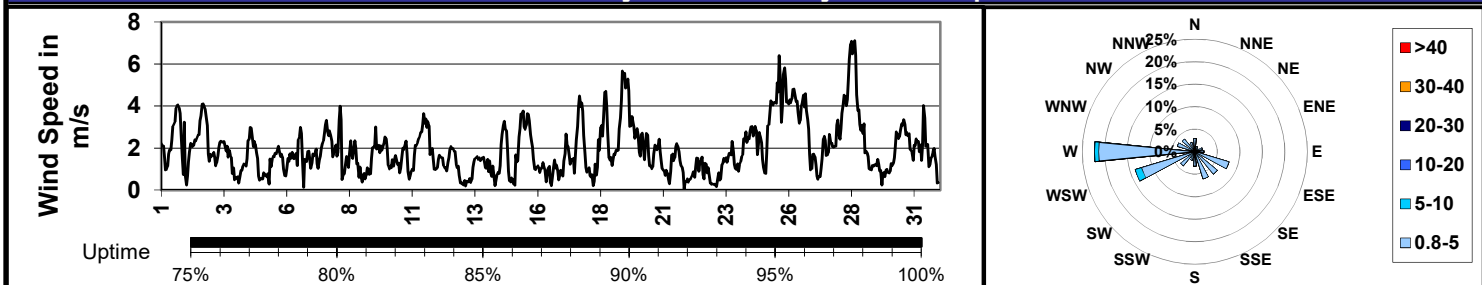
Data showed a low Air Quality Health Index (AQHI) for the month (in the absence of PM<sub>2.5</sub>)

## SESAA - July 2019 Esterhazy Station Report

Parm	Average	Uptime	1-hour			8-hour / 24-hour			Exceed 1hr / 24hr
			Max	Objective	Max Day and Time	Max	Objective	Max Day	
NO (ppb)	0.4	95.3%	3.9	-	Jul-23 08:00	0.9	-	Jul-09	- / -
NO <sub>2</sub> (ppb)	1.3	95.4%	9.7	159	Jul-23 07:00	1.9	106	Jul-09	0 / 0
NO <sub>x</sub> (ppb)	1.6	95.3%	13.0	-	Jul-23 07:00	2.7	-	Jul-09	- / -
O <sub>3</sub> (ppb)	28.2	95.6%	52.3	82	Jul-08 12:00	40.6	63	Jul-08	0 / 0
PM <sub>2.5</sub> (µg/m <sup>3</sup> )	3.8	36.5%	9.5	-	Jul-06 00:00	5.1	30	Jul-11	- / 0



## SESAA - July 2019 Esterhazy Station Report



### Elevated Reading Summary

Date	NO <sub>2</sub>	SO <sub>2</sub>	H <sub>2</sub> S	O <sub>3</sub>	PM <sub>2.5</sub>	WS	WD	Temp	RH
7/6/2018 0:00	0.0	-	-	0.0	9.5	1.0	77.4	15.2	66.5

**Update Summary:**

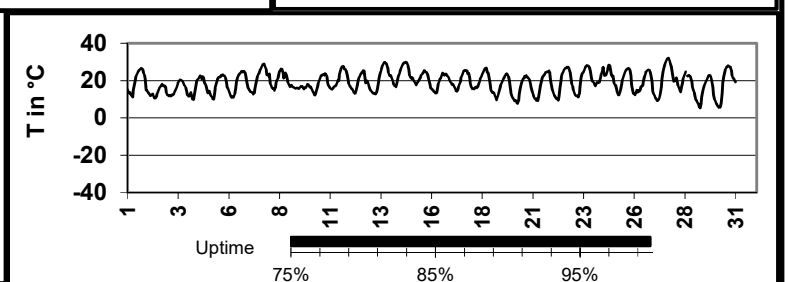
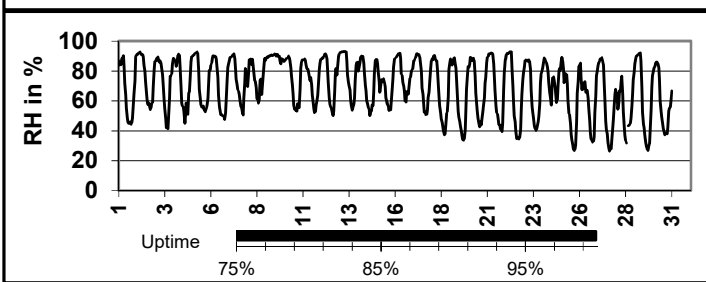
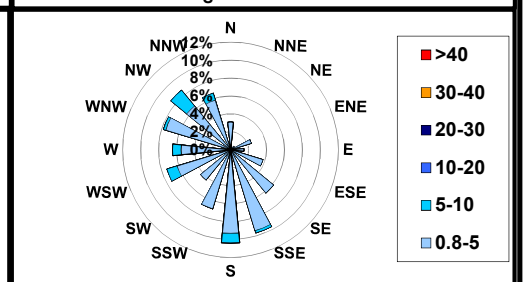
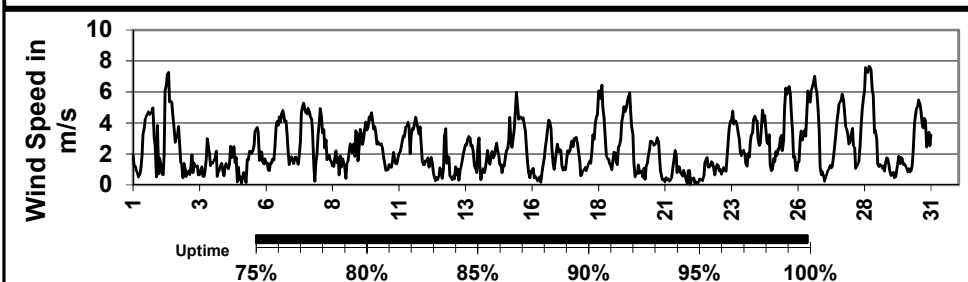
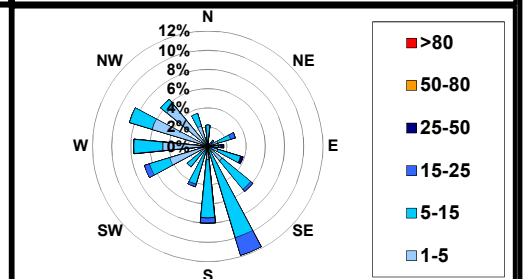
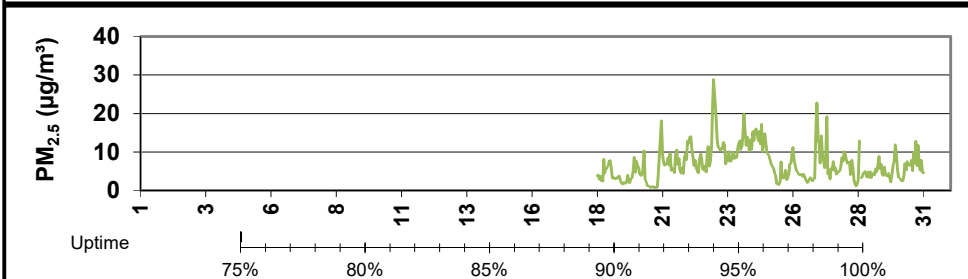
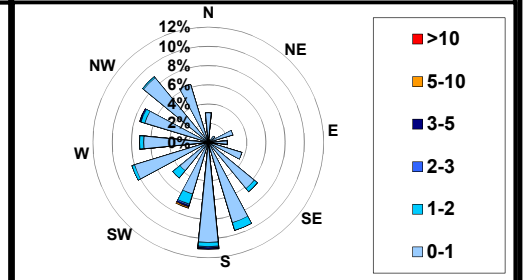
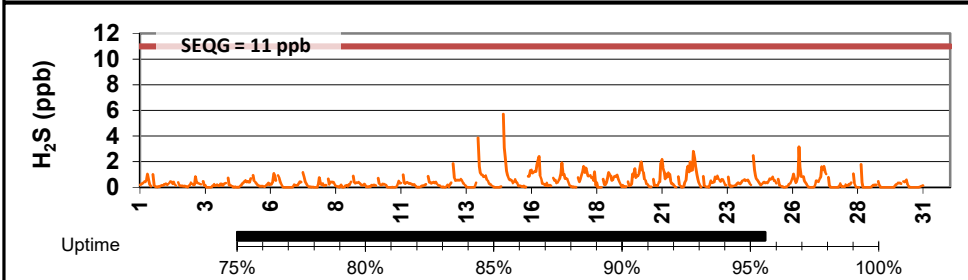
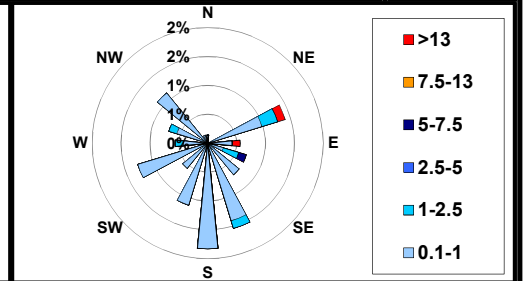
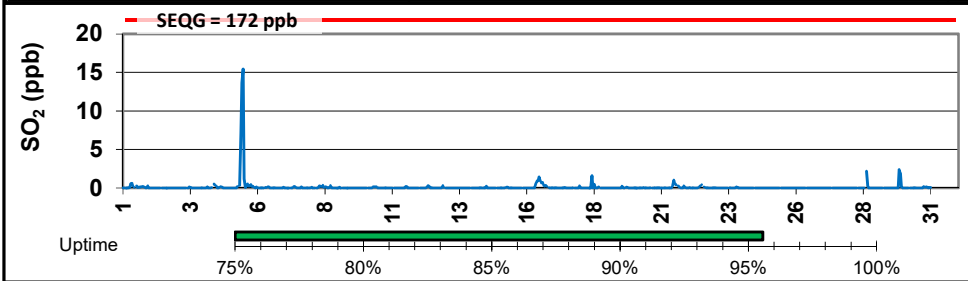
There were no exceedances for the month of July 2019;

All instruments remained at >95% uptime with exception of PM<sub>2.5</sub> (<40%) as a result of the SHARP unit showing fluctuating concentrations unit was shut down for further investigation and repair

Data showed low Air Quality Health Index (AQHI) for the month.

## SESAA - July 2019 Torquay Station Report

Parm	Average	Uptime	1-hour			8-hour / 24-hour			Exceed 1hr / 24hr
			Max	Objective	Max Day and Time	Max	Objective	Max Day	
SO <sub>2</sub> (ppb)	0.1	95.6%	15.5	172	Jul-05 11:00	1.7	48	Jul-05	0 / 0
H <sub>2</sub> S (ppb)	0.4	95.6%	5.7	11	Jul-14 22:00	0.8	4	Jul-22	0 / 0
PM <sub>2.5</sub> (µg/m <sup>3</sup> )	7.0	41.6%	28.8	-	PM2.5	13.6	30	Jul-24	- / 0



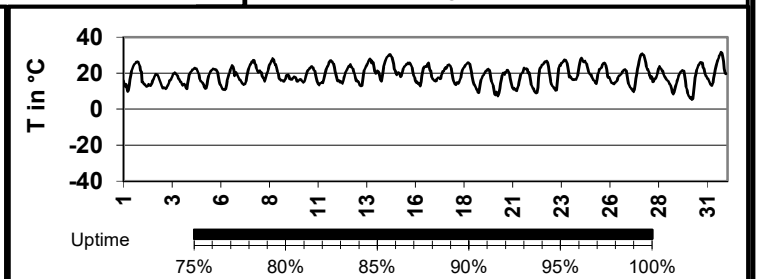
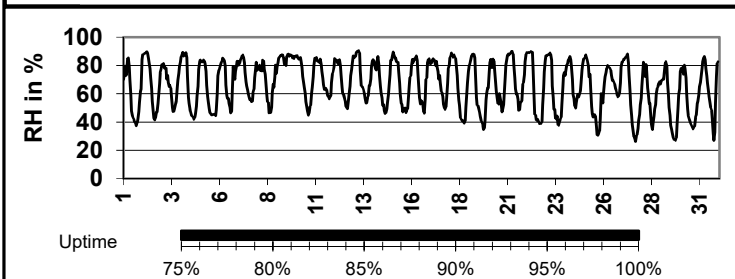
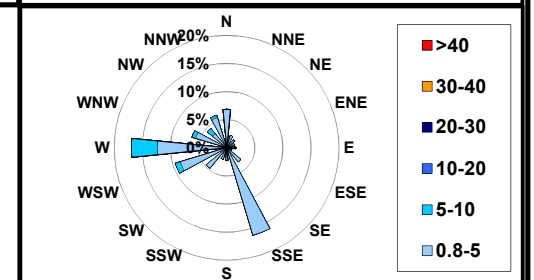
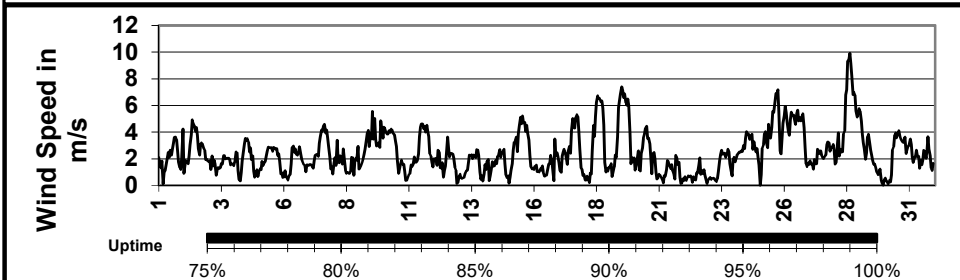
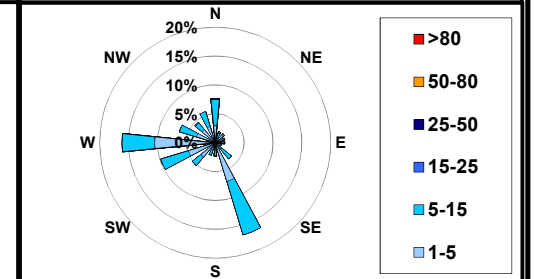
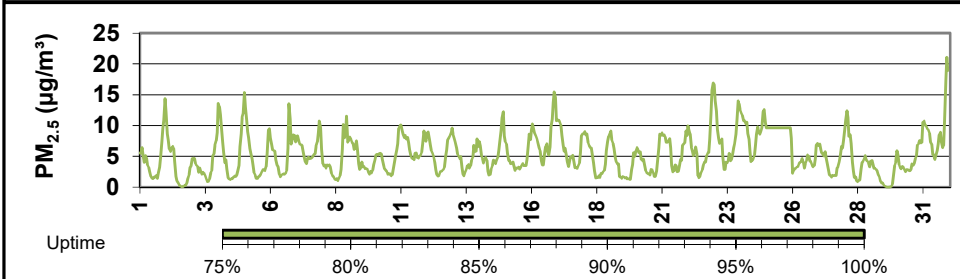
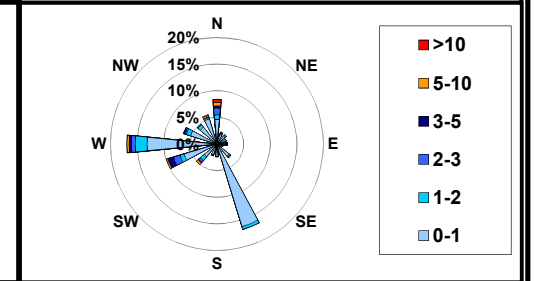
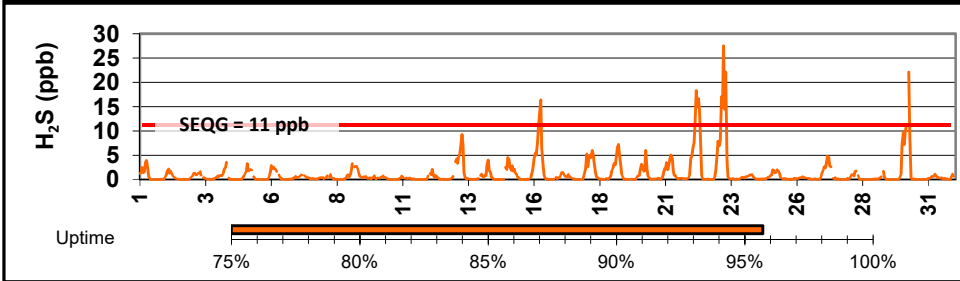
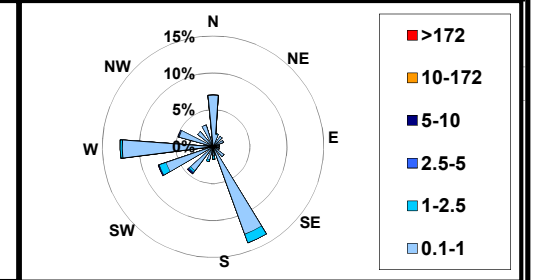
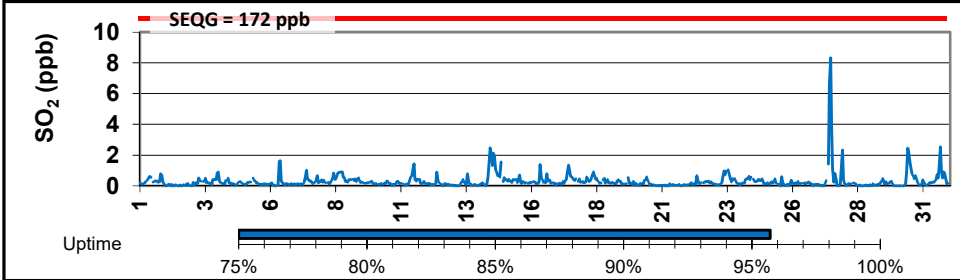
### Update Summary:

There was no exceedance in the month of July 2019  
 The SHARP PM<sub>2.5</sub> was brought back online July 18, 2019

Instrument uptime was >95% except for PM<sub>2.5</sub> which came back online July 18, 2019

## SESAA - July 2019 Wauchope Station Report

Parm	Average	Uptime	1-hour			8-hour / 24-hour			Exceed 1hr / 24hr
			Max	Objective	Max Day and Time	Max	Objective	Max Day	
SO <sub>2</sub> (ppb)	0.3	95.7%	8.3	172	Jul-27 11:00	1.2	-	Jul-27	0 / 0
H <sub>2</sub> S (ppb)	1.2	95.7%	27.5	11	Jul-23 05:00	5.2	3.6	Jul-23	15 / 2
PM <sub>2.5</sub> (µg/m <sup>3</sup> )	5.4	100.0%	21.1	-	Jul-31 22:00	9.6	30	Jul-25	- / 0



### Elevated Reading Summary

Date	NO <sub>2</sub>	SO <sub>2</sub>	H <sub>2</sub> S	O <sub>3</sub>	PM <sub>2.5</sub>	WS	WD	Temp	RH
7/31/2019 22:00	-	0.1	27.5	-	21.1	1.1	28.3	19.9	81.4

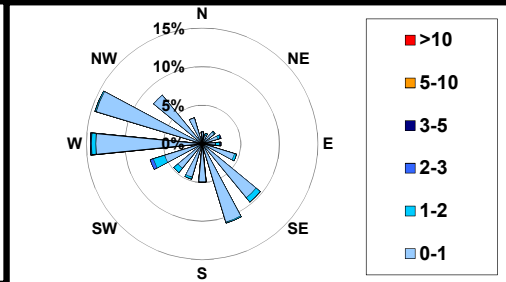
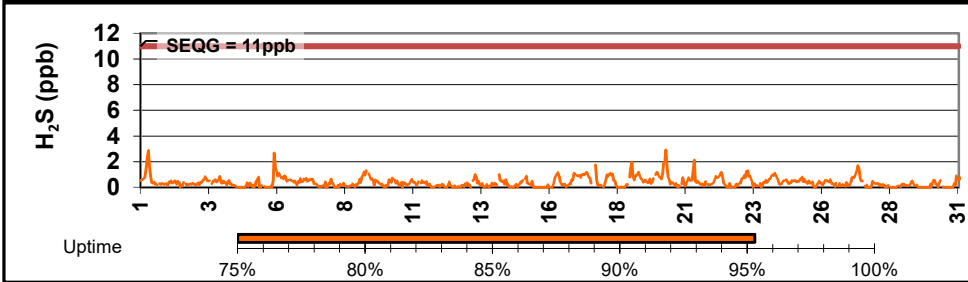
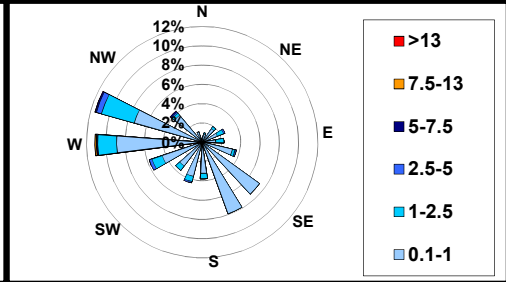
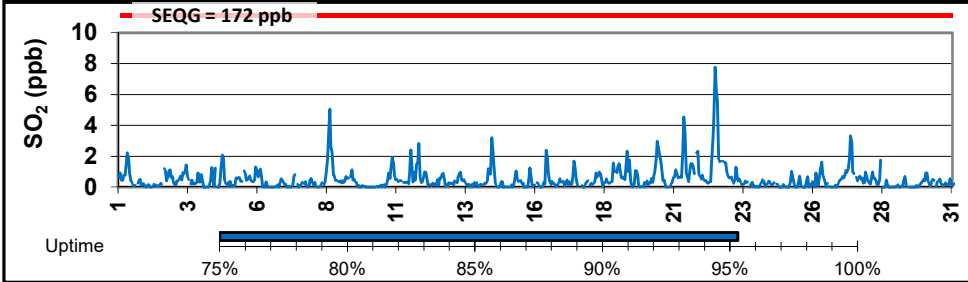
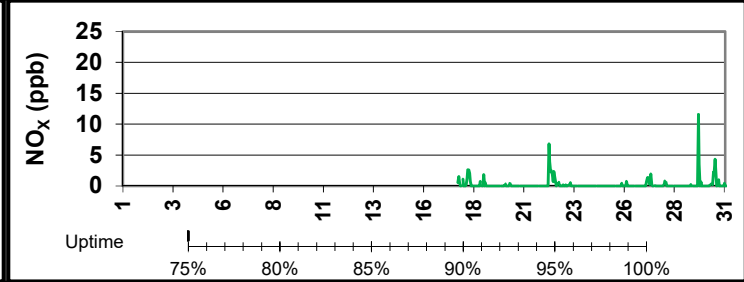
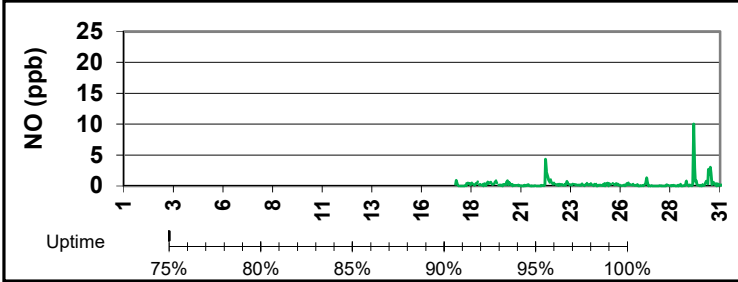
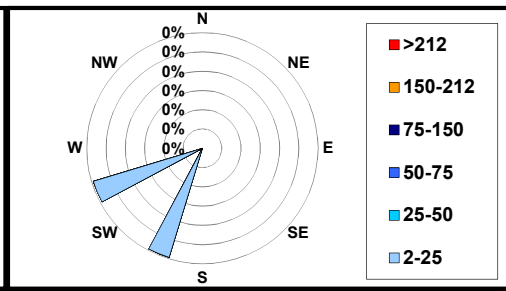
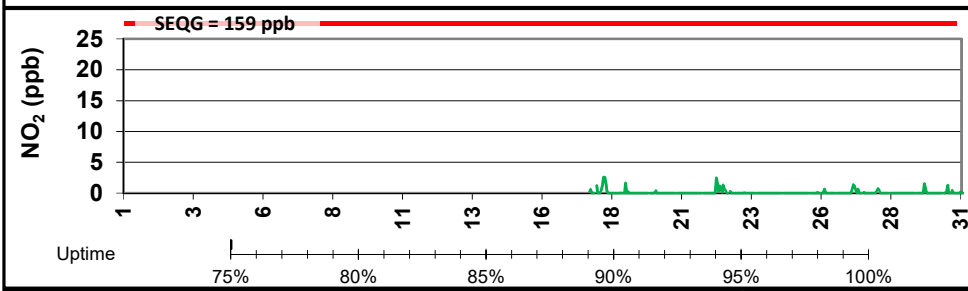
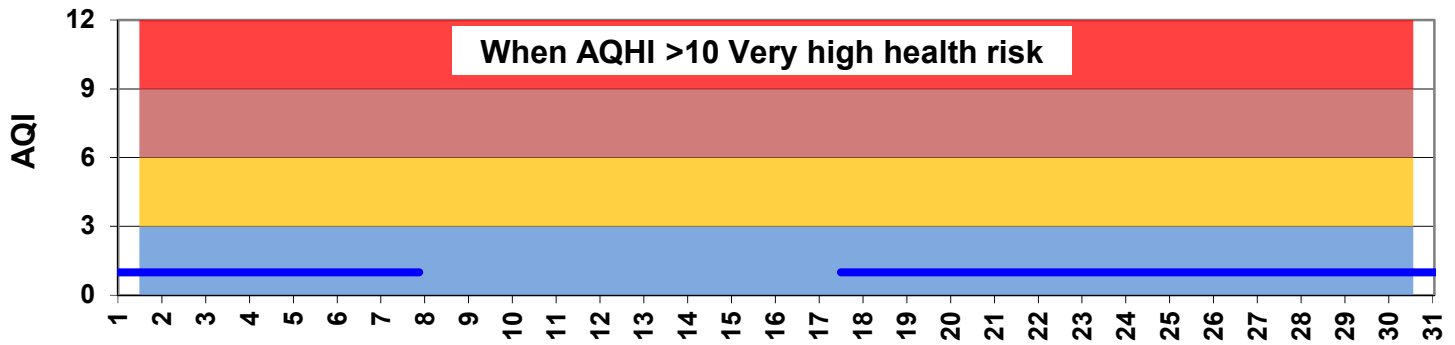
#### Update Summary:

There were fifteen readings above the 1-hr SEQG and two above the 24-hr SEQG for hydrogen sulphide in the month of July 2019, with the highest reading recorded during winds from the north-northeast. All instruments remained >95% uptime.

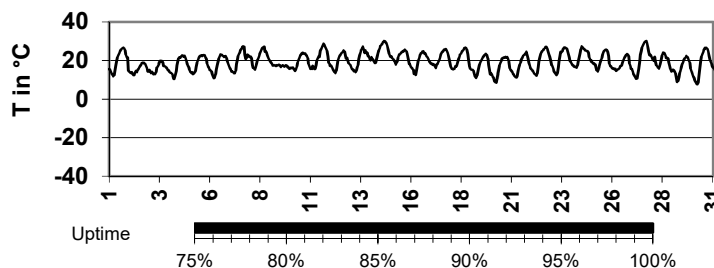
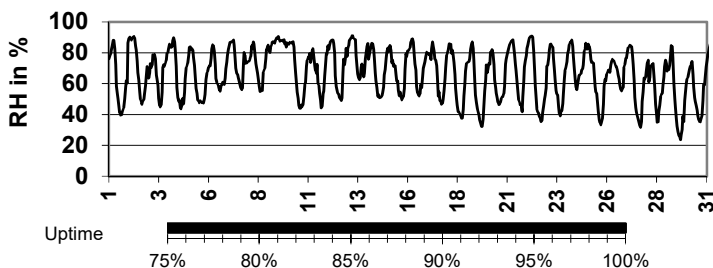
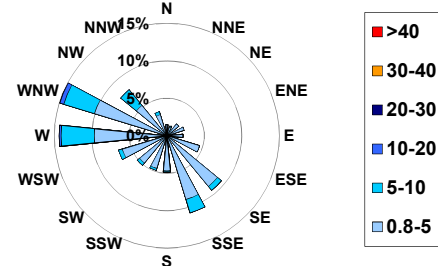
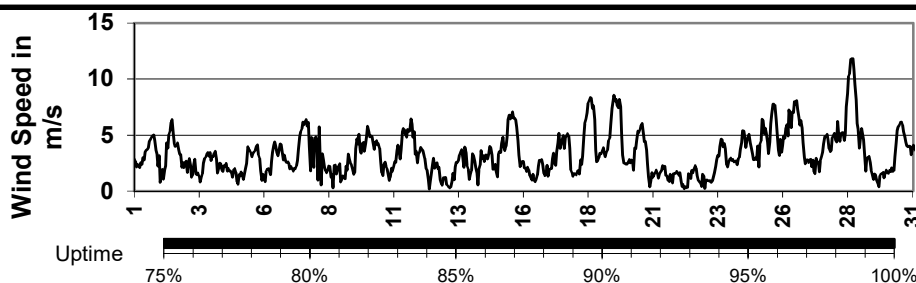
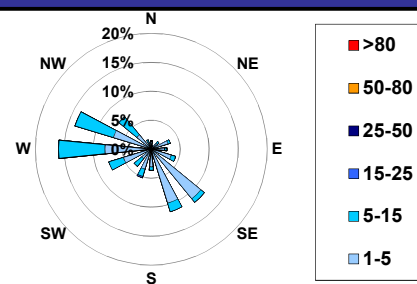
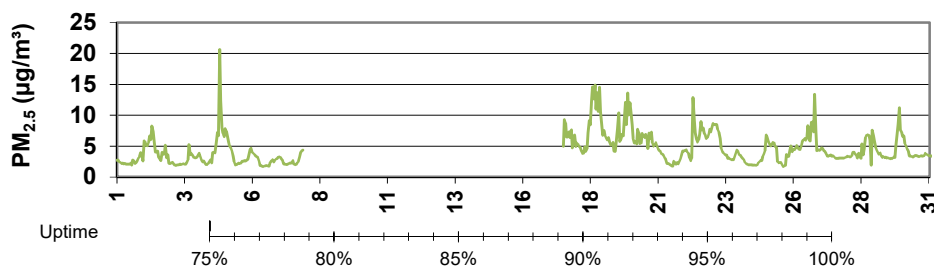


## SESAA - July 2019 Oxbow Station Report

Parm	Average	Uptime	1-hour			8-hour / 24-hour			Exceed 1hr / 24hr
			Max	Objective	Max Day and Time	Max	Objective	Max Day	
NO (ppb)	0.3	44.2%	10.1	-	Jul-29 17:00	0.7	-	Jul-29	- / -
NO <sub>2</sub> (ppb)	0.1	44.2%	2.6	159	Jul-18 06:00	0.4	106	Jul-22	0 / 0
NO <sub>x</sub> (ppb)	0.3	44.2%	11.6	-	Jul-29 17:00	1.0	-	Jul-22	- / -
SO <sub>2</sub> (ppb)	0.5	95.3%	7.8	172	Jul-22 12:00	1.9	-	Jul-22	0 / 0
H <sub>2</sub> S (ppb)	0.4	95.3%	2.9	11	Jul-20 07:00	0.7	3.6	Jul-19	0 / 0
O <sub>3</sub> (ppb)									
PM <sub>2.5</sub> (µg/m <sup>3</sup> )	4.5	69.1%	20.7	-	Jul-04 19:00	8.4	30	Jul-18	- / 0



## SESAA - July 2019 Oxbow Station Report



### Elevated Reading Summary

Date	NO <sub>2</sub>	SO <sub>2</sub>	H <sub>2</sub> S	O <sub>3</sub>	PM <sub>2.5</sub>	WS	WD	Temp	RH
7/20/2019 7:00	0.0	0.7	2.9	-	7.2	3.8	268.7	10.3	79.4

#### Update Summary:

There were no exceedance in the month of July 2019

The nitrogen dioxide (NO.NOx) analyzer was returned to service on July 17, 2019

The SHARP particulate analyzer was experiencing issues with high fluctuation, the instrument was attended to several times to address fixes as per manufacture recommendations