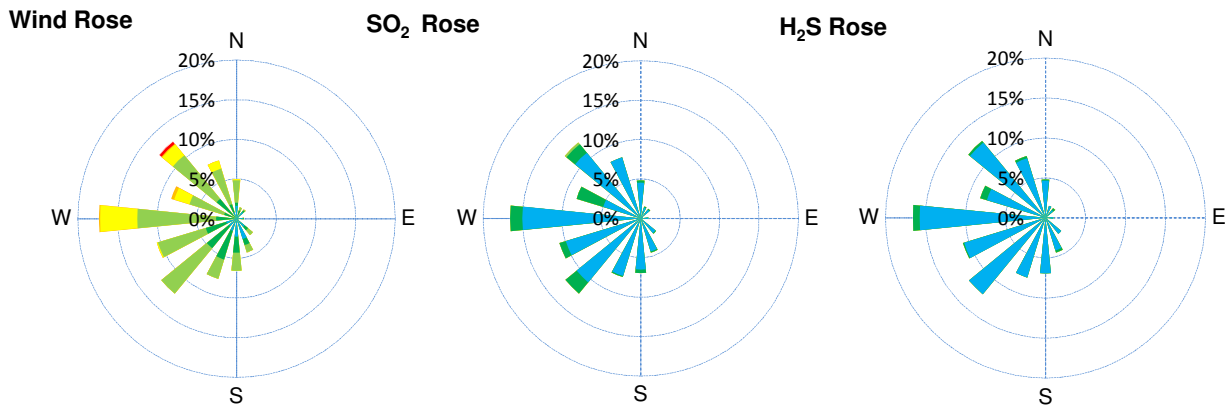
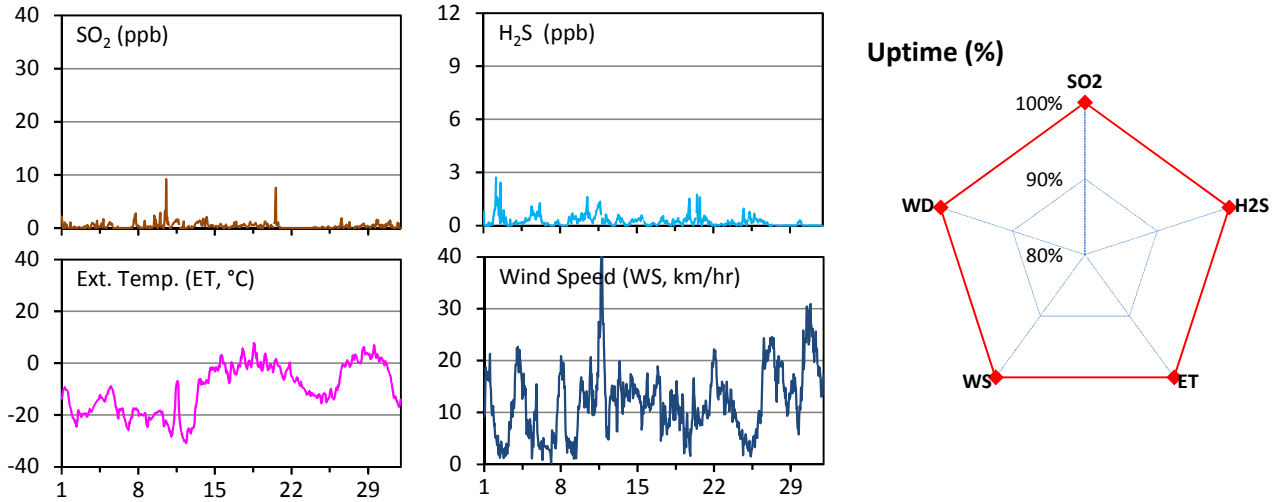


Husky Energy West Station - February 2017 Summary Report

Pollutants		Month Records		24-Hour Records				1-Hour Records			
Name	Conc. Unit	Avg. Conc.	Uptime	Maximum		AAAQO / SAAQS	Exceed Days	Maximum		AAAQO / SAAQS	Exceed Hours
				Conc.	Time			Conc.	Time		
SO ₂	ppb	0.5	100.0%	1.3	Feb-19	48 / 48	0 / 0	16.1	Feb-09 21:00	172 / 172	0 / 0
H ₂ S	ppb	0.2	100.0%	1.0	Feb-16	3 / 3.6	0 / 0	3.0	Feb-19 04:00	10 / 11.0	0 / 0

AAAQO: Alberta Ambient Air Quality Objectives; SAAQS: Saskatchewan Ambient Air Quality Standards.



Parameters	Unit	Color Code for Wind Spd & Pollutant Conc. Class					
Wind Speed	km/hr	1 ≤ WS < 5	5 ≤ WS < 10	10 ≤ WS < 20	20 ≤ WS < 30	30 ≤ WS < 40	WS ≥ 40
SO ₂	ppb	0 ≤ C < 1	1 ≤ C < 5	5 ≤ C < 10	10 ≤ C < 57	57 ≤ C < 172	C ≥ 172
H ₂ S	ppb	0 ≤ C < 1	1 ≤ C < 3.6	3.6 ≤ C < 5	5 ≤ C < 8	8 ≤ C < 11	C ≥ 11

Monthly Update

*Air monitoring data has been slope, intercept, and baseline corrected. Data may change after validation process.

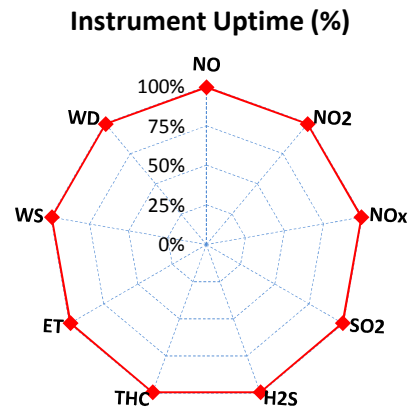
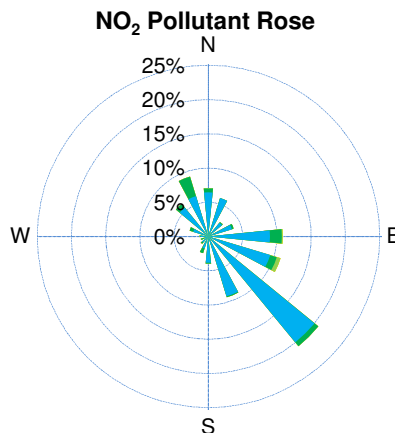
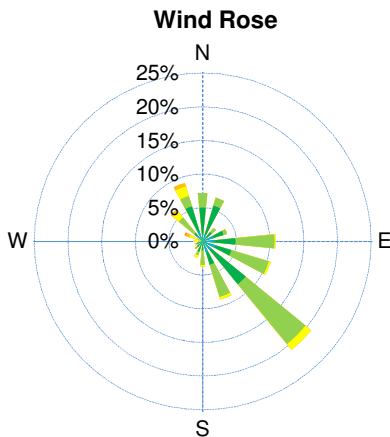
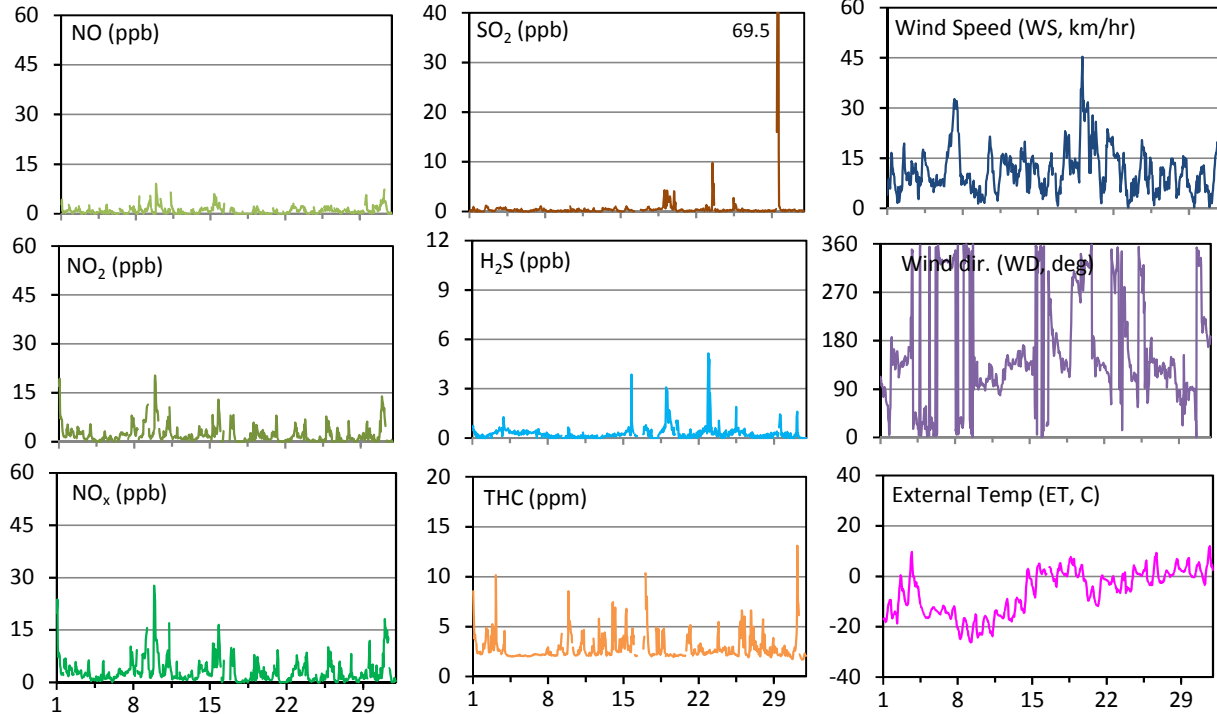
*All compliance parameters were within the Alberta Ambient Air Quality Objectives and the Saskatchewan Ambient Air Quality Standards

*All compliance parameters are above 90% operational. There are no operational issues to report.

Husky Energy East Station - March 2017 Summary Report

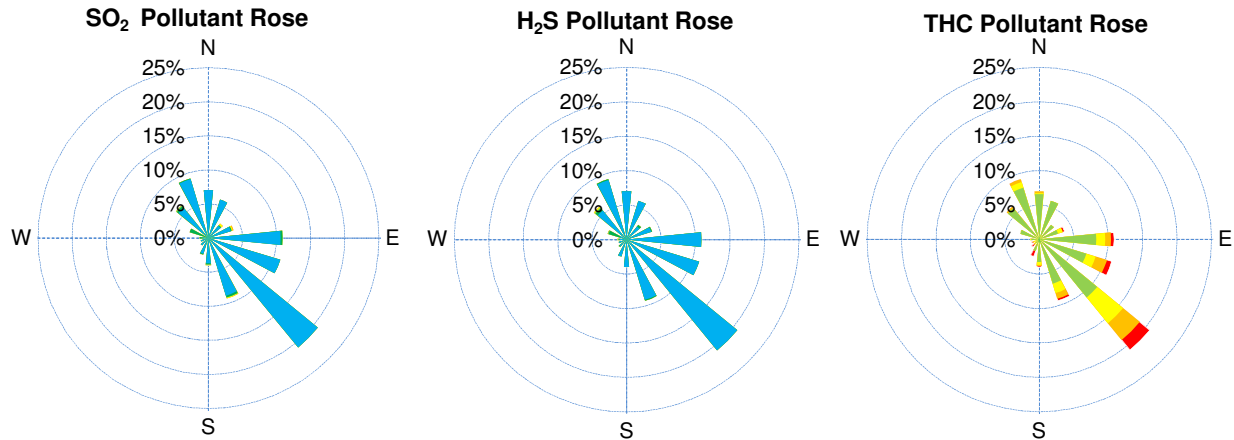
Pollutants		Month Records		24-Hour Records				1-Hour Records			
Name	Conc. Unit	Avg. Conc.	Uptime	Maximum		SAAQS Standards	Exceed Days	Maximum		SAAQS Standards	Exceed Hours
				Conc.	Time			Conc.	Time		
NO	ppb	0.9	99.4%	2.6	Mar-15	-	-	9.1	Mar-09 22:00	-	-
NO ₂	ppb	2.2	99.4%	6.4	Mar-9	106	0	20.3	Mar-09 23:00	159	0
NO _x	ppb	3.2	99.4%	8.6	Mar-9	-	-	27.7	Mar-09 22:00	-	-
SO ₂	ppb	0.6	99.4%	8.7	Mar-29	48	0	69.5	Mar-29 15:00	172	0
H ₂ S	ppb	0.3	99.4%	1.1	Mar-19	3.6	0	5.2	Mar-22 22:00	11.0	0
THC	ppm	2.9	99.4%	4.0	Mar-17	-	-	13.1	Mar-31 05:00	-	-

SAAQS: Saskatchewan Ambient Air Quality Standards



Parameters	Unit	Color Code for Wind Spd & Pollutant Conc. Class					
Wind Speed	km/hr	1 ≤ WS < 5	5 ≤ WS < 10	10 ≤ WS < 20	20 ≤ WS < 30	30 ≤ WS < 40	WS ≥ 40
SO ₂	ppb	0 ≤ C < 1	1 ≤ C < 5	5 ≤ C < 10	10 ≤ C < 57	57 ≤ C < 172	C ≥ 172
NO ₂	ppb	0 ≤ C < 5	5 ≤ C < 15	15 ≤ C < 30	30 ≤ C < 100	100 ≤ C < 212	C ≥ 212
H ₂ S	ppb	0 ≤ C < 1	1 ≤ C < 3.6	3.6 ≤ C < 5	5 ≤ C < 8	8 ≤ C < 11	C ≥ 11
THC	ppm	0 ≤ C < 1	1 ≤ C < 2	2 ≤ C < 3	3 ≤ C < 4	4 ≤ C < 5	C ≥ 5

Husky Energy East Station - March 2017 Summary Report



Monthly Update

*Air monitoring data has been slope, intercept, and baseline corrected. Data may change after validation process.

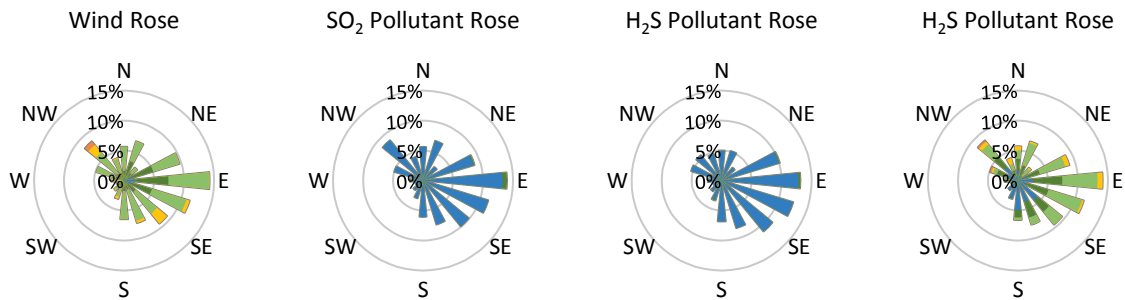
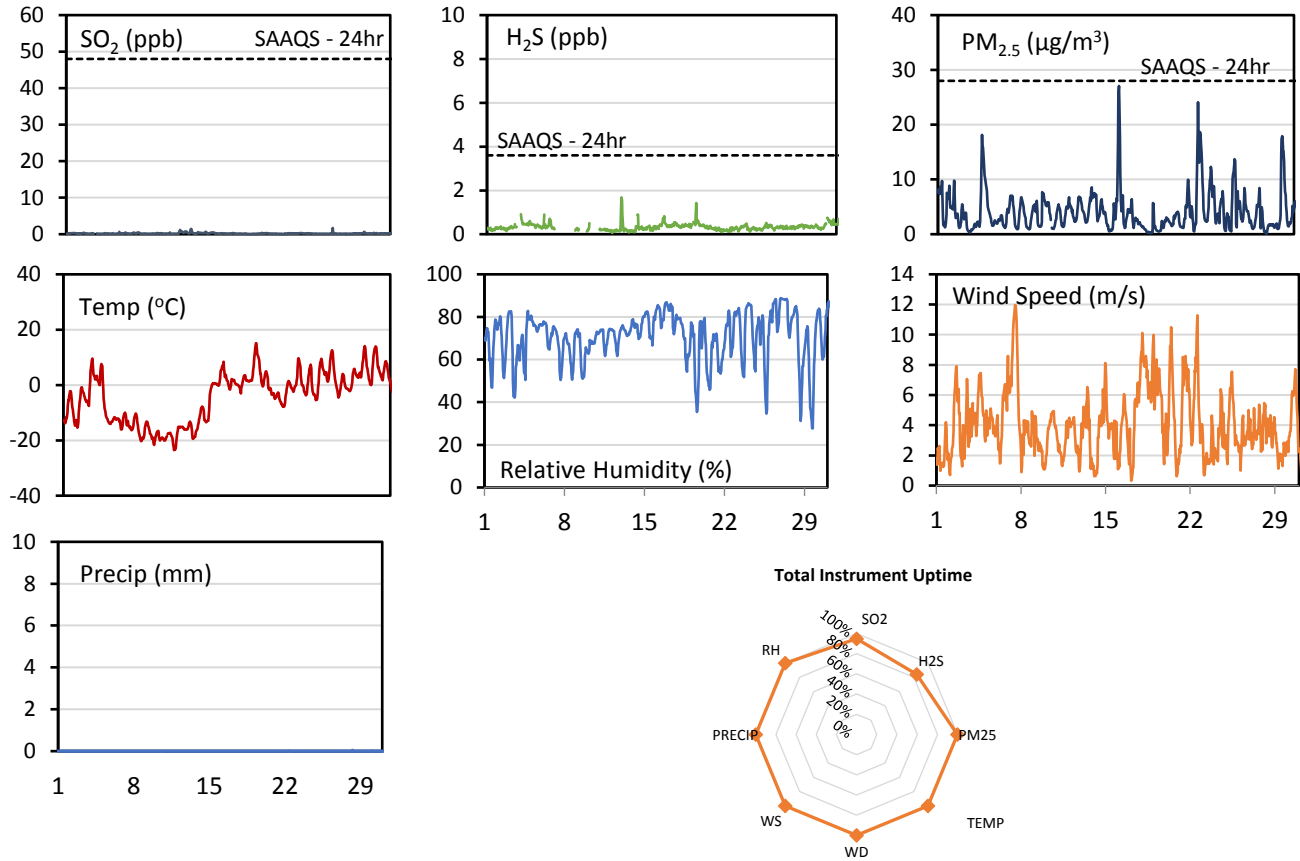
*All compliance parameters were within the Saskatchewan Ambient Air Quality Standards.

*All compliance parameters are above 90% operational. Operational issues include 5 hours of data flagged as "power failure" for all parameters on March 16, due to a power disruption at the station.

WYAMZ Kindersley Station - March 2017 Summary Report

Pollutants		Month Records		24-Hour Records				1-Hour Records			
Name	Conc. Unit	Avg. Conc.	Total Uptime	Maximum		SAAQS Standard	Exceed Days	Maximum		SAAQS Standard	Exceed Hours
				Conc.	Time			Conc.	Time		
SO ₂	ppb	0.2	95%	0.6	Mar-12	48	0	1.7	Mar-25 16:00	172	0
H ₂ S	ppb	0.3	84%	0.5	Mar-30	3.6	0	1.7	Mar-12 13:00	11	0
PM _{2.5}	µg/m ³	4.1	100%	8.3	Mar-23	28	0	27.1	Mar-16 06:00	-	-

SAAQS: Saskatchewan Ambient Air Quality Standards



Parameters	Unit	Color Code for Wind Speed and Pollution Concentration Class					
Wind Speed	m/s	0.3 ≤ WS < 1.4	1.4 ≤ WS < 3.1	3.1 ≤ WS < 7.8	7.8 ≤ WS < 10.8	10.8 ≤ WS < 13.6	WS ≥ 13.6
SO ₂	ppb	0 ≤ C < 1	1 ≤ C < 5	5 ≤ C < 10	10 ≤ C < 57	57 ≤ C < 172	C ≥ 172
H ₂ S	ppb	0 ≤ C < 1	1 ≤ C < 3.6	3.6 ≤ C < 5	5 ≤ C < 8	8 ≤ C < 10.8	C ≥ 10.8
PM _{2.5}	µg/m ³	0 ≤ C < 2	2 ≤ C < 4	4 ≤ C < 10	10 ≤ C < 20	20 ≤ C < 30	C ≥ 30

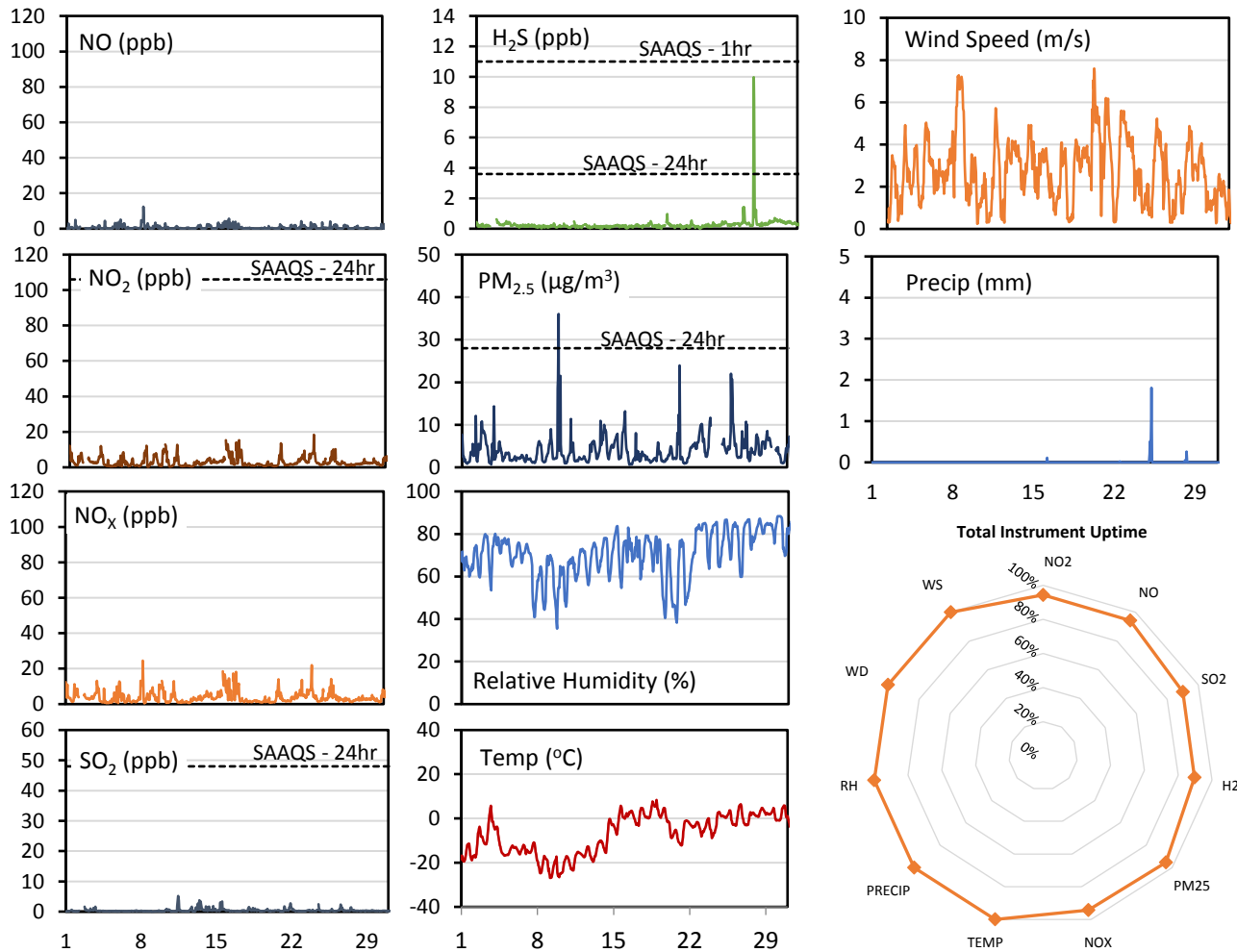
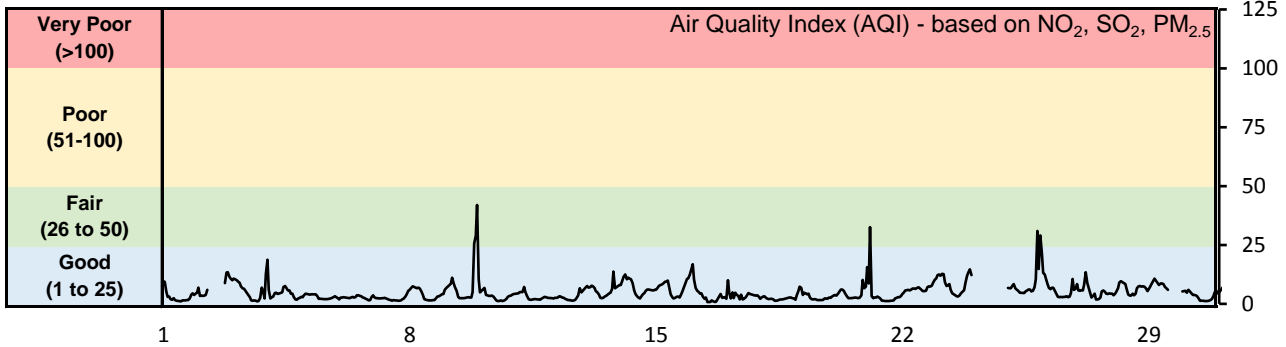
Monthly Update

- Achieved >99% of scheduled uptime for all parameters except H₂S (88%)
- Downtime of 4% results from routine daily Internal Zeroes and Spans
- Additional H₂S downtime due to operational issues
- Calibration performed March 3

WYAMZ Maidstone Station - March 2017 Summary Report

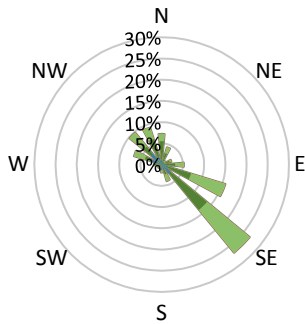
Pollutants		Month Records		24-Hour Records				1-Hour Records			
Name	Conc. Unit	Avg. Conc.	Total Uptime	Maximum		SAAQS Standard	Exceed Days	Maximum		SAAQS Standard	Exceed Hours
				Conc.	Time			Conc.	Time		
NO	ppb	0.7	94%	2.1	Mar-08	-	-	12.4	Mar-08 07:00	-	-
NO ₂	ppb	3.1	94%	5.9	Mar-16	106	0	18.4	Mar-24 05:00	159	0
NO _x	ppb	3.8	94%	7.8	Mar-16	-	-	24.5	Mar-08 07:00	-	-
SO ₂	ppb	0.4	90%	1.3	Mar-13	48	0	5.2	Mar-11 11:00	172	0
H ₂ S	ppb	0.3	90%	1.2	Mar-26	3.6	0	10.0	Mar-26 22:00	11	0
PM _{2.5}	µg/m ³	4.0	95%	7.1	Mar-25	28	0	36.0	Mar-09 22:00	-	-

SAAQS: Saskatchewan Ambient Air Quality Standards

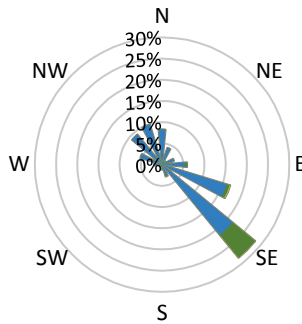


WYAMZ Maidstone Station - March 2017 Summary Report

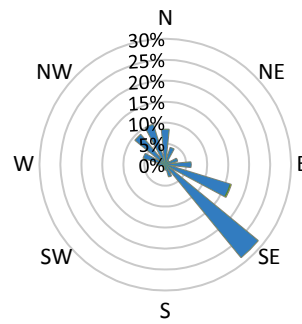
Wind Rose



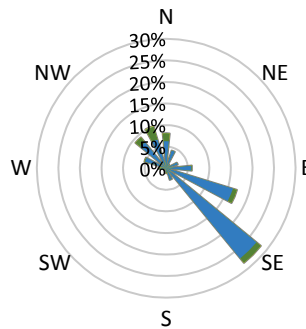
SO₂ Pollutant Rose



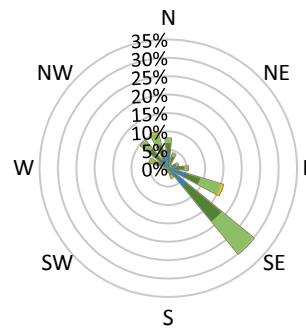
H₂S Pollutant Rose



NO₂ Pollutant Rose



PM_{2.5} Pollutant Rose



Parameters	Unit	Color Code for Wind Speed and Pollution Concentration Class					
		0.3 ≤ WS < 1.4	1.4 ≤ WS < 3.1	3.1 ≤ WS < 7.8	7.8 ≤ WS < 10.8	10.8 ≤ WS < 13.6	WS ≥ 13.6
SO ₂	ppb	0 ≤ C < 1	1 ≤ C < 5	5 ≤ C < 10	10 ≤ C < 57	57 ≤ C < 172	C ≥ 172
NO ₂	ppb	0 ≤ C < 5	5 ≤ C < 15	15 ≤ C < 30	30 ≤ C < 100	100 ≤ C < 212	C ≥ 212
H ₂ S	ppb	0 ≤ C < 1	1 ≤ C < 3.6	3.6 ≤ C < 5	5 ≤ C < 8	8 ≤ C < 10.8	C ≥ 10.8
PM _{2.5}	µg/m ³	0 ≤ C < 2	2 ≤ C < 4	4 ≤ C < 10	10 ≤ C < 20	20 ≤ C < 30	C ≥ 30

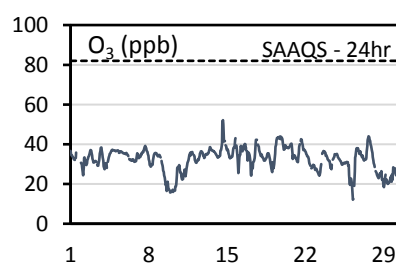
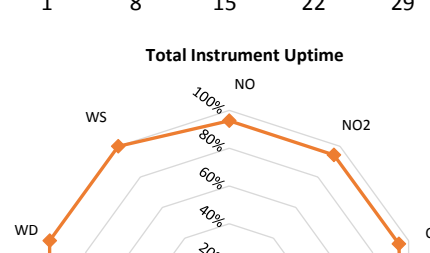
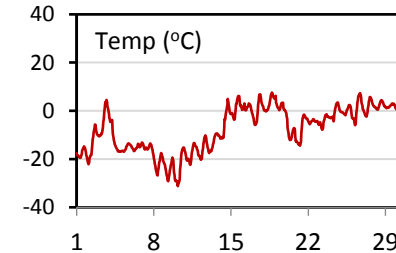
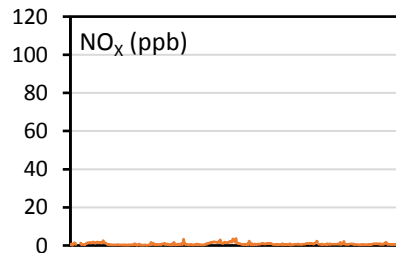
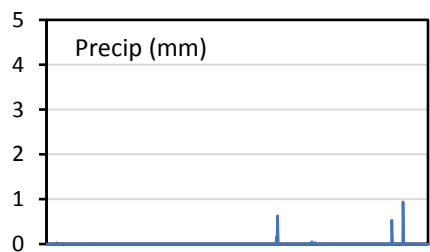
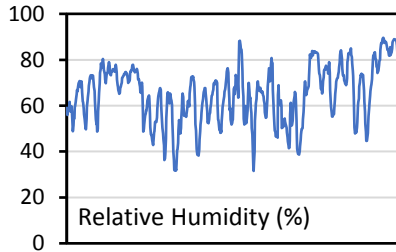
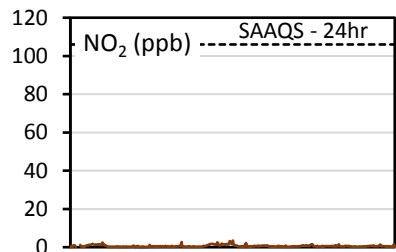
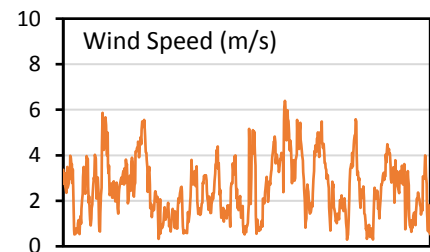
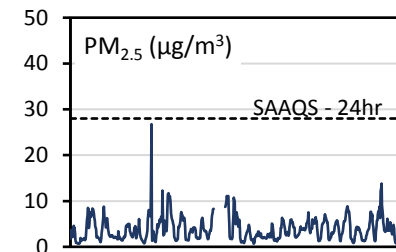
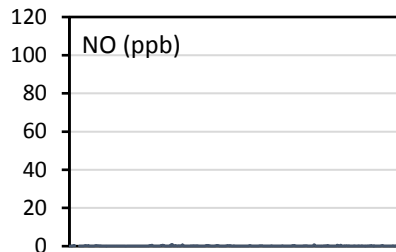
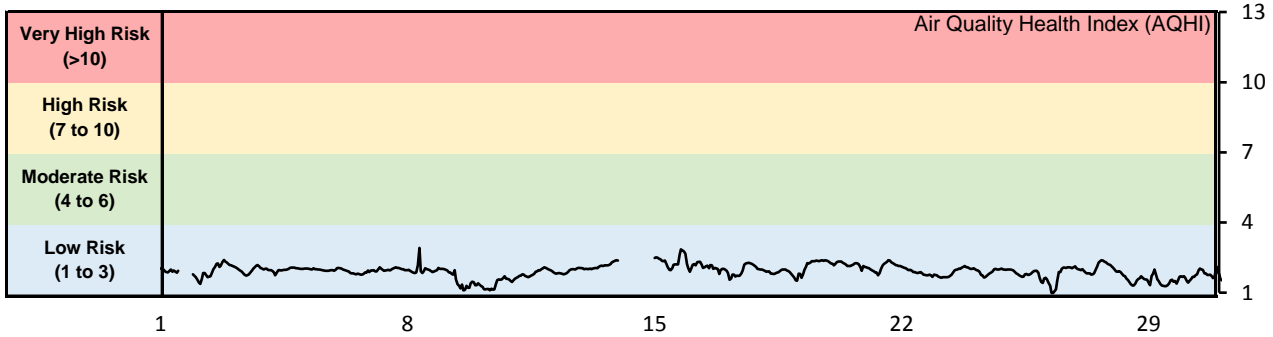
Monthly Update

- Achieved >98% of scheduled uptime for all parameters except PM_{2.5}
- NO/NO₂/NO_x downtime of 4% results from routine daily Internal Zeroes and Spans
- SO₂/H₂S downtime of 8% results from routine daily Internal Zeroes and Spans
- Calibration performed March 2

WYAMZ Meadow Lake Station - March 2017 Summary Report

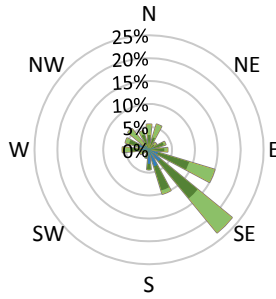
Pollutants		Month Records		24-Hour Records				1-Hour Records			
Name	Conc. Unit	Avg. Conc.	Total Uptime	Maximum		SAAQS Standard	Exceed Days	Maximum		SAAQS Standard	Exceed Hours
				Conc.	Time			Conc.	Time		
NO	ppb	0.2	94%	0.3	Mar-10	-	-	1.0	Mar-10 10:00	-	-
NO ₂	ppb	0.6	94%	1.7	Mar-15	106	0	3.5	Mar-16 01:00	159	0
NO _x	ppb	0.8	94%	2.0	Mar-15	-	-	3.7	Mar-16 01:00	-	-
O ₃	ppb	32.5	94%	38.6	Mar-14	-	-	52.1	Mar-14 15:00	82	0
PM _{2.5}	µg/m ³	3.8	97%	6.7	Mar-15	28	0	26.8	Mar-08 08:00	-	-

SAAQS: Saskatchewan Ambient Air Quality Standards

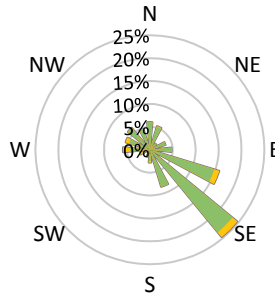


WYAMZ Meadow Lake Station - March 2017 Summary Report

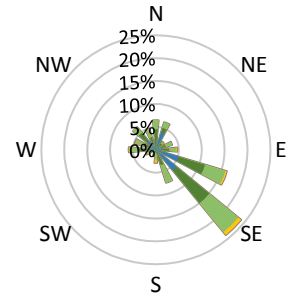
Wind Rose



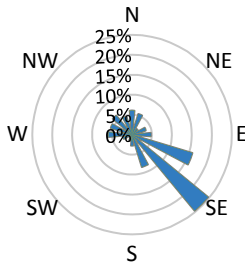
O₃ Pollutant Rose



PM_{2.5} Pollutant Rose



NO₂ Pollutant Rose



Parameters	Unit	Color Code for Wind Speed and Pollution Concentration Class						
		0.3 ≤ WS < 1.4	1.4 ≤ WS < 3.1	3.1 ≤ WS < 7.8	7.8 ≤ WS < 10.8	10.8 ≤ WS < 13.6	WS ≥ 13.6	
Wind Speed	m/s	0.3 ≤ WS < 1.4	1.4 ≤ WS < 3.1	3.1 ≤ WS < 7.8	7.8 ≤ WS < 10.8	10.8 ≤ WS < 13.6	WS ≥ 13.6	
O ₃	ppb	0 ≤ C < 10	10 ≤ C < 20	20 ≤ C < 40	40 ≤ C < 60	60 ≤ C < 82	C ≥ 82	
NO ₂	ppb	0 ≤ C < 5	5 ≤ C < 15	15 ≤ C < 30	30 ≤ C < 100	100 ≤ C < 212	C ≥ 212	
PM _{2.5}	µg/m ³	0 ≤ C < 2	2 ≤ C < 4	4 ≤ C < 10	10 ≤ C < 20	20 ≤ C < 30	C ≥ 30	

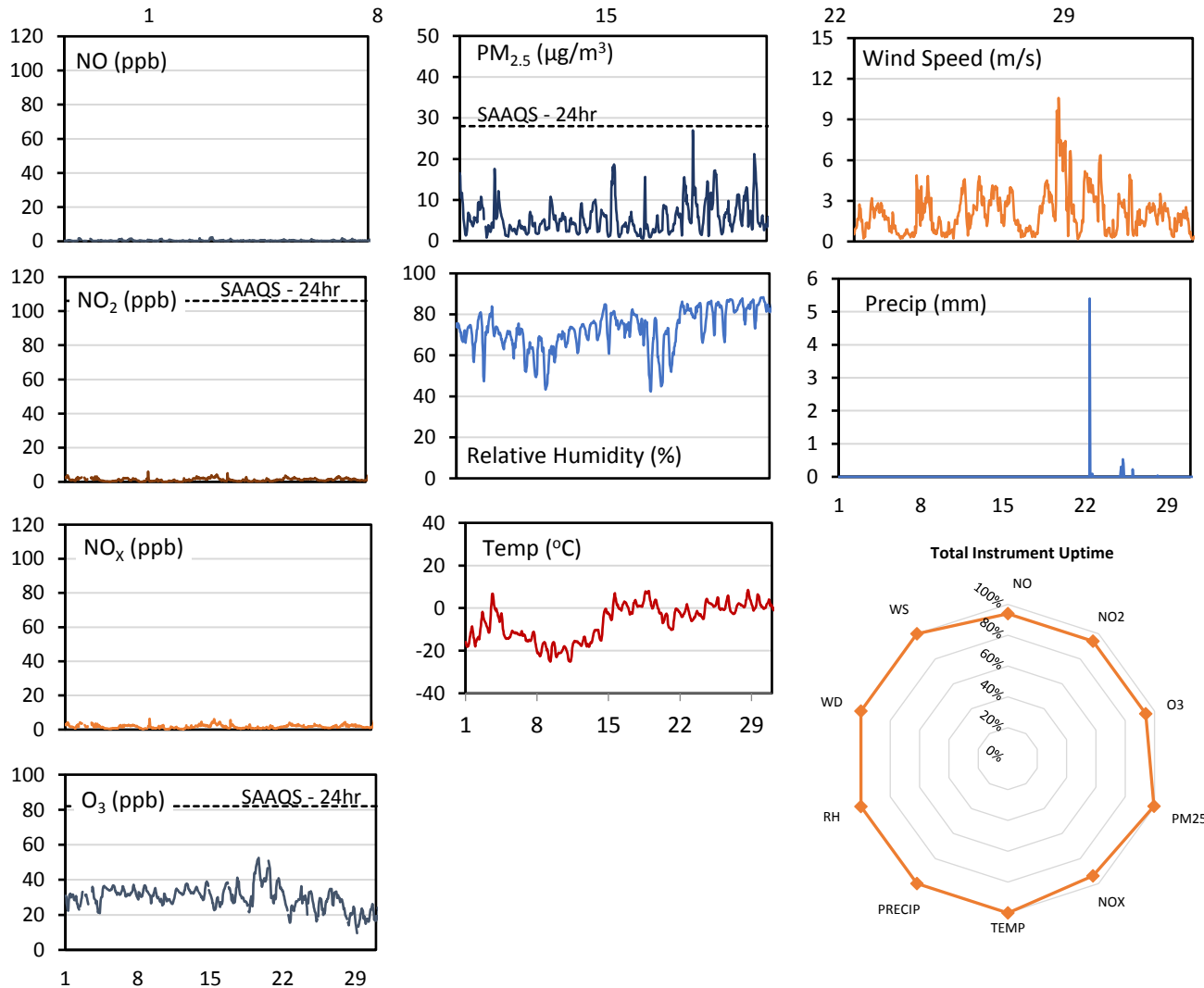
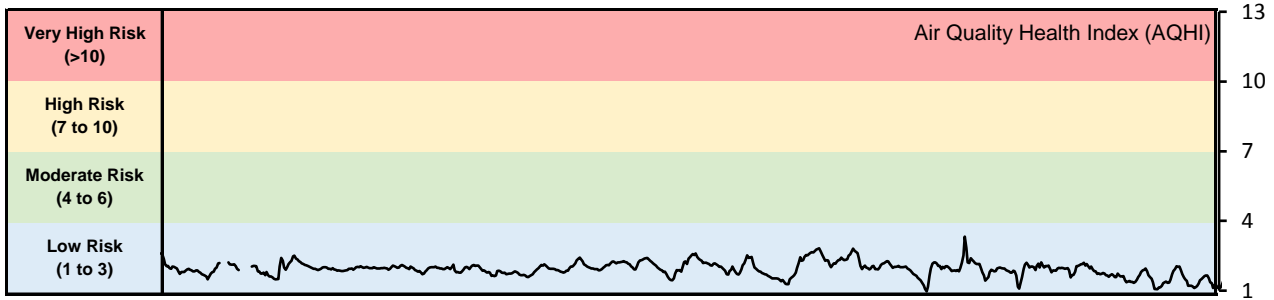
Monthly Update

- Achieved >98% of scheduled uptime for all parameters except PM_{2.5} (96.6%)
- Downtime of 4% results from routine daily Internal Zeroes and Spans
- Calibration performed March 1

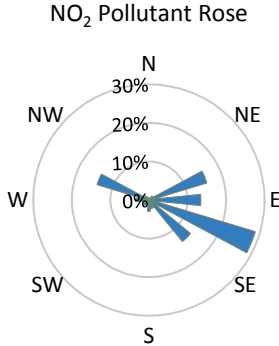
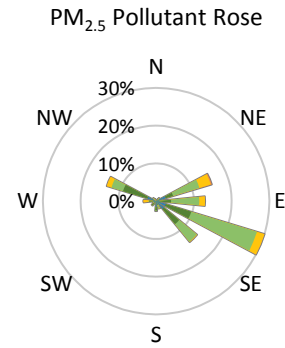
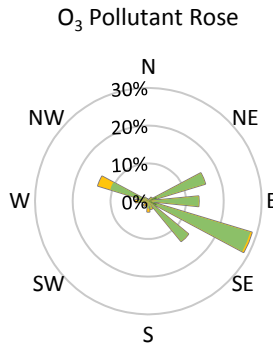
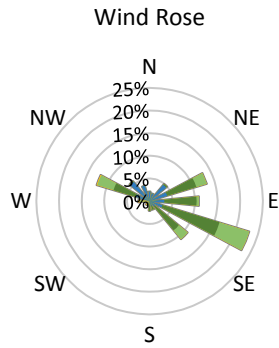
WYAMZ Unity Station - March 2017 Summary Report

Pollutants		Month Records		24-Hour Records				1-Hour Records			
Name	Conc. Unit	Avg. Conc.	Total Uptime	Maximum		SAAQS Standard	Exceed Days	Maximum		SAAQS Standard	Exceed Hours
				Conc.	Time			Conc.	Time		
NO	ppb	0.4	94%	0.9	Mar-15	-	-	2.3	Mar-15 14:00	-	-
NO ₂	ppb	1.3	94%	2.4	Mar-15	106	0	6.0	Mar-09 07:00	159	0
NO _x	ppb	1.7	94%	3.3	Mar-15	-	-	6.4	Mar-09 07:00	-	-
O ₃	ppb	30.0	94%	42.0	Mar-19	-	-	52.6	Mar-19 16:00	82	0
PM _{2.5}	µg/m ³	5.5	100%	10.6	Mar-25	28	0	27.0	Mar-23 19:00	-	-

SAAQS: Saskatchewan Ambient Air Quality Standards



WYAMZ Unity Station - March 2017 Summary Report



Parameters	Unit	Color Code for Wind Speed and Pollution Concentration Class						
		0.3 ≤ WS < 1.4	1.4 ≤ WS < 3.1	3.1 ≤ WS < 7.8	7.8 ≤ WS < 10.8	10.8 ≤ WS < 13.6	WS ≥ 13.6	
Wind Speed	m/s	0.3 ≤ WS < 1.4	1.4 ≤ WS < 3.1	3.1 ≤ WS < 7.8	7.8 ≤ WS < 10.8	10.8 ≤ WS < 13.6	WS ≥ 13.6	
O ₃	ppb	0 ≤ C < 10	10 ≤ C < 20	20 ≤ C < 40	40 ≤ C < 60	60 ≤ C < 82	C ≥ 82	
NO ₂	ppb	0 ≤ C < 5	5 ≤ C < 15	15 ≤ C < 30	30 ≤ C < 100	100 ≤ C < 212	C ≥ 212	
PM _{2.5}	µg/m ³	0 ≤ C < 2	2 ≤ C < 4	4 ≤ C < 10	10 ≤ C < 20	20 ≤ C < 30	C ≥ 30	

Monthly Update

- Achieved >98% of scheduled uptime for all parameters
- Downtime of 4% results from routine daily Internal Zeroes and Spans
- Calibration performed March 2 and 3