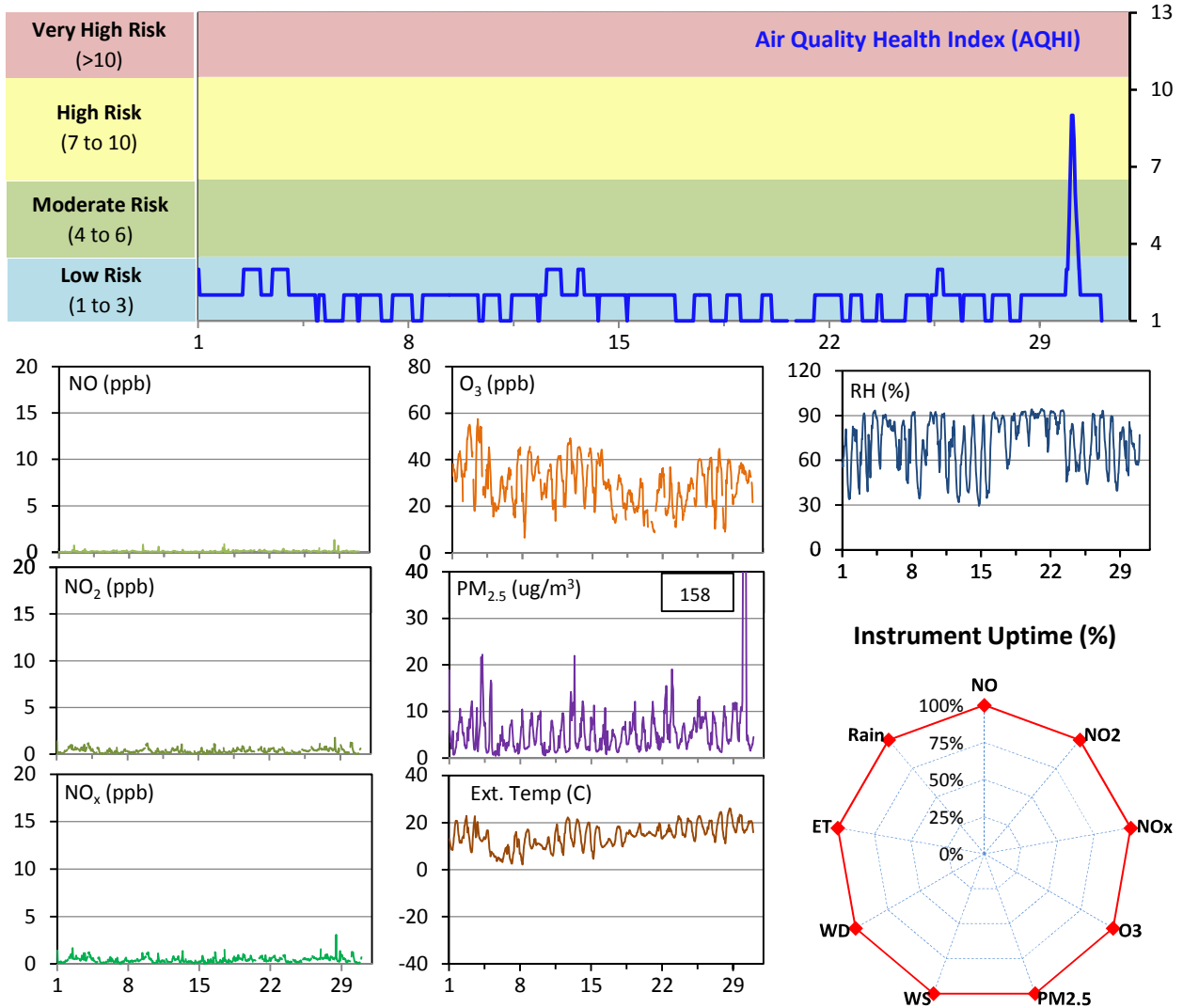


WYAMZ Meadow Lake Station - June 2014 Summary Report

Pollutants		Month Records		24-Hour Records				1-Hour Records			
Name	Conc. Unit	Avg. Conc.	Uptime	Maximum		SAAQS Objective	Exceed Days	Maximum		SAAQS Objective	Exceed Hours
				Conc.	Time			Conc.	Time		
NO	ppb	0.1	100.0%	0.2	Jun-28	-	-	1.3	Jun-28 11:00	-	-
NO ₂	ppb	0.4	100.0%	0.6	Jun-2	106	0	1.8	Jun-28 11:00	159	0
NO _x	ppb	0.4	100.0%	0.7	Jun-2	-	-	3.1	Jun-28 11:00	-	-
O ₃	ppb	30	100.0%	43	Jun-2	-	-	58	Jun-03 13:00	82	0
PM _{2.5}	ug/m3	6	100.0%	29	Jun-30	30	0	158	Jun-30 00:00	-	-

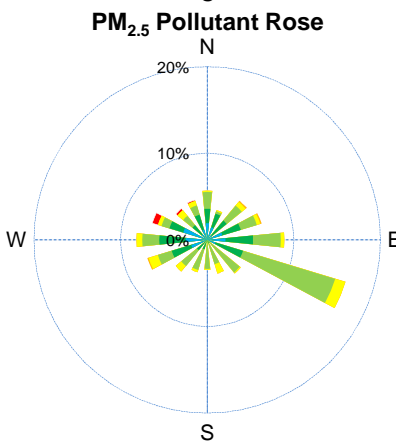
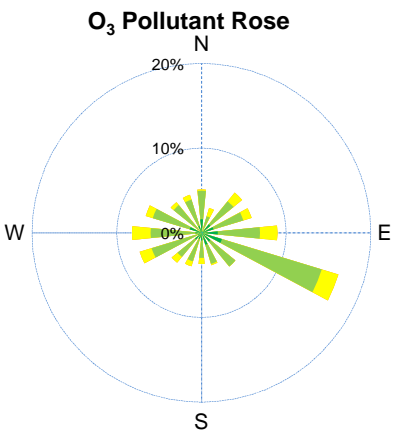
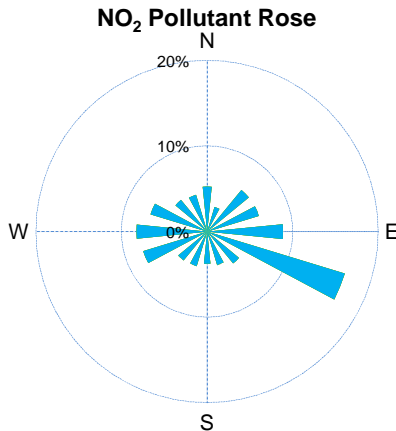
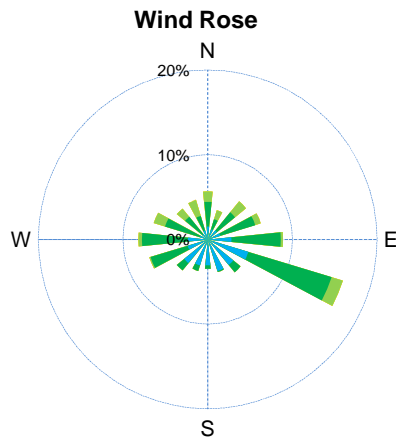
SAAQS: Saskatchewan Ambient Air Quality Standards



Monthly Update

- *All data has been slope, intercept, and baseline corrected. Data may change after validation process.
- *All compliance parameters were within the Saskatchewan Ambient Air Quality Standards.
- *All compliance parameters were greater than 90% operational.
- *There are no operational issues to report.

WYAMZ Meadow Lake Station - June 2014 Summary Report

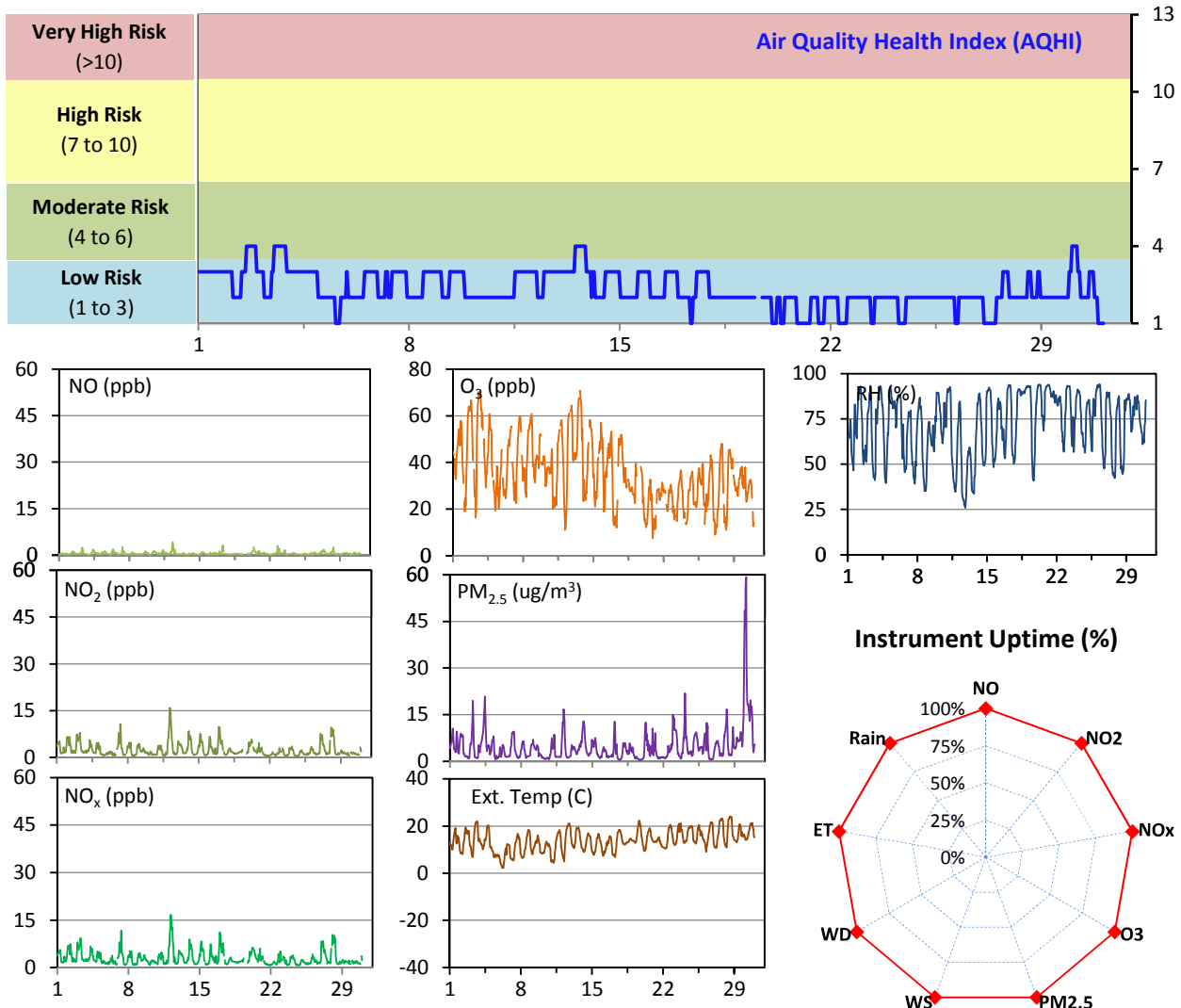


Parameters	Unit	Color Code for Wind Spd & Pollutant Conc. Class					
Wind Speed	m/s	0.3 ≤ WS < 1.4	1.4 ≤ WS < 3.1	3.1 ≤ WS < 7.8	7.8 ≤ WS < 10.8	10.8 ≤ WS < 13.6	WS ≥ 13.6
NO ₂	ppb	0 ≤ C < 5	5 ≤ C < 15	15 ≤ C < 30	30 ≤ C < 100	100 ≤ C < 212	C ≥ 212
O ₃	ppb	0 ≤ C < 10	10 ≤ C < 20	20 ≤ C < 40	40 ≤ C < 60	60 ≤ C < 82	C ≥ 82
PM _{2.5}	ug/m ³	0 ≤ C < 2	2 ≤ C < 4	4 ≤ C < 10	10 ≤ C < 20	20 ≤ C < 30	C ≥ 30

WYAMZ Unity Station - June 2014 Summary Report

Pollutants		Month Records		24-Hour Records				1-Hour Records			
Name	Conc. Unit	Avg. Conc.	Uptime	Maximum		SAAQS Objective	Exceed Days	Maximum		SAAQS Objective	Exceed Hours
				Conc.	Time			Conc.	Time		
NO	ppb	0.5	100.0%	1.0	Jun-12	-	-	4.1	Jun-12 07:00	-	-
NO ₂	ppb	2.4	100.0%	5.6	Jun-12	106	0	16.0	Jun-12 03:00	159	0
NO _x	ppb	3.0	100.0%	6.6	Jun-12	-	-	16.7	Jun-12 04:00	-	-
O ₃	ppb	35	100.0%	52	Jun-13	-	-	71	Jun-13 16:00	82	0
PM _{2.5}	ug/m3	5	100.0%	20	Jun-30	30	0	59	Jun-30 03:00	-	-

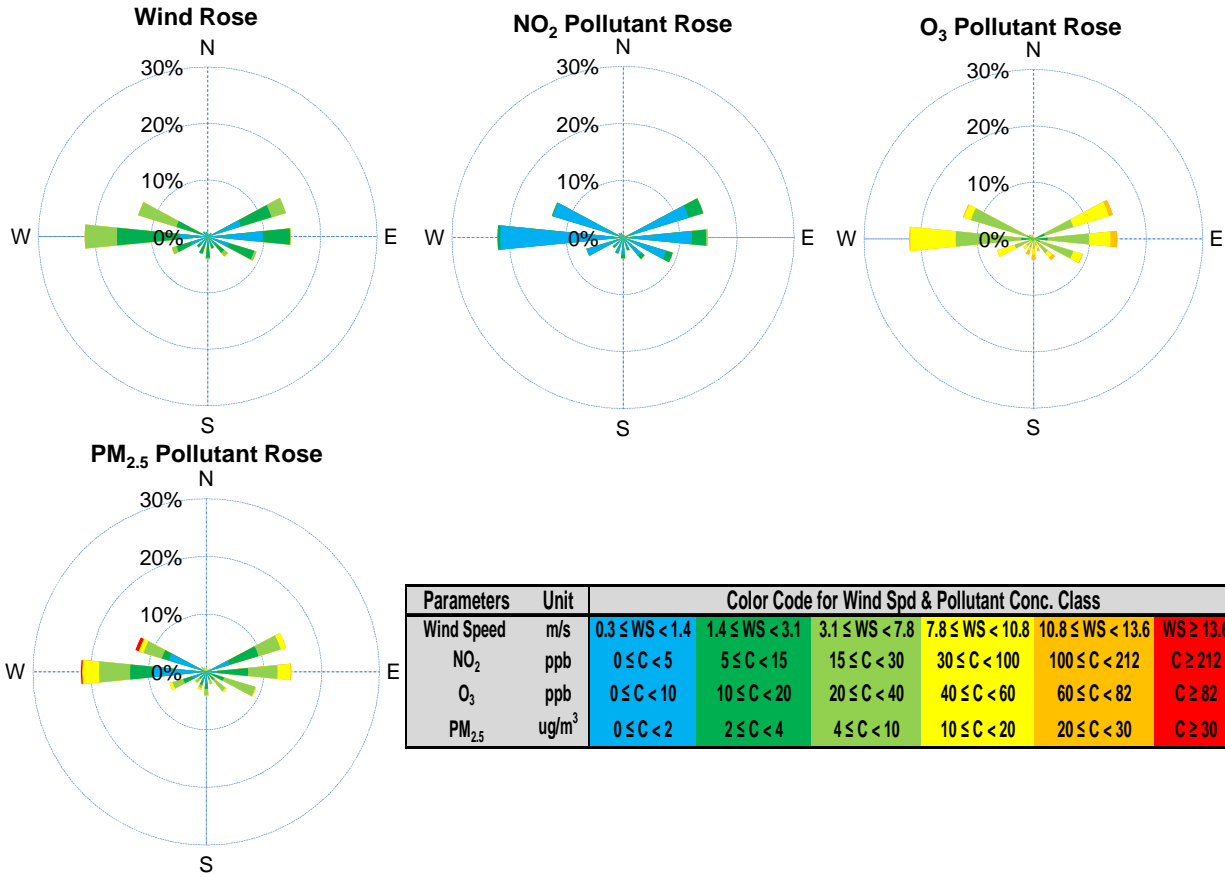
SAAQS: Saskatchewan Ambient Air Quality Standards



Monthly Update

- *All data has been slope, intercept, and baseline corrected. Data may change after validation process.
- *All compliance parameters were within the Saskatchewan Ambient Air Quality Standards.
- *All compliance parameters are above 90% operational.
- *There are no operational issues to report.

WYAMZ Unity Station - June 2014 Summary Report

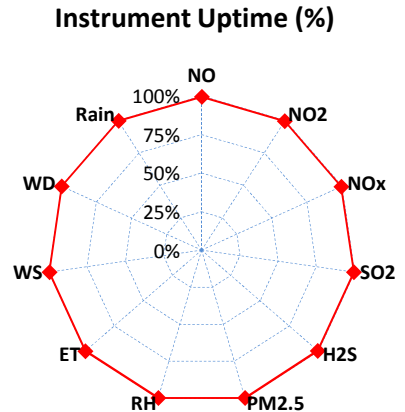
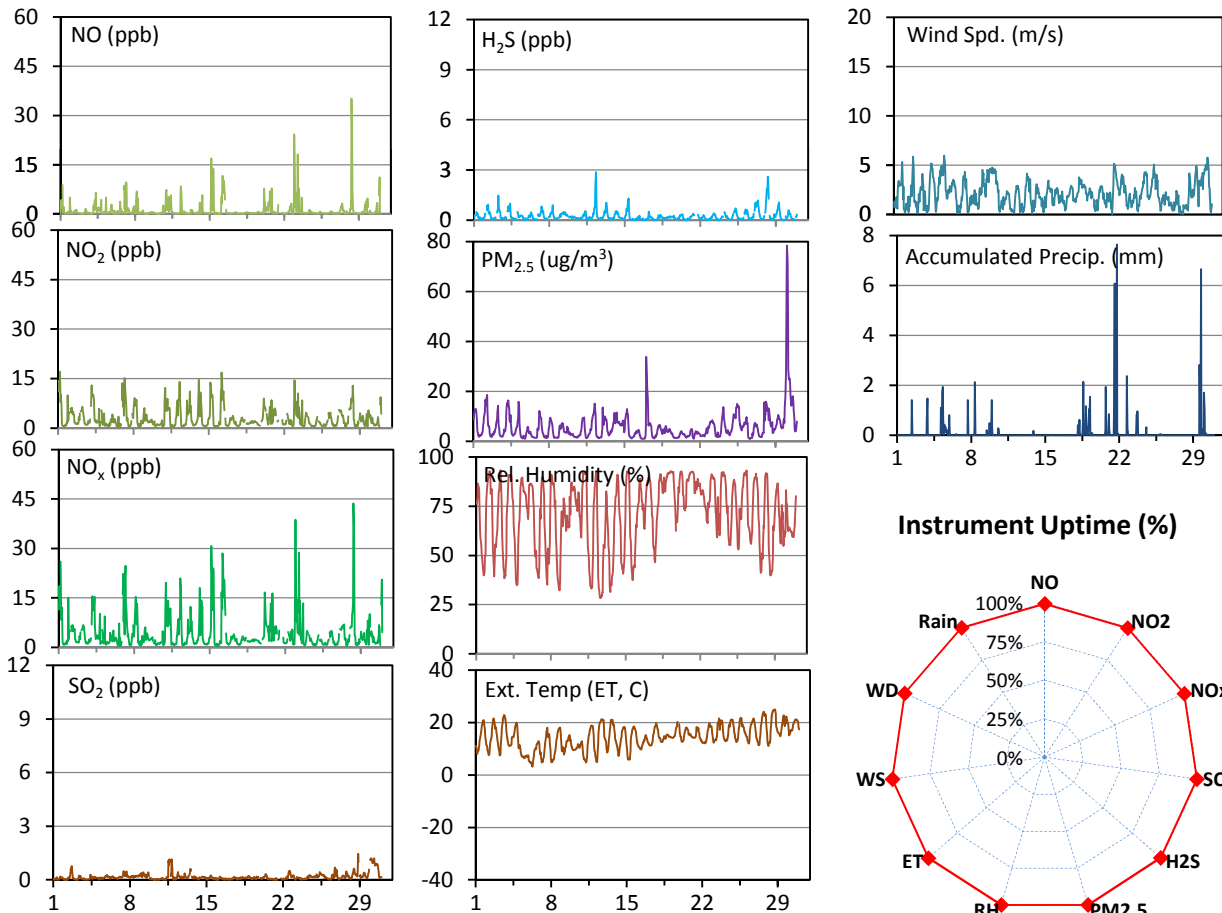
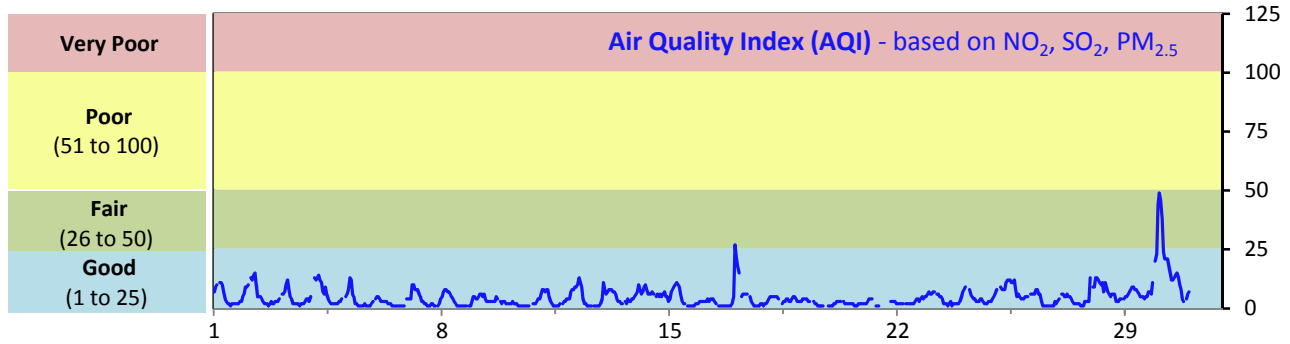


Parameters	Unit	Color Code for Wind Spd & Pollutant Conc. Class					
Wind Speed	m/s	$0.3 \leq WS < 1.4$	$1.4 \leq WS < 3.1$	$3.1 \leq WS < 7.8$	$7.8 \leq WS < 10.8$	$10.8 \leq WS < 13.6$	$WS \geq 13.6$
NO ₂	ppb	$0 \leq C < 5$	$5 \leq C < 15$	$15 \leq C < 30$	$30 \leq C < 100$	$100 \leq C < 212$	$C \geq 212$
O ₃	ppb	$0 \leq C < 10$	$10 \leq C < 20$	$20 \leq C < 40$	$40 \leq C < 60$	$60 \leq C < 82$	$C \geq 82$
PM _{2.5}	ug/m ³	$0 \leq C < 2$	$2 \leq C < 4$	$4 \leq C < 10$	$10 \leq C < 20$	$20 \leq C < 30$	$C \geq 30$

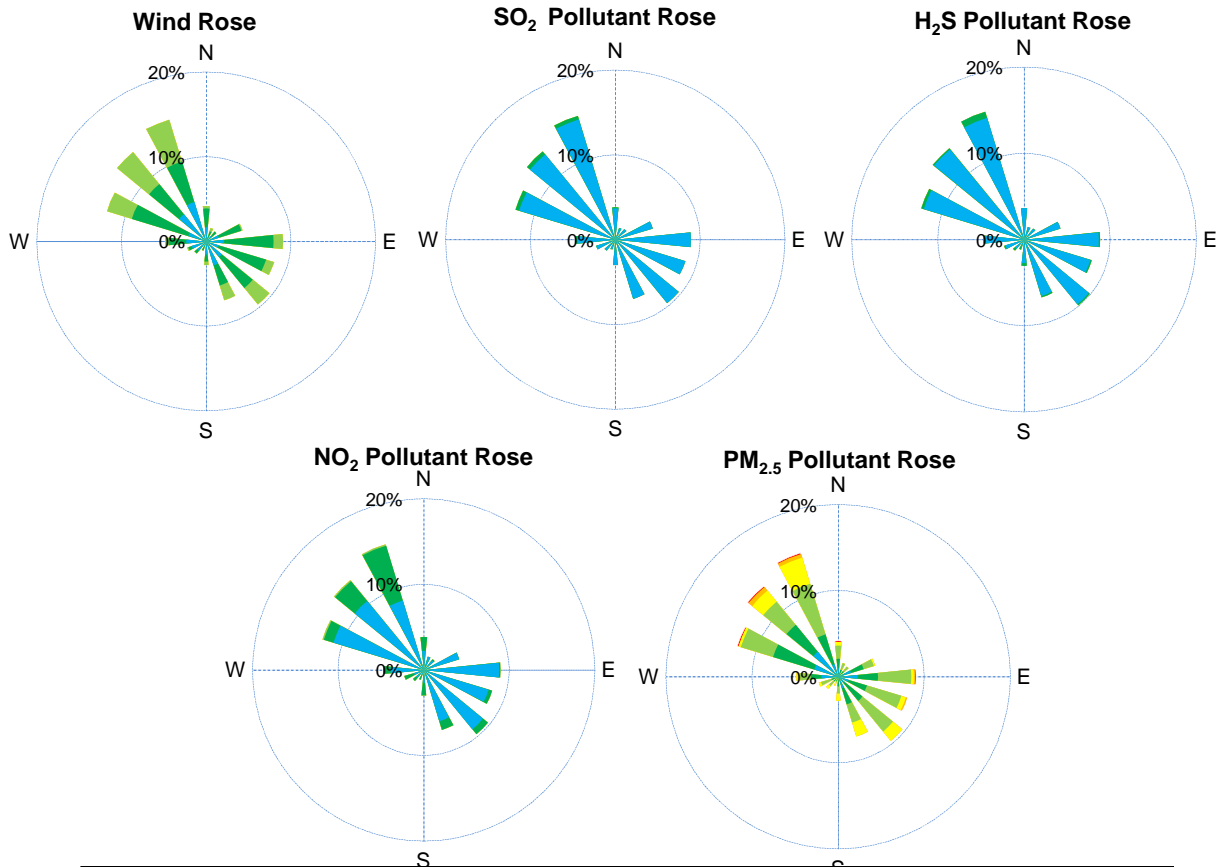
WYAMZ Maidstone Station - June 2014 Summary Report

Pollutants		Month Records		24-Hour Records				1-Hour Records			
Name	Conc. Unit	Avg. Conc.	Uptime	Maximum		SAAQS	Exceed Days	Maximum		SAAQS	Exceed Hours
				Conc.	Time	Objective		Conc.	Time	Objective	
NO	ppb	1.2	99.4%	3.5	Jun-28	-	-	35.2	Jun-28 07:00	-	-
NO ₂	ppb	3.1	99.4%	4.9	Jun-16	106	0	17.2	Jun-01 04:00	159	0
NO _x	ppb	4.3	99.4%	8.0	Jun-16	-	-	43.7	Jun-28 07:00	-	-
SO ₂	ppb	0.2	99.6%	0.8	Jun-30	48	0	1.5	Jun-28 20:00	172	0
H ₂ S	ppb	0.3	99.4%	0.7	Jun-28	3.6	0	2.9	Jun-12 07:00	10.8	0
PM _{2.5}	ug/m3	6	99.7%	24	Jun-30	30	0	78	Jun-30 01:00	-	-

SAAQS: Saskatchewan Ambient Air Quality Standards



WYAMZ Maidstone Station - June 2014 Summary Report



Parameters	Unit	Color Code for Wind Spd & Pollutant Conc. Class						
Wind Speed	m/s	0.3 ≤ WS < 1.4	1.4 ≤ WS < 3.1	3.1 ≤ WS < 7.8	7.8 ≤ WS < 10.8	10.8 ≤ WS < 13.6	WS ≥ 13.6	
SO ₂	ppb	0 ≤ C < 1	1 ≤ C < 5	5 ≤ C < 10	10 ≤ C < 57	57 ≤ C < 172	C ≥ 172	
NO ₂	ppb	0 ≤ C < 5	5 ≤ C < 15	15 ≤ C < 30	30 ≤ C < 100	100 ≤ C < 212	C ≥ 212	
H ₂ S	ppb	0 ≤ C < 1	1 ≤ C < 3.6	3.6 ≤ C < 5	5 ≤ C < 8	8 ≤ C < 10.8	C ≥ 10.8	
PM _{2.5}	ug/m ³	0 ≤ C < 2	2 ≤ C < 4	4 ≤ C < 10	10 ≤ C < 20	20 ≤ C < 30	C ≥ 30	

Monthly Update

*All data has been slope, intercept, and baseline corrected. Data may change after validation process.

*All compliance parameters were within the Saskatchewan Ambient Air Quality Standards.

*All compliance parameters are above 90% operational.

*Operational issues include: 3 hours of SO₂ data, 4 hours of NO/NO₂/NO_x and H₂S data, and 2 hours of data for all other parameters flagged as "power failure" throughout the month. Analyzer recovery times vary following power disruptions.

