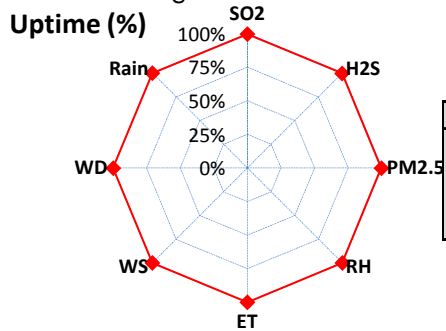
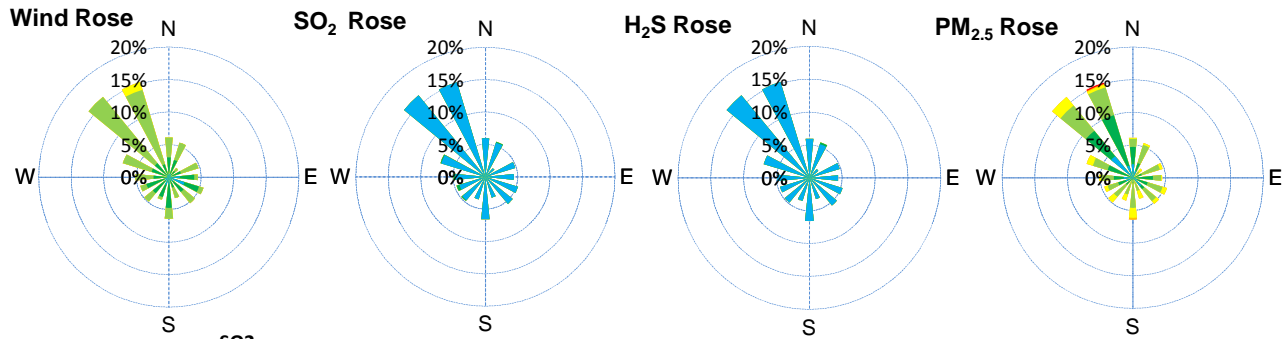
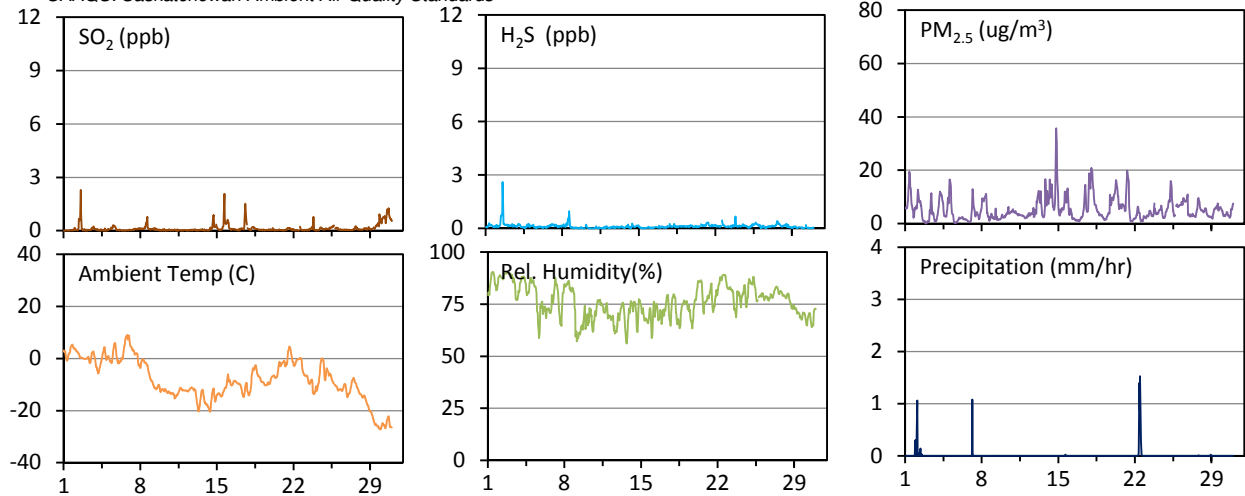


WYAMZ Kindersley Station - November 2014 Summary Report

| Pollutants | | Month Records | | 24-Hour Records | | | | 1-Hour Records | | | |
|-------------------|-------------------|---------------|--------|-----------------|--------|-----------------|-------------|----------------|--------------|-----------------|--------------|
| Name | Conc. Unit | Avg. Conc. | Uptime | Maximum | | SAAQS Objective | Exceed Days | Maximum | | SAAQS Objective | Exceed Hours |
| | | | | Conc. | Time | | | Conc. | Time | | |
| SO ₂ | ppb | 0.1 | 99.7% | 0.8 | Nov-30 | 57 | 0 | 2.3 | Nov-02 13:00 | 172 | 0 |
| H ₂ S | ppb | 0.1 | 99.7% | 0.4 | Nov-2 | 3.6 | 0 | 2.6 | Nov-02 13:00 | 10.8 | 0 |
| PM _{2.5} | ug/m ³ | 5 | 99.7% | 13 | Nov-14 | 30 | 0 | 36 | Nov-14 19:00 | - | - |

SAAQS: Saskatchewan Ambient Air Quality Standards



| Parameters | Unit | Color Code for Wind Spd & Pollutant Conc. Class | | | | | |
|-------------------|-------------------|---|----------------|----------------|-----------------|------------------|-----------|
| Wind Speed | m/s | 0.3 ≤ WS < 1.4 | 1.4 ≤ WS < 3.1 | 3.1 ≤ WS < 7.8 | 7.8 ≤ WS < 10.8 | 10.8 ≤ WS < 13.6 | WS ≥ 13.6 |
| SO ₂ | ppb | 0 ≤ C < 1 | 1 ≤ C < 5 | 5 ≤ C < 10 | 10 ≤ C < 57 | 57 ≤ C < 172 | C ≥ 172 |
| H ₂ S | ppb | 0 ≤ C < 1 | 1 ≤ C < 3.6 | 3.6 ≤ C < 5 | 5 ≤ C < 8 | 8 ≤ C < 10.8 | C ≥ 10.8 |
| PM _{2.5} | ug/m ³ | 0 ≤ C < 2 | 2 ≤ C < 4 | 4 ≤ C < 10 | 10 ≤ C < 20 | 20 ≤ C < 30 | C ≥ 30 |

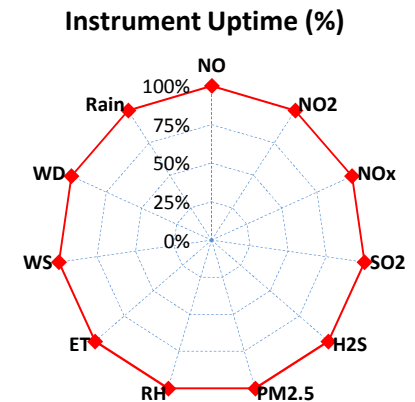
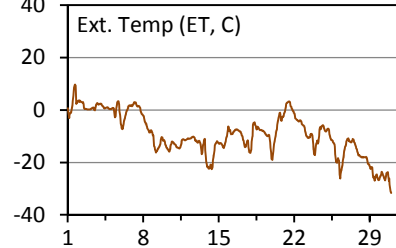
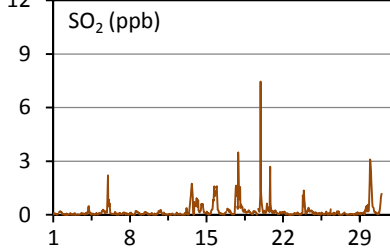
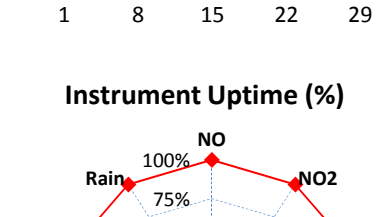
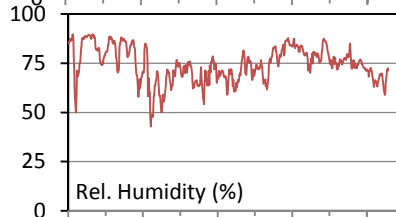
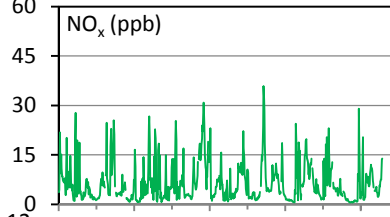
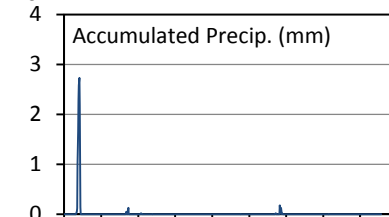
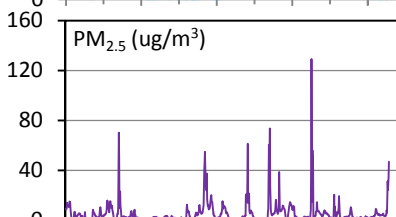
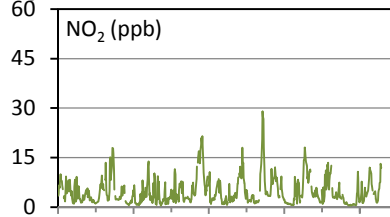
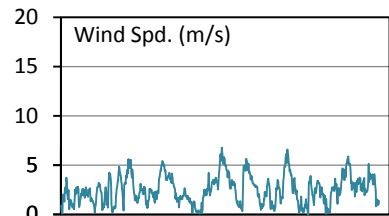
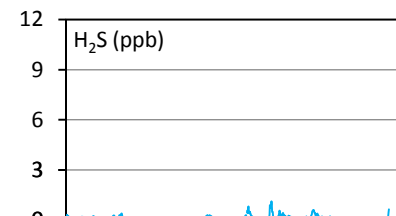
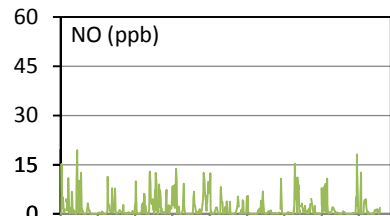
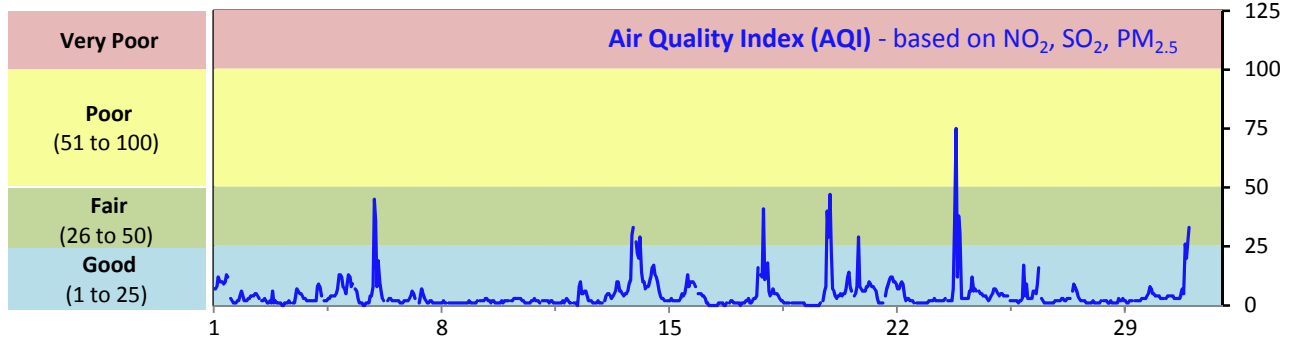
Monthly Update

- *All data has been slope, intercept, and baseline corrected. Data may change after validation process.
- *All compliance parameters were within the Saskatchewan Ambient Air Quality Standards.
- *All compliance parameters are above 90% operational.
- *Operational issues include 2 hours of H₂S and SO₂ data, and 1 hour for all other parameters, flagged as "power failure" on Nov 25, due to a power disruption. SO₂ and H₂S were slower to recover. 1 hour of PM_{2.5} data is also flagged as "analyzer failure" on Nov 23, due to an abnormal data reading.

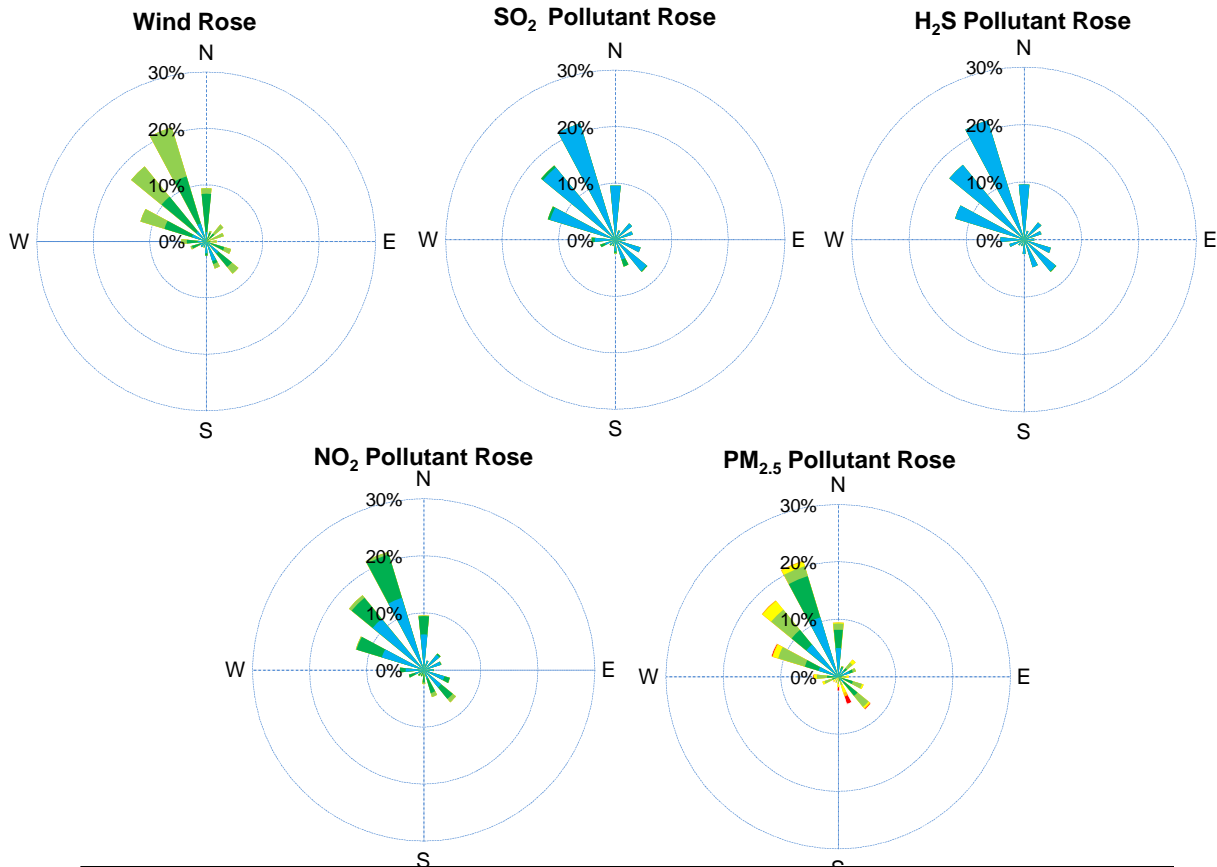
WYAMZ Maidstone Station - November 2014 Summary Report

| Pollutants | | Month Records | | 24-Hour Records | | | | 1-Hour Records | | | |
|-------------------|------------|---------------|--------|-----------------|--------|-----------|-------------|----------------|--------------|-----------|--------------|
| Name | Conc. Unit | Avg. Conc. | Uptime | Maximum | | SAAQS | Exceed Days | Maximum | | SAAQS | Exceed Hours |
| | | | | Conc. | Time | Objective | | Conc. | Time | Objective | |
| NO | ppb | 1.8 | 100.0% | 4.7 | Nov-14 | - | - | 19.5 | Nov-02 13:00 | - | - |
| NO ₂ | ppb | 4.9 | 100.0% | 12.2 | Nov-14 | - | - | 29.1 | Nov-19 23:00 | 212 | 0 |
| NO _x | ppb | 6.7 | 100.0% | 16.8 | Nov-14 | - | - | 35.9 | Nov-19 23:00 | - | - |
| SO ₂ | ppb | 0.2 | 100.0% | 0.6 | Nov-17 | 57 | 0 | 7.5 | Nov-19 22:00 | 172 | 0 |
| H ₂ S | ppb | 0.1 | 100.0% | 0.4 | Nov-20 | 3.6 | 0 | 1.1 | Nov-20 01:00 | 10.8 | 0 |
| PM _{2.5} | ug/m3 | 6 | 100.0% | 14 | Nov-23 | 30 | 0 | 129 | Nov-23 19:00 | - | - |

SAAQS: Saskatchewan Ambient Air Quality Standards



WYAMZ Maidstone Station - November 2014 Summary Report



| Parameters | Unit | Color Code for Wind Spd & Pollutant Conc. Class | | | | | |
|-------------------|-------------------|---|----------------|----------------|-----------------|------------------|-----------|
| Wind Speed | m/s | 0.3 ≤ WS < 1.4 | 1.4 ≤ WS < 3.1 | 3.1 ≤ WS < 7.8 | 7.8 ≤ WS < 10.8 | 10.8 ≤ WS < 13.6 | WS ≥ 13.6 |
| SO ₂ | ppb | 0 ≤ C < 1 | 1 ≤ C < 5 | 5 ≤ C < 10 | 10 ≤ C < 57 | 57 ≤ C < 172 | C ≥ 172 |
| NO ₂ | ppb | 0 ≤ C < 5 | 5 ≤ C < 15 | 15 ≤ C < 30 | 30 ≤ C < 100 | 100 ≤ C < 212 | C ≥ 212 |
| H ₂ S | ppb | 0 ≤ C < 1 | 1 ≤ C < 3.6 | 3.6 ≤ C < 5 | 5 ≤ C < 8 | 8 ≤ C < 10.8 | C ≥ 10.8 |
| PM _{2.5} | ug/m ³ | 0 ≤ C < 2 | 2 ≤ C < 4 | 4 ≤ C < 10 | 10 ≤ C < 20 | 20 ≤ C < 30 | C ≥ 30 |

Monthly Update

*All data has been slope, intercept, and baseline corrected. Data may change after validation process.

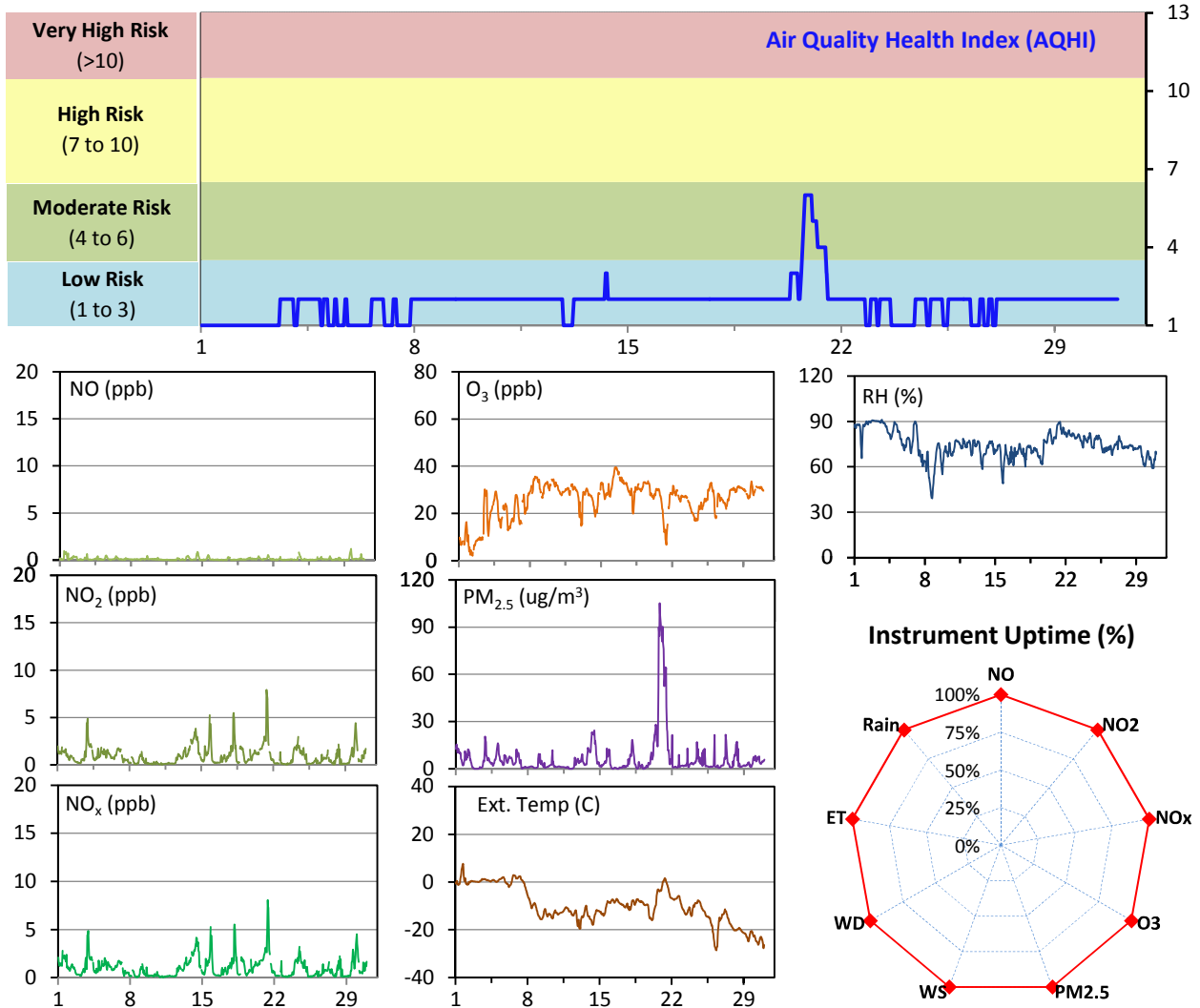
*All compliance parameters were within the Saskatchewan Ambient Air Quality Standards.

*All compliance parameters are above 90% operational. There are no operational issues to report.

WYAMZ Meadow Lake Station - November 2014 Summary Report

| Pollutants | | Month Records | | 24-Hour Records | | | | 1-Hour Records | | | |
|-------------------|------------|---------------|--------|-----------------|--------|-----------------|-------------|----------------|--------------|-----------------|--------------|
| Name | Conc. Unit | Avg. Conc. | Uptime | Maximum | | SAAQS Objective | Exceed Days | Maximum | | SAAQS Objective | Exceed Hours |
| | | | | Conc. | Time | | | Conc. | Time | | |
| NO | ppb | 0.1 | 100.0% | 0.3 | Nov-1 | - | - | 1.2 | Nov-29 15:00 | - | - |
| NO ₂ | ppb | 0.9 | 100.0% | 2.6 | Nov-21 | - | - | 7.9 | Nov-21 08:00 | 212 | 0 |
| NO _x | ppb | 1.0 | 100.0% | 2.7 | Nov-21 | - | - | 8.1 | Nov-21 08:00 | - | - |
| O ₃ | ppb | 26 | 100.0% | 36 | Nov-16 | - | - | 40 | Nov-16 12:00 | 82 | 0 |
| PM _{2.5} | ug/m3 | 7 | 100.0% | 40 | Nov-20 | 30 | 2 | 105 | Nov-20 19:00 | - | - |

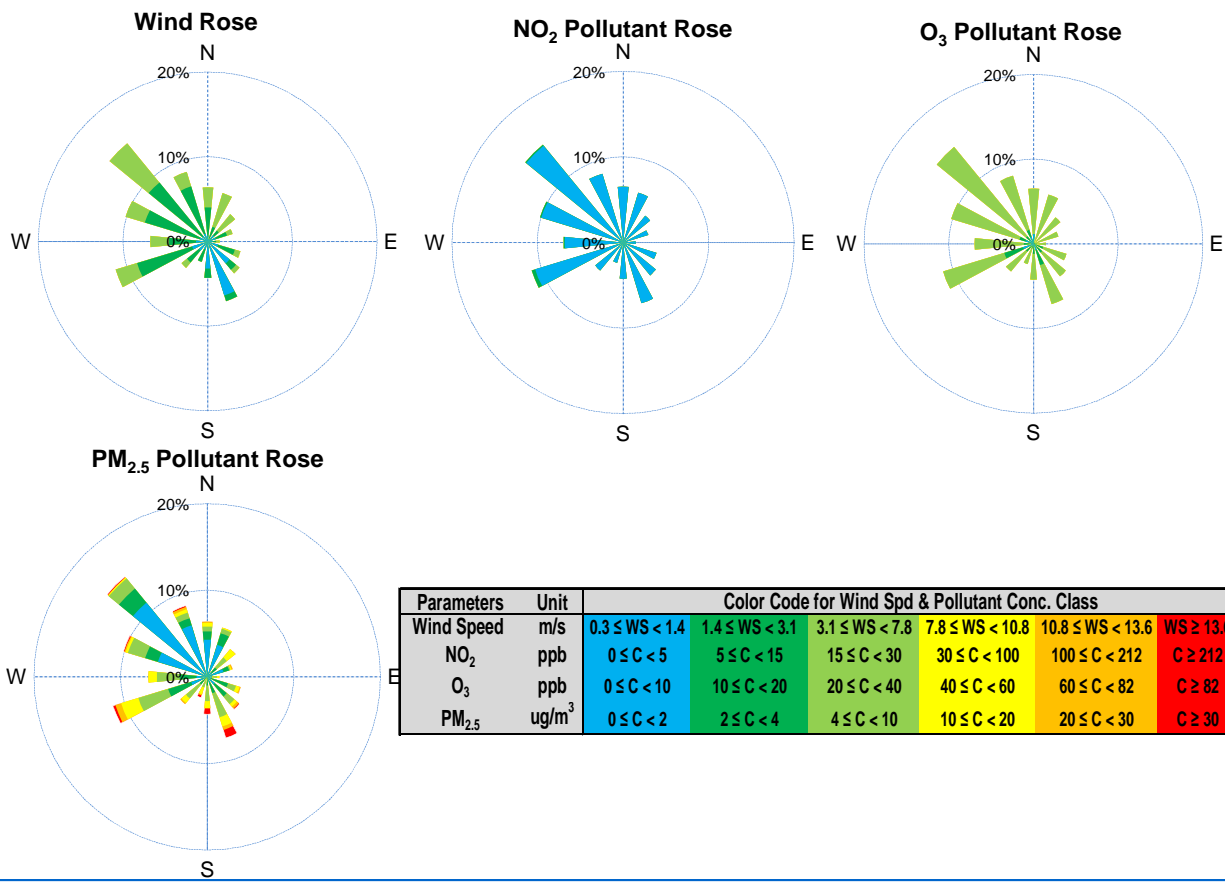
SAAQS: Saskatchewan Ambient Air Quality Standards



Monthly Update

- *All data has been slope, intercept, and baseline corrected. Data may change after validation process.
- *All compliance parameters were within the Saskatchewan Ambient Air Quality Standards, with the exception of two 24-hour PM_{2.5} exceedance events. Please refer to the exceedance summary table for details.
- *All compliance parameters were greater than 90% operational. There are no operational issues to report.

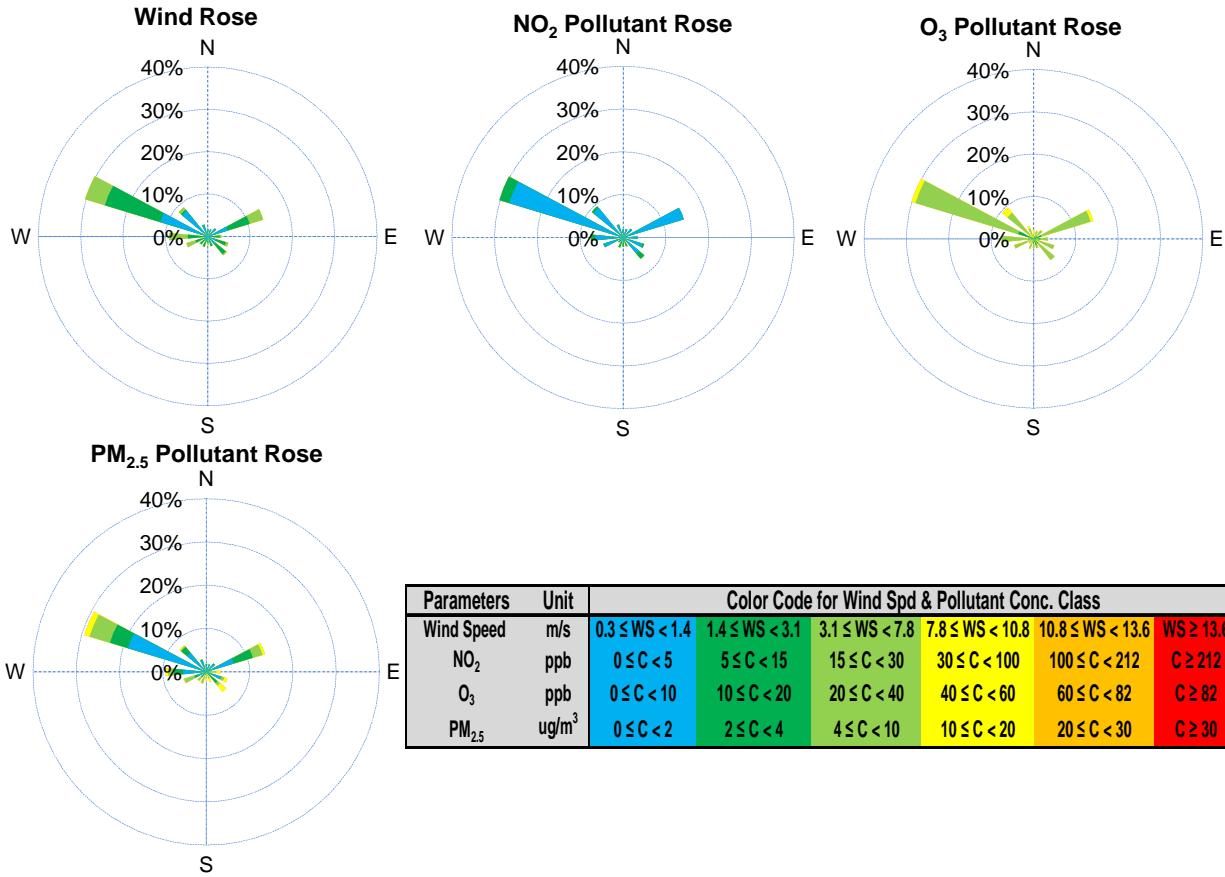
WYAMZ Meadow Lake Station - November 2014 Summary Report



| Parameters | Unit | Color Code for Wind Spd & Pollutant Conc. Class | | | | | |
|-------------------|-------------------|---|----------------|----------------|-----------------|------------------|-----------|
| Wind Speed | m/s | 0.3 ≤ WS < 1.4 | 1.4 ≤ WS < 3.1 | 3.1 ≤ WS < 7.8 | 7.8 ≤ WS < 10.8 | 10.8 ≤ WS < 13.6 | WS ≥ 13.6 |
| NO ₂ | ppb | 0 ≤ C < 5 | 5 ≤ C < 15 | 15 ≤ C < 30 | 30 ≤ C < 100 | 100 ≤ C < 212 | C ≥ 212 |
| O ₃ | ppb | 0 ≤ C < 10 | 10 ≤ C < 20 | 20 ≤ C < 40 | 40 ≤ C < 60 | 60 ≤ C < 82 | C ≥ 82 |
| PM _{2.5} | ug/m ³ | 0 ≤ C < 2 | 2 ≤ C < 4 | 4 ≤ C < 10 | 10 ≤ C < 20 | 20 ≤ C < 30 | C ≥ 30 |

| Exceedance Summary (24-Hour Average) | | | | | | | | | | | |
|--------------------------------------|-----------|---------------------------|-----------|-----------|-----------|------------|-----------|------------|------------|-----------|----------------|
| Pollutant | Conc. ppb | Exceedance Date mmm-dd | WS m/s | WD deg | AQHI - | Rain mm | NO ppb | NO2 ppb | NOx ppb | O3 ppb | PM2.5 ug/m3 |
| 24-hour Exceedance Information | | | | | | | | | | | |
| PM2.5 | 40 | Nov-20 | 1.5 | 154 | 3 | 0.0 | 0 | 1 | 2 | 28 | 40 |
| PM2.5 | 39 | Nov-21 | 2.2 | 201 | 3 | 0.0 | 0 | 3 | 3 | 19 | 39 |

WYAMZ Unity Station - November 2014 Summary Report



| Parameters | Unit | Color Code for Wind Spd & Pollutant Conc. Class | | | | | |
|-------------------|-------------------|---|---------------------|---------------------|----------------------|-----------------------|----------------|
| Wind Speed | m/s | $0.3 \leq WS < 1.4$ | $1.4 \leq WS < 3.1$ | $3.1 \leq WS < 7.8$ | $7.8 \leq WS < 10.8$ | $10.8 \leq WS < 13.6$ | $WS \geq 13.6$ |
| NO ₂ | ppb | $0 \leq C < 5$ | $5 \leq C < 15$ | $15 \leq C < 30$ | $30 \leq C < 100$ | $100 \leq C < 212$ | $C \geq 212$ |
| O ₃ | ppb | $0 \leq C < 10$ | $10 \leq C < 20$ | $20 \leq C < 40$ | $40 \leq C < 60$ | $60 \leq C < 82$ | $C \geq 82$ |
| PM _{2.5} | ug/m ³ | $0 \leq C < 2$ | $2 \leq C < 4$ | $4 \leq C < 10$ | $10 \leq C < 20$ | $20 \leq C < 30$ | $C \geq 30$ |