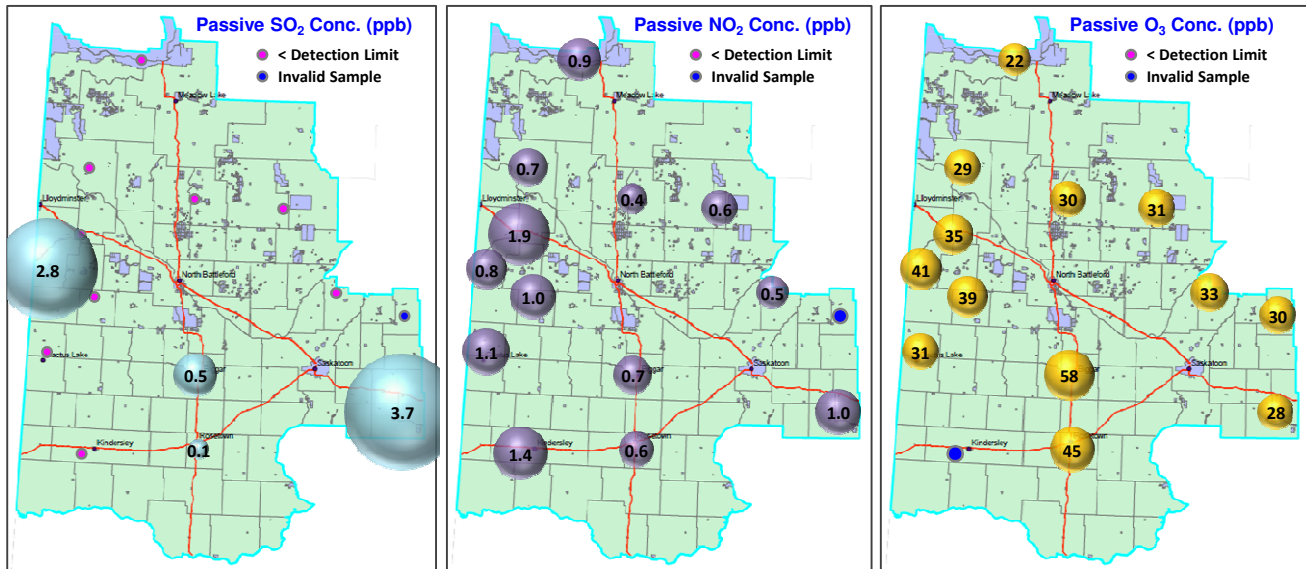


Western Yellowhead Air Management Zone - July 2013 Passive Report



Station No.	Station Name	30-Days Average Concentration			Station Coordinates		
		SO ₂ ppb	NO ₂ ppb	O ₃ ppb	Latitude degree	Longitude degree	Elevation m
1	Young	3.7	1.0	28	51.780	-105.767	522
2	Cudworth	NA	NA	30	52.498	-105.747	583
3	Laird	< 0.1	0.5	33	52.668	-106.496	522
4	Shell Lake	< 0.1	0.6	31	53.294	-107.074	564
5	Cater	< 0.1	0.4	30	53.366	-108.046	719
6	St. Walburg	< 0.1	0.7	29	53.598	-109.200	638
7	Maidstone	< 0.1	1.9	35	53.099	-109.297	728
8	Neilburg	2.8	0.8	41	52.842	-109.657	671
9	Denzil	< 0.1	1.1	31	52.231	-109.663	683
10	Wilbert	< 0.1	1.0	39	52.639	-109.145	675
11	Biggar	0.5	0.7	58	52.056	-108.035	728
13	Dorintosh	< 0.1	0.9	22	54.398	-108.628	486
14	Kindersley	< 0.1	1.4	F	51.475	-109.285	547
15	Rosetown	0.1	0.6	45	51.504	-108.000	611

< : Below Detection Limit
 F : Failure Sample
 - : Sample Not Collected
 NA : Missing sample or no data