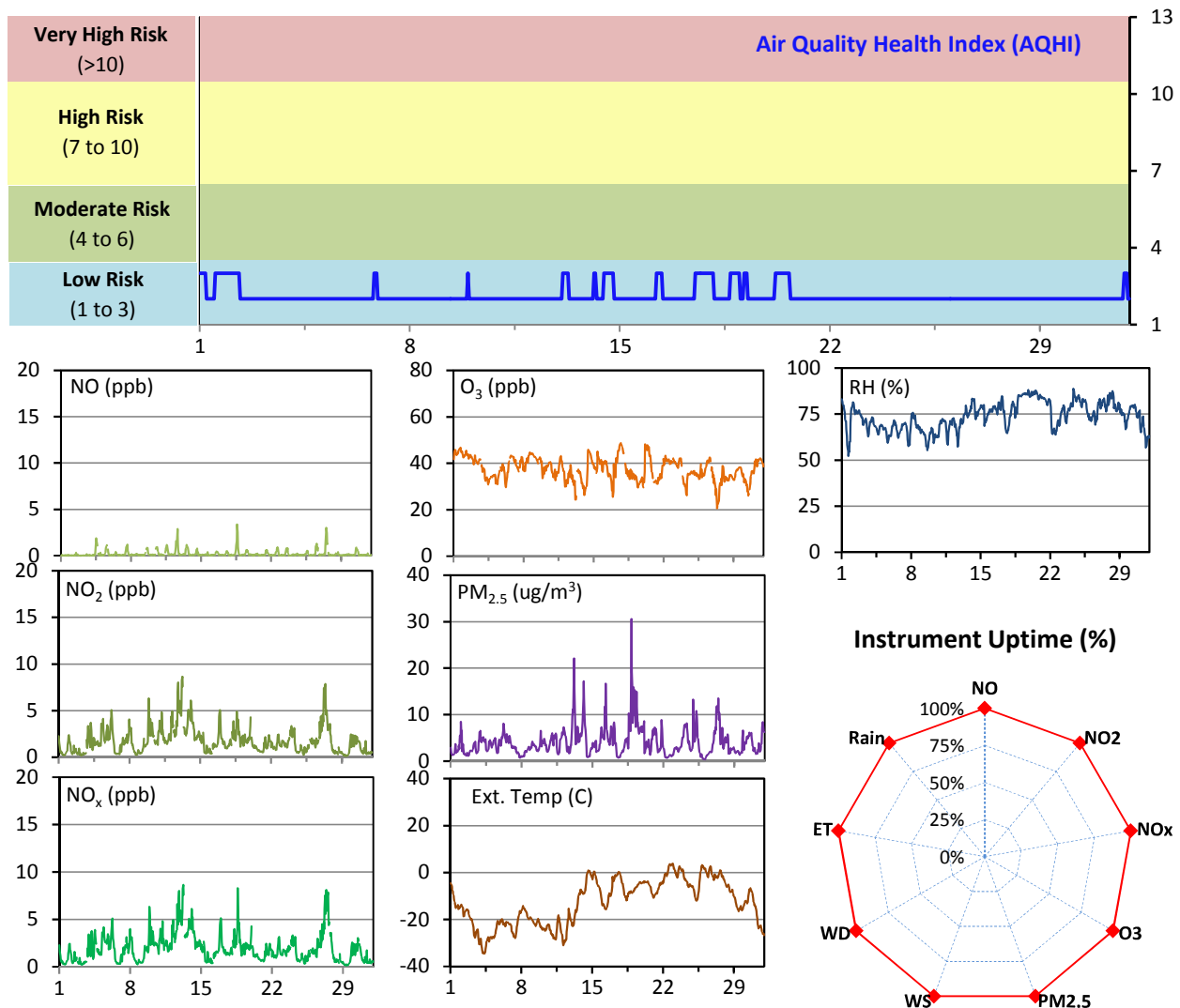


SESAA Esterhazy Station - January 2015 Summary Report

Pollutants		Month Records		24-Hour Records				1-Hour Records			
Name	Conc. Unit	Avg. Conc.	Uptime	Maximum		SAAQS Standard	Exceed Days	Maximum		SAAQS Standard	Exceed Hours
				Conc.	Time			Conc.	Time		
NO	ppb	0.2	100.0%	0.6	Jan-27	-	-	3.4	Jan-18 14:00	-	-
NO ₂	ppb	1.8	100.0%	4.4	Jan-13	-	-	8.7	Jan-13 05:00	212	0
NO _x	ppb	1.9	100.0%	4.9	Jan-27	-	-	8.6	Jan-13 05:00	-	-
O ₃	ppb	37	99.9%	45	Jan-1	-	-	49	Jan-17 17:00	82	0
PM _{2.5}	ug/m3	4	100.0%	9	Jan-19	30	0	31	Jan-18 20:00	-	-

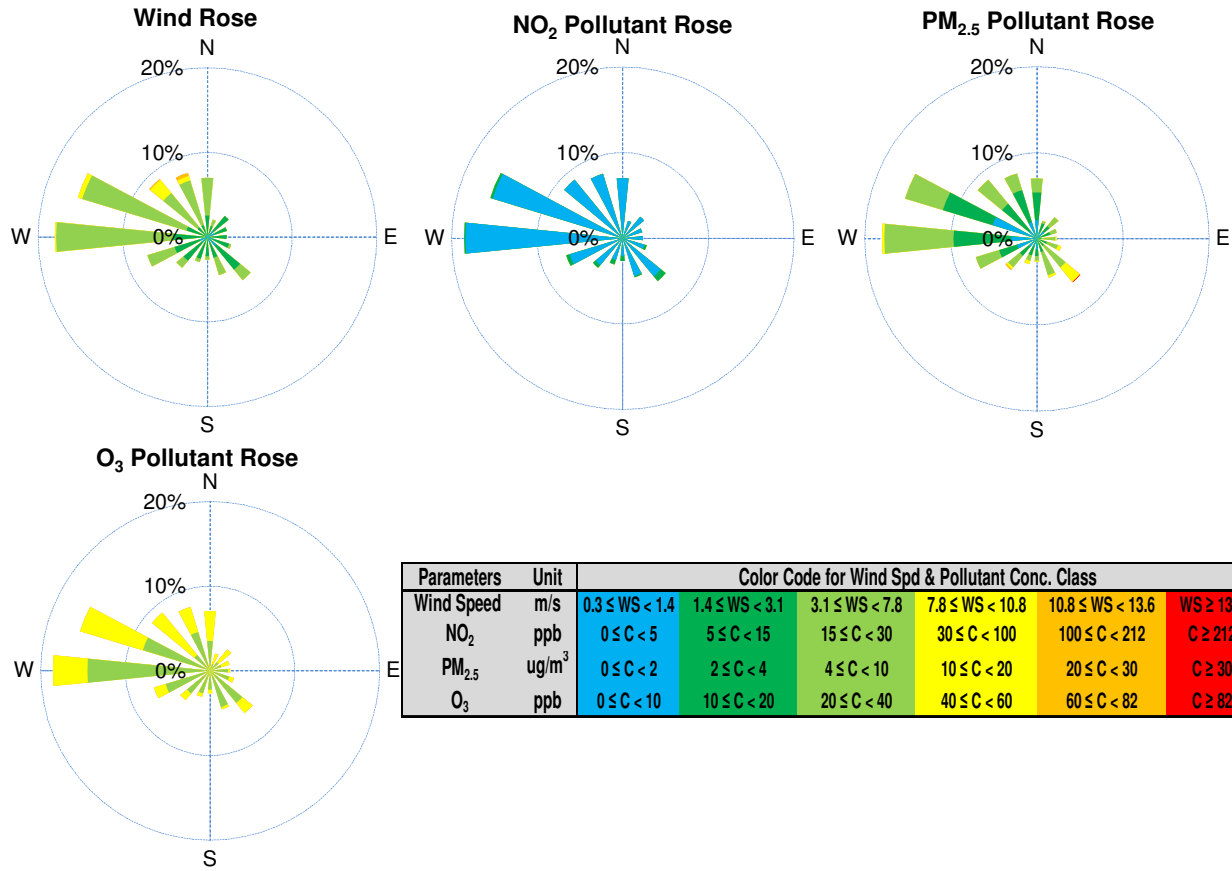
SAAQS: Saskatchewan Ambient Air Quality Standards



Monthly Update

- *All data has been slope, intercept, and baseline corrected. Data may change after validation process.
- *All compliance parameters were within the Saskatchewan Ambient Air Quality Standards.
- *All compliance parameters were above 90% operational.
- *One hour of O₃ data is flagged as "analyzer failure" on Jan 18, due to abnormal data readings.

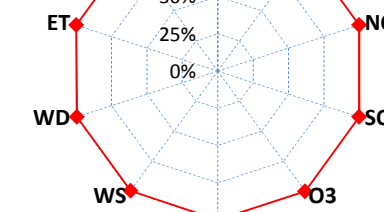
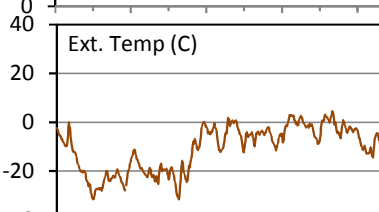
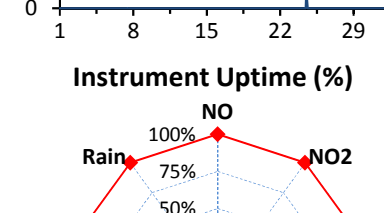
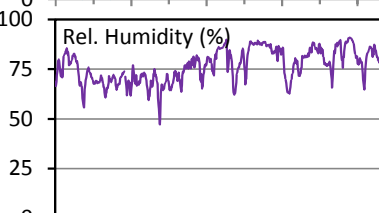
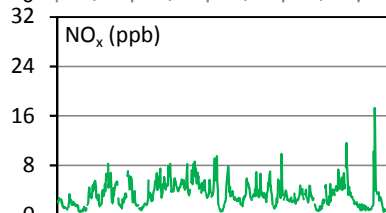
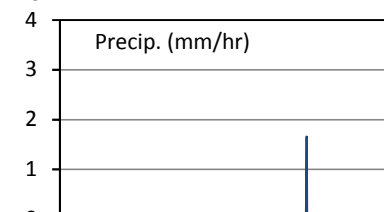
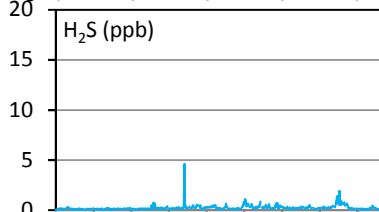
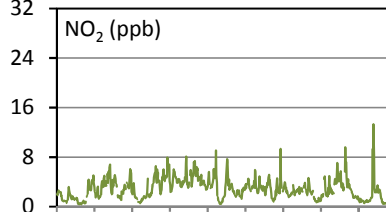
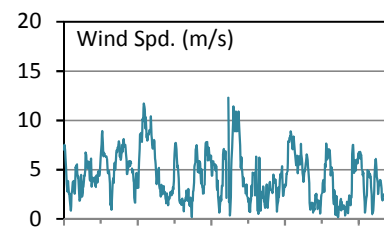
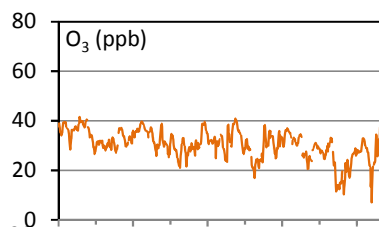
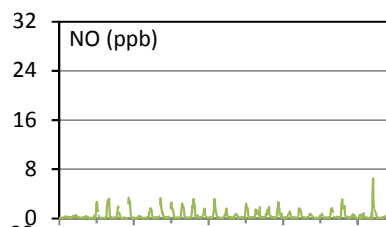
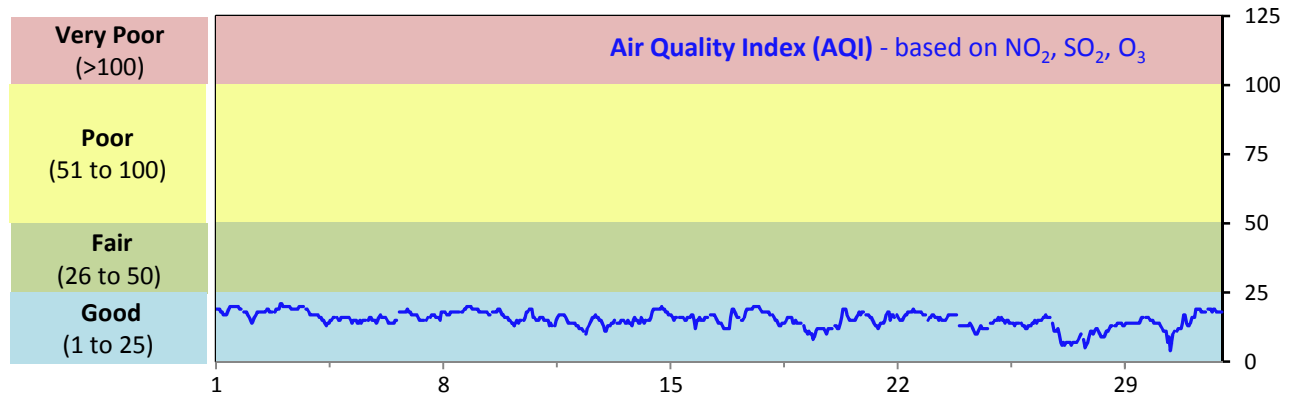
SESAA Esterhazy Station - January 2015 Summary Report



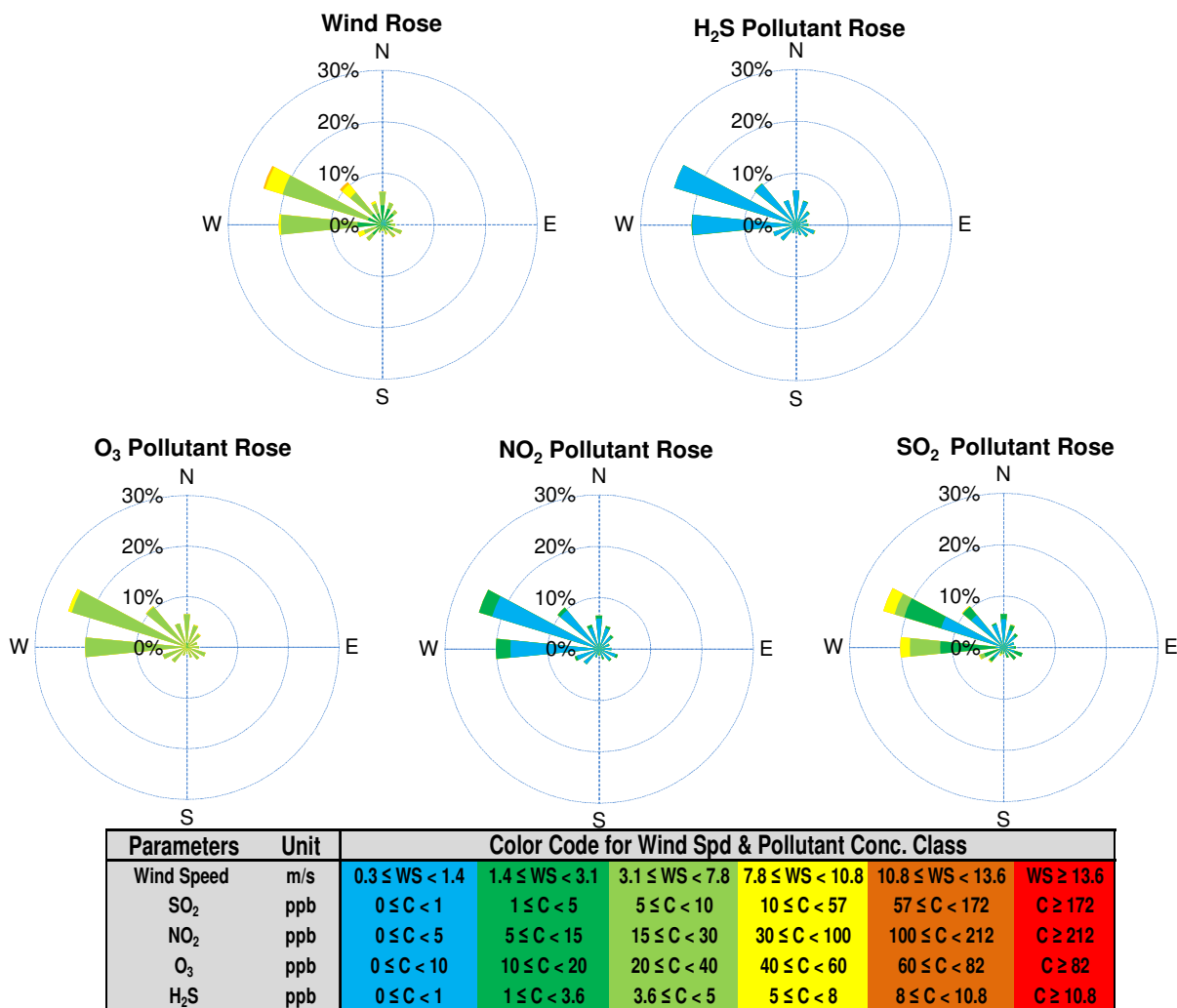
SESAA Glen Ewen Station - January 2015 Summary Report

Pollutants		Month Records		24-Hour Records				1-Hour Records			
Name	Conc. Unit	Avg. Conc.	Uptime	Maximum		SAAQS Standard	Exceed Days	Maximum		SAAQS Standard	Exceed Hours
				Conc.	Time			Conc.	Time		
NO	ppb	0.5	99.9%	0.9	Jan-30	-	-	6.6	Jan-30 10:00	-	-
NO ₂	ppb	2.9	99.9%	5.2	Jan-13	-	-	13.3	Jan-30 09:00	212	0
NO _x	ppb	3.3	99.9%	6.0	Jan-13	-	-	17.3	Jan-30 09:00	-	-
SO ₂	ppb	2.3	99.9%	7.0	Jan-5	57	0	36.0	Jan-18 14:00	172	0
O ₃	ppb	31	99.9%	38	Jan-3	-	-	42	Jan-02 23:00	82	0
H ₂ S	ppb	0.2	99.9%	0.8	Jan-27	3.6	0	5	Jan-12 22:00	10.8	0

SAAQS: Saskatchewan Ambient Air Quality Standards



SESAA Glen Ewen Station - January 2015 Summary Report



Monthly Update

*All data has been slope, intercept, and baseline corrected. Data may change after validation process.

*All compliance parameters were within the Saskatchewan Ambient Air Quality Standards.

*All compliance parameters are above 90% operational.

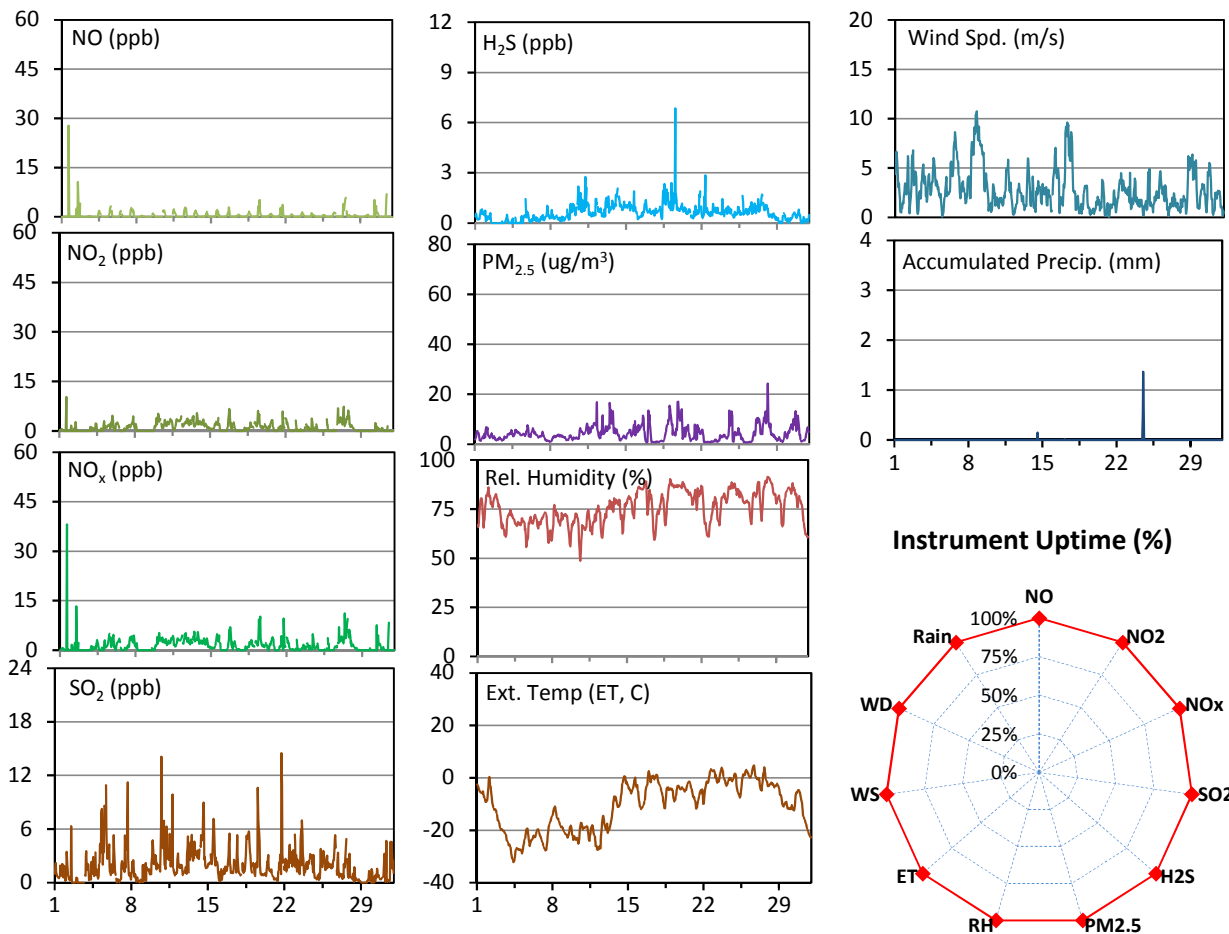
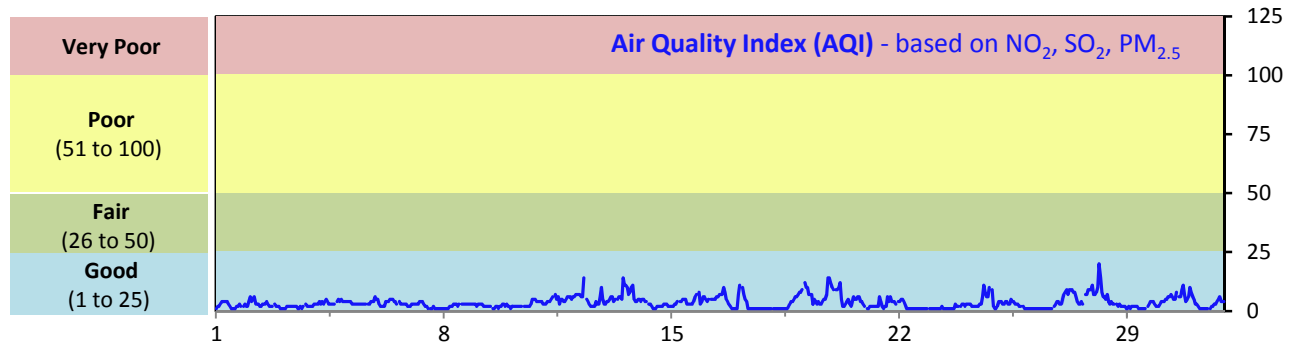
*The wind instrument was malfunctioning on Jan 16, 3 hours of data is flagged as "analyzer failure". This is attributed to adverse weather conditions that caused the wind instrument to freeze up.

*One hour of data for all parameters is flagged as "power failure" on Jan 7 due to a power disruption.

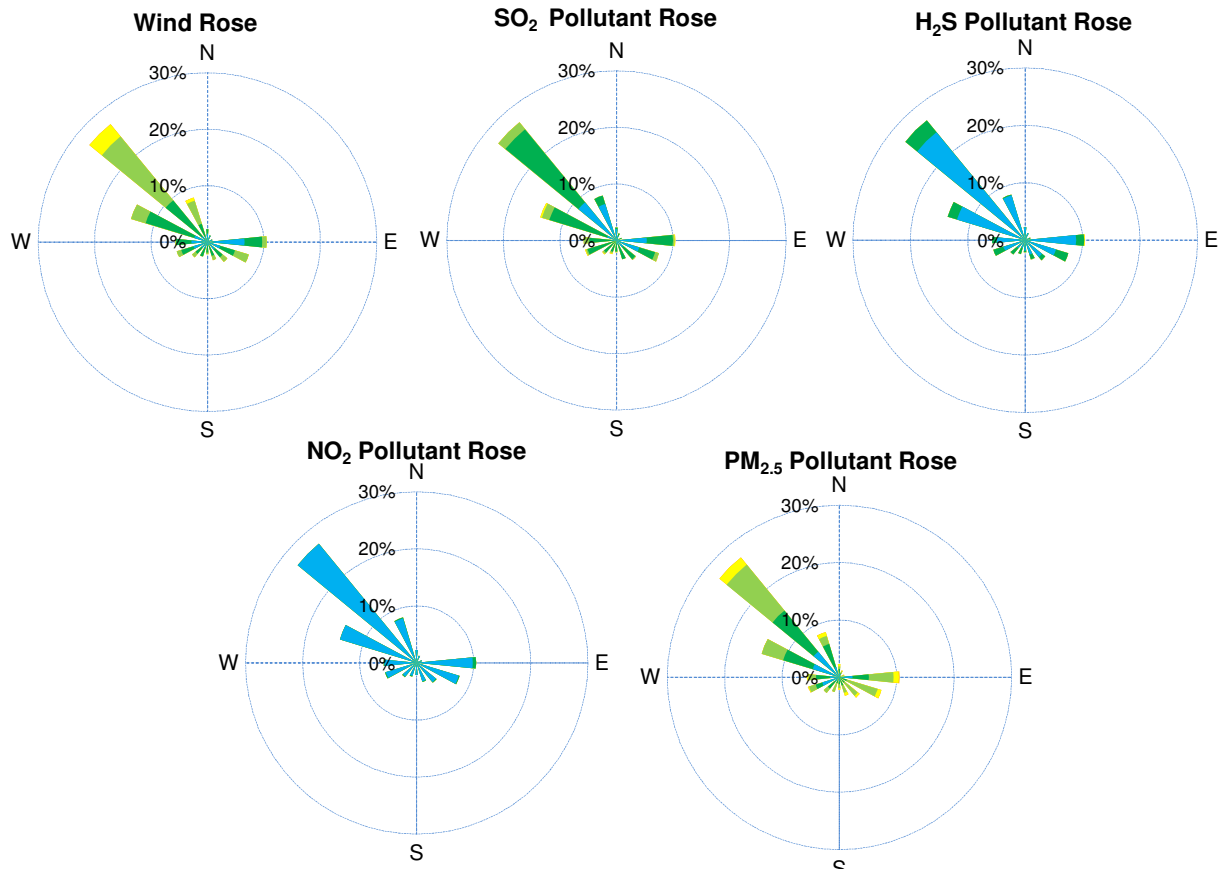
SESAA Oxbow Station - January 2015 Summary Report

Pollutants		Month Records		24-Hour Records				1-Hour Records			
Name	Conc. Unit	Avg. Conc.	Uptime	Maximum		SAAQS Standard	Exceed Days	Maximum		SAAQS Standard	Exceed Hours
				Conc.	Time			Conc.	Time		
NO	ppb	0.4	99.9%	1.3	Jan-27	-	-	27.8	Jan-01 15:00	-	-
NO ₂	ppb	1.1	99.9%	3.4	Jan-27	-	-	10.3	Jan-01 15:00	212	0
NO _x	ppb	1.5	99.9%	4.7	Jan-27	-	-	38.1	Jan-01 15:00	-	-
SO ₂	ppb	2.0	99.9%	4.7	Jan-5	57	0	14.5	Jan-21 17:00	172	0
H ₂ S	ppb	0.6	99.9%	1.4	Jan-19	3.6	0	6.9	Jan-19 13:00	10.8	0
PM _{2.5}	ug/m3	4	99.9%	9	Jan-19	30	0	24	Jan-28 03:00	-	-

SAAQS: Saskatchewan Ambient Air Quality Standards



SESAA Oxbow Station - January 2015 Summary Report



Parameters	Unit	Color Code for Wind Spd & Pollutant Conc. Class						
Wind Speed	m/s	$0.3 \leq WS < 1.4$	$1.4 \leq WS < 3.1$	$3.1 \leq WS < 7.8$	$7.8 \leq WS < 10.8$	$10.8 \leq WS < 13.6$	$WS \geq 13.6$	
SO ₂	ppb	$0 \leq C < 1$	$1 \leq C < 5$	$5 \leq C < 10$	$10 \leq C < 57$	$57 \leq C < 172$	$C \geq 172$	
NO ₂	ppb	$0 \leq C < 5$	$5 \leq C < 15$	$15 \leq C < 30$	$30 \leq C < 100$	$100 \leq C < 212$	$C \geq 212$	
H ₂ S	ppb	$0 \leq C < 1$	$1 \leq C < 3.6$	$3.6 \leq C < 5$	$5 \leq C < 8$	$8 \leq C < 10.8$	$C \geq 10.8$	
PM _{2.5}	ug/m ³	$0 \leq C < 2$	$2 \leq C < 4$	$4 \leq C < 10$	$10 \leq C < 20$	$20 \leq C < 30$	$C \geq 30$	

Monthly Update

*Hourly data was downloaded directly from the airpointer due to communication issues. Data has not been slope/intercept or baseline corrected

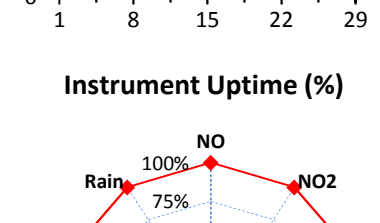
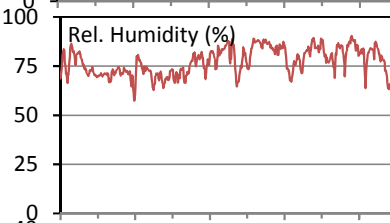
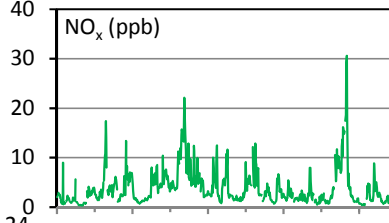
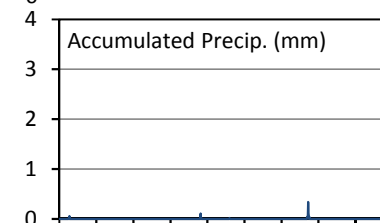
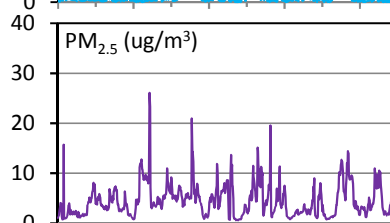
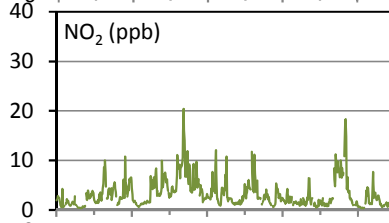
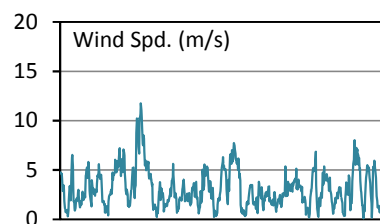
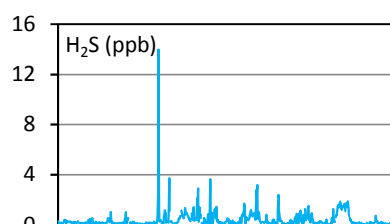
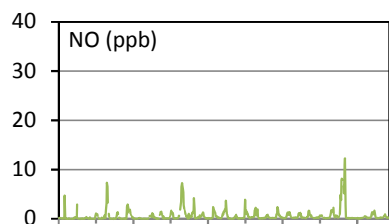
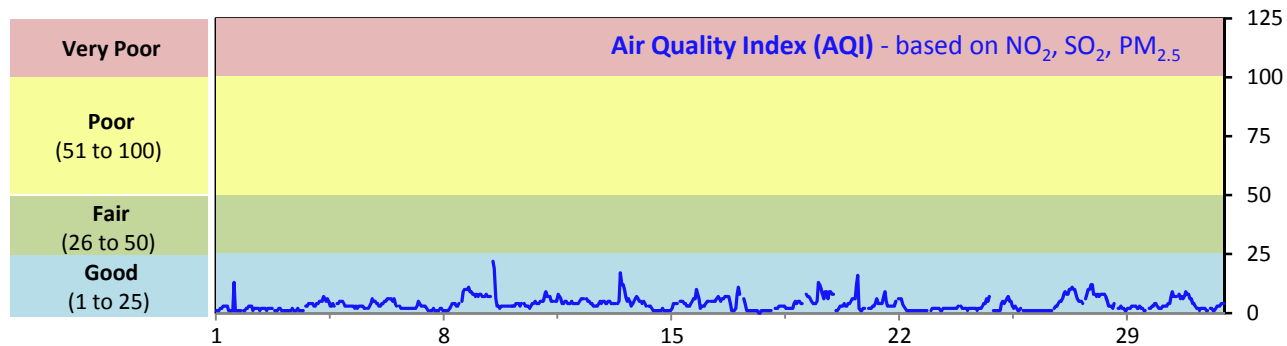
*All compliance parameters were within the Saskatchewan Ambient Air Quality Standard.

*All compliance parameters are above 90% operational. One hour of data is missing on Jan 15, as it was not downloaded.

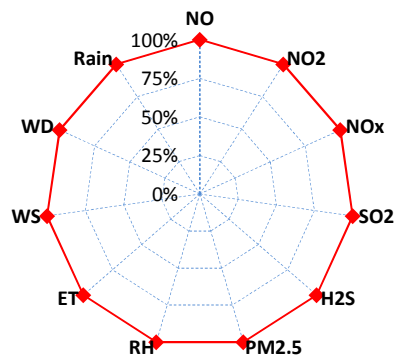
SESAA Stoughton Station - January 2015 Summary Report

Pollutants		Month Records		24-Hour Records				1-Hour Records			
Name	Conc. Unit	Avg. Conc.	Uptime	Maximum		SAAQS Standard	Exceed Days	Maximum		SAAQS Standard	Exceed Hours
				Conc.	Time			Conc.	Time		
NO	ppb	0.6	100.0%	3.7	Jan-27	-	-	12.3	Jan-27 20:00	-	-
NO ₂	ppb	3.2	100.0%	9.3	Jan-12	-	-	20.4	Jan-12 19:00	212	0
NO _x	ppb	3.8	100.0%	12.9	Jan-27	-	-	30.6	Jan-27 20:00	-	-
SO ₂	ppb	0.7	100.0%	2.5	Jan-12	57	0	8.0	Jan-12 19:00	172	0
H ₂ S	ppb	0.4	100.0%	1.5	Jan-27	3.6	0	14.0	Jan-10 07:00	10.8	1
PM _{2.5}	ug/m3	5	100.0%	10	Jan-27	30	0	26	Jan-09 12:00	-	-

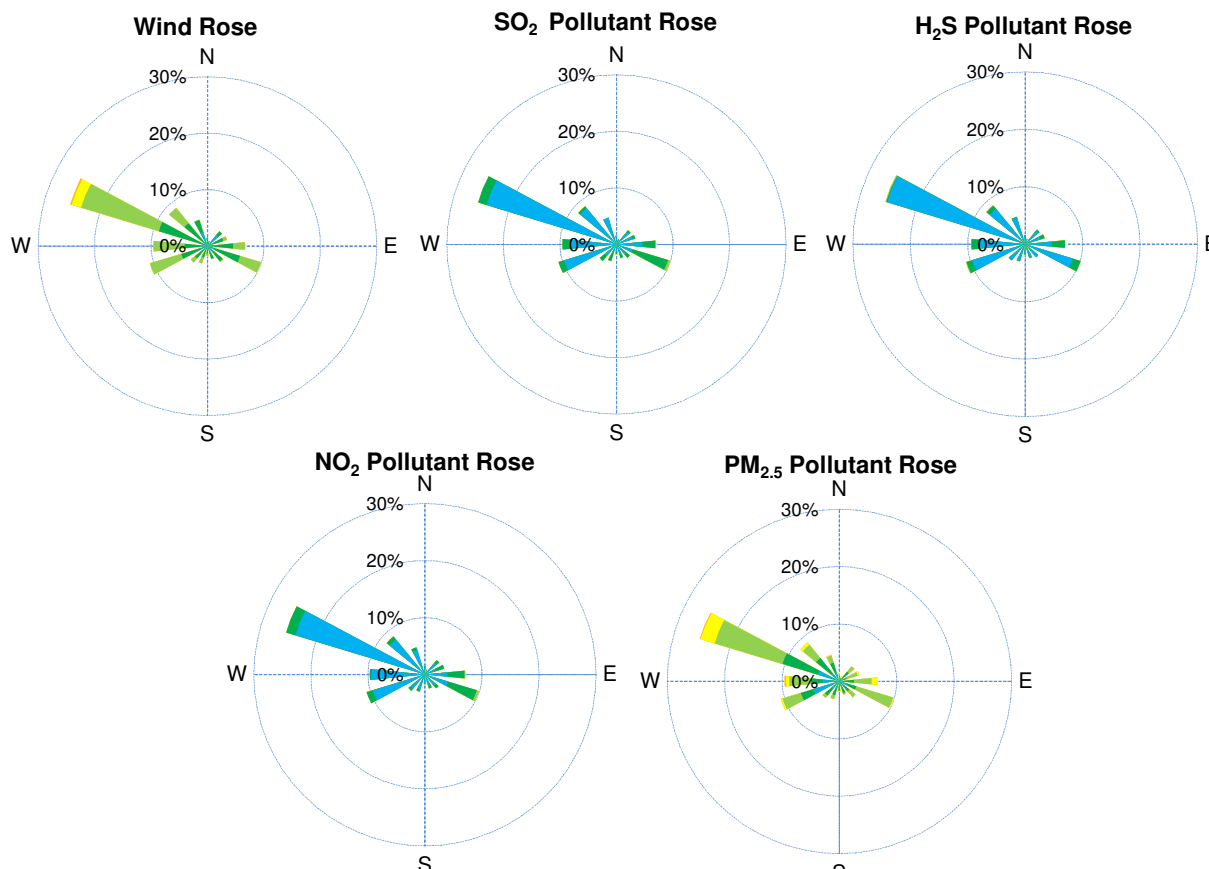
SAAQS: Saskatchewan Ambient Air Quality Standards



Instrument Uptime (%)



SESAA Stoughton Station - January 2015 Summary Report



Parameters	Unit	Color Code for Wind Spd & Pollutant Conc. Class					
Wind Speed	m/s	$0.3 \leq WS < 1.4$	$1.4 \leq WS < 3.1$	$3.1 \leq WS < 7.8$	$7.8 \leq WS < 10.8$	$10.8 \leq WS < 13.6$	$WS \geq 13.6$
SO ₂	ppb	$0 \leq C < 1$	$1 \leq C < 5$	$5 \leq C < 10$	$10 \leq C < 57$	$57 \leq C < 172$	$C \geq 172$
NO ₂	ppb	$0 \leq C < 5$	$5 \leq C < 15$	$15 \leq C < 30$	$30 \leq C < 100$	$100 \leq C < 212$	$C \geq 212$
H ₂ S	ppb	$0 \leq C < 1$	$1 \leq C < 3.6$	$3.6 \leq C < 5$	$5 \leq C < 8$	$8 \leq C < 10.8$	$C \geq 10.8$
PM _{2.5}	ug/m ³	$0 \leq C < 2$	$2 \leq C < 4$	$4 \leq C < 10$	$10 \leq C < 20$	$20 \leq C < 30$	$C \geq 30$

Monthly Update

*All data has been slope, intercept, and baseline corrected. Data may change after validation process.

*All compliance parameters were within the Saskatchewan Ambient Air Quality Standards, with the exception of one 1-hour H₂S exceedance event. Please refer to the exceedance summary table for details.

*All compliance parameters are above 90% operational, there are no operational issues to report.

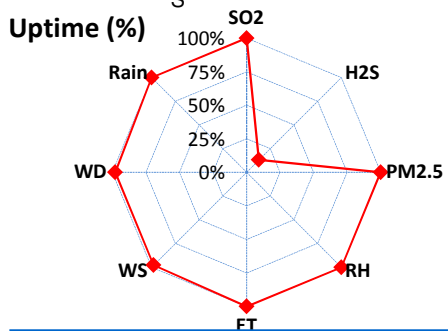
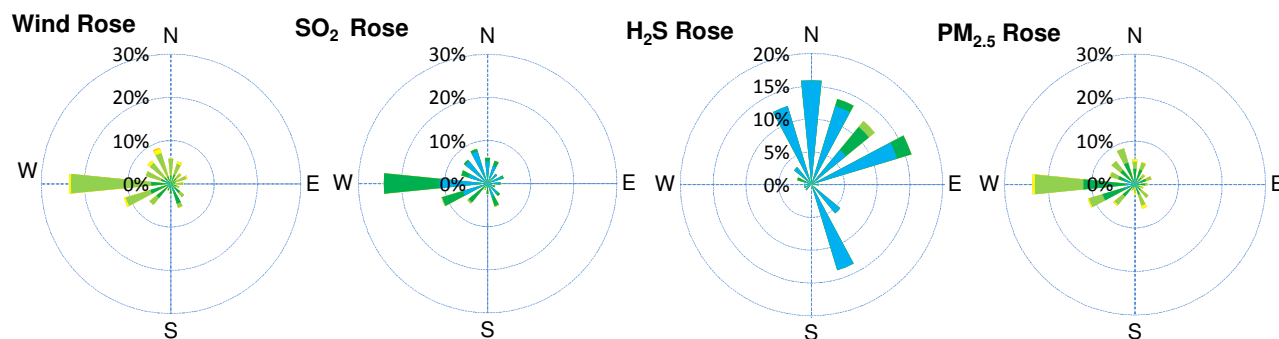
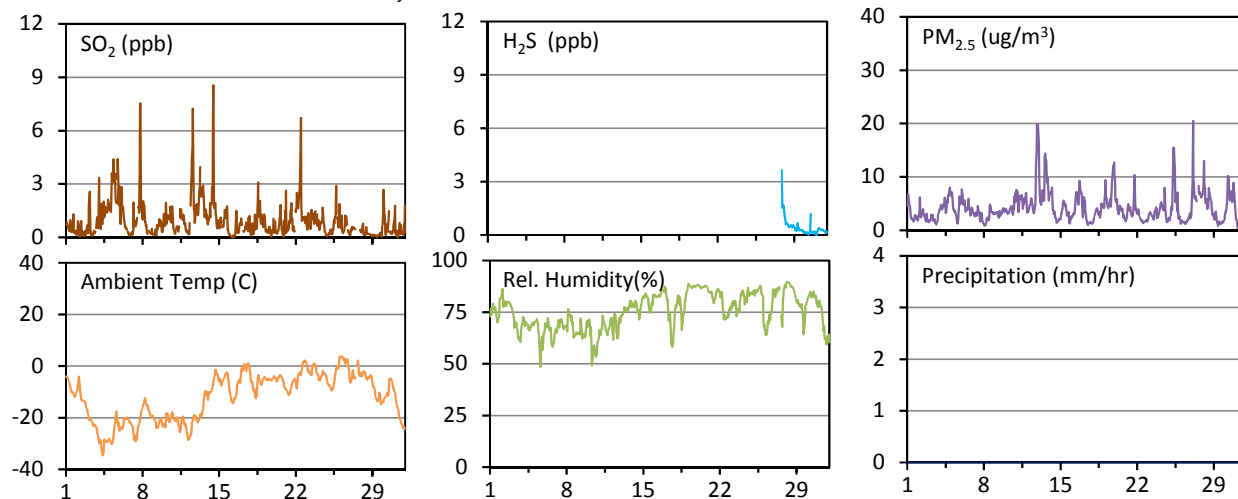
Exceedance Summary (1-Hour Average)

1-hour Exceedance Information			Summary of Other Parameters During Exceedance								
Pollutant (unit)	1-hr Avg Conc.	Exceedance Time mmm-dd hh:mm	WS m/s	WD deg	AQI -	Rain mm	ET C	SO ₂ ppb	NO ₂ ppb	H ₂ S ppb	PM _{2.5} ug/m ³
H ₂ S	14.0	Jan-10 07:00	2.9	314	4	0.0	-26.6	1.0	4.8	14.0	4

SESAA Wauchope Station - January 2015 Summary Report

Pollutants		Month Records		24-Hour Records				1-Hour Records			
Name	Conc. Unit	Avg. Conc.	Uptime	Maximum		SAAQS Objective	Exceed Days	Maximum		SAAQS Objective	Exceed Hours
				Conc.	Time			Conc.	Time		
SO ₂	ppb	0.9	100.0%	2.7	Jan-5	57	0	8.6	Jan-14 11:00	172	0
H ₂ S	ppb	0.4	13.1%	0.7	Jan-28	3.6	0	3.6	Jan-27 20:00	10.8	0
PM _{2.5}	ug/m3	4	100.0%	9	Jan-13	30	0	21	Jan-27 02:00	-	-

SAAQS: Saskatchewan Ambient Air Quality Standards



Parameters	Unit	Color Code for Wind Spd & Pollutant Conc. Class					
Wind Speed	m/s	0.3 ≤ WS < 1.4	1.4 ≤ WS < 3.1	3.1 ≤ WS < 7.8	7.8 ≤ WS < 10.8	10.8 ≤ WS < 13.6	WS ≥ 13.6
SO ₂	ppb	0 ≤ C < 1	1 ≤ C < 5	5 ≤ C < 10	10 ≤ C < 57	57 ≤ C < 172	C ≥ 172
H ₂ S	ppb	0 ≤ C < 1	1 ≤ C < 3.6	3.6 ≤ C < 5	5 ≤ C < 8	8 ≤ C < 10.8	C ≥ 10.8
PM _{2.5}	ug/m ³	0 ≤ C < 2	2 ≤ C < 4	4 ≤ C < 10	10 ≤ C < 20	20 ≤ C < 30	C ≥ 30

Monthly Update

*All data has been slope, intercept, and baseline corrected. Data may change after validation process.

*All compliance parameters were within the Saskatchewan Ambient Air Quality Standards.

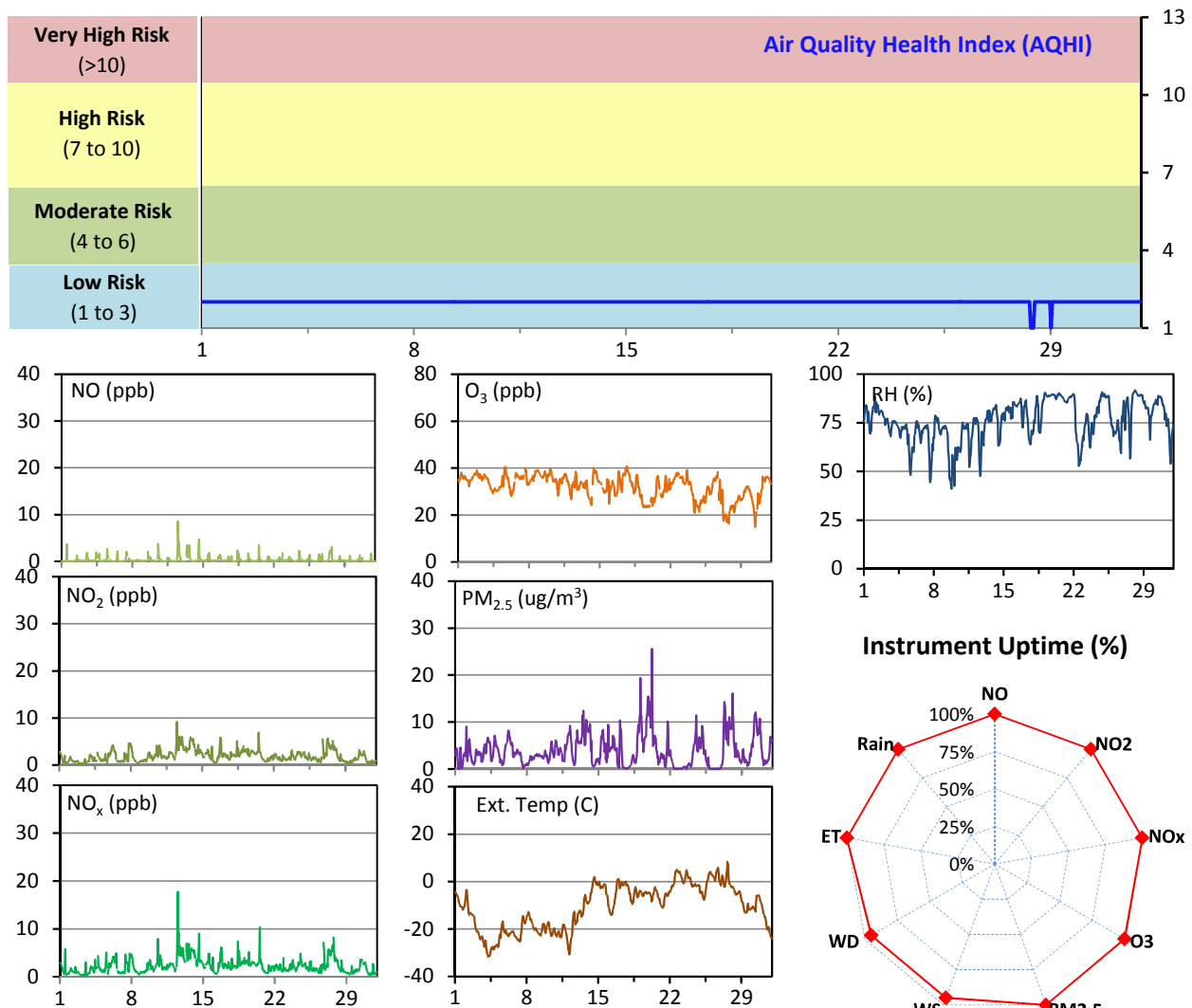
*All compliance parameters were greater than 90% operational this month, with the exception of the H₂S analyzer. The H₂S converter was malfunctioning, it was replaced on January 27, and the analyzer returned to normal operations.

*The WS/WD was intermittently malfunctioning, 16 hours of data is flagged as "analyzer failure" throughout the month. This malfunctioning is attributed to adverse weather conditions that cause the instrument to freeze up.

SESAA Wawota Station - January 2015 Summary Report

Pollutants		Month Records		24-Hour Records				1-Hour Records			
Name	Conc. Unit	Avg. Conc.	Uptime	Maximum		SAAQS Objective	Exceed Days	Maximum		SAAQS Objective	Exceed Hours
				Conc.	Time			Conc.	Time		
NO	ppb	0.3	100.0%	0.7	Jan-13	-	-	8.6	Jan-12 12:00	-	-
NO ₂	ppb	1.9	100.0%	4.1	Jan-13	-	-	9.2	Jan-12 12:00	212	0
NO _x	ppb	2.3	100.0%	4.9	Jan-12	-	-	17.7	Jan-12 12:00	-	-
O ₃	ppb	32	100.0%	37	Jan-17	-	-	41	Jan-17 16:00	82	0
PM _{2.5}	ug/m3	4	100.0%	10	Jan-19	30	0	26	Jan-20 05:00	-	-

SAAQS: Saskatchewan Ambient Air Quality Standards



Monthly Update

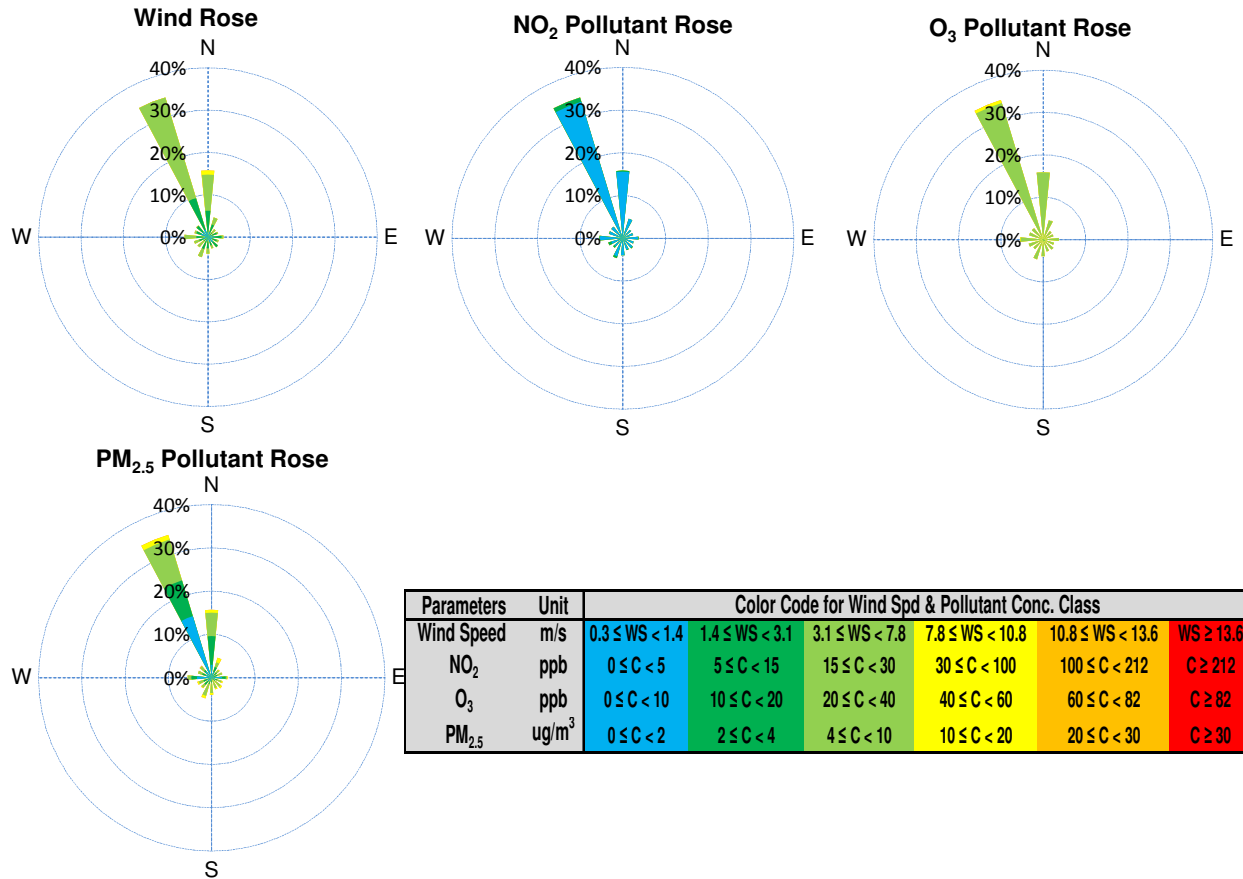
*All data has been slope, intercept, and baseline corrected. Data may change after validation process.

*All compliance parameters were within the Saskatchewan Ambient Air Quality Standards.

*All compliance parameters were greater than 90% operational.

*The wind instrument was intermittently malfunctioning throughout the month, 37 hours is flagged as "analyzer failure". This is attributed to adverse weather conditions causing the instrument to freeze up.

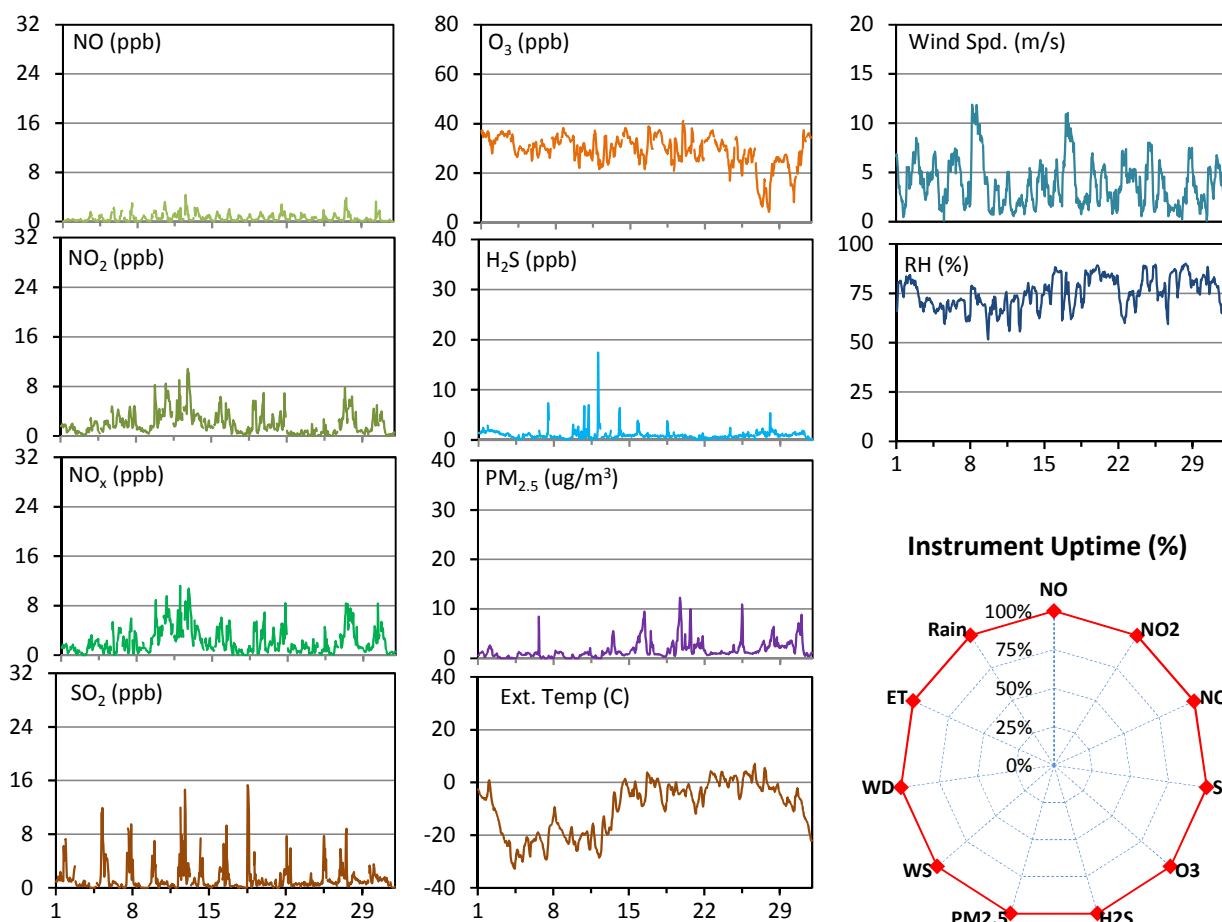
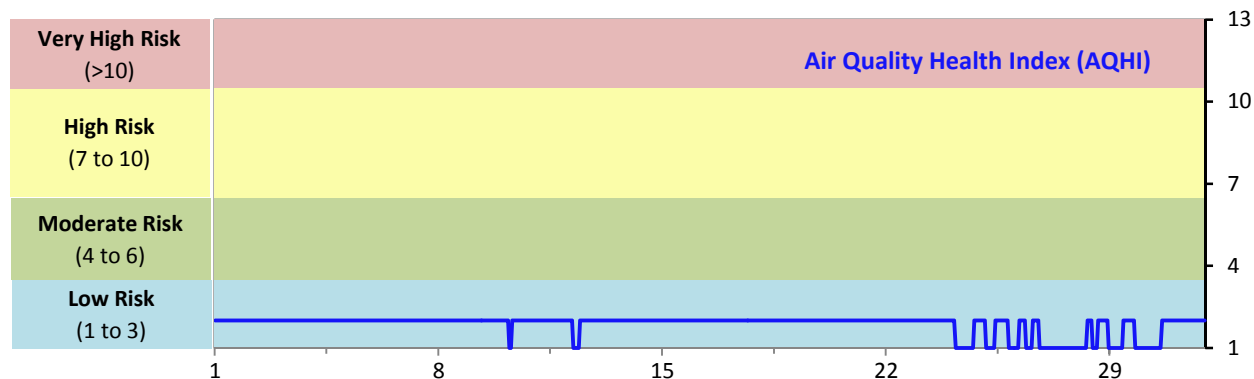
SESAA Wawota Station - January 2015 Summary Report



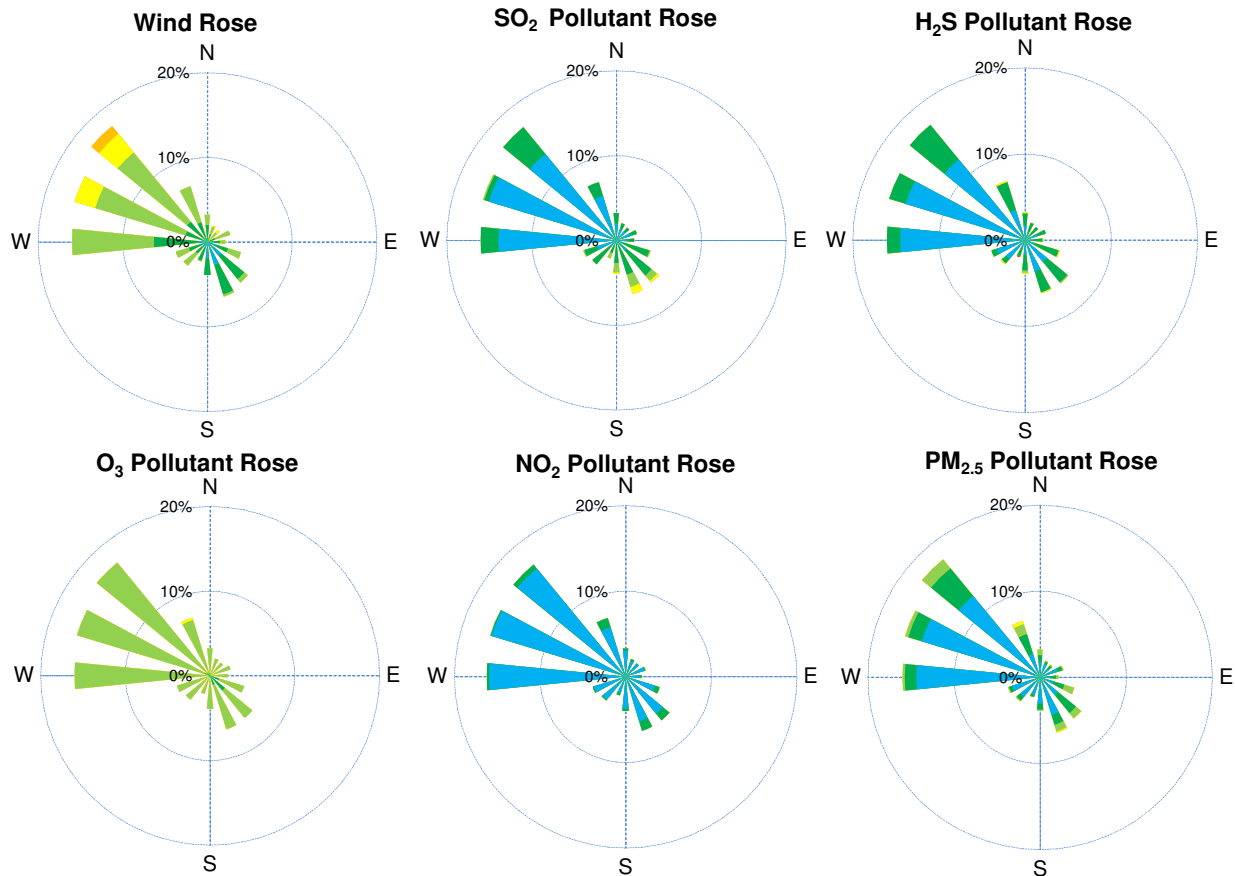
SESAA Weyburn Station - January 2015 Summary Report

Pollutants		Month Records		24-Hour Records				1-Hour Records			
Name	Conc. Unit	Avg. Conc.	Uptime	Maximum		SAAQS Standard	Exceed Days	Maximum		SAAQS Standard	Exceed Hours
				Conc.	Time			Conc.	Time		
NO	ppb	0.6	99.9%	1.2	Jan-27	-	-	4.3	Jan-12 12:00	-	-
NO ₂	ppb	2.0	99.9%	5.7	Jan-12	-	-	10.8	Jan-12 19:00	212	0
NO _x	ppb	2.3	99.9%	6.7	Jan-12	-	-	11.2	Jan-12 00:00	-	-
SO ₂	ppb	1.4	100.0%	4.0	Jan-12	57	0	15.3	Jan-18 12:00	172	0
O ₃	ppb	29	100.0%	35	Jan-3	-	-	41	Jan-19 23:00	82	0
H ₂ S	ppb	1.0	100.0%	2.2	Jan-12	3.6	0	17.5	Jan-12 02:00	10.8	1
PM _{2.5}	ug/m3	2	100.0%	5	Jan-19	30	0	12	Jan-19 17:00	-	-

SAAQS: Saskatchewan Ambient Air Quality Standards



SESAA Weyburn Station - January 2015 Summary Report



Parameters	Unit	Color Code for Wind Spd & Pollutant Conc. Class					
Wind Speed	m/s	$0.3 \leq WS < 1.4$	$1.4 \leq WS < 3.1$	$3.1 \leq WS < 7.8$	$7.8 \leq WS < 10.8$	$10.8 \leq WS < 13.6$	$WS \geq 13.6$
SO ₂	ppb	$0 \leq C < 1$	$1 \leq C < 5$	$5 \leq C < 10$	$10 \leq C < 57$	$57 \leq C < 172$	$C \geq 172$
NO ₂	ppb	$0 \leq C < 5$	$5 \leq C < 15$	$15 \leq C < 30$	$30 \leq C < 100$	$100 \leq C < 212$	$C \geq 212$
O ₃	ppb	$0 \leq C < 10$	$10 \leq C < 20$	$20 \leq C < 40$	$40 \leq C < 60$	$60 \leq C < 82$	$C \geq 82$
H ₂ S	ppb	$0 \leq C < 1$	$1 \leq C < 3.6$	$3.6 \leq C < 5$	$5 \leq C < 8$	$8 \leq C < 10.8$	$C \geq 10.8$
PM _{2.5}	ug/m ³	$0 \leq C < 2$	$2 \leq C < 4$	$4 \leq C < 10$	$10 \leq C < 20$	$20 \leq C < 30$	$C \geq 30$

Monthly Update

*All data has been slope, intercept, and baseline corrected. Data may change after validation process.

*All compliance parameters were within the Saskatchewan Ambient Air Quality Standards, with the exception of one 1-hour H₂S exceedance event. Please refer to the exceedance summary tables for details.

*All compliance parameters are above 90% operational

*One hour of NO/NO₂/NO_x data is flagged as "analyzer failure" on Jan 6 due to abnormal data readings.

Exceedance Summary

1-hour Exceedance Information			Summary of Other Parameters During Exceedance								
Pollutant	Conc. ppb	Exceedance Time mmm-dd hh:mm	WS m/s	WD deg	AQHI -	Rain mm	SO ₂ ppb	NO ₂ ppb	O ₃ ppb	H ₂ S ppb	PM _{2.5} ug/m ³
H ₂ S	17.5	Jan-12 02:00	0.5	202	2	0.0	0.0	6.5	22	17.5	0