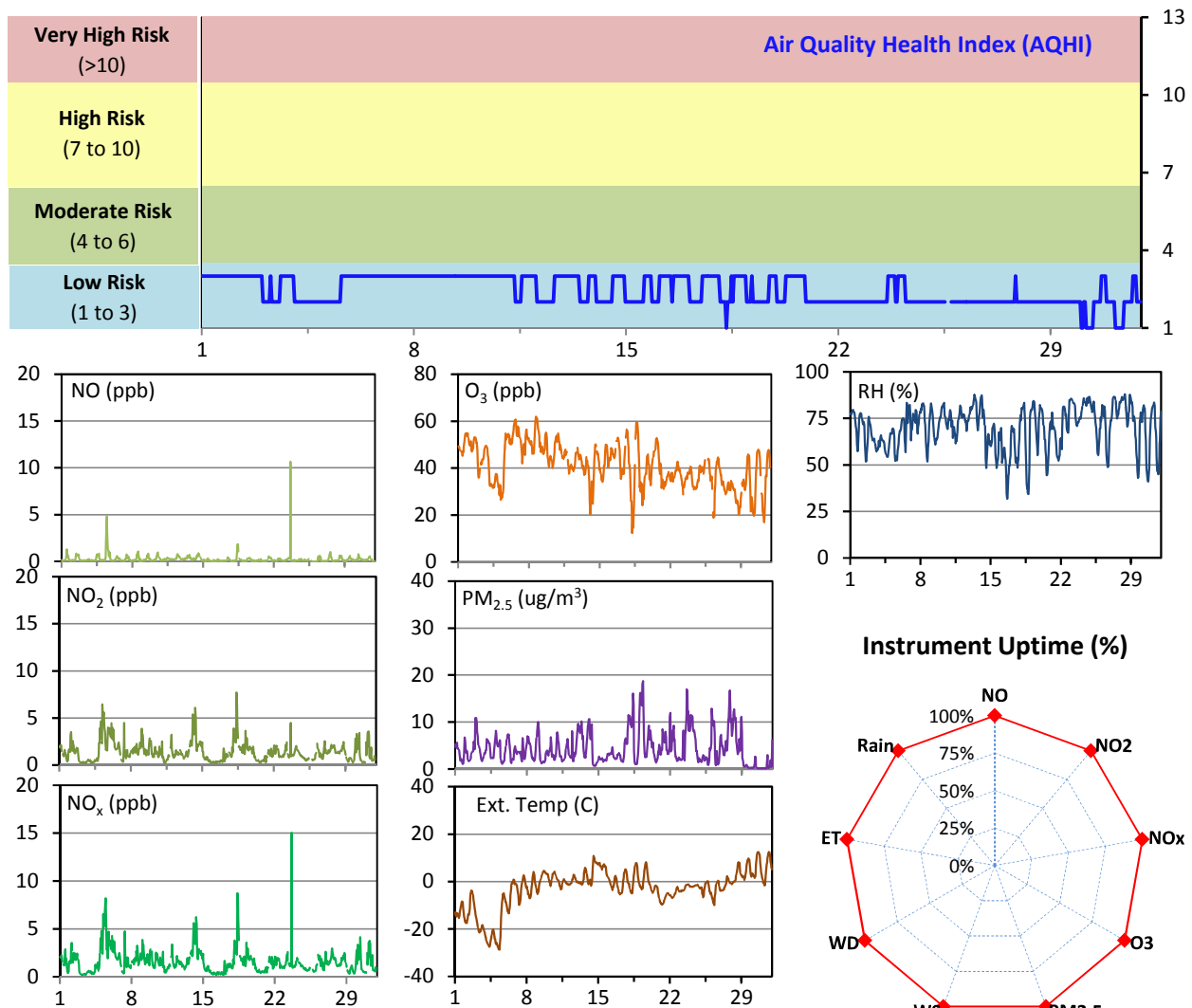


SESAA Esterhazy Station - March 2015 Summary Report

Pollutants		Month Records		24-Hour Records				1-Hour Records			
Name	Conc. Unit	Avg. Conc.	Uptime	Maximum		SAAQS Standard	Exceed Days	Maximum		SAAQS Standard	Exceed Hours
				Conc.	Time			Conc.	Time		
NO	ppb	0.3	100.0%	1.0	Mar-5	-	-	10.7	Mar-23 15:00	-	-
NO ₂	ppb	1.4	100.0%	3.5	Mar-5	-	-	7.7	Mar-18 08:00	212	0
NO _x	ppb	1.6	100.0%	4.3	Mar-5	-	-	15.0	Mar-23 15:00	-	-
O ₃	ppb	41	100.0%	55	Mar-6	-	-	62	Mar-08 16:00	82	0
PM _{2.5}	ug/m3	4	100.0%	9	Mar-19	30	0	19	Mar-19 08:00	-	-

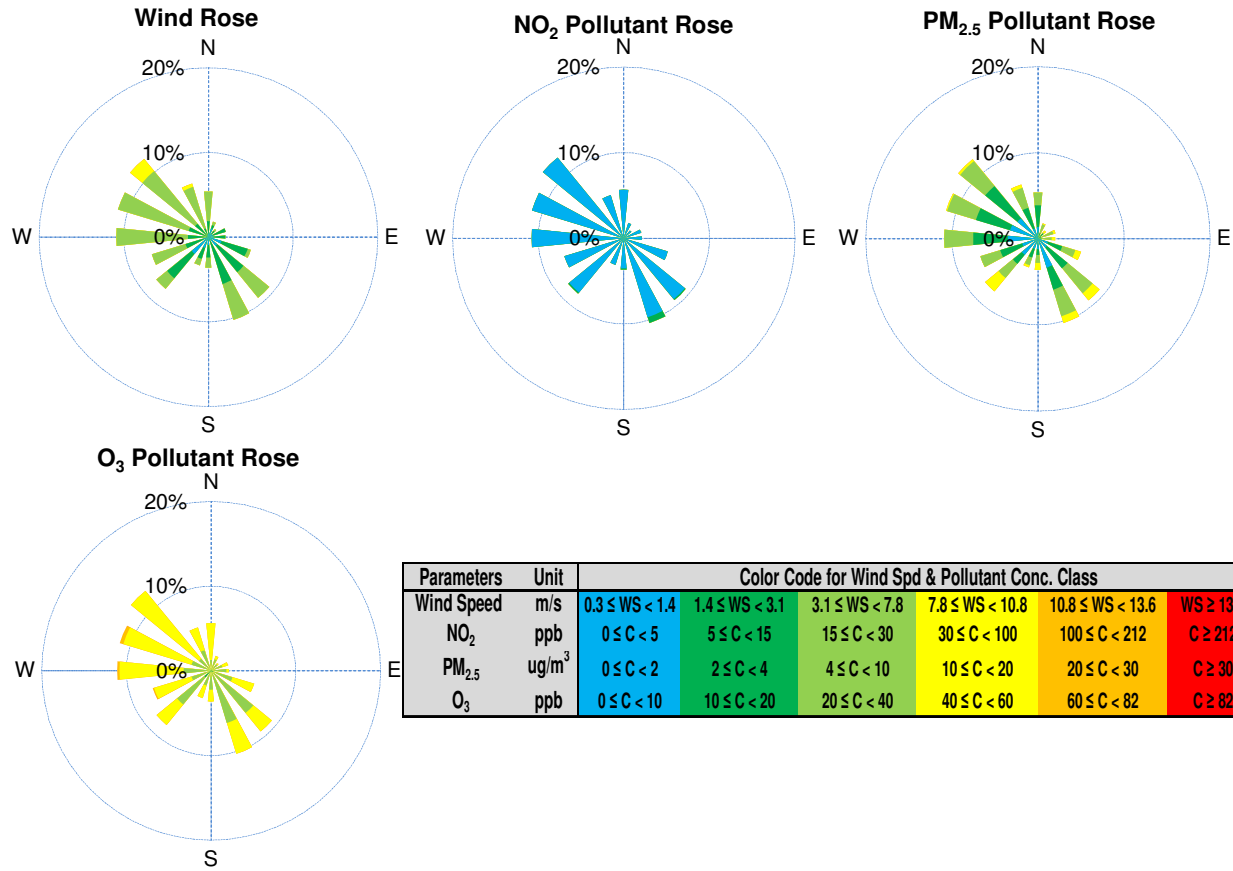
SAAQS: Saskatchewan Ambient Air Quality Standards



Monthly Update

- *All data has been slope, intercept, and baseline corrected. Data may change after validation process.
- *All compliance parameters were within the Saskatchewan Ambient Air Quality Standards.
- *All compliance parameters were above 90% operational, there are no operational issues to report.
- *Routine quarterly calibrations took place on March 25.

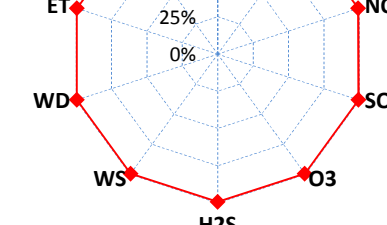
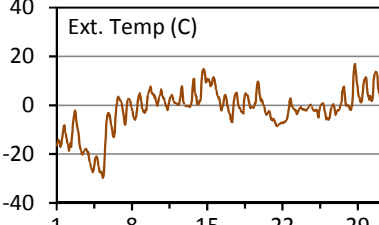
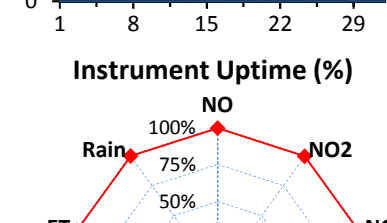
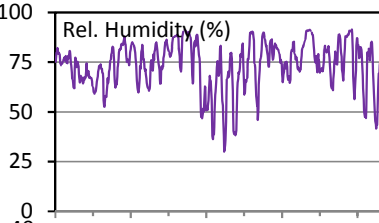
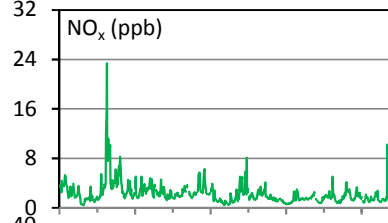
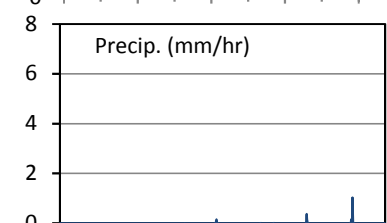
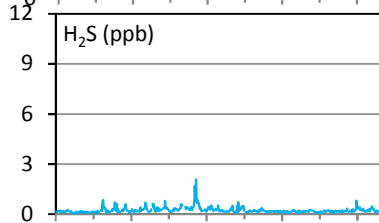
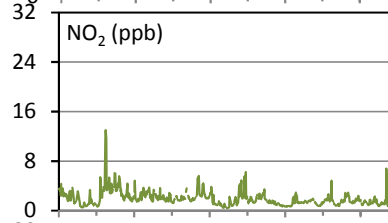
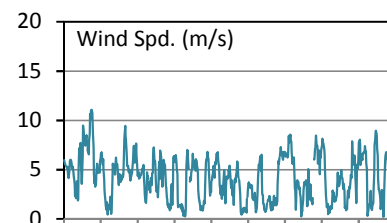
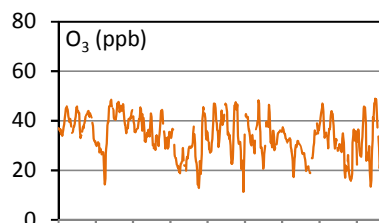
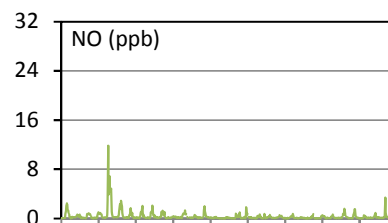
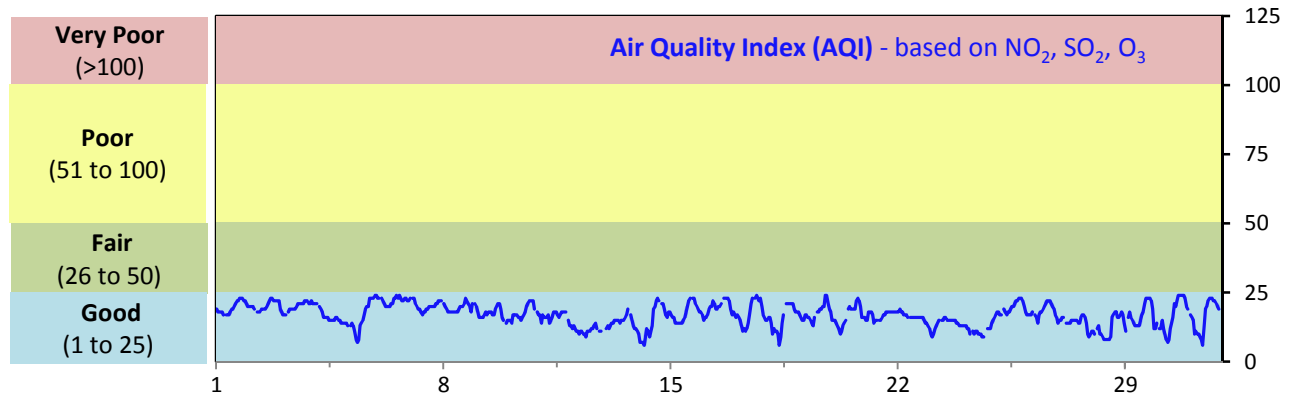
SESAA Esterhazy Station - March 2015 Summary Report



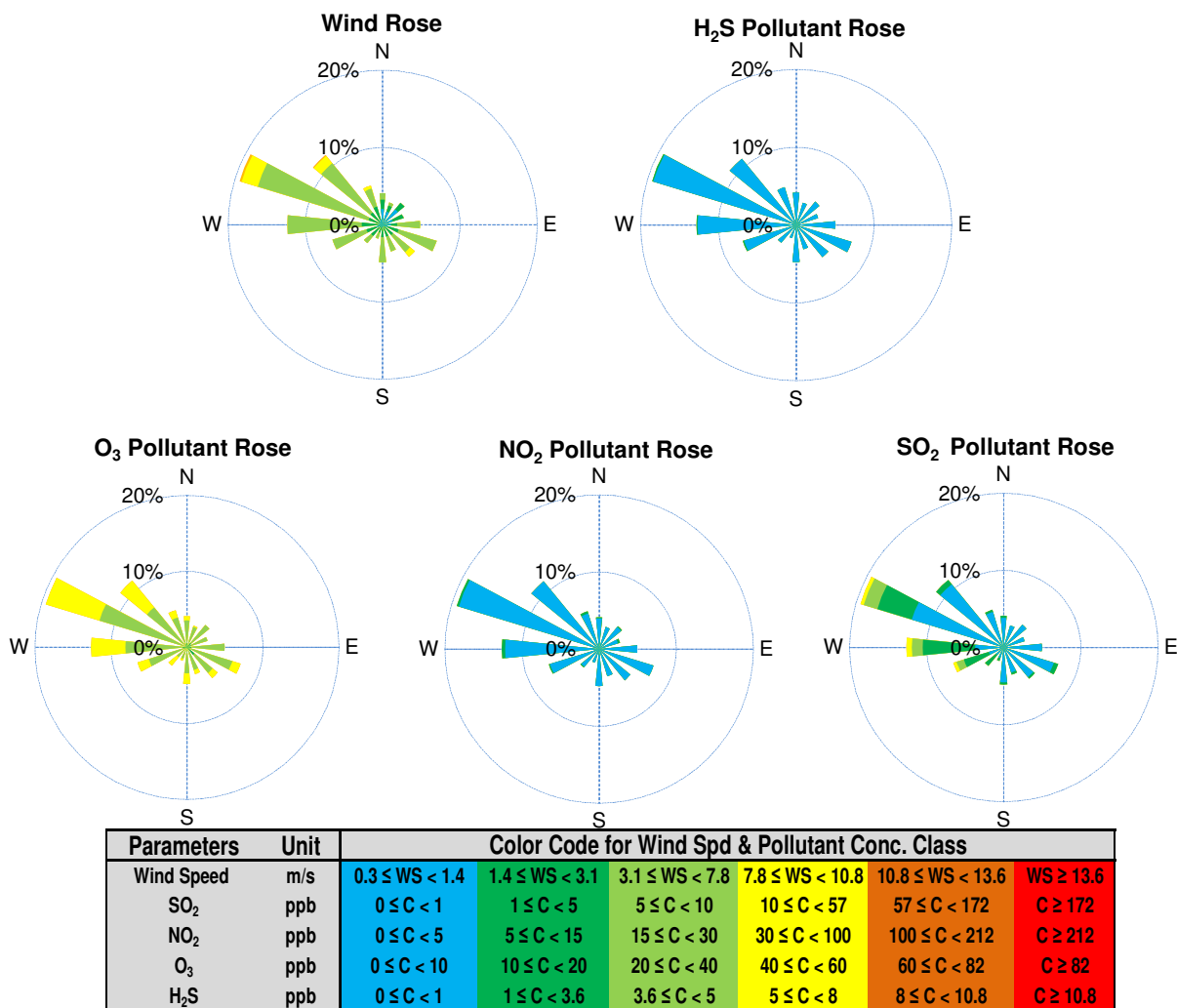
SESAA Glen Ewen Station - March 2015 Summary Report

Pollutants		Month Records		24-Hour Records				1-Hour Records			
Name	Conc. Unit	Avg. Conc.	Uptime	Maximum		SAAQS Standard	Exceed Days	Maximum		SAAQS Standard	Exceed Hours
				Conc.	Time			Conc.	Time		
NO	ppb	0.4	99.3%	2.3	Mar-5	-	-	11.9	Mar-05 09:00	-	-
NO ₂	ppb	1.9	99.3%	4.6	Mar-5	-	-	13.0	Mar-05 08:00	212	0
NO _x	ppb	2.2	99.3%	6.8	Mar-5	-	-	23.4	Mar-05 09:00	-	-
SO ₂	ppb	1.2	99.4%	5.6	Mar-1	57	0	22.6	Mar-01 13:00	172	0
O ₃	ppb	34	99.4%	44	Mar-6	-	-	49	Mar-30 17:00	82	0
H ₂ S	ppb	0.2	99.3%	0.5	Mar-13	3.6	0	2	Mar-14 00:00	10.8	0

SAAQS: Saskatchewan Ambient Air Quality Standards



SESAA Glen Ewen Station - March 2015 Summary Report



Monthly Update

*All data has been slope, intercept, and baseline corrected. Data may change after validation process.

*All compliance parameters were within the Saskatchewan Ambient Air Quality Standards.

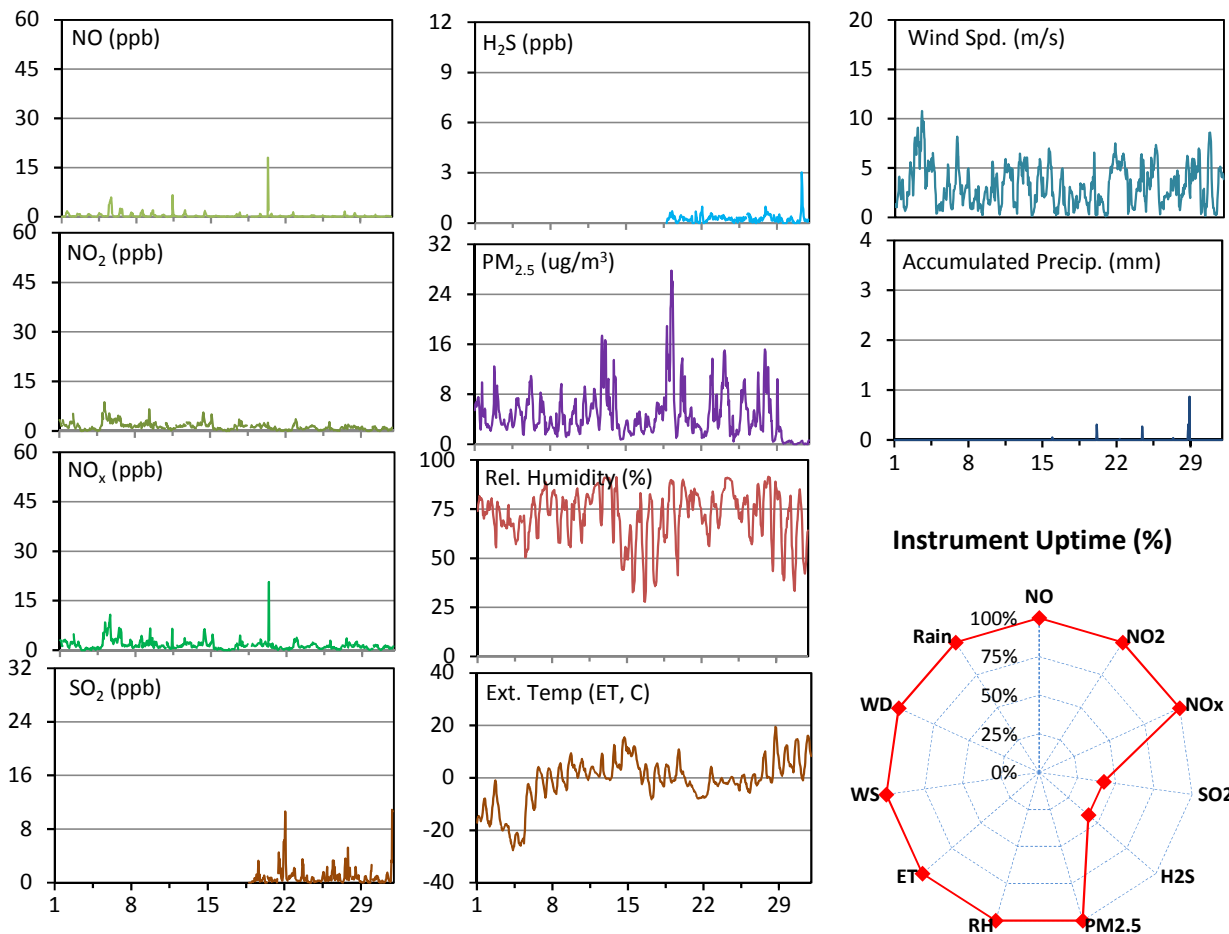
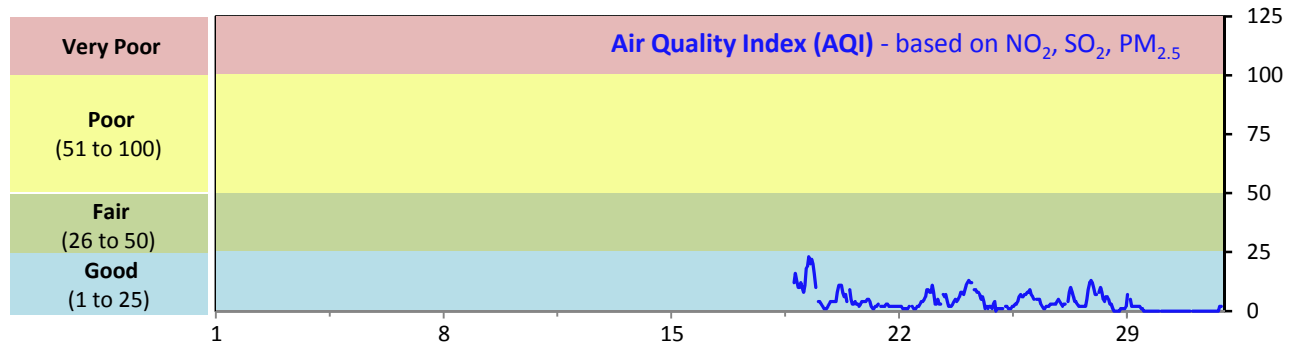
*All compliance parameters are above 90% operational.

*5 hours of NO/NO₂/NO_x and H₂S data, and 4 hours for all other parameters is flagged as "power failure" throughout the month, due to intermittent power disruptions.

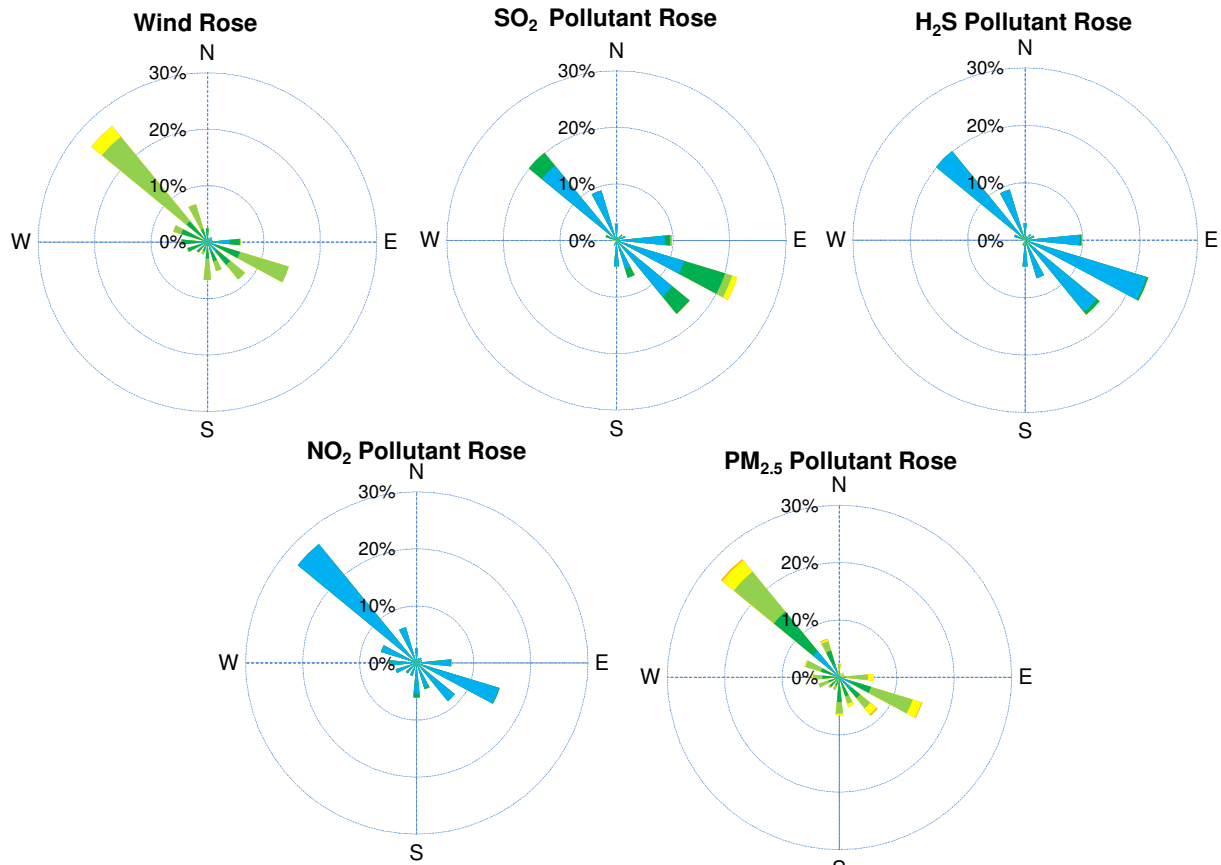
SESAA Oxbow Station - March 2015 Summary Report

Pollutants		Month Records		24-Hour Records				1-Hour Records			
Name	Conc. Unit	Avg. Conc.	Uptime	Maximum		SAAQS Standard	Exceed Days	Maximum		SAAQS Standard	Exceed Hours
				Conc.	Time			Conc.	Time		
NO	ppb	0.3	100.0%	1.6	Mar-5	-	-	18.0	Mar-20 08:00	-	-
NO ₂	ppb	1.3	100.0%	4.2	Mar-5	-	-	8.7	Mar-05 04:00	212	0
NO _x	ppb	1.5	100.0%	5.4	Mar-5	-	-	20.7	Mar-20 08:00	-	-
SO ₂	ppb	0.9	42.1%	2.0	Mar-22	57	0	10.9	Mar-31 20:00	172	0
H ₂ S	ppb	0.3	42.1%	0.5	Mar-31	3.6	0	3	Mar-31 07:00	10.8	0
PM _{2.5}	ug/m3	5	100.0%	11	Mar-19	30	0	28	Mar-19 05:00	-	-

SAAQS: Saskatchewan Ambient Air Quality Standards



SESAA Oxbow Station - March 2015 Summary Report



Parameters	Unit	Color Code for Wind Spd & Pollutant Conc. Class						
Wind Speed	m/s	$0.3 \leq WS < 1.4$	$1.4 \leq WS < 3.1$	$3.1 \leq WS < 7.8$	$7.8 \leq WS < 10.8$	$10.8 \leq WS < 13.6$	$WS \geq 13.6$	
SO ₂	ppb	$0 \leq C < 1$	$1 \leq C < 5$	$5 \leq C < 10$	$10 \leq C < 57$	$57 \leq C < 172$	$C \geq 172$	
NO ₂	ppb	$0 \leq C < 5$	$5 \leq C < 15$	$15 \leq C < 30$	$30 \leq C < 100$	$100 \leq C < 212$	$C \geq 212$	
H ₂ S	ppb	$0 \leq C < 1$	$1 \leq C < 3.6$	$3.6 \leq C < 5$	$5 \leq C < 8$	$8 \leq C < 10.8$	$C \geq 10.8$	
PM _{2.5}	ug/m ³	$0 \leq C < 2$	$2 \leq C < 4$	$4 \leq C < 10$	$10 \leq C < 20$	$20 \leq C < 30$	$C \geq 30$	

Monthly Update

*All data has been slope, intercept, and baseline corrected. Data may change after validation process.

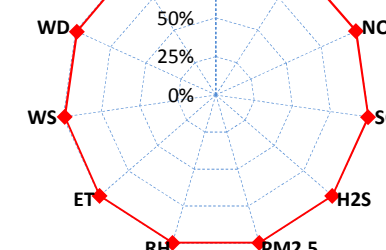
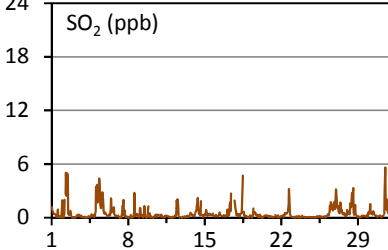
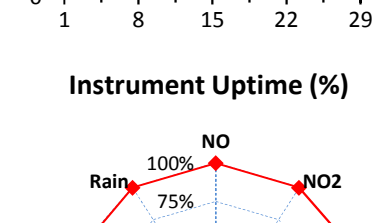
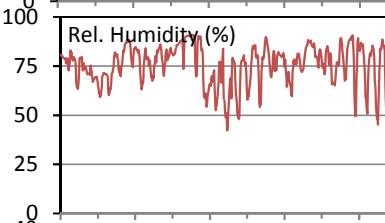
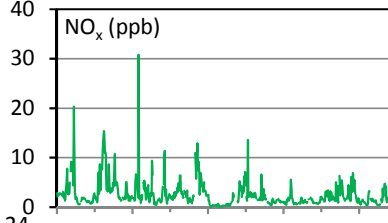
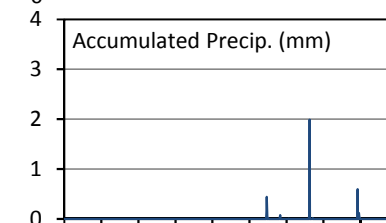
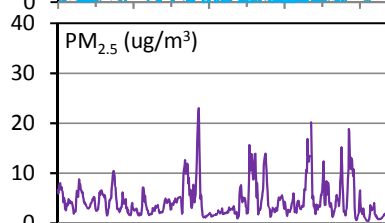
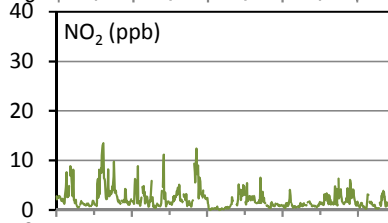
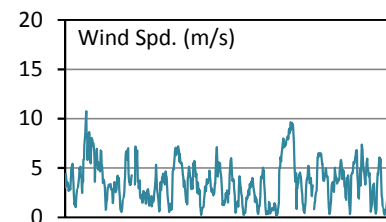
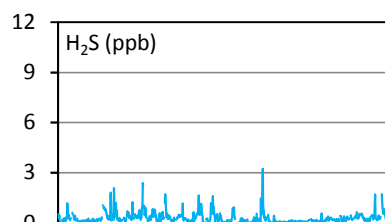
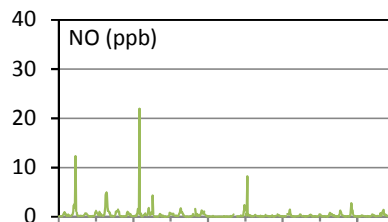
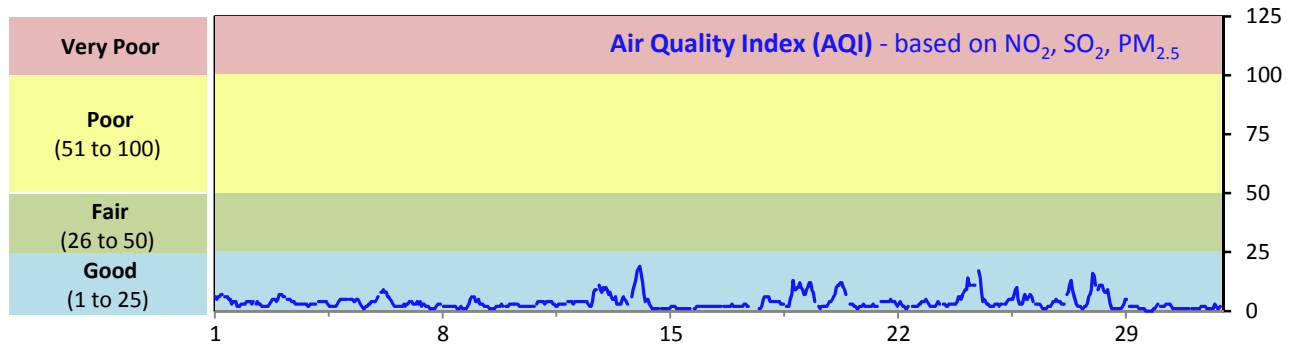
*All compliance parameters were within the Saskatchewan Ambient Air Quality Standard.

*All compliance parameters are above 90% operational, with the exception of the H₂S/SO₂ analyzer. The analyzer was malfunctioning from February 25 11:00 to March 18 09:00.

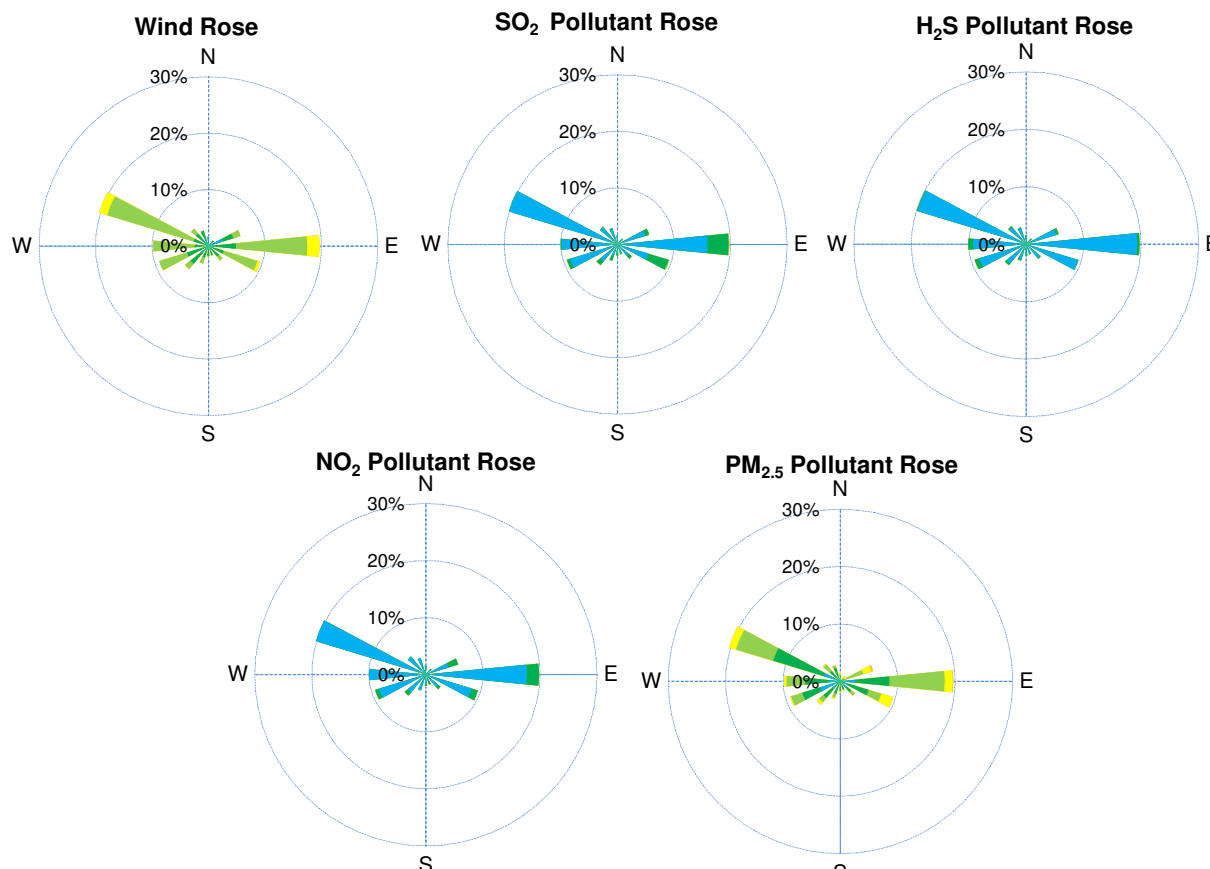
SESAA Stoughton Station - March 2015 Summary Report

Pollutants		Month Records		24-Hour Records				1-Hour Records			
Name	Conc. Unit	Avg. Conc.	Uptime	Maximum		SAAQS Standard	Exceed Days	Maximum		SAAQS Standard	Exceed Hours
				Conc.	Time			Conc.	Time		
NO	ppb	0.4	99.7%	1.5	Mar-2	-	-	22.0	Mar-08 13:00	-	-
NO ₂	ppb	2.2	99.7%	6.3	Mar-5	-	-	13.5	Mar-05 08:00	212	0
NO _x	ppb	2.5	99.7%	7.6	Mar-5	-	-	30.8	Mar-08 13:00	-	-
SO ₂	ppb	0.5	99.7%	2.0	Mar-5	57	0	5.6	Mar-31 11:00	172	0
H ₂ S	ppb	0.3	99.7%	0.6	Mar-8	3.6	0	3.3	Mar-19 23:00	10.8	0
PM _{2.5}	ug/m3	4	99.7%	9	Mar-24	30	0	23	Mar-14 01:00	-	-

SAAQS: Saskatchewan Ambient Air Quality Standards



SESAA Stoughton Station - March 2015 Summary Report



Parameters	Unit	Color Code for Wind Spd & Pollutant Conc. Class					
Wind Speed	m/s	0.3 ≤ WS < 1.4	1.4 ≤ WS < 3.1	3.1 ≤ WS < 7.8	7.8 ≤ WS < 10.8	10.8 ≤ WS < 13.6	WS ≥ 13.6
SO ₂	ppb	0 ≤ C < 1	1 ≤ C < 5	5 ≤ C < 10	10 ≤ C < 57	57 ≤ C < 172	C ≥ 172
NO ₂	ppb	0 ≤ C < 5	5 ≤ C < 15	15 ≤ C < 30	30 ≤ C < 100	100 ≤ C < 212	C ≥ 212
H ₂ S	ppb	0 ≤ C < 1	1 ≤ C < 3.6	3.6 ≤ C < 5	5 ≤ C < 8	8 ≤ C < 10.8	C ≥ 10.8
PM _{2.5}	ug/m ³	0 ≤ C < 2	2 ≤ C < 4	4 ≤ C < 10	10 ≤ C < 20	20 ≤ C < 30	C ≥ 30

Monthly Update

*All data has been slope, intercept, and baseline corrected. Data may change after validation process.

*All compliance parameters were within the Saskatchewan Ambient Air Quality Standards.

*All compliance parameters are above 90% operational.

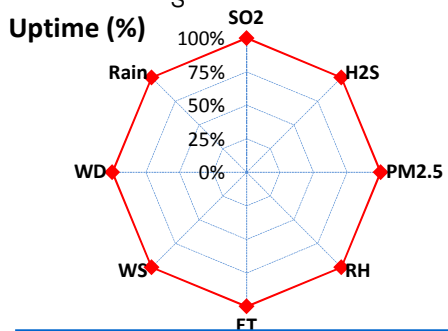
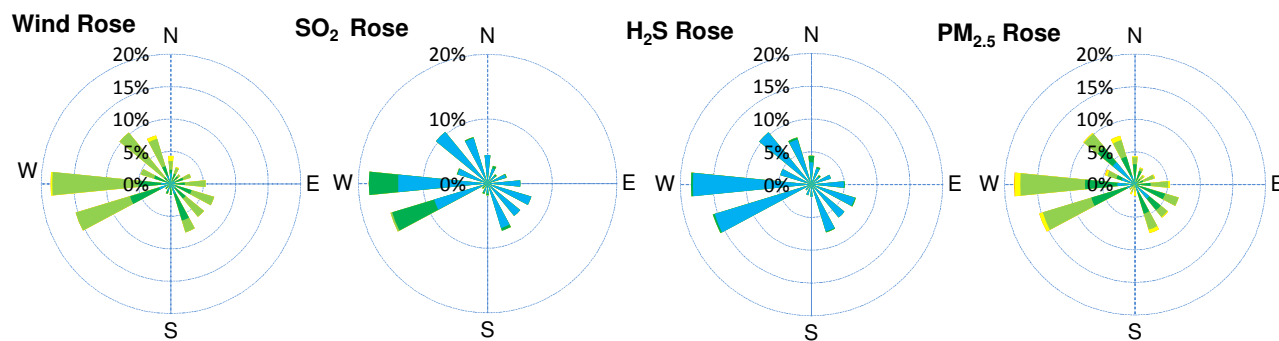
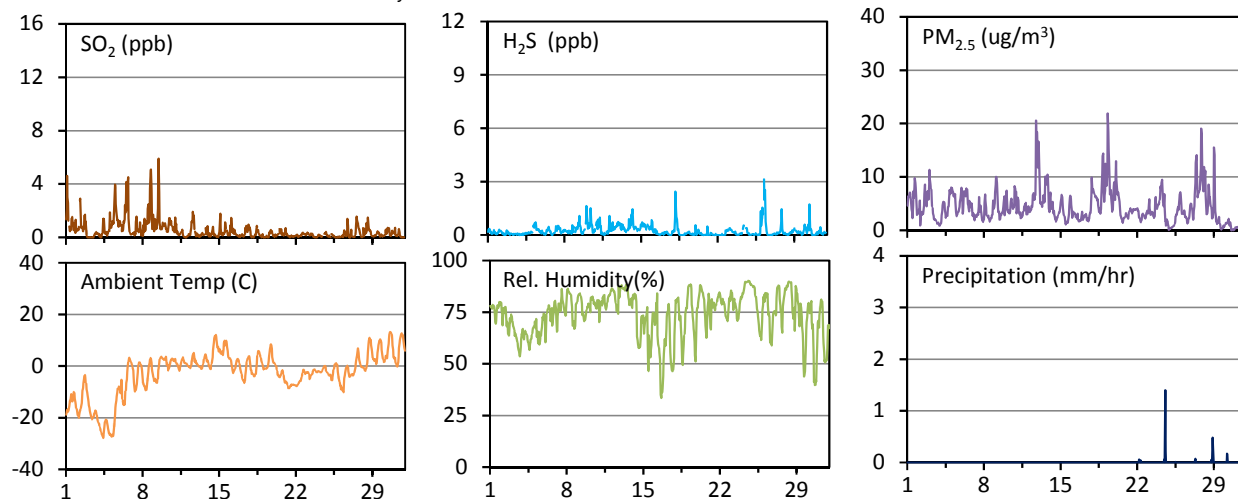
*There are two hours of data for all parameters flagged as "power failure" on March 24 due to a power disruption.

*Routine quarterly calibrations were completed on March 17.

SESAA Wauchope Station - March 2015 Summary Report

Pollutants		Month Records		24-Hour Records				1-Hour Records			
Name	Conc. Unit	Avg. Conc.	Uptime	Maximum		SAAQS Objective	Exceed Days	Maximum		SAAQS Objective	Exceed Hours
				Conc.	Time			Conc.	Time		
SO ₂	ppb	0.5	100.0%	1.7	Mar-8	57	0	5.9	Mar-09 11:00	172	0
H ₂ S	ppb	0.2	100.0%	0.6	Mar-10	3.6	0	3.1	Mar-26 05:00	10.8	0
PM _{2.5}	ug/m3	4	100.0%	9	Mar-19	30	0	22	Mar-19 07:00	-	-

SAAQS: Saskatchewan Ambient Air Quality Standards



Parameters	Unit	Color Code for Wind Spd & Pollutant Conc. Class					
Wind Speed	m/s	0.3 ≤ WS < 1.4	1.4 ≤ WS < 3.1	3.1 ≤ WS < 7.8	7.8 ≤ WS < 10.8	10.8 ≤ WS < 13.6	WS ≥ 13.6
SO ₂	ppb	0 ≤ C < 1	1 ≤ C < 5	5 ≤ C < 10	10 ≤ C < 57	57 ≤ C < 172	C ≥ 172
H ₂ S	ppb	0 ≤ C < 1	1 ≤ C < 3.6	3.6 ≤ C < 5	5 ≤ C < 8	8 ≤ C < 10.8	C ≥ 10.8
PM _{2.5}	ug/m ³	0 ≤ C < 2	2 ≤ C < 4	4 ≤ C < 10	10 ≤ C < 20	20 ≤ C < 30	C ≥ 30

Monthly Update

*All data has been slope, intercept, and baseline corrected. Data may change after validation process.

*All compliance parameters were within the Saskatchewan Ambient Air Quality Standards.

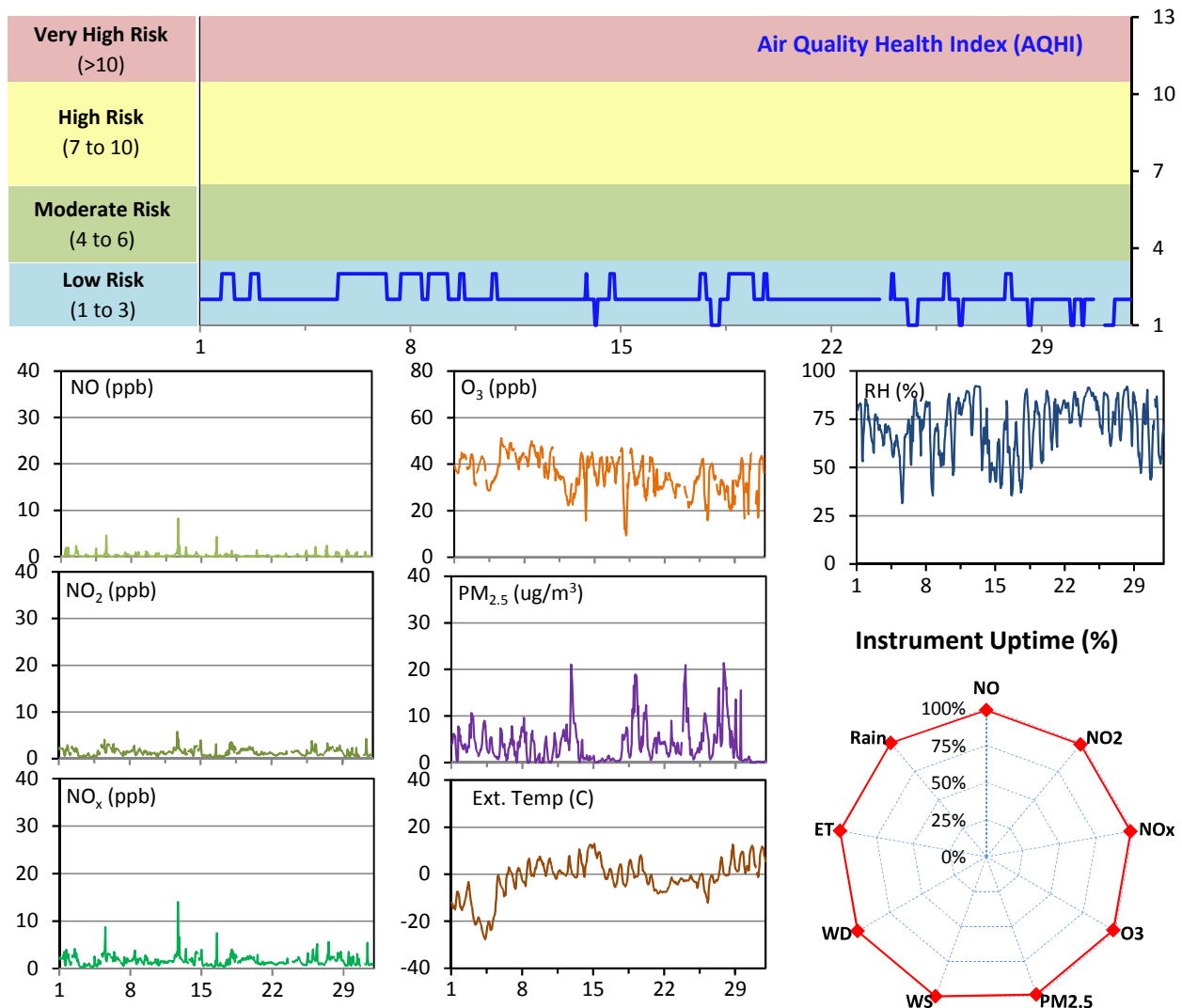
*All compliance parameters were greater than 90% operational this month, there are no operational issues to report.

*Routine quarterly calibrations were completed on March 24.

SESAA Wawota Station - March 2015 Summary Report

Pollutants		Month Records		24-Hour Records				1-Hour Records			
Name	Conc. Unit	Avg. Conc.	Uptime	Maximum		SAAQS Objective	Exceed Days	Maximum		SAAQS Objective	Exceed Hours
				Conc.	Time			Conc.	Time		
NO	ppb	0.3	98.6%	0.8	Mar-12	-	-	8.3	Mar-12 16:00	-	-
NO ₂	ppb	1.4	98.6%	2.4	Mar-5	-	-	5.8	Mar-12 16:00	212	0
NO _x	ppb	1.6	98.6%	3.0	Mar-5	-	-	14.0	Mar-12 16:00	-	-
O ₃	ppb	36	98.6%	46	Mar-6	-	-	51	Mar-05 16:00	82	0
PM _{2.5}	ug/m3	4	98.7%	10	Mar-27	30	0	21	Mar-27 20:00	-	-

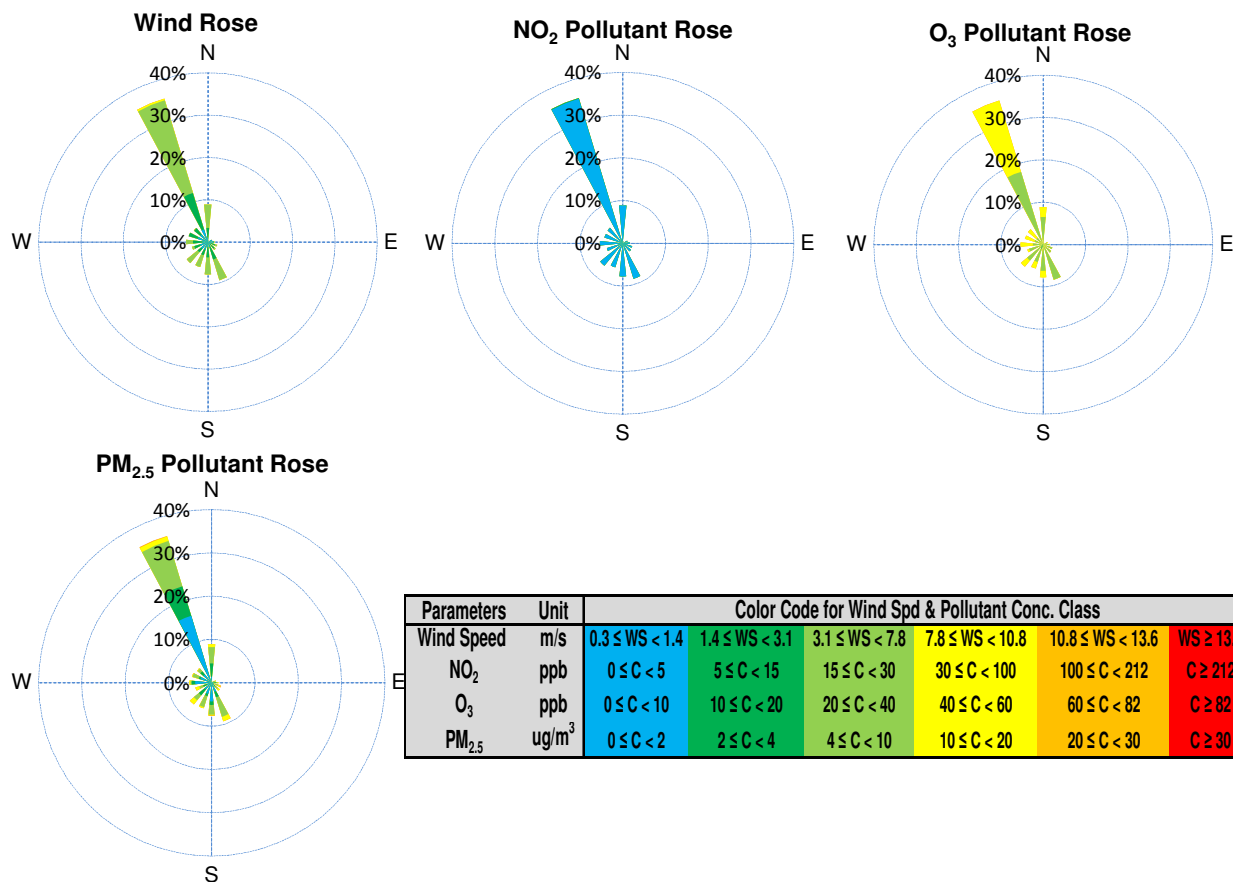
SAAQS: Saskatchewan Ambient Air Quality Standards



Monthly Update

- *All data has been slope, intercept, and baseline corrected. Data may change after validation process.
- *All compliance parameters were within the Saskatchewan Ambient Air Quality Standards.
- *All compliance parameters were greater than 90% operational.
- *8 hours of data for all pollutant parameters is flagged as "analyzer failure" on March 30. Power fluctuations caused abnormal data to be recorded. 2 hours of data following this incident is also flagged as "power failure" for all instruments as the power was disrupted.
- *Routine quarterly calibrations were completed on March 23.
- *Wind data should be interpreted with caution as a large obstacle near the airpointer may be affecting it.

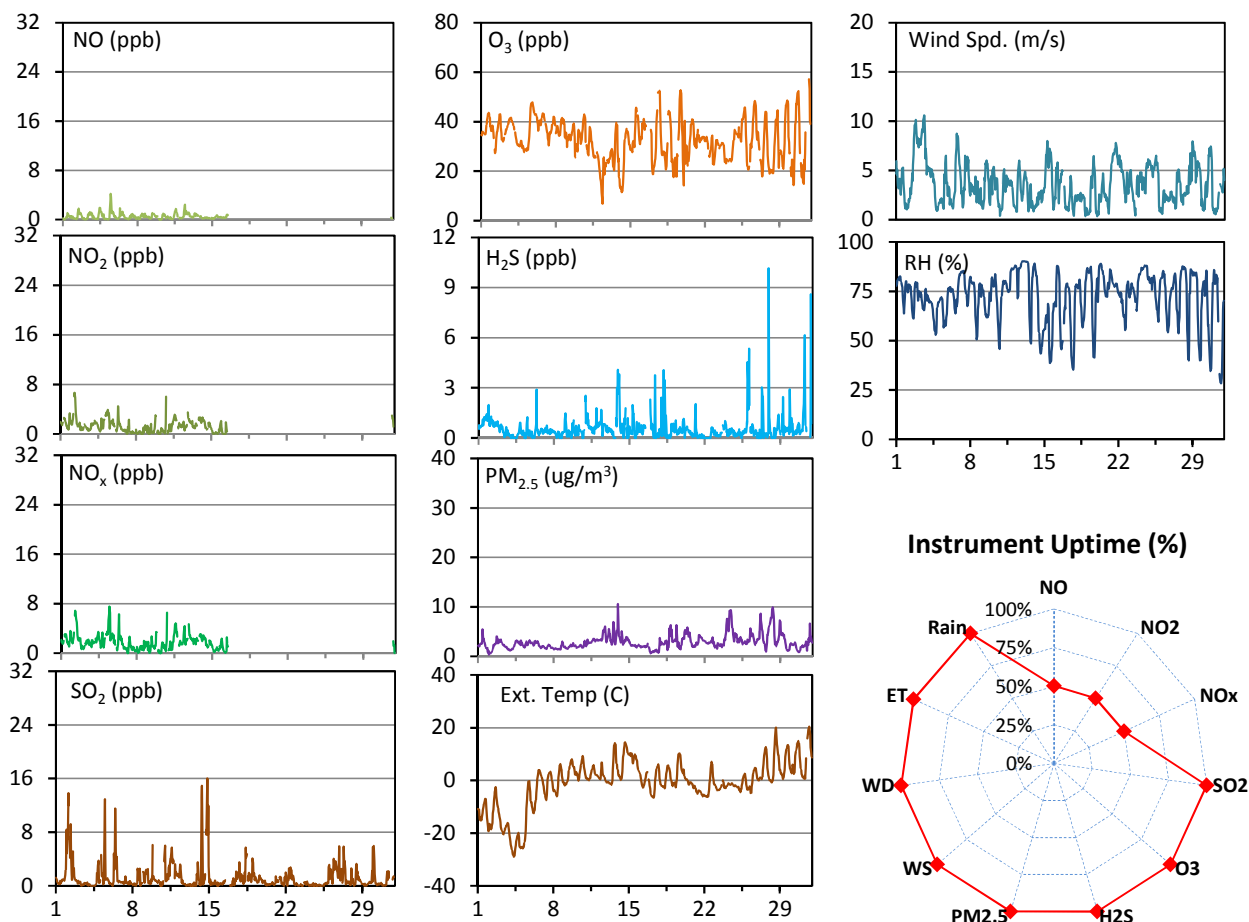
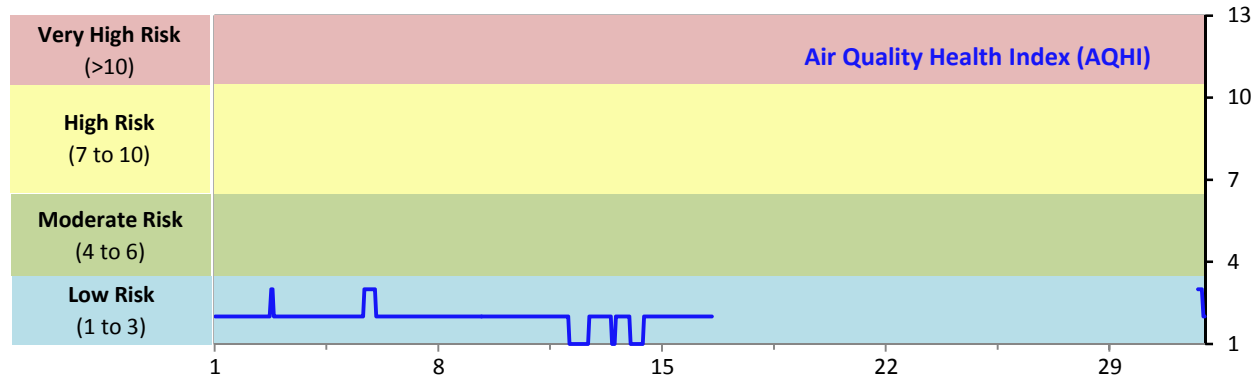
SESAA Wawota Station - March 2015 Summary Report



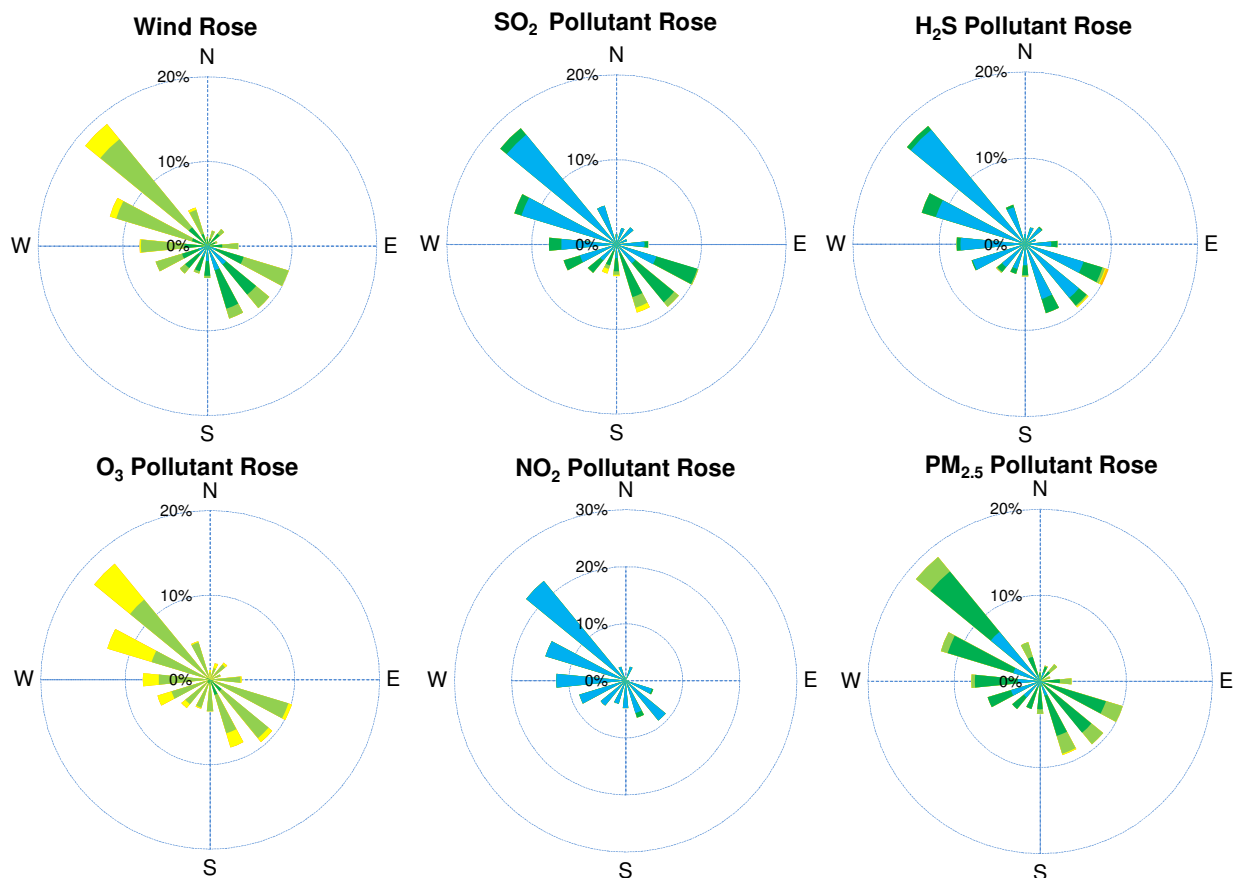
SESAA Weyburn Station - March 2015 Summary Report

Pollutants		Month Records		24-Hour Records				1-Hour Records			
Name	Conc. Unit	Avg. Conc.	Uptime	Maximum		SAAQS Standard	Exceed Days	Maximum		SAAQS Standard	Exceed Hours
				Conc.	Time			Conc.	Time		
NO	ppb	0.5	50.1%	0.9	Mar-5	-	-	4.2	Mar-05 11:00	-	-
NO ₂	ppb	1.3	50.1%	2.4	Mar-5	-	-	6.7	Mar-02 07:00	212	0
NO _x	ppb	1.8	50.1%	3.3	Mar-5	-	-	7.6	Mar-05 11:00	-	-
SO ₂	ppb	1.2	99.9%	4.9	Mar-14	57	0	16.0	Mar-14 20:00	172	0
O ₃	ppb	33	99.9%	41	Mar-6	-	-	57	Mar-31 18:00	82	0
H ₂ S	ppb	0.6	99.9%	1.0	Mar-1	3.6	0	10.2	Mar-27 22:00	10.8	0
PM _{2.5}	ug/m3	3	99.9%	6	Mar-24	30	0	11	Mar-13 23:00	-	-

SAAQS: Saskatchewan Ambient Air Quality Standards



SESAA Weyburn Station - March 2015 Summary Report



Parameters	Unit	Color Code for Wind Spd & Pollutant Conc. Class					
Wind Speed	m/s	$0.3 \leq WS < 1.4$	$1.4 \leq WS < 3.1$	$3.1 \leq WS < 7.8$	$7.8 \leq WS < 10.8$	$10.8 \leq WS < 13.6$	$WS \geq 13.6$
SO ₂	ppb	$0 \leq C < 1$	$1 \leq C < 5$	$5 \leq C < 10$	$10 \leq C < 57$	$57 \leq C < 172$	$C \geq 172$
NO ₂	ppb	$0 \leq C < 5$	$5 \leq C < 15$	$15 \leq C < 30$	$30 \leq C < 100$	$100 \leq C < 212$	$C \geq 212$
O ₃	ppb	$0 \leq C < 10$	$10 \leq C < 20$	$20 \leq C < 40$	$40 \leq C < 60$	$60 \leq C < 82$	$C \geq 82$
H ₂ S	ppb	$0 \leq C < 1$	$1 \leq C < 3.6$	$3.6 \leq C < 5$	$5 \leq C < 8$	$8 \leq C < 10.8$	$C \geq 10.8$
PM _{2.5}	ug/m ³	$0 \leq C < 2$	$2 \leq C < 4$	$4 \leq C < 10$	$10 \leq C < 20$	$20 \leq C < 30$	$C \geq 30$

Monthly Update

*All data has been slope, intercept, and baseline corrected. Data may change after validation process.

*All compliance parameters were within the Saskatchewan Ambient Air Quality Standards.

*All compliance parameters are above 90% operational, with the exception of the NO/NO₂/NO_x analyzer. The analyzer was removed for repairs on March 16, and re-installed and calibrated on March 31.

*One hour of data for all parameters is flagged as "power failure" on March 23 due to a power disruption.

*Routine quarterly calibration for SO₂, H₂S and O₃ were completed on March 16. NO/NO₂/NO_x was calibrated on March 31.