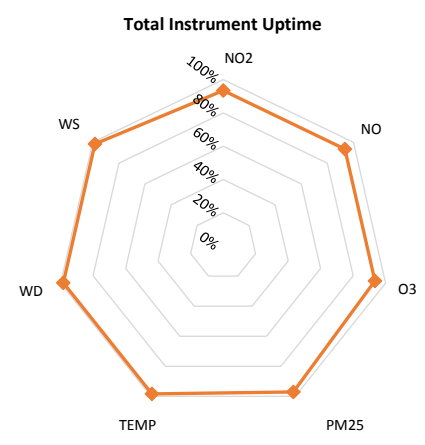
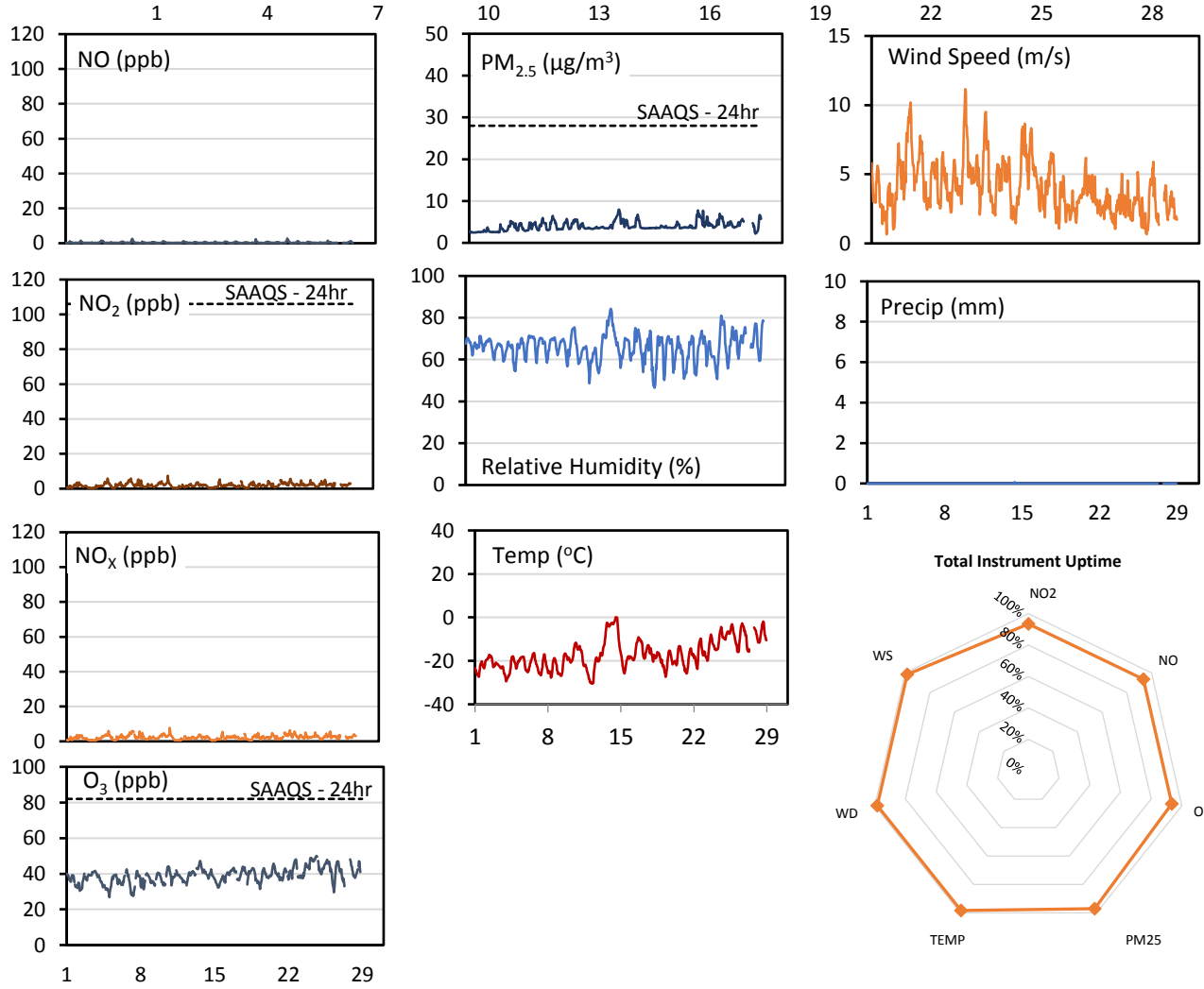
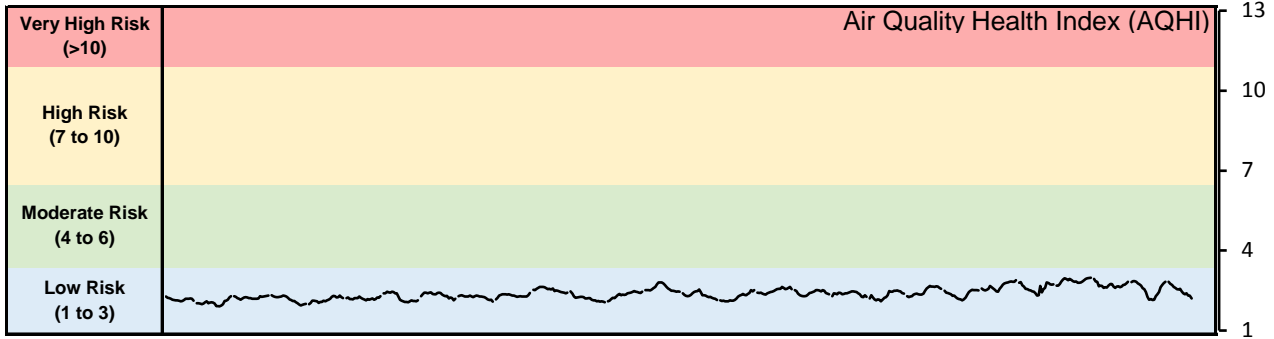


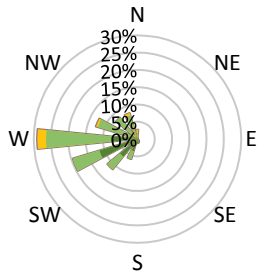
SESAA Esterhazy Station - February 2018 Summary Report

Pollutants		Month Records		24-Hour Records				1-Hour Records			
Name	Conc. Unit	Avg. Conc.	Total Uptime	Maximum		SAAQS Standard	Exceed Days	Maximum		SAAQS Standard	Exceed Hours
				Conc.	Time			Conc.	Time		
NO	ppb	0.3	93%	0.7	Feb-22	-	-	2.7	Feb-22 11:00	-	-
NO ₂	ppb	2.0	93%	3.3	Feb-22	106	0	7.4	Feb-10 22:00	159	0
NO _x	ppb	2.3	93%	4.0	Feb-22	-	-	7.7	Feb-10 22:00	-	-
O ₃	ppb	39.0	93%	47.3	Feb-24	-	-	50.0	Feb-24 15:00	82	0
PM _{2.5}	µg/m ³	4.0	97%	5.9	Feb-15	28	0	7.9	Feb-15 08:00	-	-

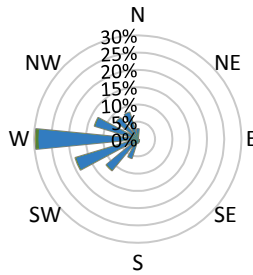
SAAQS: Saskatchewan Ambient Air Quality Standards



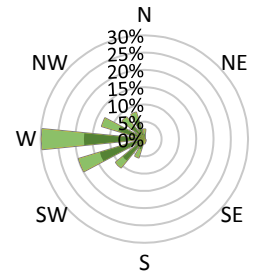
Wind Rose



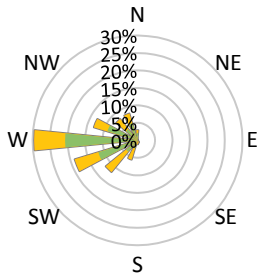
NO₂ Pollutant Rose



PM_{2.5} Pollutant Rose



O₃ Pollutant Rose



Parameters	Unit	Color Code for Wind Speed and Pollution Concentration Class					
Wind Speed	m/s	0.3 ≤ WS < 1.4	1.4 ≤ WS < 3.1	3.1 ≤ WS < 7.8	7.8 ≤ WS < 10.8	10.8 ≤ WS < 13.6	WS ≥ 13.6
O ₃	ppb	0 ≤ C < 10	10 ≤ C < 20	20 ≤ C < 40	40 ≤ C < 60	60 ≤ C < 82	C ≥ 82
NO ₂	ppb	0 ≤ C < 5	5 ≤ C < 15	15 ≤ C < 30	30 ≤ C < 100	100 ≤ C < 212	C ≥ 212
PM _{2.5}	ug/m ³	0 ≤ C < 2	2 ≤ C < 4	4 ≤ C < 10	10 ≤ C < 20	20 ≤ C < 30	C ≥ 30

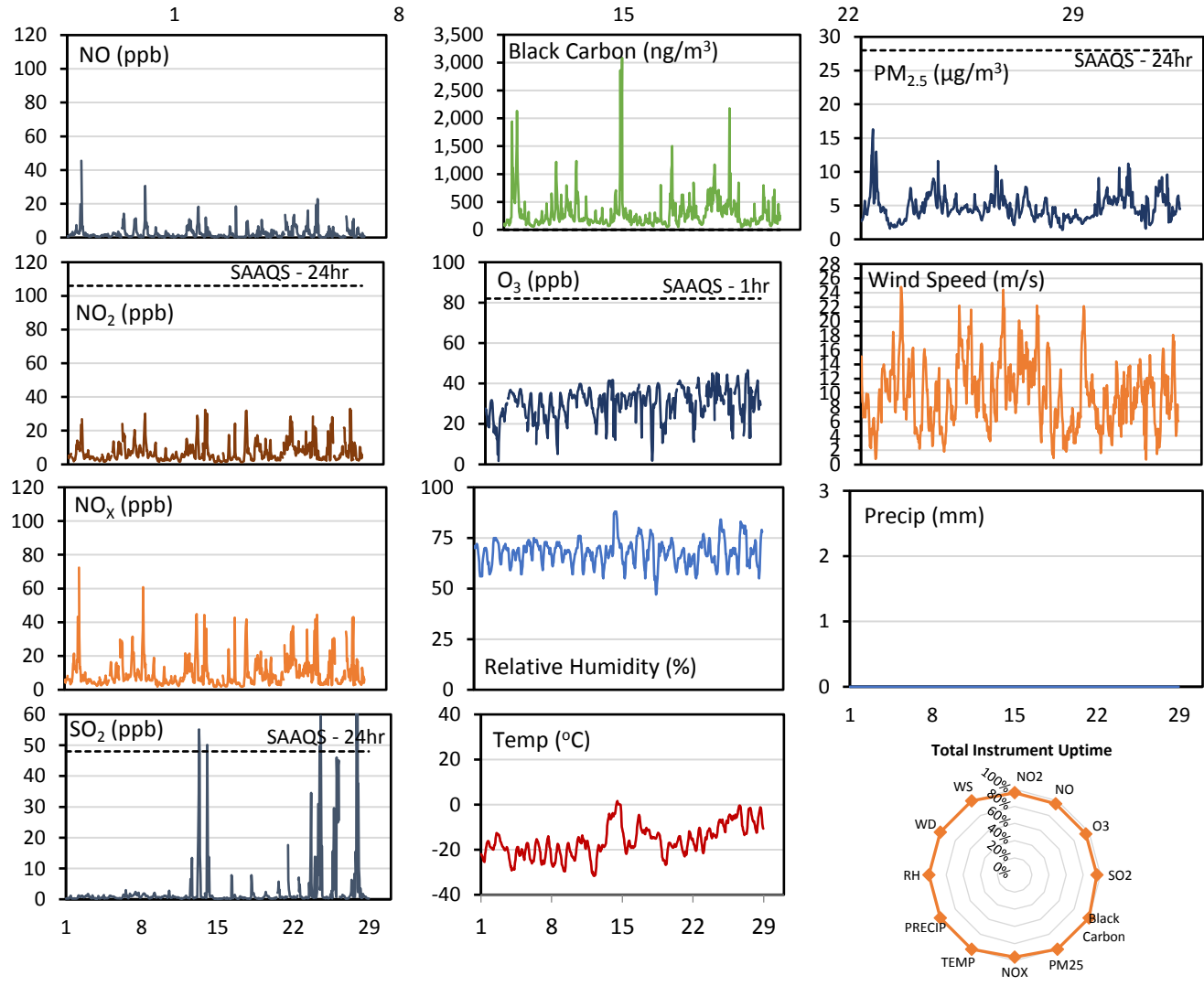
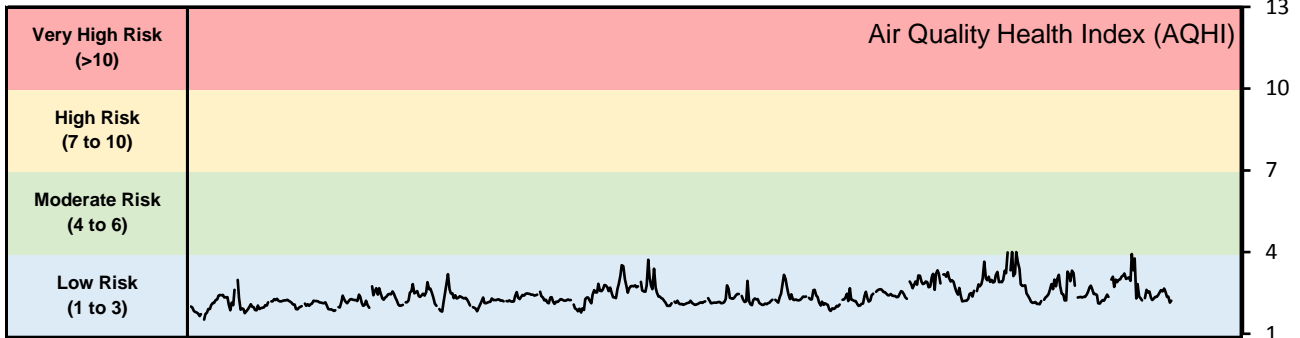
Monthly Update

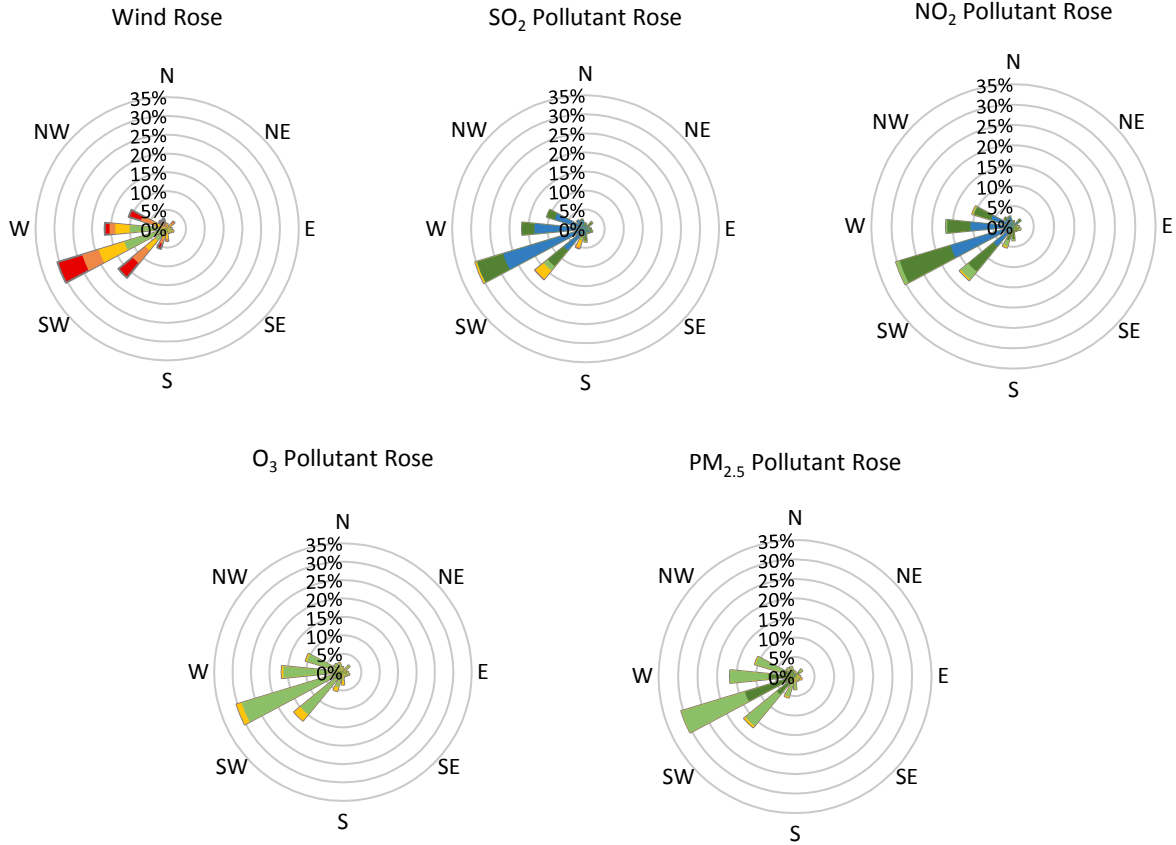
- Achieved >93% of scheduled uptime for all parameters
- Downtime of 4% results from routine daily Internal Zeroes and Spans
- Data loss due to operational issues

SESAA Estevan Station - February 2018 Summary Report

Pollutants		Month Records		24-Hour Records				1-Hour Records			
Name	Conc. Unit	Avg. Conc.	Total Uptime	Maximum		SAAQS Standard	Exceed Days	Maximum		SAAQS Standard	Exceed Hours
				Conc.	Day			Conc.	Time		
NO	ppb	2.6	96%	5.8	Feb-02	-	-	45.5	Feb-02 08:00	-	-
NO ₂	ppb	7.2	96%	13.2	Feb-22	106	0	33.0	Feb-27 20:00	159	0
NO _x	ppb	9.7	96%	17.7	Feb-22	-	-	72.4	Feb-02 08:00	-	-
SO ₂	ppb	2.7	96%	11.2	Feb-27	48	0	87.1	Feb-27 22:00	172	0
Black Carbon	ng/m ³	297.3	100%	675.7	Feb-12	-	-	3086.0	Feb-12 23:00	-	-
O ₃	ppb	30.2	96%	38.1	Feb-24	-	-	46.6	Feb-27 16:00	82	0
PM _{2.5}	µg/m ³	4.7	100%	7.2	Feb-02	28	0	16.3	Feb-02 01:00	-	-

SAAQS: Saskatchewan Ambient Air Quality Standards





Parameters	Unit	Color Code for Wind Speed and Pollution Concentration Class						
		0.3 ≤ WS < 1.4	1.4 ≤ WS < 3.1	3.1 ≤ WS < 7.8	7.8 ≤ WS < 10.8	10.8 ≤ WS < 13.6	WS ≥ 13.6	
SO ₂	ppb	0 ≤ C < 1	1 ≤ C < 5	5 ≤ C < 10	10 ≤ C < 57	57 ≤ C < 172	C ≥ 172	
NO ₂	ppb	0 ≤ C < 5	5 ≤ C < 15	15 ≤ C < 30	30 ≤ C < 100	100 ≤ C < 212	C ≥ 212	
O ₃	ppb	0 ≤ C < 10	10 ≤ C < 20	20 ≤ C < 40	40 ≤ C < 60	60 ≤ C < 82	C ≥ 82	
PM _{2.5}	µg/m ³	0 ≤ C < 2	2 ≤ C < 4	4 ≤ C < 10	10 ≤ C < 20	20 ≤ C < 30	C ≥ 30	

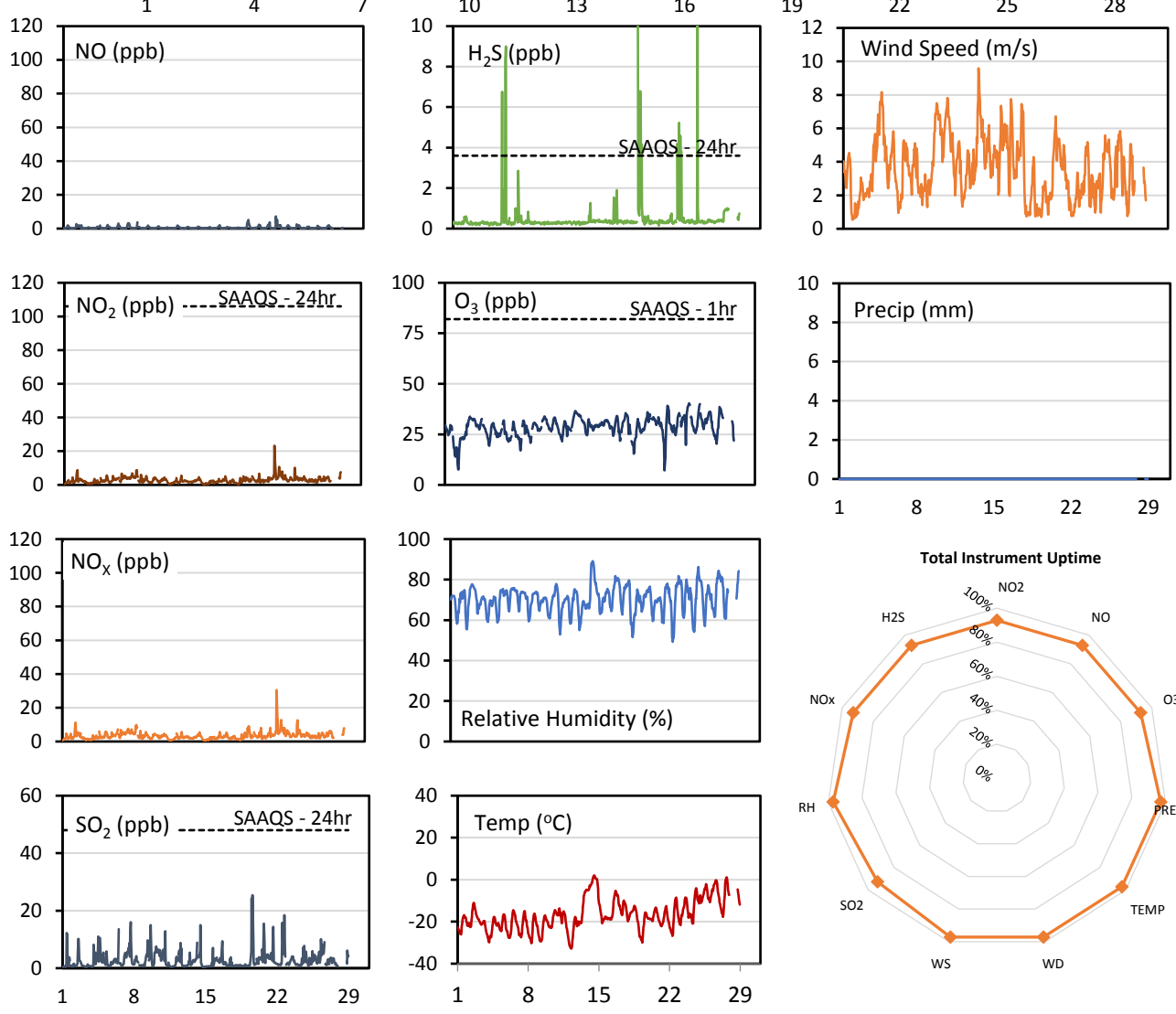
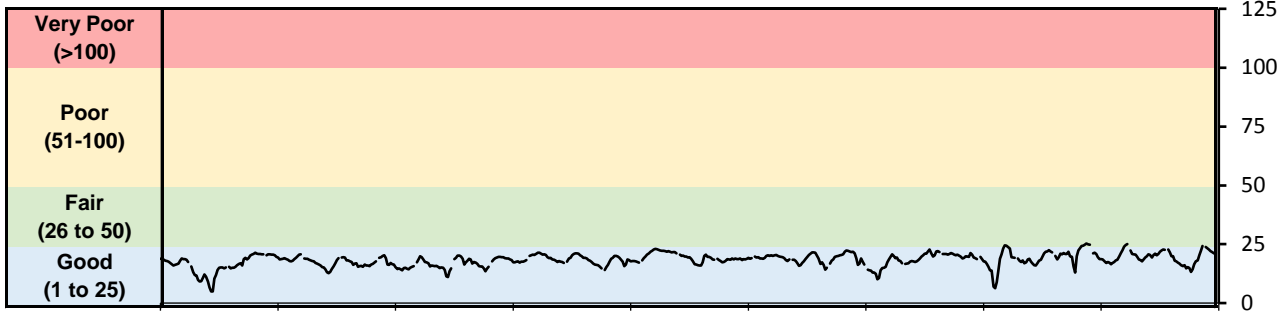
Monthly Update

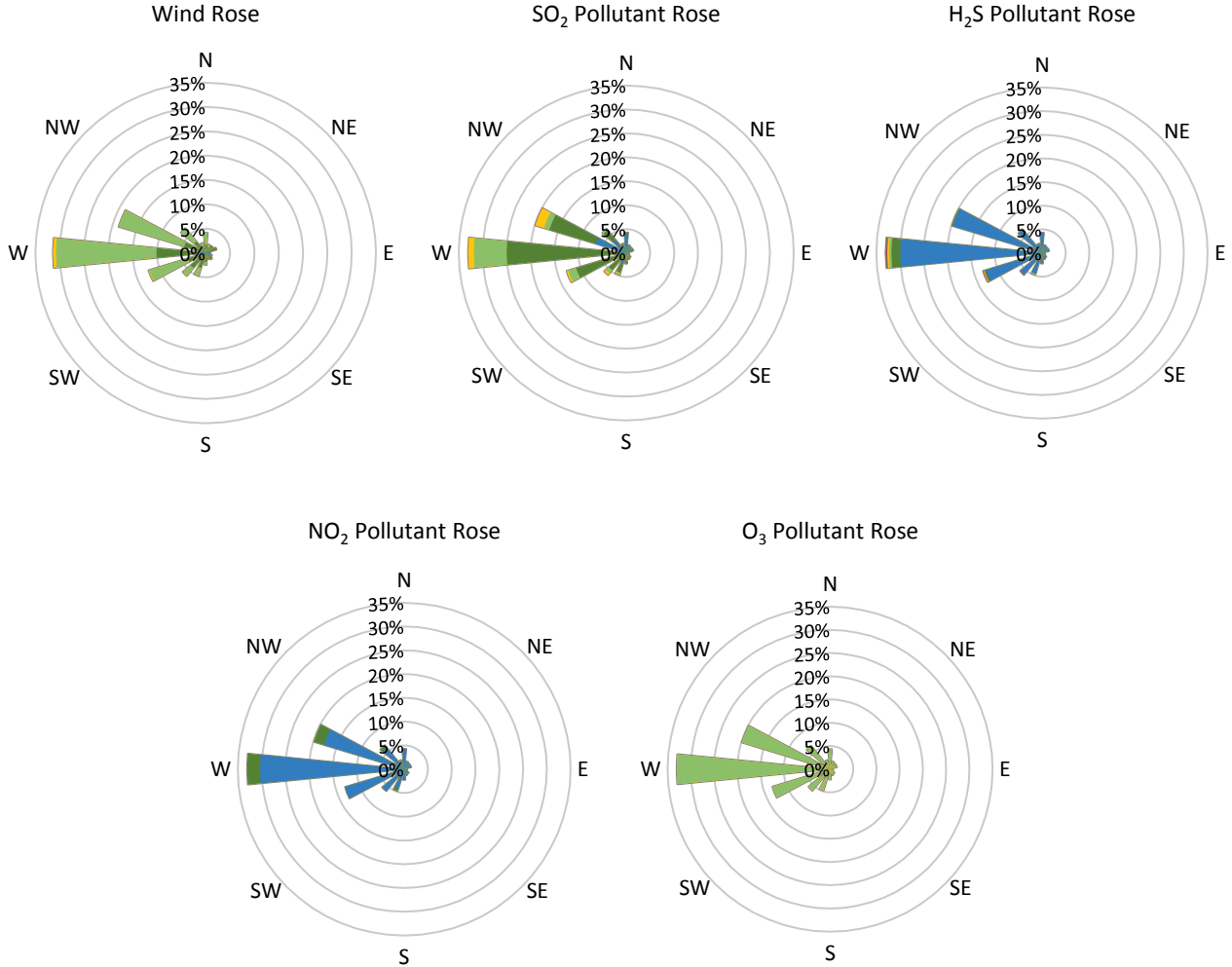
- Achieved >95% of scheduled uptime for all parameters
- Downtime of 4% results from daily internal zeroes and spans

SESAA Glen Ewen Station - February 2018 Summary Report

Pollutants		Month Records		24-Hour Records				1-Hour Records			
Name	Conc. Unit	Avg. Conc.	Total Uptime	Maximum		SAAQS Standard	Exceed Days	Maximum		SAAQS Standard	Exceed Hours
				Conc.	Time			Conc.	Time		
NO	ppb	0.6	93%	1.6	Feb-22	-	-	7.2	Feb-22 06:00	-	-
NO ₂	ppb	2.8	93%	7.0	Feb-22	106	0	23.3	Feb-22 06:00	159	0
NO _x	ppb	3.4	93%	8.5	Feb-22	-	-	30.5	Feb-22 06:00	-	-
SO ₂	ppb	2.9	93%	5.2	Feb-10	48	0	25.4	Feb-19 14:00	172	0
H ₂ S	ppb	0.5	93%	1.8	Feb-19	3.6	0	11.1	Feb-19 01:00	11	1
O ₃	ppb	28.6	93%	33.6	Feb-24	-	-	40.4	Feb-24 15:00	82	0

SAAQS: Saskatchewan Ambient Air Quality Standards





Parameters	Unit	Color Code for Wind Speed and Pollution Concentration Class						
Wind Speed	m/s	$0.3 \leq WS < 1.4$	$1.4 \leq WS < 3.1$	$3.1 \leq WS < 7.8$	$7.8 \leq WS < 10.8$	$10.8 \leq WS < 13.6$	$WS \geq 13.6$	
SO ₂	ppb	$0 \leq C < 1$	$1 \leq C < 5$	$5 \leq C < 10$	$10 \leq C < 57$	$57 \leq C < 172$	$C \geq 172$	
NO ₂	ppb	$0 \leq C < 5$	$5 \leq C < 15$	$15 \leq C < 30$	$30 \leq C < 100$	$100 \leq C < 212$	$C \geq 212$	
H ₂ S	ppb	$0 \leq C < 1$	$1 \leq C < 3.6$	$3.6 \leq C < 5$	$5 \leq C < 8$	$8 \leq C < 10.8$	$C \geq 10.8$	
O ₃	ppb	$0 \leq C < 10$	$10 \leq C < 20$	$20 \leq C < 40$	$40 \leq C < 60$	$60 \leq C < 82$	$C \geq 82$	

Monthly Update

- Achieved 93% of scheduled uptime for all parameters
- Downtime of 4% results from routine daily Internal Zeroes and Spans
- Data loss due to operational issues

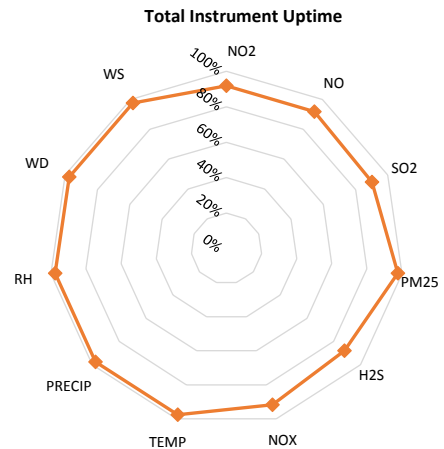
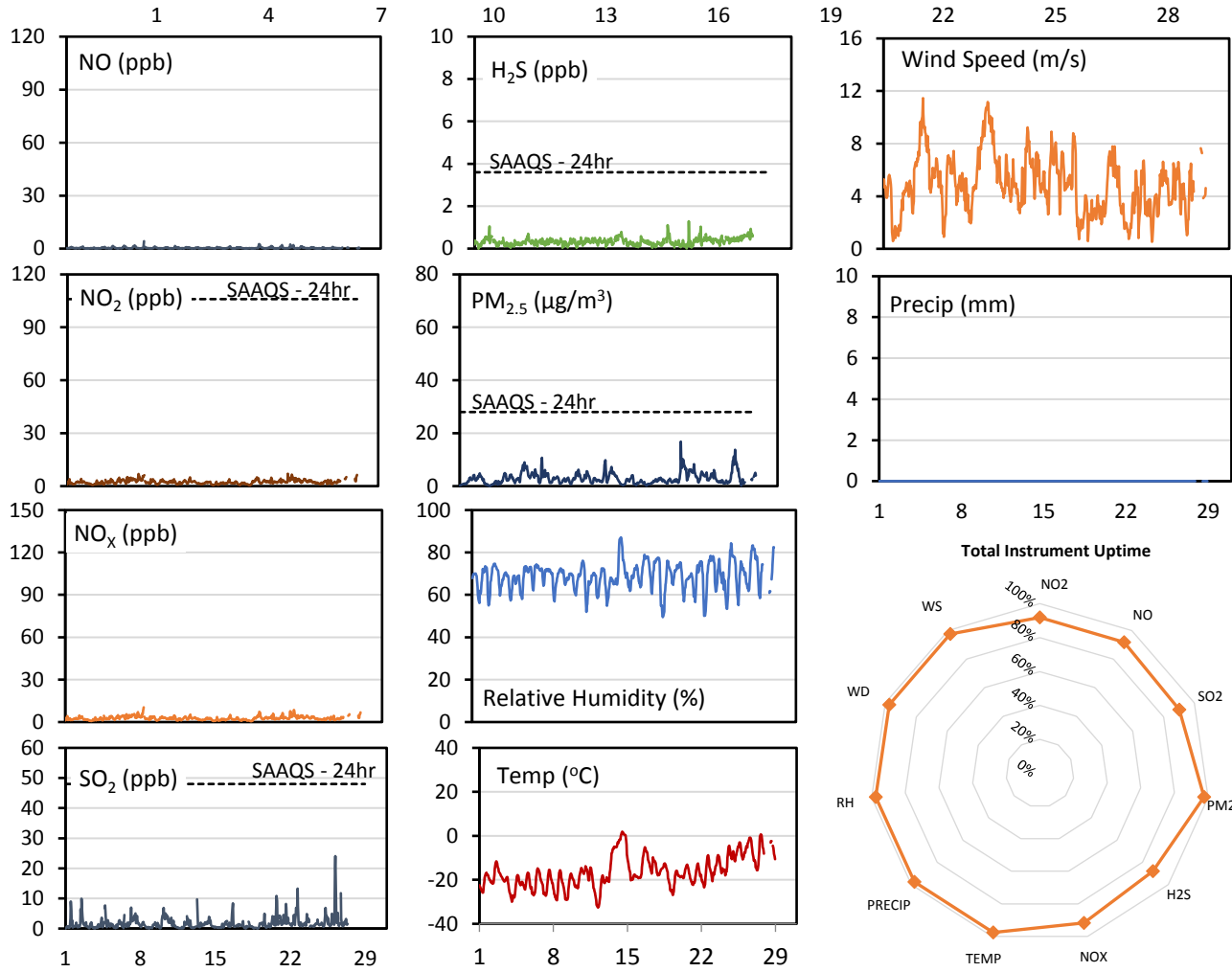
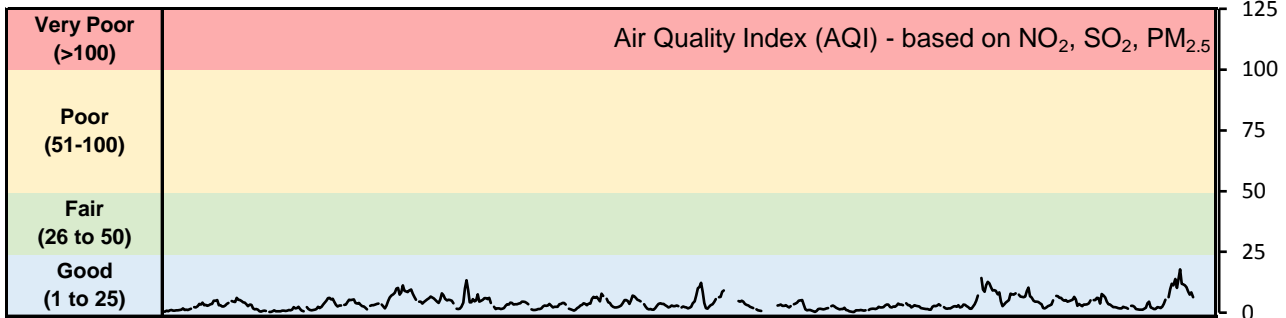
Exceedance Summary (1- Hour Average - Exceedances Highlighted)

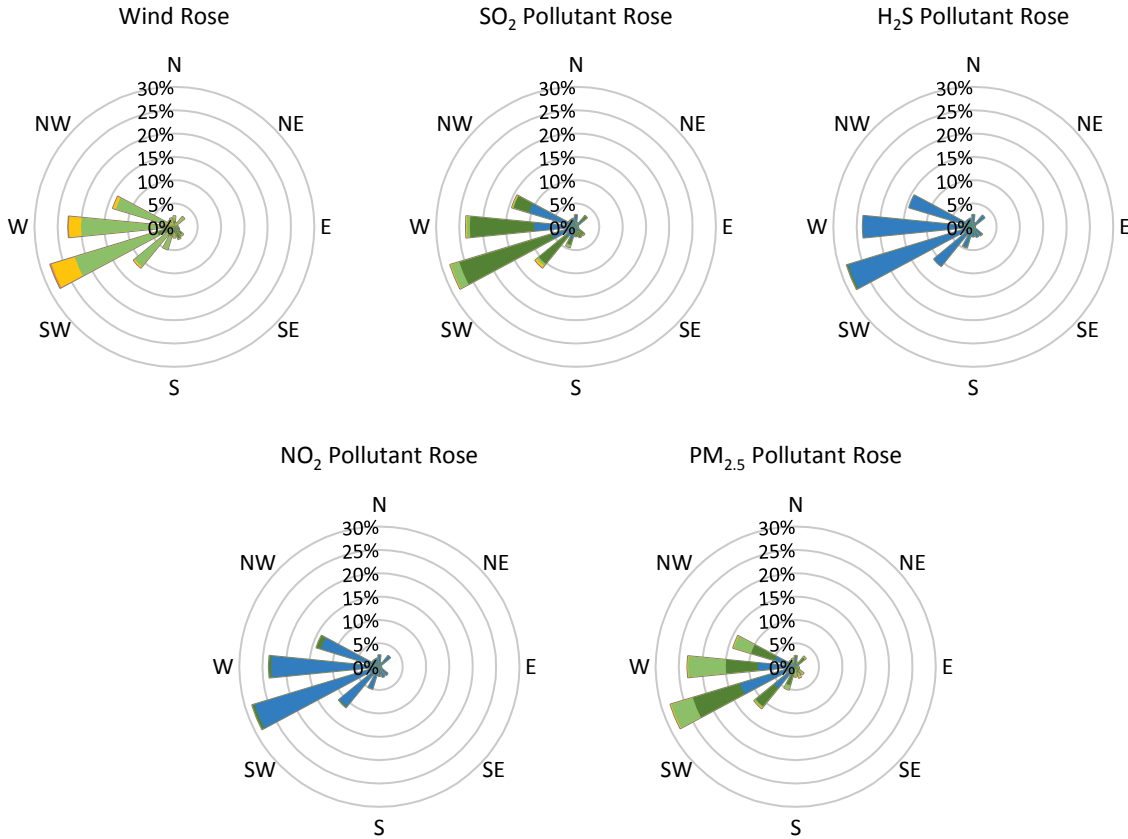
Exceedance Time	AQI	NO ₂ ppb	NO ppb	SO ₂ ppb	O ₃ ppb	NO _x ppb	H ₂ S ppb	Temp °C	WD deg	WS m/s
Feb-19 01:00	14.2	2.1	0.1	0.9	21.7	2.3	11.1	-27.2	277.8	1.1

SESAA Oxbow Station - February 2018 Summary Report

Pollutants		Month Records		24-Hour Records				1-Hour Records			
Name	Conc. Unit	Avg. Conc.	Total Uptime	Maximum		SAAQS Standard	Exceed Days	Maximum		SAAQS Standard	Exceed Hours
				Conc.	Time			Conc.	Time		
NO	ppb	0.4	92%	0.7	Feb-19	-	-	4.2	Feb-08 10:00	-	-
NO ₂	ppb	2.3	92%	4.3	Feb-28	106	0	7.0	Feb-22 07:00	159	0
NO _x	ppb	2.7	92%	4.7	Feb-28	-	-	10.4	Feb-08 10:00	-	-
SO ₂	ppb	1.8	90%	4.7	Feb-26	48	0	24.1	Feb-26 05:00	172	0
H ₂ S	ppb	0.3	88%	0.6	Feb-27	3.6	0	1.3	Feb-21 07:00	11	0
PM _{2.5}	µg/m ³	3.0	98%	6.1	Feb-22	28	0	16.8	Feb-21 21:00	-	-

SAAQS: Saskatchewan Ambient Air Quality Standards





Parameters	Unit	Color Code for Wind Speed and Pollution Concentration Class						
		0.3 ≤ WS < 1.4	1.4 ≤ WS < 3.1	3.1 ≤ WS < 7.8	7.8 ≤ WS < 10.8	10.8 ≤ WS < 13.6	WS ≥ 13.6	
SO ₂	ppb	0 ≤ C < 1	1 ≤ C < 5	5 ≤ C < 10	10 ≤ C < 57	57 ≤ C < 172	C ≥ 172	
NO ₂	ppb	0 ≤ C < 5	5 ≤ C < 15	15 ≤ C < 30	30 ≤ C < 100	100 ≤ C < 212	C ≥ 212	
H ₂ S	ppb	0 ≤ C < 1	1 ≤ C < 3.6	3.6 ≤ C < 5	5 ≤ C < 8	8 ≤ C < 10.8	C ≥ 10.8	
PM _{2.5}	µg/m ³	0 ≤ C < 2	2 ≤ C < 4	4 ≤ C < 10	10 ≤ C < 20	20 ≤ C < 30	C ≥ 30	

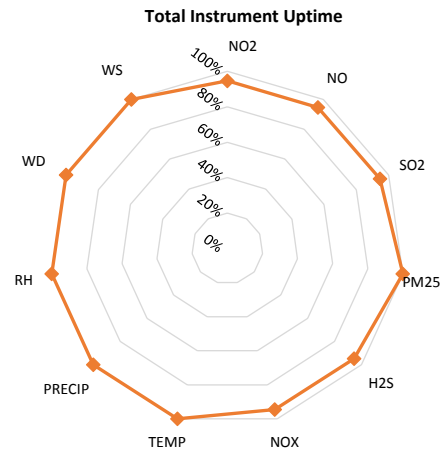
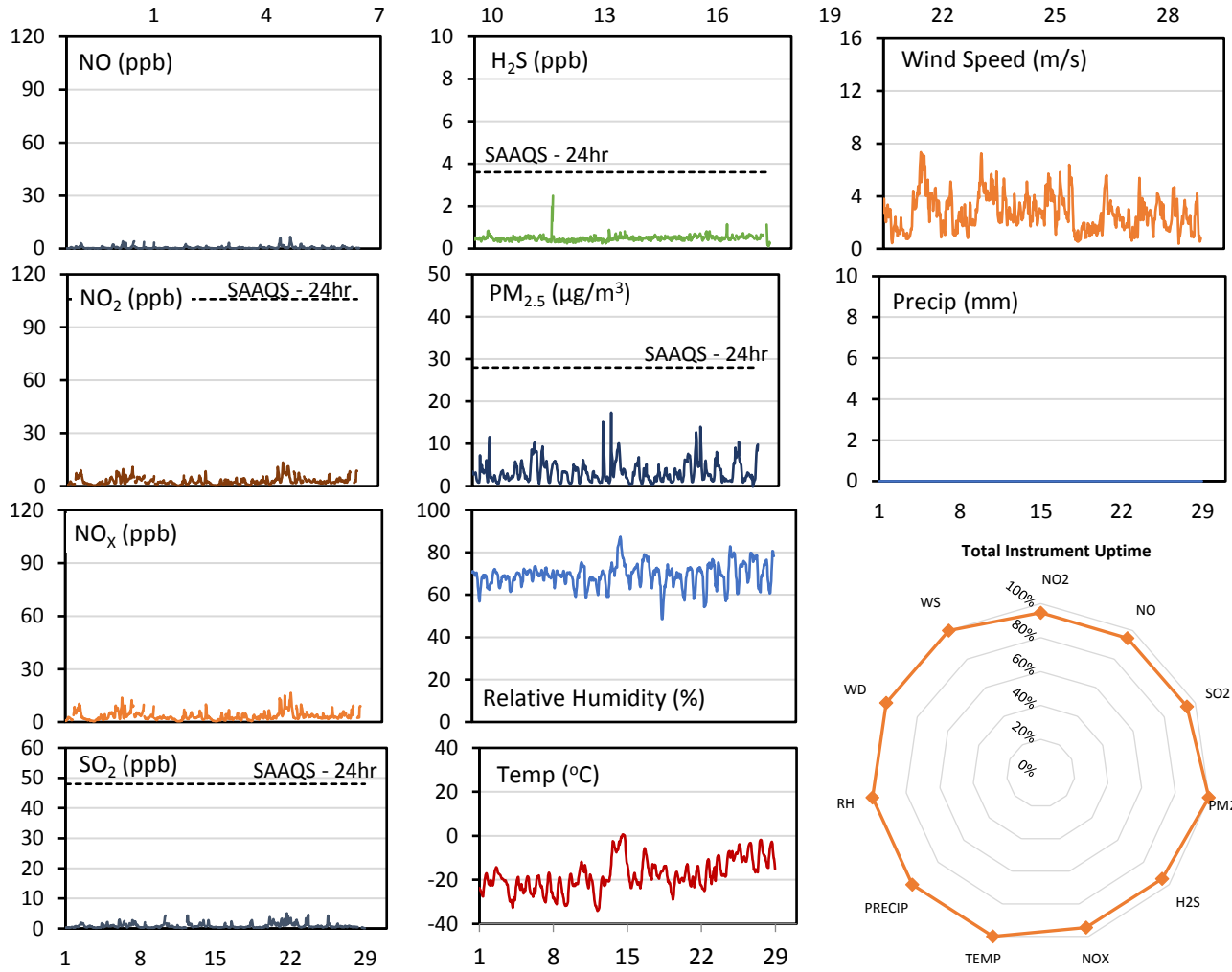
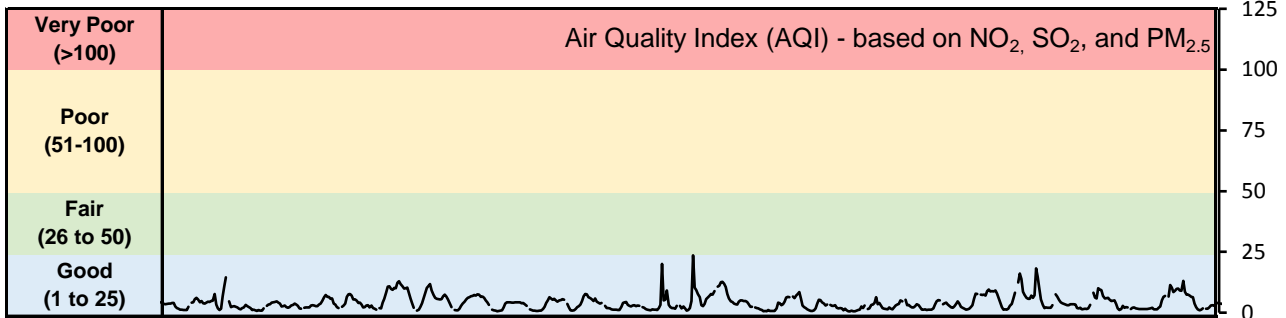
Monthly Update

- Achieved >90% of scheduled uptime for all parameters except H₂S (88%)
- Downtime of 4% results from routine daily Internal Zeroes and Spans
- Data loss due to operational issues. Replaced H₂S/SO₂ analyzer.
- Calibration performed February 27th

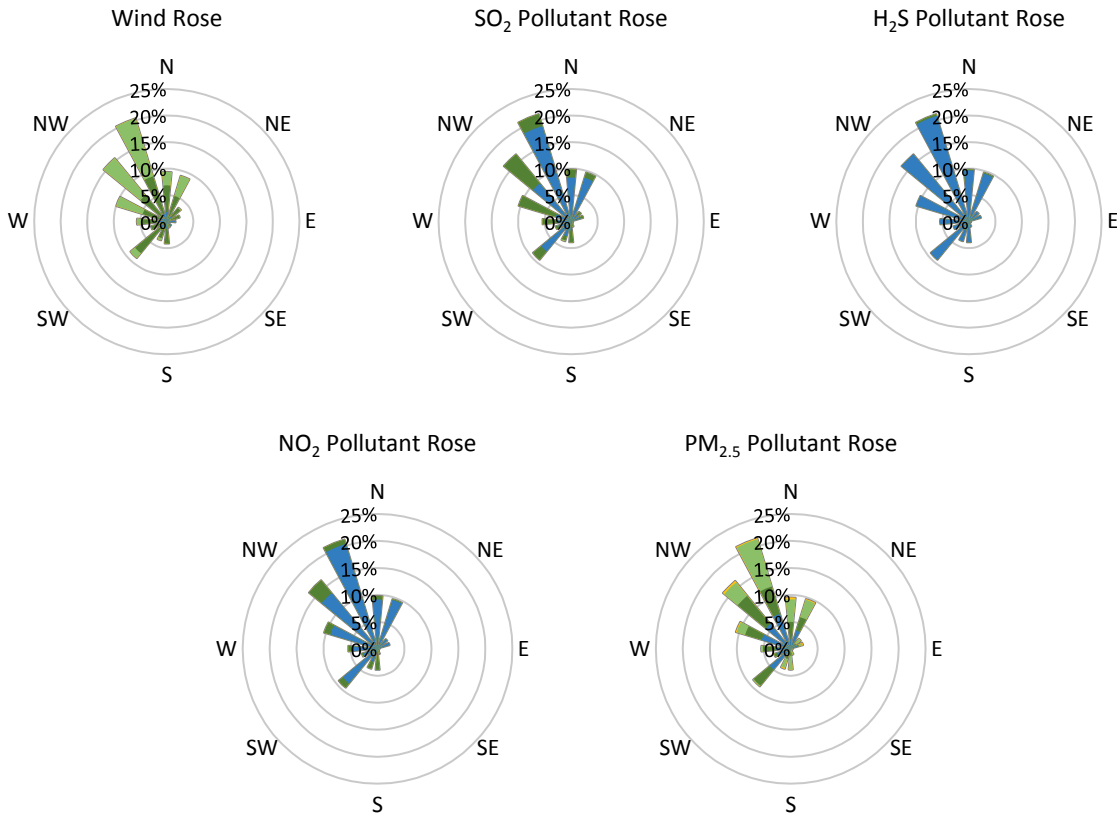
SESAA Stoughton Station - February 2018 Summary Report

Pollutants		Month Records		24-Hour Records				1-Hour Records			
				Maximum		SAAQS Standard	Exceed Days	Maximum		SAAQS Standard	Exceed Hours
				Conc.	Time			Conc.	Time		
Name	Conc. Unit	Avg. Conc.	Total Uptime	Conc.	Time	SAAQS Standard	Exceed Days	Conc.	Time	SAAQS Standard	Exceed Hours
NO	ppb	0.6	95%	1.5	Feb-21	-	-	6.6	Feb-22 09:00	-	-
NO ₂	ppb	2.9	95%	6.2	Feb-22	106	0	13.4	Feb-21 19:00	159	0
NO _x	ppb	3.4	95%	7.7	Feb-22	-	-	16.5	Feb-22 09:00	-	-
SO ₂	ppb	0.9	95%	2.1	Feb-21	48	0	5.1	Feb-21 16:00	172	0
H ₂ S	ppb	0.5	95%	0.6	Feb-22	3.6	0	2.5	Feb-08 10:00	11	0
PM _{2.5}	µg/m ³	3.3	100%	6.0	Feb-07	28	0	17.4	Feb-14 14:00	-	-

SAAQS: Saskatchewan Ambient Air Quality Standards



SESAA Stoughton Station - February 2018 Summary Report



Parameters	Unit	Color Code for Wind Speed and Pollution Concentration Class						
		0.3 ≤ WS < 1.4	1.4 ≤ WS < 3.1	3.1 ≤ WS < 7.8	7.8 ≤ WS < 10.8	10.8 ≤ WS < 13.6	WS ≥ 13.6	
SO ₂	ppb	0 ≤ C < 1	1 ≤ C < 5	5 ≤ C < 10	10 ≤ C < 57	57 ≤ C < 172	C ≥ 172	
NO ₂	ppb	0 ≤ C < 5	5 ≤ C < 15	15 ≤ C < 30	30 ≤ C < 100	100 ≤ C < 212	C ≥ 212	
H ₂ S	ppb	0 ≤ C < 1	1 ≤ C < 3.6	3.6 ≤ C < 5	5 ≤ C < 8	8 ≤ C < 10.8	C ≥ 10.8	
PM _{2.5}	μg/m ³	0 ≤ C < 2	2 ≤ C < 4	4 ≤ C < 10	10 ≤ C < 20	20 ≤ C < 30	C ≥ 30	

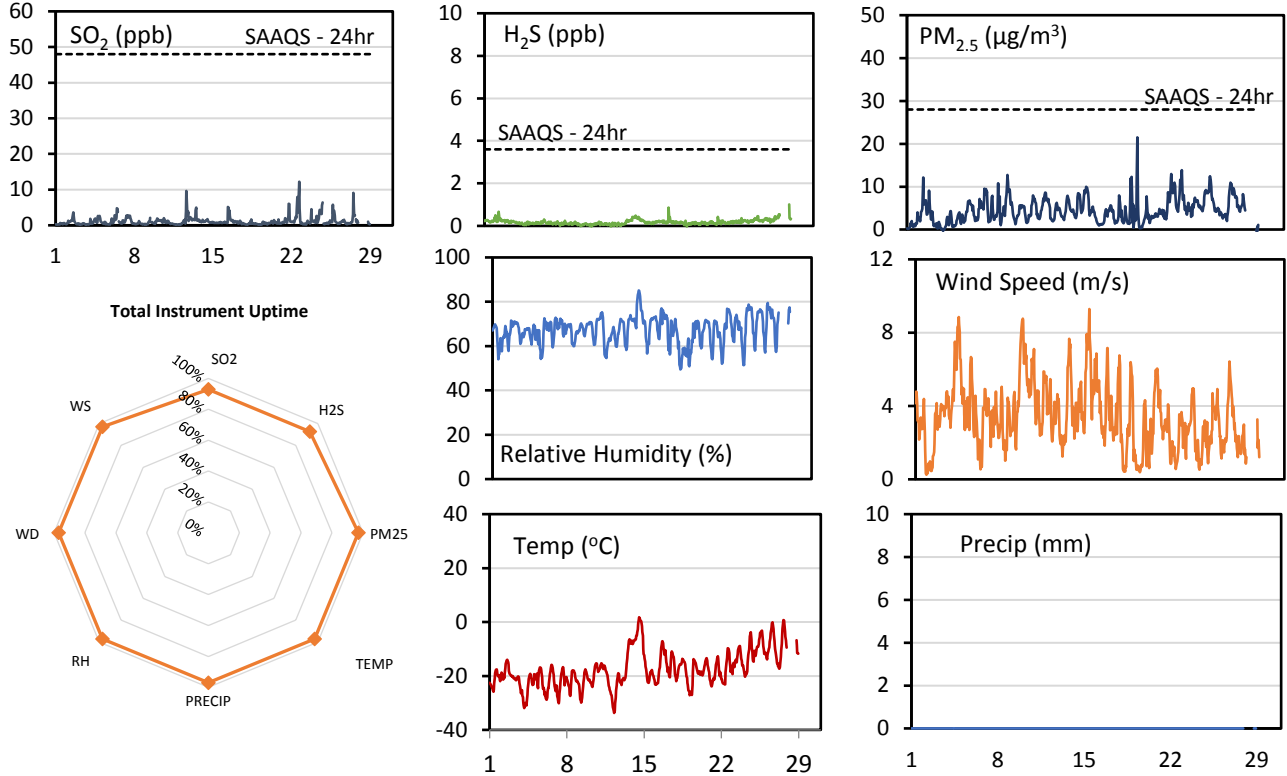
Monthly Update

- Achieved >94% of scheduled uptime for all parameters
- Downtime of 4% results from routine daily Internal Zeroes and Spans
- Calibration performed February 28th

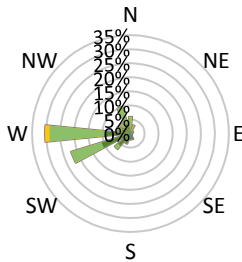
SESAA Wauchope Station - February 2018 Summary Report

Pollutants		Month Records		24-Hour Records				1-Hour Records			
Name	Conc. Unit	Avg. Conc.	Total Uptime	Maximum		SAAQS Standard	Exceed Days	Maximum		SAAQS Standard	Exceed Hours
				Conc.	Time			Conc.	Time		
SO ₂	ppb	1.1	93%	2.7	Feb-22	48	0	12.2	Feb-22 16:00	172	0
H ₂ S	ppb	0.2	93%	0.5	Feb-28	3.6	0	1.0	Feb-28 19:00	11	0
PM _{2.5}	µg/m ³	4.5	97%	6.6	Feb-24	28	0	21.5	Feb-19 08:00	-	-

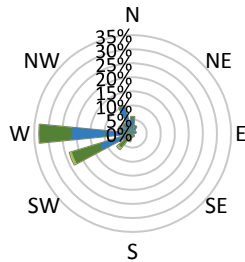
SAAQS: Saskatchewan Ambient Air Quality Standards



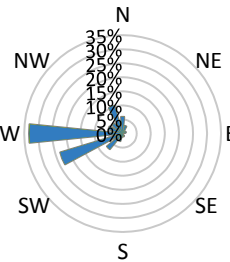
Wind Rose



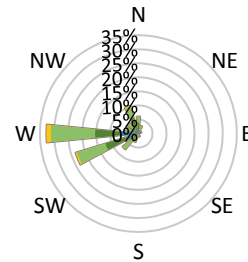
SO₂ Pollutant Rose



H₂S Pollutant Rose



PM_{2.5} Pollutant Rose



Parameters	Unit	Color Code for Wind Speed and Pollution Concentration Class					
Wind Speed	m/s	0.3 ≤ WS < 1.4	1.4 ≤ WS < 3.1	3.1 ≤ WS < 7.8	7.8 ≤ WS < 10.8	10.8 ≤ WS < 13.6	WS ≥ 13.6
SO ₂	ppb	0 ≤ C < 1	1 ≤ C < 5	5 ≤ C < 10	10 ≤ C < 57	57 ≤ C < 172	C ≥ 172
H ₂ S	ppb	0 ≤ C < 1	1 ≤ C < 3.6	3.6 ≤ C < 5	5 ≤ C < 8	8 ≤ C < 10.8	C ≥ 10.8
PM _{2.5}	µg/m ³	0 ≤ C < 2	2 ≤ C < 4	4 ≤ C < 10	10 ≤ C < 20	20 ≤ C < 30	C ≥ 30

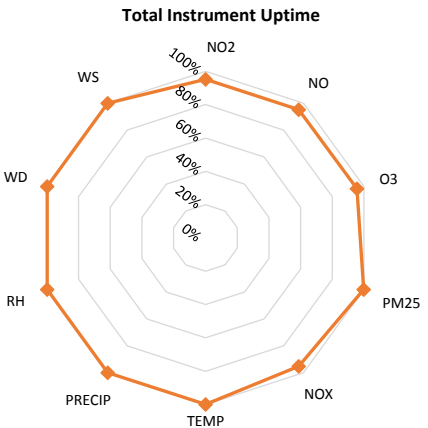
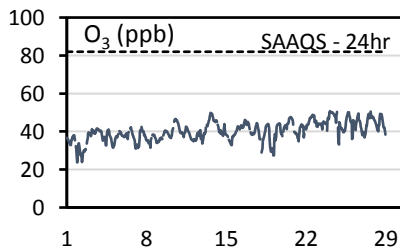
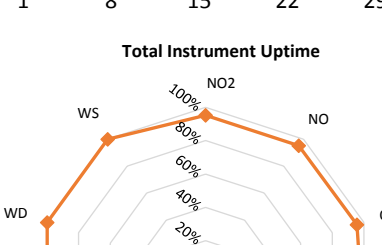
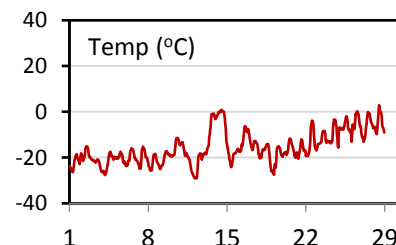
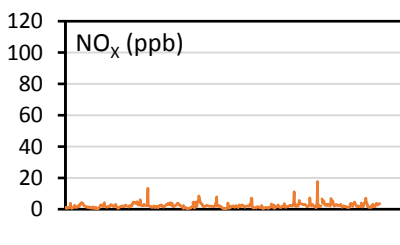
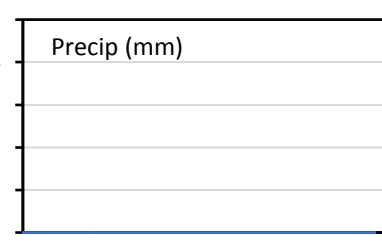
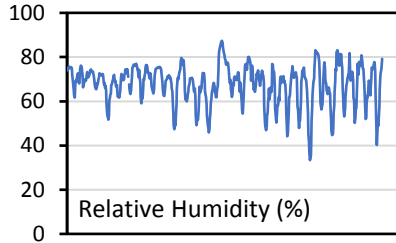
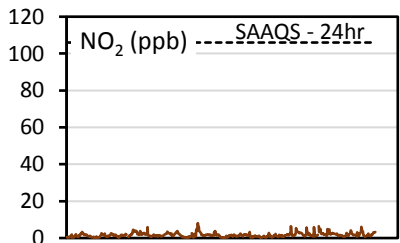
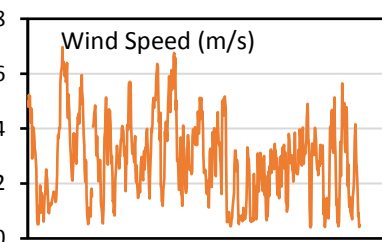
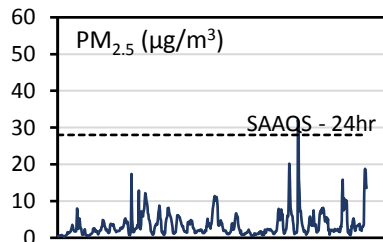
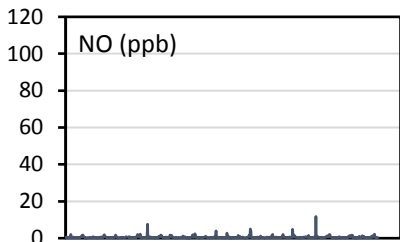
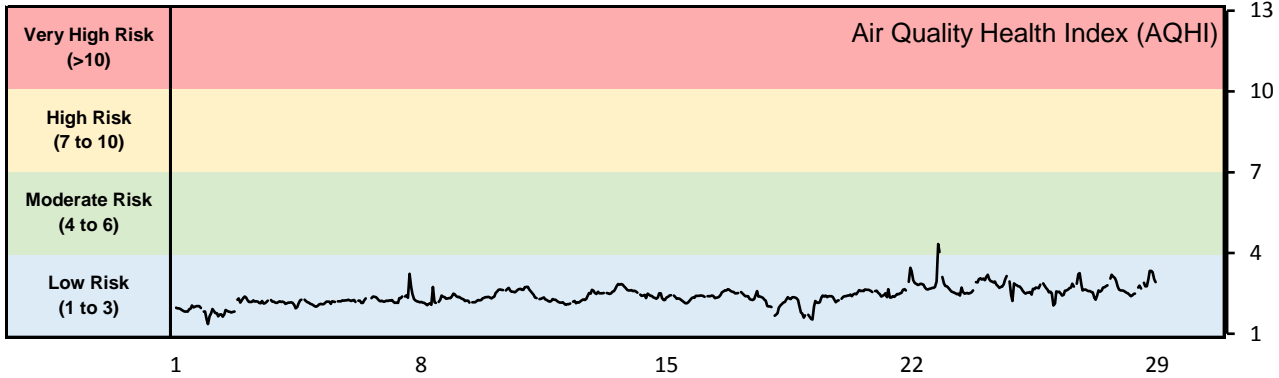
Monthly Update

- Achieved >93% of scheduled uptime for all parameters
- Downtime of 4% results from routine daily Internal Zeroes and Spans
- Data loss due to operational issues

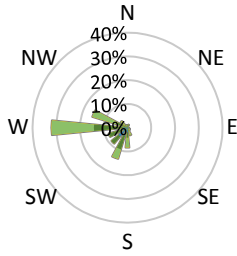
SESAA Wawota Station - February 2018 Summary Report

Pollutants		Month Records		24-Hour Records				1-Hour Records			
Name	Conc. Unit	Avg. Conc.	Uptime	Maximum		SAAQS Standard	Exceed Days	Maximum		SAAQS Standard	Exceed Hours
				Conc.	Time			Conc.	Time		
NO	ppb	0.5	95%	1.0	Feb-23	-	-	11.8	Feb-23 10:00	-	-
NO ₂	ppb	1.7	95%	2.9	Feb-07	106	0	8.1	Feb-12 21:00	159	0
NO _x	ppb	2.2	95%	3.6	Feb-07	-	-	17.7	Feb-23 10:00	-	-
O ₃	ppb	40.2	96%	47.1	Feb-24	-	-	50.7	Feb-24 02:00	82	0
PM _{2.5}	µg/m ³	3.5	100%	8.1	Feb-22	28	0	32.1	Feb-22 18:00	-	-

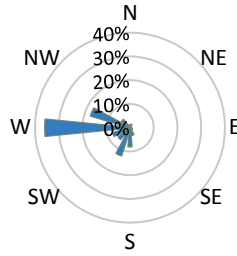
SAAQS: Saskatchewan Ambient Air Quality Standards



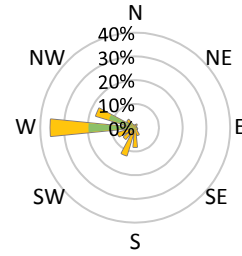
Wind Rose



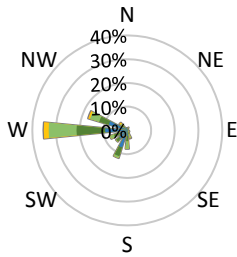
NO₂ Pollutant Rose



O₃ Pollutant Rose



PM_{2.5} Pollutant Rose



Parameters	Unit	Color Code for Wind Speed and Pollution Concentration Class						
		0.3 ≤ WS < 1.4	1.4 ≤ WS < 3.1	3.1 ≤ WS < 7.8	7.8 ≤ WS < 10.8	10.8 ≤ WS < 13.6	WS ≥ 13.6	
O ₃	ppb	0 ≤ C < 10	10 ≤ C < 20	20 ≤ C < 40	40 ≤ C < 60	60 ≤ C < 82	C ≥ 82	
NO ₂	ppb	0 ≤ C < 5	5 ≤ C < 15	15 ≤ C < 30	30 ≤ C < 100	100 ≤ C < 212	C ≥ 212	
PM _{2.5}	µg/m ³	0 ≤ C < 2	2 ≤ C < 4	4 ≤ C < 10	10 ≤ C < 20	20 ≤ C < 30	C ≥ 30	

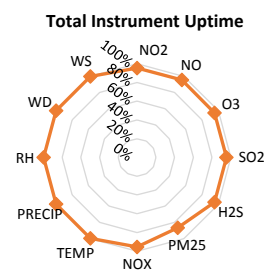
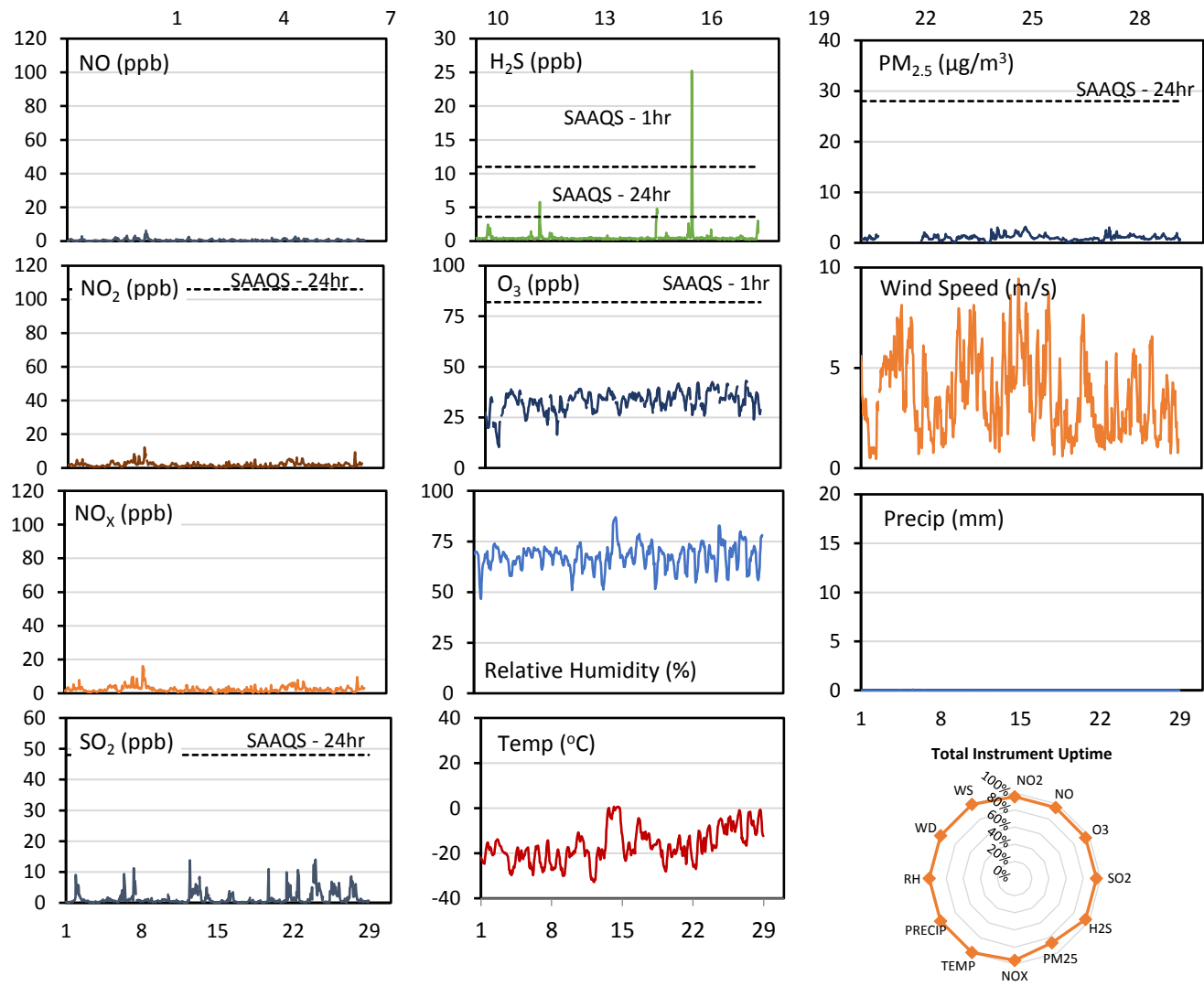
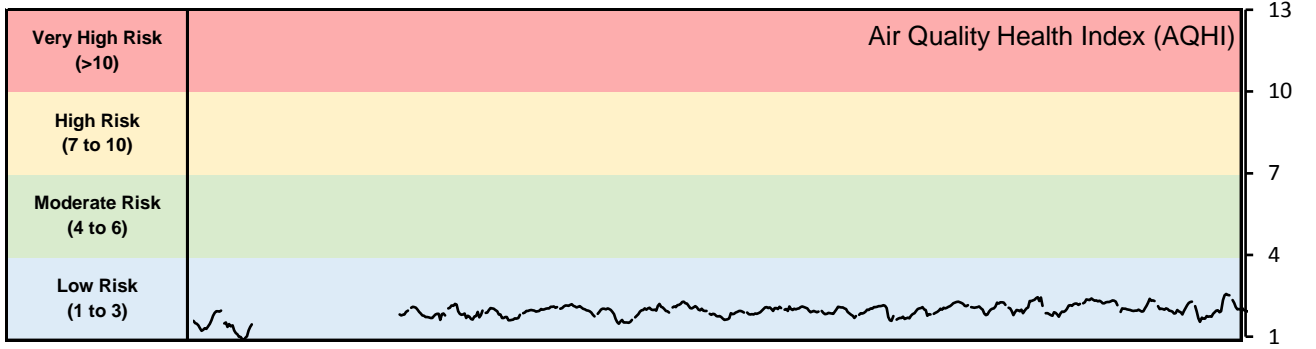
Monthly Update

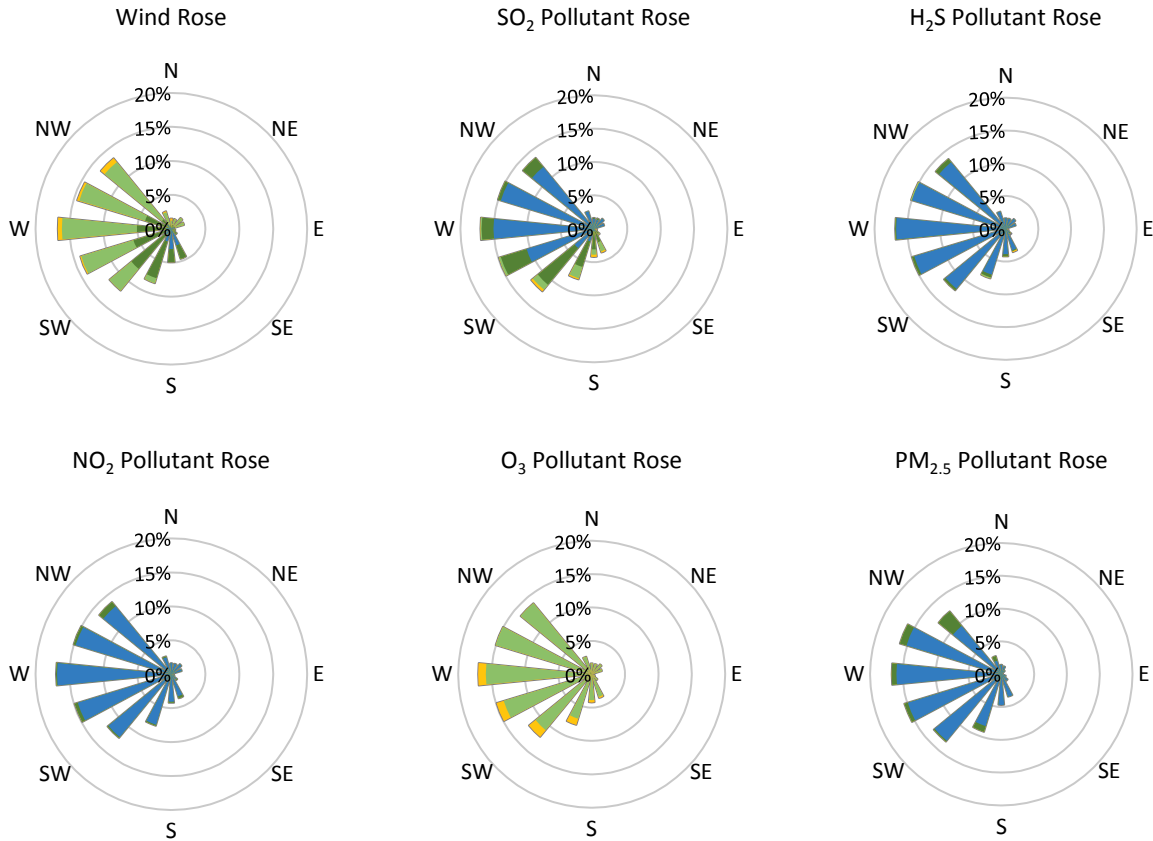
- Achieved >95% of scheduled uptime for all parameters
- Downtime of 4% results from routine daily Internal Zeroes and Spans

SESAA Weyburn Station - February 2018 Summary Report

Pollutants		Month Records		24-Hour Records				1-Hour Records			
Name	Conc. Unit	Avg. Conc.	Uptime	Maximum		SAAQS Standard	Exceed Days	Maximum		SAAQS Standard	Exceed Hours
				Conc.	Time			Conc.	Time		
NO	ppb	0.5	95%	1.5	Feb-08	-	-	6.2	Feb-08 10:00	-	-
NO ₂	ppb	1.9	95%	4.0	Feb-08	106	0	12.2	Feb-08 07:00	159	0
NO _x	ppb	2.4	95%	5.5	Feb-08	-	-	16.2	Feb-08 07:00	-	-
SO ₂	ppb	1.5	95%	4.1	Feb-24	48	0	14.0	Feb-24 01:00	172	0
H ₂ S	ppb	0.5	95%	2.2	Feb-22	3.6	0	25.2	Feb-22 09:00	11	1
O ₃	ppb	33.0	95%	38.8	Feb-24	-	-	43.2	Feb-27 12:00	82	0
PM _{2.5}	µg/m ³	1.1	87%	2.1	Feb-15	28	0	3.2	Feb-15 10:00	-	-

SAAQS: Saskatchewan Ambient Air Quality Standards





Parameters	Unit	Color Code for Wind Speed and Pollution Concentration Class						
Wind Speed	m/s	0.3 ≤ WS < 1.4	1.4 ≤ WS < 3.1	3.1 ≤ WS < 7.8	7.8 ≤ WS < 10.8	10.8 ≤ WS < 13.6	WS ≥ 13.6	
SO ₂	ppb	0 ≤ C < 1	1 ≤ C < 5	5 ≤ C < 10	10 ≤ C < 57	57 ≤ C < 172	C ≥ 172	
NO ₂	ppb	0 ≤ C < 5	5 ≤ C < 15	15 ≤ C < 30	30 ≤ C < 100	100 ≤ C < 212	C ≥ 212	
H ₂ S	ppb	0 ≤ C < 1	1 ≤ C < 3.6	3.6 ≤ C < 5	5 ≤ C < 8	8 ≤ C < 10.8	C ≥ 10.8	
O ₃	ppb	0 ≤ C < 10	10 ≤ C < 20	20 ≤ C < 40	40 ≤ C < 60	60 ≤ C < 82	C ≥ 82	
PM _{2.5}	µg/m ³	0 ≤ C < 2	2 ≤ C < 4	4 ≤ C < 10	10 ≤ C < 20	20 ≤ C < 30	C ≥ 30	

Monthly Update

- Achieved >95% of scheduled uptime for all parameters except PM_{2.5} (87%)
- Downtime of 4% due to routine daily Internal Zeroes and Spans
- Data loss due to operational issues

Exceedance Summary (1- Hour Average - Exceedances Highlighted)

Exceedance Time	AQHI	NO ₂	NO	SO ₂	O ₃	NO _x	H ₂ S	PM _{2.5}	Temp	WD	WS
		ppb	ppb	ppb	ppb	ppb	ppb	µg/m ³	°C	deg	m/s
Feb-22 09:00	2.0	3.8	2.2	6.5	31.8	6.0	25.2	1.4	-22.5	143.8	1.1