

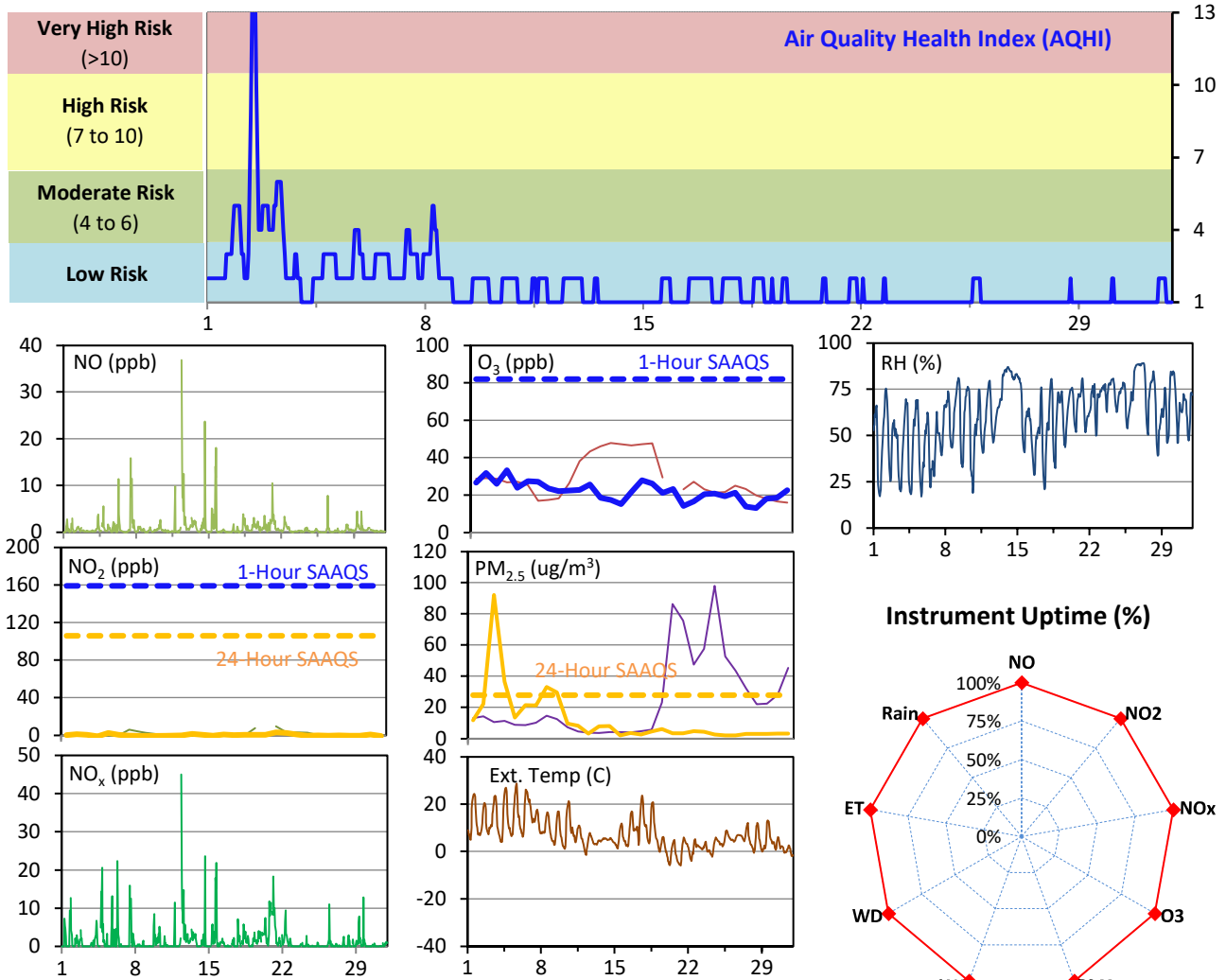
# SESAA Esterhazy Station - October 2021 Summary Report

Pollutants		Month Records		24-Hour Records				1-Hour Records			
Name	Conc. Unit	Avg. Conc.	Uptime	Maximum		SAAQS Standard	Exceed Days	Maximum		SAAQS Standard	Exceed Hours
				Conc.	Time			Conc.	Time		
NO	ppb	0.9	100.0%	4.2	Oct-12	-	-	36.9	Oct-12 09:00	-	-
NO <sub>2</sub>	ppb	0.8	100.0%	3.2	Oct-20	106	0	15.1	Oct-04 20:00	159	0
NO <sub>x</sub>	ppb	1.6	100.0%	5.6	Oct-12	-	-	45.1	Oct-12 09:00	-	-
O <sub>3</sub>	ppb	22	100.0%	33	Oct-3	-	-	51	Oct-05 16:00	82	0
PM <sub>2.5</sub>	ug/m3	12	100.0%	92	Oct-2	28	4	354	Oct-02 10:00	-	-

SAAQS: Saskatchewan Ambient Air Quality Standards

\* Air Quality Standard refers to Saskatchewan Ambient Air Quality Standards (SAAQS).

\* Dotted lines are for SAAQS limits and solid lines are for averages.



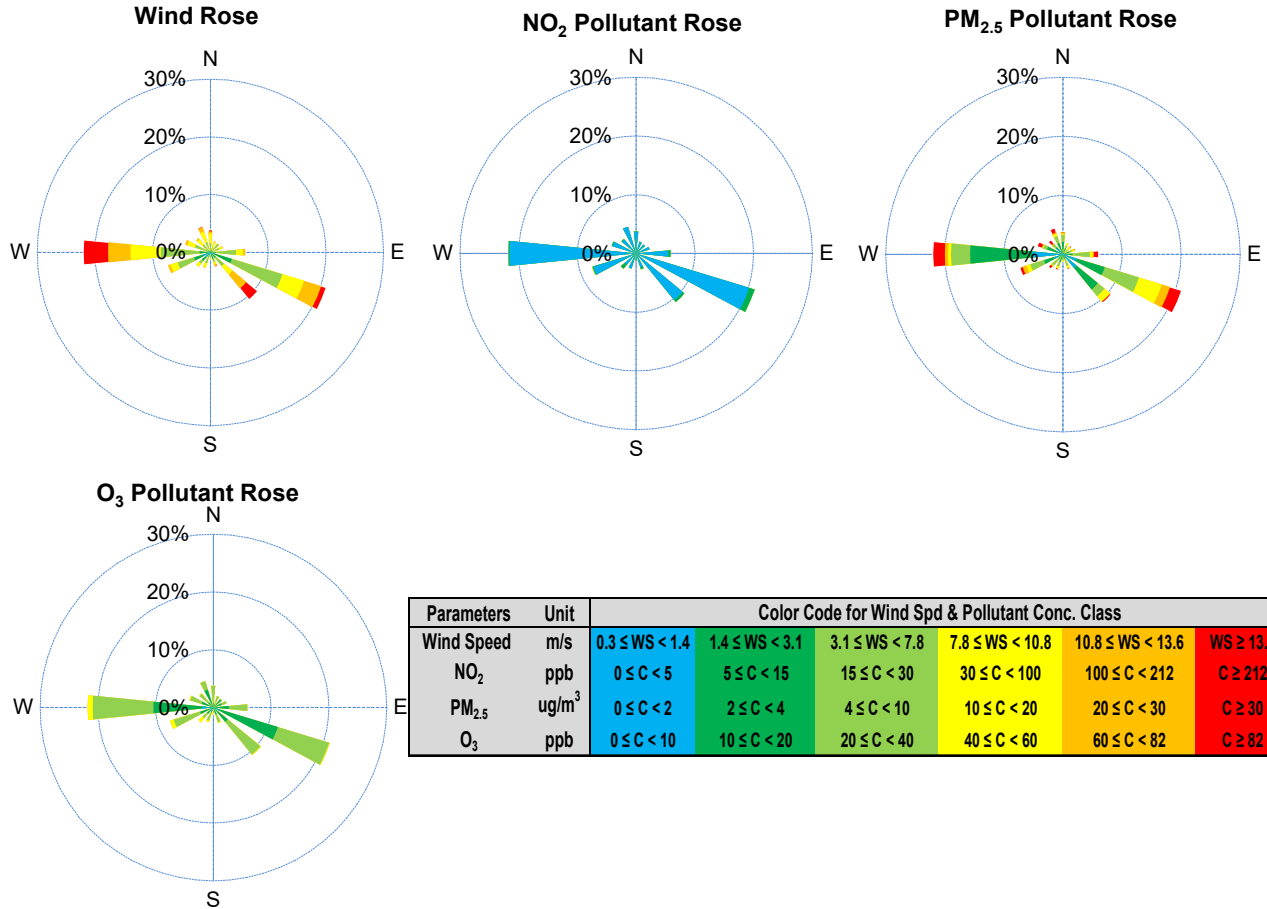
## Monthly Update

\*All data has been slope, intercept, and baseline corrected. Data may change after validation process.

\*All compliance parameters were within the Saskatchewan Ambient Air Quality Standards with the exception of four 24-hour PM<sub>2.5</sub> exceedances attributed to wildfire smoke in the area.

\*All compliance parameters were above 90% operational.

# SESAA Esterhazy Station - October 2021 Summary Report



Parameters	Unit	Color Code for Wind Spd & Pollutant Conc. Class					
Wind Speed	m/s	0.3 ≤ WS < 1.4	1.4 ≤ WS < 3.1	3.1 ≤ WS < 7.8	7.8 ≤ WS < 10.8	10.8 ≤ WS < 13.6	WS ≥ 13.6
NO <sub>2</sub>	ppb	0 ≤ C < 5	5 ≤ C < 15	15 ≤ C < 30	30 ≤ C < 100	100 ≤ C < 212	C ≥ 212
PM <sub>2.5</sub>	ug/m <sup>3</sup>	0 ≤ C < 2	2 ≤ C < 4	4 ≤ C < 10	10 ≤ C < 20	20 ≤ C < 30	C ≥ 30
O <sub>3</sub>	ppb	0 ≤ C < 10	10 ≤ C < 20	20 ≤ C < 40	40 ≤ C < 60	60 ≤ C < 82	C ≥ 82

Exceedance Summary (24-Hour Average)											
Pollutant	Conc. ppb	Exceedance Date mmm-dd	WS m/s	WD deg	AQHI -	Rain mm	NO ppb	NO <sub>2</sub> ppb	NO <sub>x</sub> ppb	O <sub>3</sub> ppb	PM <sub>2.5</sub> ug/m <sup>3</sup>
PM <sub>2.5</sub>	92	Oct-2	4.4	260	6	0.0	0.5	-	-	26	92
PM <sub>2.5</sub>	37	Oct-3	6.4	207	4	0.0	0.2	-	-	33	37
PM <sub>2.5</sub>	33	Oct-7	7.3	261	3	0.0	2.1	-	-	24	33
PM <sub>2.5</sub>	30	Oct-8	4.9	143	3	0.0	0.4	-	-	22	30

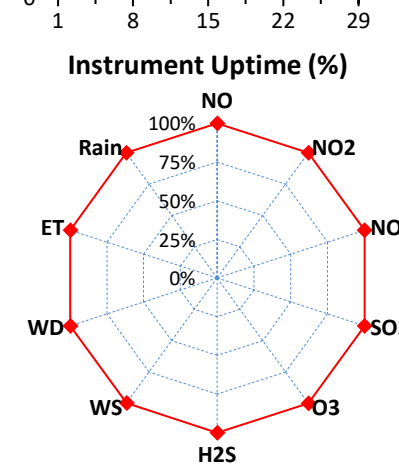
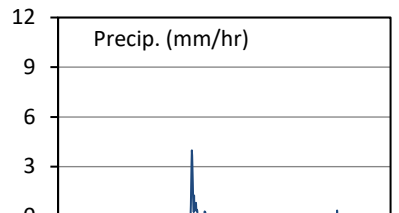
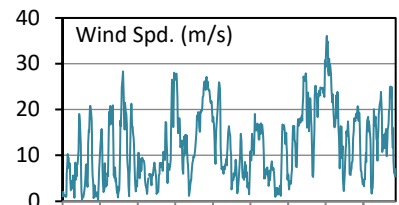
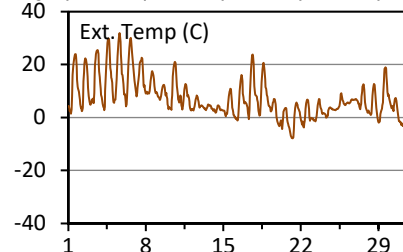
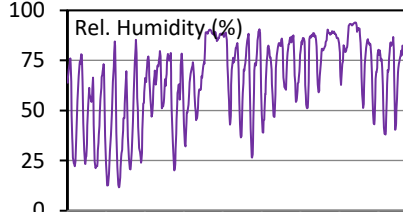
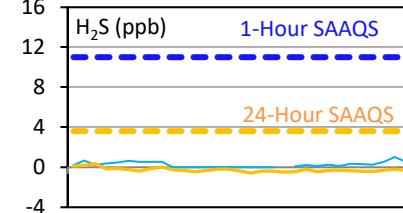
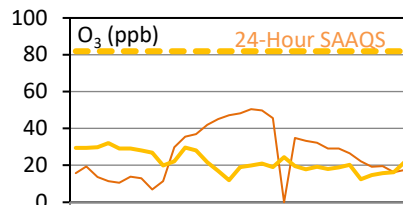
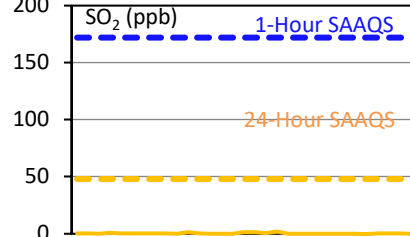
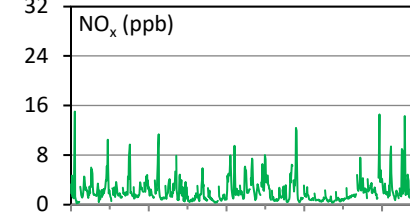
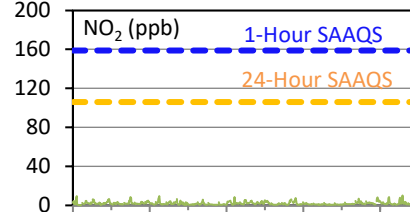
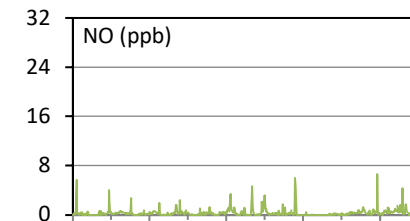
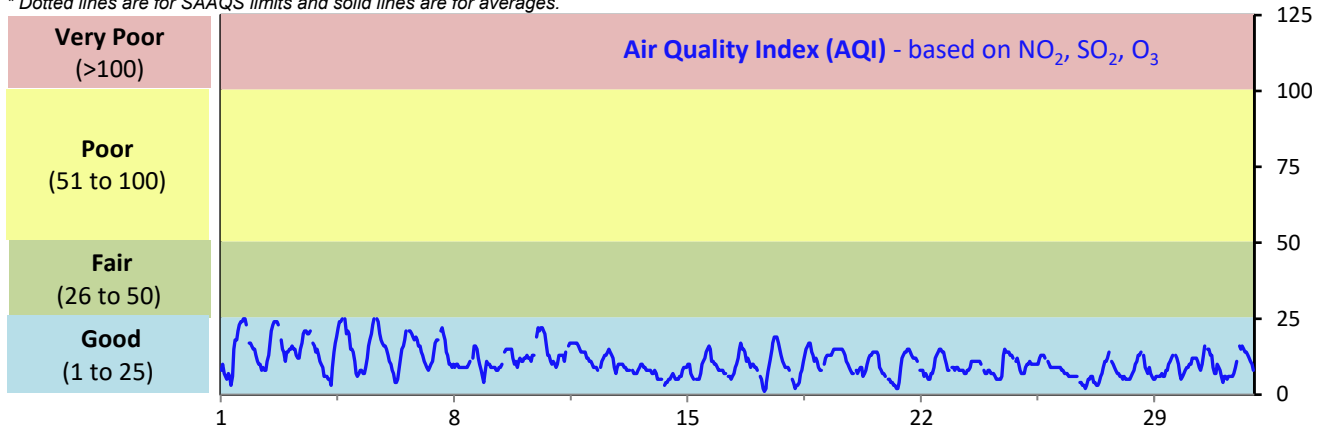
# SESAA Glen Ewen Station - October 2021 Summary Report

Pollutants		Month Records		24-Hour Records				1-Hour Records			
Name	Conc. Unit	Avg. Conc.	Uptime	Maximum		SAAQS Standard	Exceed Days	Maximum		SAAQS Standard	Exceed Hours
				Conc.	Time			Conc.	Time		
NO	ppb	0.3	100.0%	0.9	Oct-15	-	-	6.7	Oct-28 18:00	-	-
NO <sub>2</sub>	ppb	1.9	100.0%	2.9	Oct-28	106	0	10.0	Oct-31 01:00	159	0
NO <sub>x</sub>	ppb	2.2	100.0%	3.6	Oct-18	-	-	15.0	Oct-01 08:00	-	-
SO <sub>2</sub>	ppb	0.3	100.0%	1.4	Oct-15	48	0	11.7	Oct-18 11:00	172	0
O <sub>3</sub>	ppb	22	100.0%	32	Oct-3	-	-	51	Oct-01 16:00	82	0
H <sub>2</sub> S	ppb	< 0.1	100.0%	0.3	Oct-2	3.6	0	1.0	Oct-02 05:00	11	0

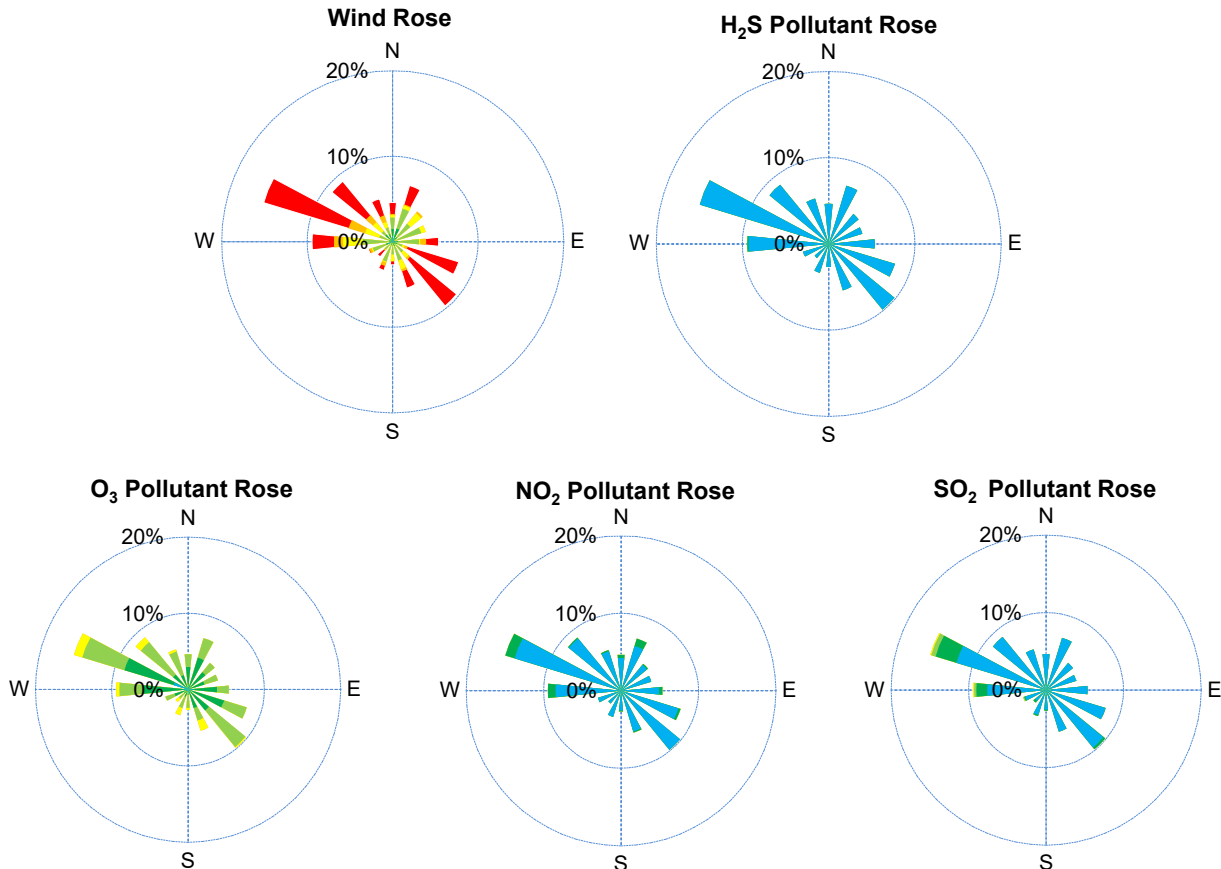
SAAQS: Saskatchewan Ambient Air Quality Standards

\* Air Quality Standard refers to Saskatchewan Ambient Air Quality Standards (SAAQS).

\* Dotted lines are for SAAQS limits and solid lines are for averages.



# SESAA Glen Ewen Station - October 2021 Summary Report



Parameters	Unit	Color Code for Wind Spd & Pollutant Conc. Class						
Wind Speed	m/s	$0.3 \leq WS < 1.4$	$1.4 \leq WS < 3.1$	$3.1 \leq WS < 7.8$	$7.8 \leq WS < 10.8$	$10.8 \leq WS < 13.6$	$WS \geq 13.6$	
SO <sub>2</sub>	ppb	$0 \leq C < 1$	$1 \leq C < 5$	$5 \leq C < 10$	$10 \leq C < 57$	$57 \leq C < 172$	$C \geq 172$	
NO <sub>2</sub>	ppb	$0 \leq C < 5$	$5 \leq C < 15$	$15 \leq C < 30$	$30 \leq C < 100$	$100 \leq C < 212$	$C \geq 212$	
O <sub>3</sub>	ppb	$0 \leq C < 10$	$10 \leq C < 20$	$20 \leq C < 40$	$40 \leq C < 60$	$60 \leq C < 82$	$C \geq 82$	
H <sub>2</sub> S	ppb	$0 \leq C < 1$	$1 \leq C < 3.6$	$3.6 \leq C < 5$	$5 \leq C < 8$	$8 \leq C < 10.8$	$C \geq 10.8$	

## Monthly Update

\*All data has been slope, intercept, and baseline corrected. Data may change after validation process.

\*All compliance parameters were within the Saskatchewan Ambient Air Quality Standards.

\*All compliance parameters are greater than 90% operational.

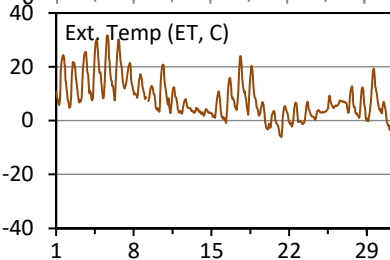
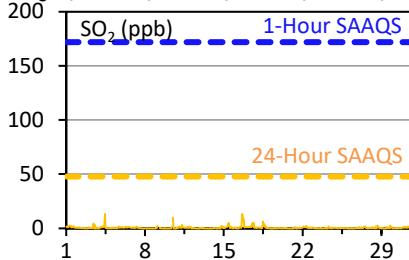
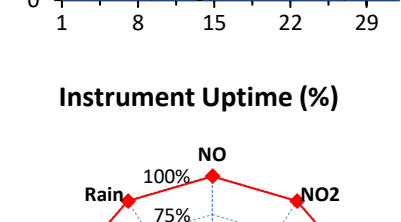
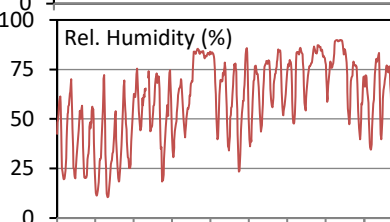
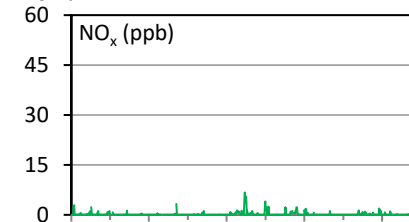
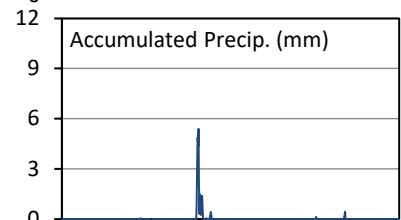
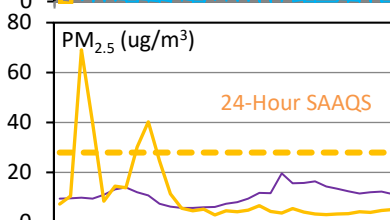
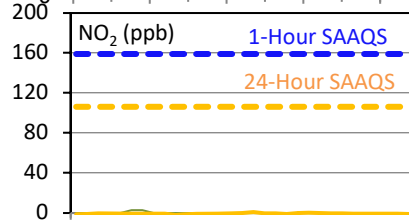
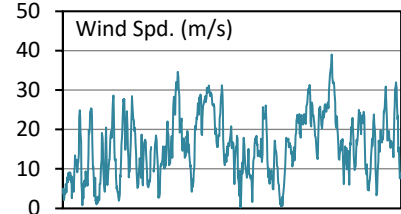
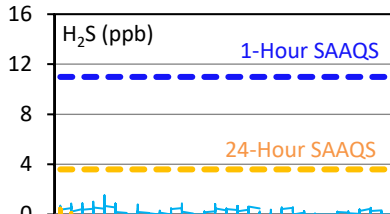
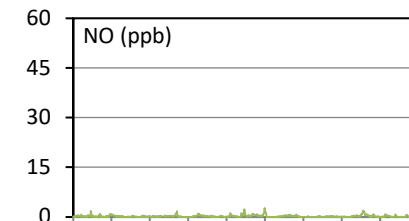
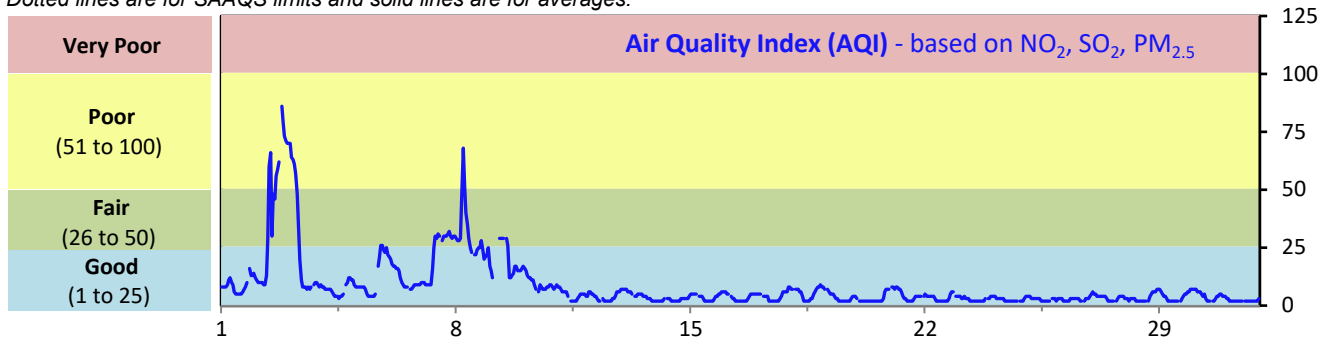
# SESAA Oxbow Station - October 2021 Summary Report

Pollutants		Month Records		24-Hour Records				1-Hour Records			
Name	Conc. Unit	Avg. Conc.	Uptime	Maximum		SAAQS Standard	Exceed Days	Maximum		SAAQS Standard	Exceed Hours
				Conc.	Time			Conc.	Time		
NO	ppb	0.2	99.4%	0.7	Oct-27	-	-	2.6	Oct-18 11:00	-	-
NO <sub>2</sub>	ppb	0.1	99.4%	< 0.1	Sep-21	106	0	5.0	Oct-16 17:00	159	0
NO <sub>x</sub>	ppb	0.2	99.4%	1.4	Sep-21	-	-	6.8	Oct-16 15:00	-	-
SO <sub>2</sub>	ppb	0.6	99.4%	2.5	Oct-16	48	0	13.4	Oct-04 10:00	172	0
H <sub>2</sub> S	ppb	0.2	99.4%	0.5	Oct-12	3.6	0	1.5	Oct-05 22:00	11	0
PM <sub>2.5</sub>	ug/m <sup>3</sup>	11	99.5%	69	Oct-2	28	4	154	Oct-02 18:00	-	-

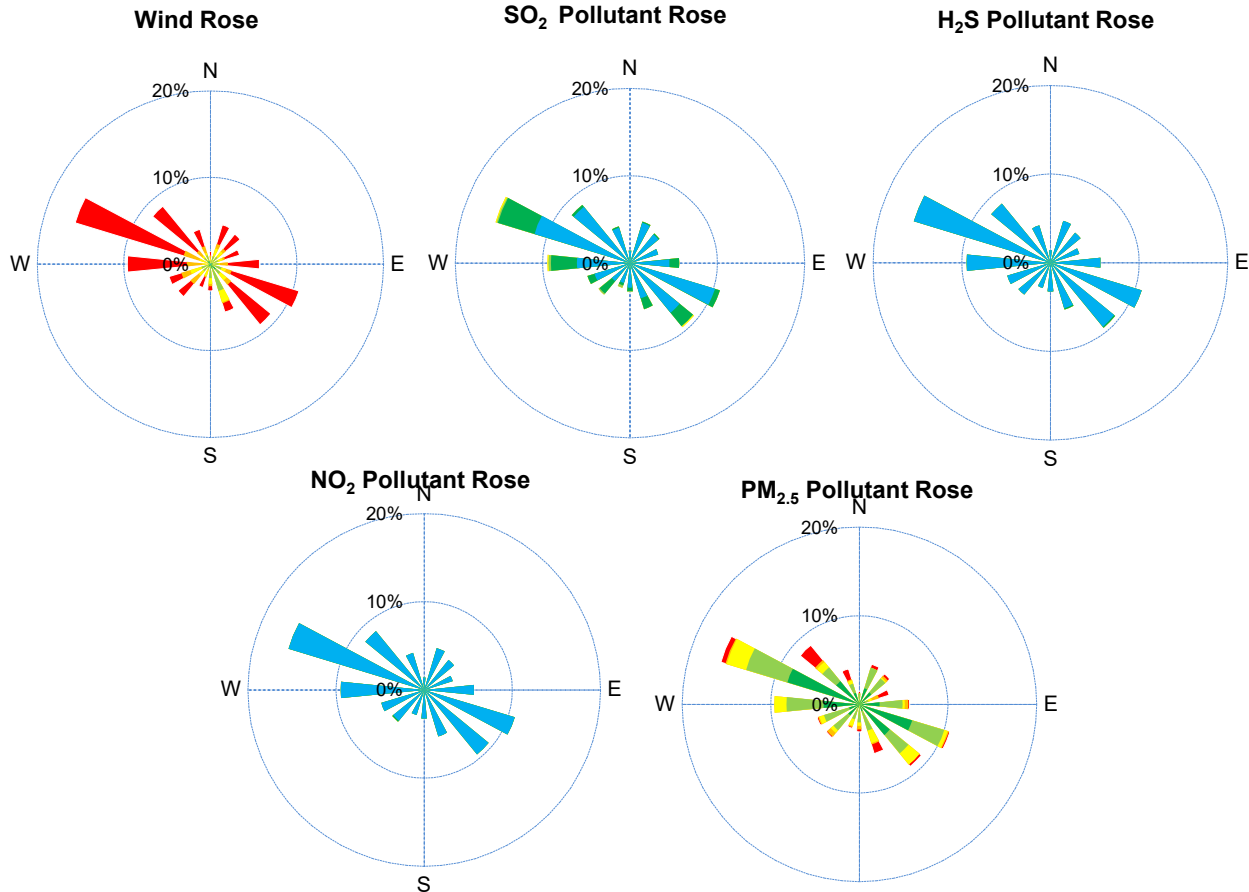
SAAQS: Saskatchewan Ambient Air Quality Standards

\* Air Quality Standard refers to Saskatchewan Ambient Air Quality Standards (SAAQS).

\* Dotted lines are for SAAQS limits and solid lines are for averages.



# SESAA Oxbow Station - October 2021 Summary Report



Parameters	Unit	Color Code for Wind Spd & Pollutant Conc. Class						
Wind Speed	m/s	0.3 ≤ WS < 1.4	1.4 ≤ WS < 3.1	3.1 ≤ WS < 7.8	7.8 ≤ WS < 10.8	10.8 ≤ WS < 13.6	WS ≥ 13.6	
SO <sub>2</sub>	ppb	0 ≤ C < 1	1 ≤ C < 5	5 ≤ C < 10	10 ≤ C < 57	57 ≤ C < 172	C ≥ 172	
NO <sub>2</sub>	ppb	0 ≤ C < 5	5 ≤ C < 15	15 ≤ C < 30	30 ≤ C < 100	100 ≤ C < 212	C ≥ 212	
H <sub>2</sub> S	ppb	0 ≤ C < 1	1 ≤ C < 3.6	3.6 ≤ C < 5	5 ≤ C < 8	8 ≤ C < 10.8	C ≥ 10.8	
PM <sub>2.5</sub>	ug/m <sup>3</sup>	0 ≤ C < 2	2 ≤ C < 4	4 ≤ C < 10	10 ≤ C < 20	20 ≤ C < 30	C ≥ 30	

## Monthly Update

\*All data has been slope, intercept, and baseline corrected. Data may change after validation process.

\*All compliance parameters were within the Saskatchewan Ambient Air Quality Standards with the exception of four 24-hour PM<sub>2.5</sub> exceedances attributed to wildfire smoke in the area.

\*All compliance parameters had greater than 90% operational uptime.

Exceedance Summary											
24-hour Exceedance Information			Summary of Other Parameters During Exceedance								
Pollutant	24-hr Avg Conc.	Exceedance Date mmm-dd	WS m/s	WD deg	AQI -	Rain mm	ET C	SO <sub>2</sub> ppb	NO <sub>2</sub> ppb	H <sub>2</sub> S ppb	PM <sub>2.5</sub> ug/m <sup>3</sup>
PM <sub>2.5</sub>	69	Oct-2	11.2	258	40	0.0	13.1	0.3	-	0.3	69
PM <sub>2.5</sub>	40	Oct-8	10.8	116	30	0.0	12.1	-	-	0.2	40
PM <sub>2.5</sub>	40	Oct-3	13.1	238	26	0.0	15.9	-	-	0.4	40
PM <sub>2.5</sub>	30	Oct-7	15.2	295	23	0.0	15.5	-	-	-	30

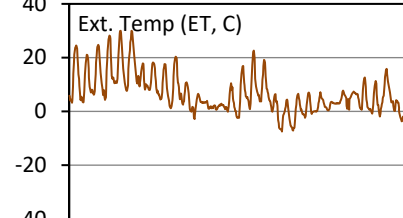
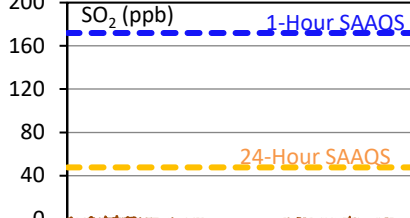
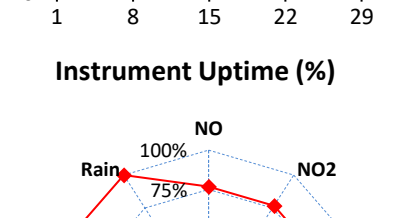
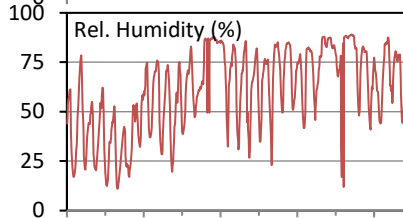
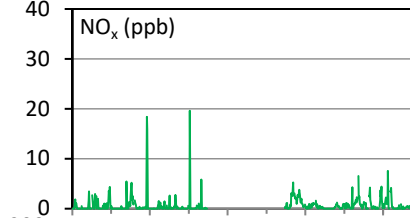
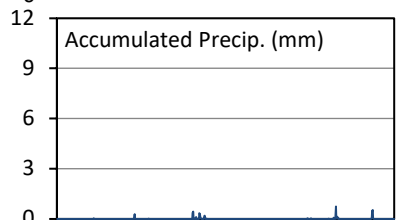
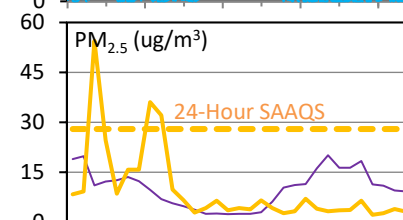
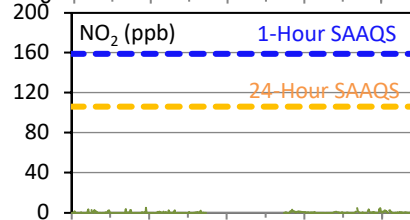
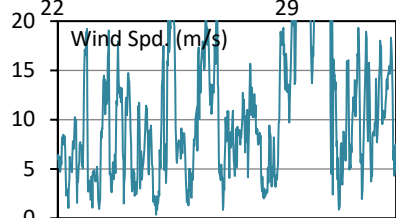
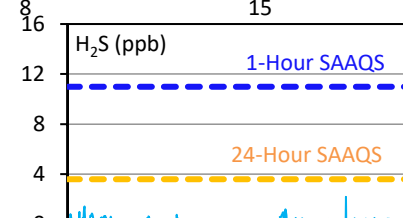
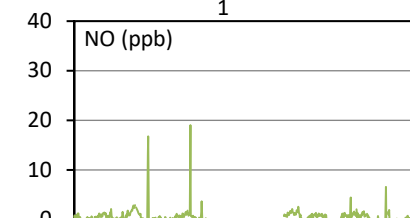
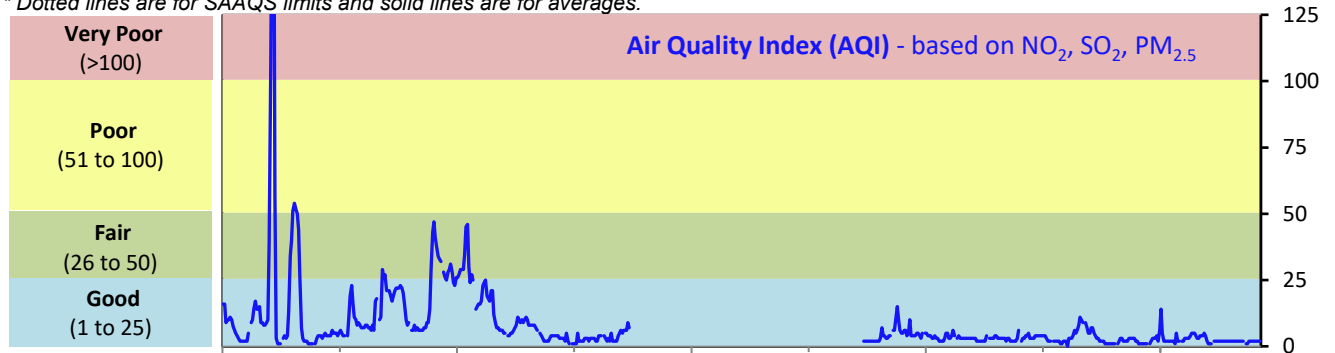
# SESAA Stoughton Station - October 2021 Summary Report

Pollutants		Month Records		24-Hour Records				1-Hour Records			
Name	Conc. Unit	Avg. Conc.	Uptime	Maximum		SAAQS Standard	Exceed Days	Maximum		SAAQS Standard	Exceed Hours
				Conc.	Time			Conc.	Time		
NO	ppb	0.6	76.8%	1.8	Oct-6	-	-	19.1	Oct-11 14:00	-	-
NO <sub>2</sub>	ppb	0.3	76.8%	0.9	Oct-29	106	0	5.1	Oct-07 17:00	159	0
NO <sub>x</sub>	ppb	0.7	76.8%	31.0	Sep-06	-	-	19.6	Oct-11 14:00	-	-
SO <sub>2</sub>	ppb	0.2	76.8%	1.0	Oct-6	48	0	2.9	Oct-05 09:00	172	0
H <sub>2</sub> S	ppb	0.2	76.8%	0.5	Oct-4	3.6	0	2.2	Oct-26 02:00	11	0
PM <sub>2.5</sub>	ug/m3	10	100.0%	55	Oct-2	28	3	472	Oct-02 12:00	-	-

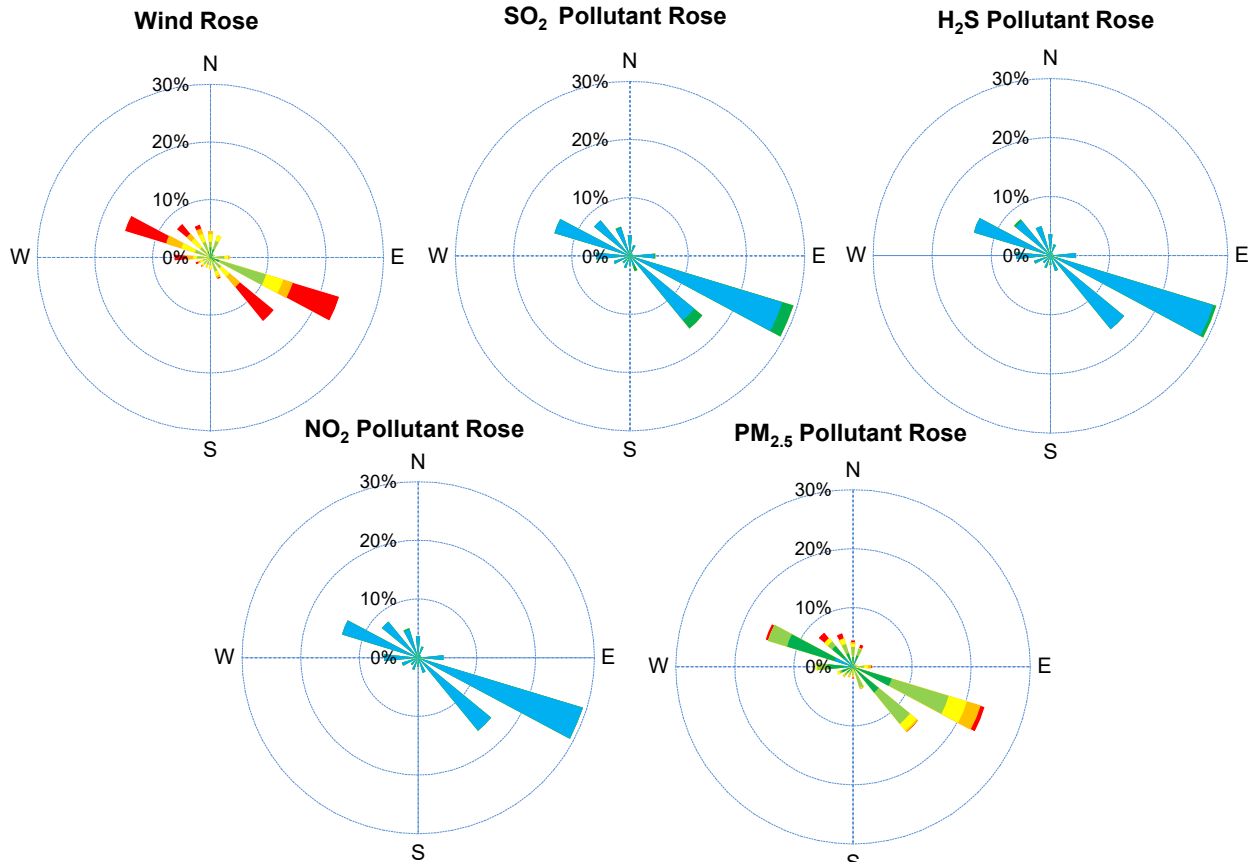
SAAQS: Saskatchewan Ambient Air Quality Standards

\* Air Quality Standard refers to Saskatchewan Ambient Air Quality Standards (SAAQS).

\* Dotted lines are for SAAQS limits and solid lines are for averages.



# SESAA Stoughton Station - October 2021 Summary Report



Parameters	Unit	Color Code for Wind Spd & Pollutant Conc. Class						
Wind Speed	m/s	0.3 ≤ WS < 1.4	1.4 ≤ WS < 3.1	3.1 ≤ WS < 7.8	7.8 ≤ WS < 10.8	10.8 ≤ WS < 13.6	WS ≥ 13.6	
SO <sub>2</sub>	ppb	0 ≤ C < 1	1 ≤ C < 5	5 ≤ C < 10	10 ≤ C < 57	57 ≤ C < 172	C ≥ 172	
NO <sub>2</sub>	ppb	0 ≤ C < 5	5 ≤ C < 15	15 ≤ C < 30	30 ≤ C < 100	100 ≤ C < 212	C ≥ 212	
H <sub>2</sub> S	ppb	0 ≤ C < 1	1 ≤ C < 3.6	3.6 ≤ C < 5	5 ≤ C < 8	8 ≤ C < 10.8	C ≥ 10.8	
PM <sub>2.5</sub>	ug/m <sup>3</sup>	0 ≤ C < 2	2 ≤ C < 4	4 ≤ C < 10	10 ≤ C < 20	20 ≤ C < 30	C ≥ 30	

## Monthly Update

- \*All data has been slope, intercept, and baseline corrected. Data may change after validation process.
- \*All compliance parameters were within the Saskatchewan Ambient Air Quality Standards with the exception of three 24-hour PM<sub>2.5</sub> exceedances attributed to wildfire smoke in the area.
- \*All compliance parameters were less than 90% operational.
- \*167 hours of data is flagged as "power failure" due to power issues on site.

Exceedance Summary (24-Hour Average)											
Pollutant (unit)	24-hr Avg Conc.	Exceedance Date mmm-dd	WS m/s	WD deg	AQI	Rain mm	ET C	SO <sub>2</sub> ppb	NO <sub>2</sub> ppb	H <sub>2</sub> S ppb	PM <sub>2.5</sub> ug/m <sup>3</sup>
24-hour Exceedance Information			WS	WD	AQI	Rain	ET	SO <sub>2</sub>	NO <sub>2</sub>	H <sub>2</sub> S	PM <sub>2.5</sub>
PM <sub>2.5</sub>	55.0	Oct-2	6.1	261	33	0.0	10.8	0.1	-	0.4	55
PM <sub>2.5</sub>	36.0	Oct-7	8.2	316	27	0.0	12.4	-	-	0.2	36
PM <sub>2.5</sub>	32.0	Oct-8	5.7	92	25	0.0	11.8	0.2	-	0.3	32



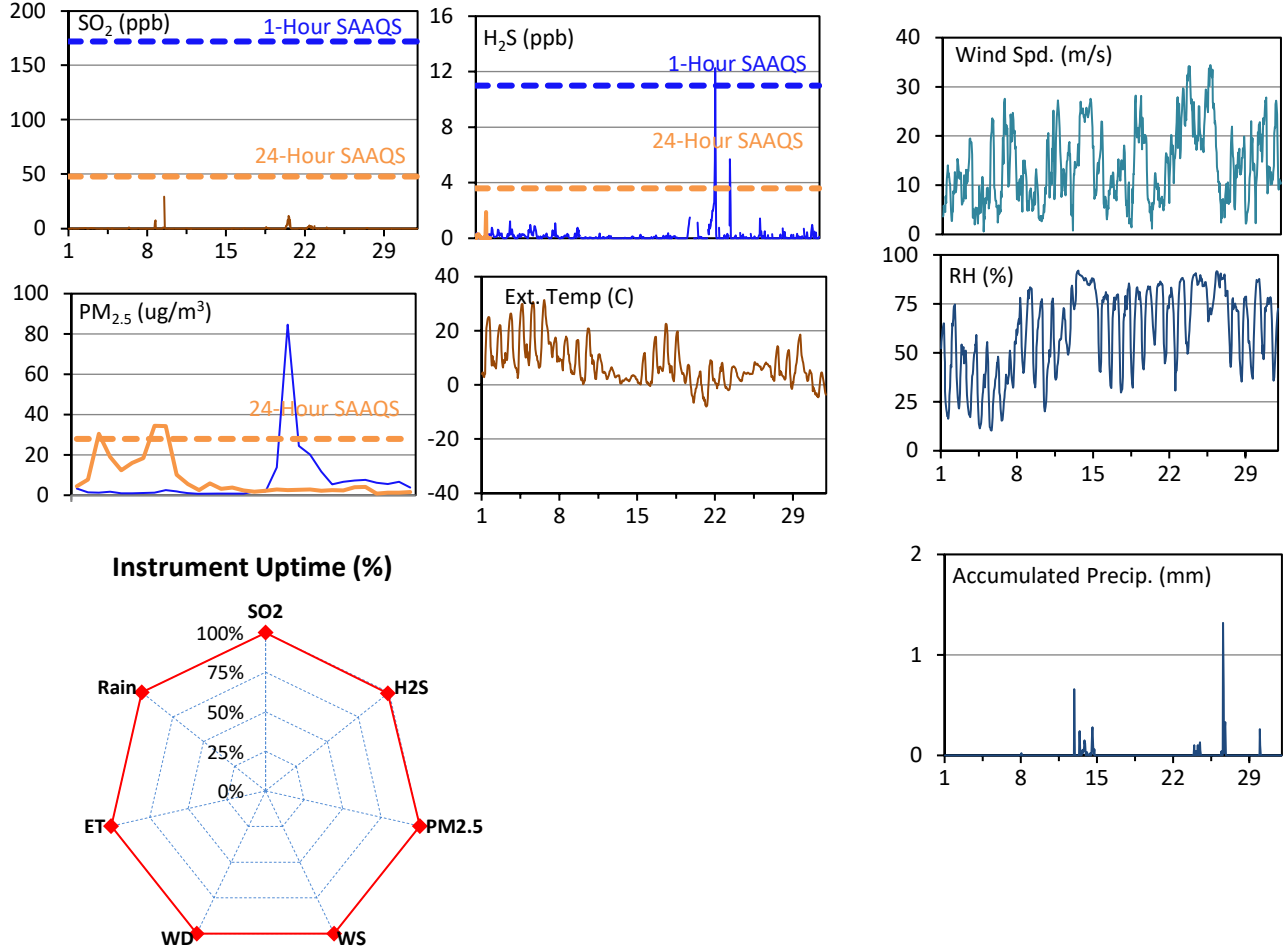
# SESAA Torquay Station - October 2021 Summary Report

Pollutants		Month Records		24-Hour Records				1-Hour Records			
Name	Conc. Unit	Avg. Conc.	Uptime	Maximum		SAAQS Standard	Exceed Days	Maximum		SAAQS Standard	Exceed Hours
				Conc.	Time			Conc.	Time		
SO <sub>2</sub>	ppb	0.2	100.0%	0.1	Oct-2	48	0	29.5	Oct-09 12:00	172	0
H <sub>2</sub> S	ppb	0.2	98.9%	1.9	Oct-22	3.6	0	12.3	Oct-22 14:00	11	1
PM <sub>2.5</sub>	ug/m3	8	100.0%	35	Oct-7	28	3	207	Oct-02 11:00	-	-

SAAQS: Saskatchewan Ambient Air Quality Standards

\* Air Quality Standard refers to Saskatchewan Ambient Air Quality Standards (SAAQS).

\* Dotted lines are for SAAQS limits and solid lines are for averages.



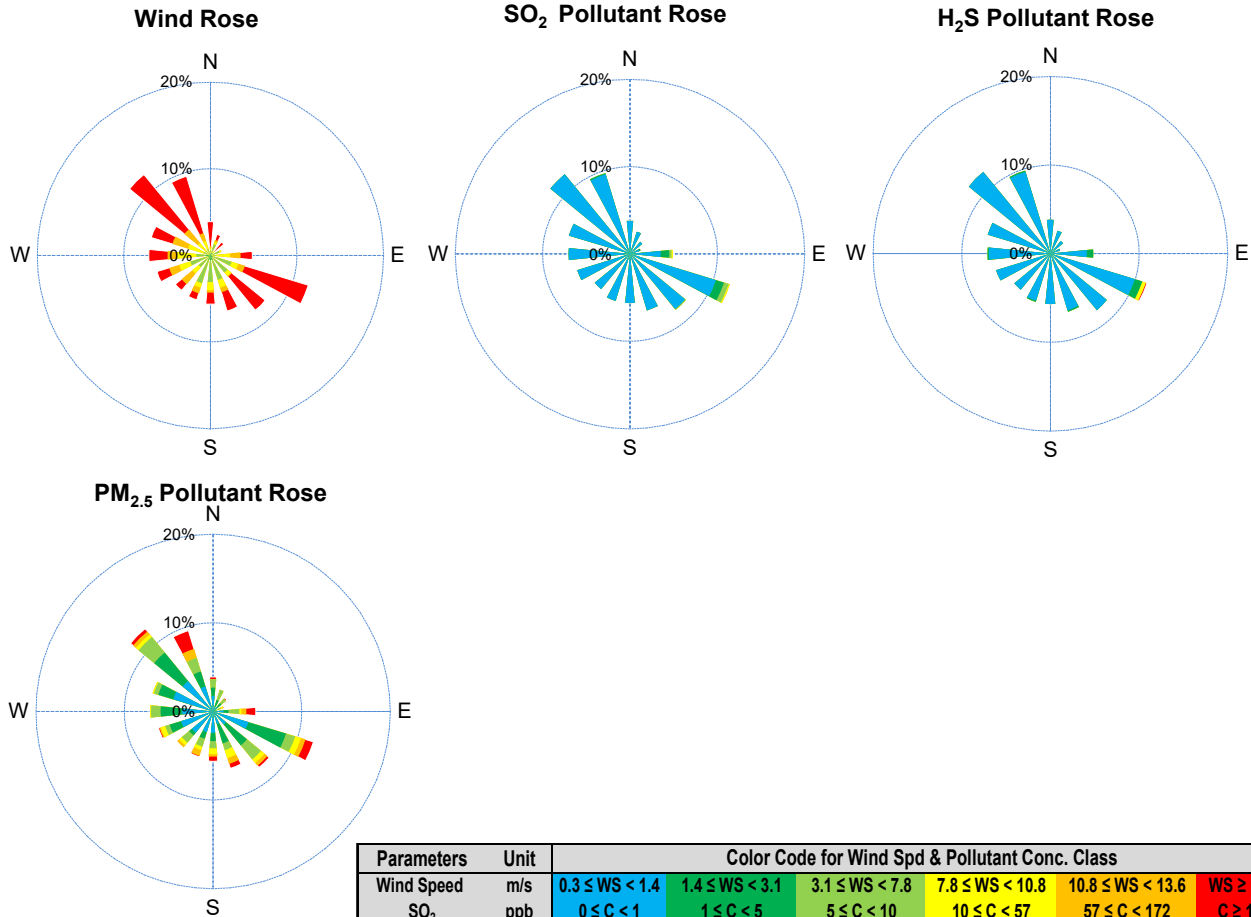
## Monthly Update

\*All data has been slope, intercept, and baseline corrected. Data may change after validation process.

\*All compliance parameters were within the Saskatchewan Ambient Air Quality Standards with the exception of one 1-hour H<sub>2</sub>S exceedance and three 24-hour PM<sub>2.5</sub> exceedances attributed to wildfire smoke in the area.

\*All compliance parameters are above 90% operational.

# SESAA Torquay Station - October 2021 Summary Report



Parameters	Unit	Color Code for Wind Spd & Pollutant Conc. Class					
Wind Speed	m/s	0.3 ≤ WS < 1.4	1.4 ≤ WS < 3.1	3.1 ≤ WS < 7.8	7.8 ≤ WS < 10.8	10.8 ≤ WS < 13.6	WS ≥ 13.6
SO <sub>2</sub>	ppb	0 ≤ C < 1	1 ≤ C < 5	5 ≤ C < 10	10 ≤ C < 57	57 ≤ C < 172	C ≥ 172
NO <sub>2</sub>	ppb	0 ≤ C < 5	5 ≤ C < 15	15 ≤ C < 30	30 ≤ C < 100	100 ≤ C < 212	C ≥ 212
O <sub>3</sub>	ppb	0 ≤ C < 10	10 ≤ C < 20	20 ≤ C < 40	40 ≤ C < 60	60 ≤ C < 82	C ≥ 82
H <sub>2</sub> S	ppb	0 ≤ C < 1	1 ≤ C < 3.6	3.6 ≤ C < 5	5 ≤ C < 8	8 ≤ C < 10.8	C ≥ 10.8
PM <sub>2.5</sub>	ug/m <sup>3</sup>	0 ≤ C < 2	2 ≤ C < 4	4 ≤ C < 10	10 ≤ C < 20	20 ≤ C < 30	C ≥ 30

Exceedance Summary										
1-hour Exceedance Information			Summary of Other Parameters During Exceedance							
Pollutant	Conc. ppb	Exceedance Time mmm-dd hh:mm	WS m/s	WD deg	AQHI -	Rain mm	SO <sub>2</sub> ppb	H <sub>2</sub> S ppb	PM <sub>2.5</sub> ug/m <sup>3</sup>	
H <sub>2</sub> S	12.3	Oct-22 14:00	25.2	103	0	0.0	2.2	12.3	4	

Exceedance Summary (24-Hour Average)										
Pollutant	Conc. ppb	Exceedance Date mmm-dd	WS m/s	WD deg	AQHI -	Rain mm	SO <sub>2</sub> ppb	H <sub>2</sub> S ppb	PM <sub>2.5</sub> ug/m <sup>3</sup>	
24-hour Exceedance Information			WS	WD	AQHI	Rain	SO <sub>2</sub>	H <sub>2</sub> S	PM <sub>2.5</sub>	
PM <sub>2.5</sub>	35	Oct-7	15.7	325	-	0.0	-	0.1	35	
PM <sub>2.5</sub>	34	Oct-8	9.7	156	-	0.0	-	0.2	34	
PM <sub>2.5</sub>	30	Oct-2	10.4	271	-	0.0	0.1	0.2	30	

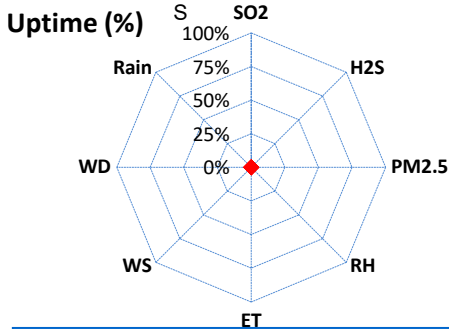
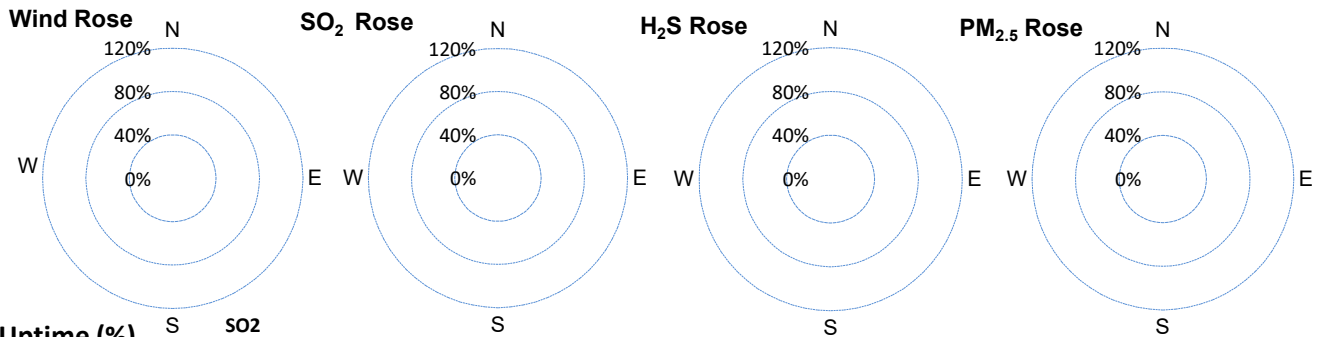
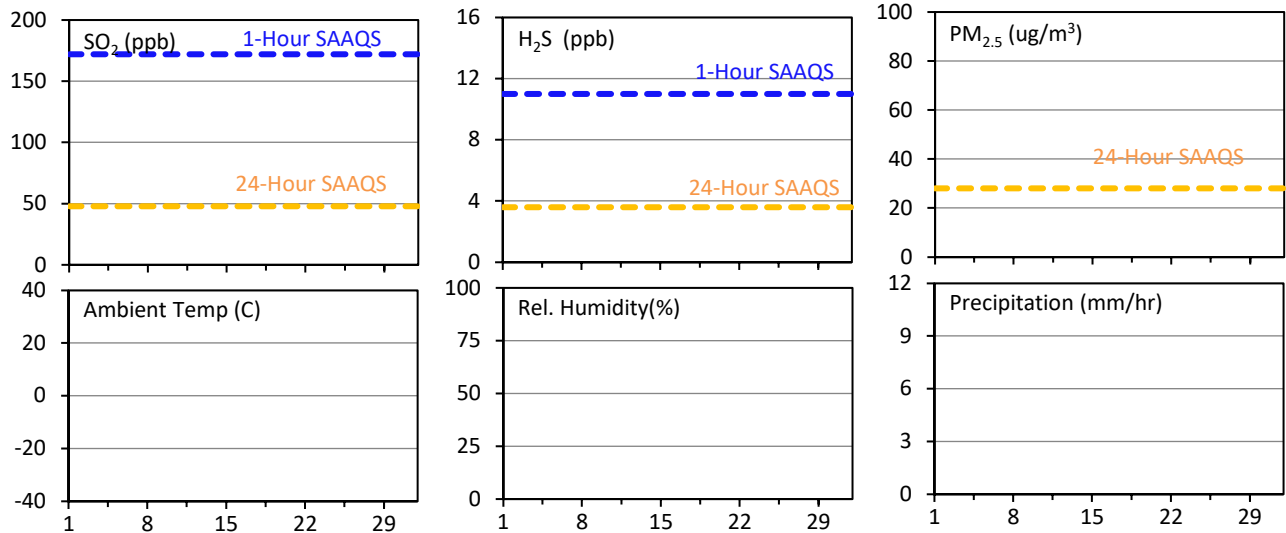
# SESAA Wauchope Station - October 2021 Summary Report

Pollutants		Month Records		24-Hour Records				1-Hour Records			
Name	Conc. Unit	Avg. Conc.	Uptime	Maximum		SAAQS Objective	Exceed Days	Maximum		SAAQS Objective	Exceed Hours
				Conc.	Time			Conc.	Time		
SO <sub>2</sub>	ppb	#VALUE!	0.0%	< 0.1	#N/A	48	0	< 0.1	-	172	0
H <sub>2</sub> S	ppb	#VALUE!	0.0%	< 0.1	#N/A	3.6	0	< 0.1	-	11	0
PM <sub>2.5</sub>	ug/m <sup>3</sup>	#VALUE!	0.0%	< 1	#N/A	28	0	< 1	-	-	-

SAAQS: Saskatchewan Ambient Air Quality Standards

\* Air Quality Standard refers to Saskatchewan Ambient Air Quality Standards (SAAQS).

\* Dotted lines are for SAAQS limits and solid lines are for averages.



Parameters	Unit	Color Code for Wind Spd & Pollutant Conc. Class					
Wind Speed	m/s	0.3 ≤ WS < 1.4	1.4 ≤ WS < 3.1	3.1 ≤ WS < 7.8	7.8 ≤ WS < 10.8	10.8 ≤ WS < 13.6	WS ≥ 13.6
SO <sub>2</sub>	ppb	0 ≤ C < 1	1 ≤ C < 5	5 ≤ C < 10	10 ≤ C < 57	57 ≤ C < 172	C ≥ 172
H <sub>2</sub> S	ppb	0 ≤ C < 1	1 ≤ C < 3.6	3.6 ≤ C < 5	5 ≤ C < 8	8 ≤ C < 10.8	C ≥ 10.8
PM <sub>2.5</sub>	ug/m <sup>3</sup>	0 ≤ C < 2	2 ≤ C < 4	4 ≤ C < 10	10 ≤ C < 20	20 ≤ C < 30	C ≥ 30

Monthly Update

\*Wauchope was not operational in October.

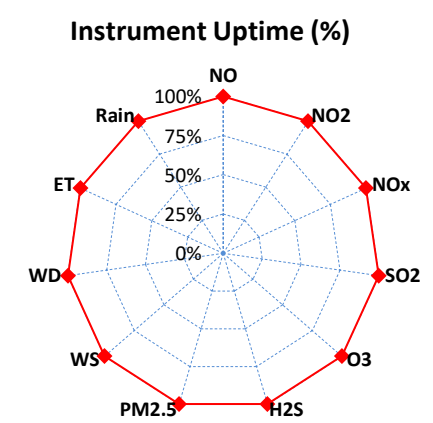
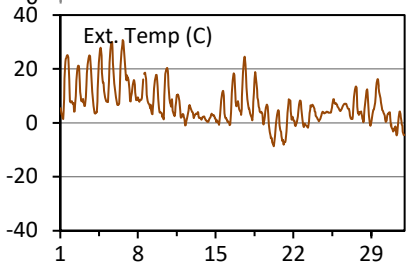
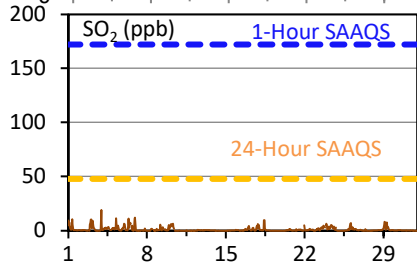
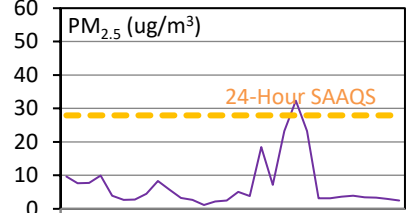
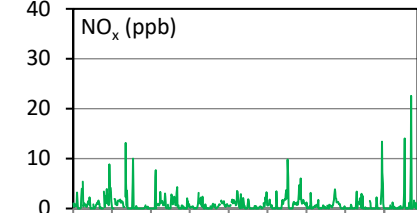
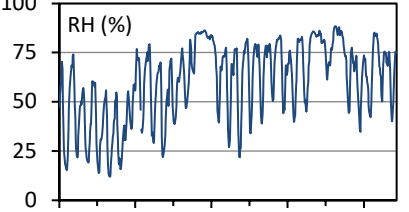
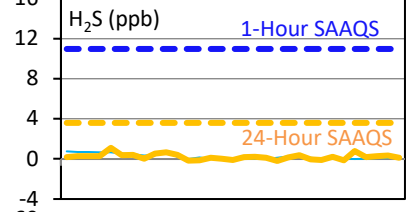
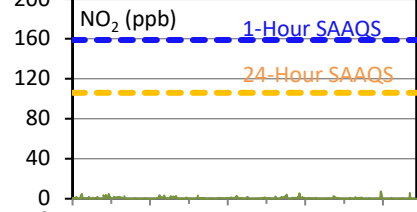
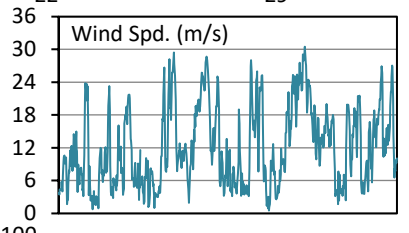
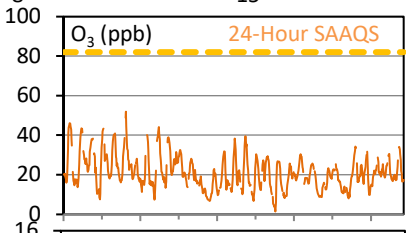
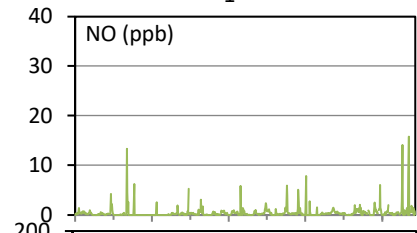
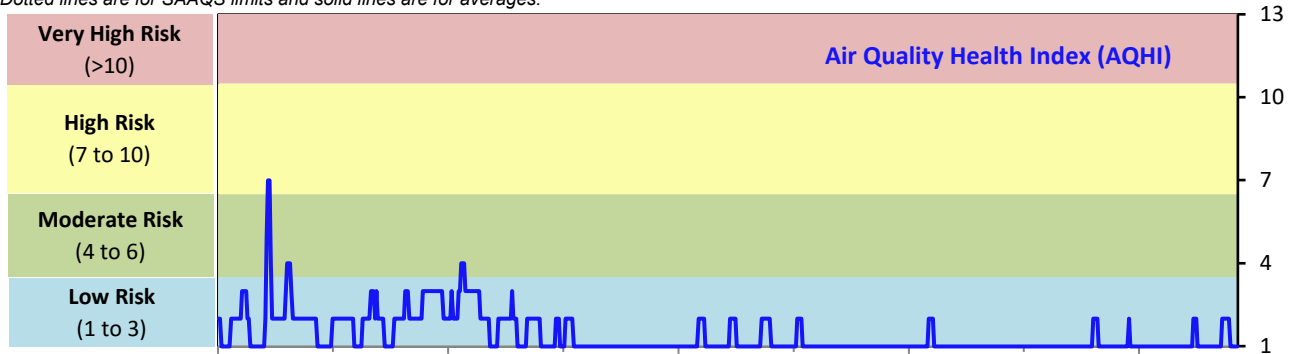
# SESAA Weyburn Station - October 2021 Summary Report

Pollutants		Month Records		24-Hour Records				1-Hour Records			
Name	Conc. Unit	Avg. Conc.	Uptime	Maximum		SAAQS Standard	Exceed Days	Maximum		SAAQS Standard	Exceed Hours
				Conc.	Time			Conc.	Time		
NO	ppb	0.4	99.9%	1.2	Oct-31	-	-	15.8	Oct-31 10:00	-	-
NO <sub>2</sub>	ppb	0.4	99.9%	1.2	Oct-4	106	0	7.4	Oct-28 19:00	159	0
NO <sub>x</sub>	ppb	0.8	99.9%	1.6	Oct-4	-	-	22.6	Oct-31 10:00	-	-
SO <sub>2</sub>	ppb	1.1	99.9%	3.8	Oct-6	48	0	19.2	Oct-03 22:00	172	0
O <sub>3</sub>	ppb	21	99.9%	29	Oct-3	-	-	52	Oct-06 16:00	82	0
H <sub>2</sub> S	ppb	0.3	99.9%	1.1	Oct-4	3.6	0	8	Oct-06 00:00	11	0
PM <sub>2.5</sub>	ug/m3	6	99.9%	35	Oct-8	28	2	187	Oct-02 11:00	-	-

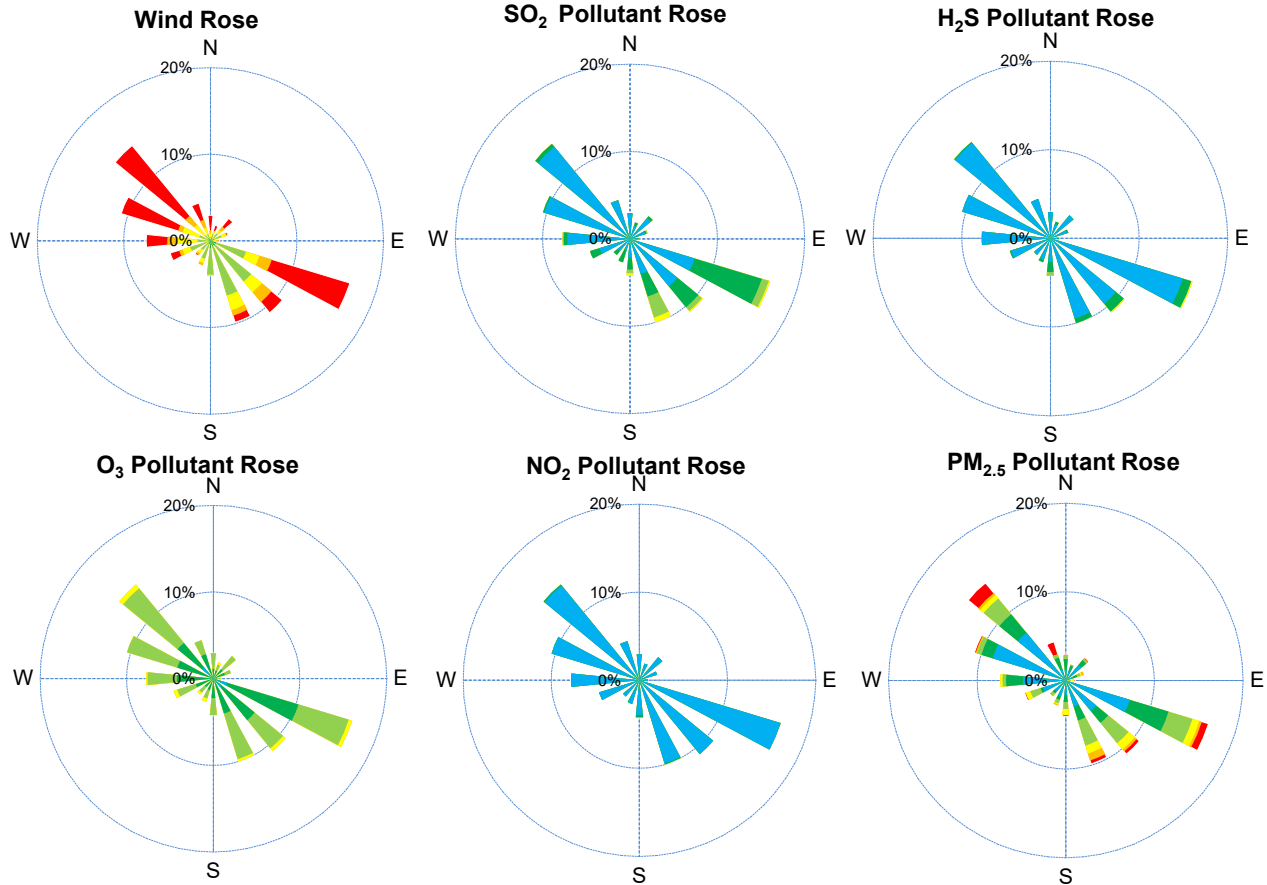
SAAQS: Saskatchewan Ambient Air Quality Standards

\* Air Quality Standard refers to Saskatchewan Ambient Air Quality Standards (SAAQS).

\* Dotted lines are for SAAQS limits and solid lines are for averages.



# SESAA Weyburn Station - October 2021 Summary Report



Parameters	Unit	Color Code for Wind Spd & Pollutant Conc. Class					
Wind Speed	m/s	0.3 ≤ WS < 1.4	1.4 ≤ WS < 3.1	3.1 ≤ WS < 7.8	7.8 ≤ WS < 10.8	10.8 ≤ WS < 13.6	WS ≥ 13.6
SO <sub>2</sub>	ppb	0 ≤ C < 1	1 ≤ C < 5	5 ≤ C < 10	10 ≤ C < 57	57 ≤ C < 172	C ≥ 172
NO <sub>2</sub>	ppb	0 ≤ C < 5	5 ≤ C < 15	15 ≤ C < 30	30 ≤ C < 100	100 ≤ C < 212	C ≥ 212
O <sub>3</sub>	ppb	0 ≤ C < 10	10 ≤ C < 20	20 ≤ C < 40	40 ≤ C < 60	60 ≤ C < 82	C ≥ 82
H <sub>2</sub> S	ppb	0 ≤ C < 1	1 ≤ C < 3.6	3.6 ≤ C < 5	5 ≤ C < 8	8 ≤ C < 10.8	C ≥ 10.8
PM <sub>2.5</sub>	ug/m <sup>3</sup>	0 ≤ C < 2	2 ≤ C < 4	4 ≤ C < 10	10 ≤ C < 20	20 ≤ C < 30	C ≥ 30

## Monthly Update

\*All data has been slope, intercept, and baseline corrected. Data may change after validation process.

\*All compliance parameters were within the Saskatchewan Ambient Air Quality Standards with the exception of two 24hr PM<sub>2.5</sub> exceedances attributed to wildfire smoke in the area.

\*All compliance parameters are above 90% operational.

## Exceedance Summary (24-Hour Average)

Pollutant	Conc. ppb	Exceedance Date	WS	WD	AQHI	Rain	SO <sub>2</sub>	NO <sub>2</sub>	O <sub>3</sub>	H <sub>2</sub> S	PM <sub>2.5</sub>
		mmm-dd	m/s	deg	-	mm	ppb	ppb	ppb	ppb	ug/m <sup>3</sup>
24-hour Exceedance Information			WS	WD	AQHI	Rain	SO <sub>2</sub>	NO <sub>2</sub>	O <sub>3</sub>	H <sub>2</sub> S	PM <sub>2.5</sub>
PM <sub>2.5</sub>	35	Oct-8	5.8	147	3	0.0	-	-	21	-	35
PM <sub>2.5</sub>	33	Oct-7	14.6	321	3	0.0	-	-	22	-	33