

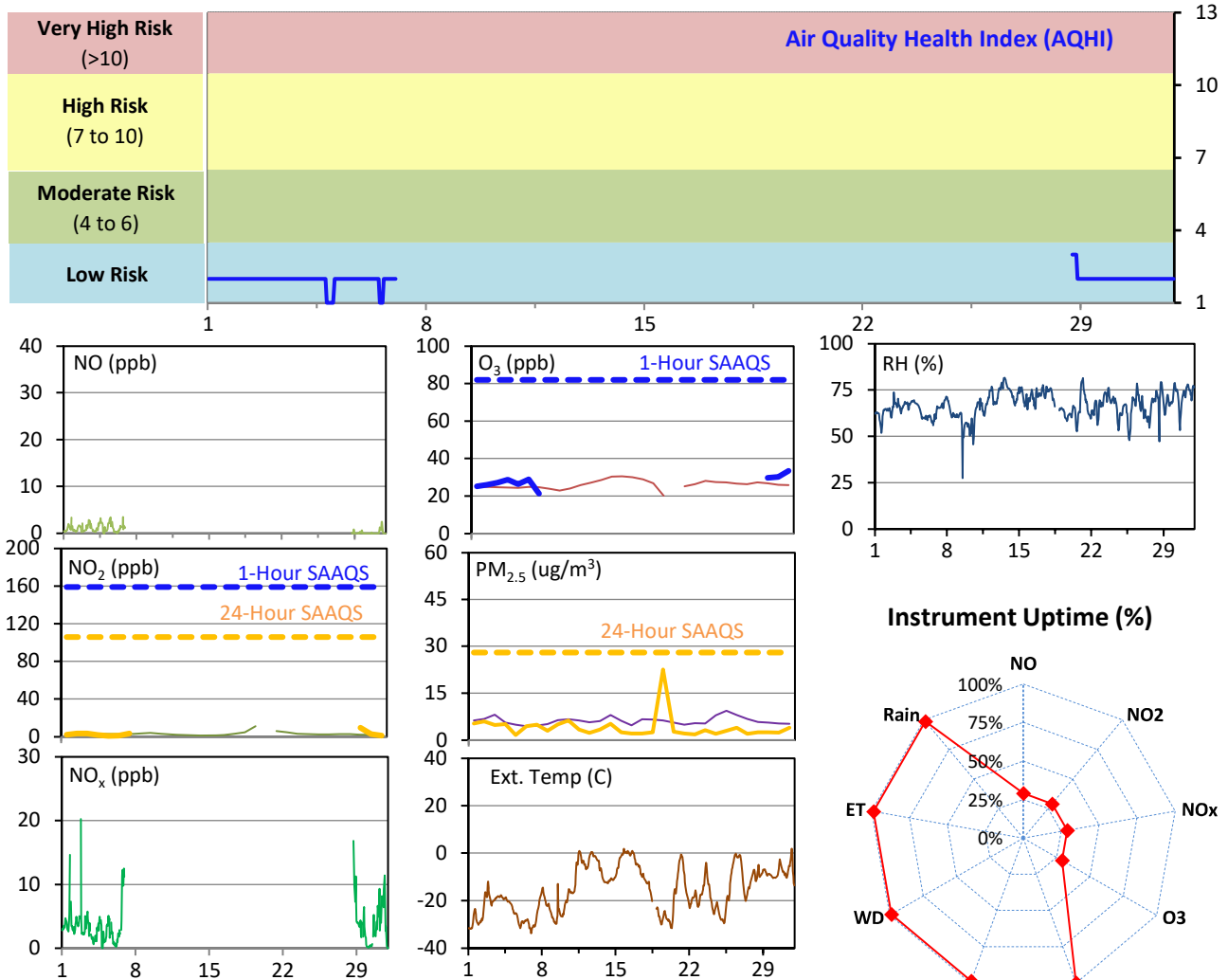
# SESAA Esterhazy Station - January 2022 Summary Report

Pollutants		Month Records		24-Hour Records				1-Hour Records			
Name	Conc. Unit	Avg. Conc.	Uptime	Maximum		SAAQS Standard	Exceed Days	Maximum		SAAQS Standard	Exceed Hours
				Conc.	Time			Conc.	Time		
NO	ppb	0.8	29.0%	1.3	Jan-5	-	-	3.5	Jan-06 17:00	-	-
NO <sub>2</sub>	ppb	2.7	29.0%	4.3	Jan-31	106	0	18.2	Jan-02 19:00	159	0
NO <sub>x</sub>	ppb	3.6	29.0%	6.6	Jan-31	-	-	20.3	Jan-02 19:00	-	-
O <sub>3</sub>	ppb	28	29.0%	33	Jan-30	-	-	37	Jan-30 19:00	82	0
PM <sub>2.5</sub>	ug/m3	4	100.0%	23	Jan-18	28	0	65	Jan-18 14:00	-	-

SAAQS: Saskatchewan Ambient Air Quality Standards

\* Air Quality Standard refers to Saskatchewan Ambient Air Quality Standards (SAAQS).

\* Dotted lines are for SAAQS limits and solid lines are for averages.



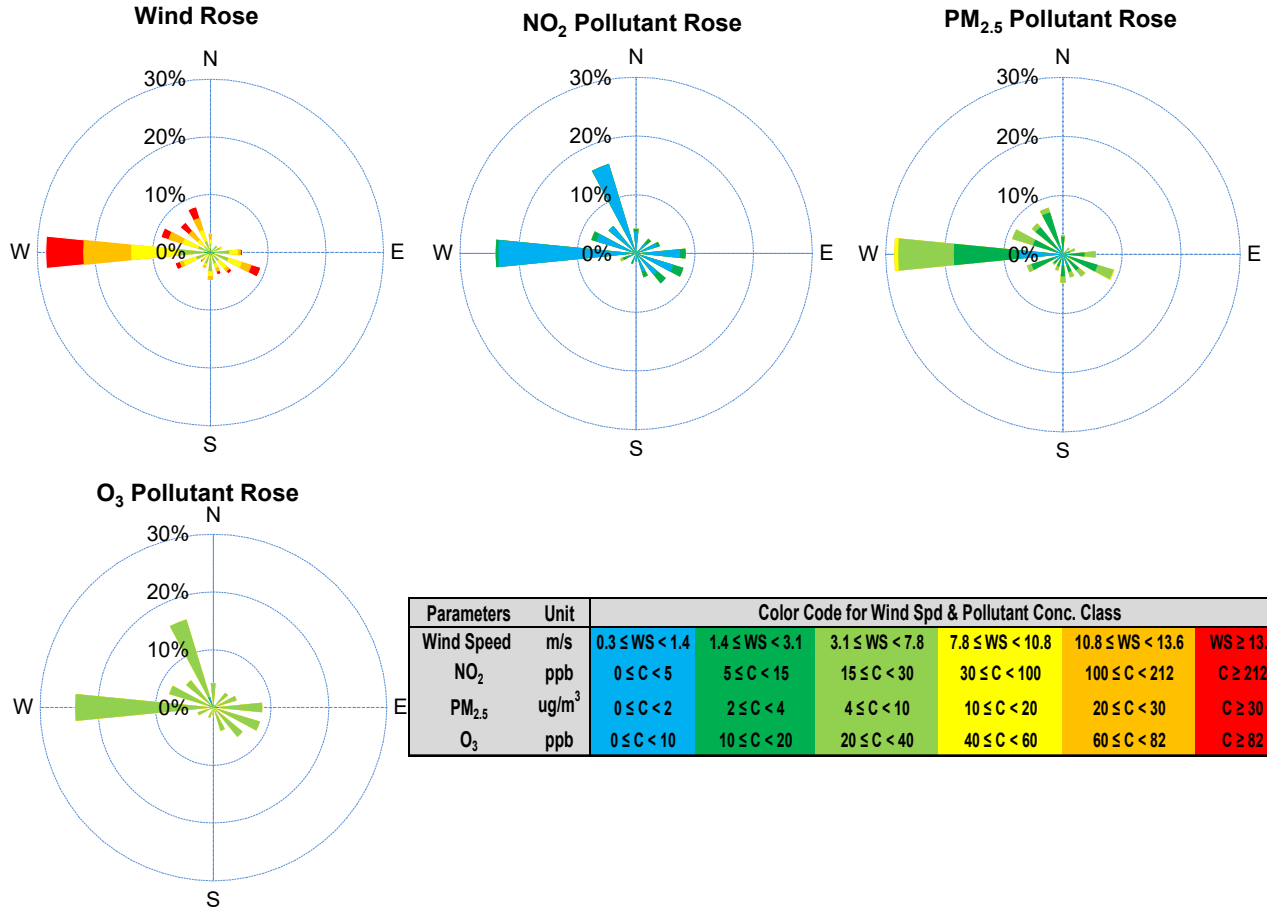
## Monthly Update

\*All data has been slope, intercept, and baseline corrected. Data may change after validation process.

\*All compliance parameters were within the Saskatchewan Ambient Air Quality Standards.

\*All compliance parameters were above 90% operational with the exception of O<sub>3</sub>, NO, NO<sub>2</sub> and NO<sub>x</sub> due to pump issues.

# SESAA Esterhazy Station - January 2022 Summary Report



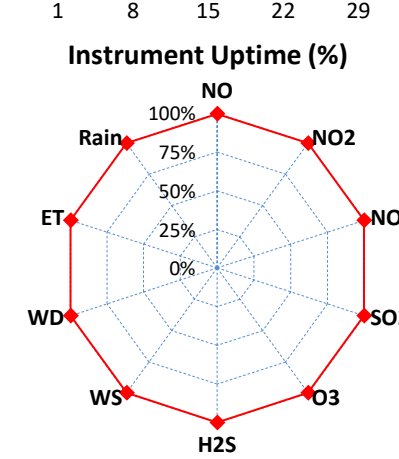
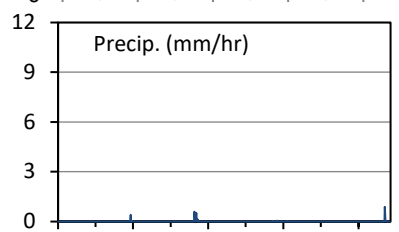
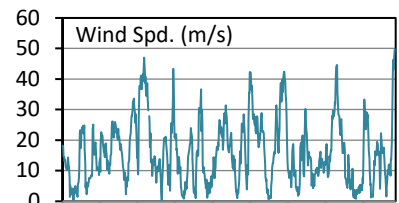
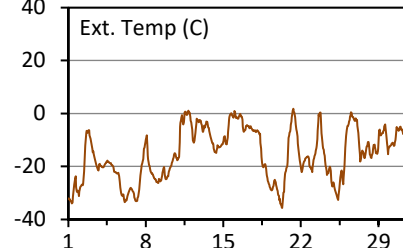
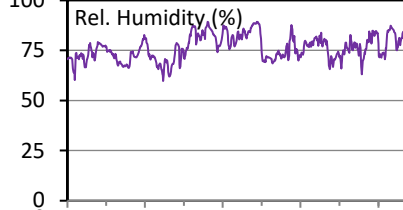
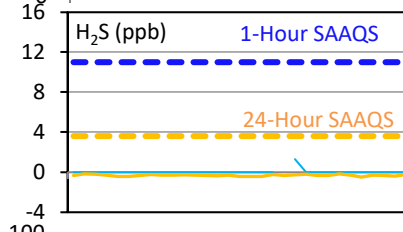
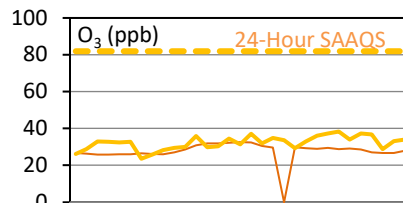
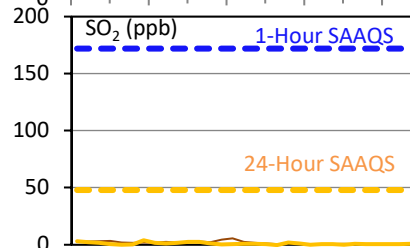
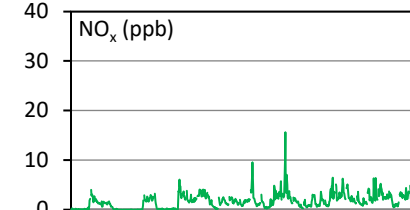
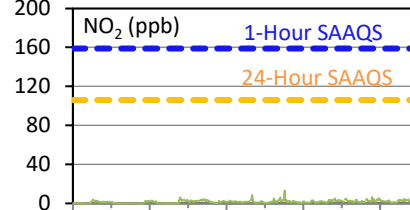
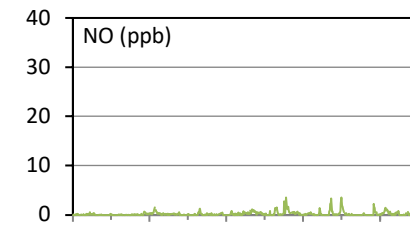
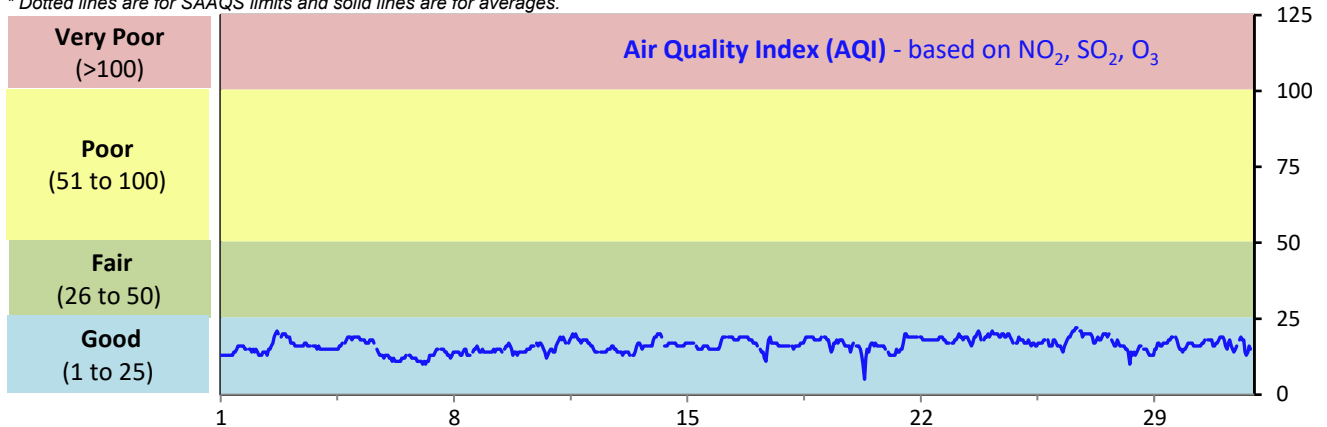
# SESAA Glen Ewen Station - January 2022 Summary Report

Pollutants		Month Records		24-Hour Records				1-Hour Records			
Name	Conc. Unit	Avg. Conc.	Uptime	Maximum		SAAQS Standard	Exceed Days	Maximum		SAAQS Standard	Exceed Hours
				Conc.	Time			Conc.	Time		
NO	ppb	0.2	99.7%	1.0	Jan-20	-	-	3.6	Jan-25 11:00	-	-
NO <sub>2</sub>	ppb	1.5	99.7%	2.9	Jan-20	106	0	13.2	Jan-20 07:00	159	0
NO <sub>x</sub>	ppb	1.7	99.7%	4.0	Jan-20	-	-	15.6	Jan-20 07:00	-	-
SO <sub>2</sub>	ppb	0.9	99.7%	3.9	Jan-6	48	0	21.2	Jan-06 13:00	172	0
O <sub>3</sub>	ppb	32	99.7%	38	Jan-24	-	-	44	Jan-26 16:00	82	0
H <sub>2</sub> S	ppb	< 0.1	99.7%	< 0.1	Dec-09	3.6	0	1.3	Jan-01 20:00	11	0

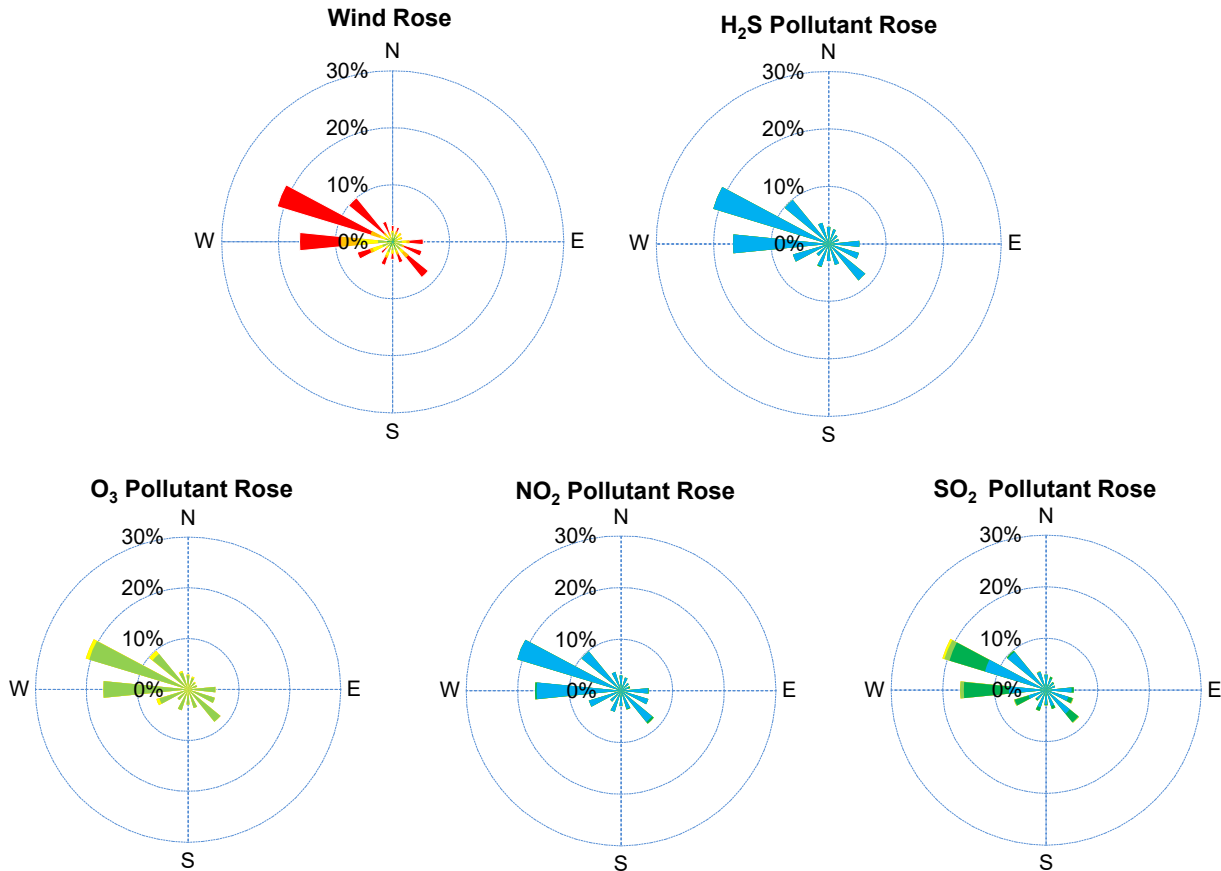
SAAQS: Saskatchewan Ambient Air Quality Standards

\* Air Quality Standard refers to Saskatchewan Ambient Air Quality Standards (SAAQS).

\* Dotted lines are for SAAQS limits and solid lines are for averages.



# SESAA Glen Ewen Station - January 2022 Summary Report



Parameters	Unit	Color Code for Wind Spd & Pollutant Conc. Class						
Wind Speed	m/s	0.3 ≤ WS < 1.4	1.4 ≤ WS < 3.1	3.1 ≤ WS < 7.8	7.8 ≤ WS < 10.8	10.8 ≤ WS < 13.6	WS ≥ 13.6	
SO <sub>2</sub>	ppb	0 ≤ C < 1	1 ≤ C < 5	5 ≤ C < 10	10 ≤ C < 57	57 ≤ C < 172	C ≥ 172	
NO <sub>2</sub>	ppb	0 ≤ C < 5	5 ≤ C < 15	15 ≤ C < 30	30 ≤ C < 100	100 ≤ C < 212	C ≥ 212	
O <sub>3</sub>	ppb	0 ≤ C < 10	10 ≤ C < 20	20 ≤ C < 40	40 ≤ C < 60	60 ≤ C < 82	C ≥ 82	
H <sub>2</sub> S	ppb	0 ≤ C < 1	1 ≤ C < 3.6	3.6 ≤ C < 5	5 ≤ C < 8	8 ≤ C < 10.8	C ≥ 10.8	

## Monthly Update

\*All data has been slope, intercept, and baseline corrected. Data may change after validation process.

\*All compliance parameters were within the Saskatchewan Ambient Air Quality Standards.

\*All compliance parameters are greater than 90% operational.

\*2 hours of data for all parameters is flagged as "analyzer failure" due to cold and wind extremes causing data interruptions.

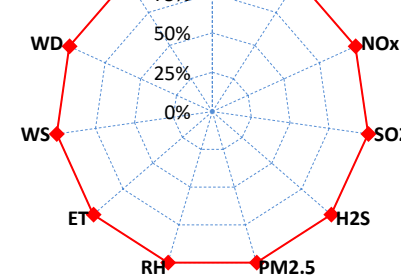
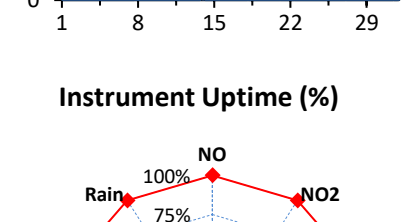
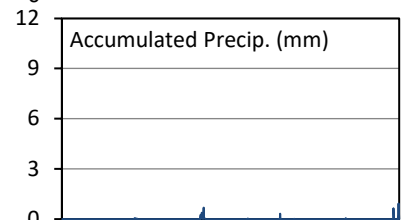
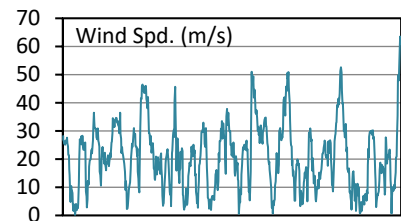
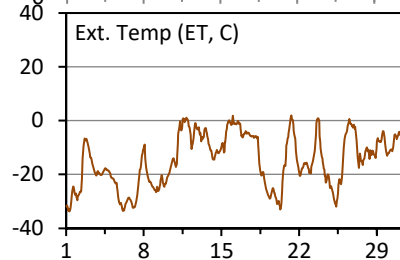
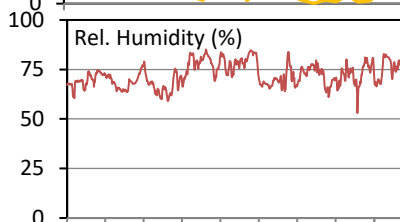
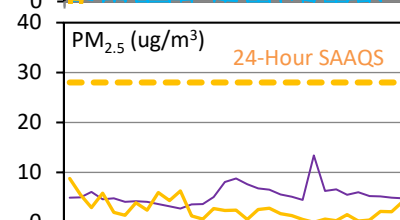
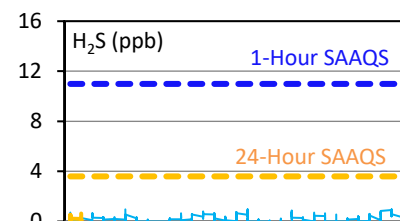
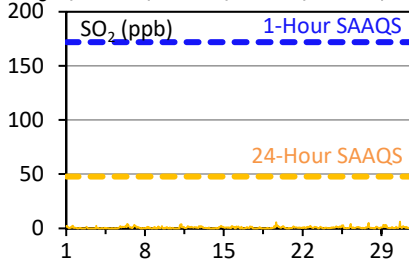
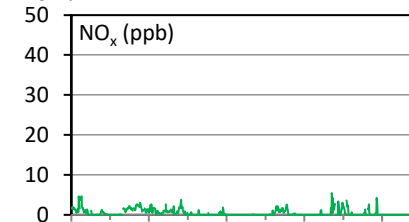
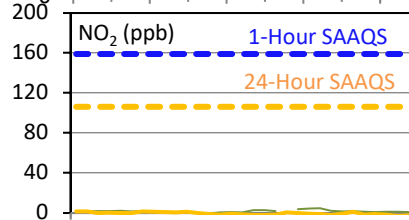
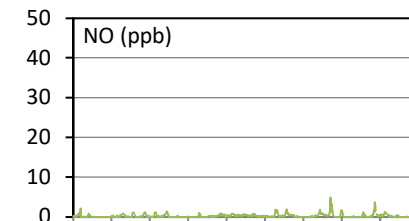
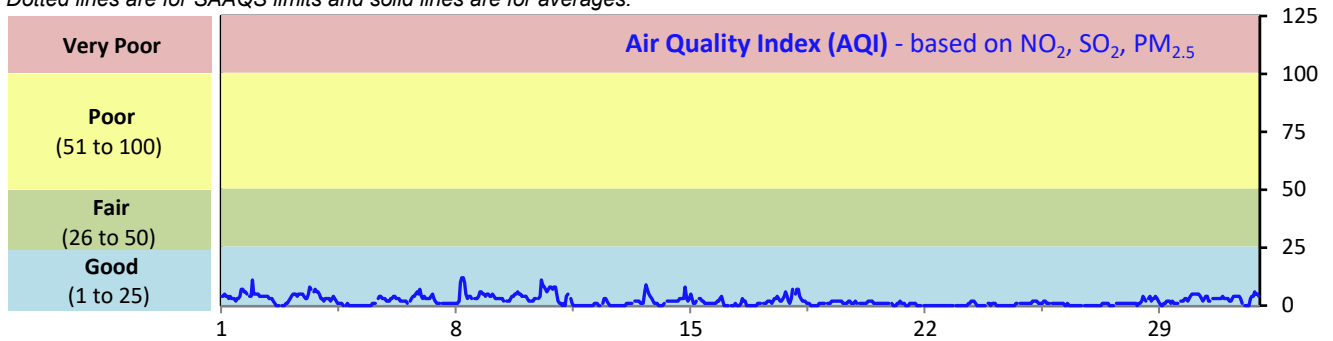
# SESAA Oxbow Station - January 2022 Summary Report

Pollutants		Month Records		24-Hour Records				1-Hour Records			
Name	Conc. Unit	Avg. Conc.	Uptime	Maximum		SAAQS Standard	Exceed Days	Maximum		SAAQS Standard	Exceed Hours
				Conc.	Time			Conc.	Time		
NO	ppb	0.3	100.0%	0.8	Jan-24	-	-	4.9	Jan-24 11:00	-	-
NO <sub>2</sub>	ppb	0.4	100.0%	1.6	Jan-1	106	0	4.7	Jan-01 22:00	159	0
NO <sub>x</sub>	ppb	0.5	100.0%	1.9	Jan-1	-	-	5.4	Jan-24 11:00	-	-
SO <sub>2</sub>	ppb	0.6	100.0%	1.5	Jan-6	48	0	6.1	Jan-30 15:00	172	0
H <sub>2</sub> S	ppb	0.2	100.0%	0.7	Jan-30	3.6	0	1	Jan-17 08:00	11	0
PM <sub>2.5</sub>	ug/m <sup>3</sup>	2	100.0%	6	Jan-10	28	0	15	Jan-08 05:00	-	-

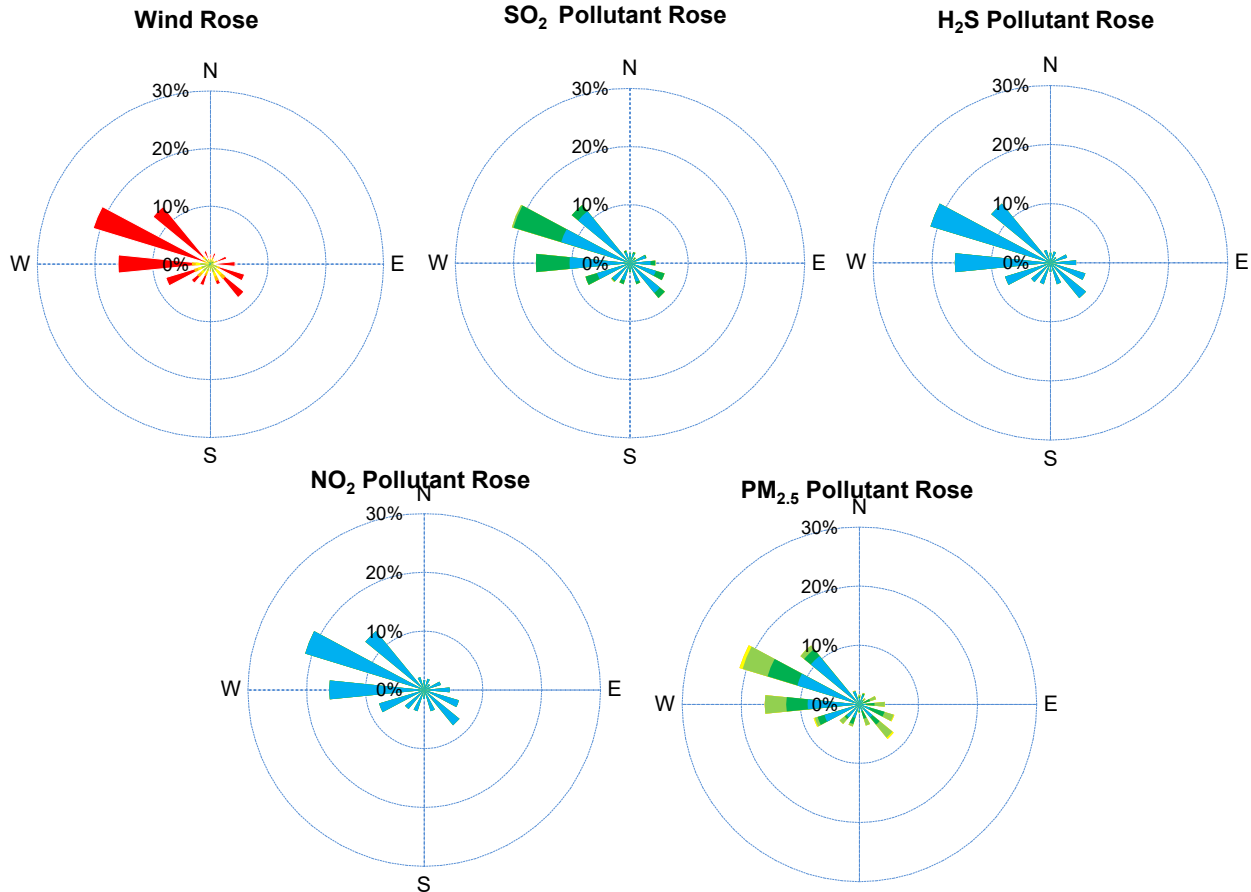
SAAQS: Saskatchewan Ambient Air Quality Standards

\* Air Quality Standard refers to Saskatchewan Ambient Air Quality Standards (SAAQS).

\* Dotted lines are for SAAQS limits and solid lines are for averages.



# SESAA Oxbow Station - January 2022 Summary Report



Parameters	Unit	Color Code for Wind Spd & Pollutant Conc. Class						
Wind Speed	m/s	$0.3 \leq WS < 1.4$	$1.4 \leq WS < 3.1$	$3.1 \leq WS < 7.8$	$7.8 \leq WS < 10.8$	$10.8 \leq WS < 13.6$	$WS \geq 13.6$	
SO <sub>2</sub>	ppb	$0 \leq C < 1$	$1 \leq C < 5$	$5 \leq C < 10$	$10 \leq C < 57$	$57 \leq C < 172$	$C \geq 172$	
NO <sub>2</sub>	ppb	$0 \leq C < 5$	$5 \leq C < 15$	$15 \leq C < 30$	$30 \leq C < 100$	$100 \leq C < 212$	$C \geq 212$	
H <sub>2</sub> S	ppb	$0 \leq C < 1$	$1 \leq C < 3.6$	$3.6 \leq C < 5$	$5 \leq C < 8$	$8 \leq C < 10.8$	$C \geq 10.8$	
PM <sub>2.5</sub>	ug/m <sup>3</sup>	$0 \leq C < 2$	$2 \leq C < 4$	$4 \leq C < 10$	$10 \leq C < 20$	$20 \leq C < 30$	$C \geq 30$	

## Monthly Update

\*All data has been slope, intercept, and baseline corrected. Data may change after validation process.

\*All compliance parameters were within the Saskatchewan Ambient Air Quality Standards.

\*All compliance parameters had greater than 90% operational uptime.

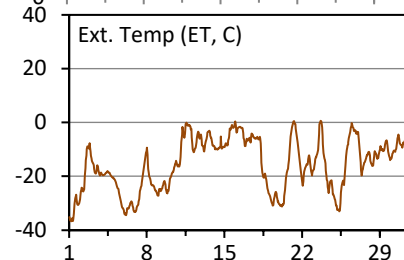
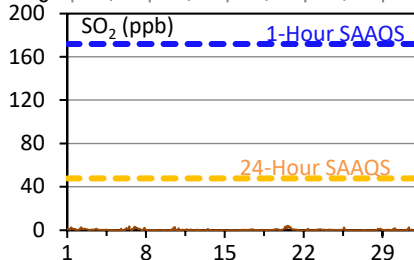
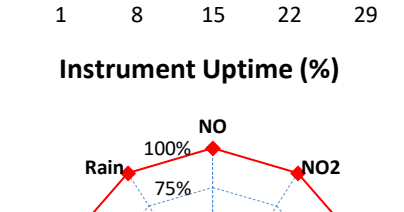
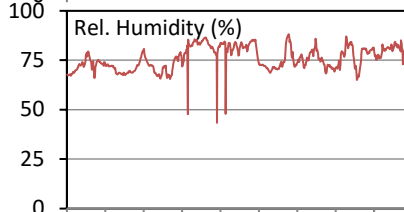
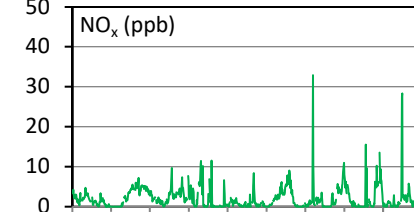
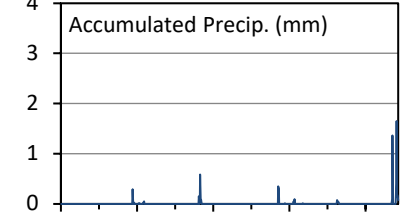
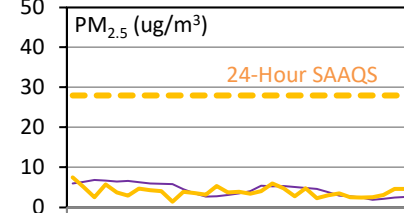
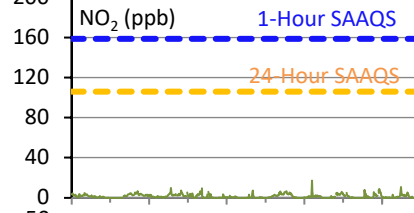
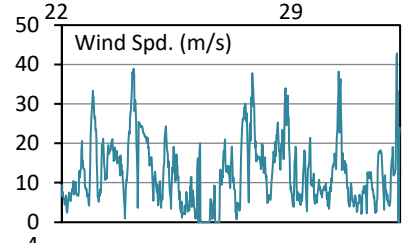
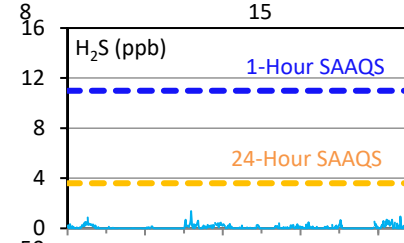
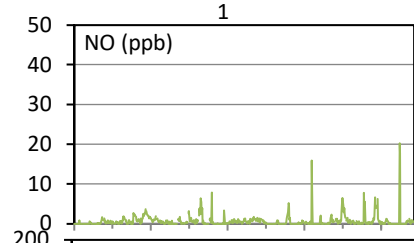
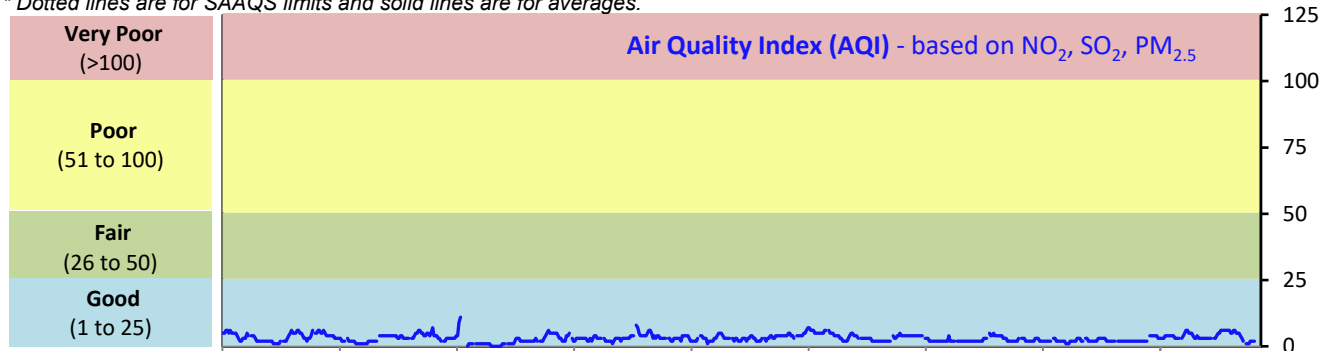
# SESAA Stoughton Station - January 2022 Summary Report

Pollutants		Month Records		24-Hour Records				1-Hour Records			
Name	Conc. Unit	Avg. Conc.	Uptime	Maximum		SAAQS Standard	Exceed Days	Maximum		SAAQS Standard	Exceed Hours
				Conc.	Time			Conc.	Time		
NO	ppb	0.7	100.0%	1.9	Jan-25	-	-	20.3	Jan-30 16:00	-	-
NO <sub>2</sub>	ppb	1.5	100.0%	3.9	Jan-20	106	0	17.1	Jan-22 16:00	159	0
NO <sub>x</sub>	ppb	2.1	100.0%	5.1	Jan-25	-	-	32.9	Jan-22 16:00	-	-
SO <sub>2</sub>	ppb	0.4	100.0%	2.0	Jan-20	48	0	4.1	Jan-20 13:00	172	0
H <sub>2</sub> S	ppb	0.1	100.0%	0.3	Jan-29	3.6	0	1.4	Jan-12 03:00	11	0
PM <sub>2.5</sub>	ug/m <sup>3</sup>	4	98.9%	6	Jan-18	28	0	13	Jan-08 02:00	-	-

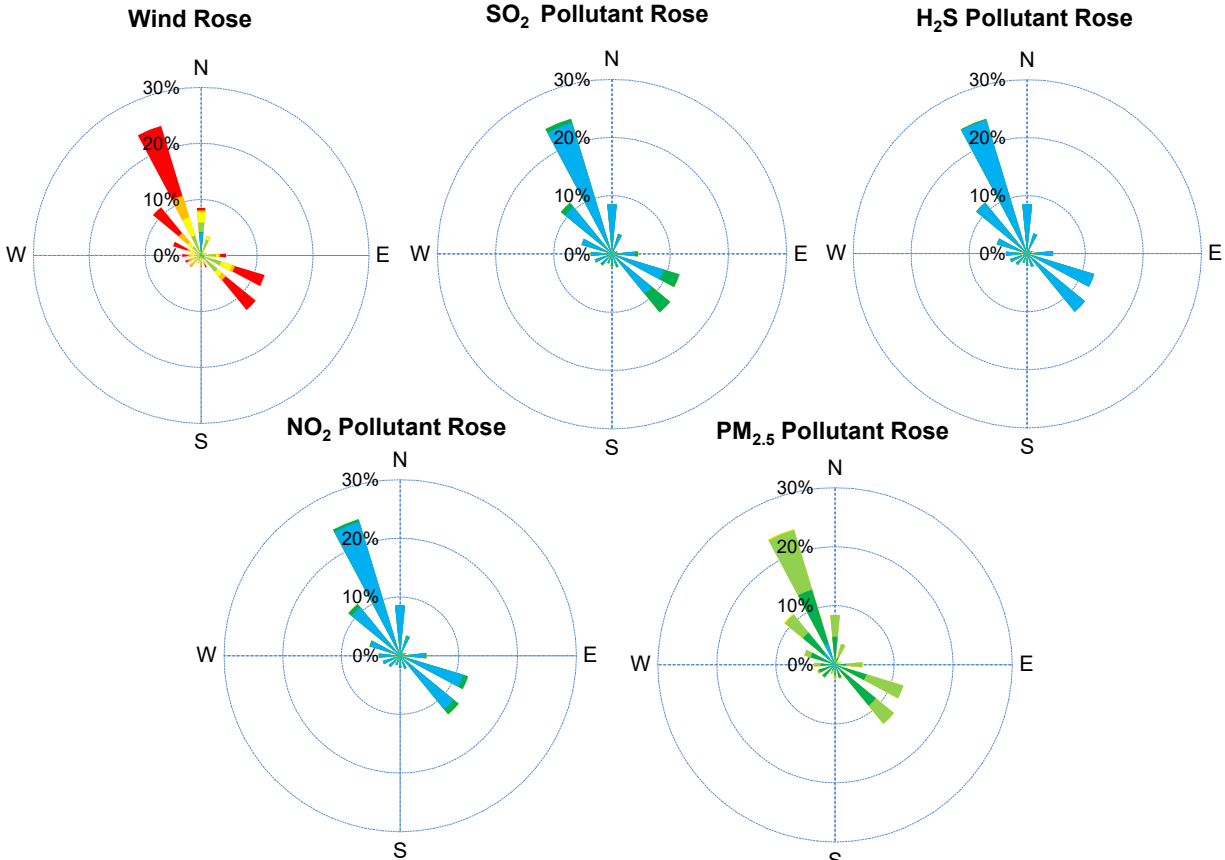
SAAQS: Saskatchewan Ambient Air Quality Standards

\* Air Quality Standard refers to Saskatchewan Ambient Air Quality Standards (SAAQS).

\* Dotted lines are for SAAQS limits and solid lines are for averages.



# SESAA Stoughton Station - January 2022 Summary Report



Parameters	Unit	Color Code for Wind Spd & Pollutant Conc. Class						
Wind Speed	m/s	0.3 ≤ WS < 1.4	1.4 ≤ WS < 3.1	3.1 ≤ WS < 7.8	7.8 ≤ WS < 10.8	10.8 ≤ WS < 13.6	WS ≥ 13.6	
SO <sub>2</sub>	ppb	0 ≤ C < 1	1 ≤ C < 5	5 ≤ C < 10	10 ≤ C < 57	57 ≤ C < 172	C ≥ 172	
NO <sub>2</sub>	ppb	0 ≤ C < 5	5 ≤ C < 15	15 ≤ C < 30	30 ≤ C < 100	100 ≤ C < 212	C ≥ 212	
H <sub>2</sub> S	ppb	0 ≤ C < 1	1 ≤ C < 3.6	3.6 ≤ C < 5	5 ≤ C < 8	8 ≤ C < 10.8	C ≥ 10.8	
PM <sub>2.5</sub>	ug/m <sup>3</sup>	0 ≤ C < 2	2 ≤ C < 4	4 ≤ C < 10	10 ≤ C < 20	20 ≤ C < 30	C ≥ 30	

## Monthly Update

\*All data has been slope, intercept, and baseline corrected. Data may change after validation process.

\*All compliance parameters were within the Saskatchewan Ambient Air Quality Standards.

\*All compliance parameters were greater than 90% operational.

\*8 hours of data is flagged as "analyzer failure" for PM 2.5 due to intermittent analyzer issues.



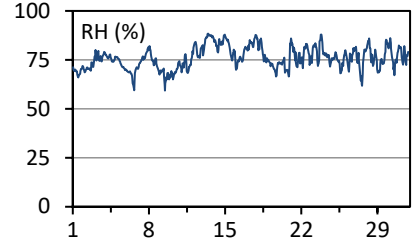
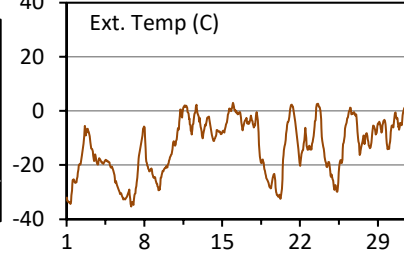
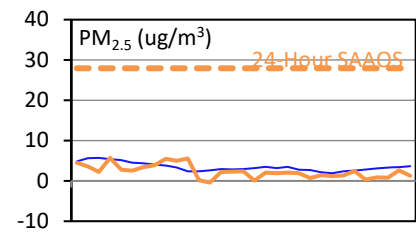
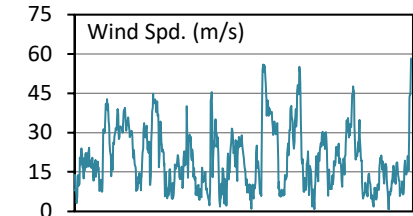
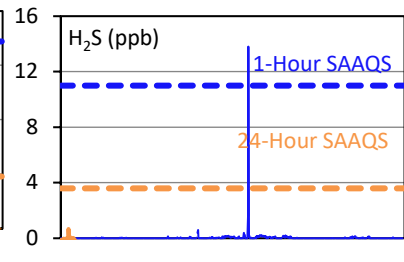
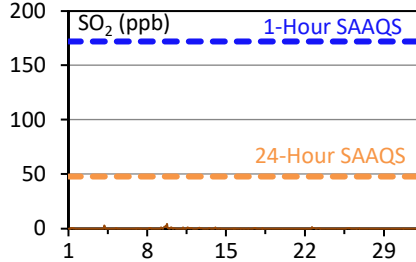
# SESAA Torquay Station - January 2022 Summary Report

Pollutants		Month Records		24-Hour Records				1-Hour Records			
Name	Conc. Unit	Avg. Conc.	Uptime	Maximum		SAAQS Standard	Exceed Days	Maximum		SAAQS Standard	Exceed Hours
				Conc.	Time			Conc.	Time		
SO <sub>2</sub>	ppb	0.1	99.4%	< 0.1	Jan-10	48	0	4.2	Jan-09 18:00	172	0
H <sub>2</sub> S	ppb	< 0.1	99.4%	0.1	Jan-19	3.6	0	13.9	Jan-17 22:00	11	1
PM <sub>2.5</sub>	ug/m3	2	99.5%	6	Jan-3	28	0	14	Jan-08 03:00	-	-

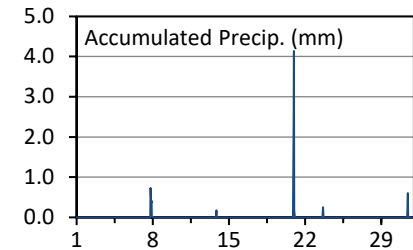
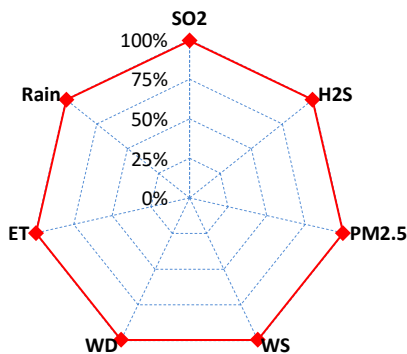
SAAQS: Saskatchewan Ambient Air Quality Standards

\* Air Quality Standard refers to Saskatchewan Ambient Air Quality Standards (SAAQS).

\* Dotted lines are for SAAQS limits and solid lines are for averages.



### Instrument Uptime (%)



## Monthly Update

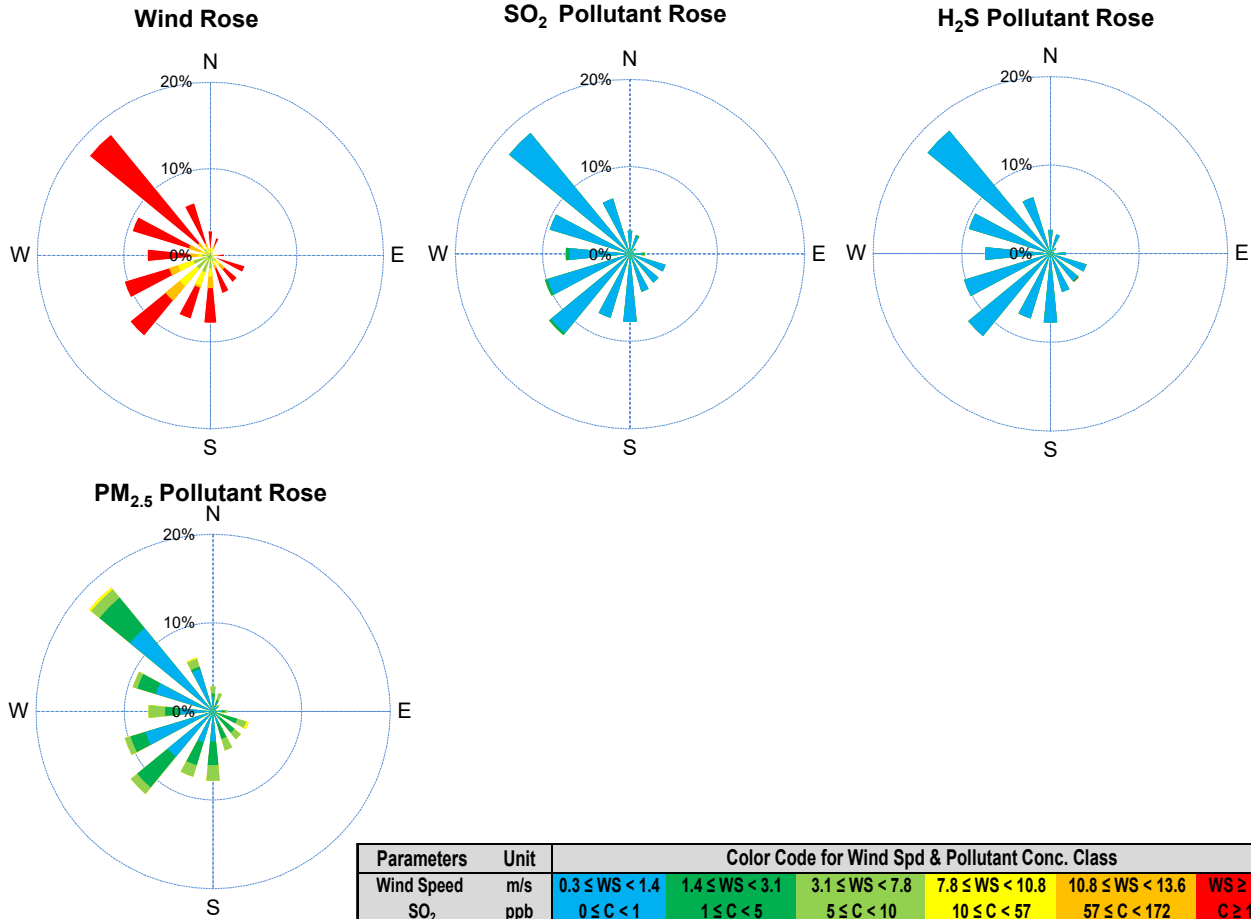
\*All data has been slope, intercept, and baseline corrected. Data may change after validation process.

\*All compliance parameters were within the Saskatchewan Ambient Air Quality Standards with the exception of one 1-hr H<sub>2</sub>S exceedance.

\*All compliance parameters are above 90% operational.

\*4 hours of data for all parameters is flagged as "analyzer failure" due to cold and wind extremes causing data interruptions.

# SESAA Torquay Station - January 2022 Summary Report



Parameters	Unit	Color Code for Wind Spd & Pollutant Conc. Class					
Wind Speed	m/s	0.3 ≤ WS < 1.4	1.4 ≤ WS < 3.1	3.1 ≤ WS < 7.8	7.8 ≤ WS < 10.8	10.8 ≤ WS < 13.6	WS ≥ 13.6
SO <sub>2</sub>	ppb	0 ≤ C < 1	1 ≤ C < 5	5 ≤ C < 10	10 ≤ C < 57	57 ≤ C < 172	C ≥ 172
NO <sub>2</sub>	ppb	0 ≤ C < 5	5 ≤ C < 15	15 ≤ C < 30	30 ≤ C < 100	100 ≤ C < 212	C ≥ 212
O <sub>3</sub>	ppb	0 ≤ C < 10	10 ≤ C < 20	20 ≤ C < 40	40 ≤ C < 60	60 ≤ C < 82	C ≥ 82
H <sub>2</sub> S	ppb	0 ≤ C < 1	1 ≤ C < 3.6	3.6 ≤ C < 5	5 ≤ C < 8	8 ≤ C < 10.8	C ≥ 10.8
PM <sub>2.5</sub>	ug/m <sup>3</sup>	0 ≤ C < 2	2 ≤ C < 4	4 ≤ C < 10	10 ≤ C < 20	20 ≤ C < 30	C ≥ 30

Exceedance Summary										
1-hour Exceedance Information			Summary of Other Parameters During Exceedance							
Pollutant	Conc. ppb	Exceedance Time mmm-dd hh:mm	WS m/s	WD deg	AQHI -	Rain mm	SO2 ppb	H2S ppb	PM2.5 ug/m3	
H2S	13.9	Jan-17 22:00	11.3	146	0	0.0	0.0	13.8	3	

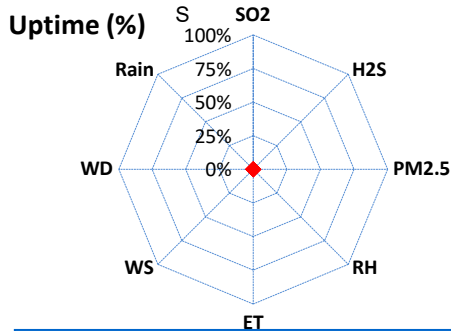
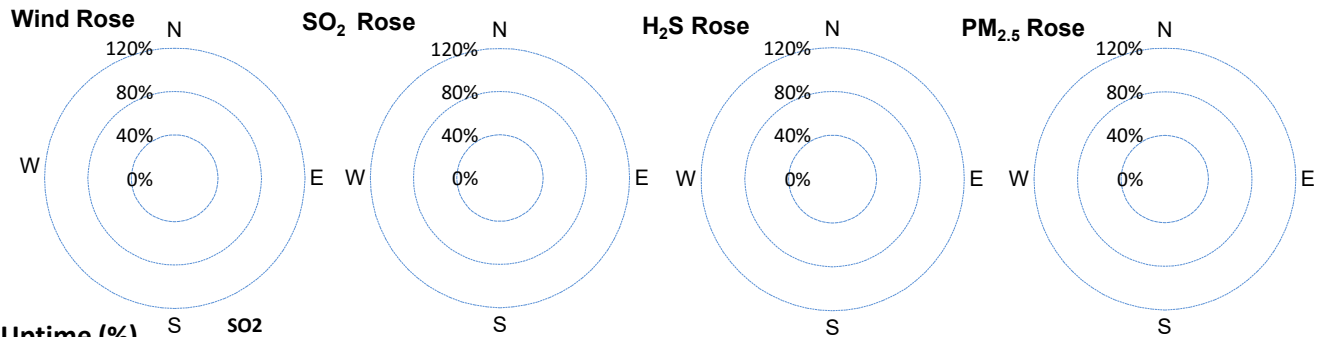
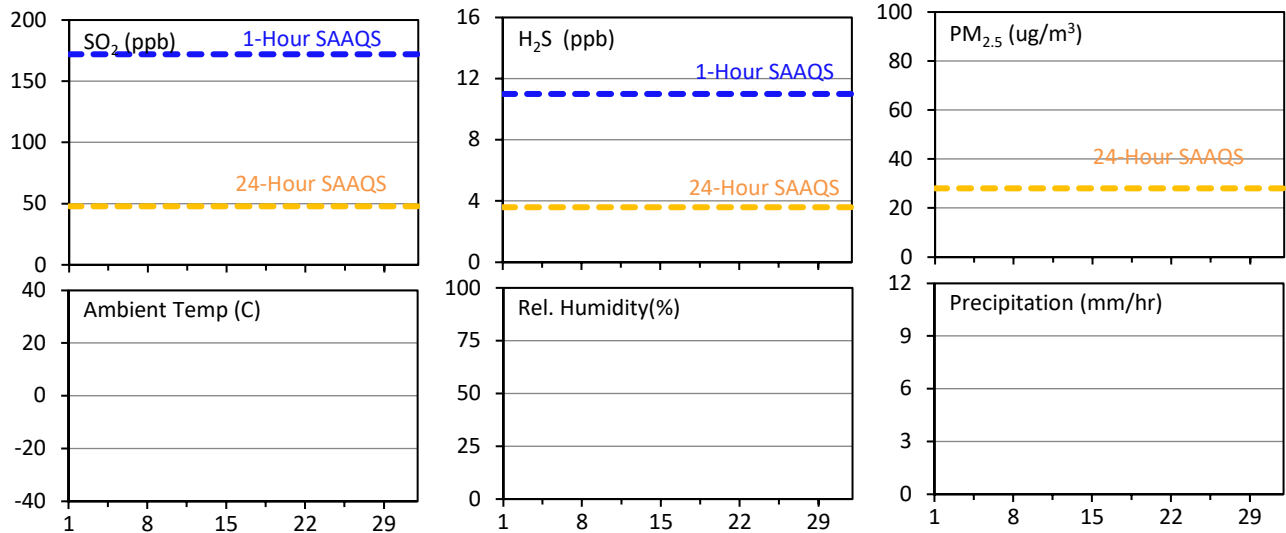
# SESAA Wauchope Station - January 2022 Summary Report

Pollutants		Month Records		24-Hour Records				1-Hour Records			
Name	Conc. Unit	Avg. Conc.	Uptime	Maximum		SAAQS	Exceed	Maximum		SAAQS	Exceed
				Conc.	Time	Objective	Days	Conc.	Time	Objective	Hours
SO <sub>2</sub>	ppb	#VALUE!	0.0%	< 0.1	#N/A	48	0	< 0.1	-	172	0
H <sub>2</sub> S	ppb	#VALUE!	0.0%	< 0.1	#N/A	3.6	0	< 0.1	-	11	0
PM <sub>2.5</sub>	ug/m3	#VALUE!	0.0%	< 1	#N/A	28	0	< 1	-	-	-

SAAQS: Saskatchewan Ambient Air Quality Standards

\* Air Quality Standard refers to Saskatchewan Ambient Air Quality Standards (SAAQS).

\* Dotted lines are for SAAQS limits and solid lines are for averages.



Parameters	Unit	Color Code for Wind Spd & Pollutant Conc. Class					
Wind Speed	m/s	0.3 ≤ WS < 1.4	1.4 ≤ WS < 3.1	3.1 ≤ WS < 7.8	7.8 ≤ WS < 10.8	10.8 ≤ WS < 13.6	WS ≥ 13.6
SO <sub>2</sub>	ppb	0 ≤ C < 1	1 ≤ C < 5	5 ≤ C < 10	10 ≤ C < 57	57 ≤ C < 172	C ≥ 172
H <sub>2</sub> S	ppb	0 ≤ C < 1	1 ≤ C < 3.6	3.6 ≤ C < 5	5 ≤ C < 8	8 ≤ C < 10.8	C ≥ 10.8
PM <sub>2.5</sub>	ug/m <sup>3</sup>	0 ≤ C < 2	2 ≤ C < 4	4 ≤ C < 10	10 ≤ C < 20	20 ≤ C < 30	C ≥ 30

Monthly Update

\*Wauchope was not operational in January.

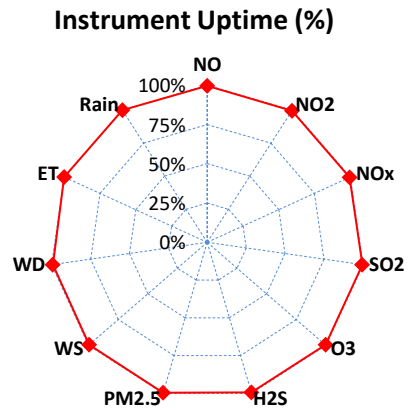
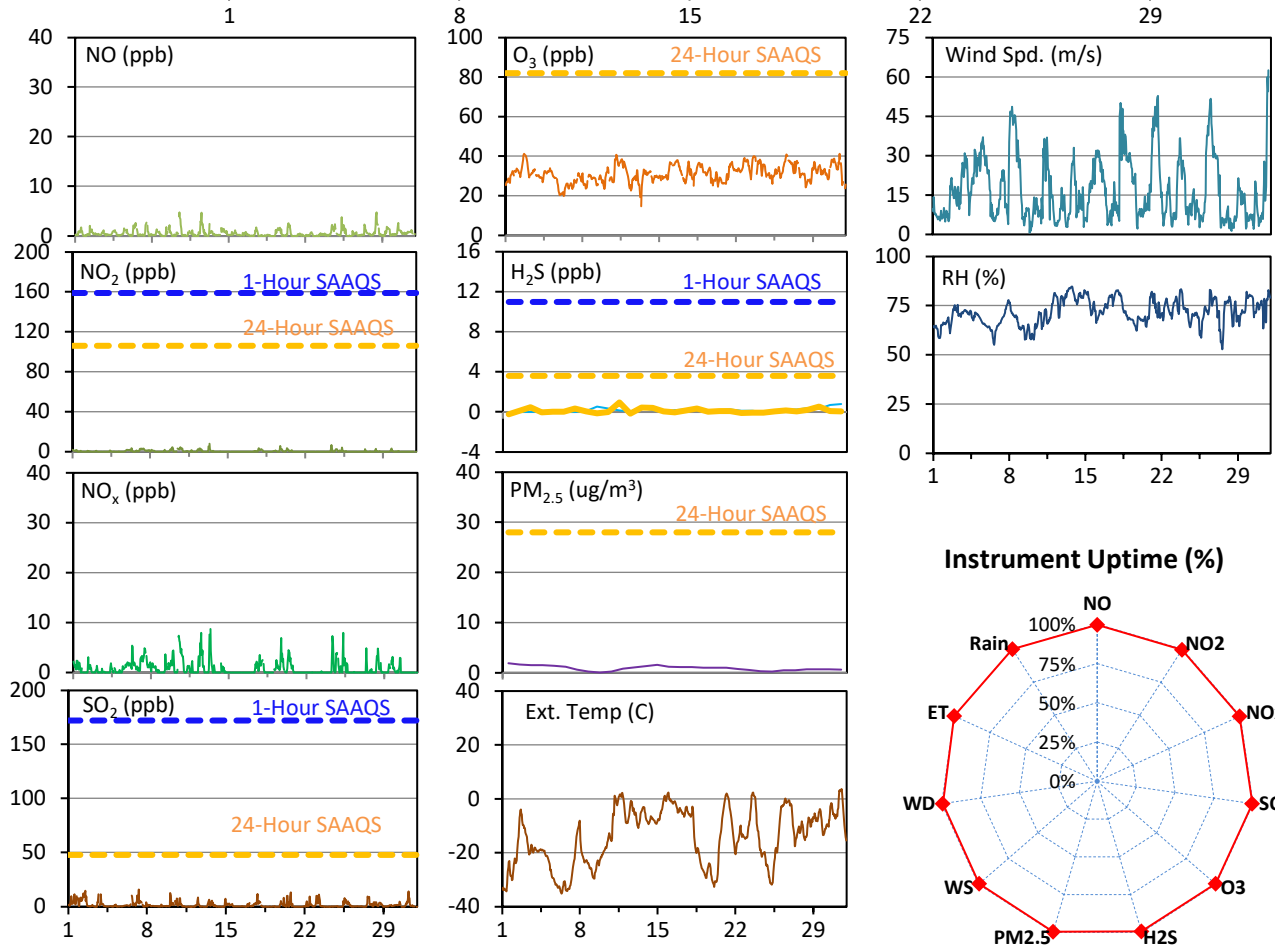
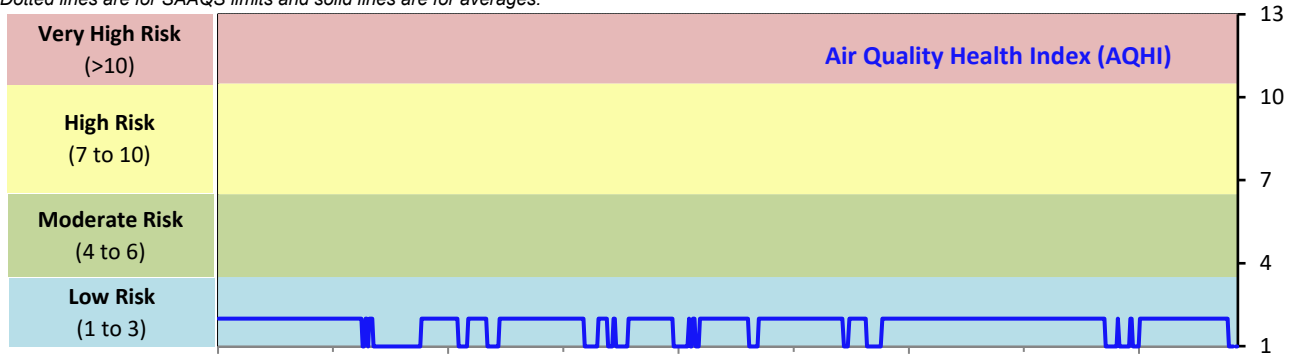
# SESAA Weyburn Station - January 2022 Summary Report

Pollutants		Month Records		24-Hour Records				1-Hour Records			
Name	Conc. Unit	Avg. Conc.	Uptime	Maximum		SAAQS Standard	Exceed Days	Maximum		SAAQS Standard	Exceed Hours
				Conc.	Time			Conc.	Time		
NO	ppb	0.5	99.6%	1.1	Jan-28	-	-	4.7	Jan-28 11:00	-	-
NO <sub>2</sub>	ppb	0.4	99.6%	1.8	Jan-7	106	0	8.2	Jan-13 08:00	159	0
NO <sub>x</sub>	ppb	0.8	99.6%	2.6	Jan-10	-	-	8.7	Jan-13 08:00	-	-
SO <sub>2</sub>	ppb	1.6	99.6%	5.8	Jan-2	48	0	16.0	Jan-07 06:00	172	0
O <sub>3</sub>	ppb	31	99.6%	37	Jan-11	-	-	41	Jan-02 16:00	82	0
H <sub>2</sub> S	ppb	0.2	99.6%	0.5	Jan-28	3.6	0	4.5	Jan-10 15:00	11	0
PM <sub>2.5</sub>	ug/m3	1	99.6%	3	Jan-14	28	0	7	Jan-14 09:00	-	-

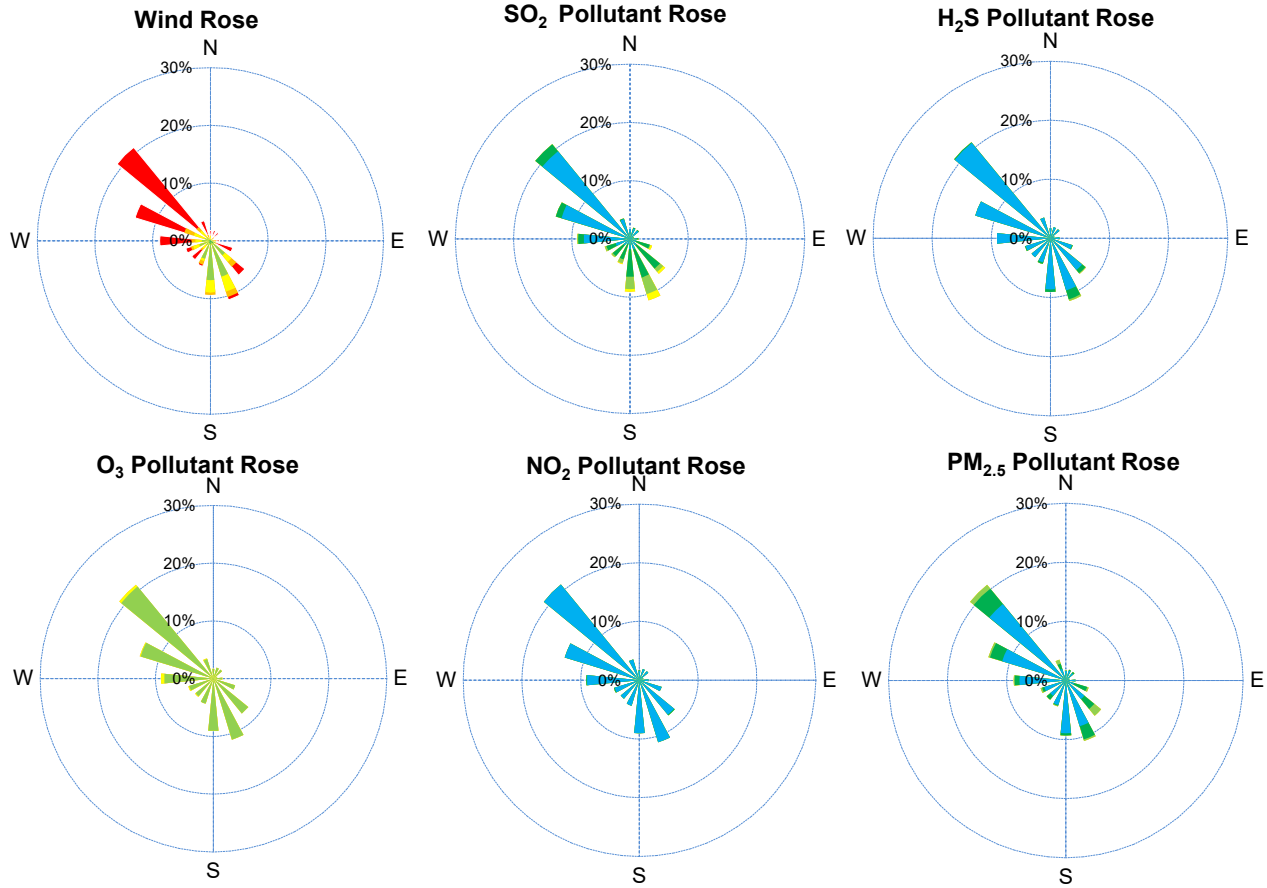
SAAQS: Saskatchewan Ambient Air Quality Standards

\* Air Quality Standard refers to Saskatchewan Ambient Air Quality Standards (SAAQS).

\* Dotted lines are for SAAQS limits and solid lines are for averages.



# SESAA Weyburn Station - January 2022 Summary Report



Parameters	Unit	Color Code for Wind Spd & Pollutant Conc. Class					
		0.3 ≤ WS < 1.4	1.4 ≤ WS < 3.1	3.1 ≤ WS < 7.8	7.8 ≤ WS < 10.8	10.8 ≤ WS < 13.6	WS ≥ 13.6
SO <sub>2</sub>	ppb	0 ≤ C < 1	1 ≤ C < 5	5 ≤ C < 10	10 ≤ C < 57	57 ≤ C < 172	C ≥ 172
NO <sub>2</sub>	ppb	0 ≤ C < 5	5 ≤ C < 15	15 ≤ C < 30	30 ≤ C < 100	100 ≤ C < 212	C ≥ 212
O <sub>3</sub>	ppb	0 ≤ C < 10	10 ≤ C < 20	20 ≤ C < 40	40 ≤ C < 60	60 ≤ C < 82	C ≥ 82
H <sub>2</sub> S	ppb	0 ≤ C < 1	1 ≤ C < 3.6	3.6 ≤ C < 5	5 ≤ C < 8	8 ≤ C < 10.8	C ≥ 10.8
PM <sub>2.5</sub>	ug/m <sup>3</sup>	0 ≤ C < 2	2 ≤ C < 4	4 ≤ C < 10	10 ≤ C < 20	20 ≤ C < 30	C ≥ 30

## Monthly Update

\*All data has been slope, intercept, and baseline corrected. Data may change after validation process.

\*All compliance parameters were within the Saskatchewan Ambient Air Quality Standards.

\*All compliance parameters are above 90% operational.

\*3 hours of data for all parameters is flagged as "analyzer failure" due to cold and wind extremes causing data interruptions.