

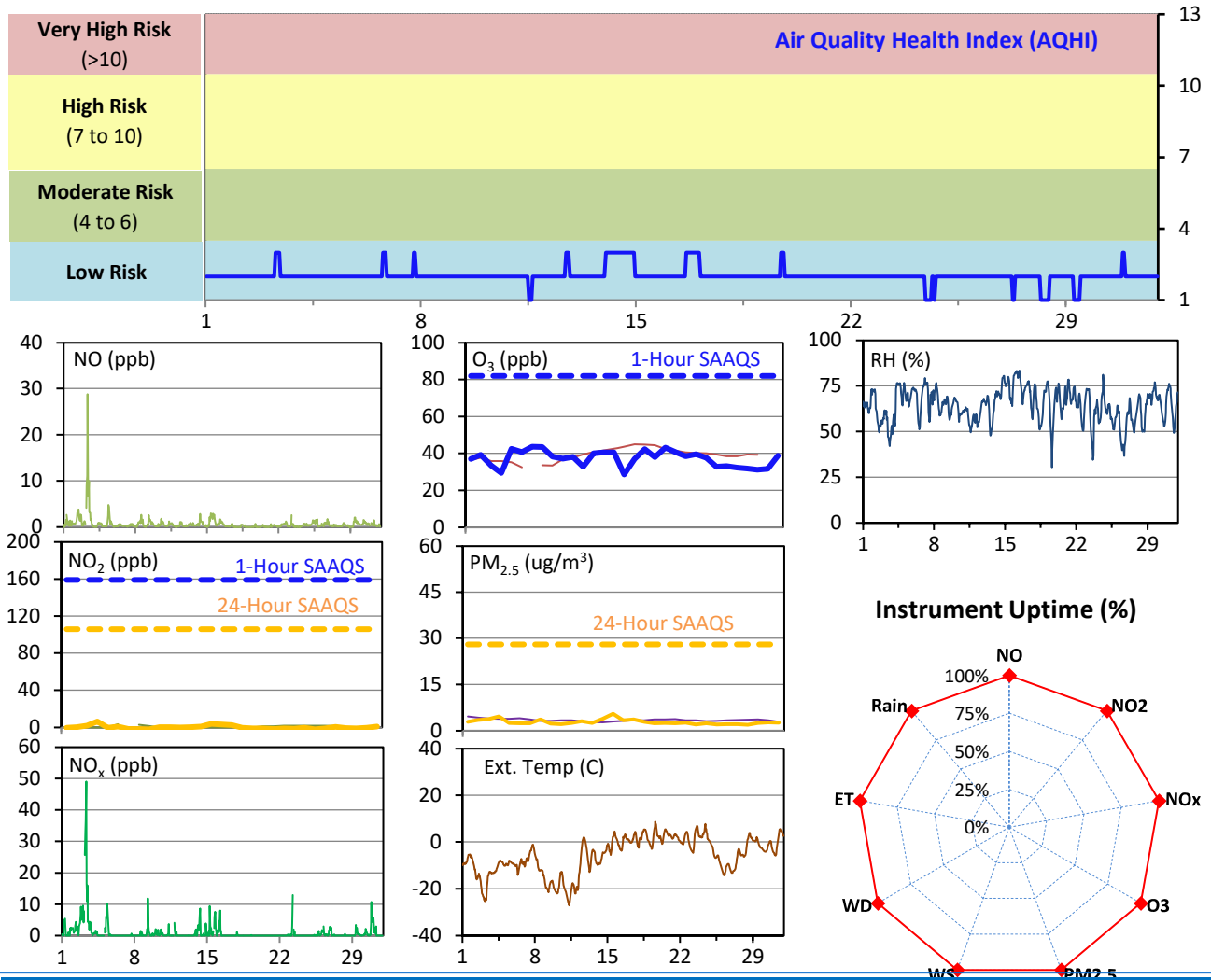
# SESAA Esterhazy Station - March 2022 Summary Report

Pollutants		Month Records		24-Hour Records				1-Hour Records			
Name	Conc. Unit	Avg. Conc.	Uptime	Maximum		SAAQS Standard	Exceed Days	Maximum		SAAQS Standard	Exceed Hours
				Conc.	Time			Conc.	Time		
NO	ppb	0.6	100.0%	4.2	Mar-3	-	-	28.8	Mar-03 08:00	-	-
NO <sub>2</sub>	ppb	0.8	100.0%	6.6	Mar-3	106	0	25.5	Mar-03 07:00	159	0
NO <sub>x</sub>	ppb	1.0	100.0%	10.7	Mar-3	-	-	49.1	Mar-03 08:00	-	-
O <sub>3</sub>	ppb	37	100.0%	44	Mar-6	-	-	50	Mar-16 19:00	82	0
PM <sub>2.5</sub>	ug/m3	3	100.0%	6	Mar-14	28	0	16	Mar-31 05:00	-	-

SAAQS: Saskatchewan Ambient Air Quality Standards

\* Air Quality Standard refers to Saskatchewan Ambient Air Quality Standards (SAAQS).

\* Dotted lines are for SAAQS limits and solid lines are for averages.



## Monthly Update

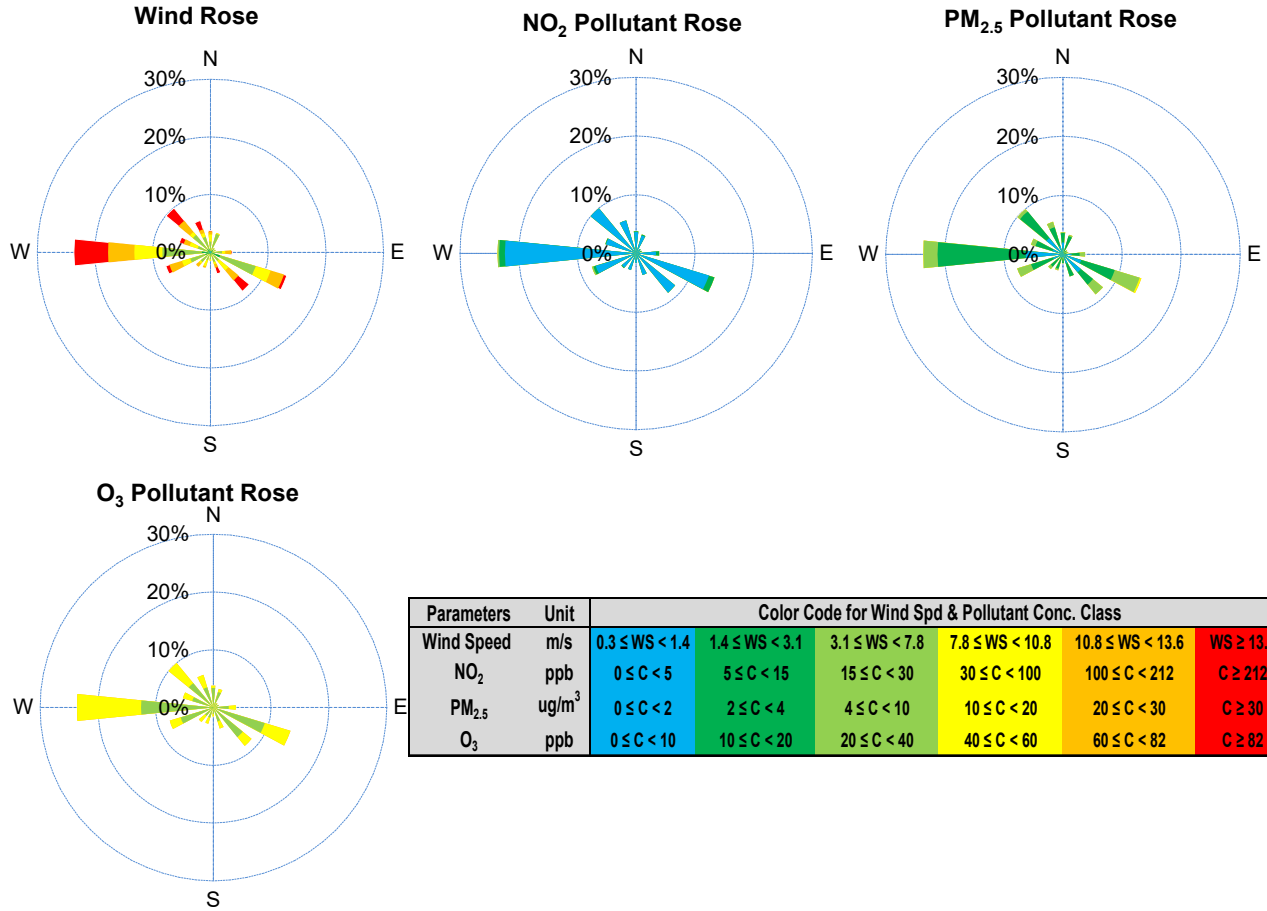
\*All data has been slope, intercept, and baseline corrected. Data may change after validation process.

\*All compliance parameters were within the Saskatchewan Ambient Air Quality Standards.

\*All compliance parameters were greater than 90% operational.

\*Routine quarterly calibrations was not completed due to issue with site access.

# SESAA Esterhazy Station - March 2022 Summary Report



Parameters	Unit	Color Code for Wind Spd & Pollutant Conc. Class					
Wind Speed	m/s	0.3 ≤ WS < 1.4	1.4 ≤ WS < 3.1	3.1 ≤ WS < 7.8	7.8 ≤ WS < 10.8	10.8 ≤ WS < 13.6	WS ≥ 13.6
NO <sub>2</sub>	ppb	0 ≤ C < 5	5 ≤ C < 15	15 ≤ C < 30	30 ≤ C < 100	100 ≤ C < 212	C ≥ 212
PM <sub>2.5</sub>	ug/m <sup>3</sup>	0 ≤ C < 2	2 ≤ C < 4	4 ≤ C < 10	10 ≤ C < 20	20 ≤ C < 30	C ≥ 30
O <sub>3</sub>	ppb	0 ≤ C < 10	10 ≤ C < 20	20 ≤ C < 40	40 ≤ C < 60	60 ≤ C < 82	C ≥ 82

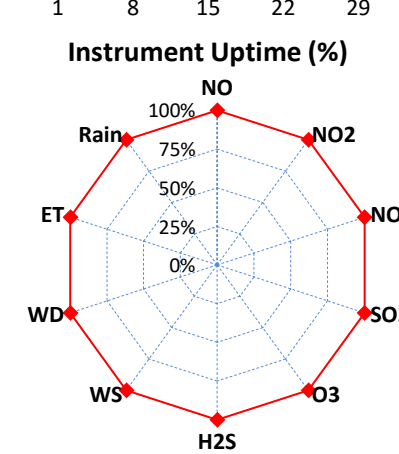
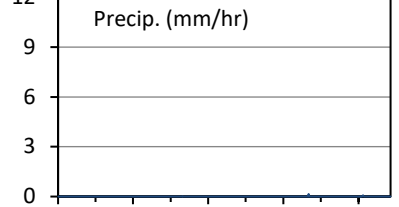
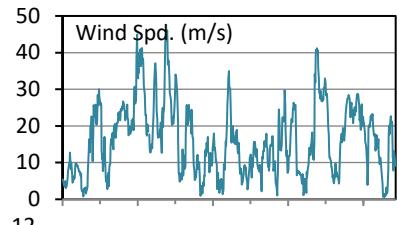
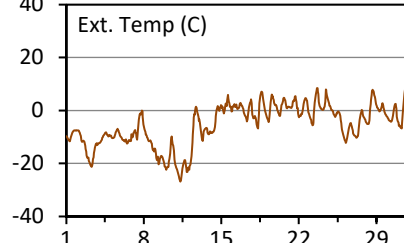
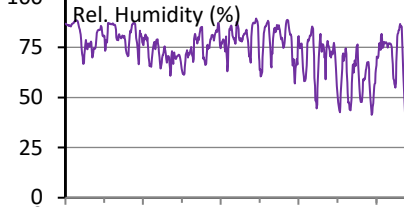
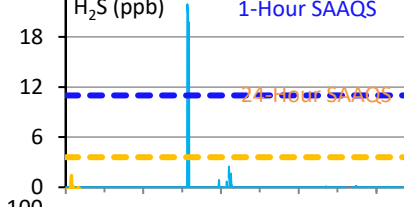
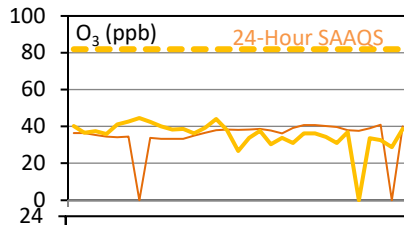
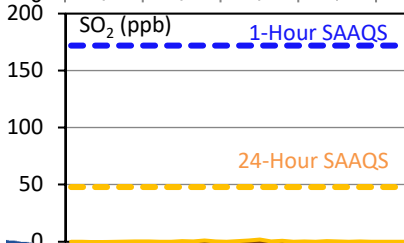
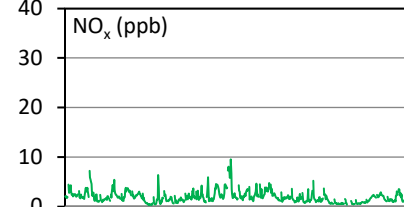
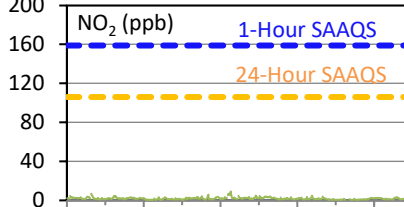
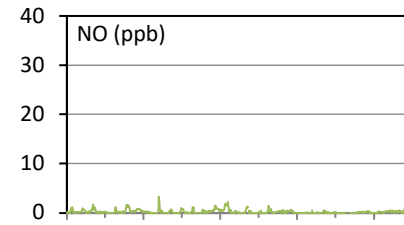
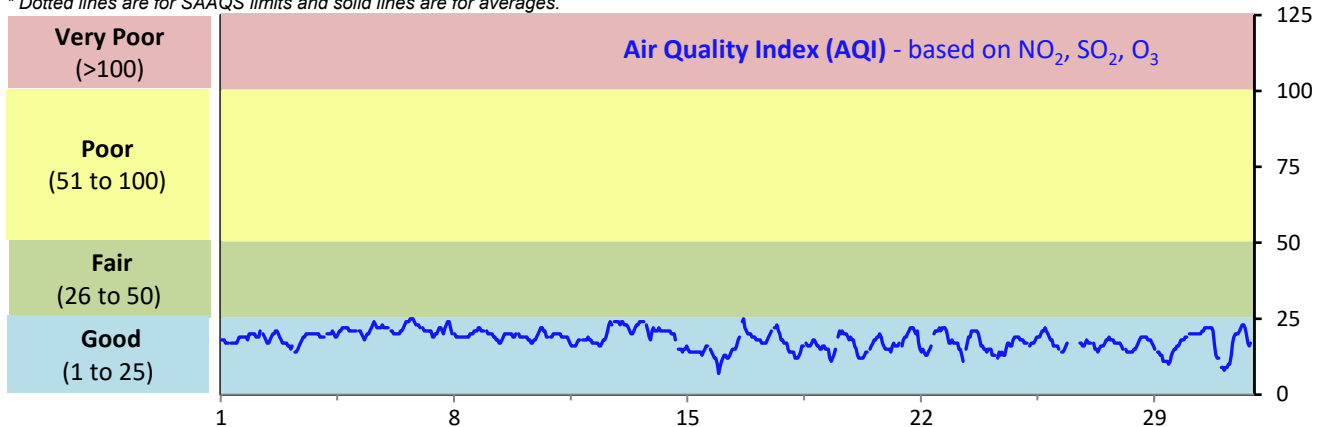
# SESAA Glen Ewen Station - March 2022 Summary Report

Pollutants		Month Records		24-Hour Records				1-Hour Records			
Name	Conc. Unit	Avg. Conc.	Uptime	Maximum		SAAQS Standard	Exceed Days	Maximum		SAAQS Standard	Exceed Hours
				Conc.	Time			Conc.	Time		
NO	ppb	0.2	100.0%	0.9	Mar-15	-	-	3.3	Mar-09 09:00	-	-
NO <sub>2</sub>	ppb	1.7	100.0%	3.5	Mar-15	106	0	9.0	Mar-15 22:00	159	0
NO <sub>x</sub>	ppb	1.9	100.0%	4.4	Mar-15	-	-	9.6	Mar-15 22:00	-	-
SO <sub>2</sub>	ppb	0.3	100.0%	0.8	Mar-16	48	0	15.1	Mar-17 16:00	172	0
O <sub>3</sub>	ppb	36	100.0%	45	Mar-6	-	-	50	Mar-16 16:00	82	0
H <sub>2</sub> S	ppb	0.1	100.0%	< 0.1	#N/A	3.6	0	21.9	Mar-11 23:00	11	3

SAAQS: Saskatchewan Ambient Air Quality Standards

\* Air Quality Standard refers to Saskatchewan Ambient Air Quality Standards (SAAQS).

\* Dotted lines are for SAAQS limits and solid lines are for averages.



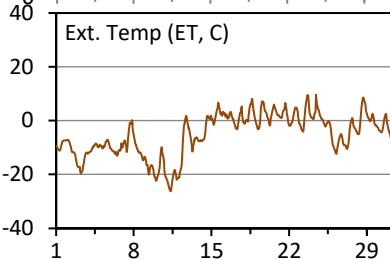
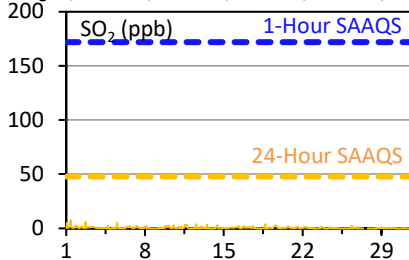
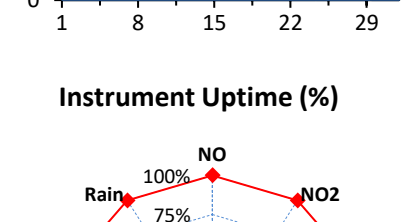
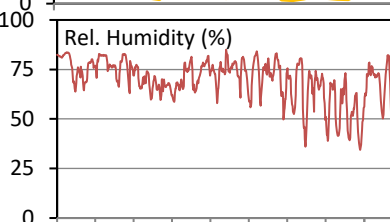
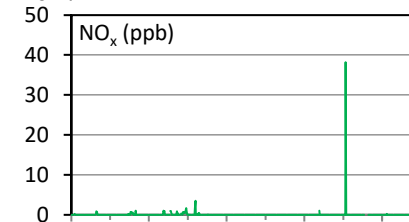
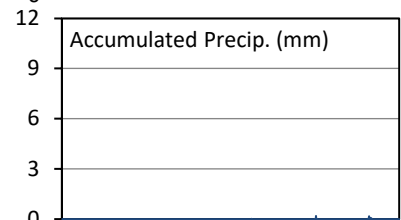
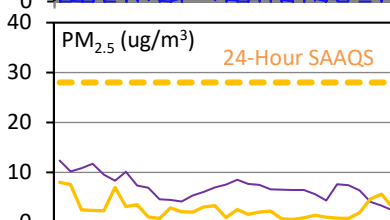
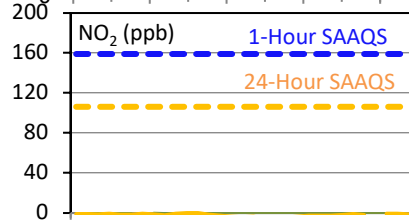
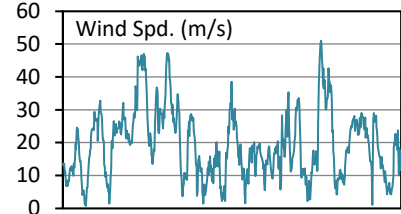
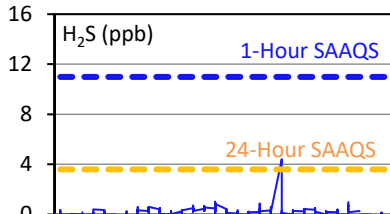
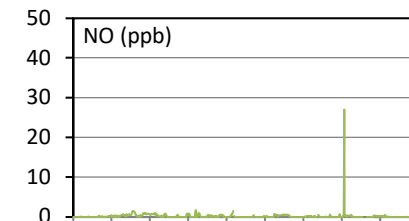
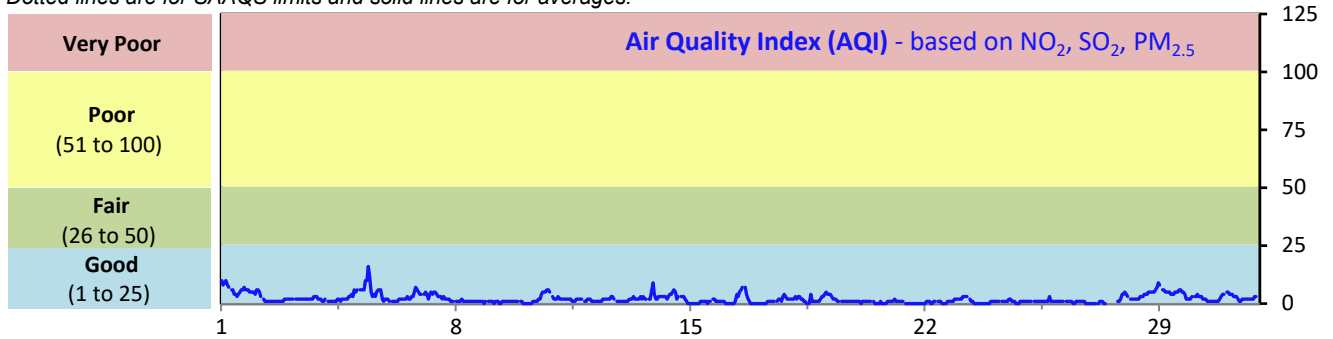
# SESAA Oxbow Station - March 2022 Summary Report

Pollutants		Month Records		24-Hour Records				1-Hour Records			
Name	Conc. Unit	Avg. Conc.	Uptime	Maximum		SAAQS Standard	Exceed Days	Maximum		SAAQS Standard	Exceed Hours
				Conc.	Time			Conc.	Time		
NO	ppb	0.2	100.0%	0.7	Mar-06	-	-	27.0	Mar-25 17:00	-	-
NO <sub>2</sub>	ppb	< 0.1	100.0%	< 0.1	Mar-06	106	0	11.3	Mar-25 17:00	159	0
NO <sub>x</sub>	ppb	0.1	100.0%	< 0.1	Mar-06	-	-	38.2	Mar-25 17:00	-	-
SO <sub>2</sub>	ppb	0.5	100.0%	2.0	Mar-1	48	0	7.6	Mar-01 09:00	172	0
H <sub>2</sub> S	ppb	0.2	100.0%	0.5	Mar-14	3.6	0	4.4	Mar-21 00:00	11	0
PM <sub>2.5</sub>	ug/m3	3	100.0%	8	Mar-1	28	0	19	Mar-05 09:00	-	-

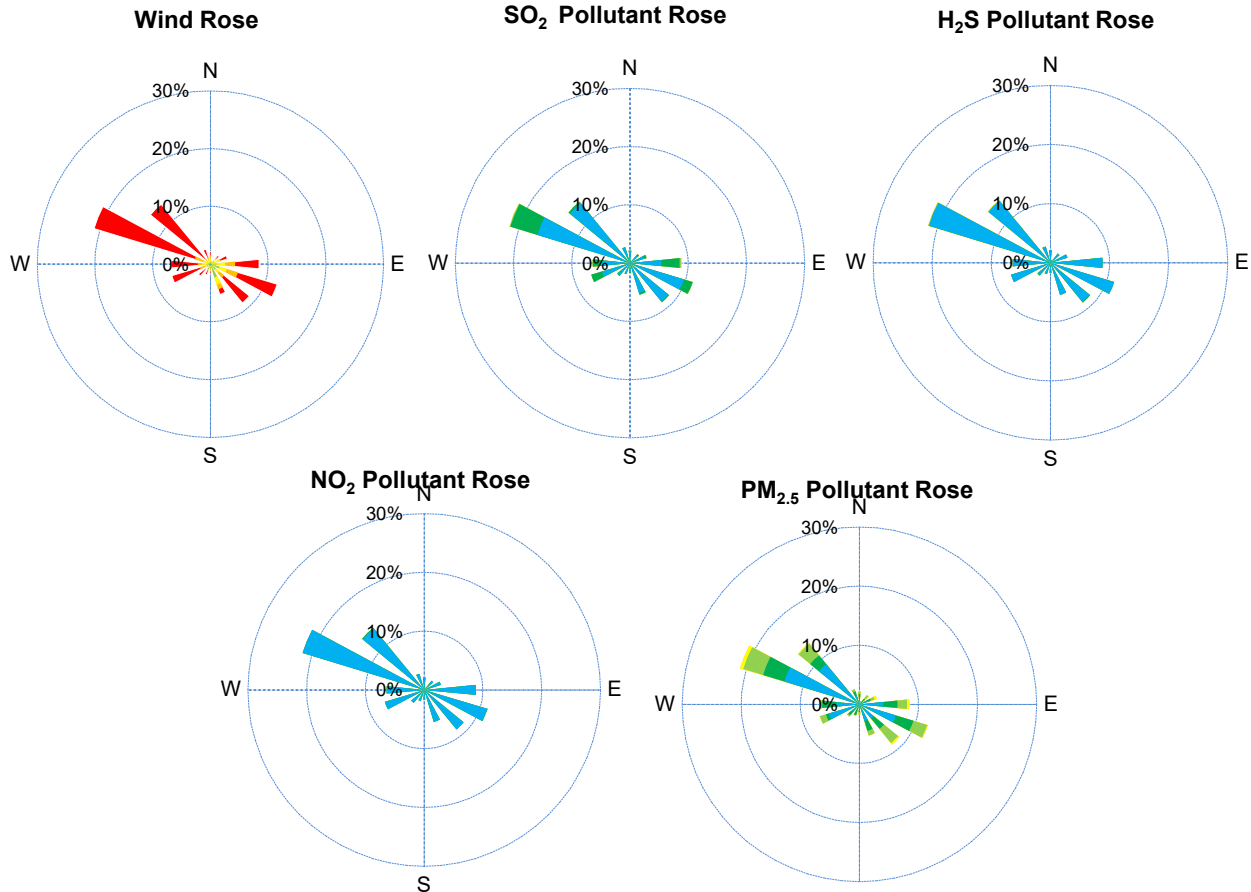
SAAQS: Saskatchewan Ambient Air Quality Standards

\* Air Quality Standard refers to Saskatchewan Ambient Air Quality Standards (SAAQS).

\* Dotted lines are for SAAQS limits and solid lines are for averages.



# SESAA Oxbow Station - March 2022 Summary Report

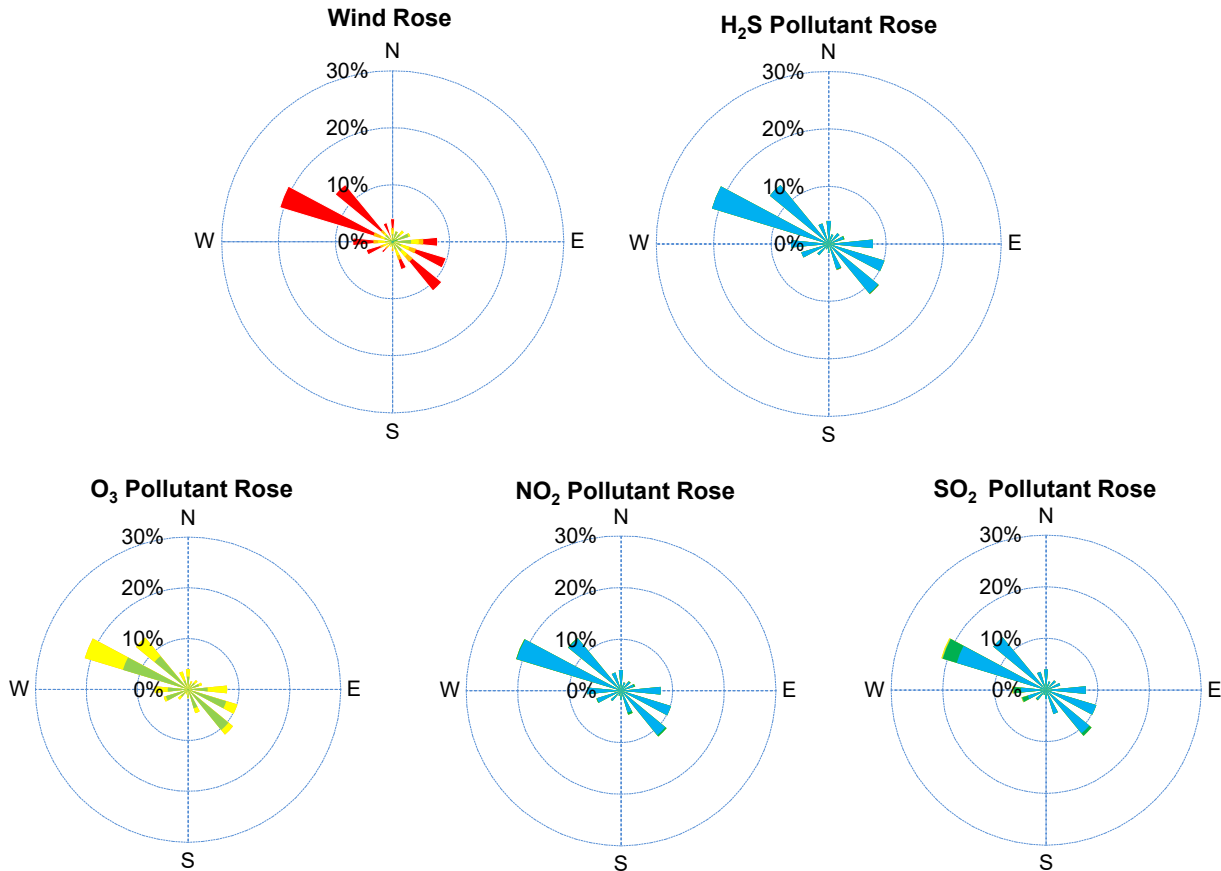


Parameters	Unit	Color Code for Wind Spd & Pollutant Conc. Class						
Wind Speed	m/s	0.3 ≤ WS < 1.4	1.4 ≤ WS < 3.1	3.1 ≤ WS < 7.8	7.8 ≤ WS < 10.8	10.8 ≤ WS < 13.6	WS ≥ 13.6	
SO <sub>2</sub>	ppb	0 ≤ C < 1	1 ≤ C < 5	5 ≤ C < 10	10 ≤ C < 57	57 ≤ C < 172	C ≥ 172	
NO <sub>2</sub>	ppb	0 ≤ C < 5	5 ≤ C < 15	15 ≤ C < 30	30 ≤ C < 100	100 ≤ C < 212	C ≥ 212	
H <sub>2</sub> S	ppb	0 ≤ C < 1	1 ≤ C < 3.6	3.6 ≤ C < 5	5 ≤ C < 8	8 ≤ C < 10.8	C ≥ 10.8	
PM <sub>2.5</sub>	ug/m <sup>3</sup>	0 ≤ C < 2	2 ≤ C < 4	4 ≤ C < 10	10 ≤ C < 20	20 ≤ C < 30	C ≥ 30	

## Monthly Update

- \*All data has been slope, intercept, and baseline corrected. Data may change after validation process.
- \*All compliance parameters were within the Saskatchewan Ambient Air Quality Standards.
- \*All compliance parameters had greater than 90% operational uptime.
- \*Routine quarterly calibrations were completed on March 27.

# SESAA Glen Ewen Station - March 2022 Summary Report



Parameters	Unit	Color Code for Wind Spd & Pollutant Conc. Class						
Wind Speed	m/s	0.3 ≤ WS < 1.4	1.4 ≤ WS < 3.1	3.1 ≤ WS < 7.8	7.8 ≤ WS < 10.8	10.8 ≤ WS < 13.6	WS ≥ 13.6	
SO <sub>2</sub>	ppb	0 ≤ C < 1	1 ≤ C < 5	5 ≤ C < 10	10 ≤ C < 57	57 ≤ C < 172	C ≥ 172	
NO <sub>2</sub>	ppb	0 ≤ C < 5	5 ≤ C < 15	15 ≤ C < 30	30 ≤ C < 100	100 ≤ C < 212	C ≥ 212	
O <sub>3</sub>	ppb	0 ≤ C < 10	10 ≤ C < 20	20 ≤ C < 40	40 ≤ C < 60	60 ≤ C < 82	C ≥ 82	
H <sub>2</sub> S	ppb	0 ≤ C < 1	1 ≤ C < 3.6	3.6 ≤ C < 5	5 ≤ C < 8	8 ≤ C < 10.8	C ≥ 10.8	

## Monthly Update

\*All data has been slope, intercept, and baseline corrected. Data may change after validation process.

\*All compliance parameters were within the Saskatchewan Ambient Air Quality Standards with the exception of three 1-hour H<sub>2</sub>S exceedances

\*All compliance parameters are greater than 90% operational.

\*Routine quarterly calibrations were completed on March 26.

## Exceedance Summary

1-hour Exceedance Information			Summary of Other Parameters During Exceedance							
Pollutant	Conc. ppb	Exceedance Time mmm-dd hh:mm	WS m/s	WD deg	AQI -	Rain mm	SO <sub>2</sub> ppb	NO <sub>2</sub> ppb	O <sub>3</sub> ppb	H <sub>2</sub> S ppb
H2S	21.9	Mar-11 23:00	5.0	167	18	0.0	0.3	1.9	36	21.9
H2S	20.8	Mar-12 00:00	7.1	170	19	0.0	0.5	1.4	37	20.8
H2S	19.8	Mar-12 02:00	5.4	143	18	0.0	0.0	2.1	36	19.8

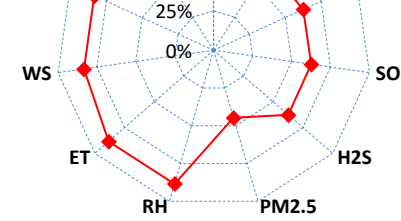
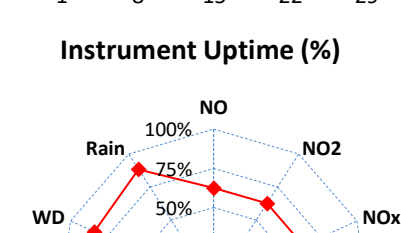
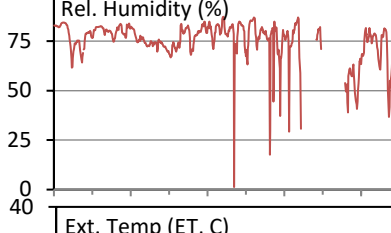
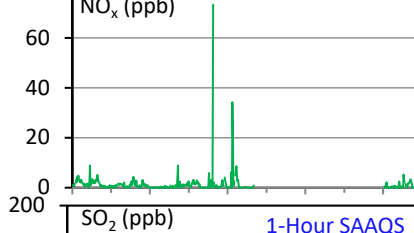
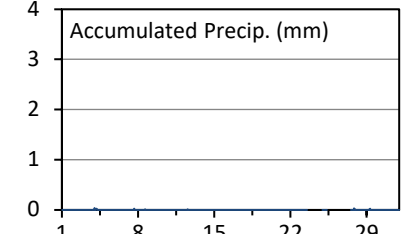
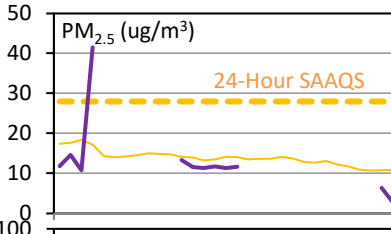
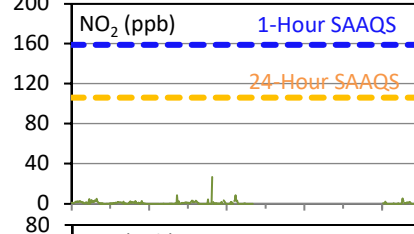
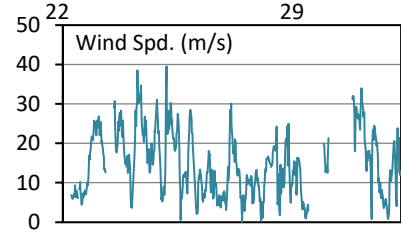
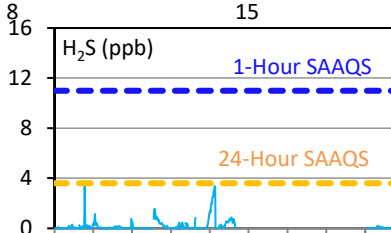
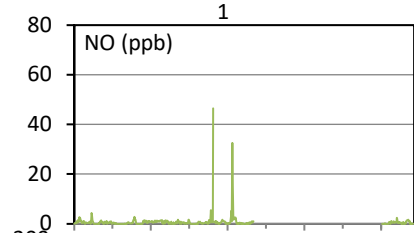
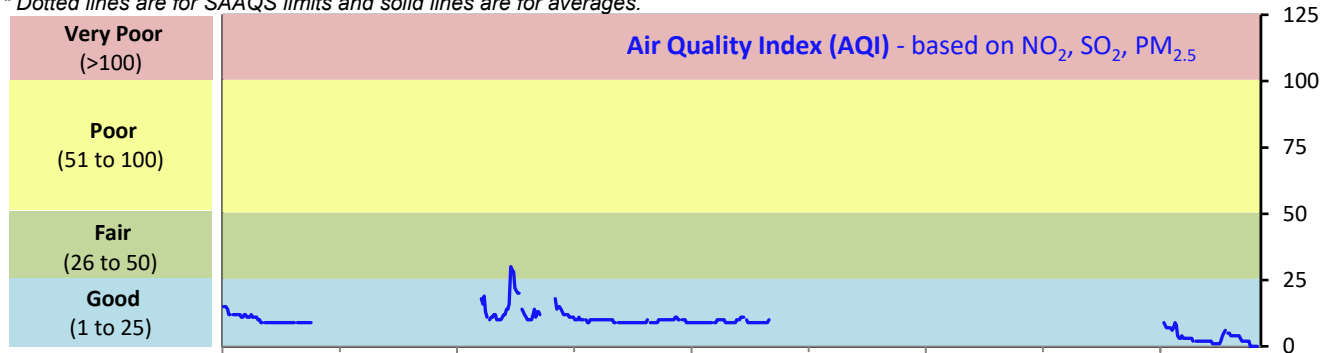
# SESAA Stoughton Station - March 2022 Summary Report

Pollutants		Month Records		24-Hour Records				1-Hour Records			
Name	Conc. Unit	Avg. Conc.	Uptime	Maximum		SAAQS Standard	Exceed Days	Maximum		SAAQS Standard	Exceed Hours
				Conc.	Time			Conc.	Time		
NO	ppb	0.7	62.6%	3.2	Mar-15	-	-	46.5	Mar-13 16:00	-	-
NO <sub>2</sub>	ppb	0.7	62.6%	1.5	Mar-1	106	0	26.9	Mar-13 16:00	159	0
NO <sub>x</sub>	ppb	1.3	62.6%	2.3	Mar-1	-	-	73.3	Mar-13 16:00	-	-
SO <sub>2</sub>	ppb	0.4	62.6%	1.4	Mar-15	48	0	6.2	Mar-01 14:00	172	0
H <sub>2</sub> S	ppb	0.2	62.6%	0.6	Mar-10	3.6	0	3.8	Mar-03 17:00	11	0
PM <sub>2.5</sub>	ug/m3	11	44.6%	19	Mar-9	28	0	41	Mar-09 14:00	-	-

SAAQS: Saskatchewan Ambient Air Quality Standards

\* Air Quality Standard refers to Saskatchewan Ambient Air Quality Standards (SAAQS).

\* Dotted lines are for SAAQS limits and solid lines are for averages.



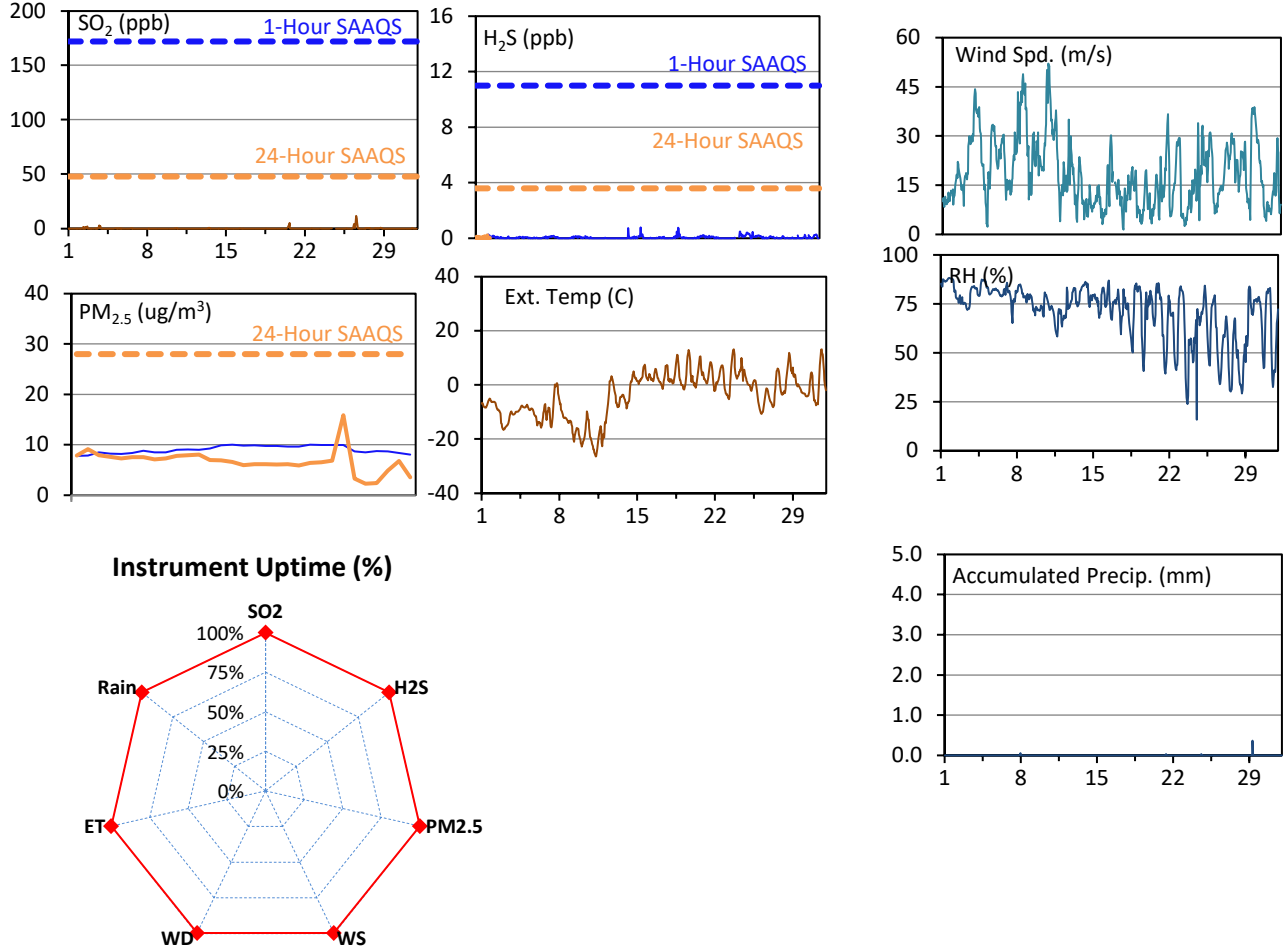
# SESAA Torquay Station - March 2022 Summary Report

Pollutants		Month Records		24-Hour Records				1-Hour Records			
Name	Conc. Unit	Avg. Conc.	Uptime	Maximum		SAAQS Standard	Exceed Days	Maximum		SAAQS Standard	Exceed Hours
				Conc.	Time			Conc.	Time		
SO <sub>2</sub>	ppb	0.1	100.0%	< 0.1	Feb-08	48	0	11.7	Mar-26 13:00	172	0
H <sub>2</sub> S	ppb	< 0.1	100.0%	0.2	Mar-25	3.6	0	13.9	Mar-15 21:00	11	0
PM <sub>2.5</sub>	ug/m3	7	100.0%	16	Mar-24	28	0	83	Mar-24 17:00	-	-

SAAQS: Saskatchewan Ambient Air Quality Standards

\* Air Quality Standard refers to Saskatchewan Ambient Air Quality Standards (SAAQS).

\* Dotted lines are for SAAQS limits and solid lines are for averages.



## Monthly Update

\*All data has been slope, intercept, and baseline corrected. Data may change after validation process.

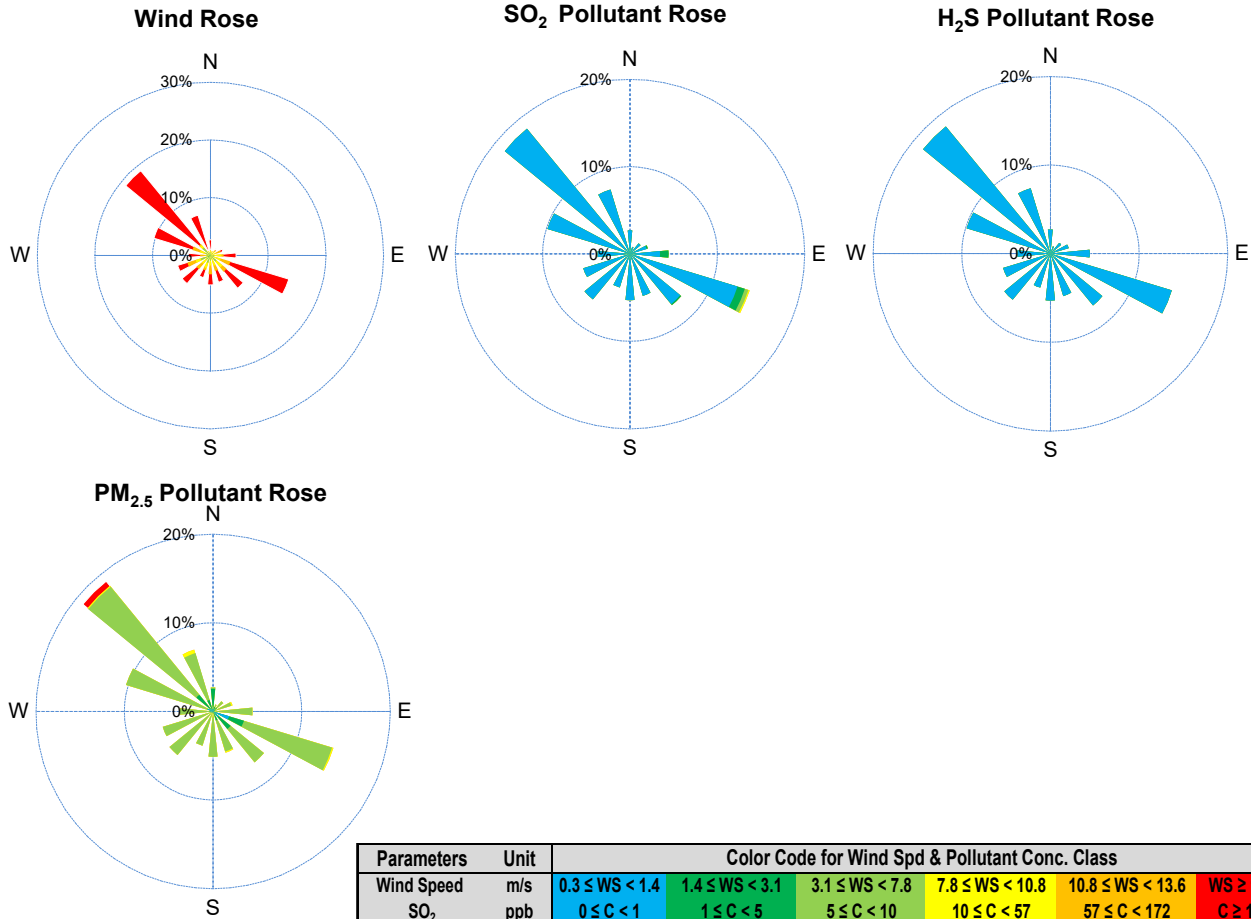
\*All compliance parameters were within the Saskatchewan Ambient Air Quality Standards.

\*All compliance parameters were greater than 90% operational.

\*Routine quarterly calibrations were completed on March 24.

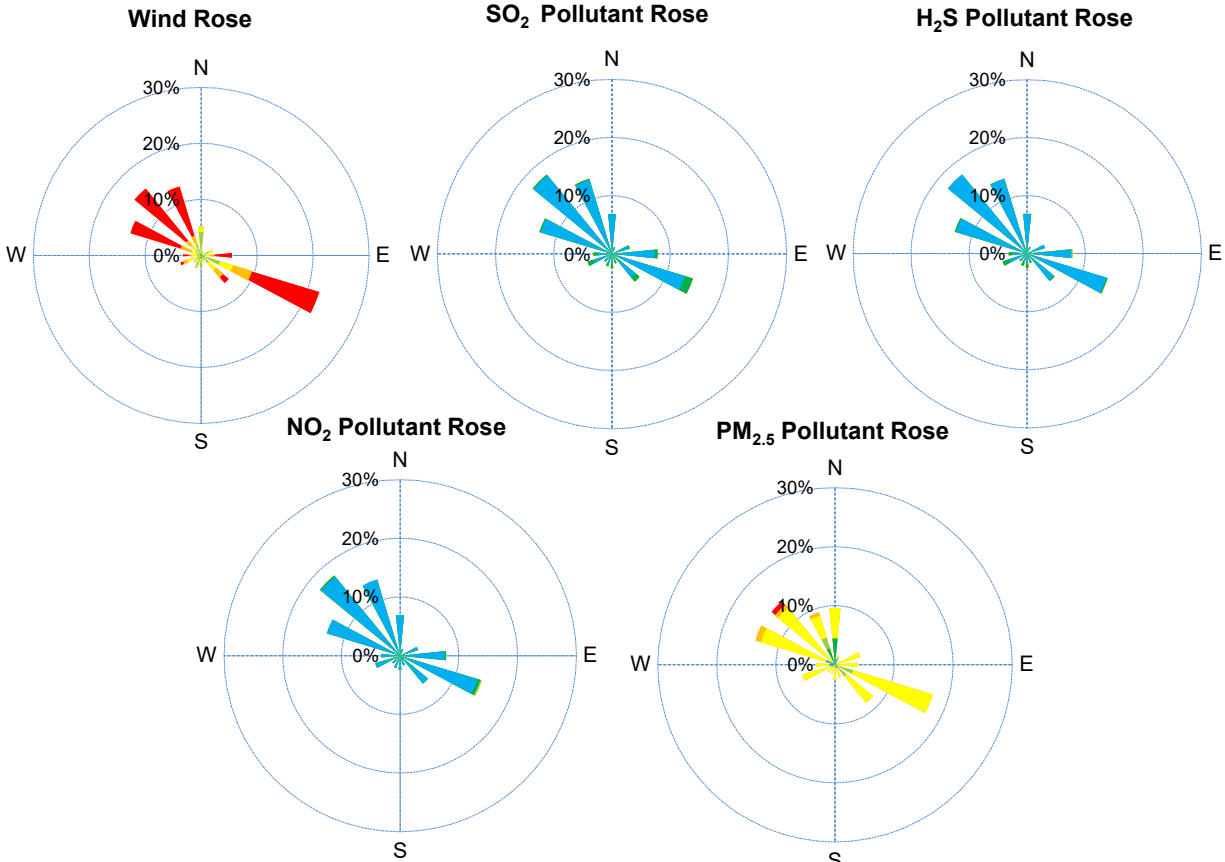


# SESAA Torquay Station - March 2022 Summary Report



Parameters	Unit	Color Code for Wind Spd & Pollutant Conc. Class					
Wind Speed	m/s	$0.3 \leq WS < 1.4$	$1.4 \leq WS < 3.1$	$3.1 \leq WS < 7.8$	$7.8 \leq WS < 10.8$	$10.8 \leq WS < 13.6$	$WS \geq 13.6$
SO <sub>2</sub>	ppb	$0 \leq C < 1$	$1 \leq C < 5$	$5 \leq C < 10$	$10 \leq C < 57$	$57 \leq C < 172$	$C \geq 172$
NO <sub>2</sub>	ppb	$0 \leq C < 5$	$5 \leq C < 15$	$15 \leq C < 30$	$30 \leq C < 100$	$100 \leq C < 212$	$C \geq 212$
O <sub>3</sub>	ppb	$0 \leq C < 10$	$10 \leq C < 20$	$20 \leq C < 40$	$40 \leq C < 60$	$60 \leq C < 82$	$C \geq 82$
H <sub>2</sub> S	ppb	$0 \leq C < 1$	$1 \leq C < 3.6$	$3.6 \leq C < 5$	$5 \leq C < 8$	$8 \leq C < 10.8$	$C \geq 10.8$
PM <sub>2.5</sub>	ug/m <sup>3</sup>	$0 \leq C < 2$	$2 \leq C < 4$	$4 \leq C < 10$	$10 \leq C < 20$	$20 \leq C < 30$	$C \geq 30$

# SESAA Stoughton Station - March 2022 Summary Report



Parameters	Unit	Color Code for Wind Spd & Pollutant Conc. Class						
Wind Speed	m/s	0.3 ≤ WS < 1.4	1.4 ≤ WS < 3.1	3.1 ≤ WS < 7.8	7.8 ≤ WS < 10.8	10.8 ≤ WS < 13.6	WS ≥ 13.6	
SO <sub>2</sub>	ppb	0 ≤ C < 1	1 ≤ C < 5	5 ≤ C < 10	10 ≤ C < 57	57 ≤ C < 172	C ≥ 172	
NO <sub>2</sub>	ppb	0 ≤ C < 5	5 ≤ C < 15	15 ≤ C < 30	30 ≤ C < 100	100 ≤ C < 212	C ≥ 212	
H <sub>2</sub> S	ppb	0 ≤ C < 1	1 ≤ C < 3.6	3.6 ≤ C < 5	5 ≤ C < 8	8 ≤ C < 10.8	C ≥ 10.8	
PM <sub>2.5</sub>	ug/m <sup>3</sup>	0 ≤ C < 2	2 ≤ C < 4	4 ≤ C < 10	10 ≤ C < 20	20 ≤ C < 30	C ≥ 30	

## Monthly Update

- \*All data has been slope, intercept, and baseline corrected. Data may change after validation process.
- \*All compliance parameters were within the Saskatchewan Ambient Air Quality Standards.
- \*All compliance parameters had less than 90% operational uptime.
- \* Some data was not collected due to Intermittent analyzer issues caused by cold and snow.
- \*Routine quarterly calibrations were completed on March 28.

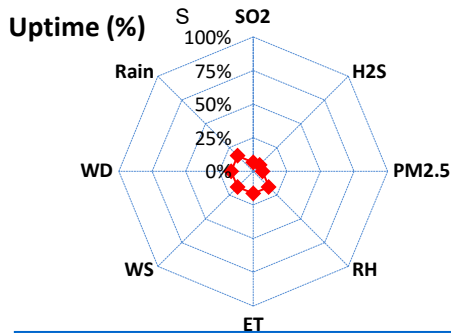
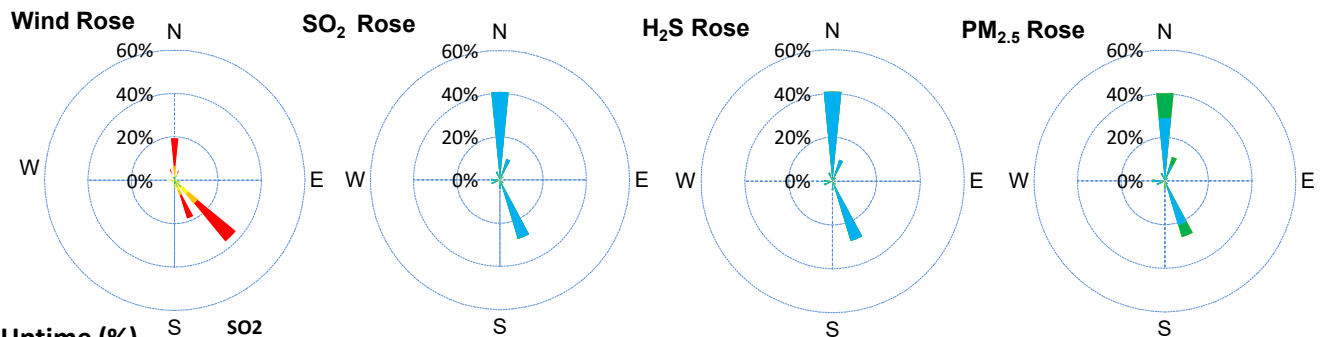
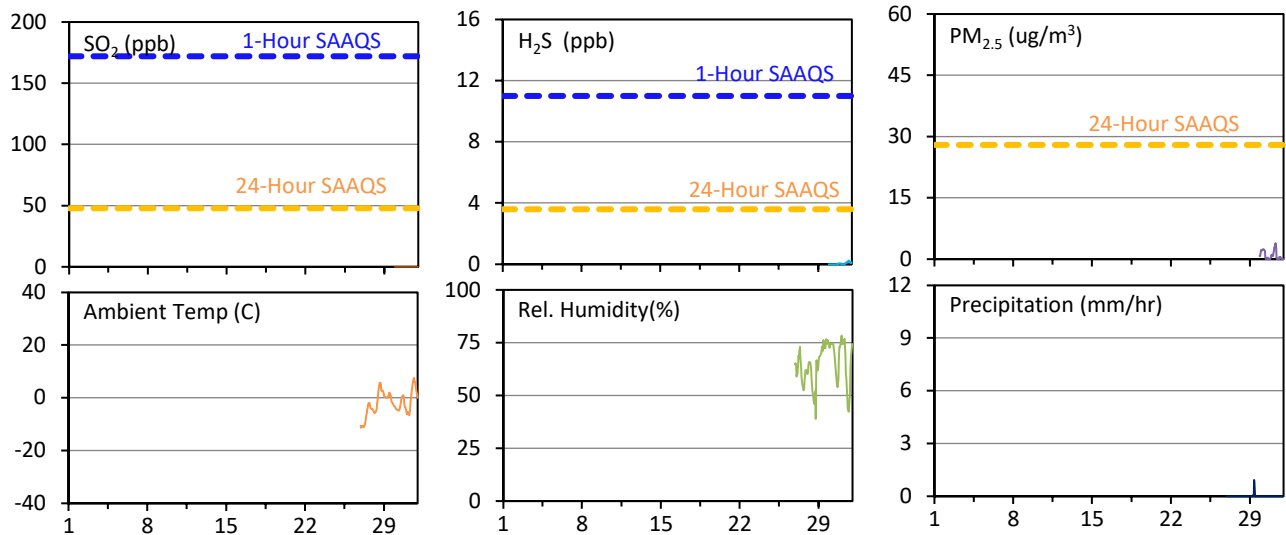
# SESAA Wauchope Station - March 2022 Summary Report

Pollutants		Month Records		24-Hour Records				1-Hour Records			
Name	Conc. Unit	Avg. Conc.	Uptime	Maximum		SAAQS Objective	Exceed Days	Maximum		SAAQS Objective	Exceed Hours
				Conc.	Time			Conc.	Time		
SO <sub>2</sub>	ppb	< 0.1	6.7%	< 0.1	Mar-29	48	0	< 0.1	Mar-29 20:00	172	0
H <sub>2</sub> S	ppb	< 0.1	6.7%	< 0.1	Mar-20	3.6	0	0.2	Mar-31 17:00	11	0
PM <sub>2.5</sub>	ug/m <sup>3</sup>	1	7.1%	1	Mar-30	28	0	4	Mar-31 07:00	-	-

SAAQS: Saskatchewan Ambient Air Quality Standards

\* Air Quality Standard refers to Saskatchewan Ambient Air Quality Standards (SAAQS).

\* Dotted lines are for SAAQS limits and solid lines are for averages.



Parameters	Unit	Color Code for Wind Spd & Pollutant Conc. Class					
Wind Speed	m/s	0.3 ≤ WS < 1.4	1.4 ≤ WS < 3.1	3.1 ≤ WS < 7.8	7.8 ≤ WS < 10.8	10.8 ≤ WS < 13.6	WS ≥ 13.6
SO <sub>2</sub>	ppb	0 ≤ C < 1	1 ≤ C < 5	5 ≤ C < 10	10 ≤ C < 57	57 ≤ C < 172	C ≥ 172
H <sub>2</sub> S	ppb	0 ≤ C < 1	1 ≤ C < 3.6	3.6 ≤ C < 5	5 ≤ C < 8	8 ≤ C < 10.8	C ≥ 10.8
PM <sub>2.5</sub>	ug/m <sup>3</sup>	0 ≤ C < 2	2 ≤ C < 4	4 ≤ C < 10	10 ≤ C < 20	20 ≤ C < 30	C ≥ 30

## Monthly Update

\*Wauchope was not operational until calibration on March 29.

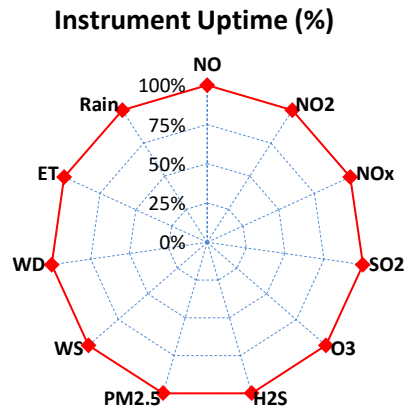
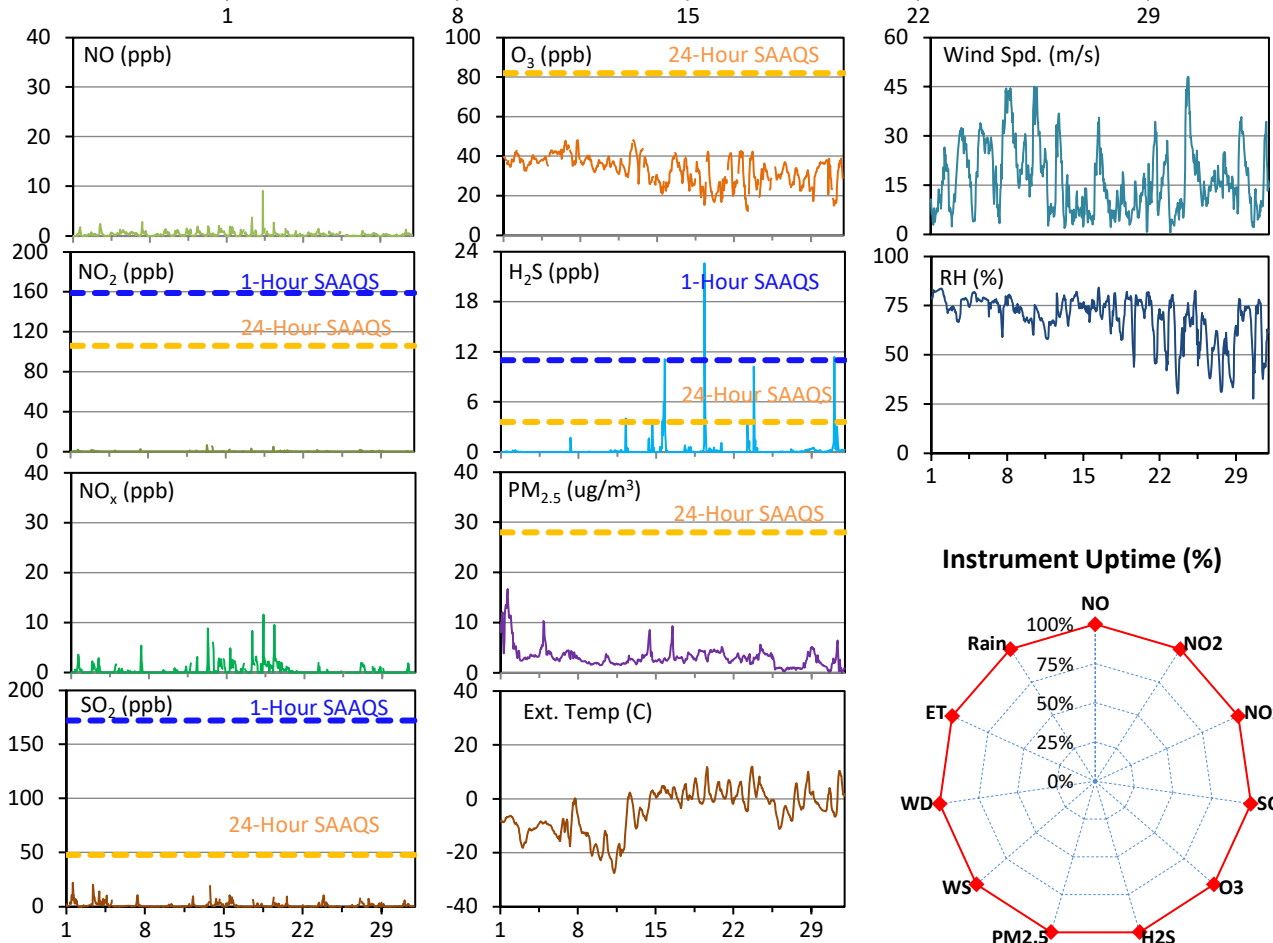
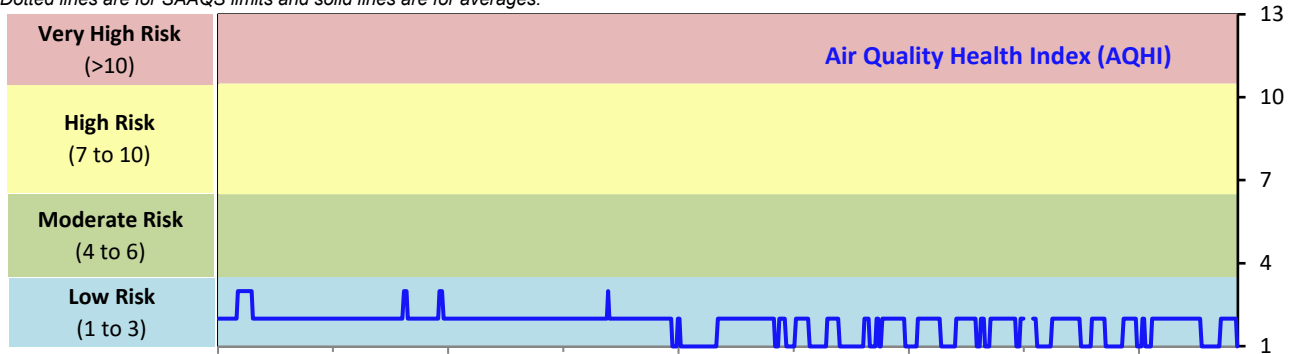
# SESAA Weyburn Station - March 2022 Summary Report

Pollutants		Month Records		24-Hour Records				1-Hour Records			
Name	Conc. Unit	Avg. Conc.	Uptime	Maximum		SAAQS Standard	Exceed Days	Maximum		SAAQS Standard	Exceed Hours
				Conc.	Time			Conc.	Time		
NO	ppb	0.4	100.0%	0.7	Mar-14	-	-	9.1	Mar-18 07:00	-	-
NO <sub>2</sub>	ppb	0.2	100.0%	0.6	Mar-20	106	0	6.9	Mar-13 07:00	159	0
NO <sub>x</sub>	ppb	0.4	100.0%	2.2	Mar-18	-	-	11.6	Mar-18 07:00	-	-
SO <sub>2</sub>	ppb	1.2	100.0%	5.0	Mar-1	48	0	22.2	Mar-01 14:00	172	0
O <sub>3</sub>	ppb	33	100.0%	44	Mar-6	-	-	48	Mar-07 17:00	82	0
H <sub>2</sub> S	ppb	0.2	100.0%	1.7	Mar-19	3.6	0	22.6	Mar-19 08:00	11	3
PM <sub>2.5</sub>	ug/m3	3	100.0%	11	Mar-1	28	0	17	Mar-01 15:00	-	-

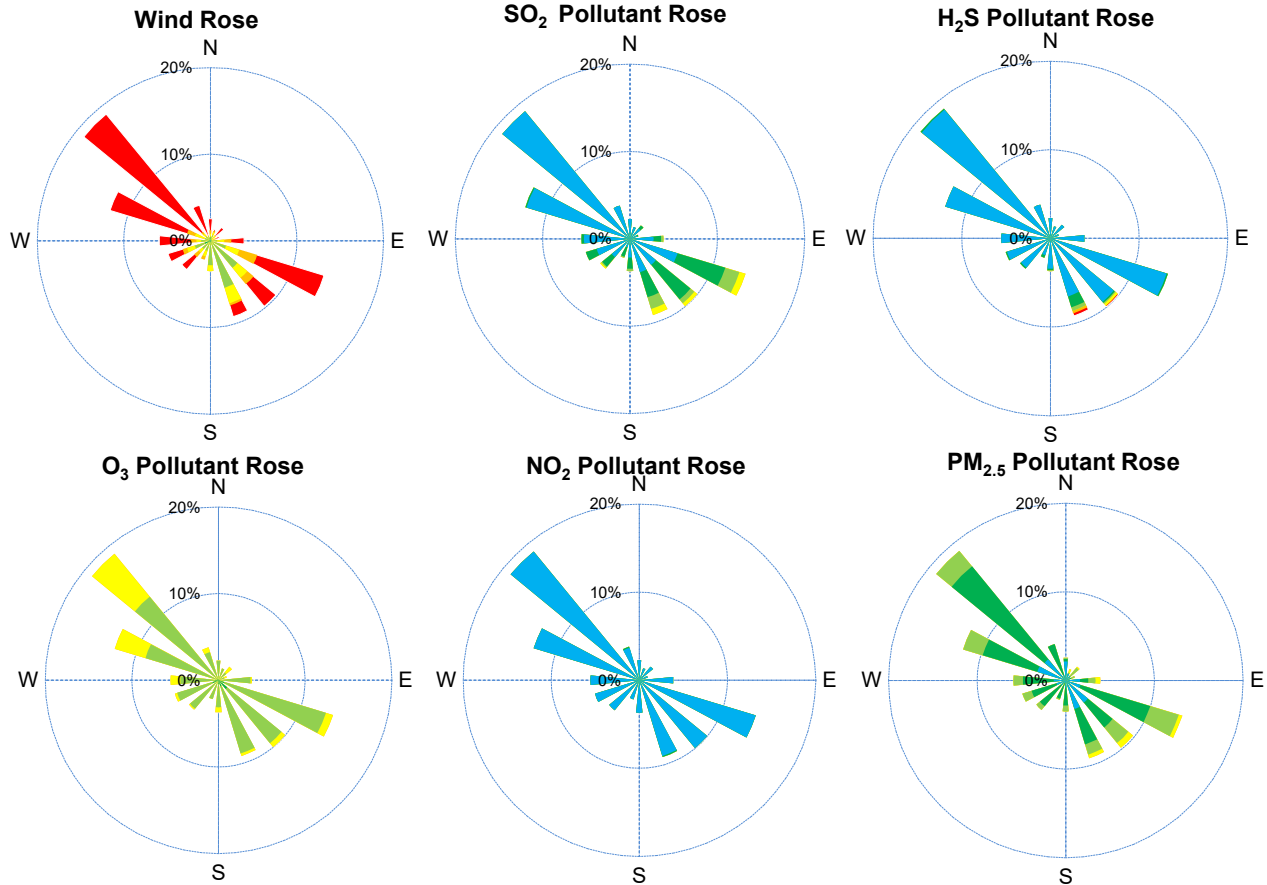
SAAQS: Saskatchewan Ambient Air Quality Standards

\* Air Quality Standard refers to Saskatchewan Ambient Air Quality Standards (SAAQS).

\* Dotted lines are for SAAQS limits and solid lines are for averages.



# SESAA Weyburn Station - March 2022 Summary Report



Parameters	Unit	Color Code for Wind Spd & Pollutant Conc. Class					
Wind Speed	m/s	$0.3 \leq WS < 1.4$	$1.4 \leq WS < 3.1$	$3.1 \leq WS < 7.8$	$7.8 \leq WS < 10.8$	$10.8 \leq WS < 13.6$	$WS \geq 13.6$
SO <sub>2</sub>	ppb	$0 \leq C < 1$	$1 \leq C < 5$	$5 \leq C < 10$	$10 \leq C < 57$	$57 \leq C < 172$	$C \geq 172$
NO <sub>2</sub>	ppb	$0 \leq C < 5$	$5 \leq C < 15$	$15 \leq C < 30$	$30 \leq C < 100$	$100 \leq C < 212$	$C \geq 212$
O <sub>3</sub>	ppb	$0 \leq C < 10$	$10 \leq C < 20$	$20 \leq C < 40$	$40 \leq C < 60$	$60 \leq C < 82$	$C \geq 82$
H <sub>2</sub> S	ppb	$0 \leq C < 1$	$1 \leq C < 3.6$	$3.6 \leq C < 5$	$5 \leq C < 8$	$8 \leq C < 10.8$	$C \geq 10.8$
PM <sub>2.5</sub>	ug/m <sup>3</sup>	$0 \leq C < 2$	$2 \leq C < 4$	$4 \leq C < 10$	$10 \leq C < 20$	$20 \leq C < 30$	$C \geq 30$

## Monthly Update

\*All data has been slope, intercept, and baseline corrected. Data may change after validation process.

\*All compliance parameters were within the Saskatchewan Ambient Air Quality Standards with the exception of three 1-hr HS2 exceedances.

\*All compliance parameters are above 90% operational.

\*Routine quarterly calibrations were completed on March 25.

## Exceedance Summary

1-hour Exceedance Information			Summary of Other Parameters During Exceedance									
Pollutant	Conc. ppb	Exceedance Time mmm-dd hh:mm	WS m/s	WD deg	AQHI -	Rain mm	SO2 ppb	NO2 ppb	O3 ppb	H2S ppb	PM2.5 ug/m3	
H2S	22.6	Mar-19 08:00	4.3	140	1	0.0	2.6	0.0	18	22.6	4	
H2S	11.4	Mar-31 01:00	5.0	162	1	0.0	5.7	0.0	18	11.4	2	
H2S	11.1	Mar-15 18:00	4.5	158	1	0.0	5.9	0.4	23	11.1	3	