

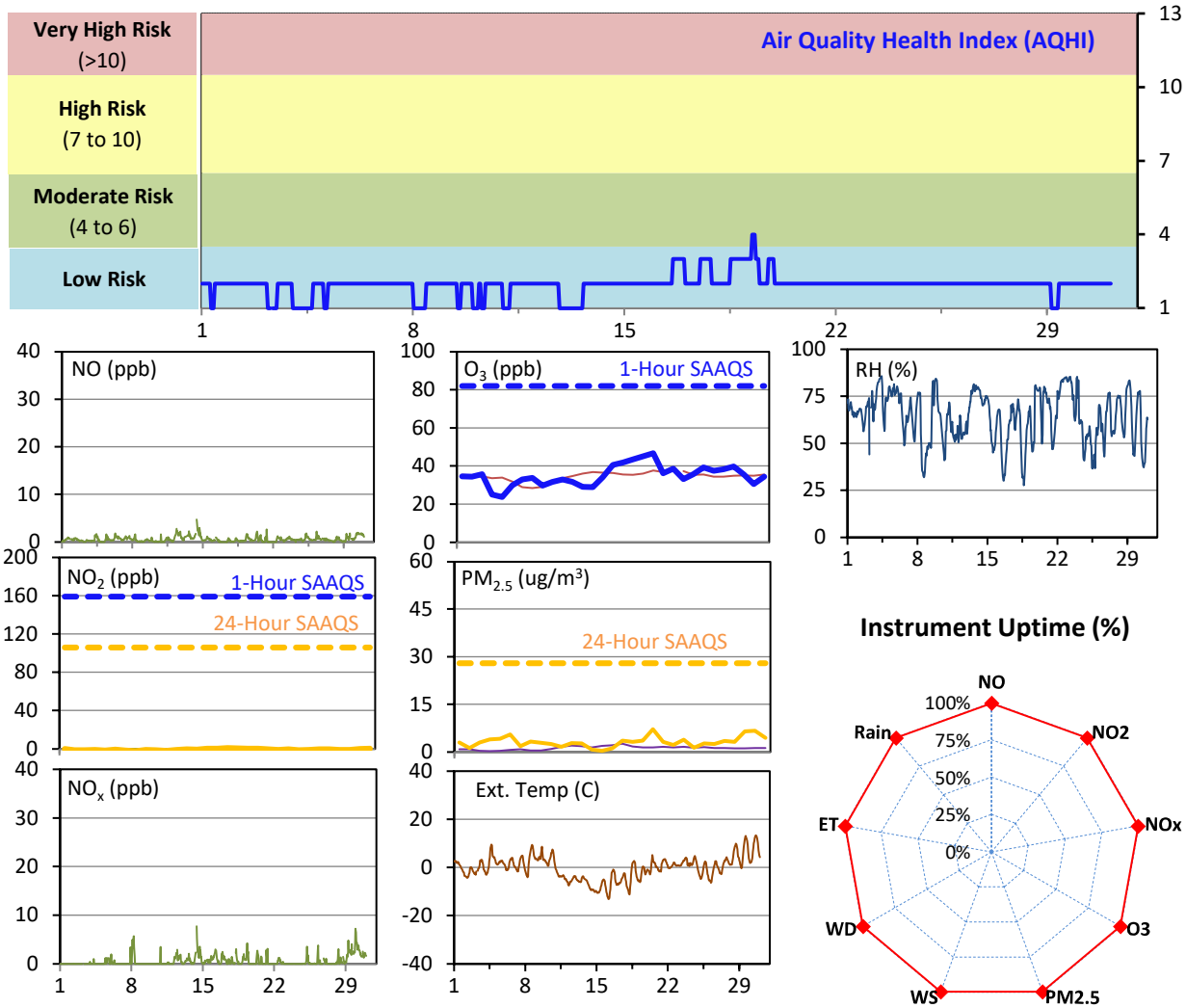
SESAA Esterhazy Station - April 2022 Summary Report

Pollutants		Month Records		24-Hour Records				1-Hour Records			
Name	Conc. Unit	Avg. Conc.	Uptime	Maximum		SAAQS Standard	Exceed Days	Maximum		SAAQS Standard	Exceed Hours
				Conc.	Time			Conc.	Time		
NO	ppb	0.6	99.6%	1.6	Apr-14	-	-	4.7	Apr-14 09:00	-	-
NO ₂	ppb	0.2	99.6%	< 0.1	#N/A	106	0	5.2	Apr-29 23:00	159	0
NO _x	ppb	0.6	99.6%	2.7	Apr-30	-	-	7.8	Apr-14 09:00	-	-
O ₃	ppb	35	99.6%	47	Apr-19	-	-	56	Apr-19 05:00	82	0
PM _{2.5}	ug/m3	3	99.6%	7	Apr-19	28	0	19	Apr-19 03:00	-	-

SAAQS: Saskatchewan Ambient Air Quality Standards

* Air Quality Standard refers to Saskatchewan Ambient Air Quality Standards (SAAQS).

* Dotted lines are for SAAQS limits and solid lines are for averages.



Monthly Update

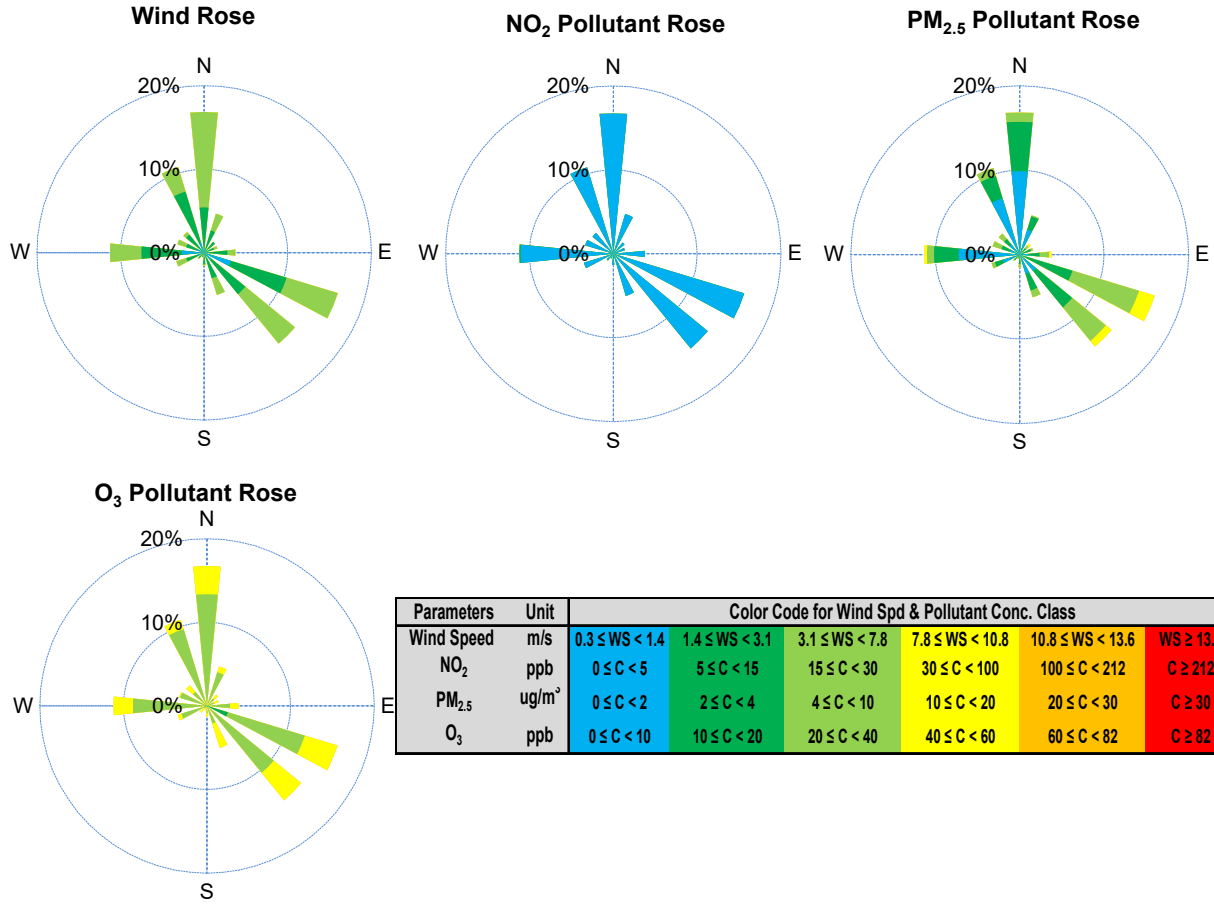
*All data has been slope, intercept, and baseline corrected. Data may change after validation process.

*All compliance parameters were within the Saskatchewan Ambient Air Quality Standards.

*All compliance parameters were greater than 90% operational.

*There is 3 hours of data for all parameters flagged as "power failure" on April 3 due to power issues on site.

SESAA Esterhazy Station - April 2022 Summary Report



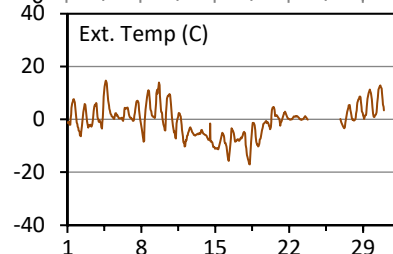
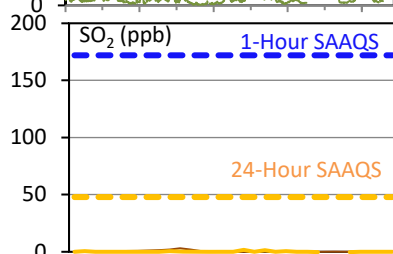
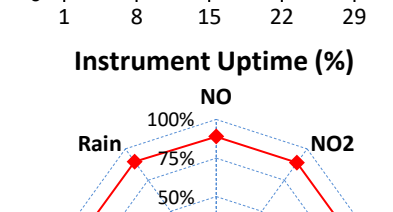
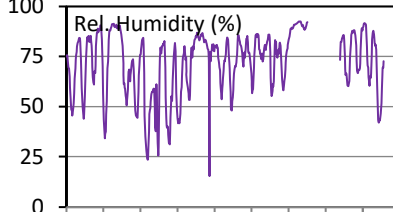
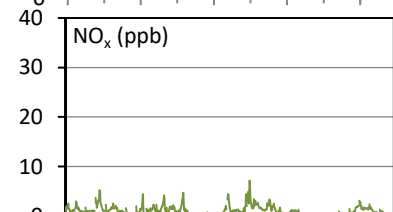
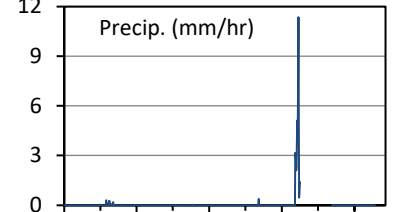
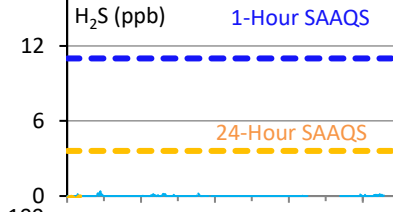
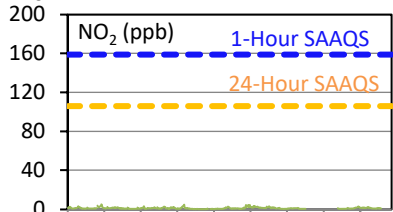
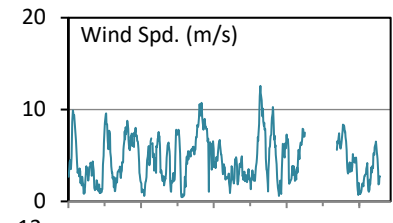
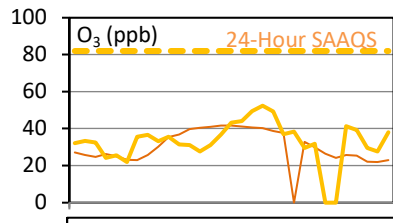
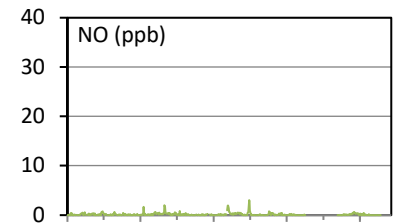
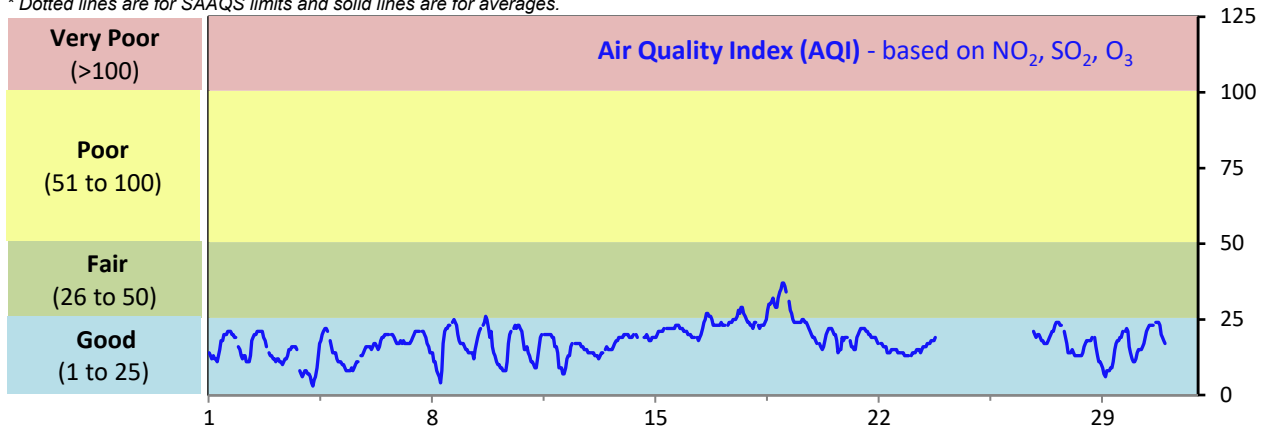
SESAA Glen Ewen Station - April 2022 Summary Report

Pollutants		Month Records		24-Hour Records				1-Hour Records			
Name	Conc. Unit	Avg. Conc.	Uptime	Maximum		SAAQS Standard	Exceed Days	Maximum		SAAQS Standard	Exceed Hours
				Conc.	Time			Conc.	Time		
NO	ppb	0.1	88.9%	0.4	Apr-16	-	-	3.0	Apr-18 09:00	-	-
NO ₂	ppb	1.1	88.9%	2.6	Apr-18	106	0	5.2	Apr-04 05:00	159	0
NO _x	ppb	1.2	88.9%	3.0	Apr-18	-	-	7.2	Apr-18 09:00	-	-
SO ₂	ppb	0.2	88.9%	1.4	Apr-18	48	0	13.5	Apr-16 10:00	172	0
O ₃	ppb	35	88.9%	52	Apr-18	-	-	65	Apr-19 00:00	82	0
H ₂ S	ppb	< 0.1	88.9%	< 0.1	Apr-27	3.6	0	0.4	Apr-04 03:00	11	0

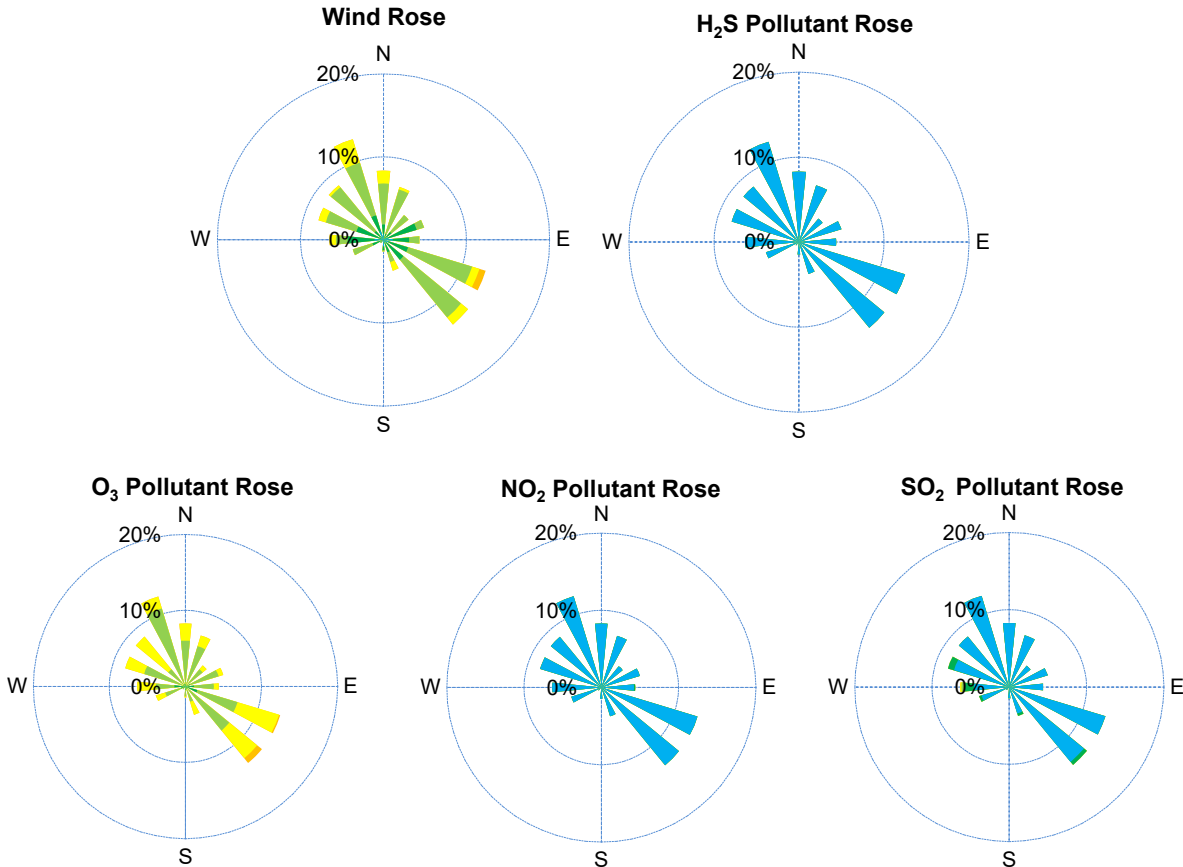
SAAQS: Saskatchewan Ambient Air Quality Standards

* Air Quality Standard refers to Saskatchewan Ambient Air Quality Standards (SAAQS).

* Dotted lines are for SAAQS limits and solid lines are for averages.



SESAA Glen Ewen Station - April 2022 Summary Report



Parameters	Unit	Color Code for Wind Spd & Pollutant Conc. Class						
Wind Speed	m/s	0.3 ≤ WS < 1.4	1.4 ≤ WS < 3.1	3.1 ≤ WS < 7.8	7.8 ≤ WS < 10.8	10.8 ≤ WS < 13.6	WS ≥ 13.6	
SO ₂	ppb	0 ≤ C < 1	1 ≤ C < 5	5 ≤ C < 10	10 ≤ C < 57	57 ≤ C < 172	C ≥ 172	
NO ₂	ppb	0 ≤ C < 5	5 ≤ C < 15	15 ≤ C < 30	30 ≤ C < 100	100 ≤ C < 212	C ≥ 212	
O ₃	ppb	0 ≤ C < 10	10 ≤ C < 20	20 ≤ C < 40	40 ≤ C < 60	60 ≤ C < 82	C ≥ 82	
H ₂ S	ppb	0 ≤ C < 1	1 ≤ C < 3.6	3.6 ≤ C < 5	5 ≤ C < 8	8 ≤ C < 10.8	C ≥ 10.8	

Monthly Update

- *All data has been slope, intercept, and baseline corrected. Data may change after validation process.
- *All compliance parameters were within the Saskatchewan Ambient Air Quality Standards.
- *All compliance parameters were less than 90% operational.
- *77 hours of data for all parameters is flagged as "power failure" due power interruptions on site.

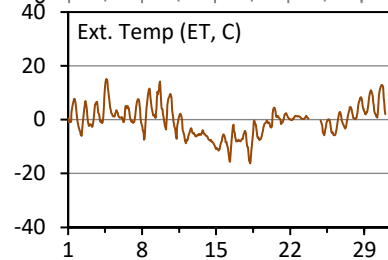
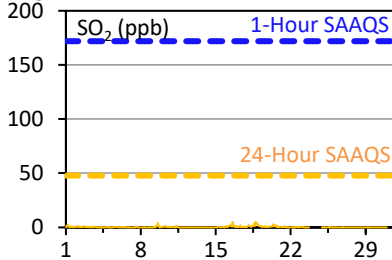
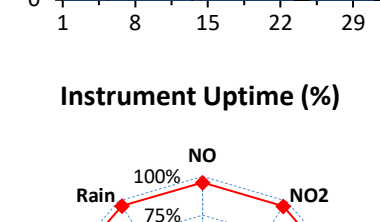
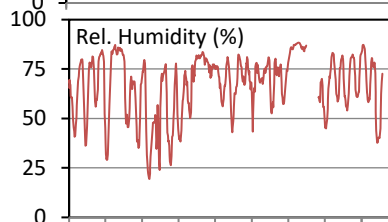
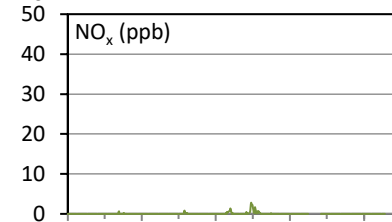
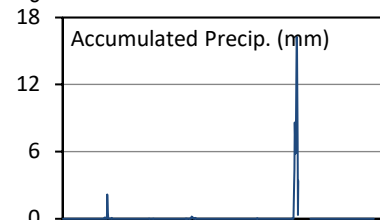
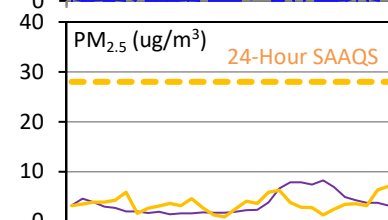
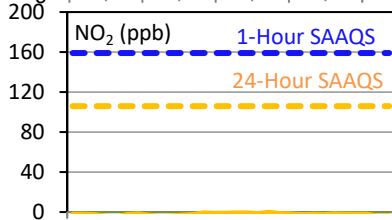
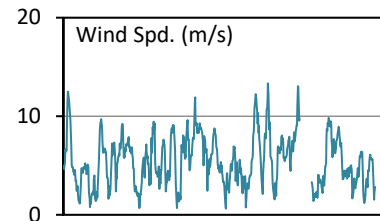
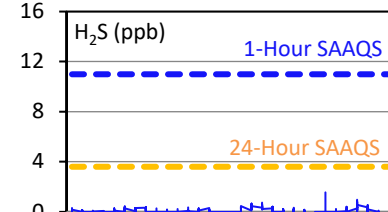
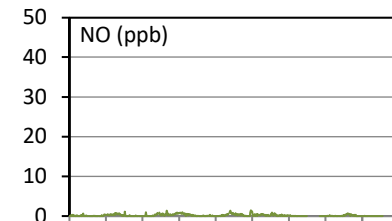
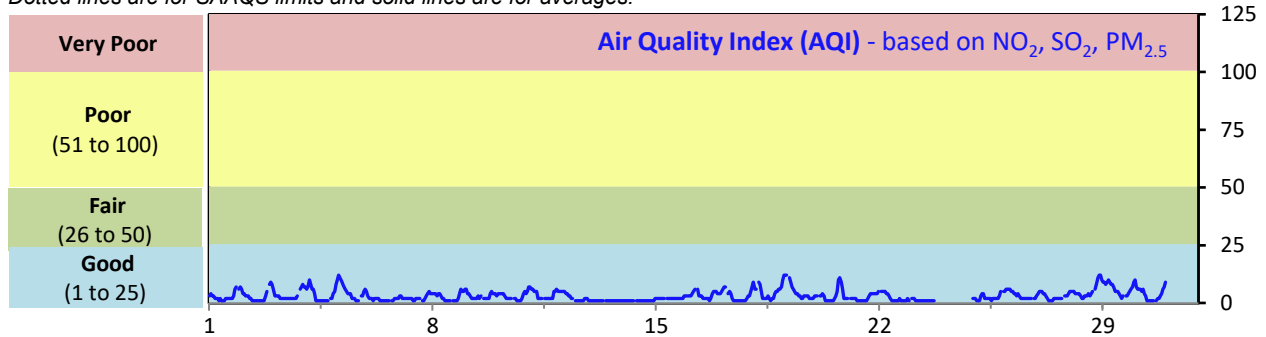
SESAA Oxbow Station - April 2022 Summary Report

Pollutants		Month Records		24-Hour Records				1-Hour Records			
Name	Conc. Unit	Avg. Conc.	Uptime	Maximum		SAAQS Standard	Exceed Days	Maximum		SAAQS Standard	Exceed Hours
				Conc.	Time			Conc.	Time		
NO	ppb	0.2	96.1%	0.6	Mar-06	-	-	1.5	Apr-18 08:00	-	-
NO ₂	ppb	< 0.1	96.1%	0.5	Mar-06	106	0	1.6	Apr-18 07:00	159	0
NO _x	ppb	0.1	96.1%	0.9	Mar-06	-	-	2.9	Apr-18 08:00	-	-
SO ₂	ppb	0.3	96.1%	2.1	Apr-18	48	0	5.2	Apr-18 17:00	172	0
H ₂ S	ppb	0.1	95.9%	0.4	Apr-28	3.6	0	1.6	Apr-25 22:00	11	0
PM _{2.5}	ug/m3	4	96.3%	7	Apr-29	28	0	15	Apr-19 01:00	-	-

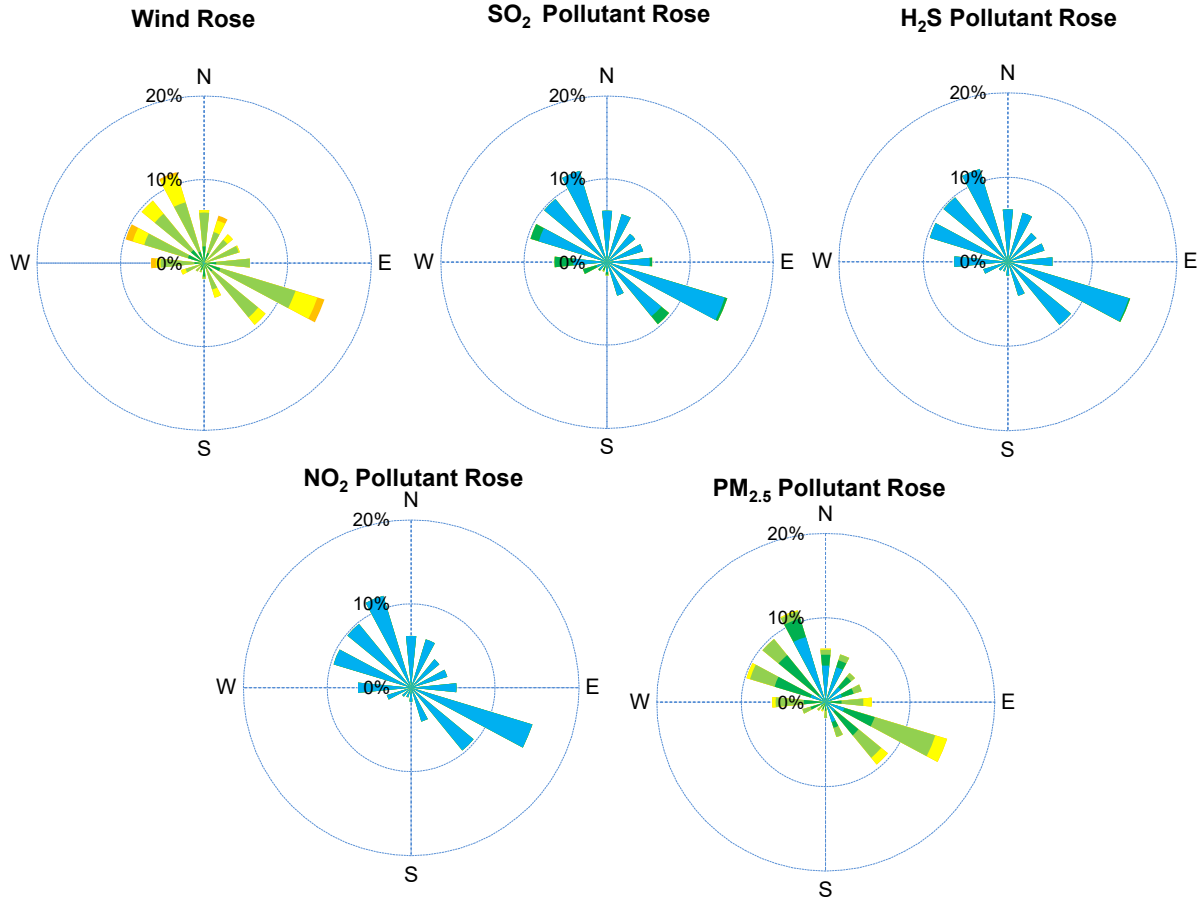
SAAQS: Saskatchewan Ambient Air Quality Standards

* Air Quality Standard refers to Saskatchewan Ambient Air Quality Standards (SAAQS).

* Dotted lines are for SAAQS limits and solid lines are for averages.



SESAA Oxbow Station - April 2022 Summary Report



Parameters	Unit	Color Code for Wind Spd & Pollutant Conc. Class						
Wind Speed	m/s	$0.3 \leq WS < 1.4$	$1.4 \leq WS < 3.1$	$3.1 \leq WS < 7.8$	$7.8 \leq WS < 10.8$	$10.8 \leq WS < 13.6$	$WS \geq 13.6$	
SO ₂	ppb	$0 \leq C < 1$	$1 \leq C < 5$	$5 \leq C < 10$	$10 \leq C < 57$	$57 \leq C < 172$	$C \geq 172$	
NO ₂	ppb	$0 \leq C < 5$	$5 \leq C < 15$	$15 \leq C < 30$	$30 \leq C < 100$	$100 \leq C < 212$	$C \geq 212$	
H ₂ S	ppb	$0 \leq C < 1$	$1 \leq C < 3.6$	$3.6 \leq C < 5$	$5 \leq C < 8$	$8 \leq C < 10.8$	$C \geq 10.8$	
PM _{2.5}	ug/m ³	$0 \leq C < 2$	$2 \leq C < 4$	$4 \leq C < 10$	$10 \leq C < 20$	$20 \leq C < 30$	$C \geq 30$	

Monthly Update

- *All data has been slope, intercept, and baseline corrected. Data may change after validation process.
- *All compliance parameters were within the Saskatchewan Ambient Air Quality Standards.
- *All compliance parameters had greater than 90% operational uptime.
- * 27 hours of data for all parameters flagged as "power failure" due to power issues on site.

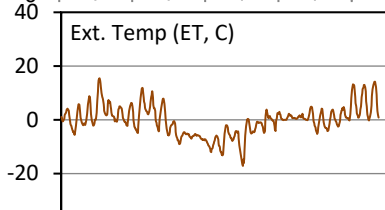
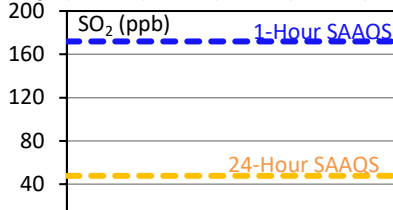
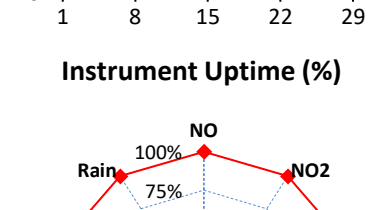
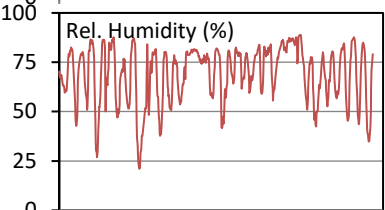
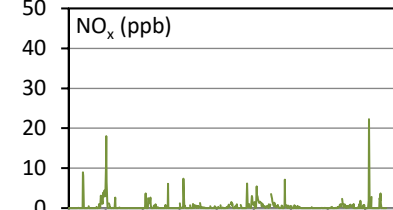
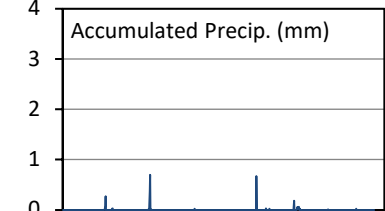
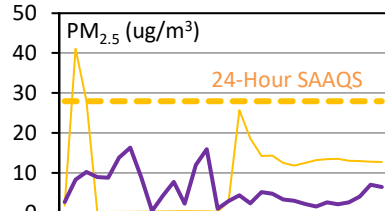
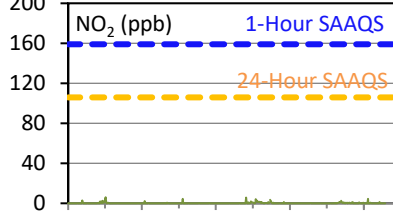
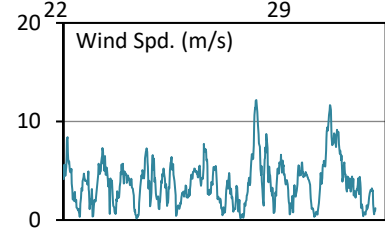
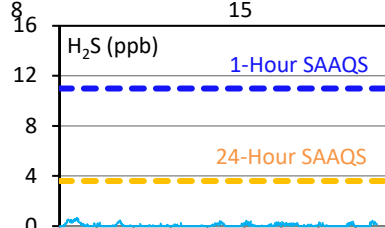
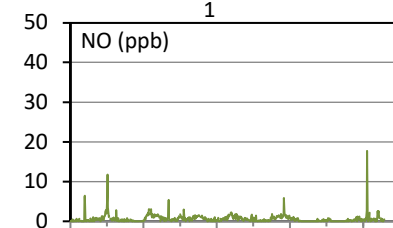
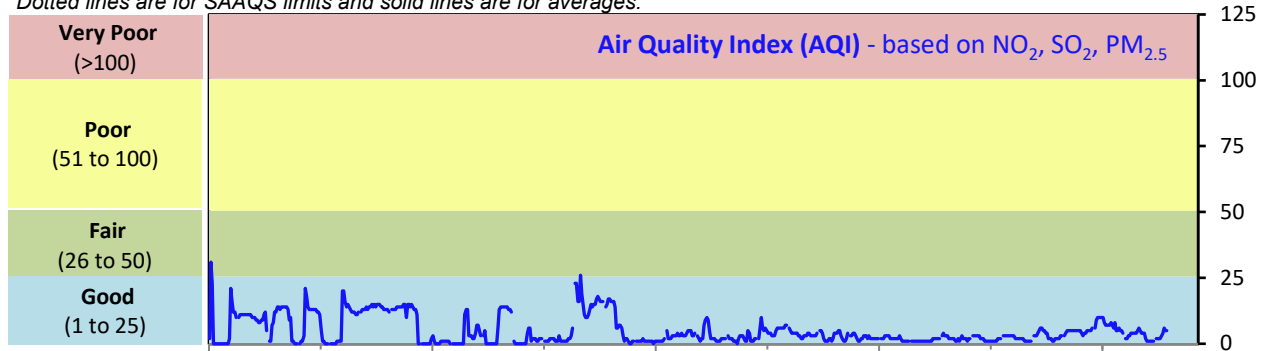
SESAA Stoughton Station - April 2022 Summary Report

Pollutants		Month Records		24-Hour Records				1-Hour Records			
Name	Conc. Unit	Avg. Conc.	Uptime	Maximum		SAAQS	Exceed Days	Maximum		SAAQS	Exceed Hours
				Conc.	Time	Standard		Conc.	Time		
NO	ppb	0.6	100.0%	2.0	Apr-4	-	-	17.8	Apr-29 09:00	-	-
NO ₂	ppb	0.2	100.0%	1.0	Apr-18	106	0	6.3	Apr-04 13:00	159	0
NO _x	ppb	0.5	100.0%	3.0	Apr-4	-	-	22.3	Apr-29 09:00	-	-
SO ₂	ppb	0.2	100.0%	0.9	Apr-28	48	0	2.4	Apr-18 18:00	172	0
H ₂ S	ppb	0.1	100.0%	0.4	Apr-2	3.6	0	0.7	Apr-02 15:00	11	0
PM _{2.5}	ug/m3	6	100.0%	16	Apr-6	28	0	41	Apr-01 01:00	-	-

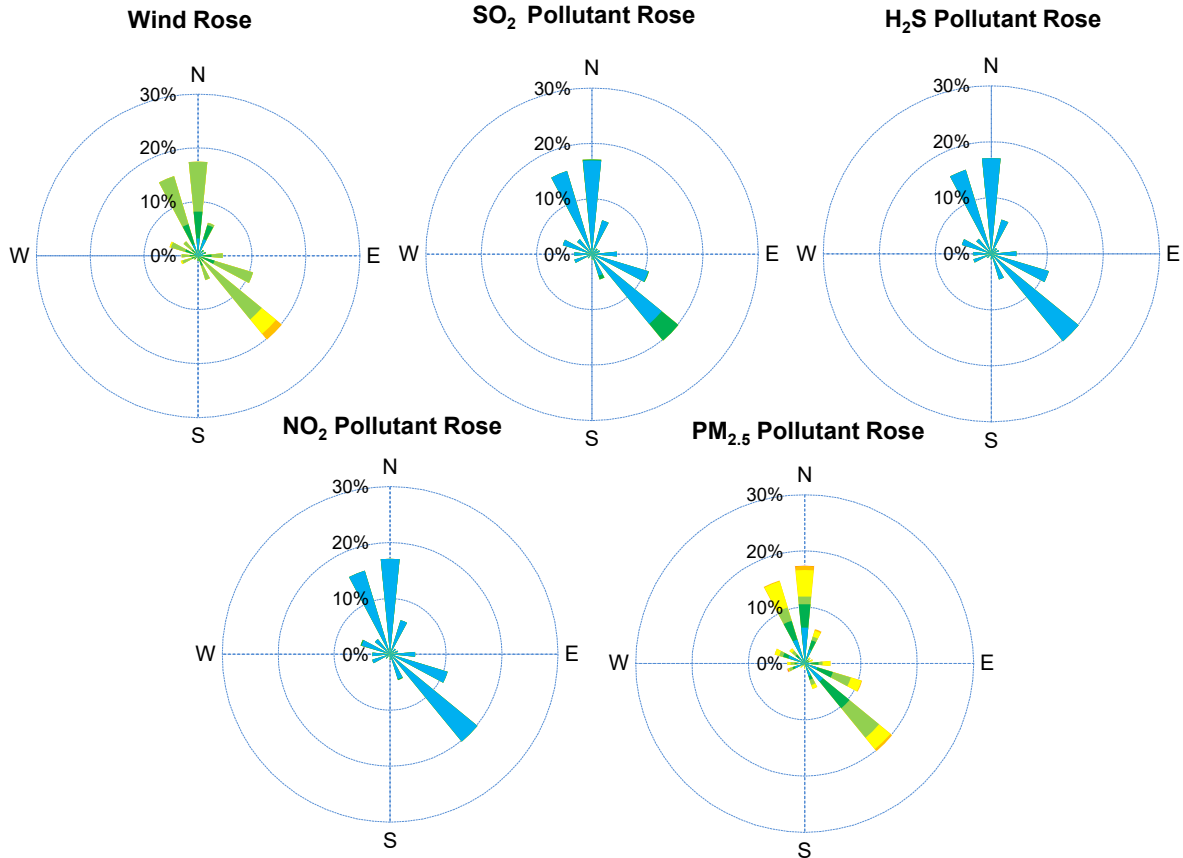
SAAQS: Saskatchewan Ambient Air Quality Standards

* Air Quality Standard refers to Saskatchewan Ambient Air Quality Standards (SAAQS).

* Dotted lines are for SAAQS limits and solid lines are for averages.



SESAA Stoughton Station - April 2022 Summary Report



Parameters	Unit	Color Code for Wind Spd & Pollutant Conc. Class					
Wind Speed	m/s	0.3 ≤ WS < 1.4	1.4 ≤ WS < 3.1	3.1 ≤ WS < 7.8	7.8 ≤ WS < 10.8	10.8 ≤ WS < 13.6	WS ≥ 13.6
SO ₂	ppb	0 ≤ C < 1	1 ≤ C < 5	5 ≤ C < 10	10 ≤ C < 57	57 ≤ C < 172	C ≥ 172
NO ₂	ppb	0 ≤ C < 5	5 ≤ C < 15	15 ≤ C < 30	30 ≤ C < 100	100 ≤ C < 212	C ≥ 212
H ₂ S	ppb	0 ≤ C < 1	1 ≤ C < 3.6	3.6 ≤ C < 5	5 ≤ C < 8	8 ≤ C < 10.8	C ≥ 10.8
PM _{2.5}	ug/m ³	0 ≤ C < 2	2 ≤ C < 4	4 ≤ C < 10	10 ≤ C < 20	20 ≤ C < 30	C ≥ 30

Monthly Update

*All data has been slope, intercept, and baseline corrected. Data may change after validation process.

*All compliance parameters were within the Saskatchewan Ambient Air Quality Standards.

*All compliance parameters had greater than 90% operational uptime.

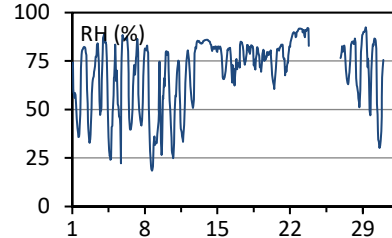
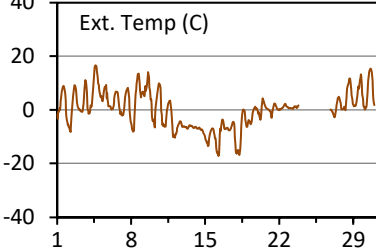
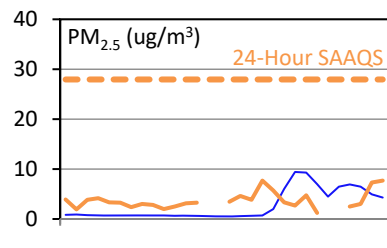
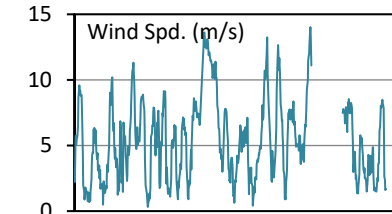
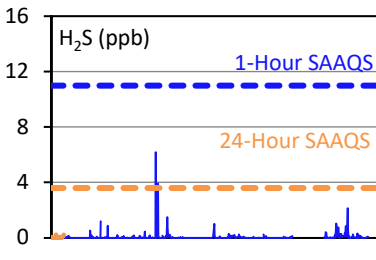
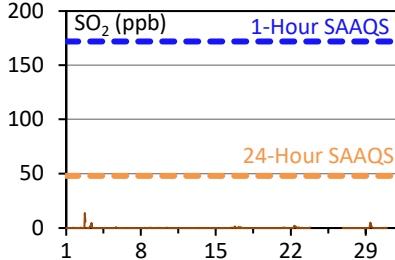
SESAA Torquay Station - April 2022 Summary Report

Pollutants		Month Records		24-Hour Records				1-Hour Records			
Name	Conc. Unit	Avg. Conc.	Uptime	Maximum		SAAQS Standard	Exceed Days	Maximum		SAAQS Standard	Exceed Hours
				Conc.	Time			Conc.	Time		
SO ₂	ppb	0.1	89.6%	<0.1	Feb-08	48	0	13.8	Apr-02 18:00	172	0
H ₂ S	ppb	0.1	89.6%	0.3	Apr-28	3.6	0	13.9	Apr-10 21:00	11	0
PM _{2.5}	ug/m3	4	87.4%	8	Apr-18	28	0	17	Apr-28 21:00	-	-

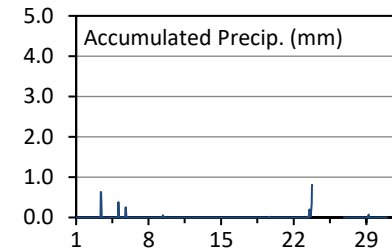
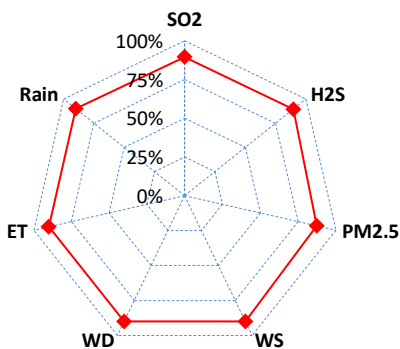
SAAQS: Saskatchewan Ambient Air Quality Standards

* Air Quality Standard refers to Saskatchewan Ambient Air Quality Standards (SAAQS).

* Dotted lines are for SAAQS limits and solid lines are for averages.



Instrument Uptime (%)



Monthly Update

*All data has been slope, intercept, and baseline corrected. Data may change after validation process.

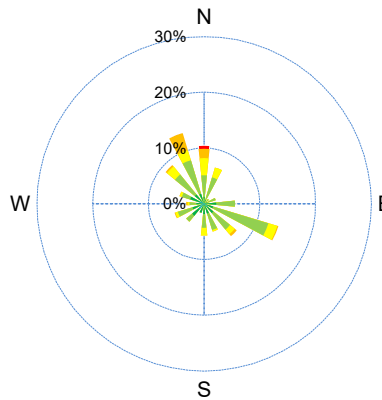
*All compliance parameters were within the Saskatchewan Ambient Air Quality Standards.

*All compliance parameters were less than 90% operational.

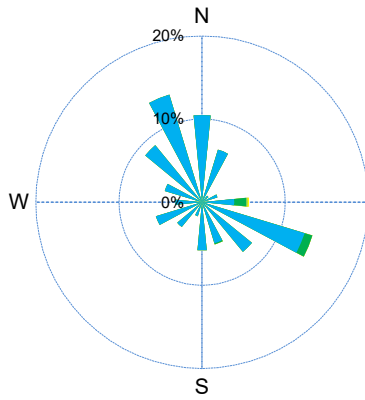
* 72 hours of data flagged as "power failure" for all parameters due to power issues on site.

SESAA Torquay Station - April 2022 Summary Report

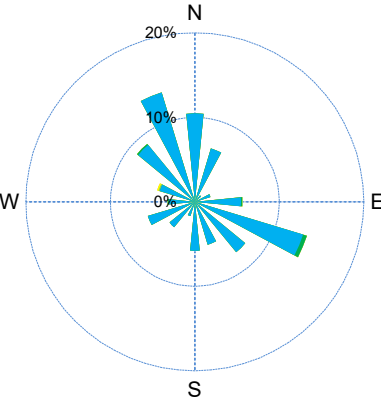
Wind Rose



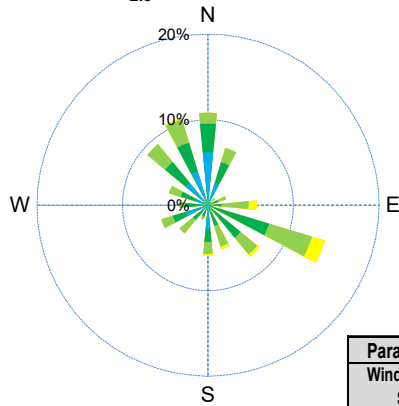
SO₂ Pollutant Rose



H₂S Pollutant Rose



PM_{2.5} Pollutant Rose



Parameters	Unit	Color Code for Wind Spd & Pollutant Conc. Class						
		0.3 ≤ WS < 1.4	1.4 ≤ WS < 3.1	3.1 ≤ WS < 7.8	7.8 ≤ WS < 10.8	10.8 ≤ WS < 13.6	WS ≥ 13.6	
Wind Speed	m/s	0 ≤ C < 1	1 ≤ C < 5	5 ≤ C < 10	10 ≤ C < 57	57 ≤ C < 172	C ≥ 172	
SO ₂	ppb	0 ≤ C < 5	5 ≤ C < 15	15 ≤ C < 30	30 ≤ C < 100	100 ≤ C < 212	C ≥ 212	
NO ₂	ppb	0 ≤ C < 10	10 ≤ C < 20	20 ≤ C < 40	40 ≤ C < 60	60 ≤ C < 82	C ≥ 82	
O ₃	ppb	0 ≤ C < 1	1 ≤ C < 3.6	3.6 ≤ C < 5	5 ≤ C < 8	8 ≤ C < 10.8	C ≥ 10.8	
H ₂ S	ppb	0 ≤ C < 2	2 ≤ C < 4	4 ≤ C < 10	10 ≤ C < 20	20 ≤ C < 30	C ≥ 30	
PM _{2.5}	ug/m ³							

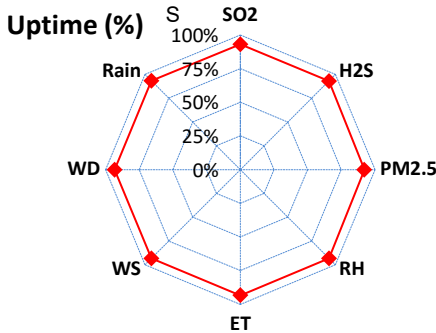
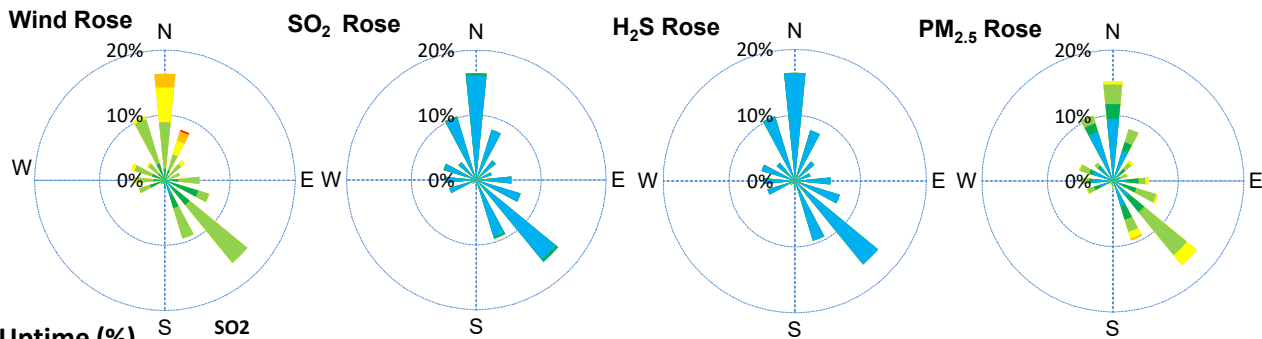
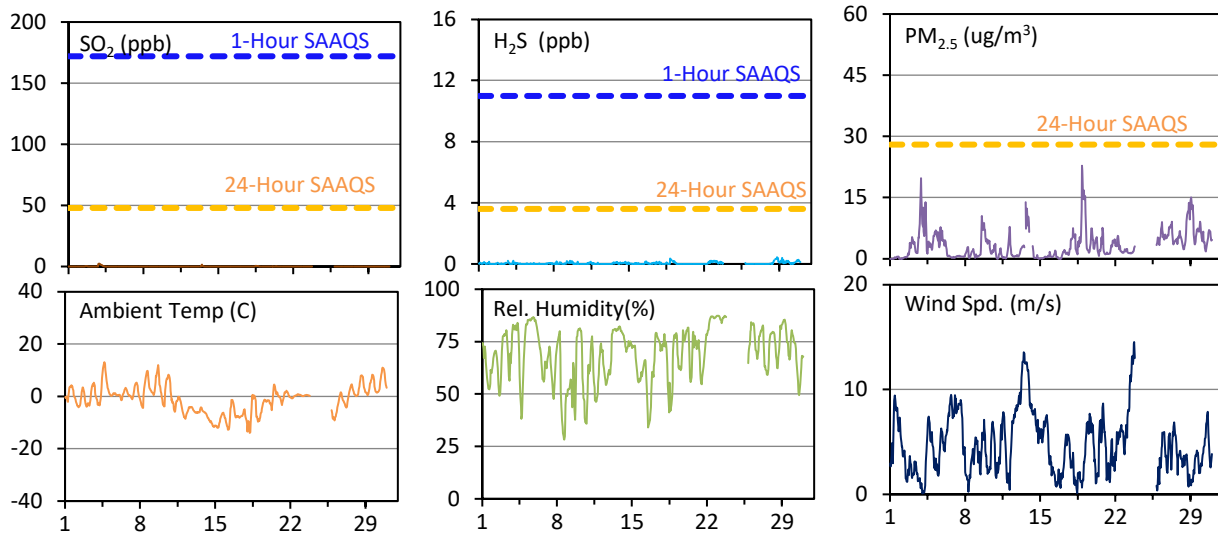
SESAA Wauchope Station - April 2022 Summary Report

Pollutants		Month Records		24-Hour Records				1-Hour Records			
Name	Conc. Unit	Avg. Conc.	Uptime	Maximum		SAAQS Objective	Exceed Days	Maximum		SAAQS Objective	Exceed Hours
				Conc.	Time			Conc.	Time		
SO ₂	ppb	< 0.1	93.1%	< 0.1	Mar-29	48	0	2.5	Apr-03 20:00	172	0
H ₂ S	ppb	< 0.1	93.1%	0.1	Mar-20	3.6	0	0.4	Apr-28 19:00	11	0
PM _{2.5}	ug/m ³	3	92.1%	8	Apr-29	28	0	23	Apr-18 21:00	-	-

SAAQS: Saskatchewan Ambient Air Quality Standards

* Air Quality Standard refers to Saskatchewan Ambient Air Quality Standards (SAAQS).

* Dotted lines are for SAAQS limits and solid lines are for averages.



Parameters	Unit	Color Code for Wind Spd & Pollutant Conc. Class					
Wind Speed	m/s	0.3 ≤ WS < 1.4	1.4 ≤ WS < 3.1	3.1 ≤ WS < 7.8	7.8 ≤ WS < 10.8	10.8 ≤ WS < 13.6	WS ≥ 13.6
SO ₂	ppb	0 ≤ C < 1	1 ≤ C < 5	5 ≤ C < 10	10 ≤ C < 57	57 ≤ C < 172	C ≥ 172
H ₂ S	ppb	0 ≤ C < 1	1 ≤ C < 3.6	3.6 ≤ C < 5	5 ≤ C < 8	8 ≤ C < 10.8	C ≥ 10.8
PM _{2.5}	ug/m ³	0 ≤ C < 2	2 ≤ C < 4	4 ≤ C < 10	10 ≤ C < 20	20 ≤ C < 30	C ≥ 30

Monthly Update

*All data has been slope, intercept, and baseline corrected. Data may change after validation process.

*All compliance parameters were within the Saskatchewan Ambient Air Quality Standards.

*48 hours of data for all parameters is flagged as "power failure" due to power issues on site.

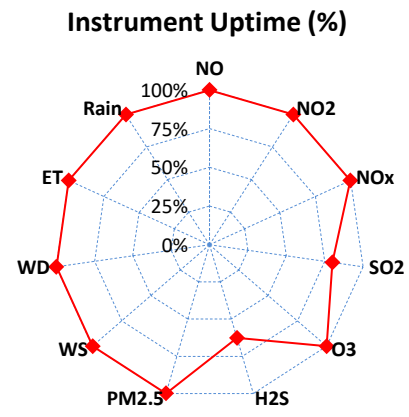
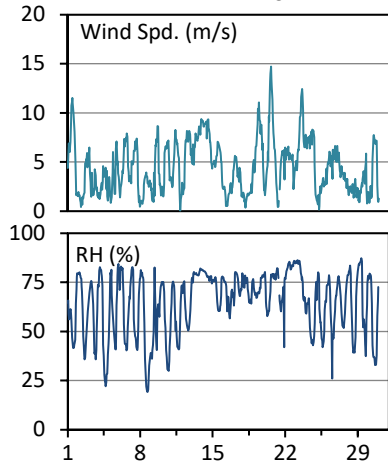
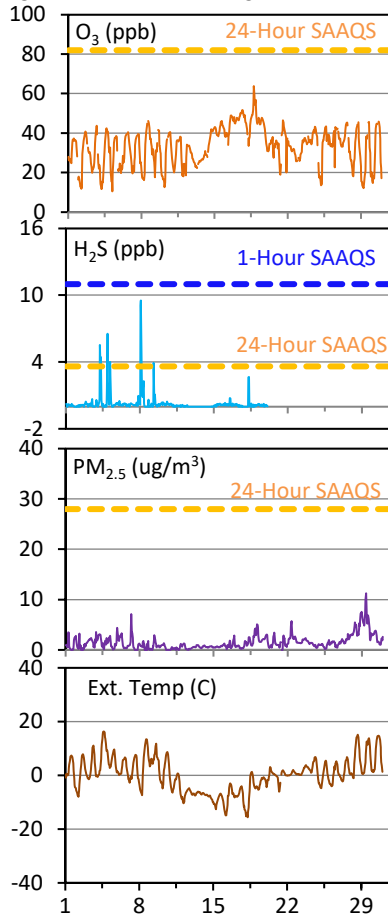
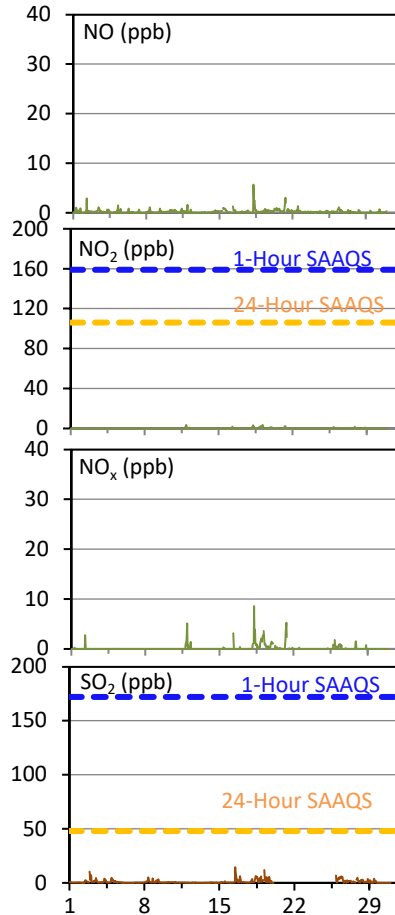
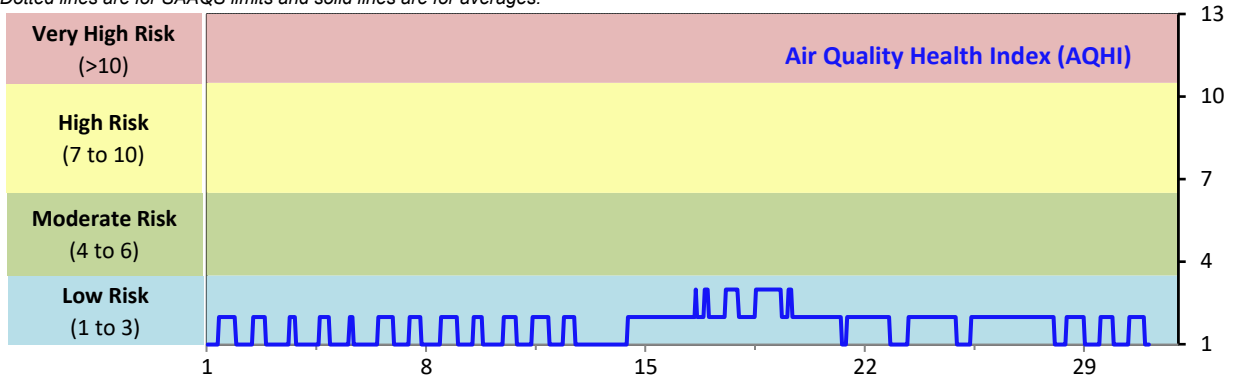
SESAA Weyburn Station - April 2022 Summary Report

Pollutants		Month Records		24-Hour Records				1-Hour Records			
Name	Conc. Unit	Avg. Conc.	Uptime	Maximum		SAAQS Standard	Exceed Days	Maximum		SAAQS Standard	Exceed Hours
				Conc.	Time			Conc.	Time		
NO	ppb	0.2	99.9%	0.6	Apr-21	-	-	5.7	Apr-18 06:00	-	-
NO ₂	ppb	0.1	99.9%	0.3	Apr-21	106	0	3.5	Apr-11 22:00	159	0
NO _x	ppb	0.1	99.9%	0.9	Apr-19	-	-	8.6	Apr-18 06:00	-	-
SO ₂	ppb	0.9	80.1%	2.9	Apr-26	48	0	14.6	Apr-16 11:00	172	0
O ₃	ppb	33	99.9%	48	Apr-17	-	-	64	Apr-18 18:00	82	0
H ₂ S	ppb	0.3	62.7%	1.1	Apr-4	3.6	0	9.5	Apr-08 02:00	11	0
PM _{2.5}	ug/m3	1	99.9%	6	Apr-29	28	0	11	Apr-29 09:00	-	-

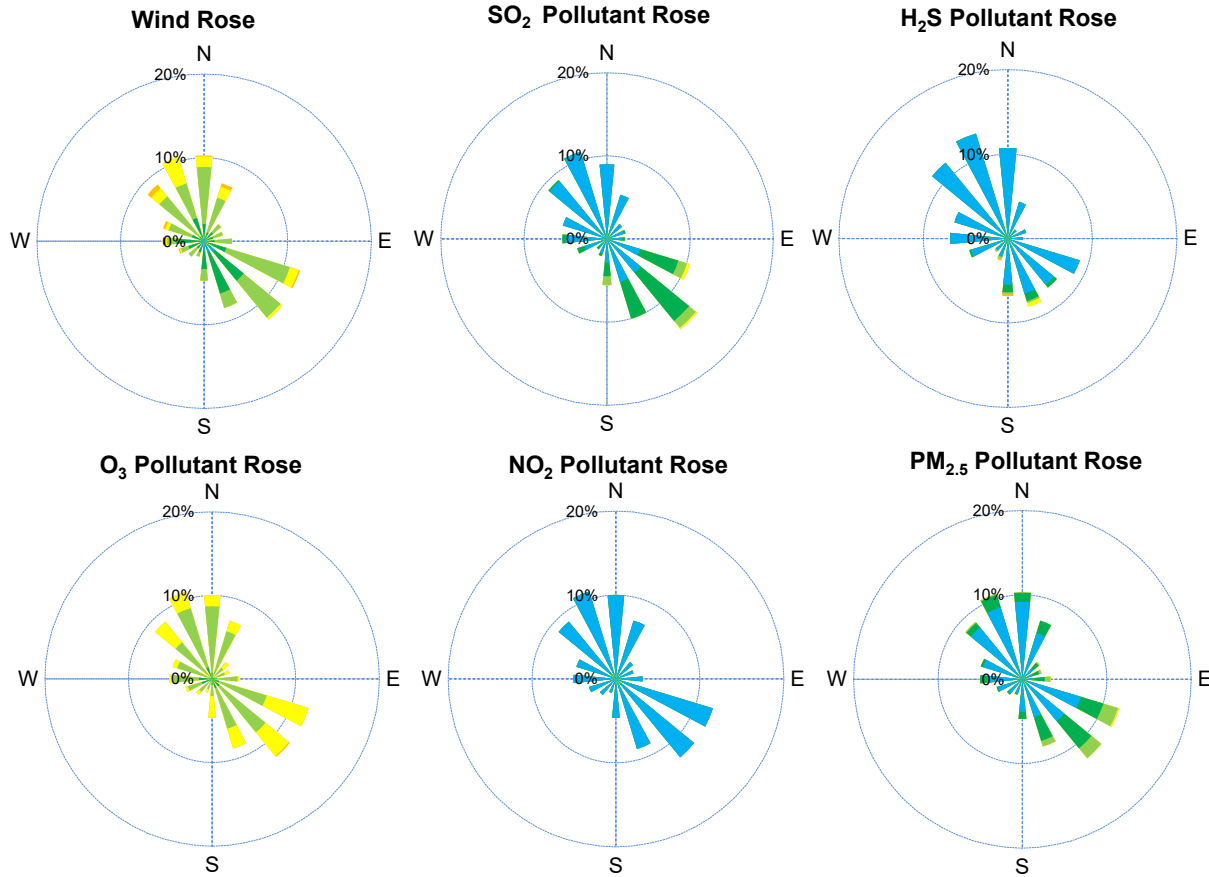
SAAQS: Saskatchewan Ambient Air Quality Standards

* Air Quality Standard refers to Saskatchewan Ambient Air Quality Standards (SAAQS).

* Dotted lines are for SAAQS limits and solid lines are for averages.



SESAA Weyburn Station - April 2022 Summary Report



Parameters	Unit	Color Code for Wind Spd & Pollutant Conc. Class						
Wind Speed	m/s	0.3 ≤ WS < 1.4	1.4 ≤ WS < 3.1	3.1 ≤ WS < 7.8	7.8 ≤ WS < 10.8	10.8 ≤ WS < 13.6	WS ≥ 13.6	
SO ₂	ppb	0 ≤ C < 1	1 ≤ C < 5	5 ≤ C < 10	10 ≤ C < 57	57 ≤ C < 172	C ≥ 172	
NO ₂	ppb	0 ≤ C < 5	5 ≤ C < 15	15 ≤ C < 30	30 ≤ C < 100	100 ≤ C < 212	C ≥ 212	
O ₃	ppb	0 ≤ C < 10	10 ≤ C < 20	20 ≤ C < 40	40 ≤ C < 60	60 ≤ C < 82	C ≥ 82	
H ₂ S	ppb	0 ≤ C < 1	1 ≤ C < 3.6	3.6 ≤ C < 5	5 ≤ C < 8	8 ≤ C < 10.8	C ≥ 10.8	
PM _{2.5}	ug/m ³	0 ≤ C < 2	2 ≤ C < 4	4 ≤ C < 10	10 ≤ C < 20	20 ≤ C < 30	C ≥ 30	

Monthly Update

*All data has been slope, intercept, and baseline corrected. Data may change after validation process.

*All compliance parameters were within the Saskatchewan Ambient Air Quality Standards.

*All compliance parameters are above 90% operational with the exception of H₂S and SO₂.

*138 hours of data for SO₂ and 261 hours for H₂S is flagged as "analyzer failure" due to pump and power issues on site.