

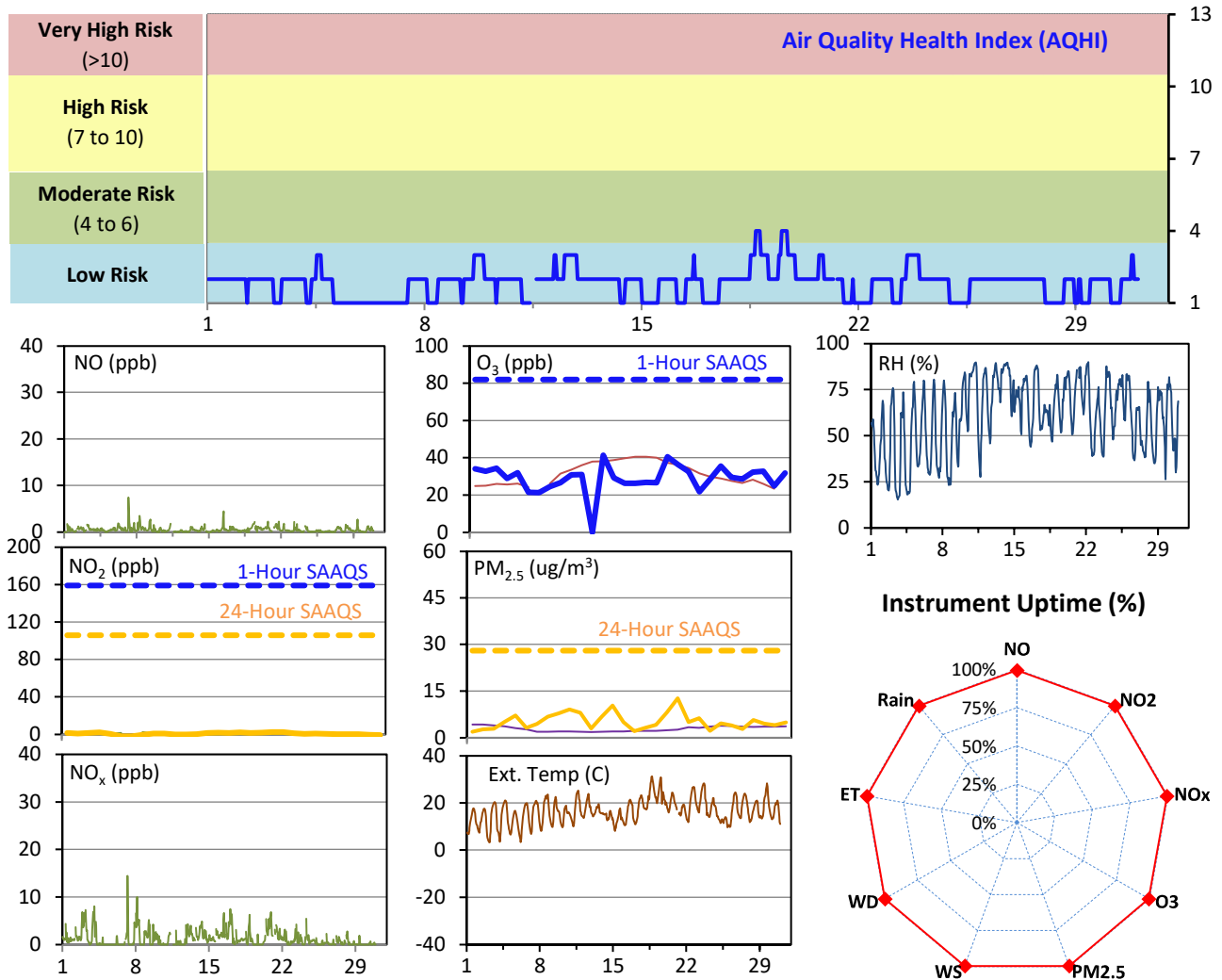
SESAA Esterhazy Station - June 2022 Summary Report

Pollutants		Month Records		24-Hour Records				1-Hour Records			
Name	Conc. Unit	Avg. Conc.	Uptime	Maximum		SAAQS Standard	Exceed Days	Maximum		SAAQS Standard	Exceed Hours
				Conc.	Time			Conc.	Time		
NO	ppb	0.5	99.4%	1.1	Jun-7	-	-	7.4	Jun-07 05:00	-	-
NO ₂	ppb	1.0	99.4%	2.6	Jun-19	106	0	7.9	Jun-08 03:00	159	0
NO _x	ppb	1.2	99.4%	2.7	Jun-3	-	-	14.5	Jun-07 05:00	-	-
O ₃	ppb	30	99.4%	41	Jun-12	-	-	64	Jun-19 13:00	82	0
PM _{2.5}	ug/m3	5	99.4%	13	Jun-19	28	0	29	Jun-12 04:00	-	-

SAAQS: Saskatchewan Ambient Air Quality Standards

* Air Quality Standard refers to Saskatchewan Ambient Air Quality Standards (SAAQS).

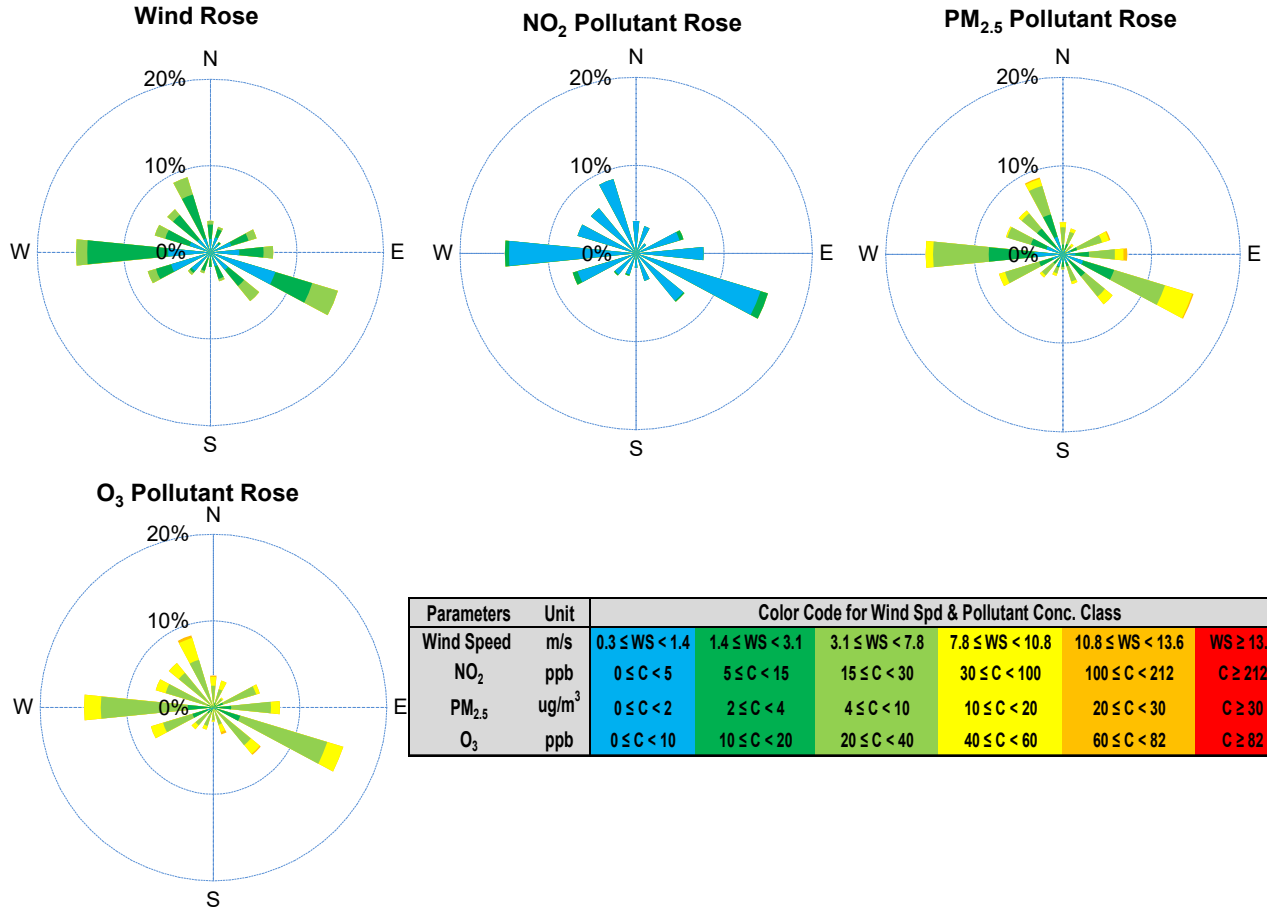
* Dotted lines are for SAAQS limits and solid lines are for averages.



Monthly Update

- *All data has been slope, intercept, and baseline corrected. Data may change after validation process.
- *All compliance parameters were within the Saskatchewan Ambient Air Quality Standards.
- *All compliance parameters were greater than 90% operational.
- *There is 6 hours of data for all parameters flagged as "power failure" due to power issues on site.
- *Routine quarterly calibrations were completed on June 11.

SESAA Esterhazy Station - June 2022 Summary Report



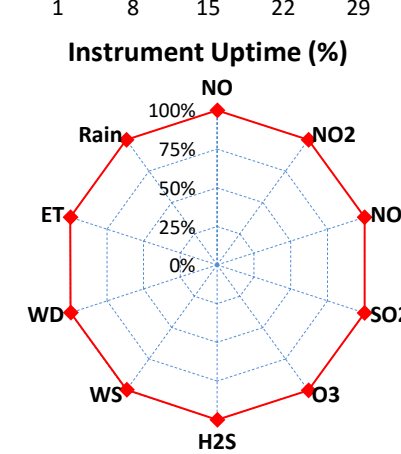
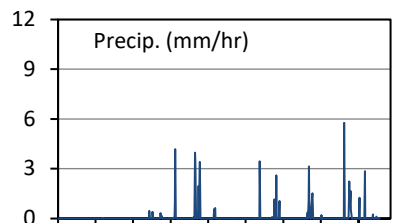
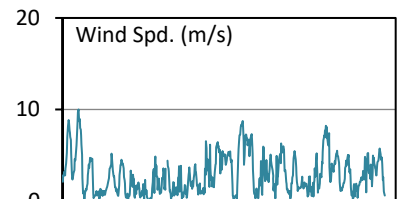
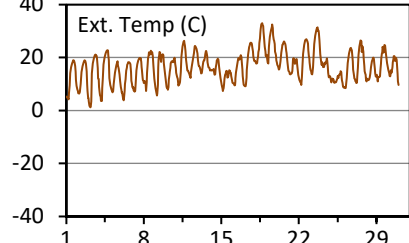
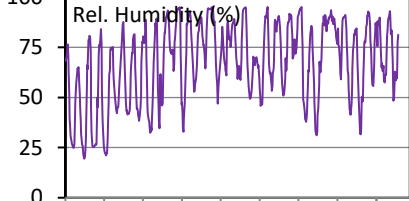
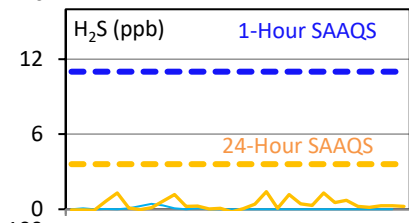
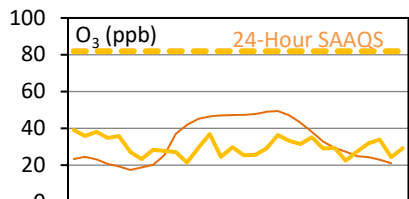
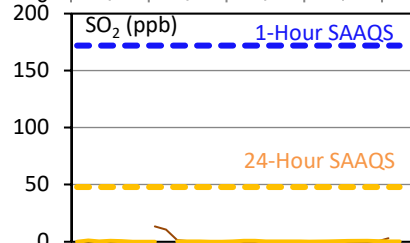
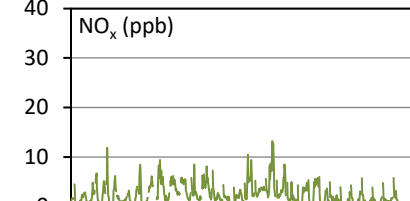
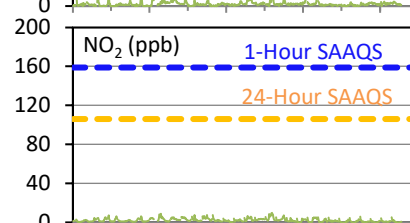
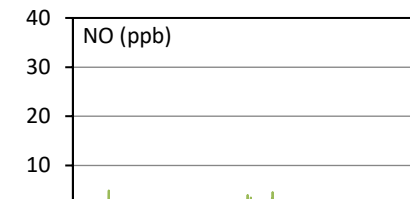
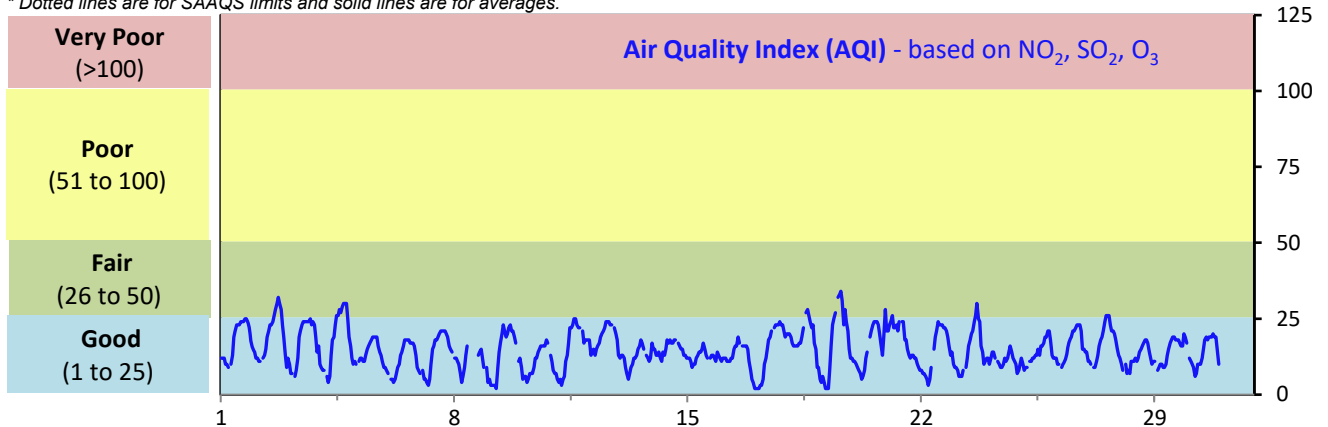
SESAA Glen Ewen Station - June 2022 Summary Report

Pollutants		Month Records		24-Hour Records				1-Hour Records			
Name	Conc. Unit	Avg. Conc.	Uptime	Maximum		SAAQS Standard	Exceed Days	Maximum		SAAQS Standard	Exceed Hours
				Conc.	Time			Conc.	Time		
NO	ppb	0.4	100.0%	0.9	Jun-19	-	-	5.0	Jun-04 06:00	-	-
NO ₂	ppb	2.0	100.0%	4.0	Jun-19	106	0	9.9	Jun-19 03:00	159	0
NO _x	ppb	2.4	100.0%	4.9	Jun-19	-	-	13.2	Jun-19 03:00	-	-
SO ₂	ppb	0.3	100.0%	0.8	Jun-25	48	0	13.4	Jun-01 07:00	172	0
O ₃	ppb	30	100.0%	38	Jun-2	-	-	61	Jun-19 14:00	82	0
H ₂ S	ppb	0.4	100.0%	1.3	Jun-4	3.6	0	10.3	Jun-22 05:00	11	0

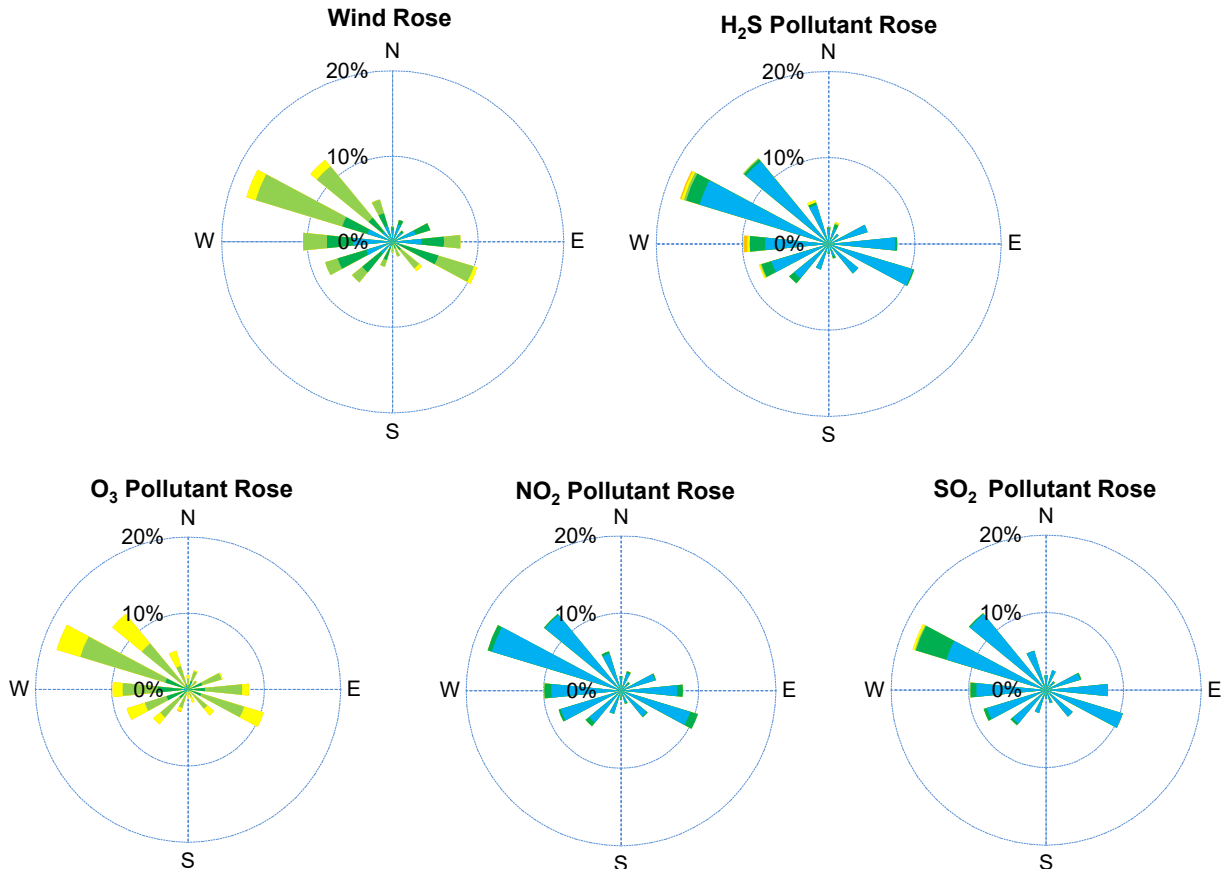
SAAQS: Saskatchewan Ambient Air Quality Standards

* Air Quality Standard refers to Saskatchewan Ambient Air Quality Standards (SAAQS).

* Dotted lines are for SAAQS limits and solid lines are for averages.



SESAA Glen Ewen Station - June 2022 Summary Report



Parameters	Unit	Color Code for Wind Spd & Pollutant Conc. Class						
Wind Speed	m/s	0.3 ≤ WS < 1.4	1.4 ≤ WS < 3.1	3.1 ≤ WS < 7.8	7.8 ≤ WS < 10.8	10.8 ≤ WS < 13.6	WS ≥ 13.6	
SO ₂	ppb	0 ≤ C < 1	1 ≤ C < 5	5 ≤ C < 10	10 ≤ C < 57	57 ≤ C < 172	C ≥ 172	
NO ₂	ppb	0 ≤ C < 5	5 ≤ C < 15	15 ≤ C < 30	30 ≤ C < 100	100 ≤ C < 212	C ≥ 212	
O ₃	ppb	0 ≤ C < 10	10 ≤ C < 20	20 ≤ C < 40	40 ≤ C < 60	60 ≤ C < 82	C ≥ 82	
H ₂ S	ppb	0 ≤ C < 1	1 ≤ C < 3.6	3.6 ≤ C < 5	5 ≤ C < 8	8 ≤ C < 10.8	C ≥ 10.8	

Monthly Update

*All data has been slope, intercept, and baseline corrected. Data may change after validation process.

*All compliance parameters were within the Saskatchewan Ambient Air Quality Standards.

*All compliance parameters were greater than 90% operational.

*3 hours of data for WS/WD was flagged as "power failure" due power interruptions on site.

*Routine quarterly calibrations were completed on June 8.

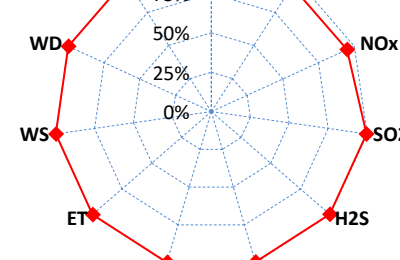
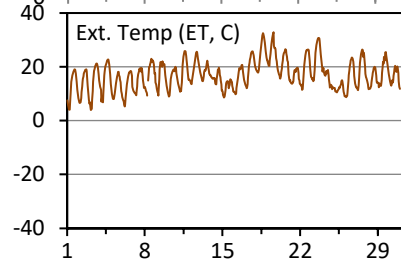
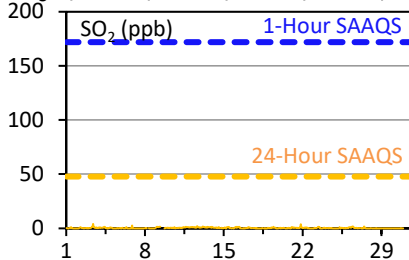
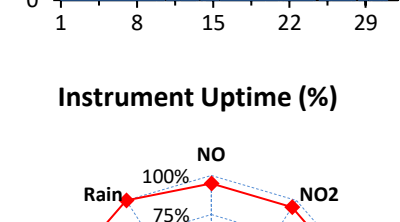
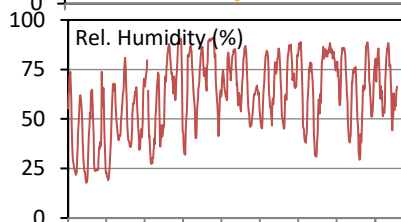
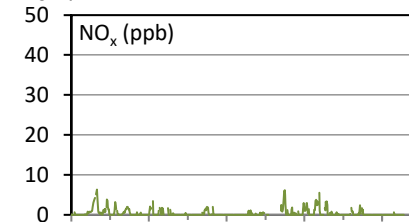
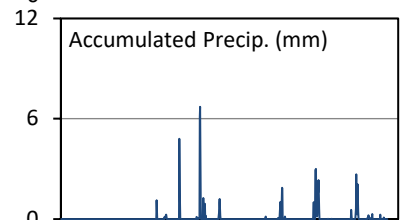
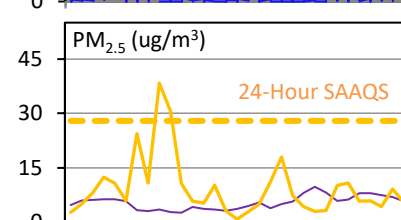
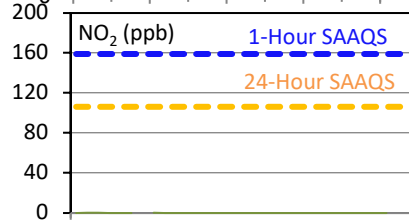
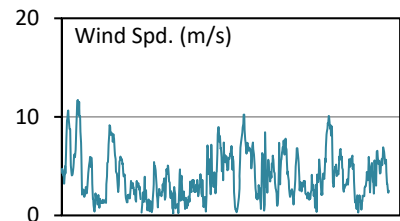
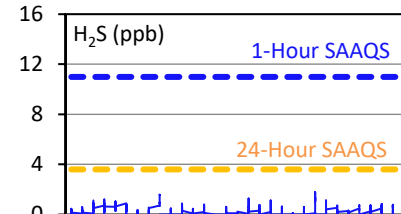
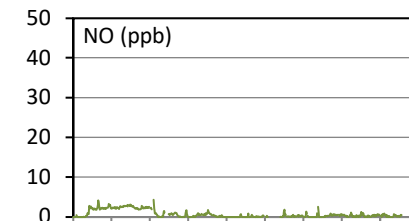
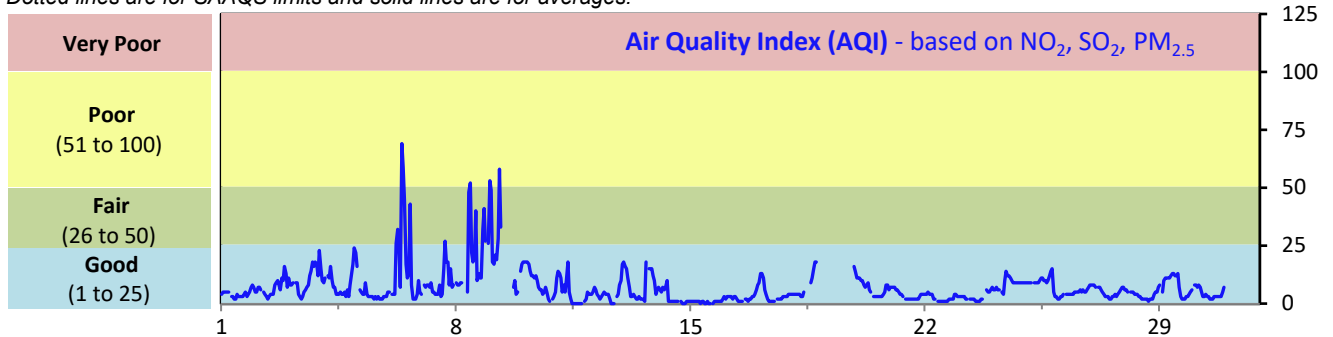
SESAA Oxbow Station - June 2022 Summary Report

Pollutants		Month Records		24-Hour Records				1-Hour Records			
Name	Conc. Unit	Avg. Conc.	Uptime	Maximum		SAAQS Standard	Exceed Days	Maximum		SAAQS Standard	Exceed Hours
				Conc.	Time			Conc.	Time		
NO	ppb	0.7	94.9%	2.5	Mar-06	-	-	4.3	Jun-08 08:00	-	-
NO ₂	ppb	0.4	94.9%	2.3	Mar-06	106	0	5.5	Jun-03 05:00	159	0
NO _x	ppb	0.4	94.9%	2.0	Mar-06	-	-	6.4	Jun-03 07:00	-	-
SO ₂	ppb	0.3	99.6%	1.0	Jun-13	48	0	4.3	Jun-03 09:00	172	0
H ₂ S	ppb	0.2	99.6%	0.6	Jun-5	3.6	0	1.8	Jun-23 04:00	11	0
PM _{2.5}	ug/m ³	9	99.6%	31	Jun-9	28	1	117	Jun-06 09:00	-	-

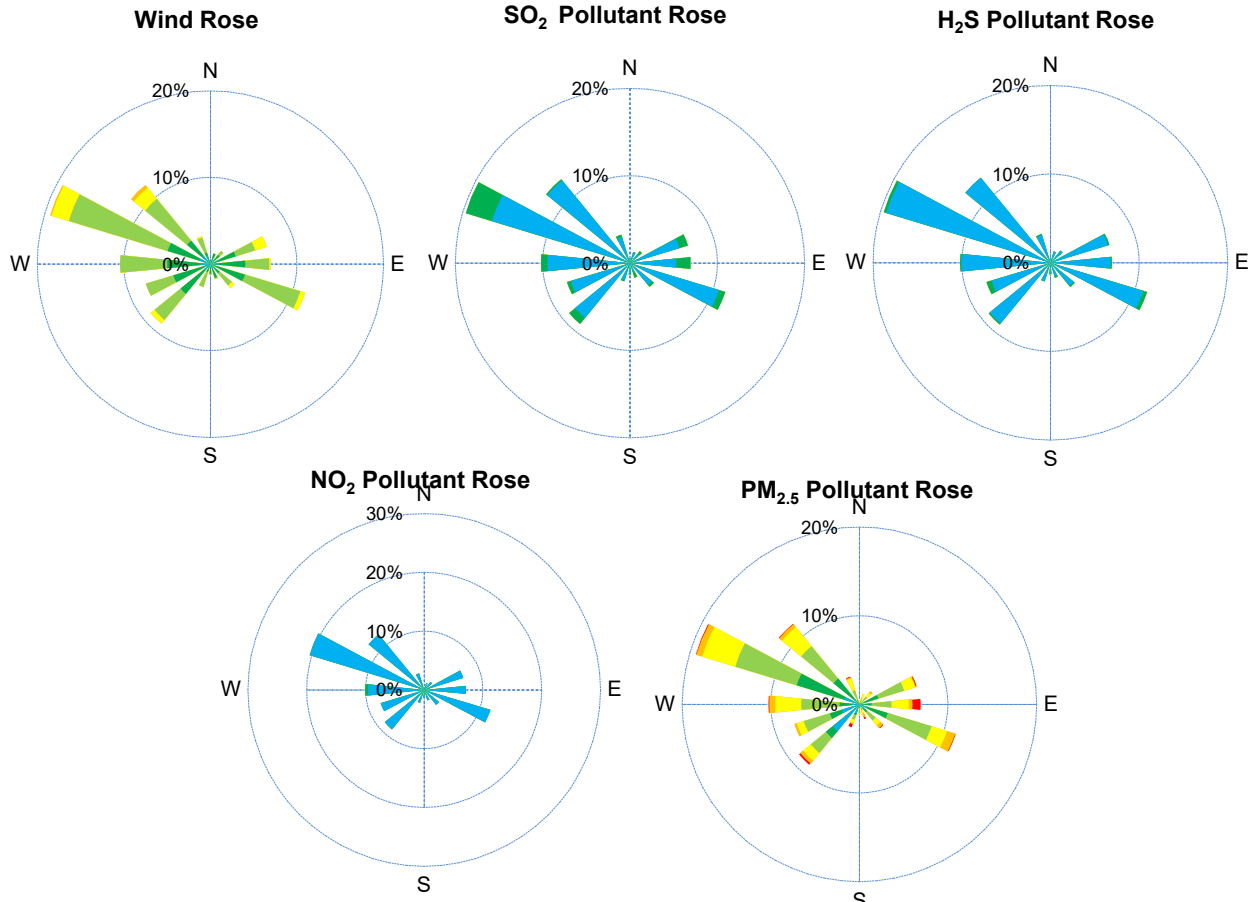
SAAQS: Saskatchewan Ambient Air Quality Standards

* Air Quality Standard refers to Saskatchewan Ambient Air Quality Standards (SAAQS).

* Dotted lines are for SAAQS limits and solid lines are for averages.



SESAA Oxbow Station - June 2022 Summary Report



Parameters	Unit	Color Code for Wind Spd & Pollutant Conc. Class					
Wind Speed	m/s	0.3 ≤ WS < 1.4	1.4 ≤ WS < 3.1	3.1 ≤ WS < 7.8	7.8 ≤ WS < 10.8	10.8 ≤ WS < 13.6	WS ≥ 13.6
SO ₂	ppb	0 ≤ C < 1	1 ≤ C < 5	5 ≤ C < 10	10 ≤ C < 57	57 ≤ C < 172	C ≥ 172
NO ₂	ppb	0 ≤ C < 5	5 ≤ C < 15	15 ≤ C < 30	30 ≤ C < 100	100 ≤ C < 212	C ≥ 212
H ₂ S	ppb	0 ≤ C < 1	1 ≤ C < 3.6	3.6 ≤ C < 5	5 ≤ C < 8	8 ≤ C < 10.8	C ≥ 10.8
PM _{2.5}	ug/m ³	0 ≤ C < 2	2 ≤ C < 4	4 ≤ C < 10	10 ≤ C < 20	20 ≤ C < 30	C ≥ 30

Monthly Update

- *All data has been slope, intercept, and baseline corrected. Data may change after validation process.
- *All compliance parameters were within the Saskatchewan Ambient Air Quality Standards with the exception of a 24-hr PM_{2.5} exceedance.
- *All compliance parameters had greater than 90% operational uptime.
- * 32 hours of data for NO, NO₂ and NO_x flagged as "analyzer failure" due to intermittent issues.
- *Routine quarterly calibrations were completed on June 9.

Exceedance Summary

24-hour Exceedance Information			Summary of Other Parameters During Exceedance								
Pollutant	24-hr Avg Conc.	Exceedance Date mmm-dd	WS m/s	WD deg	AQI -	Rain mm	ET C	SO ₂ ppb	NO ₂ ppb	H ₂ S ppb	PM _{2.5} ug/m ³
PM _{2.5}	31	9-Jun	2.2	157	-	0.0	16.8	-	-	-	31

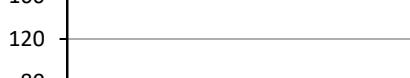
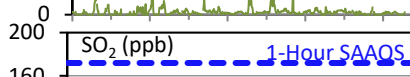
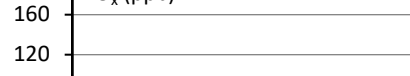
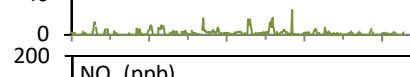
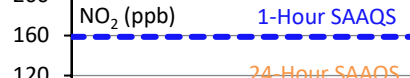
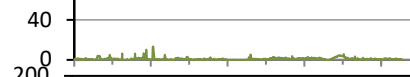
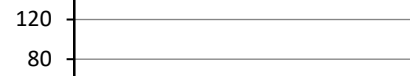
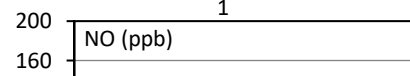
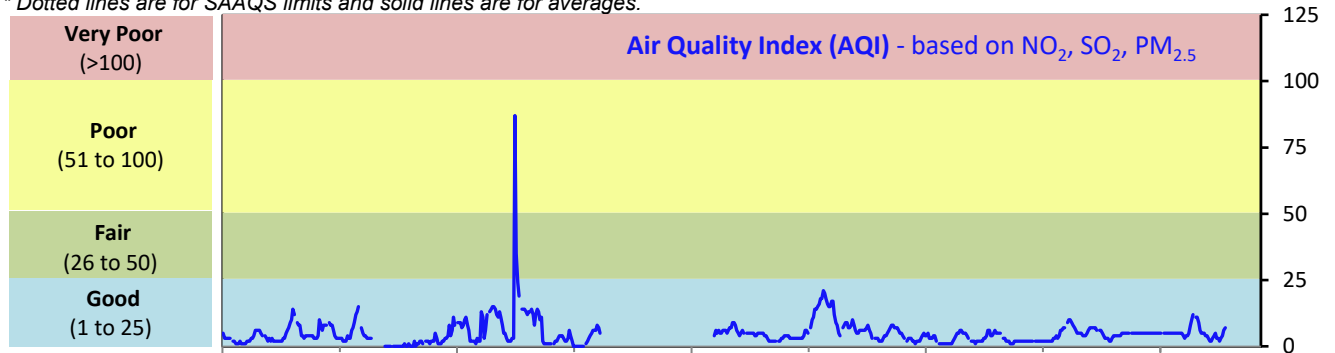
SESAA Stoughton Station - June 2022 Summary Report

Pollutants		Month Records		24-Hour Records				1-Hour Records			
Name	Conc. Unit	Avg. Conc.	Uptime	Maximum		SAAQS Standard	Exceed Days	Maximum		SAAQS Standard	Exceed Hours
				Conc.	Time			Conc.	Time		
NO	ppb	0.9	100.0%	3.1	Jun-25	-	-	13.6	Jun-08 05:00	-	-
NO ₂	ppb	1.7	100.0%	3.9	Jun-19	106	0	25.0	Jun-20 21:00	159	0
NO _x	ppb	2.4	100.0%	5.5	Jun-19	-	-	28.8	Jun-20 21:00	-	-
SO ₂	ppb	0.2	100.0%	0.7	Jun-9	48	0	3.8	Jun-09 08:00	172	0
H ₂ S	ppb	0.2	100.0%	0.6	Jun-17	3.6	0	2.2	Jun-17 02:00	11	0
PM _{2.5}	ug/m ³	6	88.9%	20	Jun-9	28	0	154	Jun-09 17:00	-	-

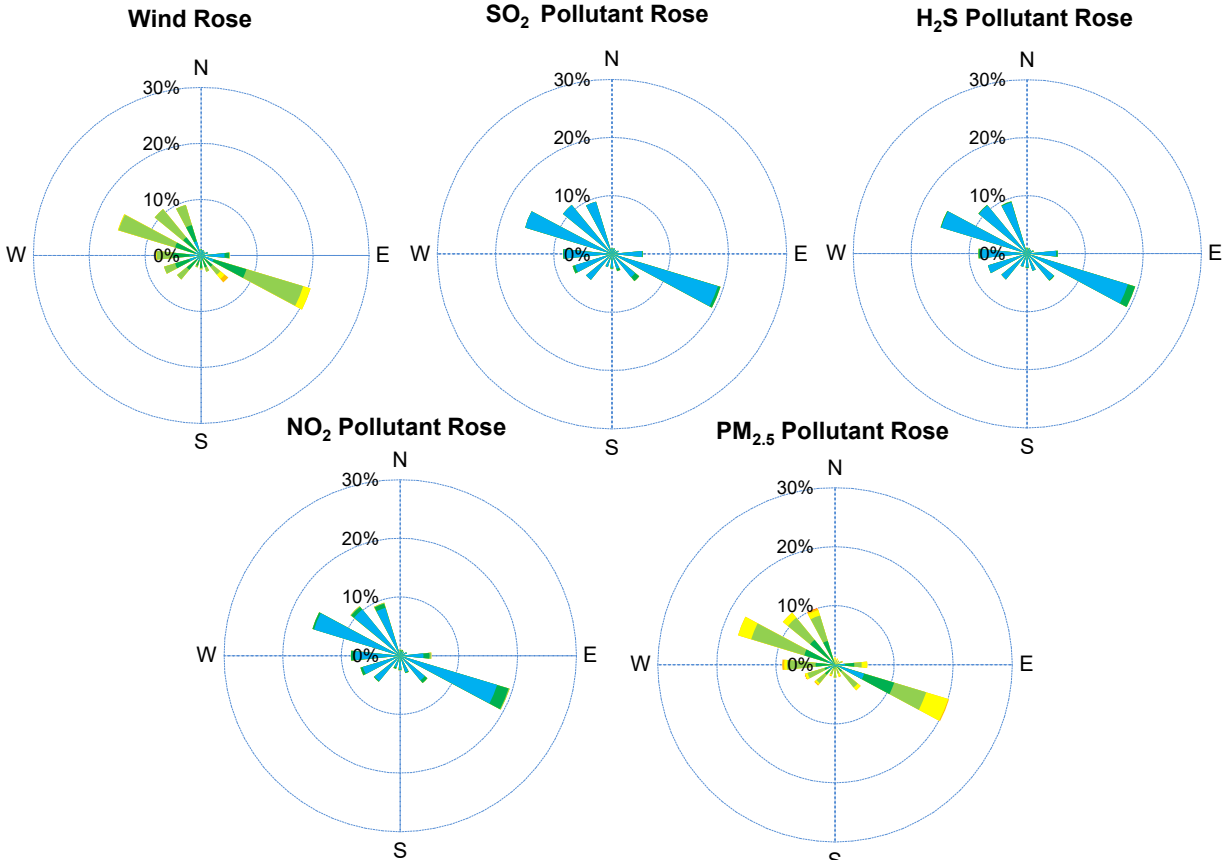
SAAQS: Saskatchewan Ambient Air Quality Standards

* Air Quality Standard refers to Saskatchewan Ambient Air Quality Standards (SAAQS).

* Dotted lines are for SAAQS limits and solid lines are for averages.



SESAA Stoughton Station - June 2022 Summary Report



Parameters	Unit	Color Code for Wind Spd & Pollutant Conc. Class						
Wind Speed	m/s	0.3 ≤ WS < 1.4	1.4 ≤ WS < 3.1	3.1 ≤ WS < 7.8	7.8 ≤ WS < 10.8	10.8 ≤ WS < 13.6	WS ≥ 13.6	
SO ₂	ppb	0 ≤ C < 1	1 ≤ C < 5	5 ≤ C < 10	10 ≤ C < 57	57 ≤ C < 172	C ≥ 172	
NO ₂	ppb	0 ≤ C < 5	5 ≤ C < 15	15 ≤ C < 30	30 ≤ C < 100	100 ≤ C < 212	C ≥ 212	
H ₂ S	ppb	0 ≤ C < 1	1 ≤ C < 3.6	3.6 ≤ C < 5	5 ≤ C < 8	8 ≤ C < 10.8	C ≥ 10.8	
PM _{2.5}	ug/m ³	0 ≤ C < 2	2 ≤ C < 4	4 ≤ C < 10	10 ≤ C < 20	20 ≤ C < 30	C ≥ 30	

Monthly Update

*All data has been slope, intercept, and baseline corrected. Data may change after validation process.

*All compliance parameters were within the Saskatchewan Ambient Air Quality Standards.

*All compliance parameters had greater than 90% operational uptime with the exception of PM2.5 Intermittent issues occurred throughout the mo

*Routine quarterly calibrations were completed on June 5.

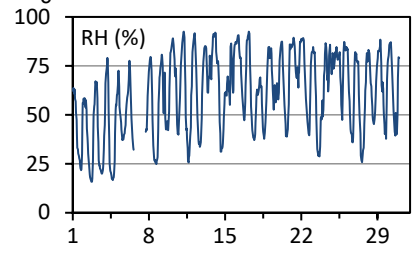
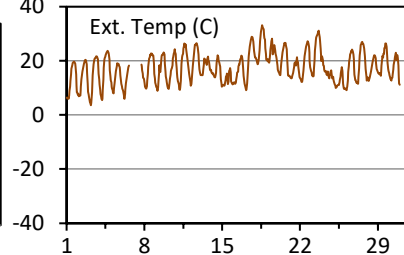
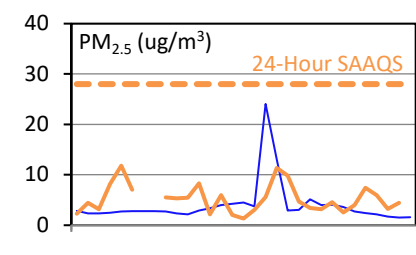
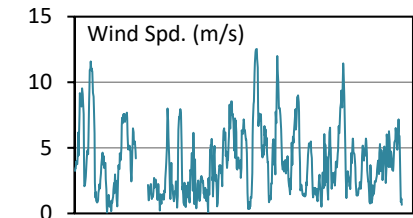
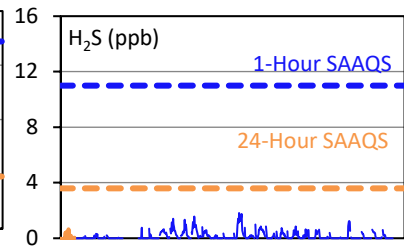
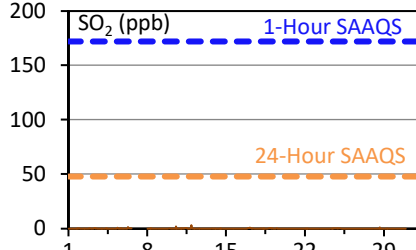
SESAA Torquay Station - June 2022 Summary Report

Pollutants		Month Records		24-Hour Records				1-Hour Records			
Name	Conc. Unit	Avg. Conc.	Uptime	Maximum		SAAQS Standard	Exceed Days	Maximum		SAAQS Standard	Exceed Hours
				Conc.	Time			Conc.	Time		
SO ₂	ppb	< 0.1	96.2%	< 0.1	Jun-12	48	0	3.3	Jun-11 22:00	172	0
H ₂ S	ppb	0.2	96.2%	0.6	Jun-17	3.6	0	1.8	Jun-17 02:00	11	0
PM _{2.5}	ug/m3	5	96.4%	12	Jun-4	28	0	30	Jun-04 22:00	-	-

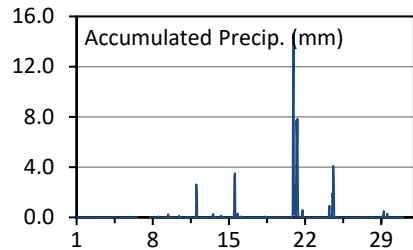
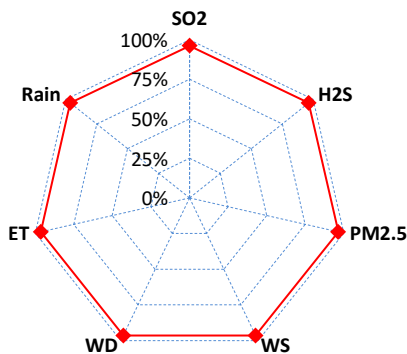
SAAQS: Saskatchewan Ambient Air Quality Standards

* Air Quality Standard refers to Saskatchewan Ambient Air Quality Standards (SAAQS).

* Dotted lines are for SAAQS limits and solid lines are for averages.



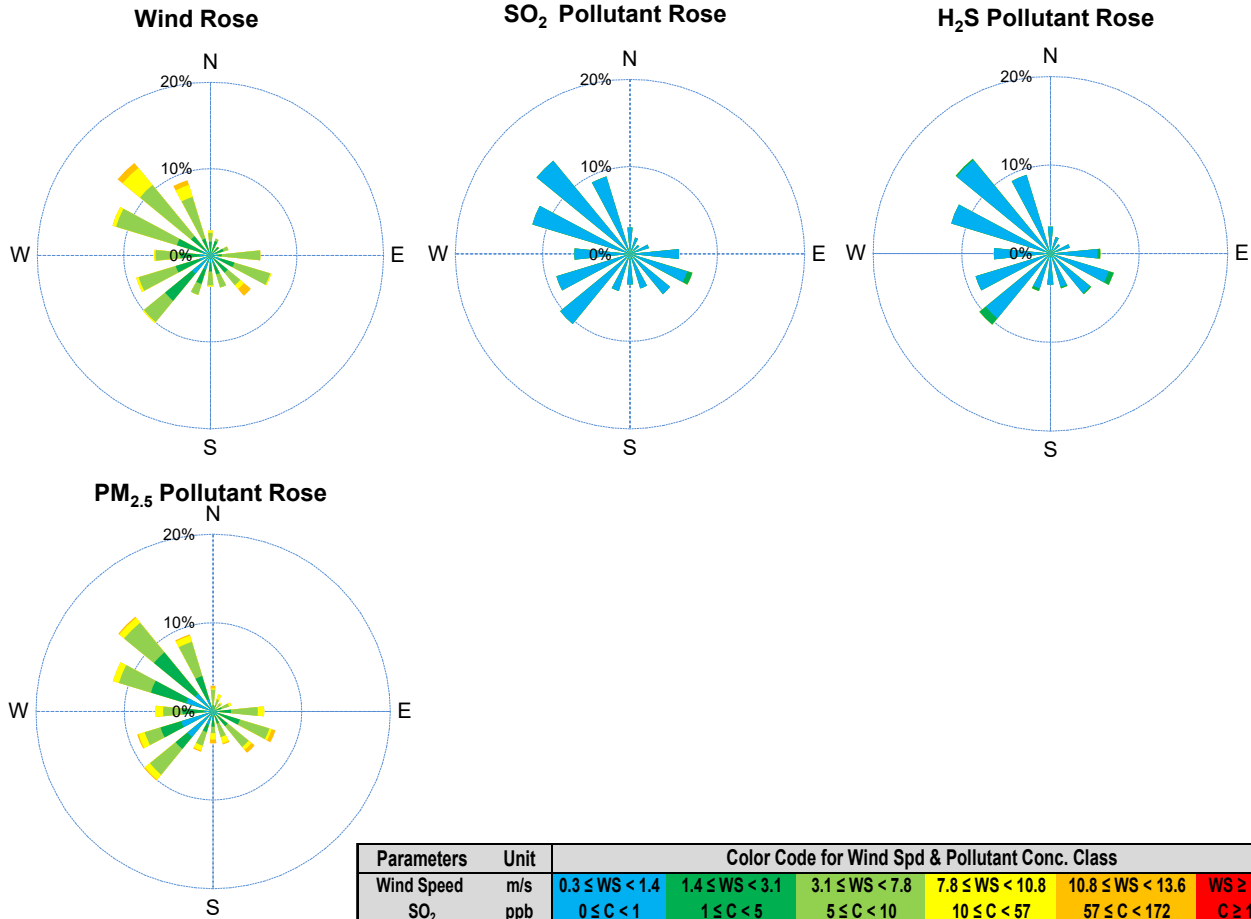
Instrument Uptime (%)



Monthly Update

- *All data has been slope, intercept, and baseline corrected. Data may change after validation process.
- *All compliance parameters were within the Saskatchewan Ambient Air Quality Standards.
- *All compliance parameters were less than 90% operational.
- * 26 hours of data flagged as "power failure" for all parameters due to issues with an electronic board.

SESAA Torquay Station - June 2022 Summary Report



Parameters	Unit	Color Code for Wind Spd & Pollutant Conc. Class					
Wind Speed	m/s	$0.3 \leq WS < 1.4$	$1.4 \leq WS < 3.1$	$3.1 \leq WS < 7.8$	$7.8 \leq WS < 10.8$	$10.8 \leq WS < 13.6$	$WS \geq 13.6$
SO ₂	ppb	$0 \leq C < 1$	$1 \leq C < 5$	$5 \leq C < 10$	$10 \leq C < 57$	$57 \leq C < 172$	$C \geq 172$
NO ₂	ppb	$0 \leq C < 5$	$5 \leq C < 15$	$15 \leq C < 30$	$30 \leq C < 100$	$100 \leq C < 212$	$C \geq 212$
O ₃	ppb	$0 \leq C < 10$	$10 \leq C < 20$	$20 \leq C < 40$	$40 \leq C < 60$	$60 \leq C < 82$	$C \geq 82$
H ₂ S	ppb	$0 \leq C < 1$	$1 \leq C < 3.6$	$3.6 \leq C < 5$	$5 \leq C < 8$	$8 \leq C < 10.8$	$C \geq 10.8$
PM _{2.5}	ug/m ³	$0 \leq C < 2$	$2 \leq C < 4$	$4 \leq C < 10$	$10 \leq C < 20$	$20 \leq C < 30$	$C \geq 30$

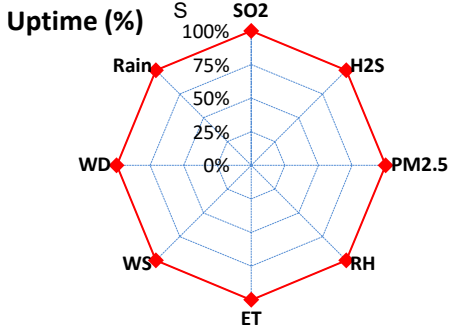
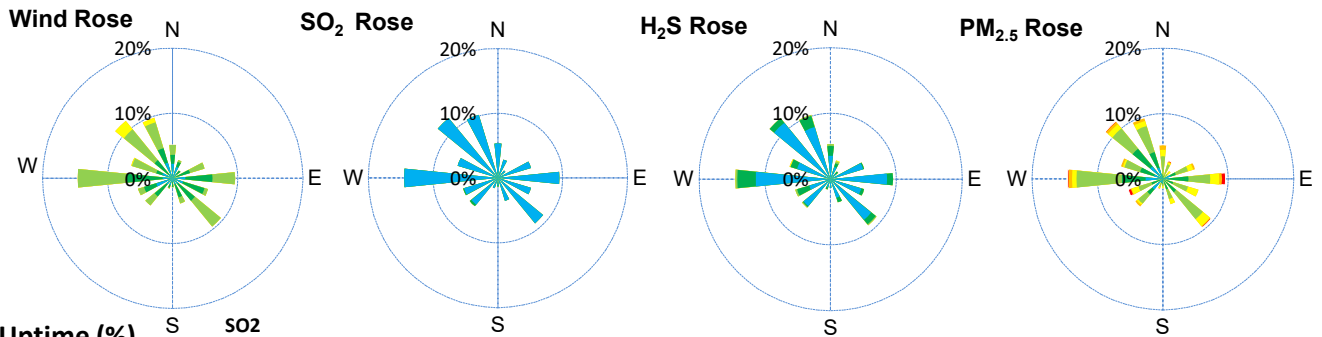
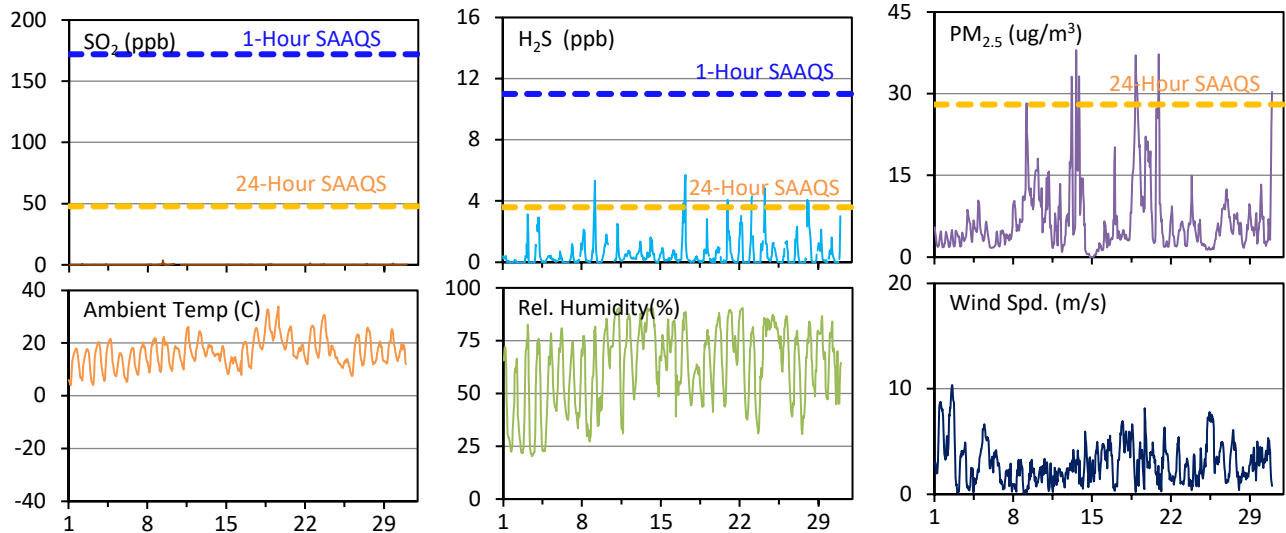
SESAA Wauchope Station - June 2022 Summary Report

Pollutants		Month Records		24-Hour Records				1-Hour Records			
Name	Conc. Unit	Avg. Conc.	Uptime	Maximum		SAAQS Objective	Exceed Days	Maximum		SAAQS Objective	Exceed Hours
				Conc.	Time			Conc.	Time		
SO ₂	ppb	0.1	100.0%	< 0.1	Jun-09	48	0	3.8	Jun-09 08:00	172	0
H ₂ S	ppb	0.5	100.0%	1.2	Jun-17	3.6	0	5.7	Jun-17 05:00	11	0
PM _{2.5}	ug/m ³	7	100.0%	17	Jun-13	28	0	38	Jun-13 14:00	-	-

SAAQS: Saskatchewan Ambient Air Quality Standards

* Air Quality Standard refers to Saskatchewan Ambient Air Quality Standards (SAAQS).

* Dotted lines are for SAAQS limits and solid lines are for averages.



Parameters	Unit	Color Code for Wind Spd & Pollutant Conc. Class					
Wind Speed	m/s	0.3 ≤ WS < 1.4	1.4 ≤ WS < 3.1	3.1 ≤ WS < 7.8	7.8 ≤ WS < 10.8	10.8 ≤ WS < 13.6	WS ≥ 13.6
SO ₂	ppb	0 ≤ C < 1	1 ≤ C < 5	5 ≤ C < 10	10 ≤ C < 57	57 ≤ C < 172	C ≥ 172
H ₂ S	ppb	0 ≤ C < 1	1 ≤ C < 3.6	3.6 ≤ C < 5	5 ≤ C < 8	8 ≤ C < 10.8	C ≥ 10.8
PM _{2.5}	ug/m ³	0 ≤ C < 2	2 ≤ C < 4	4 ≤ C < 10	10 ≤ C < 20	20 ≤ C < 30	C ≥ 30

Monthly Update

*All data has been slope, intercept, and baseline corrected. Data may change after validation process.

*All compliance parameters were within the Saskatchewan Ambient Air Quality Standards.

*All compliance parameters were greater than 90% operational.

*Routine quarterly calibrations were completed on June 10.

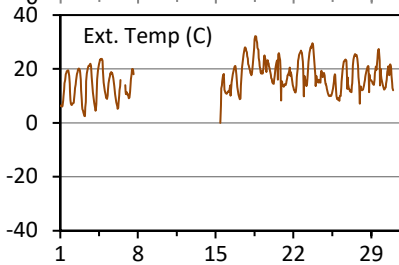
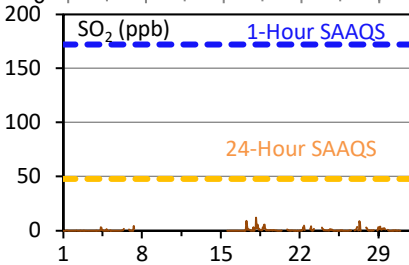
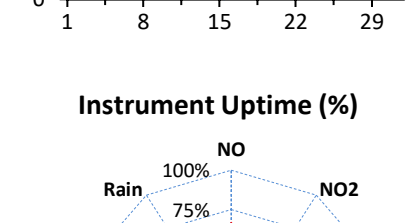
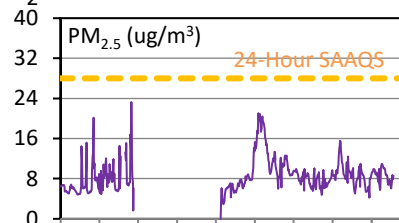
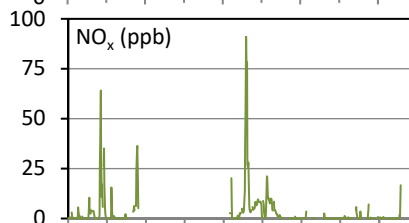
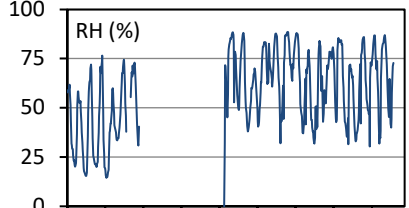
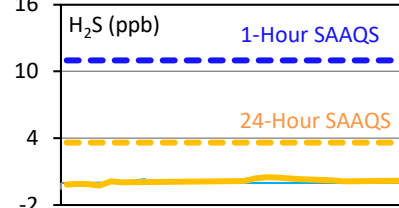
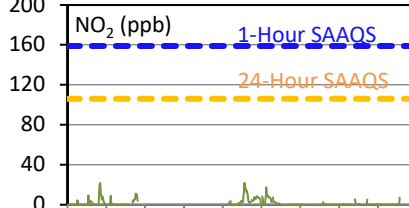
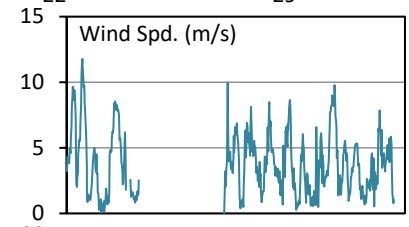
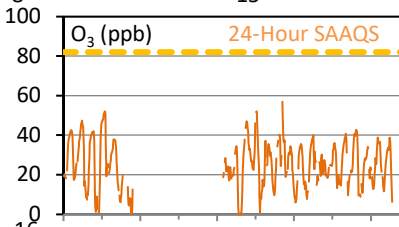
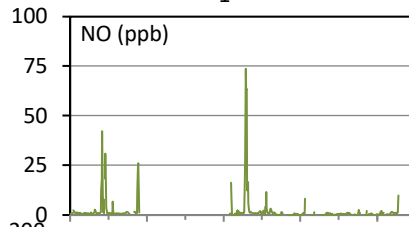
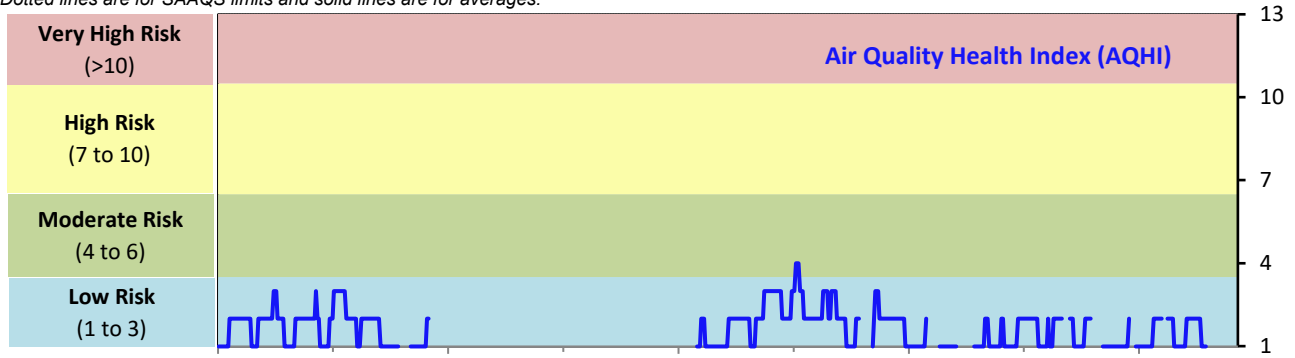
SESAA Weyburn Station - June 2022 Summary Report

Pollutants		Month Records		24-Hour Records				1-Hour Records			
Name	Conc. Unit	Avg. Conc.	Uptime	Maximum		SAAQS Standard	Exceed Days	Maximum		SAAQS Standard	Exceed Hours
				Conc.	Time			Conc.	Time		
NO	ppb	2.0	62.0%	11.5	Jun-17	-	-	73.7	Jun-17 00:00	-	-
NO ₂	ppb	1.8	62.0%	6.9	Jun-17	106	0	22.0	Jun-03 22:00	159	0
NO _x	ppb	3.5	62.0%	18.5	Jun-17	-	-	91.1	Jun-17 00:00	-	-
SO ₂	ppb	0.5	62.1%	2.7	Jun-18	48	0	12.1	Jun-18 03:00	172	0
O ₃	ppb	25	69.9%	32	Jun-2	-	-	57	Jun-20 22:00	82	0
H ₂ S	ppb	0.3	61.8%	0.5	Jun-18	3.6	0	4.9	Jun-17 02:00	11	0
PM _{2.5}	ug/m3	9	72.8%	15	Jun-19	28	0	23	Jun-07 09:00	-	-

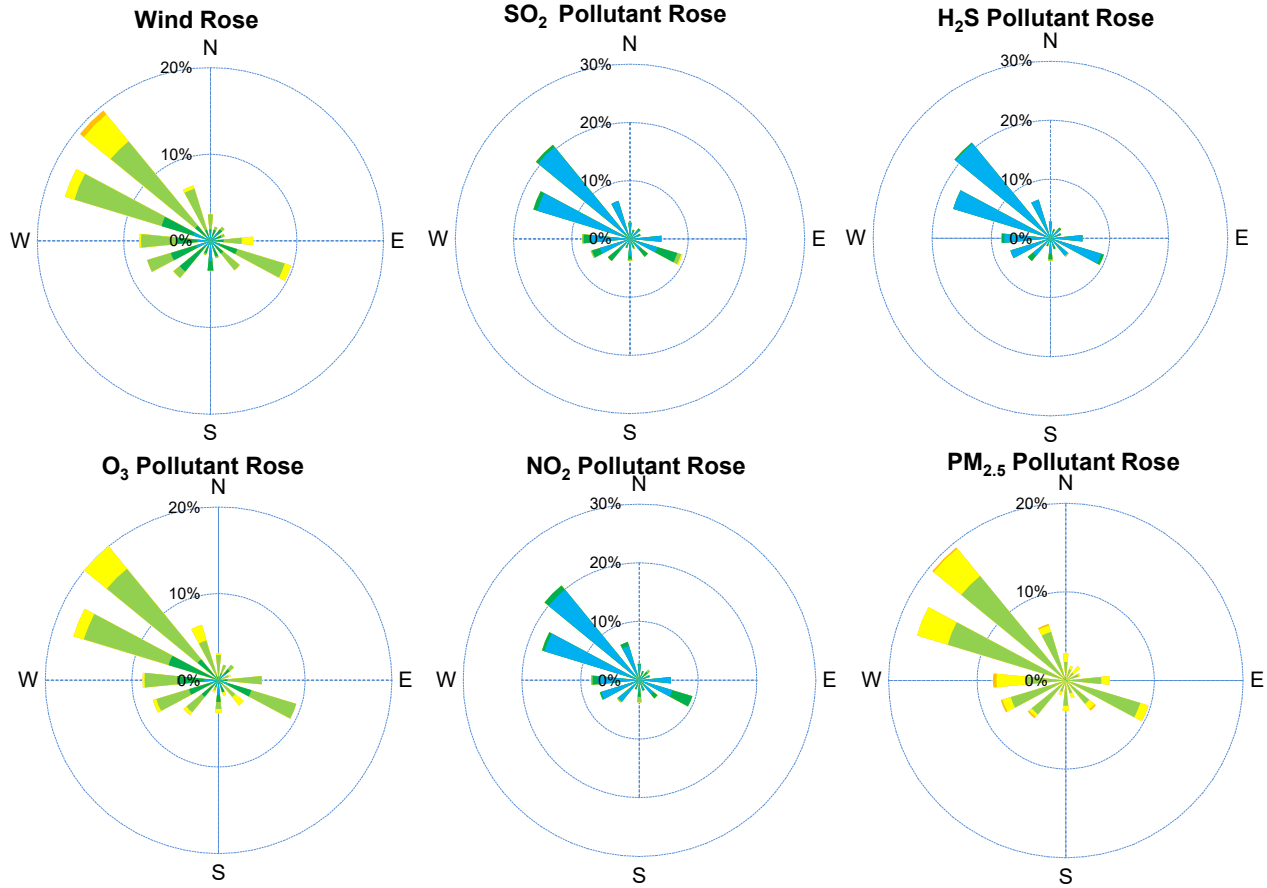
SAAQS: Saskatchewan Ambient Air Quality Standards

* Air Quality Standard refers to Saskatchewan Ambient Air Quality Standards (SAAQS).

* Dotted lines are for SAAQS limits and solid lines are for averages.



SESAA Weyburn Station - June 2022 Summary Report



Parameters	Unit	Color Code for Wind Spd & Pollutant Conc. Class					
Wind Speed	m/s	$0.3 \leq WS < 1.4$	$1.4 \leq WS < 3.1$	$3.1 \leq WS < 7.8$	$7.8 \leq WS < 10.8$	$10.8 \leq WS < 13.6$	$WS \geq 13.6$
SO ₂	ppb	$0 \leq C < 1$	$1 \leq C < 5$	$5 \leq C < 10$	$10 \leq C < 57$	$57 \leq C < 172$	$C \geq 172$
NO ₂	ppb	$0 \leq C < 5$	$5 \leq C < 15$	$15 \leq C < 30$	$30 \leq C < 100$	$100 \leq C < 212$	$C \geq 212$
O ₃	ppb	$0 \leq C < 10$	$10 \leq C < 20$	$20 \leq C < 40$	$40 \leq C < 60$	$60 \leq C < 82$	$C \geq 82$
H ₂ S	ppb	$0 \leq C < 1$	$1 \leq C < 3.6$	$3.6 \leq C < 5$	$5 \leq C < 8$	$8 \leq C < 10.8$	$C \geq 10.8$
PM _{2.5}	ug/m ³	$0 \leq C < 2$	$2 \leq C < 4$	$4 \leq C < 10$	$10 \leq C < 20$	$20 \leq C < 30$	$C \geq 30$

Monthly Update

- *All data has been slope, intercept, and baseline corrected. Data may change after validation process.
- *All compliance parameters were within the Saskatchewan Ambient Air Quality Standards.
- *All compliance parameters were below 90% operational. An issue with overheating caused intermittent power interruptions for the month.
- *Around 200 hours of data for all parameters is flagged as "analyzer failure" due to analyzer issues on site.
- *Routine quarterly calibrations were completed on June 7.