

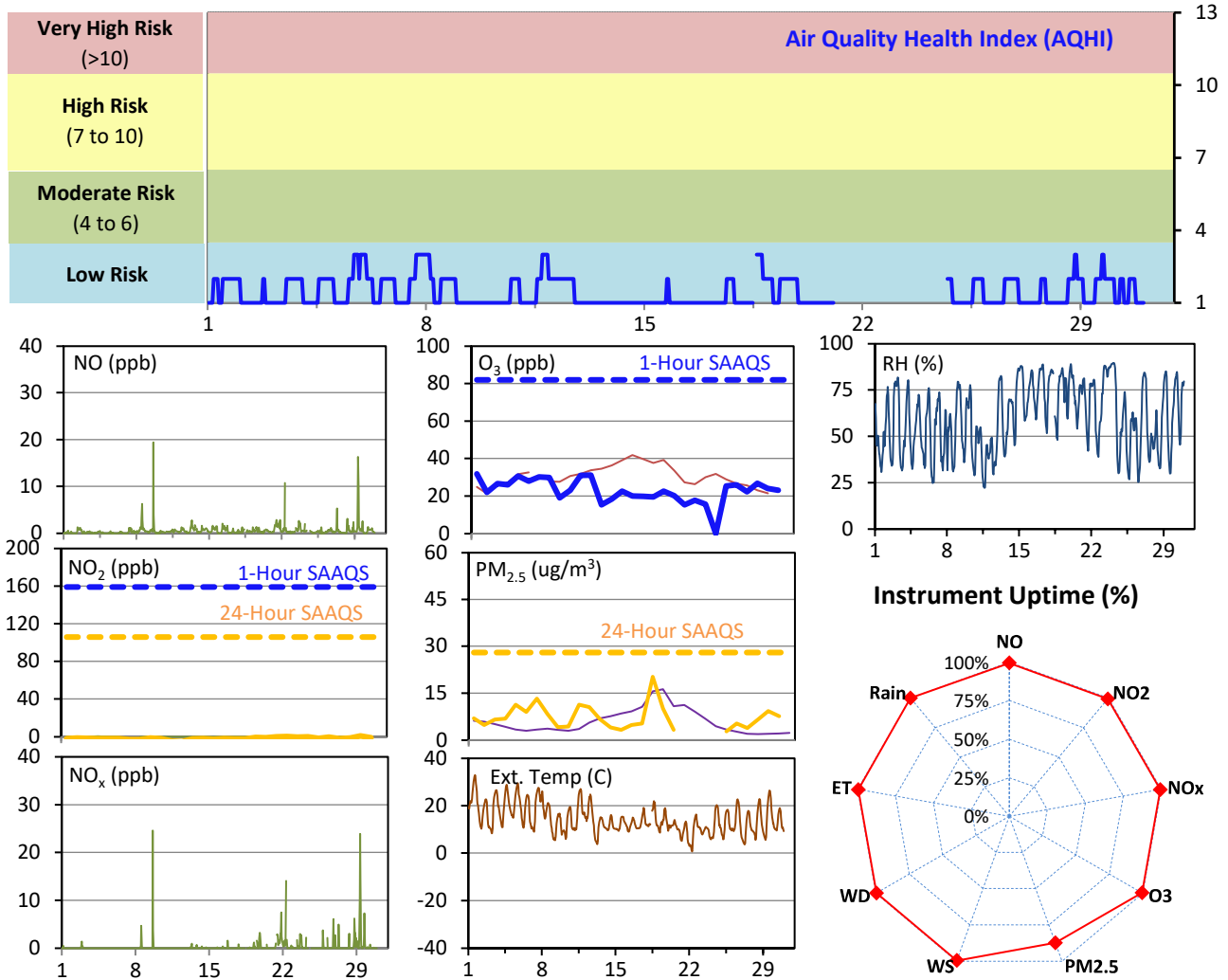
# SESAA Esterhazy Station - September 2022 Summary Report

Pollutants		Month Records		24-Hour Records				1-Hour Records			
Name	Conc. Unit	Avg. Conc.	Uptime	Maximum		SAAQS Standard	Exceed Days	Maximum		SAAQS Standard	Exceed Hours
				Conc.	Time			Conc.	Time		
NO	ppb	0.5	99.4%	2.0	Sep-29	-	-	19.4	Sep-09 15:00	-	-
NO <sub>2</sub>	ppb	0.1	99.4%	< 0.1	Sep-29	106	0	7.7	Sep-29 08:00	159	0
NO <sub>x</sub>	ppb	0.4	99.4%	< 0.1	Sep-29	-	-	24.6	Sep-09 15:00	-	-
O <sub>3</sub>	ppb	23	99.4%	32	Sep-1	-	-	42	Sep-03 15:00	82	0
PM <sub>2.5</sub>	ug/m3	7	87.4%	16	Sep-18	28	0	61	Sep-30 06:00	-	-

SAAQS: Saskatchewan Ambient Air Quality Standards

\* Air Quality Standard refers to Saskatchewan Ambient Air Quality Standards (SAAQS).

\* Dotted lines are for SAAQS limits and solid lines are for averages.



## Monthly Update

\*All data has been slope, intercept, and baseline corrected. Data may change after validation process.

\*All compliance parameters were within the Saskatchewan Ambient Air Quality Standards.

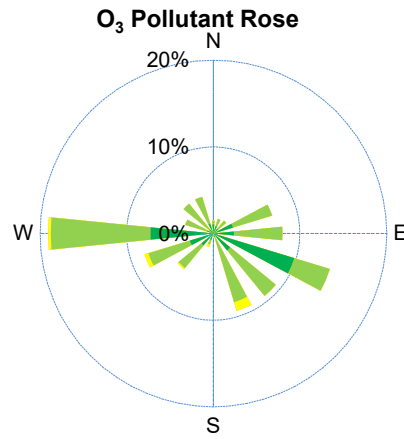
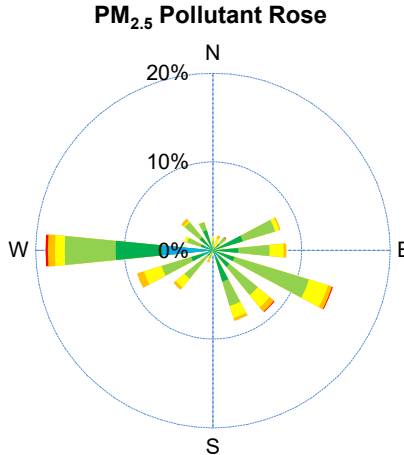
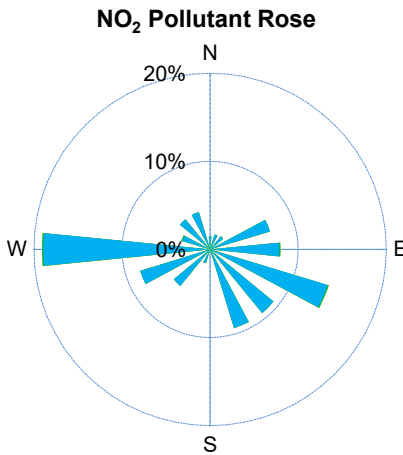
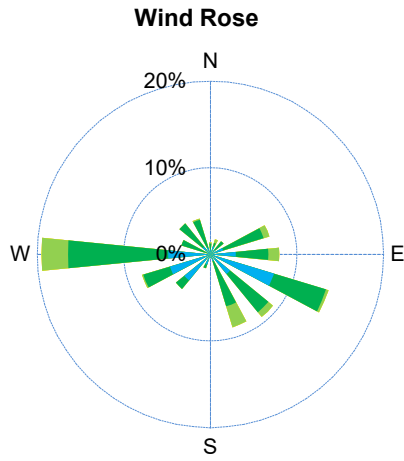
\*All compliance parameters were greater than 90% operational with the exception of PM<sub>2.5</sub>.

\* 87 hours of data for PM<sub>2.5</sub> was flagged as "analyzer failure" due to a bug in the intake inlet.

\* 4 hours of data for all parameters was flagged as "power failure" due to power issues on site.

\*Routine quarterly calibrations were completed on Sept 24.

# SESAA Esterhazy Station - September 2022 Summary Report



Parameters	Unit	Color Code for Wind Spd & Pollutant Conc. Class					
Wind Speed	m/s	$0.3 \leq WS < 1.4$	$1.4 \leq WS < 3.1$	$3.1 \leq WS < 7.8$	$7.8 \leq WS < 10.8$	$10.8 \leq WS < 13.6$	$WS \geq 13.6$
NO <sub>2</sub>	ppb	$0 \leq C < 5$	$5 \leq C < 15$	$15 \leq C < 30$	$30 \leq C < 100$	$100 \leq C < 212$	$C \geq 212$
PM <sub>2.5</sub>	ug/m <sup>3</sup>	$0 \leq C < 2$	$2 \leq C < 4$	$4 \leq C < 10$	$10 \leq C < 20$	$20 \leq C < 30$	$C \geq 30$
O <sub>3</sub>	ppb	$0 \leq C < 10$	$10 \leq C < 20$	$20 \leq C < 40$	$40 \leq C < 60$	$60 \leq C < 82$	$C \geq 82$

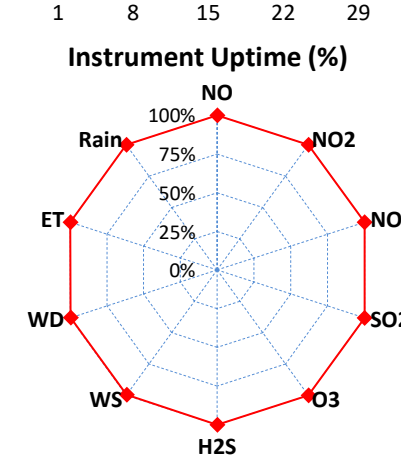
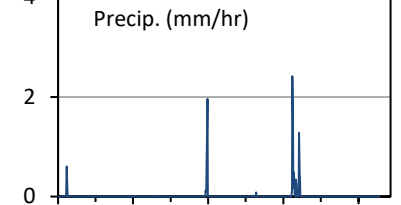
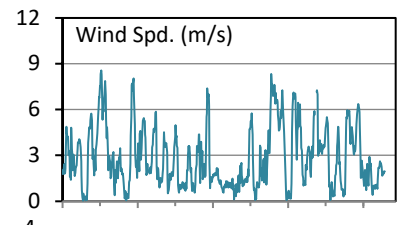
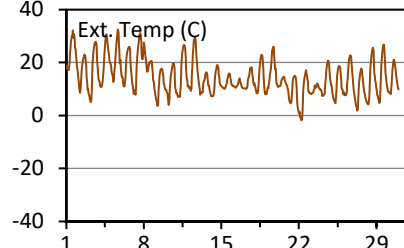
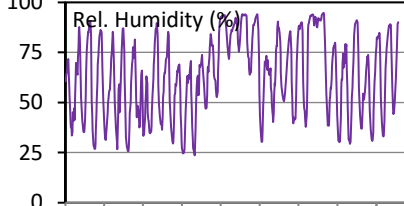
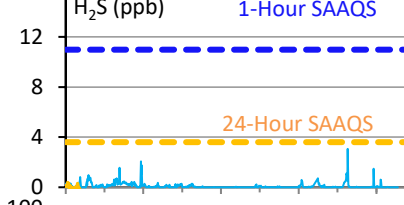
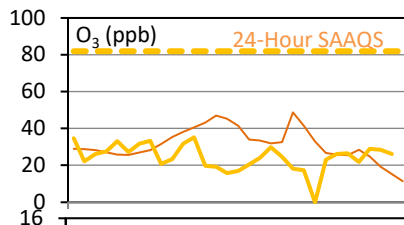
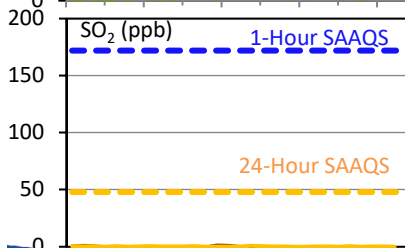
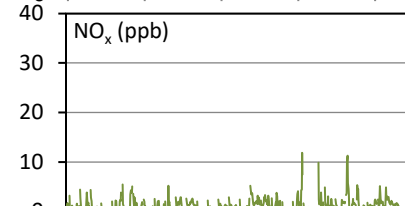
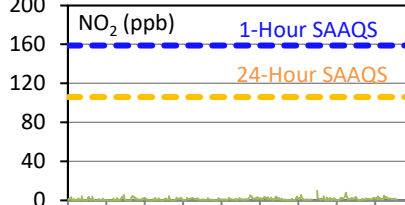
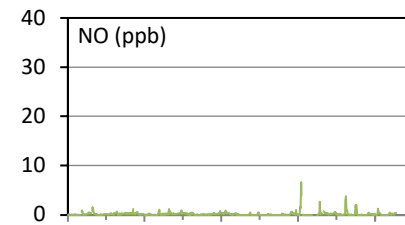
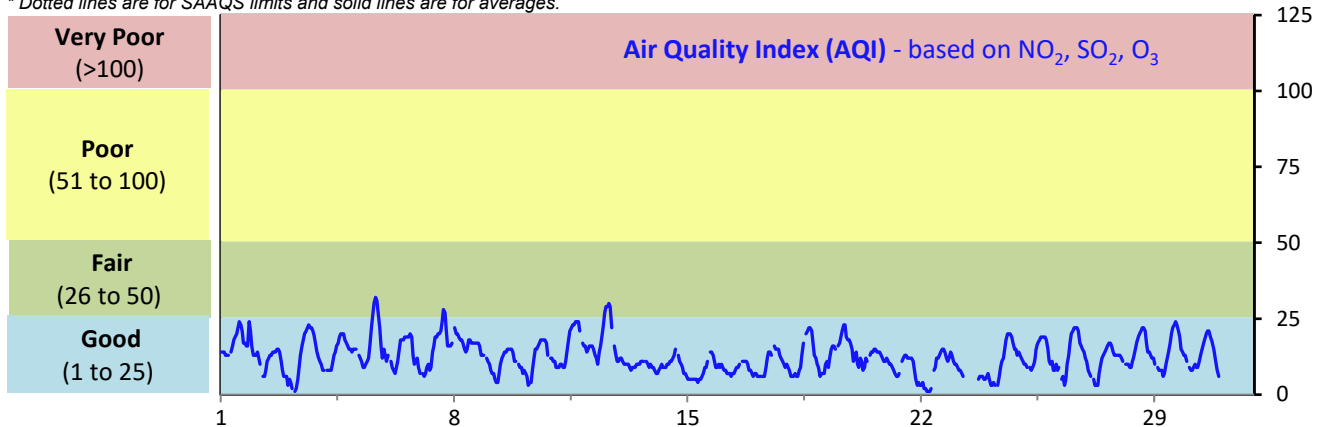
# SESAA Glen Ewen Station - September 2022 Summary Report

Pollutants		Month Records		24-Hour Records				1-Hour Records			
Name	Conc. Unit	Avg. Conc.	Uptime	Maximum		SAAQS Standard	Exceed Days	Maximum		SAAQS Standard	Exceed Hours
				Conc.	Time			Conc.	Time		
NO	ppb	0.2	100.0%	0.3	Sep-11	-	-	6.7	Sep-22 06:00	-	-
NO <sub>2</sub>	ppb	1.0	100.0%	2.3	Sep-26	106	0	9.8	Sep-23 17:00	159	0
NO <sub>x</sub>	ppb	1.2	100.0%	2.8	Sep-26	-	-	11.9	Sep-22 06:00	-	-
SO <sub>2</sub>	ppb	0.2	100.0%	0.4	Sep-1	48	0	5.3	Sep-08 01:00	172	0
O <sub>3</sub>	ppb	25	100.0%	35	Sep-12	-	-	58	Sep-05 15:00	82	0
H <sub>2</sub> S	ppb	0.1	100.0%	0.4	Sep-5	3.6	0	3.1	Sep-26 10:00	11	0

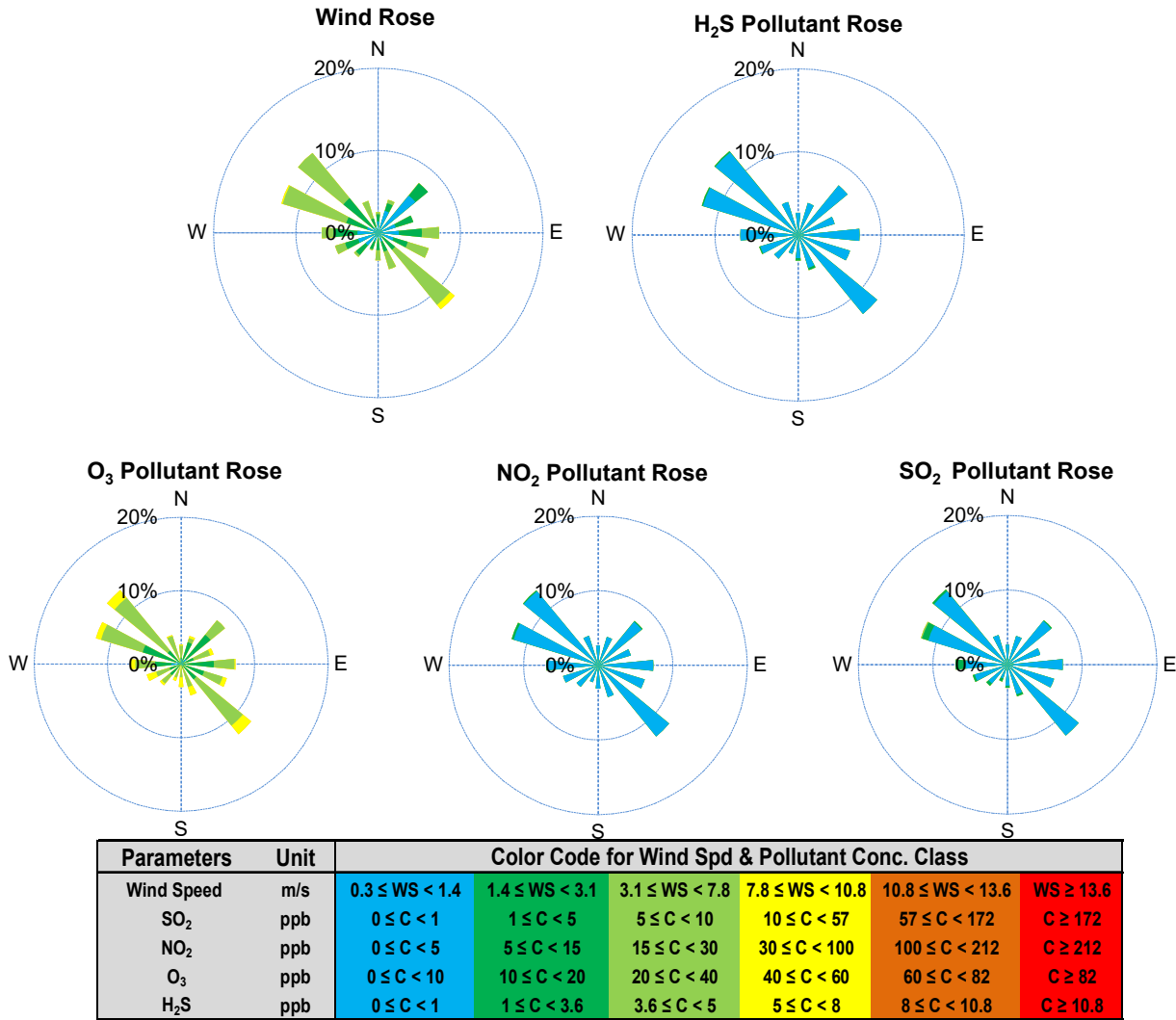
SAAQS: Saskatchewan Ambient Air Quality Standards

\* Air Quality Standard refers to Saskatchewan Ambient Air Quality Standards (SAAQS).

\* Dotted lines are for SAAQS limits and solid lines are for averages.



# SESAA Glen Ewen Station - September 2022 Summary Report



## Monthly Update

- \*All data has been slope, intercept, and baseline corrected. Data may change after validation process.
- \*All compliance parameters were within the Saskatchewan Ambient Air Quality Standards.
- \*All compliance parameters were greater than 90% operational.
- \*Routine quarterly calibrations were completed on Sept 23.

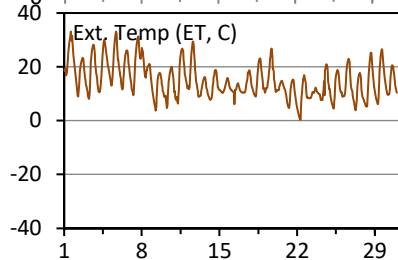
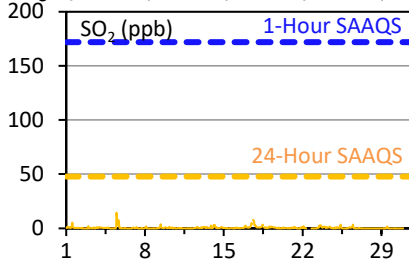
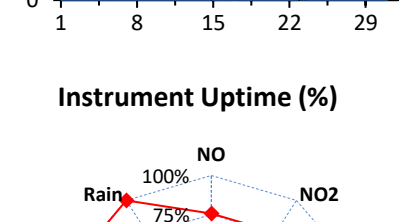
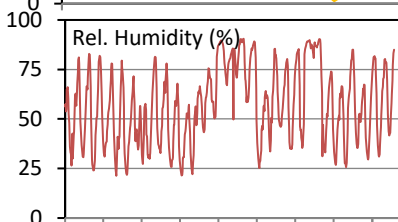
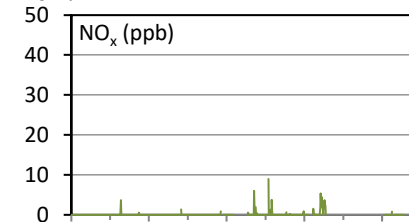
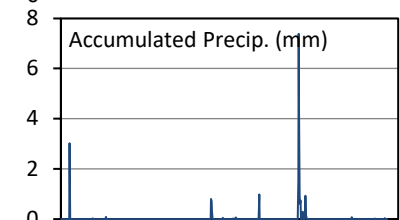
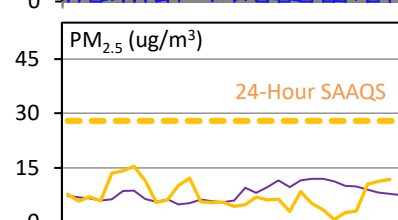
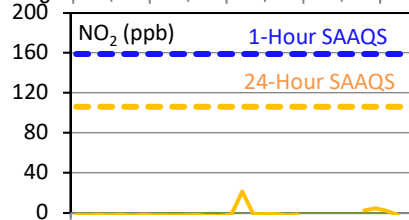
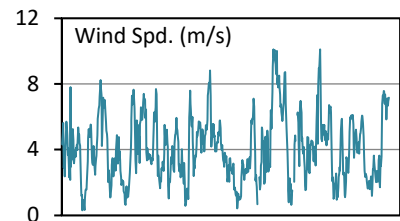
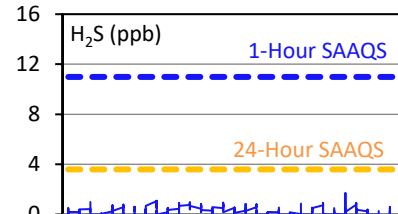
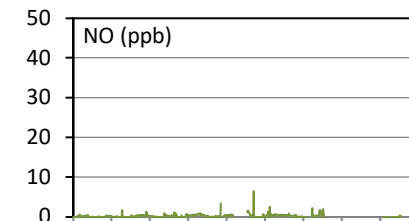
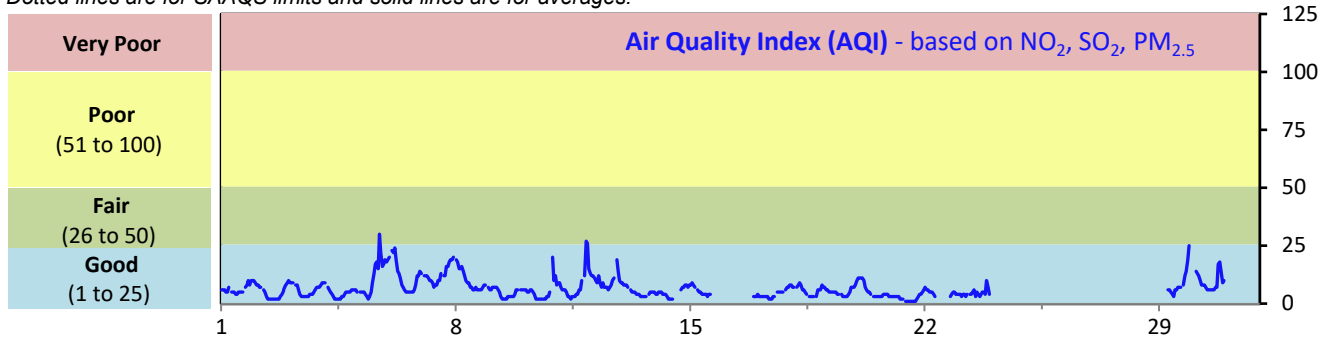
# SESAA Oxbow Station - September 2022 Summary Report

Pollutants		Month Records		24-Hour Records				1-Hour Records			
Name	Conc. Unit	Avg. Conc.	Uptime	Maximum		SAAQS Standard	Exceed Days	Maximum		SAAQS Standard	Exceed Hours
				Conc.	Time			Conc.	Time		
NO	ppb	0.2	75.6%	0.5	Sep-12	-	-	6.5	Sep-17 11:00	-	-
NO <sub>2</sub>	ppb	< 0.1	75.6%	< 0.1	Aug-01	106	0	7.8	Sep-18 18:00	159	0
NO <sub>x</sub>	ppb	0.1	75.6%	< 0.1	Aug-01	-	-	9.0	Sep-18 18:00	-	-
SO <sub>2</sub>	ppb	0.5	100.0%	2.5	Sep-17	48	0	14.6	Sep-05 11:00	172	0
H <sub>2</sub> S	ppb	0.3	100.0%	0.7	Sep-12	3.6	0	1.7	Sep-26 07:00	11	0
PM <sub>2.5</sub>	ug/m <sup>3</sup>	7	100.0%	15	Sep-7	28	0	143	Sep-28 18:00	-	-

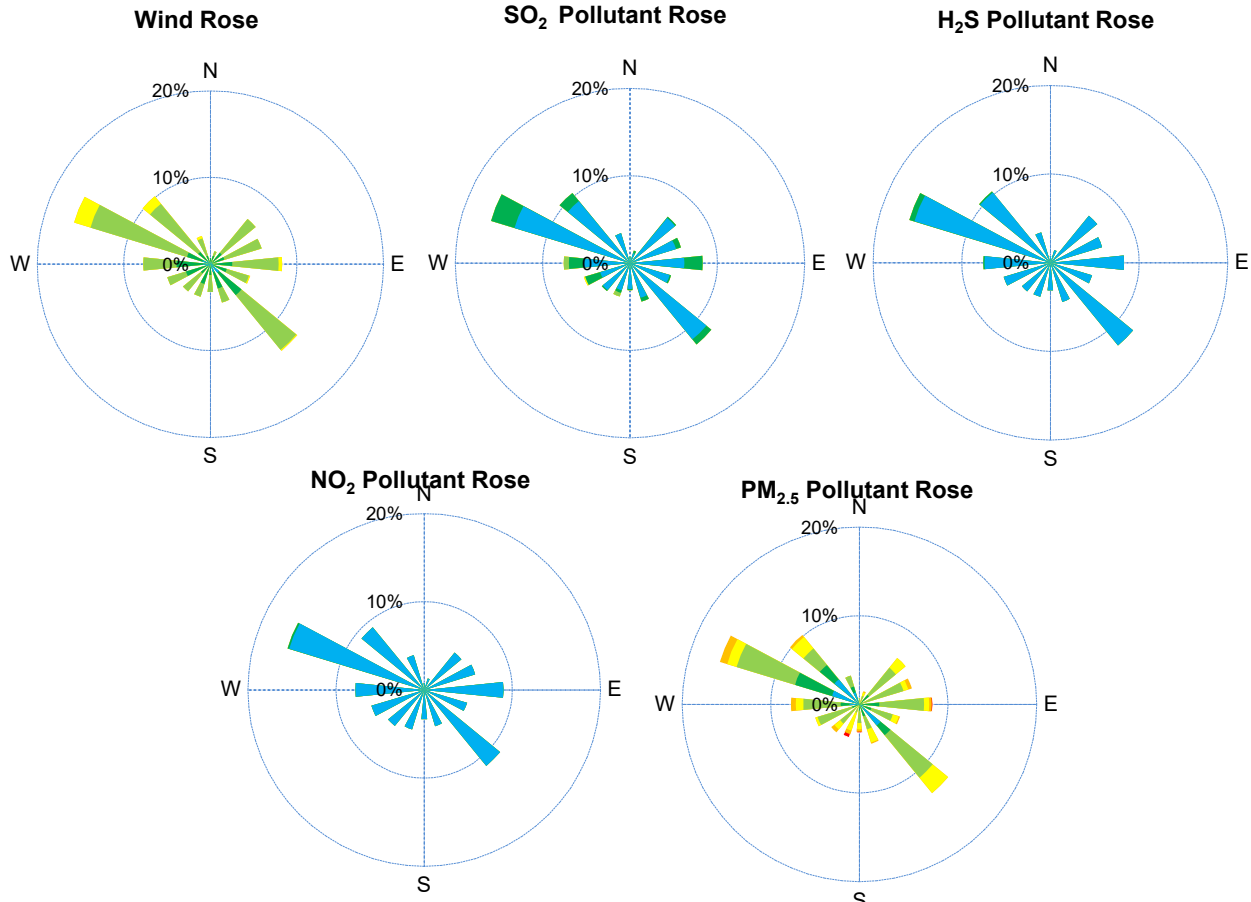
SAAQS: Saskatchewan Ambient Air Quality Standards

\* Air Quality Standard refers to Saskatchewan Ambient Air Quality Standards (SAAQS).

\* Dotted lines are for SAAQS limits and solid lines are for averages.



# SESAA Oxbow Station - September 2022 Summary Report



Parameters	Unit	Color Code for Wind Spd & Pollutant Conc. Class						
Wind Speed	m/s	0.3 ≤ WS < 1.4	1.4 ≤ WS < 3.1	3.1 ≤ WS < 7.8	7.8 ≤ WS < 10.8	10.8 ≤ WS < 13.6	WS ≥ 13.6	
SO <sub>2</sub>	ppb	0 ≤ C < 1	1 ≤ C < 5	5 ≤ C < 10	10 ≤ C < 57	57 ≤ C < 172	C ≥ 172	
NO <sub>2</sub>	ppb	0 ≤ C < 5	5 ≤ C < 15	15 ≤ C < 30	30 ≤ C < 100	100 ≤ C < 212	C ≥ 212	
H <sub>2</sub> S	ppb	0 ≤ C < 1	1 ≤ C < 3.6	3.6 ≤ C < 5	5 ≤ C < 8	8 ≤ C < 10.8	C ≥ 10.8	
PM <sub>2.5</sub>	ug/m <sup>3</sup>	0 ≤ C < 2	2 ≤ C < 4	4 ≤ C < 10	10 ≤ C < 20	20 ≤ C < 30	C ≥ 30	

## Monthly Update

- \*All data has been slope, intercept, and baseline corrected. Data may change after validation process.
- \*All compliance parameters were within the Saskatchewan Ambient Air Quality Standards.
- \*All compliance parameters had greater than 90% operational uptime with the exception of NO, NO<sub>2</sub> and NO<sub>x</sub>.
- \*42 hours of data flagged as "analyzer failure" due to an issue with overheating causing intermittent power interruptions throughout the month.
- \*Routine quarterly calibrations were completed on Sept 22.

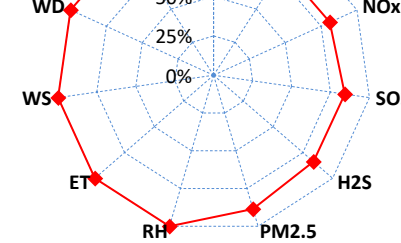
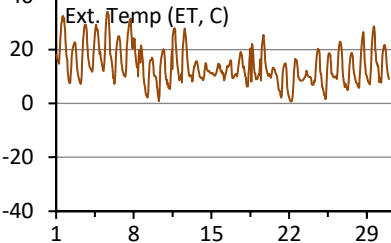
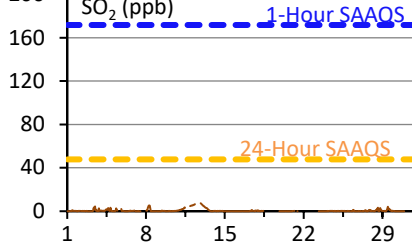
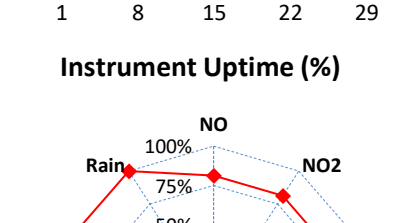
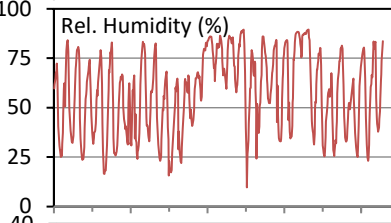
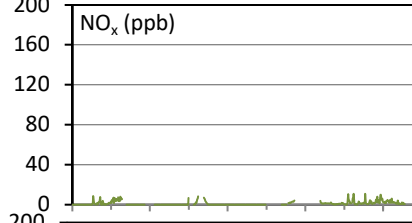
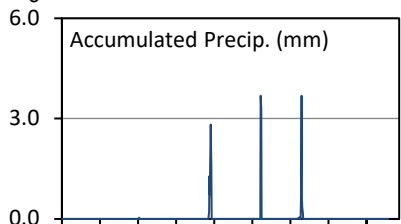
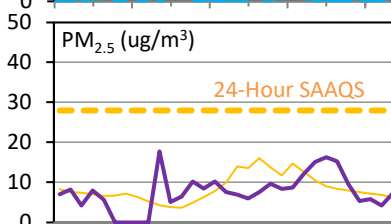
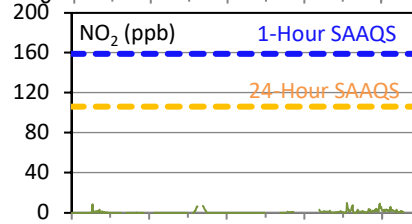
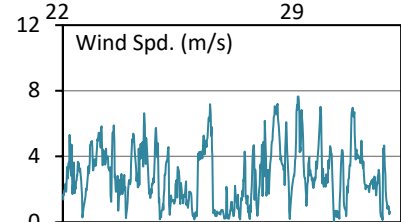
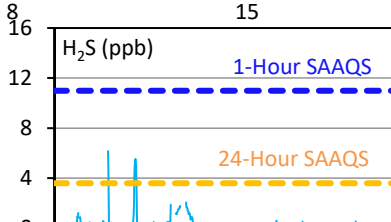
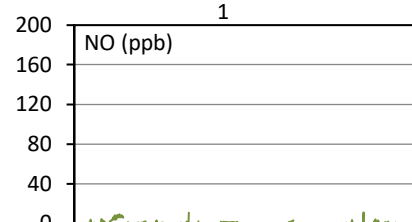
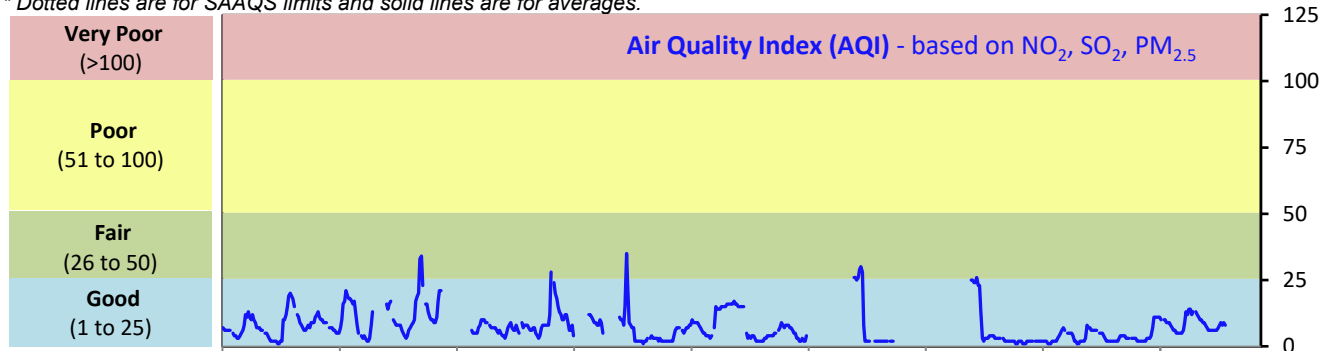
# SESAA Stoughton Station - September 2022 Summary Report

Pollutants		Month Records		24-Hour Records				1-Hour Records			
Name	Conc. Unit	Avg. Conc.	Uptime	Maximum		SAAQS Standard	Exceed Days	Maximum		SAAQS Standard	Exceed Hours
				Conc.	Time			Conc.	Time		
NO	ppb	0.8	81.2%	4.1	Sep-4	-	-	11.4	Sep-27 09:00	-	-
NO <sub>2</sub>	ppb	0.7	81.2%	2.9	Sep-28	106	0	9.8	Sep-25 20:00	159	0
NO <sub>x</sub>	ppb	1.1	81.2%	3.8	Sep-28	-	-	11.1	Sep-27 09:00	-	-
SO <sub>2</sub>	ppb	0.6	84.1%	2.1	Sep-13	48	0	7.6	Sep-12 20:00	172	0
H <sub>2</sub> S	ppb	0.2	83.9%	0.3	Sep-3	3.6	0	6.2	Sep-05 19:00	11	0
PM <sub>2.5</sub>	ug/m <sup>3</sup>	10	88.6%	17	Sep-23	28	0	50	Sep-13 01:00	-	-

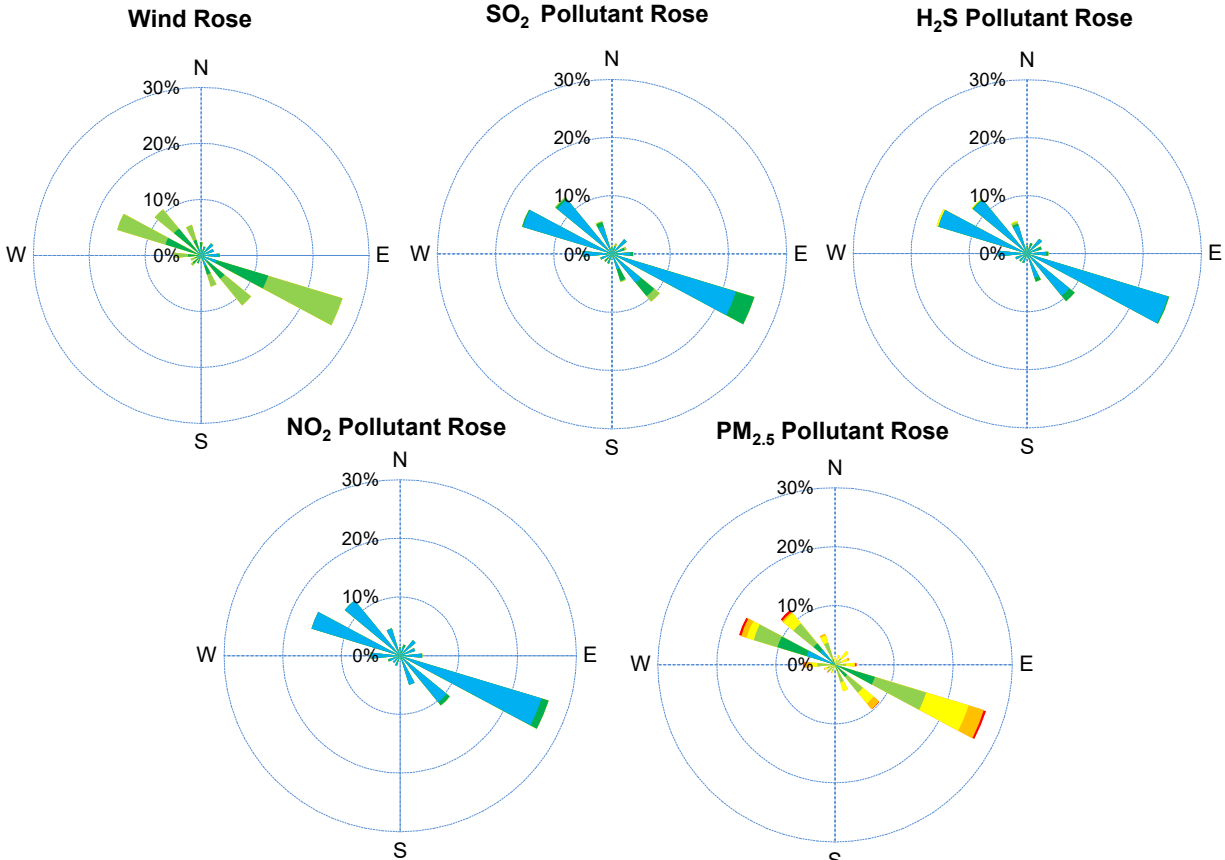
SAAQS: Saskatchewan Ambient Air Quality Standards

\* Air Quality Standard refers to Saskatchewan Ambient Air Quality Standards (SAAQS).

\* Dotted lines are for SAAQS limits and solid lines are for averages.



# SESAA Stoughton Station - September 2022 Summary Report



Parameters	Unit	Color Code for Wind Spd & Pollutant Conc. Class						
Wind Speed	m/s	0.3 ≤ WS < 1.4	1.4 ≤ WS < 3.1	3.1 ≤ WS < 7.8	7.8 ≤ WS < 10.8	10.8 ≤ WS < 13.6	WS ≥ 13.6	
SO <sub>2</sub>	ppb	0 ≤ C < 1	1 ≤ C < 5	5 ≤ C < 10	10 ≤ C < 57	57 ≤ C < 172	C ≥ 172	
NO <sub>2</sub>	ppb	0 ≤ C < 5	5 ≤ C < 15	15 ≤ C < 30	30 ≤ C < 100	100 ≤ C < 212	C ≥ 212	
H <sub>2</sub> S	ppb	0 ≤ C < 1	1 ≤ C < 3.6	3.6 ≤ C < 5	5 ≤ C < 8	8 ≤ C < 10.8	C ≥ 10.8	
PM <sub>2.5</sub>	ug/m <sup>3</sup>	0 ≤ C < 2	2 ≤ C < 4	4 ≤ C < 10	10 ≤ C < 20	20 ≤ C < 30	C ≥ 30	

## Monthly Update

- \*All data has been slope, intercept, and baseline corrected. Data may change after validation process.
- \*All compliance parameters were within the Saskatchewan Ambient Air Quality Standards.
- \*All compliance parameters had less than 90% operational uptime due to intermittent power interruptions throughout the month.
- The NOx analyzer was replaced during the calibration.
- \*Routine quarterly calibrations were completed on Sept 19.



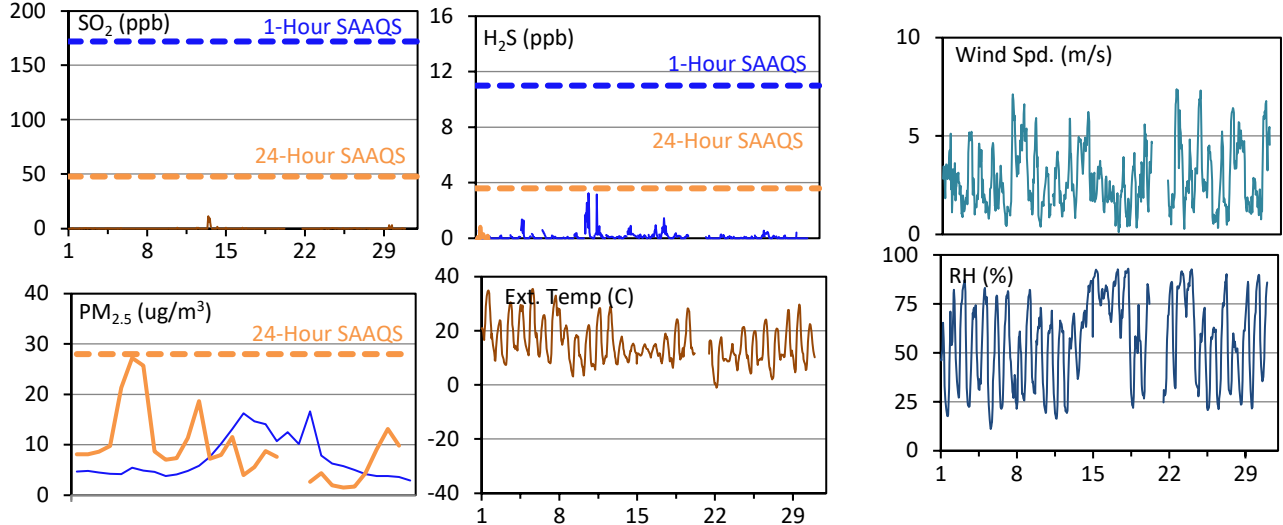
## SESAA Torquay Station - September 2022 Summary Report

Pollutants		Month Records		24-Hour Records				1-Hour Records			
Name	Conc. Unit	Avg. Conc.	Uptime	Maximum		SAAQS Standard	Exceed Days	Maximum		SAAQS Standard	Exceed Hours
				Conc.	Time			Conc.	Time		
SO <sub>2</sub>	ppb	0.1	95.6%	1.6	Sep-13	48	0	11.5	Sep-13 10:00	172	0
H <sub>2</sub> S	ppb	0.1	95.6%	0.8	Sep-11	3.6	0	3.2	Sep-11 04:00	11	0
PM <sub>2.5</sub>	ug/m3	10	95.8%	27	Sep-6	28	0	188	Sep-06 17:00	-	-

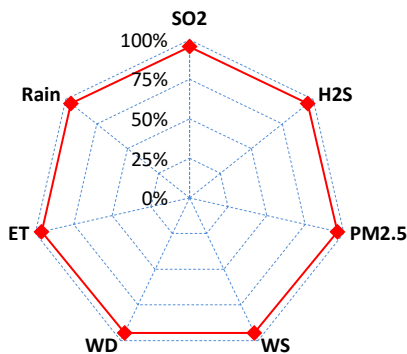
SAAQS: Saskatchewan Ambient Air Quality Standards

\* Air Quality Standard refers to Saskatchewan Ambient Air Quality Standards (SAAQS).

\* Dotted lines are for SAAQS limits and solid lines are for averages.



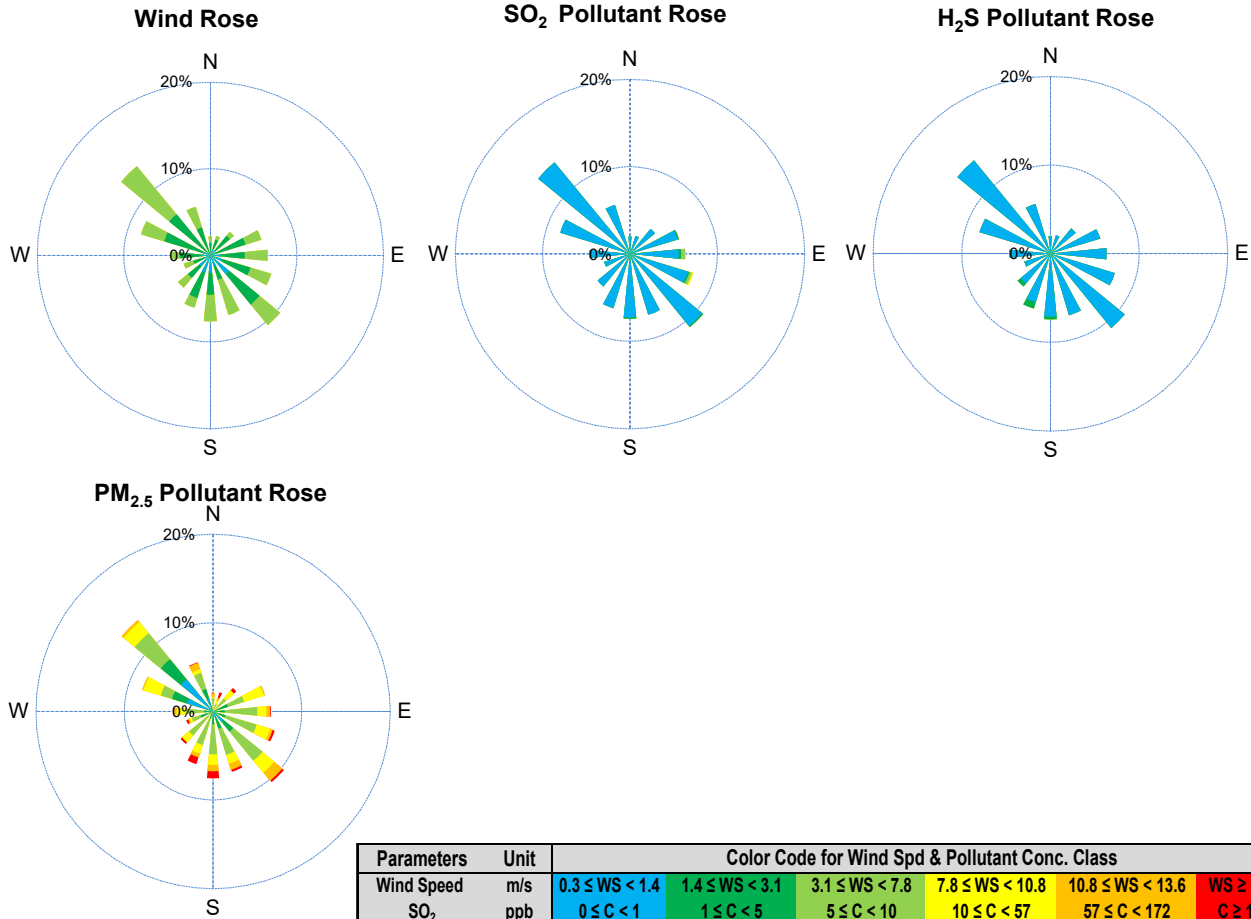
### Instrument Uptime (%)



## Monthly Update

- \*All data has been slope, intercept, and baseline corrected. Data may change after validation process.
- \*All compliance parameters were within the Saskatchewan Ambient Air Quality Standards.
- \*All compliance parameters had greater than 90% operational uptime.
- \* 30 hours of data flagged as "power failure" for all parameters due to issues with an electronic board.
- \*Routine quarterly calibrations were completed on Sept 21.

# SESAA Torquay Station - September 2022 Summary Report



Parameters	Unit	Color Code for Wind Spd & Pollutant Conc. Class					
		0.3 ≤ WS < 1.4	1.4 ≤ WS < 3.1	3.1 ≤ WS < 7.8	7.8 ≤ WS < 10.8	10.8 ≤ WS < 13.6	WS ≥ 13.6
Wind Speed	m/s	0.3 ≤ WS < 1.4	1.4 ≤ WS < 3.1	3.1 ≤ WS < 7.8	7.8 ≤ WS < 10.8	10.8 ≤ WS < 13.6	WS ≥ 13.6
SO <sub>2</sub>	ppb	0 ≤ C < 1	1 ≤ C < 5	5 ≤ C < 10	10 ≤ C < 57	57 ≤ C < 172	C ≥ 172
NO <sub>2</sub>	ppb	0 ≤ C < 5	5 ≤ C < 15	15 ≤ C < 30	30 ≤ C < 100	100 ≤ C < 212	C ≥ 212
O <sub>3</sub>	ppb	0 ≤ C < 10	10 ≤ C < 20	20 ≤ C < 40	40 ≤ C < 60	60 ≤ C < 82	C ≥ 82
H <sub>2</sub> S	ppb	0 ≤ C < 1	1 ≤ C < 3.6	3.6 ≤ C < 5	5 ≤ C < 8	8 ≤ C < 10.8	C ≥ 10.8
PM <sub>2.5</sub>	ug/m <sup>3</sup>	0 ≤ C < 2	2 ≤ C < 4	4 ≤ C < 10	10 ≤ C < 20	20 ≤ C < 30	C ≥ 30

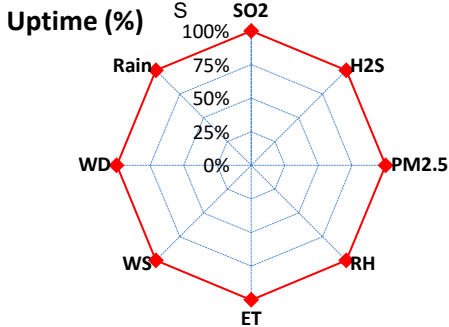
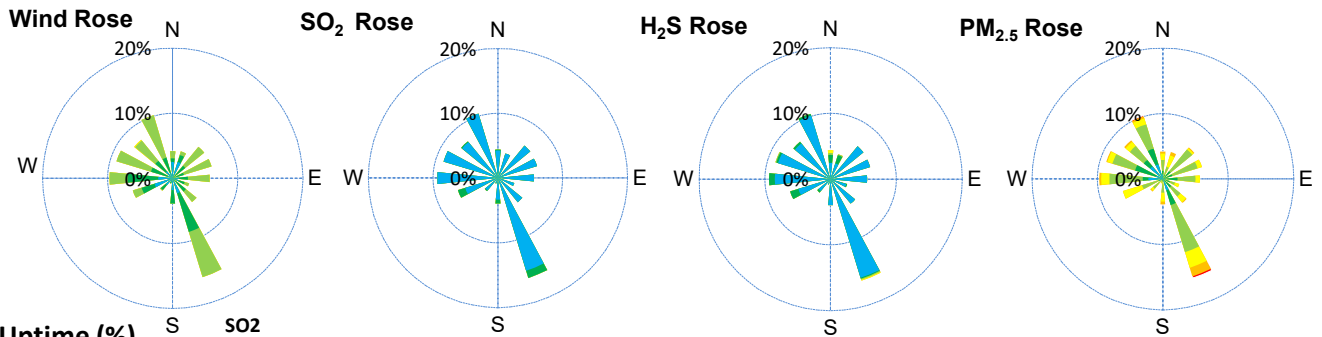
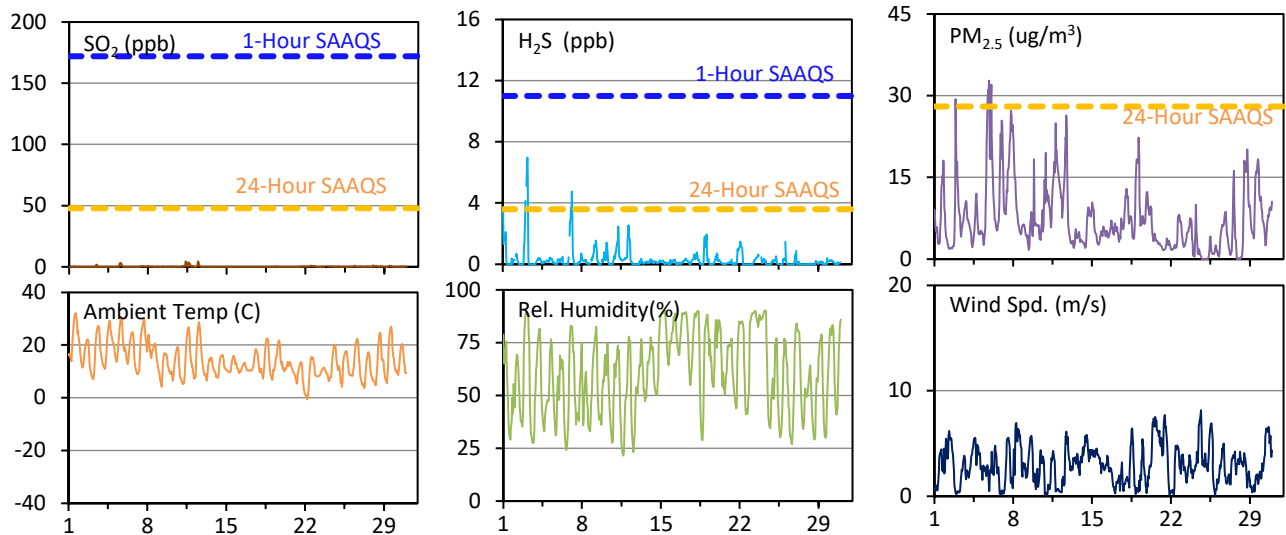
# SESAA Wauchope Station - September 2022 Summary Report

Pollutants		Month Records		24-Hour Records				1-Hour Records			
Name	Conc. Unit	Avg. Conc.	Uptime	Maximum		SAAQS Objective	Exceed Days	Maximum		SAAQS Objective	Exceed Hours
				Conc.	Time			Conc.	Time		
SO <sub>2</sub>	ppb	0.2	100.0%	1.3	Sep-11	48	0	4.5	Sep-12 11:00	172	0
H <sub>2</sub> S	ppb	0.3	100.0%	0.9	Sep-7	3.6	0	7.0	Sep-03 04:00	11	0
PM <sub>2.5</sub>	ug/m <sup>3</sup>	7	100.0%	17	Sep-7	28	0	33	Sep-05 20:00	-	-

SAAQS: Saskatchewan Ambient Air Quality Standards

\* Air Quality Standard refers to Saskatchewan Ambient Air Quality Standards (SAAQS).

\* Dotted lines are for SAAQS limits and solid lines are for averages.



Parameters	Unit	Color Code for Wind Spd & Pollutant Conc. Class					
Wind Speed	m/s	0.3 ≤ WS < 1.4	1.4 ≤ WS < 3.1	3.1 ≤ WS < 7.8	7.8 ≤ WS < 10.8	10.8 ≤ WS < 13.6	WS ≥ 13.6
SO <sub>2</sub>	ppb	0 ≤ C < 1	1 ≤ C < 5	5 ≤ C < 10	10 ≤ C < 57	57 ≤ C < 172	C ≥ 172
H <sub>2</sub> S	ppb	0 ≤ C < 1	1 ≤ C < 3.6	3.6 ≤ C < 5	5 ≤ C < 8	8 ≤ C < 10.8	C ≥ 10.8
PM <sub>2.5</sub>	ug/m <sup>3</sup>	0 ≤ C < 2	2 ≤ C < 4	4 ≤ C < 10	10 ≤ C < 20	20 ≤ C < 30	C ≥ 30

## Monthly Update

\*All data has been slope, intercept, and baseline corrected. Data may change after validation process.

\*All compliance parameters were within the Saskatchewan Ambient Air Quality Standards.

\*All compliance parameters were greater than 90% operational.

\*Routine quarterly calibrations were completed on Sept 23.

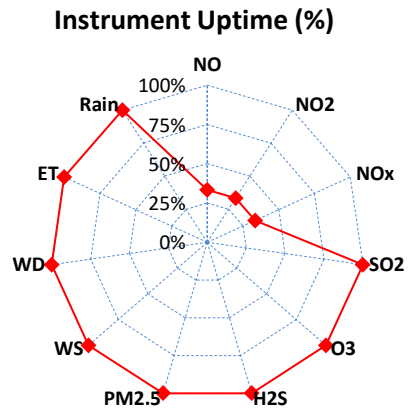
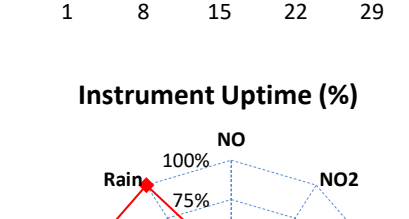
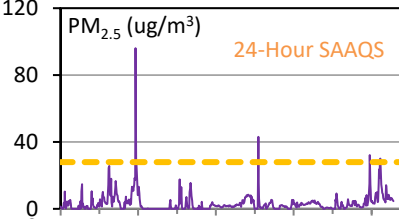
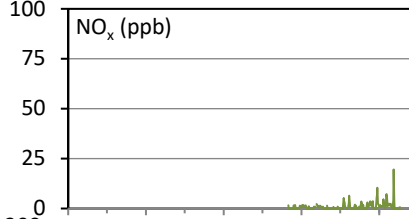
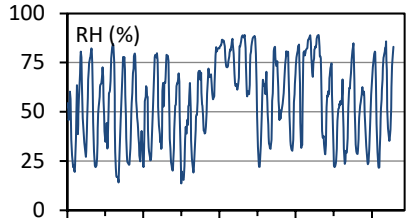
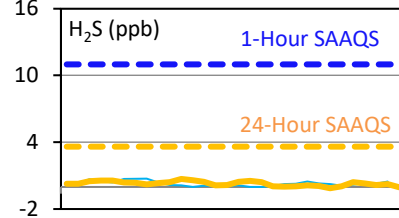
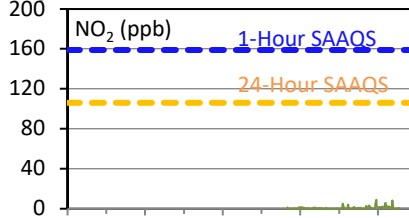
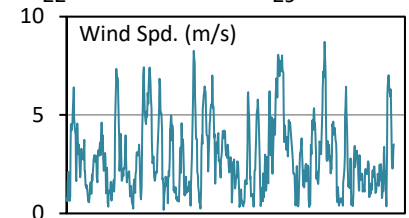
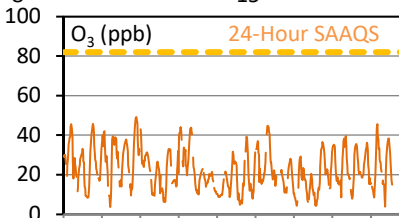
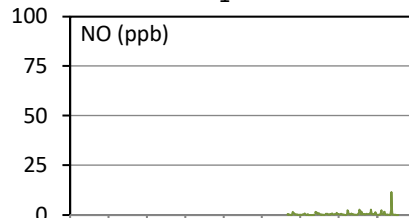
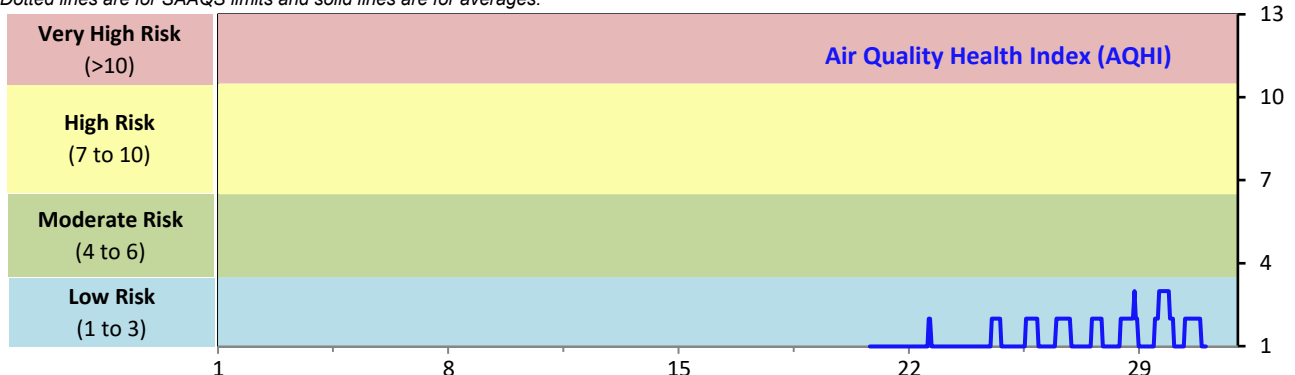
# SESAA Weyburn Station - September 2022 Summary Report

Pollutants		Month Records		24-Hour Records				1-Hour Records			
Name	Conc. Unit	Avg. Conc.	Uptime	Maximum		SAAQS Standard	Exceed Days	Maximum		SAAQS Standard	Exceed Hours
				Conc.	Time			Conc.	Time		
NO	ppb	0.4	33.4%	0.7	Sep-27	-	-	11.5	Sep-30 07:00	-	-
NO <sub>2</sub>	ppb	0.7	33.4%	1.6	Sep-29	106	0	9.0	Sep-28 20:00	159	0
NO <sub>x</sub>	ppb	1.0	33.4%	2.1	Sep-29	-	-	19.6	Sep-30 07:00	-	-
SO <sub>2</sub>	ppb	1.3	100.0%	7.9	Sep-4	48	0	24.5	Sep-04 04:00	172	0
O <sub>3</sub>	ppb	23	100.0%	32	Sep-1	-	-	49	Sep-07 15:00	82	0
H <sub>2</sub> S	ppb	0.3	100.0%	0.7	Sep-11	3.6	0	3.2	Sep-17 03:00	11	0
PM <sub>2.5</sub>	ug/m <sup>3</sup>	3	100.0%	14	Sep-7	28	0	96	Sep-07 18:00	-	-

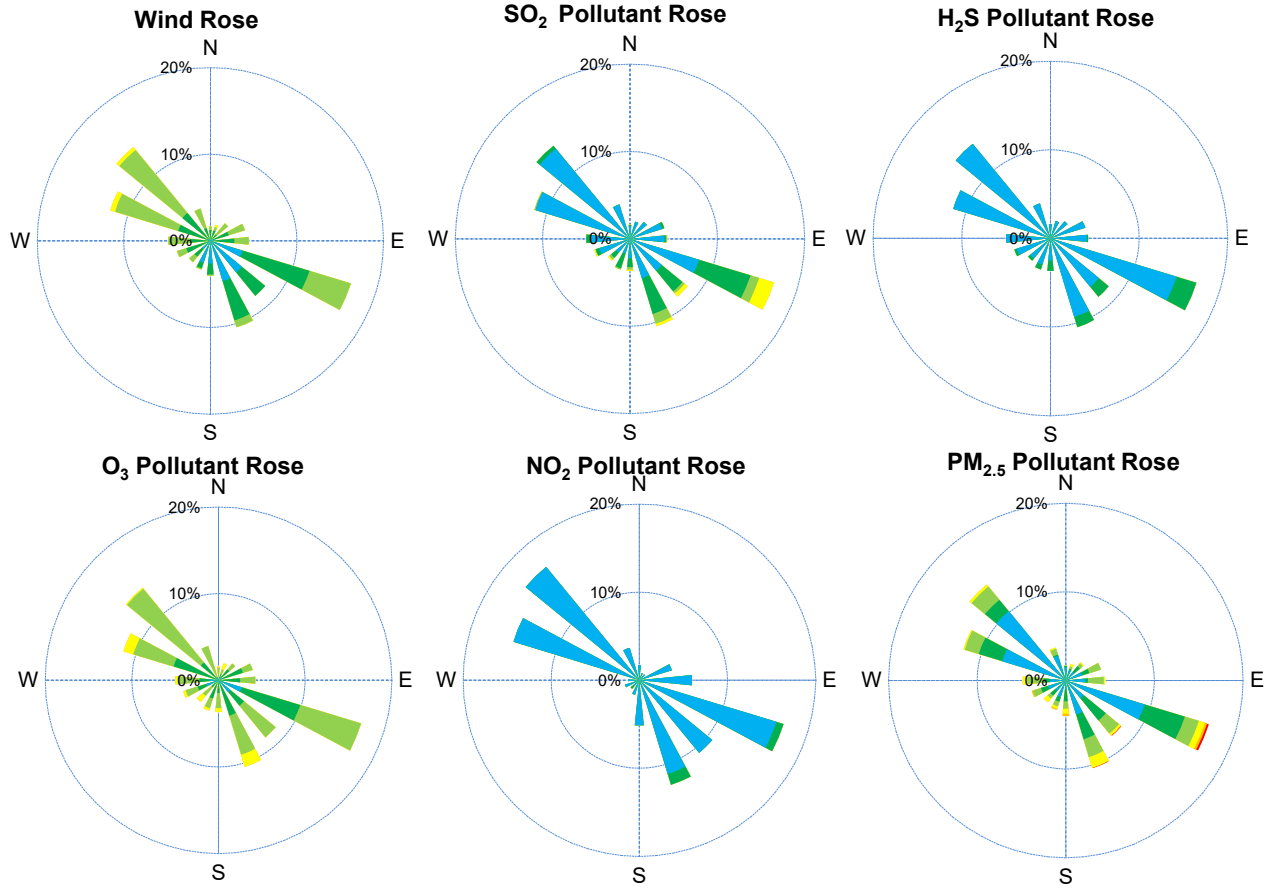
SAAQS: Saskatchewan Ambient Air Quality Standards

\* Air Quality Standard refers to Saskatchewan Ambient Air Quality Standards (SAAQS).

\* Dotted lines are for SAAQS limits and solid lines are for averages.



# SESAA Weyburn Station - September 2022 Summary Report



Parameters	Unit	Color Code for Wind Spd & Pollutant Conc. Class					
Wind Speed	m/s	$0.3 \leq WS < 1.4$	$1.4 \leq WS < 3.1$	$3.1 \leq WS < 7.8$	$7.8 \leq WS < 10.8$	$10.8 \leq WS < 13.6$	$WS \geq 13.6$
SO <sub>2</sub>	ppb	$0 \leq C < 1$	$1 \leq C < 5$	$5 \leq C < 10$	$10 \leq C < 57$	$57 \leq C < 172$	$C \geq 172$
NO <sub>2</sub>	ppb	$0 \leq C < 5$	$5 \leq C < 15$	$15 \leq C < 30$	$30 \leq C < 100$	$100 \leq C < 212$	$C \geq 212$
O <sub>3</sub>	ppb	$0 \leq C < 10$	$10 \leq C < 20$	$20 \leq C < 40$	$40 \leq C < 60$	$60 \leq C < 82$	$C \geq 82$
H <sub>2</sub> S	ppb	$0 \leq C < 1$	$1 \leq C < 3.6$	$3.6 \leq C < 5$	$5 \leq C < 8$	$8 \leq C < 10.8$	$C \geq 10.8$
PM <sub>2.5</sub>	ug/m <sup>3</sup>	$0 \leq C < 2$	$2 \leq C < 4$	$4 \leq C < 10$	$10 \leq C < 20$	$20 \leq C < 30$	$C \geq 30$

## Monthly Update

\*All data has been slope, intercept, and baseline corrected. Data may change after validation process.

\*All compliance parameters were within the Saskatchewan Ambient Air Quality Standards.

\*All compliance parameters were greater than 90% operational with the exception of NO, NO2 and NOx.

An issue with overheating caused intermittent power interruptions throughout the month.

\*Routine quarterly calibrations were completed on Sept 20.