

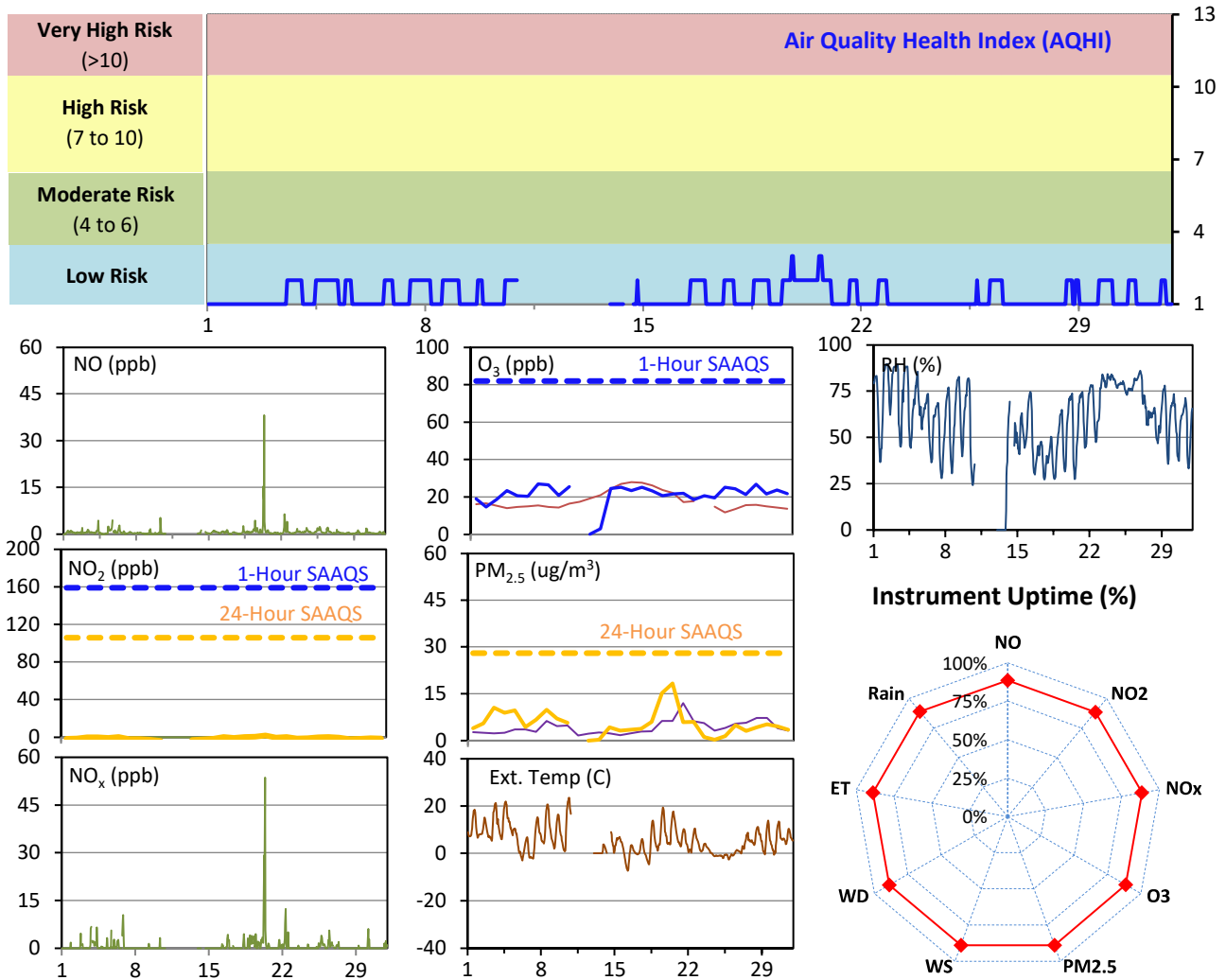
SESAA Esterhazy Station - October 2022 Summary Report

Pollutants		Month Records		24-Hour Records				1-Hour Records			
Name	Conc. Unit	Avg. Conc.	Uptime	Maximum		SAAQS Standard	Exceed Days	Maximum		SAAQS Standard	Exceed Hours
				Conc.	Time			Conc.	Time		
NO	ppb	0.6	88.5%	3.6	Oct-20	-	-	38.2	Oct-20 08:00	-	-
NO ₂	ppb	0.4	88.5%	2.0	Oct-20	106	0	15.6	Oct-20 08:00	159	0
NO _x	ppb	0.7	88.5%	1.5	Oct-19	-	-	53.6	Oct-20 08:00	-	-
O ₃	ppb	22	88.5%	27	Oct-7	-	-	42	Oct-04 14:00	82	0
PM _{2.5}	ug/m3	6	89.0%	18	Oct-20	28	0	26	Oct-19 19:00	-	-

SAAQS: Saskatchewan Ambient Air Quality Standards

* Air Quality Standard refers to Saskatchewan Ambient Air Quality Standards (SAAQS).

* Dotted lines are for SAAQS limits and solid lines are for averages.



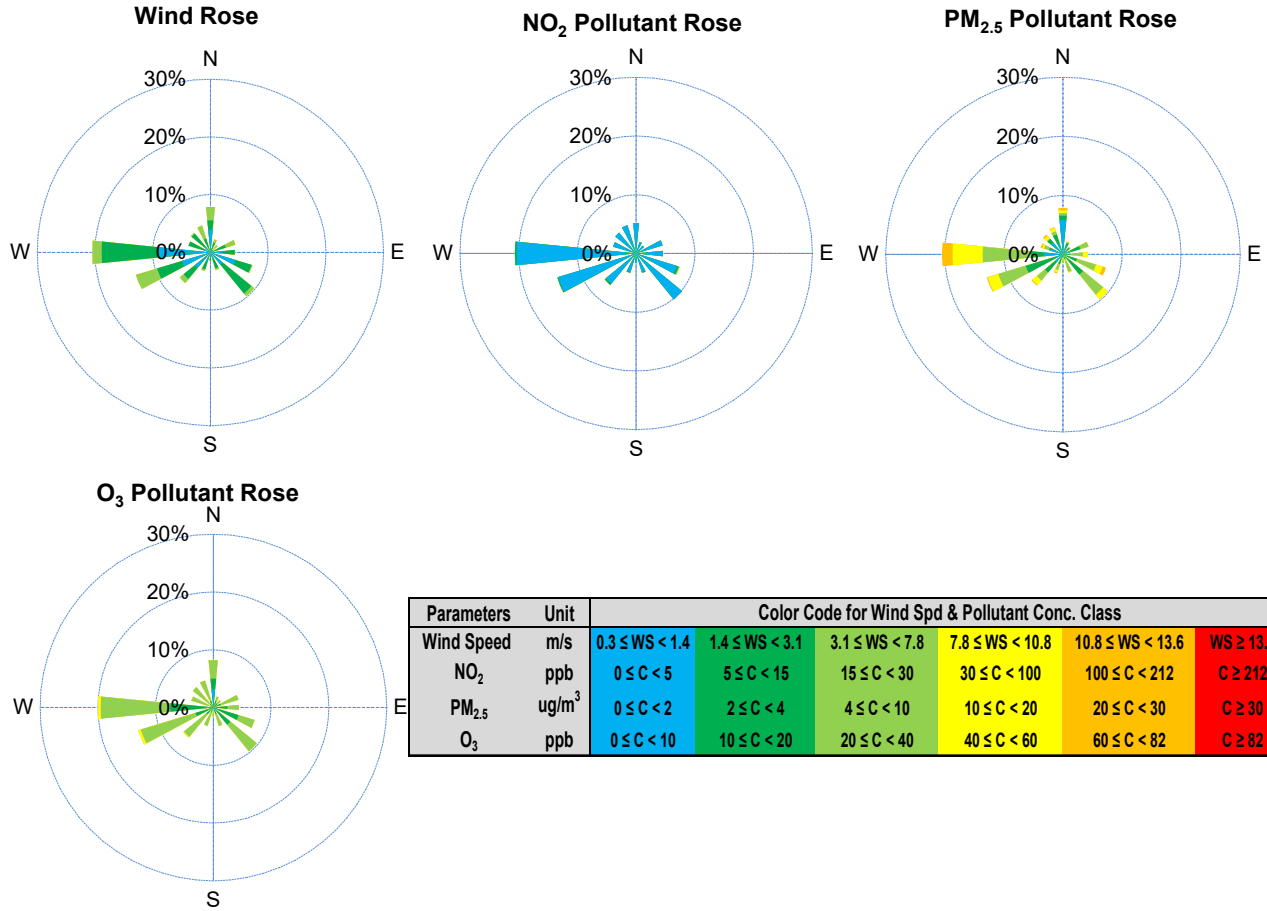
Monthly Update

*All data has been slope, intercept, and baseline corrected. Data may change after validation process.

*All compliance parameters were within the Saskatchewan Ambient Air Quality Standards.

*All compliance parameters were less than 90% operational due to an issue with the door hinges on the airpointer.

SESAA Esterhazy Station - October 2022 Summary Report



Parameters	Unit	Color Code for Wind Spd & Pollutant Conc. Class					
		0.3 ≤ WS < 1.4	1.4 ≤ WS < 3.1	3.1 ≤ WS < 7.8	7.8 ≤ WS < 10.8	10.8 ≤ WS < 13.6	WS ≥ 13.6
Wind Speed	m/s	0 ≤ C < 5	5 ≤ C < 15	15 ≤ C < 30	30 ≤ C < 100	100 ≤ C < 212	C ≥ 212
NO ₂	ppb	0 ≤ C < 2	2 ≤ C < 4	4 ≤ C < 10	10 ≤ C < 20	20 ≤ C < 30	C ≥ 30
PM _{2.5}	ug/m ³	0 ≤ C < 10	10 ≤ C < 20	20 ≤ C < 40	40 ≤ C < 60	60 ≤ C < 82	C ≥ 82
O ₃	ppb	0 ≤ C < 10	10 ≤ C < 20	20 ≤ C < 40	40 ≤ C < 60	60 ≤ C < 82	C ≥ 82

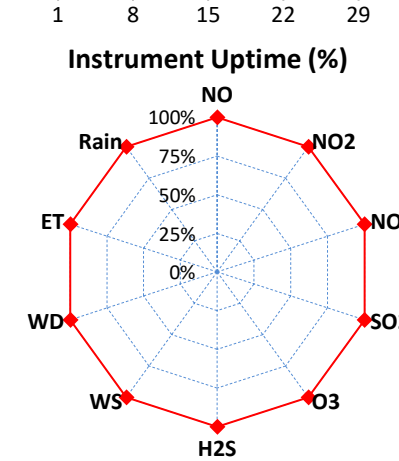
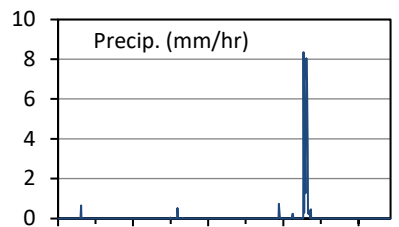
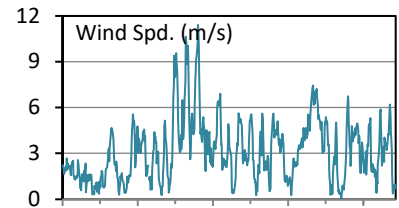
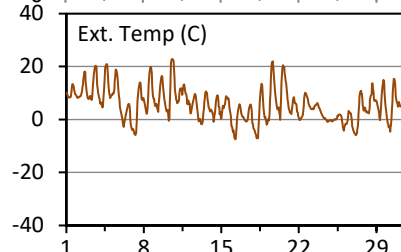
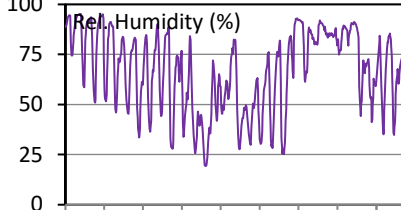
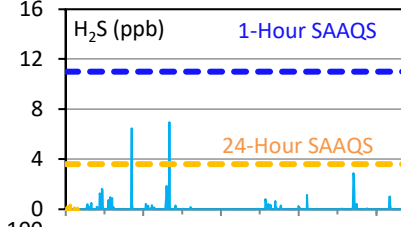
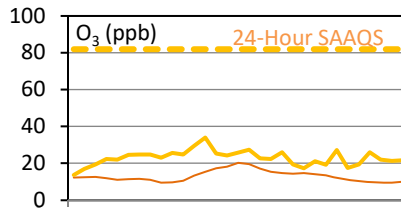
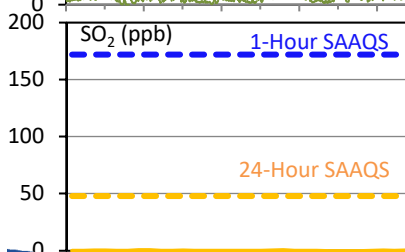
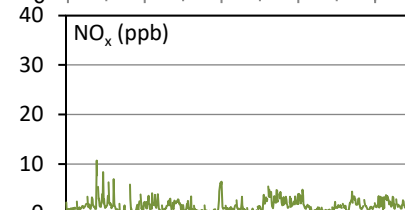
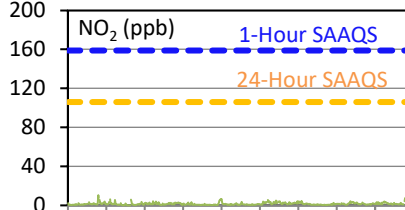
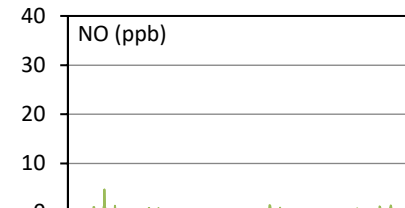
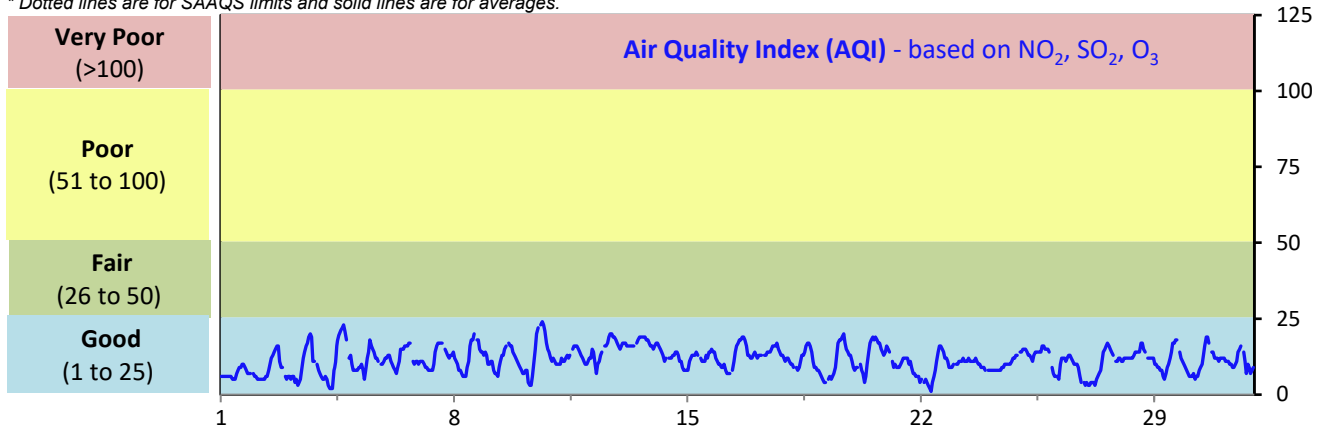
SESAA Glen Ewen Station - October 2022 Summary Report

Pollutants		Month Records		24-Hour Records				1-Hour Records			
Name	Conc. Unit	Avg. Conc.	Uptime	Maximum		SAAQS Standard	Exceed Days	Maximum		SAAQS Standard	Exceed Hours
				Conc.	Time			Conc.	Time		
NO	ppb	0.2	100.0%	0.6	Oct-4	-	-	4.8	Oct-04 08:00	-	-
NO ₂	ppb	1.4	100.0%	2.7	Oct-19	106	0	10.4	Oct-03 18:00	159	0
NO _x	ppb	1.6	100.0%	3.0	Oct-19	-	-	10.7	Oct-03 18:00	-	-
SO ₂	ppb	0.1	100.0%	0.6	Oct-08	48	0	5.3	Oct-20 16:00	172	0
O ₃	ppb	23	100.0%	34	Oct-13	-	-	48	Oct-10 15:00	82	0
H ₂ S	ppb	0.1	100.0%	0.3	Oct-10	3.6	0	7.0	Oct-10 08:00	11	0

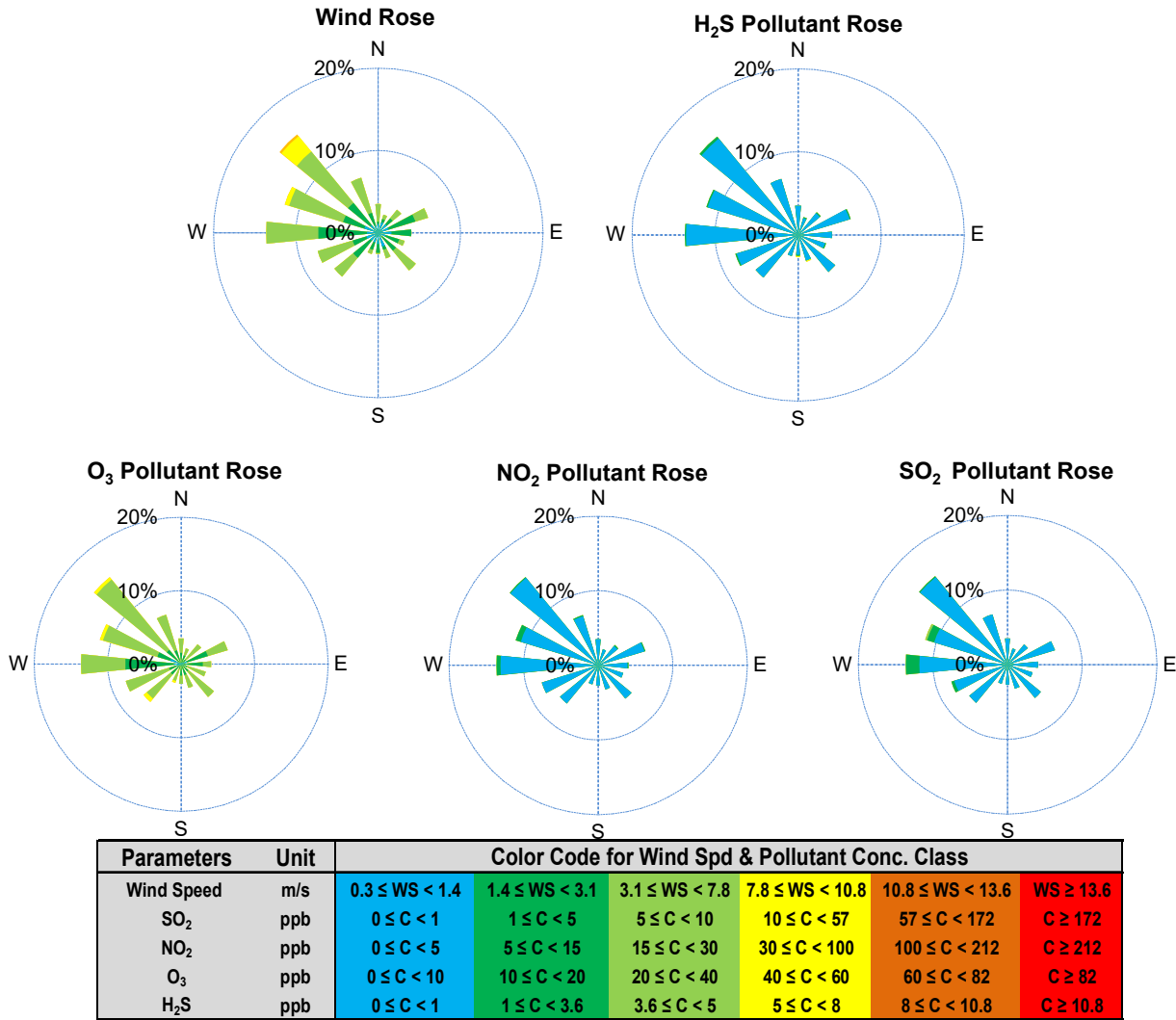
SAAQS: Saskatchewan Ambient Air Quality Standards

* Air Quality Standard refers to Saskatchewan Ambient Air Quality Standards (SAAQS).

* Dotted lines are for SAAQS limits and solid lines are for averages.



SESAA Glen Ewen Station - October 2022 Summary Report



Monthly Update

*All data has been slope, intercept, and baseline corrected. Data may change after validation process.

*All compliance parameters were within the Saskatchewan Ambient Air Quality Standards.

*All compliance parameters were greater than 90% operational.

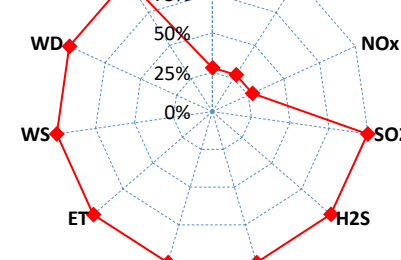
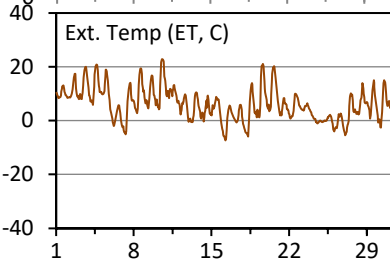
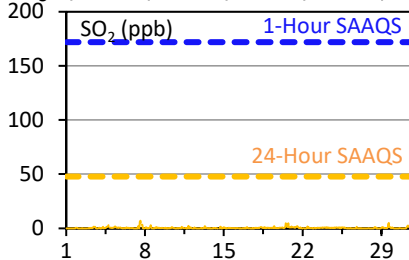
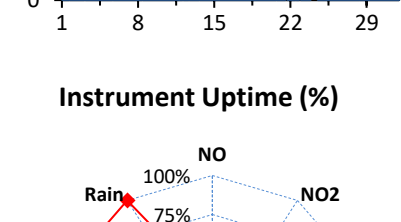
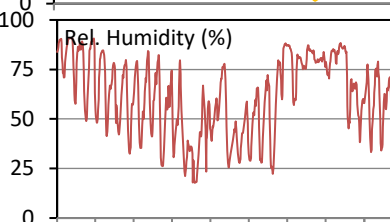
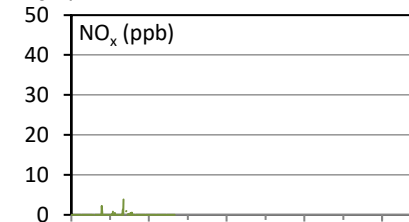
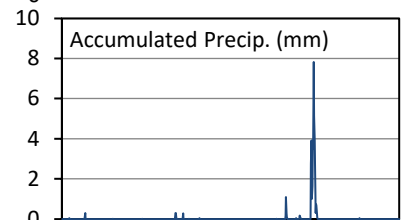
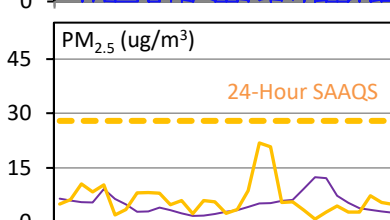
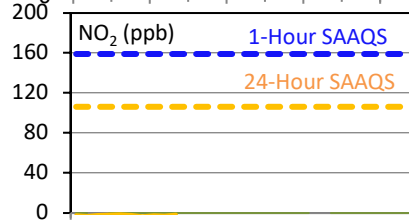
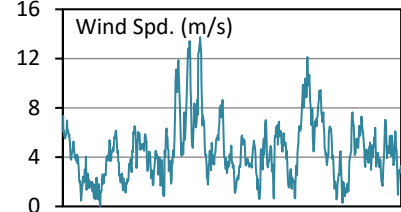
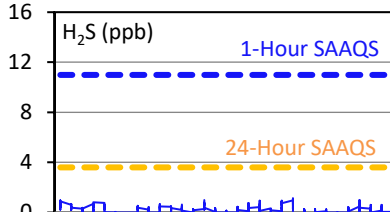
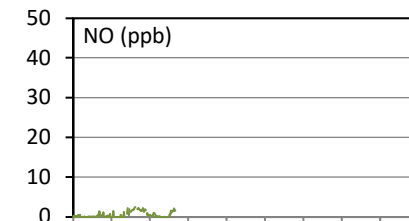
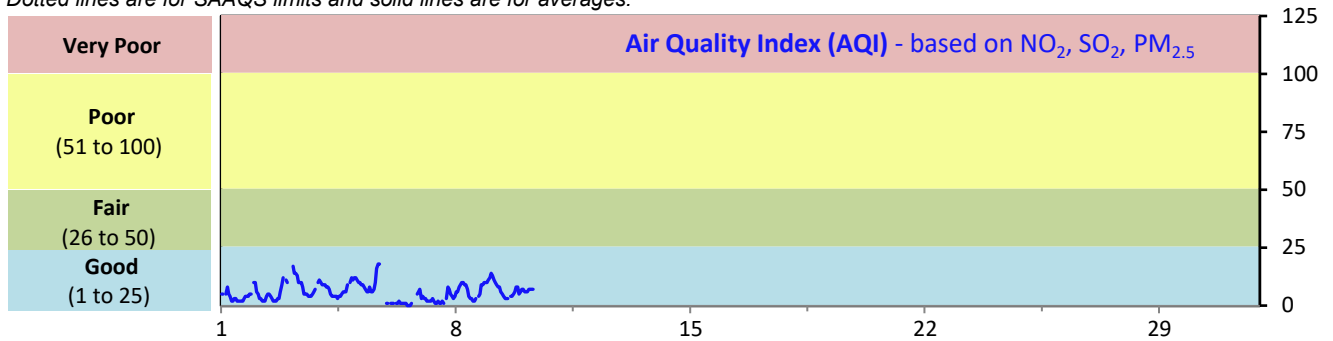
SESAA Oxbow Station - October 2022 Summary Report

Pollutants		Month Records		24-Hour Records				1-Hour Records			
Name	Conc. Unit	Avg. Conc.	Uptime	Maximum		SAAQS Standard	Exceed Days	Maximum		SAAQS Standard	Exceed Hours
				Conc.	Time			Conc.	Time		
NO	ppb	0.5	27.9%	1.7	Oct-6	-	-	2.5	Oct-06 15:00	-	-
NO ₂	ppb	< 0.1	27.9%	< 0.1	Aug-01	106	0	3.9	Oct-05 17:00	159	0
NO _x	ppb	0.1	27.9%	< 0.1	Aug-01	-	-	3.9	Oct-05 17:00	-	-
SO ₂	ppb	0.4	99.6%	1.4	Oct-20	48	0	7.1	Oct-07 14:00	172	0
H ₂ S	ppb	0.2	99.6%	0.7	Oct-22	3.6	0	1.2	Oct-22 02:00	11	0
PM _{2.5}	ug/m3	6	100.0%	22	Oct-19	28	0	49	Oct-19 23:00	-	-

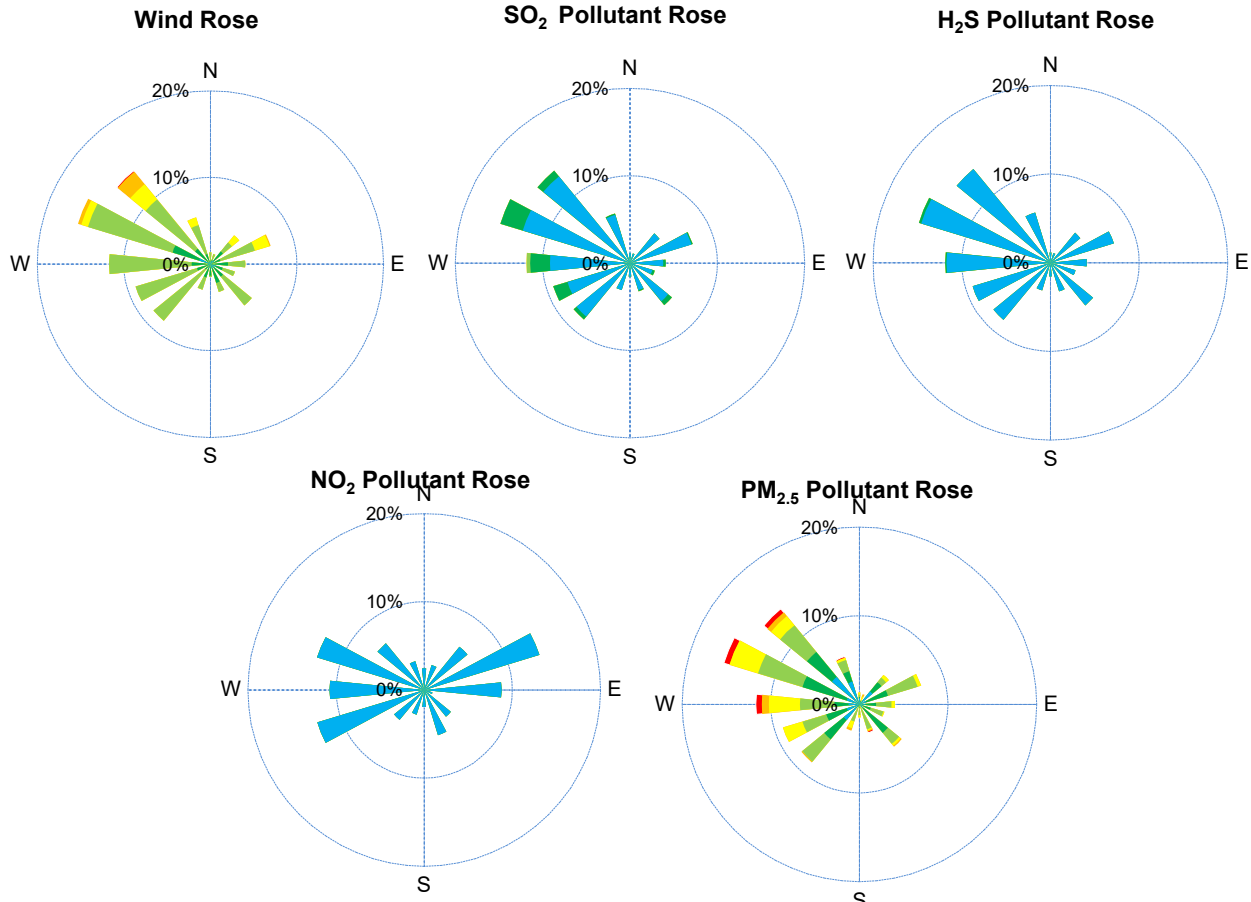
SAAQS: Saskatchewan Ambient Air Quality Standards

* Air Quality Standard refers to Saskatchewan Ambient Air Quality Standards (SAAQS).

* Dotted lines are for SAAQS limits and solid lines are for averages.



SESAA Oxbow Station - October 2022 Summary Report



Parameters	Unit	Color Code for Wind Spd & Pollutant Conc. Class						
Wind Speed	m/s	0.3 ≤ WS < 1.4	1.4 ≤ WS < 3.1	3.1 ≤ WS < 7.8	7.8 ≤ WS < 10.8	10.8 ≤ WS < 13.6	WS ≥ 13.6	
SO ₂	ppb	0 ≤ C < 1	1 ≤ C < 5	5 ≤ C < 10	10 ≤ C < 57	57 ≤ C < 172	C ≥ 172	
NO ₂	ppb	0 ≤ C < 5	5 ≤ C < 15	15 ≤ C < 30	30 ≤ C < 100	100 ≤ C < 212	C ≥ 212	
H ₂ S	ppb	0 ≤ C < 1	1 ≤ C < 3.6	3.6 ≤ C < 5	5 ≤ C < 8	8 ≤ C < 10.8	C ≥ 10.8	
PM _{2.5}	ug/m ³	0 ≤ C < 2	2 ≤ C < 4	4 ≤ C < 10	10 ≤ C < 20	20 ≤ C < 30	C ≥ 30	

Monthly Update

*All data has been slope, intercept, and baseline corrected. Data may change after validation process.

*All compliance parameters were within the Saskatchewan Ambient Air Quality Standards.

*All compliance parameters had greater than 90% operational uptime with the exception of NO, NO₂ and NO_x.

*530 hours of data flagged as "analyzer failure" due to an issue with the analyzer power board causing intermittent power interruptions throughout the month.

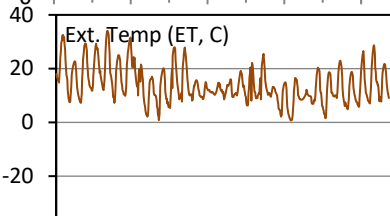
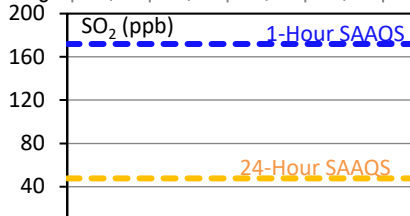
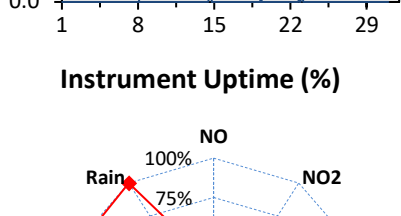
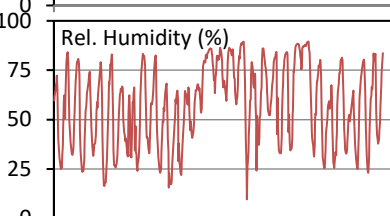
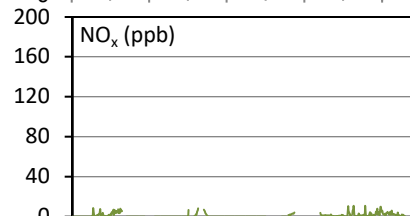
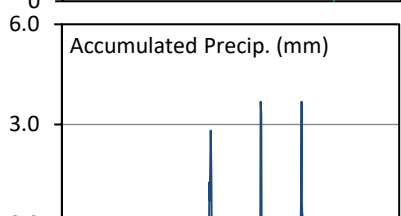
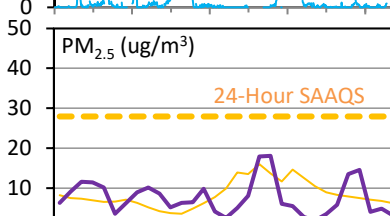
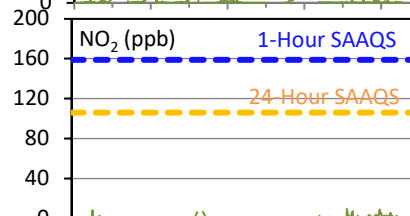
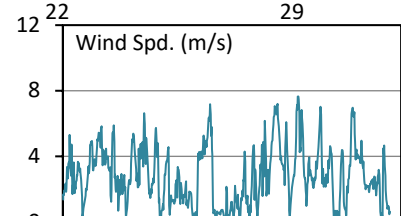
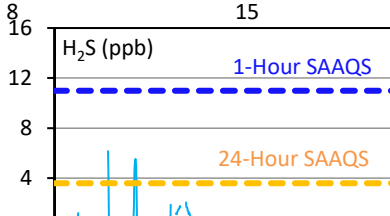
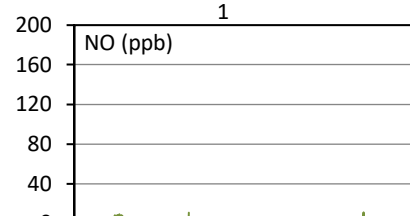
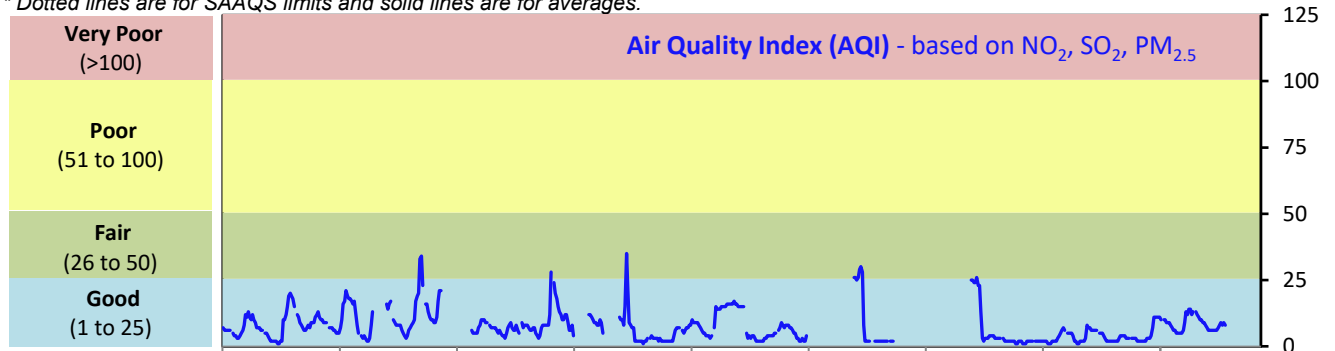
SESAA Stoughton Station - October 2022 Summary Report

Pollutants		Month Records		24-Hour Records				1-Hour Records			
Name	Conc. Unit	Avg. Conc.	Uptime	Maximum		SAAQS Standard	Exceed Days	Maximum		SAAQS Standard	Exceed Hours
				Conc.	Time			Conc.	Time		
NO	ppb	0.8	32.2%	0.6	Oct-31	-	-	11.4	Oct-27 09:00	-	-
NO ₂	ppb	0.7	32.2%	1.2	Oct-3	106	0	9.8	Oct-25 20:00	159	0
NO _x	ppb	1.1	32.2%	1.5	Oct-3	-	-	11.1	Oct-27 09:00	-	-
SO ₂	ppb	0.6	32.6%	1.5	Oct-6	48	0	7.6	Oct-12 20:00	172	0
H ₂ S	ppb	0.2	32.6%	0.5	Oct-4	3.6	0	6.2	Oct-05 19:00	11	0
PM _{2.5}	ug/m ³	10	100.0%	18	Oct-20	28	0	50	Oct-13 01:00	-	-

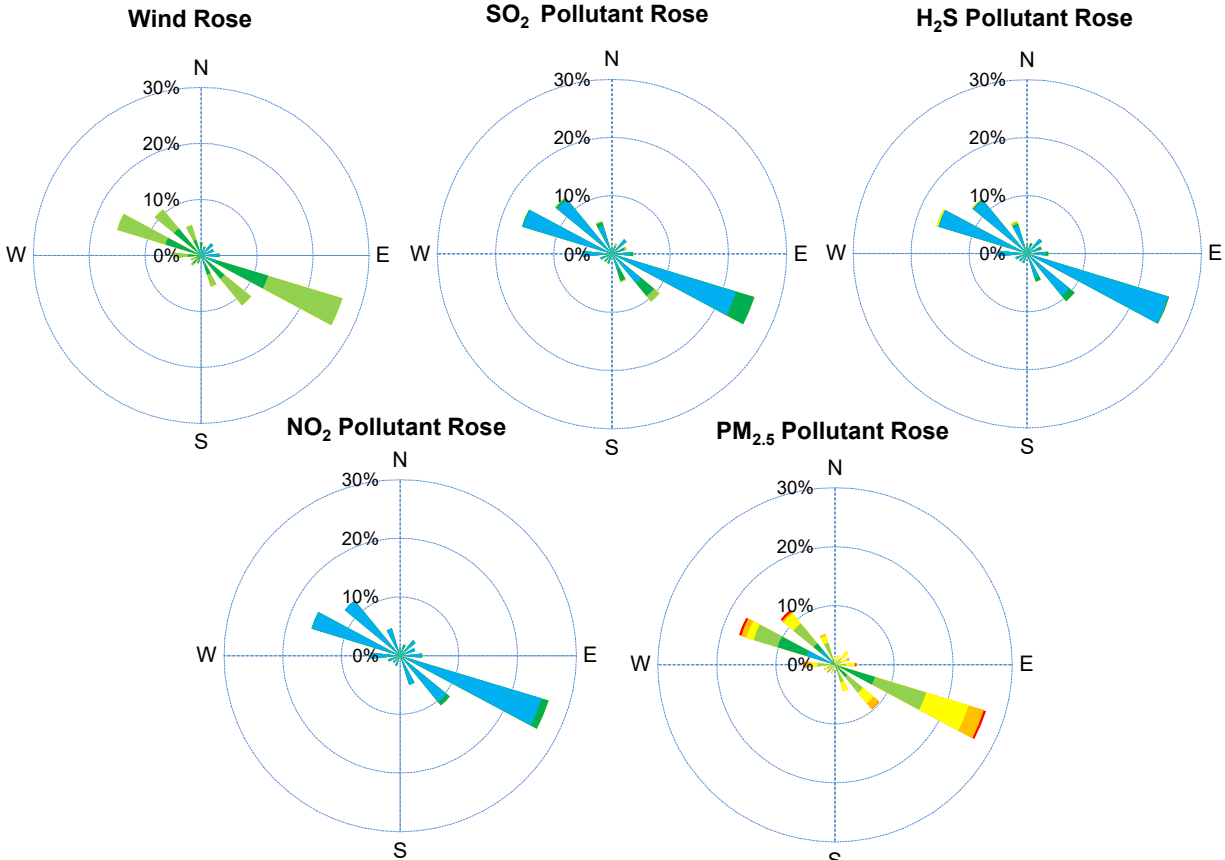
SAAQS: Saskatchewan Ambient Air Quality Standards

* Air Quality Standard refers to Saskatchewan Ambient Air Quality Standards (SAAQS).

* Dotted lines are for SAAQS limits and solid lines are for averages.



SESAA Stoughton Station - October 2022 Summary Report



Parameters	Unit	Color Code for Wind Spd & Pollutant Conc. Class						
Wind Speed	m/s	0.3 ≤ WS < 1.4	1.4 ≤ WS < 3.1	3.1 ≤ WS < 7.8	7.8 ≤ WS < 10.8	10.8 ≤ WS < 13.6	WS ≥ 13.6	
SO ₂	ppb	0 ≤ C < 1	1 ≤ C < 5	5 ≤ C < 10	10 ≤ C < 57	57 ≤ C < 172	C ≥ 172	
NO ₂	ppb	0 ≤ C < 5	5 ≤ C < 15	15 ≤ C < 30	30 ≤ C < 100	100 ≤ C < 212	C ≥ 212	
H ₂ S	ppb	0 ≤ C < 1	1 ≤ C < 3.6	3.6 ≤ C < 5	5 ≤ C < 8	8 ≤ C < 10.8	C ≥ 10.8	
PM _{2.5}	ug/m ³	0 ≤ C < 2	2 ≤ C < 4	4 ≤ C < 10	10 ≤ C < 20	20 ≤ C < 30	C ≥ 30	

Monthly Update

*All data has been slope, intercept, and baseline corrected. Data may change after validation process.

*All compliance parameters were within the Saskatchewan Ambient Air Quality Standards.

*All compliance parameters had less than 90% operational uptime with the exception of PM_{2.5} due to intermittent power interruptions throughout the month.

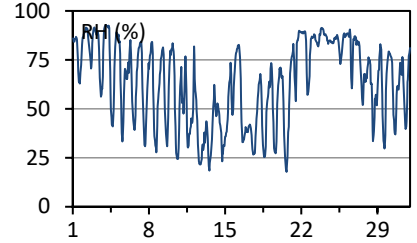
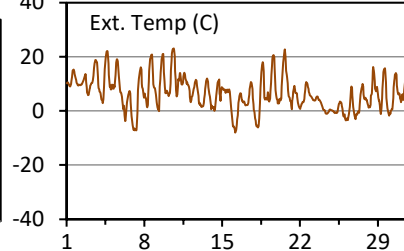
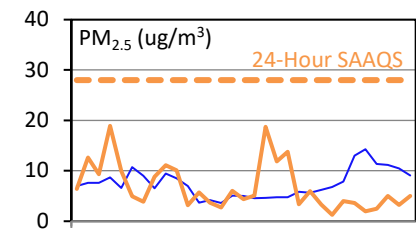
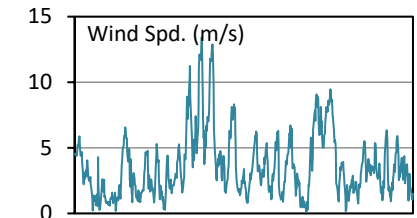
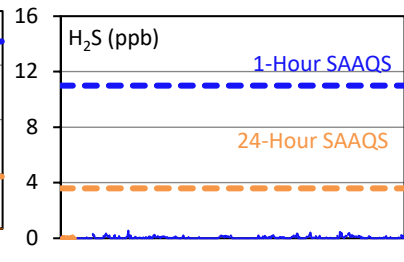
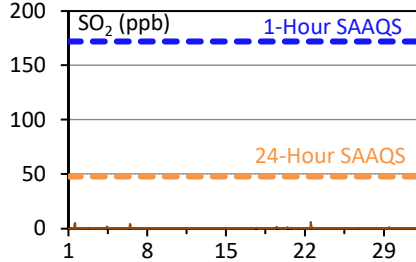
SESAA Torquay Station - October 2022 Summary Report

Pollutants		Month Records		24-Hour Records				1-Hour Records			
				Maximum		SAAQS	Exceed	Maximum		SAAQS	Exceed
Name	Conc. Unit	Avg. Conc.	Uptime	Conc.	Time			Standard	Days		
SO ₂	ppb	0.1	100.0%	0.4	Oct-22	48	0	6.1	Oct-22 12:00	172	0
H ₂ S	ppb	<0.1	100.0%	0.1	Oct-26	3.6	0	0.5	Oct-07 02:00	11	0
PM _{2.5}	ug/m3	7	100.0%	19	Oct-4	28	0	192	Oct-18 19:00	-	-

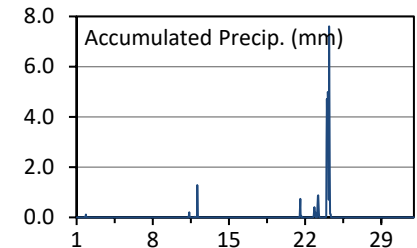
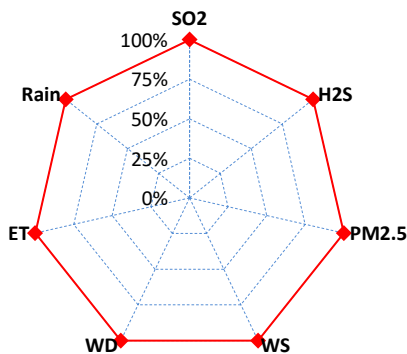
SAAQS: Saskatchewan Ambient Air Quality Standards

* Air Quality Standard refers to Saskatchewan Ambient Air Quality Standards (SAAQS).

* Dotted lines are for SAAQS limits and solid lines are for averages.



Instrument Uptime (%)



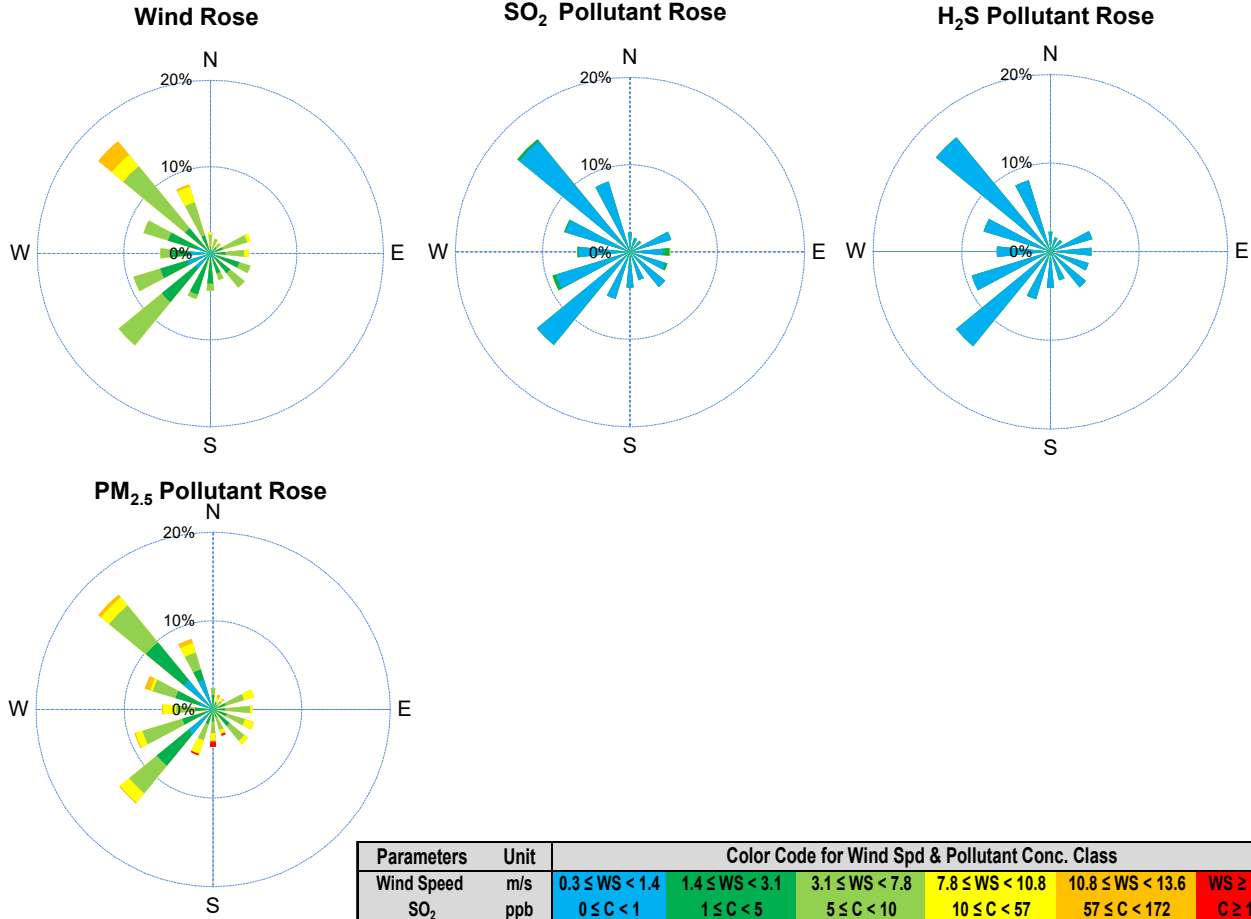
Monthly Update

*All data has been slope, intercept, and baseline corrected. Data may change after validation process.

*All compliance parameters were within the Saskatchewan Ambient Air Quality Standards.

*All compliance parameters had greater than 90% operational uptime.

SESAA Torquay Station - October 2022 Summary Report



Parameters	Unit	Color Code for Wind Spd & Pollutant Conc. Class					
Wind Speed	m/s	$0.3 \leq WS < 1.4$	$1.4 \leq WS < 3.1$	$3.1 \leq WS < 7.8$	$7.8 \leq WS < 10.8$	$10.8 \leq WS < 13.6$	$WS \geq 13.6$
SO ₂	ppb	$0 \leq C < 1$	$1 \leq C < 5$	$5 \leq C < 10$	$10 \leq C < 57$	$57 \leq C < 172$	$C \geq 172$
NO ₂	ppb	$0 \leq C < 5$	$5 \leq C < 15$	$15 \leq C < 30$	$30 \leq C < 100$	$100 \leq C < 212$	$C \geq 212$
O ₃	ppb	$0 \leq C < 10$	$10 \leq C < 20$	$20 \leq C < 40$	$40 \leq C < 60$	$60 \leq C < 82$	$C \geq 82$
H ₂ S	ppb	$0 \leq C < 1$	$1 \leq C < 3.6$	$3.6 \leq C < 5$	$5 \leq C < 8$	$8 \leq C < 10.8$	$C \geq 10.8$
PM _{2.5}	ug/m ³	$0 \leq C < 2$	$2 \leq C < 4$	$4 \leq C < 10$	$10 \leq C < 20$	$20 \leq C < 30$	$C \geq 30$

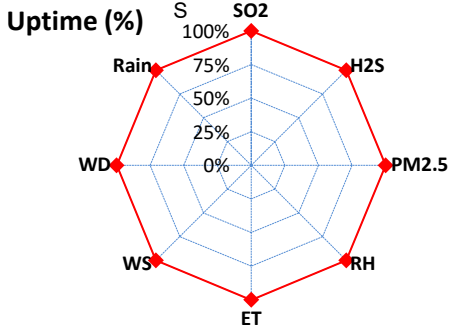
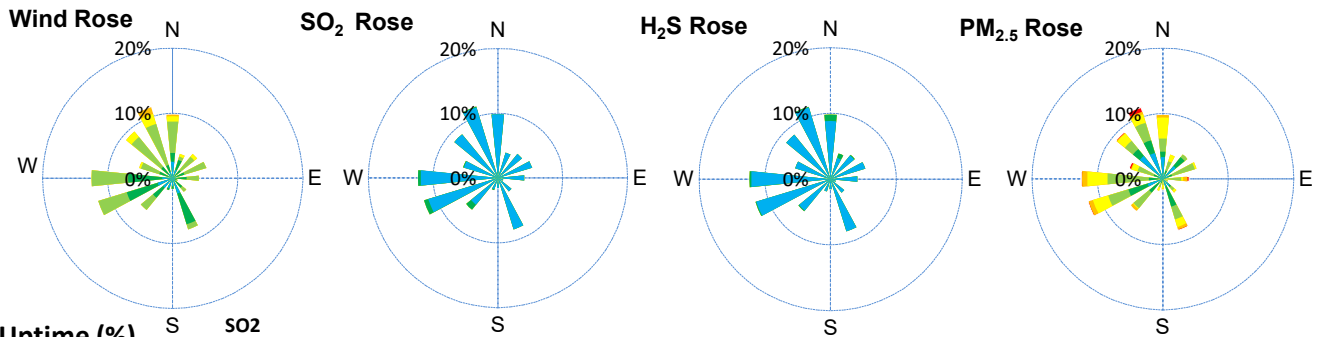
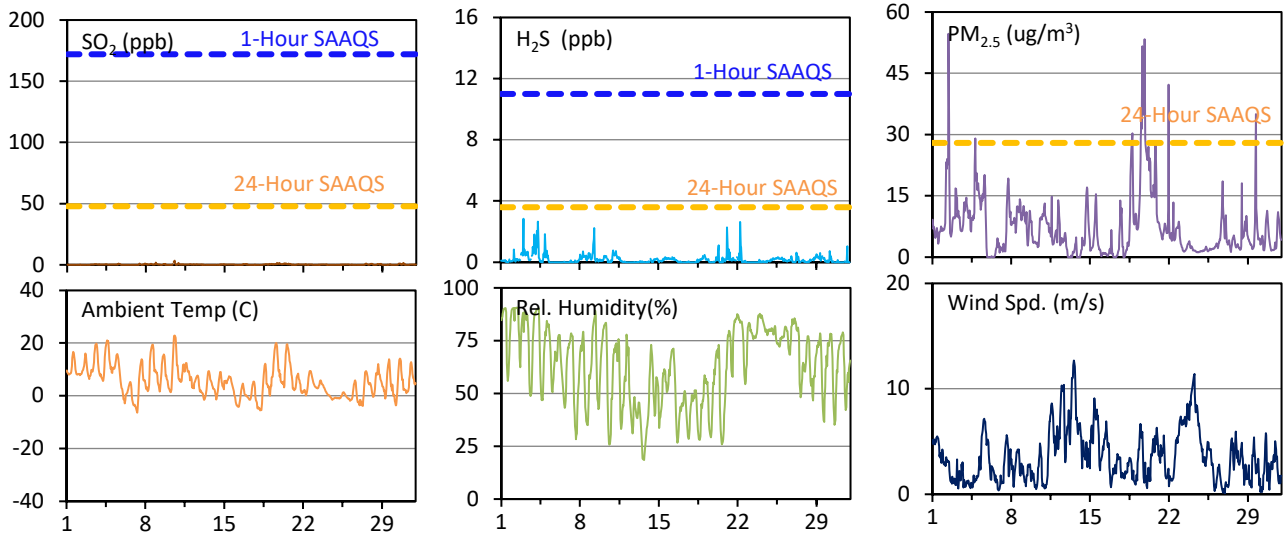
SESAA Wauchope Station - October 2022 Summary Report

Pollutants		Month Records		24-Hour Records				1-Hour Records			
Name	Conc. Unit	Avg. Conc.	Uptime	Maximum		SAAQS Objective	Exceed Days	Maximum		SAAQS Objective	Exceed Hours
				Conc.	Time			Conc.	Time		
SO ₂	ppb	0.2	100.0%	0.7	Oct-19	48	0	3.5	Oct-10 13:00	172	0
H ₂ S	ppb	0.2	100.0%	0.8	Oct-4	3.6	0	2.9	Oct-03 00:00	11	0
PM _{2.5}	ug/m ³	7	100.0%	23	Oct-19	28	0	55	Oct-02 10:00	-	-

SAAQS: Saskatchewan Ambient Air Quality Standards

* Air Quality Standard refers to Saskatchewan Ambient Air Quality Standards (SAAQS).

* Dotted lines are for SAAQS limits and solid lines are for averages.



Parameters	Unit	Color Code for Wind Spd & Pollutant Conc. Class					
Wind Speed	m/s	0.3 ≤ WS < 1.4	1.4 ≤ WS < 3.1	3.1 ≤ WS < 7.8	7.8 ≤ WS < 10.8	10.8 ≤ WS < 13.6	WS ≥ 13.6
SO ₂	ppb	0 ≤ C < 1	1 ≤ C < 5	5 ≤ C < 10	10 ≤ C < 57	57 ≤ C < 172	C ≥ 172
H ₂ S	ppb	0 ≤ C < 1	1 ≤ C < 3.6	3.6 ≤ C < 5	5 ≤ C < 8	8 ≤ C < 10.8	C ≥ 10.8
PM _{2.5}	ug/m ³	0 ≤ C < 2	2 ≤ C < 4	4 ≤ C < 10	10 ≤ C < 20	20 ≤ C < 30	C ≥ 30

Monthly Update

*All data has been slope, intercept, and baseline corrected. Data may change after validation process.

*All compliance parameters were within the Saskatchewan Ambient Air Quality Standards.

*All compliance parameters were greater than 90% operational.

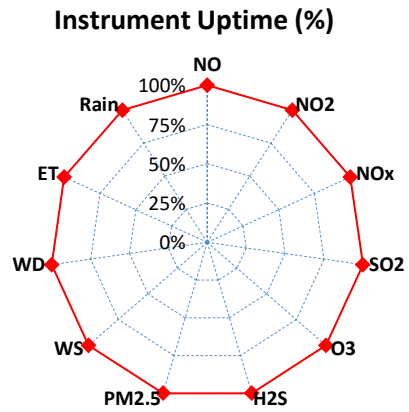
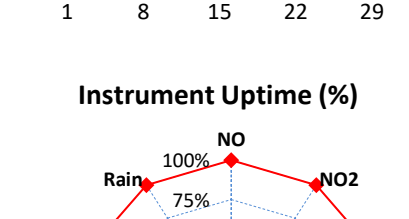
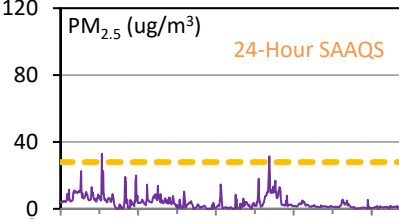
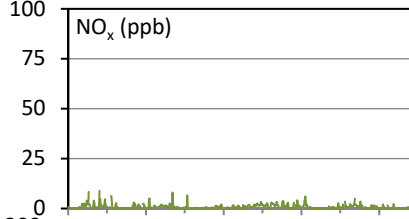
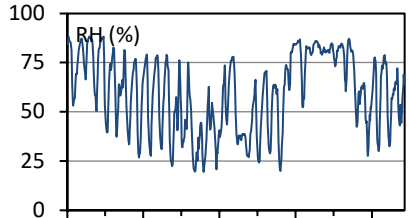
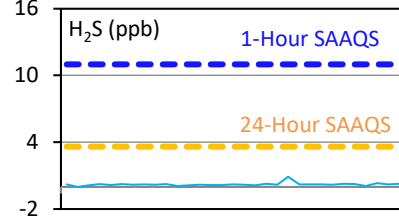
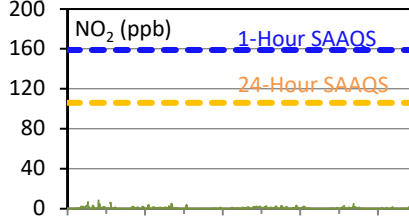
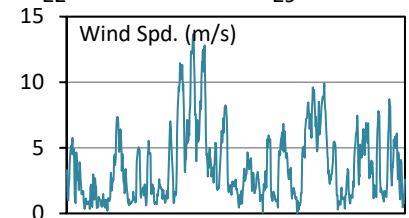
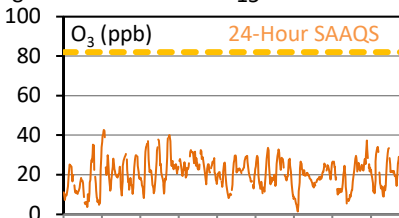
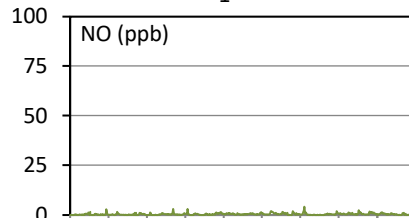
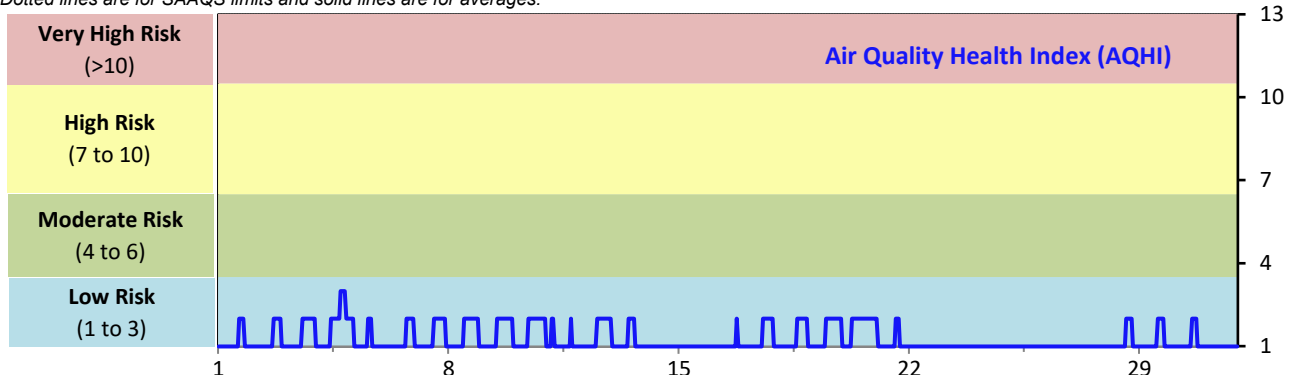
SESAA Weyburn Station - October 2022 Summary Report

Pollutants		Month Records		24-Hour Records				1-Hour Records			
Name	Conc. Unit	Avg. Conc.	Uptime	Maximum		SAAQS Standard	Exceed Days	Maximum		SAAQS Standard	Exceed Hours
				Conc.	Time			Conc.	Time		
NO	ppb	0.4	100.0%	0.8	Oct-19	-	-	4.3	Oct-22 08:00	-	-
NO ₂	ppb	0.4	100.0%	1.4	Oct-2	106	0	8.4	Oct-03 19:00	159	0
NO _x	ppb	0.7	100.0%	1.8	Oct-18	-	-	8.7	Oct-03 19:00	-	-
SO ₂	ppb	0.8	100.0%	2.9	Oct-2	48	0	18.1	Oct-17 19:00	172	0
O ₃	ppb	21	100.0%	27	Oct-12	-	-	43	Oct-04 16:00	82	0
H ₂ S	ppb	0.3	100.0%	0.8	Oct-25	3.6	0	10.2	Oct-25 23:00	11	0
PM _{2.5}	ug/m3	4	100.0%	10	Oct-2	28	0	33	Oct-04 17:00	-	-

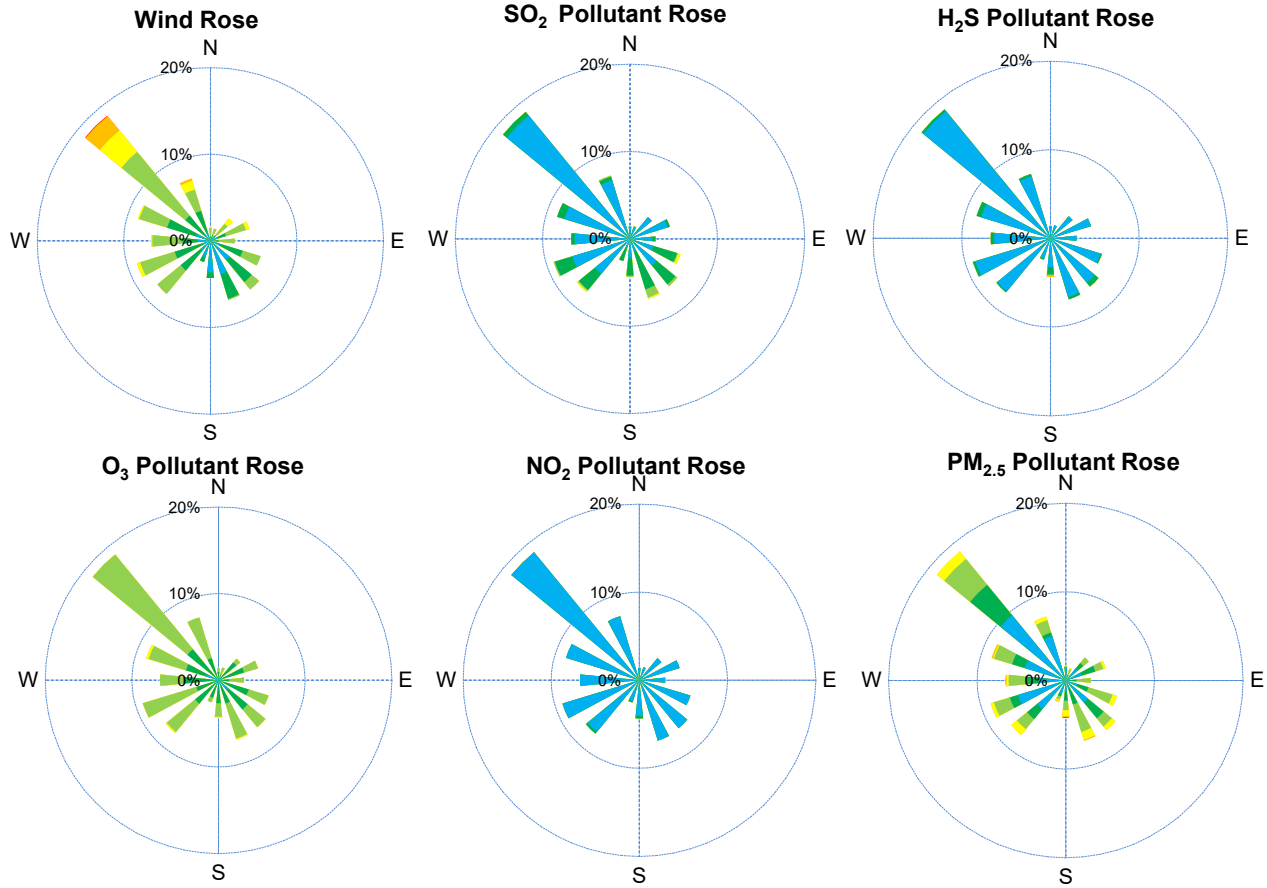
SAAQS: Saskatchewan Ambient Air Quality Standards

* Air Quality Standard refers to Saskatchewan Ambient Air Quality Standards (SAAQS).

* Dotted lines are for SAAQS limits and solid lines are for averages.



SESAA Weyburn Station - October 2022 Summary Report



Parameters	Unit	Color Code for Wind Spd & Pollutant Conc. Class					
		0.3 ≤ WS < 1.4	1.4 ≤ WS < 3.1	3.1 ≤ WS < 7.8	7.8 ≤ WS < 10.8	10.8 ≤ WS < 13.6	WS ≥ 13.6
SO ₂	ppb	0 ≤ C < 1	1 ≤ C < 5	5 ≤ C < 10	10 ≤ C < 57	57 ≤ C < 172	C ≥ 172
NO ₂	ppb	0 ≤ C < 5	5 ≤ C < 15	15 ≤ C < 30	30 ≤ C < 100	100 ≤ C < 212	C ≥ 212
O ₃	ppb	0 ≤ C < 10	10 ≤ C < 20	20 ≤ C < 40	40 ≤ C < 60	60 ≤ C < 82	C ≥ 82
H ₂ S	ppb	0 ≤ C < 1	1 ≤ C < 3.6	3.6 ≤ C < 5	5 ≤ C < 8	8 ≤ C < 10.8	C ≥ 10.8
PM _{2.5}	ug/m ³	0 ≤ C < 2	2 ≤ C < 4	4 ≤ C < 10	10 ≤ C < 20	20 ≤ C < 30	C ≥ 30

Monthly Update

*All data has been slope, intercept, and baseline corrected. Data may change after validation process.

*All compliance parameters were within the Saskatchewan Ambient Air Quality Standards.

*All compliance parameters were greater than 90% operational.