

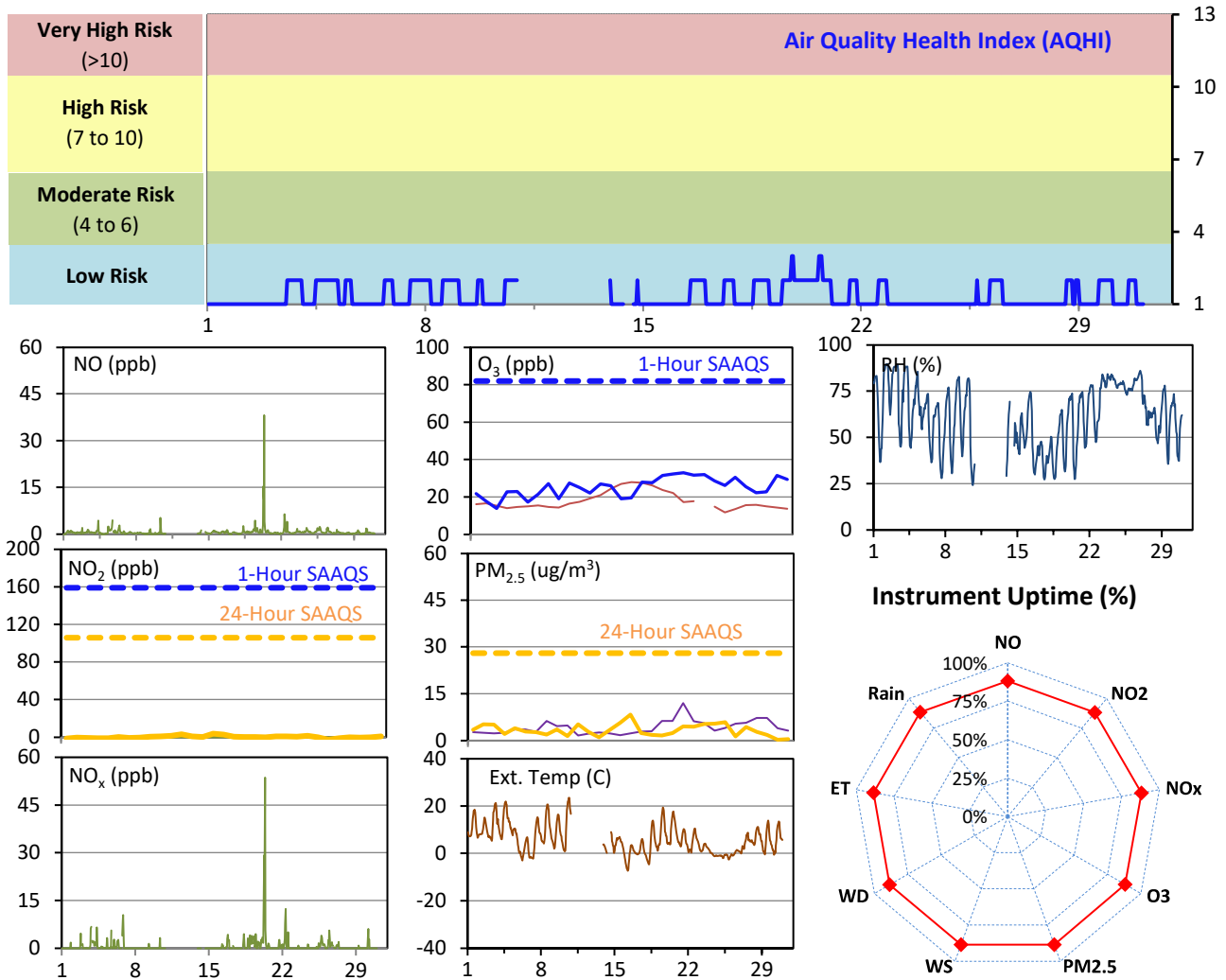
# SESAA Esterhazy Station - November 2022 Summary Report

Pollutants		Month Records		24-Hour Records				1-Hour Records			
Name	Conc. Unit	Avg. Conc.	Uptime	Maximum		SAAQS Standard	Exceed Days	Maximum		SAAQS Standard	Exceed Hours
				Conc.	Time			Conc.	Time		
NO	ppb	0.6	88.2%	3.6	Nov-20	-	-	38.2	Nov-20 08:00	-	-
NO <sub>2</sub>	ppb	0.4	88.2%	3.9	Nov-15	106	0	15.6	Nov-20 08:00	159	0
NO <sub>x</sub>	ppb	0.7	88.2%	1.5	Nov-19	-	-	53.6	Nov-20 08:00	-	-
O <sub>3</sub>	ppb	22	88.2%	27	Nov-7	-	-	42	Nov-04 14:00	82	0
PM <sub>2.5</sub>	ug/m3	6	88.6%	18	Nov-20	28	0	26	Nov-19 19:00	-	-

SAAQS: Saskatchewan Ambient Air Quality Standards

\* Air Quality Standard refers to Saskatchewan Ambient Air Quality Standards (SAAQS).

\* Dotted lines are for SAAQS limits and solid lines are for averages.



## Monthly Update

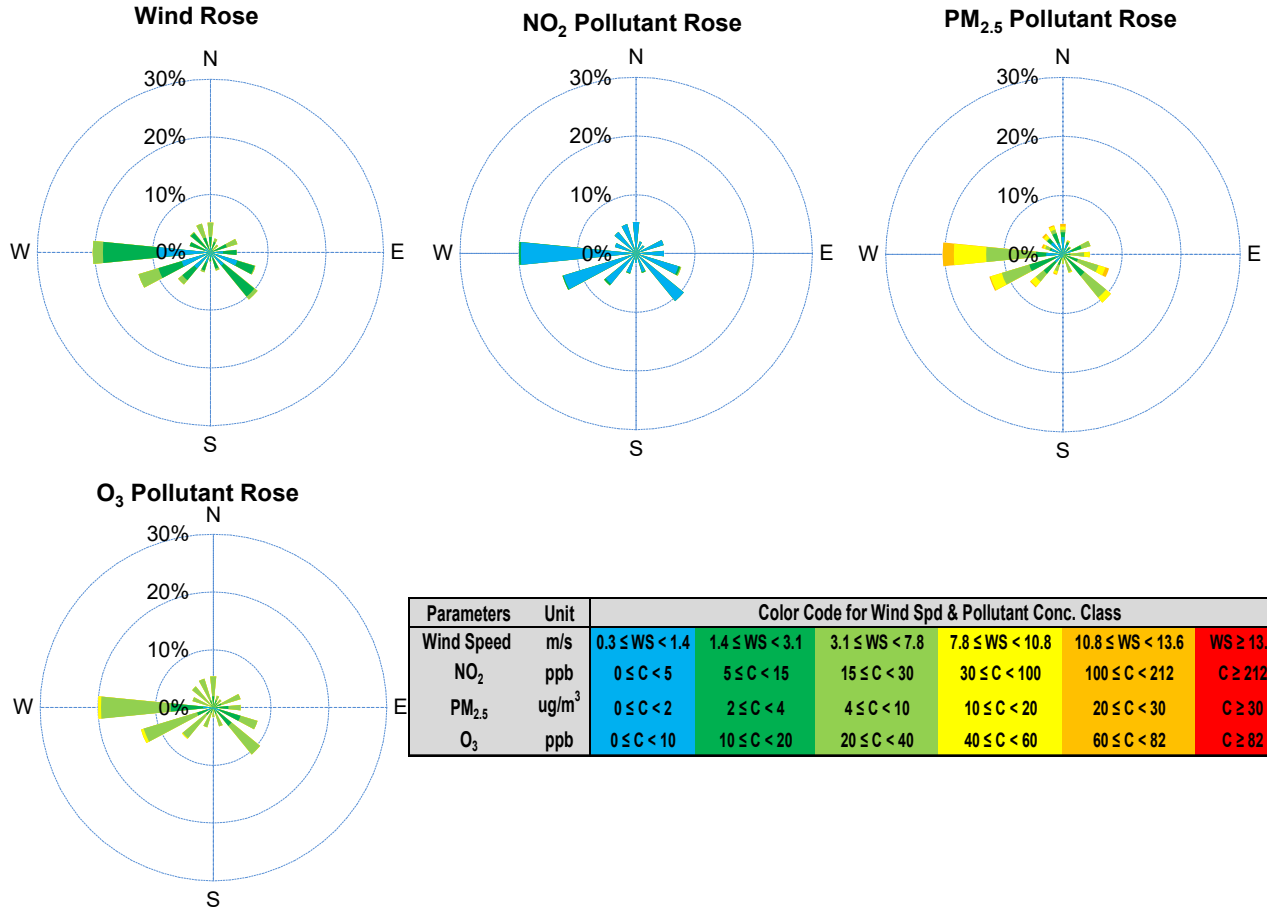
\*All data has been slope, intercept, and baseline corrected. Data may change after validation process.

\*All compliance parameters were within the Saskatchewan Ambient Air Quality Standards.

\*All compliance parameters were less than 90% operational due to power issues on site.

\* 82 hours of data for all parameters was flagged as "analyzer failure" due to a power issues on site.

# SESAA Esterhazy Station - November 2022 Summary Report



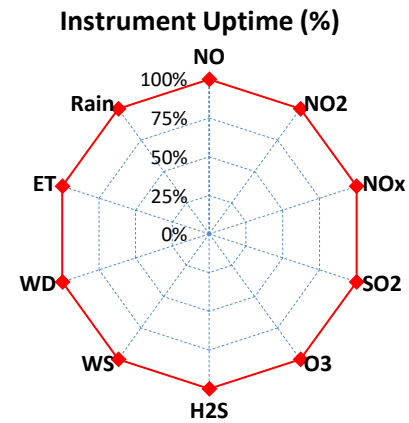
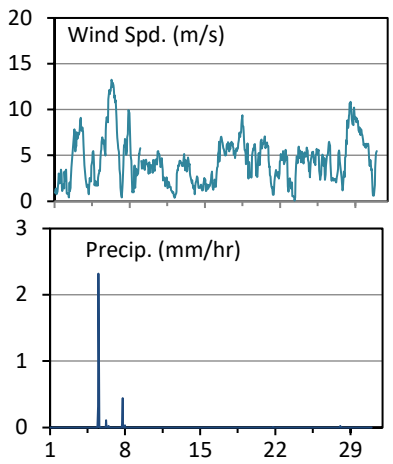
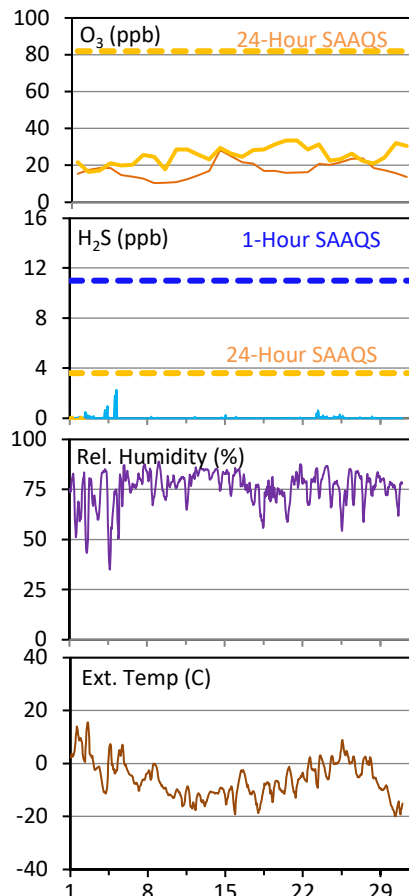
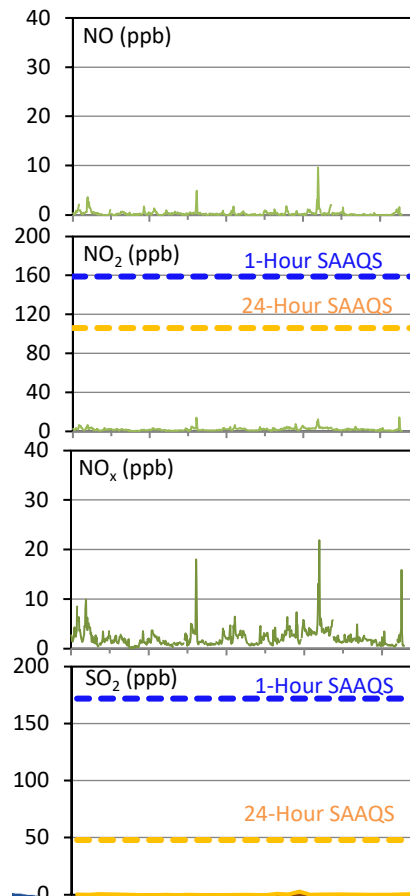
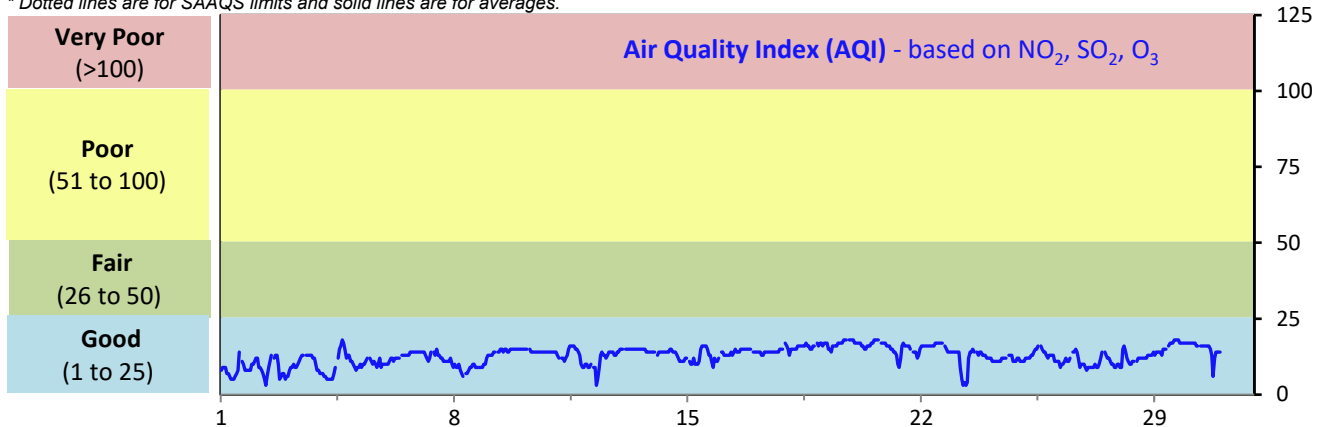
# SESAA Glen Ewen Station - November 2022 Summary Report

Pollutants		Month Records		24-Hour Records				1-Hour Records			
Name	Conc. Unit	Avg. Conc.	Uptime	Maximum		SAAQS Standard	Exceed Days	Maximum		SAAQS Standard	Exceed Hours
				Conc.	Time			Conc.	Time		
NO	ppb	0.3	100.0%	1.3	Nov-23	-	-	9.7	Nov-23 08:00	-	-
NO <sub>2</sub>	ppb	1.8	100.0%	4.5	Nov-23	106	0	14.3	Nov-30 18:00	159	0
NO <sub>x</sub>	ppb	2.1	100.0%	5.8	Nov-23	-	-	21.9	Nov-23 08:00	-	-
SO <sub>2</sub>	ppb	0.3	100.0%	2.8	Nov-20	48	0	9.0	Nov-20 11:00	172	0
O <sub>3</sub>	ppb	26	100.0%	33	Nov-19	-	-	37	Nov-19 22:00	82	0
H <sub>2</sub> S	ppb	< 0.1	100.0%	< 0.1	Nov-24	3.6	0	2.3	Nov-05 05:00	11	0

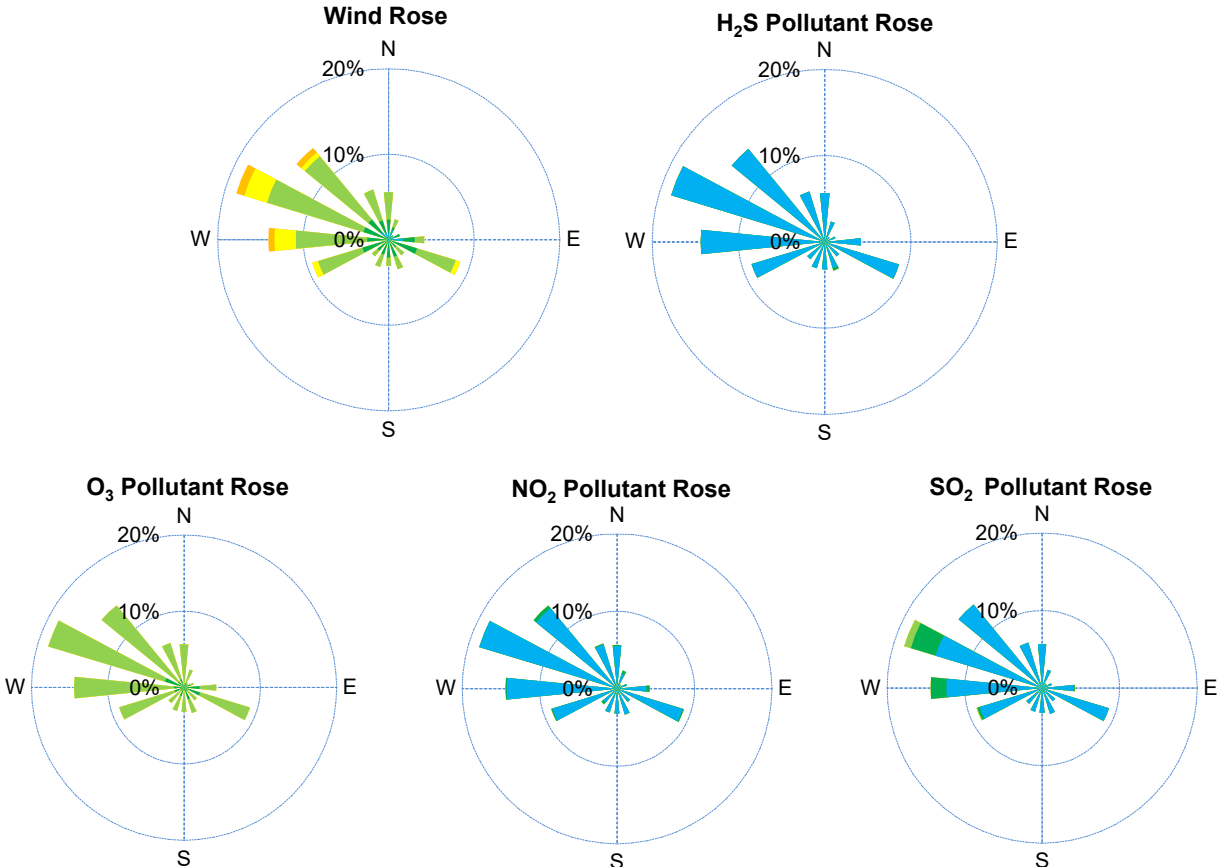
SAAQS: Saskatchewan Ambient Air Quality Standards

\* Air Quality Standard refers to Saskatchewan Ambient Air Quality Standards (SAAQS).

\* Dotted lines are for SAAQS limits and solid lines are for averages.



# SESAA Glen Ewen Station - November 2022 Summary Report



Parameters	Unit	Color Code for Wind Spd & Pollutant Conc. Class						
Wind Speed	m/s	0.3 ≤ WS < 1.4	1.4 ≤ WS < 3.1	3.1 ≤ WS < 7.8	7.8 ≤ WS < 10.8	10.8 ≤ WS < 13.6	WS ≥ 13.6	
SO <sub>2</sub>	ppb	0 ≤ C < 1	1 ≤ C < 5	5 ≤ C < 10	10 ≤ C < 57	57 ≤ C < 172	C ≥ 172	
NO <sub>2</sub>	ppb	0 ≤ C < 5	5 ≤ C < 15	15 ≤ C < 30	30 ≤ C < 100	100 ≤ C < 212	C ≥ 212	
O <sub>3</sub>	ppb	0 ≤ C < 10	10 ≤ C < 20	20 ≤ C < 40	40 ≤ C < 60	60 ≤ C < 82	C ≥ 82	
H <sub>2</sub> S	ppb	0 ≤ C < 1	1 ≤ C < 3.6	3.6 ≤ C < 5	5 ≤ C < 8	8 ≤ C < 10.8	C ≥ 10.8	

## Monthly Update

- \*All data has been slope, intercept, and baseline corrected. Data may change after validation process.
- \*All compliance parameters were within the Saskatchewan Ambient Air Quality Standards.
- \*All compliance parameters were greater than 90% operational.

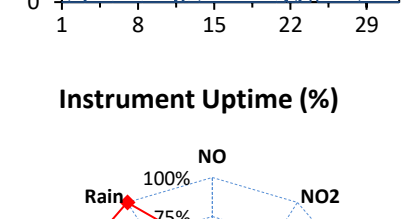
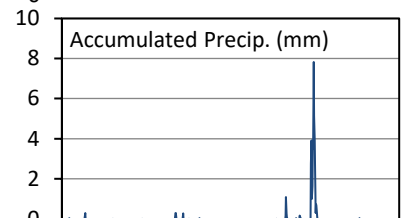
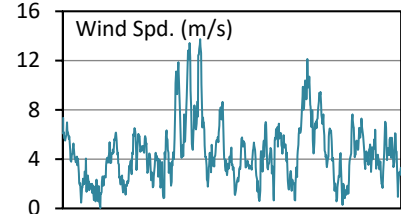
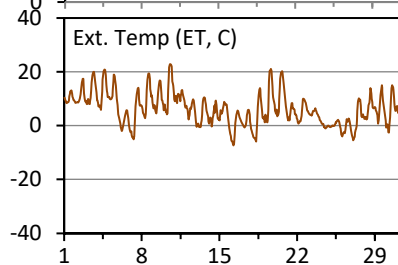
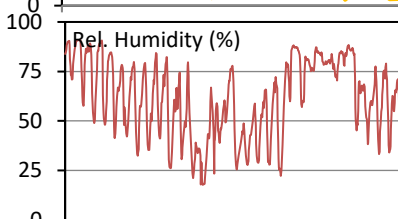
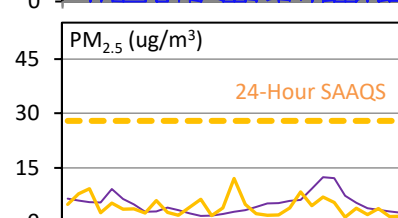
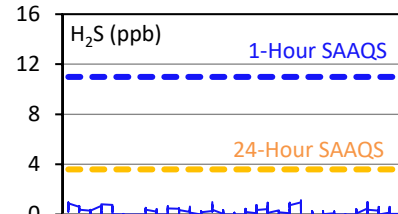
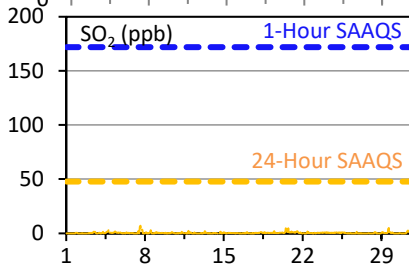
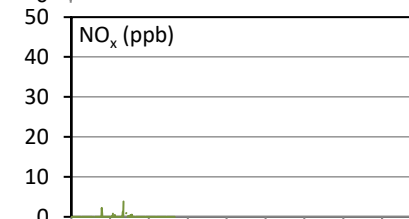
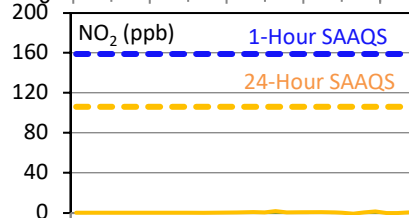
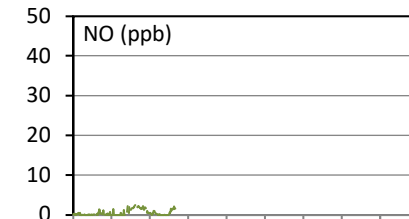
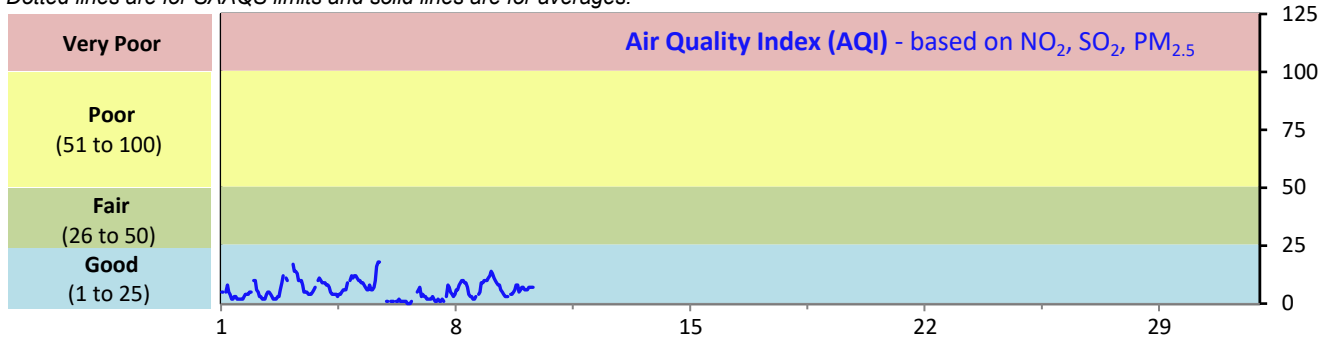
# SESAA Oxbow Station - November 2022 Summary Report

Pollutants		Month Records		24-Hour Records				1-Hour Records			
Name	Conc. Unit	Avg. Conc.	Uptime	Maximum		SAAQS Standard	Exceed Days	Maximum		SAAQS Standard	Exceed Hours
				Conc.	Time			Conc.	Time		
NO	ppb	0.5	53.2%	0.6	Nov-29	-	-	2.5	Nov-06 15:00	-	-
NO <sub>2</sub>	ppb	< 0.1	53.2%	1.7	Nov-18	106	0	3.9	Nov-05 17:00	159	0
NO <sub>x</sub>	ppb	0.1	53.2%	1.3	Nov-18	-	-	3.9	Nov-05 17:00	-	-
SO <sub>2</sub>	ppb	0.4	100.0%	1.6	Nov-18	48	0	7.1	Nov-07 14:00	172	0
H <sub>2</sub> S	ppb	0.2	100.0%	1.0	Nov-14	3.6	0	1.2	Nov-22 02:00	11	0
PM <sub>2.5</sub>	ug/m <sup>3</sup>	6	100.0%	12	Nov-15	28	0	49	Nov-19 23:00	-	-

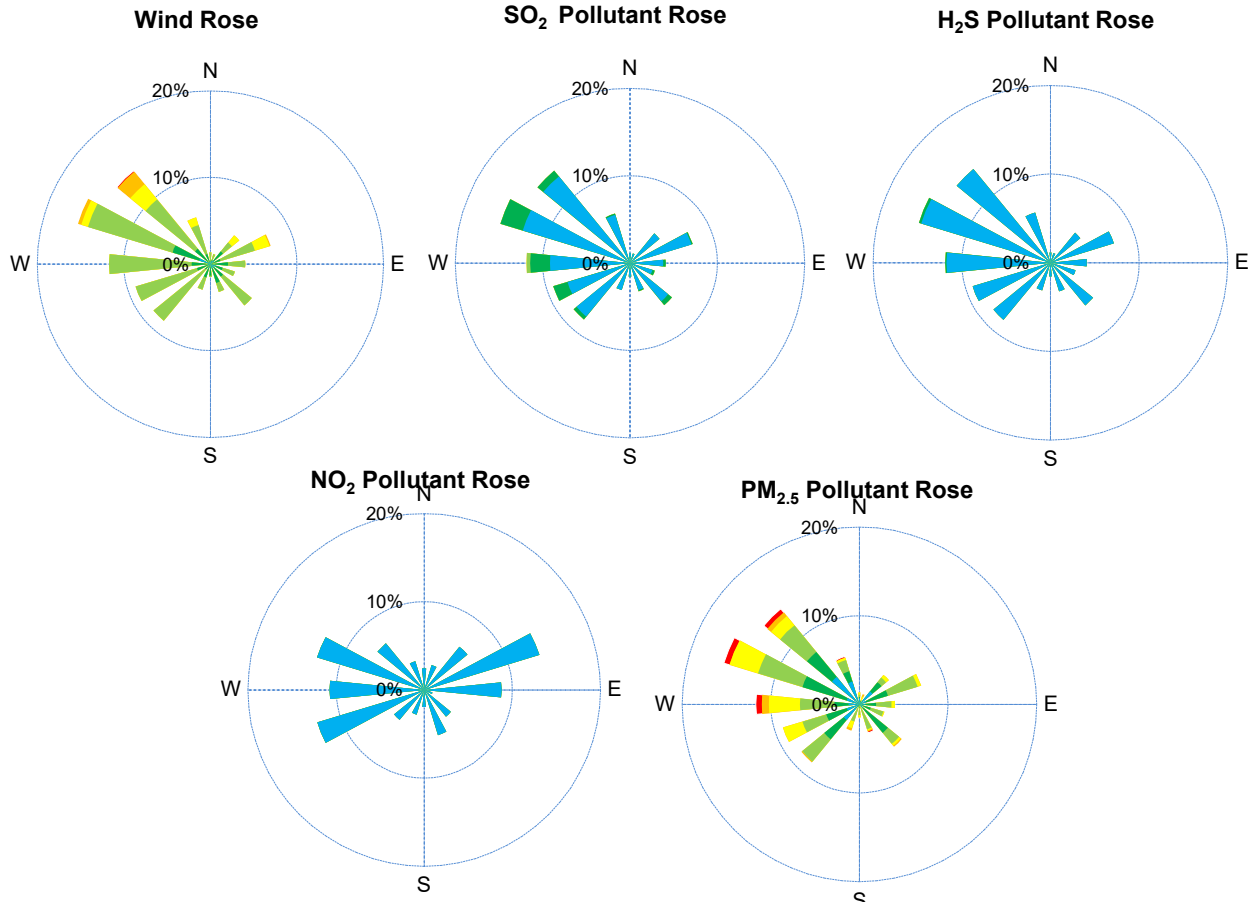
SAAQS: Saskatchewan Ambient Air Quality Standards

\* Air Quality Standard refers to Saskatchewan Ambient Air Quality Standards (SAAQS).

\* Dotted lines are for SAAQS limits and solid lines are for averages.



# SESAA Oxbow Station - November 2022 Summary Report



Parameters	Unit	Color Code for Wind Spd & Pollutant Conc. Class					
Wind Speed	m/s	0.3 ≤ WS < 1.4	1.4 ≤ WS < 3.1	3.1 ≤ WS < 7.8	7.8 ≤ WS < 10.8	10.8 ≤ WS < 13.6	WS ≥ 13.6
SO <sub>2</sub>	ppb	0 ≤ C < 1	1 ≤ C < 5	5 ≤ C < 10	10 ≤ C < 57	57 ≤ C < 172	C ≥ 172
NO <sub>2</sub>	ppb	0 ≤ C < 5	5 ≤ C < 15	15 ≤ C < 30	30 ≤ C < 100	100 ≤ C < 212	C ≥ 212
H <sub>2</sub> S	ppb	0 ≤ C < 1	1 ≤ C < 3.6	3.6 ≤ C < 5	5 ≤ C < 8	8 ≤ C < 10.8	C ≥ 10.8
PM <sub>2.5</sub>	ug/m <sup>3</sup>	0 ≤ C < 2	2 ≤ C < 4	4 ≤ C < 10	10 ≤ C < 20	20 ≤ C < 30	C ≥ 30

## Monthly Update

- \*All data has been slope, intercept, and baseline corrected. Data may change after validation process.
- \*All compliance parameters were within the Saskatchewan Ambient Air Quality Standards.
- \*All compliance parameters had greater than 90% operational uptime with the exception of NO, NO<sub>2</sub> and NO<sub>x</sub>.
- \*329 hours of data flagged as "analyzer failure" due to an issue with the analyzer power board causing intermittent power interruptions throughout the month. The board was replaced on Nov 14.

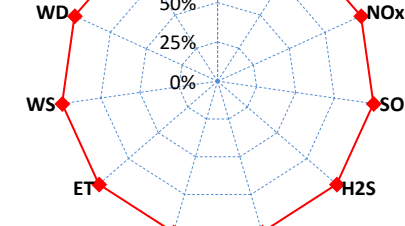
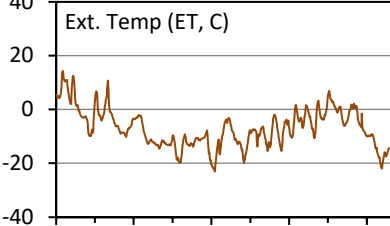
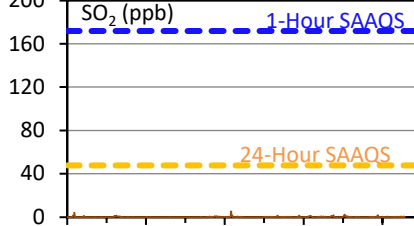
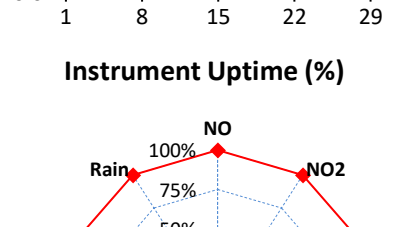
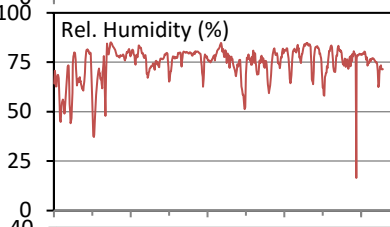
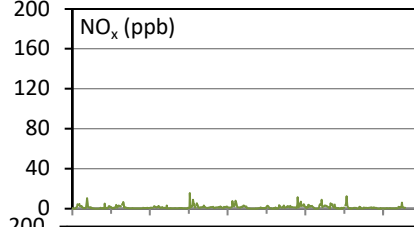
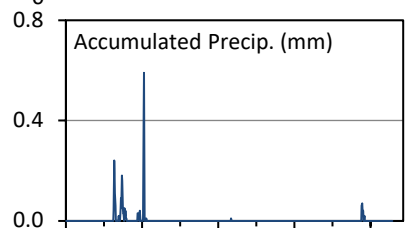
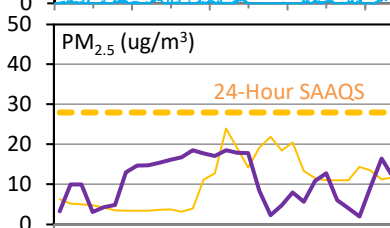
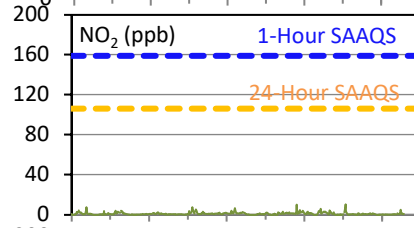
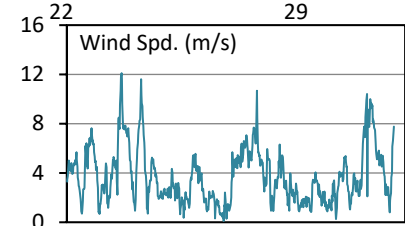
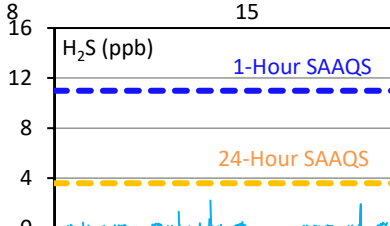
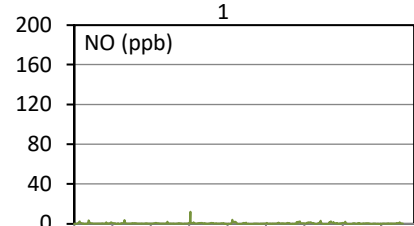
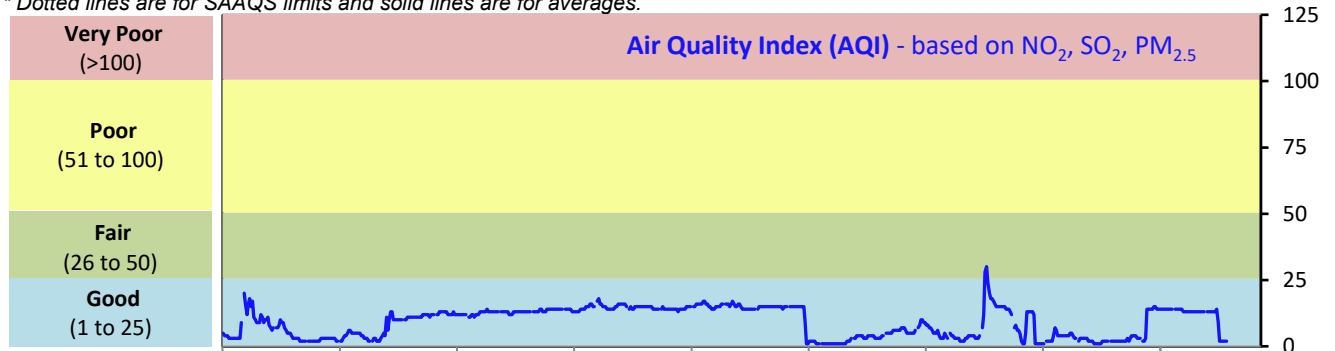
# SESAA Stoughton Station - November 2022 Summary Report

Pollutants		Month Records		24-Hour Records				1-Hour Records			
Name	Conc. Unit	Avg. Conc.	Uptime	Maximum		SAAQS Standard	Exceed Days	Maximum		SAAQS Standard	Exceed Hours
				Conc.	Time			Conc.	Time		
NO	ppb	0.3	100.0%	0.8	Nov-11	-	-	12.0	Nov-11 14:00	-	-
NO <sub>2</sub>	ppb	1.0	100.0%	2.5	Nov-21	106	0	10.4	Nov-25 17:00	159	0
NO <sub>x</sub>	ppb	1.3	100.0%	3.1	Nov-21	-	-	15.6	Nov-11 14:00	-	-
SO <sub>2</sub>	ppb	0.1	100.0%	0.2	Nov-14	48	0	5.3	Nov-15 13:00	172	0
H <sub>2</sub> S	ppb	0.1	100.0%	0.3	Nov-30	3.6	0	2.2	Nov-15 01:00	11	0
PM <sub>2.5</sub>	ug/m3	11	100.0%	19	Nov-15	28	0	40	Nov-23 19:00	-	-

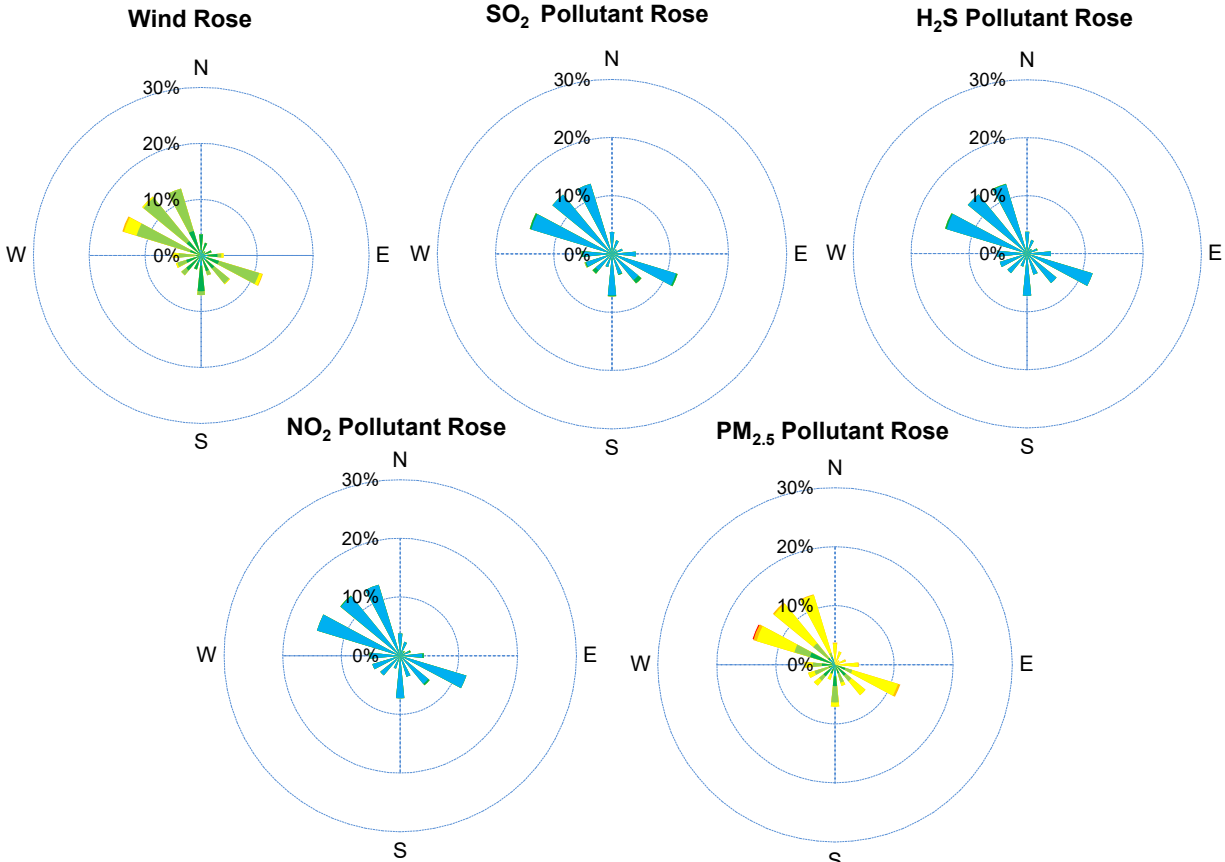
SAAQS: Saskatchewan Ambient Air Quality Standards

\* Air Quality Standard refers to Saskatchewan Ambient Air Quality Standards (SAAQS).

\* Dotted lines are for SAAQS limits and solid lines are for averages.



# SESAA Stoughton Station - November 2022 Summary Report



Parameters	Unit	Color Code for Wind Spd & Pollutant Conc. Class						
Wind Speed	m/s	0.3 ≤ WS < 1.4	1.4 ≤ WS < 3.1	3.1 ≤ WS < 7.8	7.8 ≤ WS < 10.8	10.8 ≤ WS < 13.6	WS ≥ 13.6	
SO <sub>2</sub>	ppb	0 ≤ C < 1	1 ≤ C < 5	5 ≤ C < 10	10 ≤ C < 57	57 ≤ C < 172	C ≥ 172	
NO <sub>2</sub>	ppb	0 ≤ C < 5	5 ≤ C < 15	15 ≤ C < 30	30 ≤ C < 100	100 ≤ C < 212	C ≥ 212	
H <sub>2</sub> S	ppb	0 ≤ C < 1	1 ≤ C < 3.6	3.6 ≤ C < 5	5 ≤ C < 8	8 ≤ C < 10.8	C ≥ 10.8	
PM <sub>2.5</sub>	ug/m <sup>3</sup>	0 ≤ C < 2	2 ≤ C < 4	4 ≤ C < 10	10 ≤ C < 20	20 ≤ C < 30	C ≥ 30	

## Monthly Update

\*All data has been slope, intercept, and baseline corrected. Data may change after validation process.

\*All compliance parameters were within the Saskatchewan Ambient Air Quality Standards.

\*All compliance parameters had greater than 90% operational uptime.



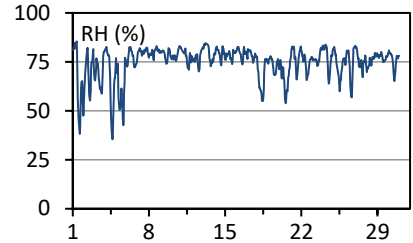
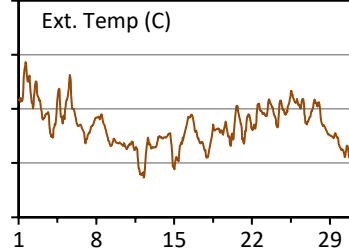
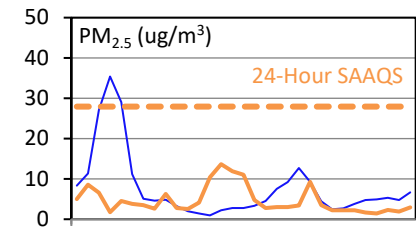
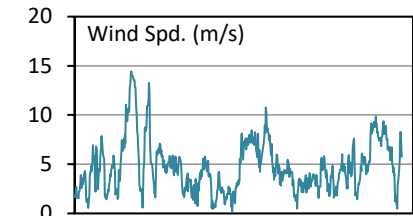
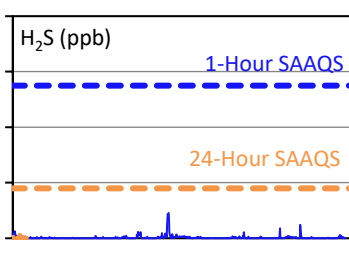
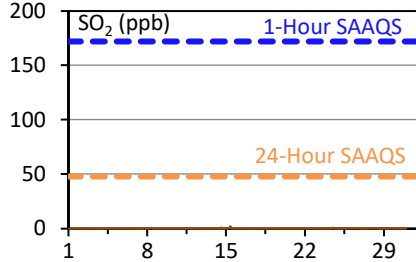
# SESAA Torquay Station - November 2022 Summary Report

Pollutants		Month Records		24-Hour Records				1-Hour Records			
Name	Conc. Unit	Avg. Conc.	Uptime	Maximum		SAAQS Standard	Exceed Days	Maximum		SAAQS Standard	Exceed Hours
				Conc.	Time			Conc.	Time		
SO <sub>2</sub>	ppb	< 0.1	100.0%	0.1	Nov-26	48	0	2.4	Nov-15 09:00	172	0
H <sub>2</sub> S	ppb	< 0.1	100.0%	0.2	Nov-15	3.6	0	1.8	Nov-15 01:00	11	0
PM <sub>2.5</sub>	ug/m3	5	100.0%	14	Nov-13	28	0	35	Nov-01 03:00	-	-

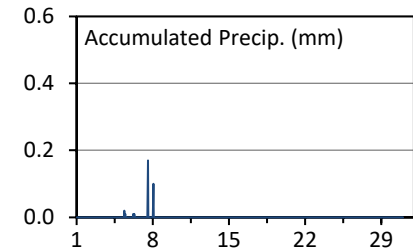
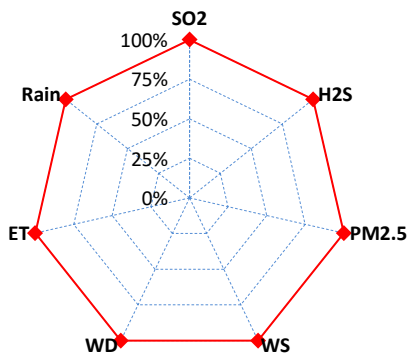
SAAQS: Saskatchewan Ambient Air Quality Standards

\* Air Quality Standard refers to Saskatchewan Ambient Air Quality Standards (SAAQS).

\* Dotted lines are for SAAQS limits and solid lines are for averages.



### Instrument Uptime (%)



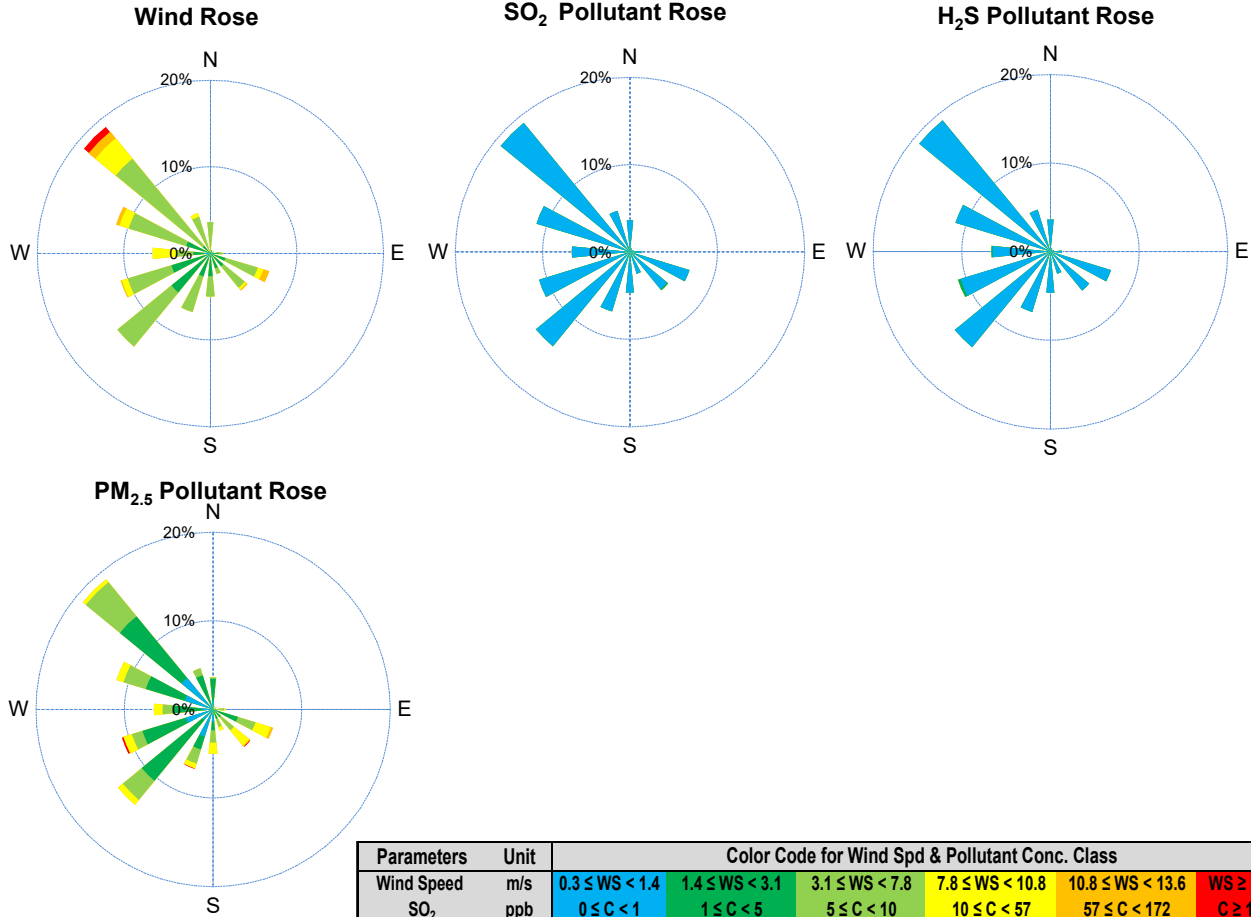
## Monthly Update

\*All data has been slope, intercept, and baseline corrected. Data may change after validation process.

\*All compliance parameters were within the Saskatchewan Ambient Air Quality Standards.

\*All compliance parameters had greater than 90% operational uptime.

# SESAA Torquay Station - November 2022 Summary Report



Parameters	Unit	Color Code for Wind Spd & Pollutant Conc. Class					
Wind Speed	m/s	0.3 ≤ WS < 1.4	1.4 ≤ WS < 3.1	3.1 ≤ WS < 7.8	7.8 ≤ WS < 10.8	10.8 ≤ WS < 13.6	WS ≥ 13.6
SO <sub>2</sub>	ppb	0 ≤ C < 1	1 ≤ C < 5	5 ≤ C < 10	10 ≤ C < 57	57 ≤ C < 172	C ≥ 172
NO <sub>2</sub>	ppb	0 ≤ C < 5	5 ≤ C < 15	15 ≤ C < 30	30 ≤ C < 100	100 ≤ C < 212	C ≥ 212
O <sub>3</sub>	ppb	0 ≤ C < 10	10 ≤ C < 20	20 ≤ C < 40	40 ≤ C < 60	60 ≤ C < 82	C ≥ 82
H <sub>2</sub> S	ppb	0 ≤ C < 1	1 ≤ C < 3.6	3.6 ≤ C < 5	5 ≤ C < 8	8 ≤ C < 10.8	C ≥ 10.8
PM <sub>2.5</sub>	ug/m <sup>3</sup>	0 ≤ C < 2	2 ≤ C < 4	4 ≤ C < 10	10 ≤ C < 20	20 ≤ C < 30	C ≥ 30

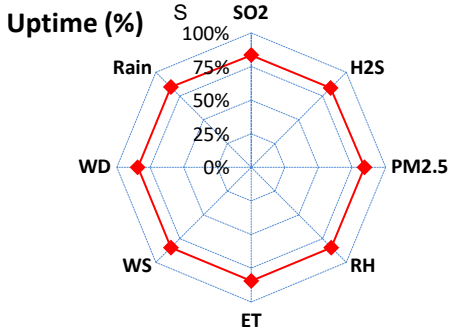
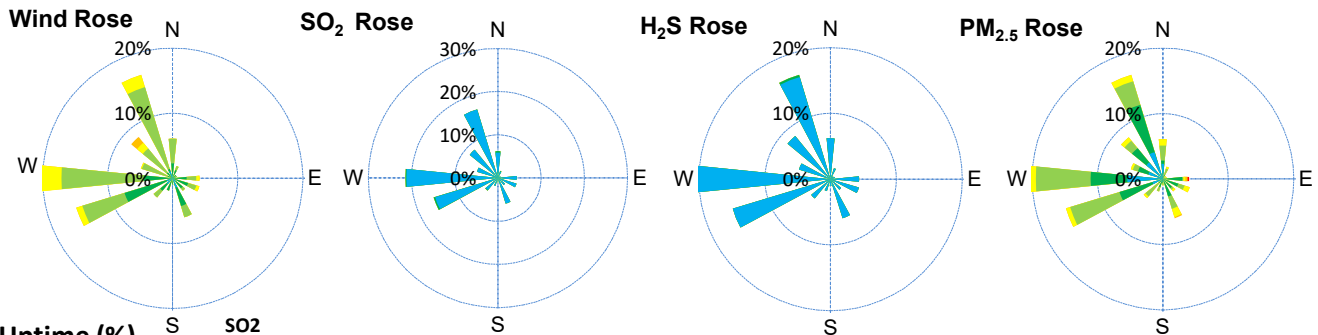
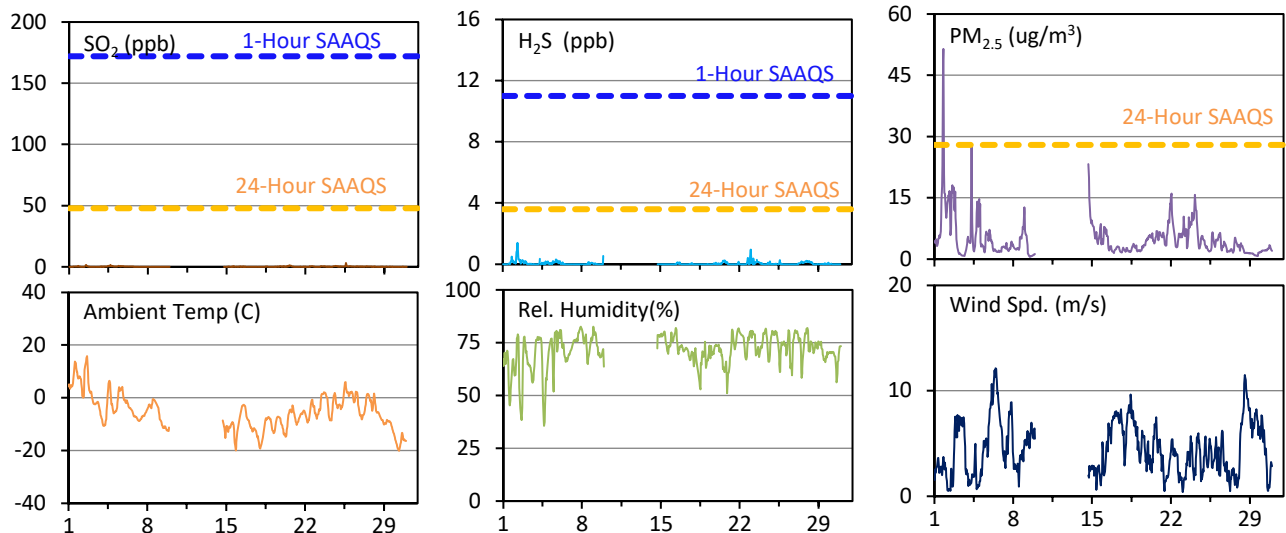
# SESAA Wauchope Station - November 2022 Summary Report

Pollutants		Month Records		24-Hour Records				1-Hour Records			
Name	Conc. Unit	Avg. Conc.	Uptime	Maximum		SAAQS Objective	Exceed Days	Maximum		SAAQS Objective	Exceed Hours
				Conc.	Time			Conc.	Time		
SO <sub>2</sub>	ppb	0.1	83.4%	0.5	Nov-25	48	0	3.2	Nov-25 14:00	172	0
H <sub>2</sub> S	ppb	< 0.1	83.4%	0.3	Nov-2	3.6	0	1.4	Nov-02 07:00	11	0
PM <sub>2.5</sub>	ug/m <sup>3</sup>	5	84.3%	13	Nov-2	28	0	51	Nov-01 19:00	-	-

SAAQS: Saskatchewan Ambient Air Quality Standards

\* Air Quality Standard refers to Saskatchewan Ambient Air Quality Standards (SAAQS).

\* Dotted lines are for SAAQS limits and solid lines are for averages.



Parameters	Unit	Color Code for Wind Spd & Pollutant Conc. Class					
Wind Speed	m/s	0.3 ≤ WS < 1.4	1.4 ≤ WS < 3.1	3.1 ≤ WS < 7.8	7.8 ≤ WS < 10.8	10.8 ≤ WS < 13.6	WS ≥ 13.6
SO <sub>2</sub>	ppb	0 ≤ C < 1	1 ≤ C < 5	5 ≤ C < 10	10 ≤ C < 57	57 ≤ C < 172	C ≥ 172
H <sub>2</sub> S	ppb	0 ≤ C < 1	1 ≤ C < 3.6	3.6 ≤ C < 5	5 ≤ C < 8	8 ≤ C < 10.8	C ≥ 10.8
PM <sub>2.5</sub>	ug/m <sup>3</sup>	0 ≤ C < 2	2 ≤ C < 4	4 ≤ C < 10	10 ≤ C < 20	20 ≤ C < 30	C ≥ 30

## Monthly Update

- \*All data has been slope, intercept, and baseline corrected. Data may change after validation process.
- \*All compliance parameters were within the Saskatchewan Ambient Air Quality Standards.
- \*All compliance parameters were less than 90% operational due to a power issue on site, a fuse was replaced.

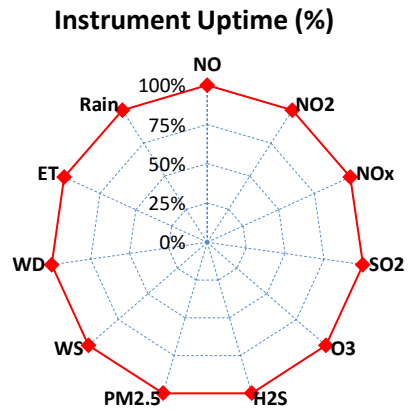
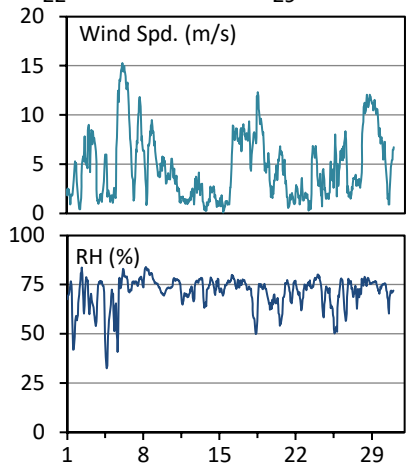
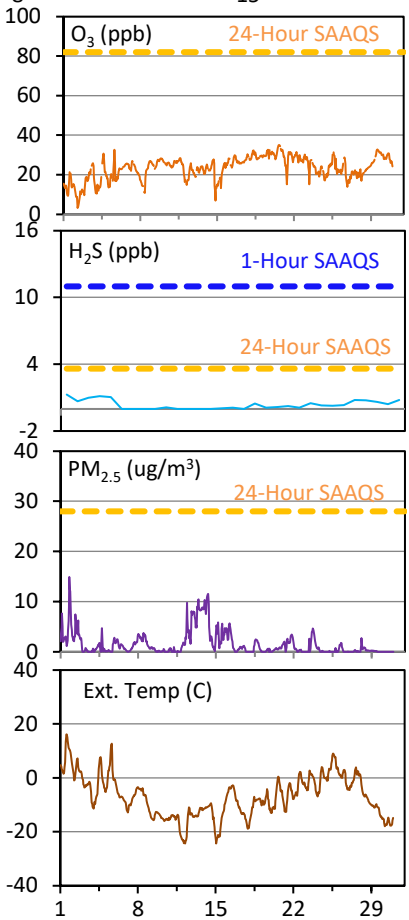
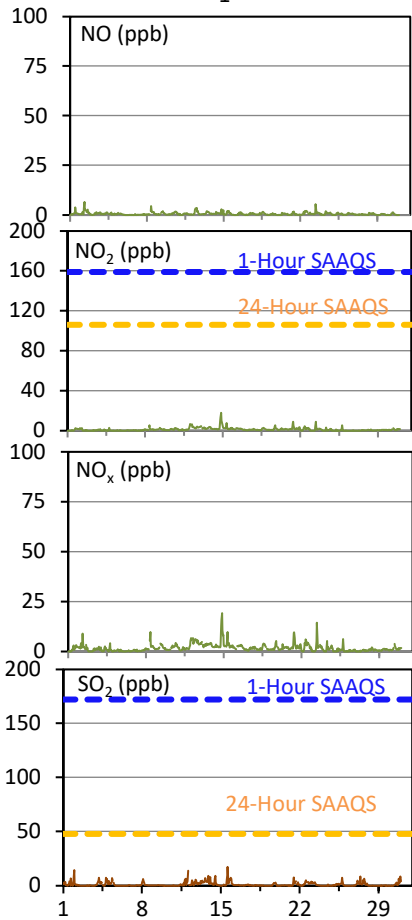
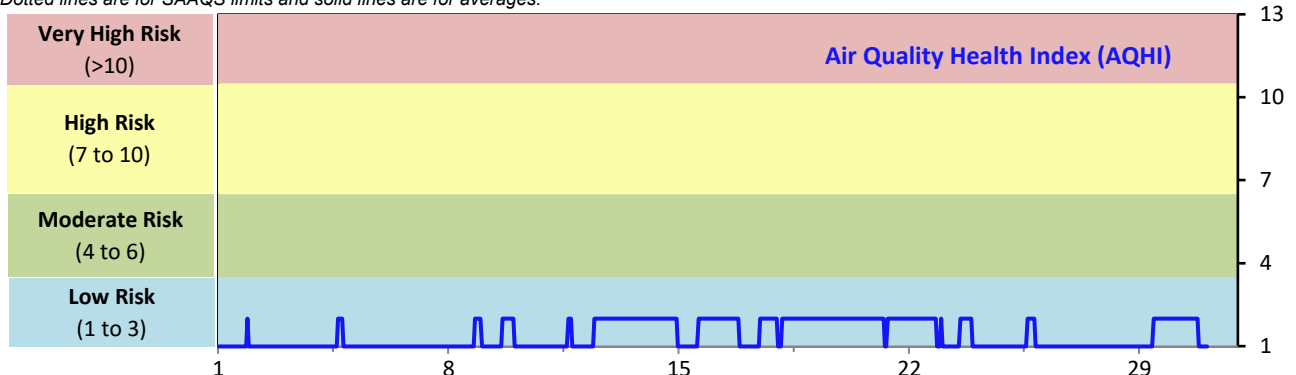
# SESAA Weyburn Station - November 2022 Summary Report

Pollutants		Month Records		24-Hour Records				1-Hour Records			
Name	Conc. Unit	Avg. Conc.	Uptime	Maximum		SAAQS Standard	Exceed Days	Maximum		SAAQS Standard	Exceed Hours
				Conc.	Time			Conc.	Time		
NO	ppb	0.5	100.0%	1.4	Nov-2	-	-	6.6	Nov-02 07:00	-	-
NO <sub>2</sub>	ppb	1.2	100.0%	4.0	Nov-14	106	0	17.9	Nov-14 20:00	159	0
NO <sub>x</sub>	ppb	1.7	100.0%	5.0	Nov-14	-	-	19.3	Nov-14 20:00	-	-
SO <sub>2</sub>	ppb	1.1	100.0%	3.6	Nov-13	48	0	17.5	Nov-15 14:00	172	0
O <sub>3</sub>	ppb	23	100.0%	32	Nov-20	-	-	35	Nov-20 16:00	82	0
H <sub>2</sub> S	ppb	0.4	100.0%	2.9	Nov-4	3.6	0	24	Nov-04 04:00	11	4
PM <sub>2.5</sub>	ug/m3	2	100.0%	8	Nov-13	28	0	15	Nov-01 19:00	-	-

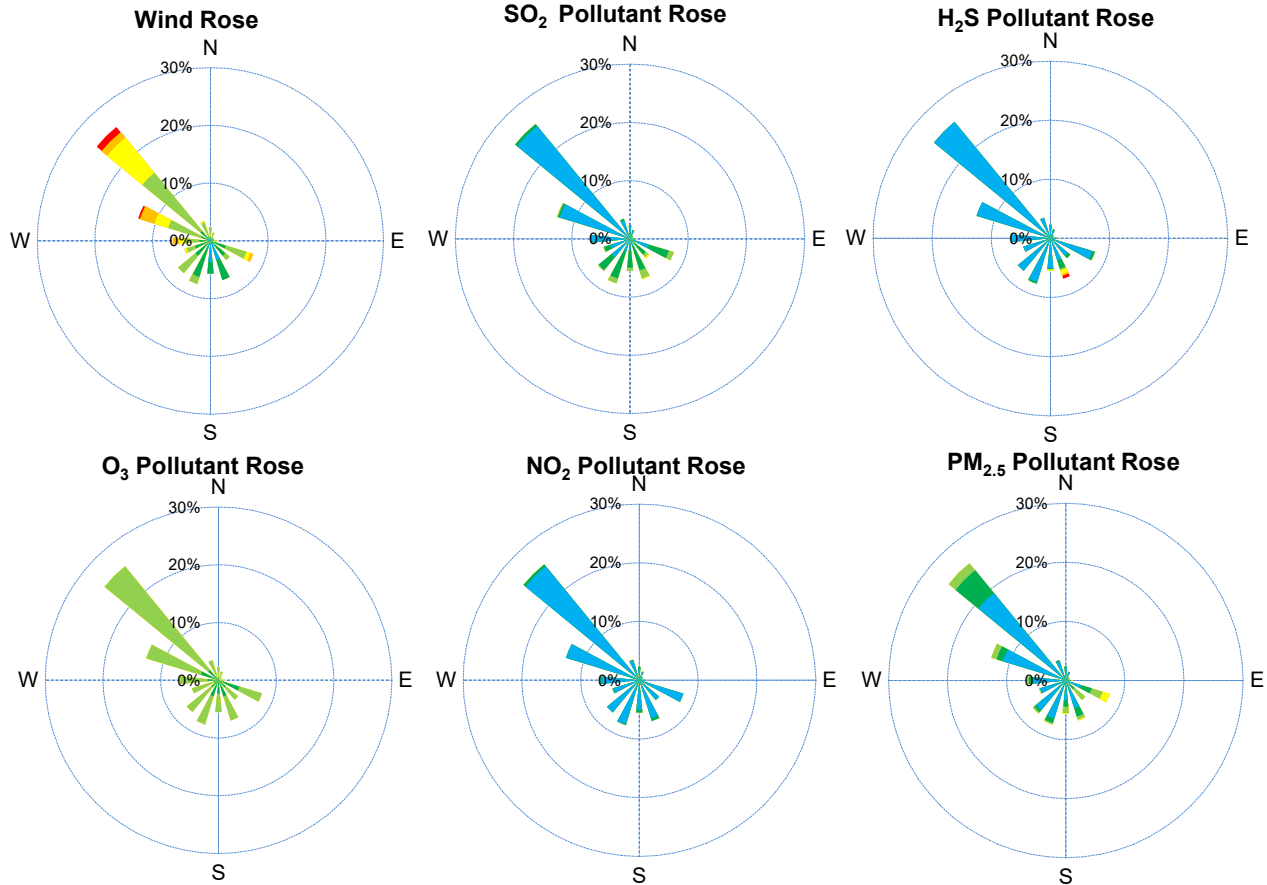
SAAQS: Saskatchewan Ambient Air Quality Standards

\* Air Quality Standard refers to Saskatchewan Ambient Air Quality Standards (SAAQS).

\* Dotted lines are for SAAQS limits and solid lines are for averages.



# SESAA Weyburn Station - November 2022 Summary Report



Parameters	Unit	Color Code for Wind Spd & Pollutant Conc. Class					
Wind Speed	m/s	$0.3 \leq WS < 1.4$	$1.4 \leq WS < 3.1$	$3.1 \leq WS < 7.8$	$7.8 \leq WS < 10.8$	$10.8 \leq WS < 13.6$	$WS \geq 13.6$
SO <sub>2</sub>	ppb	$0 \leq C < 1$	$1 \leq C < 5$	$5 \leq C < 10$	$10 \leq C < 57$	$57 \leq C < 172$	$C \geq 172$
NO <sub>2</sub>	ppb	$0 \leq C < 5$	$5 \leq C < 15$	$15 \leq C < 30$	$30 \leq C < 100$	$100 \leq C < 212$	$C \geq 212$
O <sub>3</sub>	ppb	$0 \leq C < 10$	$10 \leq C < 20$	$20 \leq C < 40$	$40 \leq C < 60$	$60 \leq C < 82$	$C \geq 82$
H <sub>2</sub> S	ppb	$0 \leq C < 1$	$1 \leq C < 3.6$	$3.6 \leq C < 5$	$5 \leq C < 8$	$8 \leq C < 10.8$	$C \geq 10.8$
PM <sub>2.5</sub>	ug/m <sup>3</sup>	$0 \leq C < 2$	$2 \leq C < 4$	$4 \leq C < 10$	$10 \leq C < 20$	$20 \leq C < 30$	$C \geq 30$

## Monthly Update

\*All data has been slope, intercept, and baseline corrected. Data may change after validation process.

\*All compliance parameters were within the Saskatchewan Ambient Air Quality Standards.

\*All compliance parameters were greater than 90% operational.