

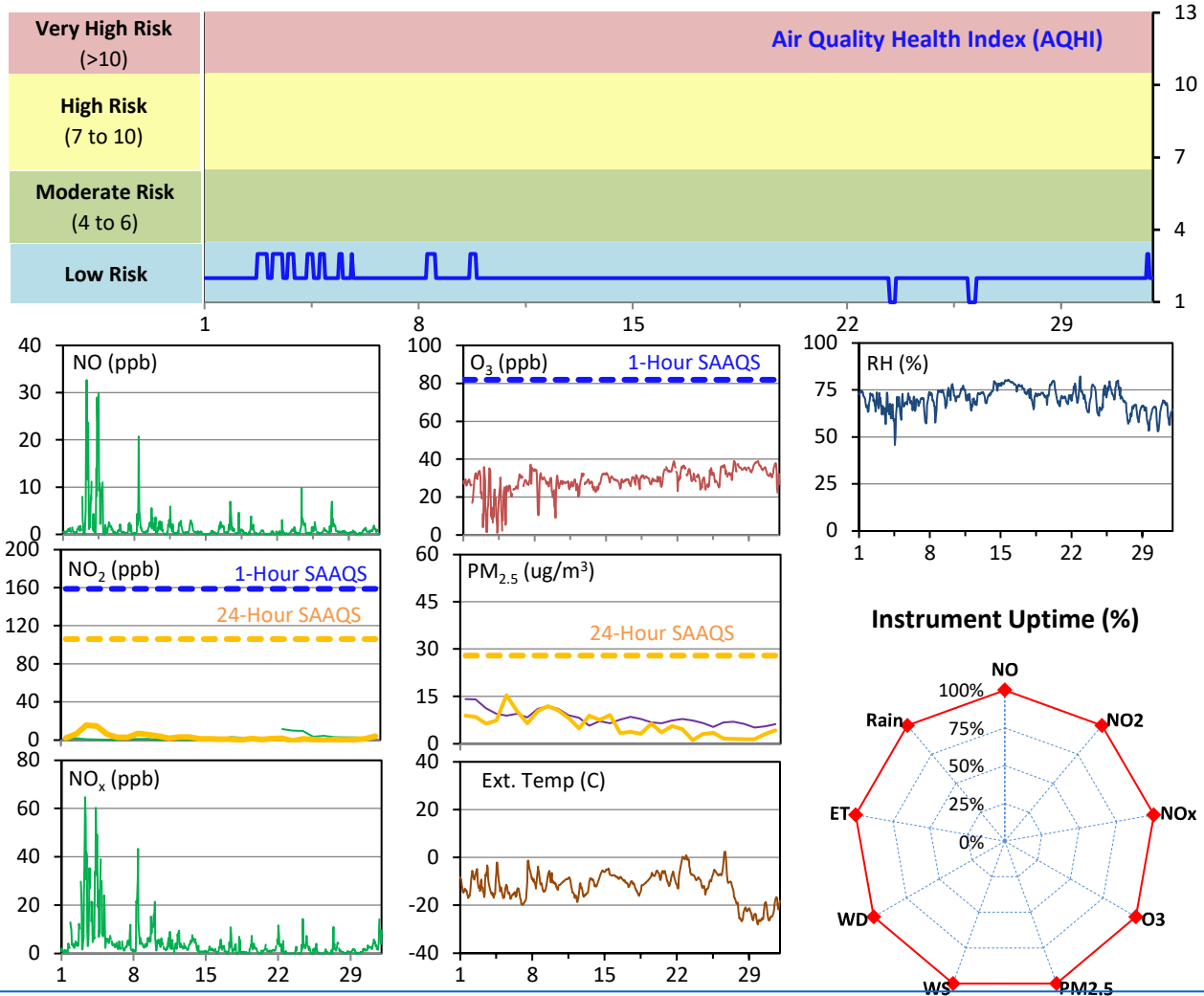
SESAA Esterhazy Station - January 2023 Summary Report

Pollutants		Month Records		24-Hour Records				1-Hour Records			
Name	Conc. Unit	Avg. Conc.	Uptime	Maximum		SAAQS Standard	Exceed Days	Maximum		SAAQS Standard	Exceed Hours
				Conc.	Time			Conc.	Time		
NO	ppb	1.4	100.0%	9.0	Jan-4	-	-	32.7	Jan-03 07:00	-	-
NO ₂	ppb	2.9	100.0%	15.5	Jan-3	106	0	32.1	Jan-03 07:00	159	0
NO _x	ppb	4.2	100.0%	23.7	Jan-3	-	-	64.7	Jan-03 07:00	-	-
O ₃	ppb	29	100.0%	36	Jan-29	-	-	39	Jan-29 21:00	82	0
PM _{2.5}	ug/m3	6	100.0%	15	Jan-5	28	0	23	Jan-11 02:00	-	-

SAAQS: Saskatchewan Ambient Air Quality Standards

* Air Quality Standard refers to Saskatchewan Ambient Air Quality Standards (SAAQS).

* Dotted lines are for SAAQS limits and solid lines are for averages.



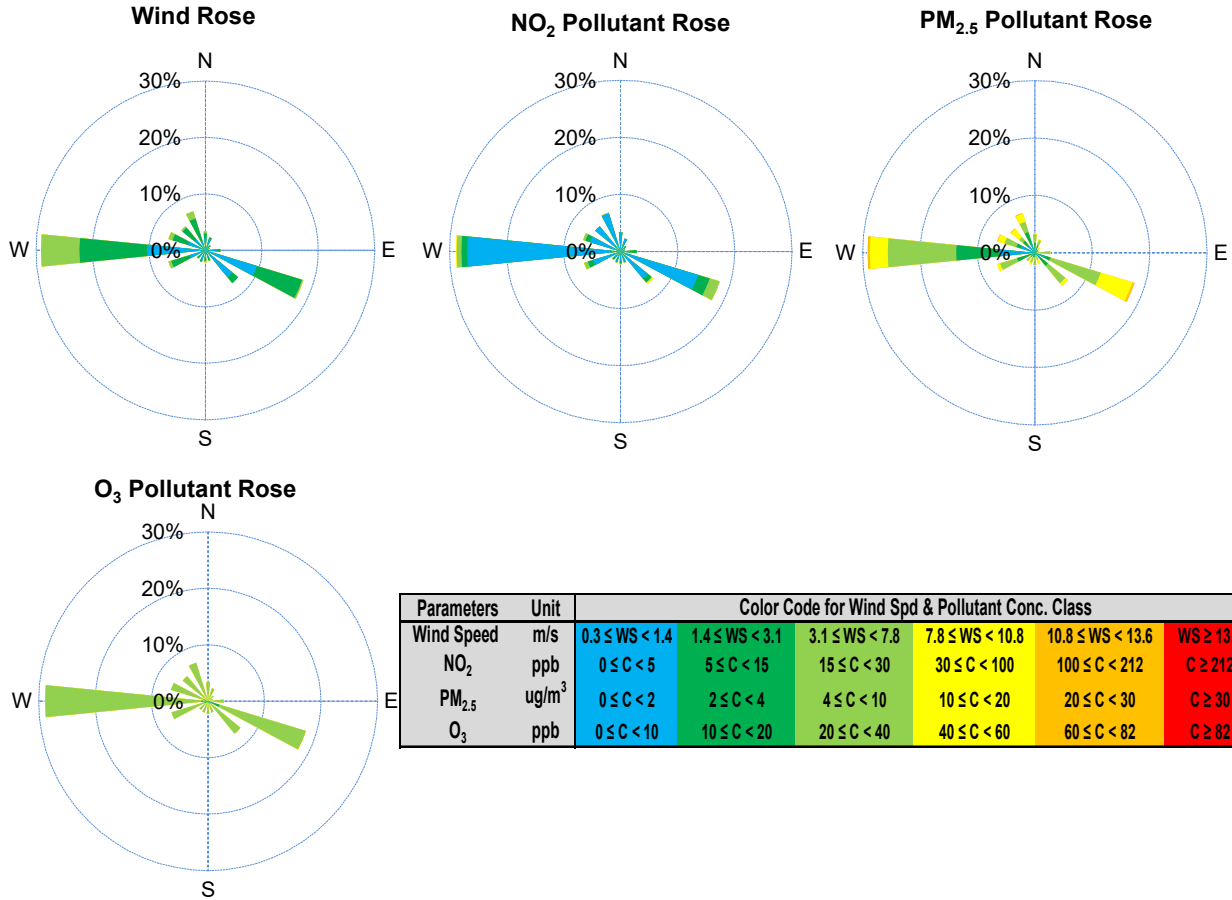
Monthly Update

*All data has been slope, intercept, and baseline corrected. Data may change after validation process.

*All compliance parameters were within the Saskatchewan Ambient Air Quality Standards.

*All compliance parameters were above 90% operational.

SESAA Esterhazy Station - January 2023 Summary Report



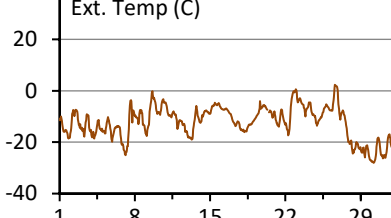
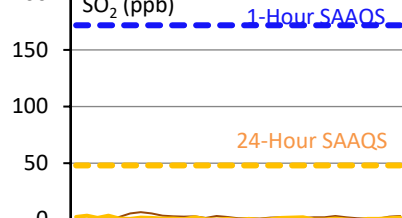
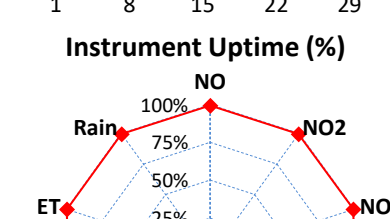
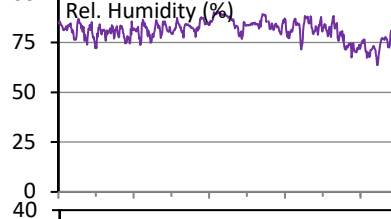
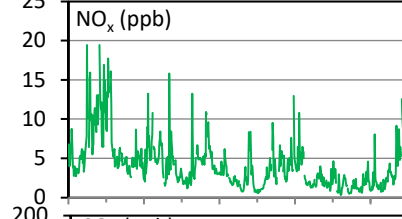
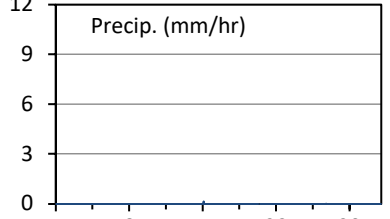
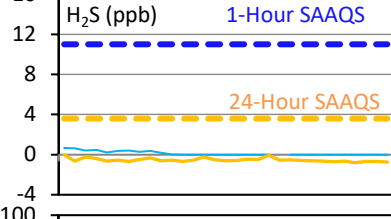
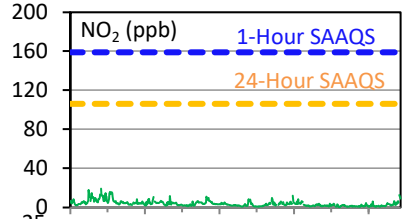
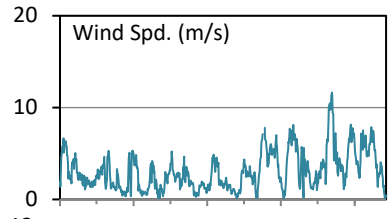
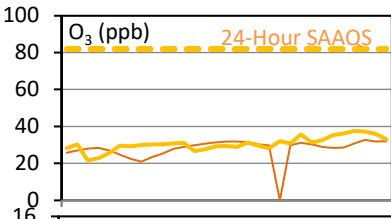
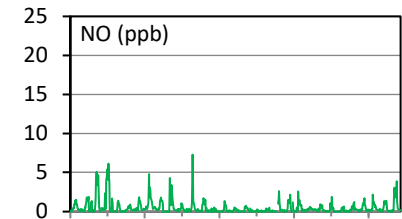
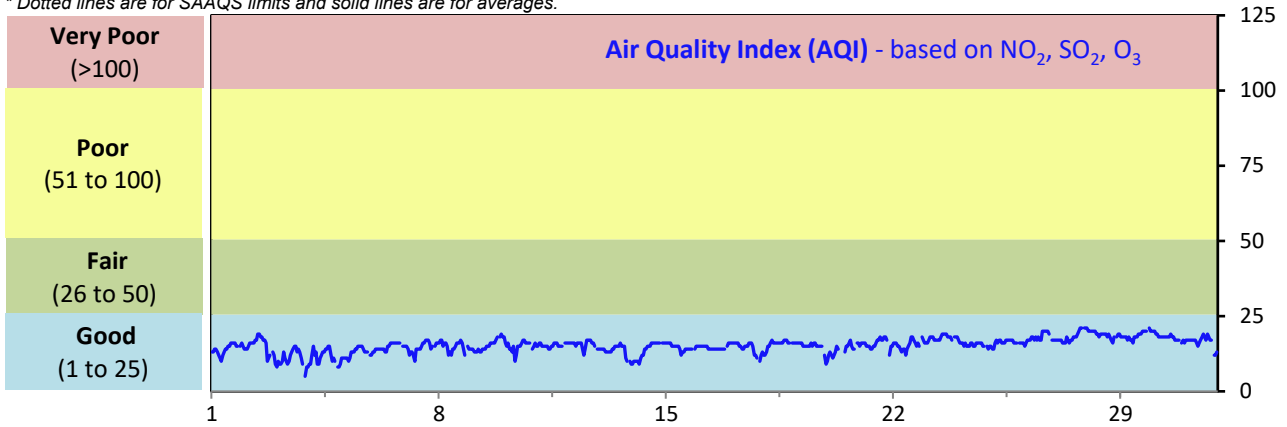
SESAA Glen Ewen Station - January 2023 Summary Report

Pollutants		Month Records		24-Hour Records				1-Hour Records			
Name	Conc. Unit	Avg. Conc.	Uptime	Maximum		SAAQS Standard	Exceed Days	Maximum		SAAQS Standard	Exceed Hours
				Conc.	Time			Conc.	Time		
NO	ppb	0.5	99.4%	2.0	Jan-4	-	-	7.3	Jan-12 11:00	-	-
NO ₂	ppb	3.6	99.4%	10.1	Jan-4	106	0	19.0	Jan-03 21:00	159	0
NO _x	ppb	4.1	99.4%	12.1	Jan-4	-	-	19.4	Jan-02 17:00	-	-
SO ₂	ppb	1.1	99.4%	3.5	Jan-2	48	0	14.3	Jan-12 11:00	172	0
O ₃	ppb	31	99.4%	38	Jan-28	-	-	42	Jan-29 21:00	82	0
H ₂ S	ppb	< 0.1	99.4%	< 0.1	Jan-20	3.6	0	0.9	Jan-03 23:00	11	0

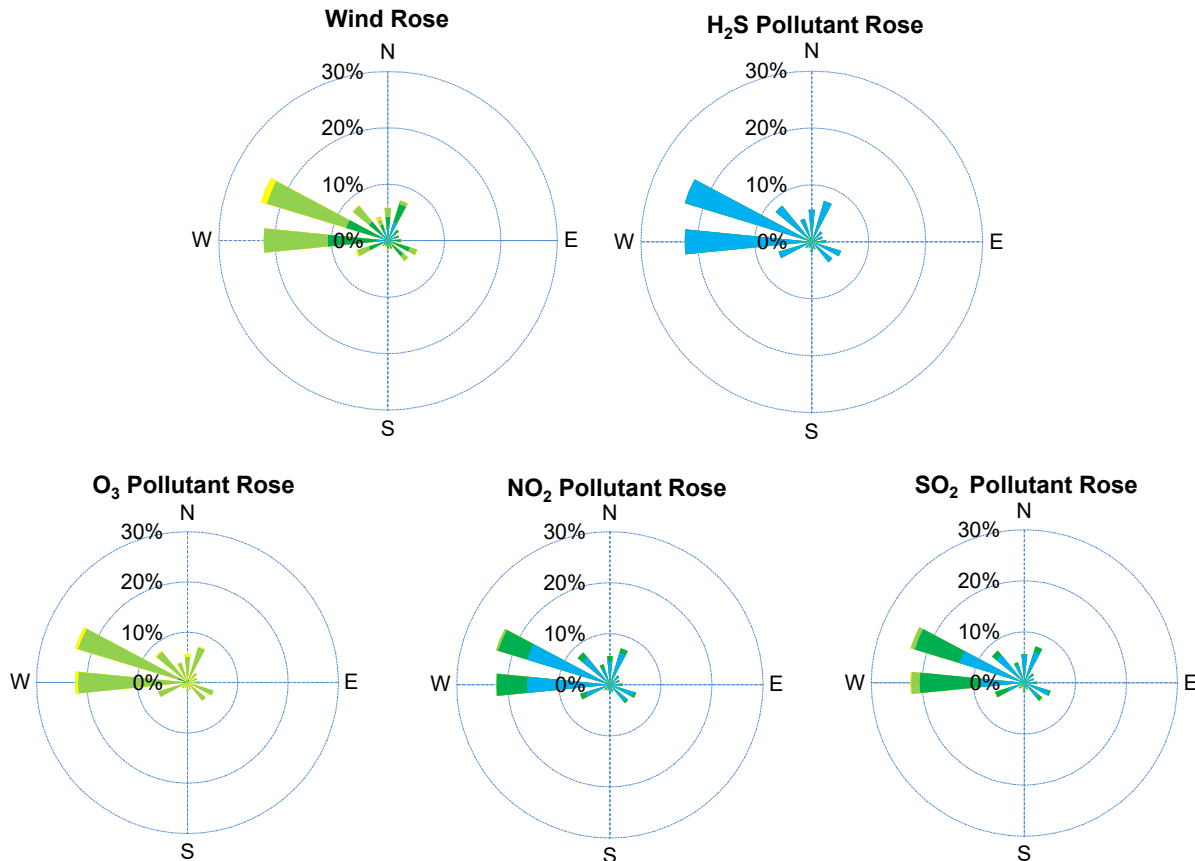
SAAQS: Saskatchewan Ambient Air Quality Standards

* Air Quality Standard refers to Saskatchewan Ambient Air Quality Standards (SAAQS).

* Dotted lines are for SAAQS limits and solid lines are for averages.



SESAA Glen Ewen Station - January 2023 Summary Report



Parameters	Unit	Color Code for Wind Spd & Pollutant Conc. Class						
Wind Speed	m/s	0.3 ≤ WS < 1.4	1.4 ≤ WS < 3.1	3.1 ≤ WS < 7.8	7.8 ≤ WS < 10.8	10.8 ≤ WS < 13.6	WS ≥ 13.6	
SO ₂	ppb	0 ≤ C < 1	1 ≤ C < 5	5 ≤ C < 10	10 ≤ C < 57	57 ≤ C < 172	C ≥ 172	
NO ₂	ppb	0 ≤ C < 5	5 ≤ C < 15	15 ≤ C < 30	30 ≤ C < 100	100 ≤ C < 212	C ≥ 212	
O ₃	ppb	0 ≤ C < 10	10 ≤ C < 20	20 ≤ C < 40	40 ≤ C < 60	60 ≤ C < 82	C ≥ 82	
H ₂ S	ppb	0 ≤ C < 1	1 ≤ C < 3.6	3.6 ≤ C < 5	5 ≤ C < 8	8 ≤ C < 10.8	C ≥ 10.8	

Monthly Update

- *All data has been slope, intercept, and baseline corrected. Data may change after validation process.
- *All compliance parameters were within the Saskatchewan Ambient Air Quality Standards.
- *All compliance parameters were greater than 90% operational.
- *4 hours of data for all parameters is flagged as "power failure" due to intermittent power interruptions on site.

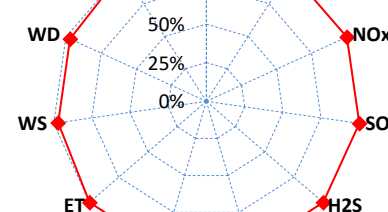
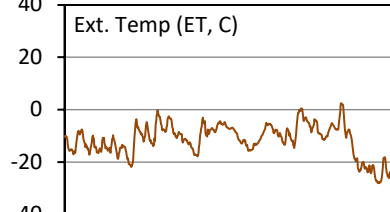
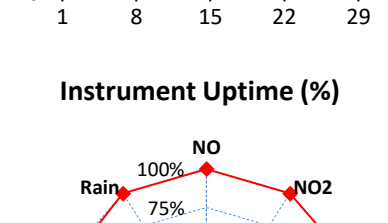
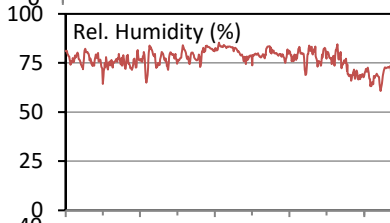
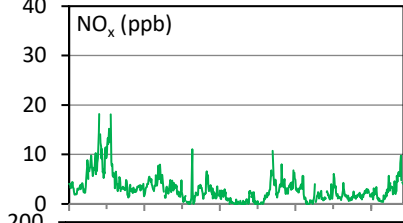
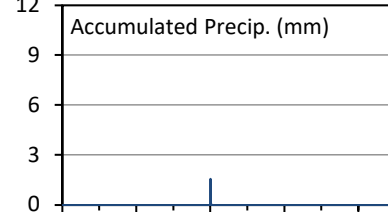
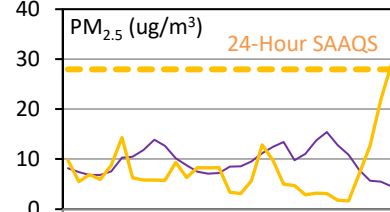
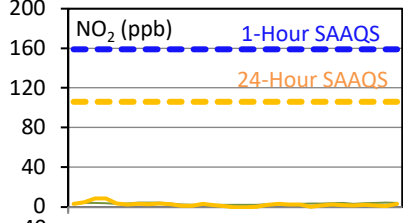
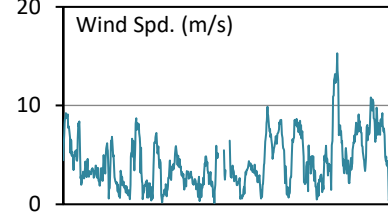
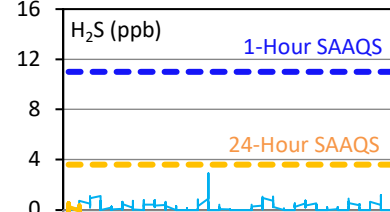
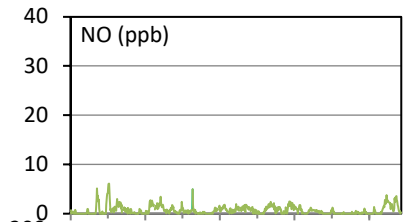
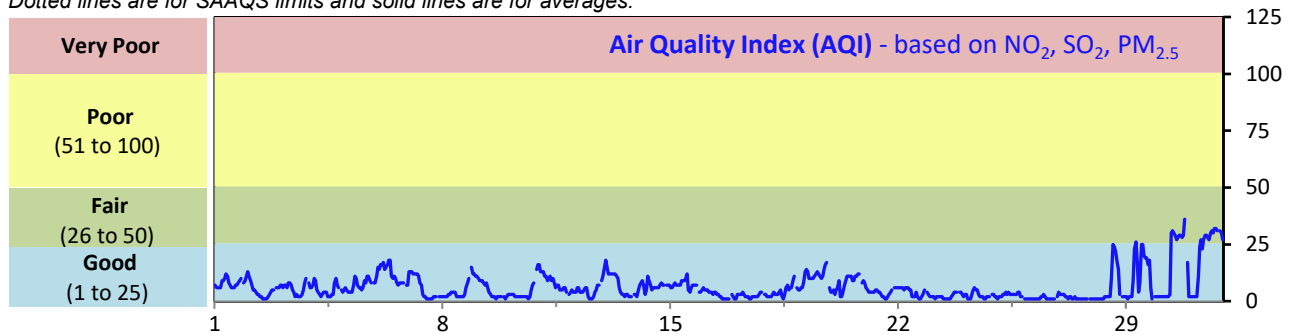
SESAA Oxbow Station - January 2023 Summary Report

Pollutants		Month Records		24-Hour Records				1-Hour Records			
Name	Conc. Unit	Avg. Conc.	Uptime	Maximum		SAAQS Standard	Exceed Days	Maximum		SAAQS Standard	Exceed Hours
				Conc.	Time			Conc.	Time		
NO	ppb	0.7	100.0%	1.6	Jan-30	-	-	6.1	Jan-04 14:00	-	-
NO ₂	ppb	2.4	100.0%	8.5	Jan-4	106	0	18.2	Jan-03 19:00	159	0
NO _x	ppb	3.0	100.0%	10.2	Jan-4	-	-	18.2	Jan-03 19:00	-	-
SO ₂	ppb	1.5	100.0%	3.9	Jan-4	48	0	19.3	Jan-04 21:00	172	0
H ₂ S	ppb	0.2	100.0%	0.5	Jan-3	3.6	0	2.9	Jan-14 01:00	11	0
PM _{2.5}	ug/m ³	8	100.0%	29	Jan-31	28	1	53	Jan-30 19:00	-	-

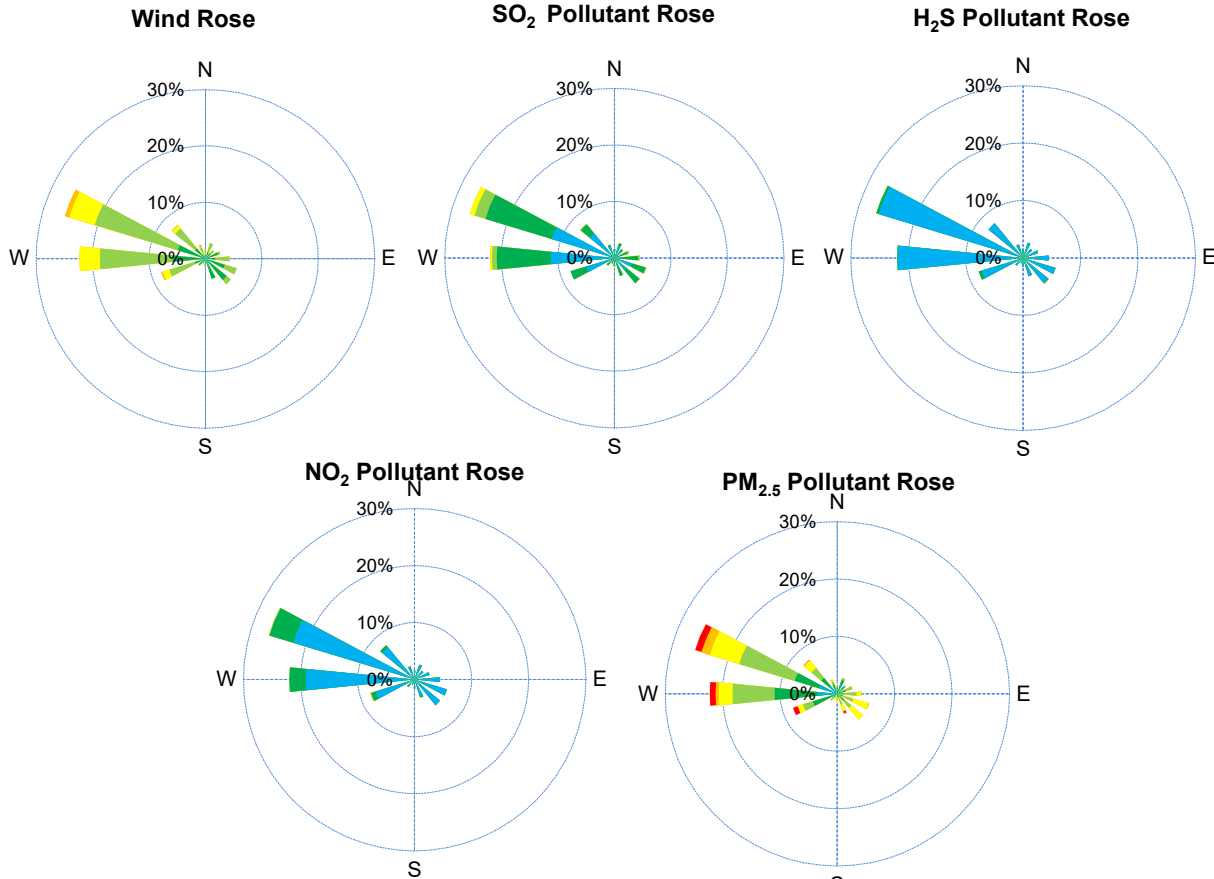
SAAQS: Saskatchewan Ambient Air Quality Standards

* Air Quality Standard refers to Saskatchewan Ambient Air Quality Standards (SAAQS).

* Dotted lines are for SAAQS limits and solid lines are for averages.



SESAA Oxbow Station - January 2023 Summary Report



Parameters	Unit	Color Code for Wind Spd & Pollutant Conc. Class						
Wind Speed	m/s	0.3 ≤ WS < 1.4	1.4 ≤ WS < 3.1	3.1 ≤ WS < 7.8	7.8 ≤ WS < 10.8	10.8 ≤ WS < 13.6	WS ≥ 13.6	
SO ₂	ppb	0 ≤ C < 1	1 ≤ C < 5	5 ≤ C < 10	10 ≤ C < 57	57 ≤ C < 172	C ≥ 172	
NO ₂	ppb	0 ≤ C < 5	5 ≤ C < 15	15 ≤ C < 30	30 ≤ C < 100	100 ≤ C < 212	C ≥ 212	
H ₂ S	ppb	0 ≤ C < 1	1 ≤ C < 3.6	3.6 ≤ C < 5	5 ≤ C < 8	8 ≤ C < 10.8	C ≥ 10.8	
PM _{2.5}	ug/m ³	0 ≤ C < 2	2 ≤ C < 4	4 ≤ C < 10	10 ≤ C < 20	20 ≤ C < 30	C ≥ 30	

Monthly Update

*All data has been slope, intercept, and baseline corrected. Data may change after validation process.

*All compliance parameters were within the Saskatchewan Ambient Air Quality Standards with the exception of a 24-hour PM_{2.5} exceedance

*All compliance parameters had greater than 90% operational uptime.

Exceedance Summary

24-hour Exceedance Information			Summary of Other Parameters During Exceedance								
Pollutant	24-hr Avg Conc.	Exceedance Date mmm-dd	WS m/s	WD deg	AQI -	Rain mm	ET C	SO ₂ ppb	NO ₂ ppb	H ₂ S ppb	PM _{2.5} ug/m ³
PM _{2.5}	29	Jan-31	4.5	252	22	0.0	-21.2	1.8	3.0	-	29

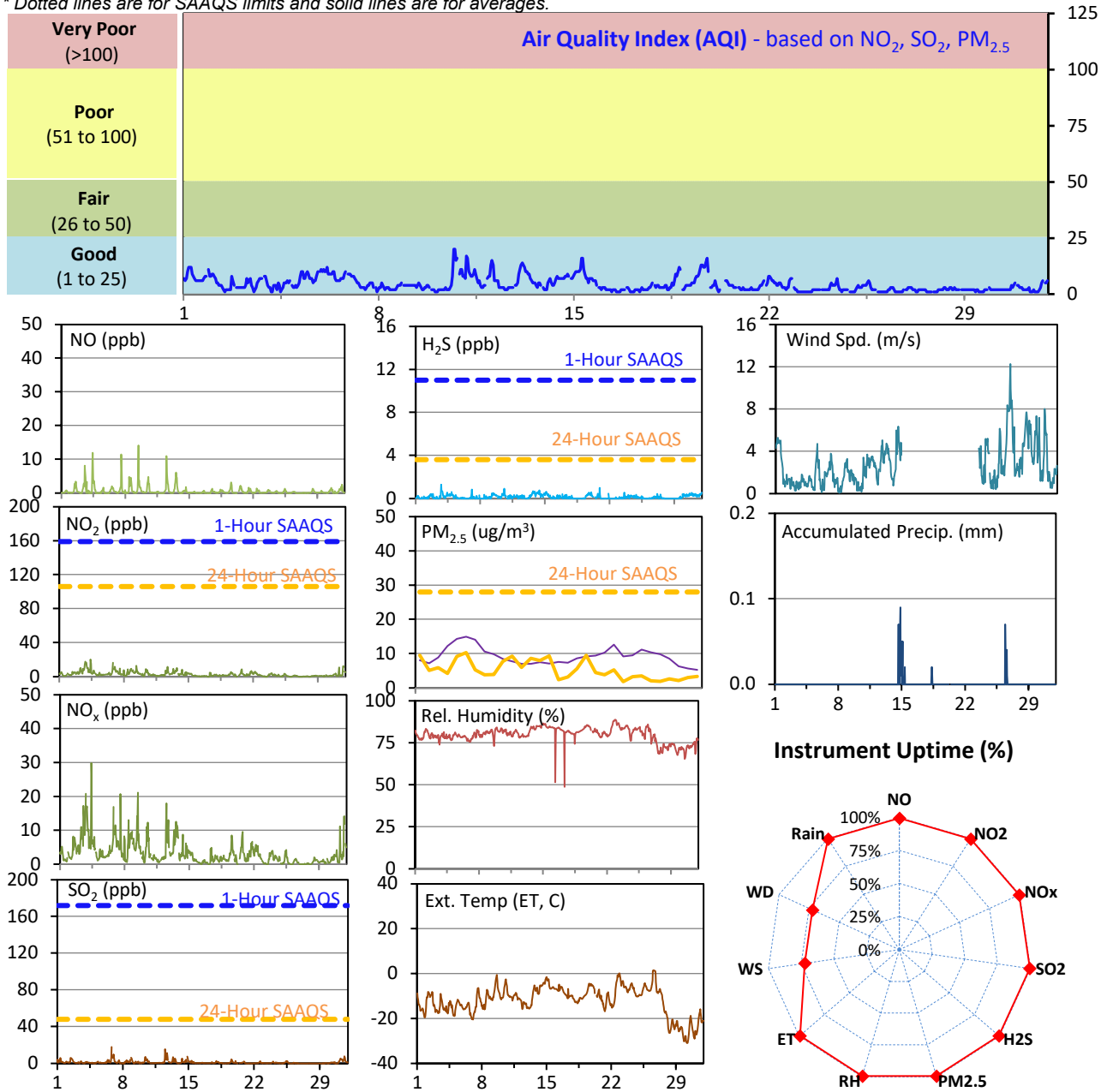
SESAA Stoughton Station - January 2023 Summary Report

Pollutants		Month Records		24-Hour Records				1-Hour Records			
Name	Conc. Unit	Avg. Conc.	Uptime	Maximum		SAAQS Standard	Exceed Days	Maximum		SAAQS Standard	Exceed Hours
				Conc.	Time			Conc.	Time		
NO	ppb	0.6	99.4%	1.6	Jan-9	-	-	14.2	Jan-09 10:00	-	-
NO ₂	ppb	2.6	99.4%	8.2	Jan-3	106	0	20.1	Jan-04 09:00	159	0
NO _x	ppb	3.2	99.4%	9.7	Jan-3	-	-	29.8	Jan-04 09:00	-	-
SO ₂	ppb	1.0	99.4%	3.3	Jan-12	48	0	18.0	Jan-06 19:00	172	0
H ₂ S	ppb	0.1	99.4%	0.4	Jan-14	3.6	0	1.3	Jan-03 18:00	11	0
PM _{2.5}	ug/m3	5	99.5%	10	Jan-6	28	0	24	Jan-10 16:00	-	-

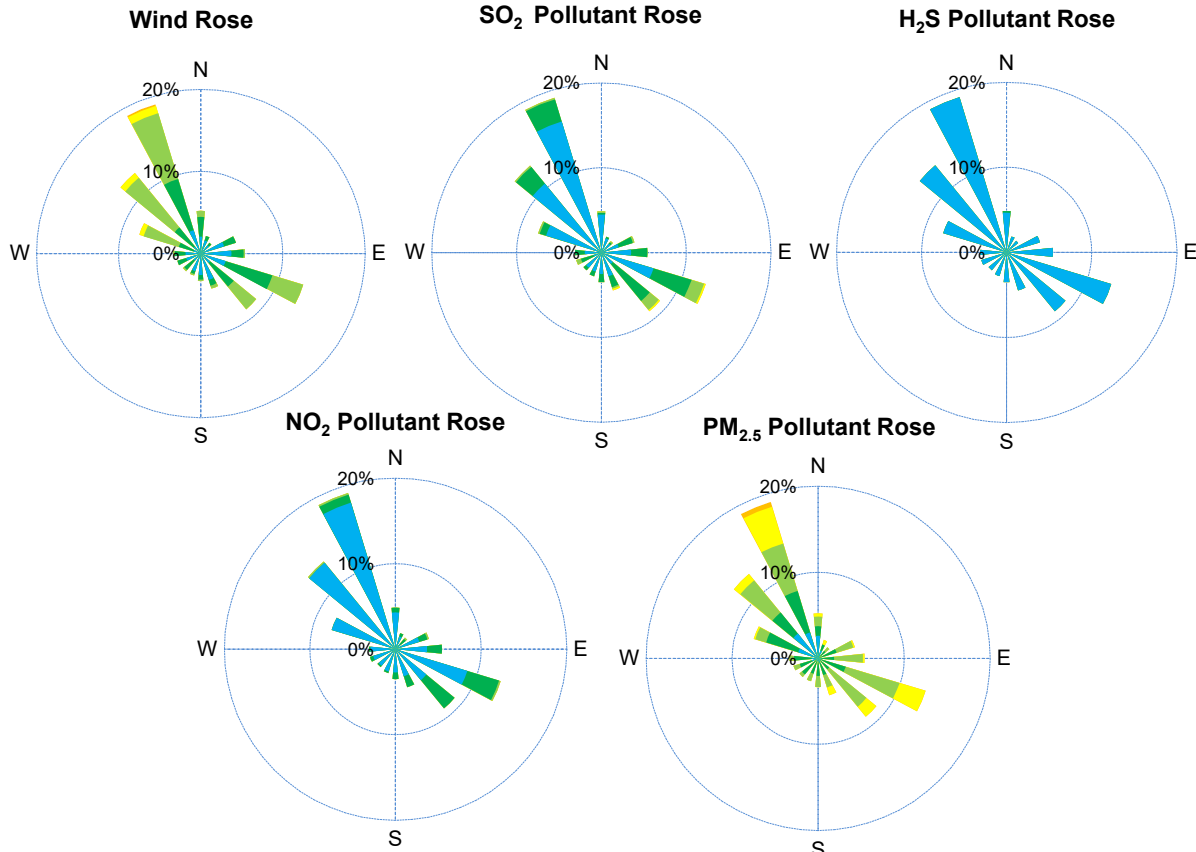
SAAQS: Saskatchewan Ambient Air Quality Standards

* Air Quality Standard refers to Saskatchewan Ambient Air Quality Standards (SAAQS).

* Dotted lines are for SAAQS limits and solid lines are for averages.



SESAA Stoughton Station - January 2023 Summary Report



Parameters	Unit	Color Code for Wind Spd & Pollutant Conc. Class					
Wind Speed	m/s	$0.3 \leq WS < 1.4$	$1.4 \leq WS < 3.1$	$3.1 \leq WS < 7.8$	$7.8 \leq WS < 10.8$	$10.8 \leq WS < 13.6$	$WS \geq 13.6$
SO ₂	ppb	$0 \leq C < 1$	$1 \leq C < 5$	$5 \leq C < 10$	$10 \leq C < 57$	$57 \leq C < 172$	$C \geq 172$
NO ₂	ppb	$0 \leq C < 5$	$5 \leq C < 15$	$15 \leq C < 30$	$30 \leq C < 100$	$100 \leq C < 212$	$C \geq 212$
H ₂ S	ppb	$0 \leq C < 1$	$1 \leq C < 3.6$	$3.6 \leq C < 5$	$5 \leq C < 8$	$8 \leq C < 10.8$	$C \geq 10.8$
PM _{2.5}	ug/m ³	$0 \leq C < 2$	$2 \leq C < 4$	$4 \leq C < 10$	$10 \leq C < 20$	$20 \leq C < 30$	$C \geq 30$

Monthly Update

*All data has been slope, intercept, and baseline corrected. Data may change after validation process.

*All compliance parameters were within the Saskatchewan Ambient Air Quality Standards.

*All compliance parameters were greater than 90% operational with the exception of WS/WD

*204 hours of data is flagged as "frozen" for all WS/WD due to build up of frost on the wind head.

*4 hours of data is flagged as "power failure" for all parameters due to intermittent power issues on site.

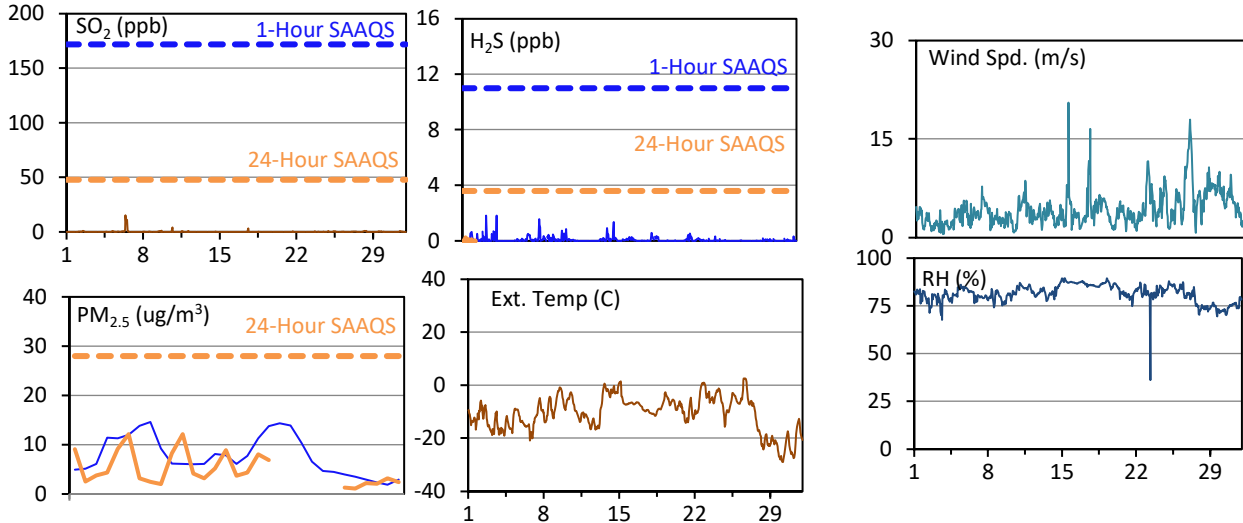
SESAA Torquay Station - January 2023 Summary Report

Pollutants		Month Records		24-Hour Records				1-Hour Records			
Name	Conc. Unit	Avg. Conc.	Uptime	Maximum		SAAQS Standard	Exceed Days	Maximum		SAAQS Standard	Exceed Hours
				Conc.	Time			Conc.	Time		
SO ₂	ppb	0.1	100.0%	< 0.1	Jan-10	48	0	15.3	Jan-06 09:00	172	0
H ₂ S	ppb	0.1	100.0%	0.3	Jan-8	3.6	0	13.9	Jan-04 04:00	11	0
PM _{2.5}	ug/m ³	5	83.5%	12	Jan-11	28	0	39	Jan-10 18:00	-	-

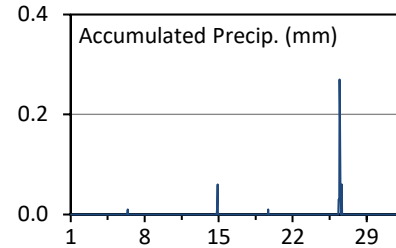
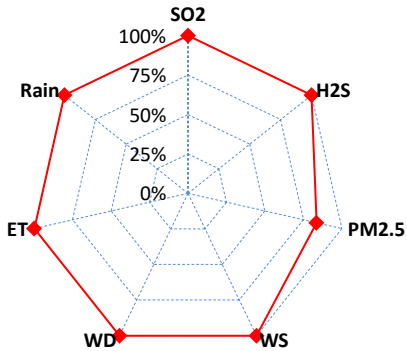
SAAQS: Saskatchewan Ambient Air Quality Standards

* Air Quality Standard refers to Saskatchewan Ambient Air Quality Standards (SAAQS).

* Dotted lines are for SAAQS limits and solid lines are for averages.



Instrument Uptime (%)



Monthly Update

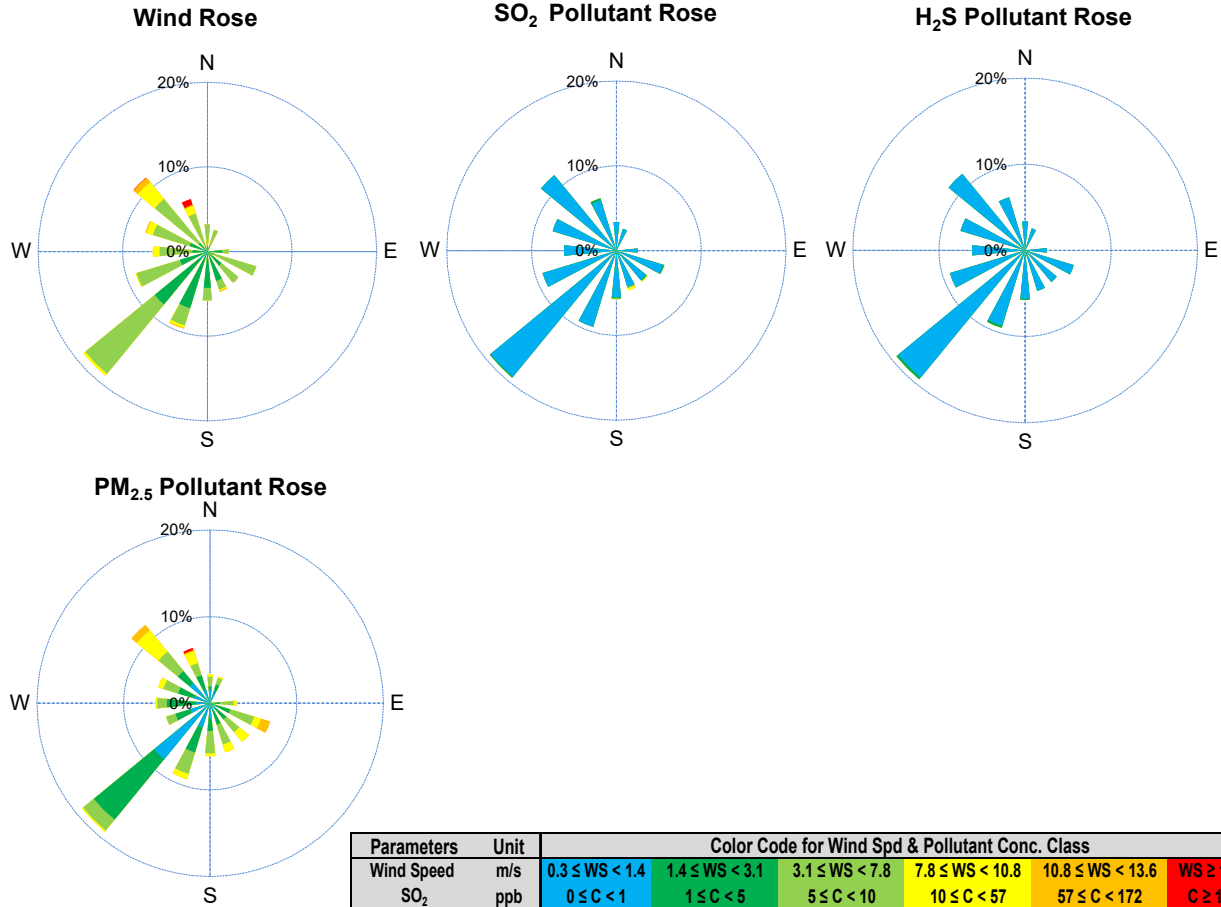
*All data has been slope, intercept, and baseline corrected. Data may change after validation process.

*All compliance parameters were within the Saskatchewan Ambient Air Quality Standards.

*All compliance parameters are above 90% operational with the exception of PM_{2.5}

*123 hours of data for all parameters is flagged as "analyzer failure" due to issues with the analyzer flatlining.

SESAA Torquay Station - January 2023 Summary Report



Parameters	Unit	Color Code for Wind Spd & Pollutant Conc. Class					
		0.3 ≤ WS < 1.4	1.4 ≤ WS < 3.1	3.1 ≤ WS < 7.8	7.8 ≤ WS < 10.8	10.8 ≤ WS < 13.6	WS ≥ 13.6
SO ₂	ppb	0 ≤ C < 1	1 ≤ C < 5	5 ≤ C < 10	10 ≤ C < 57	57 ≤ C < 172	C ≥ 172
NO ₂	ppb	0 ≤ C < 5	5 ≤ C < 15	15 ≤ C < 30	30 ≤ C < 100	100 ≤ C < 212	C ≥ 212
O ₃	ppb	0 ≤ C < 10	10 ≤ C < 20	20 ≤ C < 40	40 ≤ C < 60	60 ≤ C < 82	C ≥ 82
H ₂ S	ppb	0 ≤ C < 1	1 ≤ C < 3.6	3.6 ≤ C < 5	5 ≤ C < 8	8 ≤ C < 10.8	C ≥ 10.8
PM _{2.5}	ug/m ³	0 ≤ C < 2	2 ≤ C < 4	4 ≤ C < 10	10 ≤ C < 20	20 ≤ C < 30	C ≥ 30

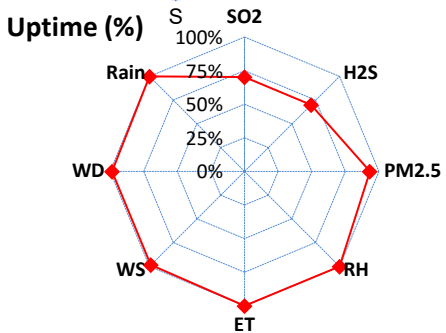
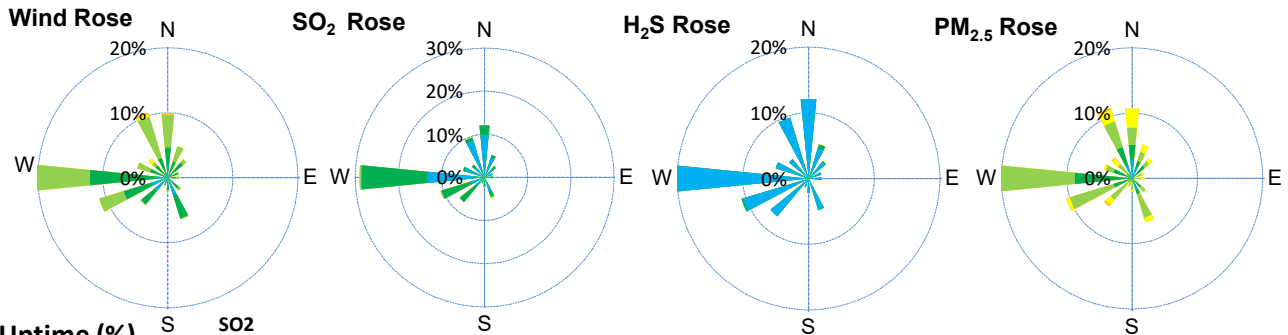
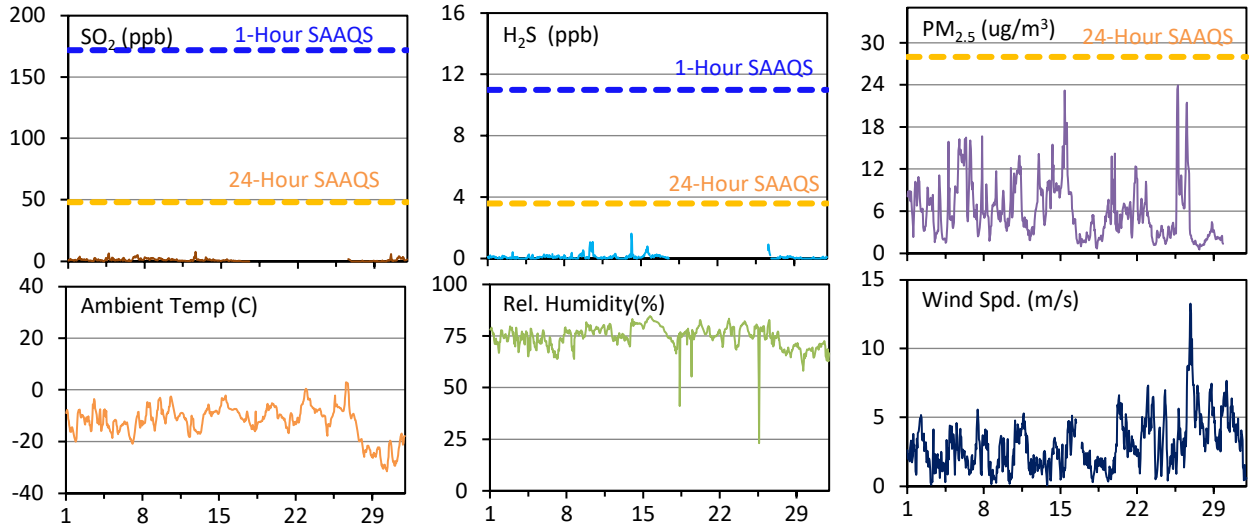
SESAA Wauchope Station - January 2023 Summary Report

Pollutants		Month Records		24-Hour Records				1-Hour Records			
Name	Conc. Unit	Avg. Conc.	Uptime	Maximum		SAAQS Objective	Exceed Days	Maximum		SAAQS Objective	Exceed Hours
				Conc.	Time			Conc.	Time		
SO ₂	ppb	1.0	70.1%	2.5	Jan-7	48	0	7.8	Jan-12 15:00	172	0
H ₂ S	ppb	0.1	70.1%	0.3	Jan-10	3.6	0	1.6	Jan-14 03:00	11	0
PM _{2.5}	ug/m ³	6	93.3%	13	Jan-15	28	0	24	Jan-25 17:00	-	-

SAAQS: Saskatchewan Ambient Air Quality Standards

* Air Quality Standard refers to Saskatchewan Ambient Air Quality Standards (SAAQS).

* Dotted lines are for SAAQS limits and solid lines are for averages.



Parameters	Unit	Color Code for Wind Spd & Pollutant Conc. Class					
Wind Speed	m/s	0.3 ≤ WS < 1.4	1.4 ≤ WS < 3.1	3.1 ≤ WS < 7.8	7.8 ≤ WS < 10.8	10.8 ≤ WS < 13.6	WS ≥ 13.6
SO ₂	ppb	0 ≤ C < 1	1 ≤ C < 5	5 ≤ C < 10	10 ≤ C < 57	57 ≤ C < 172	C ≥ 172
H ₂ S	ppb	0 ≤ C < 1	1 ≤ C < 3.6	3.6 ≤ C < 5	5 ≤ C < 8	8 ≤ C < 10.8	C ≥ 10.8
PM _{2.5}	ug/m ³	0 ≤ C < 2	2 ≤ C < 4	4 ≤ C < 10	10 ≤ C < 20	20 ≤ C < 30	C ≥ 30

Monthly Update

- * All data has been slope, intercept, and baseline corrected. Data may change after validation process.
- * All compliance parameters were within the Saskatchewan Ambient Air Quality Standards.
- * All compliance parameters were greater than 90% operational with the exception of SO₂ and H₂S.
- * 216 hours of data for SO₂ and H₂S was flagged as "analyzer failure" due to a pump failure.
- * 50 hours of data for PM_{2.5} was flagged as "analyzer failure" due to analyzer flatlining.

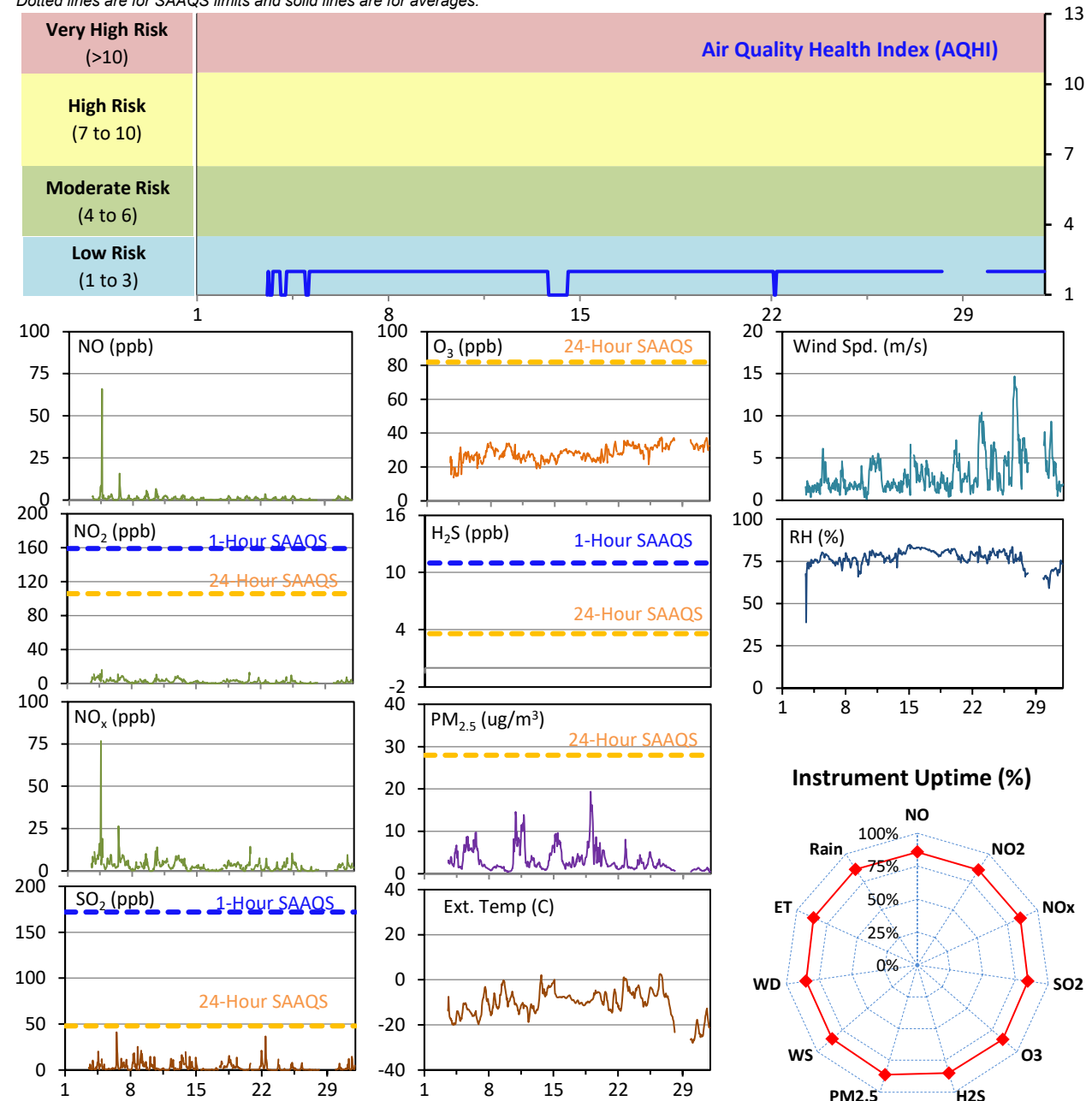
SESAA Weyburn Station - January 2023 Summary Report

Pollutants		Month Records		24-Hour Records				1-Hour Records			
Name	Conc. Unit	Avg. Conc.	Uptime	Maximum		SAAQS Standard	Exceed Days	Maximum		SAAQS Standard	Exceed Hours
				Conc.	Time			Conc.	Time		
NO	ppb	0.9	85.8%	4.8	Jan-4	-	-	66.0	Jan-04 14:00	-	-
NO ₂	ppb	2.2	85.8%	6.3	Jan-4	106	0	16.2	Jan-04 18:00	159	0
NO _x	ppb	3.1	85.8%	11.1	Jan-4	-	-	76.9	Jan-04 14:00	-	-
SO ₂	ppb	2.9	84.5%	6.9	Jan-9	48	0	41.0	Jan-06 12:00	172	0
O ₃	ppb	28	85.8%	34	Jan-26	-	-	38	Jan-26 17:00	82	0
H ₂ S	ppb	0.5	85.1%	1.8	Jan-4	3.6	0	5.6	Jan-08 07:00	11	0
PM _{2.5}	ug/m3	3	86.3%	9	Jan-11	28	0	19	Jan-19 00:00	-	-

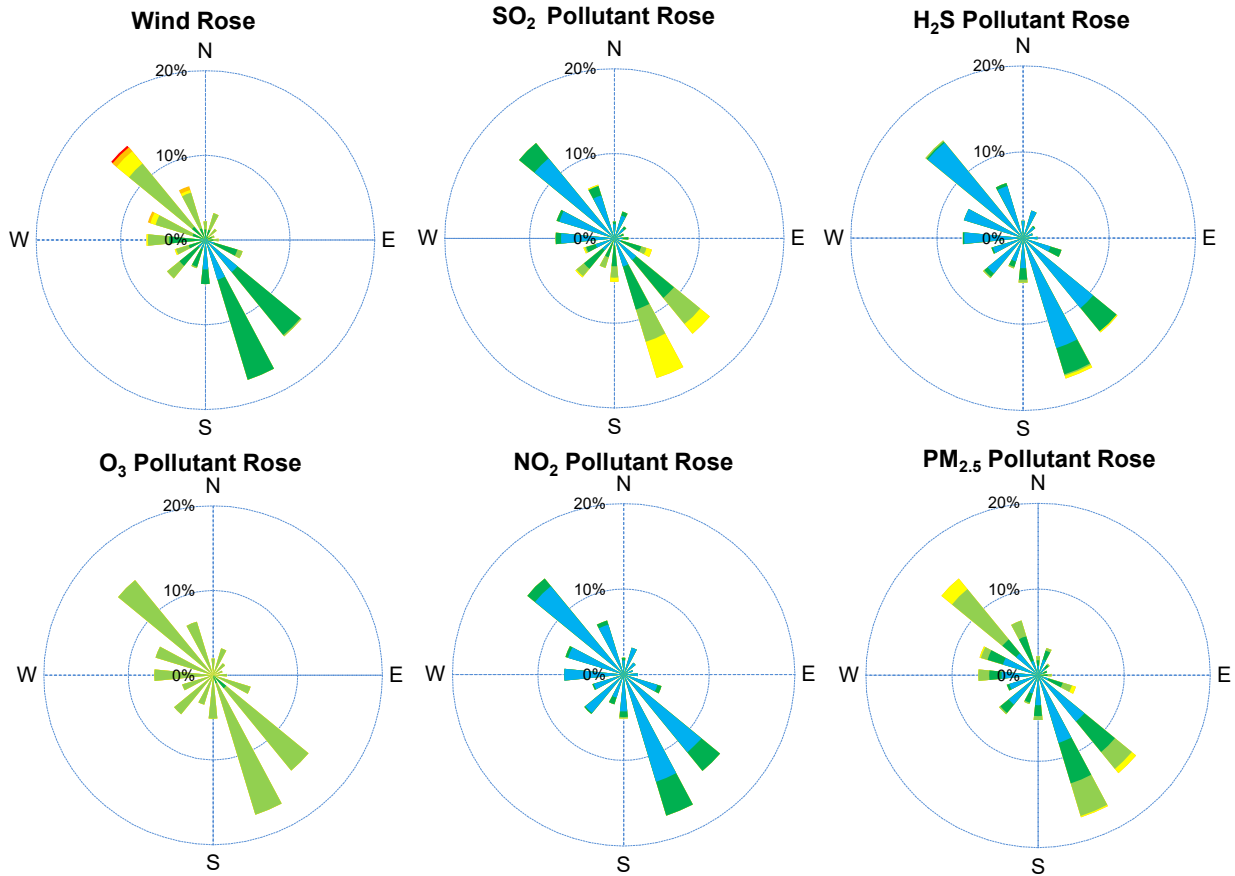
SAAQS: Saskatchewan Ambient Air Quality Standards

* Air Quality Standard refers to Saskatchewan Ambient Air Quality Standards (SAAQS).

* Dotted lines are for SAAQS limits and solid lines are for averages.



SESAA Weyburn Station - January 2023 Summary Report



Parameters	Unit	Color Code for Wind Spd & Pollutant Conc. Class						
Wind Speed	m/s	$0.3 \leq WS < 1.4$	$1.4 \leq WS < 3.1$	$3.1 \leq WS < 7.8$	$7.8 \leq WS < 10.8$	$10.8 \leq WS < 13.6$	$WS \geq 13.6$	
SO ₂	ppb	$0 \leq C < 1$	$1 \leq C < 5$	$5 \leq C < 10$	$10 \leq C < 57$	$57 \leq C < 172$	$C \geq 172$	
NO ₂	ppb	$0 \leq C < 5$	$5 \leq C < 15$	$15 \leq C < 30$	$30 \leq C < 100$	$100 \leq C < 212$	$C \geq 212$	
O ₃	ppb	$0 \leq C < 10$	$10 \leq C < 20$	$20 \leq C < 40$	$40 \leq C < 60$	$60 \leq C < 82$	$C \geq 82$	
H ₂ S	ppb	$0 \leq C < 1$	$1 \leq C < 3.6$	$3.6 \leq C < 5$	$5 \leq C < 8$	$8 \leq C < 10.8$	$C \geq 10.8$	
PM _{2.5}	ug/m ³	$0 \leq C < 2$	$2 \leq C < 4$	$4 \leq C < 10$	$10 \leq C < 20$	$20 \leq C < 30$	$C \geq 30$	

Monthly Update

- *All data has been slope, intercept, and baseline corrected. Data may change after validation process.
- *All compliance parameters were within the Saskatchewan Ambient Air Quality Standards.
- *All compliance parameters were less than 90% operational.
- *102 hours of data for all parameters is flagged as "power failure" due to intermittent power interruptions on site.