

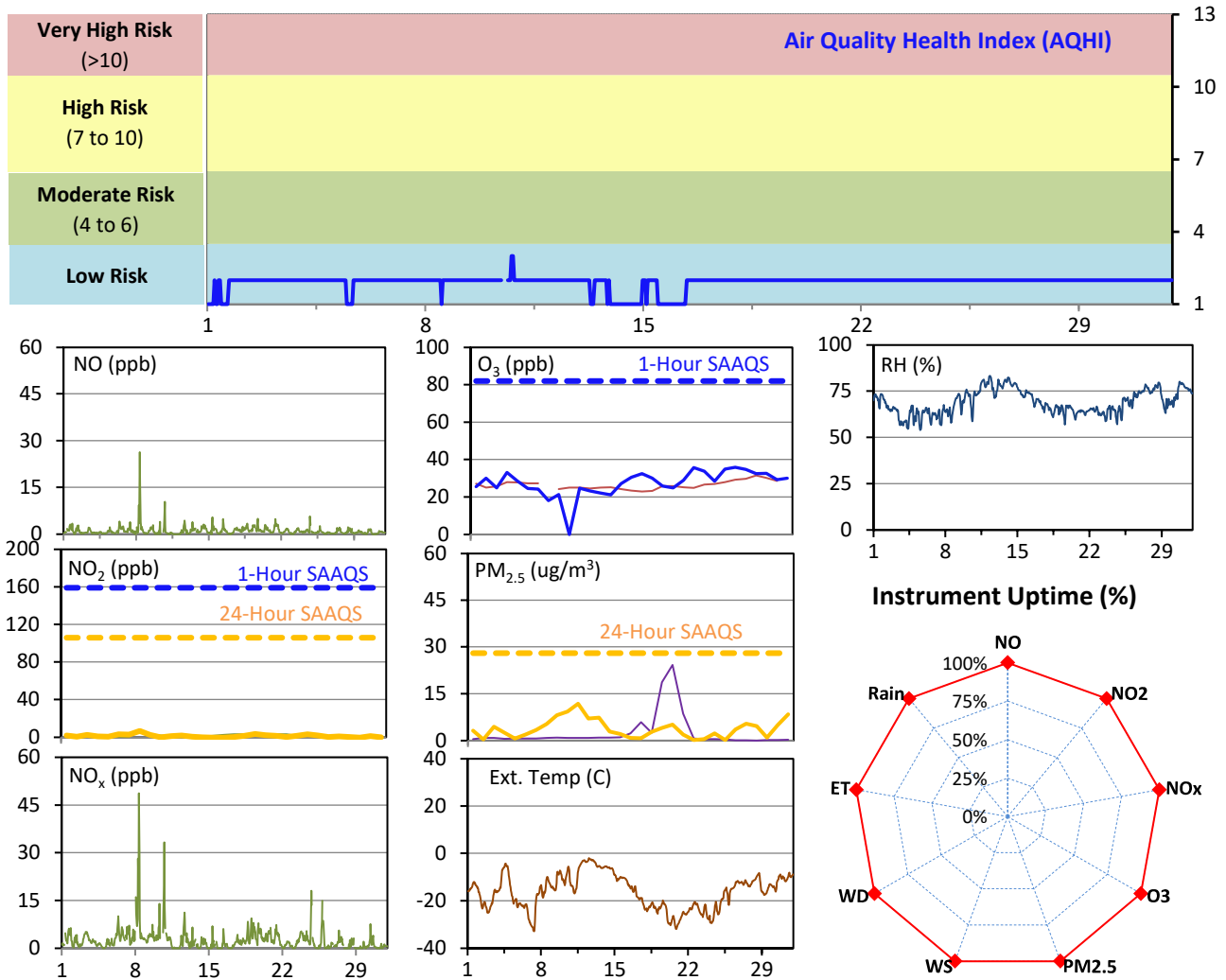
SESAA Esterhazy Station - December 2022 Summary Report

Pollutants		Month Records		24-Hour Records				1-Hour Records			
Name	Conc. Unit	Avg. Conc.	Uptime	Maximum		SAAQS Standard	Exceed Days	Maximum		SAAQS Standard	Exceed Hours
				Conc.	Time			Conc.	Time		
NO	ppb	1.0	100.0%	3.4	Dec-8	-	-	26.4	Dec-08 08:00	-	-
NO ₂	ppb	1.6	100.0%	6.8	Dec-8	106	0	23.0	Dec-10 18:00	159	0
NO _x	ppb	2.5	100.0%	10.2	Dec-8	-	-	48.7	Dec-08 08:00	-	-
O ₃	ppb	28	100.0%	36	Dec-26	-	-	40	Dec-25 11:00	82	0
PM _{2.5}	ug/m3	4	100.0%	12	Dec-11	28	0	24	Dec-01 19:00	-	-

SAAQS: Saskatchewan Ambient Air Quality Standards

* Air Quality Standard refers to Saskatchewan Ambient Air Quality Standards (SAAQS).

* Dotted lines are for SAAQS limits and solid lines are for averages.



Monthly Update

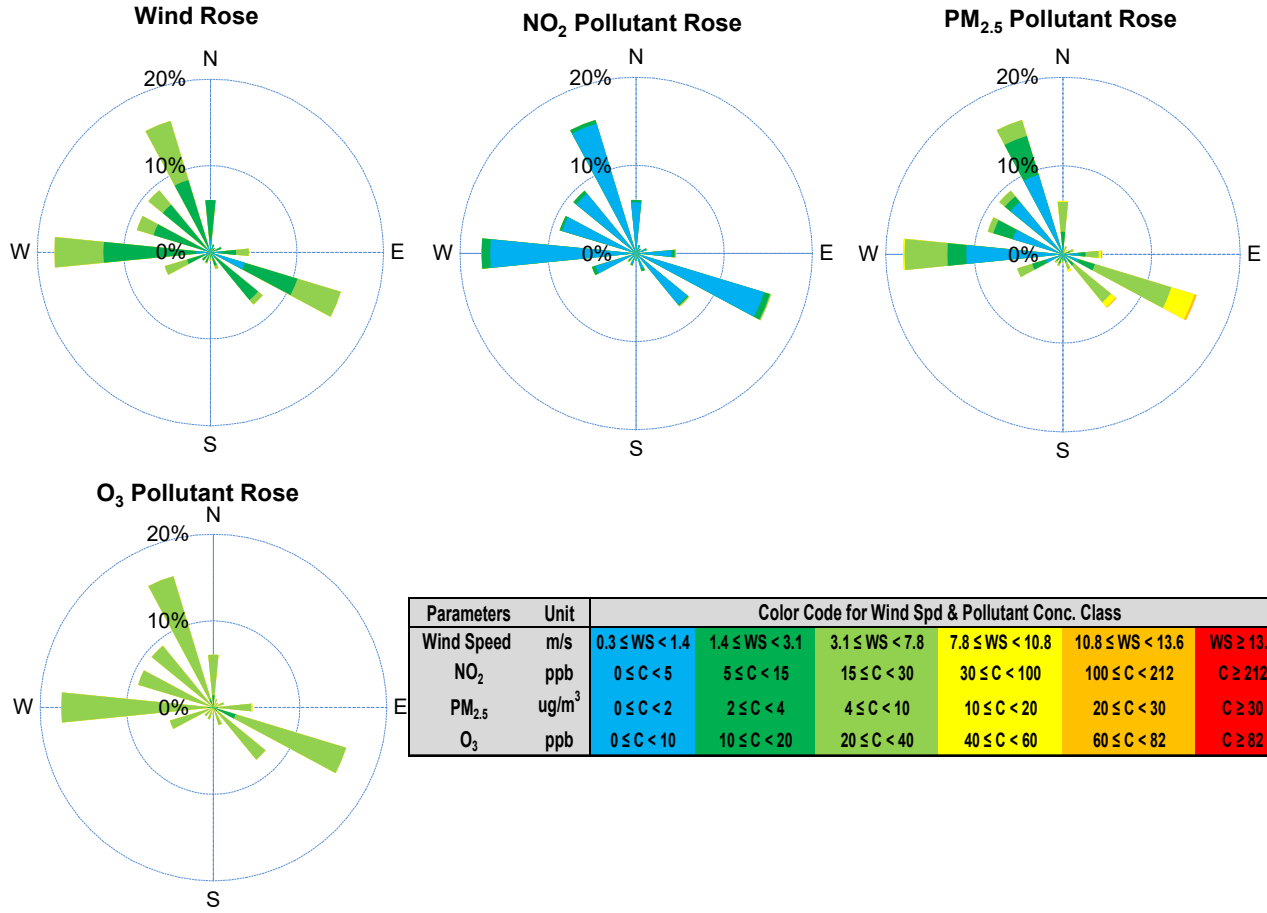
*All data has been slope, intercept, and baseline corrected. Data may change after validation process.

*All compliance parameters were within the Saskatchewan Ambient Air Quality Standards.

*All compliance parameters were greater than 90% operational.

*Routine quarterly calibrations were completed on Dec 10.

SESAA Esterhazy Station - December 2022 Summary Report



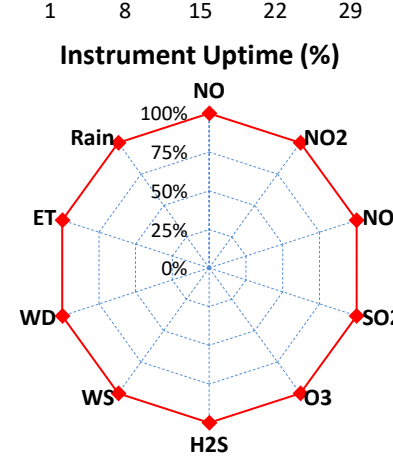
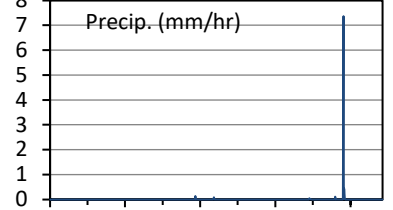
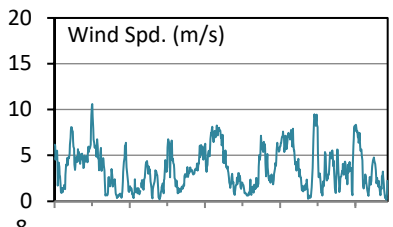
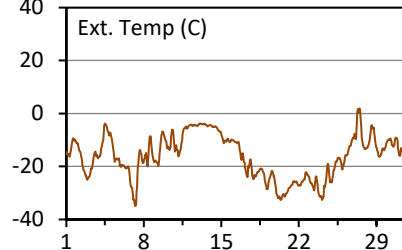
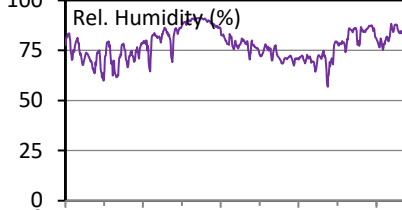
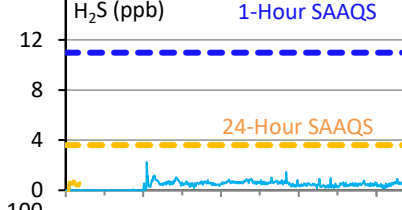
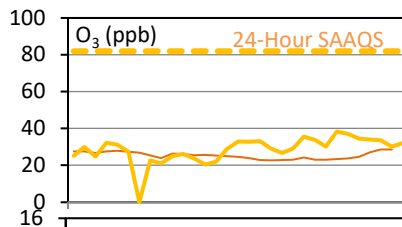
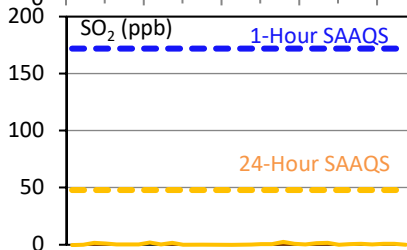
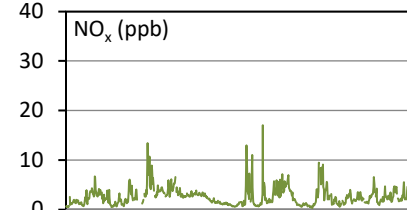
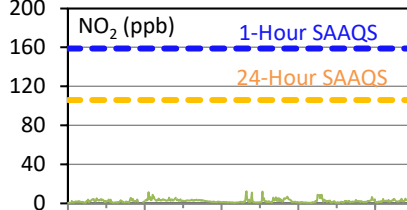
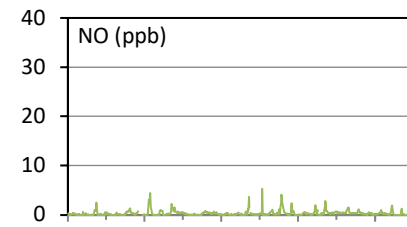
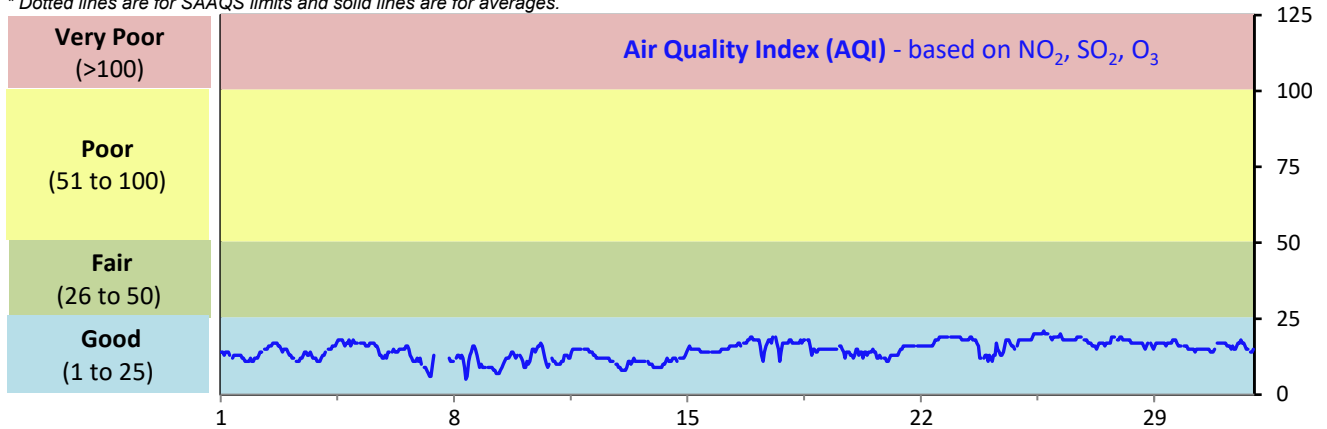
SESAA Glen Ewen Station - December 2022 Summary Report

Pollutants		Month Records		24-Hour Records				1-Hour Records			
Name	Conc. Unit	Avg. Conc.	Uptime	Maximum		SAAQS Standard	Exceed Days	Maximum		SAAQS Standard	Exceed Hours
				Conc.	Time			Conc.	Time		
NO	ppb	0.3	100.0%	1.0	Dec-20	-	-	5.3	Dec-18 17:00	-	-
NO ₂	ppb	2.3	100.0%	4.9	Dec-8	106	0	12.3	Dec-17 06:00	159	0
NO _x	ppb	2.6	100.0%	5.8	Dec-8	-	-	17.1	Dec-18 17:00	-	-
SO ₂	ppb	0.5	100.0%	2.4	Dec-20	48	0	11.2	Dec-08 12:00	172	0
O ₃	ppb	29	100.0%	38	Dec-25	-	-	41	Dec-25 16:00	82	0
H ₂ S	ppb	0.4	100.0%	0.7	Nov-24	3.6	0	2.2	Dec-08 07:00	11	0

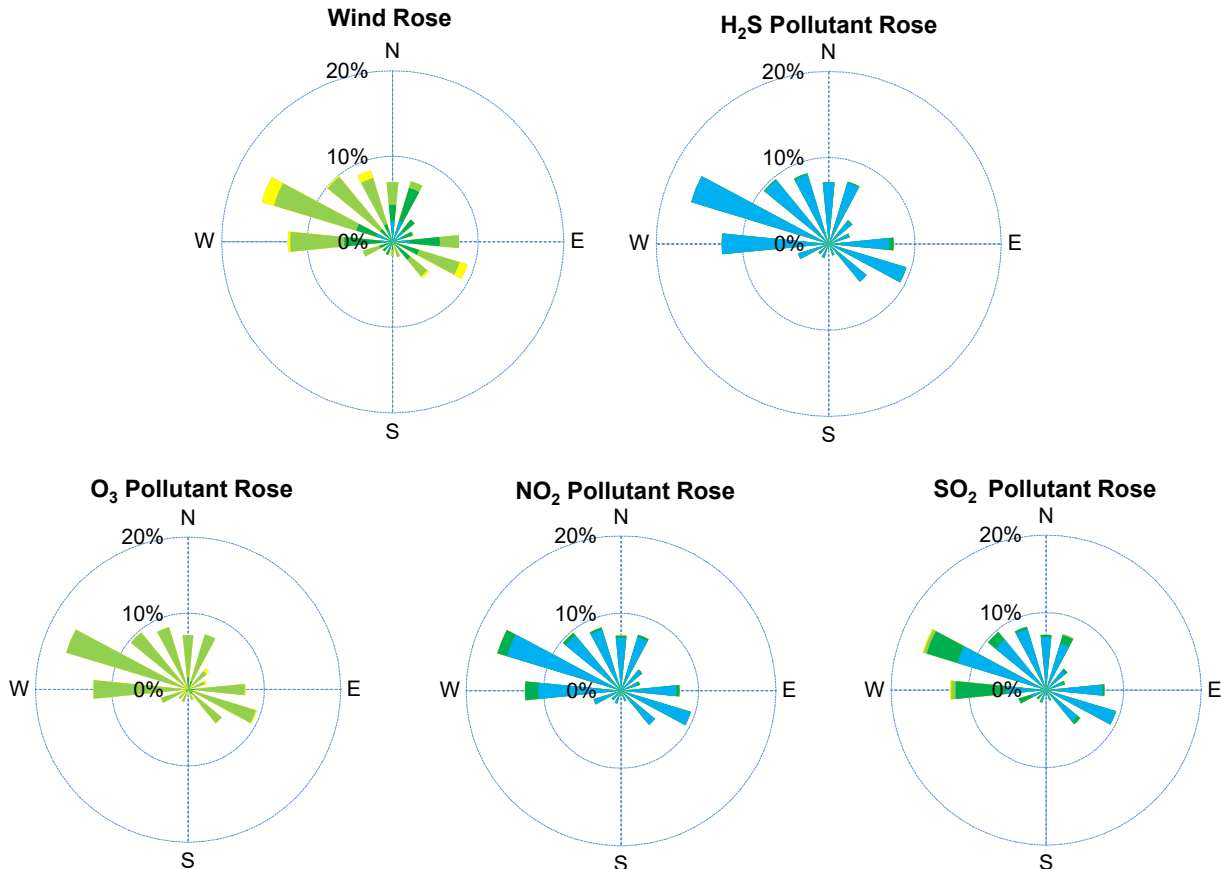
SAAQS: Saskatchewan Ambient Air Quality Standards

* Air Quality Standard refers to Saskatchewan Ambient Air Quality Standards (SAAQS).

* Dotted lines are for SAAQS limits and solid lines are for averages.



SESAA Glen Ewen Station - December 2022 Summary Report



Parameters	Unit	Color Code for Wind Spd & Pollutant Conc. Class						
Wind Speed	m/s	0.3 ≤ WS < 1.4	1.4 ≤ WS < 3.1	3.1 ≤ WS < 7.8	7.8 ≤ WS < 10.8	10.8 ≤ WS < 13.6	WS ≥ 13.6	
SO ₂	ppb	0 ≤ C < 1	1 ≤ C < 5	5 ≤ C < 10	10 ≤ C < 57	57 ≤ C < 172	C ≥ 172	
NO ₂	ppb	0 ≤ C < 5	5 ≤ C < 15	15 ≤ C < 30	30 ≤ C < 100	100 ≤ C < 212	C ≥ 212	
O ₃	ppb	0 ≤ C < 10	10 ≤ C < 20	20 ≤ C < 40	40 ≤ C < 60	60 ≤ C < 82	C ≥ 82	
H ₂ S	ppb	0 ≤ C < 1	1 ≤ C < 3.6	3.6 ≤ C < 5	5 ≤ C < 8	8 ≤ C < 10.8	C ≥ 10.8	

Monthly Update

- *All data has been slope, intercept, and baseline corrected. Data may change after validation process.
- *All compliance parameters were within the Saskatchewan Ambient Air Quality Standards.
- *All compliance parameters were greater than 90% operational.
- *Routine quarterly calibrations were completed on Dec 7.

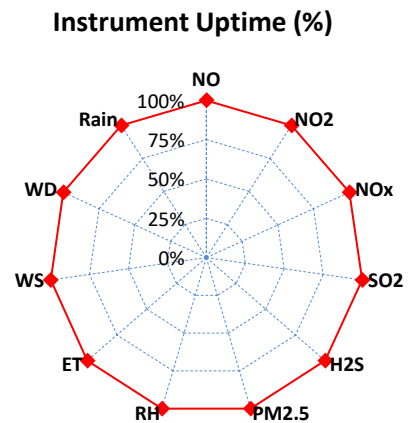
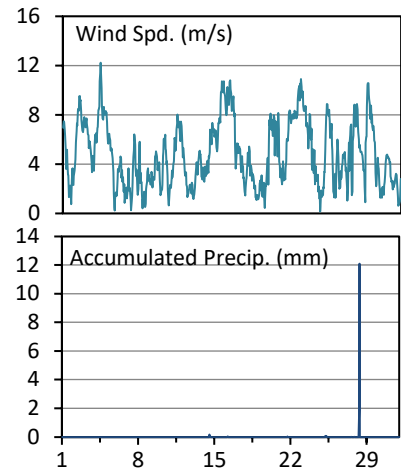
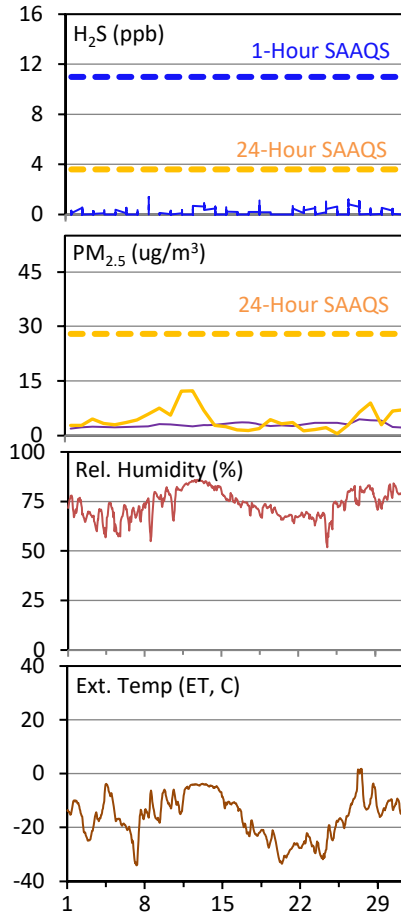
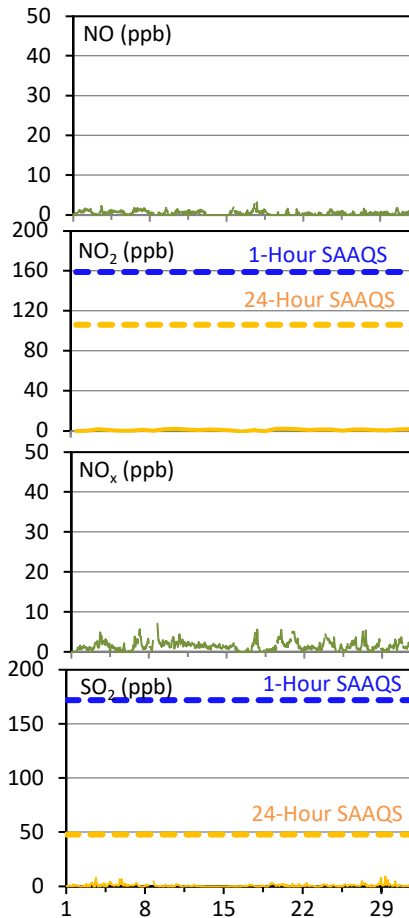
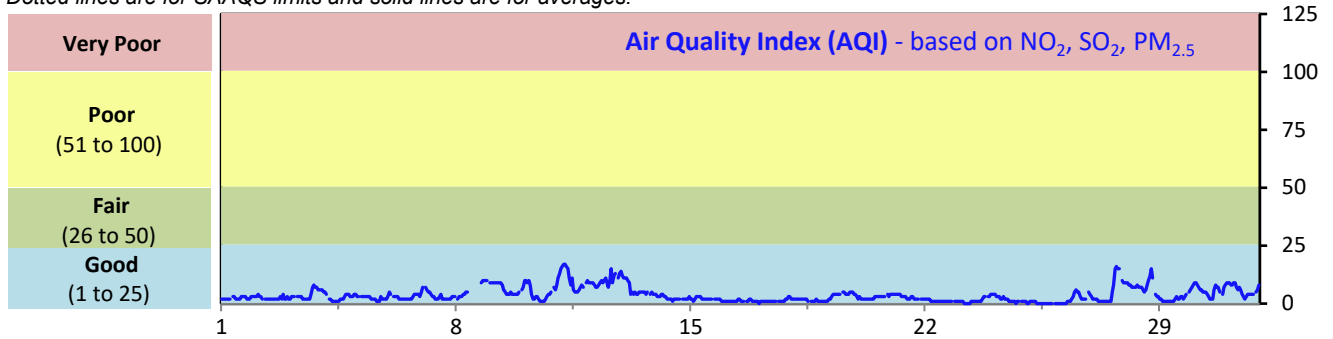
SESAA Oxbow Station - December 2022 Summary Report

Pollutants		Month Records		24-Hour Records				1-Hour Records			
Name	Conc. Unit	Avg. Conc.	Uptime	Maximum		SAAQS Standard	Exceed Days	Maximum		SAAQS Standard	Exceed Hours
				Conc.	Time			Conc.	Time		
NO	ppb	0.5	100.0%	1.1	Dec-7	-	-	3.2	Dec-17 18:00	-	-
NO ₂	ppb	1.1	100.0%	2.2	Dec-20	106	0	7.0	Dec-08 18:00	159	0
NO _x	ppb	1.5	100.0%	2.5	Dec-10	-	-	7.0	Dec-08 18:00	-	-
SO ₂	ppb	0.7	100.0%	2.3	Dec-29	48	0	9.3	Dec-29 08:00	172	0
H ₂ S	ppb	0.2	100.0%	0.7	Dec-27	3.6	0	1.4	Dec-08 06:00	11	0
PM _{2.5}	ug/m3	4	100.0%	12	Dec-12	28	0	20	Dec-11 05:00	-	-

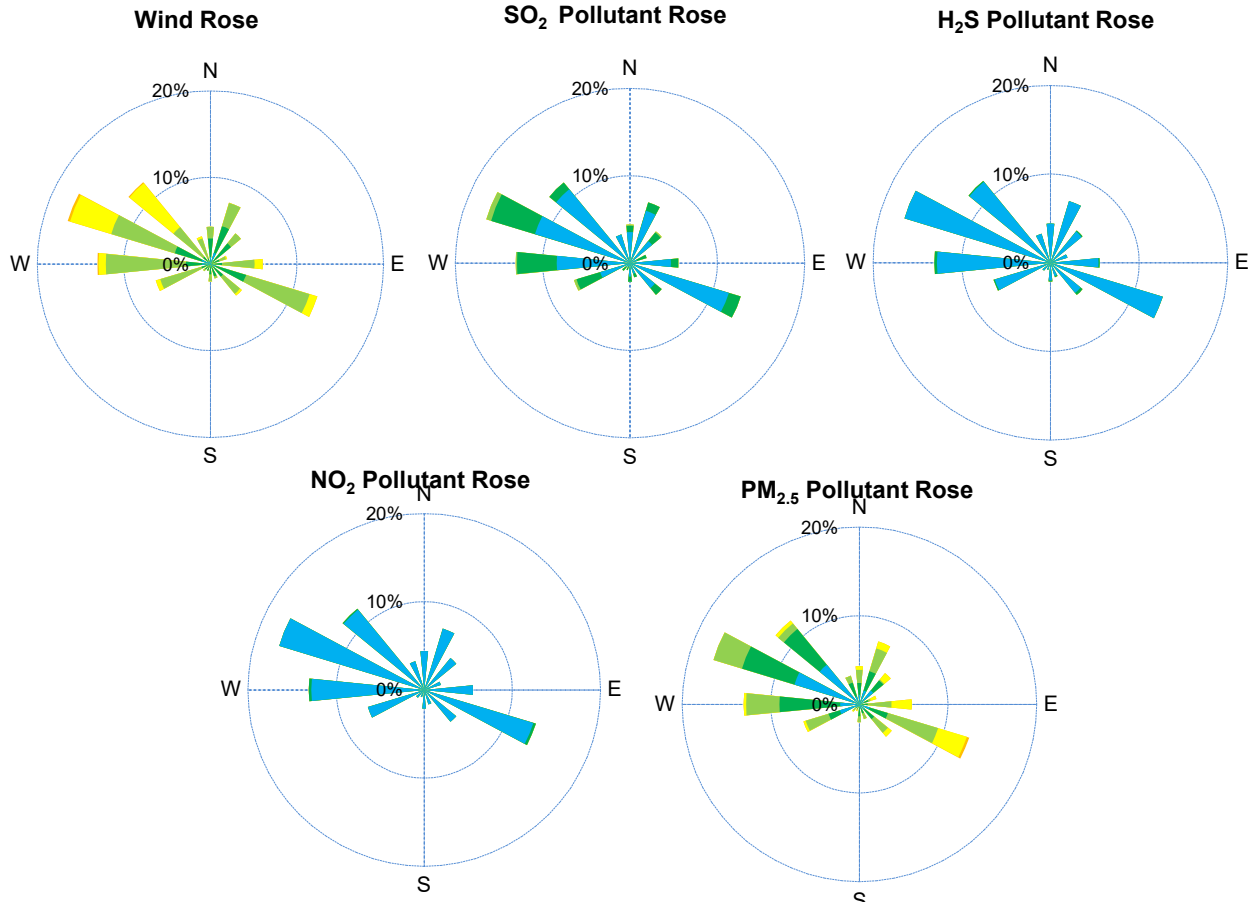
SAAQS: Saskatchewan Ambient Air Quality Standards

* Air Quality Standard refers to Saskatchewan Ambient Air Quality Standards (SAAQS).

* Dotted lines are for SAAQS limits and solid lines are for averages.



SESAA Oxbow Station - December 2022 Summary Report



Parameters	Unit	Color Code for Wind Spd & Pollutant Conc. Class					
Wind Speed	m/s	0.3 ≤ WS < 1.4	1.4 ≤ WS < 3.1	3.1 ≤ WS < 7.8	7.8 ≤ WS < 10.8	10.8 ≤ WS < 13.6	WS ≥ 13.6
SO ₂	ppb	0 ≤ C < 1	1 ≤ C < 5	5 ≤ C < 10	10 ≤ C < 57	57 ≤ C < 172	C ≥ 172
NO ₂	ppb	0 ≤ C < 5	5 ≤ C < 15	15 ≤ C < 30	30 ≤ C < 100	100 ≤ C < 212	C ≥ 212
H ₂ S	ppb	0 ≤ C < 1	1 ≤ C < 3.6	3.6 ≤ C < 5	5 ≤ C < 8	8 ≤ C < 10.8	C ≥ 10.8
PM _{2.5}	ug/m ³	0 ≤ C < 2	2 ≤ C < 4	4 ≤ C < 10	10 ≤ C < 20	20 ≤ C < 30	C ≥ 30

Monthly Update

- *All data has been slope, intercept, and baseline corrected. Data may change after validation process.
- *All compliance parameters were within the Saskatchewan Ambient Air Quality Standards.
- *All compliance parameters had greater than 90% operational uptime.
- *Routine quarterly calibrations were completed on Dec 8.

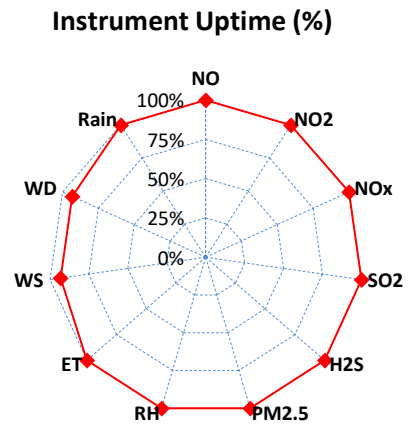
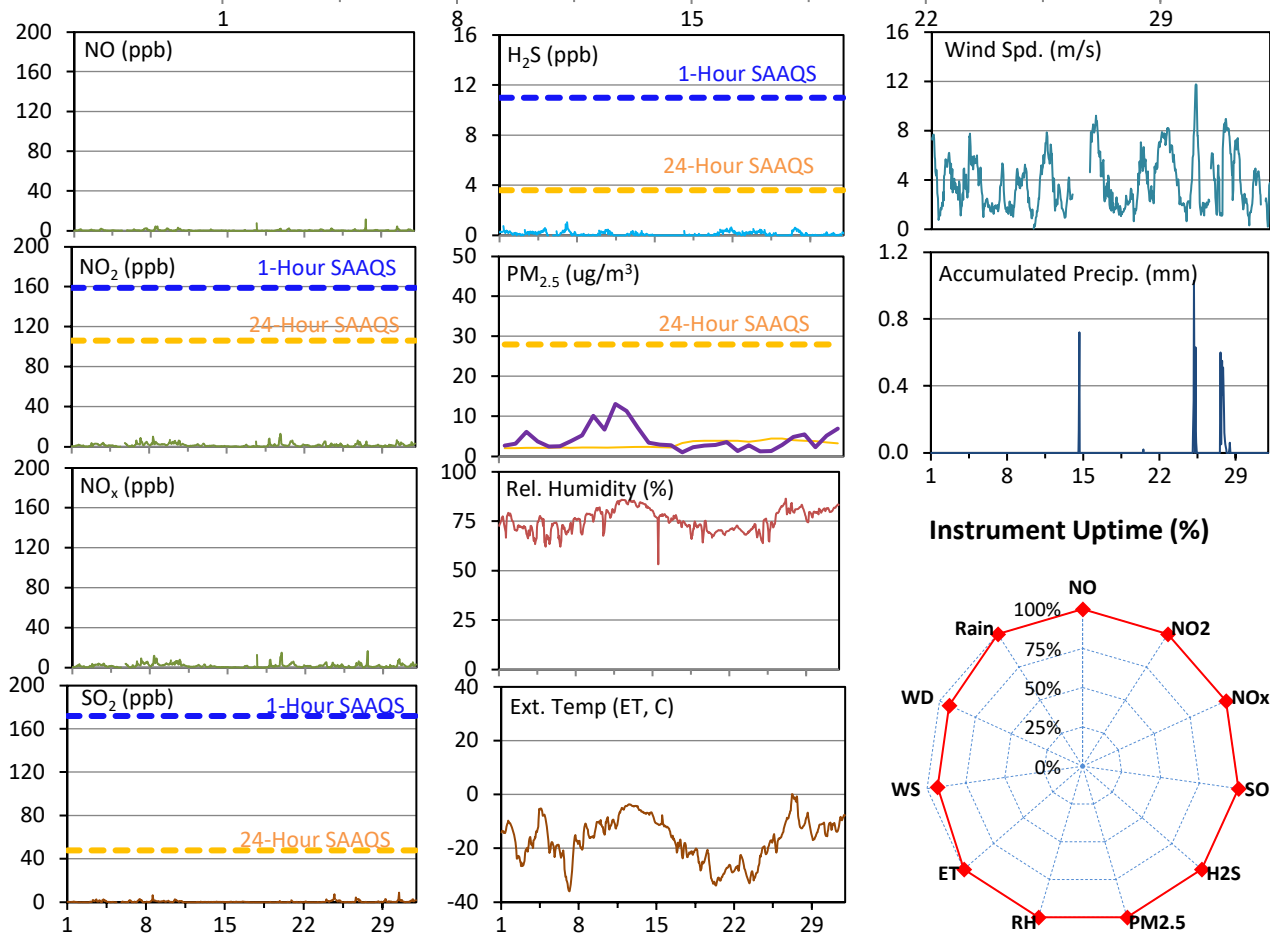
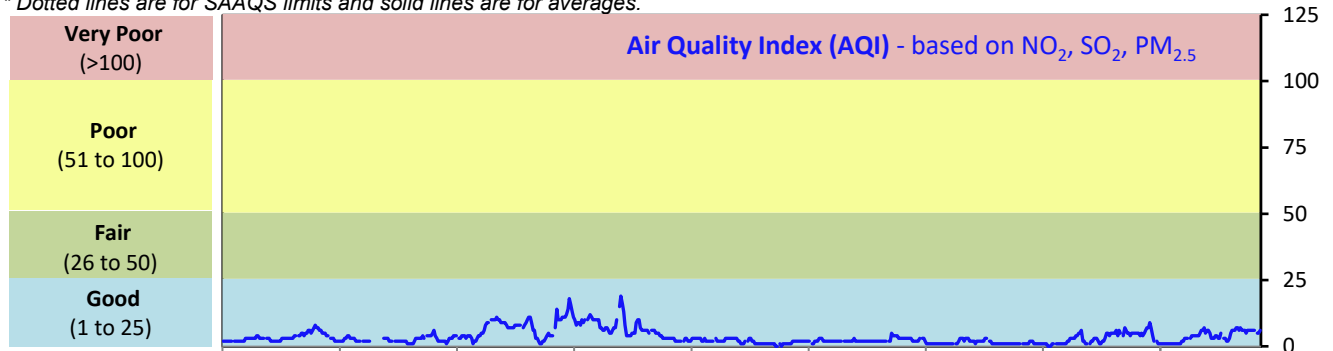
SESAA Stoughton Station - December 2022 Summary Report

Pollutants		Month Records		24-Hour Records				1-Hour Records			
Name	Conc. Unit	Avg. Conc.	Uptime	Maximum		SAAQS Standard	Exceed Days	Maximum		SAAQS Standard	Exceed Hours
				Conc.	Time			Conc.	Time		
NO	ppb	0.3	100.0%	1.2	Dec-8	-	-	11.4	Dec-27 14:00	-	-
NO ₂	ppb	1.5	100.0%	3.6	Dec-10	106	0	13.1	Dec-19 20:00	159	0
NO _x	ppb	1.9	100.0%	4.7	Dec-8	-	-	16.7	Dec-27 14:00	-	-
SO ₂	ppb	0.5	100.0%	1.8	Dec-24	48	0	8.8	Dec-30 11:00	172	0
H ₂ S	ppb	0.1	100.0%	0.4	Dec-21	3.6	0	1.1	Dec-07 02:00	11	0
PM _{2.5}	ug/m ³	4	100.0%	13	Dec-11	28	0	23	Dec-12 21:00	-	-

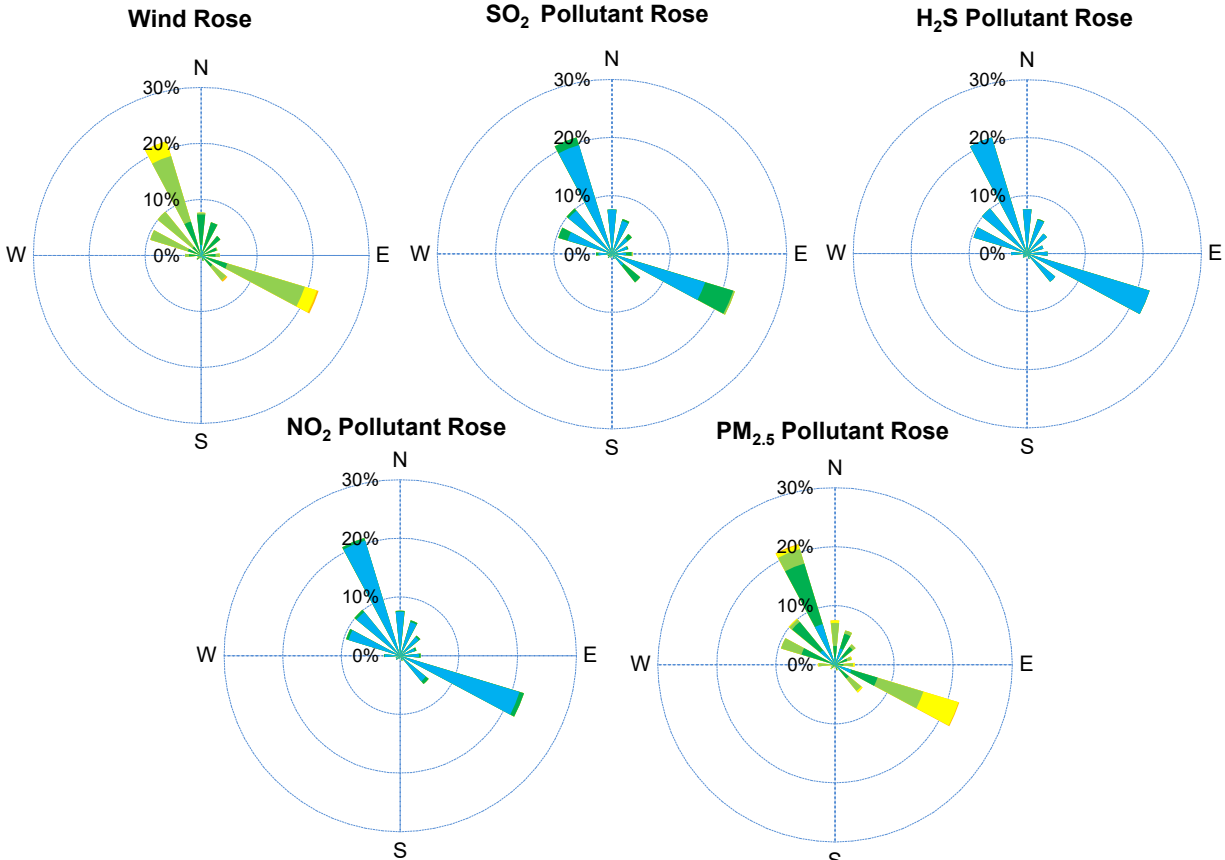
SAAQS: Saskatchewan Ambient Air Quality Standards

* Air Quality Standard refers to Saskatchewan Ambient Air Quality Standards (SAAQS).

* Dotted lines are for SAAQS limits and solid lines are for averages.



SESAA Stoughton Station - December 2022 Summary Report



Parameters	Unit	Color Code for Wind Spd & Pollutant Conc. Class						
Wind Speed	m/s	0.3 ≤ WS < 1.4	1.4 ≤ WS < 3.1	3.1 ≤ WS < 7.8	7.8 ≤ WS < 10.8	10.8 ≤ WS < 13.6	WS ≥ 13.6	
SO ₂	ppb	0 ≤ C < 1	1 ≤ C < 5	5 ≤ C < 10	10 ≤ C < 57	57 ≤ C < 172	C ≥ 172	
NO ₂	ppb	0 ≤ C < 5	5 ≤ C < 15	15 ≤ C < 30	30 ≤ C < 100	100 ≤ C < 212	C ≥ 212	
H ₂ S	ppb	0 ≤ C < 1	1 ≤ C < 3.6	3.6 ≤ C < 5	5 ≤ C < 8	8 ≤ C < 10.8	C ≥ 10.8	
PM _{2.5}	ug/m ³	0 ≤ C < 2	2 ≤ C < 4	4 ≤ C < 10	10 ≤ C < 20	20 ≤ C < 30	C ≥ 30	

Monthly Update

- *All data has been slope, intercept, and baseline corrected. Data may change after validation process.
- *All compliance parameters were within the Saskatchewan Ambient Air Quality Standards.
- *All compliance parameters had greater than 90% operational uptime.
- * 50 hours of data was flagged as "analyzer failure" for WS/WD due to issues with flatlining.
- *Routine quarterly calibrations were completed on Dec 5.

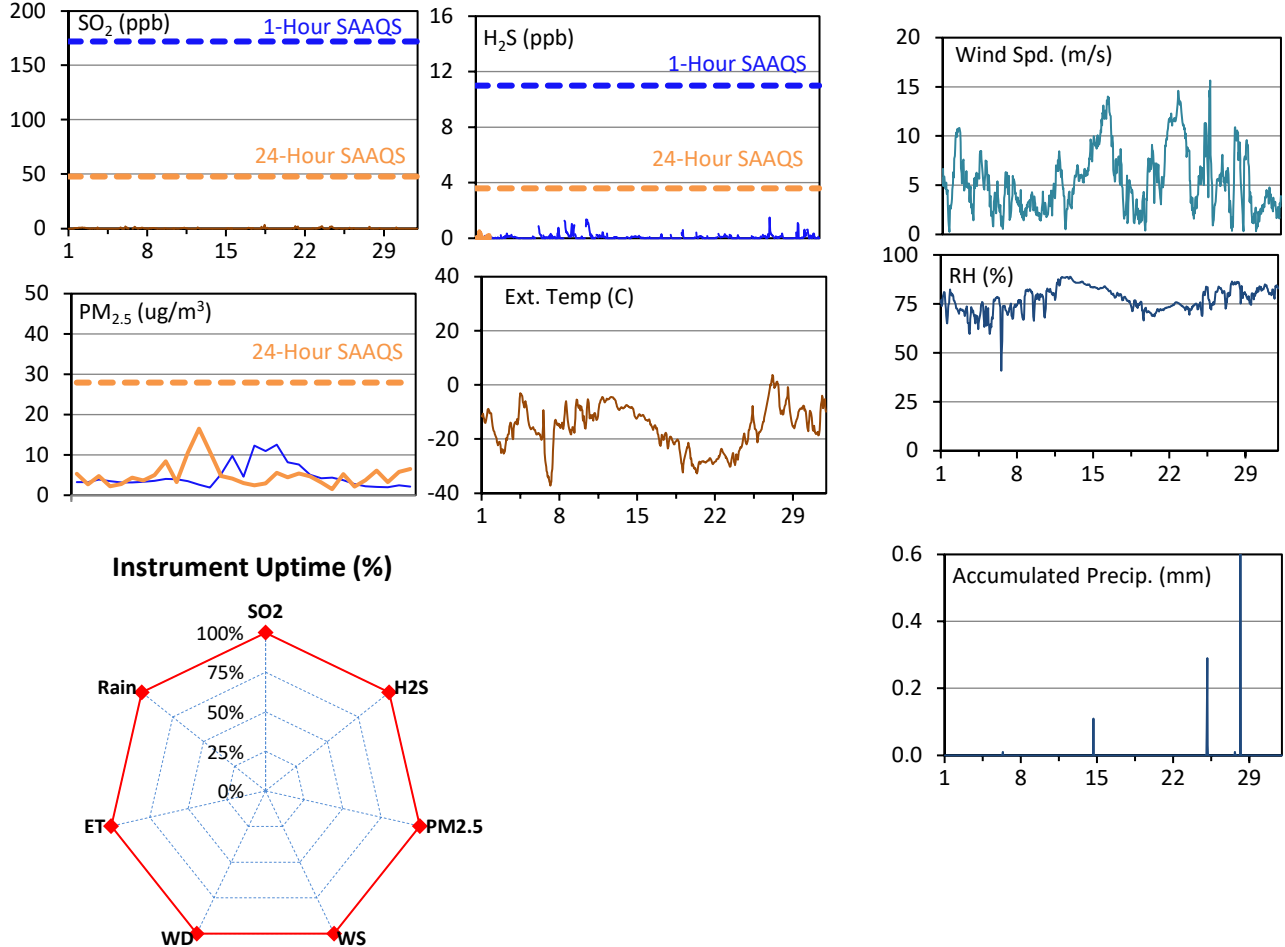
SESAA Torquay Station - December 2022 Summary Report

Pollutants		Month Records		24-Hour Records				1-Hour Records			
Name	Conc. Unit	Avg. Conc.	Uptime	Maximum		SAAQS Standard	Exceed Days	Maximum		SAAQS Standard	Exceed Hours
				Conc.	Time			Conc.	Time		
SO ₂	ppb	0.1	100.0%	0.3	Dec-2	48	0	3.4	Dec-18 10:00	172	0
H ₂ S	ppb	0.1	100.0%	0.5	Dec-9	3.6	0	1.5	Dec-27 12:00	11	0
PM _{2.5}	ug/m3	5	100.0%	17	Dec-12	28	0	27	Dec-12 23:00	-	-

SAAQS: Saskatchewan Ambient Air Quality Standards

* Air Quality Standard refers to Saskatchewan Ambient Air Quality Standards (SAAQS).

* Dotted lines are for SAAQS limits and solid lines are for averages.



Monthly Update

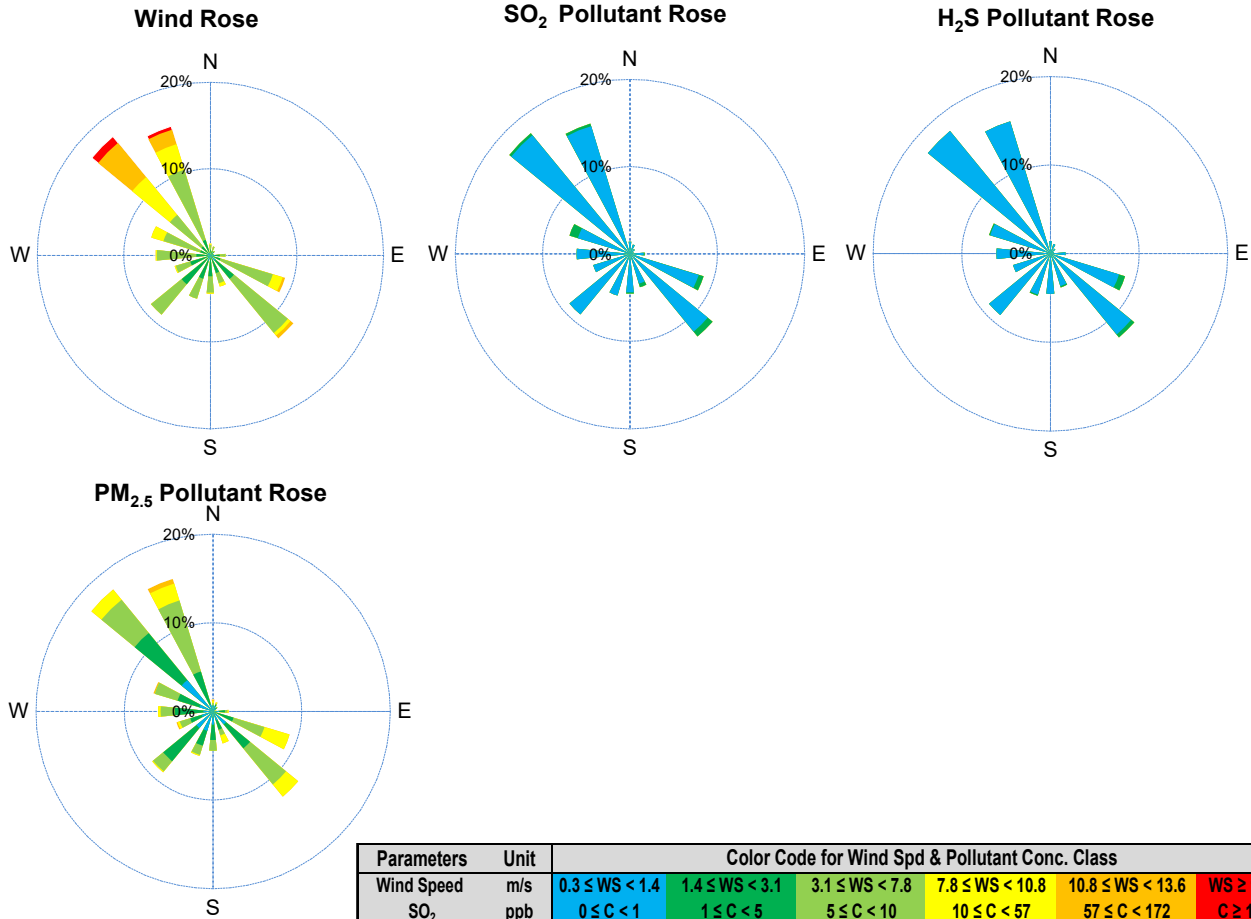
*All data has been slope, intercept, and baseline corrected. Data may change after validation process.

*All compliance parameters were within the Saskatchewan Ambient Air Quality Standards.

*All compliance parameters had greater than 90% operational uptime.

*Routine quarterly calibrations were completed on Dec 6.

SESAA Torquay Station - December 2022 Summary Report



Parameters	Unit	Color Code for Wind Spd & Pollutant Conc. Class					
Wind Speed	m/s	$0.3 \leq WS < 1.4$	$1.4 \leq WS < 3.1$	$3.1 \leq WS < 7.8$	$7.8 \leq WS < 10.8$	$10.8 \leq WS < 13.6$	$WS \geq 13.6$
SO ₂	ppb	$0 \leq C < 1$	$1 \leq C < 5$	$5 \leq C < 10$	$10 \leq C < 57$	$57 \leq C < 172$	$C \geq 172$
NO ₂	ppb	$0 \leq C < 5$	$5 \leq C < 15$	$15 \leq C < 30$	$30 \leq C < 100$	$100 \leq C < 212$	$C \geq 212$
O ₃	ppb	$0 \leq C < 10$	$10 \leq C < 20$	$20 \leq C < 40$	$40 \leq C < 60$	$60 \leq C < 82$	$C \geq 82$
H ₂ S	ppb	$0 \leq C < 1$	$1 \leq C < 3.6$	$3.6 \leq C < 5$	$5 \leq C < 8$	$8 \leq C < 10.8$	$C \geq 10.8$
PM _{2.5}	ug/m ³	$0 \leq C < 2$	$2 \leq C < 4$	$4 \leq C < 10$	$10 \leq C < 20$	$20 \leq C < 30$	$C \geq 30$

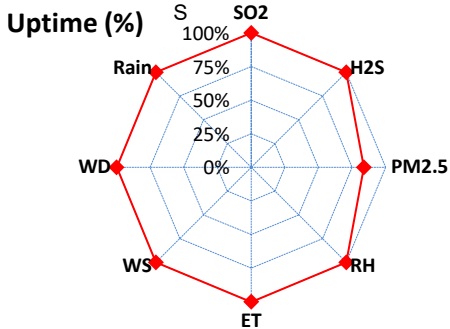
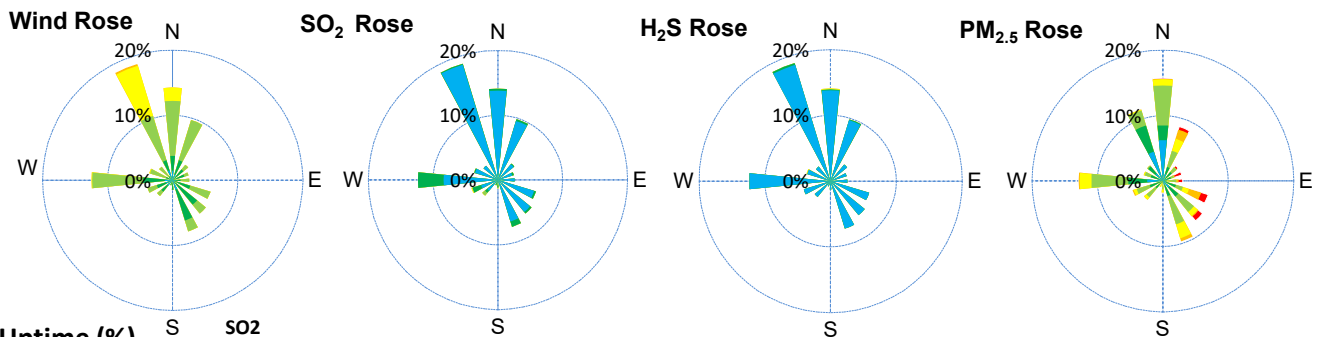
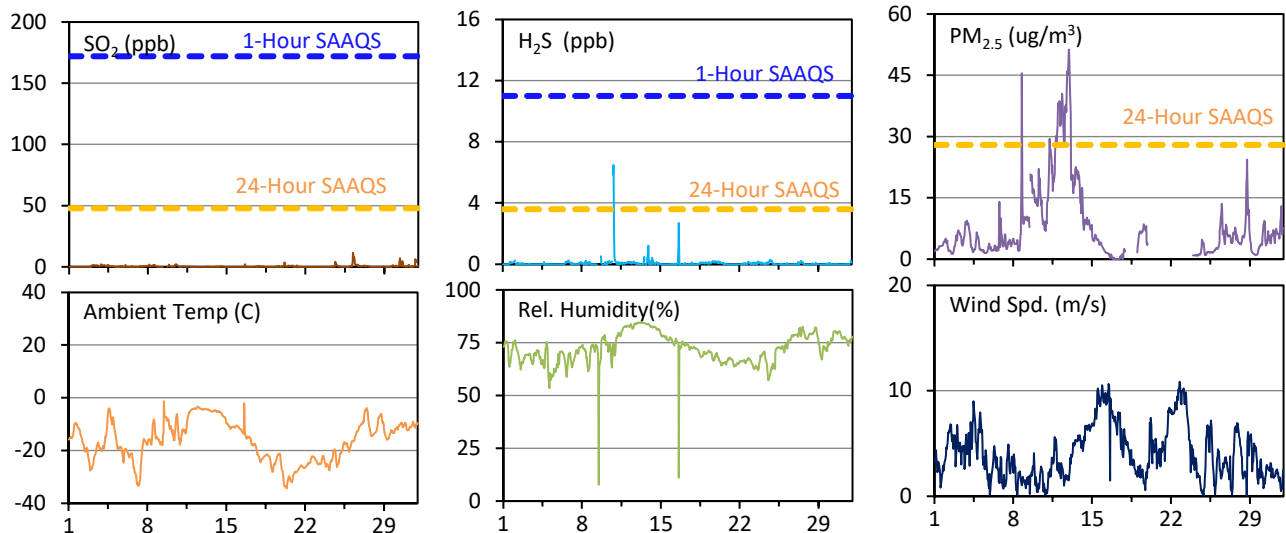
SESAA Wauchope Station - December 2022 Summary Report

Pollutants		Month Records		24-Hour Records				1-Hour Records			
Name	Conc. Unit	Avg. Conc.	Uptime	Maximum		SAAQS Objective	Exceed Days	Maximum		SAAQS Objective	Exceed Hours
				Conc.	Time			Conc.	Time		
SO ₂	ppb	0.4	100.0%	2.4	Dec-26	48	0	11.7	Dec-26 05:00	172	0
H ₂ S	ppb	0.1	100.0%	0.7	Dec-10	3.6	0	6.5	Dec-10 20:00	11	0
PM _{2.5}	ug/m ³	8	83.7%	38	Dec-12	28	1	51	Dec-12 22:00	-	-

SAAQS: Saskatchewan Ambient Air Quality Standards

* Air Quality Standard refers to Saskatchewan Ambient Air Quality Standards (SAAQS).

* Dotted lines are for SAAQS limits and solid lines are for averages.



Parameters	Unit	Color Code for Wind Spd & Pollutant Conc. Class					
Wind Speed	m/s	0.3 ≤ WS < 1.4	1.4 ≤ WS < 3.1	3.1 ≤ WS < 7.8	7.8 ≤ WS < 10.8	10.8 ≤ WS < 13.6	WS ≥ 13.6
SO ₂	ppb	0 ≤ C < 1	1 ≤ C < 5	5 ≤ C < 10	10 ≤ C < 57	57 ≤ C < 172	C ≥ 172
H ₂ S	ppb	0 ≤ C < 1	1 ≤ C < 3.6	3.6 ≤ C < 5	5 ≤ C < 8	8 ≤ C < 10.8	C ≥ 10.8
PM _{2.5}	ug/m ³	0 ≤ C < 2	2 ≤ C < 4	4 ≤ C < 10	10 ≤ C < 20	20 ≤ C < 30	C ≥ 30

Monthly Update

*All data has been slope, intercept, and baseline corrected. Data may change after validation process.
 *All compliance parameters were within the Saskatchewan Ambient Air Quality Standards with the exception of a 24-hour PM_{2.5} exceedance.
 *All compliance parameters were greater than 90% operational with the exception of PM_{2.5}.
 * 121 hours of data for PM_{2.5} was flagged as "analyzer failure". The analyzer flatlined and required a reset.

24-hour Exceedance Information			WS	WD	Rain	ET	SO ₂	H ₂ S	PM _{2.5}
PM _{2.5}	38.0	Dec-12	2.1	88	0.0	-4.1	-	0.1	38

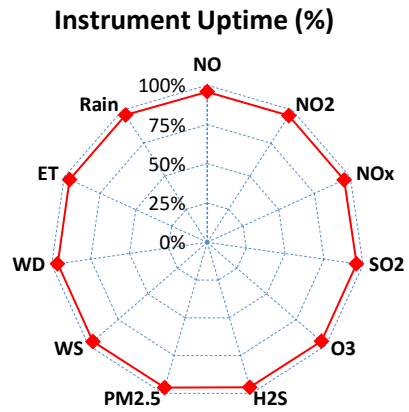
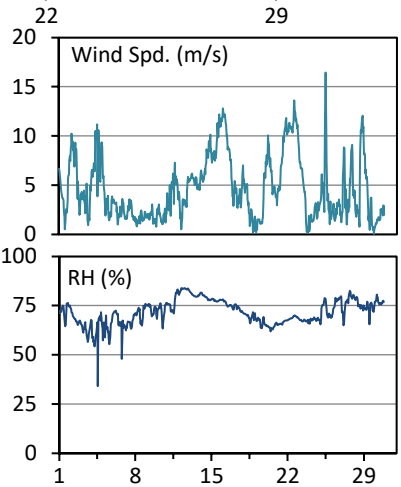
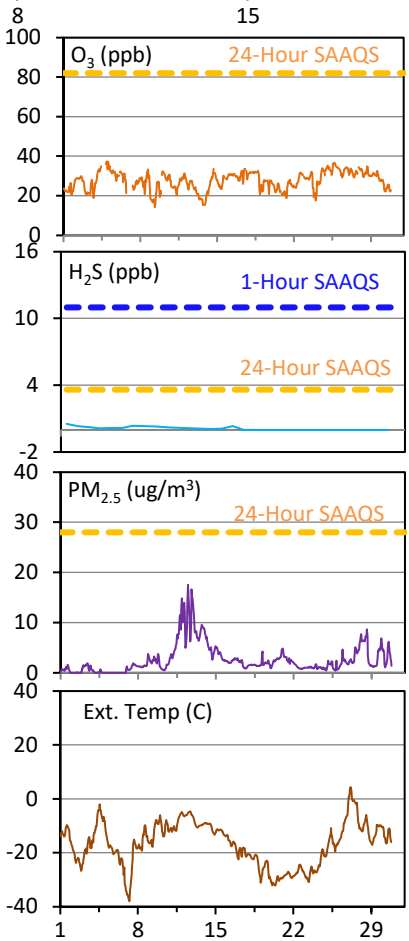
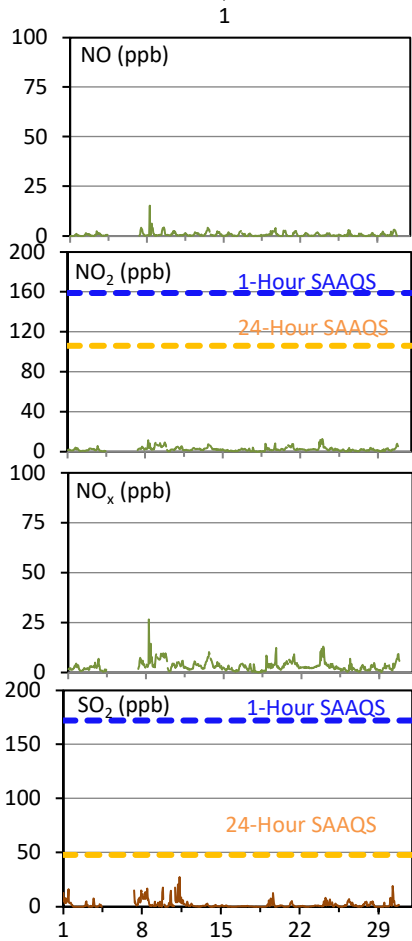
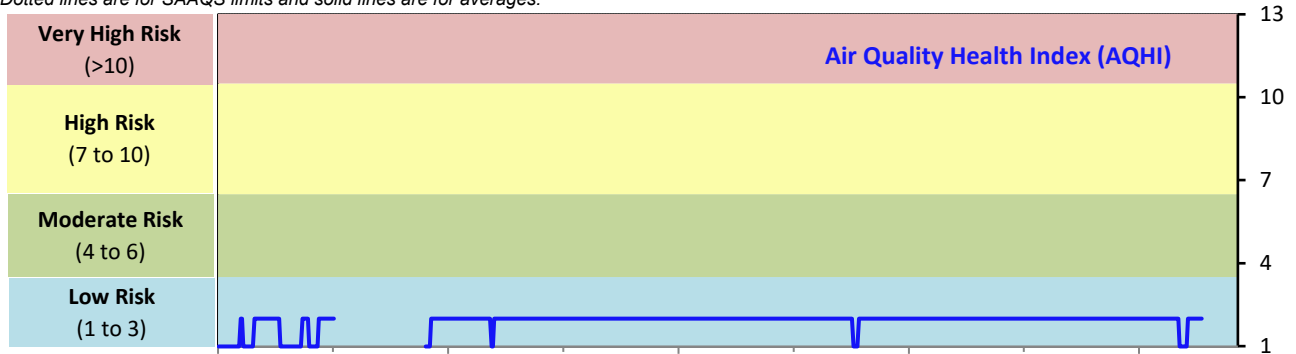
SESAA Weyburn Station - December 2022 Summary Report

Pollutants		Month Records		24-Hour Records				1-Hour Records			
Name	Conc. Unit	Avg. Conc.	Uptime	Maximum		SAAQS Standard	Exceed Days	Maximum		SAAQS Standard	Exceed Hours
				Conc.	Time			Conc.	Time		
NO	ppb	0.7	95.8%	1.9	Dec-8	-	-	15.4	Dec-08 06:00	-	-
NO ₂	ppb	2.4	95.8%	6.2	Dec-9	106	0	12.8	Dec-23 23:00	159	0
NO _x	ppb	3.1	95.8%	7.5	Dec-9	-	-	26.6	Dec-08 06:00	-	-
SO ₂	ppb	1.8	95.8%	6.3	Dec-11	48	0	27.6	Dec-11 08:00	172	0
O ₃	ppb	28	96.1%	34	Dec-25	-	-	37	Dec-04 23:00	82	0
H ₂ S	ppb	0.4	96.1%	1.5	Dec-26	3.6	0	6.7	Dec-24 07:00	11	0
PM _{2.5}	ug/m3	3	96.2%	11	Dec-12	28	0	18	Dec-12 11:00	-	-

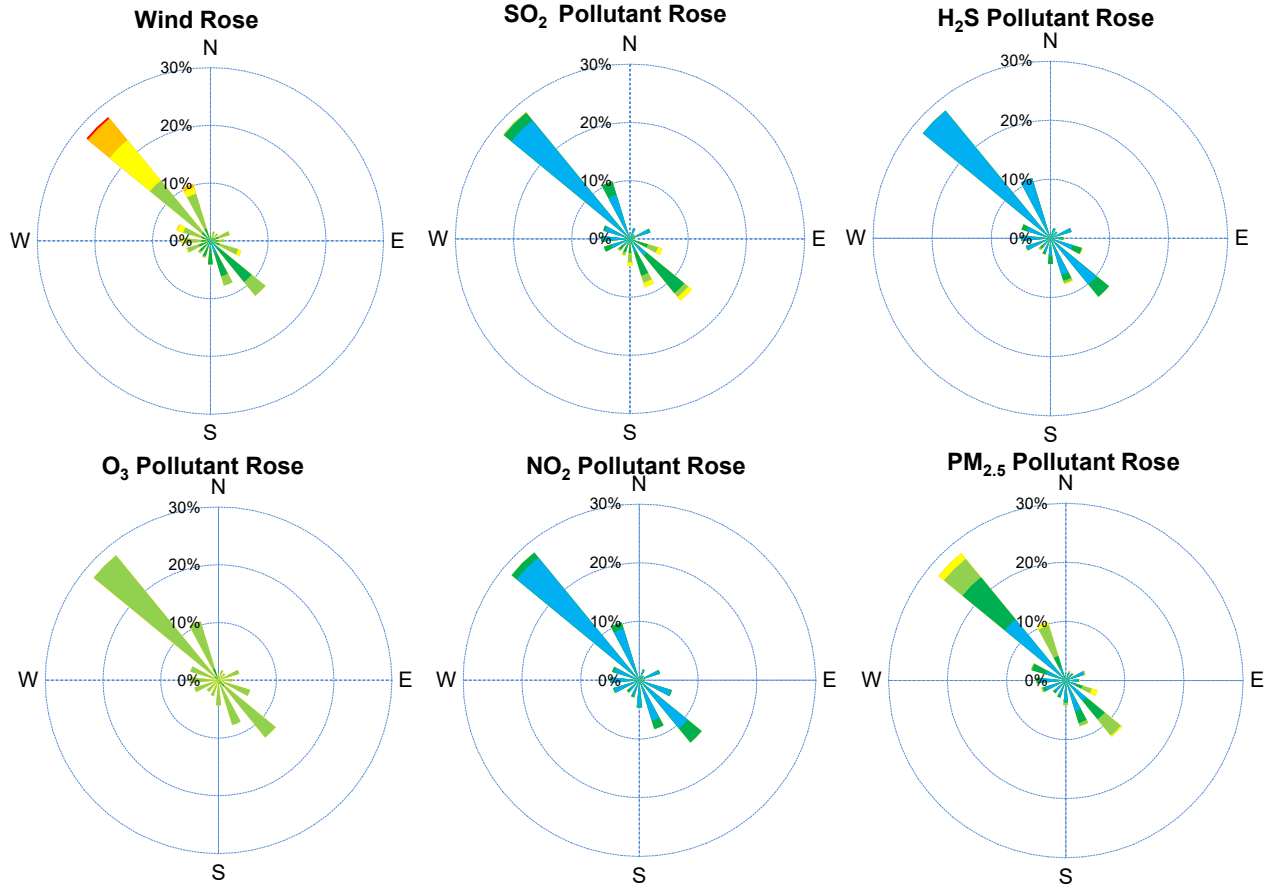
SAAQS: Saskatchewan Ambient Air Quality Standards

* Air Quality Standard refers to Saskatchewan Ambient Air Quality Standards (SAAQS).

* Dotted lines are for SAAQS limits and solid lines are for averages.



SESAA Weyburn Station - December 2022 Summary Report



Parameters	Unit	Color Code for Wind Spd & Pollutant Conc. Class					
		0.3 ≤ WS < 1.4	1.4 ≤ WS < 3.1	3.1 ≤ WS < 7.8	7.8 ≤ WS < 10.8	10.8 ≤ WS < 13.6	WS ≥ 13.6
SO ₂	ppb	0 ≤ C < 1	1 ≤ C < 5	5 ≤ C < 10	10 ≤ C < 57	57 ≤ C < 172	C ≥ 172
NO ₂	ppb	0 ≤ C < 5	5 ≤ C < 15	15 ≤ C < 30	30 ≤ C < 100	100 ≤ C < 212	C ≥ 212
O ₃	ppb	0 ≤ C < 10	10 ≤ C < 20	20 ≤ C < 40	40 ≤ C < 60	60 ≤ C < 82	C ≥ 82
H ₂ S	ppb	0 ≤ C < 1	1 ≤ C < 3.6	3.6 ≤ C < 5	5 ≤ C < 8	8 ≤ C < 10.8	C ≥ 10.8
PM _{2.5}	ug/m ³	0 ≤ C < 2	2 ≤ C < 4	4 ≤ C < 10	10 ≤ C < 20	20 ≤ C < 30	C ≥ 30

Monthly Update

*All data has been slope, intercept, and baseline corrected. Data may change after validation process.

*All compliance parameters were within the Saskatchewan Ambient Air Quality Standards.

*All compliance parameters were greater than 90% operational.

*Around 27 hours of data for all parameters is flagged as "power failure" due to power issues on site.

*Routine quarterly calibrations were completed on Dec 4 for Ozone and H2S and Dec 6 for NO, NO2, NOX and SO2.

Data for NO, NO2, NOX and SO2 between the Dec 4 and Dec 6 calcs was flagged as maintenance.