

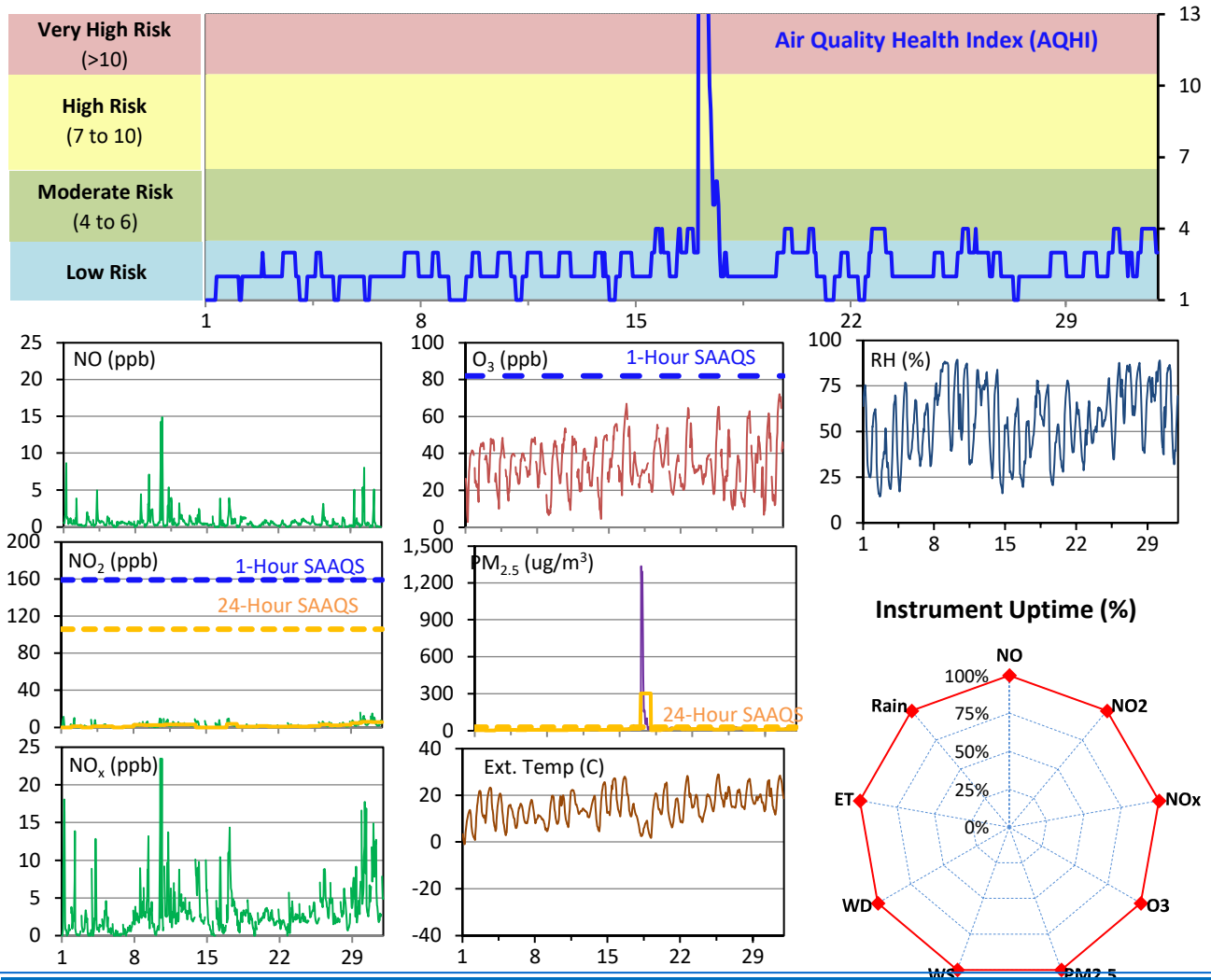
# SESAA Esterhazy Station - May 2023 Summary Report

Pollutants		Month Records		24-Hour Records				1-Hour Records			
Name	Conc. Unit	Avg. Conc.	Uptime	Maximum		SAAQS Standard	Exceed Days	Maximum		SAAQS Standard	Exceed Hours
				Conc.	Time			Conc.	Time		
NO	ppb	0.7	100.0%	2.4	May-10	-	-	14.9	May-10 15:00	-	-
NO <sub>2</sub>	ppb	2.1	100.0%	6.2	May-30	106	0	16.1	May-29 21:00	159	0
NO <sub>x</sub>	ppb	3.1	100.0%	7.3	May-30	-	-	23.5	May-10 12:00	-	-
O <sub>3</sub>	ppb	34	100.0%	45	May-16	-	-	72	May-31 15:00	82	0
PM <sub>2.5</sub>	ug/m3	18	100.0%	302	May-17	28	1	1337	May-17 01:00	-	-

SAAQS: Saskatchewan Ambient Air Quality Standards

\* Air Quality Standard refers to Saskatchewan Ambient Air Quality Standards (SAAQS).

\* Dotted lines are for SAAQS limits and solid lines are for averages.



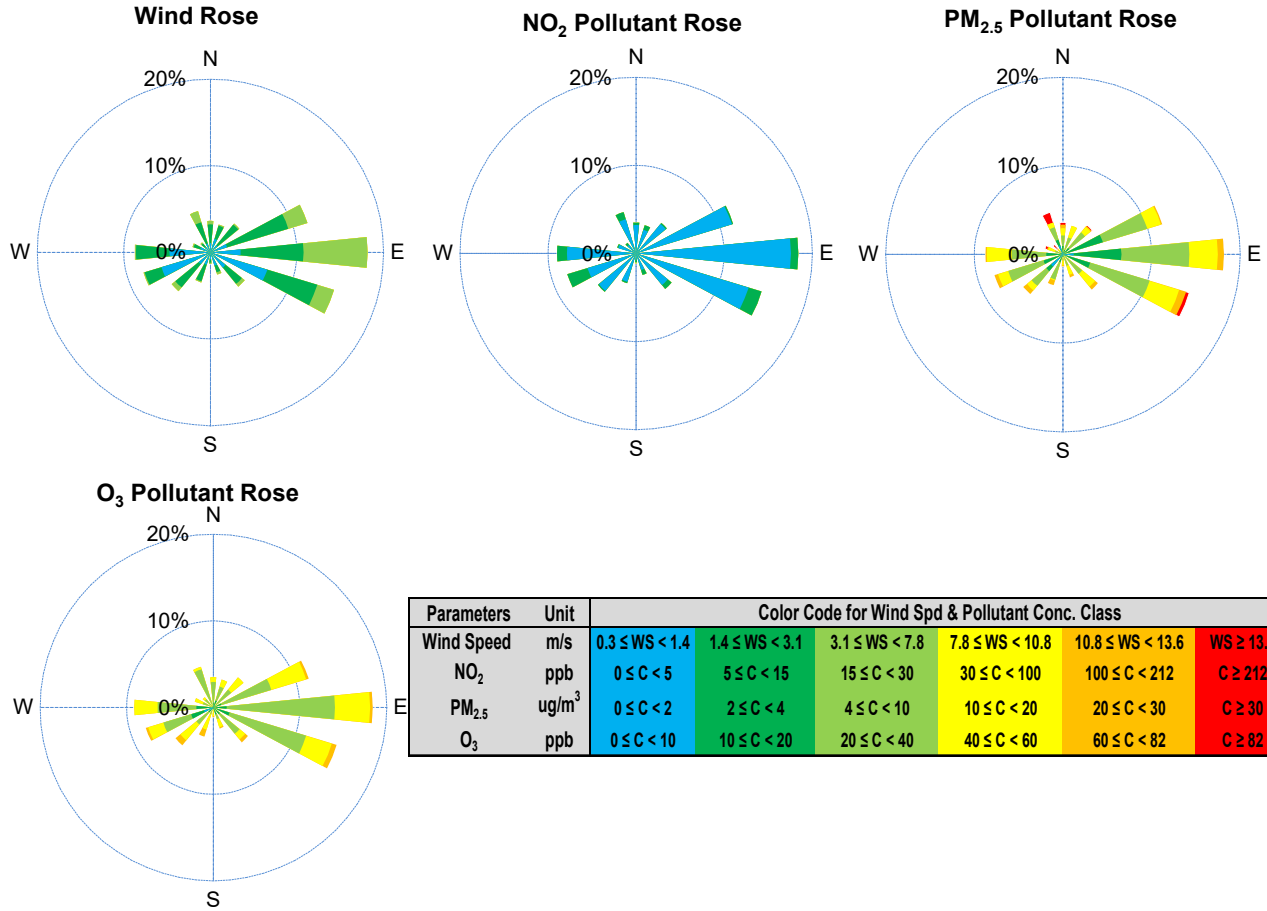
## Monthly Update

\*All data has been slope, intercept, and baseline corrected. Data may change after validation process.

\*All compliance parameters were within the Saskatchewan Ambient Air Quality Standards with the exception of one 24-hour PM<sub>2.5</sub> exceedance associated with wildfire smoke in the area.

\*All compliance parameters were above 90% operational.

# SESAA Esterhazy Station - May 2023 Summary Report



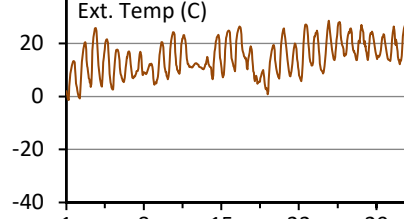
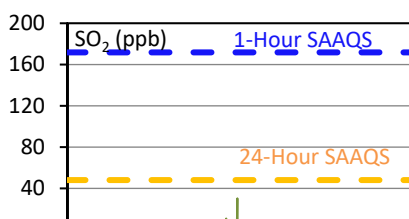
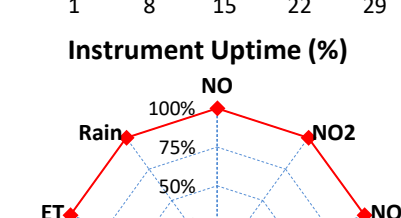
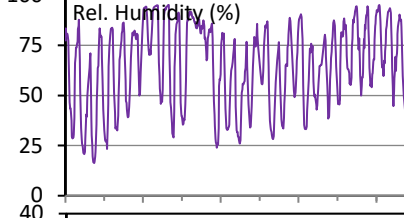
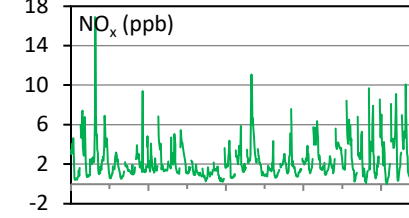
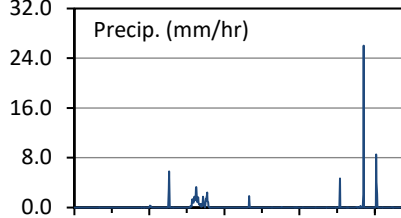
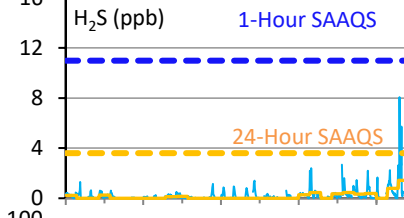
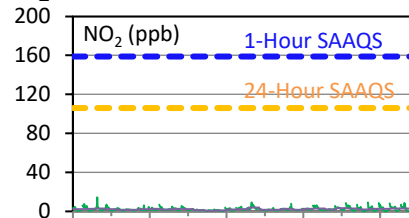
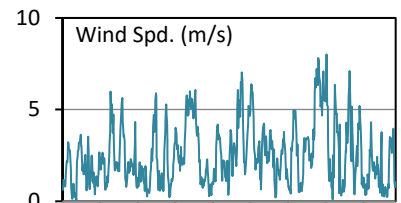
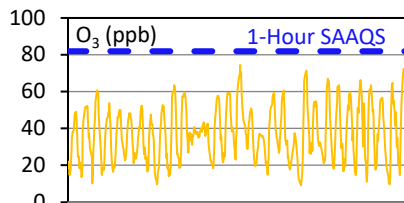
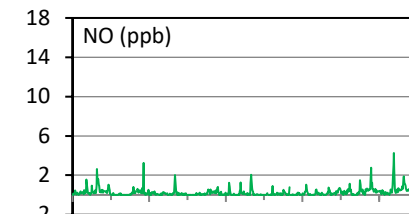
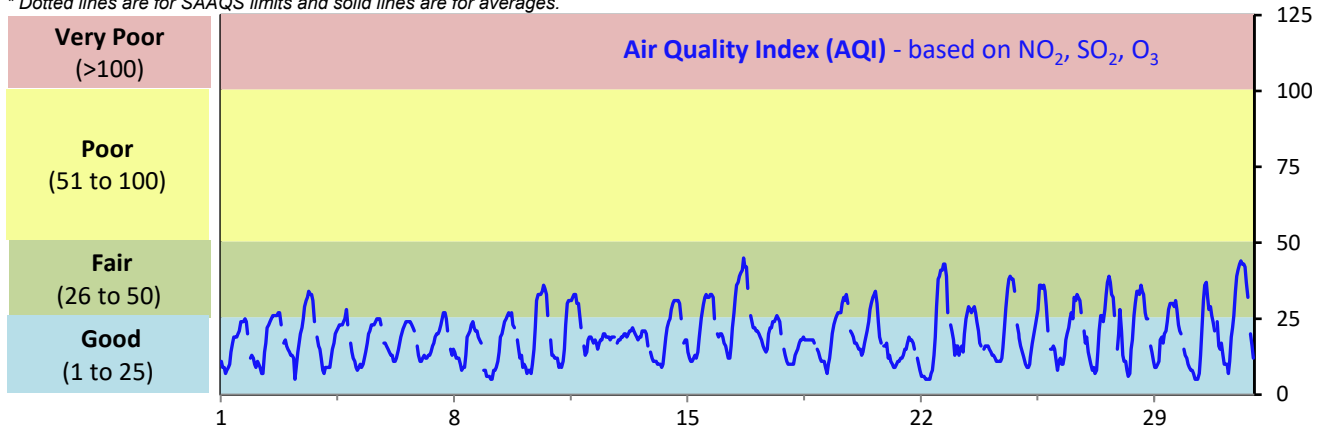
# SESAA Glen Ewen Station - May 2023 Summary Report

Pollutants		Month Records		24-Hour Records				1-Hour Records			
Name	Conc. Unit	Avg. Conc.	Uptime	Maximum		SAAQS Standard	Exceed Days	Maximum		SAAQS Standard	Exceed Hours
				Conc.	Time			Conc.	Time		
NO	ppb	0.3	100.0%	0.9	May-30	-	-	4.3	May-30 08:00	-	-
NO <sub>2</sub>	ppb	2.1	100.0%	3.9	May-17	106	0	14.3	May-03 05:00	159	0
NO <sub>x</sub>	ppb	2.3	100.0%	4.2	May-17	-	-	16.9	May-03 05:00	-	-
SO <sub>2</sub>	ppb	0.2	100.0%	2.0	May-16	48	0	30.3	May-16 08:00	172	0
O <sub>3</sub>	ppb	38	100.0%	50	May-16	-	-	75	May-16 16:00	82	0
H <sub>2</sub> S	ppb	0.2	100.0%	1.4	May-31	3.6	0	8.1	May-31 02:00	11	0

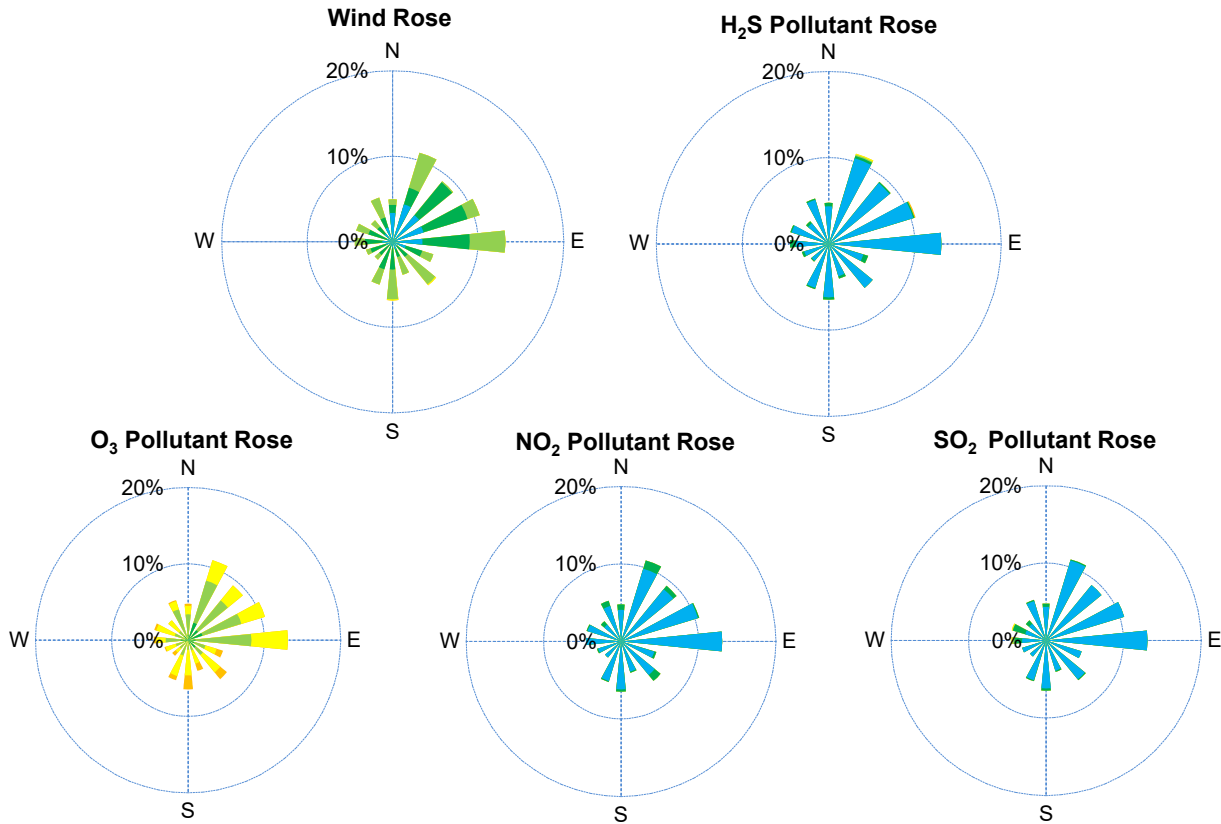
SAAQS: Saskatchewan Ambient Air Quality Standards

\* Air Quality Standard refers to Saskatchewan Ambient Air Quality Standards (SAAQS).

\* Dotted lines are for SAAQS limits and solid lines are for averages.



# SESAA Glen Ewen Station - May 2023 Summary Report



Parameters	Unit	Color Code for Wind Spd & Pollutant Conc. Class						
Wind Speed	m/s	0.3 ≤ WS < 1.4	1.4 ≤ WS < 3.1	3.1 ≤ WS < 7.8	7.8 ≤ WS < 10.8	10.8 ≤ WS < 13.6	WS ≥ 13.6	
SO <sub>2</sub>	ppb	0 ≤ C < 1	1 ≤ C < 5	5 ≤ C < 10	10 ≤ C < 57	57 ≤ C < 172	C ≥ 172	
NO <sub>2</sub>	ppb	0 ≤ C < 5	5 ≤ C < 15	15 ≤ C < 30	30 ≤ C < 100	100 ≤ C < 212	C ≥ 212	
O <sub>3</sub>	ppb	0 ≤ C < 10	10 ≤ C < 20	20 ≤ C < 40	40 ≤ C < 60	60 ≤ C < 82	C ≥ 82	
H <sub>2</sub> S	ppb	0 ≤ C < 1	1 ≤ C < 3.6	3.6 ≤ C < 5	5 ≤ C < 8	8 ≤ C < 10.8	C ≥ 10.8	

## Monthly Update

\*All data has been slope, intercept, and baseline corrected. Data may change after validation process.

\*All compliance parameters were within the Saskatchewan Ambient Air Quality Standards.

\*All compliance parameters were greater than 90% operational.

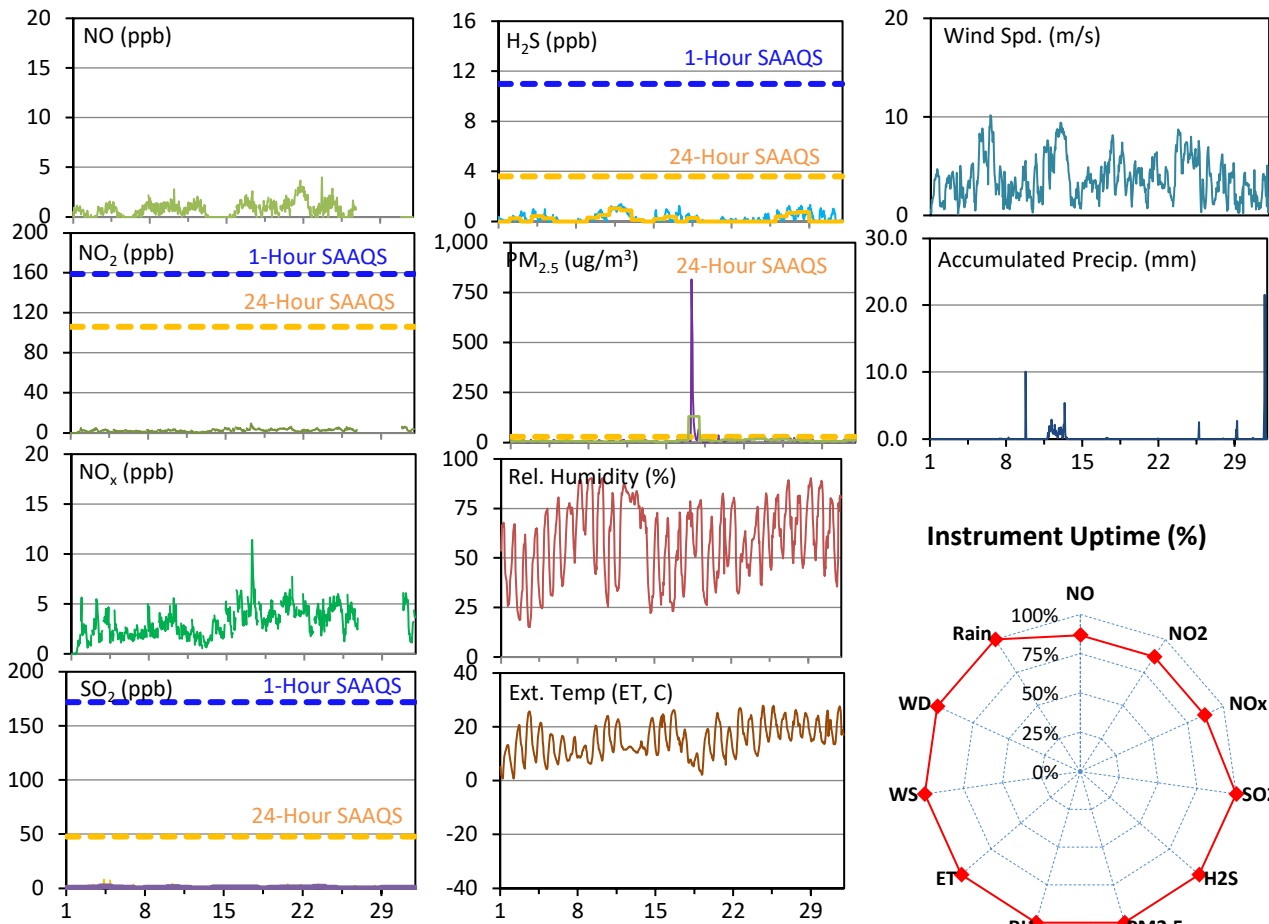
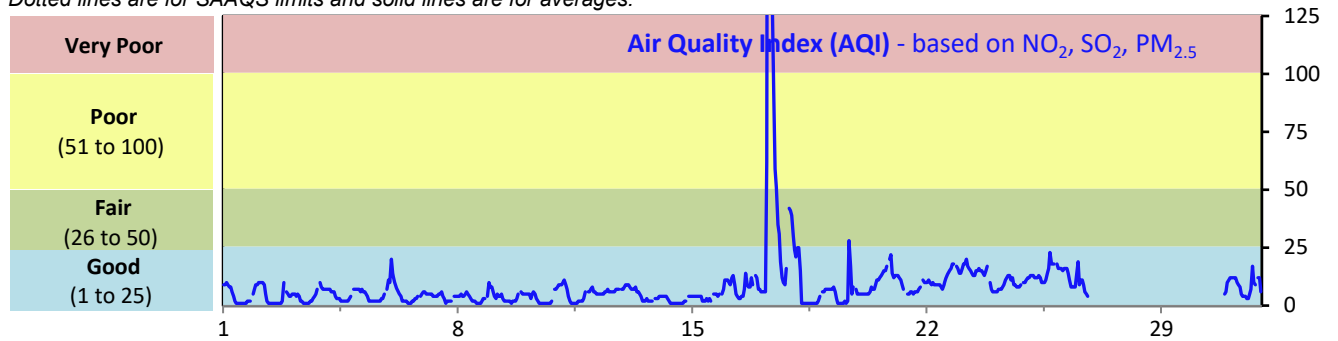
# SESAA Oxbow Station - May 2023 Summary Report

Pollutants		Month Records		24-Hour Records				1-Hour Records			
Name	Conc. Unit	Avg. Conc.	Uptime	Maximum		SAAQS Standard	Exceed Days	Maximum		SAAQS Standard	Exceed Hours
				Conc.	Time			Conc.	Time		
NO	ppb	0.7	86.8%	2.3	May-21	-	-	4.0	May-23 16:00	-	-
NO <sub>2</sub>	ppb	2.4	86.8%	4.4	May-17	106	0	9.4	May-17 07:00	159	0
NO <sub>x</sub>	ppb	3.1	86.8%	5.4	May-17	-	-	11.4	May-17 07:00	-	-
SO <sub>2</sub>	ppb	0.6	100.0%	1.8	May-4	48	0	8.1	May-04 08:00	172	0
H <sub>2</sub> S	ppb	0.3	99.9%	1.1	May-11	3.6	0	1.4	May-12 01:00	11	0
PM <sub>2.5</sub>	ug/m <sup>3</sup>	12	100.0%	131	May-17	28	1	815	May-17 06:00	-	-

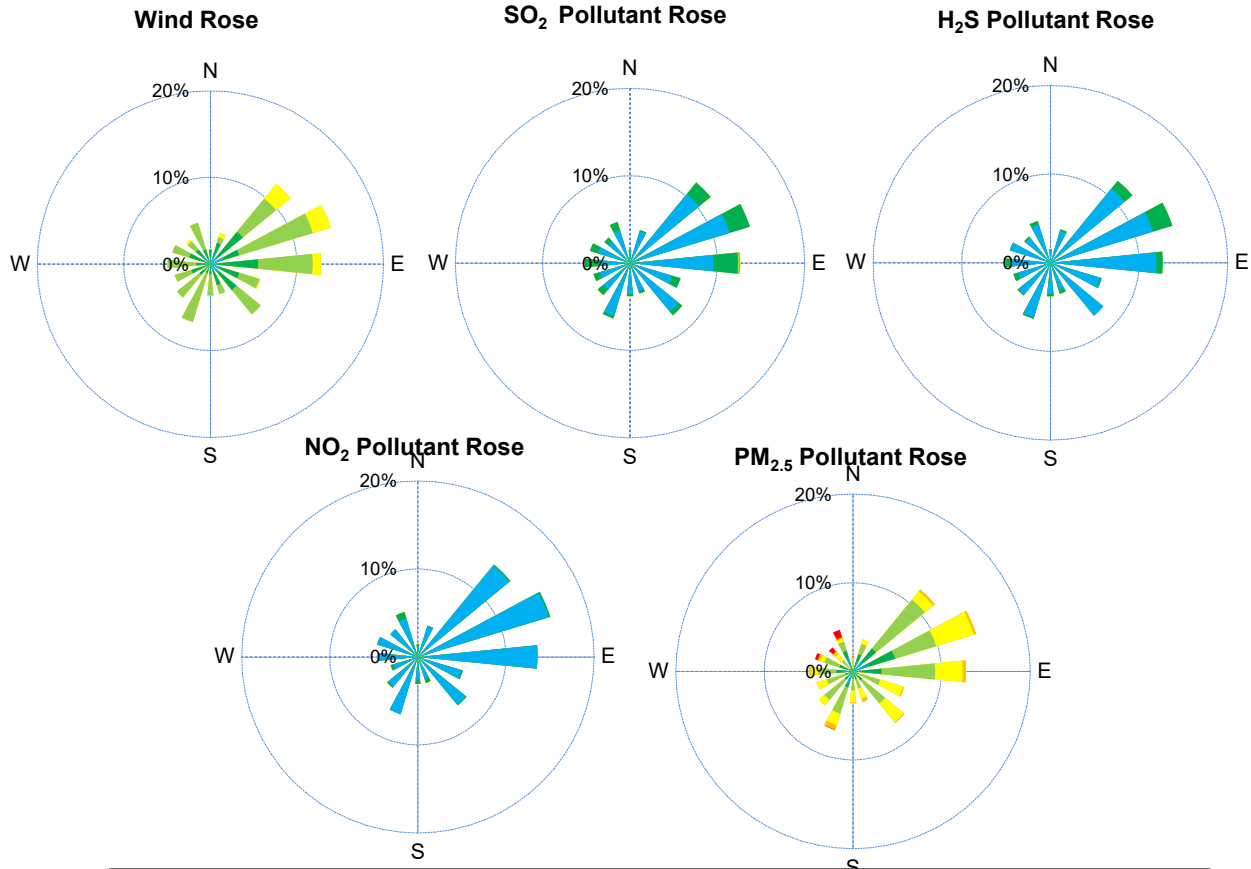
SAAQS: Saskatchewan Ambient Air Quality Standards

\* Air Quality Standard refers to Saskatchewan Ambient Air Quality Standards (SAAQS).

\* Dotted lines are for SAAQS limits and solid lines are for averages.



# SESAA Oxbow Station - May 2023 Summary Report



Parameters	Unit	Color Code for Wind Spd & Pollutant Conc. Class						
Wind Speed	m/s	0.3 ≤ WS < 1.4	1.4 ≤ WS < 3.1	3.1 ≤ WS < 7.8	7.8 ≤ WS < 10.8	10.8 ≤ WS < 13.6	WS ≥ 13.6	
SO <sub>2</sub>	ppb	0 ≤ C < 1	1 ≤ C < 5	5 ≤ C < 10	10 ≤ C < 57	57 ≤ C < 172	C ≥ 172	
NO <sub>2</sub>	ppb	0 ≤ C < 5	5 ≤ C < 15	15 ≤ C < 30	30 ≤ C < 100	100 ≤ C < 212	C ≥ 212	
H <sub>2</sub> S	ppb	0 ≤ C < 1	1 ≤ C < 3.6	3.6 ≤ C < 5	5 ≤ C < 8	8 ≤ C < 10.8	C ≥ 10.8	
PM <sub>2.5</sub>	ug/m <sup>3</sup>	0 ≤ C < 2	2 ≤ C < 4	4 ≤ C < 10	10 ≤ C < 20	20 ≤ C < 30	C ≥ 30	

## Monthly Update

\*All data has been slope, intercept, and baseline corrected. Data may change after validation process.

\*All compliance parameters were within the Saskatchewan Ambient Air Quality Standards with the exception of one 24-hour PM<sub>2.5</sub> exceedance attributed to wildfire smoke in the area.

\*All compliance parameters had greater than 90% operational uptime with the exception of NO, NO<sub>2</sub> and NO<sub>x</sub>.

\* 98 hours of data flagged as "analyzer failure" for NO/NO<sub>2</sub>/NO<sub>x</sub> due to analyzer malfunction.

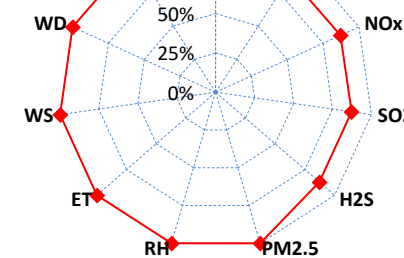
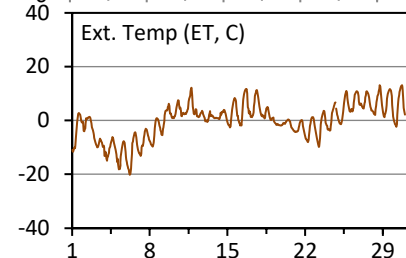
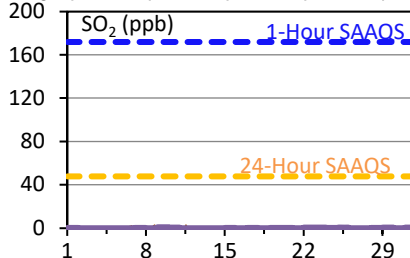
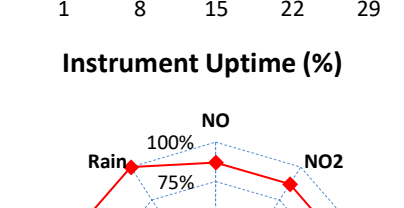
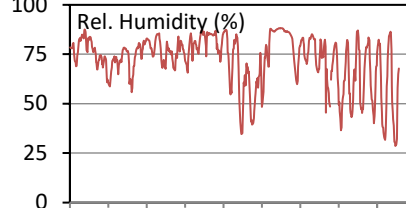
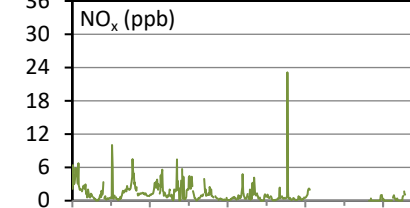
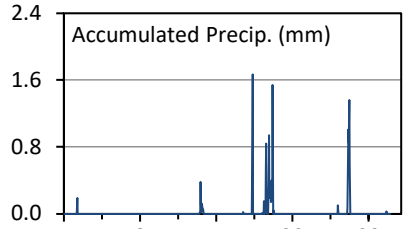
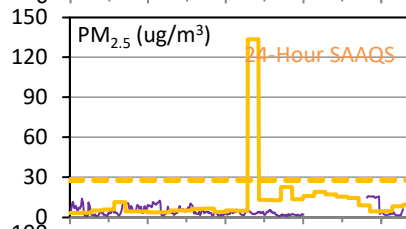
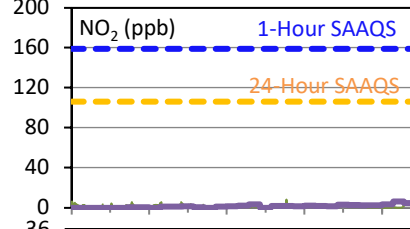
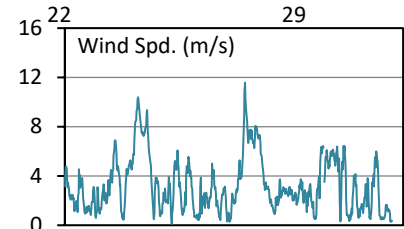
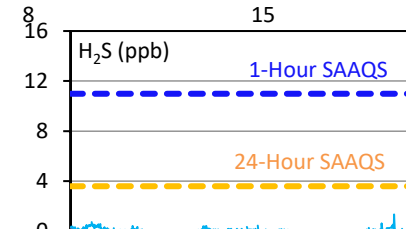
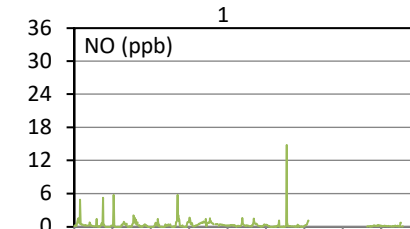
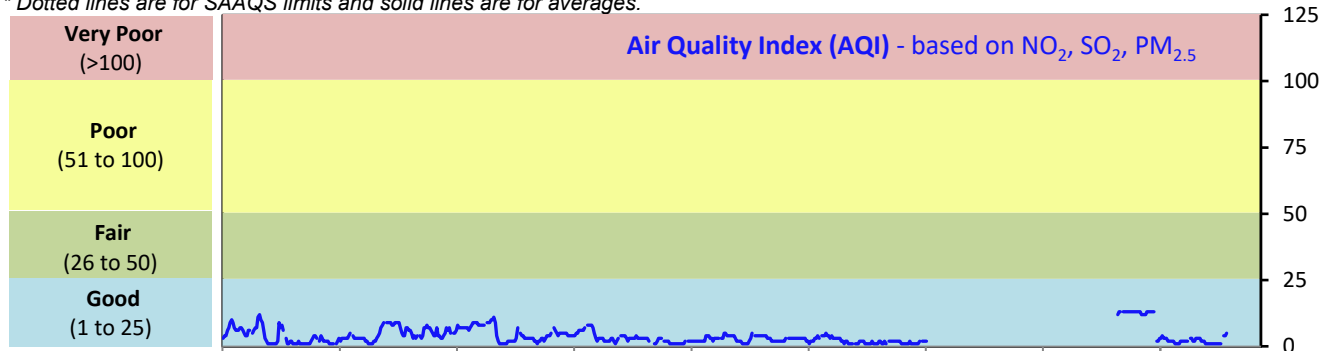
# SESAA Stoughton Station - May 2023 Summary Report

Pollutants		Month Records		24-Hour Records				1-Hour Records			
Name	Conc. Unit	Avg. Conc.	Uptime	Maximum		SAAQS Standard	Exceed Days	Maximum		SAAQS Standard	Exceed Hours
				Conc.	Time			Conc.	Time		
NO	ppb	0.3	87.1%	4.6	May-21	-	-	14.8	May-20 09:00	-	-
NO <sub>2</sub>	ppb	0.8	87.1%	6.2	May-30	106	0	8.3	May-20 09:00	159	0
NO <sub>x</sub>	ppb	1.1	87.1%	7.8	May-30	-	-	23.1	May-20 09:00	-	-
SO <sub>2</sub>	ppb	0.2	87.1%	0.7	May-22	48	0	2.6	May-08 18:00	172	0
H <sub>2</sub> S	ppb	0.1	87.1%	0.7	May-11	3.6	0	1.4	May-30 04:00	11	0
PM <sub>2.5</sub>	ug/m3	5	100.0%	134	May-17	28	1	16	May-27 21:00	-	-

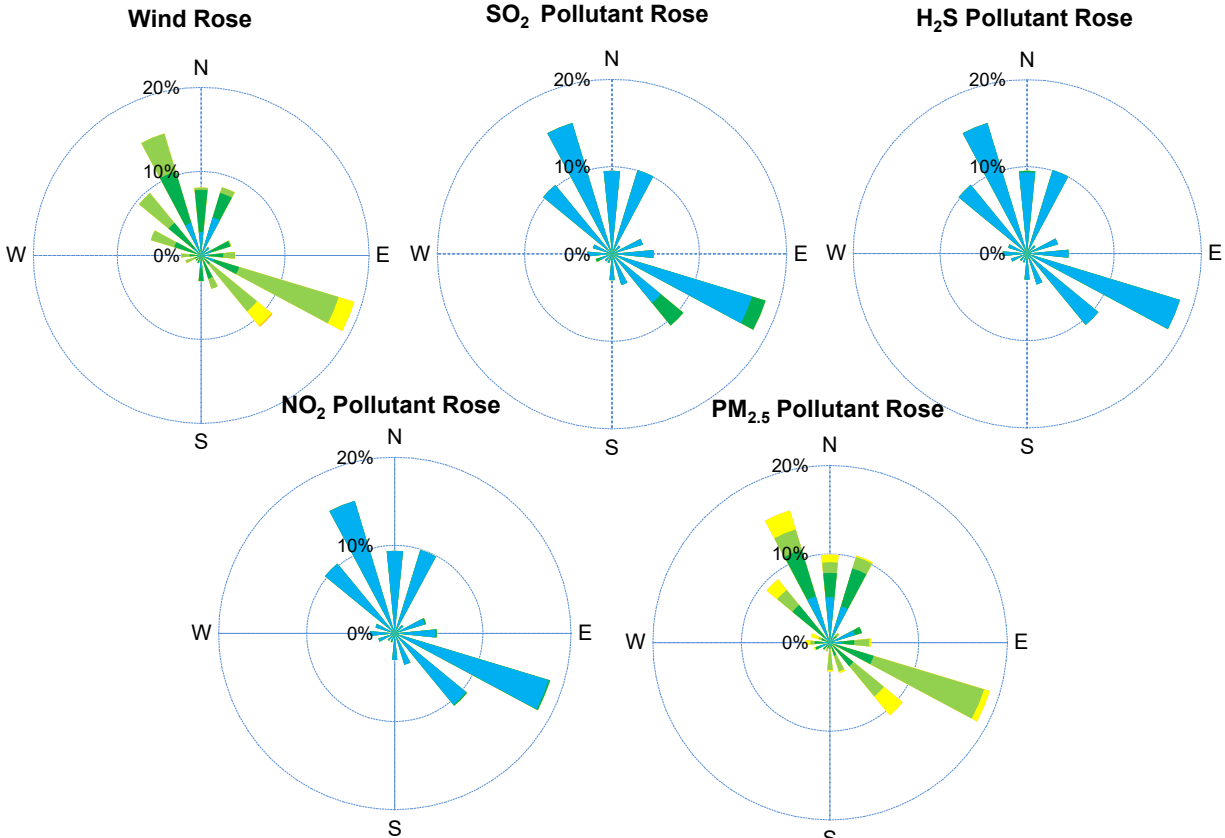
SAAQS: Saskatchewan Ambient Air Quality Standards

\* Air Quality Standard refers to Saskatchewan Ambient Air Quality Standards (SAAQS).

\* Dotted lines are for SAAQS limits and solid lines are for averages.



# SESAA Stoughton Station - May 2023 Summary Report



Parameters	Unit	Color Code for Wind Spd & Pollutant Conc. Class						
Wind Speed	m/s	0.3 ≤ WS < 1.4	1.4 ≤ WS < 3.1	3.1 ≤ WS < 7.8	7.8 ≤ WS < 10.8	10.8 ≤ WS < 13.6	WS ≥ 13.6	
SO <sub>2</sub>	ppb	0 ≤ C < 1	1 ≤ C < 5	5 ≤ C < 10	10 ≤ C < 57	57 ≤ C < 172	C ≥ 172	
NO <sub>2</sub>	ppb	0 ≤ C < 5	5 ≤ C < 15	15 ≤ C < 30	30 ≤ C < 100	100 ≤ C < 212	C ≥ 212	
H <sub>2</sub> S	ppb	0 ≤ C < 1	1 ≤ C < 3.6	3.6 ≤ C < 5	5 ≤ C < 8	8 ≤ C < 10.8	C ≥ 10.8	
PM <sub>2.5</sub>	ug/m <sup>3</sup>	0 ≤ C < 2	2 ≤ C < 4	4 ≤ C < 10	10 ≤ C < 20	20 ≤ C < 30	C ≥ 30	

## Monthly Update

\*All data has been slope, intercept, and baseline corrected. Data may change after validation process.

\*All compliance parameters were within the Saskatchewan Ambient Air Quality Standards with the exception of one 24-hour PM<sub>2.5</sub> exceedance associated with wildfire smoke in the area.

\*All compliance parameters were less than 90% operational with the exception of PM<sub>2.5</sub>

\*96 hours of data is flagged as "analyzer failure" for all parameters, intermittent analyzer issues occurred.



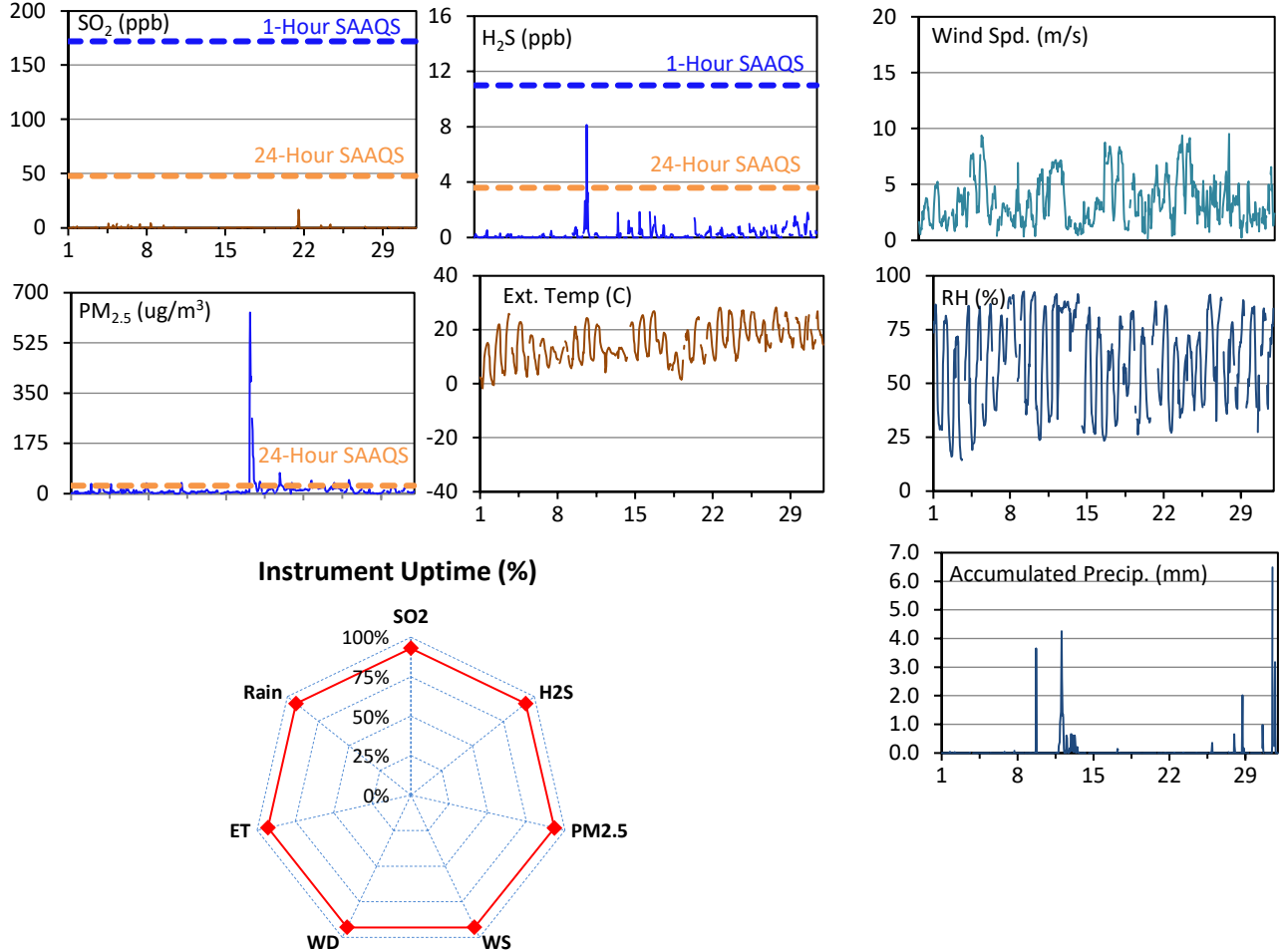
# SESAA Torquay Station - May 2023 Summary Report

Pollutants		Month Records		24-Hour Records				1-Hour Records			
Name	Conc. Unit	Avg. Conc.	Uptime	Maximum		SAAQS Standard	Exceed Days	Maximum		SAAQS Standard	Exceed Hours
				Conc.	Time			Conc.	Time		
SO <sub>2</sub>	ppb	0.2	93.0%	0.1	May-16	48	0	16.6	May-21 12:00	172	0
H <sub>2</sub> S	ppb	0.2	93.0%	0.6	Mar-23	3.6	0	8.1	May-11 04:00	11	0
PM <sub>2.5</sub>	ug/m3	14	93.3%	130	May-17	28	1	631	May-17 04:00	-	-

*SAAQS: Saskatchewan Ambient Air Quality Standards*

\* Air Quality Standard refers to Saskatchewan Ambient Air Quality Standards (SAAQS).

\* Dotted lines are for SAAQS limits and solid lines are for averages.



## Monthly Update

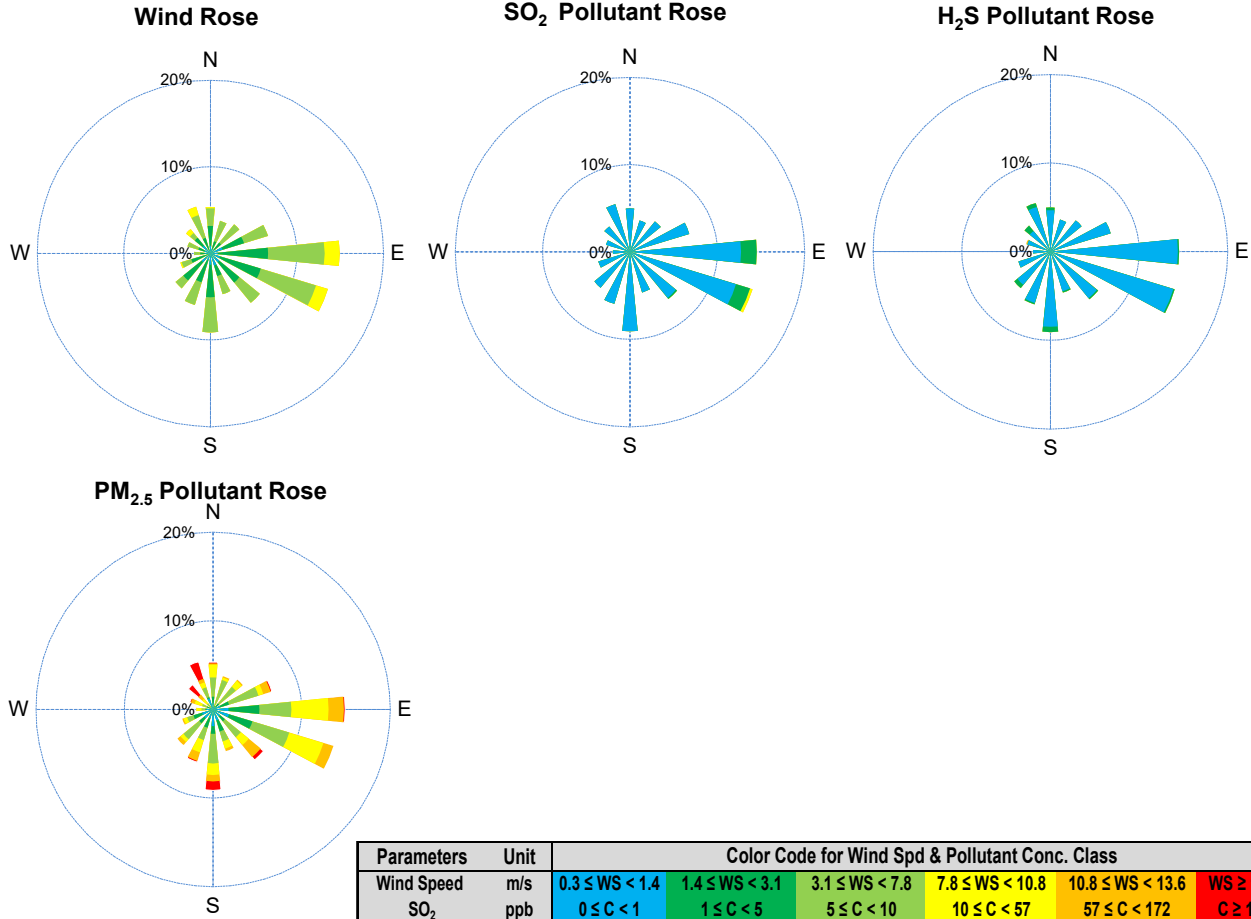
\*All data has been slope, intercept, and baseline corrected. Data may change after validation process.

\*All compliance parameters were within the Saskatchewan Ambient Air Quality Standards with the exception of one 24-hour PM<sub>2.5</sub> exceedance associated with wildfire smoke in the area.

\*All compliance parameters are above 90% operational.

\*53 hours of data for all parameters is flagged as "power failure" due to intermittent power interruptions

# SESAA Torquay Station - May 2023 Summary Report



Parameters	Unit	Color Code for Wind Spd & Pollutant Conc. Class					
Wind Speed	m/s	0.3 ≤ WS < 1.4	1.4 ≤ WS < 3.1	3.1 ≤ WS < 7.8	7.8 ≤ WS < 10.8	10.8 ≤ WS < 13.6	WS ≥ 13.6
SO <sub>2</sub>	ppb	0 ≤ C < 1	1 ≤ C < 5	5 ≤ C < 10	10 ≤ C < 57	57 ≤ C < 172	C ≥ 172
NO <sub>2</sub>	ppb	0 ≤ C < 5	5 ≤ C < 15	15 ≤ C < 30	30 ≤ C < 100	100 ≤ C < 212	C ≥ 212
O <sub>3</sub>	ppb	0 ≤ C < 10	10 ≤ C < 20	20 ≤ C < 40	40 ≤ C < 60	60 ≤ C < 82	C ≥ 82
H <sub>2</sub> S	ppb	0 ≤ C < 1	1 ≤ C < 3.6	3.6 ≤ C < 5	5 ≤ C < 8	8 ≤ C < 10.8	C ≥ 10.8
PM <sub>2.5</sub>	ug/m <sup>3</sup>	0 ≤ C < 2	2 ≤ C < 4	4 ≤ C < 10	10 ≤ C < 20	20 ≤ C < 30	C ≥ 30

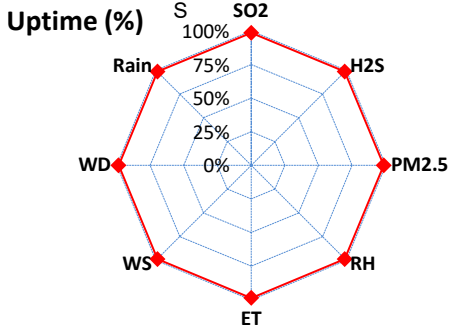
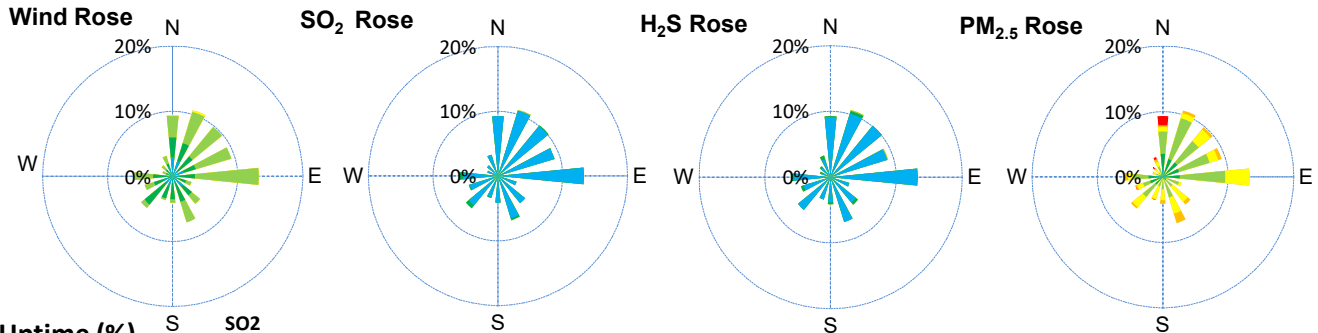
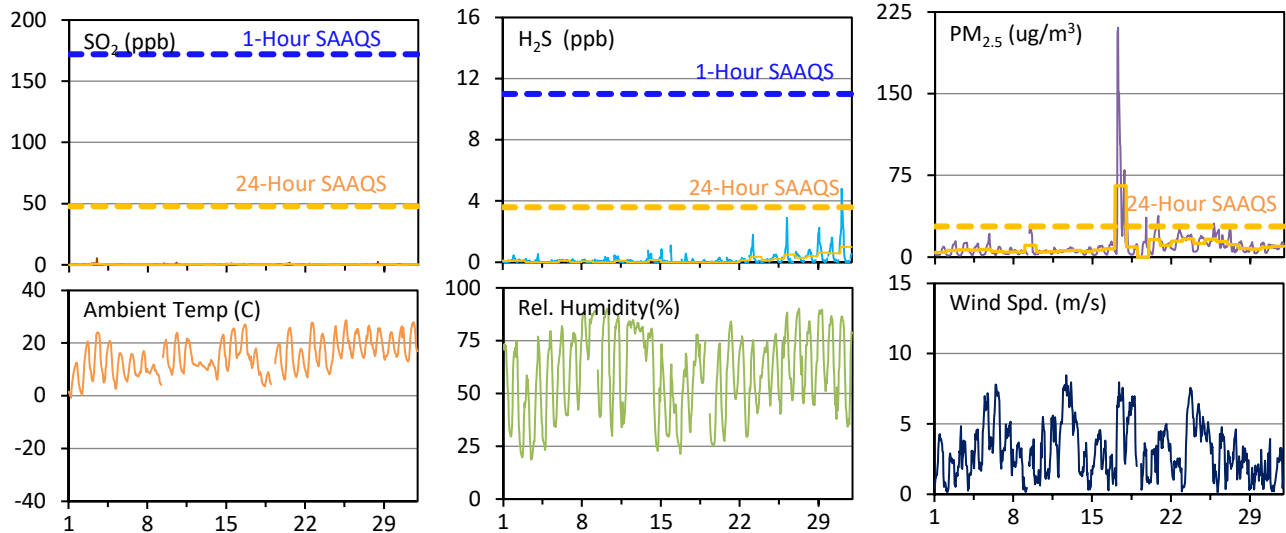
# SESAA Wauchope Station - May 2023 Summary Report

Pollutants		Month Records		24-Hour Records				1-Hour Records			
Name	Conc. Unit	Avg. Conc.	Uptime	Maximum		SAAQS Objective	Exceed Days	Maximum		SAAQS Objective	Exceed Hours
				Conc.	Time			Conc.	Time		
SO <sub>2</sub>	ppb	0.2	98.5%	0.6	May-3	48	0	5.6	May-03 11:00	172	0
H <sub>2</sub> S	ppb	0.2	98.5%	1.0	May-31	3.6	0	4.8	May-31 02:00	11	0
PM <sub>2.5</sub>	ug/m <sup>3</sup>	10	98.5%	65	May-17	28	1	211	May-17 06:00	-	-

SAAQS: Saskatchewan Ambient Air Quality Standards

\* Air Quality Standard refers to Saskatchewan Ambient Air Quality Standards (SAAQS).

\* Dotted lines are for SAAQS limits and solid lines are for averages.



Parameters	Unit	Color Code for Wind Spd & Pollutant Conc. Class					
Wind Speed	m/s	0.3 ≤ WS < 1.4	1.4 ≤ WS < 3.1	3.1 ≤ WS < 7.8	7.8 ≤ WS < 10.8	10.8 ≤ WS < 13.6	WS ≥ 13.6
SO <sub>2</sub>	ppb	0 ≤ C < 1	1 ≤ C < 5	5 ≤ C < 10	10 ≤ C < 57	57 ≤ C < 172	C ≥ 172
H <sub>2</sub> S	ppb	0 ≤ C < 1	1 ≤ C < 3.6	3.6 ≤ C < 5	5 ≤ C < 8	8 ≤ C < 10.8	C ≥ 10.8
PM <sub>2.5</sub>	ug/m <sup>3</sup>	0 ≤ C < 2	2 ≤ C < 4	4 ≤ C < 10	10 ≤ C < 20	20 ≤ C < 30	C ≥ 30

## Monthly Update

\*All data has been slope, intercept, and baseline corrected. Data may change after validation process.

\*All compliance parameters were within the Saskatchewan Ambient Air Quality Standards with the exception of one 24-hour PM 2.5 exceedance associated with wildfire smoke in the area.

\*All compliance parameters were greater than 90% operational.

\*11 hours of data for all parameters is flagged as "power failure" due to power issues on site.

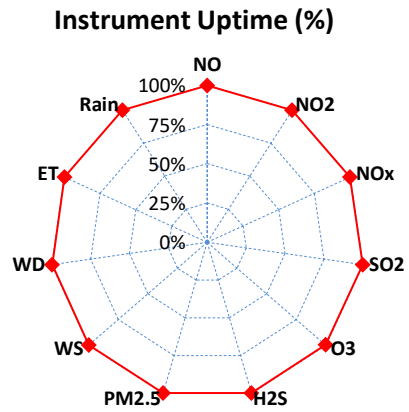
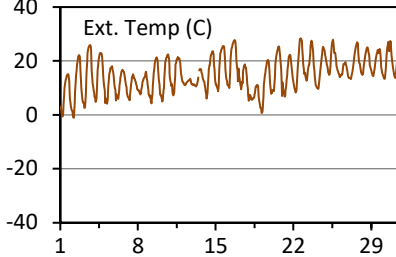
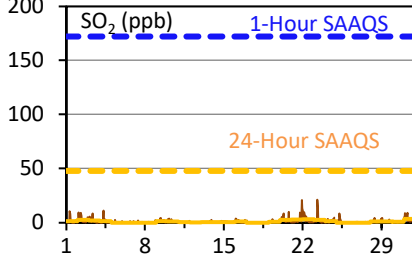
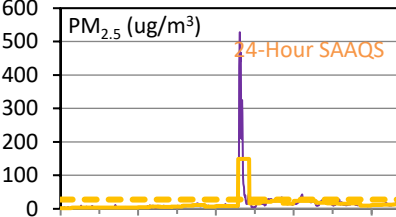
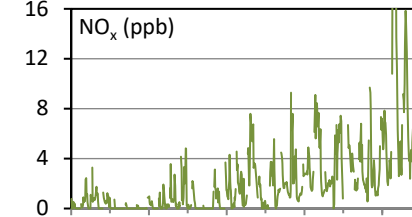
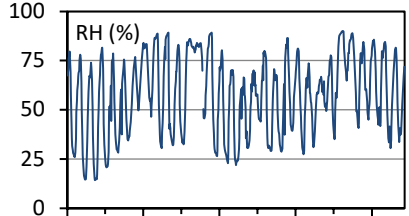
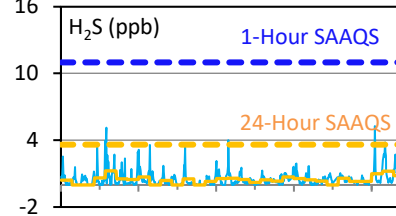
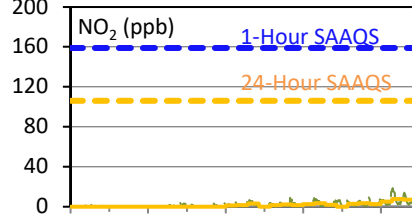
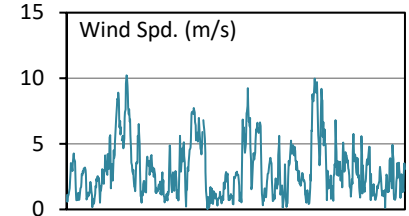
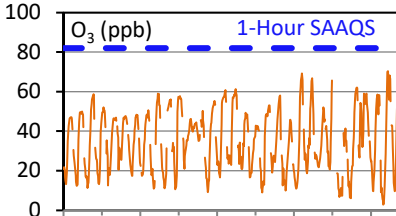
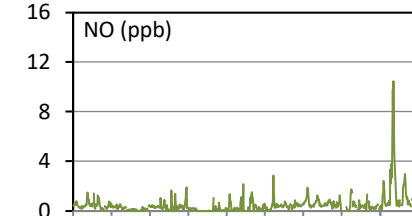
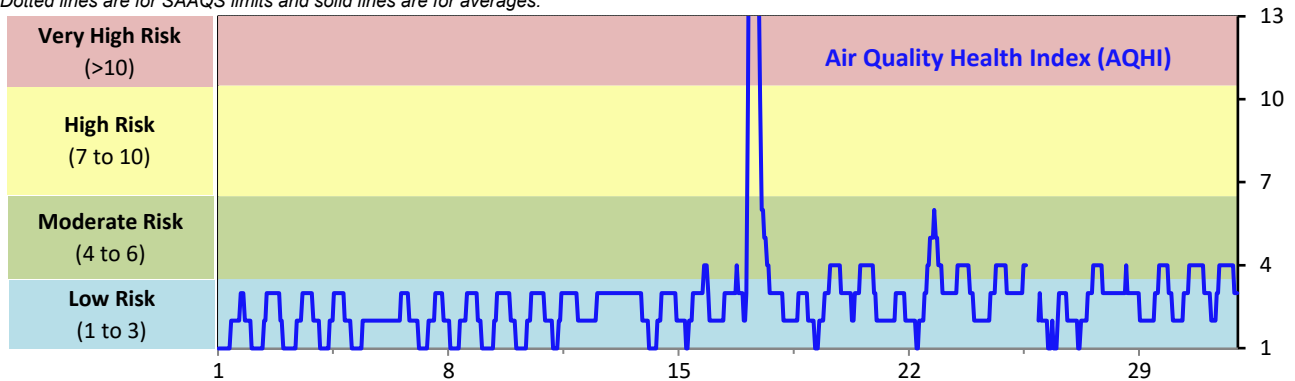
# SESAA Weyburn Station - May 2023 Summary Report

Pollutants		Month Records		24-Hour Records				1-Hour Records			
Name	Conc. Unit	Avg. Conc.	Uptime	Maximum		SAAQS Standard	Exceed Days	Maximum		SAAQS Standard	Exceed Hours
				Conc.	Time			Conc.	Time		
NO	ppb	0.5	99.9%	2.7	May-30	-	-	10.5	May-30 05:00	-	-
NO <sub>2</sub>	ppb	1.8	99.9%	7.8	May-30	106	0	18.6	May-30 01:00	159	0
NO <sub>x</sub>	ppb	2.2	99.9%	10.5	May-30	-	-	24.7	May-30 03:00	-	-
SO <sub>2</sub>	ppb	1.1	99.9%	3.4	May-31	48	0	21.0	May-21 22:00	172	0
O <sub>3</sub>	ppb	35	99.6%	47	May-28	-	-	70	May-30 13:00	82	0
H <sub>2</sub> S	ppb	0.5	99.9%	1.2	May-30	3.6	0	5.3	May-29 07:00	11	0
PM <sub>2.5</sub>	ug/m3	15	99.9%	150	May-17	28	1	528	May-17 03:00	-	-

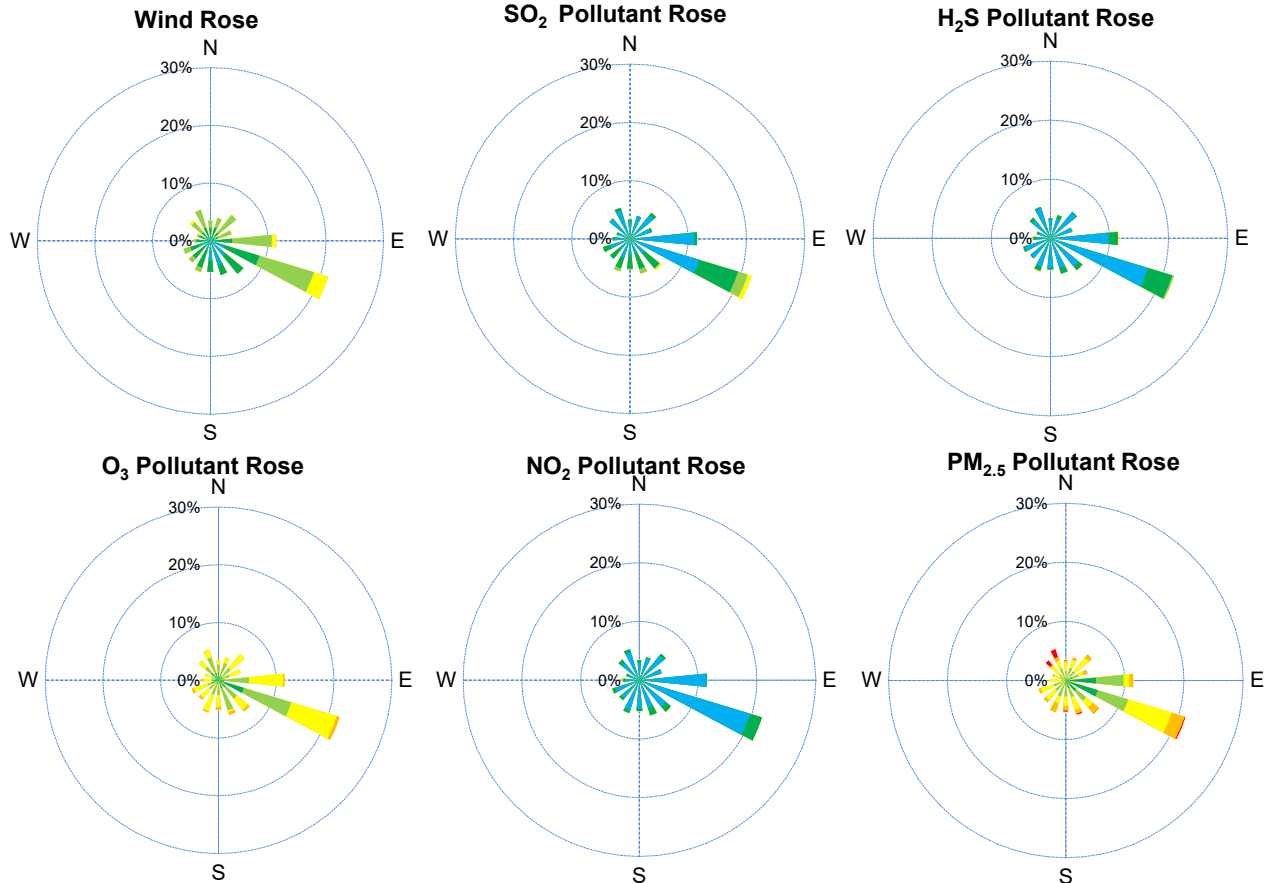
SAAQS: Saskatchewan Ambient Air Quality Standards

\* Air Quality Standard refers to Saskatchewan Ambient Air Quality Standards (SAAQS).

\* Dotted lines are for SAAQS limits and solid lines are for averages.



# SESAA Weyburn Station - May 2023 Summary Report



Parameters	Unit	Color Code for Wind Spd & Pollutant Conc. Class						
		0.3 ≤ WS < 1.4	1.4 ≤ WS < 3.1	3.1 ≤ WS < 7.8	7.8 ≤ WS < 10.8	10.8 ≤ WS < 13.6	WS ≥ 13.6	
Wind Speed	m/s	0 ≤ C < 1	1 ≤ C < 5	5 ≤ C < 10	10 ≤ C < 57	57 ≤ C < 172	C ≥ 172	
SO <sub>2</sub>	ppb	0 ≤ C < 5	5 ≤ C < 15	15 ≤ C < 30	30 ≤ C < 100	100 ≤ C < 212	C ≥ 212	
NO <sub>2</sub>	ppb	0 ≤ C < 1	1 ≤ C < 3.6	3.6 ≤ C < 5	5 ≤ C < 8	8 ≤ C < 10.8	C ≥ 10.8	
O <sub>3</sub>	ppb	0 ≤ C < 2	2 ≤ C < 4	4 ≤ C < 10	10 ≤ C < 20	20 ≤ C < 30	C ≥ 30	
H <sub>2</sub> S	ppb							
PM <sub>2.5</sub>	ug/m <sup>3</sup>							

## Monthly Update

\*All data has been slope, intercept, and baseline corrected. Data may change after validation process.

\*All compliance parameters were within the Saskatchewan Ambient Air Quality Standards with the exception of one 24-hour PM<sub>2.5</sub> exceedance associated with wildfire smoke in the area.

\*All compliance parameters were greater than 90% operational.

\*1 hours of data for all parameters is flagged as "power failure" due to intermittent power interruptions on site.