

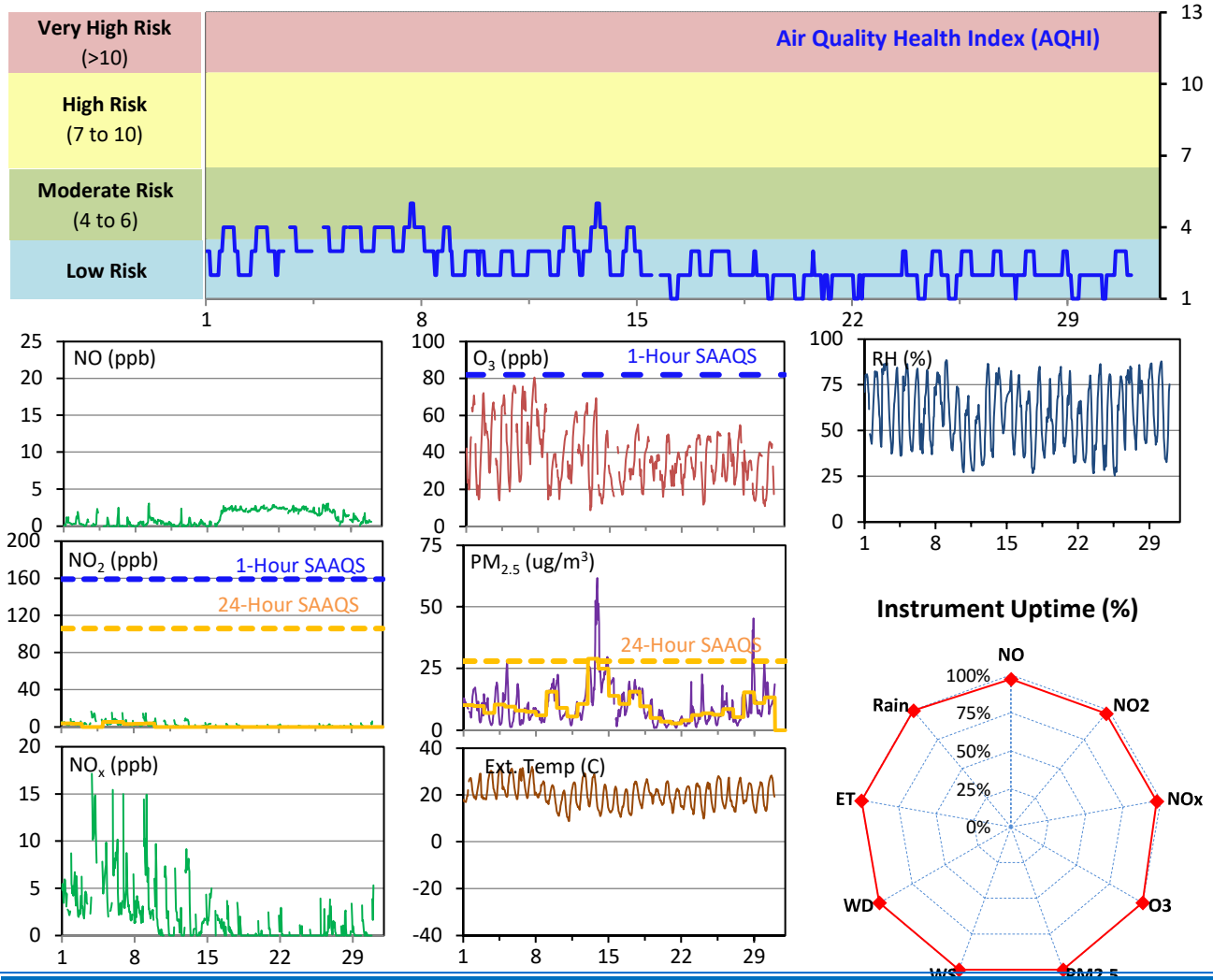
SESAA Esterhazy Station - June 2023 Summary Report

Pollutants		Month Records		24-Hour Records				1-Hour Records			
Name	Conc. Unit	Avg. Conc.	Uptime	Maximum		SAAQS Standard	Exceed Days	Maximum		SAAQS Standard	Exceed Hours
				Conc.	Time			Conc.	Time		
NO	ppb	1.1	97.2%	2.4	Jun-21	-	-	3.1	Jun-09 07:00	-	-
NO ₂	ppb	1.7	97.2%	5.5	Jun-6	106	0	16.8	Jun-03 21:00	159	0
NO _x	ppb	2.0	97.2%	5.7	Jun-6	-	-	17.2	Jun-03 21:00	-	-
O ₃	ppb	38	99.9%	61	Jun-7	-	-	81	Jun-07 15:00	82	0
PM _{2.5}	ug/m3	10	99.9%	29	Jun-13	28	1	62	Jun-13 21:00	-	-

SAAQS: Saskatchewan Ambient Air Quality Standards

* Air Quality Standard refers to Saskatchewan Ambient Air Quality Standards (SAAQS).

* Dotted lines are for SAAQS limits and solid lines are for averages.



Monthly Update

*All data has been slope, intercept, and baseline corrected. Data may change after validation process.

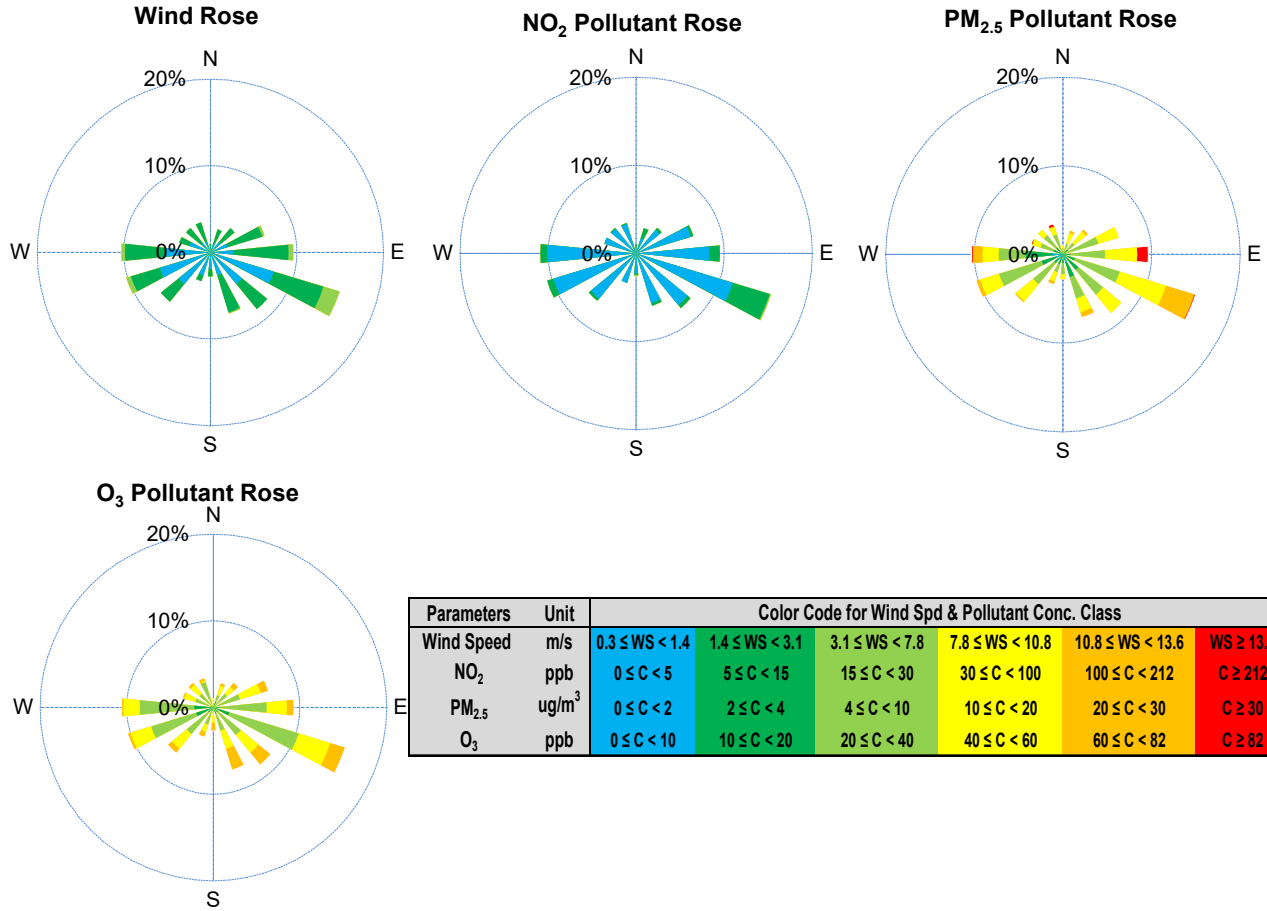
*All compliance parameters were within the Saskatchewan Ambient Air Quality Standards with the exception of one 24-hour PM 2.5 exceedance associated with wildfire smoke in the area.

*All compliance parameters were above 90% operational.

*19 hours of data for NO, NO_x, NO₂ flagged as "analyzer failure" due to intermittent analyzer issues.

*Routine quarterly calibrations were completed on June 15.

SESAA Esterhazy Station - June 2023 Summary Report



Exceedance Summary (24-Hour Average)											
Pollutant	Conc. ppb	Exceedance Date mmm-dd	WS	WD	AQHI	Rain	NO	NO ₂	NO _x	O ₃	PM _{2.5}
			m/s	deg	-	mm	ppb	ppb	ppb	ppb	ug/m ³
PM _{2.5}	29	Jun-13	1.6	152	4	0.0	0.3	-	-	37	29

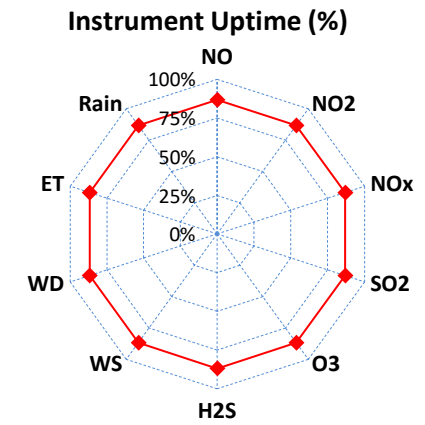
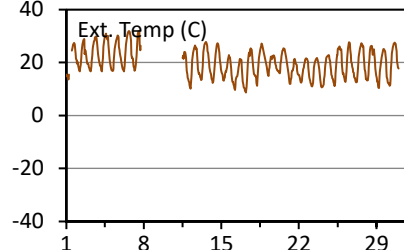
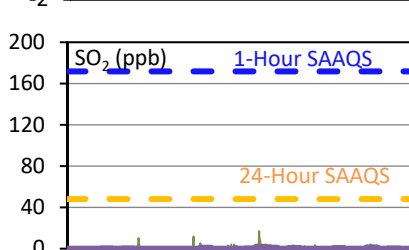
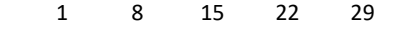
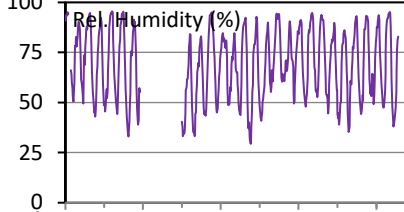
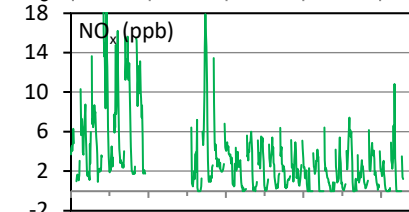
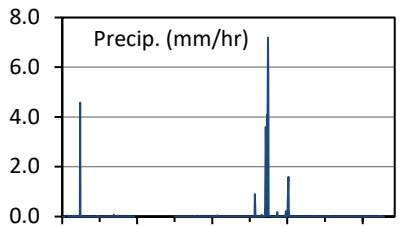
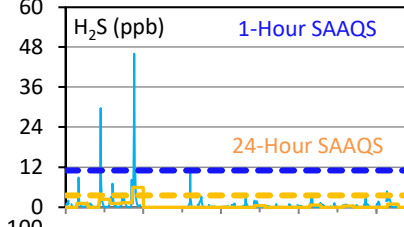
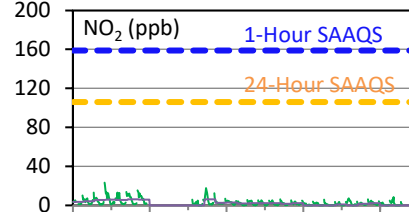
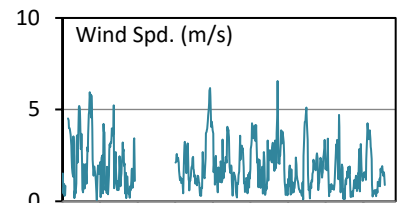
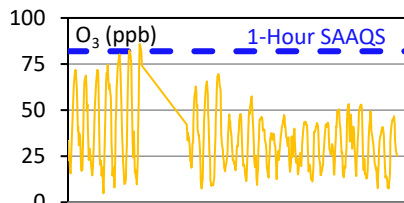
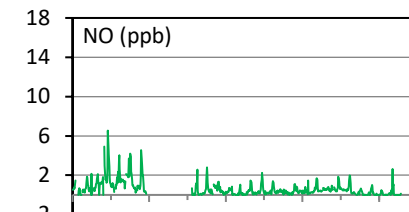
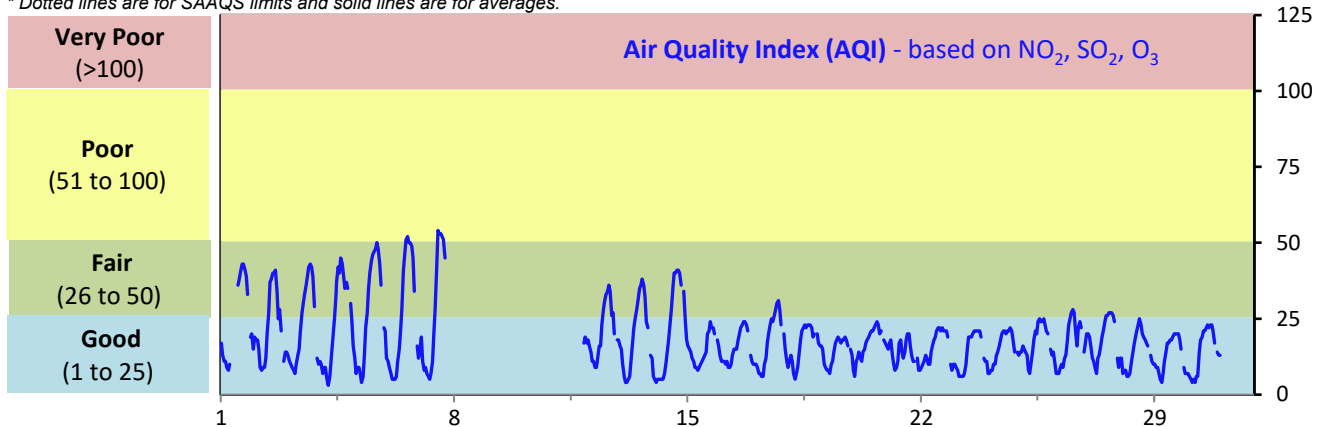
SESAA Glen Ewen Station - June 2023 Summary Report

Pollutants		Month Records		24-Hour Records				1-Hour Records			
Name	Conc. Unit	Avg. Conc.	Uptime	Maximum		SAAQS Standard	Exceed Days	Maximum		SAAQS Standard	Exceed Hours
				Conc.	Time			Conc.	Time		
NO	ppb	0.6	86.8%	1.8	Jun-4	-	-	6.6	Jun-04 05:00	-	-
NO ₂	ppb	2.8	86.8%	6.3	Jun-6	106	0	23.4	Jun-03 21:00	159	0
NO _x	ppb	3.4	86.8%	7.9	Jun-6	-	-	28.3	Jun-03 21:00	-	-
SO ₂	ppb	0.5	86.8%	2.0	Jun-18	48	0	17.1	Jun-18 07:00	172	0
O ₃	ppb	35	86.8%	46	Jun-5	-	-	86	Jun-07 12:00	82	4
H ₂ S	ppb	0.7	86.8%	5.9	Jun-7	3.6	1	46.0	Jun-07 04:00	11	5

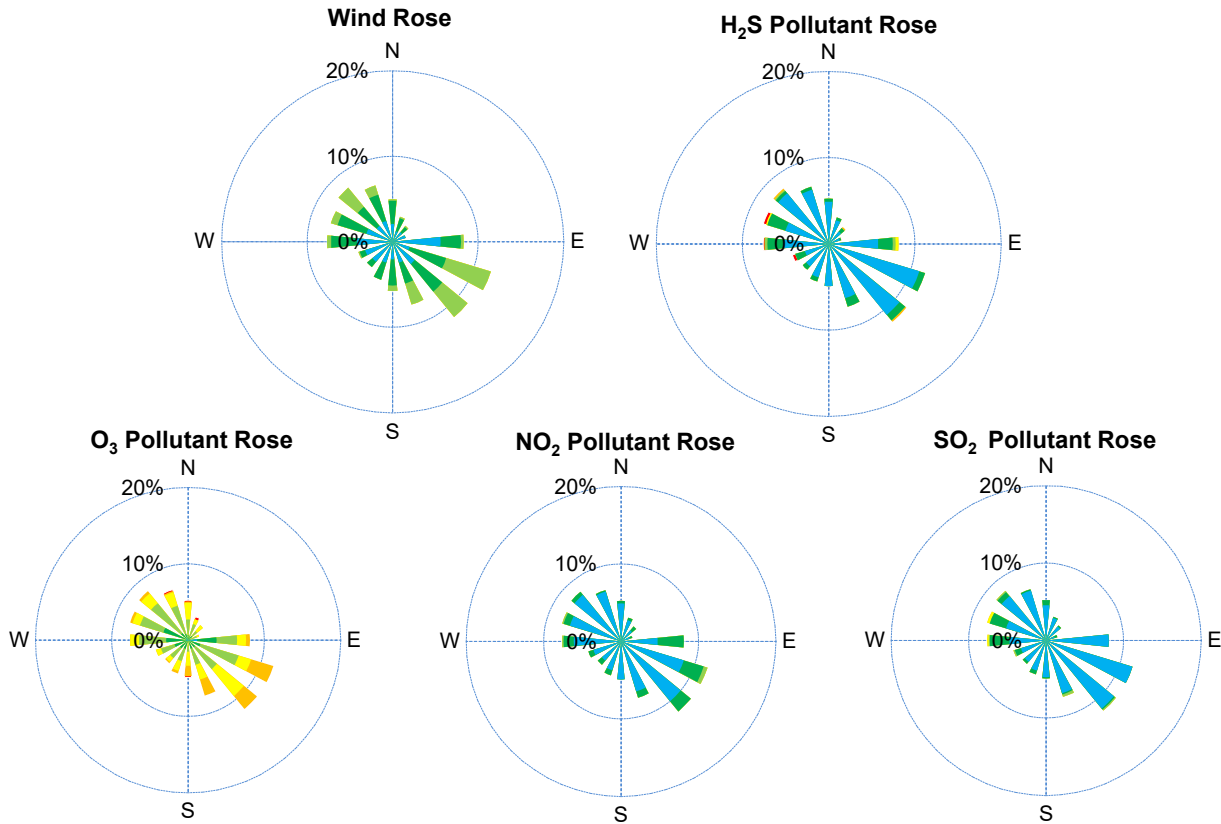
SAAQS: Saskatchewan Ambient Air Quality Standards

* Air Quality Standard refers to Saskatchewan Ambient Air Quality Standards (SAAQS).

* Dotted lines are for SAAQS limits and solid lines are for averages.



SESAA Glen Ewen Station - June 2023 Summary Report



Parameters	Unit	Color Code for Wind Spd & Pollutant Conc. Class						
Wind Speed	m/s	0.3 ≤ WS < 1.4	1.4 ≤ WS < 3.1	3.1 ≤ WS < 7.8	7.8 ≤ WS < 10.8	10.8 ≤ WS < 13.6	WS ≥ 13.6	
SO ₂	ppb	0 ≤ C < 1	1 ≤ C < 5	5 ≤ C < 10	10 ≤ C < 57	57 ≤ C < 172	C ≥ 172	
NO ₂	ppb	0 ≤ C < 5	5 ≤ C < 15	15 ≤ C < 30	30 ≤ C < 100	100 ≤ C < 212	C ≥ 212	
O ₃	ppb	0 ≤ C < 10	10 ≤ C < 20	20 ≤ C < 40	40 ≤ C < 60	60 ≤ C < 82	C ≥ 82	
H ₂ S	ppb	0 ≤ C < 1	1 ≤ C < 3.6	3.6 ≤ C < 5	5 ≤ C < 8	8 ≤ C < 10.8	C ≥ 10.8	

Monthly Update

- *All data has been slope, intercept, and baseline corrected. Data may change after validation process.
- *All compliance parameters were within the Saskatchewan Ambient Air Quality Standards with the exception of five 1-hour H₂S exceedance.
- *All compliance parameters were less than 90% operational.
- *95 hours of data for all parameters is flagged as "power failure" due to intermittent power interruptions on site.
- *Routine quarterly calibrations were completed on June 11.

Exceedance Summary

1-hour Exceedance Information			Summary of Other Parameters During Exceedance								
Pollutant	Conc. ppb	Exceedance Time mmm-dd hh:mm	WS m/s	WD deg	AQI -	Rain mm	SO ₂ ppb	NO ₂ ppb	O ₃ ppb	H ₂ S ppb	
H ₂ S	46.0	Jun-07 04:00	0.4	298	7	0.0	0.3	9.0	13	46.0	
H ₂ S	29.7	Jun-04 03:00	0.4	280	9	0.0	0.1	7.0	19	29.7	
H ₂ S	25.0	Jun-07 03:00	0.4	255	9	0.0	0.3	10.1	17	25.0	
H ₂ S	11.2	Jun-12 05:00	0.4	301	9	0.0	0.0	3.3	19	11.2	
H ₂ S	11.1	Jun-07 06:00	0.2	244	5	0.0	0.6	8.6	10	11.1	

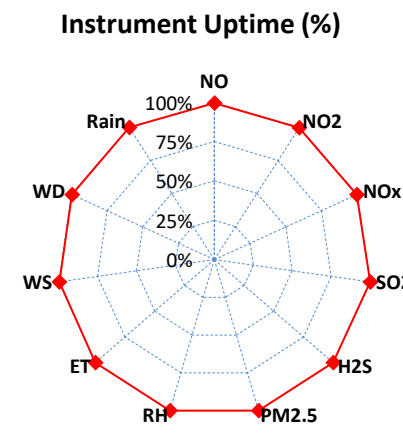
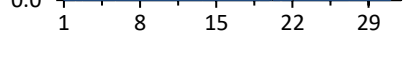
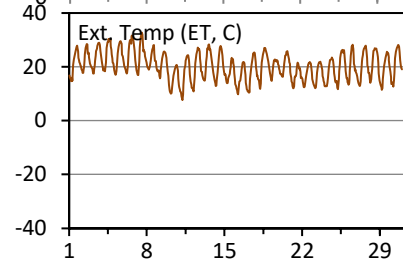
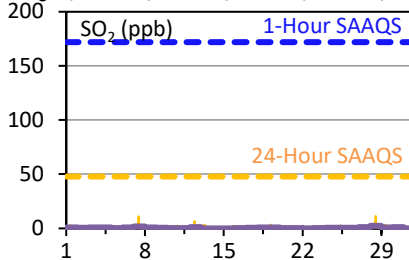
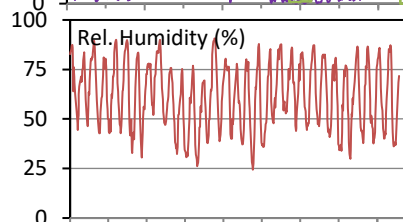
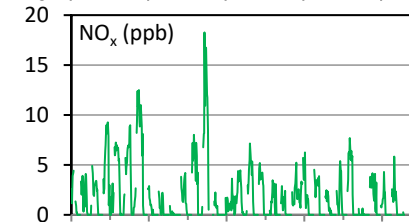
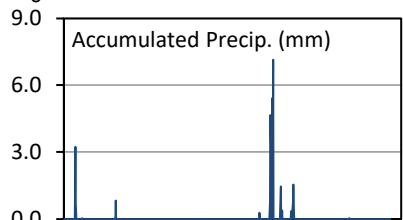
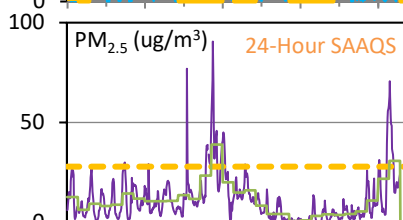
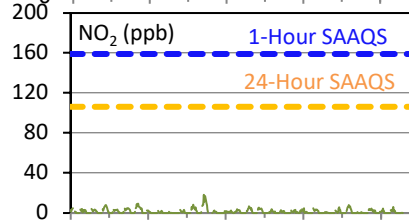
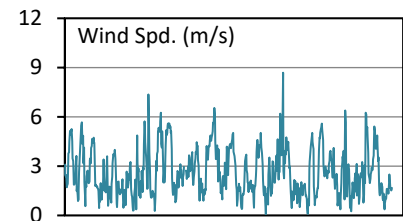
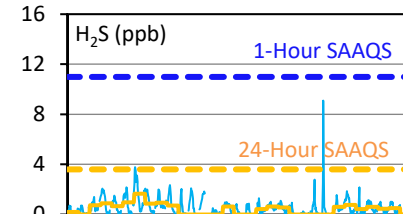
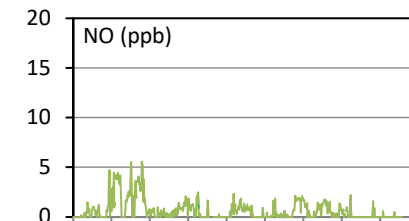
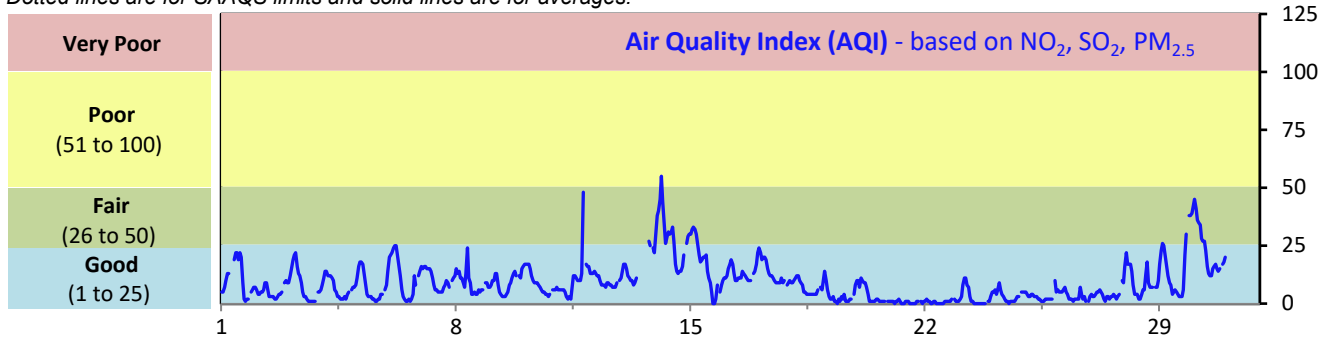
SESAA Oxbow Station - June 2023 Summary Report

Pollutants		Month Records		24-Hour Records				1-Hour Records			
Name	Conc. Unit	Avg. Conc.	Uptime	Maximum		SAAQS Standard	Exceed Days	Maximum		SAAQS Standard	Exceed Hours
				Conc.	Time			Conc.	Time		
NO	ppb	0.6	99.6%	2.3	Jun-6	-	-	5.6	Jun-07 06:00	-	-
NO ₂	ppb	1.4	99.6%	1.1	Jun-21	106	0	18.3	Jun-13 00:00	159	0
NO _x	ppb	1.9	99.6%	4.4	Jun-4	-	-	18.3	Jun-13 00:00	-	-
SO ₂	ppb	0.7	100.0%	2.3	Jun-28	48	0	11.5	Jun-28 11:00	172	0
H ₂ S	ppb	0.6	100.0%	1.7	Jun-7	3.6	0	9.1	Jun-24 01:00	11	0
PM _{2.5}	ug/m ³	12	100.0%	39	Jun-14	28	2	91	Jun-14 03:00	-	-

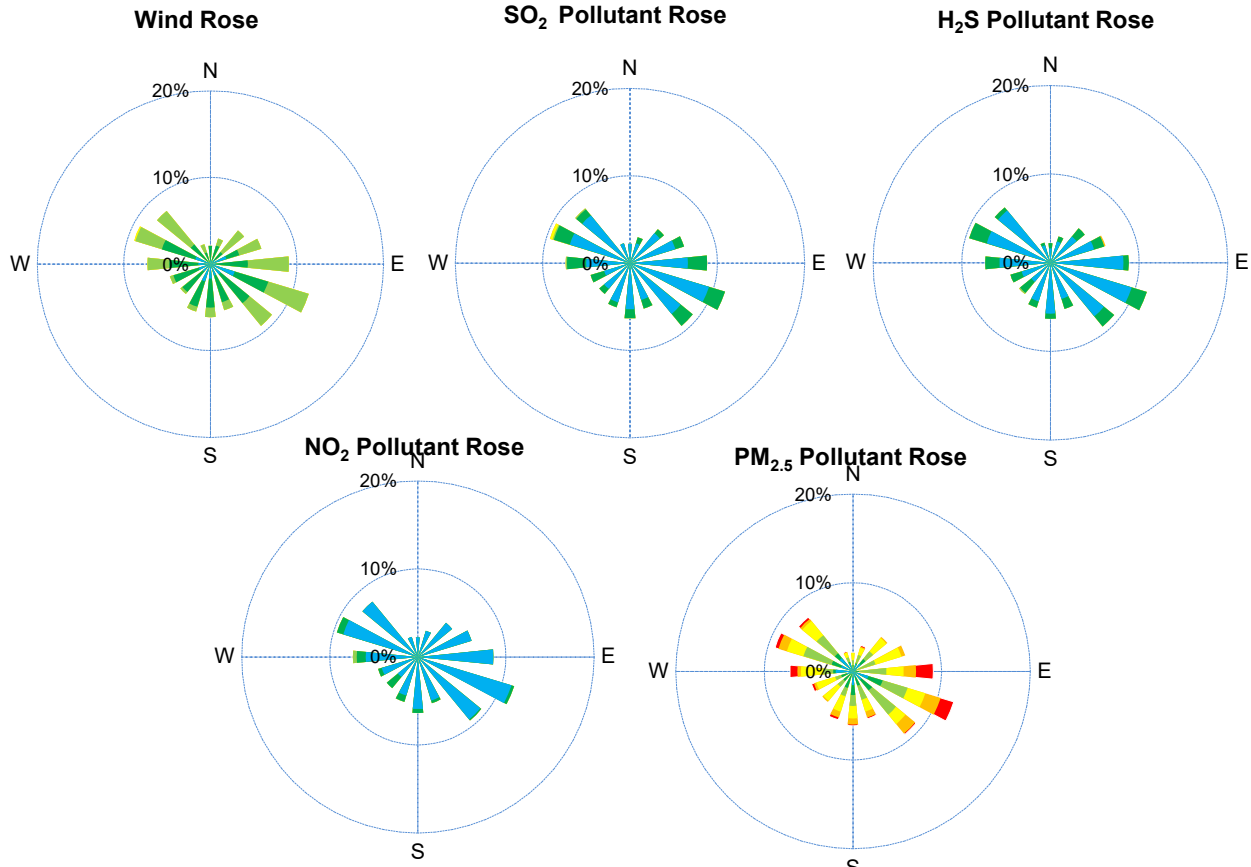
SAAQS: Saskatchewan Ambient Air Quality Standards

* Air Quality Standard refers to Saskatchewan Ambient Air Quality Standards (SAAQS).

* Dotted lines are for SAAQS limits and solid lines are for averages.



SESAA Oxbow Station - June 2023 Summary Report



Parameters	Unit	Color Code for Wind Spd & Pollutant Conc. Class						
Wind Speed	m/s	0.3 ≤ WS < 1.4	1.4 ≤ WS < 3.1	3.1 ≤ WS < 7.8	7.8 ≤ WS < 10.8	10.8 ≤ WS < 13.6	WS ≥ 13.6	
SO ₂	ppb	0 ≤ C < 1	1 ≤ C < 5	5 ≤ C < 10	10 ≤ C < 57	57 ≤ C < 172	C ≥ 172	
NO ₂	ppb	0 ≤ C < 5	5 ≤ C < 15	15 ≤ C < 30	30 ≤ C < 100	100 ≤ C < 212	C ≥ 212	
H ₂ S	ppb	0 ≤ C < 1	1 ≤ C < 3.6	3.6 ≤ C < 5	5 ≤ C < 8	8 ≤ C < 10.8	C ≥ 10.8	
PM _{2.5}	ug/m ³	0 ≤ C < 2	2 ≤ C < 4	4 ≤ C < 10	10 ≤ C < 20	20 ≤ C < 30	C ≥ 30	

Monthly Update

- *All data has been slope, intercept, and baseline corrected. Data may change after validation process.
- *All compliance parameters were within the Saskatchewan Ambient Air Quality Standards with the exception of two 24-hour PM_{2.5} exceedance attributed to wildfire smoke in the area.
- *All compliance parameters had greater than 90% operational uptime.
- * 3 hours of data flagged as "analyzer failure" for NO/NO₂/NO_x due to analyzer malfunction.

Exceedance Summary

24-hour Exceedance Information			Summary of Other Parameters During Exceedance								
Pollutant	24-hr Avg Conc.	Exceedance Date mmm-dd	WS m/s	WD deg	AQI -	Rain mm	ET C	SO ₂ ppb	NO ₂ ppb	H ₂ S ppb	PM _{2.5} ug/m ³
PM _{2.5}	39	Jun-14	4.6	102	29	0.0	20.2	-	-	-	39
PM _{2.5}	31	Jun-30	1.4	177	23	0.0	21.2	1.0	-	0.5	31

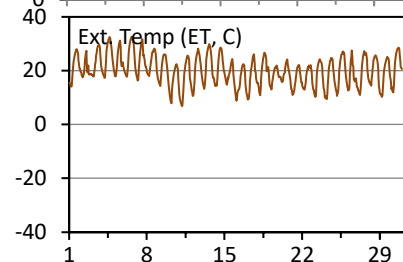
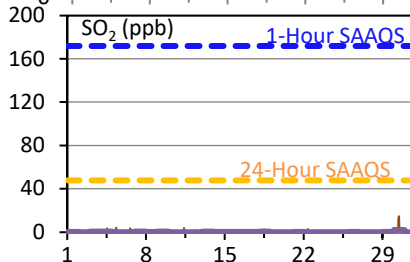
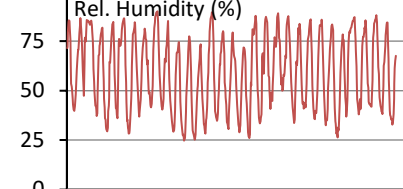
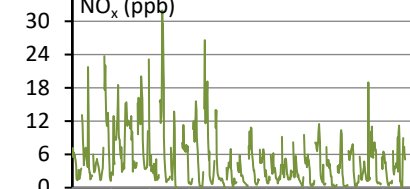
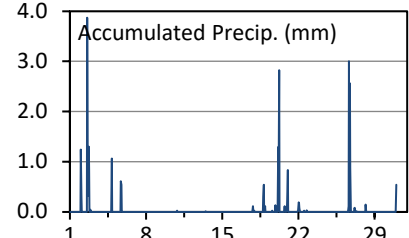
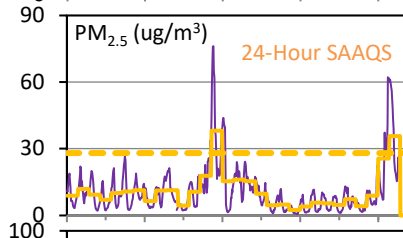
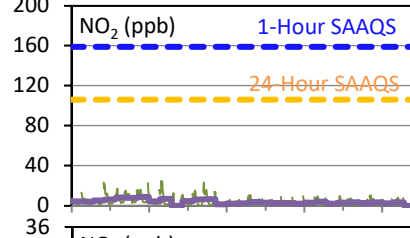
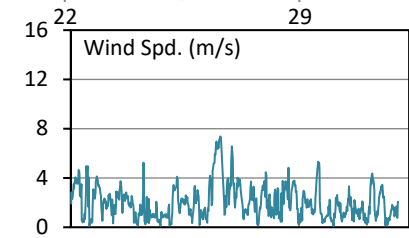
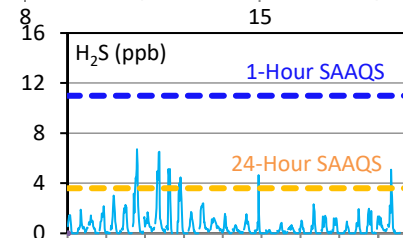
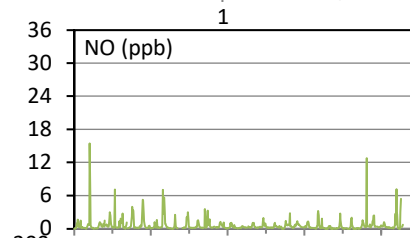
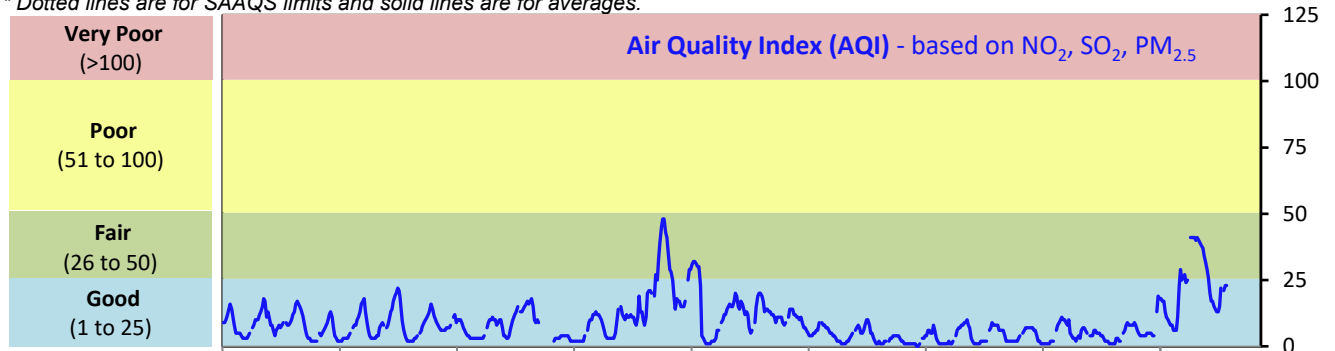
SESAA Stoughton Station - June 2023 Summary Report

Pollutants		Month Records		24-Hour Records				1-Hour Records			
Name	Conc. Unit	Avg. Conc.	Uptime	Maximum		SAAQS Standard	Exceed Days	Maximum		SAAQS Standard	Exceed Hours
				Conc.	Time			Conc.	Time		
NO	ppb	0.6	100.0%	1.2	Jun-9	-	-	15.4	Jun-02 10:00	-	-
NO ₂	ppb	4.1	100.0%	8.7	Jun-7	106	0	25.0	Jun-09 02:00	159	0
NO _x	ppb	4.7	100.0%	9.8	Jun-7	-	-	32.0	Jun-09 02:00	-	-
SO ₂	ppb	0.3	100.0%	2.2	Jun-30	48	0	14.8	Jun-30 11:00	172	0
H ₂ S	ppb	0.6	100.0%	1.9	Jun-7	3.6	0	6.7	Jun-07 06:00	11	0
PM _{2.5}	ug/m3	11	100.0%	38	Jun-14	28	2	76	Jun-14 04:00	-	-

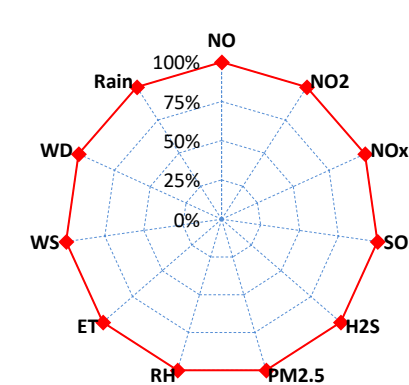
SAAQS: Saskatchewan Ambient Air Quality Standards

* Air Quality Standard refers to Saskatchewan Ambient Air Quality Standards (SAAQS).

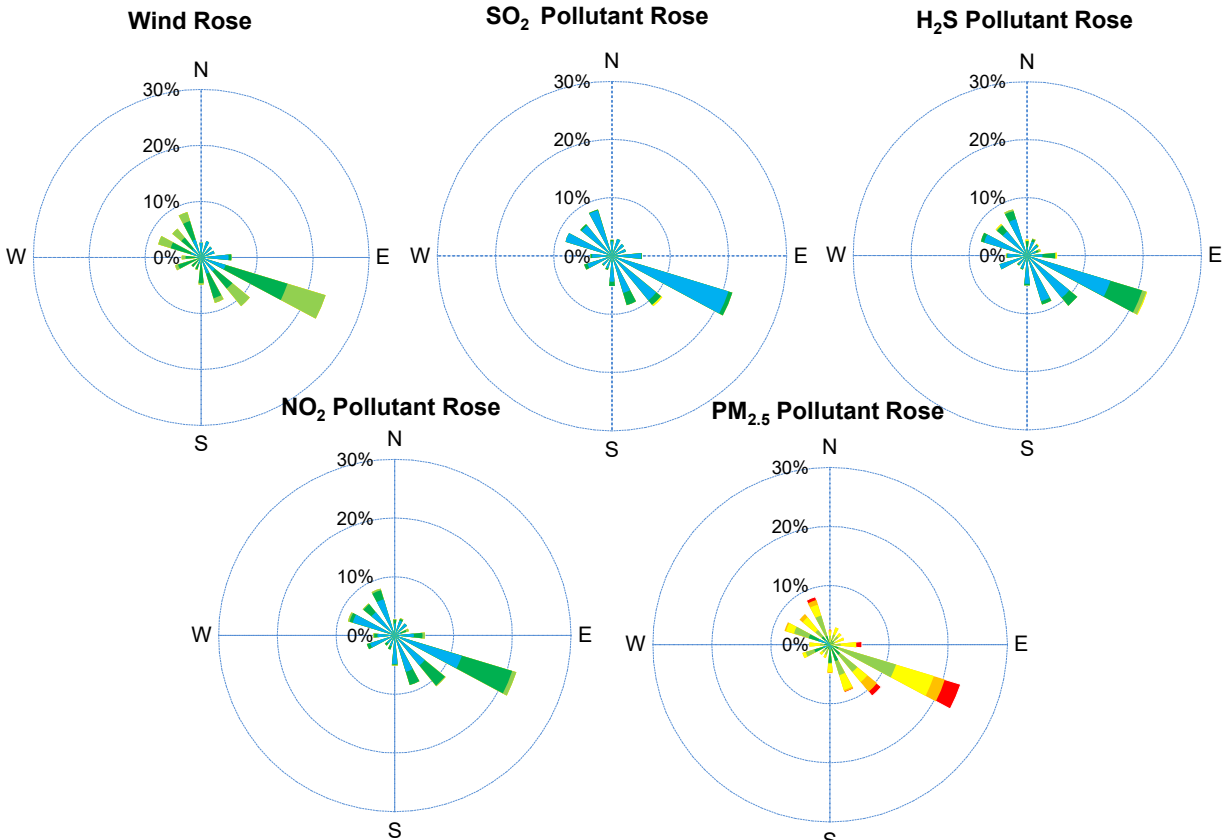
* Dotted lines are for SAAQS limits and solid lines are for averages.



Instrument Uptime (%)



SESAA Stoughton Station - June 2023 Summary Report



Parameters	Unit	Color Code for Wind Spd & Pollutant Conc. Class					
Wind Speed	m/s	0.3 ≤ WS < 1.4	1.4 ≤ WS < 3.1	3.1 ≤ WS < 7.8	7.8 ≤ WS < 10.8	10.8 ≤ WS < 13.6	WS ≥ 13.6
SO ₂	ppb	0 ≤ C < 1	1 ≤ C < 5	5 ≤ C < 10	10 ≤ C < 57	57 ≤ C < 172	C ≥ 172
NO ₂	ppb	0 ≤ C < 5	5 ≤ C < 15	15 ≤ C < 30	30 ≤ C < 100	100 ≤ C < 212	C ≥ 212
H ₂ S	ppb	0 ≤ C < 1	1 ≤ C < 3.6	3.6 ≤ C < 5	5 ≤ C < 8	8 ≤ C < 10.8	C ≥ 10.8
PM _{2.5}	ug/m ³	0 ≤ C < 2	2 ≤ C < 4	4 ≤ C < 10	10 ≤ C < 20	20 ≤ C < 30	C ≥ 30

Monthly Update

*All data has been slope, intercept, and baseline corrected. Data may change after validation process.

*All compliance parameters were within the Saskatchewan Ambient Air Quality Standards with the exception of two 24-hour PM_{2.5} exceedances associated with wildfire smoke in the area.

*All compliance parameters were greater than 90% operational.

*Routine quarterly calibrations were completed on June 10.

Exceedance Summary (24-Hour Average)

Pollutant (unit)	24-hr Avg Conc.	Exceedance Date mmm-dd	WS m/s	WD deg	AQI -	Rain mm	ET C	SO ₂ ppb	NO ₂ ppb	H ₂ S ppb	PM _{2.5} ug/m ³
24-hour Exceedance Information			WS	WD	AQI	Rain	ET	SO ₂	NO ₂	H ₂ S	PM _{2.5}
PM _{2.5}	38	Jun-14	6.0	124	28	0.0	21.2	0.3	1.2	0.6	38
PM _{2.5}	36	Jun-30	1.1	132	27	0.0	21.5	2.2	3.3	-	36

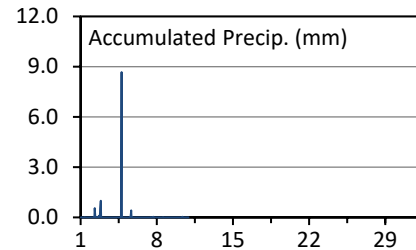
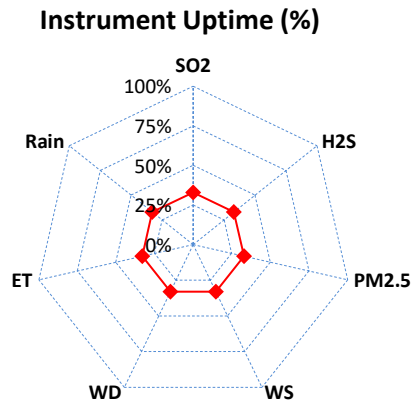
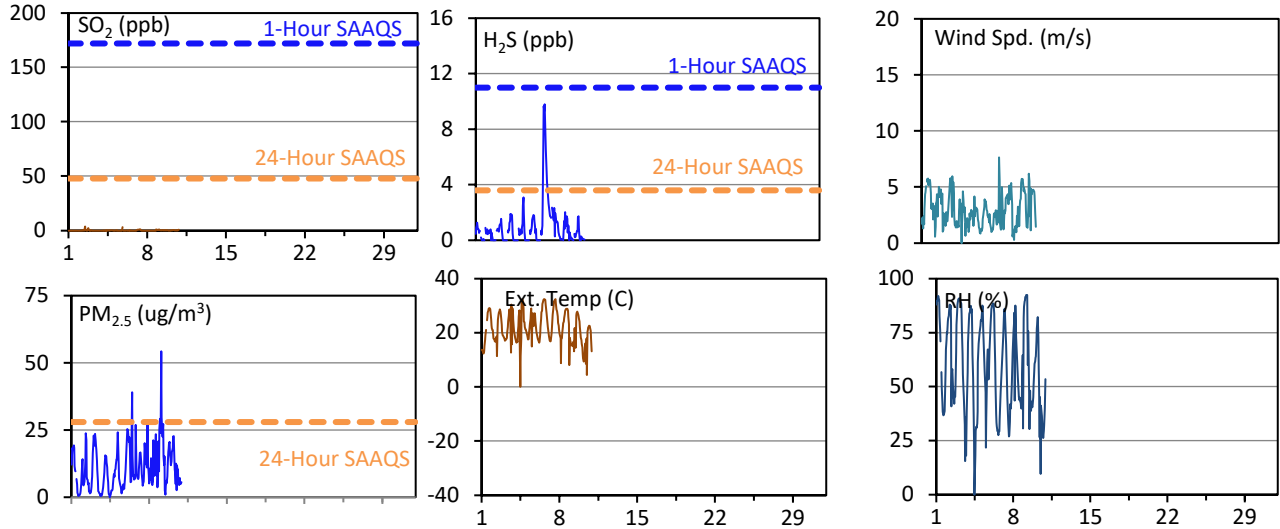
SESAA Torquay Station - June 2023 Summary Report

Pollutants		Month Records		24-Hour Records				1-Hour Records			
Name	Conc. Unit	Avg. Conc.	Uptime	Maximum		SAAQS Standard	Exceed Days	Maximum		SAAQS Standard	Exceed Hours
				Conc.	Time			Conc.	Time		
SO ₂	ppb	0.1	32.9%	0.3	Jun-10	48	0	3.6	Jun-02 11:00	172	0
H ₂ S	ppb	0.9	32.9%	4.2	Jun-7	3.6	1	9.8	Jun-07 05:00	11	0
PM _{2.5}	ug/m3	11	32.9%	17	Jun-9	28	0	54	Jun-09 02:00	-	-

SAAQS: Saskatchewan Ambient Air Quality Standards

* Air Quality Standard refers to Saskatchewan Ambient Air Quality Standards (SAAQS).

* Dotted lines are for SAAQS limits and solid lines are for averages.



Monthly Update

*All data has been slope, intercept, and baseline corrected. Data may change after validation process.

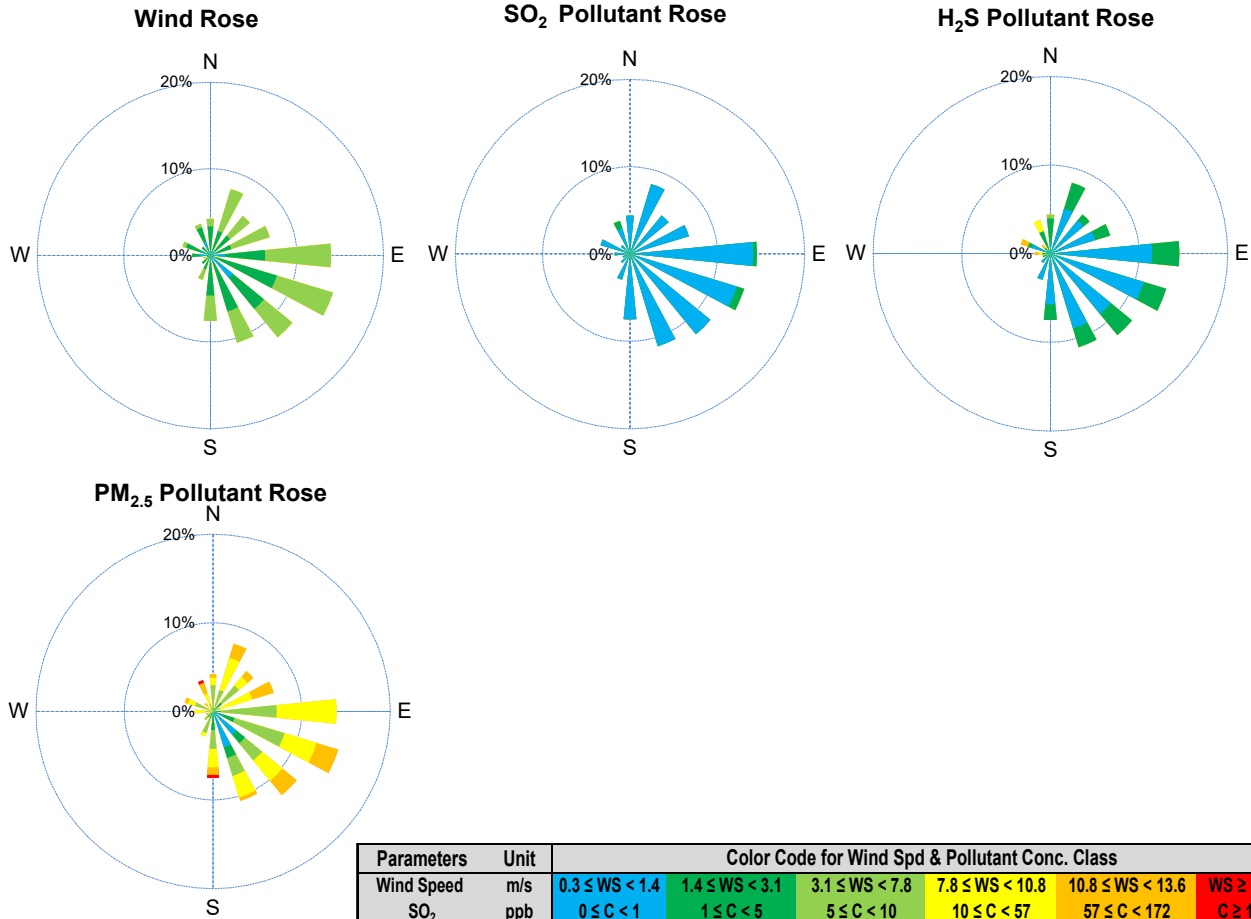
*All compliance parameters were within the Saskatchewan Ambient Air Quality Standards.

*All compliance parameters were less than 90% operational.

*483 hours of data for all parameters is flagged as "analyzer failure" due to removal of the PC.

*Routine quarterly calibrations were not completed.

SESAA Torquay Station - June 2023 Summary Report



Parameters	Unit	Color Code for Wind Spd & Pollutant Conc. Class					
Wind Speed	m/s	$0.3 \leq WS < 1.4$	$1.4 \leq WS < 3.1$	$3.1 \leq WS < 7.8$	$7.8 \leq WS < 10.8$	$10.8 \leq WS < 13.6$	$WS \geq 13.6$
SO ₂	ppb	$0 \leq C < 1$	$1 \leq C < 5$	$5 \leq C < 10$	$10 \leq C < 57$	$57 \leq C < 172$	$C \geq 172$
NO ₂	ppb	$0 \leq C < 5$	$5 \leq C < 15$	$15 \leq C < 30$	$30 \leq C < 100$	$100 \leq C < 212$	$C \geq 212$
O ₃	ppb	$0 \leq C < 10$	$10 \leq C < 20$	$20 \leq C < 40$	$40 \leq C < 60$	$60 \leq C < 82$	$C \geq 82$
H ₂ S	ppb	$0 \leq C < 1$	$1 \leq C < 3.6$	$3.6 \leq C < 5$	$5 \leq C < 8$	$8 \leq C < 10.8$	$C \geq 10.8$
PM _{2.5}	ug/m ³	$0 \leq C < 2$	$2 \leq C < 4$	$4 \leq C < 10$	$10 \leq C < 20$	$20 \leq C < 30$	$C \geq 30$

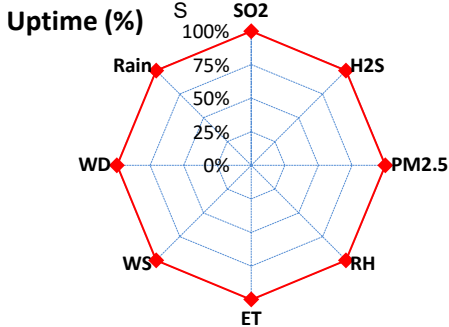
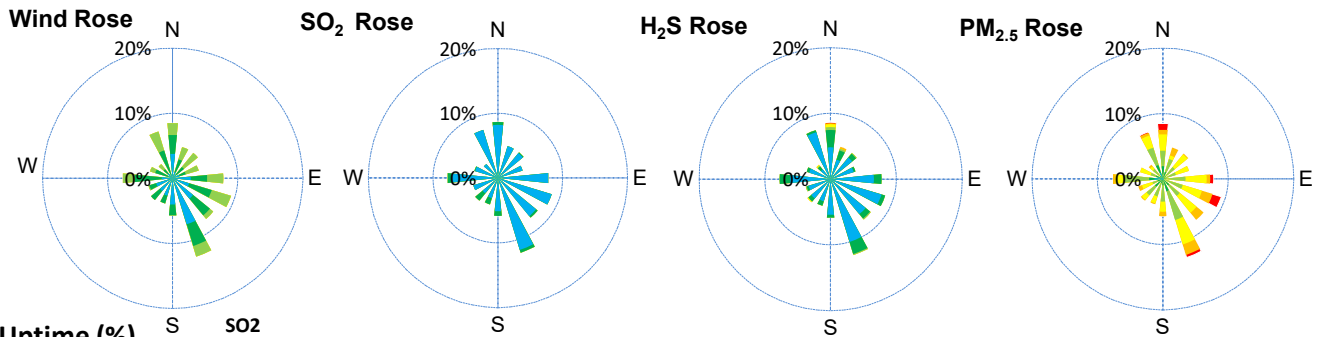
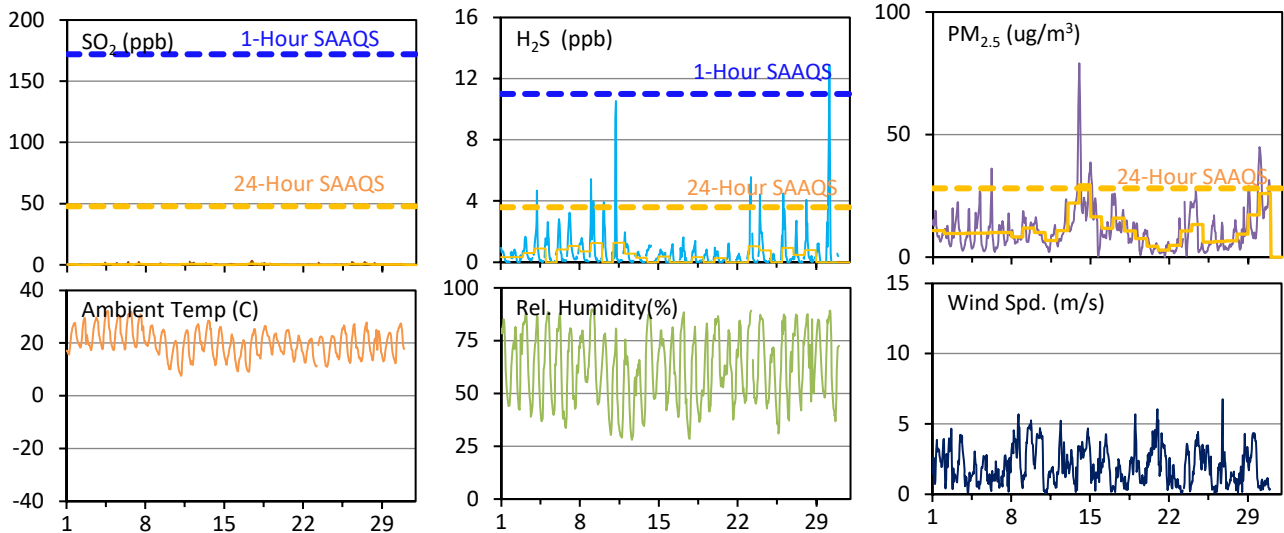
SESAA Wauchope Station - June 2023 Summary Report

Pollutants		Month Records		24-Hour Records				1-Hour Records			
Name	Conc. Unit	Avg. Conc.	Uptime	Maximum		SAAQS Objective	Exceed Days	Maximum		SAAQS Objective	Exceed Hours
				Conc.	Time			Conc.	Time		
SO ₂	ppb	0.3	99.7%	0.8	Jun-17	48	0	3.4	Jun-17 10:00	172	0
H ₂ S	ppb	0.6	99.7%	1.3	Jun-11	3.6	0	12.9	Jun-30 04:00	11	1
PM _{2.5}	ug/m ³	11	99.7%	29	Jun-14	28	1	79	Jun-14 00:00	-	-

SAAQS: Saskatchewan Ambient Air Quality Standards

* Air Quality Standard refers to Saskatchewan Ambient Air Quality Standards (SAAQS).

* Dotted lines are for SAAQS limits and solid lines are for averages.



Parameters	Unit	Color Code for Wind Spd & Pollutant Conc. Class					
Wind Speed	m/s	0.3 ≤ WS < 1.4	1.4 ≤ WS < 3.1	3.1 ≤ WS < 7.8	7.8 ≤ WS < 10.8	10.8 ≤ WS < 13.6	WS ≥ 13.6
SO ₂	ppb	0 ≤ C < 1	1 ≤ C < 5	5 ≤ C < 10	10 ≤ C < 57	57 ≤ C < 172	C ≥ 172
H ₂ S	ppb	0 ≤ C < 1	1 ≤ C < 3.6	3.6 ≤ C < 5	5 ≤ C < 8	8 ≤ C < 10.8	C ≥ 10.8
PM _{2.5}	ug/m ³	0 ≤ C < 2	2 ≤ C < 4	4 ≤ C < 10	10 ≤ C < 20	20 ≤ C < 30	C ≥ 30

Monthly Update

- *All data has been slope, intercept, and baseline corrected. Data may change after validation process.
- *All compliance parameters were within the Saskatchewan Ambient Air Quality Standards with the exception of one 24-hour PM 2.5 exceedance associated with wildfire smoke in the area. A 1-hour H₂S exceedance was also recorded.
- *All compliance parameters were greater than 90% operational.
- *2 hours of data for all parameters is flagged as "power failure" due to power issues on site.
- *Routine quarterly calibrations were completed on June 14.

SESAA Wauchope Station - June 2023 Summary Report

Exceedance Summary (1-Hour Average)										
1-hour Exceedance Information			Summary of Other Parameters During Exceedance							
Pollutant	Conc. ppb	Exceedance Time mmm-dd hh:mm	WS m/s	WD deg	Rain mm	ET C	SO ₂ ppb	H ₂ S ppb	PM _{2.5} ug/m3	
H2S	12.9	Jun-30 04:00	0.3	3	0.0	12.3	0.2	12.9	31	

Exceedance Summary (24-Hour Average)										
Pollutant	Conc. ppb	Exceedance Date mmm-dd	WS m/s	WD deg	Rain mm	ET C	SO ₂ ppb	H ₂ S ppb	PM _{2.5} ug/m3	
24-hour Exceedance Information			WS	WD	Rain	ET	SO ₂	H ₂ S	PM _{2.5}	
PM2.5	29	Jun-14	3.4	107	0.0	18.8	-	-	29	

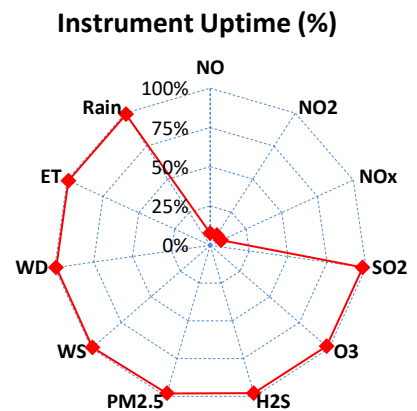
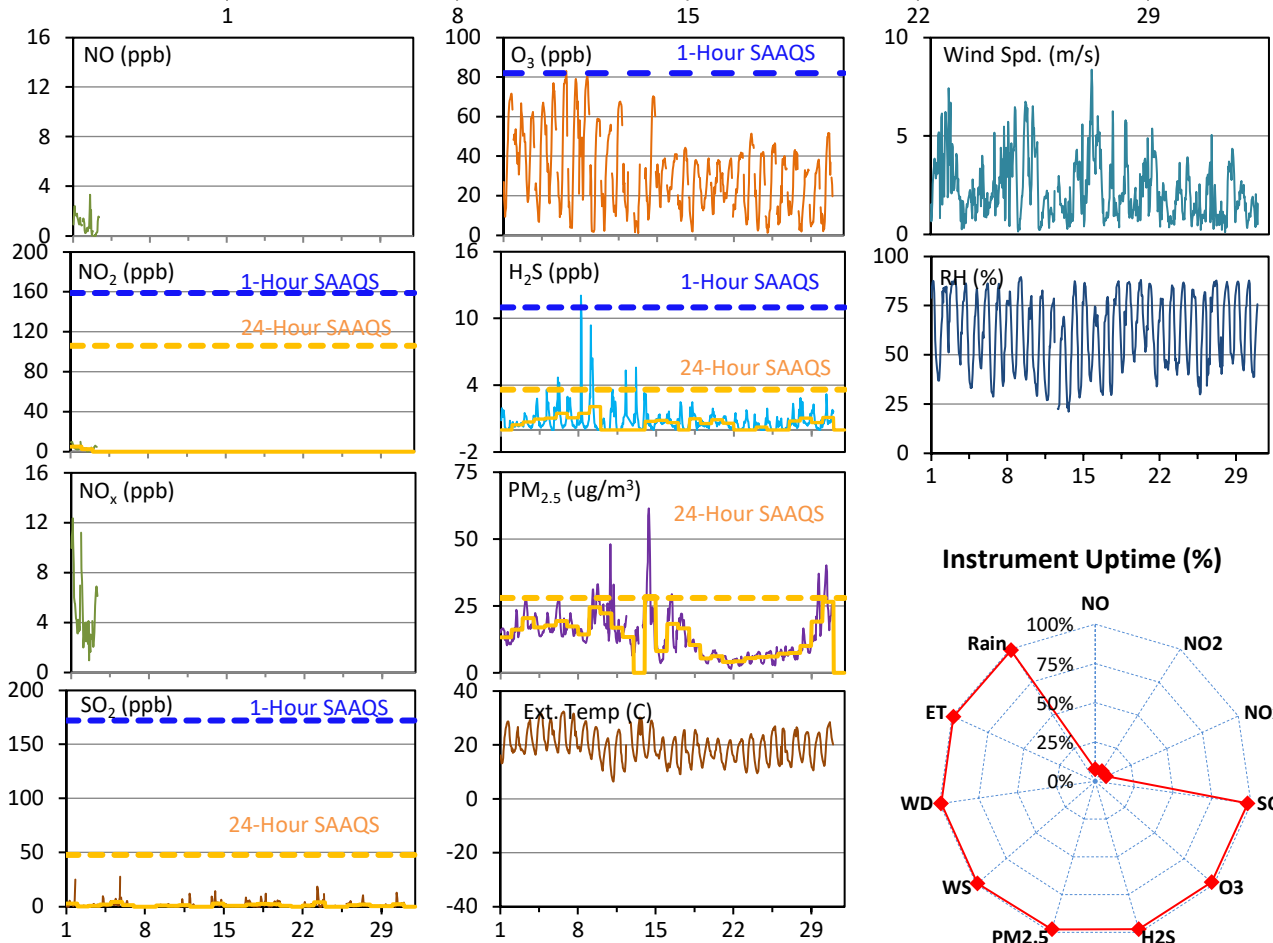
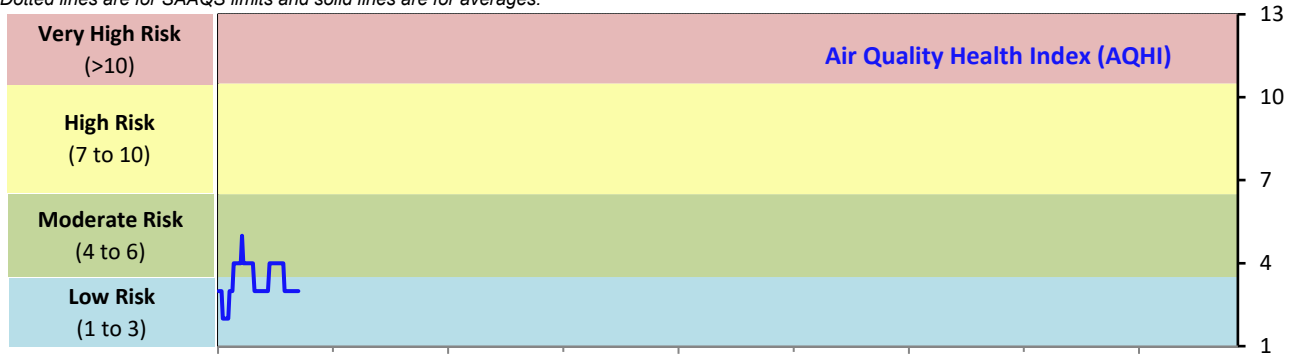
SESAA Weyburn Station - June 2023 Summary Report

Pollutants		Month Records		24-Hour Records				1-Hour Records			
Name	Conc. Unit	Avg. Conc.	Uptime	Maximum		SAAQS Standard	Exceed Days	Maximum		SAAQS Standard	Exceed Hours
				Conc.	Time			Conc.	Time		
NO	ppb	0.9	7.7%	1.4	Jun-1	-	-	3.3	Jun-02 13:00	-	-
NO ₂	ppb	3.9	7.7%	5.3	Jun-1	106	0	10.0	Jun-01 21:00	159	0
NO _x	ppb	4.9	7.7%	6.6	Jun-1	-	-	12.4	Jun-01 03:00	-	-
SO ₂	ppb	1.3	98.0%	4.3	Jun-5	48	0	27.7	Jun-05 19:00	172	0
O ₃	ppb	32	98.0%	54	Jun-8	-	-	83	Jun-06 17:00	82	1
H ₂ S	ppb	0.8	98.0%	2.1	Jun-9	3.6	0	12.1	Jun-08 05:00	11	1
PM _{2.5}	ug/m3	14	98.1%	29	Jun-14	28	1	62	Jun-14 08:00	-	-

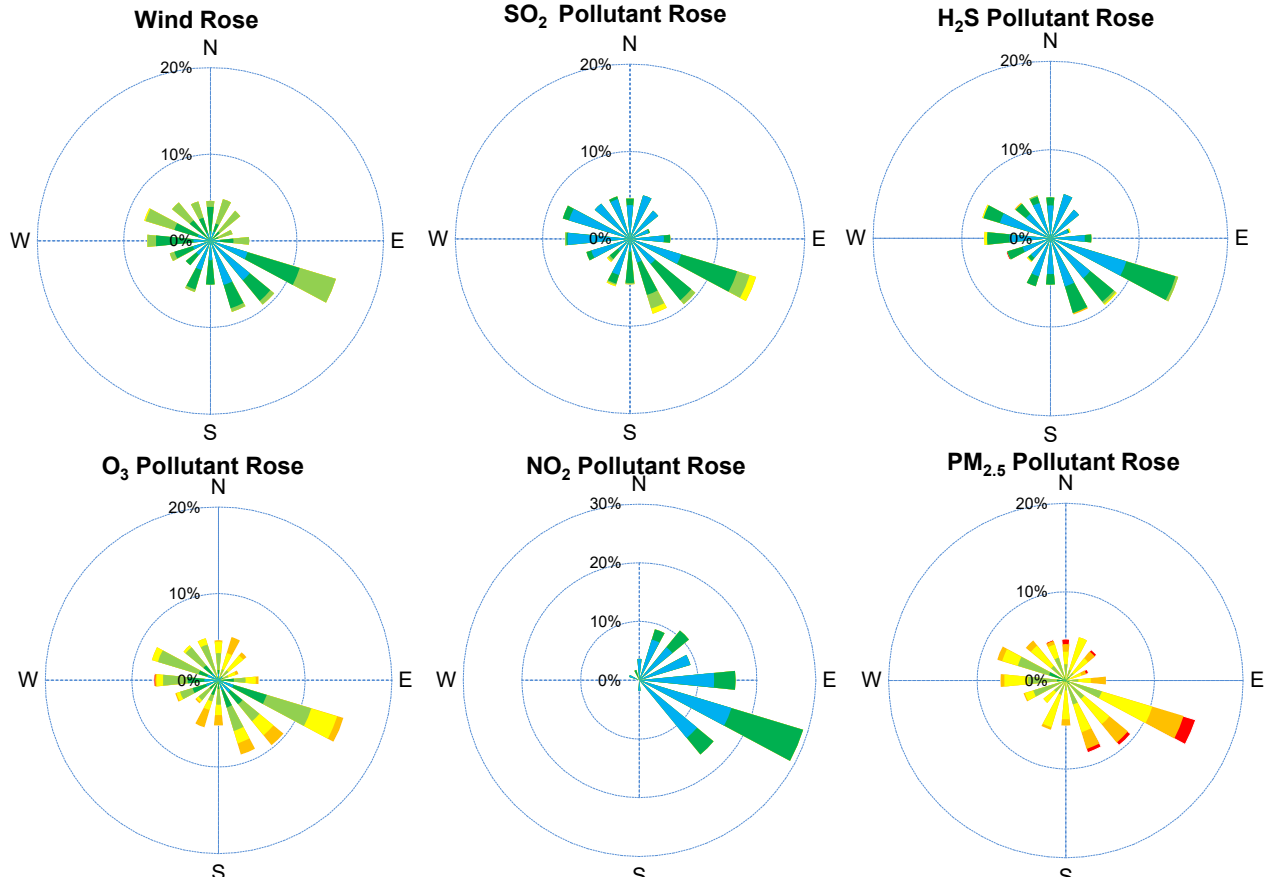
SAAQS: Saskatchewan Ambient Air Quality Standards

* Air Quality Standard refers to Saskatchewan Ambient Air Quality Standards (SAAQS).

* Dotted lines are for SAAQS limits and solid lines are for averages.



SESAA Weyburn Station - June 2023 Summary Report



Parameters	Unit	Color Code for Wind Spd & Pollutant Conc. Class						
Wind Speed	m/s	0.3 ≤ WS < 1.4	1.4 ≤ WS < 3.1	3.1 ≤ WS < 7.8	7.8 ≤ WS < 10.8	10.8 ≤ WS < 13.6	WS ≥ 13.6	
SO ₂	ppb	0 ≤ C < 1	1 ≤ C < 5	5 ≤ C < 10	10 ≤ C < 57	57 ≤ C < 172	C ≥ 172	
NO ₂	ppb	0 ≤ C < 5	5 ≤ C < 15	15 ≤ C < 30	30 ≤ C < 100	100 ≤ C < 212	C ≥ 212	
O ₃	ppb	0 ≤ C < 10	10 ≤ C < 20	20 ≤ C < 40	40 ≤ C < 60	60 ≤ C < 82	C ≥ 82	
H ₂ S	ppb	0 ≤ C < 1	1 ≤ C < 3.6	3.6 ≤ C < 5	5 ≤ C < 8	8 ≤ C < 10.8	C ≥ 10.8	
PM _{2.5}	ug/m ³	0 ≤ C < 2	2 ≤ C < 4	4 ≤ C < 10	10 ≤ C < 20	20 ≤ C < 30	C ≥ 30	

Monthly Update

- *All data has been slope, intercept, and baseline corrected. Data may change after validation process.
- *All compliance parameters were within the Saskatchewan Ambient Air Quality Standards with the exception of one 24-hour PM_{2.5} exceedance associated with wildfire smoke in the area. 1-hour H₂S and a 1-hour Ozone exceedances were also recorded.
- *All compliance parameters were greater than 90% operational with the exception of NO, NO₂, NO_x.
- *663 hours of data for all parameters is flagged as "analyzer failure" the analyzer was removed from service on June 3.

Exceedance Summary (24-Hour Average)

Pollutant	Conc. ppb	Exceedance Date mmm-dd	WS	WD	AQHI	Rain	SO ₂	NO ₂	O ₃	H ₂ S	PM _{2.5}
			m/s	deg	-	mm	ppb	ppb	ppb	ppb	ug/m ³
24-hour Exceedance Information			WS	WD	AQHI	Rain	SO ₂	NO ₂	O ₃	H ₂ S	PM _{2.5}
PM _{2.5}	29	Jun-14	2.9	143	-	0.0	2.6	-	38	0.7	29

Exceedance Summary

1-hour Exceedance Information			Summary of Other Parameters During Exceedance								
Pollutant	Conc. ppb	Exceedance Time mmm-dd hh:mm	WS	WD	AQHI	Rain	SO ₂	NO ₂	O ₃	H ₂ S	PM _{2.5}
			m/s	deg	-	mm	ppb	ppb	ppb	ppb	ug/m ³
H ₂ S	12.1	Jun-08 05:00	0.4	243	0	0.0	0.0	0.0	18	12.1	16
O ₃	83.0	Jun-06 17:00	2.6	264	0	0.0	0.3	0.0	83	0.4	20