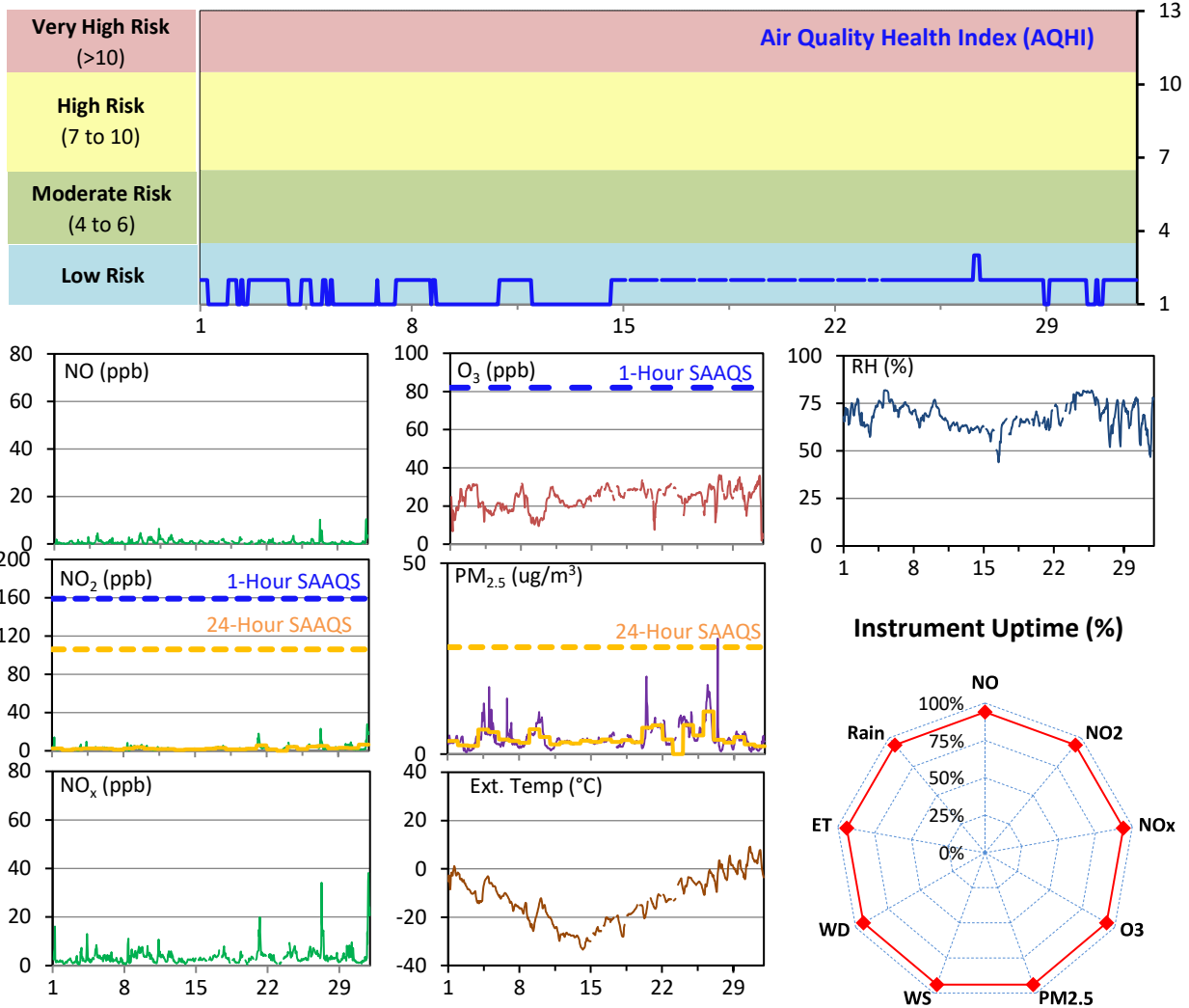


# SESAA Esterhazy Station - January 2024 Summary Report

Pollutants		Month Records		24-Hour Records				1-Hour Records			
Name	Conc. Unit	Avg. Conc.	Uptime	Maximum		SAAQS Standard	Exceed Days	Maximum		SAAQS Standard	Exceed Hours
				Conc.	Time			Conc.	Time		
NO	ppb	0.8	94.0%	1.7	Jan-11	-	-	10.5	Jan-31 20:00	-	-
NO <sub>2</sub>	ppb	2.6	94.0%	6.5	Jan-31	106	0	27.8	Jan-31 20:00	159	0
NO <sub>x</sub>	ppb	3.6	94.0%	8.5	Jan-31	-	-	38.2	Jan-31 20:00	-	-
O <sub>3</sub>	ppb	23.9	94.0%	30.1	Jan-29	-	-	36.3	Jan-27 15:00	82	0
PM <sub>2.5</sub>	ug/m3	4.3	94.0%	11.2	Jan-26	28	0	30.3	Jan-27 09:00	-	-

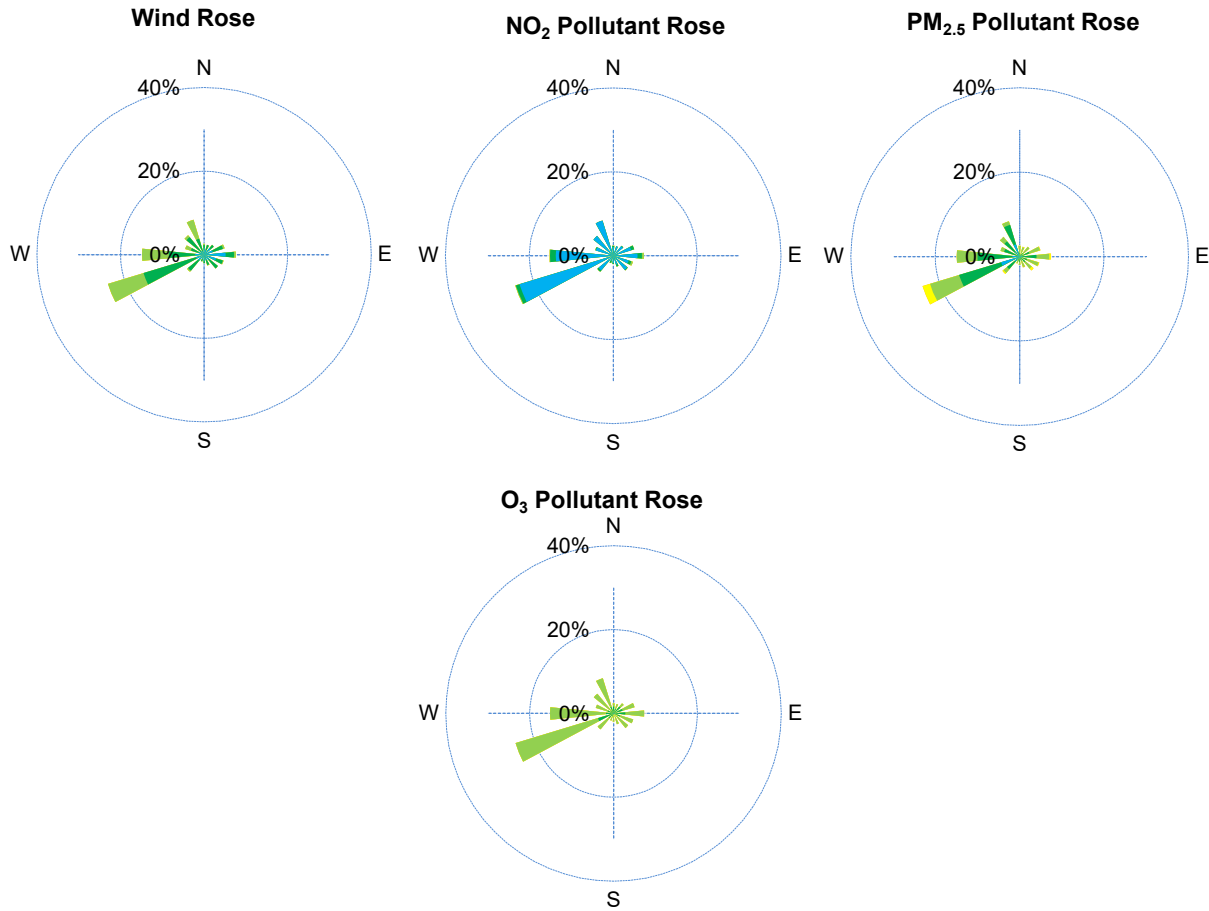
SAAQS: Saskatchewan Ambient Air Quality Standards



## Monthly Update

- \*All data has been slope, intercept, and baseline corrected. Data may change after validation process.
- \*All compliance parameters were within the Saskatchewan Ambient Air Quality Standards.
- \*All compliance parameters were above 90% operational.
- \*45 hours of data for the whole station is flagged as "analyzer failure" due to a logger issue.

# SESAA Esterhazy Station - January 2024 Summary Report

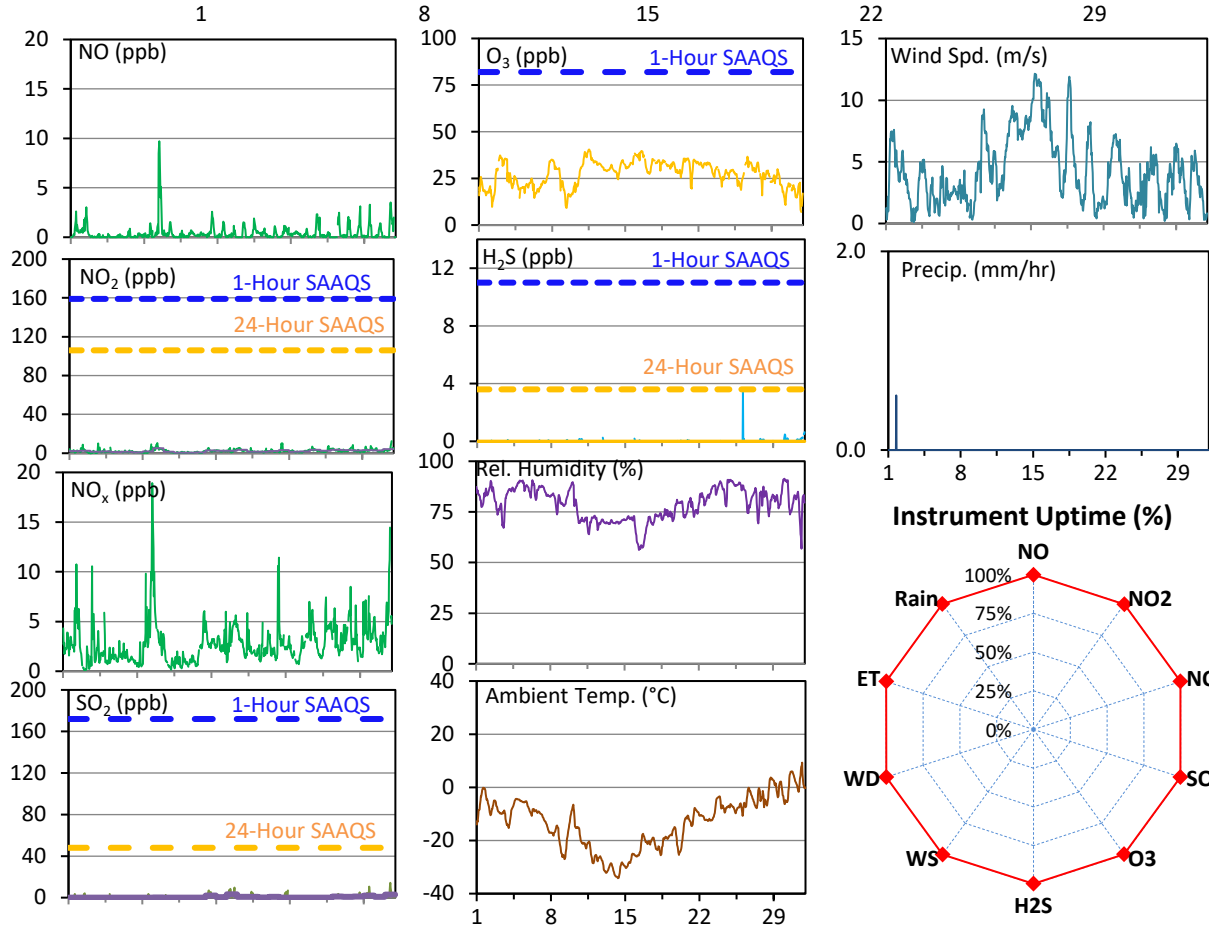
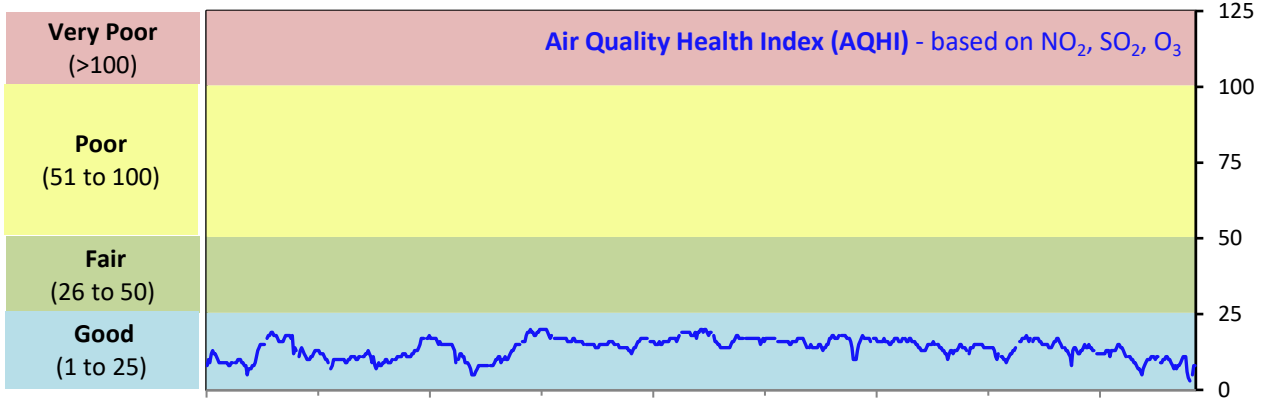


Parameters	Unit	Color Code for Wind Spd & Pollutant Conc. Class					
Wind Speed	m/s	$0.3 \leq WS < 1.4$	$1.4 \leq WS < 3.1$	$3.1 \leq WS < 7.8$	$7.8 \leq WS < 10.8$	$10.8 \leq WS < 13.6$	$WS \geq 13.6$
NO <sub>2</sub>	ppb	$0 \leq C < 5$	$5 \leq C < 15$	$15 \leq C < 30$	$30 \leq C < 100$	$100 \leq C < 212$	$C \geq 212$
PM <sub>2.5</sub>	ug/m <sup>3</sup>	$0 \leq C < 2$	$2 \leq C < 4$	$4 \leq C < 10$	$10 \leq C < 20$	$20 \leq C < 30$	$C \geq 30$
O <sub>3</sub>	ppb	$0 \leq C < 10$	$10 \leq C < 20$	$20 \leq C < 40$	$40 \leq C < 60$	$60 \leq C < 82$	$C \geq 82$

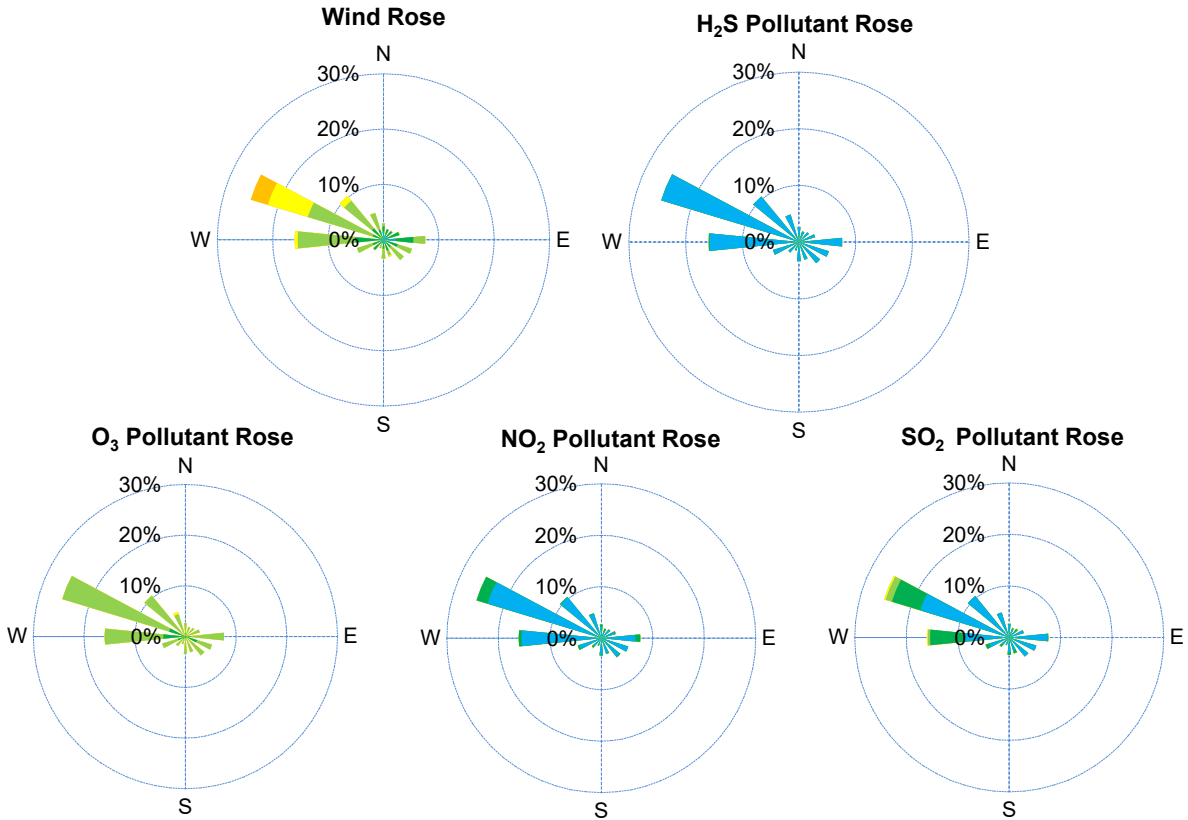
# SESAA Glen Ewen Station - January 2024 Summary Report

Pollutants		Month Records		24-Hour Records				1-Hour Records			
Name	Conc. Unit	Avg. Conc.	Uptime	Maximum		SAAQS Standard	Exceed Days	Maximum		SAAQS Standard	Exceed Hours
				Conc.	Time			Conc.	Time		
NO	ppb	0.4	99.9%	2.4	Jan-9	-	-	9.7	Jan-09 10:00	-	-
NO <sub>2</sub>	ppb	2.4	99.9%	5.1	Jan-9	106	0	12.5	Jan-31 19:00	159	0
NO <sub>x</sub>	ppb	2.8	99.9%	7.5	Jan-9	-	-	18.9	Jan-09 09:00	-	-
SO <sub>2</sub>	ppb	0.7	99.7%	3.2	Jan-16	48	0	14.3	Jan-31 12:00	172	0
O <sub>3</sub>	ppb	27.5	99.7%	37.5	Jan-11	-	-	40.5	Jan-11 12:00	82	0
H <sub>2</sub> S	ppb	< 0.1	99.7%	< 0.1	-	3.6	0	3.4	Jan-26 03:00	11	0

SAAQS: Saskatchewan Ambient Air Quality Standards



# SESAA Glen Ewen Station - January 2024 Summary Report



Parameters	Unit	Color Code for Wind Spd & Pollutant Conc. Class						
Wind Speed	m/s	0.3 ≤ WS < 1.4	1.4 ≤ WS < 3.1	3.1 ≤ WS < 7.8	7.8 ≤ WS < 10.8	10.8 ≤ WS < 13.6	WS ≥ 13.6	
SO <sub>2</sub>	ppb	0 ≤ C < 1	1 ≤ C < 5	5 ≤ C < 10	10 ≤ C < 57	57 ≤ C < 172	C ≥ 172	
NO <sub>2</sub>	ppb	0 ≤ C < 5	5 ≤ C < 15	15 ≤ C < 30	30 ≤ C < 100	100 ≤ C < 212	C ≥ 212	
O <sub>3</sub>	ppb	0 ≤ C < 10	10 ≤ C < 20	20 ≤ C < 40	40 ≤ C < 60	60 ≤ C < 82	C ≥ 82	
H <sub>2</sub> S	ppb	0 ≤ C < 1	1 ≤ C < 3.6	3.6 ≤ C < 5	5 ≤ C < 8	8 ≤ C < 10.8	C ≥ 10.8	

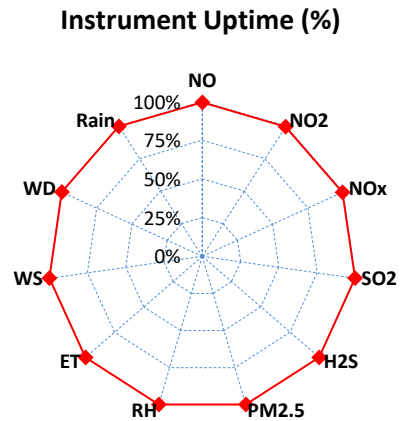
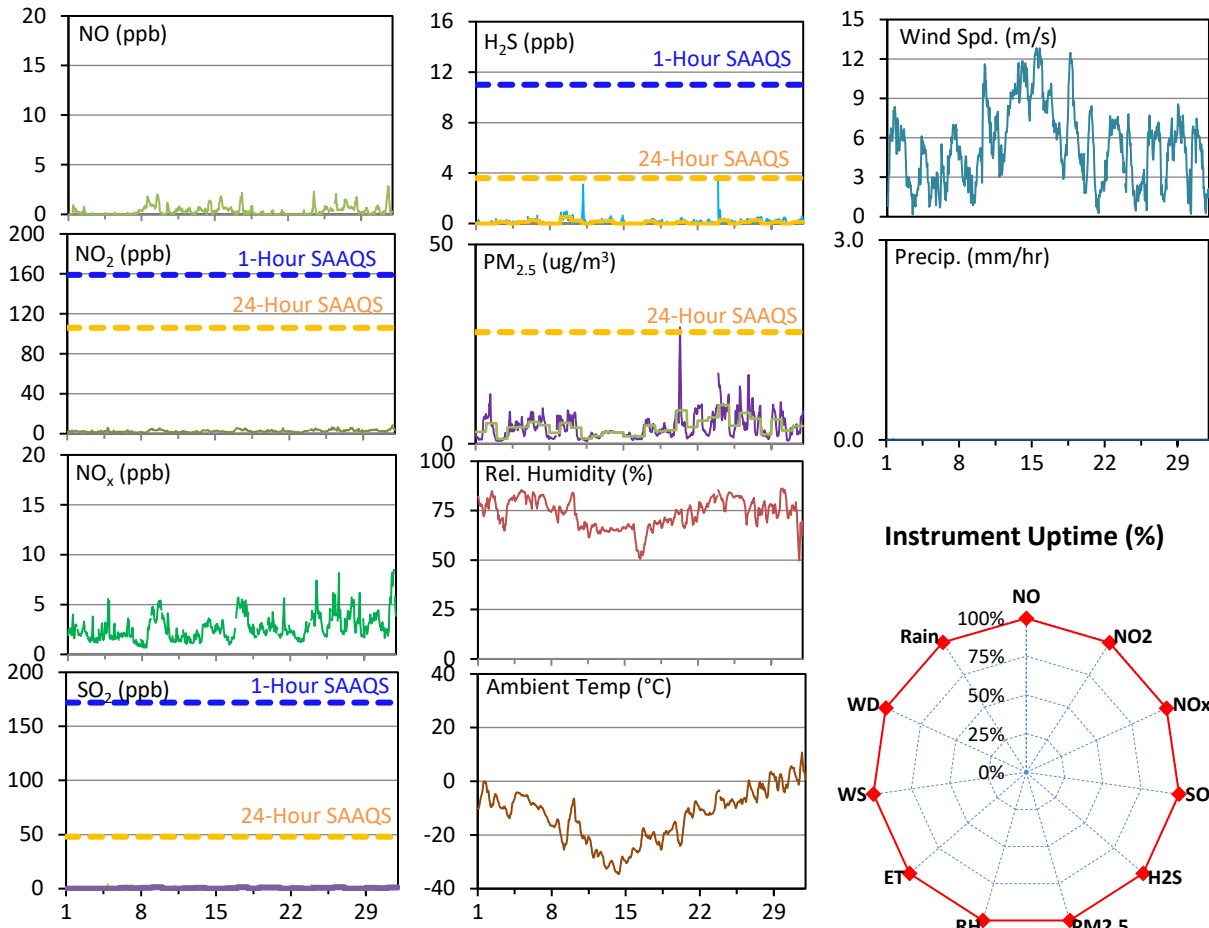
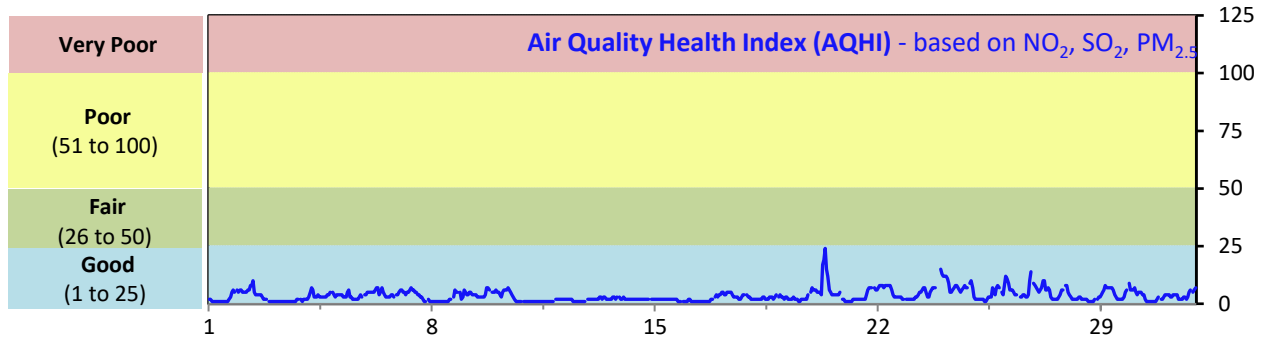
## Monthly Update

- \*All data has been slope, intercept, and baseline corrected. Data may change after validation process.
- \*All compliance parameters were within the Saskatchewan Ambient Air Quality Standards.
- \*All compliance parameters were more than 90% operational.
- \*1-2 hours of data was flagged as "power failure" for all compliance parameters due to a power issue on January 26.
- \*1 hour of data was flagged as "analyzer failure" for WD and WS due to flatlined data on January 25.

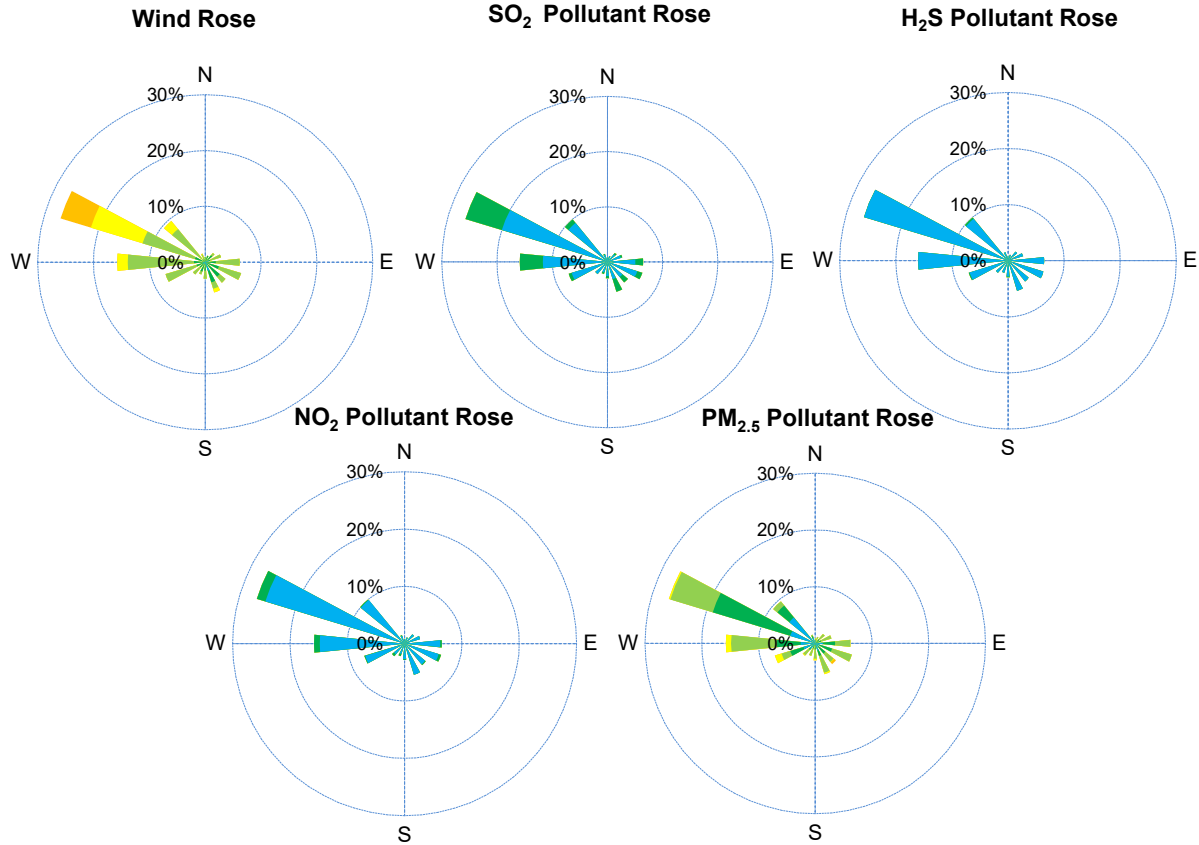
# SESAA Oxbow Station - January 2024 Summary Report

Pollutants		Month Records		24-Hour Records				1-Hour Records			
Name	Conc. Unit	Avg. Conc.	Uptime	Maximum		SAAQS Standard	Exceed Days	Maximum		SAAQS Standard	Exceed Hours
				Conc.	Time			Conc.	Time		
NO	ppb	0.4	99.5%	0.9	Jan-8	-	-	2.8	Jan-31 13:00	-	-
NO <sub>2</sub>	ppb	2.6	99.5%	4.5	Jan-17	106	0	8.5	Jan-31 19:00	159	0
NO <sub>x</sub>	ppb	2.7	99.5%	4.8	Jan-31	-	-	8.5	Jan-31 19:00	-	-
SO <sub>2</sub>	ppb	0.6	99.7%	1.3	Jan-9	48	0	4.3	Jan-04 21:00	172	0
H <sub>2</sub> S	ppb	0.1	99.9%	0.5	Jan-9	3.6	0	3.3	Jan-23 22:00	11	0
PM <sub>2.5</sub>	ug/m3	4.3	99.9%	9.7	Jan-24	28	0	29.2	Jan-20 08:00	-	-

SAAQS: Saskatchewan Ambient Air Quality Standards



# SESAA Oxbow Station - January 2024 Summary Report



Parameters	Unit	Color Code for Wind Spd & Pollutant Conc. Class						
Wind Speed	m/s	0.3 ≤ WS < 1.4	1.4 ≤ WS < 3.1	3.1 ≤ WS < 7.8	7.8 ≤ WS < 10.8	10.8 ≤ WS < 13.6	WS ≥ 13.6	
SO <sub>2</sub>	ppb	0 ≤ C < 1	1 ≤ C < 5	5 ≤ C < 10	10 ≤ C < 57	57 ≤ C < 172	C ≥ 172	
NO <sub>2</sub>	ppb	0 ≤ C < 5	5 ≤ C < 15	15 ≤ C < 30	30 ≤ C < 100	100 ≤ C < 212	C ≥ 212	
H <sub>2</sub> S	ppb	0 ≤ C < 1	1 ≤ C < 3.6	3.6 ≤ C < 5	5 ≤ C < 8	8 ≤ C < 10.8	C ≥ 10.8	
PM <sub>2.5</sub>	ug/m <sup>3</sup>	0 ≤ C < 2	2 ≤ C < 4	4 ≤ C < 10	10 ≤ C < 20	20 ≤ C < 30	C ≥ 30	

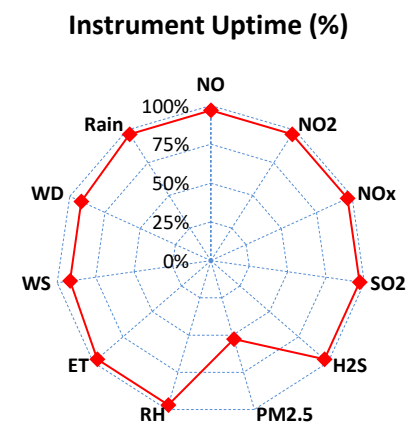
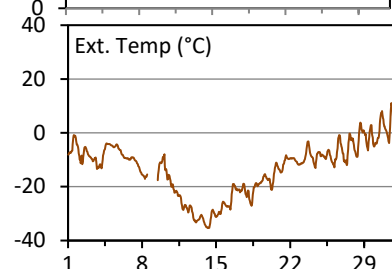
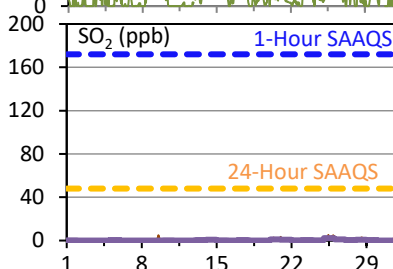
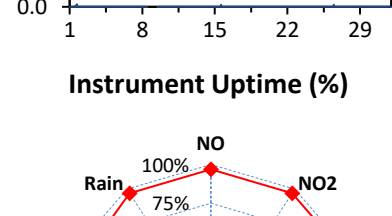
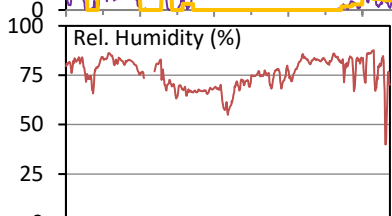
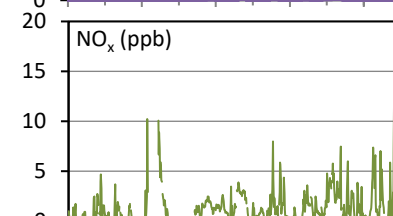
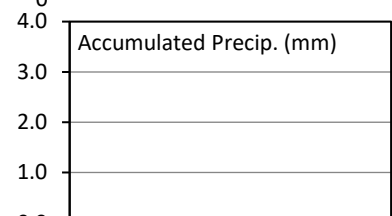
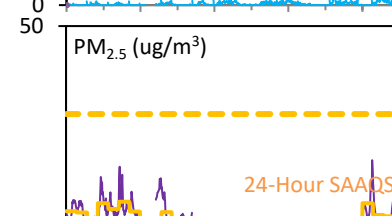
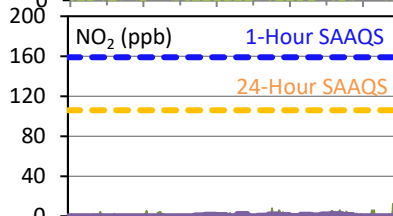
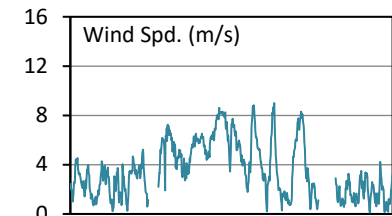
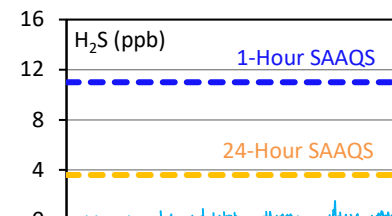
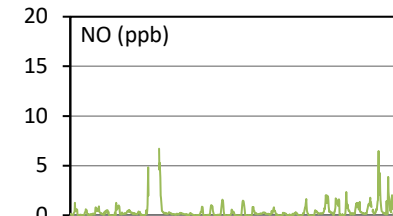
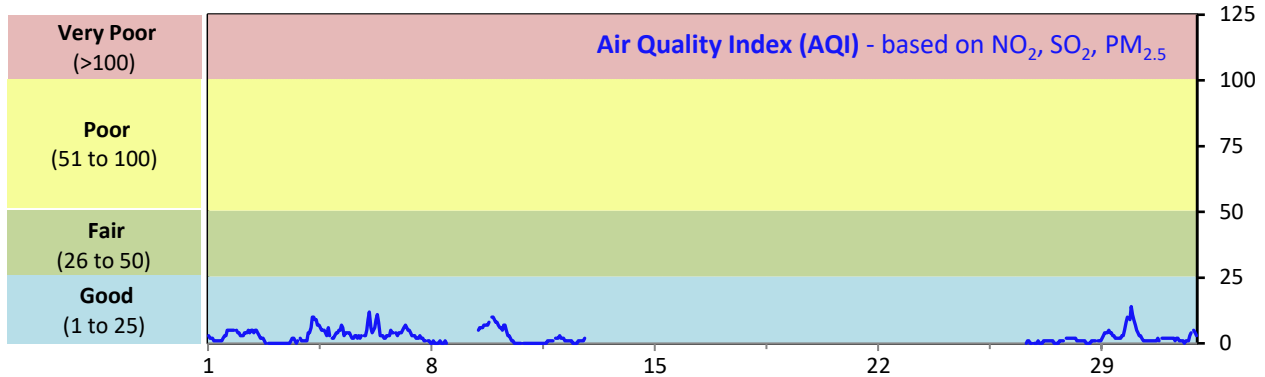
## Monthly Update

- \*All data has been slope, intercept, and baseline corrected. Data may change after validation process.
- \*All compliance parameters were within the Saskatchewan Ambient Air Quality Standards.
- \*All compliance parameters were greater than 90% operational.
- \*1- 4 hours of data flagged as "power failure" for the whole station for intermittent power issues.
- \*Routine quarterly calibration for the PM2.5 analyzer was completed on January 8.

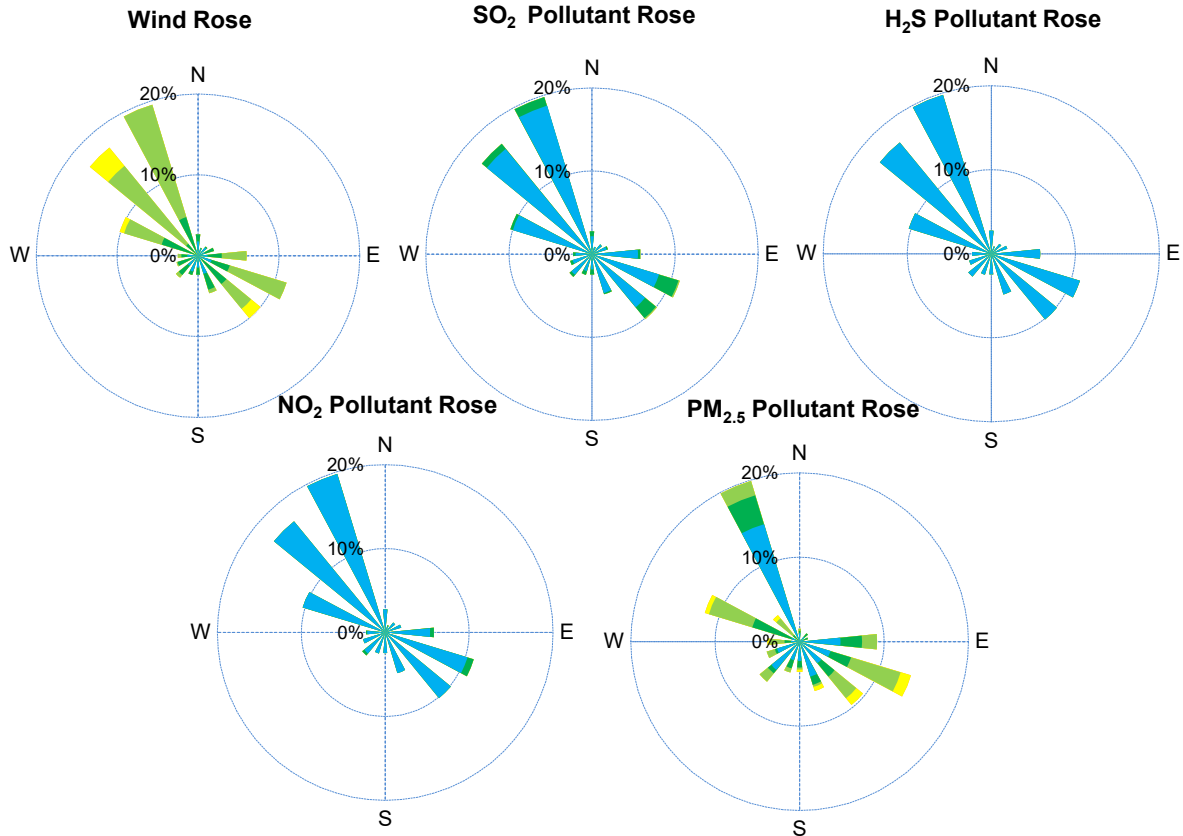
# SESAA Stoughton Station - January 2024 Summary Report

Pollutants		Month Records		24-Hour Records				1-Hour Records			
Name	Conc. Unit	Avg. Conc.	Uptime	Maximum		SAAQS Standard	Exceed Days	Maximum		SAAQS Standard	Exceed Hours
				Conc.	Time			Conc.	Time		
NO	ppb	0.4	96.9%	1.2	Jan-30	-	-	6.7	Jan-09 11:00	-	-
NO <sub>2</sub>	ppb	0.9	96.9%	2.2	Jan-17	106	0	12.4	Jan-31 18:00	159	0
NO <sub>x</sub>	ppb	1.3	96.9%	2.8	Jan-26	-	-	14.5	Jan-31 18:00	-	-
SO <sub>2</sub>	ppb	0.5	96.9%	2.2	Jan-25	48	0	8.0	Jan-31 15:00	172	0
H <sub>2</sub> S	ppb	0.1	96.9%	0.3	Jan-26	3.6	0	1.5	Jan-26 09:00	11	0
PM <sub>2.5</sub>	ug/m <sup>3</sup>	3.1	52.7%	6.1	Jan-6	28	0	16.5	Jan-29 22:00	-	-

SAAQS: Saskatchewan Ambient Air Quality Standards



# SESAA Stoughton Station - January 2024 Summary Report



Parameters	Unit	Color Code for Wind Spd & Pollutant Conc. Class						
Wind Speed	m/s	0.3 ≤ WS < 1.4	1.4 ≤ WS < 3.1	3.1 ≤ WS < 7.8	7.8 ≤ WS < 10.8	10.8 ≤ WS < 13.6	WS ≥ 13.6	
SO <sub>2</sub>	ppb	0 ≤ C < 1	1 ≤ C < 5	5 ≤ C < 10	10 ≤ C < 57	57 ≤ C < 172	C ≥ 172	
NO <sub>2</sub>	ppb	0 ≤ C < 5	5 ≤ C < 15	15 ≤ C < 30	30 ≤ C < 100	100 ≤ C < 212	C ≥ 212	
H <sub>2</sub> S	ppb	0 ≤ C < 1	1 ≤ C < 3.6	3.6 ≤ C < 5	5 ≤ C < 8	8 ≤ C < 10.8	C ≥ 10.8	
PM <sub>2.5</sub>	ug/m <sup>3</sup>	0 ≤ C < 2	2 ≤ C < 4	4 ≤ C < 10	10 ≤ C < 20	20 ≤ C < 30	C ≥ 30	

## Monthly Update

\*All data has been slope, intercept, and baseline corrected. Data may change after validation process.

\*All compliance parameters were within the Saskatchewan Ambient Air Quality Standards.

\*All compliance parameters were above 90% operational except PM<sub>2.5</sub>.

\*23 hours of data flagged as "analyzer failure" for the whole station due to flatlined data and unusual spikes on January 8.

\*39 hours of data flagged as "analyzer failure" for Windspeed and Wind direction due to flatlined data.

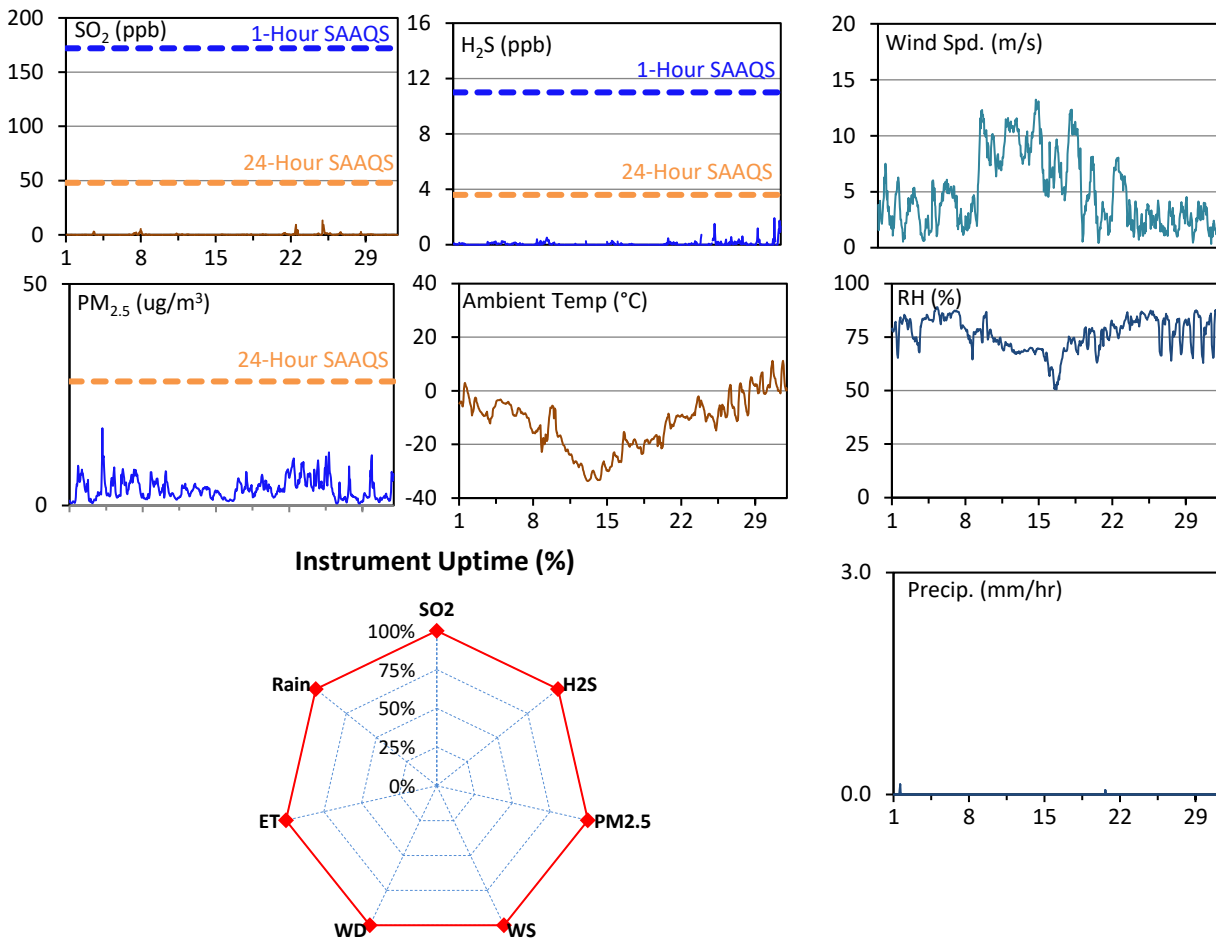
\*329 hours of data flagged as "analyzer failure" for PM<sub>2.5</sub> due to unusual spikes and plateaus from January 12 - 26.



# SESAA Torquay Station - January 2024 Summary Report

Pollutants		Month Records		24-Hour Records				1-Hour Records			
Name	Conc. Unit	Avg. Conc.	Uptime	Maximum		SAAQS Standard	Exceed Days	Maximum		SAAQS Standard	Exceed Hours
				Conc.	Time			Conc.	Time		
SO <sub>2</sub>	ppb	0.3	100.0%	1.6	Jan-25	48	0	13.3	Jan-24 23:00	172	0
H <sub>2</sub> S	ppb	0.1	100.0%	0.2	Jan-9	3.6	0	1.9	Jan-31 09:00	11	0
PM <sub>2.5</sub>	ug/m3	3.8	100.0%	6.9	Jan-23	28	0	17.4	Jan-04 03:00	-	-

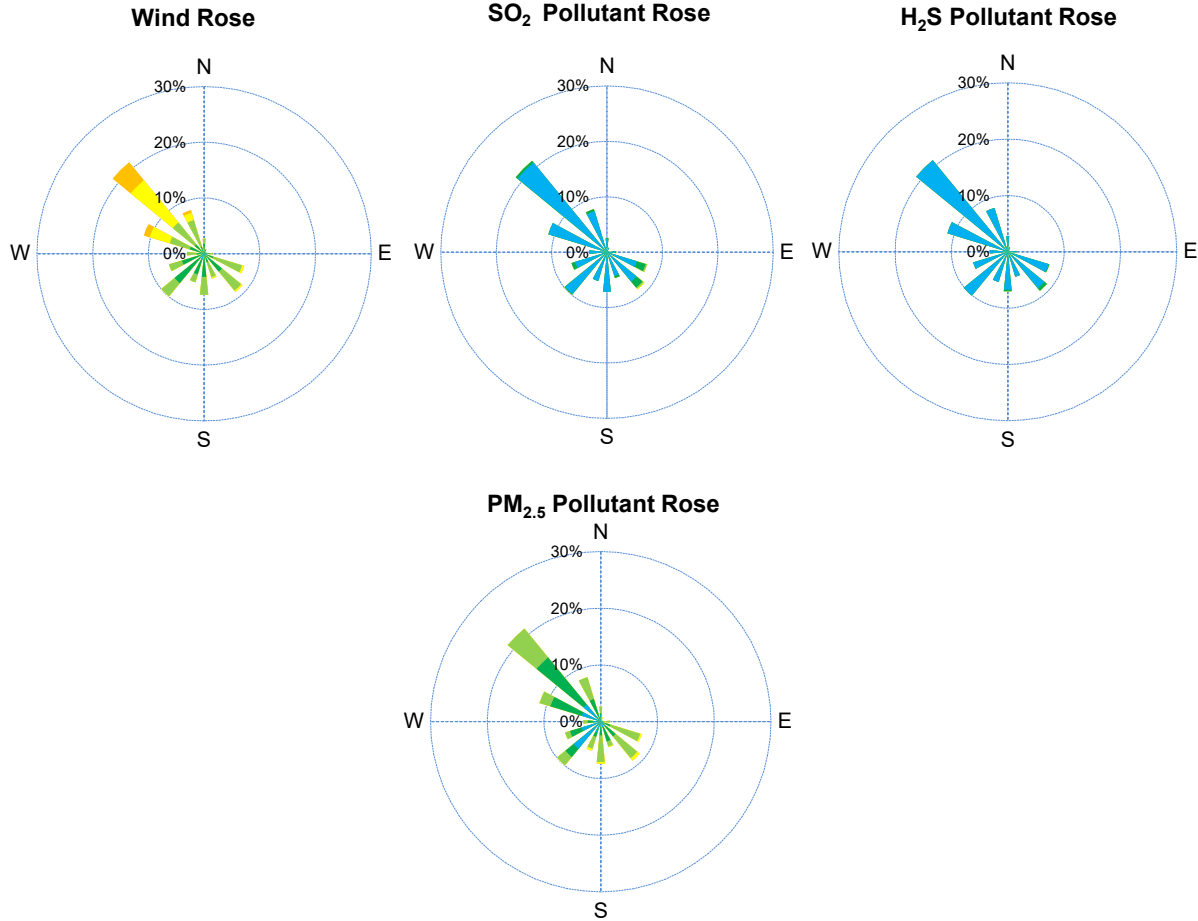
SAAQS: Saskatchewan Ambient Air Quality Standards



## Monthly Update

- \*All data has been slope, intercept, and baseline corrected. Data may change after validation process.
- \*All compliance parameters were within the Saskatchewan Ambient Air Quality Standards.
- \*All compliance parameters had greater than 90% operational uptime.

# SESAA Torquay Station - January 2024 Summary Report

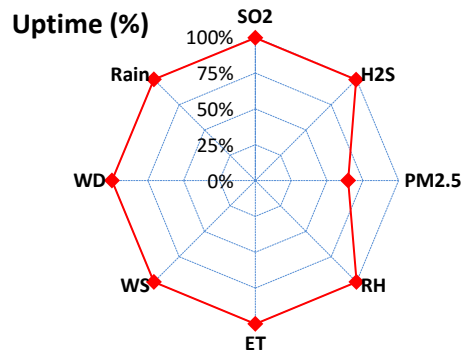
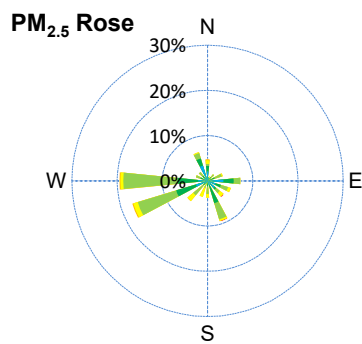
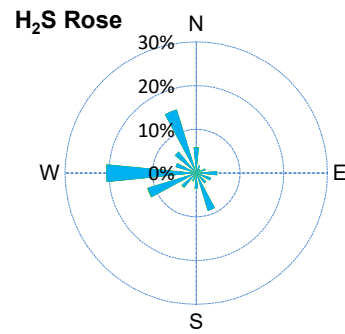
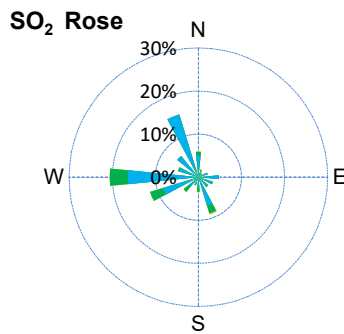
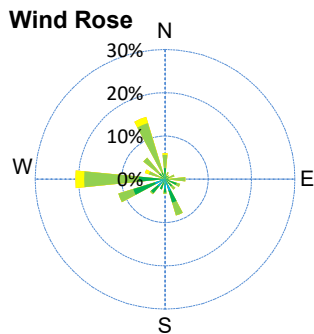
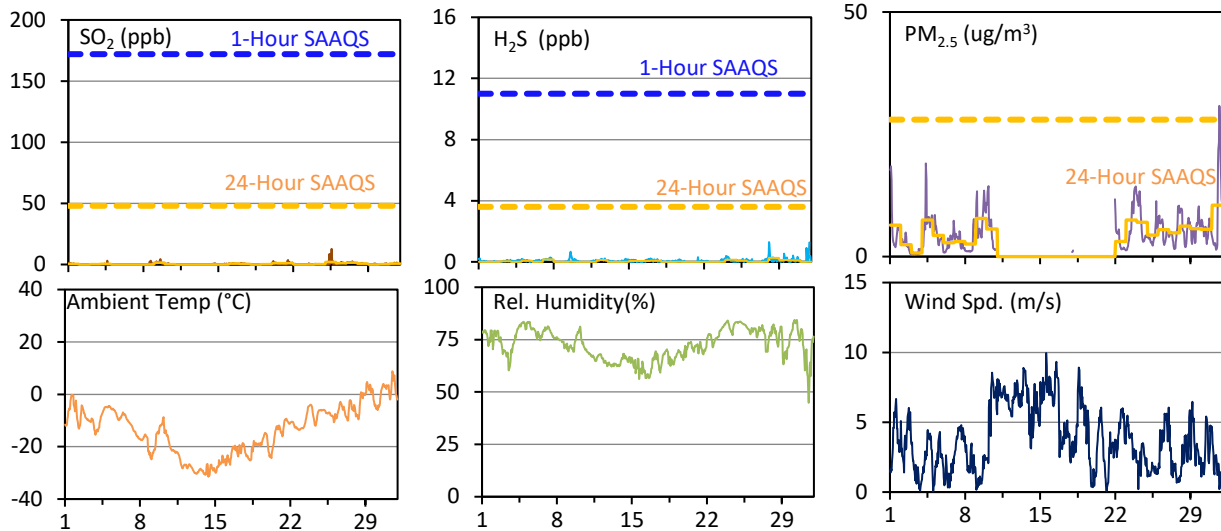


Parameters	Unit	Color Code for Wind Spd & Pollutant Conc. Class					
Wind Speed	m/s	$0.3 \leq WS < 1.4$	$1.4 \leq WS < 3.1$	$3.1 \leq WS < 7.8$	$7.8 \leq WS < 10.8$	$10.8 \leq WS < 13.6$	$WS \geq 13.6$
SO <sub>2</sub>	ppb	$0 \leq C < 1$	$1 \leq C < 5$	$5 \leq C < 10$	$10 \leq C < 57$	$57 \leq C < 172$	$C \geq 172$
NO <sub>2</sub>	ppb	$0 \leq C < 5$	$5 \leq C < 15$	$15 \leq C < 30$	$30 \leq C < 100$	$100 \leq C < 212$	$C \geq 212$
O <sub>3</sub>	ppb	$0 \leq C < 10$	$10 \leq C < 20$	$20 \leq C < 40$	$40 \leq C < 60$	$60 \leq C < 82$	$C \geq 82$
H <sub>2</sub> S	ppb	$0 \leq C < 1$	$1 \leq C < 3.6$	$3.6 \leq C < 5$	$5 \leq C < 8$	$8 \leq C < 10.8$	$C \geq 10.8$
PM <sub>2.5</sub>	ug/m <sup>3</sup>	$0 \leq C < 2$	$2 \leq C < 4$	$4 \leq C < 10$	$10 \leq C < 20$	$20 \leq C < 30$	$C \geq 30$

# SESAA Wauchope Station - January 2024 Summary Report

Pollutants		Month Records		24-Hour Records				1-Hour Records			
Name	Conc. Unit	Avg. Conc.	Uptime	Maximum		SAAQS Objective	Exceed Days	Maximum		SAAQS Objective	Exceed Hours
				Conc.	Time			Conc.	Time		
SO <sub>2</sub>	ppb	0.5	99.6%	2.1	Jan-25	48	0	12.8	Jan-25 14:00	172	0
H <sub>2</sub> S	ppb	0.1	99.6%	0.3	Jan-28	3.6	0	1.3	Jan-28 01:00	11	0
PM <sub>2.5</sub>	ug/m3	5.2	64.9%	10.5	Jan-31	28	0	30.8	Jan-31 16:00	-	-

SAAQS: Saskatchewan Ambient Air Quality Standards



## SESAA Wauchope Station - January 2024 Summary Report

Parameters	Unit	Color Code for Wind Spd & Pollutant Conc. Class					
Wind Speed	m/s	0.3 ≤ WS < 1.4	1.4 ≤ WS < 3.1	3.1 ≤ WS < 7.8	7.8 ≤ WS < 10.8	10.8 ≤ WS < 13.6	WS ≥ 13.6
SO <sub>2</sub>	ppb	0 ≤ C < 1	1 ≤ C < 5	5 ≤ C < 10	10 ≤ C < 57	57 ≤ C < 172	C ≥ 172
H <sub>2</sub> S	ppb	0 ≤ C < 1	1 ≤ C < 3.6	3.6 ≤ C < 5	5 ≤ C < 8	8 ≤ C < 10.8	C ≥ 10.8
PM <sub>2.5</sub>	ug/m <sup>3</sup>	0 ≤ C < 2	2 ≤ C < 4	4 ≤ C < 10	10 ≤ C < 20	20 ≤ C < 30	C ≥ 30

### Monthly Update

- \*All data has been slope, intercept, and baseline corrected. Data may change after validation process.
- \*All compliance parameters were within the Saskatchewan Ambient Air Quality Standards.
- \*All compliance parameters were greater than 90% operational, except PM2.5.
- \*261 hours of data for PM2.5 was flagged as "analyzer failure" due to analyzer flatlining.
- \*3 hours of data for H2S and SO2 was flagged as "analyzer failure" due to large spike on January 8.
- \*Routine quarterly calibrations are rescheduled for February, 2024 due to cold weather in January.

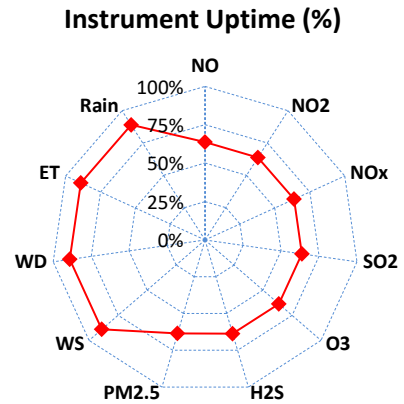
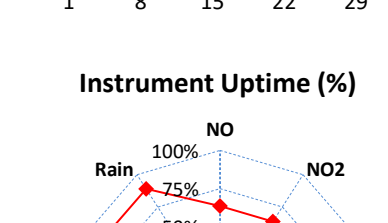
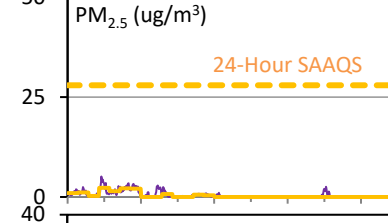
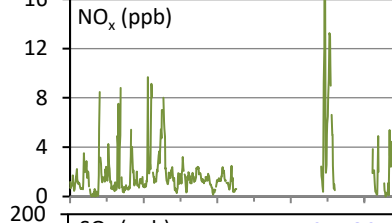
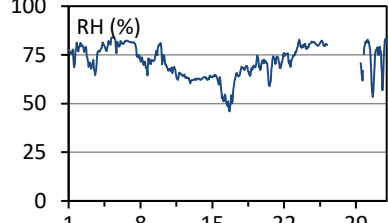
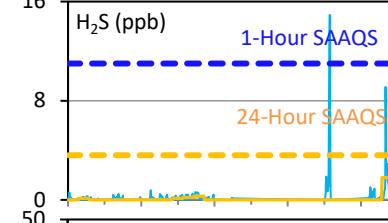
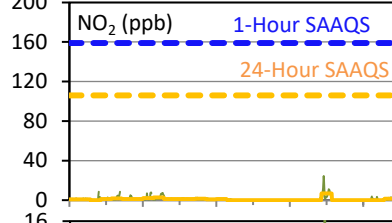
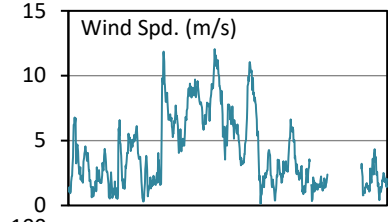
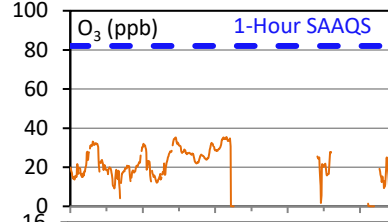
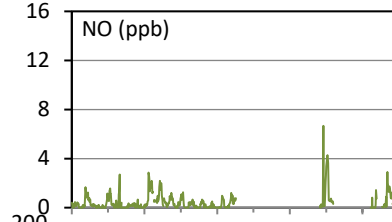
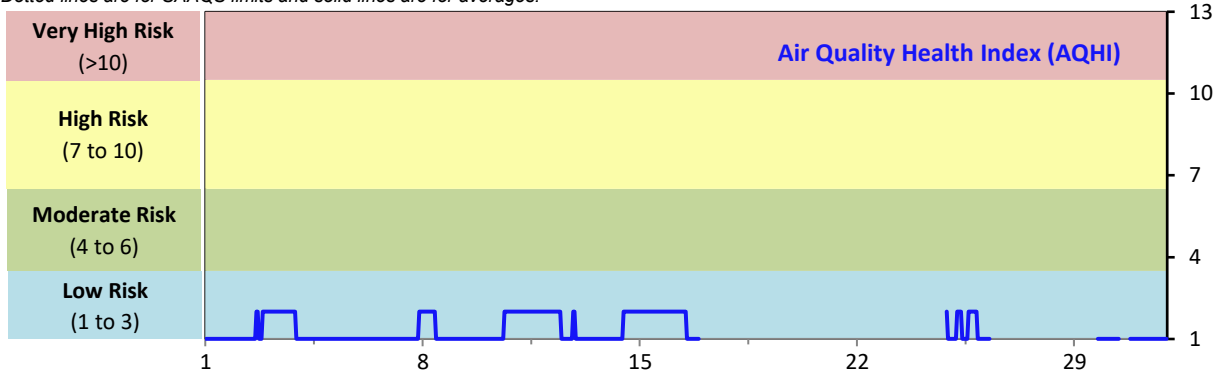
# SESAA Weyburn Station - January 2024 Summary Report

Pollutants		Month Records		24-Hour Records				1-Hour Records			
Name	Conc. Unit	Avg. Conc.	Uptime	Maximum		SAAQS Standard	Exceed Days	Maximum		SAAQS Standard	Exceed Hours
				Conc.	Time			Conc.	Time		
NO	ppb	0.5	63.7%	1.7	Jan-25	-	-	6.7	Jan-25 05:00	-	-
NO <sub>2</sub>	ppb	1.6	63.7%	6.8	Jan-25	106	0	24.5	Jan-25 05:00	159	0
NO <sub>x</sub>	ppb	2.1	63.7%	8.5	Jan-25	-	-	31.1	Jan-25 05:00	-	-
SO <sub>2</sub>	ppb	1.2	63.7%	2.5	Jan-9	48	0	48.8	Jan-25 05:00	172	0
O <sub>3</sub>	ppb	21.4	63.7%	31.4	Jan-11	-	-	35.4	Jan-16 02:00	82	0
H <sub>2</sub> S	ppb	0.3	63.7%	1.8	Jan-31	3.6	0	14.9	Jan-26 00:00	11	2
PM <sub>2.5</sub>	ug/m3	0.8	63.6%	2.3	Jan-4	28	0	5.1	Jan-04 05:00	-	-

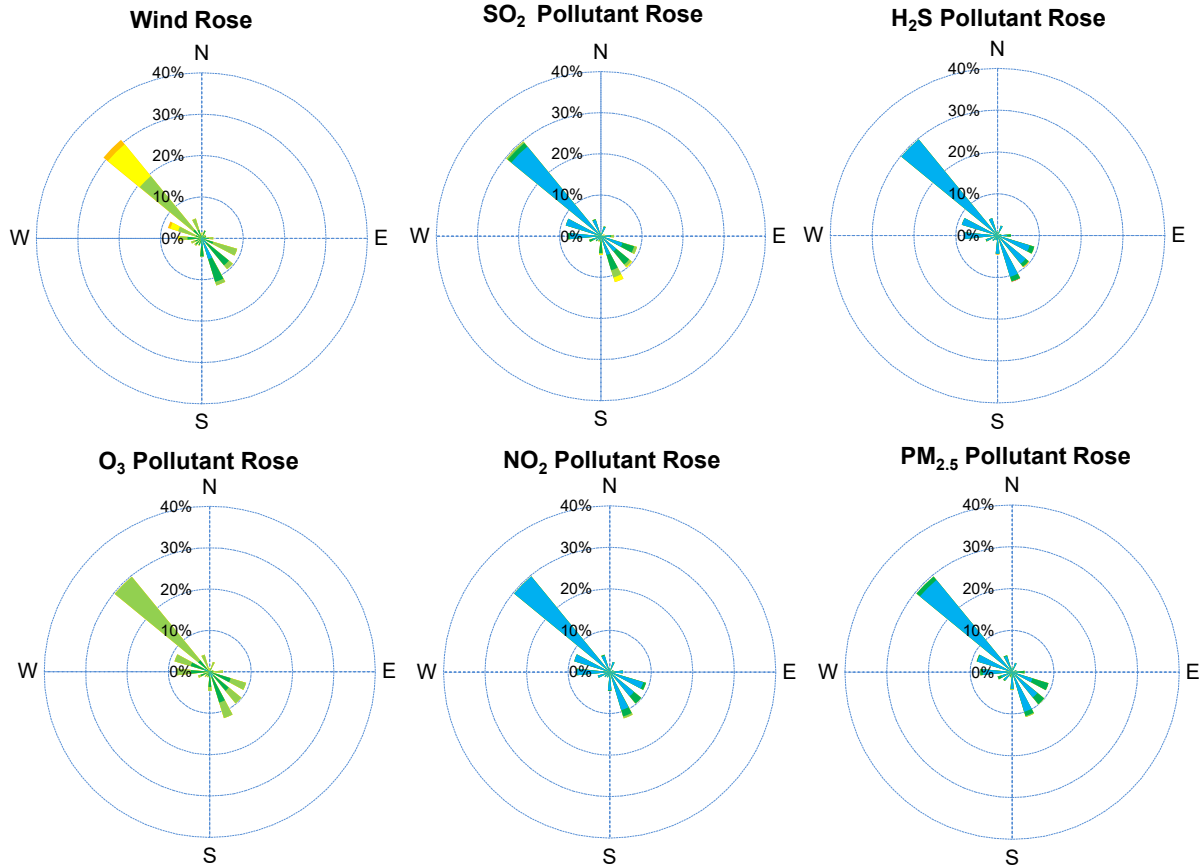
SAAQS: Saskatchewan Ambient Air Quality Standards

\* Air Quality Standard refers to Saskatchewan Ambient Air Quality Standards (SAAQS).

\* Dotted lines are for SAAQS limits and solid lines are for averages.



# SESAA Weyburn Station - January 2024 Summary Report



Parameters	Unit	Color Code for Wind Spd & Pollutant Conc. Class						
Wind Speed	m/s	$0.3 \leq WS < 1.4$	$1.4 \leq WS < 3.1$	$3.1 \leq WS < 7.8$	$7.8 \leq WS < 10.8$	$10.8 \leq WS < 13.6$	$WS \geq 13.6$	
SO <sub>2</sub>	ppb	$0 \leq C < 1$	$1 \leq C < 5$	$5 \leq C < 10$	$10 \leq C < 57$	$57 \leq C < 172$	$C \geq 172$	
NO <sub>2</sub>	ppb	$0 \leq C < 5$	$5 \leq C < 15$	$15 \leq C < 30$	$30 \leq C < 100$	$100 \leq C < 212$	$C \geq 212$	
O <sub>3</sub>	ppb	$0 \leq C < 10$	$10 \leq C < 20$	$20 \leq C < 40$	$40 \leq C < 60$	$60 \leq C < 82$	$C \geq 82$	
H <sub>2</sub> S	ppb	$0 \leq C < 1$	$1 \leq C < 3.6$	$3.6 \leq C < 5$	$5 \leq C < 8$	$8 \leq C < 10.8$	$C \geq 10.8$	
PM <sub>2.5</sub>	ug/m <sup>3</sup>	$0 \leq C < 2$	$2 \leq C < 4$	$4 \leq C < 10$	$10 \leq C < 20$	$20 \leq C < 30$	$C \geq 30$	

## Monthly Update

\*All data has been slope, intercept, and baseline corrected. Data may change after validation process.

\*All compliance parameters were within the Saskatchewan Ambient Air Quality Standards with the exception of two 1-hour H2S exceedances.

\*All compliance parameters were below 90% operational.

\*270 hours of data for all compliance parameters and 80 hours of data for all meteorological parameters are flagged as "analyzer failure" as the station experienced extreme cold temperatures resulting in issues with data (large spikes and flatlines) from January 16 to 24 and January 26 to 29.

\*Calibration occurred on January 29 to resolve station issues which failed resulting in a second calibration which occurred on January 30.

## Exceedance Summary

1-hour Exceedance Information			Summary of Other Parameters During Exceedance								
Pollutant	Conc. ppb	Exceedance Time mmm-dd hh:mm	WS m/s	WD deg	AQHI -	Rain mm	SO2 ppb	NO2 ppb	O3 ppb	H2S ppb	PM2.5 ug/m3
H2S	13.3	Jan-25 23:00	1.4	148	1	0.0	3	4	17	13.3	1.0
H2S	14.9	Jan-26 00:00	1.4	198	1	0.0	5.3	1.9	20	14.9	0