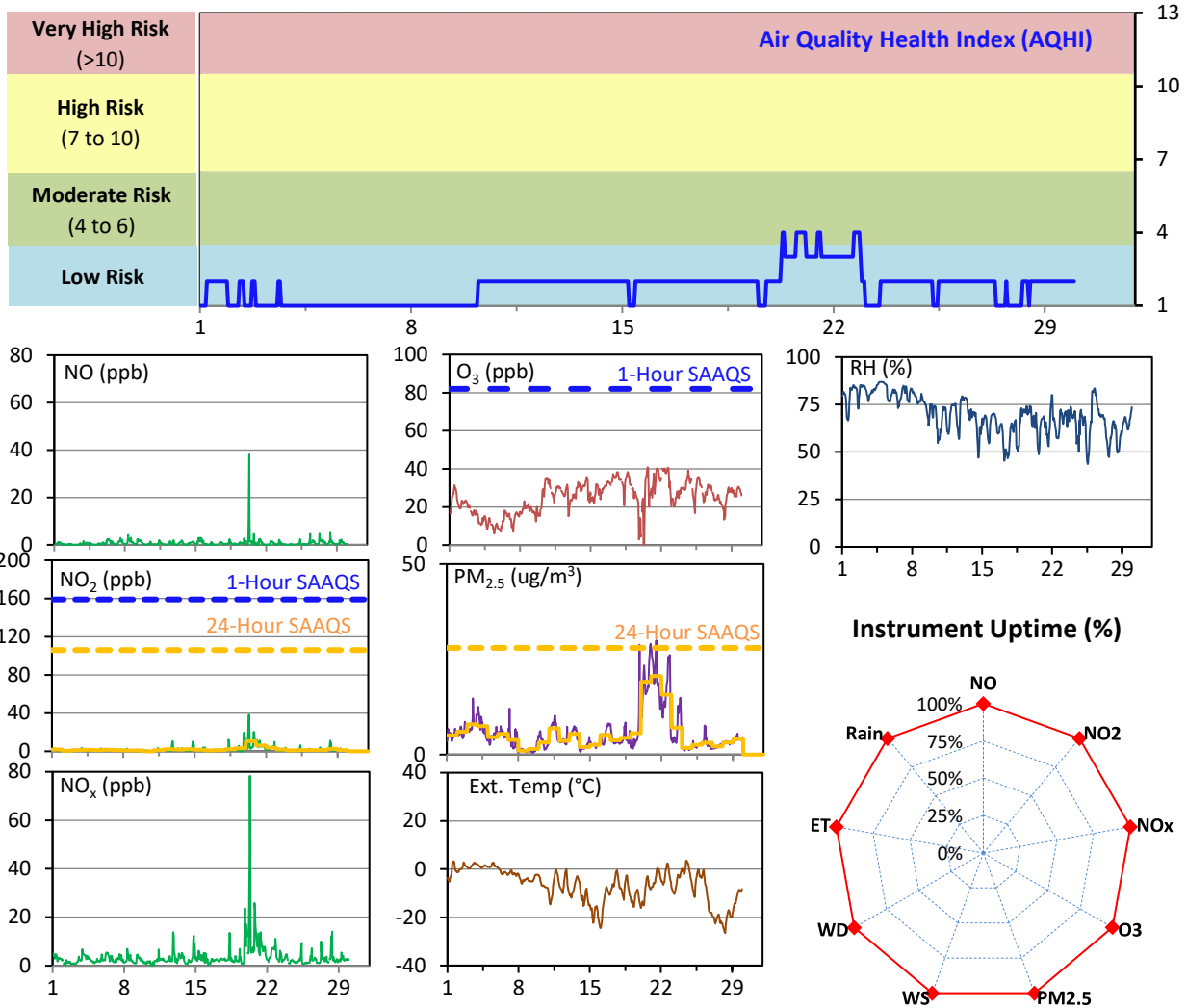


SESAA Esterhazy Station - February 2024 Summary Report

Pollutants		Month Records		24-Hour Records				1-Hour Records			
Name	Conc. Unit	Avg. Conc.	Uptime	Maximum		SAAQS Standard	Exceed Days	Maximum		SAAQS Standard	Exceed Hours
				Conc.	Time			Conc.	Time		
NO	ppb	0.8	100.0%	3.5	Feb-20	-	-	38.1	Feb-20 07:00	-	-
NO ₂	ppb	2.0	100.0%	10.5	Feb-20	106	0	38.4	Feb-20 07:00	159	0
NO _x	ppb	3.4	100.0%	15.4	Feb-20	-	-	78.3	Feb-20 07:00	-	-
O ₃	ppb	25.1	99.9%	36.9	Feb-22	-	-	40.9	Feb-20 15:00	82	0
PM _{2.5}	ug/m3	5.7	100.0%	20.6	Feb-21	28	0	30.0	Feb-21 11:00	-	-

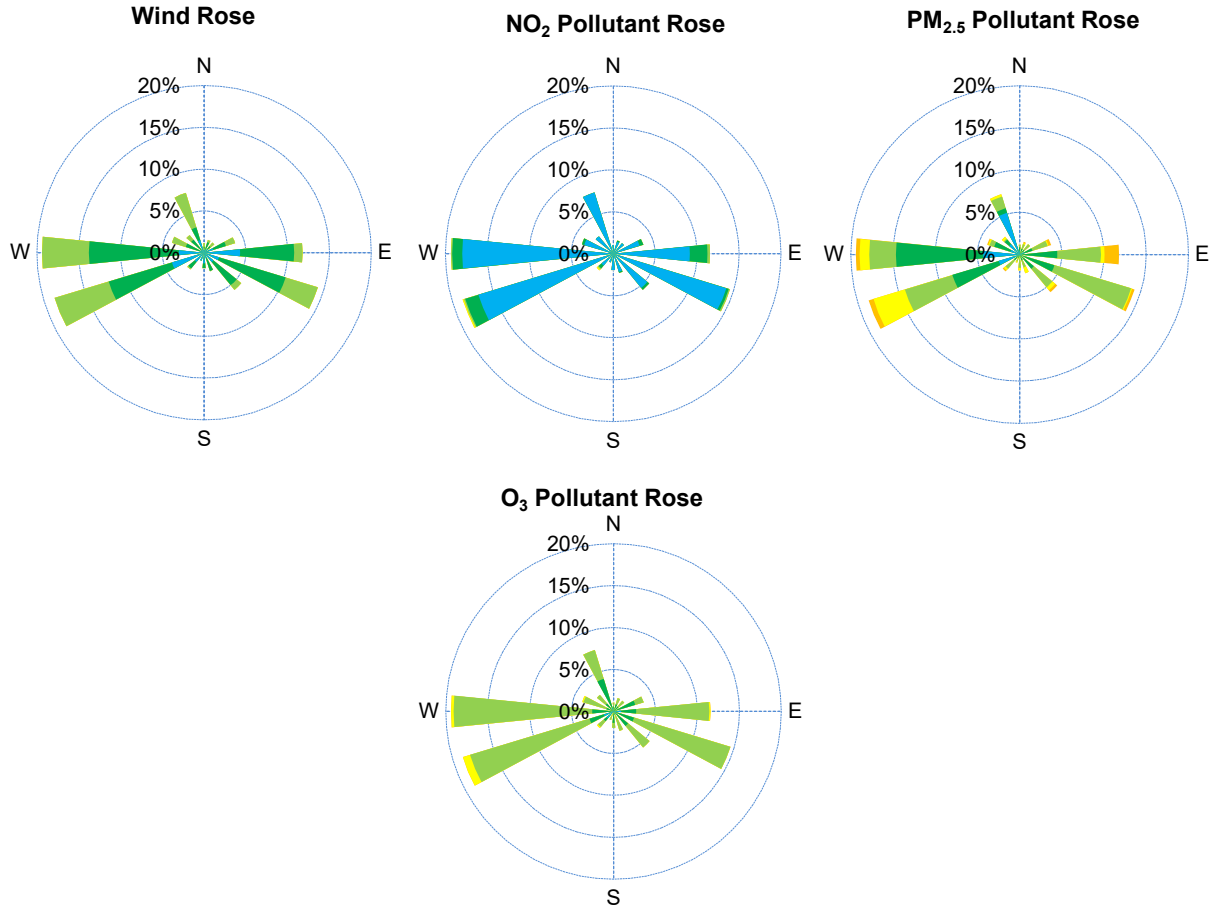
SAAQS: Saskatchewan Ambient Air Quality Standards



Monthly Update

- *All data has been slope, intercept, and baseline corrected. Data may change after validation process.
- *All compliance parameters were within the Saskatchewan Ambient Air Quality Standards.
- *All compliance parameters were above 90% operational.
- *1 hour of data for O₃ was flagged as "analyzer failure" due to flatlined data.
- *Routine quarterly calibration was postponed to March due to extreme weather conditions.

SESAA Esterhazy Station - February 2024 Summary Report

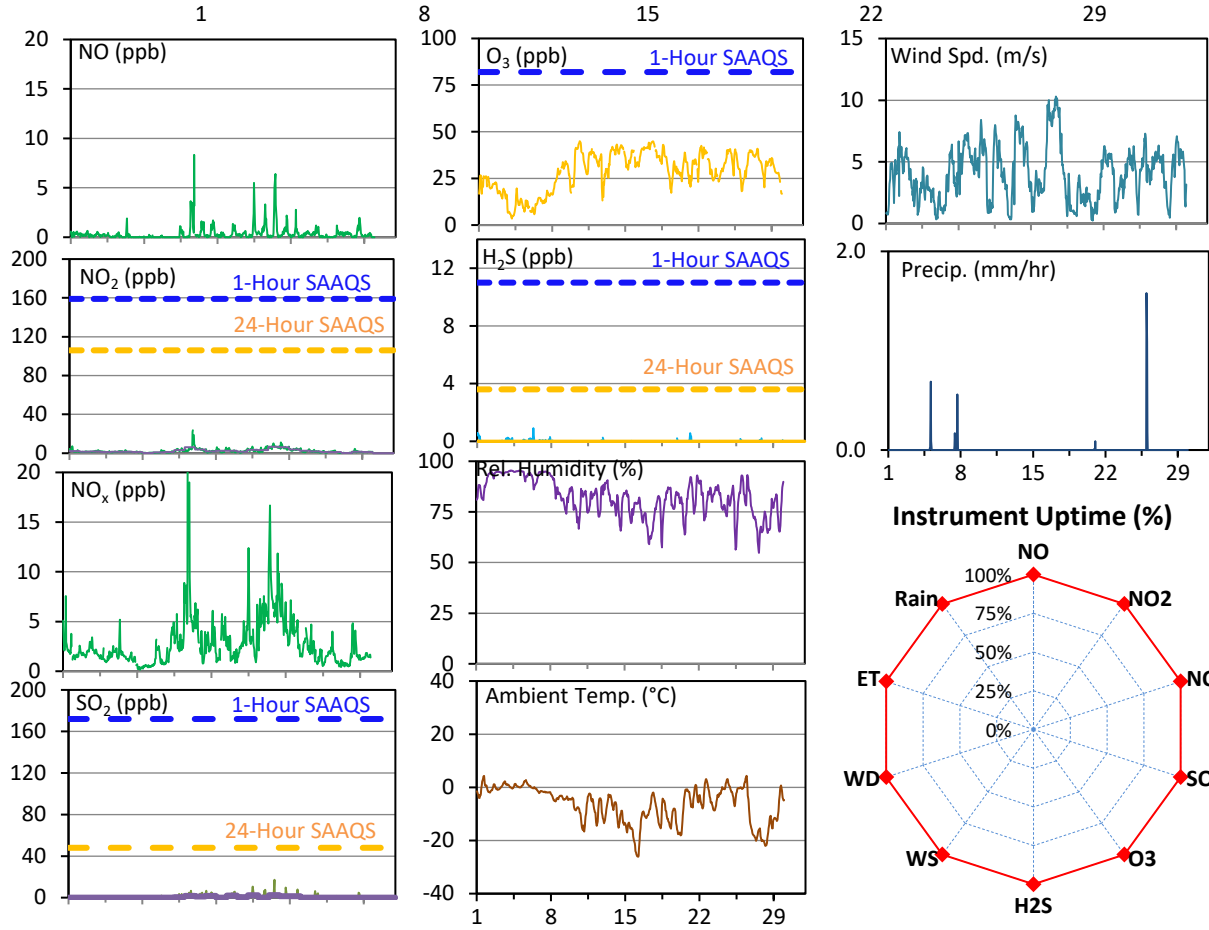
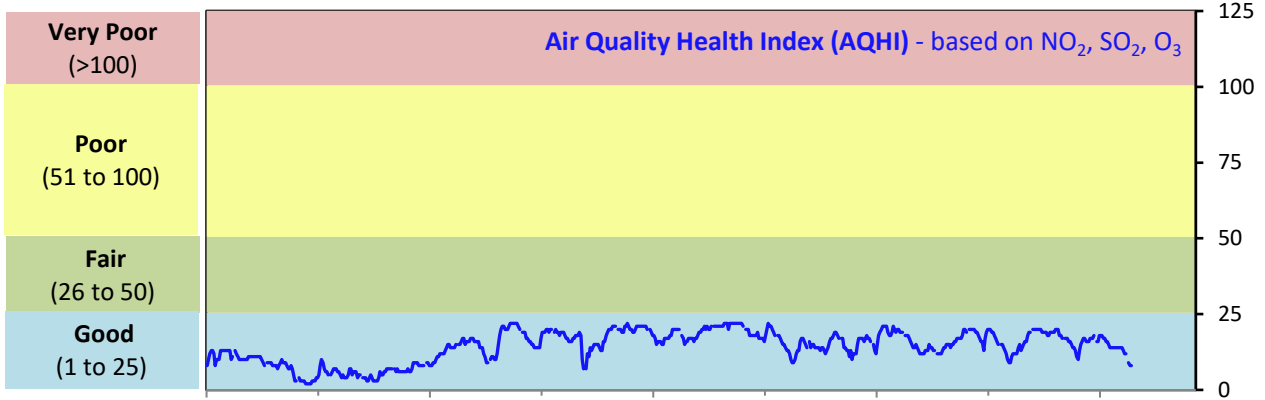


Parameters	Unit	Color Code for Wind Spd & Pollutant Conc. Class					
Wind Speed	m/s	$0.3 \leq WS < 1.4$	$1.4 \leq WS < 3.1$	$3.1 \leq WS < 7.8$	$7.8 \leq WS < 10.8$	$10.8 \leq WS < 13.6$	$WS \geq 13.6$
NO ₂	ppb	$0 \leq C < 5$	$5 \leq C < 15$	$15 \leq C < 30$	$30 \leq C < 100$	$100 \leq C < 212$	$C \geq 212$
PM _{2.5}	ug/m ³	$0 \leq C < 2$	$2 \leq C < 4$	$4 \leq C < 10$	$10 \leq C < 20$	$20 \leq C < 30$	$C \geq 30$
O ₃	ppb	$0 \leq C < 10$	$10 \leq C < 20$	$20 \leq C < 40$	$40 \leq C < 60$	$60 \leq C < 82$	$C \geq 82$

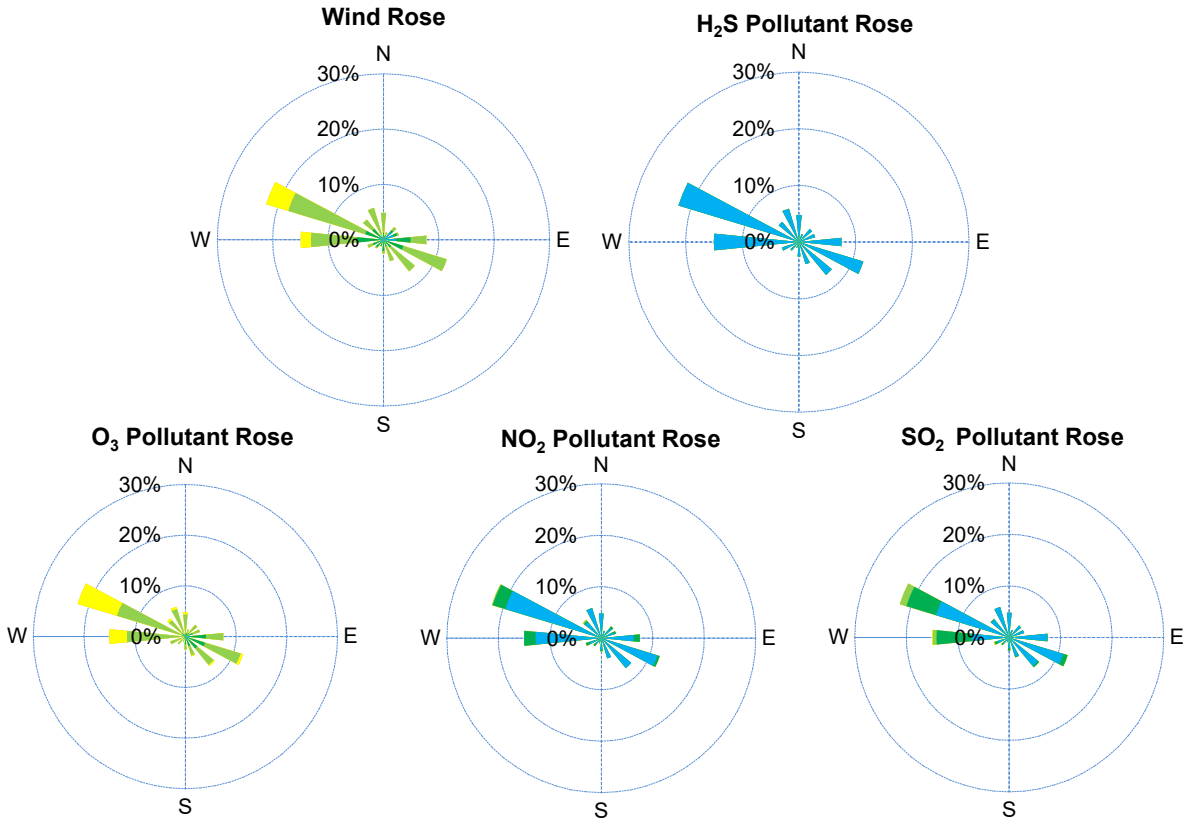
SESAA Glen Ewen Station - February 2024 Summary Report

Pollutants		Month Records		24-Hour Records				1-Hour Records			
Name	Conc. Unit	Avg. Conc.	Uptime	Maximum		SAAQS Standard	Exceed Days	Maximum		SAAQS Standard	Exceed Hours
				Conc.	Time			Conc.	Time		
NO	ppb	0.4	100.0%	1.4	Feb-12	-	-	8.3	Feb-12 18:00	-	-
NO ₂	ppb	2.4	100.0%	6.6	Feb-20	106	0	23.7	Feb-12 19:00	159	0
NO _x	ppb	2.8	100.0%	7.9	Feb-20	-	-	30.3	Feb-12 18:00	-	-
SO ₂	ppb	0.6	100.0%	2.4	Feb-20	48	0	17.2	Feb-20 12:00	172	0
O ₃	ppb	28.7	100.0%	42.6	Feb-17	-	-	45.0	Feb-10 15:00	82	0
H ₂ S	ppb	< 0.1	100.0%	< 0.1	-	3.6	0	0.9	Feb-06 07:00	11	0

SAAQS: Saskatchewan Ambient Air Quality Standards



SESAA Glen Ewen Station - February 2024 Summary Report



Parameters	Unit	Color Code for Wind Spd & Pollutant Conc. Class						
Wind Speed	m/s	$0.3 \leq WS < 1.4$	$1.4 \leq WS < 3.1$	$3.1 \leq WS < 7.8$	$7.8 \leq WS < 10.8$	$10.8 \leq WS < 13.6$	$WS \geq 13.6$	
SO ₂	ppb	$0 \leq C < 1$	$1 \leq C < 5$	$5 \leq C < 10$	$10 \leq C < 57$	$57 \leq C < 172$	$C \geq 172$	
NO ₂	ppb	$0 \leq C < 5$	$5 \leq C < 15$	$15 \leq C < 30$	$30 \leq C < 100$	$100 \leq C < 212$	$C \geq 212$	
O ₃	ppb	$0 \leq C < 10$	$10 \leq C < 20$	$20 \leq C < 40$	$40 \leq C < 60$	$60 \leq C < 82$	$C \geq 82$	
H ₂ S	ppb	$0 \leq C < 1$	$1 \leq C < 3.6$	$3.6 \leq C < 5$	$5 \leq C < 8$	$8 \leq C < 10.8$	$C \geq 10.8$	

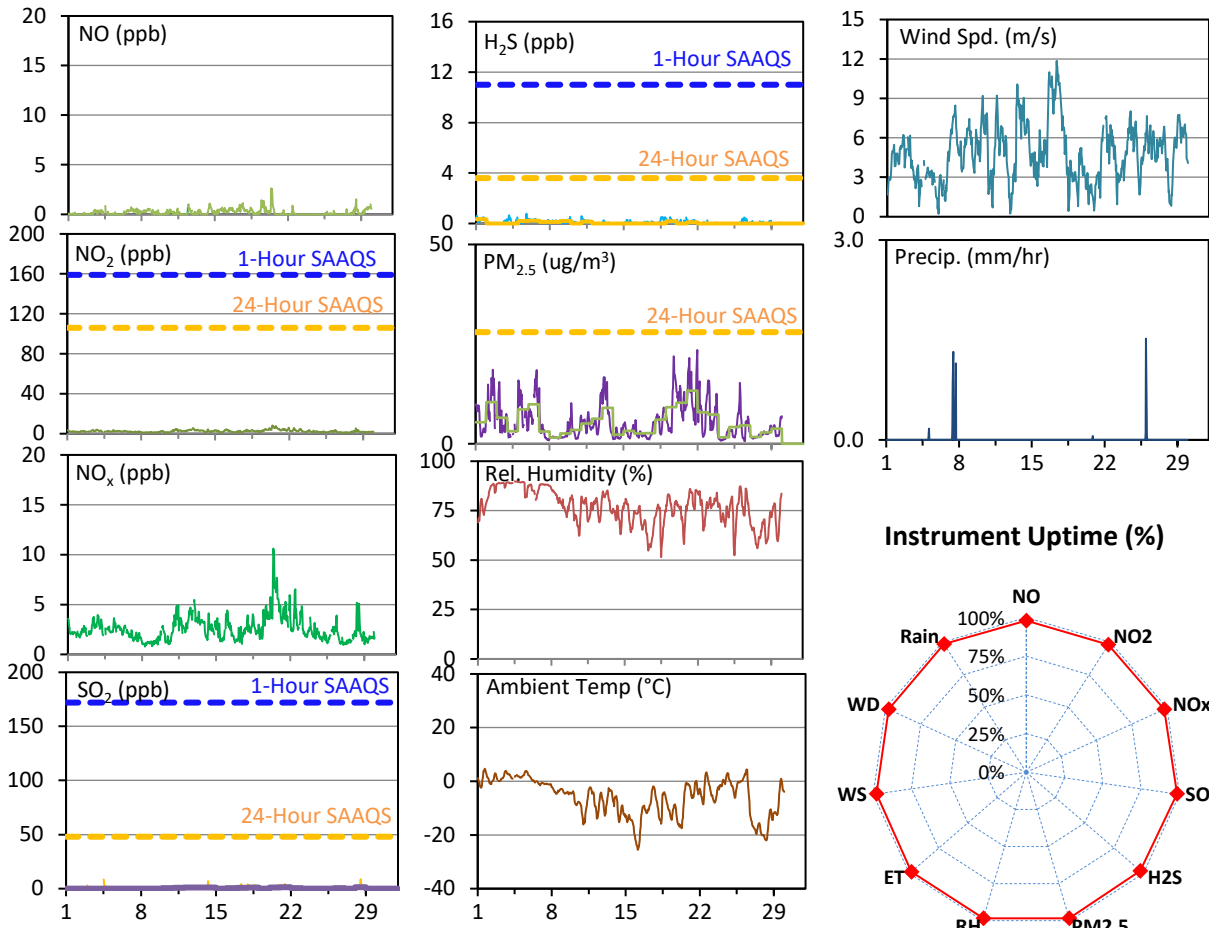
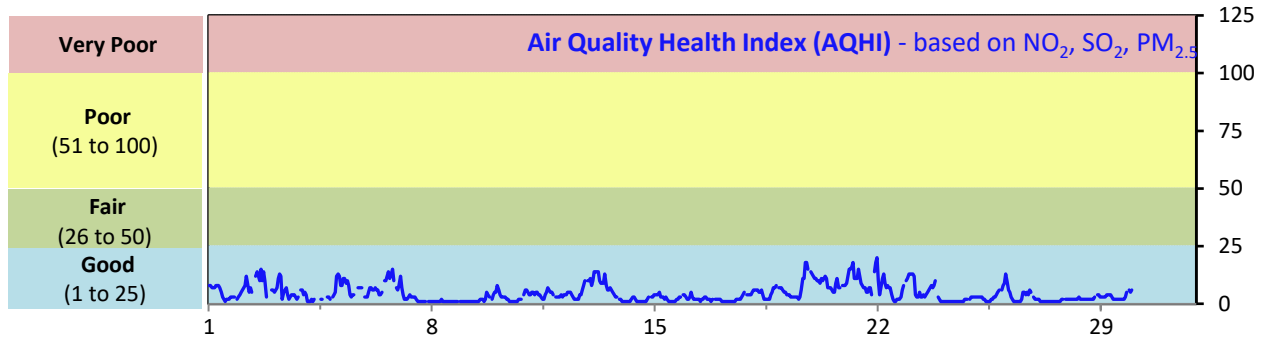
Monthly Update

- *All data has been slope, intercept, and baseline corrected. Data may change after validation process.
- *All compliance parameters were within the Saskatchewan Ambient Air Quality Standards.
- *All compliance parameters were more than 90% operational.

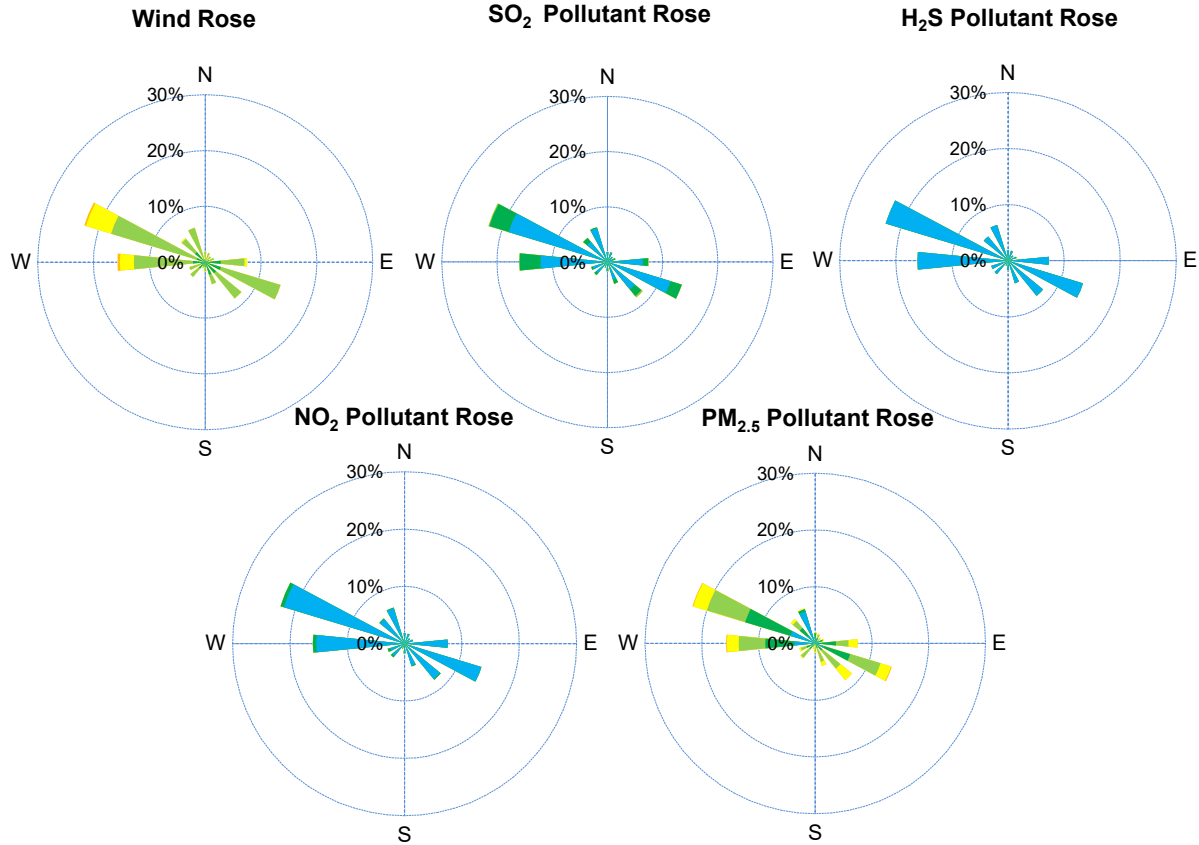
SESAA Oxbow Station - February 2024 Summary Report

Pollutants		Month Records		24-Hour Records				1-Hour Records			
Name	Conc. Unit	Avg. Conc.	Uptime	Maximum		SAAQS Standard	Exceed Days	Maximum		SAAQS Standard	Exceed Hours
				Conc.	Time			Conc.	Time		
NO	ppb	0.2	98.0%	0.6	Feb-17	-	-	2.6	Feb-20 09:00	-	-
NO ₂	ppb	2.5	98.0%	5.6	Feb-20	106	0	8.2	Feb-20 09:00	159	0
NO _x	ppb	2.6	98.0%	6.0	Feb-20	-	-	10.6	Feb-20 09:00	-	-
SO ₂	ppb	0.5	98.4%	1.3	Feb-21	48	0	8.6	Feb-28 12:00	172	0
H ₂ S	ppb	0.1	97.3%	0.3	Feb-1	3.6	0	0.8	Feb-05 18:00	11	0
PM _{2.5}	ug/m3	5.5	98.4%	13.3	Feb-21	28	0	23.5	Feb-21 23:00	-	-

SAAQS: Saskatchewan Ambient Air Quality Standards



SESAA Oxbow Station - February 2024 Summary Report



Parameters	Unit	Color Code for Wind Spd & Pollutant Conc. Class						
Wind Speed	m/s	0.3 ≤ WS < 1.4	1.4 ≤ WS < 3.1	3.1 ≤ WS < 7.8	7.8 ≤ WS < 10.8	10.8 ≤ WS < 13.6	WS ≥ 13.6	
SO ₂	ppb	0 ≤ C < 1	1 ≤ C < 5	5 ≤ C < 10	10 ≤ C < 57	57 ≤ C < 172	C ≥ 172	
NO ₂	ppb	0 ≤ C < 5	5 ≤ C < 15	15 ≤ C < 30	30 ≤ C < 100	100 ≤ C < 212	C ≥ 212	
H ₂ S	ppb	0 ≤ C < 1	1 ≤ C < 3.6	3.6 ≤ C < 5	5 ≤ C < 8	8 ≤ C < 10.8	C ≥ 10.8	
PM _{2.5}	ug/m ³	0 ≤ C < 2	2 ≤ C < 4	4 ≤ C < 10	10 ≤ C < 20	20 ≤ C < 30	C ≥ 30	

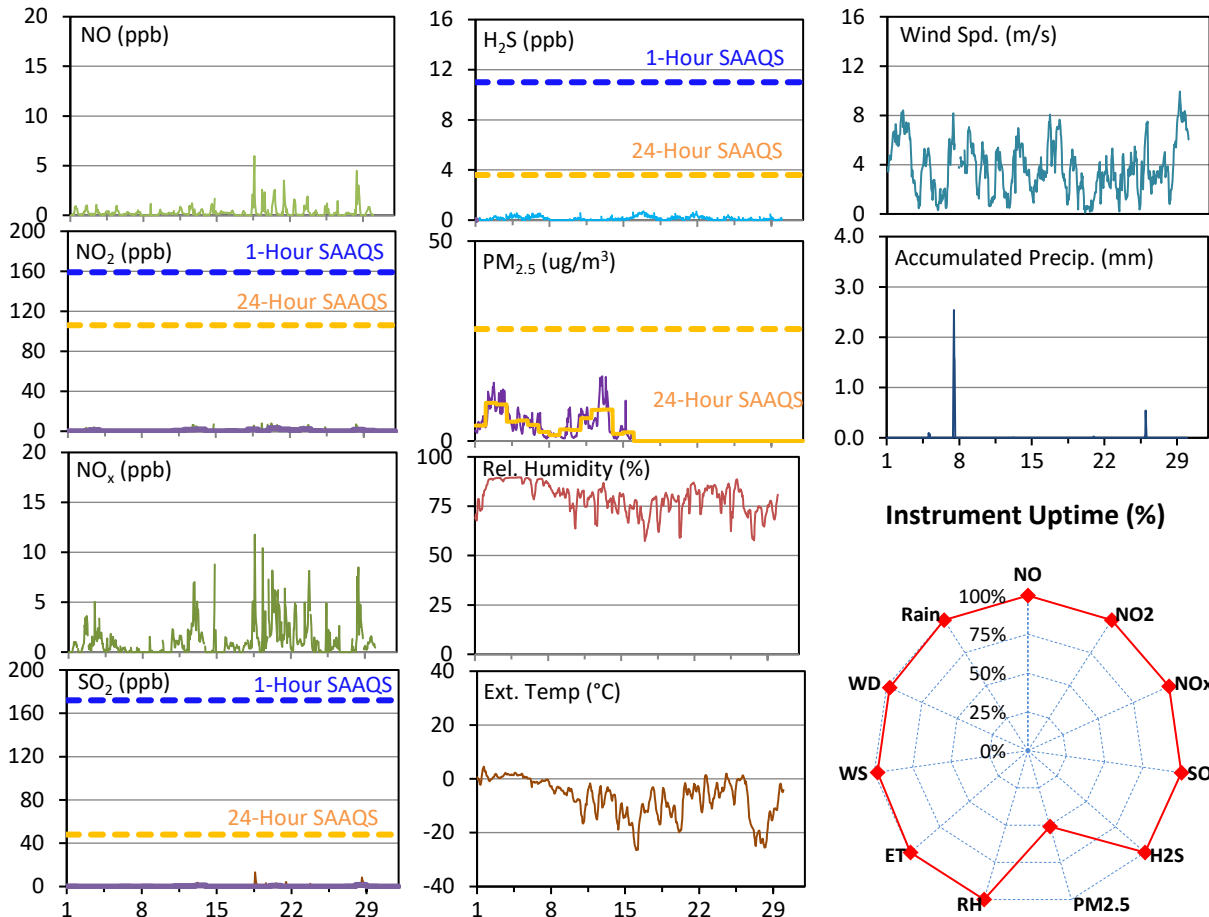
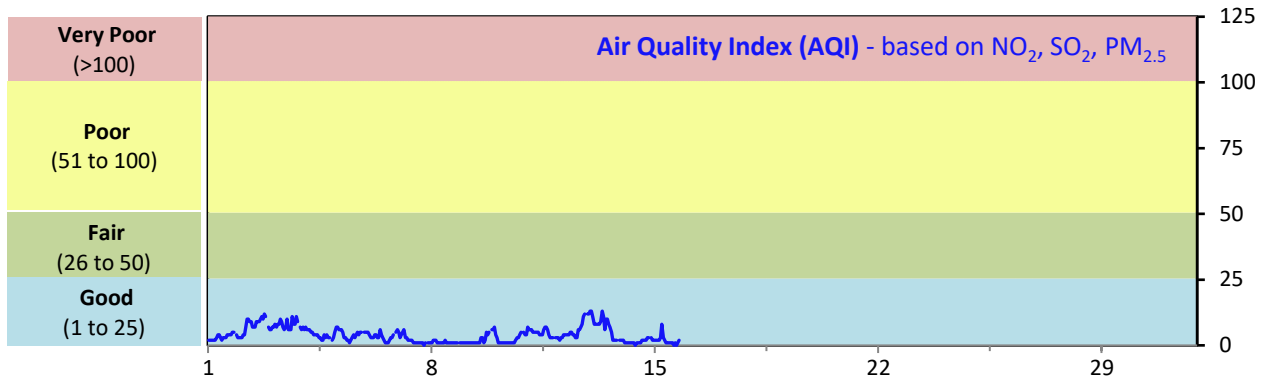
Monthly Update

- *All data has been slope, intercept, and baseline corrected. Data may change after validation process.
- *All compliance parameters were within the Saskatchewan Ambient Air Quality Standards.
- *All compliance parameters were greater than 90% operational.
- *11- 19 hours of data flagged as "power failure" for the whole station for intermittent power issues.
- *4 hours of data flagged as "analyzer failure" for WS and WD due to flatlined data.
- *2 hours of data flagged as "analyzer failure" for NO/NO₂/NO_x due to analyzer spikes caused by the power issues.

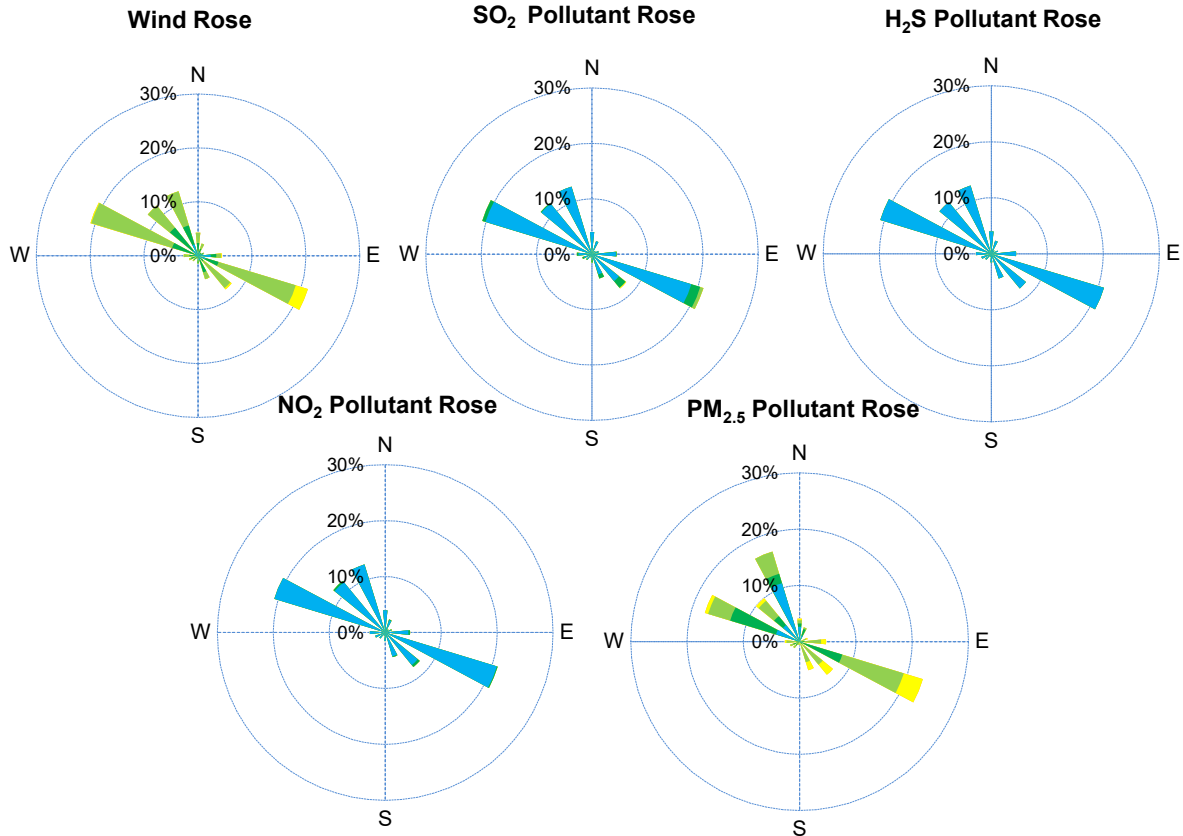
SESAA Stoughton Station - February 2024 Summary Report

Pollutants		Month Records		24-Hour Records				1-Hour Records			
Name	Conc. Unit	Avg. Conc.	Uptime	Maximum		SAAQS Standard	Exceed Days	Maximum		SAAQS Standard	Exceed Hours
				Conc.	Time			Conc.	Time		
NO	ppb	0.3	100.0%	0.9	Feb-28	-	-	6.0	Feb-18 14:00	-	-
NO ₂	ppb	0.8	100.0%	3.2	Feb-20	106	0	7.9	Feb-20 06:00	159	0
NO _x	ppb	1.1	100.0%	3.9	Feb-20	-	-	11.8	Feb-18 14:00	-	-
SO ₂	ppb	0.3	100.0%	1.5	Feb-28	48	0	13.2	Feb-18 14:00	172	0
H ₂ S	ppb	0.1	100.0%	0.5	Feb-16	3.6	0	0.7	Feb-16 21:00	11	0
PM _{2.5}	ug/m ³	4.8	51.0%	9.5	Feb-2	28	0	16.2	Feb-13 00:00	-	-

SAAQS: Saskatchewan Ambient Air Quality Standards



SESAA Stoughton Station - February 2024 Summary Report



Parameters	Unit	Color Code for Wind Spd & Pollutant Conc. Class						
Wind Speed	m/s	$0.3 \leq WS < 1.4$	$1.4 \leq WS < 3.1$	$3.1 \leq WS < 7.8$	$7.8 \leq WS < 10.8$	$10.8 \leq WS < 13.6$	$WS \geq 13.6$	
SO ₂	ppb	$0 \leq C < 1$	$1 \leq C < 5$	$5 \leq C < 10$	$10 \leq C < 57$	$57 \leq C < 172$	$C \geq 172$	
NO ₂	ppb	$0 \leq C < 5$	$5 \leq C < 15$	$15 \leq C < 30$	$30 \leq C < 100$	$100 \leq C < 212$	$C \geq 212$	
H ₂ S	ppb	$0 \leq C < 1$	$1 \leq C < 3.6$	$3.6 \leq C < 5$	$5 \leq C < 8$	$8 \leq C < 10.8$	$C \geq 10.8$	
PM _{2.5}	ug/m ³	$0 \leq C < 2$	$2 \leq C < 4$	$4 \leq C < 10$	$10 \leq C < 20$	$20 \leq C < 30$	$C \geq 30$	

Monthly Update

*All data has been slope, intercept, and baseline corrected. Data may change after validation process.

*All compliance parameters were within the Saskatchewan Ambient Air Quality Standards.

*All compliance parameters were above 90% operational except PM2.5.

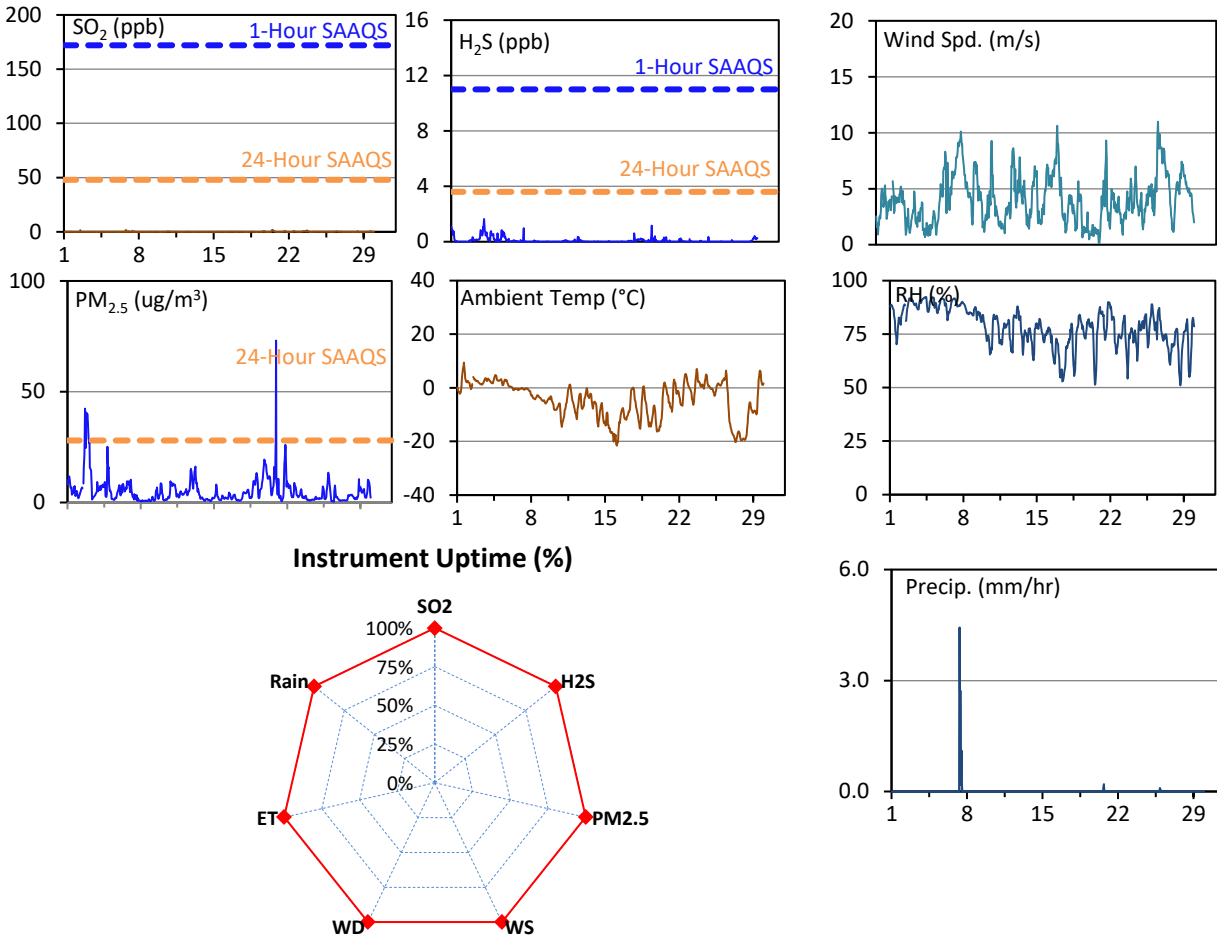
*15 hours of data flagged as "analyzer failure" for Windspeed and Wind direction due to flatlined data.

*341 hours of data flagged as "analyzer failure" for PM2.5 due to unusual spikes and plateaus from Feb 21 through Feb 29.

SESAA Torquay Station - February 2024 Summary Report

Pollutants		Month Records		24-Hour Records				1-Hour Records			
Name	Conc. Unit	Avg. Conc.	Uptime	Maximum		SAAQS Standard	Exceed Days	Maximum		SAAQS Standard	Exceed Hours
				Conc.	Time			Conc.	Time		
SO ₂	ppb	0.1	99.9%	0.4	Feb-23	48	0	1.9	Feb-20 11:00	172	0
H ₂ S	ppb	0.1	99.7%	0.6	Feb-4	3.6	0	1.6	Feb-04 02:00	11	0
PM _{2.5}	ug/m3	5.2	99.9%	18.0	Feb-2	28	0	73.1	Feb-20 22:00	-	-

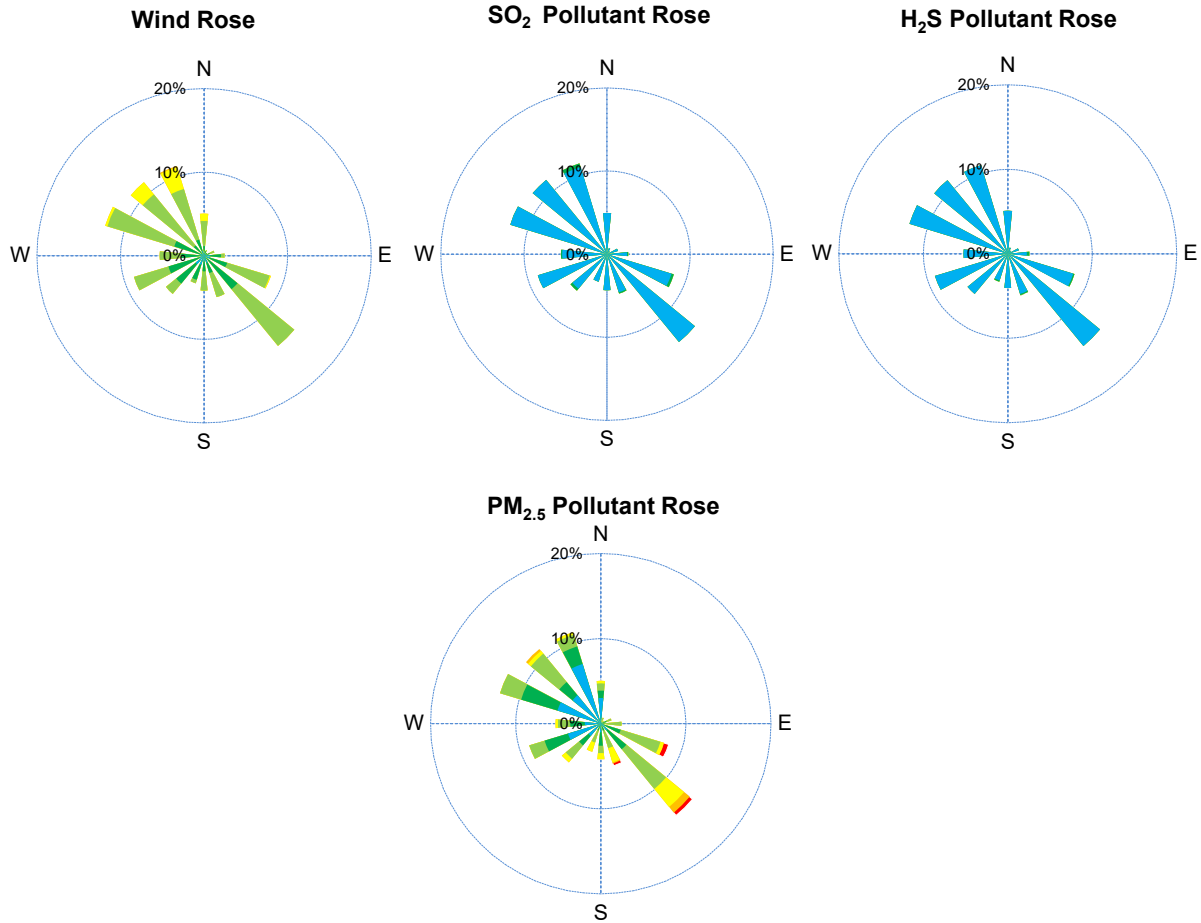
SAAQS: Saskatchewan Ambient Air Quality Standards



Monthly Update

- *All data has been slope, intercept, and baseline corrected. Data may change after validation process.
- *All compliance parameters were within the Saskatchewan Ambient Air Quality Standards.
- *All compliance parameters had greater than 90% operational uptime.
- *1-2 hours of data for all analyzers flagged as "power failure" due to power issues causing flatlines and spikes.

SESAA Torquay Station - February 2024 Summary Report

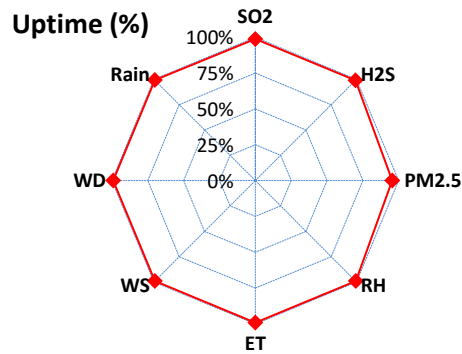
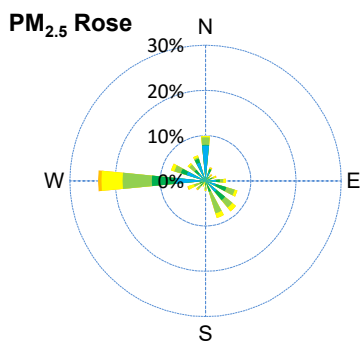
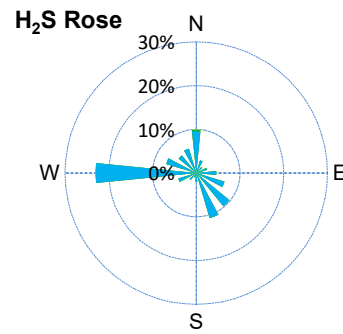
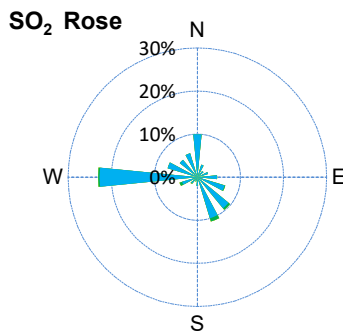
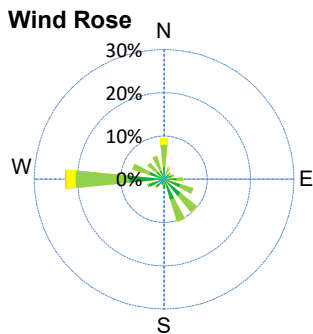
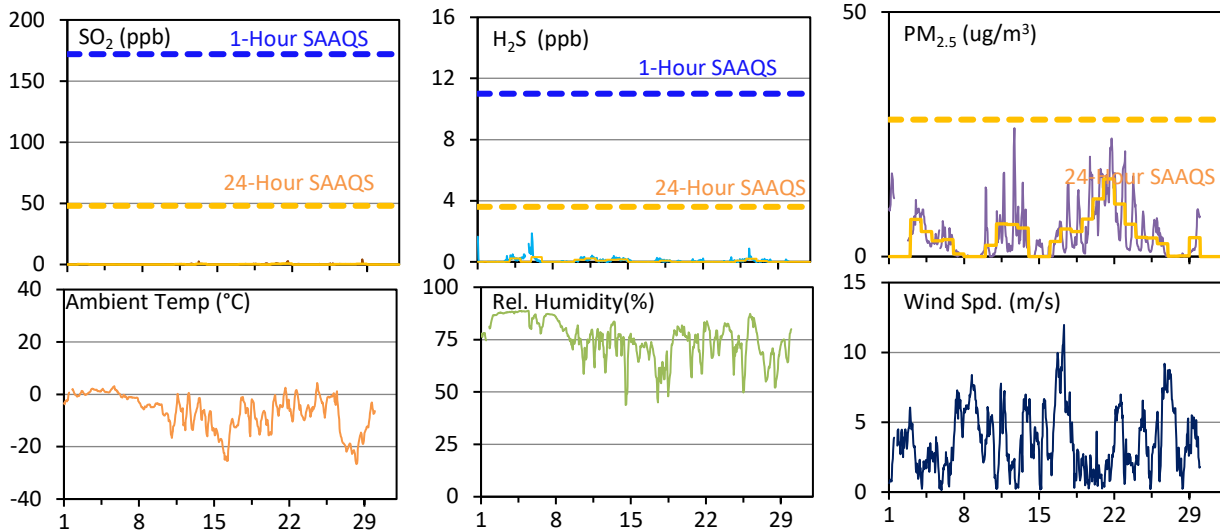


Parameters	Unit	Color Code for Wind Spd & Pollutant Conc. Class						
Wind Speed	m/s	$0.3 \leq WS < 1.4$	$1.4 \leq WS < 3.1$	$3.1 \leq WS < 7.8$	$7.8 \leq WS < 10.8$	$10.8 \leq WS < 13.6$	$WS \geq 13.6$	
SO ₂	ppb	$0 \leq C < 1$	$1 \leq C < 5$	$5 \leq C < 10$	$10 \leq C < 57$	$57 \leq C < 172$	$C \geq 172$	
NO ₂	ppb	$0 \leq C < 5$	$5 \leq C < 15$	$15 \leq C < 30$	$30 \leq C < 100$	$100 \leq C < 212$	$C \geq 212$	
O ₃	ppb	$0 \leq C < 10$	$10 \leq C < 20$	$20 \leq C < 40$	$40 \leq C < 60$	$60 \leq C < 82$	$C \geq 82$	
H ₂ S	ppb	$0 \leq C < 1$	$1 \leq C < 3.6$	$3.6 \leq C < 5$	$5 \leq C < 8$	$8 \leq C < 10.8$	$C \geq 10.8$	
PM _{2.5}	ug/m ³	$0 \leq C < 2$	$2 \leq C < 4$	$4 \leq C < 10$	$10 \leq C < 20$	$20 \leq C < 30$	$C \geq 30$	

SESAA Wauchope Station - February 2024 Summary Report

Pollutants		Month Records		24-Hour Records				1-Hour Records			
Name	Conc. Unit	Avg. Conc.	Uptime	Maximum		SAAQS Objective	Exceed Days	Maximum		SAAQS Objective	Exceed Hours
				Conc.	Time			Conc.	Time		
SO ₂	ppb	0.2	98.9%	0.7	Feb-21	48	0	4.3	Feb-28 13:00	172	0
H ₂ S	ppb	0.1	98.9%	0.3	Feb-6	3.6	0	1.9	Feb-06 01:00	11	0
PM _{2.5}	ug/m3	4.8	95.5%	15.9	Feb-21	28	0	26.3	Feb-12 16:00	-	-

SAAQS: Saskatchewan Ambient Air Quality Standards



SESAA Wauchope Station - February 2024 Summary Report

Parameters	Unit	Color Code for Wind Spd & Pollutant Conc. Class					
Wind Speed	m/s	0.3 ≤ WS < 1.4	1.4 ≤ WS < 3.1	3.1 ≤ WS < 7.8	7.8 ≤ WS < 10.8	10.8 ≤ WS < 13.6	WS ≥ 13.6
SO ₂	ppb	0 ≤ C < 1	1 ≤ C < 5	5 ≤ C < 10	10 ≤ C < 57	57 ≤ C < 172	C ≥ 172
H ₂ S	ppb	0 ≤ C < 1	1 ≤ C < 3.6	3.6 ≤ C < 5	5 ≤ C < 8	8 ≤ C < 10.8	C ≥ 10.8
PM _{2.5}	ug/m ³	0 ≤ C < 2	2 ≤ C < 4	4 ≤ C < 10	10 ≤ C < 20	20 ≤ C < 30	C ≥ 30

Monthly Update

*All data has been slope, intercept, and baseline corrected. Data may change after validation process.

*All compliance parameters were within the Saskatchewan Ambient Air Quality Standards.

*All compliance parameters were greater than 90% operational, except PM2.5.

*6 hours of data for all parameters was flagged as "power failure" due to power issues causing flatlined data.

*25 hours of data for PM2.5 was flagged as "analyzer failure" due to high plateau of data at the beginning of the month.

*2 hours of data for H2S and SO2 was flagged as "analyzer failure" due to large spike and drop on February 1.

*Routine quarterly calibrations were completed on February 5, 2024.

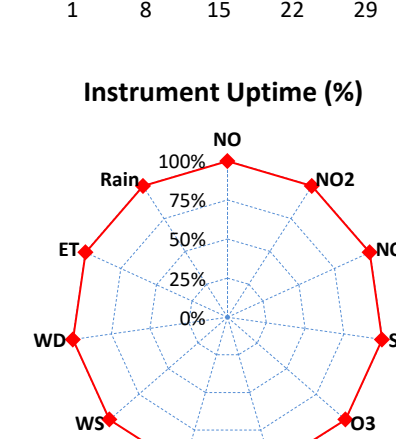
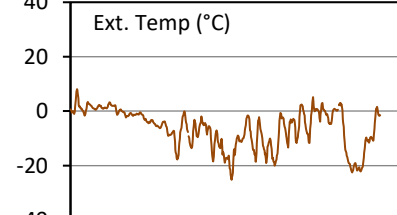
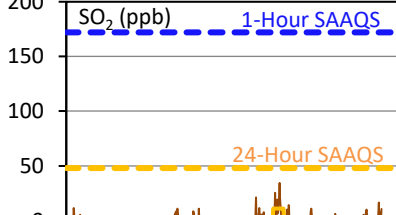
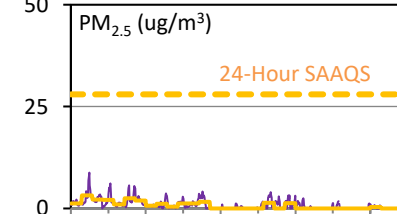
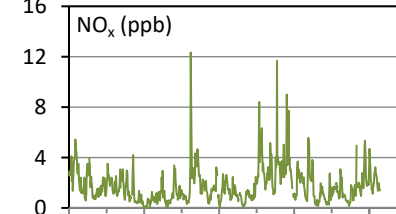
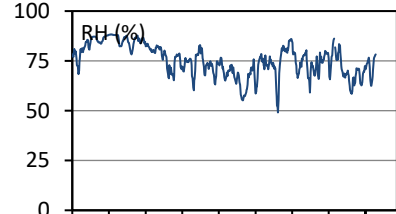
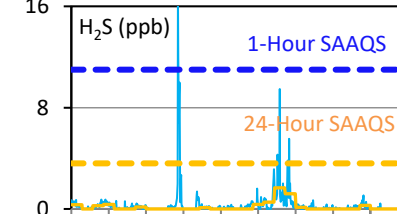
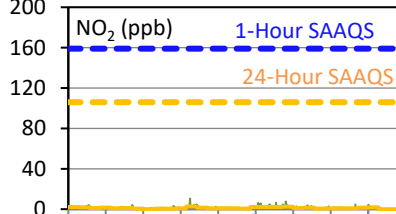
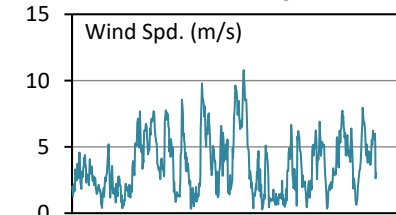
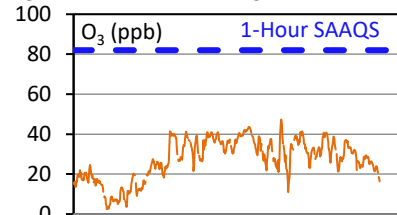
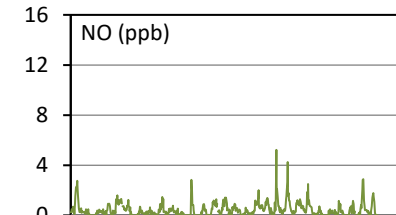
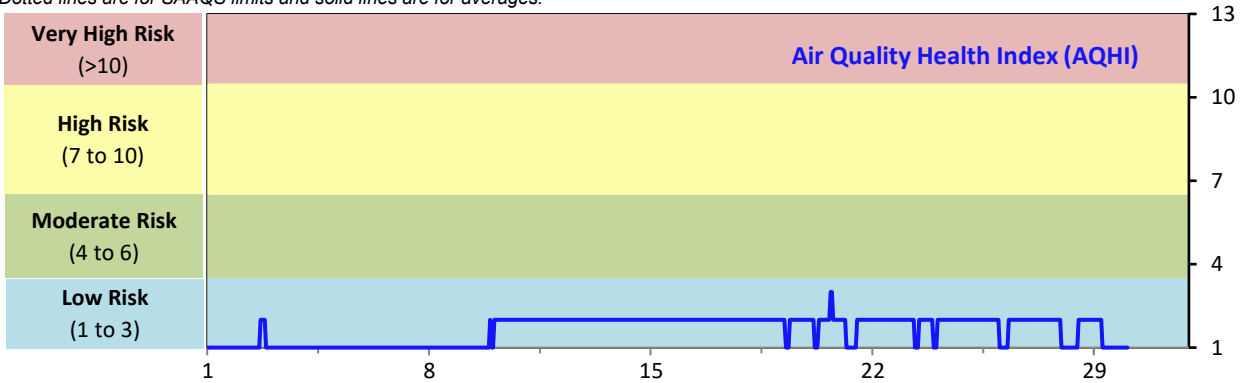
SESAA Weyburn Station - February 2024 Summary Report

Pollutants		Month Records		24-Hour Records				1-Hour Records			
Name	Conc. Unit	Avg. Conc.	Uptime	Maximum		SAAQS Standard	Exceed Days	Maximum		SAAQS Standard	Exceed Hours
				Conc.	Time			Conc.	Time		
NO	ppb	0.5	99.7%	1.0	Feb-21	-	-	5.2	Feb-20 09:00	-	-
NO ₂	ppb	1.3	99.7%	2.7	Feb-12	106	0	10.5	Feb-12 08:00	159	0
NO _x	ppb	1.8	99.7%	3.5	Feb-21	-	-	12.3	Feb-12 08:00	-	-
SO ₂	ppb	1.2	99.7%	11.0	Feb-20	48	0	34.4	Feb-20 14:00	172	0
O ₃	ppb	27.4	99.7%	41.6	Feb-17	-	-	47.3	Feb-20 16:00	82	0
H ₂ S	ppb	0.3	99.3%	1.7	Feb-20	3.6	0	17.2	Feb-10 23:00	11	2
PM _{2.5}	ug/m3	0.9	99.7%	3.2	Feb-2	28	0	8.8	Feb-02 17:00	-	-

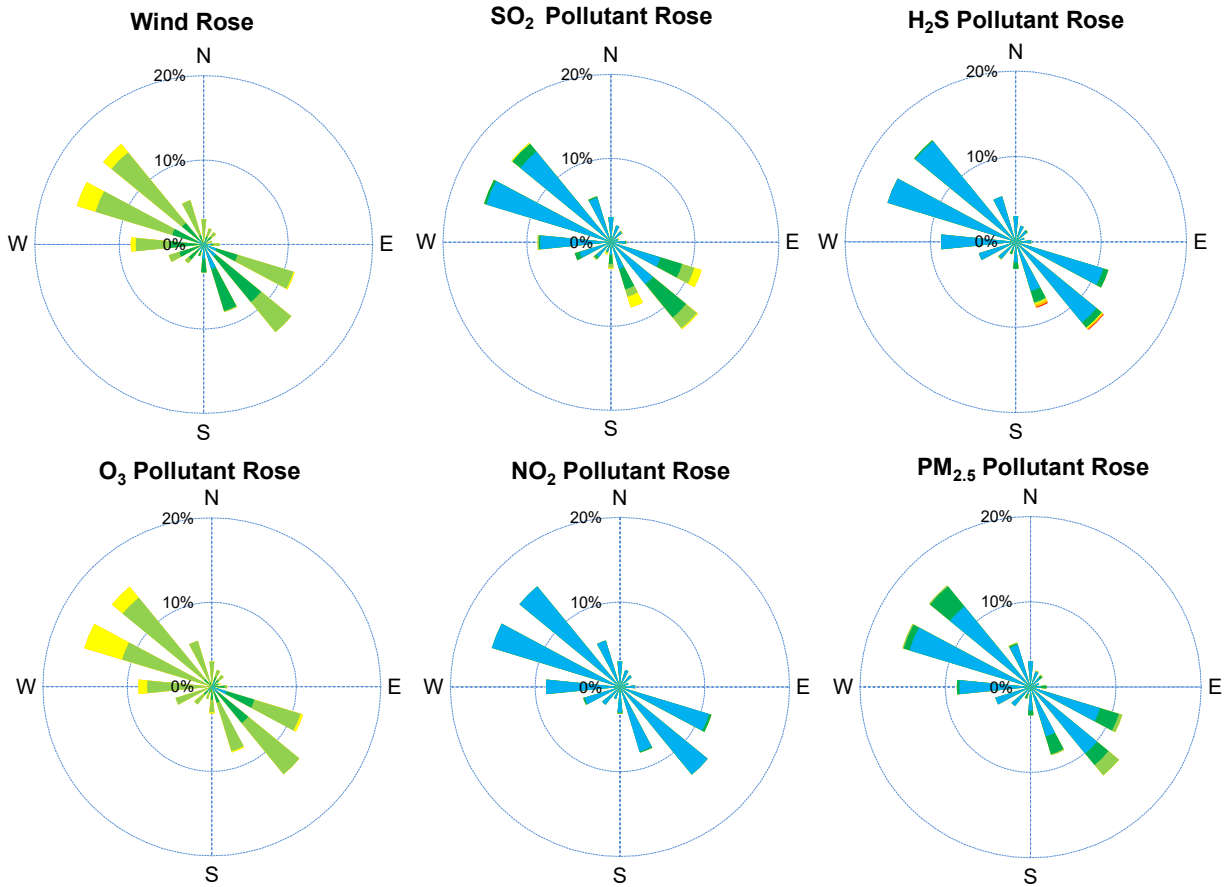
SAAQS: Saskatchewan Ambient Air Quality Standards

* Air Quality Standard refers to Saskatchewan Ambient Air Quality Standards (SAAQS).

* Dotted lines are for SAAQS limits and solid lines are for averages.



SESAA Weyburn Station - February 2024 Summary Report



Parameters	Unit	Color Code for Wind Spd & Pollutant Conc. Class					
Wind Speed	m/s	0.3 ≤ WS < 1.4	1.4 ≤ WS < 3.1	3.1 ≤ WS < 7.8	7.8 ≤ WS < 10.8	10.8 ≤ WS < 13.6	WS ≥ 13.6
SO ₂	ppb	0 ≤ C < 1	1 ≤ C < 5	5 ≤ C < 10	10 ≤ C < 57	57 ≤ C < 172	C ≥ 172
NO ₂	ppb	0 ≤ C < 5	5 ≤ C < 15	15 ≤ C < 30	30 ≤ C < 100	100 ≤ C < 212	C ≥ 212
O ₃	ppb	0 ≤ C < 10	10 ≤ C < 20	20 ≤ C < 40	40 ≤ C < 60	60 ≤ C < 82	C ≥ 82
H ₂ S	ppb	0 ≤ C < 1	1 ≤ C < 3.6	3.6 ≤ C < 5	5 ≤ C < 8	8 ≤ C < 10.8	C ≥ 10.8
PM _{2.5}	ug/m ³	0 ≤ C < 2	2 ≤ C < 4	4 ≤ C < 10	10 ≤ C < 20	20 ≤ C < 30	C ≥ 30

Monthly Update

- *All data has been slope, intercept, and baseline corrected. Data may change after validation process.
- *All compliance parameters were within the Saskatchewan Ambient Air Quality Standards with the exception of two 1-hour H2S exceedances.
- *All compliance parameters were above 90% operational.
- *2-3 hours of data for all parameters was flagged as "power failure" due to power issues causing flatlines and spikes.
- *2 hours of data for H2S was flagged as "analyzer failure" due to analyzer issues collecting data.

Exceedance Summary

1-hour Exceedance Information			Summary of Other Parameters During Exceedance									
Pollutant	Conc. ppb	Exceedance Time mmm-dd hh:mm	WS m/s	WD deg	AQHI -	Rain mm	SO2 ppb	NO2 ppb	O3 ppb	H2S ppb	PM2.5 ug/m3	
H2S	17.2	Feb-10 23:00	1.4	143	2	0.0	6	1	27	17.2	1.1	
H2S	12.0	Feb-11 00:00	1.6	153	2	0.0	5.2	0.9	27	12.0	1	