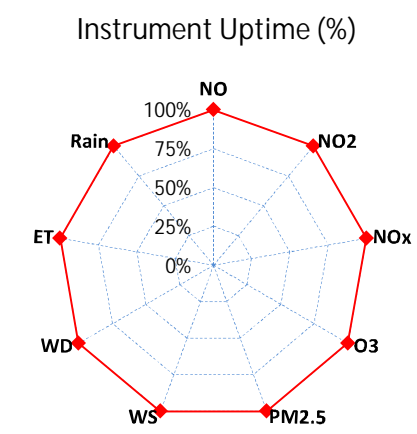
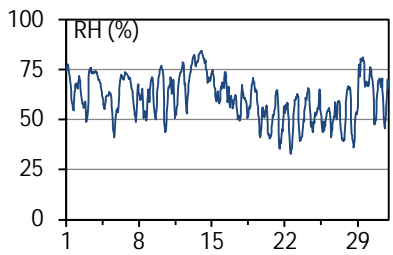
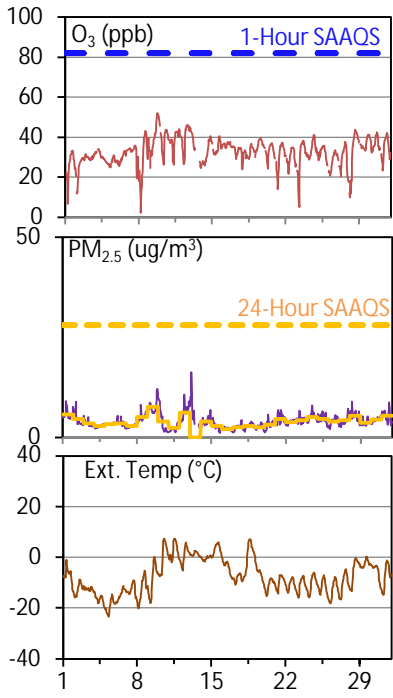
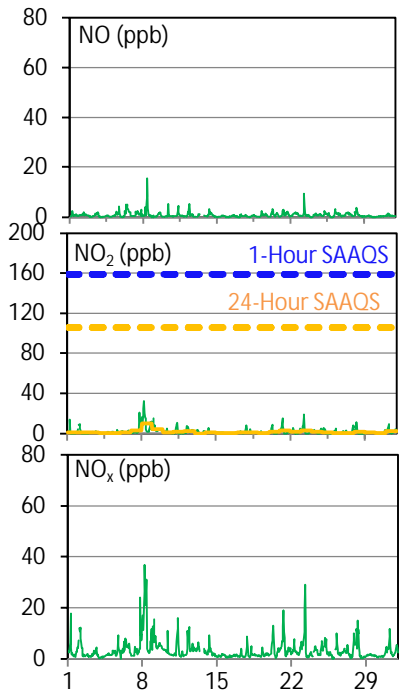
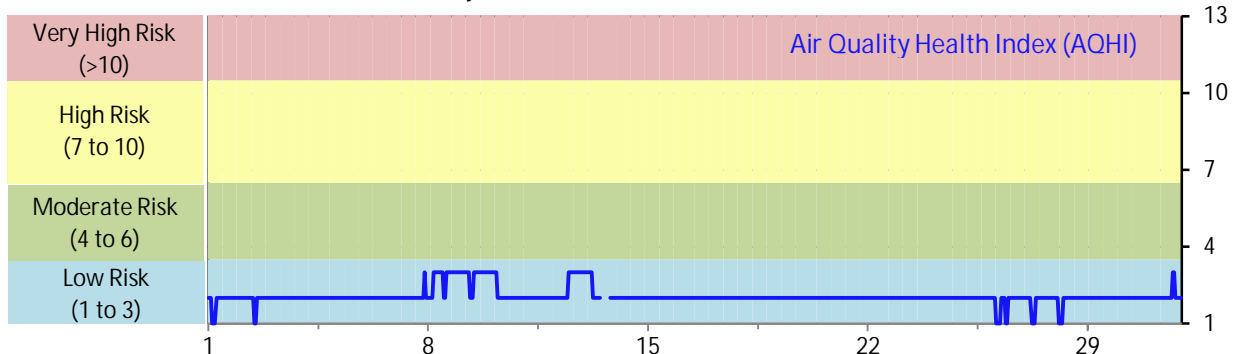


# SESAA Esterhazy Station - March 2024 Summary Report

Pollutants		Month Records		24-Hour Records				1-Hour Records			
Name	Conc. Unit	Avg. Conc.	Uptime	Maximum		SAAQS Standard	Exceed Days	Maximum		SAAQS Standard	Exceed Hours
				Conc.	Time			Conc.	Time		
NO	ppb	0.7	100.0%	2.0	Mar-8	-	-	15.5	Mar-08 09:00	-	-
NO <sub>2</sub>	ppb	1.9	100.0%	10.5	Mar-8	106	0	32.8	Mar-08 05:00	159	0
NO <sub>x</sub>	ppb	3.3	100.0%	12.7	Mar-8	-	-	37.0	Mar-08 05:00	-	-
O <sub>3</sub>	ppb	32.6	100.0%	40.8	Mar-9	-	-	52.1	Mar-09 19:00	82	0
PM <sub>2.5</sub>	ug/m3	4.0	100.0%	7.6	Mar-9	28	0	16.3	Mar-13 03:00	-	-

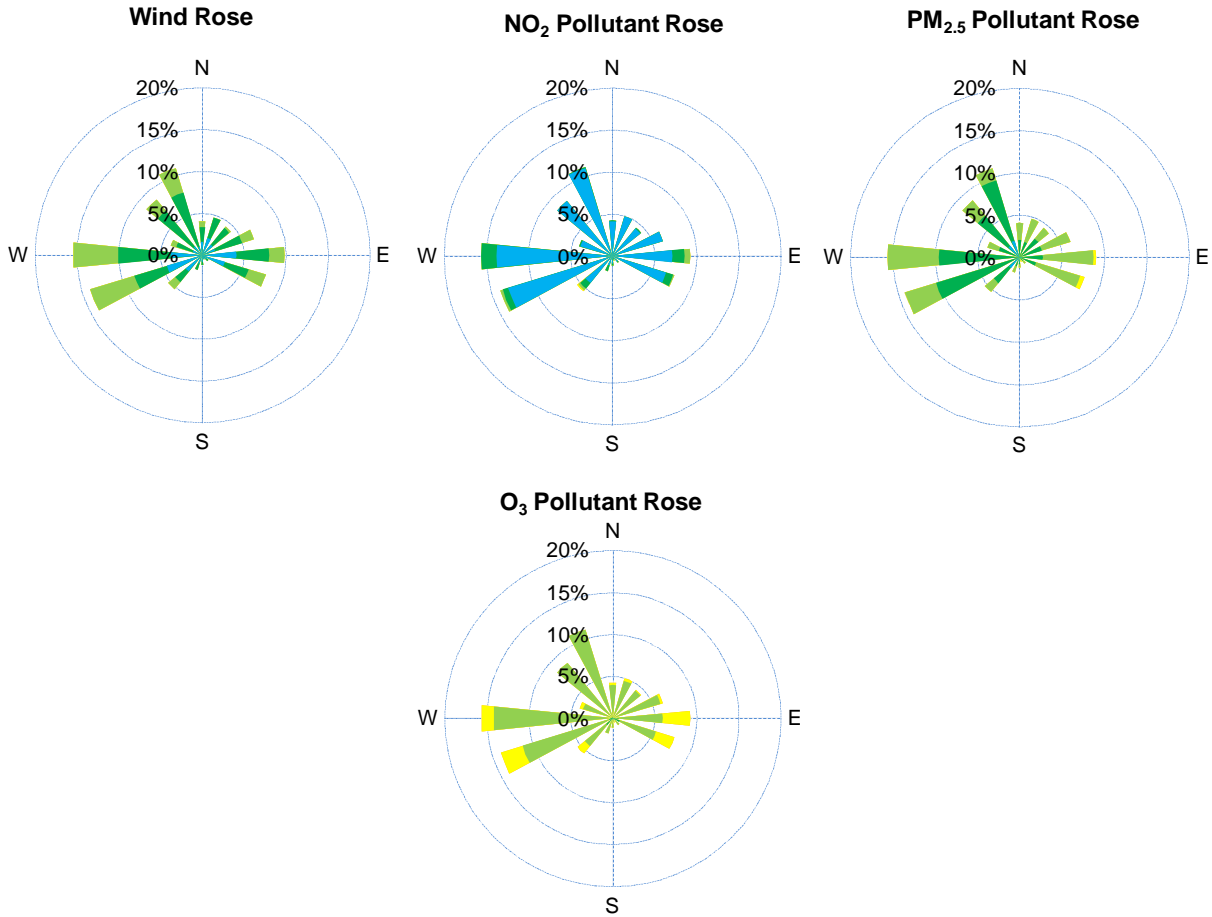
SAAQS: Saskatchewan Ambient Air Quality Standards



## Monthly Update

- \*All data has been slope, intercept, and baseline corrected. Data may change after validation process.
- \*All compliance parameters were within the Saskatchewan Ambient Air Quality Standards.
- \*All compliance parameters were above 90% operational.
- \*Routine quarterly calibrations were completed on March 13, 2024

# SESAA Esterhazy Station - March 2024 Summary Report

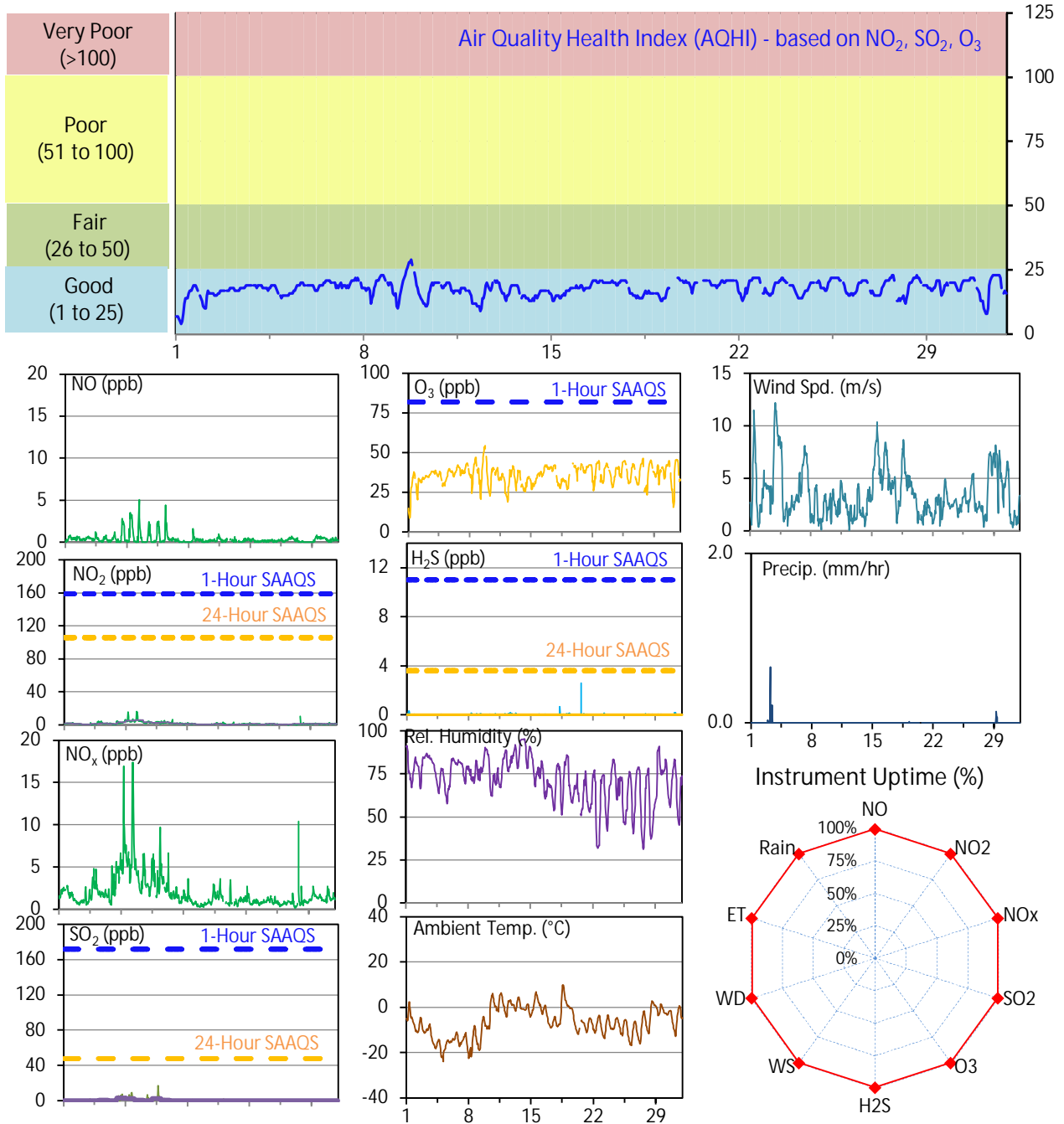


Parameters	Unit	Color Code for Wind Spd & Pollutant Conc. Class						
Wind Speed	m/s	$0.3 \leq WS < 1.4$	$1.4 \leq WS < 3.1$	$3.1 \leq WS < 7.8$	$7.8 \leq WS < 10.8$	$10.8 \leq WS < 13.6$	$WS \geq 13.6$	
NO <sub>2</sub>	ppb	$0 \leq C < 5$	$5 \leq C < 15$	$15 \leq C < 30$	$30 \leq C < 100$	$C \geq 100$		
PM <sub>2.5</sub>	ug/m <sup>3</sup>	$0 \leq C < 2$	$2 \leq C < 4$	$4 \leq C < 10$	$10 \leq C < 20$	$C \geq 20$		
O <sub>3</sub>	ppb	$0 \leq C < 10$	$10 \leq C < 20$	$20 \leq C < 40$	$40 \leq C < 60$	$60 \leq C < 82$		$C \geq 82$

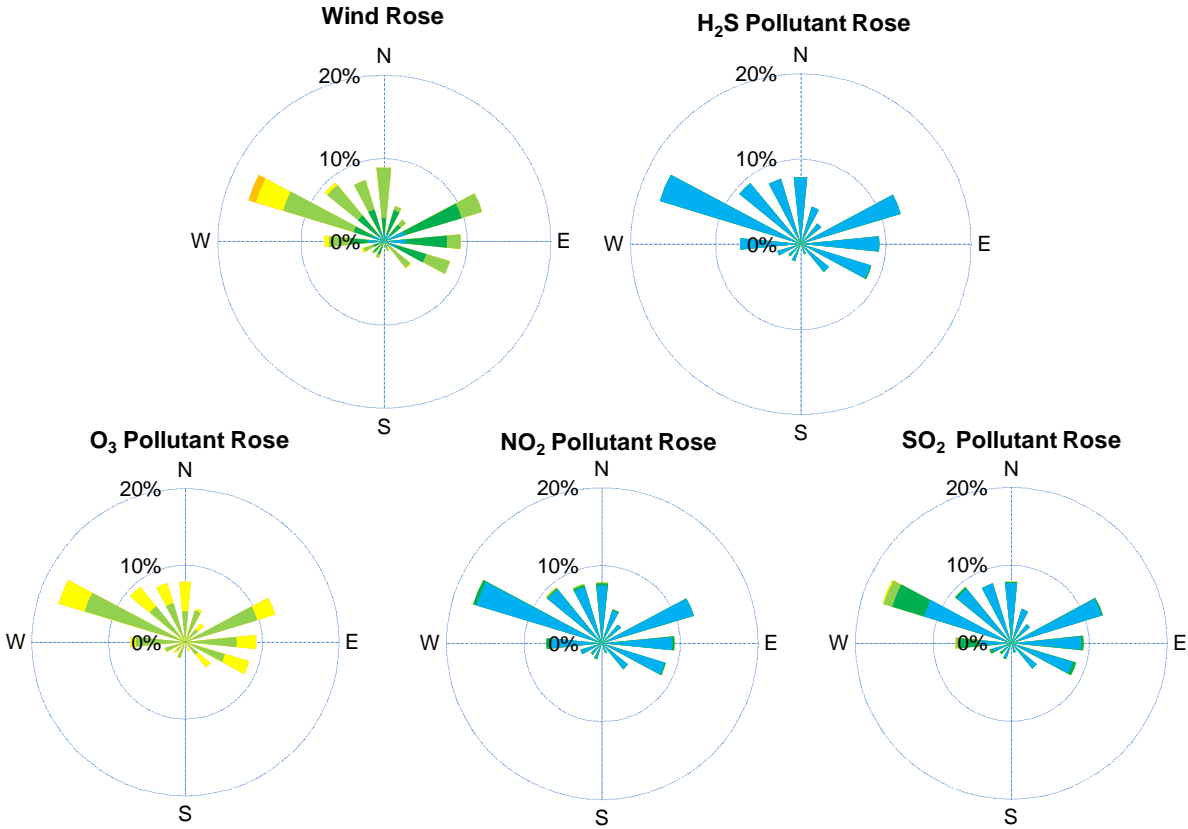
# SESAA Glen Ewen Station - March 2024 Summary Report

Pollutants		Month Records		24-Hour Records				1-Hour Records			
Name	Conc. Unit	Avg. Conc.	Uptime	Maximum		SAAQS Standard	Exceed Days	Maximum		SAAQS Standard	Exceed Hours
				Conc.	Time			Conc.	Time		
NO	ppb	0.4	99.3%	1.2	Mar-8	-	-	5.1	Mar-09 09:00	-	-
NO <sub>2</sub>	ppb	1.6	99.3%	6.2	Mar-9	106	0	16.6	Mar-09 05:00	159	0
NO <sub>x</sub>	ppb	1.9	99.3%	6.9	Mar-9	-	-	17.4	Mar-09 07:00	-	-
SO <sub>2</sub>	ppb	0.4	99.5%	3.0	Mar-7	48	0	17.2	Mar-11 16:00	172	0
O <sub>3</sub>	ppb	35.7	99.5%	40.1	Mar-21	-	-	54.5	Mar-09 18:00	82	0
H <sub>2</sub> S	ppb	< 0.1	99.5%	< 0.1	-	3.6	0	2.6	Mar-20 15:00	11	0

SAAQS: Saskatchewan Ambient Air Quality Standards



# SESAA Glen Ewen Station - March 2024 Summary Report



Parameters	Unit	Color Code for Wind Spd & Pollutant Conc. Class						
Wind Speed	m/s	0.3 ≤ WS < 1.4	1.4 ≤ WS < 3.1	3.1 ≤ WS < 7.8	7.8 ≤ WS < 10.8	10.8 ≤ WS < 13.6	WS ≥ 13.6	
SO <sub>2</sub>	ppb	0 ≤ C < 1	1 ≤ C < 5	5 ≤ C < 10	10 ≤ C < 57	57 ≤ C < 172	C ≥ 172	
NO <sub>2</sub>	ppb	0 ≤ C < 5	5 ≤ C < 15	15 ≤ C < 30	30 ≤ C < 100	100 ≤ C < 212	C ≥ 212	
O <sub>3</sub>	ppb	0 ≤ C < 10	10 ≤ C < 20	20 ≤ C < 40	40 ≤ C < 60	60 ≤ C < 82	C ≥ 82	
H <sub>2</sub> S	ppb	0 ≤ C < 1	1 ≤ C < 3.6	3.6 ≤ C < 5	5 ≤ C < 8	8 ≤ C < 10.8	C ≥ 10.8	

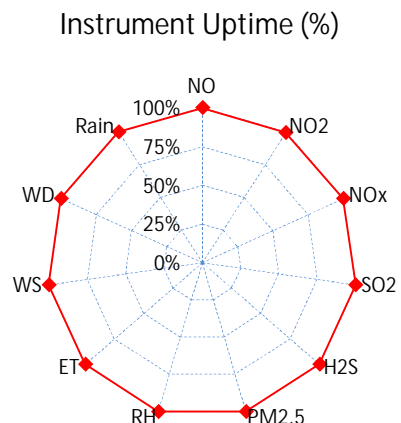
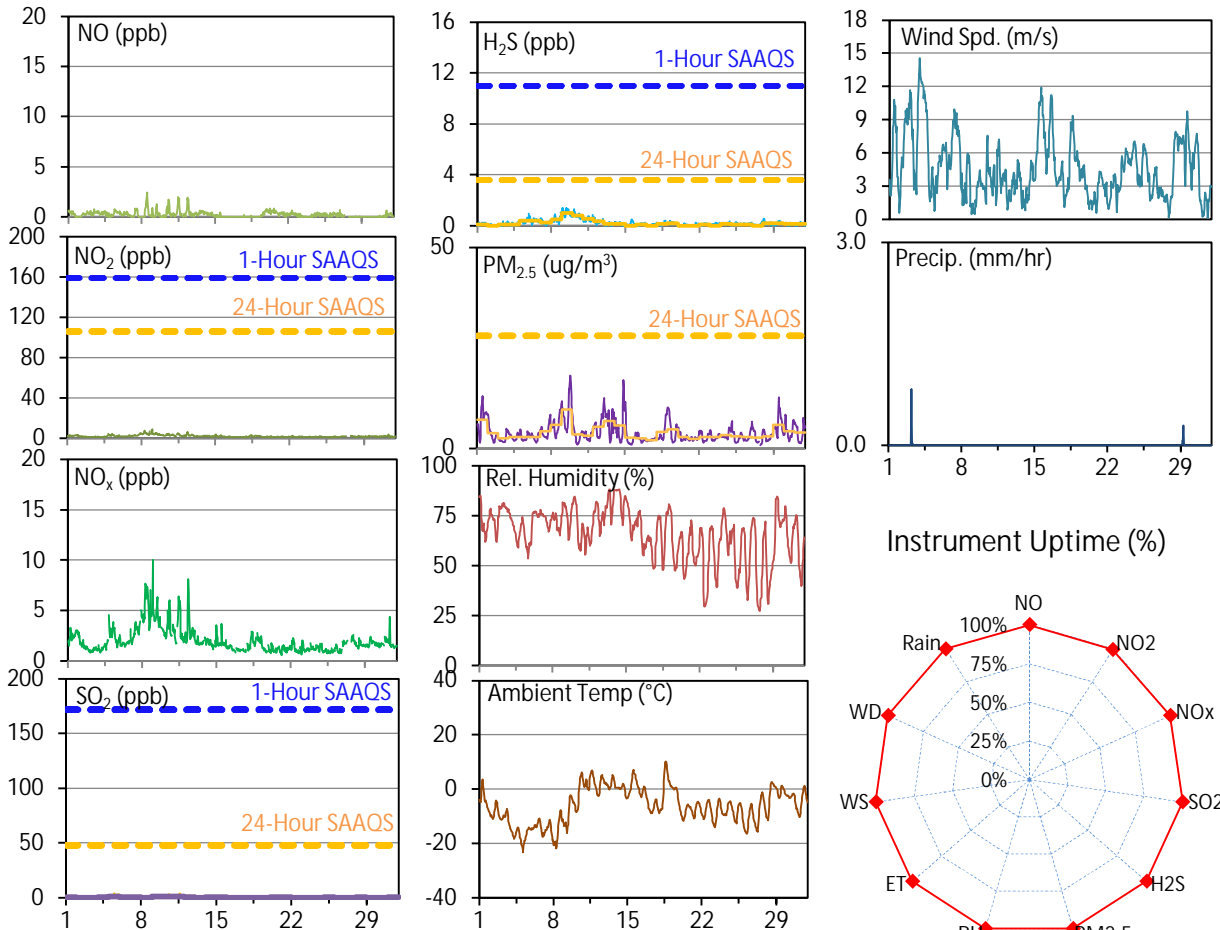
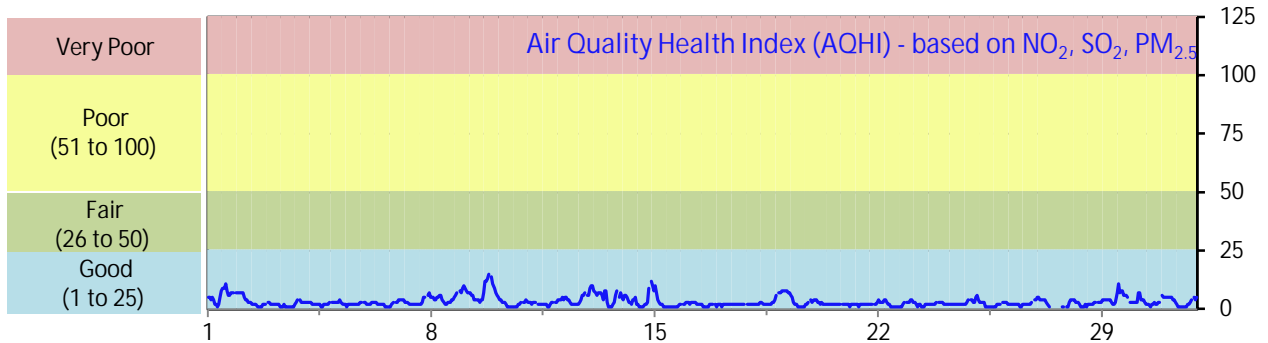
## Monthly Update

- \*All data has been slope, intercept, and baseline corrected. Data may change after validation process.
- \*All compliance parameters were within the Saskatchewan Ambient Air Quality Standards.
- \*All compliance parameters were more than 90% operational.
- \*1 hour of data was flagged as "analyzer failure" for NO/NO<sub>2</sub>/NO<sub>x</sub> due to negative data spike caused by analyzer turning back on.
- \*4 hours of data was flagged as "power failure" for the whole station due to a power issue on March 20.
- \*Routine quarterly calibrations were completed on March 19, 2024.

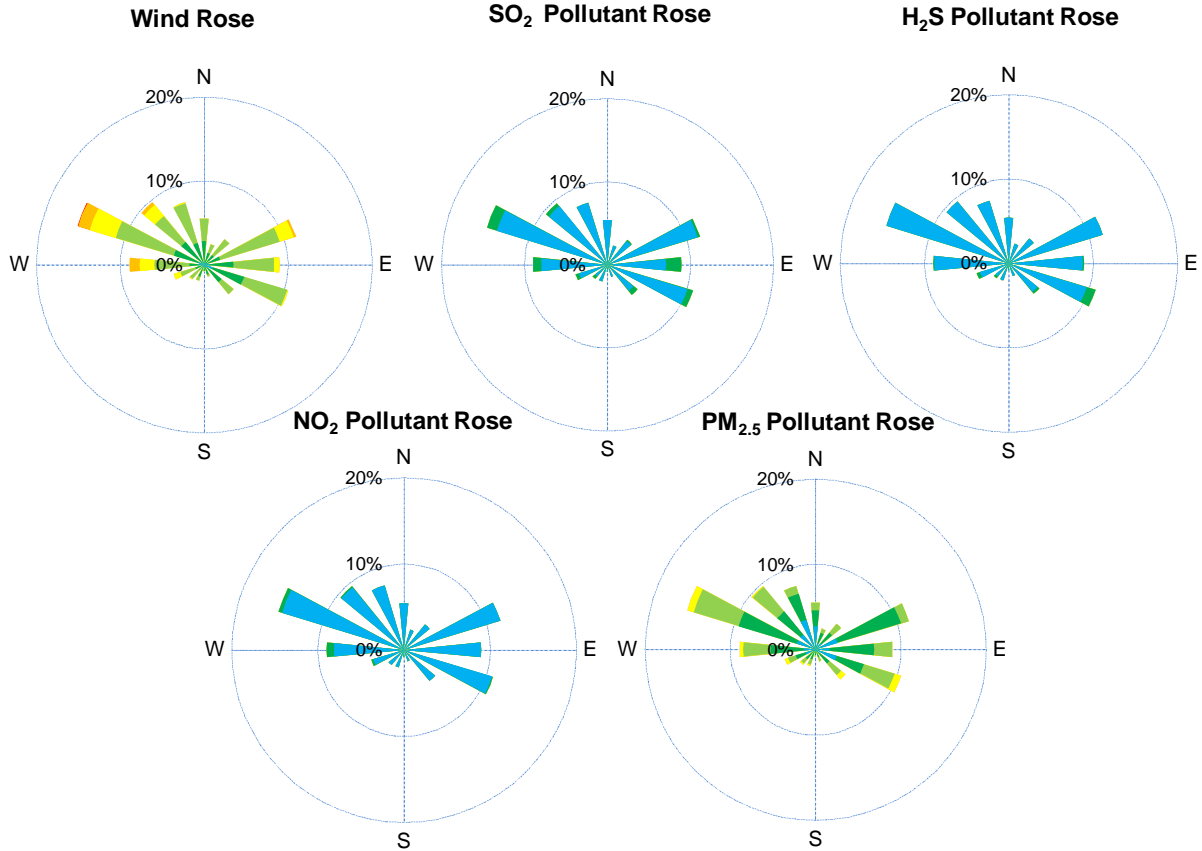
# SESAA Oxbow Station - March 2024 Summary Report

Pollutants		Month Records		24-Hour Records				1-Hour Records			
Name	Conc. Unit	Avg. Conc.	Uptime	Maximum		SAAQS Standard	Exceed Days	Maximum		SAAQS Standard	Exceed Hours
				Conc.	Time			Conc.	Time		
NO	ppb	0.2	99.9%	0.5	Mar-11	-	-	2.5	Mar-08 12:00	-	-
NO <sub>2</sub>	ppb	2.0	99.9%	4.8	Mar-8	106	0	9.3	Mar-09 00:00	159	0
NO <sub>x</sub>	ppb	2.0	99.9%	5.1	Mar-8	-	-	10.0	Mar-09 00:00	-	-
SO <sub>2</sub>	ppb	0.3	100.0%	1.2	Mar-5	48	0	4.1	Mar-05 12:00	172	0
H <sub>2</sub> S	ppb	0.2	100.0%	1.0	Mar-9	3.6	0	1.4	Mar-09 10:00	11	0
PM <sub>2.5</sub>	ug/m3	3.8	100.0%	9.6	Mar-9	28	0	18.1	Mar-09 20:00	-	-

SAAQS: Saskatchewan Ambient Air Quality Standards



# SESAA Oxbow Station - March 2024 Summary Report



Parameters	Unit	Color Code for Wind Spd & Pollutant Conc. Class					
Wind Speed	m/s	0.3 ≤ WS < 1.4	1.4 ≤ WS < 3.1	3.1 ≤ WS < 7.8	7.8 ≤ WS < 10.8	10.8 ≤ WS < 13.6	WS ≥ 13.6
SO <sub>2</sub>	ppb	0 ≤ C < 1	1 ≤ C < 5	5 ≤ C < 10	10 ≤ C < 57	57 ≤ C < 172	C ≥ 172
NO <sub>2</sub>	ppb	0 ≤ C < 5	5 ≤ C < 15	15 ≤ C < 30	30 ≤ C < 100	100 ≤ C < 212	C ≥ 212
H <sub>2</sub> S	ppb	0 ≤ C < 1	1 ≤ C < 3.6	3.6 ≤ C < 5	5 ≤ C < 8	8 ≤ C < 10.8	C ≥ 10.8
PM <sub>2.5</sub>	ug/m <sup>3</sup>	0 ≤ C < 2	2 ≤ C < 4	4 ≤ C < 10	10 ≤ C < 20	20 ≤ C < 30	C ≥ 30

## Monthly Update

\*All data has been slope, intercept, and baseline corrected. Data may change after validation process.

\*All compliance parameters were within the Saskatchewan Ambient Air Quality Standards.

\*All compliance parameters were greater than 90% operational.

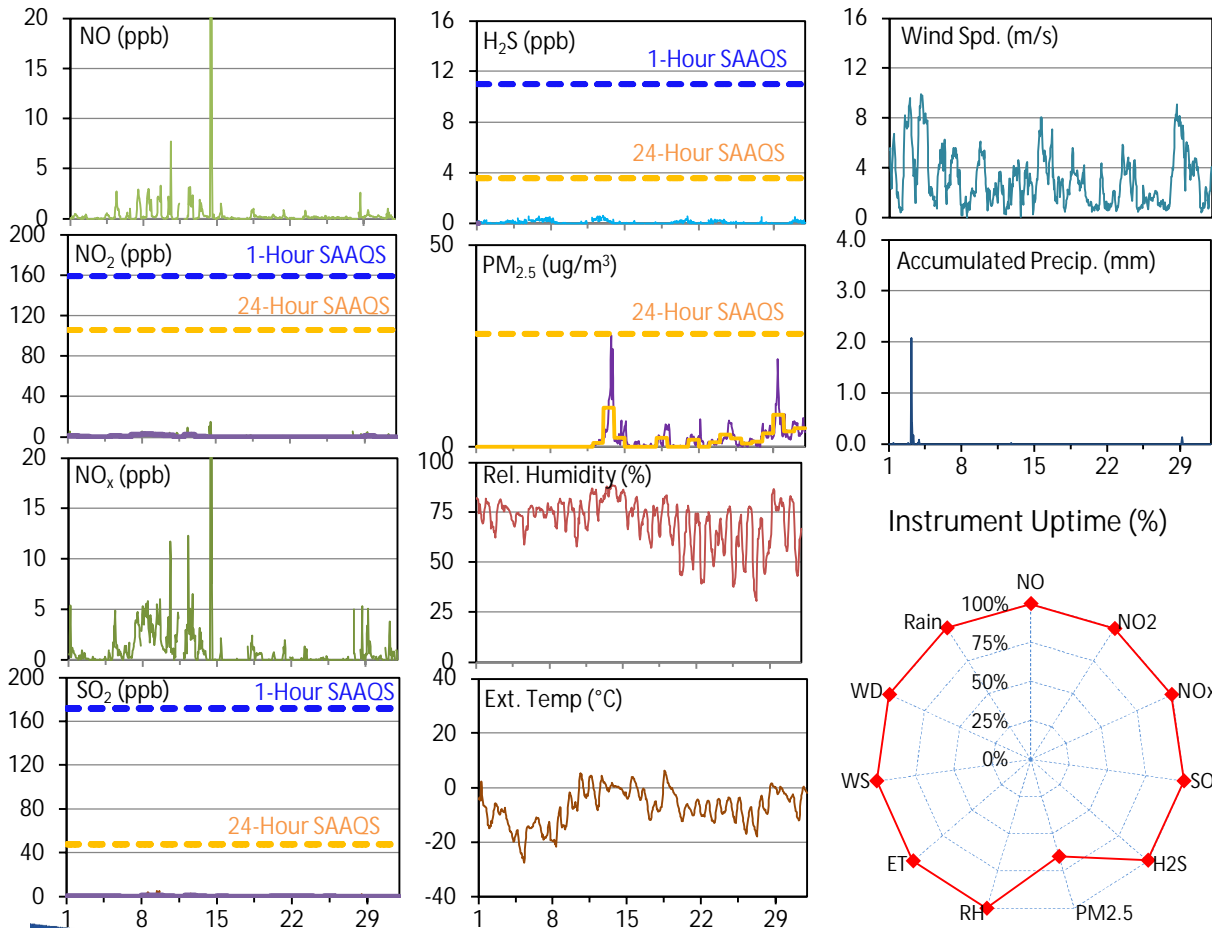
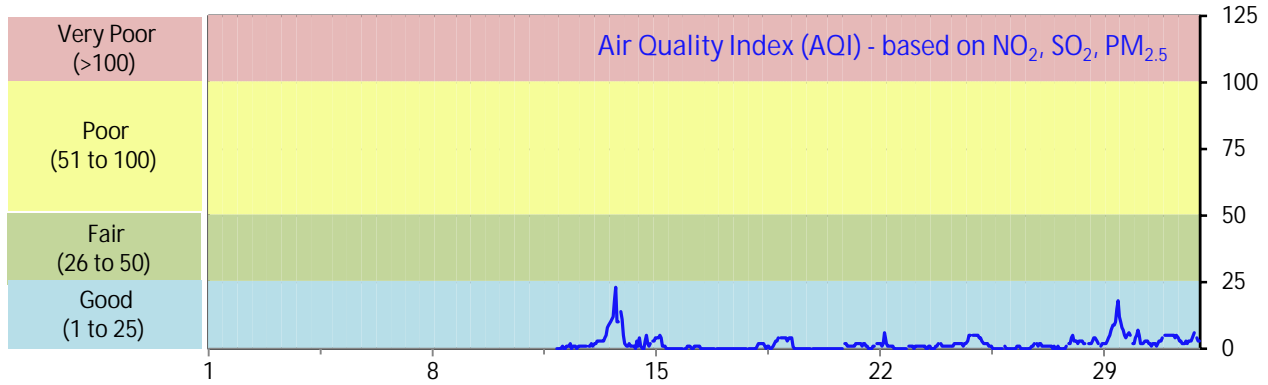
\*1 hour of data flagged as "analyzer failure" for NO/NO<sub>2</sub>/NO<sub>x</sub> due to a spike in data.

\*Routine quarterly calibrations were completed on March 27, 2024.

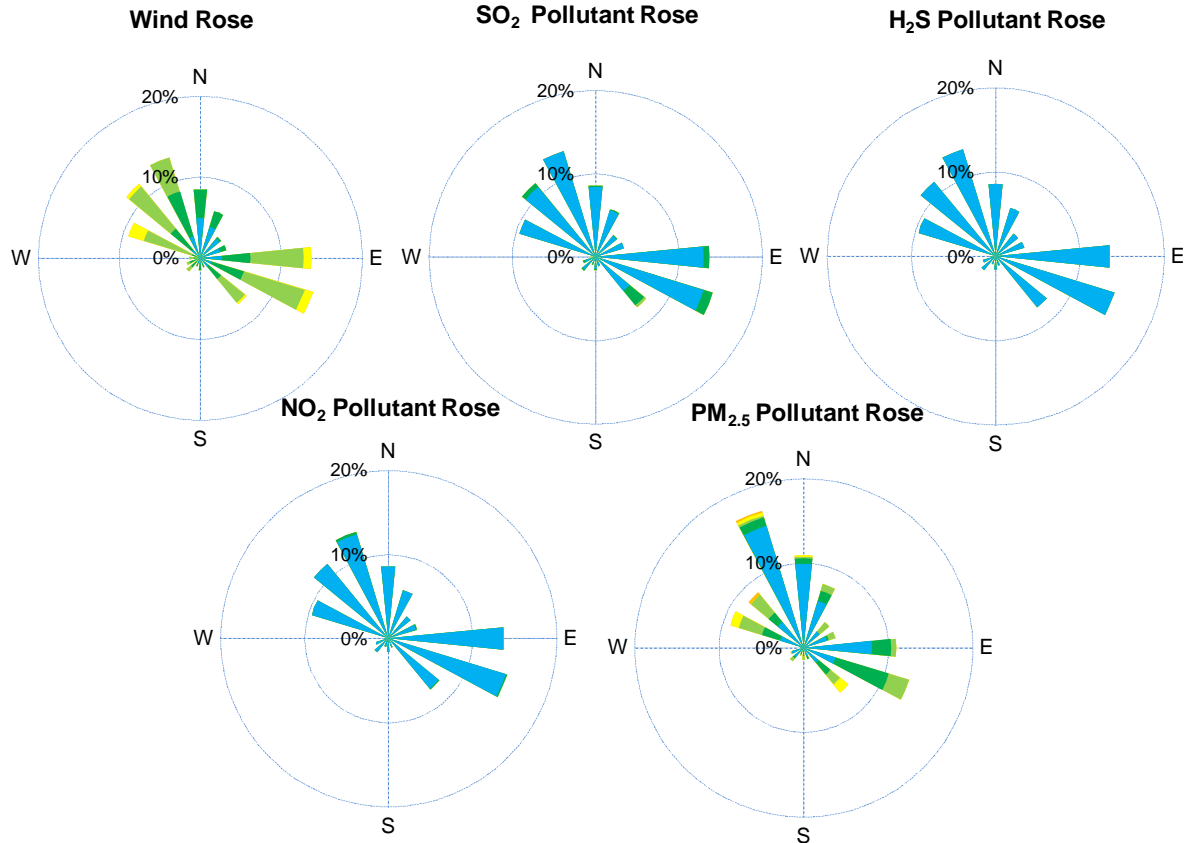
# SESAA Stoughton Station - March 2024 Summary Report

Pollutants		Month Records		24-Hour Records				1-Hour Records			
Name	Conc. Unit	Avg. Conc.	Uptime	Maximum		SAAQS Standard	Exceed Days	Maximum		SAAQS Standard	Exceed Hours
				Conc.	Time			Conc.	Time		
NO	ppb	0.4	99.7%	3.2	Mar-14	-	-	34.2	Mar-14 11:00	-	-
NO <sub>2</sub>	ppb	0.6	99.7%	3.0	Mar-8	106	0	14.9	Mar-14 11:00	159	0
NO <sub>x</sub>	ppb	0.9	99.7%	4.0	Mar-8	-	-	49.1	Mar-14 11:00	-	-
SO <sub>2</sub>	ppb	0.3	99.6%	1.6	Mar-9	48	0	5.2	Mar-09 15:00	172	0
H <sub>2</sub> S	ppb	0.1	99.6%	0.4	Mar-12	3.6	0	0.6	Mar-06 21:00	11	0
PM <sub>2.5</sub>	ug/m3	2.3	65.2%	9.7	Mar-13	28	0	27.6	Mar-13 17:00	-	-

SAAQS: Saskatchewan Ambient Air Quality Standards



# SESAA Stoughton Station - March 2024 Summary Report



Parameters	Unit	Color Code for Wind Spd & Pollutant Conc. Class						
Wind Speed	m/s	0.3 ≤ WS < 1.4	1.4 ≤ WS < 3.1	3.1 ≤ WS < 7.8	7.8 ≤ WS < 10.8	10.8 ≤ WS < 13.6	WS ≥ 13.6	
SO <sub>2</sub>	ppb	0 ≤ C < 1	1 ≤ C < 5	5 ≤ C < 10	10 ≤ C < 57	57 ≤ C < 172	C ≥ 172	
NO <sub>2</sub>	ppb	0 ≤ C < 5	5 ≤ C < 15	15 ≤ C < 30	30 ≤ C < 100	100 ≤ C < 212	C ≥ 212	
H <sub>2</sub> S	ppb	0 ≤ C < 1	1 ≤ C < 3.6	3.6 ≤ C < 5	5 ≤ C < 8	8 ≤ C < 10.8	C ≥ 10.8	
PM <sub>2.5</sub>	ug/m <sup>3</sup>	0 ≤ C < 2	2 ≤ C < 4	4 ≤ C < 10	10 ≤ C < 20	20 ≤ C < 30	C ≥ 30	

## Monthly Update

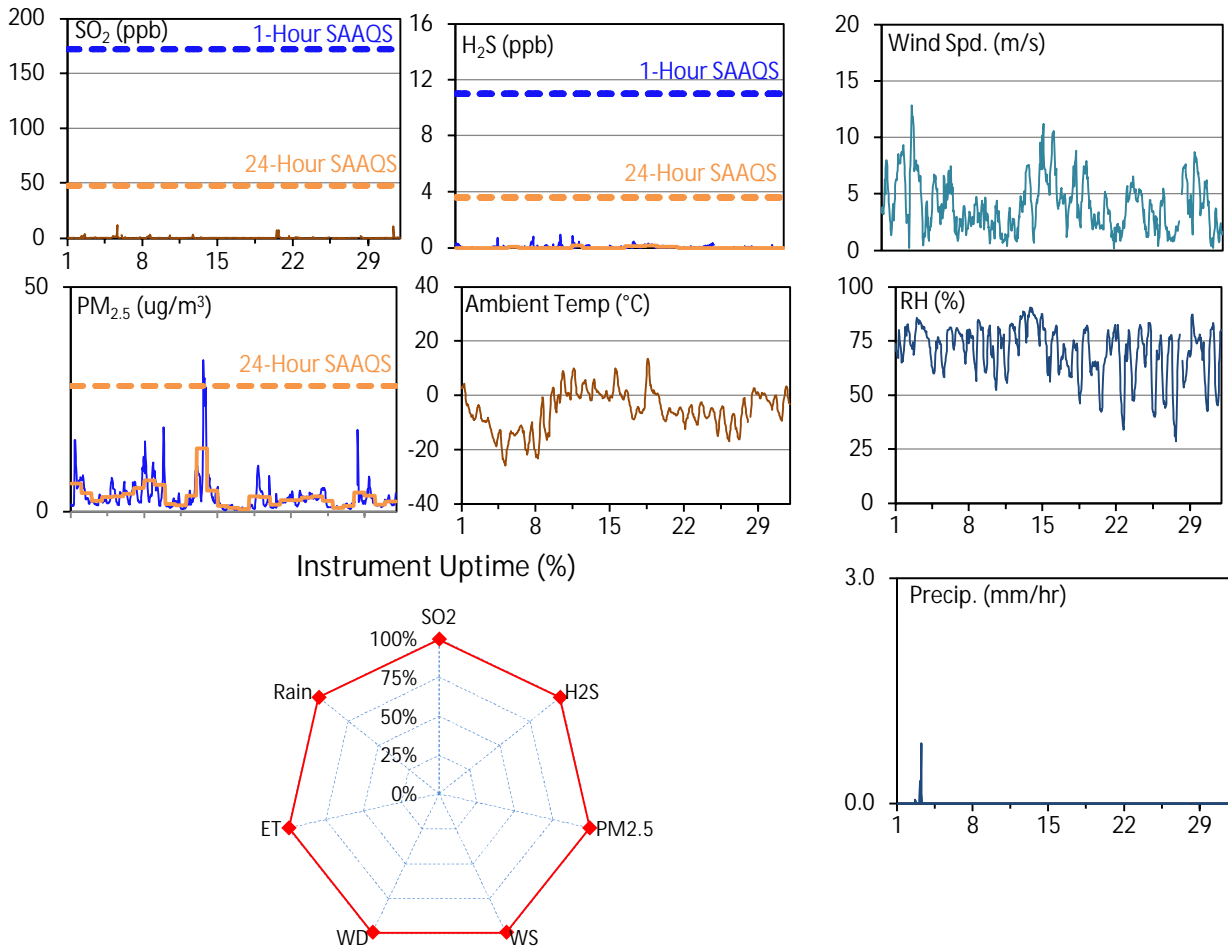
- \*All data has been slope, intercept, and baseline corrected. Data may change after validation process.
- \*All compliance parameters were within the Saskatchewan Ambient Air Quality Standards.
- \*All compliance parameters were above 90% operational, except PM2.5.
- \*259 hours of data flagged as "analyzer failure" for PM2.5 due to unusual spikes and plateaus from March 1 to March 11.
- \*1 hour of data flagged as "analyzer failure" for H2S and SO2 due to flatlined data.
- \*2 hours of data flagged as "maintenance" for H2S, NO/NO2/NOx and SO2 due to manual spans triggered on March 28.
- \*Routine quarterly calibrations were completed on March 11, 2024.



## SESAA Torquay Station - March 2024 Summary Report

Pollutants		Month Records		24-Hour Records				1-Hour Records			
Name	Conc. Unit	Avg. Conc.	Uptime	Maximum		SAAQS Standard	Exceed Days	Maximum		SAAQS Standard	Exceed Hours
				Conc.	Time			Conc.	Time		
SO <sub>2</sub>	ppb	0.2	99.3%	1.3	Mar-5	48	0	12.0	Mar-05 16:00	172	0
H <sub>2</sub> S	ppb	<0.1	99.3%	0.2	Mar-12	3.6	0	0.9	Mar-10 22:00	11	0
PM <sub>2.5</sub>	ug/m3	3.3	99.3%	14.1	Mar-13	28	0	33.8	Mar-13 15:00	-	-

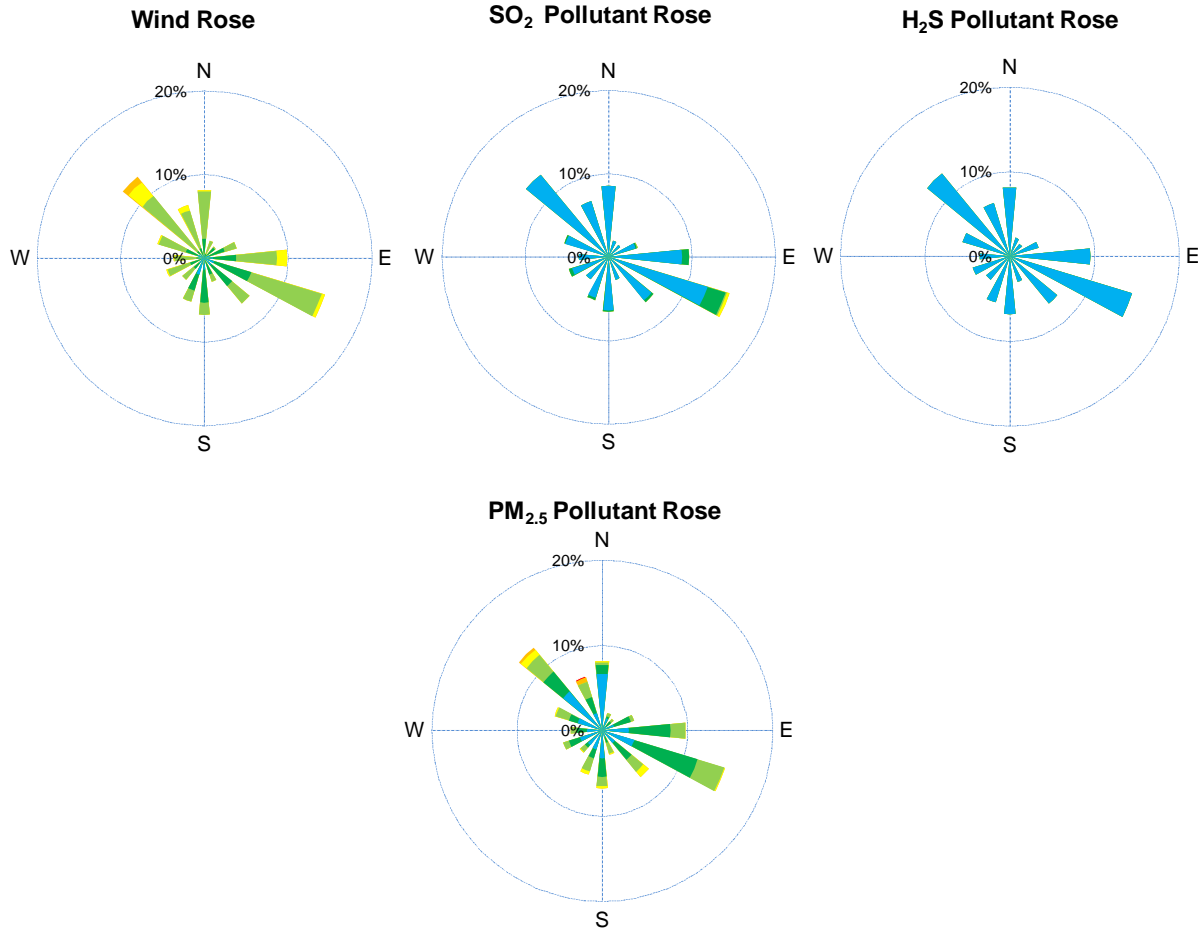
SAAQS: Saskatchewan Ambient Air Quality Standards



### Monthly Update

- \*All data has been slope, intercept, and baseline corrected. Data may change after validation process.
- \*All compliance parameters were within the Saskatchewan Ambient Air Quality Standards.
- \*All compliance parameters had greater than 90% operational uptime.
- \*5 hours of data for the whole station flagged as "power failure" due to power issues causing flatlined data.
- \*Routine quarterly calibrations were completed on March 25, 2024.

# SESAA Torquay Station - March 2024 Summary Report

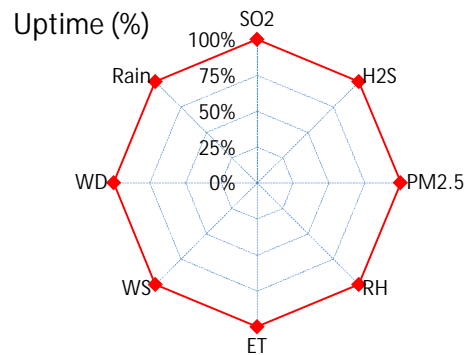
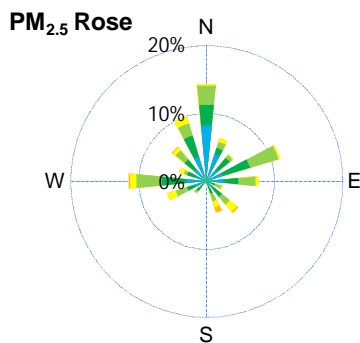
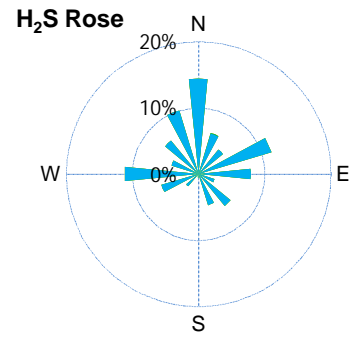
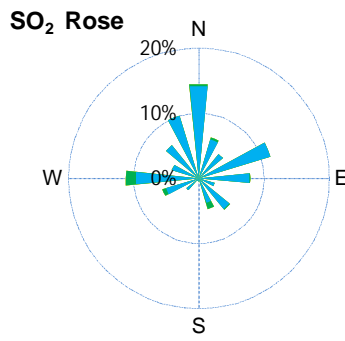
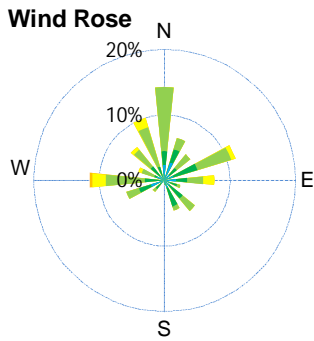
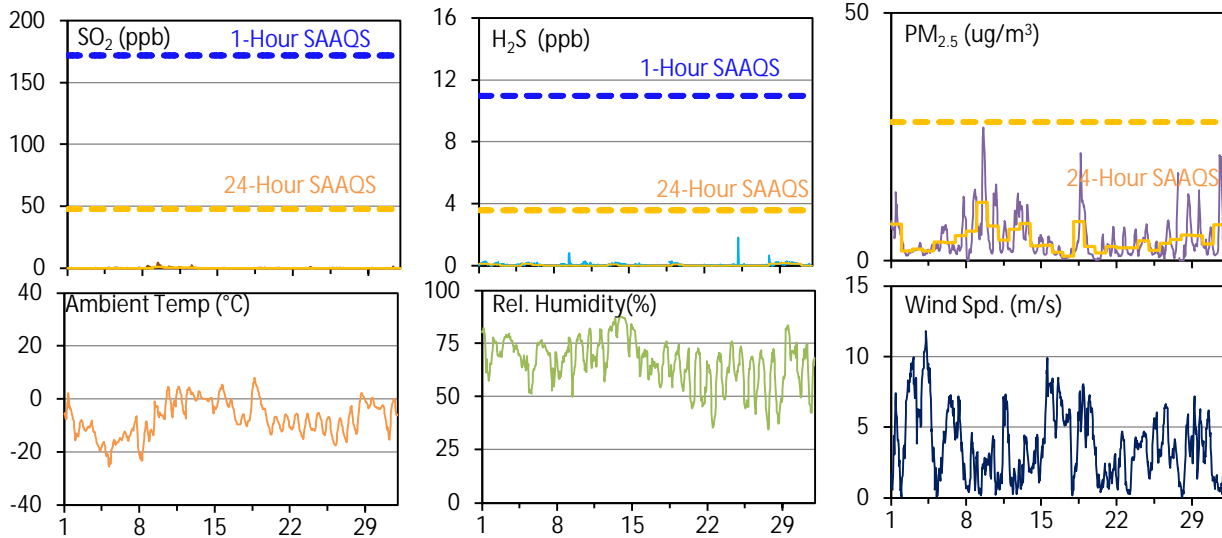


Parameters	Unit	Color Code for Wind Spd & Pollutant Conc. Class						
		0.3 ≤ WS < 1.4	1.4 ≤ WS < 3.1	3.1 ≤ WS < 7.8	7.8 ≤ WS < 10.8	10.8 ≤ WS < 13.6	WS ≥ 13.6	
SO <sub>2</sub>	ppb	0 ≤ C < 1	1 ≤ C < 5	5 ≤ C < 10	10 ≤ C < 57	57 ≤ C < 172	C ≥ 172	
NO <sub>2</sub>	ppb	0 ≤ C < 5	5 ≤ C < 15	15 ≤ C < 30	30 ≤ C < 100	100 ≤ C < 212	C ≥ 212	
O <sub>3</sub>	ppb	0 ≤ C < 10	10 ≤ C < 20	20 ≤ C < 40	40 ≤ C < 60	60 ≤ C < 82	C ≥ 82	
H <sub>2</sub> S	ppb	0 ≤ C < 1	1 ≤ C < 3.6	3.6 ≤ C < 5	5 ≤ C < 8	8 ≤ C < 10.8	C ≥ 10.8	
PM <sub>2.5</sub>	ug/m <sup>3</sup>	0 ≤ C < 2	2 ≤ C < 4	4 ≤ C < 10	10 ≤ C < 20	20 ≤ C < 30	C ≥ 30	

# SESAA Wauchope Station - March 2024 Summary Report

Pollutants		Month Records		24-Hour Records				1-Hour Records			
Name	Conc. Unit	Avg. Conc.	Uptime	Maximum		SAAQS Objective	Exceed Days	Maximum		SAAQS Objective	Exceed Hours
				Conc.	Time			Conc.	Time		
SO <sub>2</sub>	ppb	0.2	100.0%	1.3	Mar-9	48	0	4.6	Mar-09 11:00	172	0
H <sub>2</sub> S	ppb	0.1	100.0%	0.1	Mar-28	3.6	0	1.8	Mar-25 03:00	11	0
PM <sub>2.5</sub>	ug/m3	4.2	99.9%	11.7	Mar-9	28	0	26.9	Mar-09 14:00	-	-

SAAQS: Saskatchewan Ambient Air Quality Standards



# SESAA Wauchope Station - March 2024 Summary Report

Parameters	Unit	Color Code for Wind Spd & Pollutant Conc. Class					
Wind Speed	m/s	0.3 ≤ WS < 1.4	1.4 ≤ WS < 3.1	3.1 ≤ WS < 7.8	7.8 ≤ WS < 10.8	10.8 ≤ WS < 13.6	WS ≥ 13.6
SO <sub>2</sub>	ppb	0 ≤ C < 1	1 ≤ C < 5	5 ≤ C < 10	10 ≤ C < 57	57 ≤ C < 172	C ≥ 172
H <sub>2</sub> S	ppb	0 ≤ C < 1	1 ≤ C < 3.6	3.6 ≤ C < 5	5 ≤ C < 8	8 ≤ C < 10.8	C ≥ 10.8
PM <sub>2.5</sub>	ug/m <sup>3</sup>	0 ≤ C < 2	2 ≤ C < 4	4 ≤ C < 10	10 ≤ C < 20	20 ≤ C < 30	C ≥ 30

## Monthly Update

\*All data has been slope, intercept, and baseline corrected. Data may change after validation process.

\*All compliance parameters were within the Saskatchewan Ambient Air Quality Standards.

\*All compliance parameters were greater than 90% operational.

\*1 hour of data for PM<sub>2.5</sub> was flagged as "analyzer failure" due a spike in data.

\*Non-routine calibrations were completed on March 18, 2024 due to SO<sub>2</sub> and H<sub>2</sub>S spans being out of range.

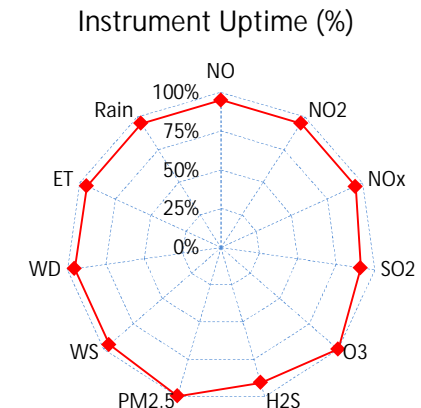
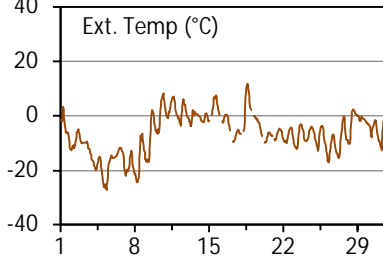
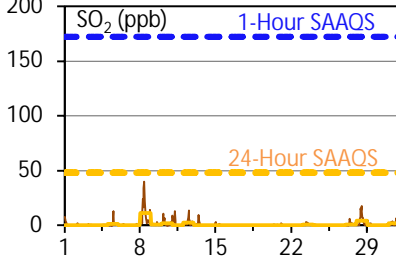
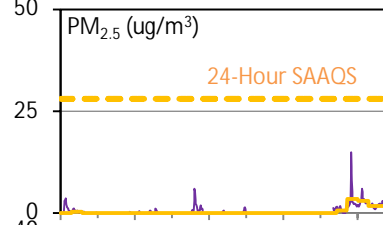
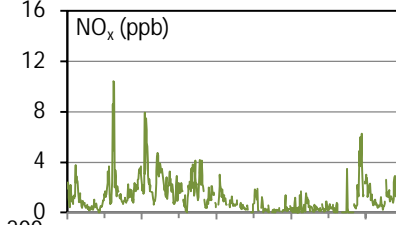
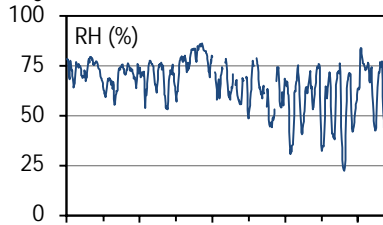
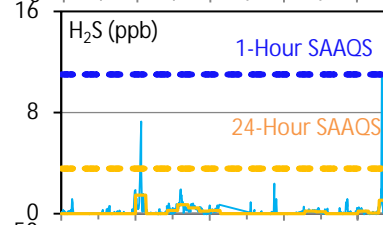
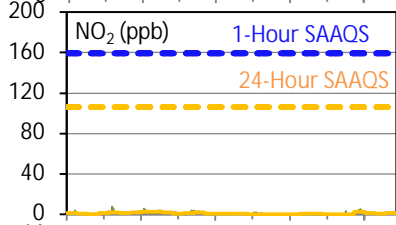
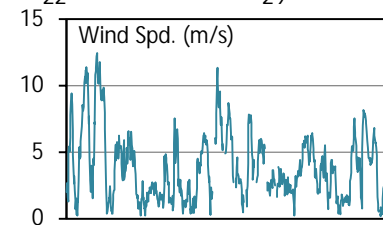
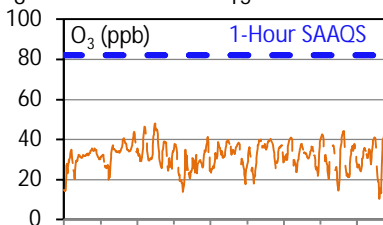
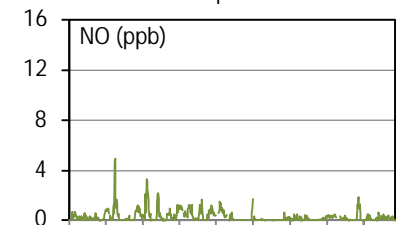
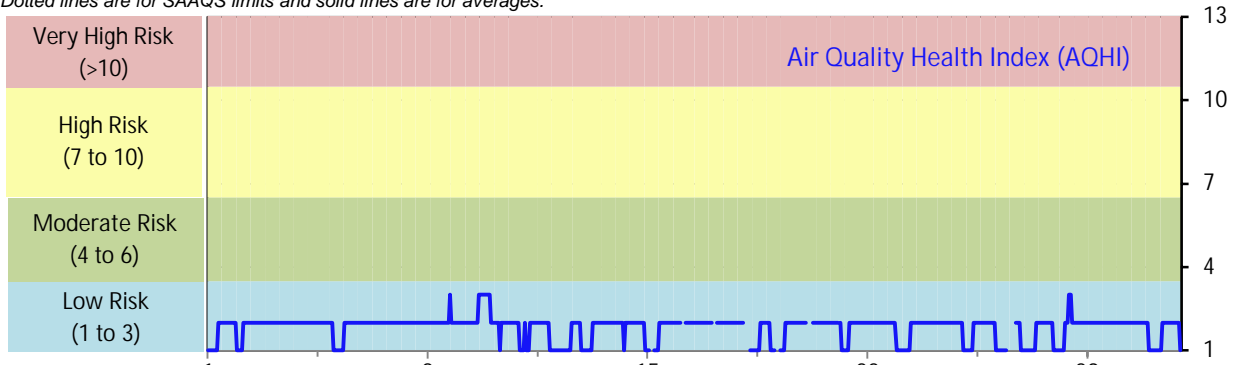
# SESAA Weyburn Station - March 2024 Summary Report

Pollutants		Month Records		24-Hour Records				1-Hour Records			
Name	Conc. Unit	Avg. Conc.	Uptime	Maximum		SAAQS Standard	Exceed Days	Maximum		SAAQS Standard	Exceed Hours
				Conc.	Time			Conc.	Time		
NO	ppb	0.3	94.9%	0.9	Mar-8	-	-	4.9	Mar-05 09:00	-	-
NO <sub>2</sub>	ppb	1.0	94.9%	2.3	Mar-8	106	0	7.2	Mar-05 06:00	159	0
NO <sub>x</sub>	ppb	1.3	94.9%	3.2	Mar-8	-	-	10.4	Mar-05 08:00	-	-
SO <sub>2</sub>	ppb	1.3	90.7%	11.0	Mar-8	48	0	39.6	Mar-08 09:00	172	0
O <sub>3</sub>	ppb	31.9	99.7%	37.7	Mar-20	-	-	48.0	Mar-09 16:00	82	0
H <sub>2</sub> S	ppb	0.3	90.7%	1.5	Mar-8	3.6	0	11.0	Mar-31 06:00	11	0
PM <sub>2.5</sub>	ug/m3	0.5	99.7%	3.4	Mar-28	28	0	14.9	Mar-28 09:00	-	-

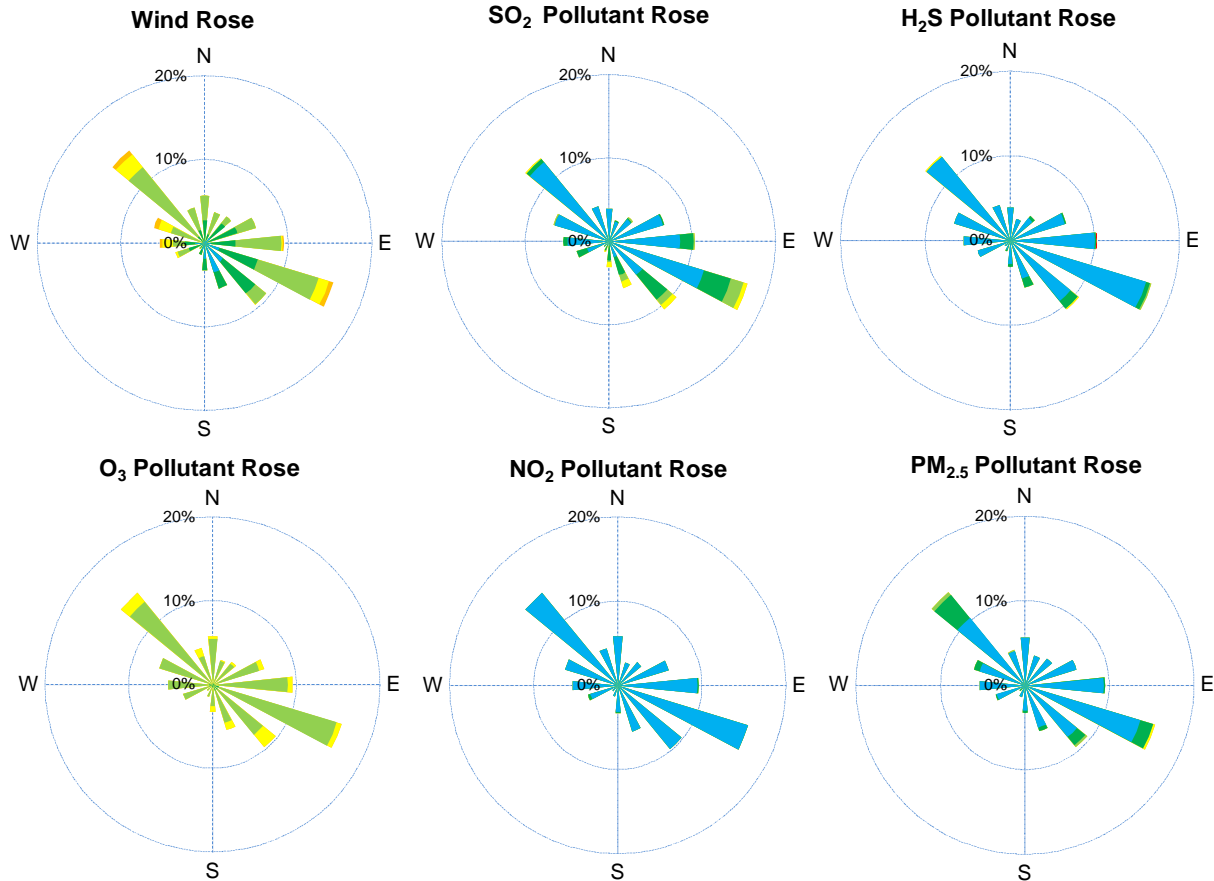
SAAQs: Saskatchewan Ambient Air Quality Standards

\* Air Quality Standard refers to Saskatchewan Ambient Air Quality Standards (SAAQs).

\* Dotted lines are for SAAQS limits and solid lines are for averages.



# SESAA Weyburn Station - March 2024 Summary Report



Parameters	Unit	Color Code for Wind Spd & Pollutant Conc. Class						
Wind Speed	m/s	$0.3 \leq WS < 1.4$	$1.4 \leq WS < 3.1$	$3.1 \leq WS < 7.8$	$7.8 \leq WS < 10.8$	$10.8 \leq WS < 13.6$	$WS \geq 13.6$	
SO <sub>2</sub>	ppb	$0 \leq C < 1$	$1 \leq C < 5$	$5 \leq C < 10$	$10 \leq C < 57$	$57 \leq C < 172$	$C \geq 172$	
NO <sub>2</sub>	ppb	$0 \leq C < 5$	$5 \leq C < 15$	$15 \leq C < 30$	$30 \leq C < 100$	$100 \leq C < 212$	$C \geq 212$	
O <sub>3</sub>	ppb	$0 \leq C < 10$	$10 \leq C < 20$	$20 \leq C < 40$	$40 \leq C < 60$	$60 \leq C < 82$	$C \geq 82$	
H <sub>2</sub> S	ppb	$0 \leq C < 1$	$1 \leq C < 3.6$	$3.6 \leq C < 5$	$5 \leq C < 8$	$8 \leq C < 10.8$	$C \geq 10.8$	
PM <sub>2.5</sub>	ug/m <sup>3</sup>	$0 \leq C < 2$	$2 \leq C < 4$	$4 \leq C < 10$	$10 \leq C < 20$	$20 \leq C < 30$	$C \geq 30$	

## Monthly Update

\*All data has been slope, intercept, and baseline corrected. Data may change after validation process.

\*All compliance parameters were within the Saskatchewan Ambient Air Quality Standards.

\*All compliance parameters were above 90% operational.

\*2 hours of data for all parameters was flagged as "power failure" due to power issues causing flatlines and spikes.

\*33 - 67 hours of data for the whole station was flagged as "analyzer failure" due to data spikes and plateaus from Mar 15 to Mar 20.

\*Routine calibrations occurred on March 26, 2024.