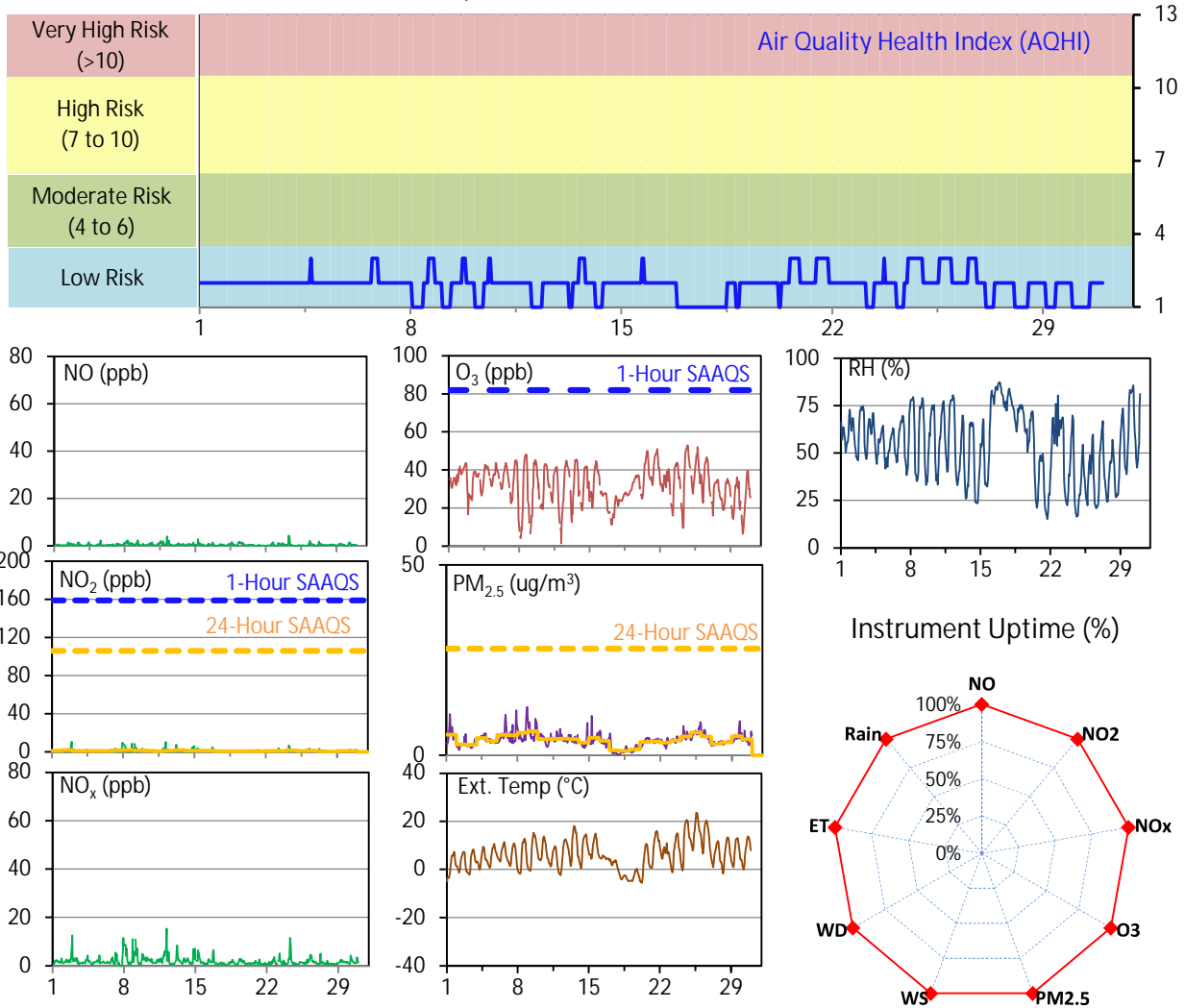


# SESAA Esterhazy Station - April 2024 Summary Report

Pollutants		Month Records		24-Hour Records				1-Hour Records			
Name	Conc. Unit	Avg. Conc.	Uptime	Maximum		SAAQS Standard	Exceed Days	Maximum		SAAQS Standard	Exceed Hours
				Conc.	Time			Conc.	Time		
NO	ppb	0.4	100.0%	0.9	Apr-8	-	-	4.3	Apr-24 06:00	-	-
NO <sub>2</sub>	ppb	1.1	100.0%	1.9	Apr-8	106	0	10.6	Apr-02 22:00	159	0
NO <sub>x</sub>	ppb	1.9	100.0%	3.8	Apr-8	-	-	15.5	Apr-12 04:00	-	-
O <sub>3</sub>	ppb	32.2	100.0%	41.8	Apr-21	-	-	52.9	Apr-24 17:00	82	0
PM <sub>2.5</sub>	ug/m3	4.0	100.0%	6.3	Apr-9	28	0	12.7	Apr-08 22:00	-	-

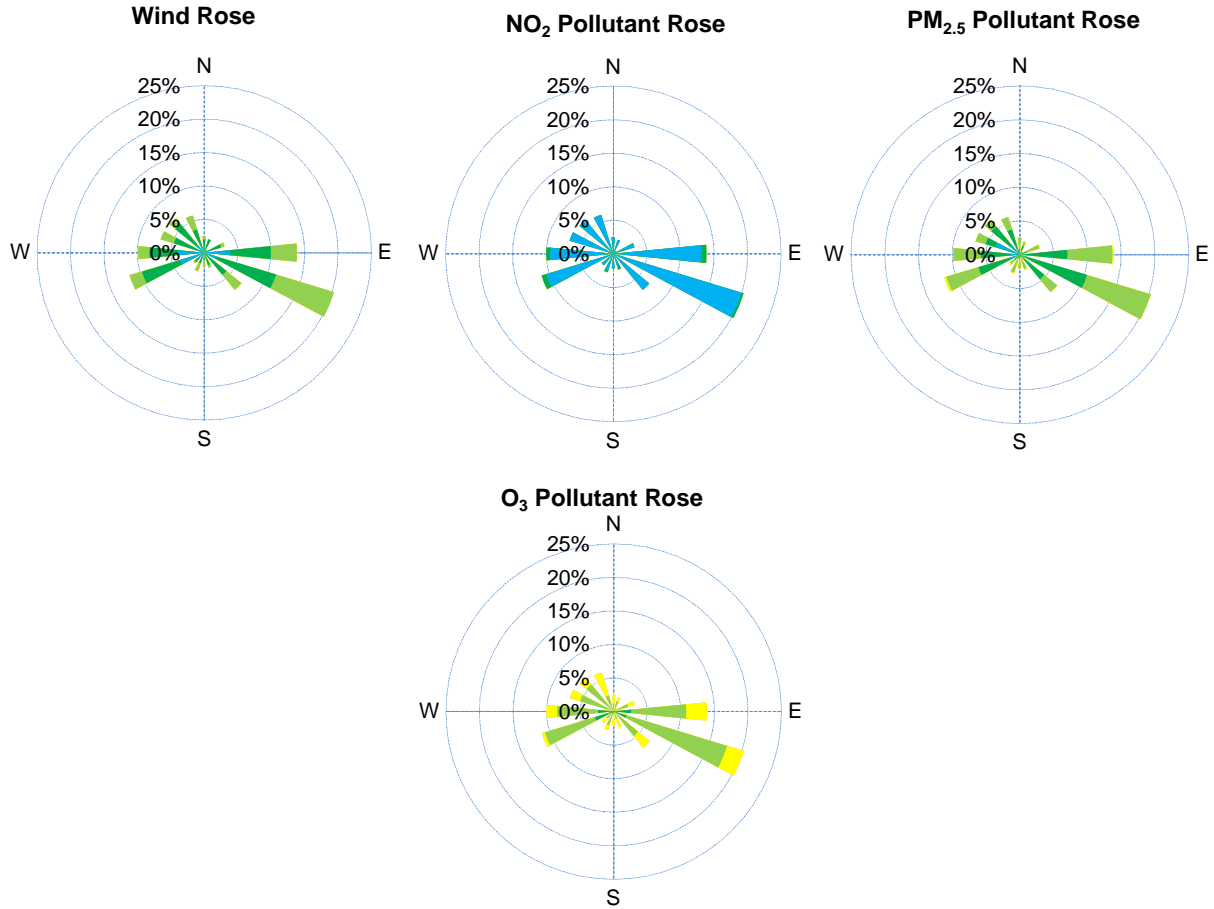
SAAQS: Saskatchewan Ambient Air Quality Standards



## Monthly Update

- \*All data has been slope, intercept, and baseline corrected. Data may change after validation process.
- \*All compliance parameters were within the Saskatchewan Ambient Air Quality Standards.
- \*All compliance parameters were above 90% operational.

# SESAA Esterhazy Station - April 2024 Summary Report

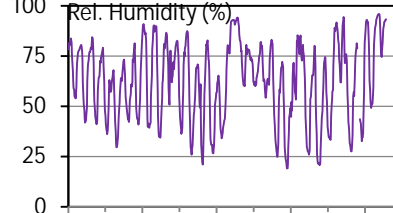
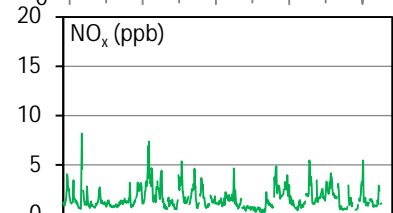
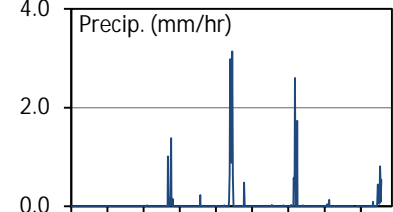
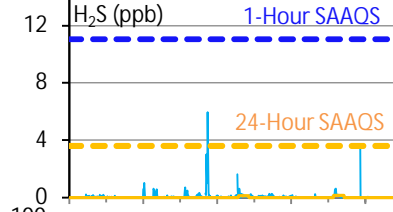
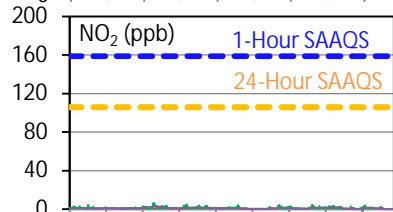
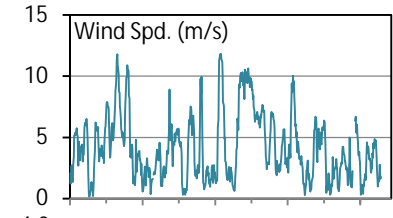
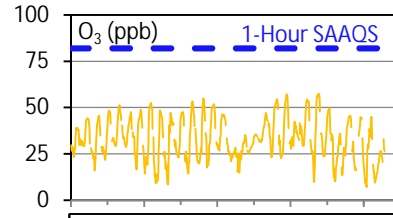
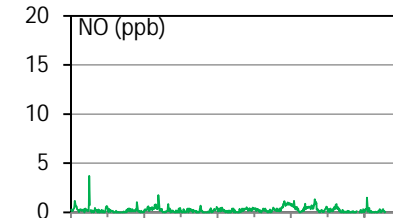
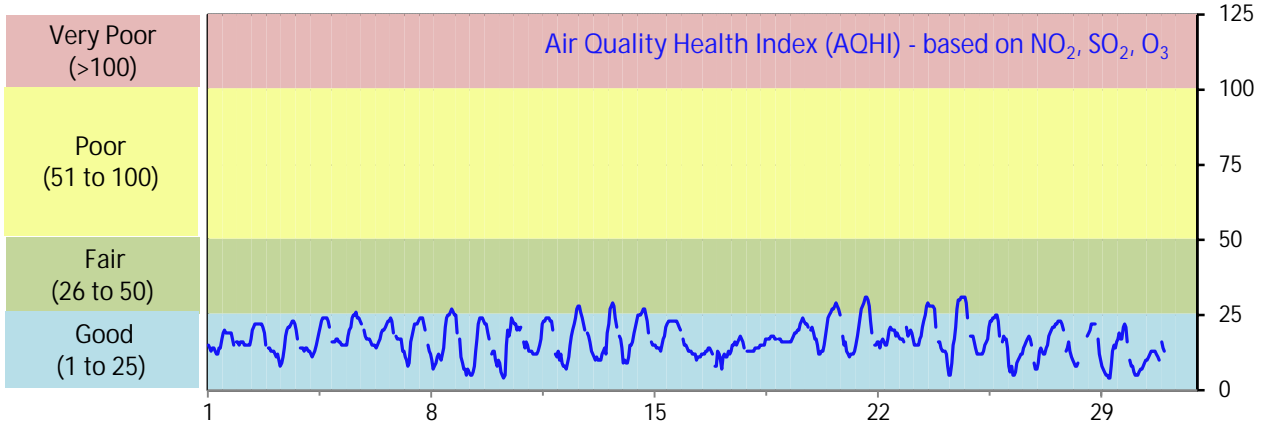


Parameters	Unit	Color Code for Wind Spd & Pollutant Conc. Class					
Wind Speed	m/s	$0.3 \leq WS < 1.4$	$1.4 \leq WS < 3.1$	$3.1 \leq WS < 7.8$	$7.8 \leq WS < 10.8$	$10.8 \leq WS < 13.6$	$WS \geq 13.6$
NO <sub>2</sub>	ppb	$0 \leq C < 5$	$5 \leq C < 15$	$15 \leq C < 30$	$30 \leq C < 100$	$100 \leq C < 212$	$C \geq 212$
PM <sub>2.5</sub>	ug/m <sup>3</sup>	$0 \leq C < 2$	$2 \leq C < 4$	$4 \leq C < 10$	$10 \leq C < 20$	$20 \leq C < 30$	$C \geq 30$
O <sub>3</sub>	ppb	$0 \leq C < 10$	$10 \leq C < 20$	$20 \leq C < 40$	$40 \leq C < 60$	$60 \leq C < 82$	$C \geq 82$

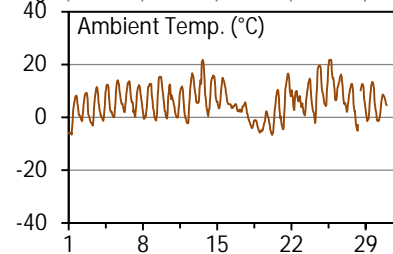
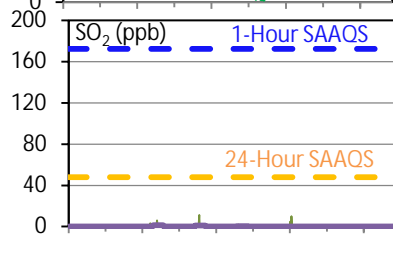
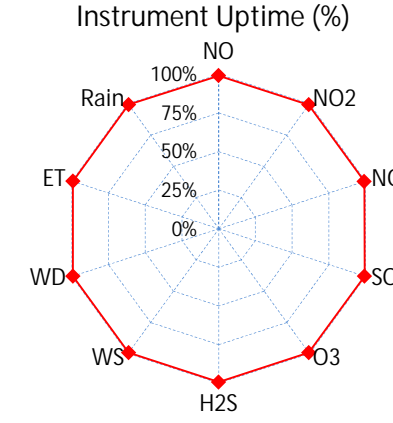
# SESAA Glen Ewen Station - April 2024 Summary Report

Pollutants		Month Records		24-Hour Records				1-Hour Records			
Name	Conc. Unit	Avg. Conc.	Uptime	Maximum		SAAQS Standard	Exceed Days	Maximum		SAAQS Standard	Exceed Hours
				Conc.	Time			Conc.	Time		
NO	ppb	0.2	99.2%	0.7	Apr-21	-	-	3.7	Apr-02 18:00	-	-
NO <sub>2</sub>	ppb	1.3	99.2%	2.7	Apr-9	106	0	6.6	Apr-09 02:00	159	0
NO <sub>x</sub>	ppb	1.6	99.2%	3.0	Apr-9	-	-	8.2	Apr-02 18:00	-	-
SO <sub>2</sub>	ppb	0.2	99.3%	1.3	Apr-9	48	0	11.4	Apr-13 09:00	172	0
O <sub>3</sub>	ppb	33.1	99.3%	41.1	Apr-23	-	-	57.4	Apr-24 17:00	82	0
H <sub>2</sub> S	ppb	0.1	99.3%	0.2	Apr-26	3.6	0	6.0	Apr-14 02:00	11	0

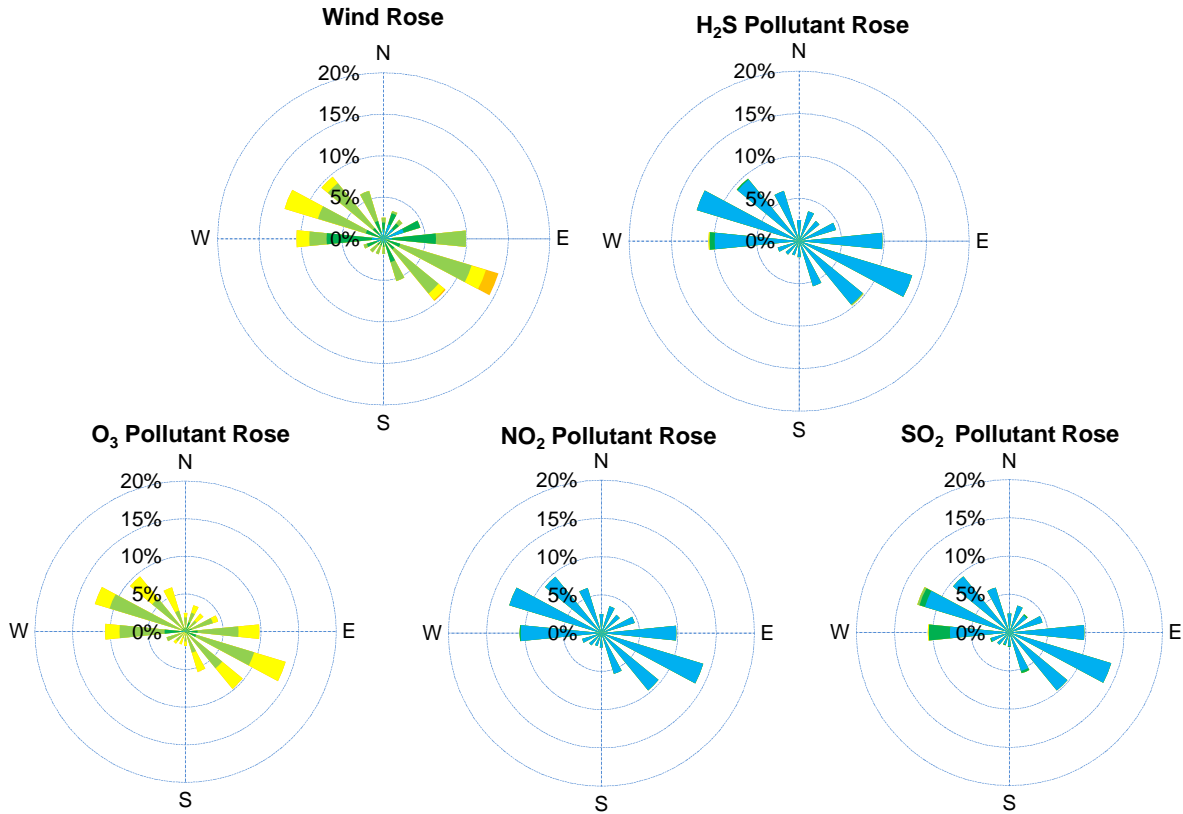
SAAQS: Saskatchewan Ambient Air Quality Standards



Instrument Uptime (%)



# SESAA Glen Ewen Station - April 2024 Summary Report



Parameters	Unit	Color Code for Wind Spd & Pollutant Conc. Class						
Wind Speed	m/s	$0.3 \leq WS < 1.4$	$1.4 \leq WS < 3.1$	$3.1 \leq WS < 7.8$	$7.8 \leq WS < 10.8$	$10.8 \leq WS < 13.6$	$WS \geq 13.6$	
SO <sub>2</sub>	ppb	$0 \leq C < 1$	$1 \leq C < 5$	$5 \leq C < 10$	$10 \leq C < 57$	$57 \leq C < 172$	$C \geq 172$	
NO <sub>2</sub>	ppb	$0 \leq C < 5$	$5 \leq C < 15$	$15 \leq C < 30$	$30 \leq C < 100$	$100 \leq C < 212$	$C \geq 212$	
O <sub>3</sub>	ppb	$0 \leq C < 10$	$10 \leq C < 20$	$20 \leq C < 40$	$40 \leq C < 60$	$60 \leq C < 82$	$C \geq 82$	
H <sub>2</sub> S	ppb	$0 \leq C < 1$	$1 \leq C < 3.6$	$3.6 \leq C < 5$	$5 \leq C < 8$	$8 \leq C < 10.8$	$C \geq 10.8$	

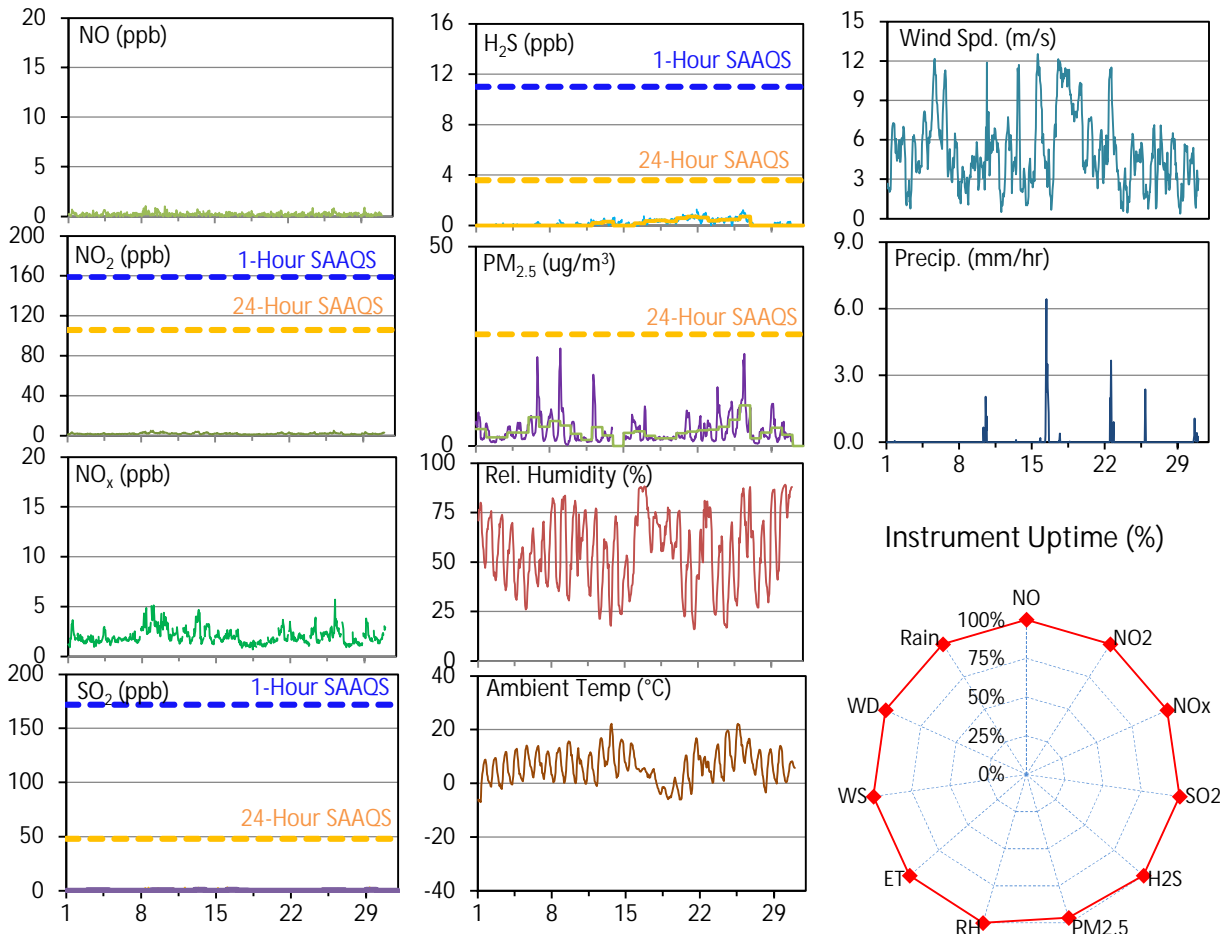
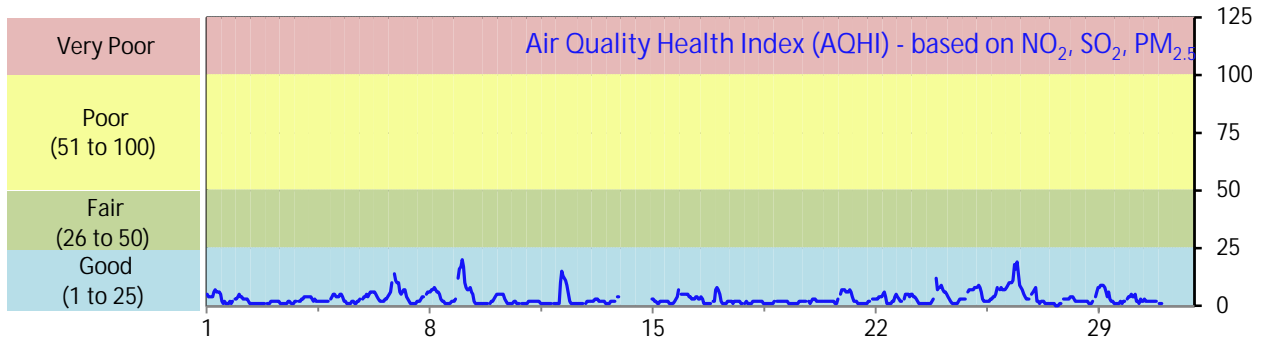
## Monthly Update

- \*All data has been slope, intercept, and baseline corrected. Data may change after validation process.
- \*All compliance parameters were within the Saskatchewan Ambient Air Quality Standards.
- \*All compliance parameters were more than 90% operational.
- \*5-6 hours of data flagged as "power failure" for the whole station due to power issues on April 28.

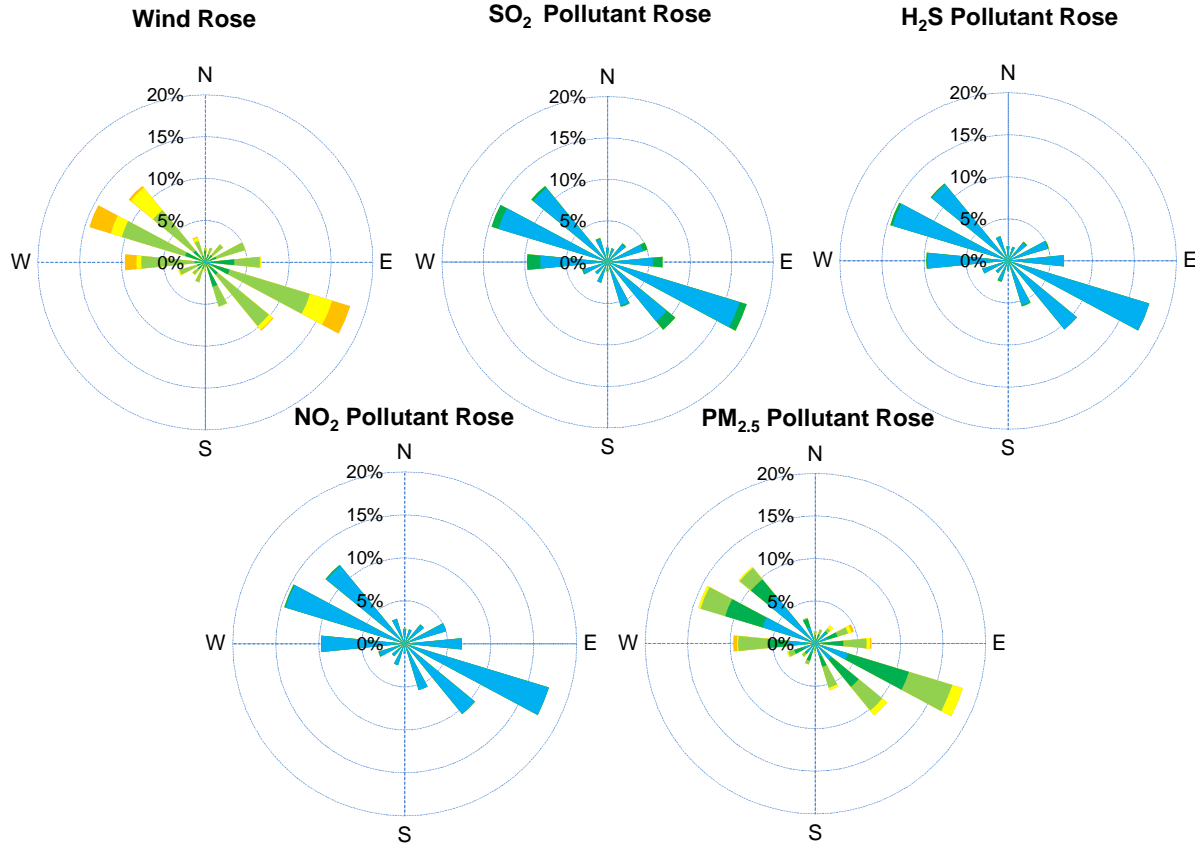
# SESAA Oxbow Station - April 2024 Summary Report

Pollutants		Month Records		24-Hour Records				1-Hour Records			
Name	Conc. Unit	Avg. Conc.	Uptime	Maximum		SAAQS Standard	Exceed Days	Maximum		SAAQS Standard	Exceed Hours
				Conc.	Time			Conc.	Time		
NO	ppb	0.2	100.0%	0.3	Apr-8	-	-	1.1	Apr-08 09:00	-	-
NO <sub>2</sub>	ppb	2.0	100.0%	3.2	Apr-9	106	0	5.3	Apr-26 05:00	159	0
NO <sub>x</sub>	ppb	2.0	100.0%	3.2	Apr-9	-	-	5.7	Apr-26 05:00	-	-
SO <sub>2</sub>	ppb	0.3	100.0%	0.8	Apr-16	48	0	3.4	Apr-29 08:00	172	0
H <sub>2</sub> S	ppb	0.2	100.0%	0.7	Apr-26	3.6	0	1.3	Apr-21 21:00	11	0
PM <sub>2.5</sub>	ug/m3	3.9	96.7%	10.2	Apr-26	28	0	24.5	Apr-09 00:00	-	-

SAAQS: Saskatchewan Ambient Air Quality Standards



# SESAA Oxbow Station - April 2024 Summary Report



Parameters	Unit	Color Code for Wind Spd & Pollutant Conc. Class						
Wind Speed	m/s	$0.3 \leq WS < 1.4$	$1.4 \leq WS < 3.1$	$3.1 \leq WS < 7.8$	$7.8 \leq WS < 10.8$	$10.8 \leq WS < 13.6$	$WS \geq 13.6$	
SO <sub>2</sub>	ppb	$0 \leq C < 1$	$1 \leq C < 5$	$5 \leq C < 10$	$10 \leq C < 57$	$57 \leq C < 172$	$C \geq 172$	
NO <sub>2</sub>	ppb	$0 \leq C < 5$	$5 \leq C < 15$	$15 \leq C < 30$	$30 \leq C < 100$	$100 \leq C < 212$	$C \geq 212$	
H <sub>2</sub> S	ppb	$0 \leq C < 1$	$1 \leq C < 3.6$	$3.6 \leq C < 5$	$5 \leq C < 8$	$8 \leq C < 10.8$	$C \geq 10.8$	
PM <sub>2.5</sub>	ug/m <sup>3</sup>	$0 \leq C < 2$	$2 \leq C < 4$	$4 \leq C < 10$	$10 \leq C < 20$	$20 \leq C < 30$	$C \geq 30$	

## Monthly Update

\*All data has been slope, intercept, and baseline corrected. Data may change after validation process.

\*All compliance parameters were within the Saskatchewan Ambient Air Quality Standards.

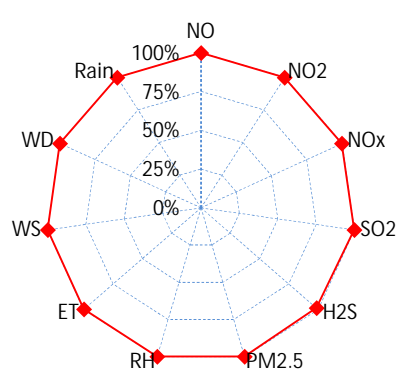
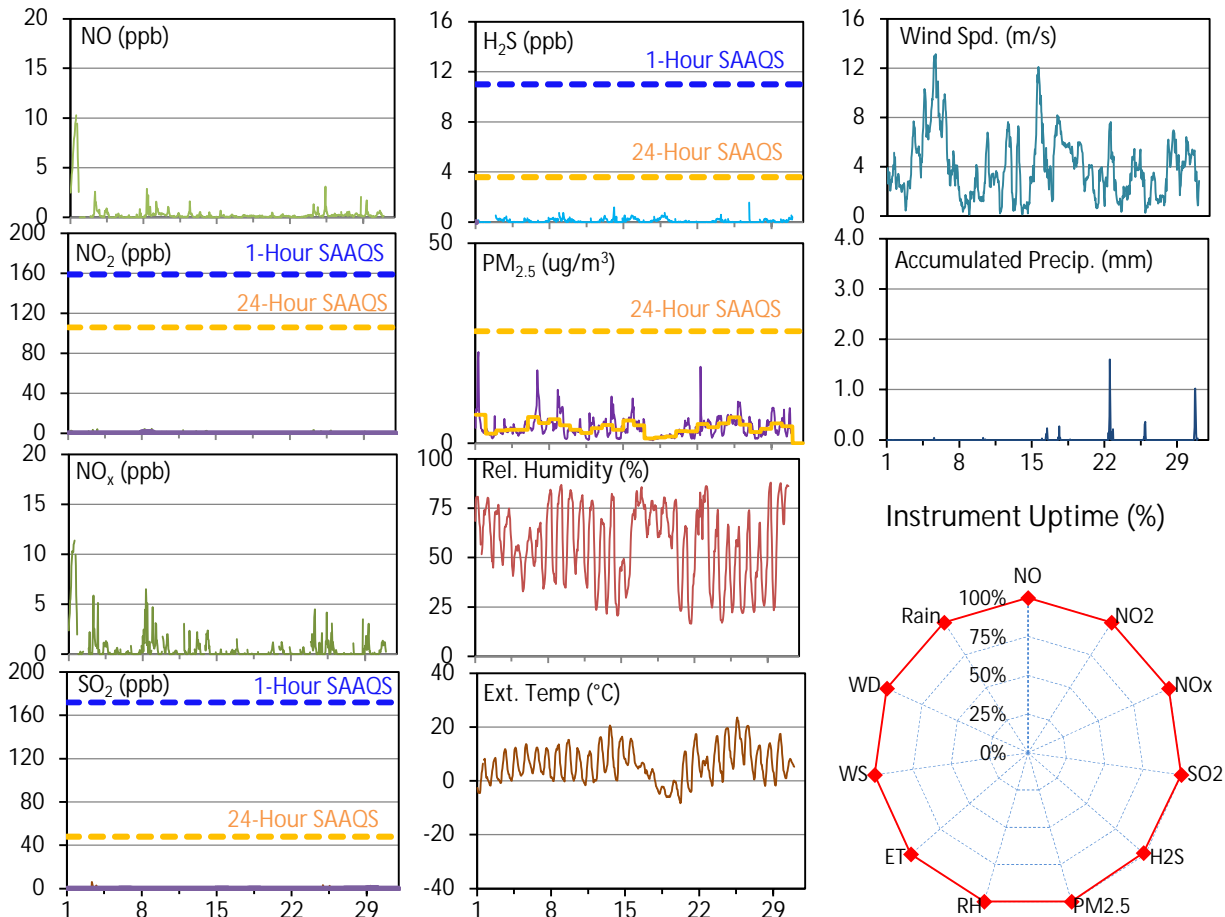
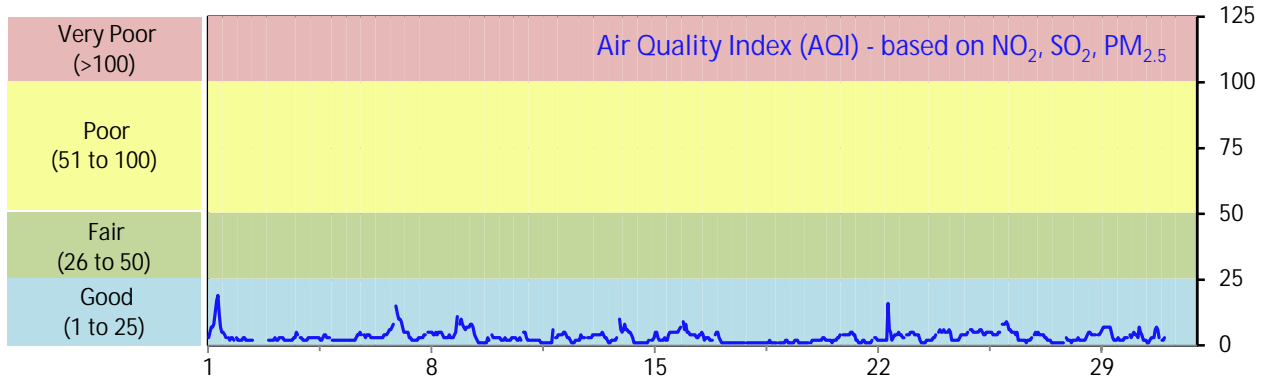
\*All compliance parameters were greater than 90% operational.

\*24 hours of data flagged as "analyzer failure" for PM2.5 due to flatlined data.

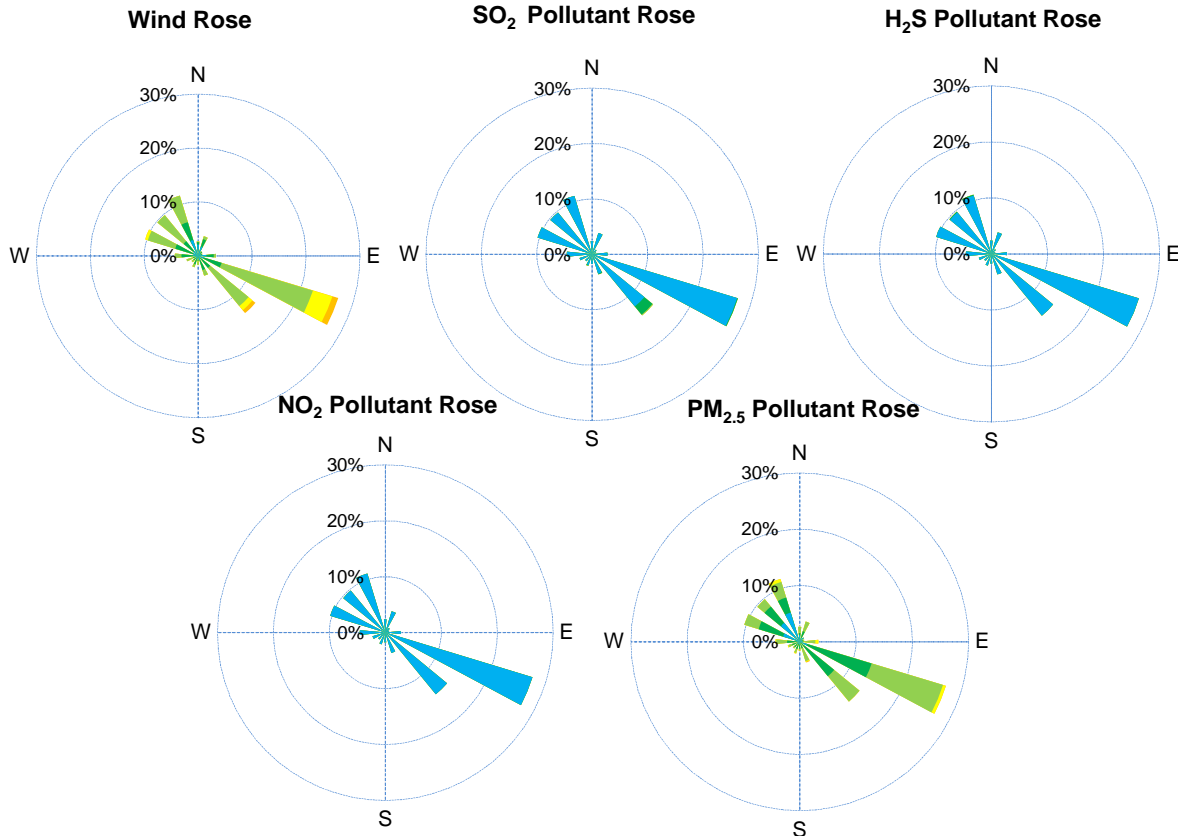
# SESAA Stoughton Station - April 2024 Summary Report

Pollutants		Month Records		24-Hour Records				1-Hour Records			
Name	Conc. Unit	Avg. Conc.	Uptime	Maximum		SAAQS Standard	Exceed Days	Maximum		SAAQS Standard	Exceed Hours
				Conc.	Time			Conc.	Time		
NO	ppb	0.4	99.9%	5.5	Apr-1	-	-	10.3	Apr-01 13:00	-	-
NO <sub>2</sub>	ppb	0.3	99.9%	1.4	Apr-8	106	0	4.4	Apr-03 18:00	159	0
NO <sub>x</sub>	ppb	0.6	99.9%	6.3	Apr-1	-	-	11.4	Apr-01 13:00	-	-
SO <sub>2</sub>	ppb	0.1	99.9%	0.6	Apr-29	48	0	6.2	Apr-03 08:00	172	0
H <sub>2</sub> S	ppb	0.1	98.6%	0.3	Apr-18	3.6	0	1.6	Apr-26 21:00	11	0
PM <sub>2.5</sub>	ug/m3	3.9	99.9%	7.1	Apr-1	28	0	22.8	Apr-01 07:00	-	-

SAAQS: Saskatchewan Ambient Air Quality Standards



# SESAA Stoughton Station - April 2024 Summary Report



Parameters	Unit	Color Code for Wind Spd & Pollutant Conc. Class						
Wind Speed	m/s	$0.3 \leq WS < 1.4$	$1.4 \leq WS < 3.1$	$3.1 \leq WS < 7.8$	$7.8 \leq WS < 10.8$	$10.8 \leq WS < 13.6$	$WS \geq 13.6$	
SO <sub>2</sub>	ppb	$0 \leq C < 1$	$1 \leq C < 5$	$5 \leq C < 10$	$10 \leq C < 57$	$57 \leq C < 172$	$C \geq 172$	
NO <sub>2</sub>	ppb	$0 \leq C < 5$	$5 \leq C < 15$	$15 \leq C < 30$	$30 \leq C < 100$	$100 \leq C < 212$	$C \geq 212$	
H <sub>2</sub> S	ppb	$0 \leq C < 1$	$1 \leq C < 3.6$	$3.6 \leq C < 5$	$5 \leq C < 8$	$8 \leq C < 10.8$	$C \geq 10.8$	
PM <sub>2.5</sub>	ug/m <sup>3</sup>	$0 \leq C < 2$	$2 \leq C < 4$	$4 \leq C < 10$	$10 \leq C < 20$	$20 \leq C < 30$	$C \geq 30$	

## Monthly Update

\*All data has been slope, intercept, and baseline corrected. Data may change after validation process.

\*All compliance parameters were within the Saskatchewan Ambient Air Quality Standards.

\*All compliance parameters were above 90% operational.

\*1 hour of data flagged as "power failure" due to power issues at the station.

\*9 hours of data flagged as "maintenance" for H<sub>2</sub>S, due to the calibration that occurred on April 2 causing flatlined data.

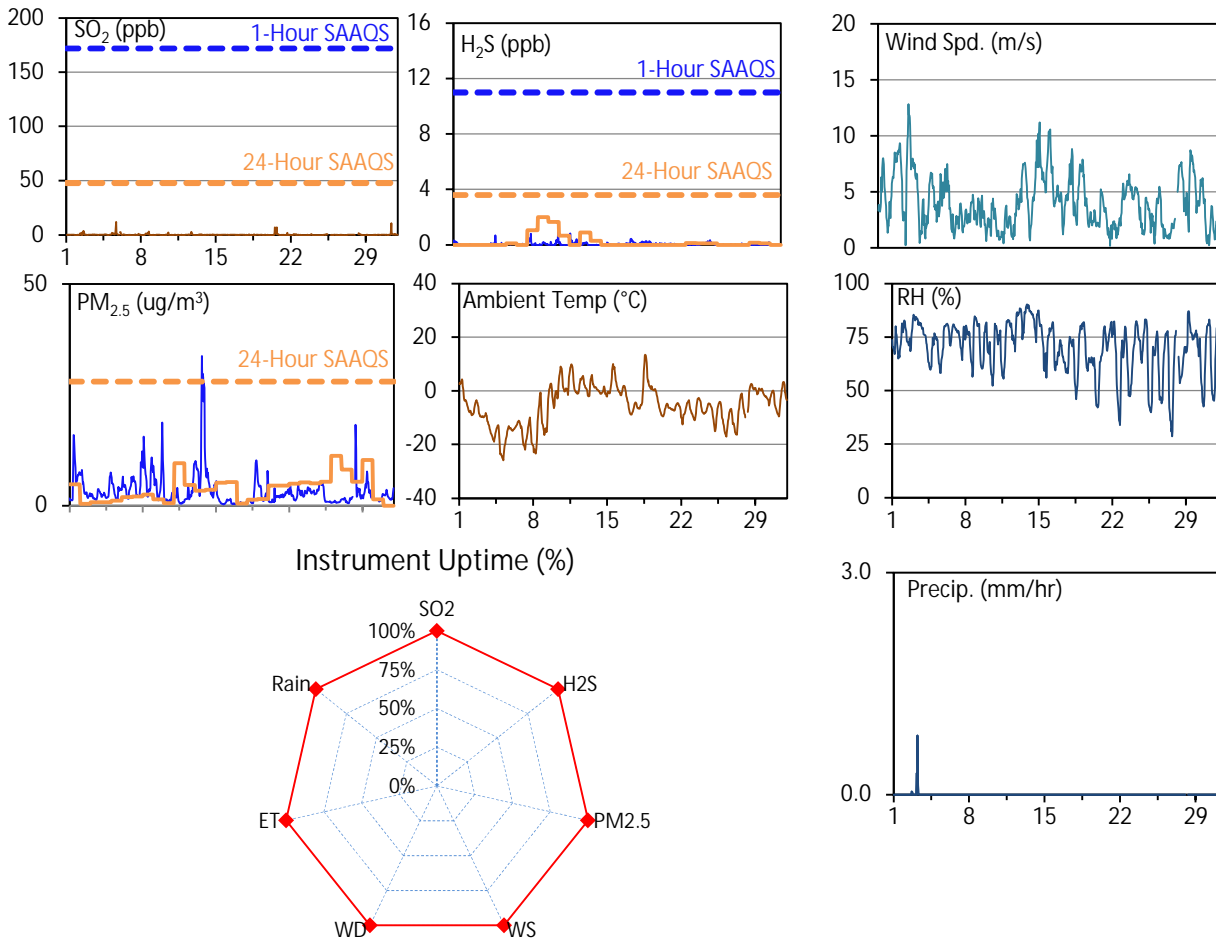
\*Non-routine calibrations were completed for NO<sub>x</sub> and SO<sub>2</sub> on April 2, due to perm tube replacements.



## SESAA Torquay Station - April 2024 Summary Report

Pollutants		Month Records		24-Hour Records				1-Hour Records			
Name	Conc. Unit	Avg. Conc.	Uptime	Maximum		SAAQS Standard	Exceed Days	Maximum		SAAQS Standard	Exceed Hours
				Conc.	Time			Conc.	Time		
SO <sub>2</sub>	ppb	0.2	100.0%	0.5	Apr-27	48	0	12.0	Apr-05 16:00	172	0
H <sub>2</sub> S	ppb	< 0.1	100.0%	2.0	Apr-9	3.6	0	0.9	Apr-10 22:00	11	0
PM <sub>2.5</sub>	ug/m3	3.3	100.0%	11.2	Apr-26	28	0	33.8	Apr-13 15:00	-	-

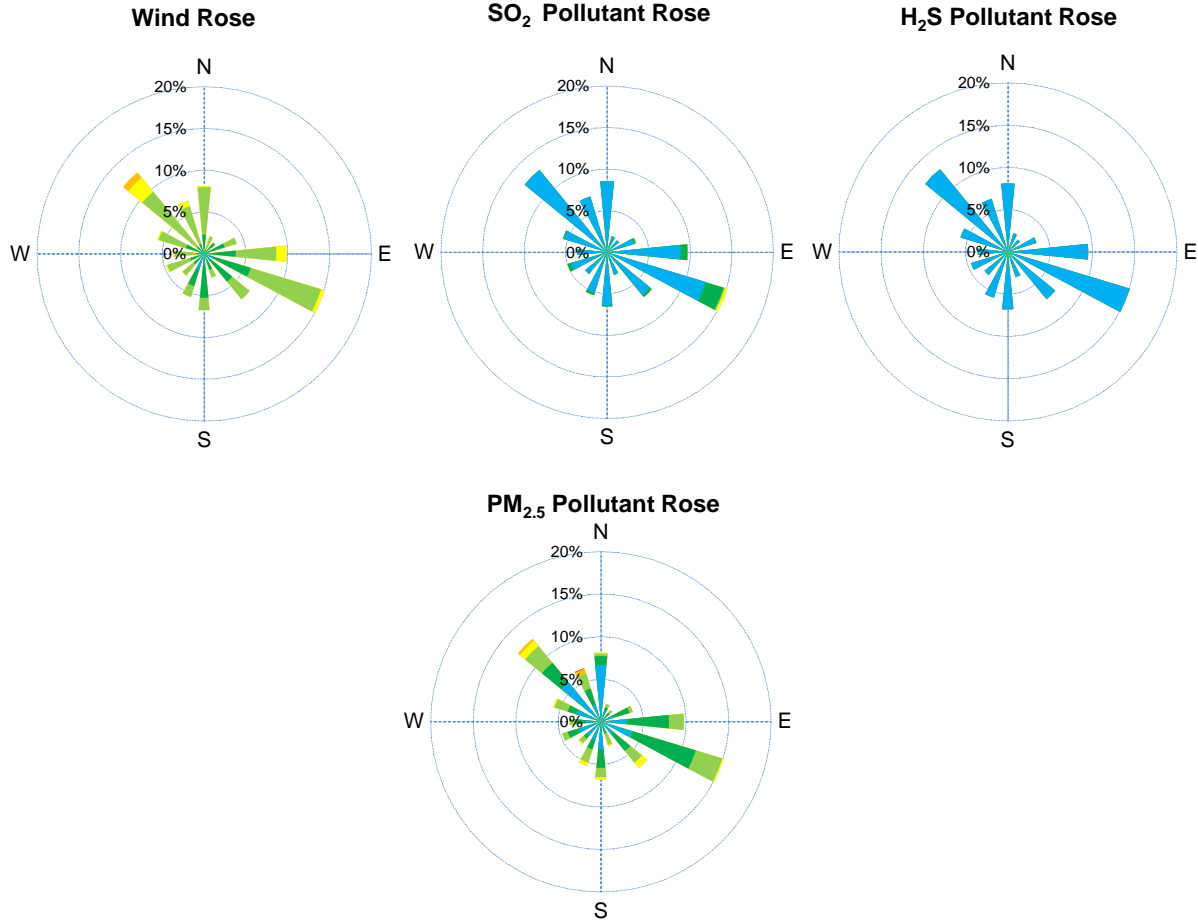
SAAQS: Saskatchewan Ambient Air Quality Standards



### Monthly Update

- \*All data has been slope, intercept, and baseline corrected. Data may change after validation process.
- \*All compliance parameters were within the Saskatchewan Ambient Air Quality Standards.
- \*All compliance parameters had greater than 90% operational uptime.
- \*Non-routine calibration was completed for H<sub>2</sub>S on April 12 due to elevated concentrations which the government flagged.

# SESAA Torquay Station - April 2024 Summary Report

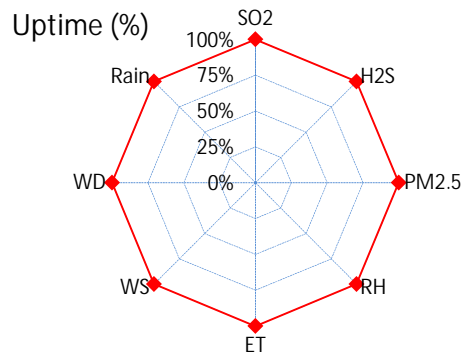
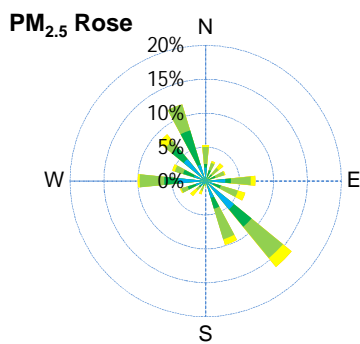
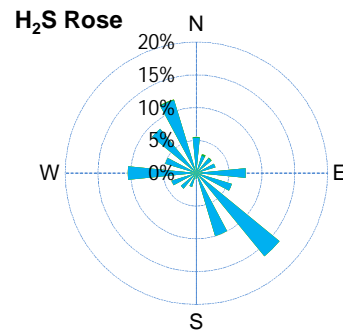
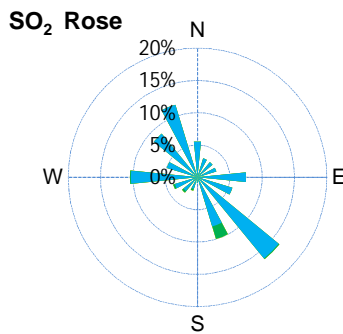
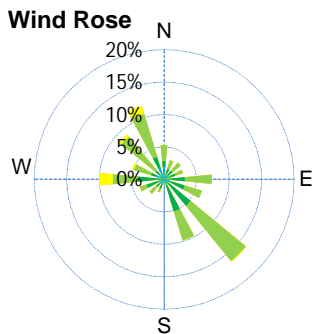
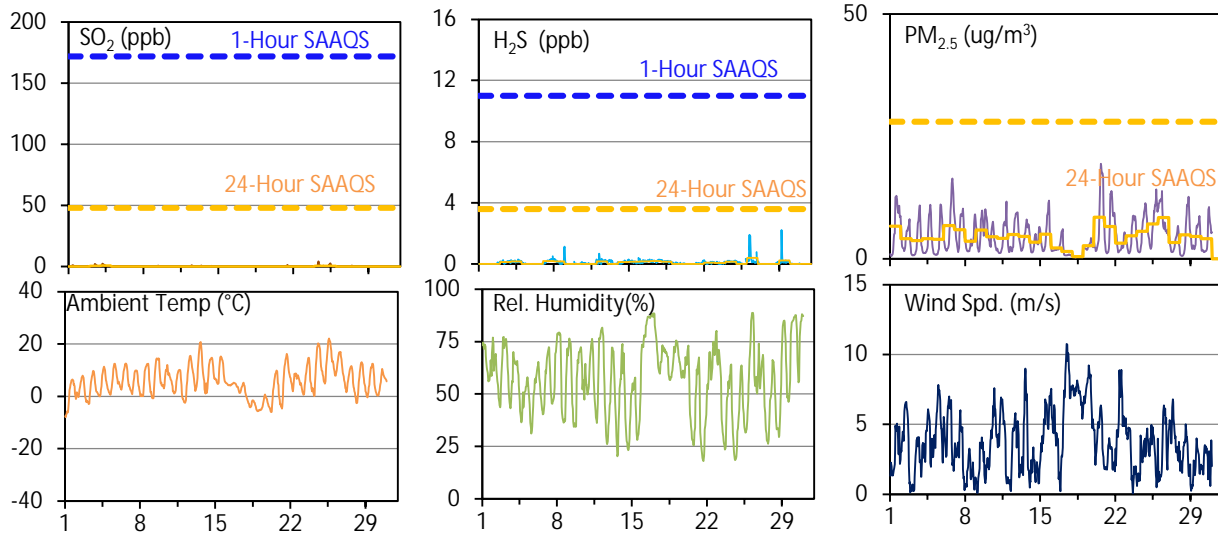


Parameters	Unit	Color Code for Wind Spd & Pollutant Conc. Class						
		0.3 ≤ WS < 1.4	1.4 ≤ WS < 3.1	3.1 ≤ WS < 7.8	7.8 ≤ WS < 10.8	10.8 ≤ WS < 13.6	WS ≥ 13.6	
SO <sub>2</sub>	ppb	0 ≤ C < 1	1 ≤ C < 5	5 ≤ C < 10	10 ≤ C < 57	57 ≤ C < 172	C ≥ 172	
NO <sub>2</sub>	ppb	0 ≤ C < 5	5 ≤ C < 15	15 ≤ C < 30	30 ≤ C < 100	100 ≤ C < 212	C ≥ 212	
O <sub>3</sub>	ppb	0 ≤ C < 10	10 ≤ C < 20	20 ≤ C < 40	40 ≤ C < 60	60 ≤ C < 82	C ≥ 82	
H <sub>2</sub> S	ppb	0 ≤ C < 1	1 ≤ C < 3.6	3.6 ≤ C < 5	5 ≤ C < 8	8 ≤ C < 10.8	C ≥ 10.8	
PM <sub>2.5</sub>	ug/m <sup>3</sup>	0 ≤ C < 2	2 ≤ C < 4	4 ≤ C < 10	10 ≤ C < 20	20 ≤ C < 30	C ≥ 30	

# SESAA Wauchope Station - April 2024 Summary Report

Pollutants		Month Records		24-Hour Records				1-Hour Records			
Name	Conc. Unit	Avg. Conc.	Uptime	Maximum		SAAQS Objective	Exceed Days	Maximum		SAAQS Objective	Exceed Hours
				Conc.	Time			Conc.	Time		
SO <sub>2</sub>	ppb	0.1	100.0%	0.7	Apr-24	48	0	4.2	Apr-24 08:00	172	0
H <sub>2</sub> S	ppb	0.1	100.0%	0.4	Apr-26	3.6	0	2.2	Apr-29 05:00	11	0
PM <sub>2.5</sub>	ug/m3	4.6	100.0%	8.5	Apr-20	28	0	19.4	Apr-20 15:00	-	-

SAAQS: Saskatchewan Ambient Air Quality Standards



## SESAA Wauchope Station - April 2024 Summary Report

Parameters	Unit	Color Code for Wind Spd & Pollutant Conc. Class					
Wind Speed	m/s	$0.3 \leq WS < 1.4$	$1.4 \leq WS < 3.1$	$3.1 \leq WS < 7.8$	$7.8 \leq WS < 10.8$	$10.8 \leq WS < 13.6$	$WS \geq 13.6$
SO <sub>2</sub>	ppb	$0 \leq C < 1$	$1 \leq C < 5$	$5 \leq C < 10$	$10 \leq C < 57$	$57 \leq C < 172$	$C \geq 172$
H <sub>2</sub> S	ppb	$0 \leq C < 1$	$1 \leq C < 3.6$	$3.6 \leq C < 5$	$5 \leq C < 8$	$8 \leq C < 10.8$	$C \geq 10.8$
PM <sub>2.5</sub>	ug/m <sup>3</sup>	$0 \leq C < 2$	$2 \leq C < 4$	$4 \leq C < 10$	$10 \leq C < 20$	$20 \leq C < 30$	$C \geq 30$

### Monthly Update

\*All data has been slope, intercept, and baseline corrected. Data may change after validation process.

\*All compliance parameters were within the Saskatchewan Ambient Air Quality Standards.

\*All compliance parameters were greater than 90% operational.

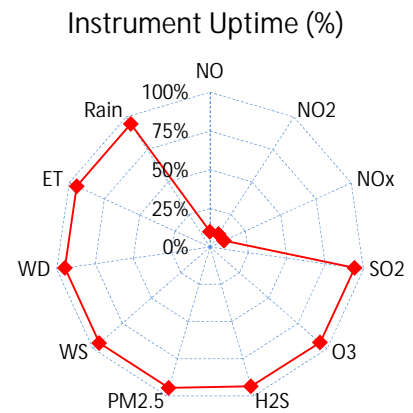
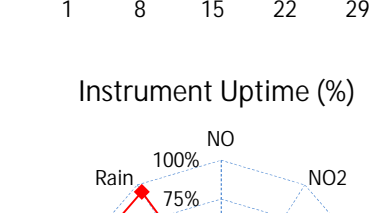
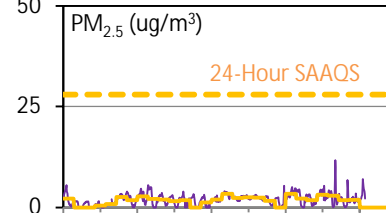
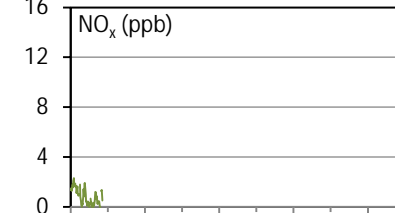
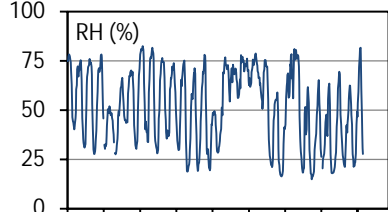
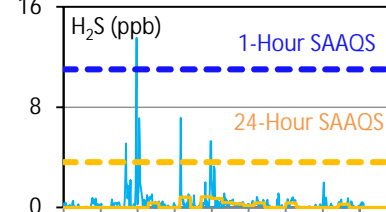
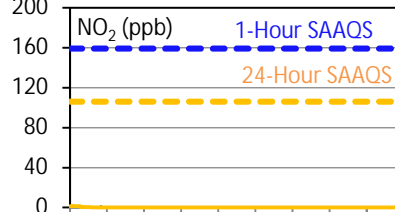
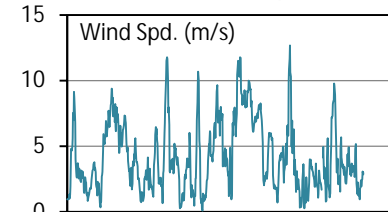
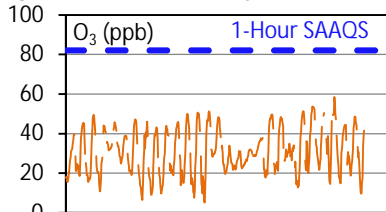
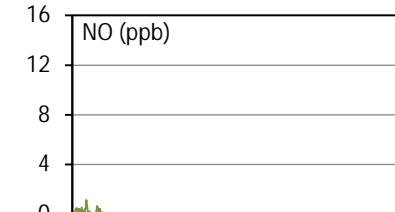
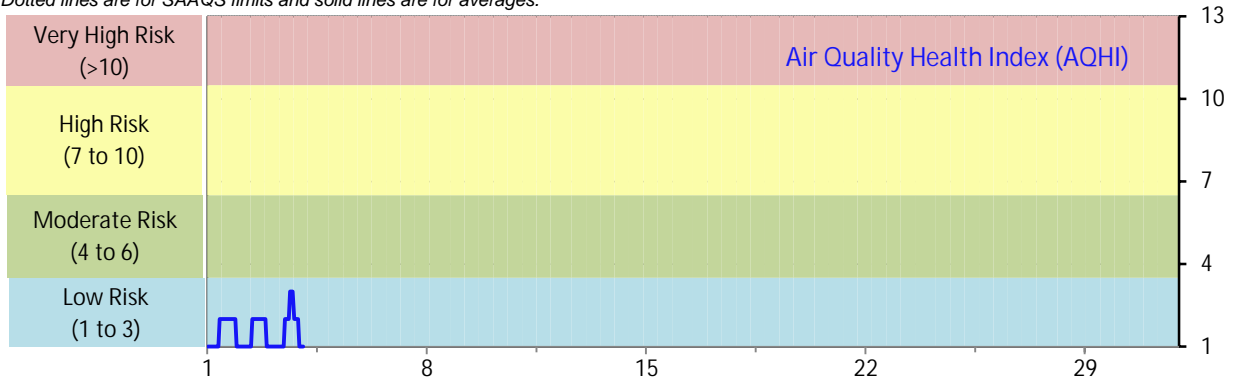
# SESAA Weyburn Station - April 2024 Summary Report

Pollutants		Month Records		24-Hour Records				1-Hour Records			
Name	Conc. Unit	Avg. Conc.	Uptime	Maximum		SAAQS Standard	Exceed Days	Maximum		SAAQS Standard	Exceed Hours
				Conc.	Time			Conc.	Time		
NO	ppb	0.2	10.0%	0.2	Apr-1	-	-	1.1	Apr-02 08:00	-	-
NO <sub>2</sub>	ppb	0.6	10.0%	1.2	Apr-1	106	0	1.9	Apr-01 07:00	159	0
NO <sub>x</sub>	ppb	0.8	10.0%	1.4	Apr-1	-	-	2.3	Apr-01 07:00	-	-
SO <sub>2</sub>	ppb	1.2	94.3%	4.6	Apr-5	48	0	23.6	Apr-06 04:00	172	0
O <sub>3</sub>	ppb	30.8	93.9%	40.2	Apr-24	-	-	58.5	Apr-26 16:00	82	0
H <sub>2</sub> S	ppb	0.3	93.6%	0.8	Apr-12	3.6	0	13.5	Apr-07 21:00	11	1
PM <sub>2.5</sub>	ug/m3	2.0	94.6%	3.4	Apr-22	28	0	11.8	Apr-26 16:00	-	-

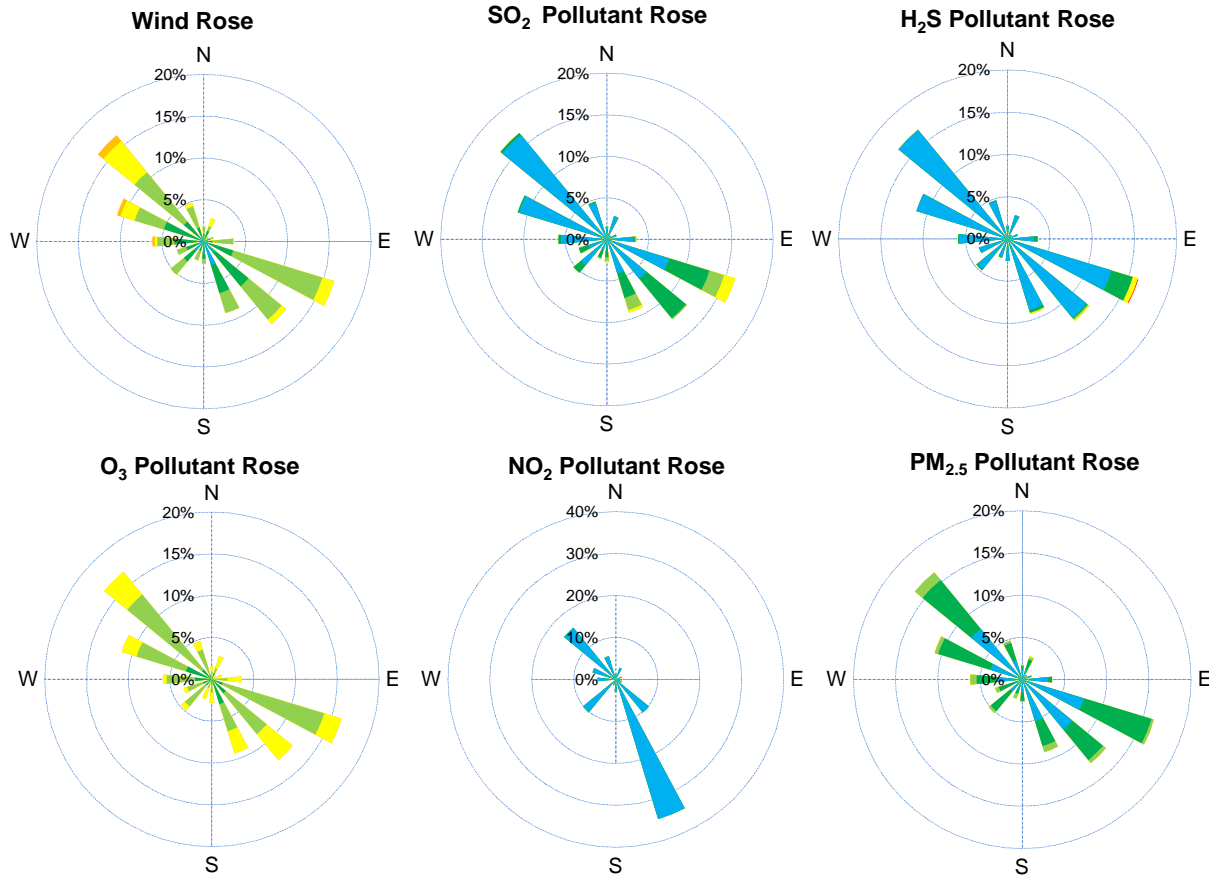
SAAQS: Saskatchewan Ambient Air Quality Standards

\* Air Quality Standard refers to Saskatchewan Ambient Air Quality Standards (SAAQS).

\* Dotted lines are for SAAQS limits and solid lines are for averages.



# SESAA Weyburn Station - April 2024 Summary Report



Parameters	Unit	Color Code for Wind Spd & Pollutant Conc. Class						
Wind Speed	m/s	$0.3 \leq WS < 1.4$	$1.4 \leq WS < 3.1$	$3.1 \leq WS < 7.8$	$7.8 \leq WS < 10.8$	$10.8 \leq WS < 13.6$	$WS \geq 13.6$	
SO <sub>2</sub>	ppb	$0 \leq C < 1$	$1 \leq C < 5$	$5 \leq C < 10$	$10 \leq C < 57$	$57 \leq C < 172$	$C \geq 172$	
NO <sub>2</sub>	ppb	$0 \leq C < 5$	$5 \leq C < 15$	$15 \leq C < 30$	$30 \leq C < 100$	$100 \leq C < 212$	$C \geq 212$	
O <sub>3</sub>	ppb	$0 \leq C < 10$	$10 \leq C < 20$	$20 \leq C < 40$	$40 \leq C < 60$	$60 \leq C < 82$	$C \geq 82$	
H <sub>2</sub> S	ppb	$0 \leq C < 1$	$1 \leq C < 3.6$	$3.6 \leq C < 5$	$5 \leq C < 8$	$8 \leq C < 10.8$	$C \geq 10.8$	
PM <sub>2.5</sub>	ug/m <sup>3</sup>	$0 \leq C < 2$	$2 \leq C < 4$	$4 \leq C < 10$	$10 \leq C < 20$	$20 \leq C < 30$	$C \geq 30$	

## Monthly Update

- \*All data has been slope, intercept, and baseline corrected. Data may change after validation process.
- \*All compliance parameters were within the Saskatchewan Ambient Air Quality Standards with the exception of one 1-hour H<sub>2</sub>S exceedances.
- \*All compliance parameters were above 90% operational, except NO/NO<sub>2</sub>/NO<sub>x</sub>.
- \*4 - 6 hours of data for all parameters flagged as "power failure" due to power issues causing flatlines and spikes.
- \*613 hours of data for NO/NO<sub>2</sub>/NO<sub>x</sub> flagged as "analyzer failure" due to the analyzer being removed from the station April 4 and redeployed April 26. April 26. Analyzer was not calibrated after deployment due to HVAC issue with the station.
- \*35 hours of data for the whole station flagged as "HVAC failure" due to issues with the A/C unit. Station was shut down April 29.

## Exceedance Summary

1-hour Exceedance Information			Summary of Other Parameters During Exceedance								
Pollutant	Conc. ppb	Exceedance Time mmm-dd hh:mm	WS m/s	WD deg	AQHI -	Rain mm	SO <sub>2</sub> ppb	NO <sub>2</sub> ppb	O <sub>3</sub> ppb	H <sub>2</sub> S ppb	PM <sub>2.5</sub> ug/m <sup>3</sup>
h2s	13.5	Apr-07 21:00	2.5	112	0	0.0	0	0	24	13.5	1.9