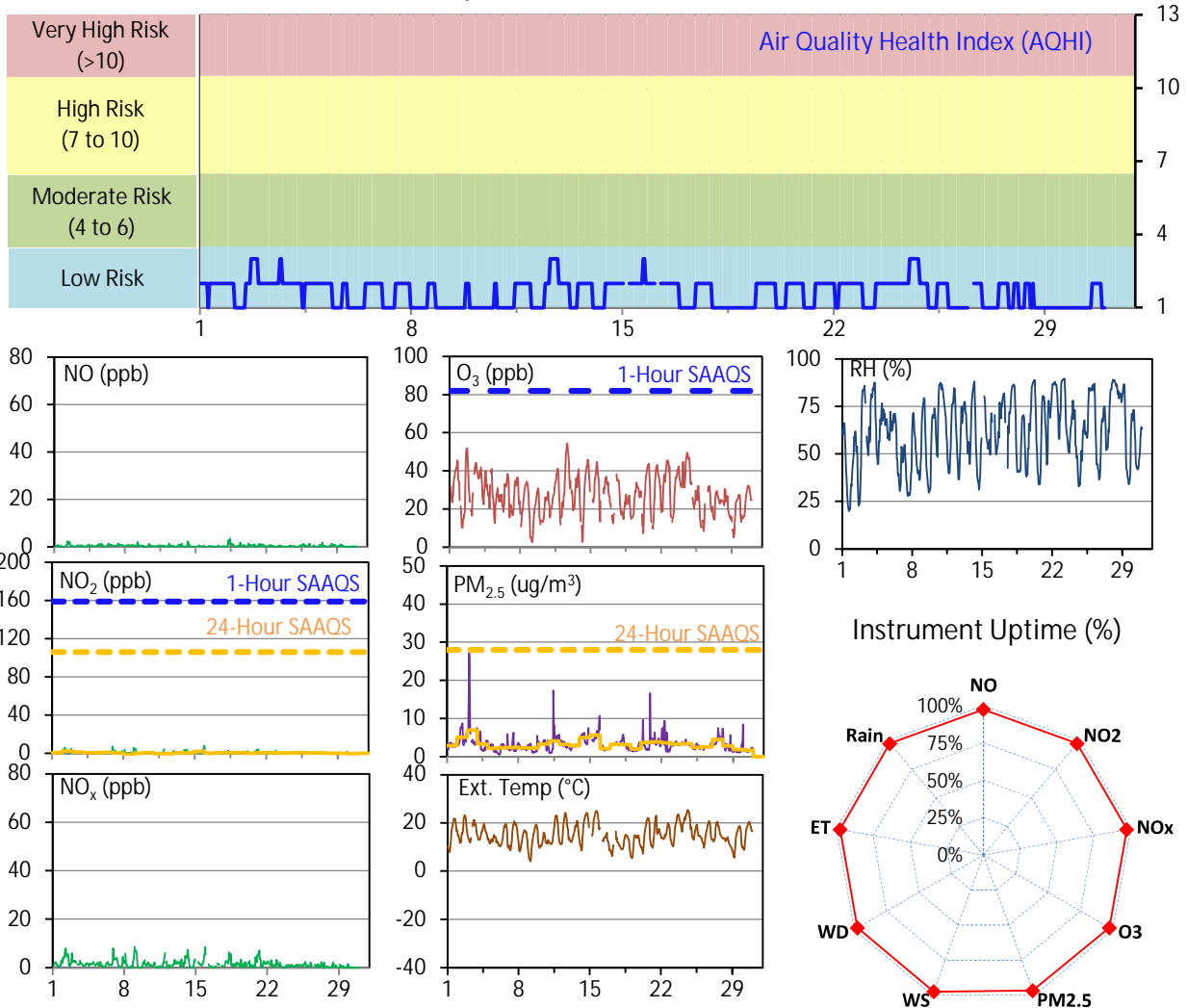


SESAA Esterhazy Station - June 2024 Summary Report

Pollutants		Month Records		24-Hour Records				1-Hour Records			
Name	Conc. Unit	Avg. Conc.	Uptime	Maximum		SAAQS Standard	Exceed Days	Maximum		SAAQS Standard	Exceed Hours
				Conc.	Time			Conc.	Time		
NO	ppb	0.4	97.5%	0.8	Jun-18	-	-	3.5	Jun-18 10:00	-	-
NO ₂	ppb	0.7	97.5%	2.3	Jun-2	106	0	7.8	Jun-15 22:00	159	0
NO _x	ppb	1.4	97.5%	4.0	Jun-2	-	-	8.7	Jun-09 00:00	-	-
O ₃	ppb	27.5	97.5%	40.9	Jun-24	-	-	54.4	Jun-12 16:00	82	0
PM _{2.5}	ug/m3	3.2	96.7%	7.0	Jun-3	28	0	27.2	Jun-03 04:00	-	-

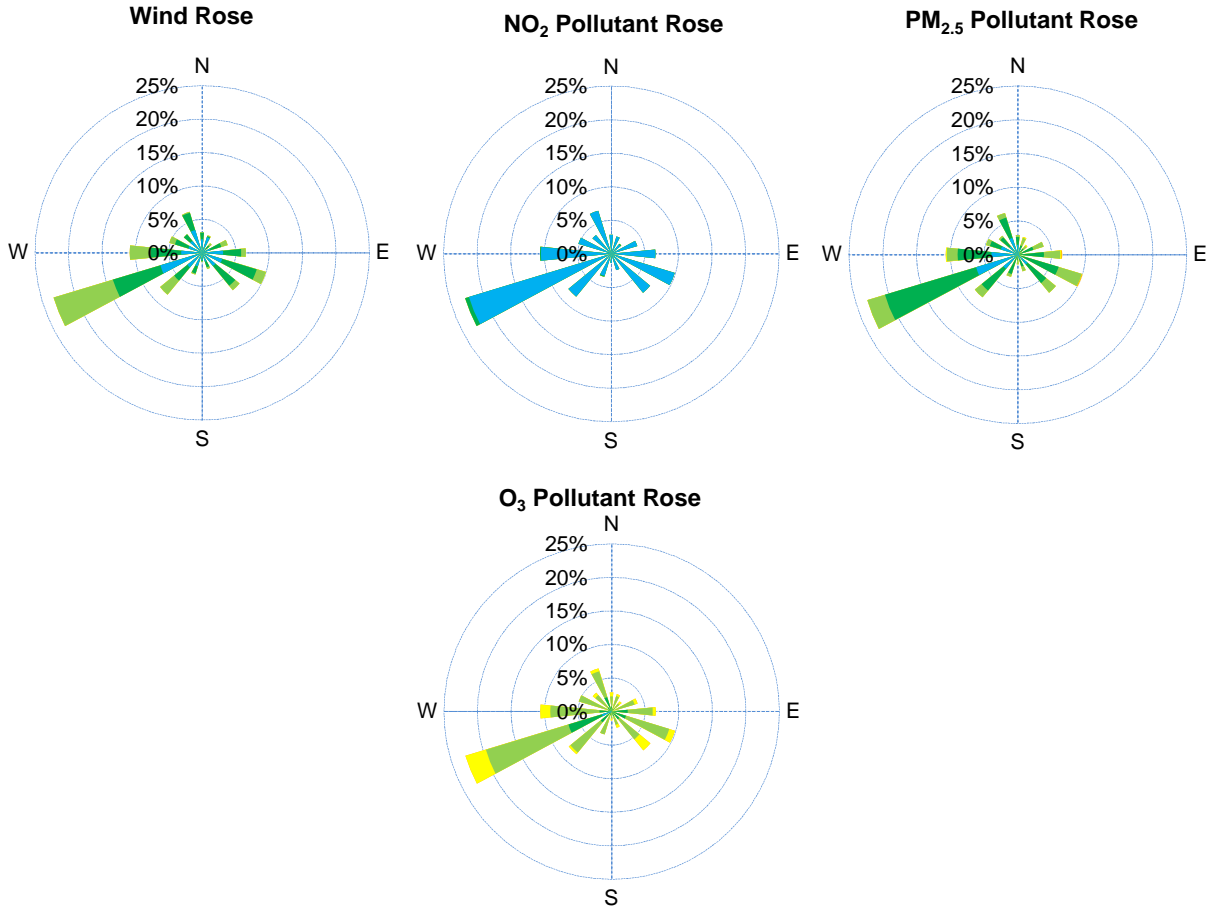
SAAQS: Saskatchewan Ambient Air Quality Standards



Monthly Update

- *All data has been slope, intercept, and baseline corrected. Data may change after validation process.
- *All compliance parameters were within the Saskatchewan Ambient Air Quality Standards.
- *All compliance parameters were above 90% operational.
- *6 hours of data for PM_{2.5} flagged as "maintenance" due to the data being influenced by the calibration that was occurring onsite.
- *18 hours of data for all parameters flagged as "logging failure" due to data logging resulting in missing data.
- *Routine quarterly calibration was completed on June 26, 2024.

SESAA Esterhazy Station - June 2024 Summary Report

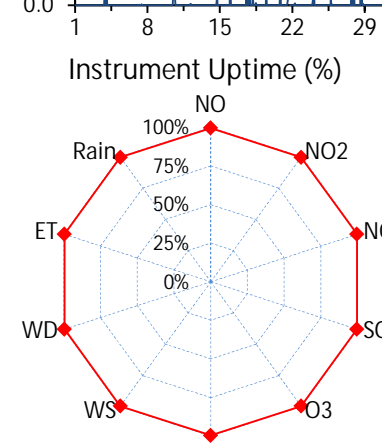
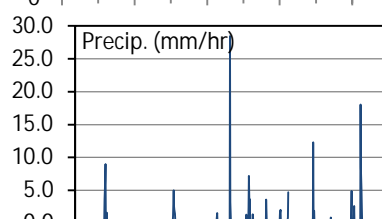
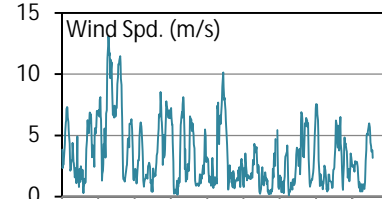
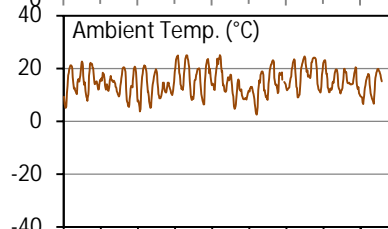
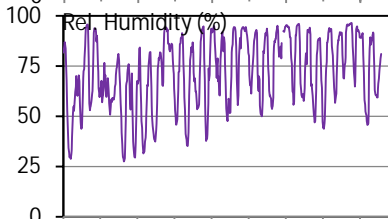
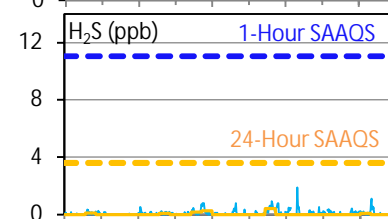
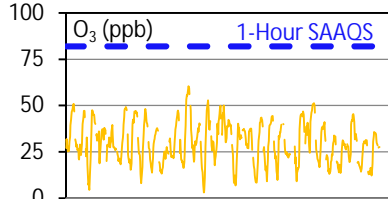
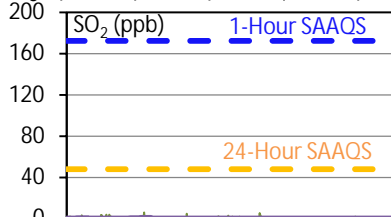
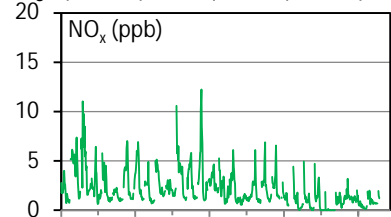
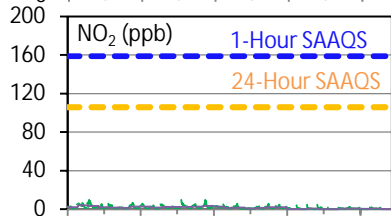
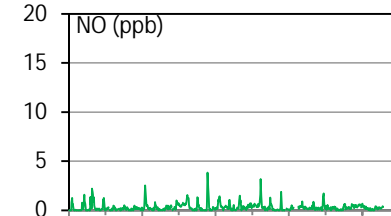
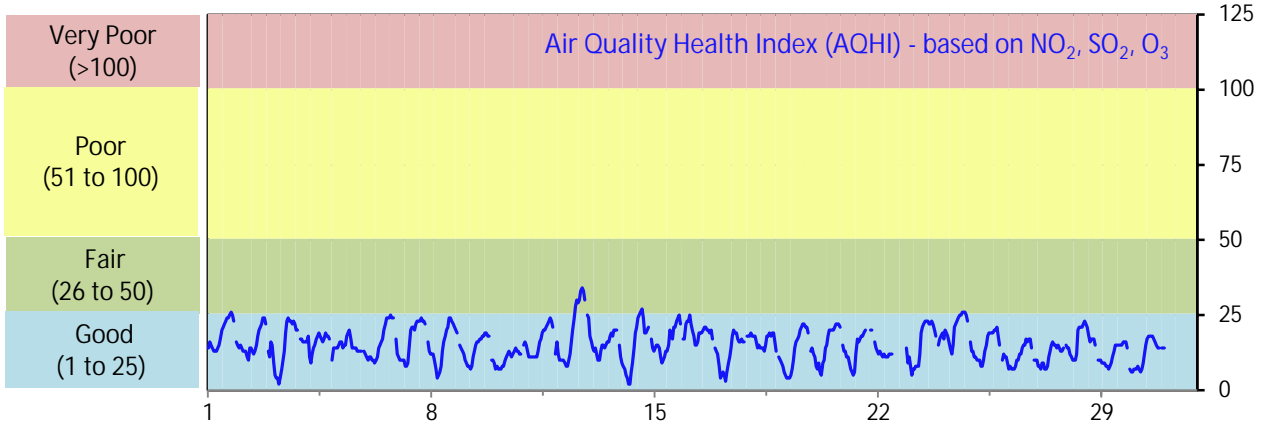


Parameters	Unit	Color Code for Wind Spd & Pollutant Conc. Class					
Wind Speed	m/s	$0.3 \leq WS < 1.4$	$1.4 \leq WS < 3.1$	$3.1 \leq WS < 7.8$	$7.8 \leq WS < 10.8$	$10.8 \leq WS < 13.6$	$WS \geq 13.6$
NO ₂	ppb	$0 \leq C < 5$	$5 \leq C < 15$	$15 \leq C < 30$	$30 \leq C < 100$	$100 \leq C < 212$	$C \geq 212$
PM _{2.5}	ug/m ³	$0 \leq C < 2$	$2 \leq C < 4$	$4 \leq C < 10$	$10 \leq C < 20$	$20 \leq C < 30$	$C \geq 30$
O ₃	ppb	$0 \leq C < 10$	$10 \leq C < 20$	$20 \leq C < 40$	$40 \leq C < 60$	$60 \leq C < 82$	$C \geq 82$

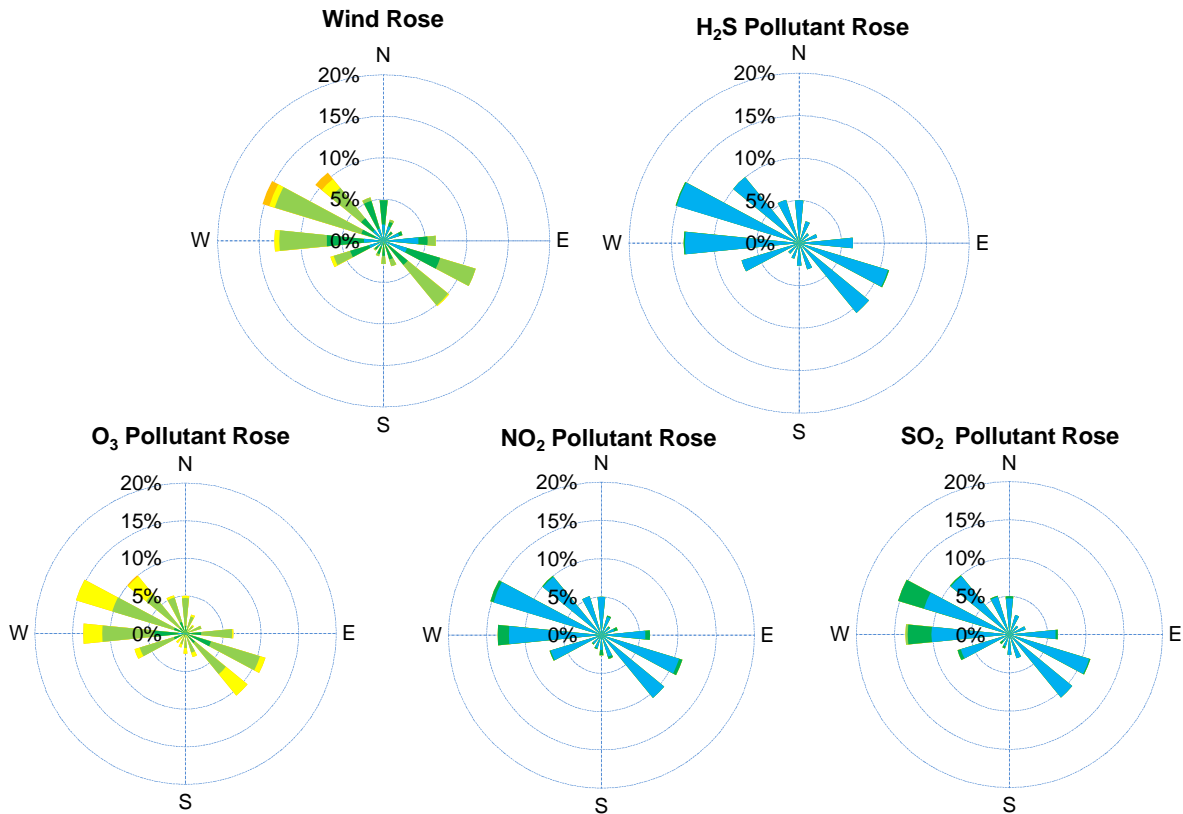
SESAA Glen Ewen Station - June 2024 Summary Report

Pollutants		Month Records		24-Hour Records				1-Hour Records			
Name	Conc. Unit	Avg. Conc.	Uptime	Maximum		SAAQS Standard	Exceed Days	Maximum		SAAQS Standard	Exceed Hours
				Conc.	Time			Conc.	Time		
NO	ppb	0.3	99.6%	0.6	Jun-19	-	-	3.8	Jun-14 05:00	-	-
NO ₂	ppb	1.8	99.6%	4.0	Jun-2	106	0	9.9	Jun-14 04:00	159	0
NO _x	ppb	2.1	99.6%	4.3	Jun-2	-	-	12.3	Jun-14 05:00	-	-
SO ₂	ppb	0.3	99.6%	0.8	Jun-8	48	0	5.9	Jun-08 08:00	172	0
O ₃	ppb	29.9	99.6%	39.7	Jun-24	-	-	60.4	Jun-12 17:00	82	0
H ₂ S	ppb	0.1	99.6%	0.4	Jun-20	3.6	0	1.9	Jun-23 01:00	11	0

SAAQS: Saskatchewan Ambient Air Quality Standards



SESAA Glen Ewen Station - June 2024 Summary Report



Parameters	Unit	Color Code for Wind Spd & Pollutant Conc. Class						
Wind Speed	m/s	0.3 ≤ WS < 1.4	1.4 ≤ WS < 3.1	3.1 ≤ WS < 7.8	7.8 ≤ WS < 10.8	10.8 ≤ WS < 13.6	WS ≥ 13.6	
SO ₂	ppb	0 ≤ C < 1	1 ≤ C < 5	5 ≤ C < 10	10 ≤ C < 57	57 ≤ C < 172	C ≥ 172	
NO ₂	ppb	0 ≤ C < 5	5 ≤ C < 15	15 ≤ C < 30	30 ≤ C < 100	100 ≤ C < 212	C ≥ 212	
O ₃	ppb	0 ≤ C < 10	10 ≤ C < 20	20 ≤ C < 40	40 ≤ C < 60	60 ≤ C < 82	C ≥ 82	
H ₂ S	ppb	0 ≤ C < 1	1 ≤ C < 3.6	3.6 ≤ C < 5	5 ≤ C < 8	8 ≤ C < 10.8	C ≥ 10.8	

Monthly Update

*All data has been slope, intercept, and baseline corrected. Data may change after validation process.

*All compliance parameters were within the Saskatchewan Ambient Air Quality Standards.

*All compliance parameters were more than 90% operational.

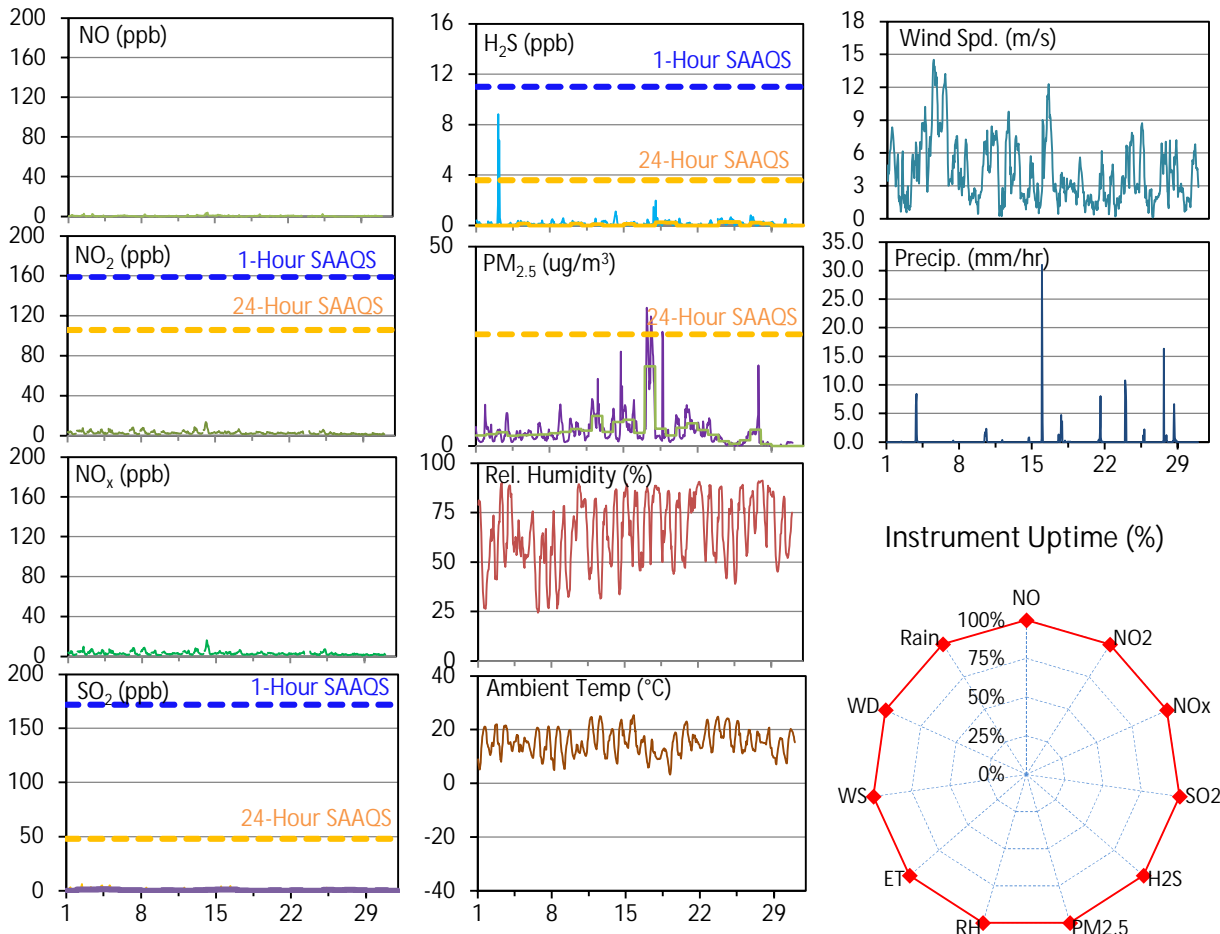
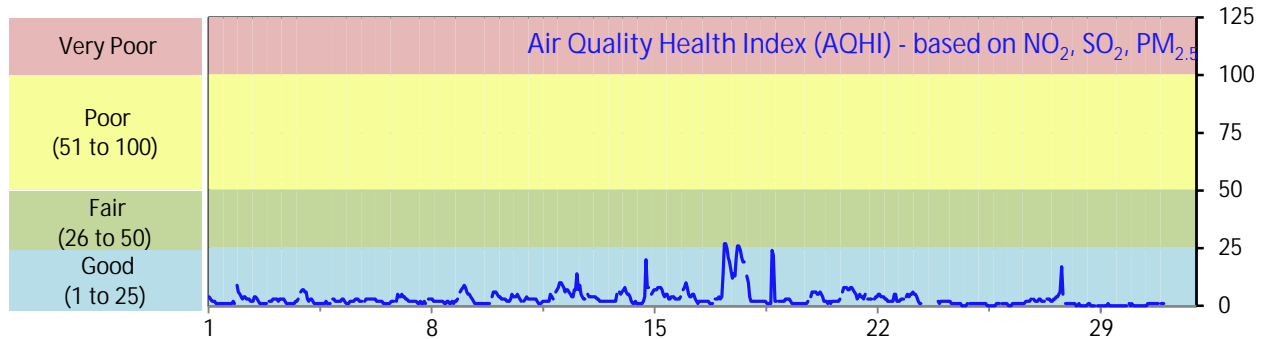
*3 hours of data for the whole station is flagged as "power failure" due to power interruptions on June 21.

*Routine quarterly calibrations were completed on June 22, 2024.

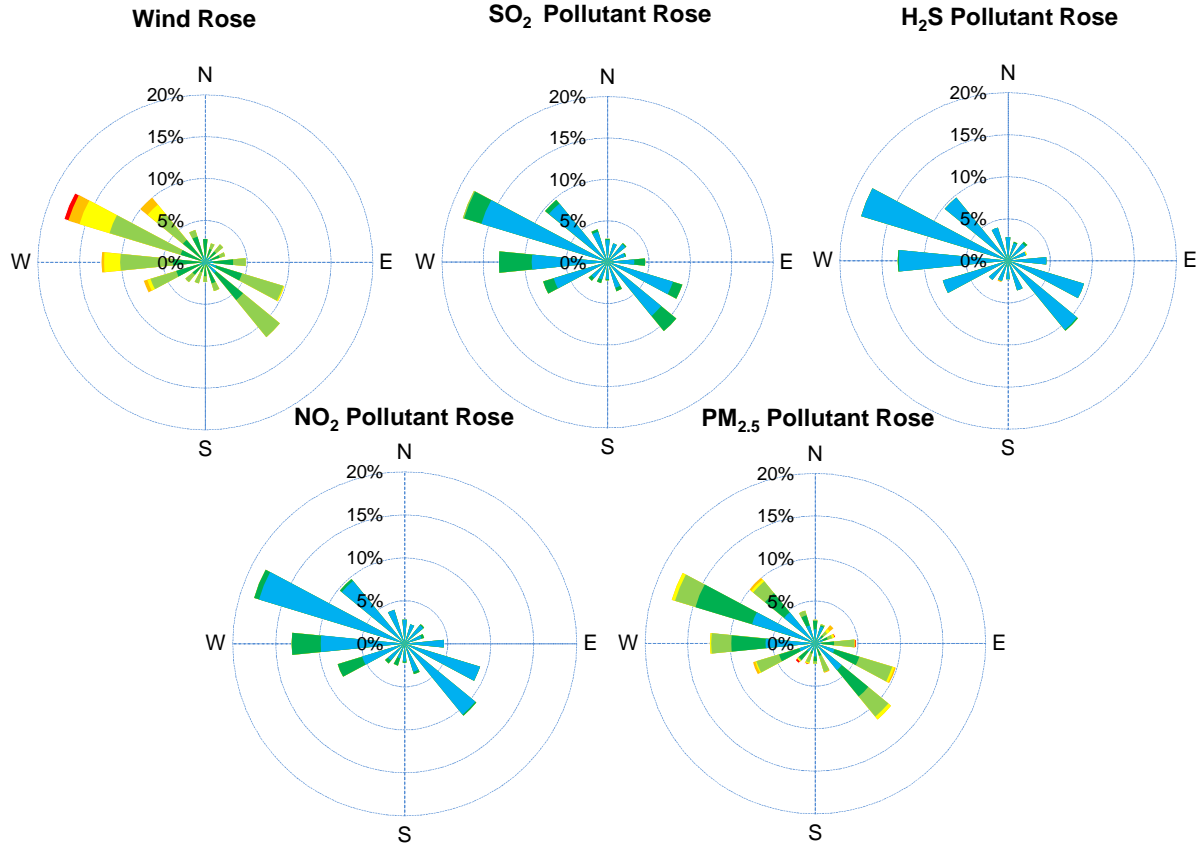
SESAA Oxbow Station - June 2024 Summary Report

Pollutants		Month Records		24-Hour Records				1-Hour Records			
Name	Conc. Unit	Avg. Conc.	Uptime	Maximum		SAAQS Standard	Exceed Days	Maximum		SAAQS Standard	Exceed Hours
				Conc.	Time			Conc.	Time		
NO	ppb	0.4	99.7%	1.4	Jun-14	-	-	3.9	Jun-14 06:00	-	-
NO ₂	ppb	2.9	99.7%	5.3	Jun-14	106	0	13.9	Jun-14 02:00	159	0
NO _x	ppb	3.1	99.7%	5.9	Jun-14	-	-	16.3	Jun-14 02:00	-	-
SO ₂	ppb	0.5	100.0%	1.4	Jun-4	48	0	6.2	Jun-02 11:00	172	0
H ₂ S	ppb	0.2	100.0%	0.3	Jun-24	3.6	0	8.8	Jun-03 02:00	11	0
PM _{2.5}	ug/m3	3.8	100.0%	20.0	Jun-17	28	0	34.6	Jun-17 04:00	-	-

SAAQS: Saskatchewan Ambient Air Quality Standards



SESAA Oxbow Station - June 2024 Summary Report



Parameters	Unit	Color Code for Wind Spd & Pollutant Conc. Class						
Wind Speed	m/s	$0.3 \leq WS < 1.4$	$1.4 \leq WS < 3.1$	$3.1 \leq WS < 7.8$	$7.8 \leq WS < 10.8$	$10.8 \leq WS < 13.6$	$WS \geq 13.6$	
SO ₂	ppb	$0 \leq C < 1$	$1 \leq C < 5$	$5 \leq C < 10$	$10 \leq C < 57$	$57 \leq C < 172$	$C \geq 172$	
NO ₂	ppb	$0 \leq C < 5$	$5 \leq C < 15$	$15 \leq C < 30$	$30 \leq C < 100$	$100 \leq C < 212$	$C \geq 212$	
H ₂ S	ppb	$0 \leq C < 1$	$1 \leq C < 3.6$	$3.6 \leq C < 5$	$5 \leq C < 8$	$8 \leq C < 10.8$	$C \geq 10.8$	
PM _{2.5}	ug/m ³	$0 \leq C < 2$	$2 \leq C < 4$	$4 \leq C < 10$	$10 \leq C < 20$	$20 \leq C < 30$	$C \geq 30$	

Monthly Update

*All data has been slope, intercept, and baseline corrected. Data may change after validation process.

*All compliance parameters were within the Saskatchewan Ambient Air Quality Standards.

*All compliance parameters were greater than 90% operational.

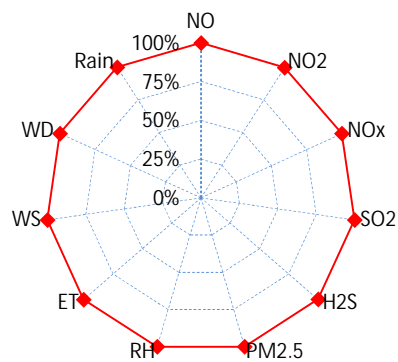
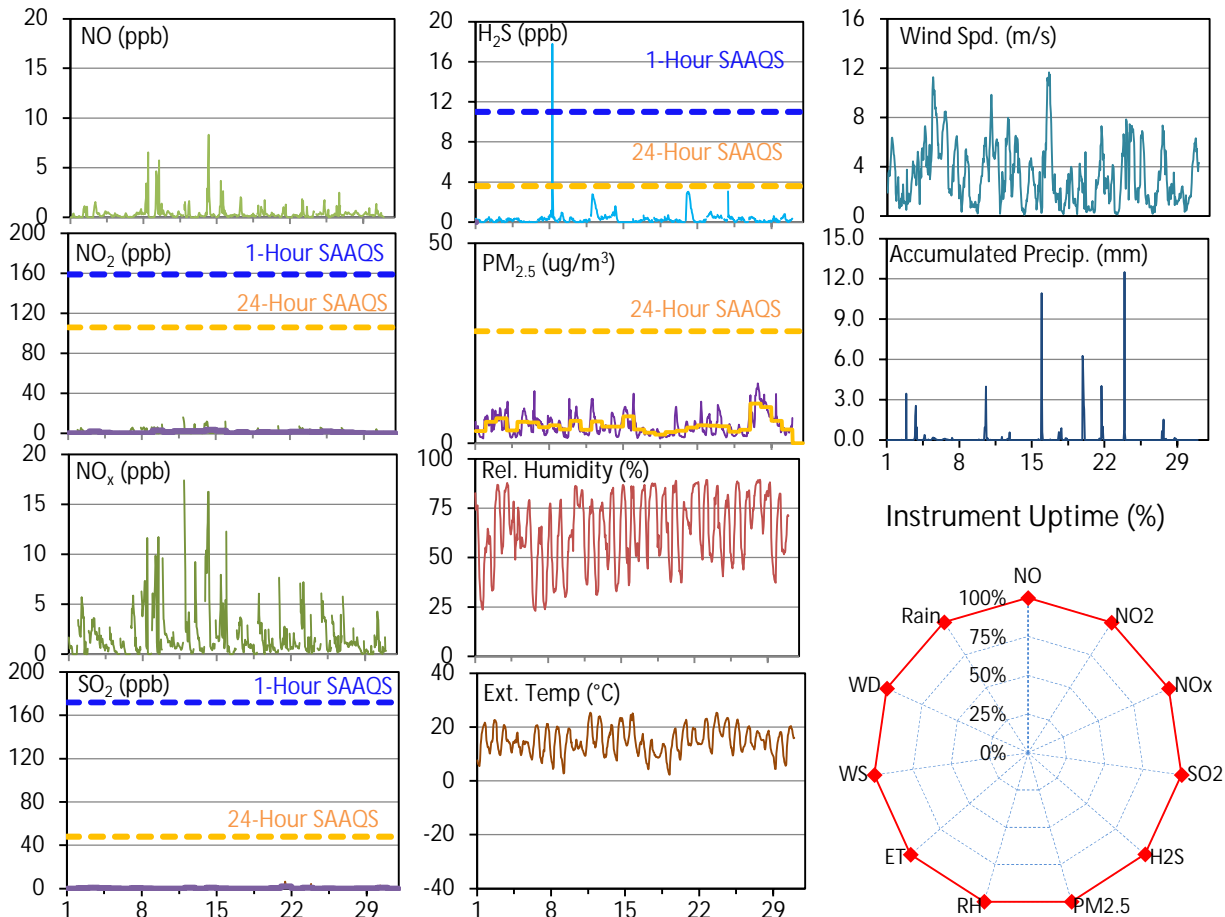
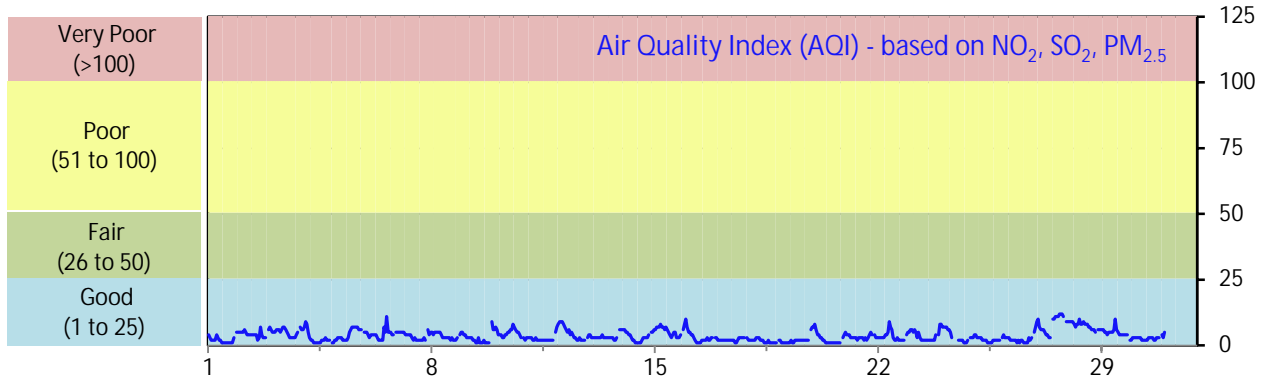
*2 hours of data flagged as "power failure" for NO/NO₂/NO_x due to power issues.

*Routine quarterly calibrations were completed on June 23, 2024.

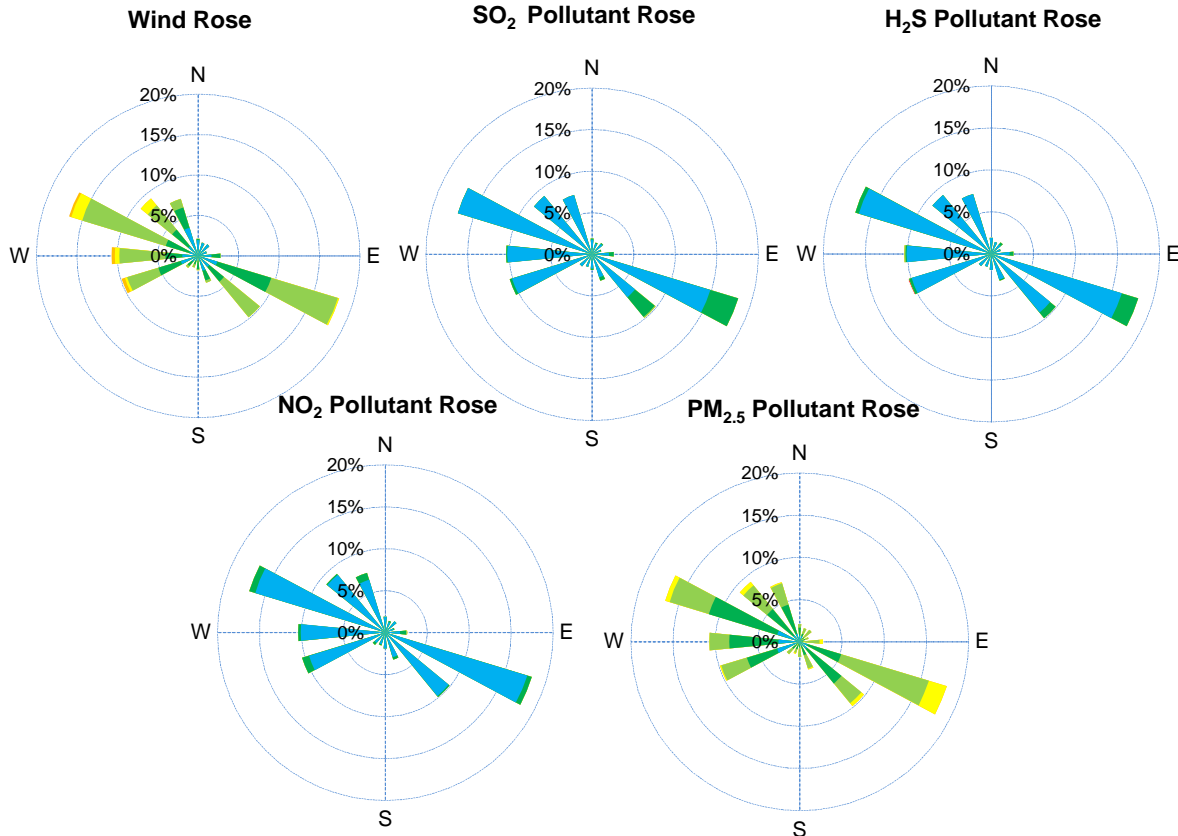
SESAA Stoughton Station - June 2024 Summary Report

Pollutants		Month Records		24-Hour Records				1-Hour Records			
Name	Conc. Unit	Avg. Conc.	Uptime	Maximum		SAAQS Standard	Exceed Days	Maximum		SAAQS Standard	Exceed Hours
				Conc.	Time			Conc.	Time		
NO	ppb	0.4	99.9%	1.2	Jun-14	-	-	8.3	Jun-14 05:00	-	-
NO ₂	ppb	1.4	99.9%	3.6	Jun-14	106	0	16.1	Jun-11 21:00	159	0
NO _x	ppb	1.7	99.9%	4.8	Jun-14	-	-	17.4	Jun-11 21:00	-	-
SO ₂	ppb	0.3	100.0%	2.0	Jun-21	48	0	6.4	Jun-21 09:00	172	0
H ₂ S	ppb	0.3	99.9%	1.3	Jun-21	3.6	0	17.8	Jun-08 06:00	11	1
PM _{2.5}	ug/m3	4.5	100.0%	9.9	Jun-27	28	0	15.0	Jun-27 17:00	-	-

SAAQS: Saskatchewan Ambient Air Quality Standards



SESAA Stoughton Station - June 2024 Summary Report



Parameters	Unit	Color Code for Wind Spd & Pollutant Conc. Class						
Wind Speed	m/s	0.3 ≤ WS < 1.4	1.4 ≤ WS < 3.1	3.1 ≤ WS < 7.8	7.8 ≤ WS < 10.8	10.8 ≤ WS < 13.6	WS ≥ 13.6	
SO ₂	ppb	0 ≤ C < 1	1 ≤ C < 5	5 ≤ C < 10	10 ≤ C < 57	57 ≤ C < 172	C ≥ 172	
NO ₂	ppb	0 ≤ C < 5	5 ≤ C < 15	15 ≤ C < 30	30 ≤ C < 100	100 ≤ C < 212	C ≥ 212	
H ₂ S	ppb	0 ≤ C < 1	1 ≤ C < 3.6	3.6 ≤ C < 5	5 ≤ C < 8	8 ≤ C < 10.8	C ≥ 10.8	
PM _{2.5}	ug/m ³	0 ≤ C < 2	2 ≤ C < 4	4 ≤ C < 10	10 ≤ C < 20	20 ≤ C < 30	C ≥ 30	

Monthly Update

- *All data has been slope, intercept, and baseline corrected. Data may change after validation process.
- *All compliance parameters were within the Saskatchewan Ambient Air Quality Standards, except for one 1-hour H₂S exceedance on June 8.
- *All compliance parameters were above 90% operational.
- *1 hour of data flagged as "power failure" for NO/NO₂/NO_x and H₂S due to power issues at the station.
- *Routine quarterly calibrations were completed on June 24, 2024.

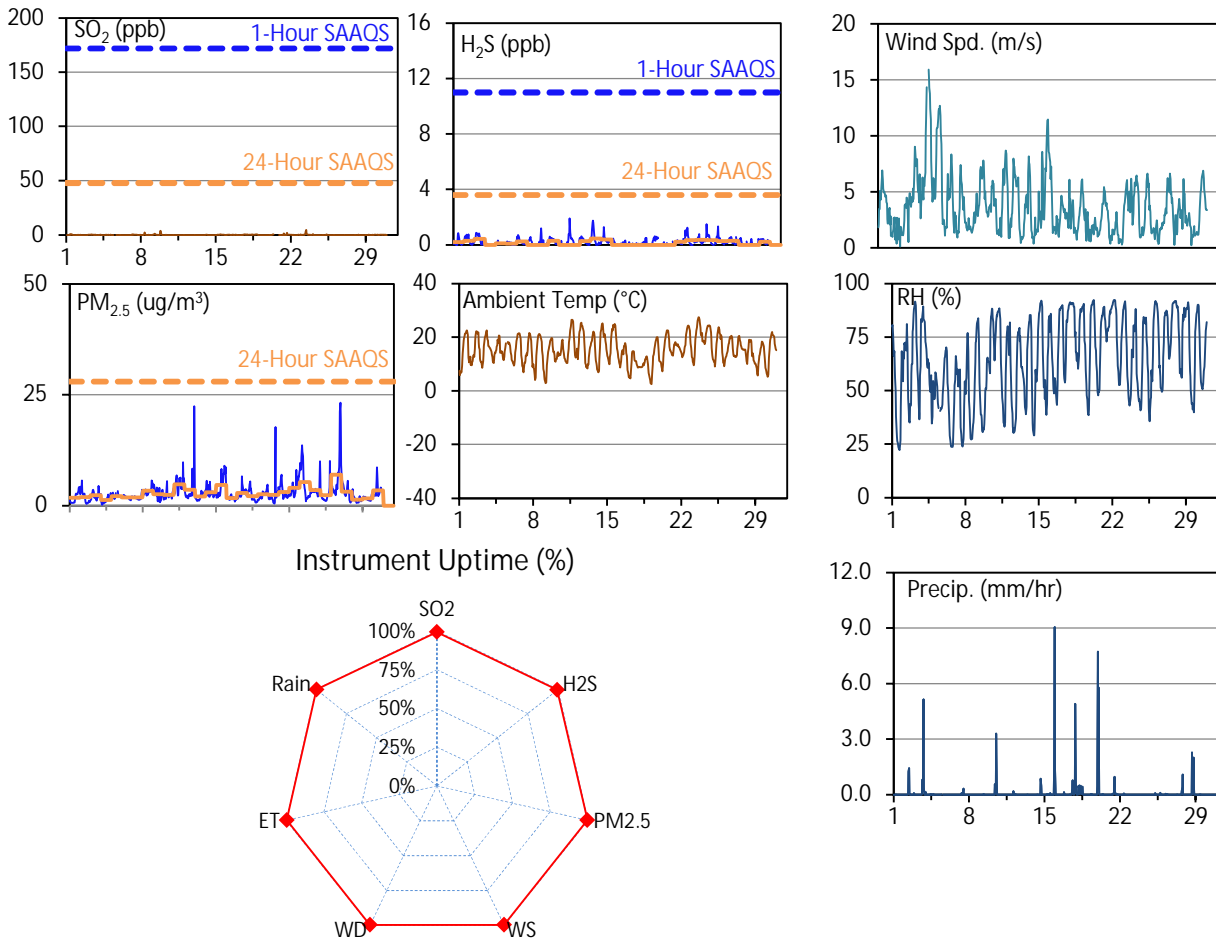
Exceedance Summary (1-Hour Average)

1-hour Exceedance Information			Summary of Other Parameters During Exceedance								
Pollutant	1-hr Avg Conc.	Exceedance Time	WS	WD	AQI	Rain	ET	SO ₂	NO ₂	H ₂ S	PM _{2.5}
		mmm-dd hh:mm	m/s	deg	-	mm	C	ppb	ppb	ppb	ug/m ³
H ₂ S	17.8	Jun-08 06:00	1.9	256	5	0.0	8.3	0.5	2.9	17.8	6

SESAA Torquay Station - June 2024 Summary Report

Pollutants		Month Records		24-Hour Records				1-Hour Records			
Name	Conc. Unit	Avg. Conc.	Uptime	Maximum		SAAQS Standard	Exceed Days	Maximum		SAAQS Standard	Exceed Hours
				Conc.	Time			Conc.	Time		
SO ₂	ppb	0.1	99.3%	0.2	Jun-18	48	0	4.8	Jun-23 10:00	172	0
H ₂ S	ppb	0.2	99.3%	0.5	Jun-14	3.6	0	1.9	Jun-12 00:00	11	0
PM _{2.5}	ug/m3	2.8	99.6%	7.0	Jun-26	28	0	23.2	Jun-26 21:00	-	-

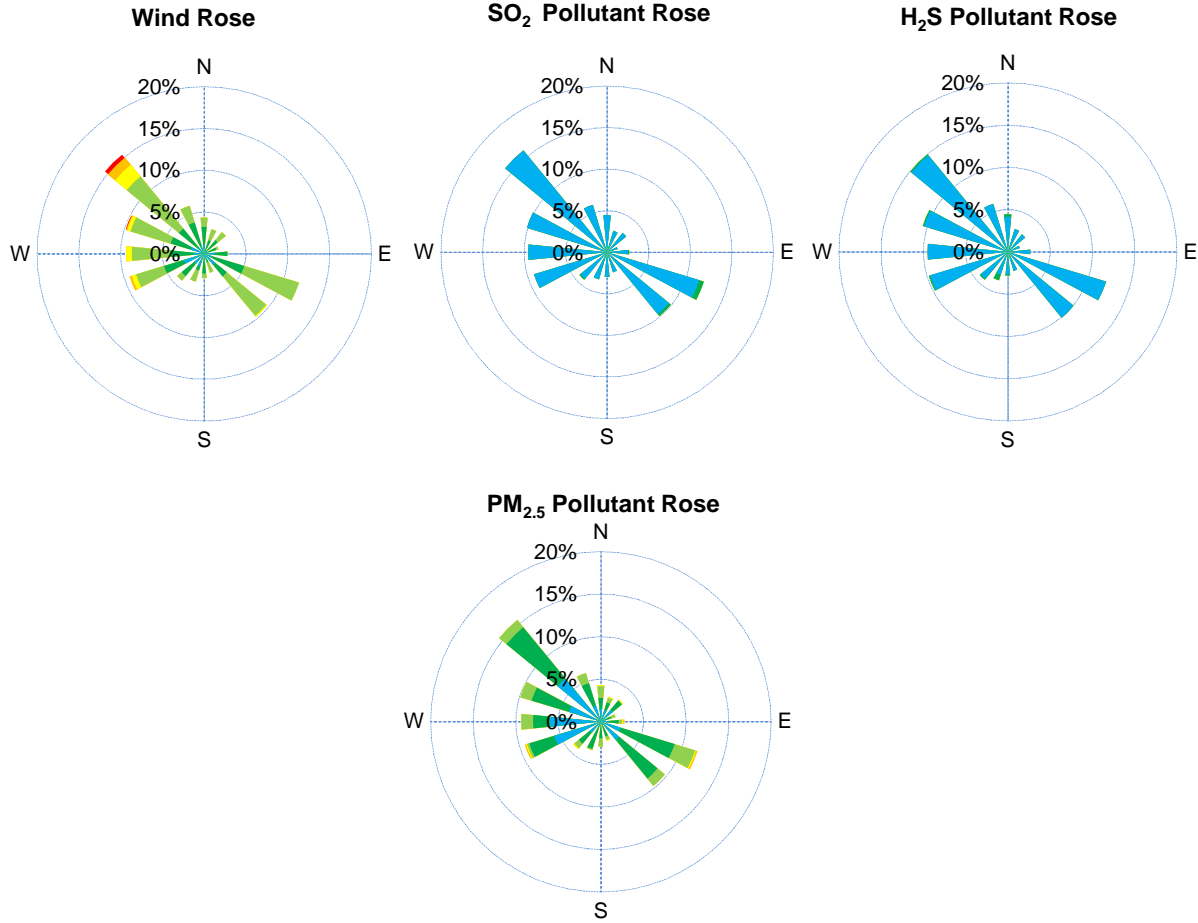
SAAQS: Saskatchewan Ambient Air Quality Standards



Monthly Update

- *All data has been slope, intercept, and baseline corrected. Data may change after validation process.
- *All compliance parameters were within the Saskatchewan Ambient Air Quality Standards.
- *All compliance parameters had greater than 90% operational uptime.
- *3-5 hours of data for the whole station flagged as "power failure" due to power issues causing flatlined data.
- *Routine quarterly calibrations were completed on June 20, 2024.

SESAA Torquay Station - June 2024 Summary Report

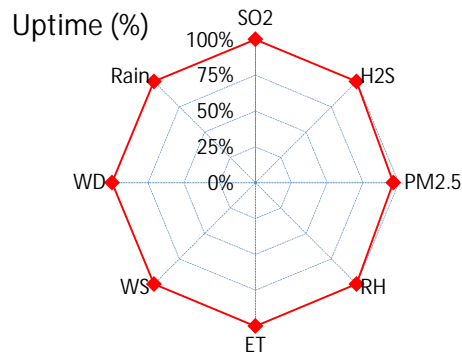
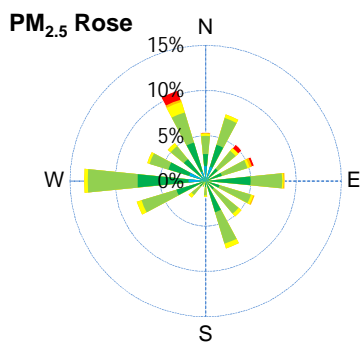
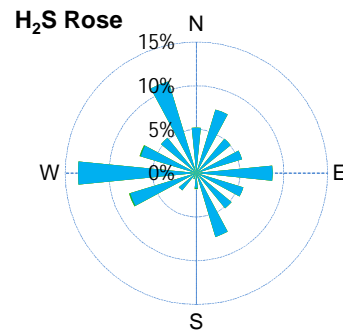
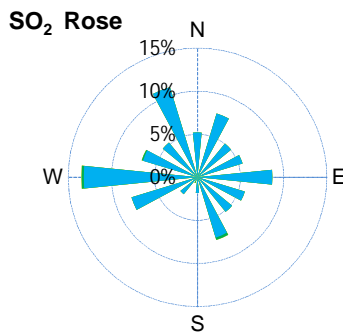
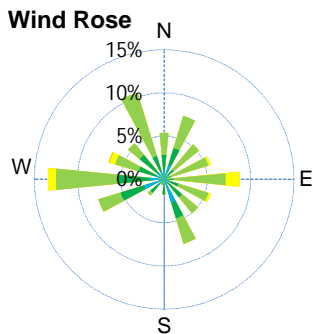
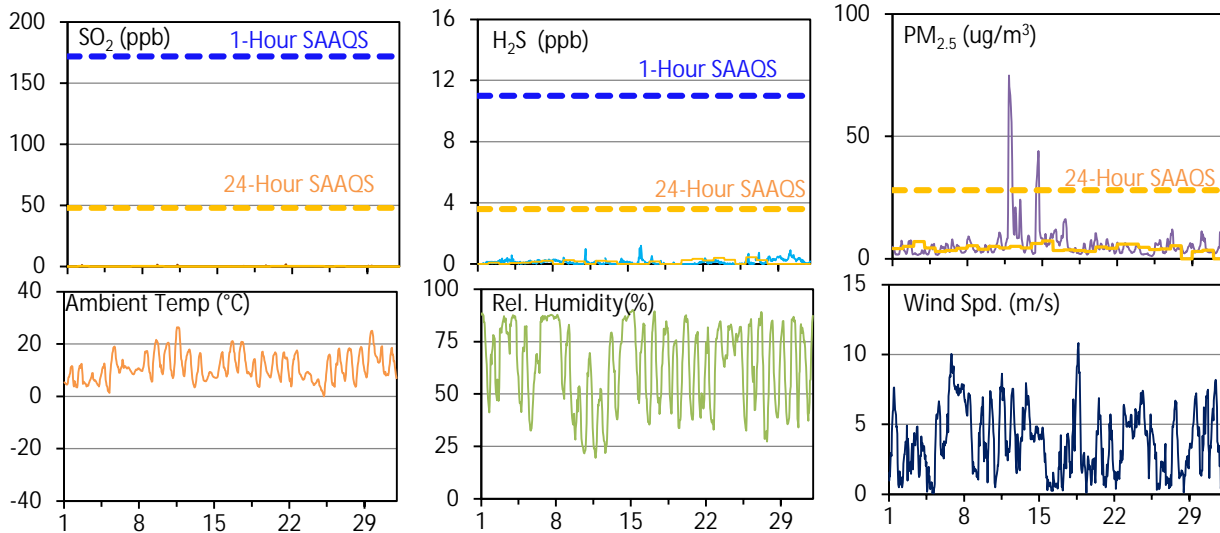


Parameters	Unit	Color Code for Wind Spd & Pollutant Conc. Class							
		0.3 ≤ WS < 1.4	1.4 ≤ WS < 3.1	3.1 ≤ WS < 7.8	7.8 ≤ WS < 10.8	10.8 ≤ WS < 13.6	13.6 ≤ WS < 17.2	17.2 ≤ WS < 21.2	WS ≥ 13.6
SO ₂	ppb	0 ≤ C < 1	1 ≤ C < 5	5 ≤ C < 10	10 ≤ C < 57	57 ≤ C < 172	172 ≤ C < 212	212 ≤ C < 252	C ≥ 212
NO ₂	ppb	0 ≤ C < 5	5 ≤ C < 15	15 ≤ C < 30	30 ≤ C < 100	100 ≤ C < 212	212 ≤ C < 252	252 ≤ C < 300	C ≥ 212
O ₃	ppb	0 ≤ C < 10	10 ≤ C < 20	20 ≤ C < 40	40 ≤ C < 60	60 ≤ C < 82	82 ≤ C < 100	100 ≤ C < 120	C ≥ 82
H ₂ S	ppb	0 ≤ C < 1	1 ≤ C < 3.6	3.6 ≤ C < 5	5 ≤ C < 8	8 ≤ C < 10.8	10.8 ≤ C < 13.6	13.6 ≤ C < 17.2	C ≥ 10.8
PM _{2.5}	ug/m ³	0 ≤ C < 2	2 ≤ C < 4	4 ≤ C < 10	10 ≤ C < 20	20 ≤ C < 30	30 ≤ C < 40	40 ≤ C < 50	C ≥ 30

SESAA Wauchope Station - June 2024 Summary Report

Pollutants		Month Records		24-Hour Records				1-Hour Records			
Name	Conc. Unit	Avg. Conc.	Uptime	Maximum		SAAQS Objective	Exceed Days	Maximum		SAAQS Objective	Exceed Hours
				Conc.	Time			Conc.	Time		
SO ₂	ppb	0.1	100.0%	0.4	Jun-2	48	0	1.8	Jun-21 10:00	172	0
H ₂ S	ppb	0.1	100.0%	0.4	Jun-26	3.6	0	1.2	Jun-16 05:00	11	0
PM _{2.5}	ug/m3	6.0	96.3%	7.3	Jun-15	28	0	75.0	Jun-11 21:00	-	-

SAAQS: Saskatchewan Ambient Air Quality Standards



SESAA Wauchope Station - June 2024 Summary Report

Parameters	Unit	Color Code for Wind Spd & Pollutant Conc. Class					
Wind Speed	m/s	0.3 ≤ WS < 1.4	1.4 ≤ WS < 3.1	3.1 ≤ WS < 7.8	7.8 ≤ WS < 10.8	10.8 ≤ WS < 13.6	WS ≥ 13.6
SO ₂	ppb	0 ≤ C < 1	1 ≤ C < 5	5 ≤ C < 10	10 ≤ C < 57	57 ≤ C < 172	C ≥ 172
H ₂ S	ppb	0 ≤ C < 1	1 ≤ C < 3.6	3.6 ≤ C < 5	5 ≤ C < 8	8 ≤ C < 10.8	C ≥ 10.8
PM _{2.5}	ug/m ³	0 ≤ C < 2	2 ≤ C < 4	4 ≤ C < 10	10 ≤ C < 20	20 ≤ C < 30	C ≥ 30

Monthly Update

*All data has been slope, intercept, and baseline corrected. Data may change after validation process.

*All compliance parameters were within the Saskatchewan Ambient Air Quality Standards.

*All compliance parameters were greater than 90% operational.

*27 hours of data for PM_{2.5} flagged as "analyzer failure" due to a plateau of high values.

*Routine quarterly calibrations were completed on June 18, 2024.

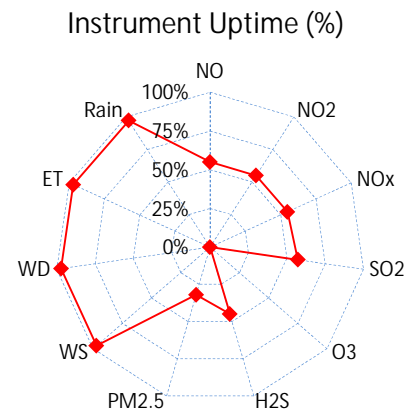
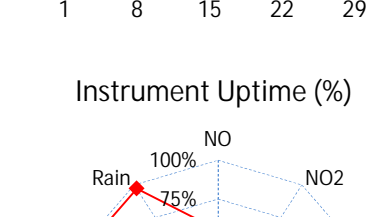
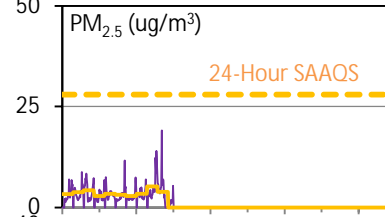
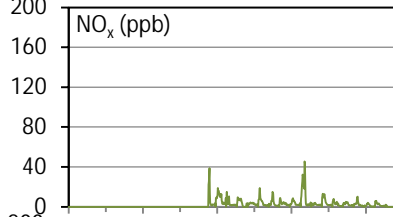
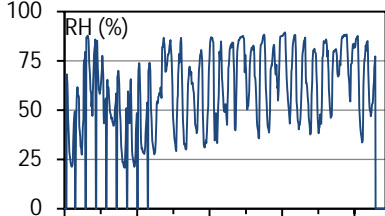
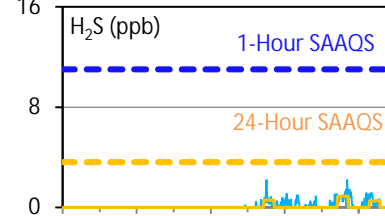
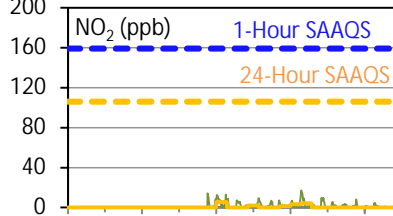
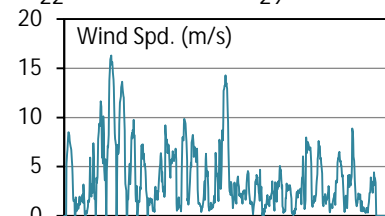
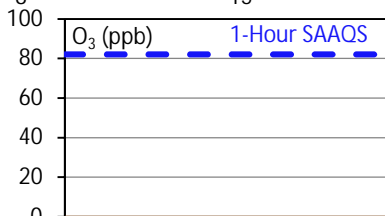
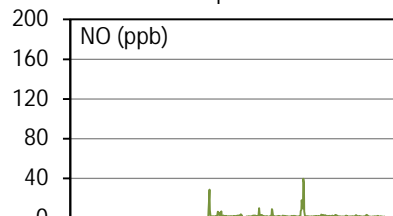
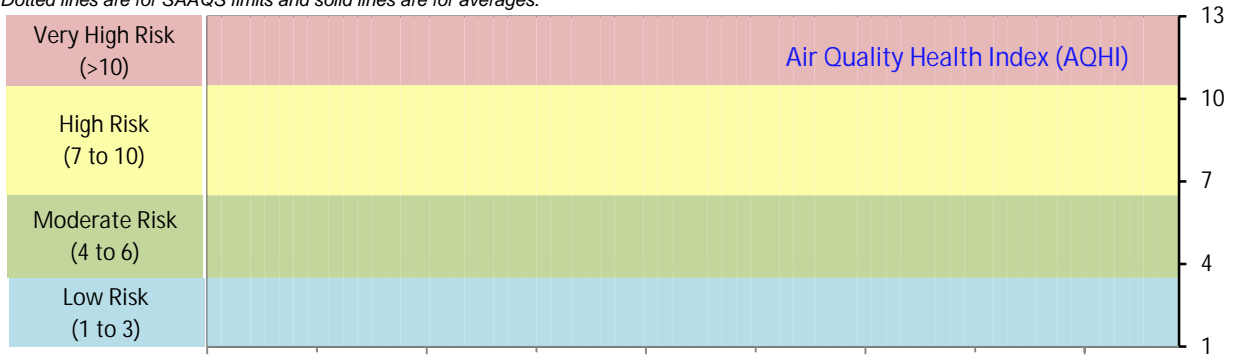
SESAA Weyburn Station - June 2024 Summary Report

Pollutants		Month Records		24-Hour Records				1-Hour Records			
				Maximum		SAAQS Standard	Exceed Days	Maximum		SAAQS Standard	Exceed Hours
				Conc.	Time			Conc.	Time		
Name	Conc. Unit	Avg. Conc.	Uptime	Conc.	Time	Standard	Days	Conc.	Time	Standard	Hours
NO	ppb	2.5	54.9%	7.3	Jun-23	-	-	39.5	Jun-23 05:00	-	-
NO ₂	ppb	2.1	54.9%	5.4	Jun-15	106	0	17.0	Jun-23 00:00	159	0
NO _x	ppb	4.4	54.9%	11.5	Jun-23	-	-	45.5	Jun-23 05:00	-	-
SO ₂	ppb	0.3	57.2%	0.9	Jun-20	48	0	11.1	Jun-23 08:00	172	0
O ₃	ppb	-	0.0%	< 0.1	-	-	-	< 0.1	-	82	0
H ₂ S	ppb	0.3	45.0%	0.9	Jun-27	3.6	0	2.2	Jun-27 21:00	11	0
PM _{2.5}	ug/m3	3.5	32.1%	5.2	Jun-9	28	0	19.1	Jun-10 09:00	-	-

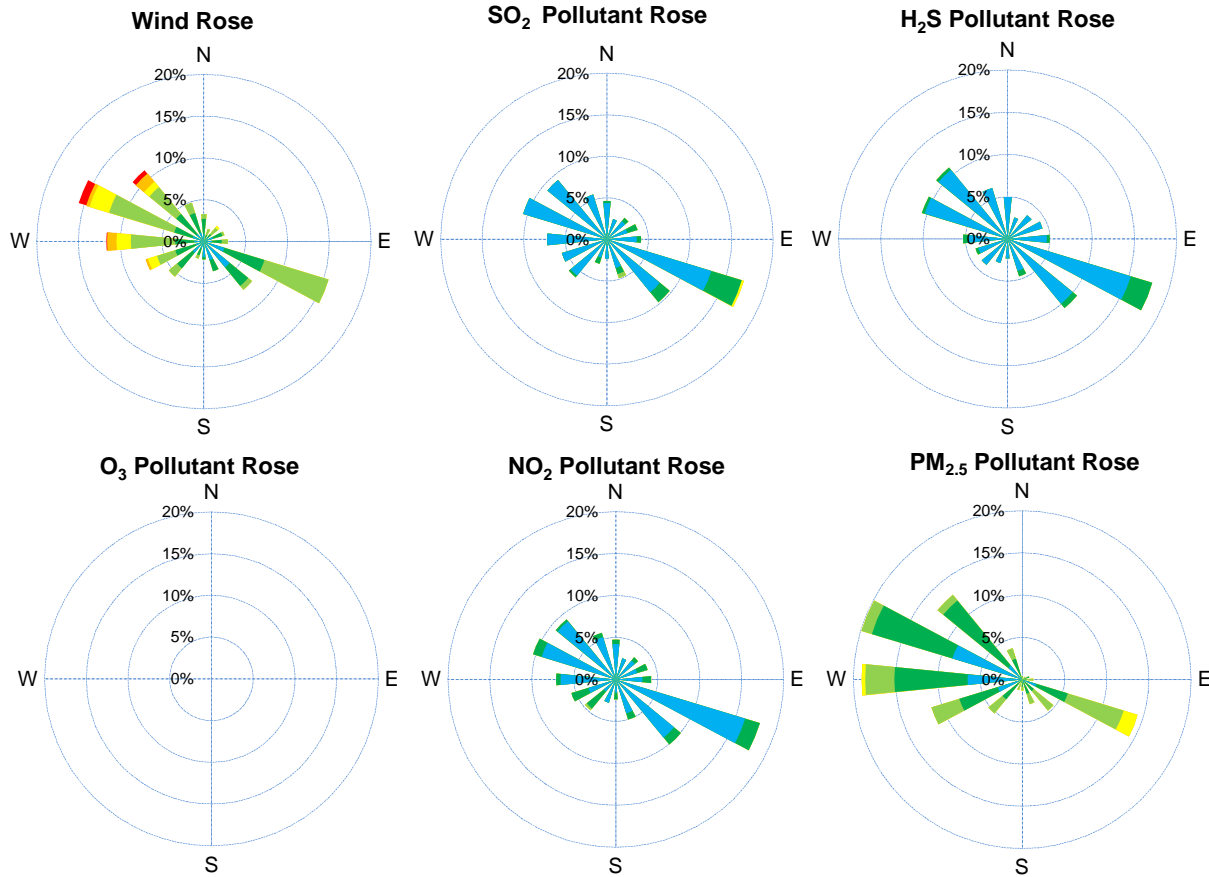
SAAQS: Saskatchewan Ambient Air Quality Standards

* Air Quality Standard refers to Saskatchewan Ambient Air Quality Standards (SAAQS).

* Dotted lines are for SAAQS limits and solid lines are for averages.



SESAA Weyburn Station - June 2024 Summary Report



Parameters	Unit	Color Code for Wind Spd & Pollutant Conc. Class						
Wind Speed	m/s	$0.3 \leq WS < 1.4$	$1.4 \leq WS < 3.1$	$3.1 \leq WS < 7.8$	$7.8 \leq WS < 10.8$	$10.8 \leq WS < 13.6$	$WS \geq 13.6$	
SO ₂	ppb	$0 \leq C < 1$	$1 \leq C < 5$	$5 \leq C < 10$	$10 \leq C < 57$	$57 \leq C < 172$	$C \geq 172$	
NO ₂	ppb	$0 \leq C < 5$	$5 \leq C < 15$	$15 \leq C < 30$	$30 \leq C < 100$	$100 \leq C < 212$	$C \geq 212$	
O ₃	ppb	$0 \leq C < 10$	$10 \leq C < 20$	$20 \leq C < 40$	$40 \leq C < 60$	$60 \leq C < 82$	$C \geq 82$	
H ₂ S	ppb	$0 \leq C < 1$	$1 \leq C < 3.6$	$3.6 \leq C < 5$	$5 \leq C < 8$	$8 \leq C < 10.8$	$C \geq 10.8$	
PM _{2.5}	ug/m ³	$0 \leq C < 2$	$2 \leq C < 4$	$4 \leq C < 10$	$10 \leq C < 20$	$20 \leq C < 30$	$C \geq 30$	

Monthly Update

- *All data has been slope, intercept, and baseline corrected. Data may change after validation process.
- *All compliance parameters were within the Saskatchewan Ambient Air Quality Standards.
- *All compliance parameters were below 90% operational due to HVAC issues.
- *291-720 hours of data for the whole station flagged as "HVAC failure" due to issues with the A/C unit. Station was replaced on June 1.
- *Install calibrations occurred on June 13, 2024 and June 17, 2024.
- *O3 analyzer was removed from service as it does not fit inside the new station.
- *8-25 hours of data flagged as "analyzer failure" for analyzers due to flatlined data.
- *489 hours of PM2.5 data flagged as "analyzer failure" due to missing data from June 11 - June 30.