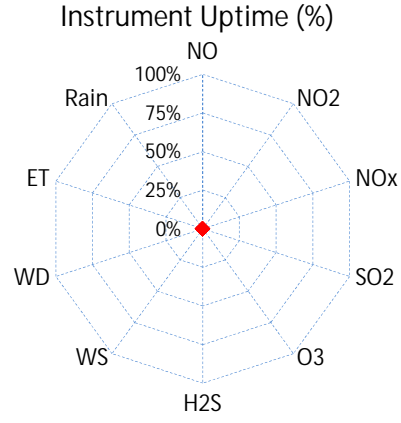
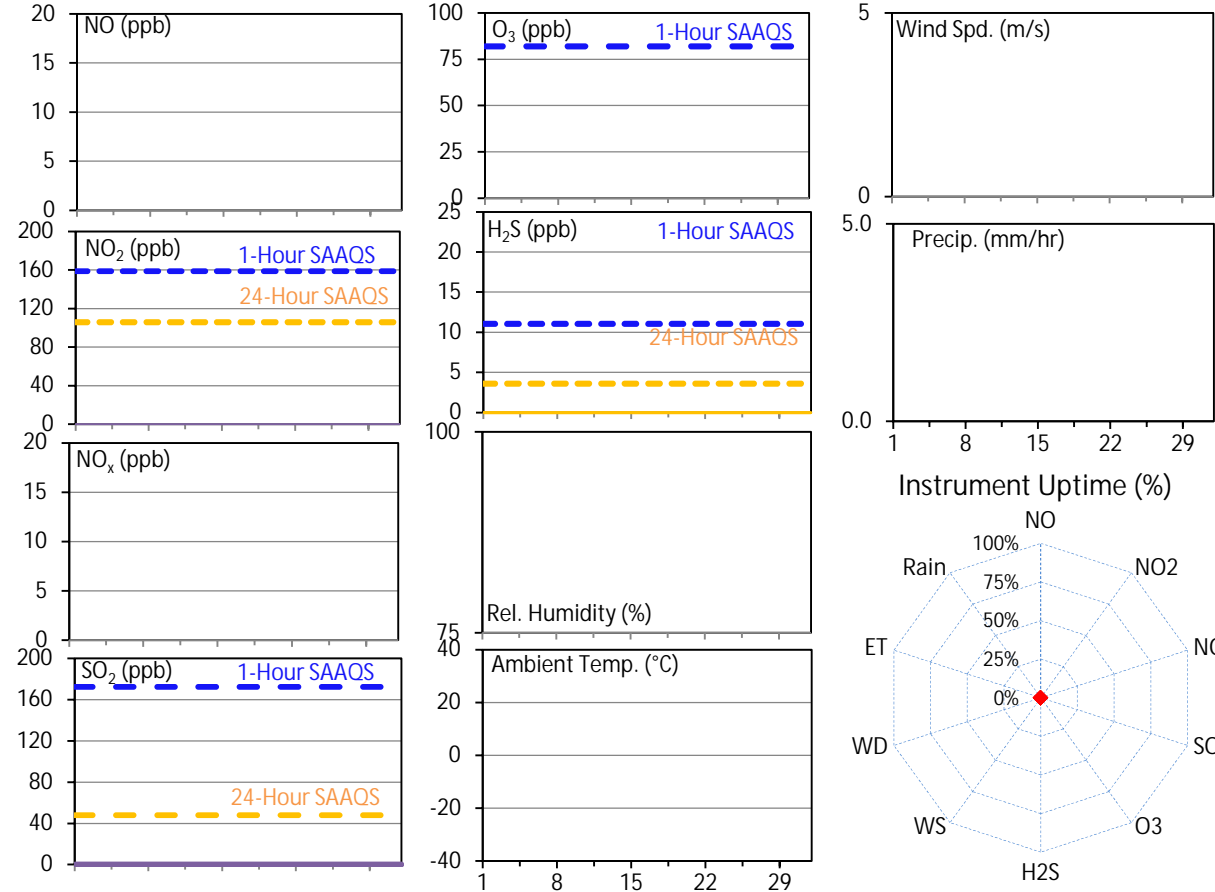
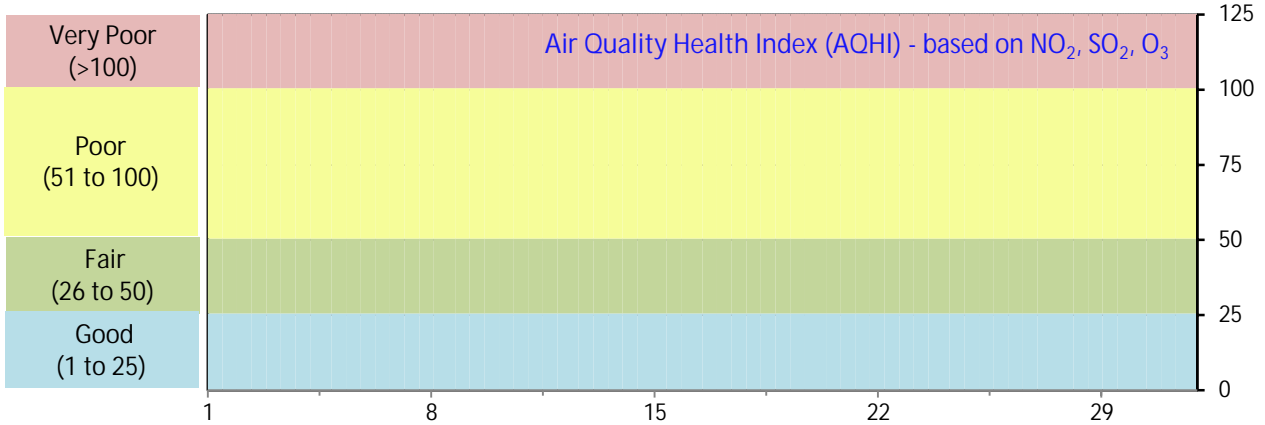


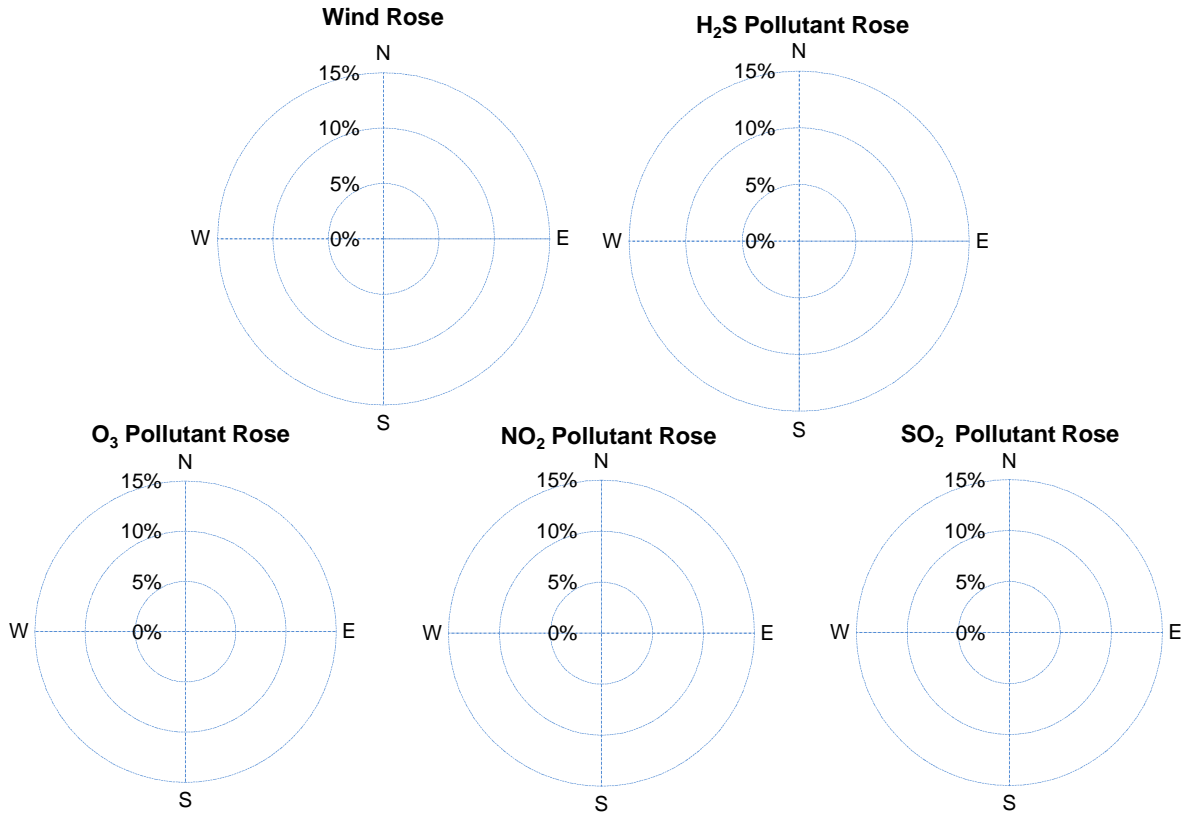
SESAA Glen Ewen Station - August 2024 Summary Report

Pollutants		Month Records		24-Hour Records				1-Hour Records			
Name	Conc. Unit	Avg. Conc.	Uptime	Maximum		SAAQS Standard	Exceed Days	Maximum		SAAQS Standard	Exceed Hours
				Conc.	Time			Conc.	Time		
NO	ppb	-	0.0%	< 0.1	-	-	-	< 0.1	-	-	-
NO ₂	ppb	-	0.0%	< 0.1	-	106	0	< 0.1	-	159	0
NO _x	ppb	-	0.0%	< 0.1	-	-	-	< 0.1	-	-	-
SO ₂	ppb	-	0.0%	< 0.1	-	48	0	< 0.1	-	172	0
O ₃	ppb	-	0.0%	< 0.1	-	-	-	< 0.1	-	82	0
H ₂ S	ppb	-	0.0%	< 0.1	-	3.6	0	< 0.1	-	11	0

SAAQS: Saskatchewan Ambient Air Quality Standards



SESAA Glen Ewen Station - August 2024 Summary Report



Parameters	Unit	Color Code for Wind Spd & Pollutant Conc. Class						
Wind Speed	m/s	0.3 ≤ WS < 1.4	1.4 ≤ WS < 3.1	3.1 ≤ WS < 7.8	7.8 ≤ WS < 10.8	10.8 ≤ WS < 13.6	WS ≥ 13.6	
SO ₂	ppb	0 ≤ C < 1	1 ≤ C < 5	5 ≤ C < 10	10 ≤ C < 57	57 ≤ C < 172	C ≥ 172	
NO ₂	ppb	0 ≤ C < 5	5 ≤ C < 15	15 ≤ C < 30	30 ≤ C < 100	100 ≤ C < 212	C ≥ 212	
O ₃	ppb	0 ≤ C < 10	10 ≤ C < 20	20 ≤ C < 40	40 ≤ C < 60	60 ≤ C < 82	C ≥ 82	
H ₂ S	ppb	0 ≤ C < 1	1 ≤ C < 3.6	3.6 ≤ C < 5	5 ≤ C < 8	8 ≤ C < 10.8	C ≥ 10.8	

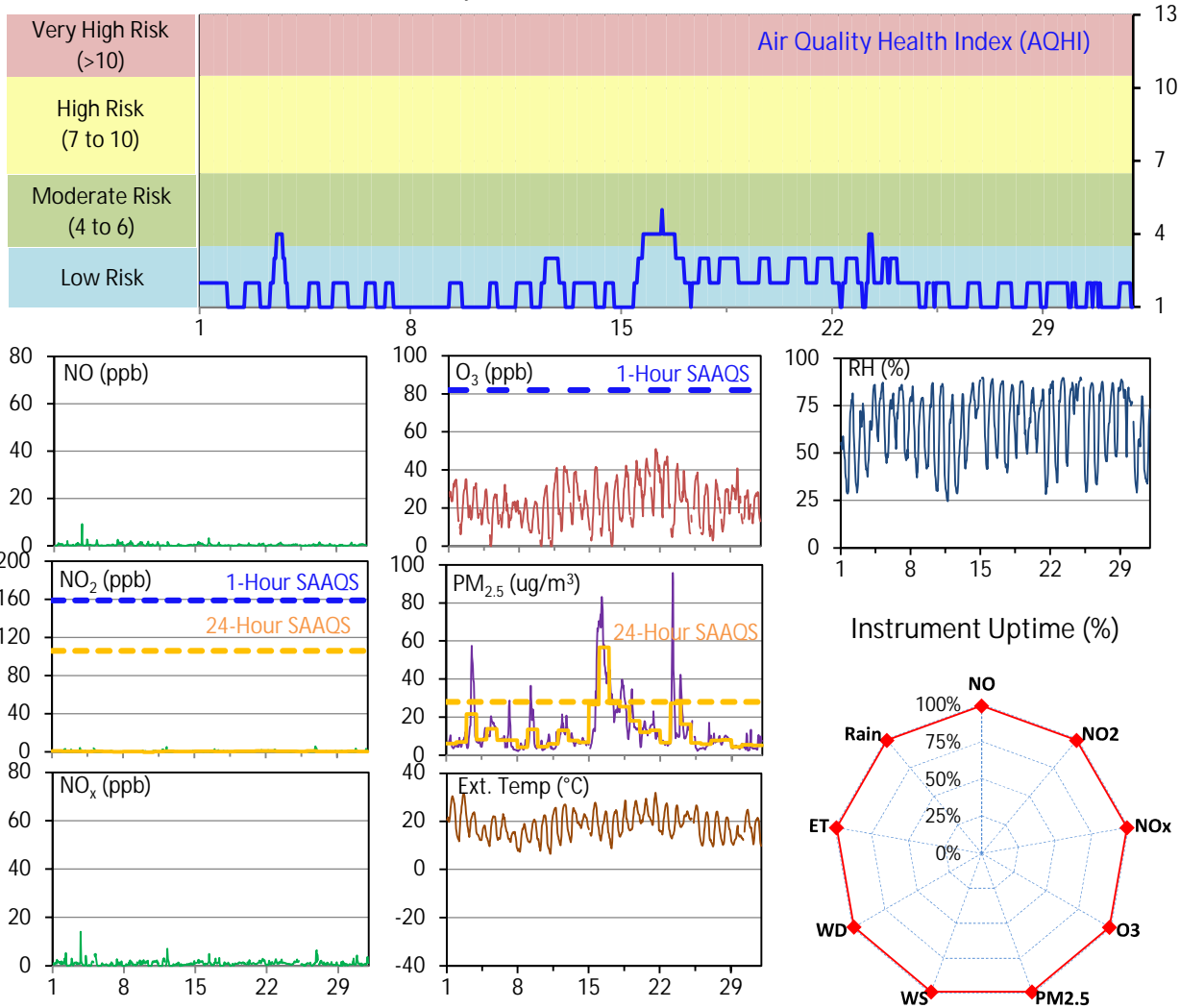
Monthly Update

*No data was provided to WSP to complete the August Dashboard.
 *WSP is not responsible for the maintenance of this Station and therefore the dashboard was not senior reviewed by operations.

SESAA Esterhazy Station - August 2024 Summary Report

Pollutants		Month Records		24-Hour Records				1-Hour Records			
Name	Conc. Unit	Avg. Conc.	Uptime	Maximum		SAAQS Standard	Exceed Days	Maximum		SAAQS Standard	Exceed Hours
				Conc.	Time			Conc.	Time		
NO	ppb	0.4	99.1%	0.8	Aug-3	-	-	9.3	Aug-03 18:00	-	-
NO ₂	ppb	0.5	99.1%	1.0	Aug-21	106	0	5.8	Aug-26 21:00	159	0
NO _x	ppb	1.0	99.1%	1.6	Aug-21	-	-	14.1	Aug-03 18:00	-	-
O ₃	ppb	23.0	99.1%	36.0	Aug-21	-	-	51.1	Aug-21 14:00	82	0
PM _{2.5}	ug/m3	12.9	98.9%	56.7	Aug-16	28	1	95.8	Aug-23 05:00	-	-

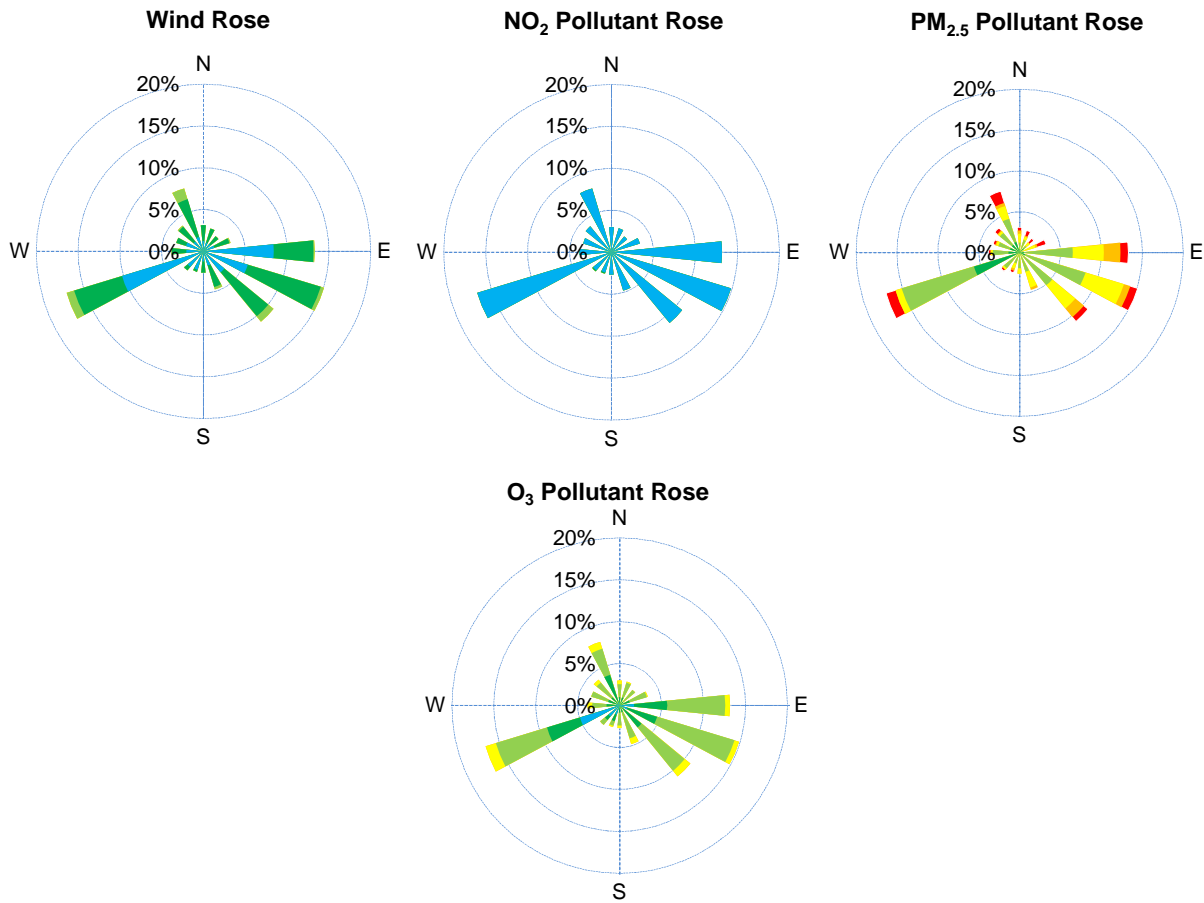
SAAQS: Saskatchewan Ambient Air Quality Standards



Monthly Update

- *All data has been slope, intercept, and baseline corrected. Data may change after validation process.
- *All compliance parameters were within the Saskatchewan Ambient Air Quality Standards with the exception of one 24-hour PM2.5 exceedance associated with wildfire smoke in the area.
- *All compliance parameters were above 90% operational.
- *4 hours of data for all analyzers flagged as "power failure" due to power issues at the site.
- *3-4 hours of data for all parameters flagged as "logging failure" due to issues with data logging resulting in missing data.
- *WSP is not responsible for the maintenance of this Station and therefore the dashboard was not senior reviewed by operations.

SESAA Esterhazy Station - August 2024 Summary Report



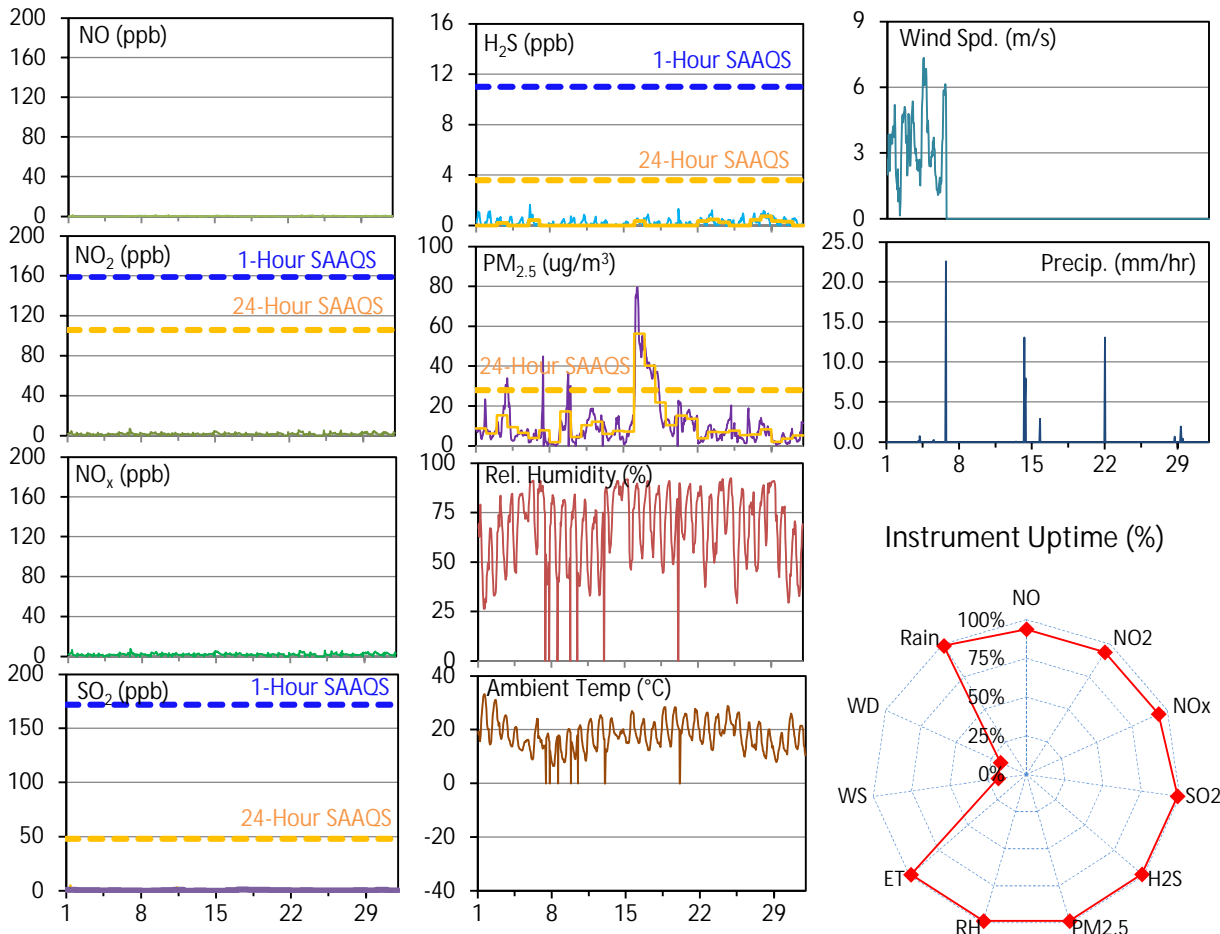
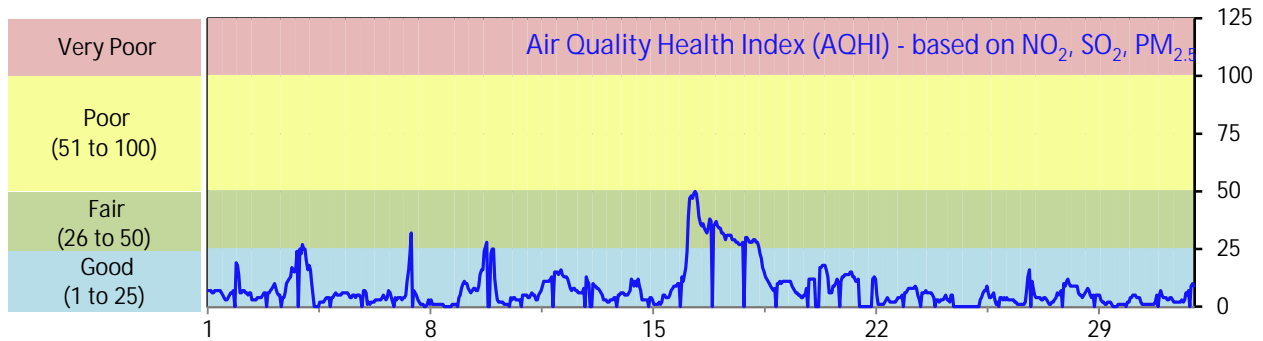
Parameters	Unit	Color Code for Wind Spd & Pollutant Conc. Class					
Wind Speed	m/s	$0.3 \leq WS < 1.4$	$1.4 \leq WS < 3.1$	$3.1 \leq WS < 7.8$	$7.8 \leq WS < 10.8$	$10.8 \leq WS < 13.6$	$WS \geq 13.6$
NO ₂	ppb	$0 \leq C < 5$	$5 \leq C < 15$	$15 \leq C < 30$	$30 \leq C < 100$	$100 \leq C < 212$	$C \geq 212$
PM _{2.5}	ug/m ³	$0 \leq C < 2$	$2 \leq C < 4$	$4 \leq C < 10$	$10 \leq C < 20$	$20 \leq C < 30$	$C \geq 30$
O ₃	ppb	$0 \leq C < 10$	$10 \leq C < 20$	$20 \leq C < 40$	$40 \leq C < 60$	$60 \leq C < 82$	$C \geq 82$

Exceedance Summary (24-Hour Average)											
24-hour Exceedance Information			Summary of Other Parameters During Exceedance								
Pollutant	Conc. ppb	Exceedance Date mmm-dd	WS m/s	WD deg	AQHI -	Rain mm	NO ppb	NO ₂ ppb	NO _x ppb	O ₃ ppb	PM _{2.5} ug/m ³
PM _{2.5}	56.7	Aug-16	1.2	160.8	3.8	0.0	0.5	0.4	1.2	20.1	56.7

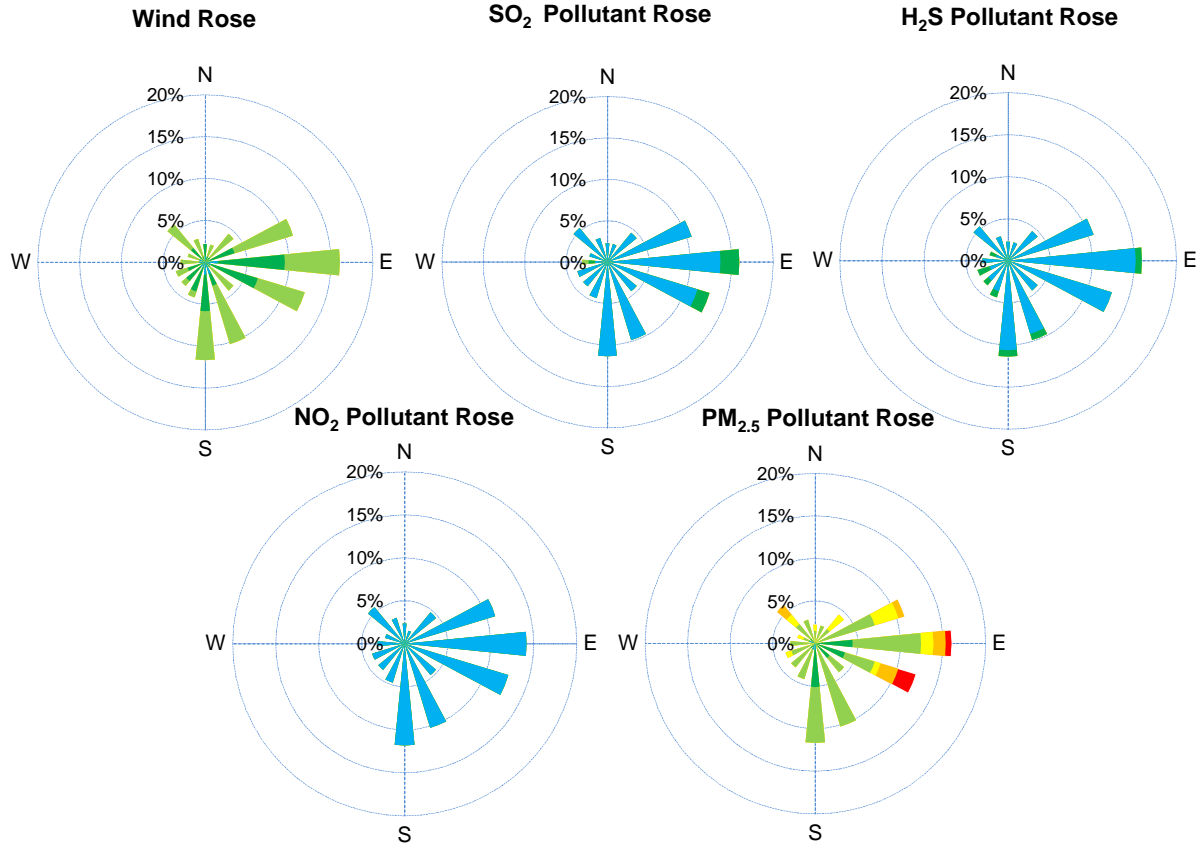
SESAA Oxbow Station - August 2024 Summary Report

Pollutants		Month Records		24-Hour Records				1-Hour Records			
Name	Conc. Unit	Avg. Conc.	Uptime	Maximum		SAAQS Standard	Exceed Days	Maximum		SAAQS Standard	Exceed Hours
				Conc.	Time			Conc.	Time		
NO	ppb	0.2	93.8%	0.5	Aug-15	-	-	1.5	Aug-01 09:00	-	-
NO ₂	ppb	1.9	93.8%	2.7	Aug-6	106	0	7.1	Aug-06 21:00	159	0
NO _x	ppb	2.2	93.8%	3.1	Aug-6	-	-	7.8	Aug-06 21:00	-	-
SO ₂	ppb	0.4	98.7%	1.1	Aug-17	48	0	5.4	Aug-01 09:00	172	0
H ₂ S	ppb	0.3	98.7%	0.8	Aug-28	3.6	0	1.7	Aug-06 02:00	11	0
PM _{2.5}	ug/m3	10.9	98.8%	56.3	Aug-16	28	2	79.6	Aug-16 07:00	-	-

SAAQS: Saskatchewan Ambient Air Quality Standards



SESAA Oxbow Station - August 2024 Summary Report



Parameters	Unit	Color Code for Wind Spd & Pollutant Conc. Class						
Wind Speed	m/s	0.3 ≤ WS < 1.4	1.4 ≤ WS < 3.1	3.1 ≤ WS < 7.8	7.8 ≤ WS < 10.8	10.8 ≤ WS < 13.6	WS ≥ 13.6	
SO ₂	ppb	0 ≤ C < 1	1 ≤ C < 5	5 ≤ C < 10	10 ≤ C < 57	57 ≤ C < 172	C ≥ 172	
NO ₂	ppb	0 ≤ C < 5	5 ≤ C < 15	15 ≤ C < 30	30 ≤ C < 100	100 ≤ C < 212	C ≥ 212	
H ₂ S	ppb	0 ≤ C < 1	1 ≤ C < 3.6	3.6 ≤ C < 5	5 ≤ C < 8	8 ≤ C < 10.8	C ≥ 10.8	
PM _{2.5}	ug/m ³	0 ≤ C < 2	2 ≤ C < 4	4 ≤ C < 10	10 ≤ C < 20	20 ≤ C < 30	C ≥ 30	

Monthly Update

- *All data has been slope, intercept, and baseline corrected. Data may change after validation process.
- *All compliance parameters were within the Saskatchewan Ambient Air Quality Standards, with the exception of two 24-hour PM_{2.5} exceedances, which can be attributed to wildfires in the area.
- *All compliance parameters were greater than 90% operational.
- *33 hours of data flagged as "analyzer failure" for NO/NO₂/NO_x due to large negative/positive spikes.
- *607 hours of data flagged as "analyzer failure" for WD/WS due to missing data. Data stopped Aug 6th.
- *2-5 hours of data flagged as "power failure" for the whole station due to power issues.
- *7-8 hours of data flagged as "Logging failure" for the whole station due to flat-lined missing data.
- *WSP is not responsible for the maintenance of this Station and therefore the dashboard was not senior reviewed by operations.

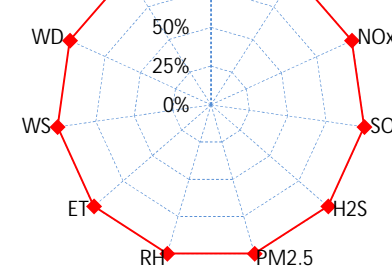
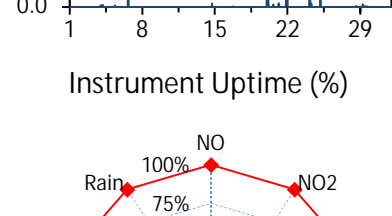
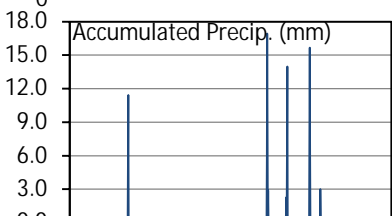
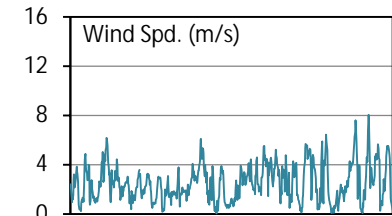
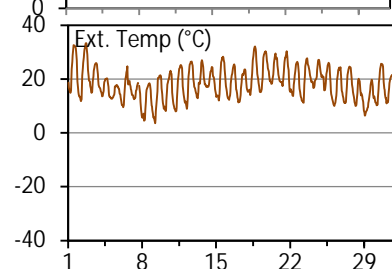
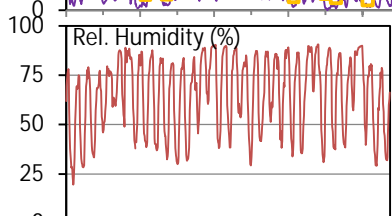
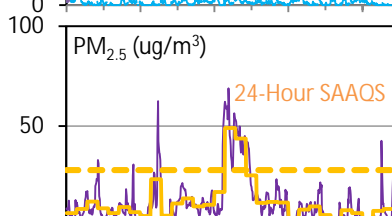
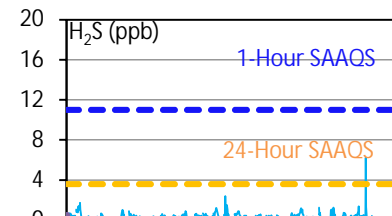
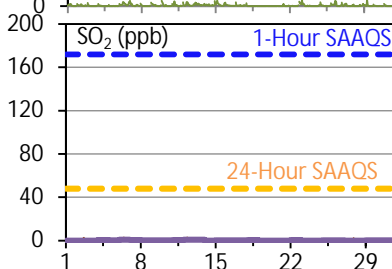
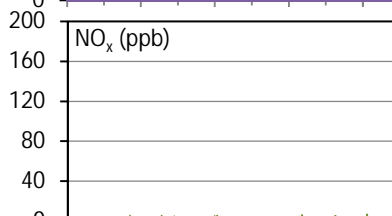
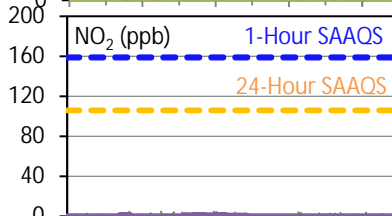
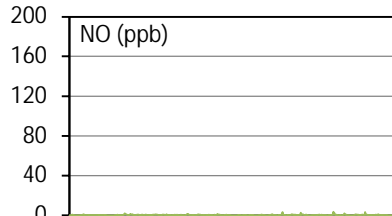
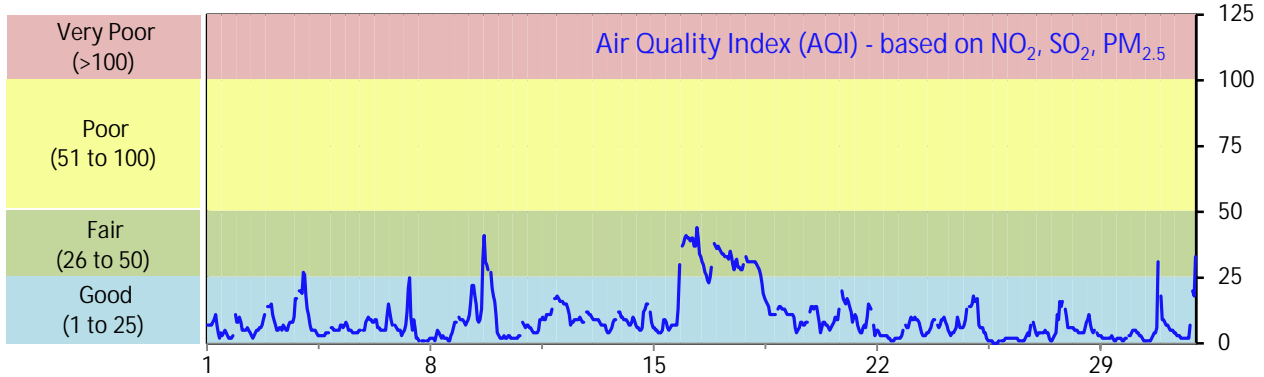
SESAA Oxbow Station - August 2024 Summary Report

Exceedance Summary											
24-hour Exceedance Information			Summary of Other Parameters During Exceedance								
Pollutant	24-hr Avg Conc.	Exceedance Date mmm-dd	WS m/s	WD deg	AQI -	Rain mm	ET C	SO ₂ ppb	NO ₂ ppb	H ₂ S ppb	PM _{2.5} ug/m ³
PM2.5	56.3	Aug-16	-	-	38.1	0.0	18.5	0.6	2.0	0.4	56.3
PM2.5	40.2	Aug-17	-	-	30.1	0.0	17.4	1.1	1.8	-	40.2

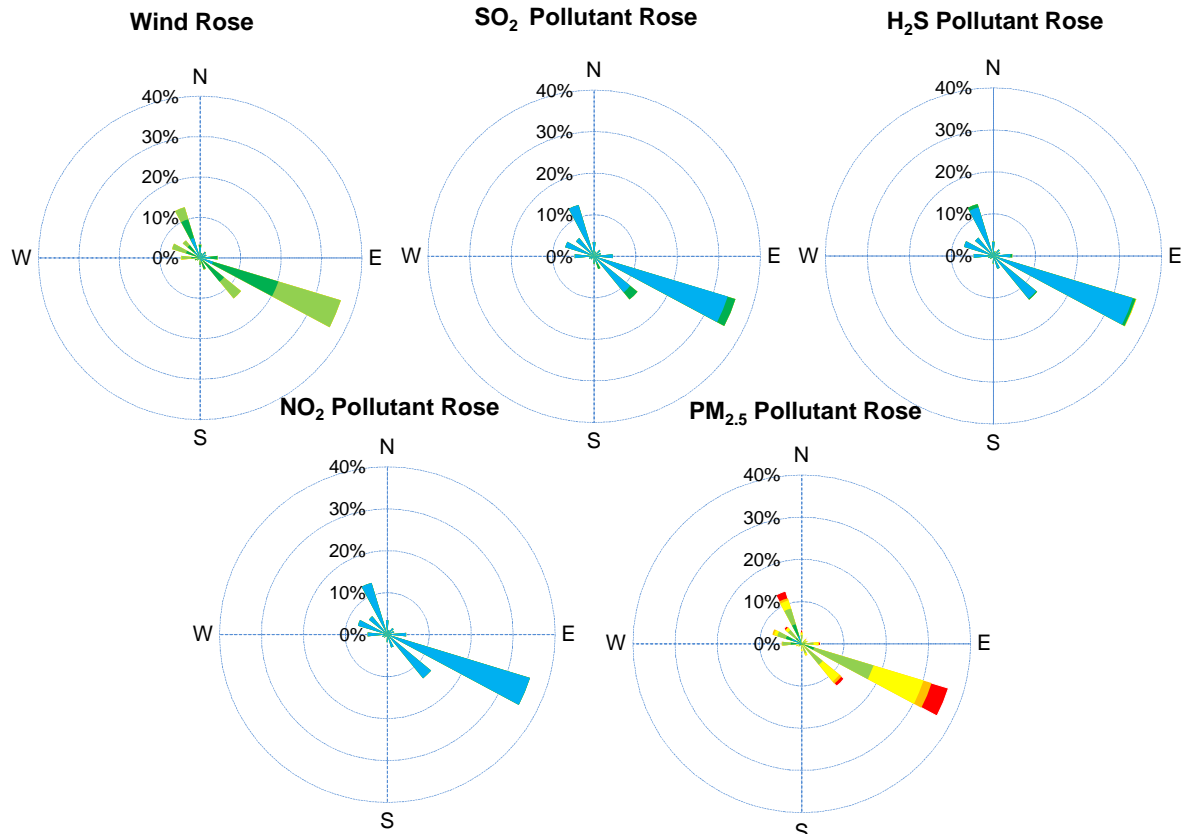
SESAA Stoughton Station - August 2024 Summary Report

Pollutants		Month Records		24-Hour Records				1-Hour Records			
Name	Conc. Unit	Avg. Conc.	Uptime	Maximum		SAAQS Standard	Exceed Days	Maximum		SAAQS Standard	Exceed Hours
				Conc.	Time			Conc.	Time		
NO	ppb	0.3	99.9%	0.6	Aug-6	-	-	3.6	Aug-26 06:00	-	-
NO ₂	ppb	0.5	99.9%	1.5	Aug-6	106	0	4.9	Aug-09 21:00	159	0
NO _x	ppb	0.7	99.9%	2.1	Aug-6	-	-	6.7	Aug-29 07:00	-	-
SO ₂	ppb	0.3	99.9%	0.9	Aug-13	48	0	3.0	Aug-06 10:00	172	0
H ₂ S	ppb	0.3	99.9%	0.6	Aug-29	3.6	0	6.3	Aug-29 07:00	11	0
PM _{2.5}	ug/m3	12.0	99.9%	49.2	Aug-16	28	2	68.9	Aug-16 08:00	-	-

SAAQS: Saskatchewan Ambient Air Quality Standards



SESAA Stoughton Station - August 2024 Summary Report



Parameters	Unit	Color Code for Wind Spd & Pollutant Conc. Class						
Wind Speed	m/s	0.3 ≤ WS < 1.4	1.4 ≤ WS < 3.1	3.1 ≤ WS < 7.8	7.8 ≤ WS < 10.8	10.8 ≤ WS < 13.6	WS ≥ 13.6	
SO ₂	ppb	0 ≤ C < 1	1 ≤ C < 5	5 ≤ C < 10	10 ≤ C < 57	57 ≤ C < 172	C ≥ 172	
NO ₂	ppb	0 ≤ C < 5	5 ≤ C < 15	15 ≤ C < 30	30 ≤ C < 100	100 ≤ C < 212	C ≥ 212	
H ₂ S	ppb	0 ≤ C < 1	1 ≤ C < 3.6	3.6 ≤ C < 5	5 ≤ C < 8	8 ≤ C < 10.8	C ≥ 10.8	
PM _{2.5}	ug/m ³	0 ≤ C < 2	2 ≤ C < 4	4 ≤ C < 10	10 ≤ C < 20	20 ≤ C < 30	C ≥ 30	

Monthly Update

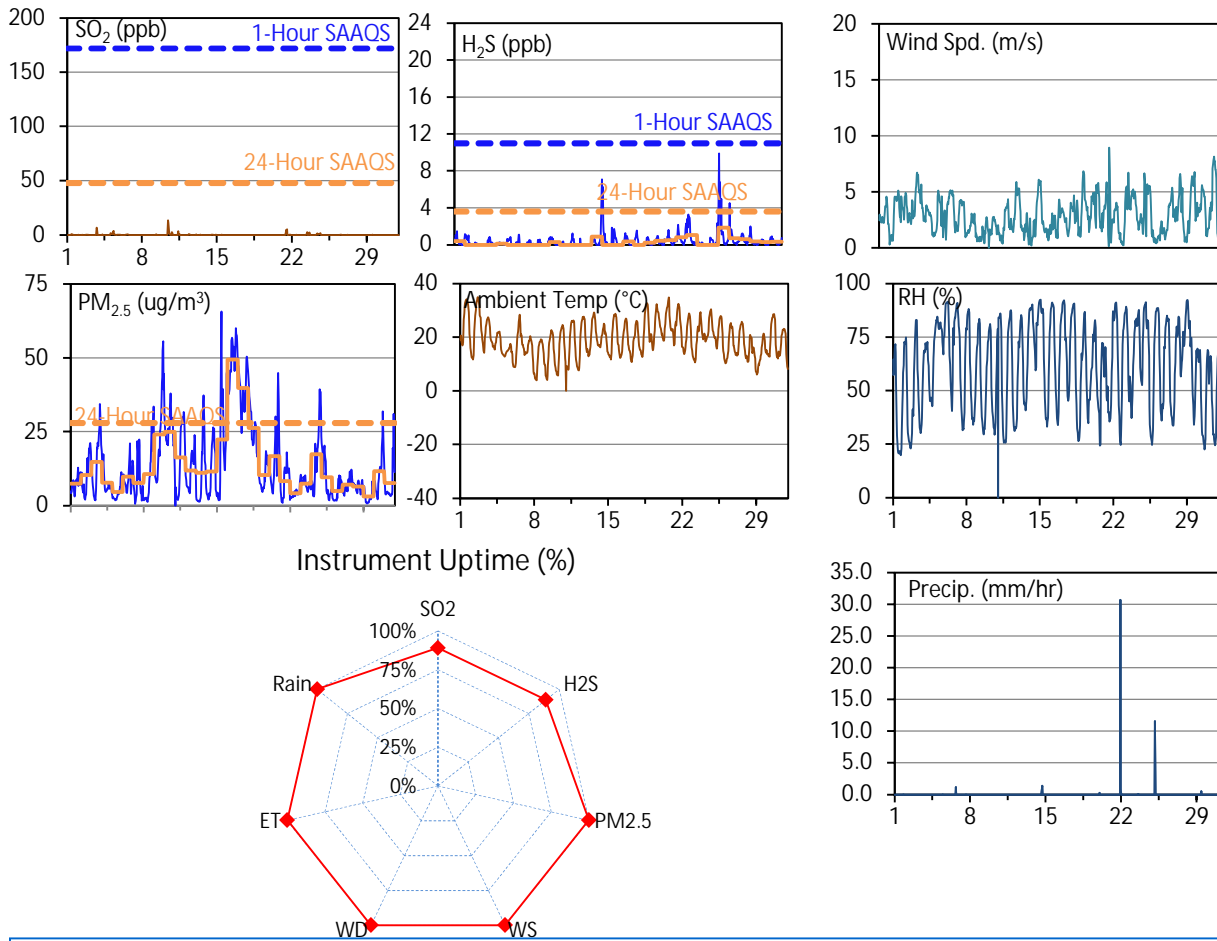
- *All data has been slope, intercept, and baseline corrected. Data may change after validation process.
- *All compliance parameters were within the Saskatchewan Ambient Air Quality Standards with the exception of two 24-hour PM2.5 exceedances associated with wildfire smoke in the area.
- *All compliance parameters were above 90% operational.
- *1 hour of data flagged as "analyzer failure" for the whole station due to flatlined data.
- *WSP is not responsible for the maintenance of this Station and therefore the dashboard was not senior reviewed by operations.

Exceedance Summary (24-Hour Average)											
24-hour Exceedance Information			Summary of Other Parameters During Exceedance								
Pollutant (unit)	24-hr Avg Conc.	Exceedance Date mmm-dd	WS m/s	WD deg	AQI -	Rain mm	ET C	SO ₂ ppb	NO ₂ ppb	H ₂ S ppb	PM _{2.5} ug/m3
PM2.5	49.2	Aug-16	1.0	125.6	34.4	0.0	18.3	0.1	0.6	0.5	49.2
PM2.5	43.8	Aug-17	2.6	116.4	32.0	0.0	17.6	0.2	0.4	0.5	43.8

SESAA Torquay Station - August 2024 Summary Report

Pollutants		Month Records		24-Hour Records				1-Hour Records			
Name	Conc. Unit	Avg. Conc.	Uptime	Maximum		SAAQS Standard	Exceed Days	Maximum		SAAQS Standard	Exceed Hours
				Conc.	Time			Conc.	Time		
SO ₂	ppb	0.2	89.1%	0.6	Aug-5	48	0	13.6	Aug-10 10:00	172	0
H ₂ S	ppb	0.5	89.0%	1.9	Aug-26	3.6	0	9.9	Aug-26 01:00	11	0
PM _{2.5}	ug/m3	13.7	99.9%	49.5	Aug-16	28	2	65.7	Aug-15 10:00	-	-

SAAQS: Saskatchewan Ambient Air Quality Standards



Monthly Update

*All data has been slope, intercept, and baseline corrected. Data may change after validation process.

*All compliance parameters were within the Saskatchewan Ambient Air Quality Standards with the exception of two 24-hour PM_{2.5} exceedances attributed to wildfire smoke in the area.

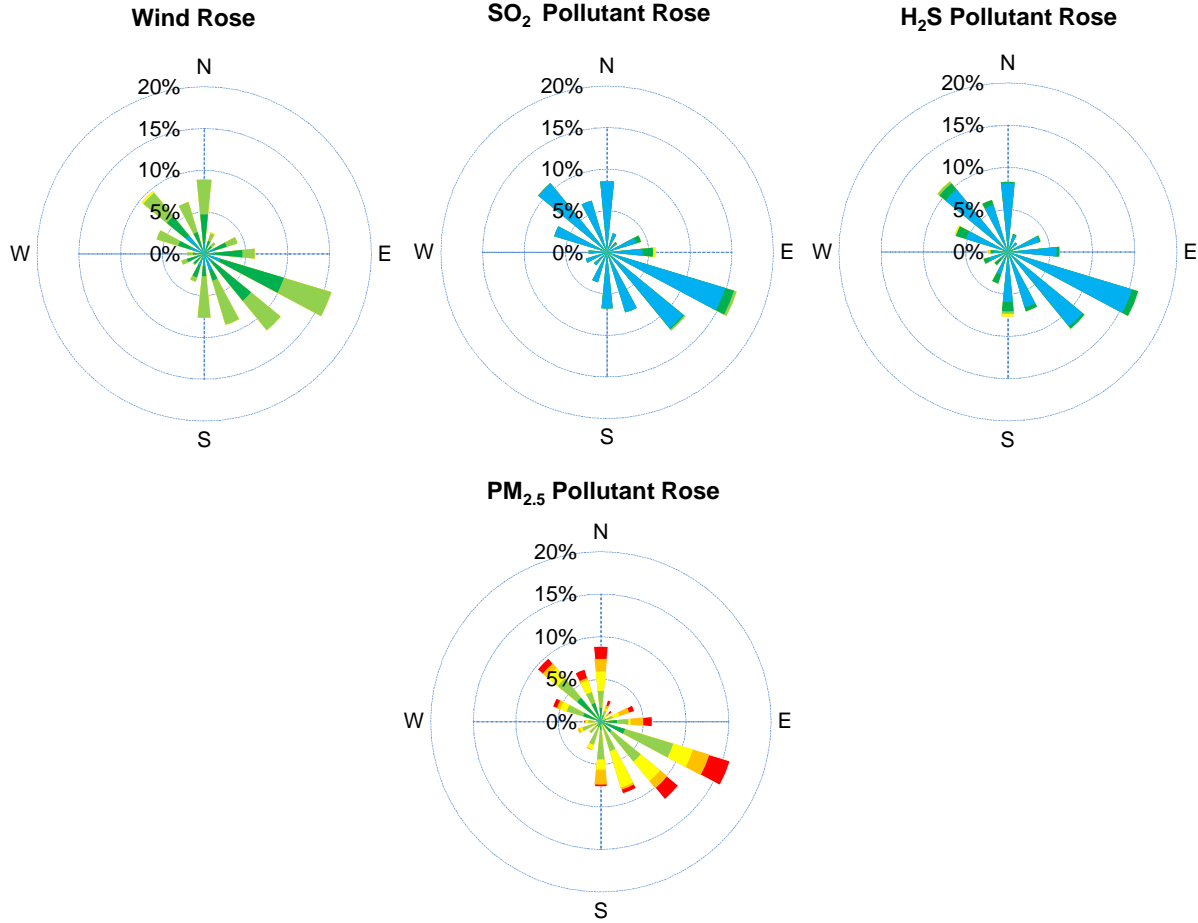
*All compliance parameters had greater than 90% operational uptime, except for SO₂ and H₂S.

*81 hours of data for the H₂S and SO₂ analyzers flagged as "analyzer failure" due to high peaks and flatlining of data.

*1 hour of data for the whole station flagged as "logging failure" due to flatlined missing data.

*WSP is not responsible for the maintenance of this Station and therefore the dashboard was not senior reviewed by operations.

SESAA Torquay Station - August 2024 Summary Report



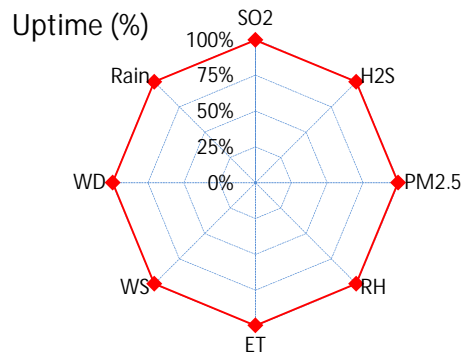
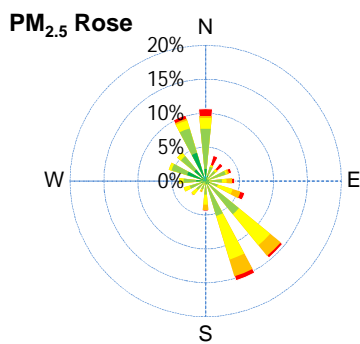
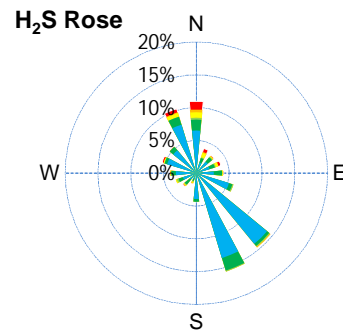
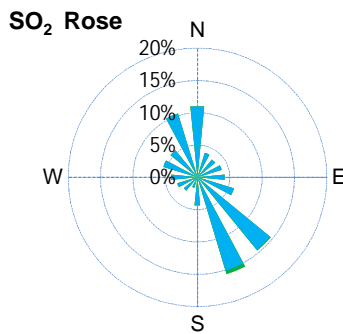
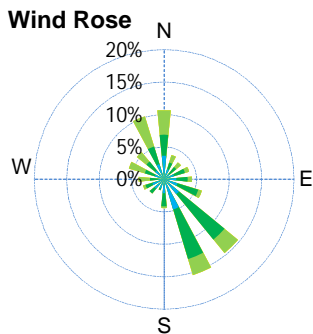
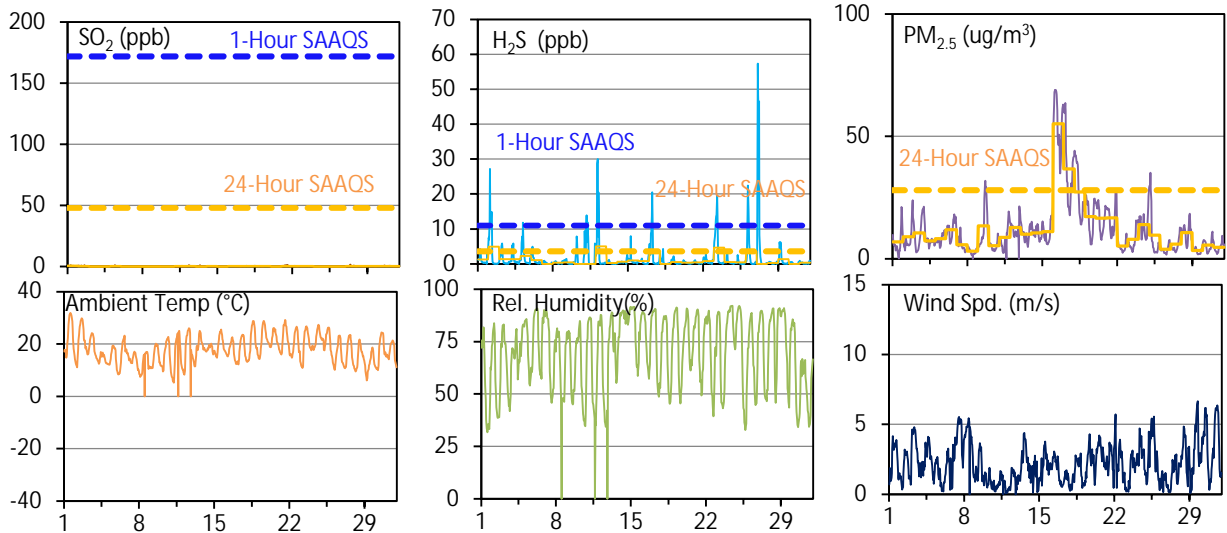
Parameters	Unit	Color Code for Wind Spd & Pollutant Conc. Class						
Wind Speed	m/s	0.3 ≤ WS < 1.4	1.4 ≤ WS < 3.1	3.1 ≤ WS < 7.8	7.8 ≤ WS < 10.8	10.8 ≤ WS < 13.6	WS ≥ 13.6	
SO ₂	ppb	0 ≤ C < 1	1 ≤ C < 5	5 ≤ C < 10	10 ≤ C < 57	57 ≤ C < 172	C ≥ 172	
NO ₂	ppb	0 ≤ C < 5	5 ≤ C < 15	15 ≤ C < 30	30 ≤ C < 100	100 ≤ C < 212	C ≥ 212	
O ₃	ppb	0 ≤ C < 10	10 ≤ C < 20	20 ≤ C < 40	40 ≤ C < 60	60 ≤ C < 82	C ≥ 82	
H ₂ S	ppb	0 ≤ C < 1	1 ≤ C < 3.6	3.6 ≤ C < 5	5 ≤ C < 8	8 ≤ C < 10.8	C ≥ 10.8	
PM _{2.5}	ug/m ³	0 ≤ C < 2	2 ≤ C < 4	4 ≤ C < 10	10 ≤ C < 20	20 ≤ C < 30	C ≥ 30	

Exceedance Summary (24-Hour Average)									
24-hour Exceedance Information			Summary of Other Parameters During Exceedance						
Pollutant	Conc. ppb	Exceedance Date mmm-dd	WS m/s	WD deg	AQHI -	Rain mm	SO ₂ ppb	H ₂ S ppb	PM _{2.5} ug/m ³
PM _{2.5}	49.5	Aug-16	1.7	162.0	-	0.0	-	-	49.5
PM _{2.5}	39.8	Aug-17	2.7	119.0	-	0.0	-	0.4	39.8

SESAA Wauchope Station - August 2024 Summary Report

Pollutants		Month Records		24-Hour Records				1-Hour Records			
Name	Conc. Unit	Avg. Conc.	Uptime	Maximum		SAAQS Objective	Exceed Days	Maximum		SAAQS Objective	Exceed Hours
				Conc.	Time			Conc.	Time		
SO ₂	ppb	0.2	99.6%	0.5	Aug-21	48	0	1.8	Aug-27 10:00	172	0
H ₂ S	ppb	1.7	99.6%	5.0	Aug-12	3.6	3	57.3	Aug-27 02:00	11	26
PM _{2.5}	ug/m3	12.1	99.6%	55.2	Aug-16	28	2	69.0	Aug-16 06:00	-	-

SAAQs: Saskatchewan Ambient Air Quality Standards



SESAA Wauchope Station - August 2024 Summary Report

Parameters	Unit	Color Code for Wind Spd & Pollutant Conc. Class					
Wind Speed	m/s	$0.3 \leq WS < 1.4$	$1.4 \leq WS < 3.1$	$3.1 \leq WS < 7.8$	$7.8 \leq WS < 10.8$	$10.8 \leq WS < 13.6$	$WS \geq 13.6$
SO ₂	ppb	$0 \leq C < 1$	$1 \leq C < 5$	$5 \leq C < 10$	$10 \leq C < 57$	$57 \leq C < 172$	$C \geq 172$
H ₂ S	ppb	$0 \leq C < 1$	$1 \leq C < 3.6$	$3.6 \leq C < 5$	$5 \leq C < 8$	$8 \leq C < 10.8$	$C \geq 10.8$
PM _{2.5}	ug/m ³	$0 \leq C < 2$	$2 \leq C < 4$	$4 \leq C < 10$	$10 \leq C < 20$	$20 \leq C < 30$	$C \geq 30$

Monthly Update

*All data has been slope, intercept, and baseline corrected. Data may change after validation process.

*All compliance parameters were within the Saskatchewan Ambient Air Quality Standards, with the exception of 26 1-hour and three 24-hour H₂S exceedance events, and two 24-hour PM_{2.5} events. PM_{2.5} exceedances can be attributed to wildfire smoke.

*All compliance parameters were greater than 90% operational.

*1 hour of data for the whole stationa flagged as "logging failure" due to an flatlined missing data.

*WSP is not responsible for the maintenance of this Station and therefore the dashboard was not senior reviewed by operations.

Exceedance Summary (1-Hour Average)

1-hour Exceedance Information			Summary of Other Parameters During Exceedance						
Pollutant	Conc. ppb	Exceedance Time mmm-dd hh:mm	WS m/s	WD deg	Rain mm	ET C	SO ₂ ppb	H ₂ S ppb	PM _{2.5} ug/m ³
H2S	12.1	Aug-02 02:00	1.3	359.8	0.0	12.4	0.6	12.1	4.8
H2S	27.2	Aug-02 03:00	1.0	7.5	0.0	12.0	0.5	27.2	4.4
H2S	12.6	Aug-02 04:00	0.6	228.3	0.0	11.4	0.4	12.6	3.3
H2S	11.6	Aug-02 05:00	0.3	324.8	0.0	11.1	0.3	11.6	6.3
H2S	14.8	Aug-02 06:00	0.5	346.3	0.0	13.7	0.4	14.8	8.1
H2S	14.8	Aug-02 07:00	0.5	36.3	0.0	17.7	0.7	14.8	7.4
H2S	11.8	Aug-05 05:00	1.4	57.1	0.0	12.0	0.2	11.8	6.7
H2S	13.9	Aug-11 03:00	0.7	9.7	0.0	5.9	0.0	13.9	7.1
H2S	11.9	Aug-11 05:00	0.8	14.3	0.0	5.2	0.0	11.9	5.1
H2S	28.8	Aug-12 03:00	0.3	346.3	0.0	9.2	0.2	28.8	13.1
H2S	30.0	Aug-12 04:00	0.4	356.3	0.0	8.5	0.2	30.0	13.0
H2S	20.5	Aug-12 06:00	0.3	14.8	0.0	9.7	0.1	20.5	12.6
H2S	13.7	Aug-17 05:00	0.7	13.4	0.0	12.6	0.1	13.7	43.7
H2S	20.5	Aug-17 06:00	0.7	3.5	0.0	12.1	0.1	20.5	38.2
H2S	12.8	Aug-23 04:00	0.3	296.7	0.0	11.3	0.1	12.8	5.3
H2S	13.7	Aug-23 05:00	0.3	292.2	0.0	10.8	0.1	13.7	4.6
H2S	13.9	Aug-23 06:00	0.3	358.1	0.0	11.6	0.2	13.9	4.7
H2S	19.5	Aug-23 07:00	0.2	63.5	0.0	16.0	0.2	19.5	4.5
H2S	14.7	Aug-23 08:00	0.9	70.6	0.0	19.9	0.3	14.7	3.8
H2S	14.2	Aug-26 03:00	1.0	349.7	0.0	11.6	0.0	14.2	3.2
H2S	22.4	Aug-26 04:00	0.9	5.2	0.0	10.7	0.1	22.4	3.9
H2S	15.7	Aug-26 05:00	0.3	272.5	0.0	10.0	0.1	15.7	3.8
H2S	57.3	Aug-27 02:00	0.2	16.7	0.0	11.3	0.0	57.3	4.5
H2S	48.4	Aug-27 03:00	0.3	356.7	0.0	10.9	0.1	48.4	4.1
H2S	40.2	Aug-27 04:00	0.2	344.6	0.0	10.7	0.1	40.2	3.5
H2S	46.5	Aug-27 05:00	0.1	95.8	0.0	10.9	0.1	46.5	3.6

SESAA Wauchope Station - August 2024 Summary Report

Exceedance Summary (24-Hour Average)										
24-hour Exceedance Information			Summary of Other Parameters During Exceedance							
Pollutant	Conc. ppb	Exceedance Date mmm-dd	WS m/s	WD deg	Rain mm	ET C	SO ₂ ppb	H ₂ S ppb	PM _{2.5} ug/m3	
PM2.5	55.2	Aug-16	2.1	96.6	0.0	17.8	0.2	0.8	55.2	
PM2.5	36.7	Aug-17	0.9	104.9	0.0	17.7	0.2	3.3	36.7	
H2S	4.9	Aug-2	1.8	178.0	0.0	21.5	0.4	4.9	8.9	
H2S	5.0	Aug-12	0.9	195.8	0.0	17.8	0.2	5.0	12.8	
H2S	4.7	Aug-23	1.4	163.4	0.0	19.6	0.2	4.7	7.9	

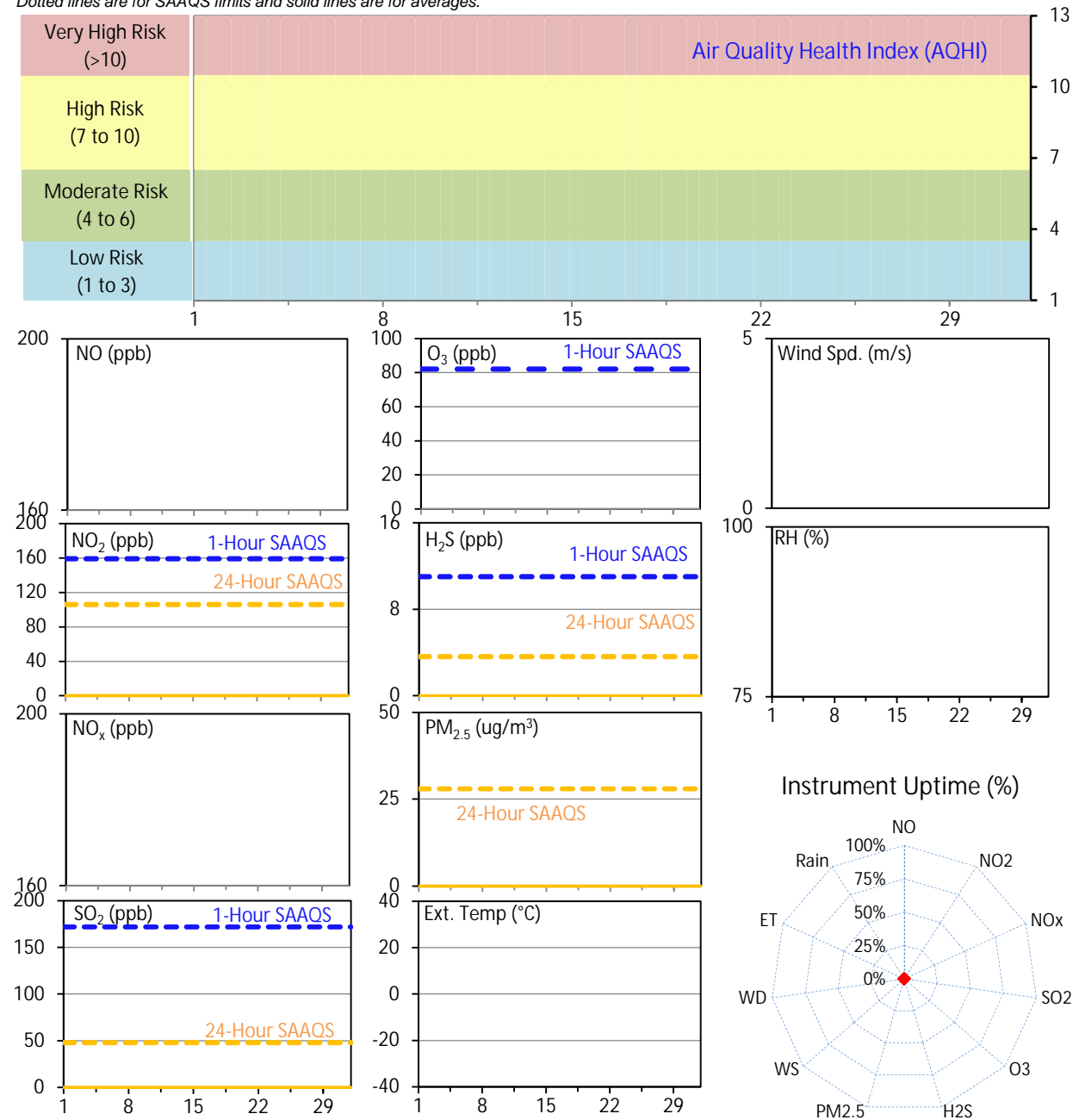
SESAA Weyburn Station - August 2024 Summary Report

Pollutants		Month Records		24-Hour Records				1-Hour Records			
				Maximum		SAAQS Standard	Exceed Days	Maximum		SAAQS Standard	Exceed Hours
				Conc.	Time			Conc.	Time		
Name	Conc. Unit	Avg. Conc.	Uptime	Conc.	Time	Standard	Days	Conc.	Time	Standard	Hours
NO	ppb	-	0.0%	< 0.1	-	-	-	< 0.1	-	-	-
NO ₂	ppb	-	0.0%	< 0.1	-	106	0	< 0.1	-	159	0
NO _x	ppb	-	0.0%	< 0.1	-	-	-	< 0.1	-	-	-
SO ₂	ppb	-	0.0%	< 0.1	-	48	0	< 0.1	-	172	0
O ₃	ppb	-	0.0%	< 0.1	-	-	-	< 0.1	-	82	0
H ₂ S	ppb	-	0.0%	< 0.1	-	3.6	0	< 0.1	-	11	0
PM _{2.5}	ug/m3	-	0.0%	< 0.1	-	28	0	< 0.1	-	-	-

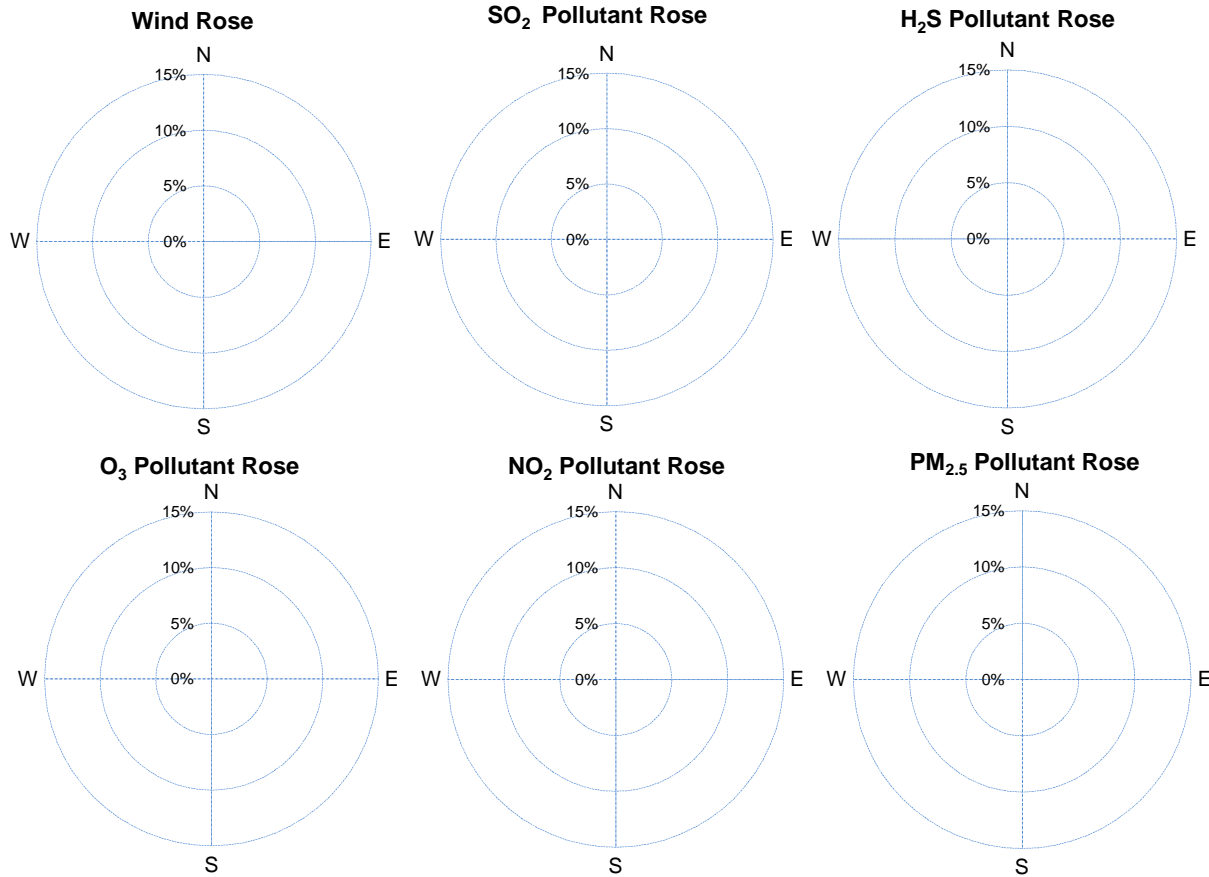
SAAQS: Saskatchewan Ambient Air Quality Standards

* Air Quality Standard refers to Saskatchewan Ambient Air Quality Standards (SAAQS).

* Dotted lines are for SAAQS limits and solid lines are for averages.



SESAA Weyburn Station - August 2024 Summary Report



Parameters	Unit	Color Code for Wind Spd & Pollutant Conc. Class						
Wind Speed	m/s	$0.3 \leq WS < 1.4$	$1.4 \leq WS < 3.1$	$3.1 \leq WS < 7.8$	$7.8 \leq WS < 10.8$	$10.8 \leq WS < 13.6$	$WS \geq 13.6$	
SO ₂	ppb	$0 \leq C < 1$	$1 \leq C < 5$	$5 \leq C < 10$	$10 \leq C < 57$	$57 \leq C < 172$	$C \geq 172$	
NO ₂	ppb	$0 \leq C < 5$	$5 \leq C < 15$	$15 \leq C < 30$	$30 \leq C < 100$	$100 \leq C < 212$	$C \geq 212$	
O ₃	ppb	$0 \leq C < 10$	$10 \leq C < 20$	$20 \leq C < 40$	$40 \leq C < 60$	$60 \leq C < 82$	$C \geq 82$	
H ₂ S	ppb	$0 \leq C < 1$	$1 \leq C < 3.6$	$3.6 \leq C < 5$	$5 \leq C < 8$	$8 \leq C < 10.8$	$C \geq 10.8$	
PM _{2.5}	ug/m ³	$0 \leq C < 2$	$2 \leq C < 4$	$4 \leq C < 10$	$10 \leq C < 20$	$20 \leq C < 30$	$C \geq 30$	

Monthly Update

*No data was provided to WSP to complete the August Dashboard.

*WSP is not responsible for the maintenance of this Station and therefore the dashboard was not senior reviewed by operations.