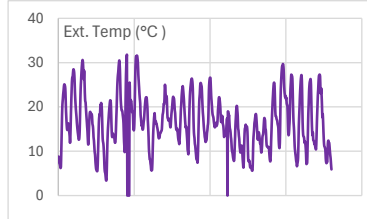
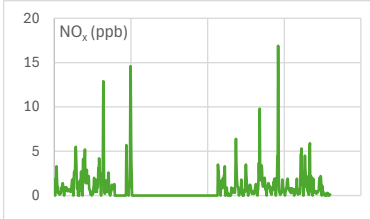
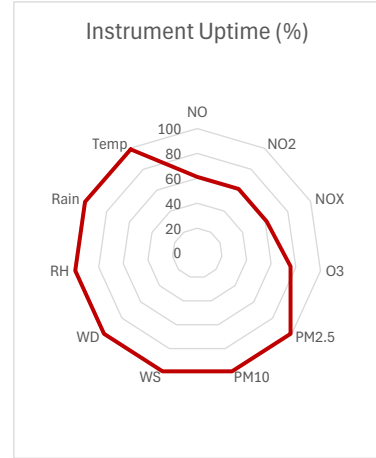
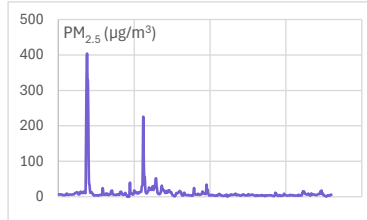
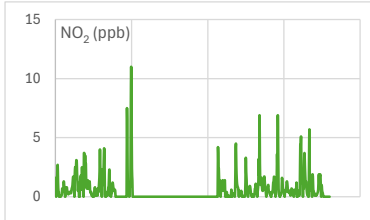
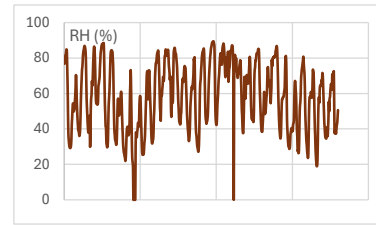
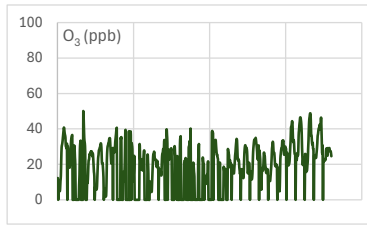
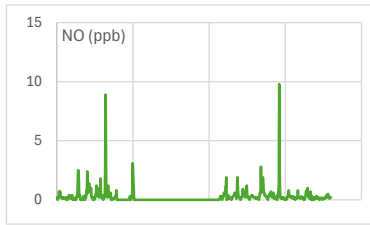
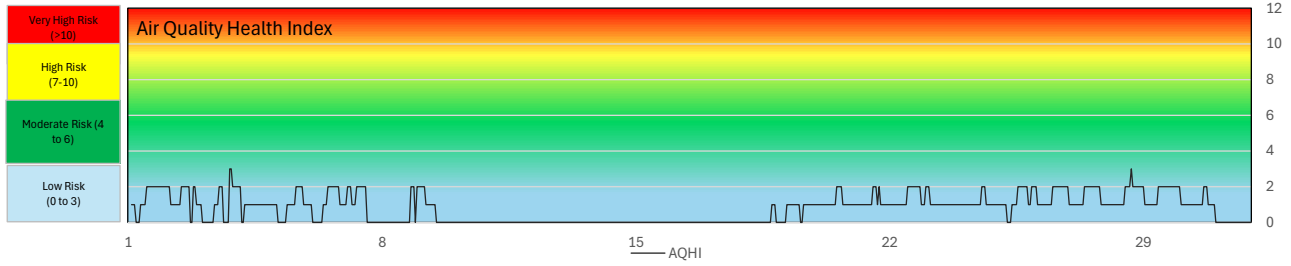


# SESAA Esterhazy Station - September 2024 Summary Report

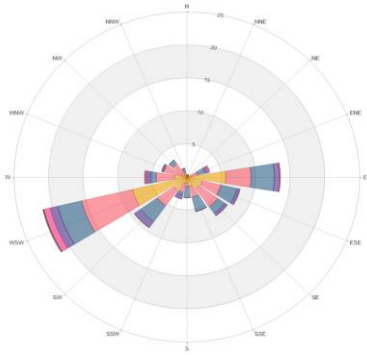
Pollutants		Month Records		24 Hour Records				1 Hour Records			
Name	Unit	Average Concentration	Uptime	Maximum		SAAQS Objective	Exceed Days	Maximum		SAAQS Objective	Exceed Hours
				Conc.	Date			Conc.	Date and Time		
NO	ppb	0.4	61.3%	1.1	6-Sep	-	-	9.8	9/25/2024 08:00	-	-
NO <sub>2</sub>	ppb	1	61.3%	1.7	3-Sep	106	0	11	9/9/2024 07:00	159	0
NO <sub>x</sub>	ppb	1.4	61.3%	2.2	23-Sep	-	-	16.9	9/25/2024 08:00	-	-
O <sub>3</sub>	ppb	24.7	75.7%	33.3	29-Sep	-	-	50.1	9/3/2024 20:00	82	0
PM <sub>2.5</sub>	µg/m <sup>3</sup>	11.8	99.0%	100.4	4-Sep	28	2	403.8	9/4/2024 04:00	-	-

SAAQS: Saskatchewan Ambient Air Quality Standards

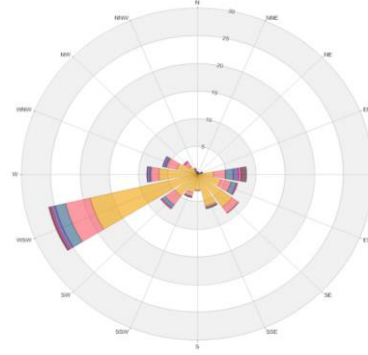


Exceedance Summary										
24-hour Exceedance Information			Summary of other Parameters during Exceedance							
Pollutant	Date	Conc.	WS	WD	Precip.	NO	NO <sub>2</sub>	NO <sub>x</sub>	O <sub>3</sub>	PM <sub>2.5</sub>
PM <sub>2.5</sub>	4-Sep	100.4	1.6	292.1	0.0	0.6	1.4	2.0	22.1	100.4
PM <sub>2.5</sub>	10-Sep	41.5	1.7	269.9	0.0	<Samp	<Samp	<Samp	<Samp	41.5

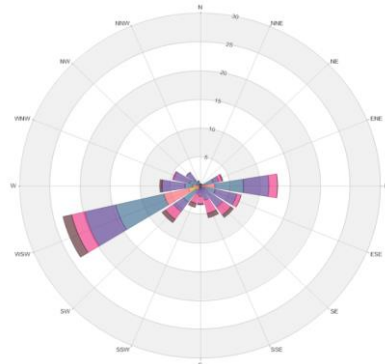
# SESAA Esterhazy Station - September 2024 Summary Report



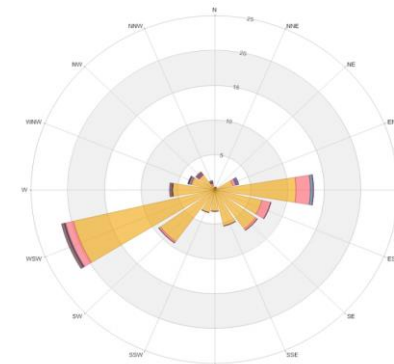
Wind Rose



Pollution Rose NO<sub>2</sub>



Pollution Rose O<sub>3</sub>



Pollution Rose PM<sub>2.5</sub>

Parameters	Unit	Color Code for Wind Speed and Pollutant Conc. Class					
Wind Speed	m/s	0.5 -W- 1.2	1.2 -W- 2.4	2.4 -W- 3.6	3.6 -W- 4.8	4.8 -W- 6.0	W > 6.0
NO <sub>2</sub>	ppb	0.0 -C- 0.8	0.8 -C- 1.6	1.6 -C- 2.4	2.4 -C- 3.2	3.2 -C- 4.0	C > 4.0
O <sub>3</sub>	ppb	0.0 -C- 8.0	8.0 -C- 16.0	16.0 -C- 24.0	24.0 -C- 32.0	32.0 -C- 40.0	C > 40.0
PM <sub>2.5</sub>	µg/m <sup>3</sup>	0.0 -C- 16.0	16.0 -C- 32.0	32.0 -C- 48.0	48.0 -C- 64.0	64.0 -C- 80.0	C > 80.0

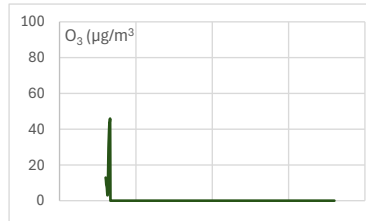
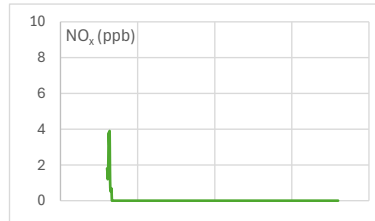
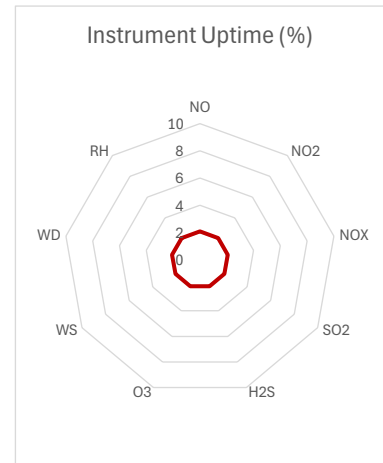
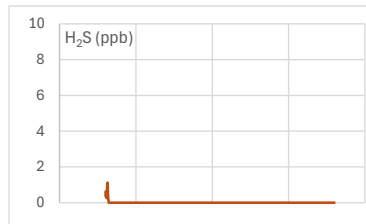
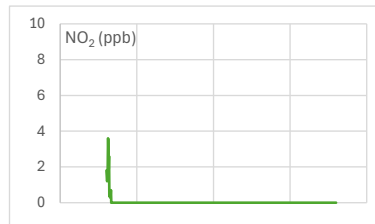
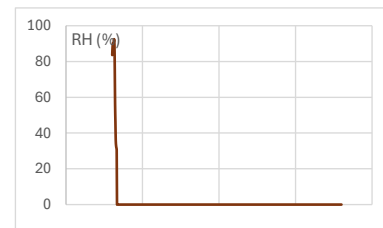
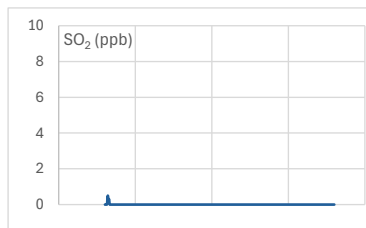
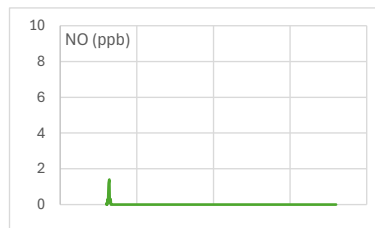
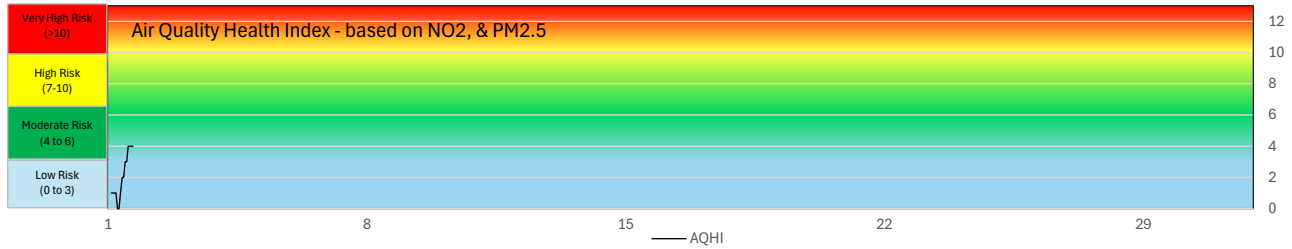
- \* All data has been zero baseline corrected, if any. Data may change after final validation process.
- \* All compliance parameters were within the Saskatchewan Ambient Air Quality Standards with the exception of two 24-hour PM<sub>2.5</sub> exceedances.
- \* All compliance parameters were less than 90% operational for the month, except for PM<sub>2.5</sub>.
- \* 175 hours of data flagged as "analyzer failure" for O<sub>3</sub> analyzer due to missing and flatlined data.
- \* 279 hours of data flagged as "analyzer failure" for NOx analyzer due to missing and flatlined data.
- \* NO/NO<sub>2</sub>/NOx, O<sub>3</sub> and PM<sub>2.5</sub> analyzer calibrations performed during the week of October 21, 2024.



# SESAA Glen Ewen Station - September 2024 Summary Report

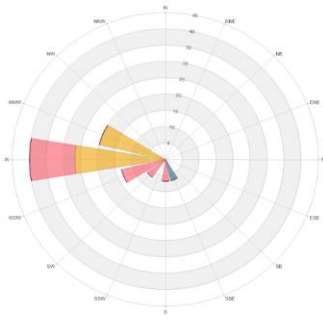
Pollutants		Month Records		24 Hour Records				1 Hour Records			
Name	Unit	Average Concentration	Uptime	Maximum		SAAQS Objective	Exceed Days	Maximum		SAAQS Objective	Exceed Hours
				Conc.	Date			Conc.	Date and Time		
NO	ppb	0.4	2.1%	0.00	-	-	-	1.4	9/1/2024 10:00	-	-
NO <sub>2</sub>	ppb	1.4	2.1%	0.00	-	106	0	3.6	9/1/2024 06:00	159	0
NO <sub>x</sub>	ppb	1.8	2.1%	0.00	-	-	-	3.9	9/1/2024 09:00	-	-
SO <sub>2</sub>	ppb	0.1	2.1%	0.00	-	48	0	0.5	9/1/2024 10:00	172	0
H <sub>2</sub> S	ppb	0.3	2.1%	0.00	-	3.6	0	1.1	9/1/2024 07:00	11	0
O <sub>3</sub>	µg/m <sup>3</sup>	21.3	2.1%	0.00	-	28	0	45.9	9/1/2024 15:00	-	-

SAAQS: Saskatchewan Ambient Air Quality Standards

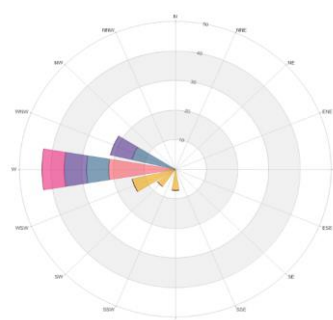


# SESAA Glen Ewen Station - September 2024 Summary Report

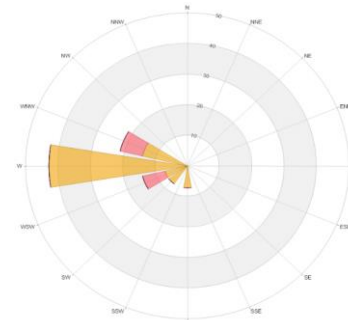
Exceedance Summary										
24-hour Exceedance Information			Summary of other Parameters during Exceedance							
Pollutant	Date	Conc.	WS	WD	H <sub>2</sub> S	NO	NO <sub>2</sub>	NO <sub>x</sub>	SO <sub>2</sub>	PM <sub>2.5</sub>



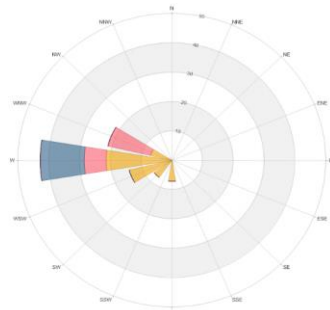
Wind Rose



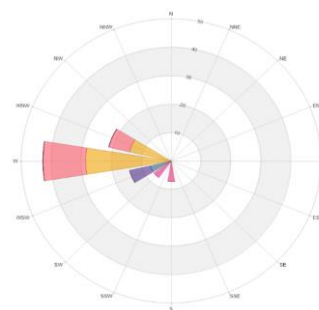
NO<sub>2</sub> Pollution Rose



SO<sub>2</sub> Pollution Rose



H<sub>2</sub>S Pollution Rose



O<sub>3</sub> Pollution Rose

Parameters	Unit	Color Code for Wind Speed and Pollutant Conc. Class						
Wind Speed	m/s	0.5 -W- 1.2	1.2 -W- 2.4	2.4 -W- 3.6	3.6 -W- 4.8	4.8 -W- 6.0	W > 6.0	
NO <sub>2</sub>	ppb	0.0 -C- 0.8	0.8 -C- 1.6	1.6 -C- 2.4	2.4 -C- 3.2	3.2 -C- 4.0	C > 4.0	
SO <sub>2</sub>	ppb	0.0 -C- 0.4	0.4 -C- 0.8	0.8 -C- 1.2	1.2 -C- 1.6	1.6 -C- 2.0	C > 2.0	
H <sub>2</sub> S	ppb	0.0 -C- 0.4	0.4 -C- 0.8	0.8 -C- 1.2	1.2 -C- 1.6	1.6 -C- 2.0	C > 2.0	
O <sub>3</sub>	ppb	0.0 -C- 10.0	10.0 -C- 20.0	20.0 -C- 30.0	30.0 -C- 40.0	40.0 -C- 50.0	C > 50.0	

## Monthly Update

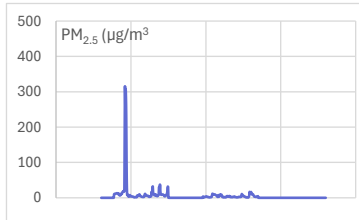
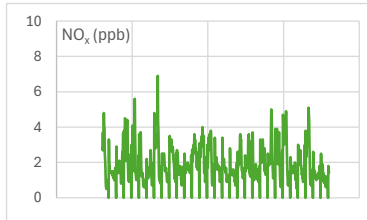
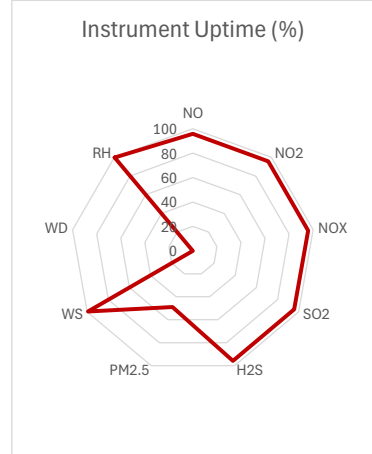
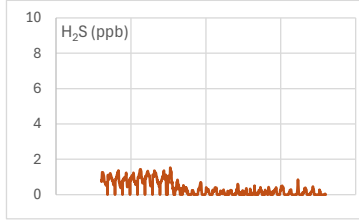
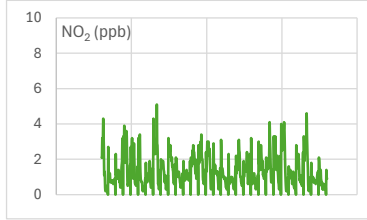
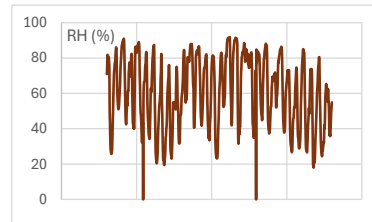
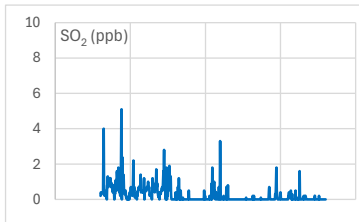
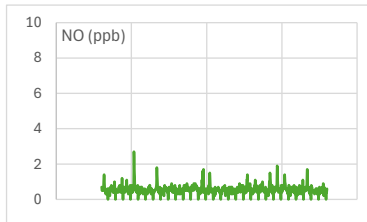
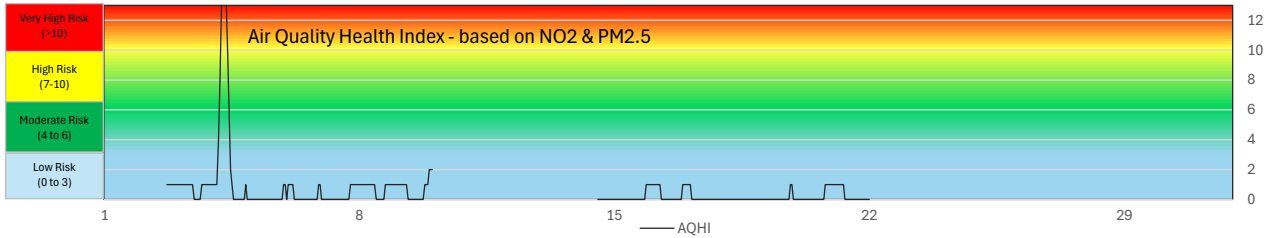
- \* All data has been baseline corrected. Data may change after final validation process.
- \* All compliance parameters were within the Saskatchewan Ambient Air Quality Standards.
- \* All compliance parameters were less than 90% operational for the month, due to extended power failure.
- \* NO/NO<sub>2</sub>/NO<sub>x</sub>, O<sub>3</sub>, SO<sub>2</sub>, H<sub>2</sub>S and PM<sub>2.5</sub> analyzers calibrated the weeks of October 21 and 28, 2024.



# SESAA Oxbow Station - September 2024 Summary Report

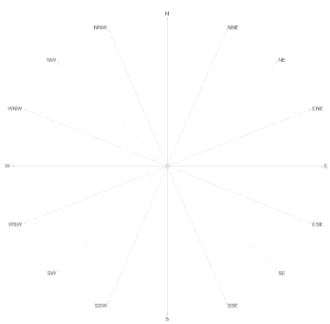
Pollutants		Month Records		24 Hour Records				1 Hour Records			
Name	Unit	Average Concentration	Uptime	Maximum		SAAQS Objective	Exceed Days	Maximum		SAAQS Objective	Exceed Hours
				Conc.	Date			Conc.	Date and Time		
NO	ppb	0.6	95.8%	0.7	5-Sep	-	-	2.7	9/5/2024 08:00	-	-
NO <sub>2</sub>	ppb	1.4	95.8%	1.9	4-Sep	106	0	5.1	9/8/2024 09:00	159	0
NO <sub>x</sub>	ppb	2	95.8%	2.6	8-Sep	-	-	6.9	9/8/2024 09:00	-	-
SO <sub>2</sub>	ppb	0.3	95.8%	1.3	3-Sep	48	0	5.1	9/3/2024 20:00	172	0
H <sub>2</sub> S	ppb	0.4	95.8%	1.0	6-Sep	3.6	0	1.5	9/10/2024 06:00	11	0
PM <sub>2.5</sub>	µg/m <sup>3</sup>	11.1	48.9%	76.6	4-Sep	28	1	315.5	9/4/2024 05:00	-	-

SAAQS: Saskatchewan Ambient Air Quality Standards

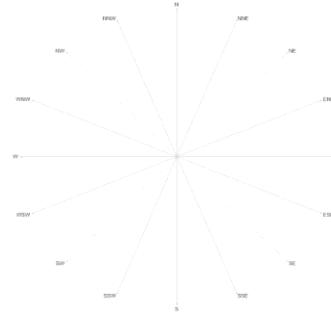


# SESAA Oxbow Station - September 2024 Summary Report

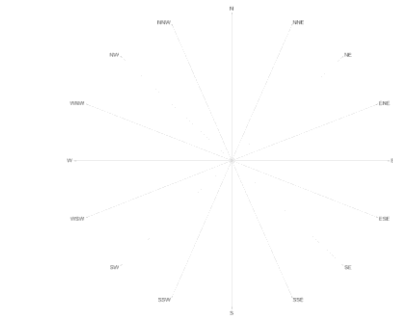
Exceedance Summary										
24-hour Exceedance Information			Summary of other Parameters during Exceedance							
Pollutant	Date	Conc.	WS	WD	H <sub>2</sub> S	NO	NO <sub>2</sub>	NOx	SO <sub>2</sub>	PM <sub>2.5</sub>
PM <sub>2.5</sub>	4-Sep	76.6	0.0	<Samp	0.8	0.6	1.9	2.5	0.3	76.6



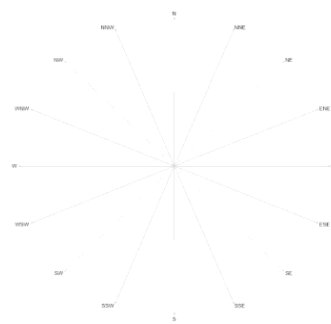
Wind Rose



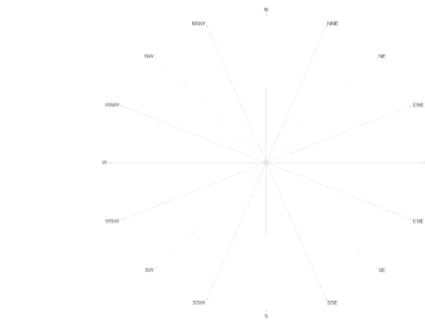
NO<sub>2</sub> Pollution Rose



SO<sub>2</sub> Pollution Rose



H<sub>2</sub>S Pollution Rose



PM<sub>2.5</sub> Pollution Rose

Parameters	Unit	Color Code for Wind Speed and Pollutant Conc. Class					
Wind Speed	m/s						
NO <sub>2</sub>	ppb						
SO <sub>2</sub>	ppb						
H <sub>2</sub> S	ppb						
PM <sub>2.5</sub>	µg/m3						

## Monthly Update

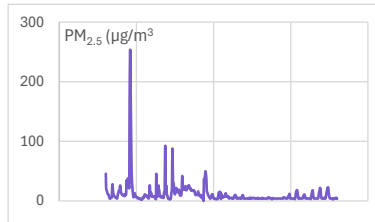
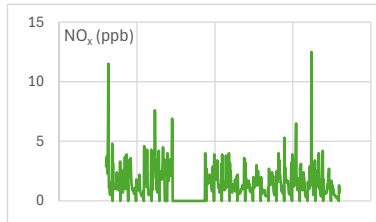
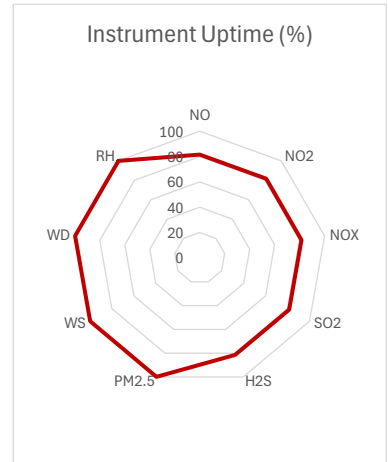
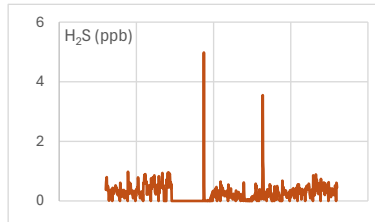
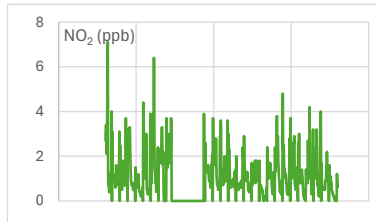
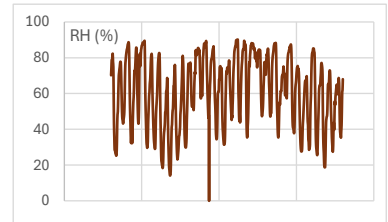
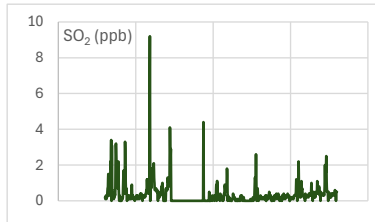
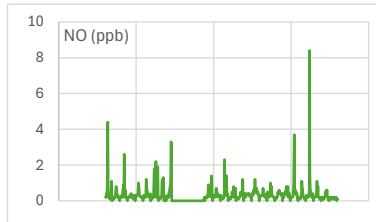
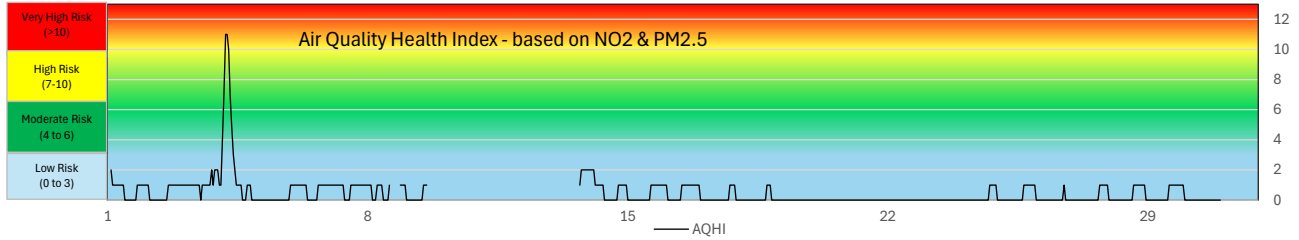
- \* All data has been zero baseline corrected. Data may change after final validation process.
- \* All compliance parameters were within the Saskatchewan Ambient Air Quality Standards with the exception of one 24-hour PM<sub>2.5</sub> exceedance.
- \* All compliance parameters were more than 90% operational for the month, except for the PM<sub>2.5</sub> and WS/WD.
- \* 720 hours of data flagged as "analyzer failure" for WS/WD due to missing data. Sensor not reporting data as of August 6, 2024.
- \* 368 hours of data flagged as "analyzer failure" for PM<sub>2.5</sub> due to missing and flatlined data.
- \* 30 hours of data flagged as "analyzer failure" for NOx due to missing and flatlined data.
- \* NO/NO<sub>2</sub>/NOx, O<sub>3</sub>, SO<sub>2</sub>, H<sub>2</sub>S and PM<sub>2.5</sub> analyzers were calibrated the weeks of October 21 and 28, 2024.



# SESAA Stoughton Station - September 2024 Summary Report

Pollutants		Month Records		24 Hour Records				1 Hour Records			
Name	Unit	Average Concentration	Uptime	Maximum		SAAQS Objective	Exceed Days	Maximum		SAAQS Objective	Exceed Hours
				Conc.	Date			Conc.	Date and Time		
NO	ppb	0.4	81.5%	0.7	27-Sep	-	-	8.4	9/27/2024 09:00	-	-
NO <sub>2</sub>	ppb	1.3	81.5%	2.3	7-Sep	106	0	7.1	9/1/2024 08:00	159	0
NO <sub>x</sub>	ppb	1.7	81.5%	2.9	7-Sep	-	-	12.5	9/27/2024 09:00	-	-
SO <sub>2</sub>	ppb	0.5	81.5%	1.1	6-Sep	48	0	9.2	9/6/2024 20:00	172	0
H <sub>2</sub> S	ppb	0.3	81.5%	0.5	7-Sep	3.6	0	5.0	9/13/2024 18:00	11	0
PM <sub>2.5</sub>	µg/m <sup>3</sup>	11.2	99.9%	57.5	4-Sep	28	1	253.7	9/4/24 5:00	-	-

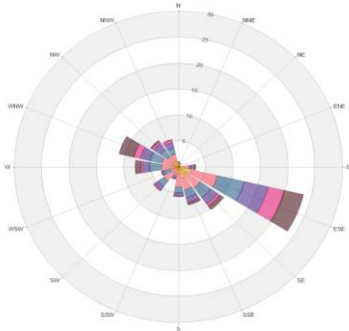
SAAQS: Saskatchewan Ambient Air Quality Standards



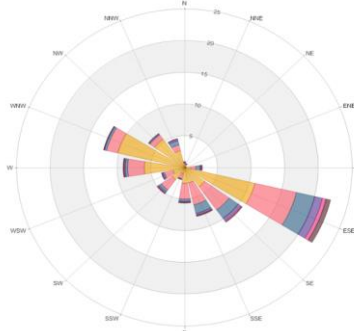
# SESAA Stoughton Station - September 2024 Summary Report

## Exceedance Summary

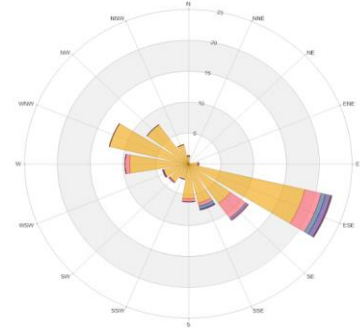
24-hour Exceedance Information			Summary of other Parameters during Exceedance							
Pollutant	Date	Conc.	WS	WD	H <sub>2</sub> S	NO	NO <sub>2</sub>	NO <sub>x</sub>	SO <sub>2</sub>	PM <sub>2.5</sub>
PM <sub>2.5</sub>	4-Sep	57.5	3.0	319.4	0.3	0.2	1.3	1.5	0.2	57.5



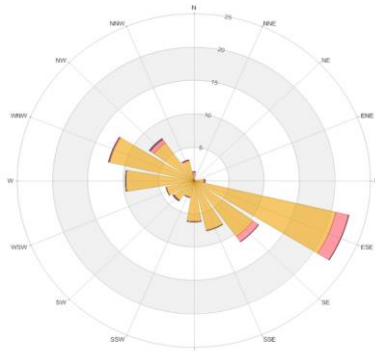
Wind Rose



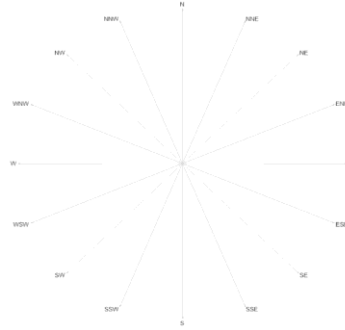
NO<sub>2</sub> Pollution Rose



SO<sub>2</sub> Pollution Rose



H<sub>2</sub>S Pollution rose



PM<sub>2.5</sub> Pollution Rose

Parameters	Unit	Color Code for Wind Speed and Pollutant Conc. Class						
Wind Speed	m/s	0.5 -W- 1.2	1.2 -W- 2.4	2.4 -W- 3.6	3.6 -W- 4.8	4.8 -W- 6.0	W > 6.0	
NO <sub>2</sub>	ppb	0.0-C-1.0	1.0-C-2.0	2.0-C-3.0	3.0-C-C4.0	4.0-C-5.0	C > 5.0	
SO <sub>2</sub>	ppb	0.0-C-1.0	1.0-C-2.0	2.0-C-3.0	3.0-C-C4.0	4.0-C-5.0	C > 5.0	
H <sub>2</sub> S	ppb	0.0-C-0.7	0.7-C-1.4	1.4-C-2.1	2.1-C-2.8	2.8-C-3.5	C > 3.5	
PM <sub>2.5</sub>	µg/m <sup>3</sup>							

## Monthly Update

- \* All data has been zero baseline corrected, if any. Data may change after final validation process.
- \* All compliance parameters were within the Saskatchewan Ambient Air Quality Standards with the exception of one 24-hour PM<sub>2.5</sub> exceedance.
- \* All compliance parameters were less than 90% operational for the month except for PM<sub>2.5</sub>.
- \* PM<sub>2.5</sub> data were manually downloaded from the Airpointer website, so the software did not generate the pollution rose.
- \* 103 hours of data were flagged as "gas analyzer failure" for the whole station due to flatlined data..
- \* 30 hours of data were flagged for all gas analyzers due to daily IZS checks, resulting in the loss of one hour of data each day.
- \* NO<sub>x</sub>, SO<sub>2</sub>, H<sub>2</sub>S and PM<sub>2.5</sub> were calibrated on the week of October 7, 2024.

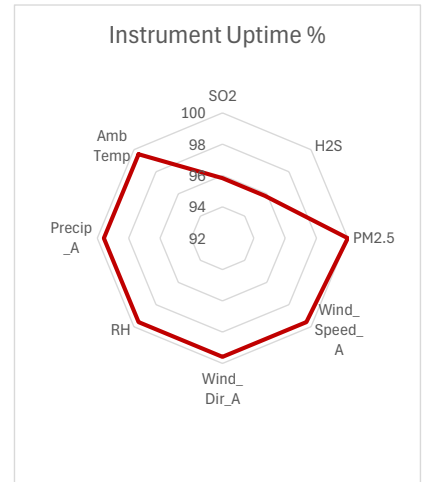
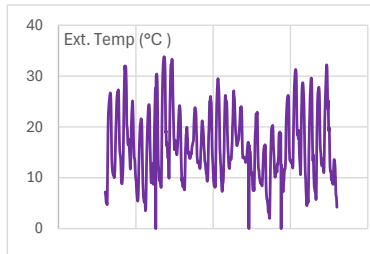
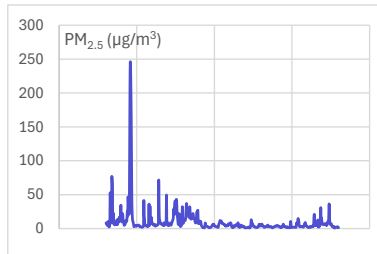
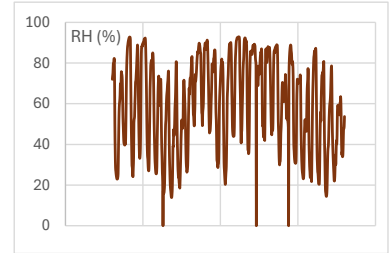
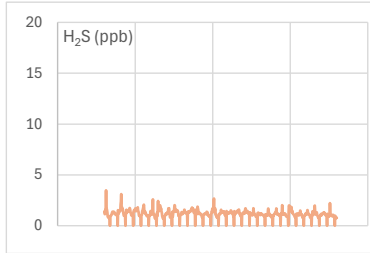
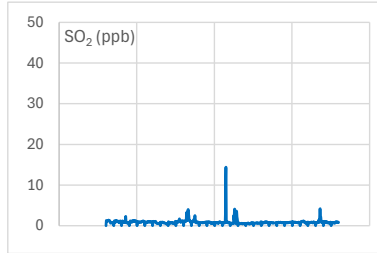




## SESAA Torquay Station - September 2024 Summary Report

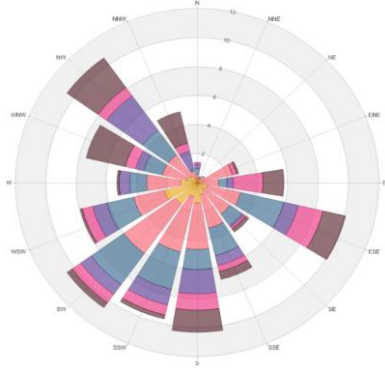
Pollutants		Month Records		24 Hour Records				1 Hour Records			
Name	Unit	Average Concentration	Uptime	Maximum		SAAQS Objective	Exceed Days	Maximum		SAAQS Objective	Exceed Hours
				Conc.	Date			Conc.	Date and Time		
SO <sub>2</sub>	ppb	0.9	95.8%	1.9	16-Sep	48	0	14.4	9/16/2024 12:00	172	0
H <sub>2</sub> S	ppb	1.2	95.8%	1.5	3-Sep	3.6	0	3.5	9/1/2024 06:00	11	0
PM <sub>2.5</sub>	µg/m <sup>3</sup>	9.6	100.0%	59.2	4-Sep	28	1	246.1	9/4/2024 04:00	-	-

SAAQS: Saskatchewan Ambient Air Quality Standards

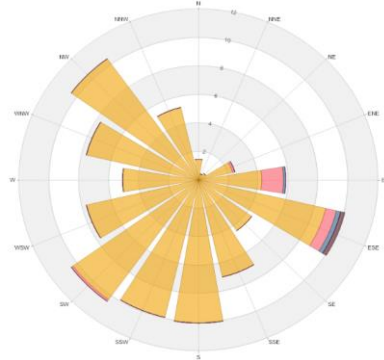


Exceedance Summary								
24-hour Exceedance Information			Summary of other Parameters during Exceedance					
Pollutant	Date	Conc.	WS	WD	Precip.	SO <sub>2</sub>	H <sub>2</sub> S	PM <sub>2.5</sub>
PM <sub>2.5</sub>	4-Sep	59.2	4.6	328.4	0.1	1.1	1.4	59.2

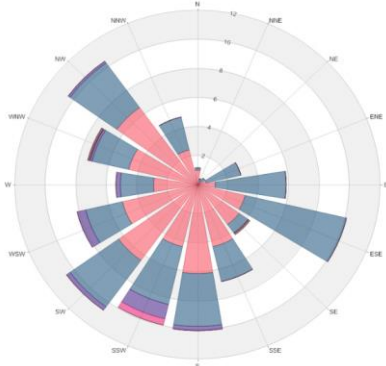
# SESAA Torquay Station - September 2024 Summary Report



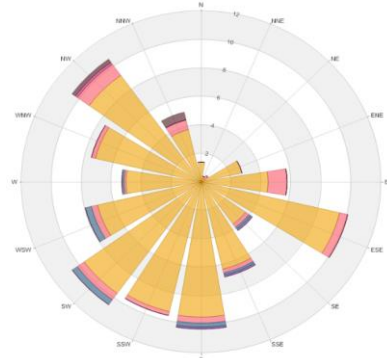
Wind Rose



Pollution Rose SO<sub>2</sub>



Pollution Rose H<sub>2</sub>S



Pollution Rose PM<sub>2.5</sub>

Parameters	Unit	Color Code for Wind Speed and Pollutant Conc. Class						
Wind Speed	m/s	0.5 -W- 1.2	1.2 -W- 2.4	2.4 -W- 3.6	3.6 -W- 4.8	4.8 -W- 6.0	W > 6.0	
SO <sub>2</sub>	ppb	0.0 -C- 2.0	2.0 -C- 4.0	4.0 -C- 6.0	6.0 -C- 8.0	8.0 -C- 10.0	C > 10	
H <sub>2</sub> S	ppb	0.0 -C- 0.6	0.6 -C- 1.2	1.2 -C- 1.8	1.8 -C- 2.4	2.4 -C- 3.0	C > 3.0	
PM <sub>2.5</sub>	µg/m <sup>3</sup>	0.0 -C- 20.0	20.0 -C- 40.0	40.0 -C- 60.0	60.0 -C- 80.0	80.0 -C- 100.0	C > 100	

## Monthly Update

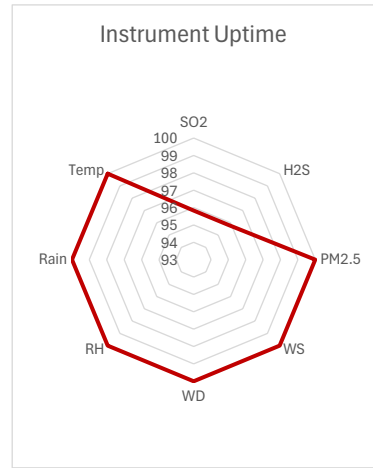
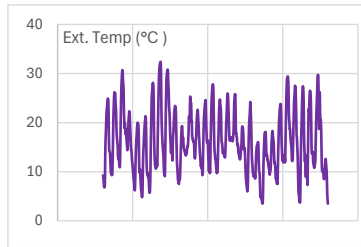
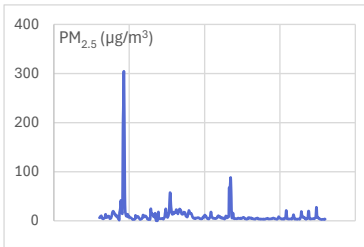
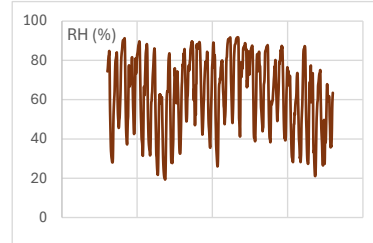
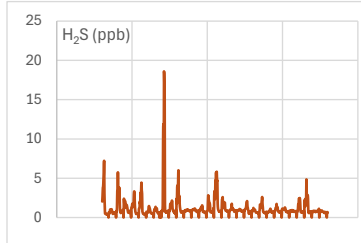
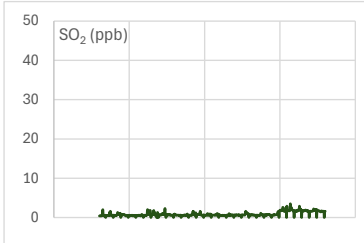
- \* All data has been zero baseline corrected, if any. Data may change after final validation process.
- \* All compliance parameters were within the Saskatchewan Ambient Air Quality Standards with the exception of one 24-hour PM<sub>2.5</sub>
- \* All compliance parameters were more than 90% operational for the month.
- \* 30 hours of data were flagged due to daily IZS checks, resulting in the loss of one hour of data each day.
- \* SO<sub>2</sub>, H<sub>2</sub>S and PM<sub>2.5</sub> analyzers were calibrated the weeks of October 7 and 28, 2024.



## SESAA Wauchope Station - September 2024 Summary Report

Pollutants		Month Records		24 Hour Records				1 Hour Records			
Name	Unit	Average Concentration	Uptime	Maximum		SAAQS Objective	Exceed Days	Maximum		SAAQS Objective	Exceed Hours
				Conc.	Date			Conc.	Date and Time		
SO <sub>2</sub>	ppb	0.9	95.8%	1.9	26-Sep	48	0	3.5	9/26/2024 09:00	172	0
H <sub>2</sub> S	ppb	1.2	95.8%	4.0	9-Sep	3.6	1	18.6	9/9/2024 06:00	11	4
PM <sub>2.5</sub>	µg/m <sup>3</sup>	10.7	100.0%	71.4	4-Sep	28	2	304.6	9/4/2024 07:00	-	-

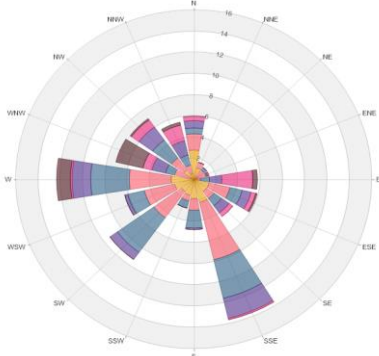
SAAQs: Saskatchewan Ambient Air Quality Standards



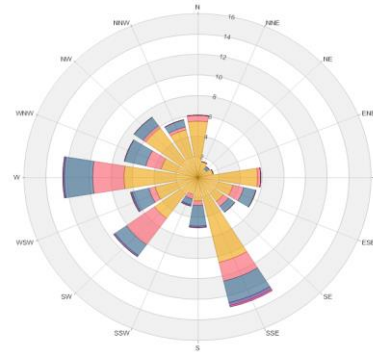
Exceedance Summary (24-Hour Average)								
24-hour Exceedance Information			Summary of other Parameters during Exceedance					
Pollutant	Date	Conc.	WS	WD	Precip.	SO <sub>2</sub>	H <sub>2</sub> S	PM <sub>2.5</sub>
H <sub>2</sub> S	9-Sep	4.0	2.0	171.8	0.0	0.9	4.0	8.4
PM <sub>2.5</sub>	4-Sep	71.4	3.9	317.4	0.0	0.6	1.1	71.4
PM <sub>2.5</sub>	18-Sep	28.4	3.8	115.9	0.6	0.6	1.0	28.4

# SESAA Wauchope Station - September 2024 Summary Report

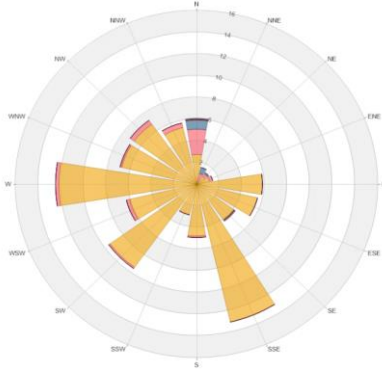
Exceedance Summary (1-Hour Average)									
1-hour Exceedance Information				Summary of Other Parameters During Exceedance					
Pollutant	Date	Time	Conc.	WS	WD	Precip.	SO <sub>2</sub>	H <sub>2</sub> S	PM <sub>2.5</sub>
H <sub>2</sub> S	9-Sep	4:00 AM	11.9	0.6	4.4	0.0	0.6	11.9	4.3
H <sub>2</sub> S	9-Sep	6:00 AM	18.6	0.4	20.8	0.0	0.7	18.6	4.6
H <sub>2</sub> S	9-Sep	7:00 AM	17.1	0.2	350.5	0.0	0.7	17.1	4.6
H <sub>2</sub> S	9-Sep	8:00 AM	15.3	0.6	143.1	0.0	0.8	15.3	4.5



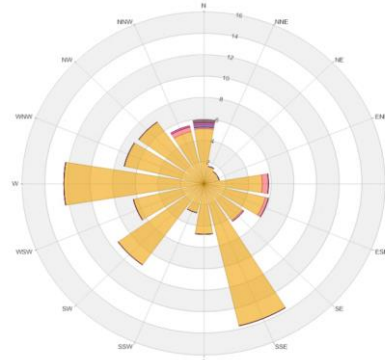
Wind Rose



Pollution Rose SO<sub>2</sub>



Pollution Rose H<sub>2</sub>S



Pollution Rose PM<sub>2.5</sub>

Parameters	Unit	Color Code for Wind Speed and Pollutant Conc. Class						
Wind Speed	m/s	0.5 -W- 1.2	1.2 -W- 2.4	2.4 -W- 3.6	3.6 -W- 4.8	4.8 -W- 6.0	W > 6.0	
SO <sub>2</sub>	ppb	0.0-C-0.8	0.8-C-1.6	1.6-C-2.4	2.4-C-3.2	3.2-C-4.0	C > 4.0	
H <sub>2</sub> S	ppb	0.0-C-2.2	2.2-C-4.4	4.4-C-6.6	6.6-C-8.8	8.8-C-11.0	C > 11.0	
PM <sub>2.5</sub>	µg/m <sup>3</sup>	0.0-C-50.0	50.0-C-100	100-C-150	150-C-200	200-C-250	C > 250.0	

### Monthly Update

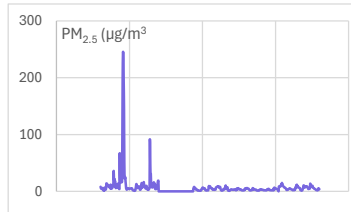
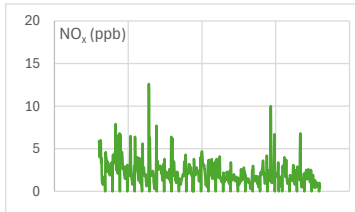
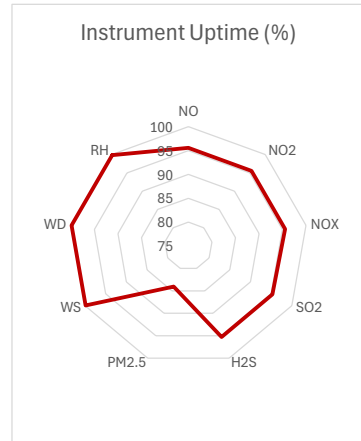
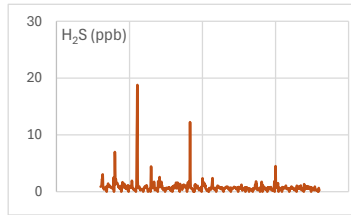
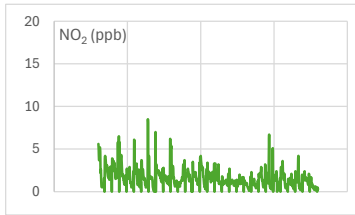
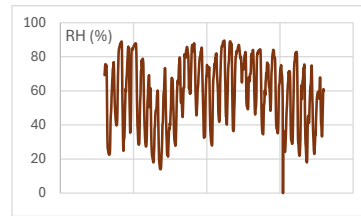
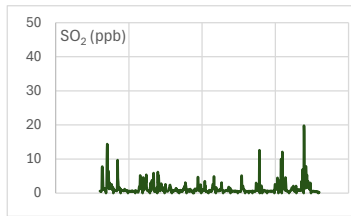
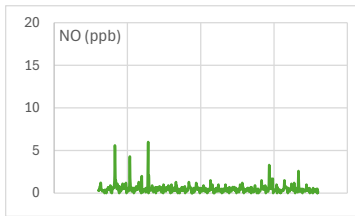
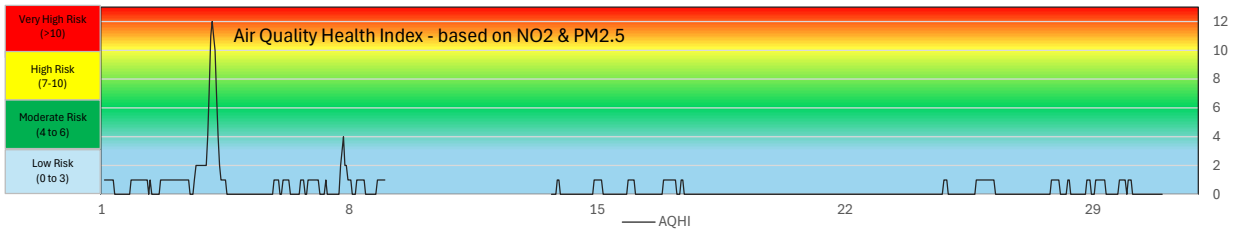
- \* All data has been zero baseline corrected, if any. Data may change after final validation process.
- \* All compliance parameters were within the Saskatchewan Ambient Air Quality Standards with the exception of four, 1-hour and one, 24-hour H<sub>2</sub>S exceedance events, and two, 24-hour PM<sub>2.5</sub> exceedance events.
- \* All compliance parameters were more than 90% operational for the month.
- \* 30 hours of data were flagged due to daily IZS checks, resulting in the loss of one hour of data each day.
- \* SO<sub>2</sub>, H<sub>2</sub>S and PM<sub>2.5</sub> analyzers were calibrated the weeks of October 21 and 28, 2024.



# SESAA Weyburn Station - September 2024 Summary Report

Pollutants		Month Records		24 Hour Records				1 Hour Records			
Name	Unit	Average Concentration	Uptime	Maximum		SAAQS Objective	Exceed Days	Maximum		SAAQS Objective	Exceed Hours
				Conc.	Date			Conc.	Date and Time		
NO	ppb	0.5	95.6%	1.1	3-Sep	-	-	6.0	9/7/2024 20:00	-	-
NO <sub>2</sub>	ppb	1.7	95.6%	3.1	3-Sep	106	0	8.5	9/7/2024 19:00	159	0
NO <sub>x</sub>	ppb	2.2	95.6%	4.2	3-Sep	-	-	12.6	9/7/2024 19:00	-	-
SO <sub>2</sub>	ppb	1.4	95.3%	3.3	2-Sep	48	0	19.8	9/28/2024 22:00	172	0
H <sub>2</sub> S	ppb	0.8	95.3%	2.0	6-Sep	3.6	0	18.8	9/6/2024 02:00	11	3
PM <sub>2.5</sub>	µg/m <sup>3</sup>	8.1	84.0%	58.3	4-Sep	28	1	245.7	9/4/2024 03:00	-	-

SAAQS: Saskatchewan Ambient Air Quality Standards



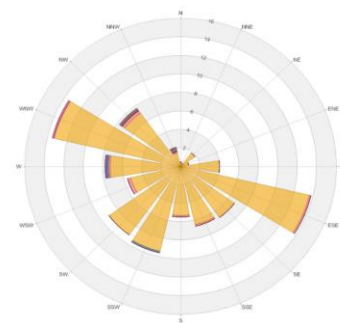
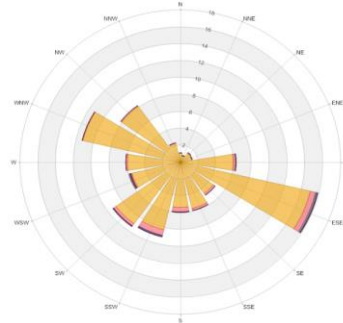
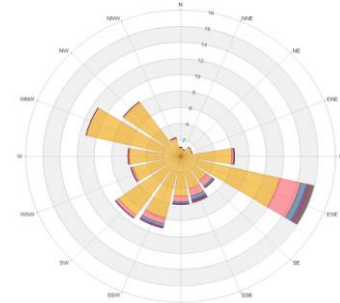
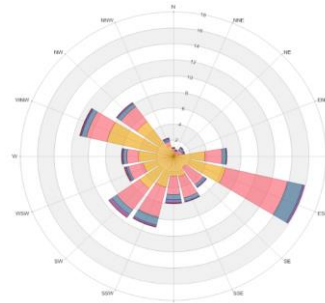
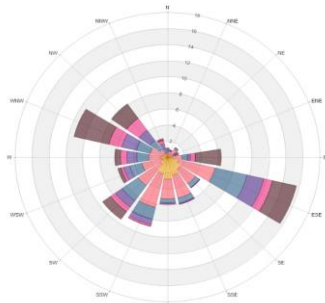
# SESAA Weyburn Station - September 2024 Summary Report

## Exceedance Summary (24-Hours Average)

24-hours Exceedance Information			Summary of other Parameters during Exceedance							
Pollutant	Date	Conc.	WS	WD	H <sub>2</sub> S	NO	NO <sub>2</sub>	NOx	SO <sub>2</sub>	PM <sub>2.5</sub>
PM <sub>2.5</sub>	4-Sep	58.3	3.9	313.7	0.9	0.6	2.2	2.8	0.7	58.3

## Exceedance Summary (1-Hour Average)

1-hour Exceedance Information				Summary of Other Parameters During Exceedance					
Pollutant	Date	Time	Conc.	WS	WD	Precip.	SO <sub>2</sub>	NO <sub>2</sub>	PM <sub>2.5</sub>
H <sub>2</sub> S	6-Sep	1:00 AM	13.5	1.7	241.3	0.0	0.6	2.3	6.1
H <sub>2</sub> S	7-Sep	2:00 AM	18.8	0.3	331.6	0.0	0.6	2.5	5.9
H <sub>2</sub> S	8-Sep	7:00 AM	12.2	0.7	185.5	0.0	0.4	2.4	N/A



Parameters	Unit	Color Code for Wind Speed and Pollutant Conc. Class						
Wind Speed	m/s	0.5 -W- 1.2	1.2 -W- 2.4	2.4 -W- 3.6	3.6 -W- 4.8	4.8 -W- 6.0	W > 6.0	
NO <sub>2</sub>	ppb	0.0 -C- 1.4	1.4 -C- 2.8	2.8 -C- 4.2	4.2 -C- 5.6	5.6 -C- 7.0	C > 7.0	
SO <sub>2</sub>	ppb	0.0 -C- 2.0	2.0 -C- 4.0	4.0 -C- 6.0	6.0 -C- 8.0	8.0 -C- 10.0	C > 10.0	
H <sub>2</sub> S	ppb	0.0 -C- 2.0	2.0 -C- 4.0	4.0 -C- 6.0	6.0 -C- 8.0	8.0 -C- 10.0	C > 10.0	
PM <sub>2.5</sub>	µg/m3	0.0 -C- 30.0	30.0 -C- 60.6	60.0 -C- 90.0	90.0 -C- 120	120 -C- 150	C > 150.0	

## Monthly Update

- \* All data has been zero baseline corrected, if any. Data may change after final validation process.
- \* All compliance parameters were within the Saskatchewan Ambient Air Quality Standards with the exception of one, 24-hour PM<sub>2.5</sub> exceedance.
- \* All compliance parameters were more than 90% operational for the month except for PM<sub>2.5</sub>.
- \* 2-4 hours of data were flagged on all gas analyzers due to power failure and flattening of data.
- \* 30 hours of data were flagged for all gas analyzers due to daily IZS checks, resulting in the loss of one hour of data each day.
- \* NOx, SO<sub>2</sub>, H<sub>2</sub>S and PM<sub>2.5</sub> analyzers were calibrated the week of October 7, 2024. Further evaluation of H<sub>2</sub>S and SO<sub>2</sub> analyzer required.

