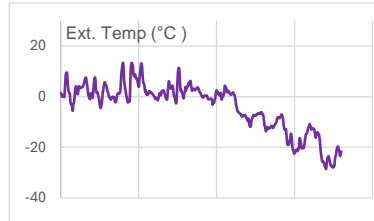
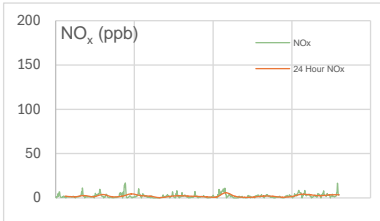
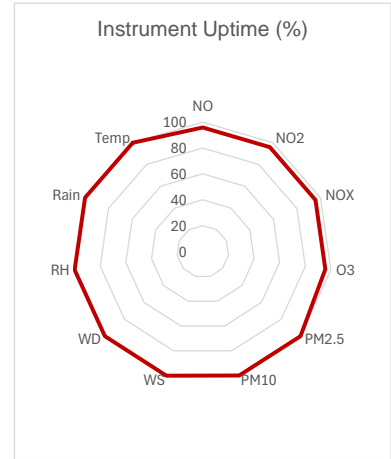
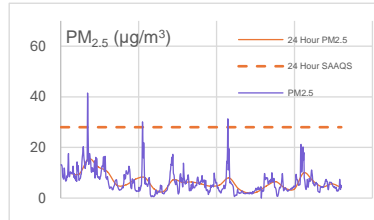
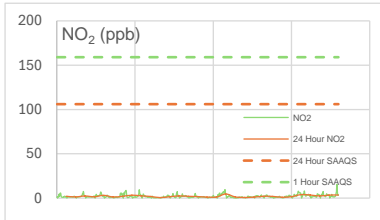
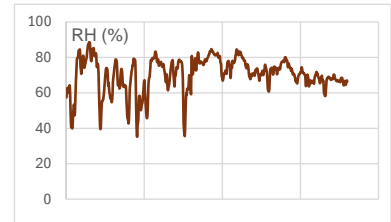
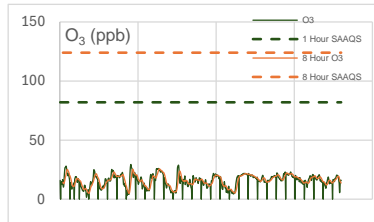
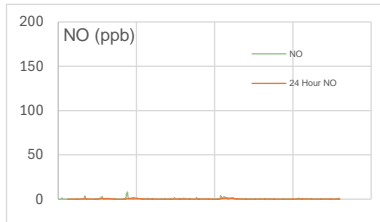
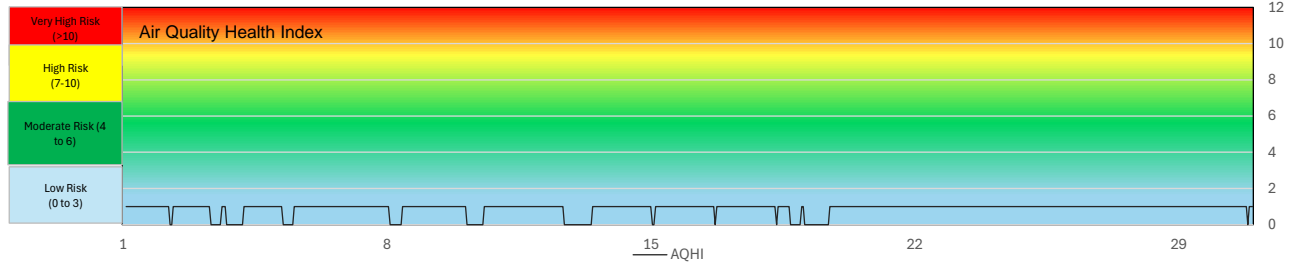


SESAA Esterhazy Station - November 2024 Summary Report

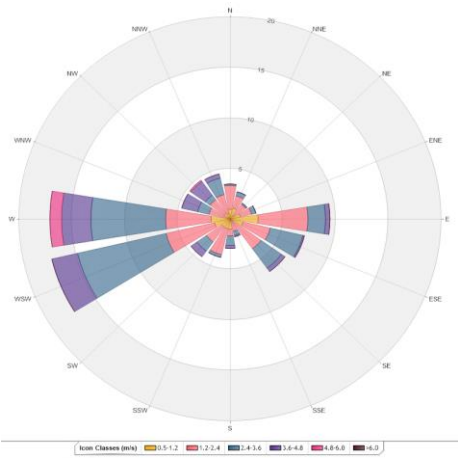
SESAA Esterhazy Station - November 2024 Summary Report											
Pollutants		Month Records		24 Hour Records				1 Hour Records			
Name	Unit	Average Concentration	Uptime	Maximum		SAAQs Objective*	Exceed Days	Maximum		SAAQs Objective	Exceed Hours
				Conc.	Date			Conc.	Date and Time		
NO	ppb	0.2	95.8%	1.4	8-Nov	-	-	8.2	11/8/2024 09:00	-	-
NO ₂	ppb	2.1	95.8%	4.6	18-Nov	106	0	15.5	11/30/2024 20:00	159	0
NO _x	ppb	2.2	95.8%	5.8	18-Nov	-	-	16.9	11/8/2024 09:00	-	-
O ₃	ppb	15.9	95.7%	25.6	11-Nov	124 (8-Hour)	0	29.4	11/8/2024 14:00	82	0
PM _{2.5}	µg/m ³	6.4	99.9%	15.6	3-Nov	28	0	41.5	11/3/2024 21:00	-	-

SAAQs: Saskatchewan Ambient Air Quality Standards

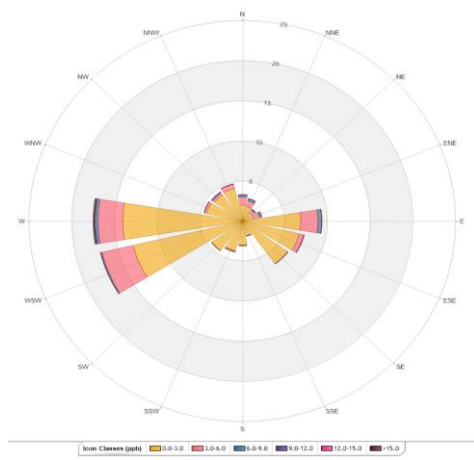


Exceedance Summary											
24-hour Exceedance Information			Summary of other Parameters during Exceedance								
Pollutant	Date	Conc.	WS	WD	Precip.	NO	NO ₂	NO _x	O ₃	PM _{2.5}	

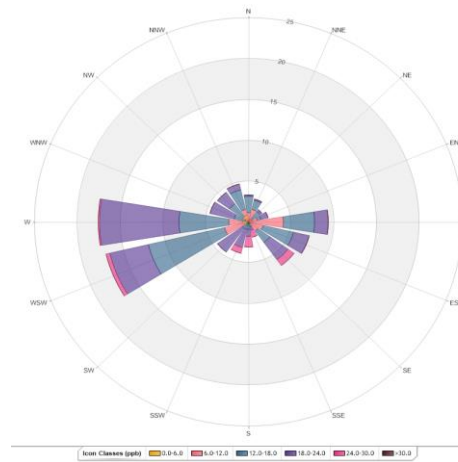
SESAA Esterhazy Station - November 2024 Summary Report



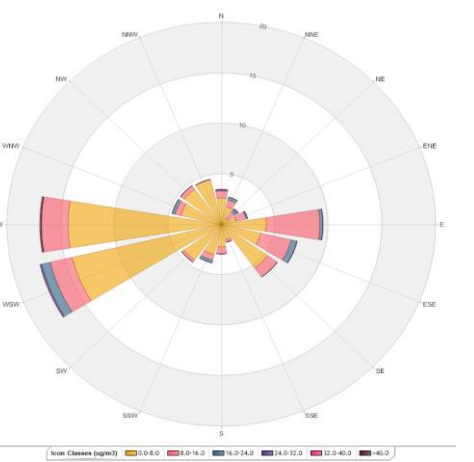
Wind Rose



Pollution Rose NO₂



Pollution Rose O₃



Pollution Rose PM_{2.5}

Parameters	Unit	Color Code for Wind Speed and Pollutant Concentration Class						
Wind Speed	m/s	0.5 -W- 1.2	1.2 -W- 2.4	2.4 -W- 3.6	3.6 -W- 4.8	4.8 -W- 6.0	W > 6.0	
NO ₂	ppb	0.0-C-3.0	3.0-C-6.0	6.0-C-9.0	9.0-C-12.0	12.0-C-15.0	C > 15.0	
O ₃	ppb	0.0-C-6.0	6.0-C-12.0	12.0-C-18.0	18.0-C-24.0	24.0-C-30.0	C > 30.0	
PM _{2.5}	µg/m ³	0.0-C-8.0	8.0-C-16.0	16.0-C-24.0	24.0-C-32.0	32.0-C-40.0	C > 40.0	

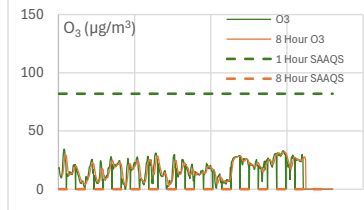
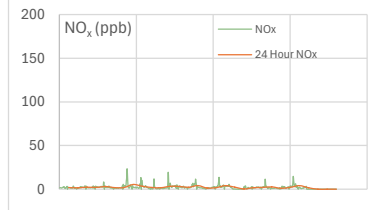
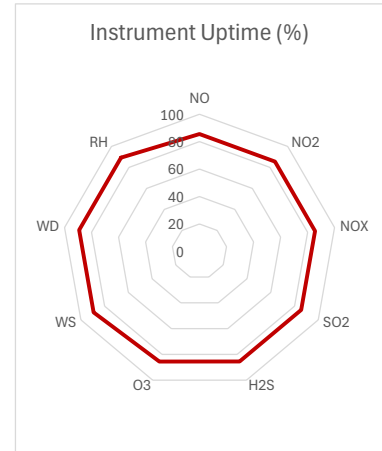
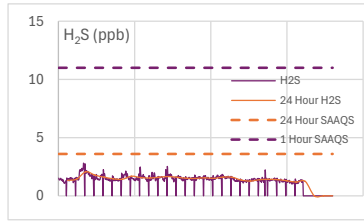
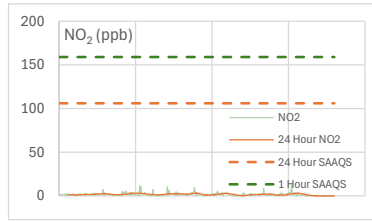
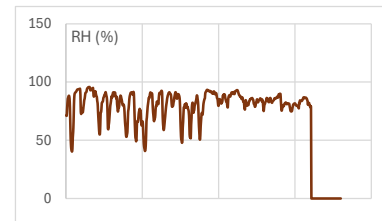
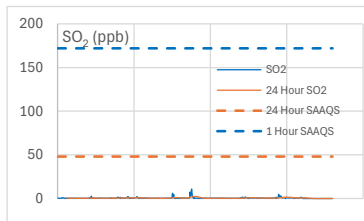
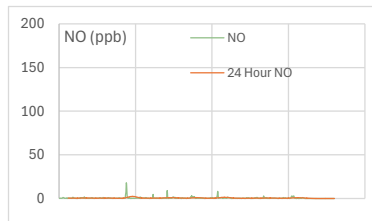
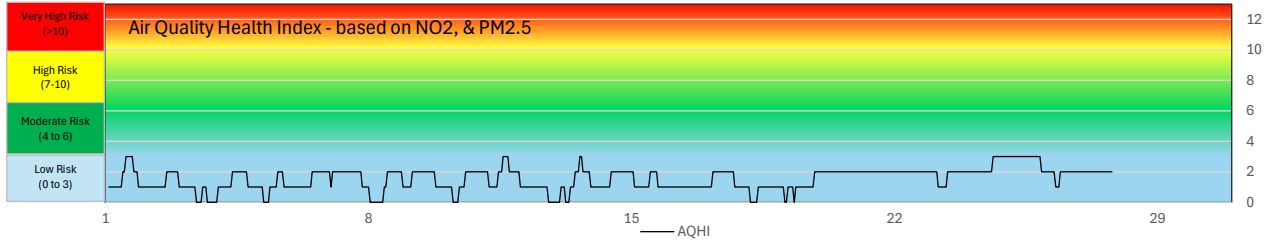
* All data has been zero baseline corrected, if any. Data may change after final validation process.
 * All compliance parameters were within the Saskatchewan Ambient Air Quality Standards.
 * All compliance parameters were less than 90% operational for the month.



SESAA Glen Ewen Station - November 2024 Summary Report

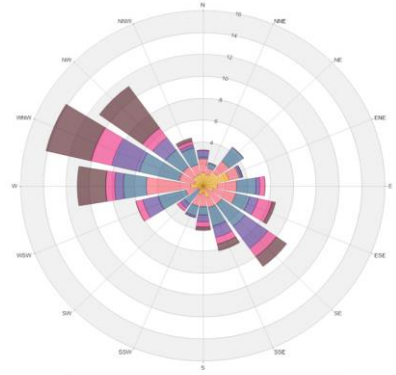
Pollutants		Month Records		24 Hour Records				1 Hour Records			
Name	Unit	Average Concentration	Uptime	Maximum		SAAQS Objective*	Exceed Days	Maximum		SAAQS Objective	Exceed Hours
				Conc.	Date			Conc.	Date and Time		
NO	ppb	0.6	85.6%	2.40	8-Nov	-	-	18	11/8/2024 8:00 AM	-	-
NO ₂	ppb	1.8	85.6%	3.12	15-Nov	106	0	12	11/26/2024 8:00 AM	159	0
NO _x	ppb	2.4	85.6%	5.39	8-Nov	-	-	23.4	11/8/2024 8:00 AM	-	-
SO ₂	ppb	0.6	85.6%	2.33	15-Nov	48	0	10.9	11/15/2024 3:00 PM	172	0
H ₂ S	ppb	1.5	85.4%	2.07	3-Nov	3.6	0	2.8	11/3/2024 6:00 PM	11	0
O ₃	ppb	17.6	85.6%	32.05	25-Nov	124 (8 hours)	0	34.4	11/1/2024 3:00 PM	82	0

SAAQS: Saskatchewan Ambient Air Quality Standards

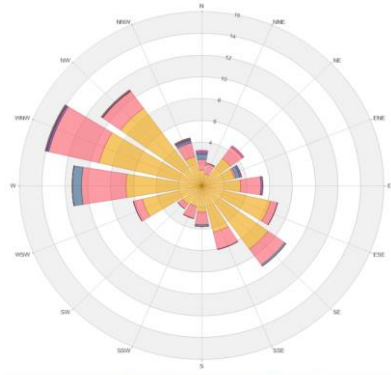


SESAA Glen Ewen Station - November 2024 Summary Report

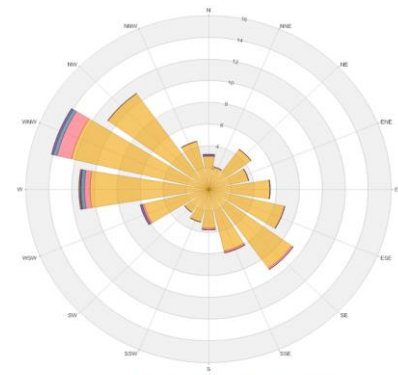
Exceedance Summary										
24-hour Exceedance Information			Summary of other Parameters during Exceedance							
Pollutant	Date	Conc.	WS	WD	H ₂ S	NO	NO ₂	NO _x	SO ₂	O ₃



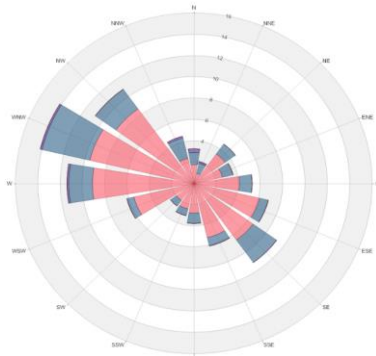
Wind Rose



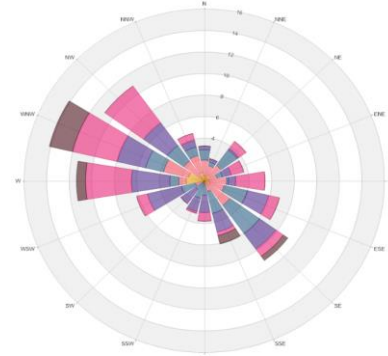
NO₂ Pollution Rose



SO₂ Pollution Rose



H₂S Pollution Rose



O₃ Pollution Rose

Parameters	Unit	Color Code for Wind Speed and Pollutant Conc. Class						
Wind Speed	m/s	0.5 -W- 1.2	1.2 -W- 2.4	2.4 -W- 3.6	3.6 -W- 4.8	4.8 -W- 6.0	W > 6.0	
NO ₂	ppb	0.0-C-2.0	2.0-C-4.0	4.0-C-6.0	6.0-C-8.0	8.0-C-10.0	C > 10.0	
SO ₂	ppb	0.0-C-2.0	2.0-C-4.0	4.0-C-6.0	6.0-C-8.0	8.0-C-10.0	C > 10.0	
H ₂ S	ppb	0.0-C-0.8	0.8-C-1.6	1.6-C-2.4	2.4-C-3.2	3.2-C-4.0	C > 4.0	
O ₃	ppb	0.0-C-6.0	6.0-C-12.0	12.0-C-18.0	18.0-C-24.0	24.0-C-30.0	C > 30.0	

Monthly Update

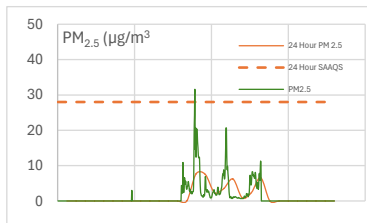
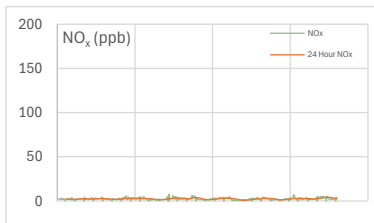
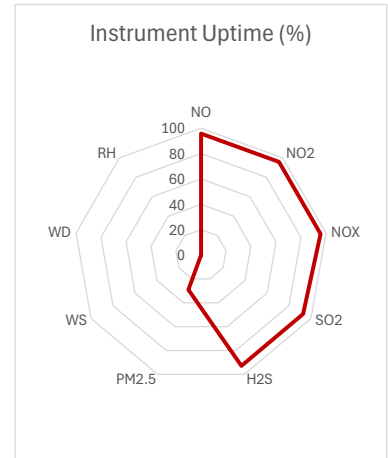
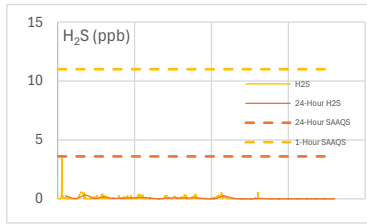
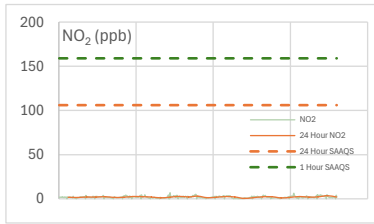
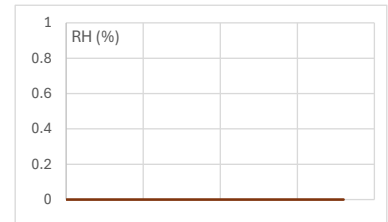
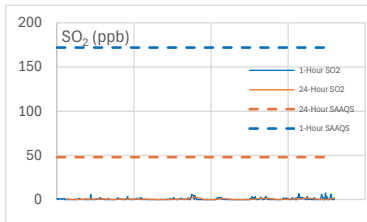
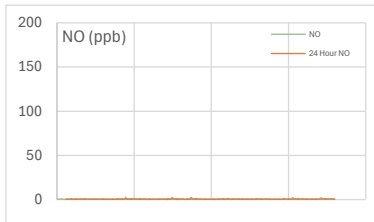
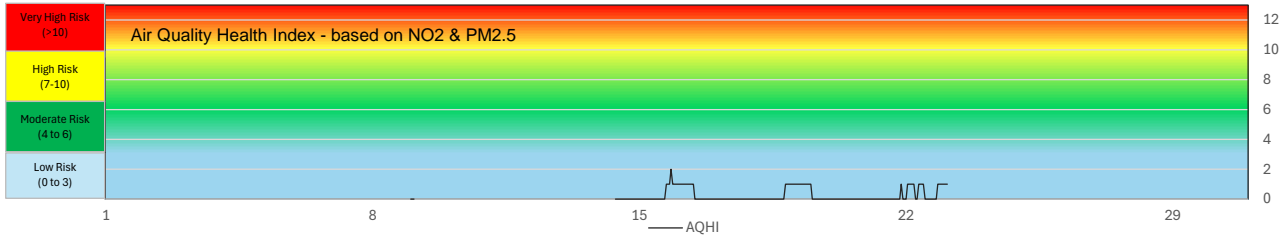
- * All data has been baseline corrected. Data may change after final validation process.
- * All compliance parameters were within the Saskatchewan Ambient Air Quality Standards.
- * All compliance parameters were less than 90% operational for the month due to station modem failure. Analyzers were confirmed to be operating however.
- * 104 hours of data flagged as "modem failure" for all analyzers.
- * 30 hours of data were flagged for all gas analyzers due to daily IZS checks, resulting in the loss of one hour of data each day.



SESAA Oxbow Station - November 2024 Summary Report

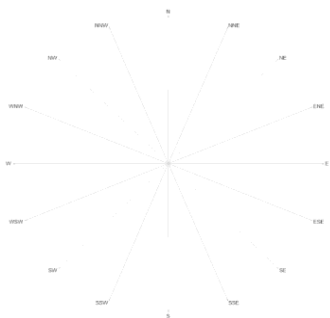
Pollutants		Month Records		24 Hour Records				1 Hour Records			
Name	Unit	Average Concentration	Uptime	Maximum		SAAQS Objective	Exceed Days	Maximum		SAAQS Objective	Exceed Hours
				Conc.	Date			Conc.	Date and Time		
NO	ppb	0.5	95.7%	0.8	29-Nov	-	-	2.8	11/8/2024 10:00 AM	-	-
NO ₂	ppb	2	95.7%	3.5	29-Nov	106	0	6.9	11/13/2024 12:00 AM	159	0
NO _x	ppb	2.5	95.7%	4.3	29-Nov	-	-	7.9	11/13/2024 12:00 AM	-	-
SO ₂	ppb	0.6	92.9%	2.5	15-Nov	48	0	7.5	11/30/2024 1:00 AM	172	0
H ₂ S	ppb	0.1	92.9%	0.3	3-Nov	3.6	0	3.5	11/1/2024 11:00 AM	11	0
PM _{2.5}	µg/m ³	4.6	29.0%	7.7	15-Nov	28	0	31.6	11/15/2024 9:00 PM	-	-

SAAQS: Saskatchewan Ambient Air Quality Standards

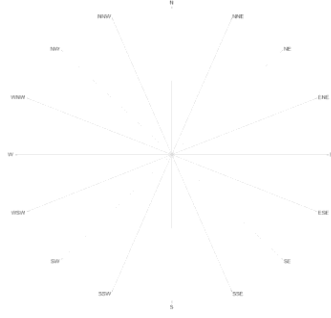


SESAA Oxbow Station - November 2024 Summary Report

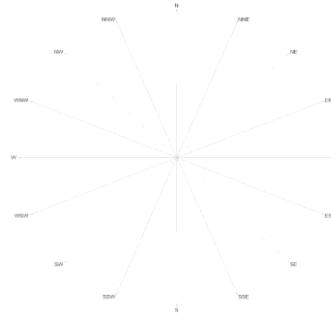
Exceedance Summary										
24-hour Exceedance Information			Summary of other Parameters during Exceedance							
Pollutant	Date	Conc.	WS	WD	H ₂ S	NO	NO ₂	NO _x	SO ₂	PM _{2.5}



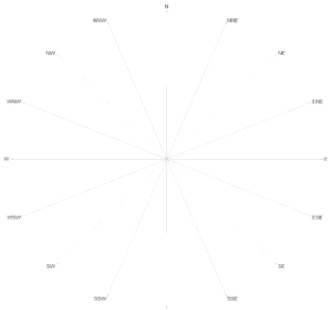
Wind Rose



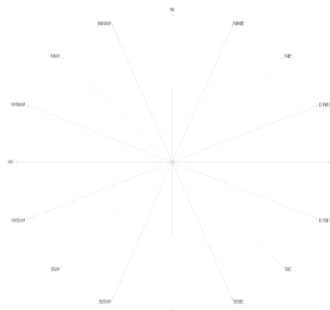
NO₂ Pollution Rose



SO₂ Pollution Rose



H₂S Pollution Rose



PM_{2.5} Pollution Rose

Parameters	Unit	Color Code for Wind Speed and Pollutant Concentration Class							
Wind Speed	m/s	N/A	N/A	N/A	N/A	N/A	N/A	N/A	N/A
NO ₂	ppb	N/A	N/A	N/A	N/A	N/A	N/A	N/A	N/A
SO ₂	ppb	N/A	N/A	N/A	N/A	N/A	N/A	N/A	N/A
H ₂ S	ppb	N/A	N/A	N/A	N/A	N/A	N/A	N/A	N/A
PM _{2.5}	µg/m ³	N/A	N/A	N/A	N/A	N/A	N/A	N/A	N/A

Monthly Update

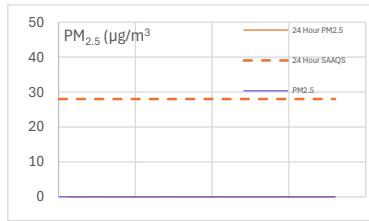
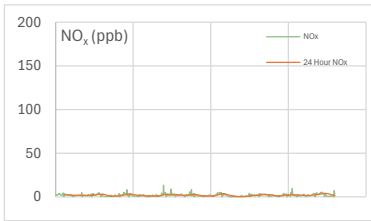
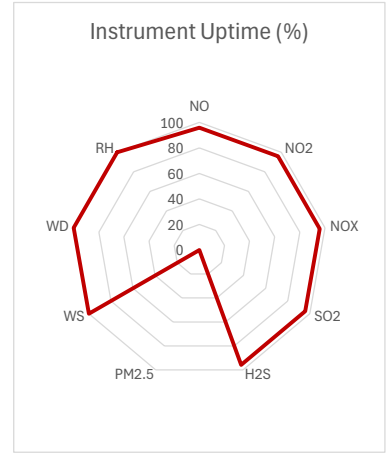
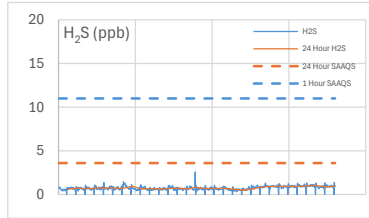
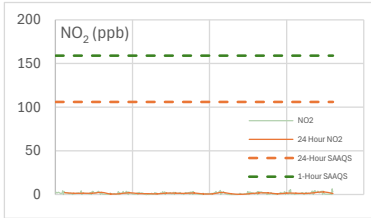
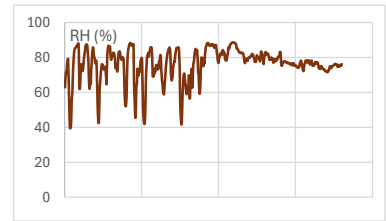
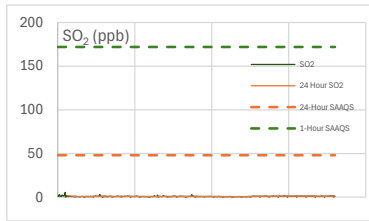
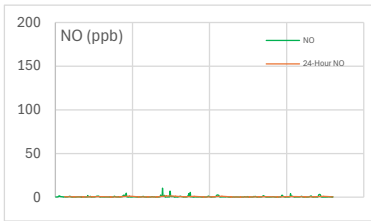
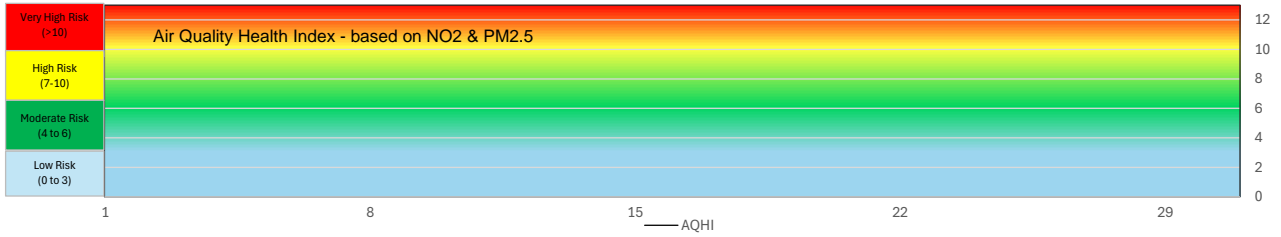
- * All data has been zero baseline corrected. Data may change after final validation process.
- * All compliance parameters were within the Saskatchewan Ambient Air Quality Standards.
- * All compliance parameters were more than 90% operational for the month, except for the PM_{2.5} and WS/WD.
- * 720 hours of data flagged as "analyzer failure" for WS/WD due to missing data. Sensor removed on October 31, 2024 for maintenance.
- * 511 hours of data flagged as "analyzer failure" for PM_{2.5} due to missing and flatlined data.
- * 30 hours of data were flagged for all gas analyzers due to daily IZS checks, resulting in the loss of one hour of data each day.



SESAA Stoughton Station - November 2024 Summary Report

Pollutants		Month Records		24 Hour Records				1 Hour Records			
Name	Unit	Average Concentration	Uptime	Maximum		SAAQS Objective	Exceed Days	Maximum		SAAQS Objective	Exceed Hours
				Conc.	Date			Conc.	Date and Time		
NO	ppb	0.5	95.8%	1.4	12-Nov	-	-	10.3	11/12/2024 2:00 PM	-	-
NO ₂	ppb	1.4	95.8%	3.0	29-Nov	106	0	6.5	11/30/2024 10:00 PM	159	0
NO _x	ppb	1.9	95.8%	3.9	29-Nov	-	-	13.4	11/12/2024 2:00 PM	-	-
SO ₂	ppb	0.9	95.8%	1.8	1-Nov	48	0	5.4	11/1/2024 7:00 PM	172	0
H ₂ S	ppb	0.8	95.8%	1.0	28-Nov	3.6	0	2.6	11/15/2024 8:00 PM	11	0
PM _{2.5}	µg/m ³	0.0	0.0%	0.0	-	28	0	No Data	16/10/2024 21:00	-	-

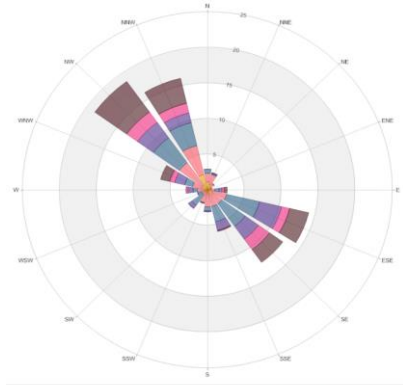
SAAQS: Saskatchewan Ambient Air Quality Standards



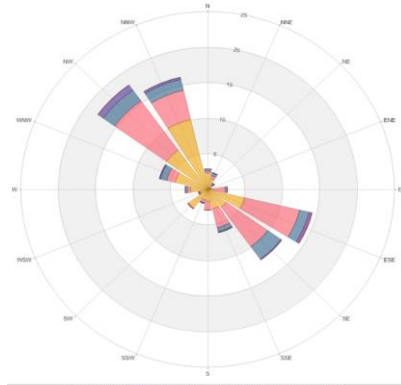
SESAA Stoughton Station - November 2024 Summary Report

Exceedance Summary

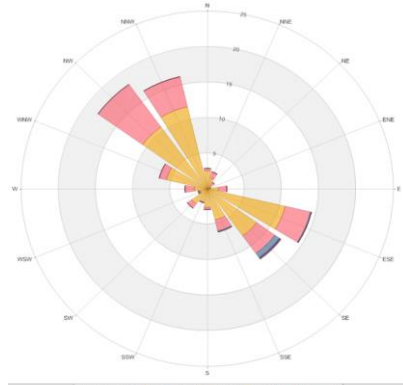
24-hour Exceedance Information			Summary of other Parameters during Exceedance							
Pollutant	Date	Conc.	WS	WD	H ₂ S	NO	NO ₂	NO _x	SO ₂	PM _{2.5}



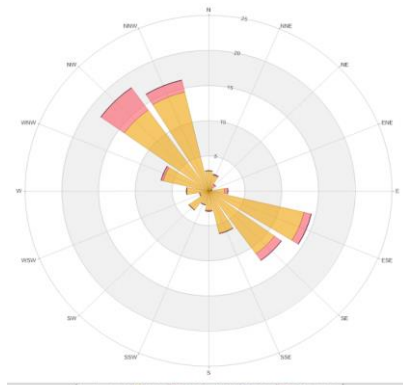
Wind Rose



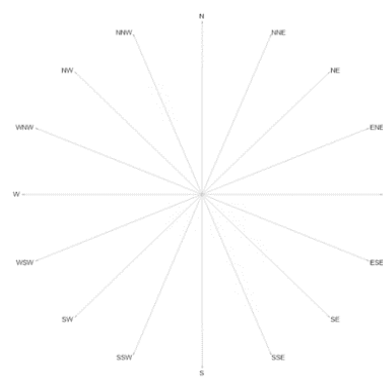
NO₂ Pollution Rose



SO₂ Pollution Rose



H₂S Pollution Rose



PM_{2.5} Pollution Rose

Parameters	Unit	Color Code for Wind Speed and Pollutant Concentration Class						
Wind Speed	m/s	0.5 -W- 1.2	1.2 -W- 2.4	2.4 -W- 3.6	3.6 -W- 4.8	4.8 -W- 6.0	W > 6.0	
NO ₂	ppb	0.5 -C- 1.2	1.2 -C- 2.4	2.4 -C- 3.6	3.6 -C- 4.8	4.8 -C- 6.0	C > 6.0	
SO ₂	ppb	0.0 -C- 1.0	1.0 -C- 2.0	2.0 -C- 3.0	3.0 -C- 4.0	4.0 -C- 5.0	C > 5.0	
H ₂ S	ppb	0.0 -C- 1.0	1.0 -C- 2.0	2.0 -C- 3.0	3.0 -C- 4.0	4.0 -C- 5.0	C > 5.0	
PM _{2.5}	µg/m ³	N/A	N/A	N/A	N/A	N/A	N/A	

Monthly Update

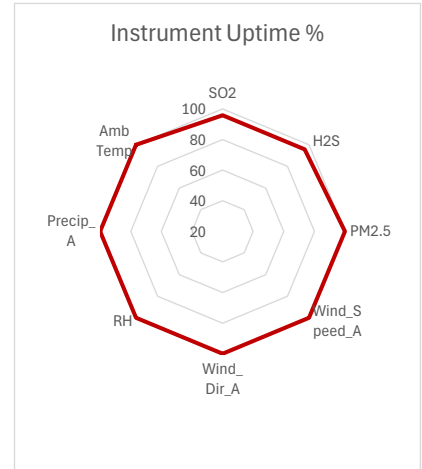
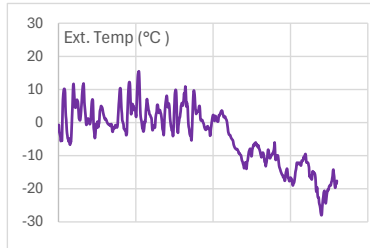
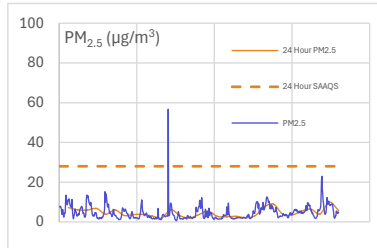
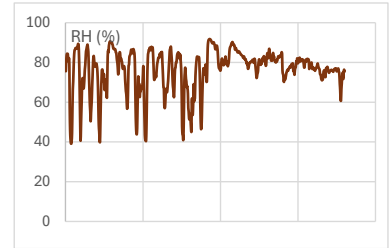
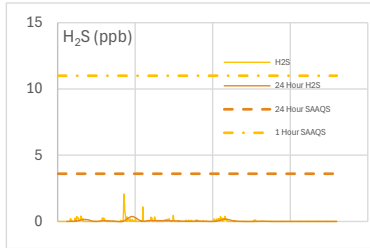
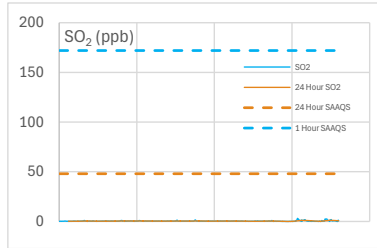
- * All data has been zero baseline corrected, if any. Data may change after final validation process.
- * All compliance parameters were within the Saskatchewan Ambient Air Quality Standards.
- * All compliance parameters were more than 90% operational for the month except for PM_{2.5}.
- * 720 hours of data flagged as "analyzer failure" for PM_{2.5} due to missing data.
- * 30 hours of data were flagged for all gas analyzers due to daily IZS checks, resulting in the loss of one hour of data each day.
- * H₂S span failures were observed when external temperatures dropped to high negatives, suggesting that seasonal temperature may affect analyzer performance. The spans normalized as temperatures rose. Data during failures were flagged but not invalidated.



SESAA Torquay Station - November 2024 Summary Report

Pollutants		Month Records		24 Hour Records				1 Hour Records			
Name	Unit	Average Concentration	Uptime	Maximum		SAAQS Objective	Exceed Days	Maximum		SAAQS Objective	Exceed Hours
				Conc.	Date			Conc.	Date and Time		
SO ₂	ppb	0.4	95.8%	1.1	29-Nov	48	0	3.1	11/26/2024 2:00 PM	172	0
H ₂ S	ppb	0.0	95.8%	0.4	8-Nov	3.6	0	2.1	11/8/2024 3:00 AM	11	0
PM _{2.5}	µg/m ³	4.7	100.0%	10.0	29-Nov	28	0	56.7	11/12/2024 5:00 PM	-	-

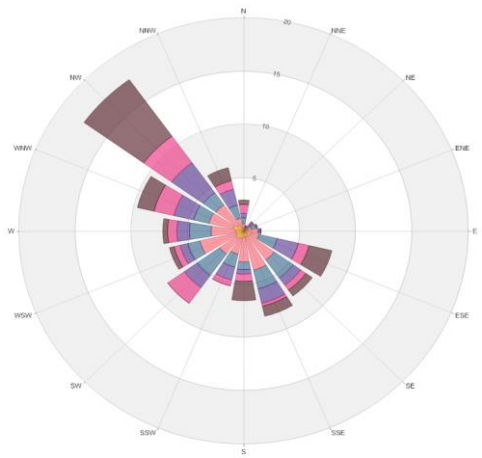
SAAQS: Saskatchewan Ambient Air Quality Standards



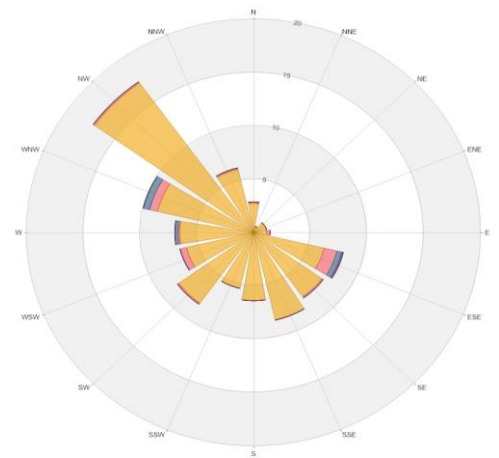
Exceedance Summary

24-hour Exceedance Information			Summary of other Parameters during Exceedance					
Pollutant	Date	Conc.	WS	WD	Precip.	SO ₂	H ₂ S	PM _{2.5}

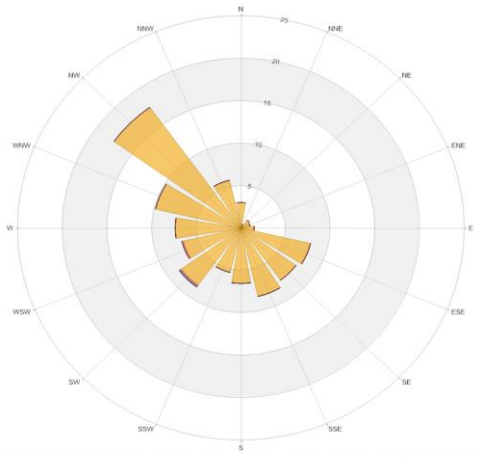
SESAA Torquay Station - November 2024 Summary Report



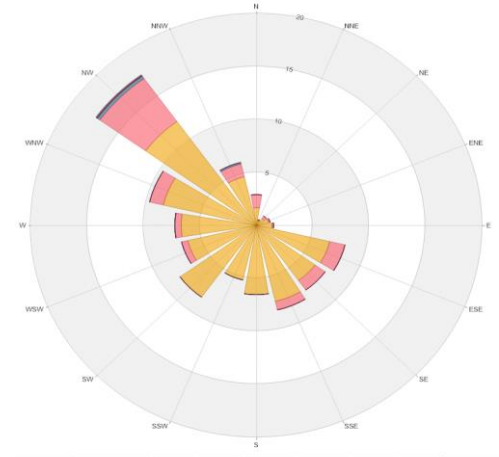
Wind Rose



Pollution Rose SO₂



Pollution Rose H₂S



Pollution Rose PM_{2.5}

Parameters	Unit	Color Code for Wind Speed and Pollutant Concentration Class						
Wind Speed	m/s	0.5 -W- 1.2	1.2 -W- 2.4	2.4 -W- 3.6	3.6 -W- 4.8	4.8 -W- 6.0	W > 6.0	
SO ₂	ppb	0.0-C-1.0	1.0-C-2.0	2.0-C-3.0	3.0-C-4.0	4.0-C-5.0	C > 5.0	
H ₂ S	ppb	0.0-C-1.0	1.0-C-2.0	2.0-C-3.0	3.0-C-4.0	4.0-C-5.0	C > 5.0	
PM _{2.5}	µg/m ³	0.0-C-8.0	8.0-C-16.0	16.0-C-24.0	24.0-C-32.0	32.0-C-40.0	C > 40.0	

Monthly Update

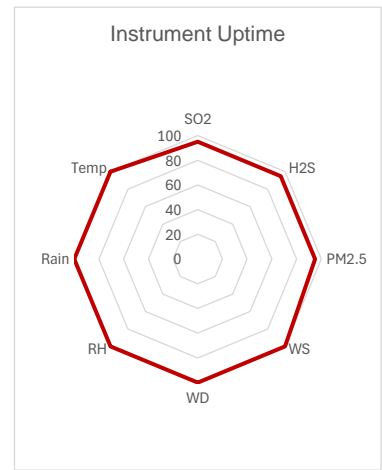
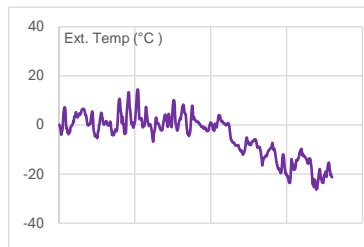
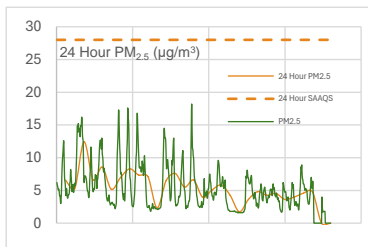
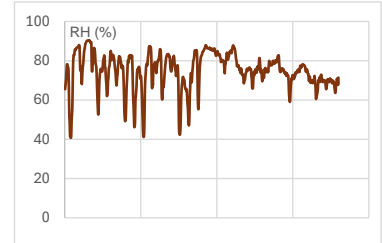
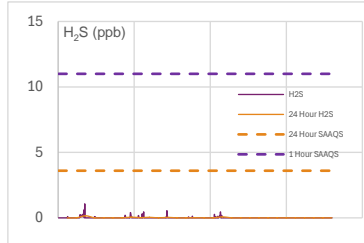
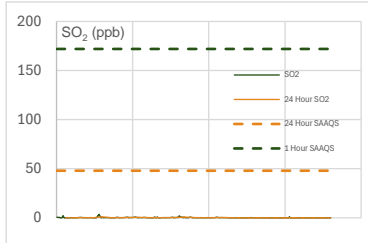
- * All data has been zero baseline corrected, if any. Data may change after final validation process.
- * All compliance parameters were within the Saskatchewan Ambient Air Quality Standards.
- * All compliance parameters were more than 90% operational for the month.
- * 30 hours of data were flagged due to daily IZS checks, resulting in the loss of one hour of data each day.
- * H₂S span failures were observed when external temperatures dropped to high negatives, suggesting that seasonal temperature may affect analyzer performance. The spans normalized as temperatures rose. Data during failures were flagged but not invalidated.



SESAA Wauchope Station - November 2024 Summary Report

Pollutants		Month Records		24 Hour Records				1 Hour Records			
Name	Unit	Average Concentration	Uptime	Maximum		SAAQS Objective	Exceed Days	Maximum		SAAQS Objective	Exceed Hours
				Conc.	Date			Conc.	Date and Time		
SO ₂	ppb	0.2	95.0%	1.0	5-Nov	48	0	3.6	11/5/2024 4:00 PM	172	0
H ₂ S	ppb	0.0	95.0%	0.2	3-Nov	3.6	0	1.07	11/3/2024 10:00 PM	11	0
PM _{2.5}	µg/m ³	5.6	95.0%	12.4	3-Nov	28	0	18.2	11/15/2024 7:00 PM	-	-

SAAQS: Saskatchewan Ambient Air Quality Standards

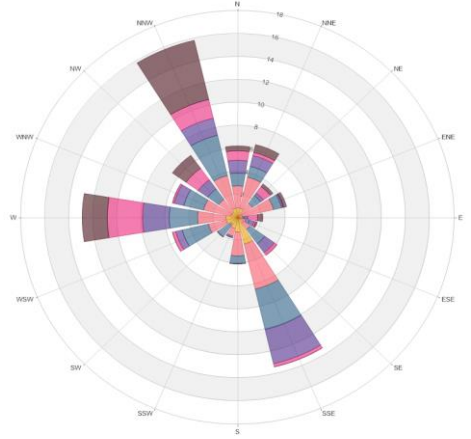


Exceedance Summary (24-Hour Average)

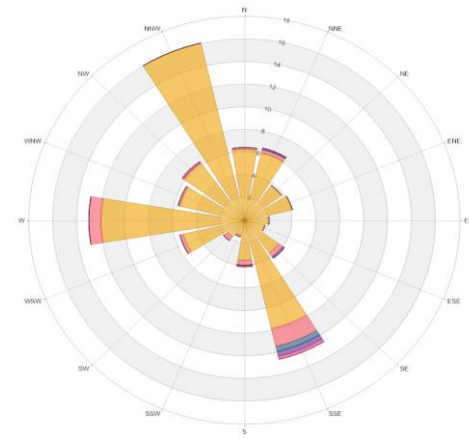
24-hour Exceedance Information			Summary of other Parameters during Exceedance					
Pollutant	Date	Conc.	WS	WD	Precip.	SO ₂	H ₂ S	PM _{2.5}

SESAA Wauchope Station - November 2024 Summary Report

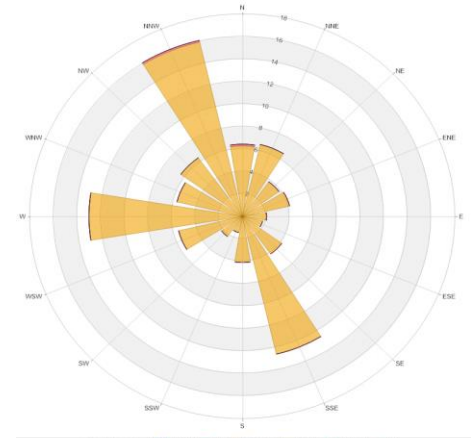
Exceedance Summary (1-Hour Average)									
1-hour Exceedance Information				Summary of Other Parameters During Exceedance					
Pollutant	Date	Time	Conc.	WS	WD	Precip.	SO ₂	H ₂ S	PM _{2.5}



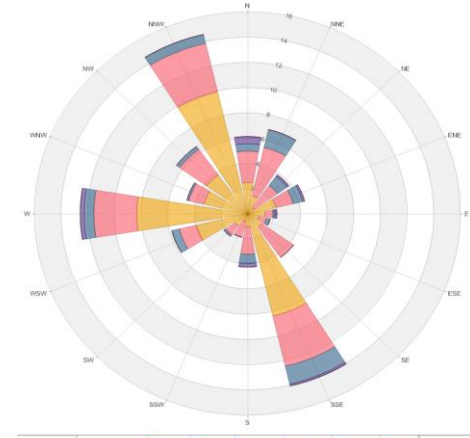
Wind Rose



Pollution Rose SO₂



Pollution Rose H₂S



Pollution Rose PM_{2.5}

Parameters	Unit	Color Code for Wind Speed and Pollutant Concentration Class						
Wind Speed	m/s	0.5 -W- 1.2	1.2 -W- 2.4	2.4 -W- 3.6	3.6 -W- 4.8	4.8 -W- 6.0	W > 6.0	
SO ₂	ppb	0.0 -C- 0.6	0.6 -C- 1.2	1.2 -C- 1.8	1.8 -C- 2.4	2.4 -C- 3.0	C > 3.0	
H ₂ S	ppb	0.0 -C- 0.6	0.6 -C- 1.2	1.2 -C- 1.8	1.8 -C- 2.4	2.4 -C- 3.0	C > 3.0	
PM _{2.5}	µg/m ³	0.0 -C- 5.0	5.0 -C- 10.0	10.0 -C- 15.0	15.0 -C- 20.0	20.0 -C- 25.0	C > 25.0	

Monthly Update

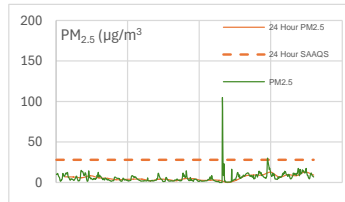
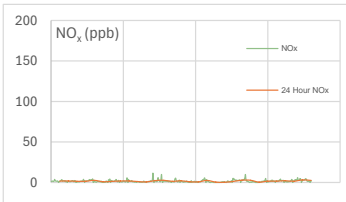
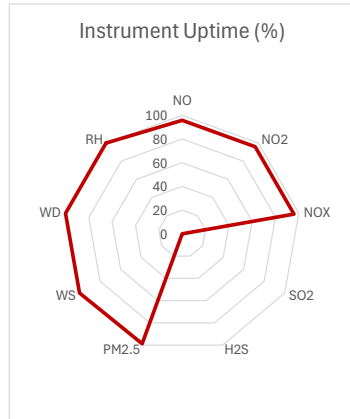
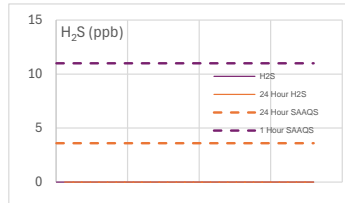
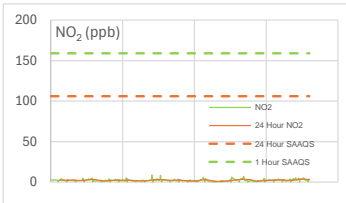
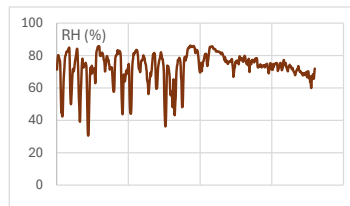
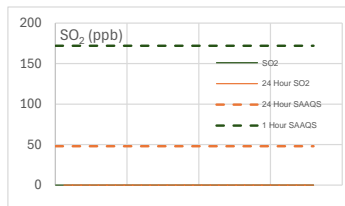
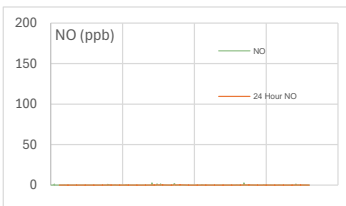
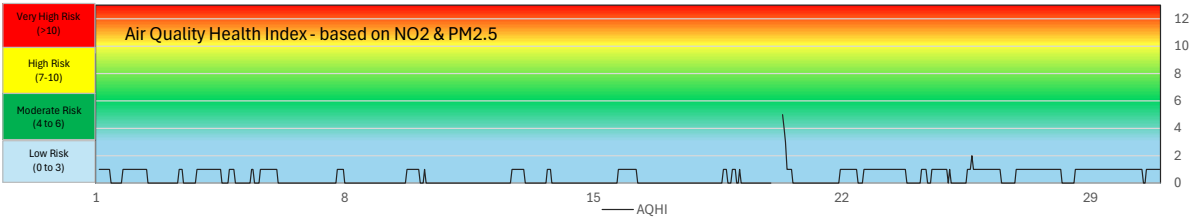
- * All data has been zero baseline corrected, if any. Data may change after final validation process.
- * All compliance parameters were within the Saskatchewan Ambient Air Quality Standards.
- * All compliance parameters were more than 90% operational for the month.
- * 30 hours of data were flagged due to daily IZS checks, resulting in the loss of one hour of data each day.
- * H₂S span failures were observed when external temperatures dropped to high negatives, suggesting that seasonal temperature may affect analyzer performance. The spans normalized as temperatures rose. Data during failures were flagged but not invalidated.



SESAA Weyburn Station - November 2024 Summary Report

Pollutants		Month Records		24 Hour Records				1 Hour Records			
Name	Unit	Average Concentration	Uptime	Maximum		SAAQS Objective	Exceed Days	Maximum		SAAQS Objective	Exceed Hours
				Conc.	Date			Conc.	Date and Time		
NO	ppb	0.0	95.8%	0.3	15-Nov	-	-	2.8	11/12/2024 18:00	-	-
NO ₂	ppb	2.2	95.8%	3.5	29-Nov	106	0	8.8	11/12/2024 18:00	159	0
NO _x	ppb	1.7	95.8%	3.2	29-Nov	-	-	11.6	11/12/2024 18:00	-	-
SO ₂	ppb	No Data	0.0%	0.0	-	48	0	No Data	0	172	0
H ₂ S	ppb	No Data	0.0%	0.0	-	3.6	0	No Data	0	11	0
PM _{2.5}	µg/m ³	6.1	98.8%	12.9	29-Nov	28	0	104.9	11/20/2024 09:00	-	-

SAAQS: Saskatchewan Ambient Air Quality Standards



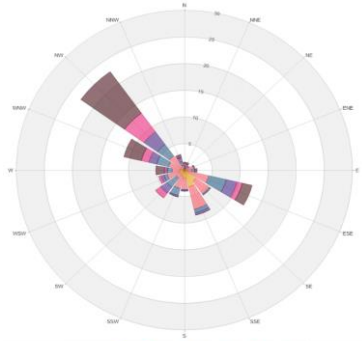
SESAA Weyburn Station - November 2024 Summary Report

Exceedance Summary (24-Hours Average)

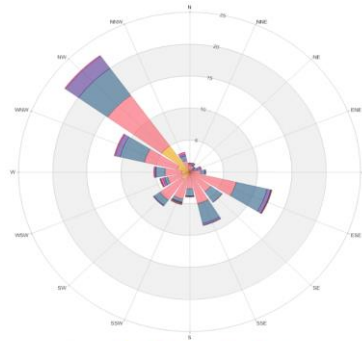
24-hours Exceedance Information			Summary of other Parameters during Exceedance							
Pollutant	Date	Conc.	WS	WD	H ₂ S	NO	NO ₂	NOx	SO ₂	PM _{2.5}

Exceedance Summary (1-Hour Average)

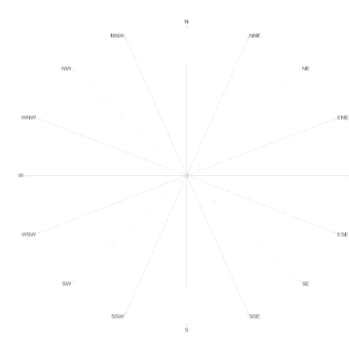
1-hour Exceedance Information				Summary of other Parameters During Exceedance					
Pollutant	Date	Time	Conc.	WS	WD	Precip.	SO ₂	NO ₂	PM _{2.5}



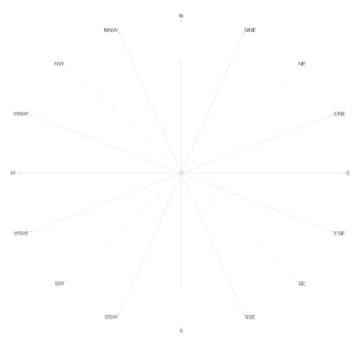
Wind Rose



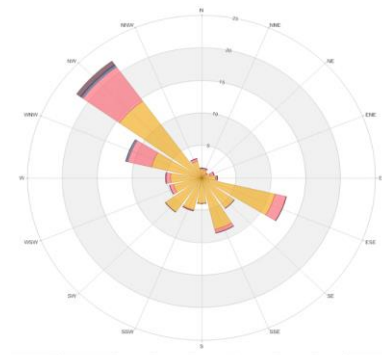
NO₂ Pollution Rose



SO₂ Pollution Rose



H₂S Pollution Rose



PM_{2.5} Pollution Rose

Parameters	Unit	Color Code for Wind Speed and Pollutant Concentration Class						
Wind Speed	m/s	0.5 -W- 1.2	1.2 -W- 2.4	2.4 -W- 3.6	3.6 -W- 4.8	4.8 -W- 6.0	W > 6.0	
NO ₂	ppb	0.0-C-1.2	1.2-C-2.4	2.4-C-3.6	3.6-C-4.8	4.8-C-6.0	C > 6.0	
SO ₂	ppb	N/A	N/A	N/A	N/A	N/A	N/A	
H ₂ S	ppb	N/A	N/A	N/A	N/A	N/A	N/A	
PM _{2.5}	µg/m ³	0.0-C-10.0	10.0-C-20.0	20.0-C-30.0	30.0-C-40.0	40.0-C-50.0	C > 50.0	

Monthly Update

- * All data has been zero baseline corrected, if any. Data may change after final validation process.
- * All compliance parameters were within the Saskatchewan Ambient Air Quality Standards.
- * All compliance parameters were more than 90% operational for the month except for H₂S and SO₂.
- * 720 hours of data flagged as "analyzer failure" for H₂S and SO₂ due to missing and flatlined data.
- * 30 hours of data were flagged for all gas analyzers due to daily IZS checks, resulting in the loss of one hour of data each day.

