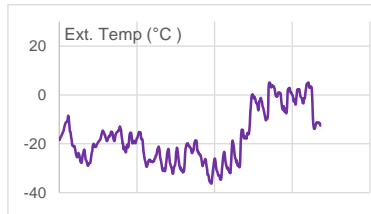
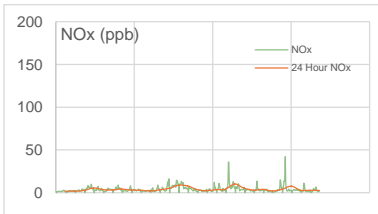
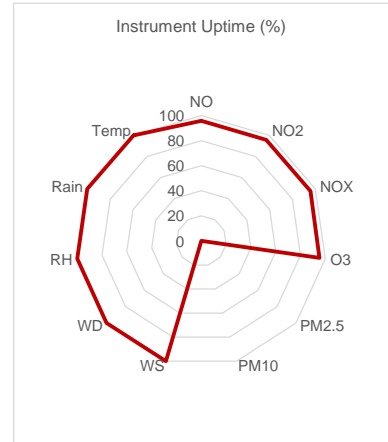
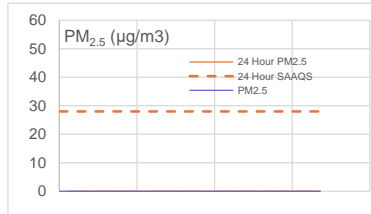
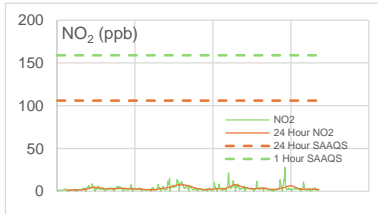
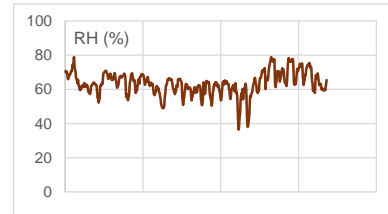
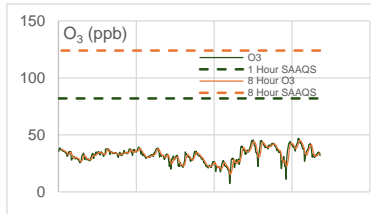
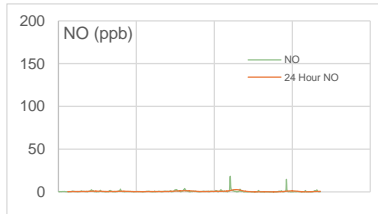
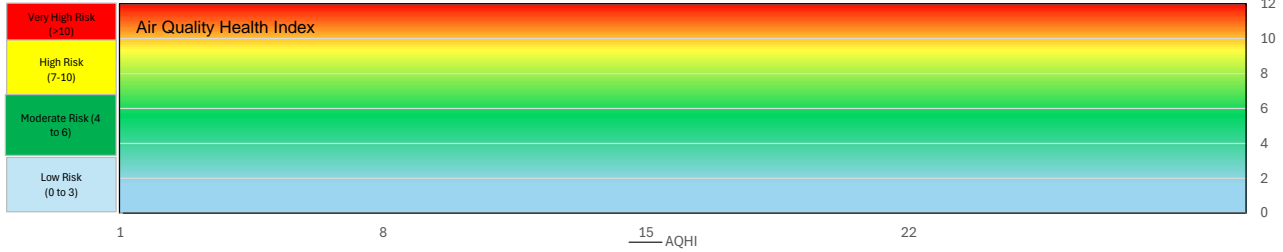


## SESAA Esterhazy Station - February 2025 Summary Report

Pollutants		Month Records		24 Hour Records				1 Hour Records			
Name	Unit	Average Concentration	Uptime	Maximum		SAAQS Objective*	Exceed Days	Maximum		SAAQS Objective	Exceed Hours
				Conc.	Date			Conc.	Date and Time		
NO	ppb	0.6	95.8%	2.7	19-Feb	-	-	18.3	2/19/2025 9:00 AM	-	-
NO <sub>2</sub>	ppb	3.4	95.8%	7.5	19-Feb	106	0	27.8	2/25/2025 9:00 AM	159	0
NO <sub>x</sub>	ppb	4	95.8%	10.2	19-Feb	-	-	42.1	2/25/2025 9:00 AM	-	-
O <sub>3</sub>	ppb	32.5	95.2%	45.1	26-Feb	124 (8-Hour)	0	47.1	2/26/2025 4:00 PM	82	0
PM <sub>2.5</sub>	µg/m <sup>3</sup>	No Data	0.0%	0.0	-	28	0	No Data	0	-	-

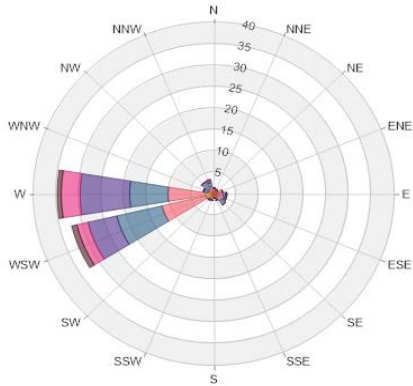
SAQS: Saskatchewan Ambient Air Quality Standards



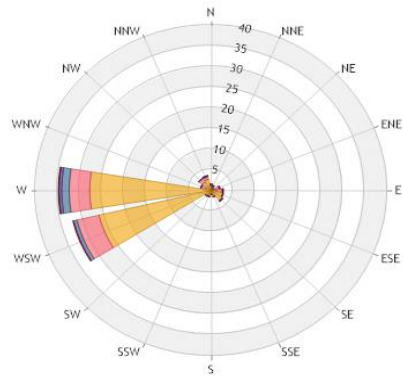
### Exceedance Summary

24-hour Exceedance Information			Summary of other Parameters during Exceedance							
Pollutant	Date	Conc.	WS	WD	Precip.	NO	NO <sub>2</sub>	NO <sub>x</sub>	O <sub>3</sub>	PM <sub>2.5</sub>

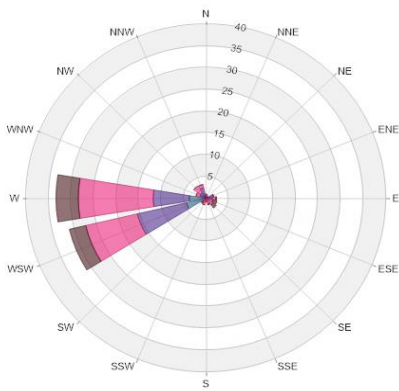
# SESAA Esterhazy Station - February 2025 Summary Report



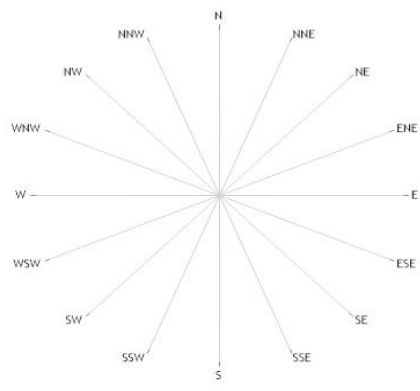
**Icon Classes (m/s)**  
 0.5-1.2 (Yellow), 1.2-2.4 (Red), 2.4-3.6 (Blue), 3.6-4.8 (Purple), 4.8-6.0 (Pink), >6.0 (Brown)  
**Wind Rose**



**Icon Classes (ppb)**  
 0-4 (Yellow), 4-8 (Red), 8-12 (Blue), 12-16 (Purple), 16-20 (Pink), >20.0 (Brown)  
**Pollution Rose NO<sub>2</sub>**



**Icon Classes (ppb)**  
 0.0-8.0 (Yellow), 8.0-16.0 (Red), 16.0-24.0 (Blue), 24.0-32.0 (Purple), 32.0-40.0 (Pink), >40.0 (Brown)  
**Pollution Rose O<sub>3</sub>**



**Pollution Rose PM<sub>2.5</sub>**

Parameters	Unit	Color Code for Wind Speed and Pollutant Concentration Class						
Wind Speed	m/s	0.5 -W- 1.2	1.2 -W- 2.4	2.4 -W- 3.6	3.6 -W- 4.8	4.8 -W- 6.0	W > 6.0	
NO <sub>2</sub>	ppb	0.0-C-4.0	4.0-C-8.0	8.0-C-12.0	12.0-C-16.0	16.0-C-20.0	C > 20.0	
O <sub>3</sub>	ppb	0.0-C-8.0	8.0-C-16.0	16.0-C-24.0	24.0-C-32.0	32.0-C-40.0	C > 40.0	
PM <sub>2.5</sub>	µg/m <sup>3</sup>	N/A	N/A	N/A	N/A	N/A	N/A	

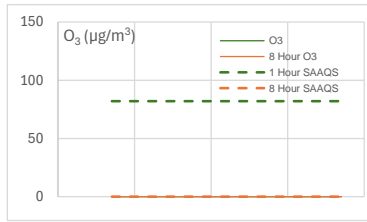
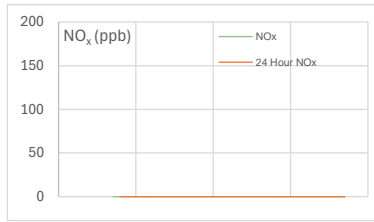
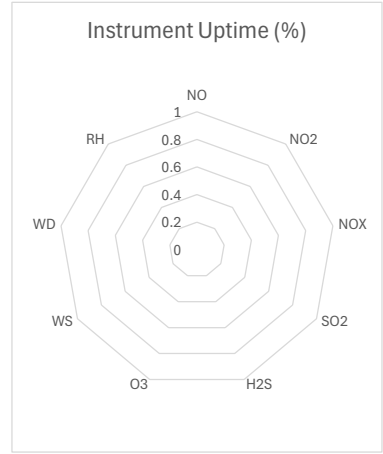
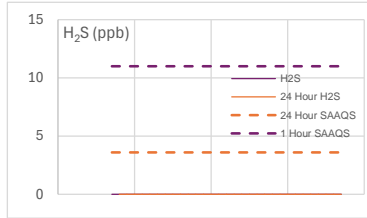
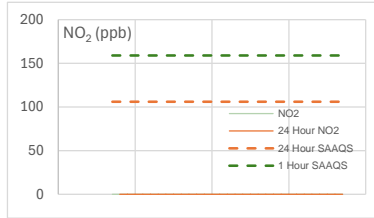
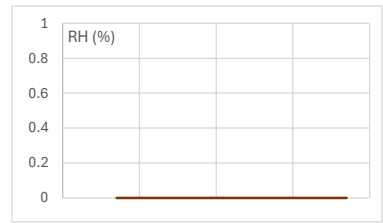
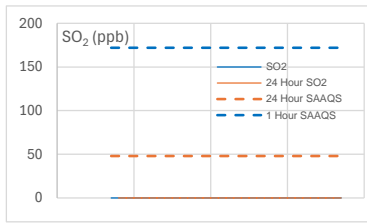
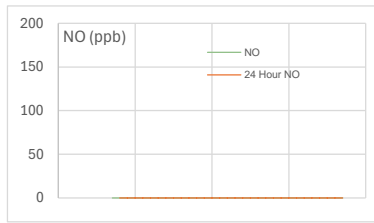
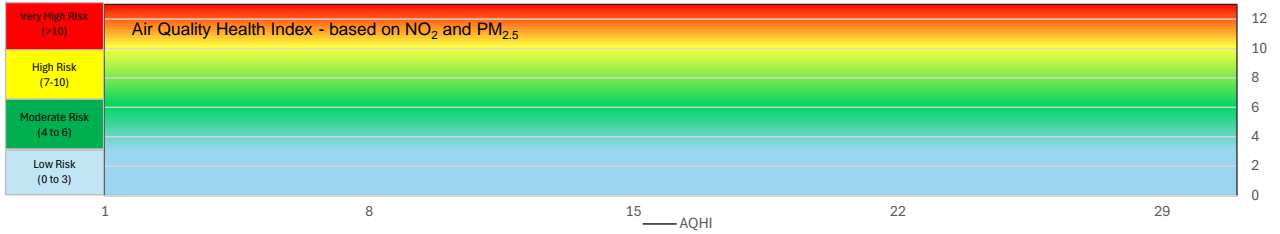
\* All data has been zero drift and baseline corrected, if needed. Data may change after final validation process.  
 \* All compliance parameters were within the Saskatchewan Ambient Air Quality Standards.  
 \* All compliance parameters were more than 90% operational for the month with the exception of PM<sub>2.5</sub> monitor.  
 \* A total of 672 hours of data flagged for PM<sub>2.5</sub> due to an internal pump issue.  
 \* One hour of data was flagged for all gas analyzers due to daily IZS checks, resulting in the loss of one hour of data each day.  
 \* Intermittent cabinet internal temperature fluctuations were observed during the reporting period. Data was flagged, however the integrity of the data appears to be unaffected and was not invalidated.



# SESAA Glen Ewen Station - February 2025 Summary Report

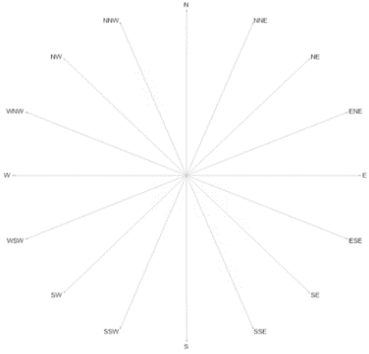
Pollutants		Month Records		24 Hour Records				1 Hour Records			
Name	Unit	Average Concentration	Uptime	Maximum		SAAQS Objective*	Exceed Days	Maximum		SAAQS Objective	Exceed Hours
				Conc.	Date			Conc.	Date and Time		
NO	ppb	No Data	0.0%	0.00	-	-	-	No Data	N/A	-	-
NO <sub>2</sub>	ppb	No Data	0.0%	0.00	-	106	0	No Data	N/A	159	0
NO <sub>x</sub>	ppb	No Data	0.0%	0.00	-	-	-	No Data	N/A	-	-
SO <sub>2</sub>	ppb	No Data	0.0%	0.00	-	48	0	No Data	N/A	172	0
H <sub>2</sub> S	ppb	No Data	0.0%	0.00	-	3.6	0	No Data	N/A	11	0
O <sub>3</sub>	ppb	No Data	0.0%	0.00	-	124 (8 hours)	0	No Data	N/A	82	0

SAAQS: Saskatchewan Ambient Air Quality Standards

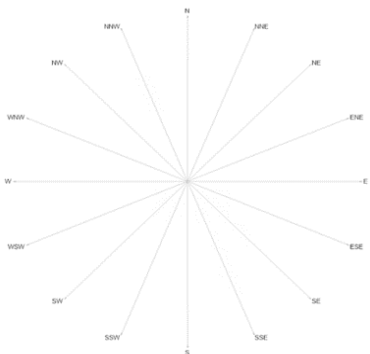


# SESAA Glen Ewen Station - February 2025 Summary Report

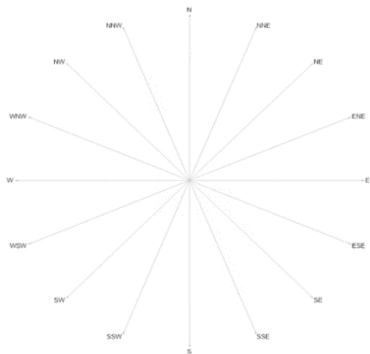
Exceedance Summary										
24-hour Exceedance Information			Summary of other Parameters during Exceedance							
Pollutant	Date	Conc.	WS	WD	H <sub>2</sub> S	NO	NO <sub>2</sub>	NO <sub>x</sub>	SO <sub>2</sub>	O <sub>3</sub>



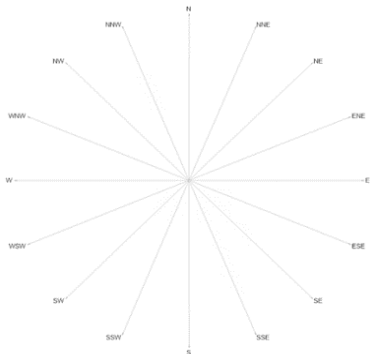
Wind Rose



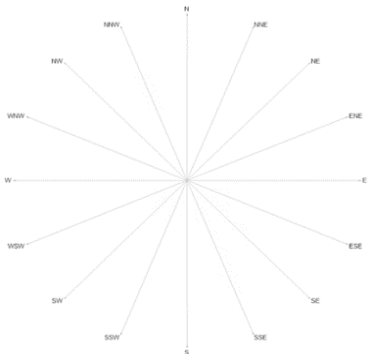
NO<sub>2</sub> Pollution Rose



SO<sub>2</sub> Pollution Rose



H<sub>2</sub>S Pollution Rose



O<sub>3</sub> Pollution Rose

Parameters	Unit	Color Code for Wind Speed and Pollutant Conc. Class							
Wind Speed	m/s	N/A	N/A	N/A	N/A	N/A	N/A	N/A	N/A
NO <sub>2</sub>	ppb	N/A	N/A	N/A	N/A	N/A	N/A	N/A	N/A
SO <sub>2</sub>	ppb	N/A	N/A	N/A	N/A	N/A	N/A	N/A	N/A
H <sub>2</sub> S	ppb	N/A	N/A	N/A	N/A	N/A	N/A	N/A	N/A
O <sub>3</sub>	ppb	N/A	N/A	N/A	N/A	N/A	N/A	N/A	N/A

## Monthly Update

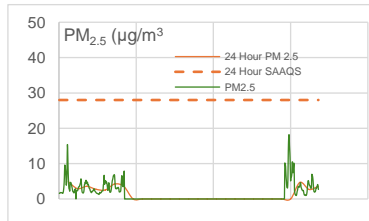
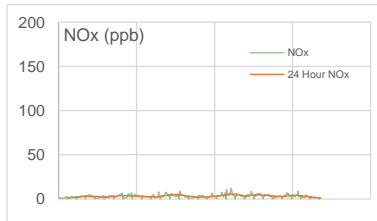
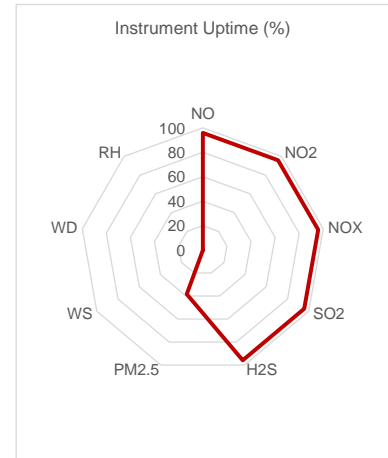
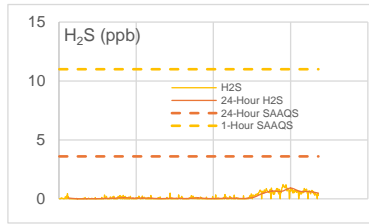
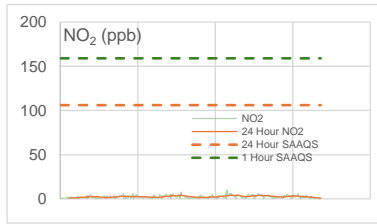
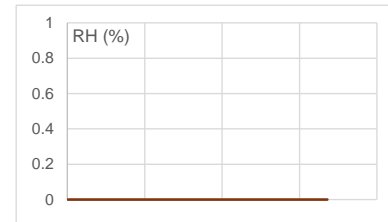
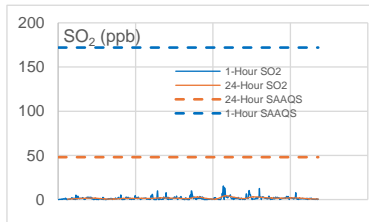
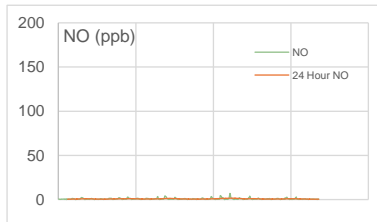
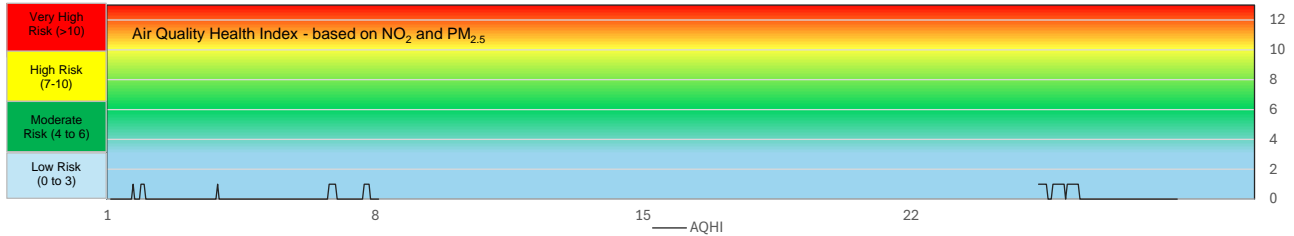
\* No data was available during the month due to operational issues with the on-site modem.



## SESAA Oxbow Station - February 2025 Summary Report

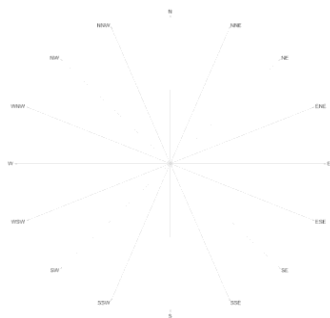
Pollutants		Month Records		24 Hour Records				1 Hour Records			
Name	Unit	Average Concentration	Uptime	Maximum		SAAQS Objective	Exceed Days	Maximum		SAAQS Objective	Exceed Hours
				Conc.	Date			Conc.	Date and Time		
NO	ppb	0.8	95.8%	1.6	19-Feb	-	-	7	2/19/2025 11:00 AM	-	-
NO <sub>2</sub>	ppb	2.4	95.8%	4.0	19-Feb	106	0	9.8	2/18/2025 11:00 PM	159	0
NO <sub>x</sub>	ppb	3.2	95.8%	5.5	19-Feb	-	-	12.3	2/19/2025 11:00 AM	-	-
SO <sub>2</sub>	ppb	1.6	95.8%	4.3	18-Feb	48	0	15.4	2/18/2025 7:00 PM	172	0
H <sub>2</sub> S	ppb	0.2	95.8%	0.9	25-Feb	3.6	0	1.2	2/25/2025 4:00 AM	11	0
PM <sub>2.5</sub>	µg/m <sup>3</sup>	3.9	38.2%	4.9	1-Feb	28	0	18.2	2/25/2025 8:00 PM	-	-

SAAQS: Saskatchewan Ambient Air Quality Standards

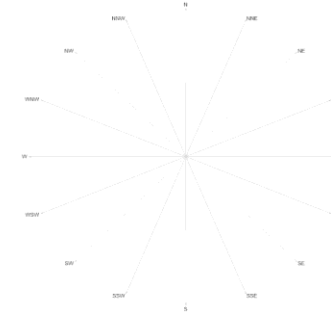


# SESAA Oxbow Station - February 2025 Summary Report

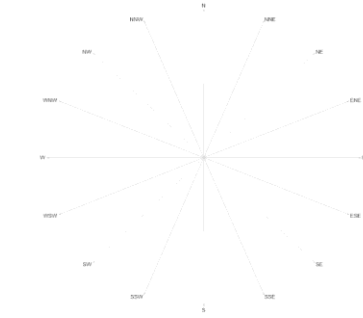
Exceedance Summary										
24-hour Exceedance Information			Summary of other Parameters during Exceedance							
Pollutant	Date	Conc.	WS	WD	H <sub>2</sub> S	NO	NO <sub>2</sub>	NO <sub>x</sub>	SO <sub>2</sub>	PM <sub>2.5</sub>



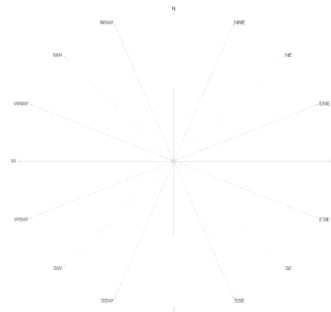
Wind Rose



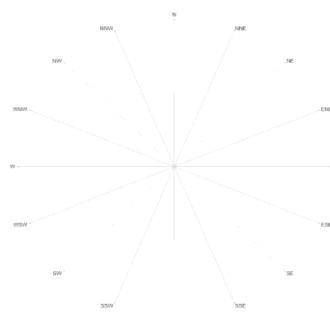
NO<sub>2</sub> Pollution Rose



SO<sub>2</sub> Pollution Rose



H<sub>2</sub>S Pollution Rose



PM<sub>2.5</sub> Pollution Rose

Parameters	Unit	Color Code for Wind Speed and Pollutant Concentration Class							
Wind Speed	m/s	N/A	N/A	N/A	N/A	N/A	N/A	N/A	N/A
NO <sub>2</sub>	ppb	N/A	N/A	N/A	N/A	N/A	N/A	N/A	N/A
SO <sub>2</sub>	ppb	N/A	N/A	N/A	N/A	N/A	N/A	N/A	N/A
H <sub>2</sub> S	ppb	N/A	N/A	N/A	N/A	N/A	N/A	N/A	N/A
PM <sub>2.5</sub>	µg/m <sup>3</sup>	N/A	N/A	N/A	N/A	N/A	N/A	N/A	N/A

## Monthly Update

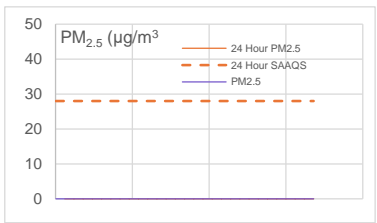
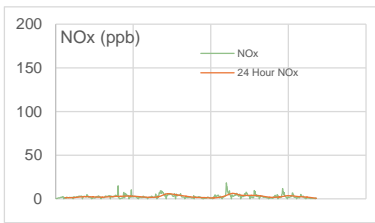
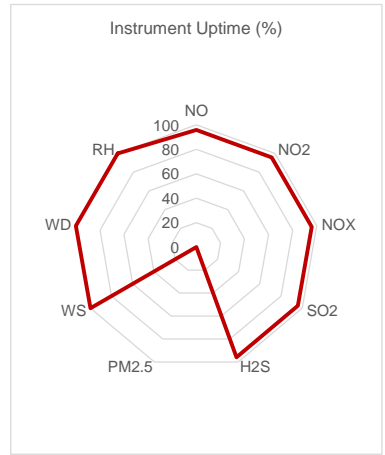
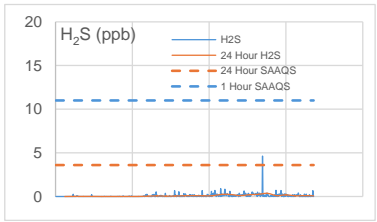
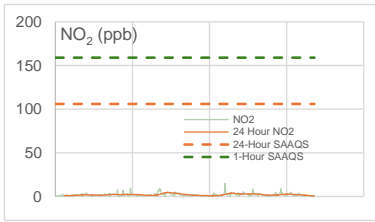
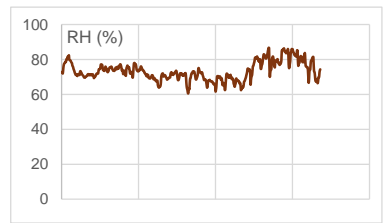
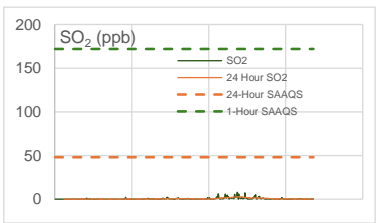
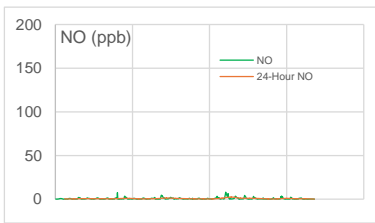
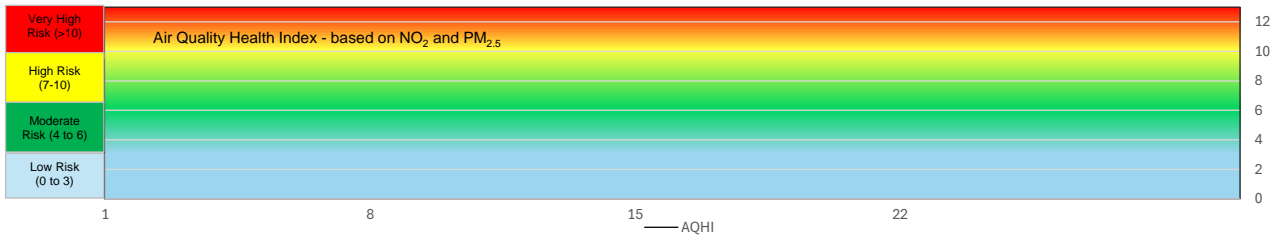
- \* All data has been zero drift and baseline corrected, if needed. Data may change after final validation process.
- \* All compliance parameters were within the Saskatchewan Ambient Air Quality Standards.
- \* All compliance parameters were more than 90% operational for the month, except for PM<sub>2.5</sub>
- \* A total of 672 hours of wind speed (WS) and wind direction (WD) data was missing due to the sensor failing. The sensor was removed for maintenance.
- \* A total of 415 hours of PM<sub>2.5</sub> data from February 8 to 25 was flagged and invalidated.
- \* One hour of data were flagged for all gas analyzers due to daily IZS checks, resulting in the loss of one hour of data each day.
- \* H<sub>2</sub>S and SO<sub>2</sub> span failures were intermittently observed at Oxbow during monitoring period that may have been the result of seasonal ambient temperature fluctuations. As temperatures returned to positive ranges, spans normalized. Data recorded during these failures were flagged but not invalidated.



# SESAA Stoughton Station - February 2025 Summary Report

Pollutants		Month Records		24 Hour Records				1 Hour Records			
Name	Unit	Average Concentration	Uptime	Maximum		SAAQS Objective	Exceed Days	Maximum		SAAQS Objective	Exceed Hours
				Conc.	Date			Conc.	Date and Time		
NO	ppb	0.6	95.8%	2.4	19-Feb	-	-	8.0	2/19/2025 10:00 AM	-	-
NO <sub>2</sub>	ppb	2.0	95.8%	4.5	12-Feb	106	0	15.0	2/19/2025 8:00 AM	159	0
NO <sub>x</sub>	ppb	2.7	95.8%	6.2	19-Feb	-	-	18.3	2/19/2025 8:00 AM	-	-
SO <sub>2</sub>	ppb	0.5	95.8%	2.7	20-Feb	48	0	7.9	2/20/2025 6:00 PM	172	0
H <sub>2</sub> S	ppb	0.1	95.8%	0.4	23-Feb	3.6	0	4.6	2/23/2025 11:00 AM	11	0
PM <sub>2.5</sub>	µg/m <sup>3</sup>	No Data	0.0%	0.0	-	28	0	No Data	-	-	-

SAAQS: Saskatchewan Ambient Air Quality Standards



# SESAA Stoughton Station - February 2025 Summary Report

## Exceedance Summary

24-hour Exceedance Information			Summary of other Parameters during Exceedance							
Pollutant	Date	Conc.	WS	WD	H <sub>2</sub> S	NO	NO <sub>2</sub>	NO <sub>x</sub>	SO <sub>2</sub>	PM <sub>2.5</sub>



Parameters	Unit	Color Code for Wind Speed and Pollutant Concentration Class						
Wind Speed	m/s	0.5 -W- 1.2	1.2 -W- 2.4	2.4 -W- 3.6	3.6 -W- 4.8	4.8 -W- 6.0	W > 6.0	
NO <sub>2</sub>	ppb	0.0 -C- 1.2	1.2 -C- 2.4	2.4 -C- 3.6	3.6 -C- 4.8	4.8 -C- 6.0	C > 6.0	
SO <sub>2</sub>	ppb	0.0 -C- 1.2	1.2 -C- 2.4	2.4 -C- 3.6	3.6 -C- 4.8	4.8 -C- 6.0	C > 6.0	
H <sub>2</sub> S	ppb	0.0-C-1.0	1.0-C-2.0	2.0-C-3.0	3.0-C-4.0	4.0-C-5.0	C > 5.0	
PM <sub>2.5</sub>	µg/m <sup>3</sup>	N/A	N/A	N/A	N/A	N/A	N/A	

## Monthly Update

- \* All data has been zero drift and baseline corrected, if needed. Data may change after final validation process.
- \* All compliance parameters were within the Saskatchewan Ambient Air Quality Standards.
- \* All compliance parameters were more than 90% operational for the month except for PM<sub>2.5</sub>.
- \* PM<sub>2.5</sub> was removed from service in December 2024 for repair.
- \* One hour of data were flagged for all gas analyzers due to daily IZS checks, resulting in the loss of one hour of data each day.
- \* H<sub>2</sub>S span failures were observed when ambient temperatures dropped to high negatives, suggesting that seasonal temperature may affect analyzer performance. The spans normalized as temperatures rose. Data during failures were flagged but not invalidated.

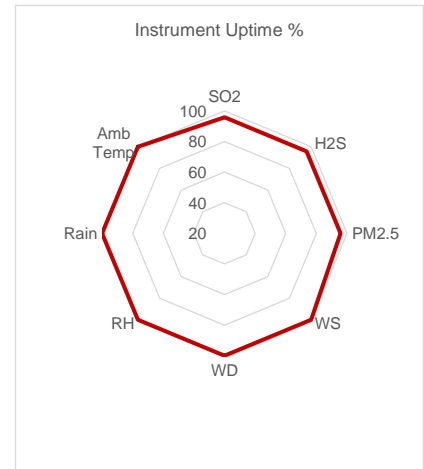
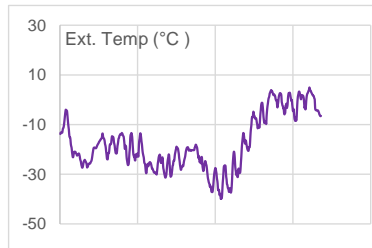
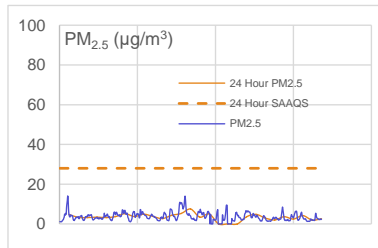
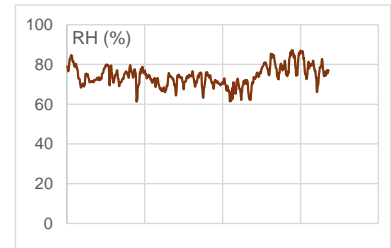
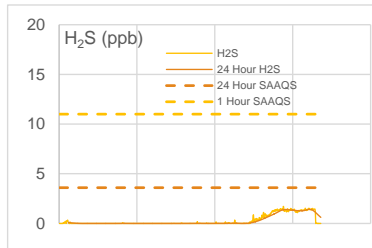
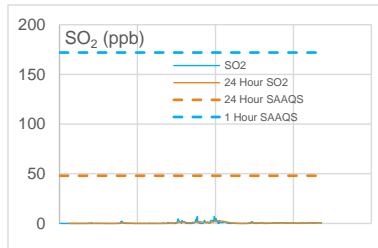




## SESAA Torquay Station - February 2025 Summary Report

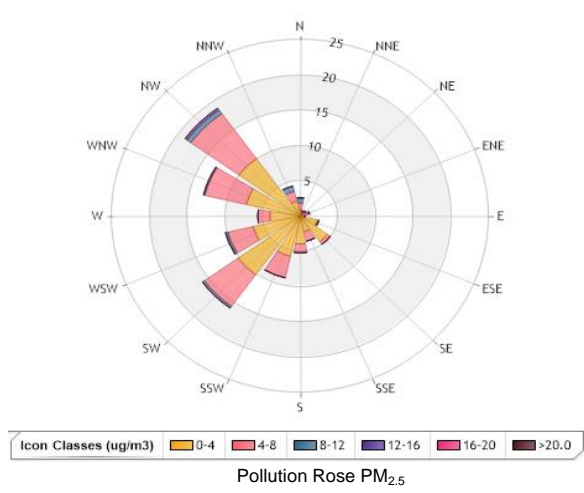
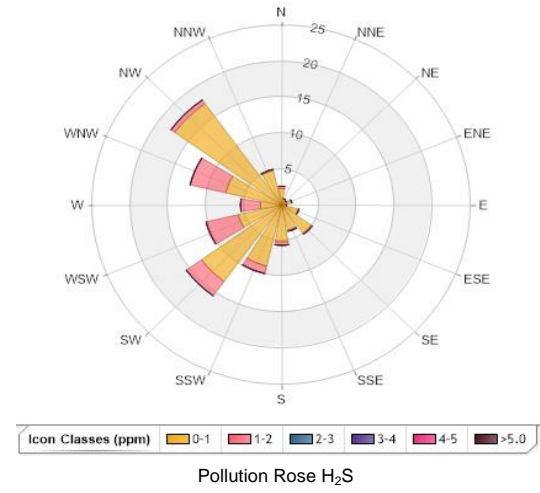
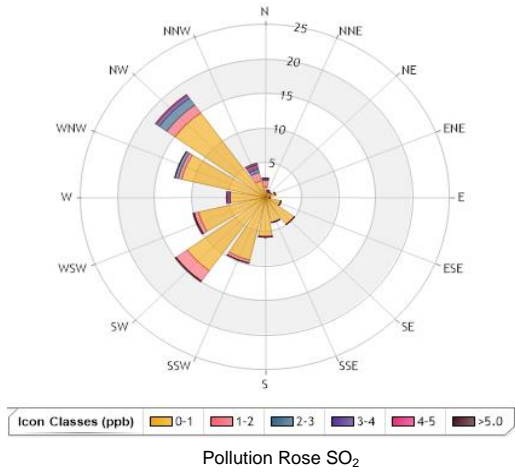
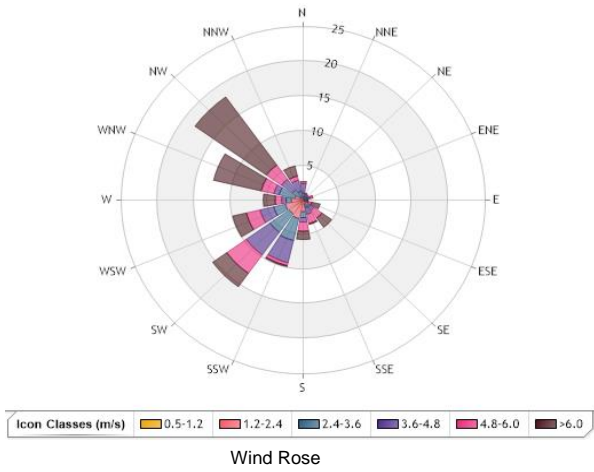
Pollutants		Month Records		24 Hour Records				1 Hour Records			
Name	Unit	Average Concentration	Uptime	Maximum		SAAQS Objective	Exceed Days	Maximum		SAAQS Objective	Exceed Hours
				Conc.	Date			Conc.	Date and Time		
SO <sub>2</sub>	ppb	0.5	95.8%	2.7	17-Feb	48	0	7.1	2/17/2025 1:00 PM	172	0
H <sub>2</sub> S	ppb	0.3	95.8%	1.4	27-Feb	3.6	0	1.7	2/25/2025 12:00 AM	11	0
PM <sub>2.5</sub>	µg/m <sup>3</sup>	3.8	95.8%	7.5	14-Feb	28	0	14.1	2/1/2025 9:00 PM	-	-

SAAQS: Saskatchewan Ambient Air Quality Standards



Exceedance Summary								
24-hour Exceedance Information			Summary of other Parameters during Exceedance					
Pollutant	Date	Conc.	WS	WD	Precip.	SO <sub>2</sub>	H <sub>2</sub> S	PM <sub>2.5</sub>

# SESAA Torquay Station - February 2025 Summary Report



Parameters	Unit	Color Code for Wind Speed and Pollutant Concentration Class						
Wind Speed	m/s	0.5 -W- 1.2	1.2 -W- 2.4	2.4 -W- 3.6	3.6 -W- 4.8	4.8 -W- 6.0	W > 6.0	
SO <sub>2</sub>	ppb	0.0-C-1.0	1.0-C-2.0	2.0-C-3.0	3.0-C-4.0	4.0-C-5.0	C > 5.0	
H <sub>2</sub> S	ppb	0.0-C-1.0	1.0-C-2.0	2.0-C-3.0	3.0-C-4.0	4.0-C-5.0	C > 5.0	
PM <sub>2.5</sub>	µg/m <sup>3</sup>	0.0-C-4.0	4.0-C-8.0	8.0-C-12.0	12.0-C-16.0	16.0-C-20.0	C > 20.0	

## Monthly Update

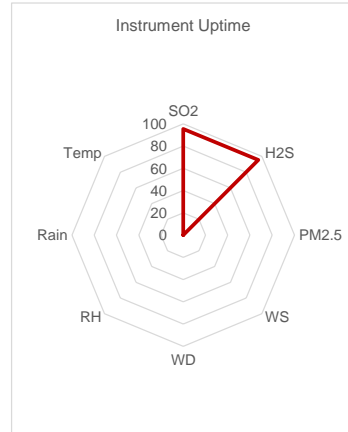
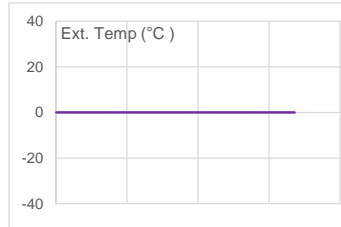
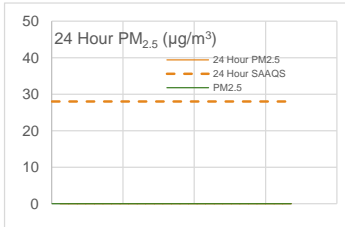
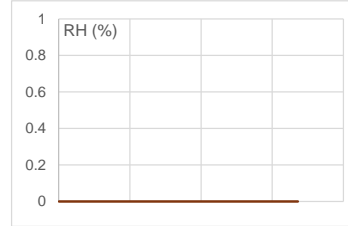
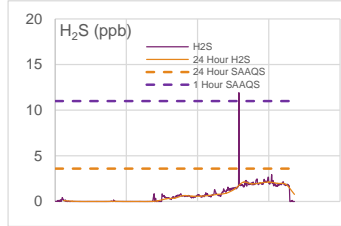
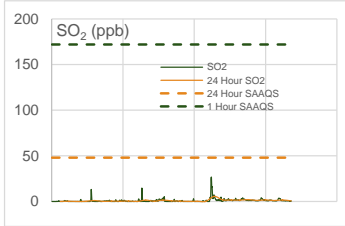
- \* All data has been zero drift and baseline corrected, if needed. Data may change after final validation process.
- \* All compliance parameters were within the Saskatchewan Ambient Air Quality Standards.
- \* All compliance parameters were more than 90% operational for the month.
- \* One hour of data were flagged for all gas analyzers due to daily IZS checks, resulting in the loss of one hour of data each day.
- \* H<sub>2</sub>S span failures were observed when ambient temperatures dropped to high negatives, suggesting that seasonal temperature may affect analyzer performance. The spans normalized as temperatures rose. Data during failures were flagged but not invalidated.



## SESAA Wauchope Station - February 2025 Summary Report

Pollutants		Month Records		24 Hour Records				1 Hour Records			
Name	Unit	Average Concentration	Uptime	Maximum		SAAQS Objective	Exceed Days	Maximum		SAAQS Objective	Exceed Hours
				Conc.	Date			Conc.	Date and Time		
SO <sub>2</sub>	ppb	0.9	95.4%	5.6	19-Feb	48	0	26.8	2/19/2025 4:00 PM	172	0
H <sub>2</sub> S	ppb	0.7	95.4%	2.1	25-Feb	3.6	0	11.92	2/22/2025 12:00 PM	11	1
PM <sub>2.5</sub>	µg/m <sup>3</sup>	No Data	0.0%	0.0	NA	28	0	No Data	NA	-	-

SAAQs: Saskatchewan Ambient Air Quality Standards



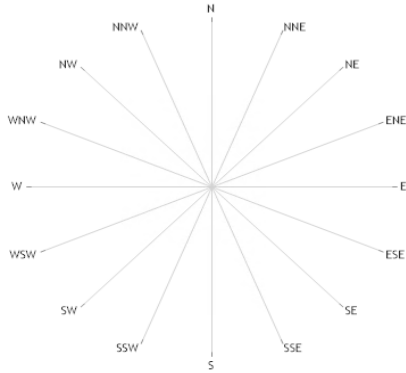
### Exceedance Summary (24-Hour Average)

24-hour Exceedance Information			Summary of other Parameters during Exceedance					
Pollutant	Date	Conc.	WS	WD	Precip.	SO <sub>2</sub>	H <sub>2</sub> S	PM <sub>2.5</sub>

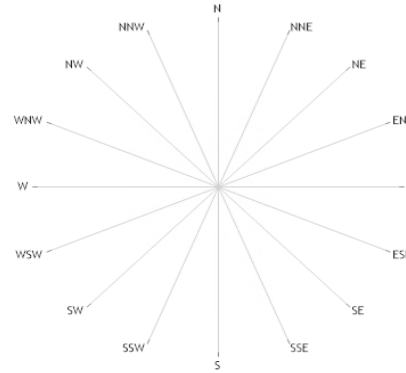
## SESAA Wauchope Station - February 2025 Summary Report

### Exceedance Summary (1-Hour Average)

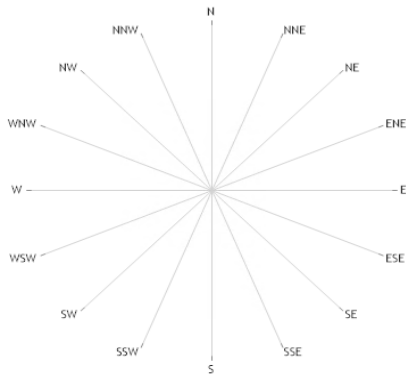
1-hour Exceedance Information				Summary of Other Parameters During Exceedance					
Pollutant	Date	Time	Conc.	WS	WD	Precip.	SO <sub>2</sub>	H <sub>2</sub> S	PM <sub>2.5</sub>
H <sub>2</sub> S	22-Feb	12:00 PM	11.9	No Data	No Data	No Data	3.6	11.9	No Data



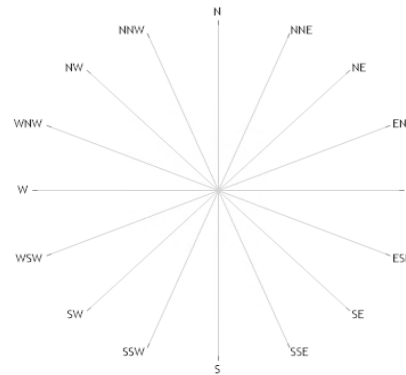
Wind Rose



Pollution Rose SO<sub>2</sub>



Pollution Rose H<sub>2</sub>S



Pollution Rose PM<sub>2.5</sub>

Parameters	Unit	Color Code for Wind Speed and Pollutant Concentration Class							
Wind Speed	m/s	N/A	N/A	N/A	N/A	N/A	N/A	N/A	N/A
SO <sub>2</sub>	ppb	N/A	N/A	N/A	N/A	N/A	N/A	N/A	N/A
H <sub>2</sub> S	ppb	N/A	N/A	N/A	N/A	N/A	N/A	N/A	N/A
PM <sub>2.5</sub>	µg/m <sup>3</sup>	N/A	N/A	N/A	N/A	N/A	N/A	N/A	N/A

### Monthly Update

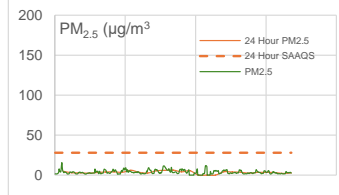
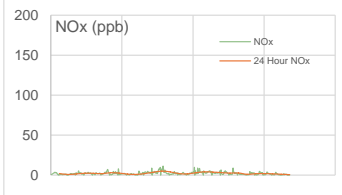
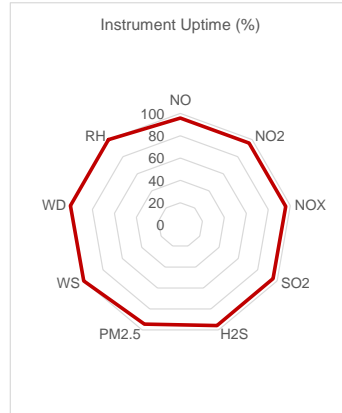
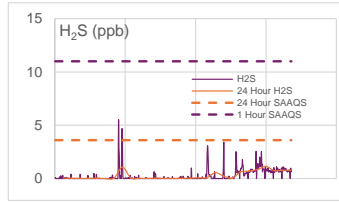
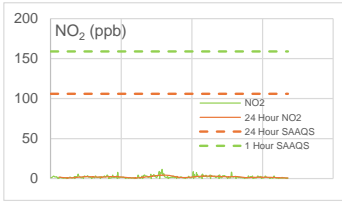
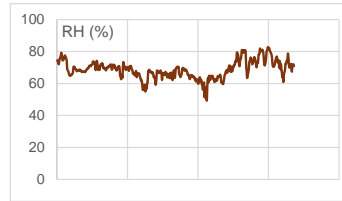
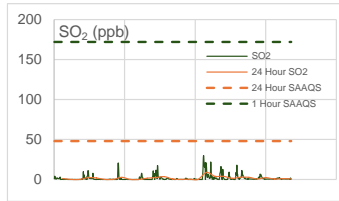
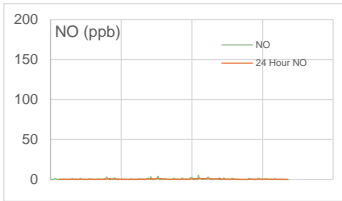
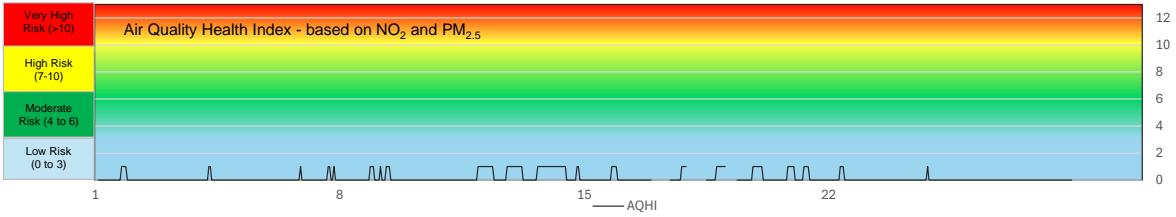
- \* All data has been zero baseline corrected, if any. Data may change after final validation process.
- \* All compliance parameters were within the Saskatchewan Ambient Air Quality Standards with the exception of an H<sub>2</sub>S hourly exceedance on February 22, 2025.
- \* All compliance parameters were more than 90% operational for the month with the exception of PM<sub>2.5</sub>.
- \* A total of 672 hours of data flagged as "analyzer failure" for WS/WD, resulting in missing data.
- \* A total of 672 hours of data flagged as "analyzer failure" for PM<sub>2.5</sub>, resulting in missing data.
- \* One hour of data were flagged for all gas analyzers due to daily IZS checks, resulting in the loss of one hour of data each day.
- \* H<sub>2</sub>S and SO<sub>2</sub> span failures were observed when external temperatures dropped to high negatives, suggesting that seasonal temperature may affect analyzer performance. The spans normalized as temperatures rose. Data during failures were flagged but not invalidated.
- \* Temperature fluctuations were observed in the shelter during the reporting period due to a heater failure. While these fluctuations led to data being flagged, the SO<sub>2</sub> and H<sub>2</sub>S data remained valid. However, data from the PM<sub>2.5</sub> monitor was invalidated due to a pump failure.



# SESAA Weyburn Station - February 2025 Summary Report

Pollutants		Month Records		24 Hour Records				1 Hour Records			
Name	Unit	Average Concentration	Uptime	Maximum		SAAQS Objective	Exceed Days	Maximum		SAAQS Objective	Exceed Hours
				Conc.	Date			Conc.	Date and Time		
NO	ppb	0.4	95.8%	1.1	18-Feb	-	-	5.5	2/18/2025 10:00 AM	-	-
NO <sub>2</sub>	ppb	2.0	95.8%	4.2	13-Feb	106	0	11.5	2/14/2025 4:00 AM	159	0
NO <sub>x</sub>	ppb	2.3	95.8%	5.0	13-Feb	-	-	11.3	2/14/2025 4:00 AM	-	-
SO <sub>2</sub>	ppb	1.6	95.8%	8.8	18-Feb	48	0	29.9	2/18/2025 4:00 PM	172	0
H <sub>2</sub> S	ppb	0.3	95.8%	1.1	25-Feb	3.6	0	5.5	2/8/2025 1:00 PM	11	0
PM <sub>2.5</sub>	µg/m <sup>3</sup>	3.9	94.4%	6.3	14-Feb	28	0	15.7	2/1/2025 8:00 PM	-	-

SAAQS: Saskatchewan Ambient Air Quality Standards



# SESAA Weyburn Station - February 2025 Summary Report

## Exceedance Summary (24-Hours Average)

24-hours Exceedance Information			Summary of other Parameters during Exceedance							
Pollutant	Date	Conc.	WS	WD	H <sub>2</sub> S	NO	NO <sub>2</sub>	NO <sub>x</sub>	SO <sub>2</sub>	PM <sub>2.5</sub>

## Exceedance Summary (1-Hour Average)

1-hour Exceedance Information				Summary of Other Parameters During Exceedance					
Pollutant	Date	Time	Conc.	WS	WD	Precip.	SO <sub>2</sub>	NO <sub>2</sub>	PM <sub>2.5</sub>



Parameters	Unit	Color Code for Wind Speed and Pollutant Concentration Class						
Wind Speed	m/s	0.5 -W- 1.2	1.2 -W- 2.4	2.4 -W- 3.6	3.6 -W- 4.8	4.8 -W- 6.0	W > 6.0	
NO <sub>2</sub>	ppb	0.0-C-2.0	2.0-C-4.0	4.0-C-6.0	6.0-C-8.0	8.0-C-10.0	C > 10.0	
SO <sub>2</sub>	ppb	0.0-C-2.0	2.0-C-4.0	4.0-C-6.0	6.0-C-8.0	8.0-C-10.0	C > 10.0	
H <sub>2</sub> S	ppb	0.0-C-2.0	2.0-C-4.0	4.0-C-6.0	6.0-C-8.0	8.0-C-10.0	C > 10.0	
PM <sub>2.5</sub>	µg/m <sup>3</sup>	0.0-C-3.0	3.0-C-6.0	6.0-C-9.0	9.0-C-12.0	12.0-C-15.0	C > 15.0	

### Monthly Update

- \* All data has been zero drift and baseline corrected, if needed. Data may change after final validation process.
  - \* All compliance parameters were within the Saskatchewan Ambient Air Quality Standards.
  - \* All compliance parameters were more than 90% operational for the month.
  - \* One hour of data were flagged for all gas analyzers due to daily IZS checks, resulting in the loss of one hour of data each day.
  - \* H<sub>2</sub>S span failures were intermittently observed during periods with extreme cold, indicating that seasonal ambient temperature fluctuations appear to be affecting analyzer performance. As temperatures returned to positive ranges, spans normalized. Data recorded during these failures were flagged but not invalidated.
- Daily span checks were not included in the data validation process as it is suspected the SO<sub>2</sub> permeation tube requires replacing.

