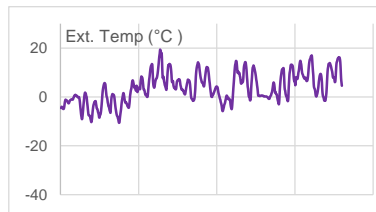
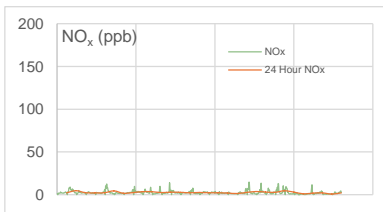
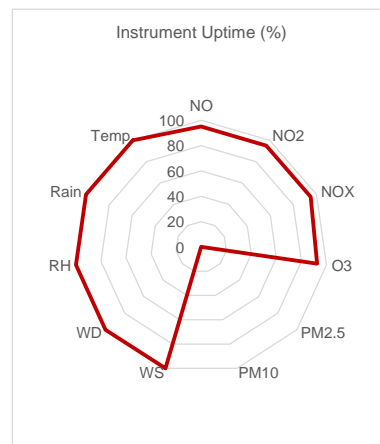
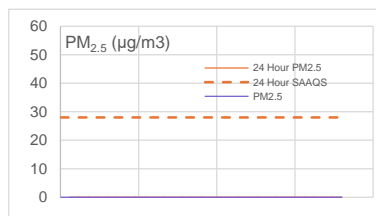
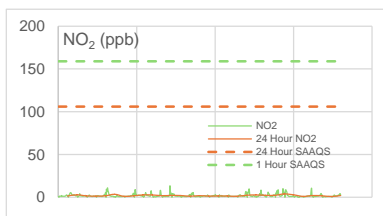
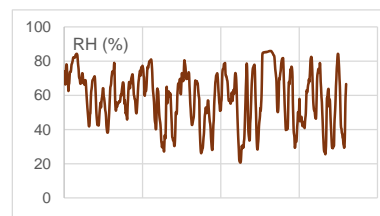
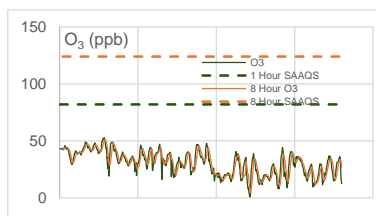
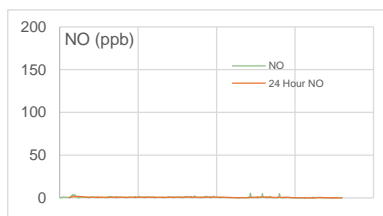
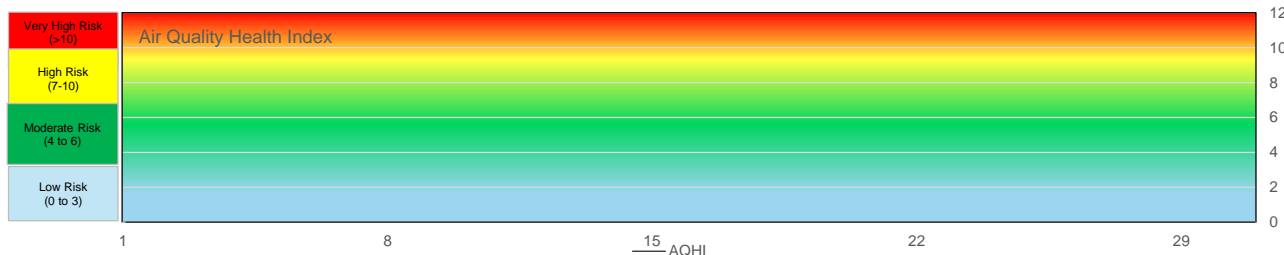


SESAA Esterhazy Station - April 2025 Summary Report

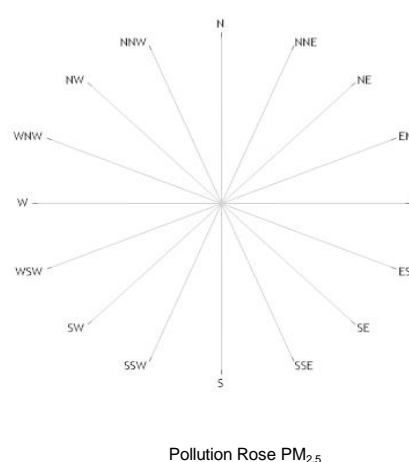
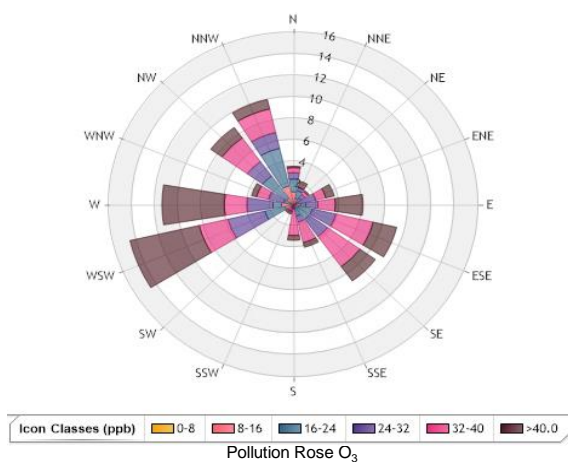
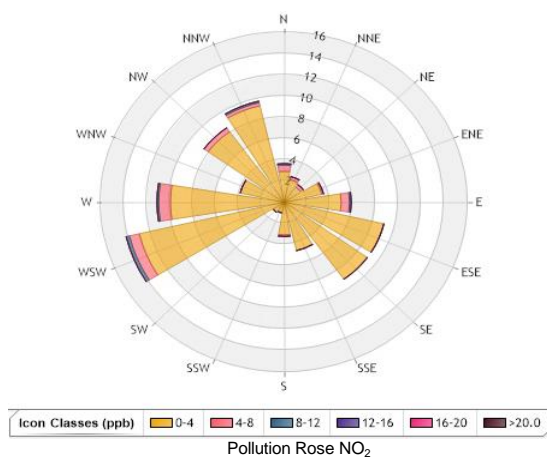
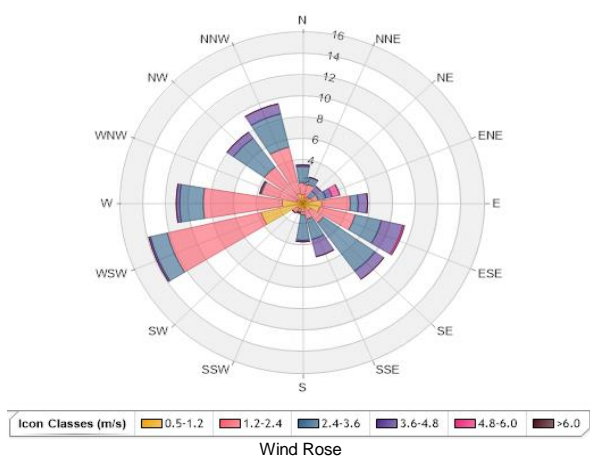
Pollutant		Month Records		24 Hour Records				1 Hour Records			
Name	Unit	Average Concentration	Uptime	Maximum		SAAQS*	Exceedance Days	Maximum		SAAQS*	Exceed Hours
				Conc.	Date			Concentration	Date and Time		
NO	ppb	0.6	95.1%	1.8	4/2/2025	-	-	5.5	4/21/2025 6:00 AM	-	-
NO ₂	ppb	2	95.1%	3.9	4/24/2025	106	0	13.4	4/12/2025 9:00 PM	159	0
NO _x	ppb	2.6	95.1%	4.7	4/2/2025	-	-	14.7	4/21/2025 6:00 AM	-	-
O ₃	ppb	30.8	92.5%	51.3	4/5/2025	124 (8-Hour)	0	52.7	4/5/2025 6:00 PM	82	0
PM _{2.5}	µg/m ³	No Data	0.0%	0.0	-	28	0	No Data	0	-	-

SAAQS: Saskatchewan Ambient Air Quality Standards



Exceedance Summary										
24-hour Exceedance Information			Summary of other Parameters during Exceedance							
Pollutant	Date	Conc.	WS	WD	Precip.	NO	NO ₂	NO _x	O ₃	PM _{2.5}

SESAA Esterhazy Station - April 2025 Summary Report



Parameters	Unit	Color Code for Wind Speed and Pollutant Concentration Class						
Wind Speed	m/s	0.5-W-1.2	1.2-W-2.4	2.4-W-3.6	3.6-W-4.8	4.8-W-6.0	W > 6.0	
NO ₂	ppb	0.0-C-4.0	4.0-C-8.0	8.0-C-12.0	12.0-C-16.0	16.0-C-20.0	C > 20.0	
O ₃	ppb	0.0-C-8.0	8.0-C-16.0	16.0-C-24.0	24.0-C-32.0	32.0-C-40.0	C > 40.0	
PM _{2.5}	µg/m ³	N/A	N/A	N/A	N/A	N/A	N/A	

* All data has been zero drift and baseline corrected, if needed. Data may change after final validation process.

* All compliance parameters were within the Saskatchewan Ambient Air Quality Standards.

* All compliance parameters were more than 90% operational for the month with the exception of PM_{2.5} monitor.

* A total of 720 hours of data flagged for PM_{2.5} due to an internal pump issue. Monitor removed March 21, 2025 and sent for repair.

* One hour of data was flagged for all gas analyzers due to daily IZS checks, resulting in the loss of one hour of data each day.

* Intermittent shelter temperature fluctuations were observed in the shelter during the reporting period. While these fluctuations prompted the data to be flagged, they did not affect the integrity of the data, and thus, the data was not invalidated.

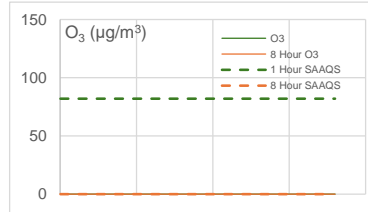
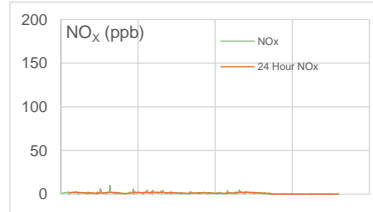
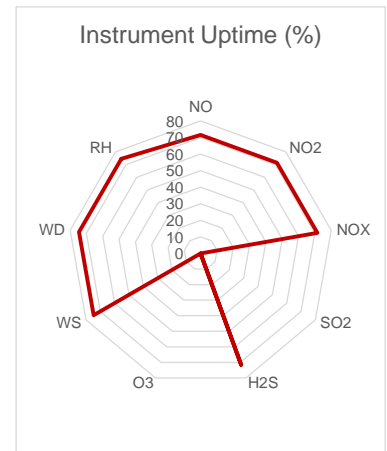
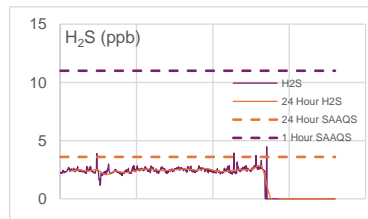
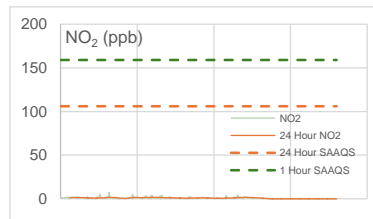
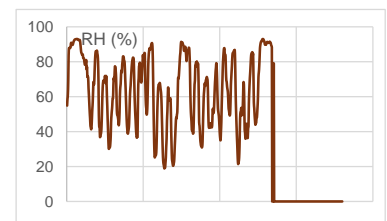
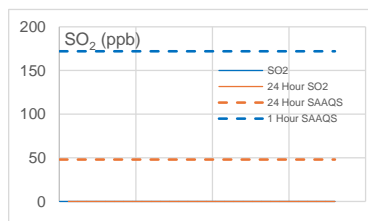
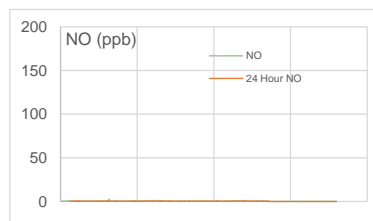
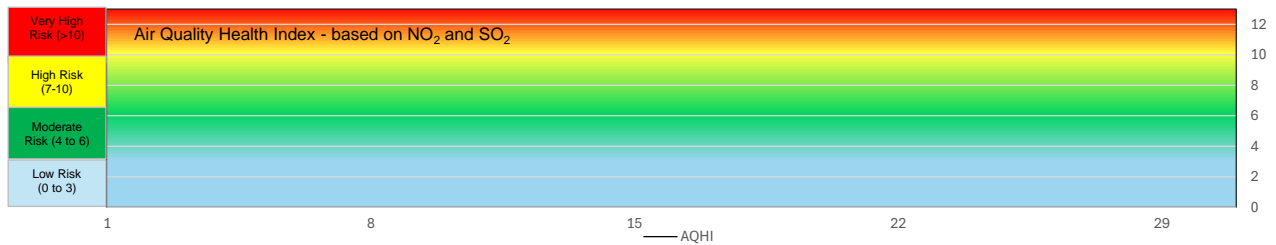
* Quarterly calibrations were completed on April 26, 2025.



SESAA Glen Ewen Station - April 2025 Summary Report

Pollutants		Month Records		24 Hour Records				1 Hour Records			
Name	Unit	Average Concentration	Uptime	Maximum		SAAQS*	Exceedance Days	Maximum		SAAQS*	Exceed Hours
				Conc.	Date			Conc.	Date and Time		
NO	ppb	0.4	71.5%	0.54	4/20/2025	-	-	2.7	4/6/2025 7:00 AM	-	-
NO ₂	ppb	1.1	71.5%	1.68	4/10/2025	106	0	7.3	4/6/2025 7:00 AM	159	0
NO _x	ppb	1.5	71.5%	2.23	4/20/2025	-	-	10	4/6/2025 7:00 AM	-	-
SO ₂	ppb	No Data	0.0%	0.00	-	48	0	No Data	0	172	0
H ₂ S	ppb	2.5	71.5%	2.76	4/22/2025	3.6	0	4.5	4/23/2025 1:00 PM	11	0
O ₃	ppb	No Data	0.0%	0.00	-	124 (8 hours)	0	No Data	0	82	0

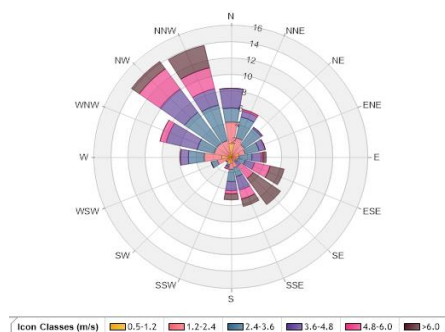
SAAQS: Saskatchewan Ambient Air Quality Standards



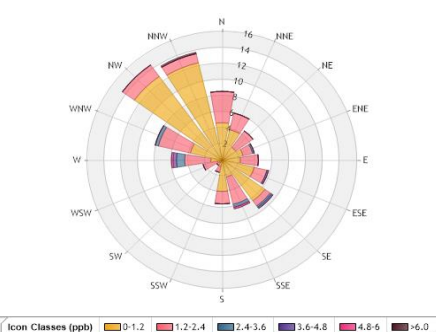
SESAA Glen Ewen Station - April 2025 Summary Report

Exceedance Summary

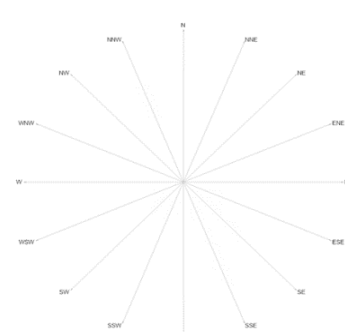
24-hour Exceedance Information			Summary of other Parameters during Exceedance							
Pollutant	Date	Conc.	WS	WD	H ₂ S	NO	NO ₂	NO _x	SO ₂	O ₃



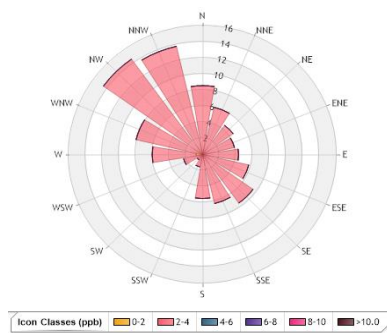
Wind Rose



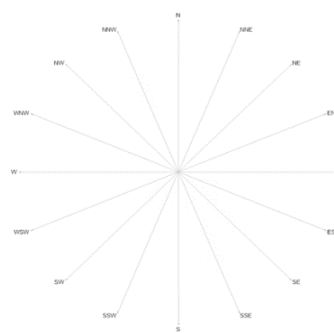
NO₂ Pollution Rose



SO₂ Pollution Rose



H₂S Pollution Rose



O₃ Pollution Rose

Parameters	Unit	Color Code for Wind Speed and Pollutant Conc. Class						
Wind Speed	m/s	0.5 -W- 1.2	1.2 -W- 2.4	2.4 -W- 3.6	3.6 -W- 4.8	4.8 -W- 6.0	W > 6.0	
NO ₂	ppb	0.0-C- 1.2	1.2 -C- 2.4	2.4 -C- 3.6	3.6 -C- 4.8	4.8 -C- 6.0	C > 6.0	
SO ₂	ppb	NA	NA	NA	NA	NA	NA	
H ₂ S	ppb	0.0-C-2.0	2.0-C-4.0	4.0-C-6.0	6.0-C-8.0	8.0-C-10.0	C > 10.0	
O ₃	ppb	NA	NA	NA	NA	NA	NA	

Monthly Update

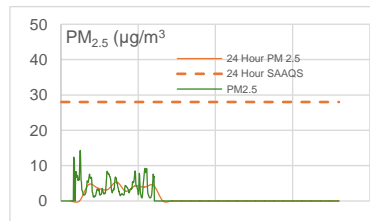
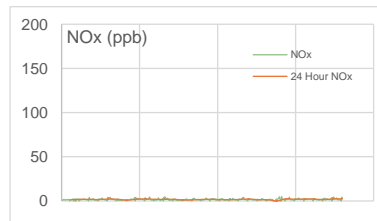
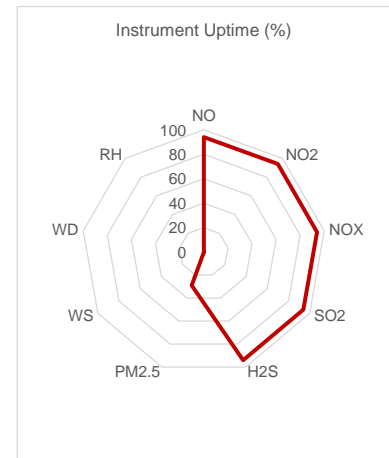
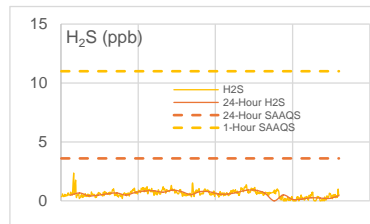
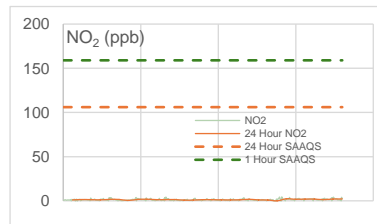
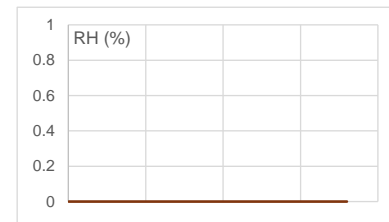
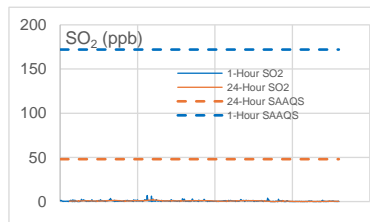
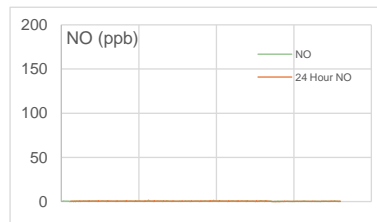
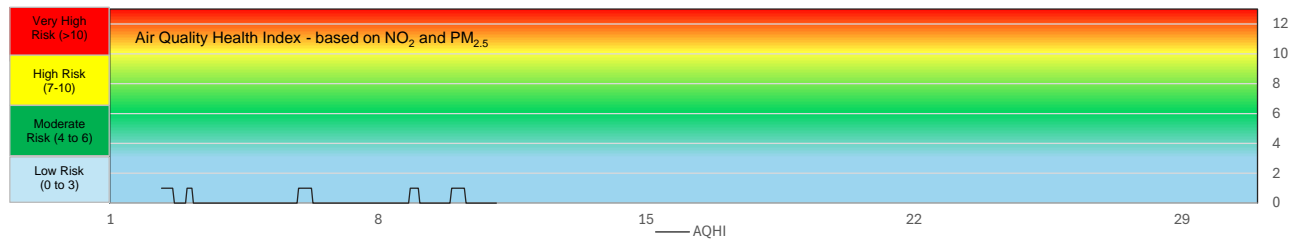
- * Data referenced is raw data that has not undergone the validation process due to internal span and zero inconsistencies for all analyzers.
- * Modem reinstalled on April 23, 2025 however remote connection to the station was still not operating properly.
- * SO₂ and O₃ analyzers were not operational in April due to a pump error.



SESAA Oxbow Station - April 2025 Summary Report

Pollutants		Month Records		24 Hour Records				1 Hour Records			
Name	Unit	Average Concentration	Uptime	Maximum		SAAQS*	Exceedance Days	Maximum		SAAQS*	Exceed Hours
				Conc.	Date			Conc.	Date and Time		
NO	ppb	0.4	94.0%	0.6	4/10/2025	-	-	1.7	4/10/2025 9:00 AM	-	-
NO ₂	ppb	1.4	94.0%	2.3	4/24/2025	106	0	4.5	4/24/2025 12:00 PM	159	0
NO _x	ppb	1.8	94.0%	2.5	4/24/2025	-	-	5	4/24/2025 12:00 PM	-	-
SO ₂	ppb	0.7	94.0%	1.9	4/10/2025	48	0	6.9	4/10/2025 9:00 AM	172	0
H ₂ S	ppb	0.6	94.0%	0.9	4/12/2025	3.6	0	2.4	4/2/2025 9:00 AM	11	0
PM _{2.5}	µg/m ³	4.3	28.9%	5.4	4/6/2025	28	0	14.3	4/3/2025 2:00 AM	-	-

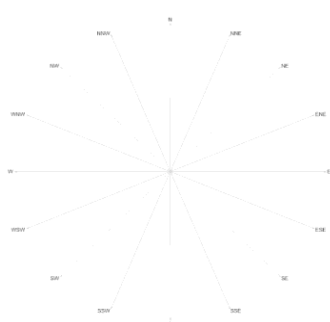
SAAQS: Saskatchewan Ambient Air Quality Standards



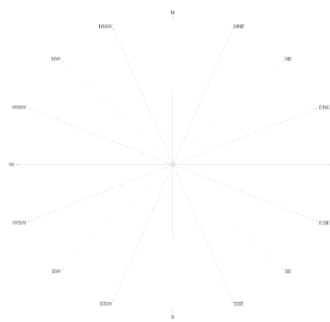
SESAA Oxbow Station - April 2025 Summary Report

Exceedance Summary

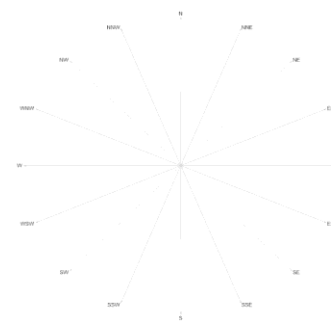
24-hour Exceedance Information			Summary of other Parameters during Exceedance							
Pollutant	Date	Conc.	WS	WD	H ₂ S	NO	NO ₂	NO _x	SO ₂	PM _{2.5}



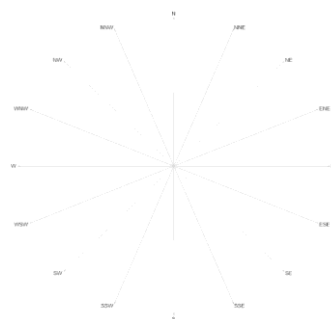
Wind Rose



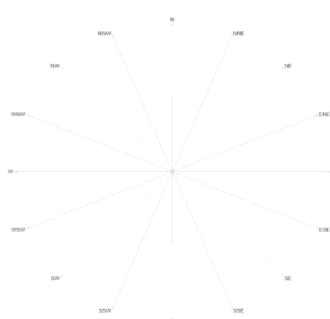
NO₂ Pollution Rose



SO₂ Pollution Rose



H₂S Pollution Rose



PM_{2.5} Pollution Rose

Parameters	Unit	Color Code for Wind Speed and Pollutant Concentration Class					
Wind Speed	m/s	N/A	N/A	N/A	N/A	N/A	N/A
NO ₂	ppb	N/A	N/A	N/A	N/A	N/A	N/A
SO ₂	ppb	N/A	N/A	N/A	N/A	N/A	N/A
H ₂ S	ppb	N/A	N/A	N/A	N/A	N/A	N/A
PM _{2.5}	µg/m ³	N/A	N/A	N/A	N/A	N/A	N/A

Monthly Update

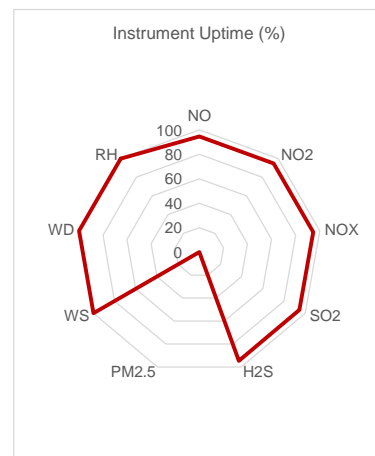
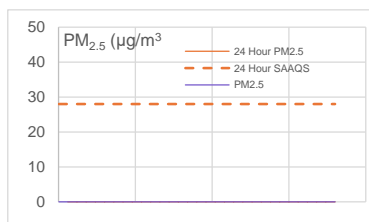
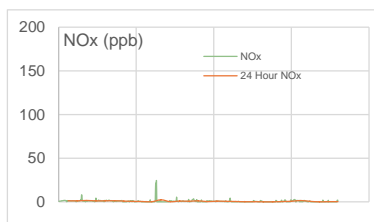
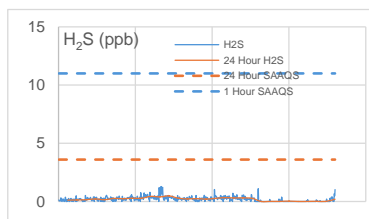
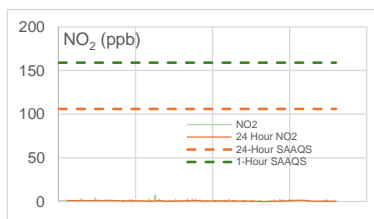
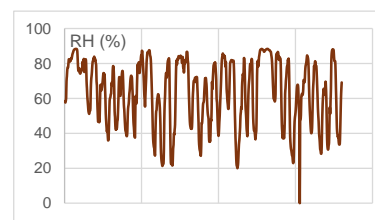
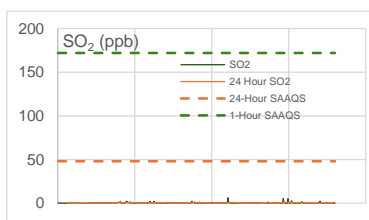
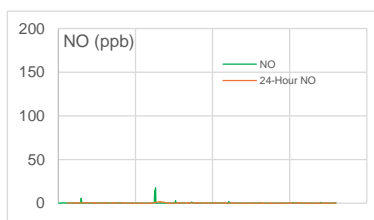
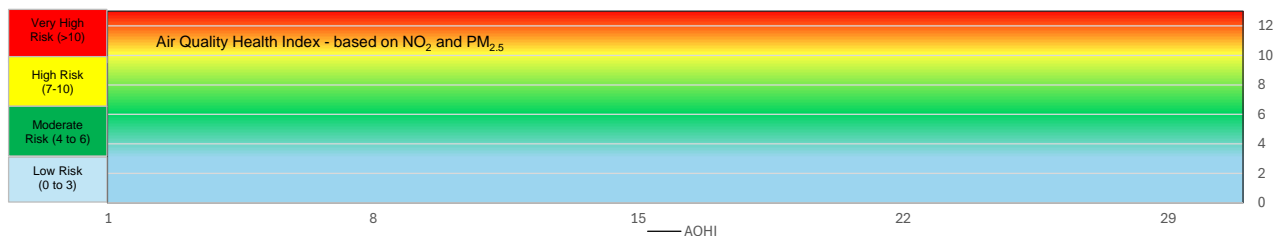
- * All data has been zero drift and baseline corrected, if needed. Data may change after final validation process.
- * All compliance parameters were within the Saskatchewan Ambient Air Quality Standards.
- * All compliance parameters were more than 90% operational for the month, except for PM_{2.5}
- * A total of 720 hours of wind speed (WS) and wind direction (WD) data were flagged as "analyzer failure," resulting in missing data. The sensor was removed for maintenance.
- * A total of 512 hours of PM_{2.5} data intermittent throughout the month were flagged as "analyzer malfunction," resulting in missing and flatlined data.
- * One hour of data were flagged for all gas analyzers due to daily IZS checks, resulting in the loss of one hour of data each day.
- * H₂S span failures were intermittently observed during the monitoring period, indicating that seasonal ambient temperature appear to be affecting analyzer performance. As temperatures returned to positive ranges, spans normalized. Data recorded during these failures were flagged but not invalidated.
- * Quarterly calibrations completed on April 23, 2025.



SESAA Stoughton Station - April 2025 Summary Report

Pollutants		Month Records		24 Hour Records				1 Hour Records			
Name	Unit	Average Concentration	Uptime	Maximum		SAAQS*	Exceedance Days	Maximum		SAAQS*	Exceed Hours
				Conc.	Date			Conc.	Date and Time		
NO	ppb	0.1	94.6%	1.5	4/11/2025	-	-	17.5	4/11/2025 12:00 PM	-	-
NO ₂	ppb	0.7	94.6%	1.4	4/26/2025	106	0	7.2	4/11/2025 10:00 AM	159	0
NO _x	ppb	0.7	94.6%	2.3	4/11/2025	-	-	24.5	4/11/2025 12:00 PM	-	-
SO ₂	ppb	0.3	94.6%	0.8	4/25/2025	48	0	6.2	4/19/2025 10:00 AM	172	0
H ₂ S	ppb	0.2	94.6%	0.5	4/12/2025	3.6	0	1.3	4/12/2025 3:00 AM	11	0
PM _{2.5}	µg/m ³	No Data	0.0%	0.0	-	28	0	No Data	-	-	-

SAAQS: Saskatchewan Ambient Air Quality Standards



SESAA Stoughton Station - April 2025 Summary Report

Exceedance Summary

24-hour Exceedance Information			Summary of other Parameters during Exceedance							
Pollutant	Date	Conc.	WS	WD	H ₂ S	NO	NO ₂	NO _x	SO ₂	PM _{2.5}



Parameters	Unit	Color Code for Wind Speed and Pollutant Concentration Class						
Wind Speed	m/s	0.5 -W- 1.2	1.2 -W- 2.4	2.4 -W- 3.6	3.6 -W- 4.8	4.8 -W- 6.0	W > 6.0	
NO ₂	ppb	0.0 -C- 1.2	1.2 -C- 2.4	2.4 -C- 3.6	3.6 -C- 4.8	4.8 -C- 6.0	C > 6.0	
SO ₂	ppb	0.0 -C- 1.2	1.2 -C- 2.4	2.4 -C- 3.6	3.6 -C- 4.8	4.8 -C- 6.0	C > 6.0	
H ₂ S	ppb	0.0-C-0.4	0.4-C-0.8	0.8-C-1.2	1.2-C-1.6	1.6-C-2.0	C > 2.0	
PM _{2.5}	µg/m ³	N/A	N/A	N/A	N/A	N/A	N/A	

Monthly Update

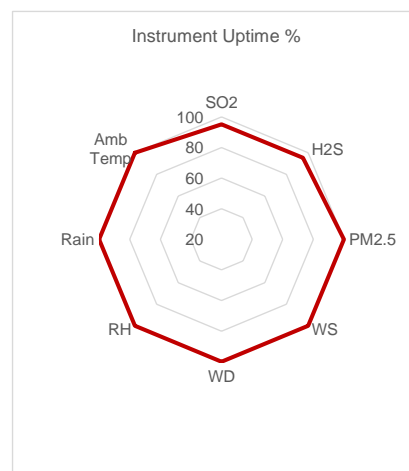
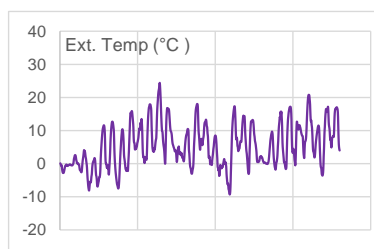
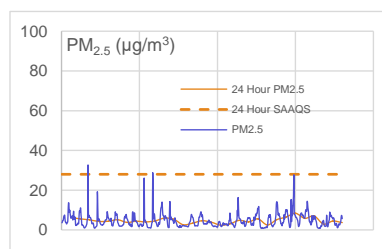
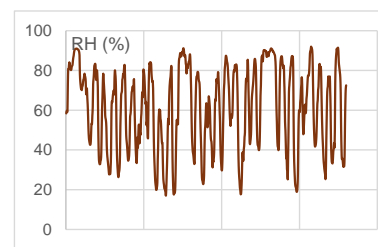
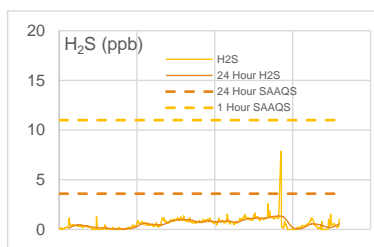
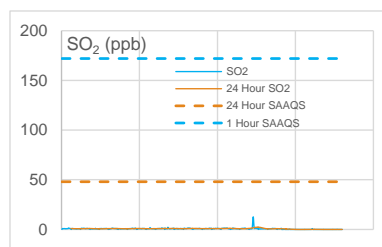
- * All data has been zero drift and baseline corrected, if needed. Data may change after final validation process.
- * All compliance parameters were within the Saskatchewan Ambient Air Quality Standards.
- * All compliance parameters were more than 90% operational for the month except for PM_{2.5}.
- * PM_{2.5} was removed from service in December 2024 for repair.
- * One hour of data were flagged for all gas analyzers due to daily IZS checks, resulting in the loss of one hour of data each day.
- * NO_x zero drift were observed intermittently, which were investigated and adjusted as per guidelines.
- * Quarterly calibrations were completed on April 22, 2025



SESAA Torquay Station - April 2025 Summary Report

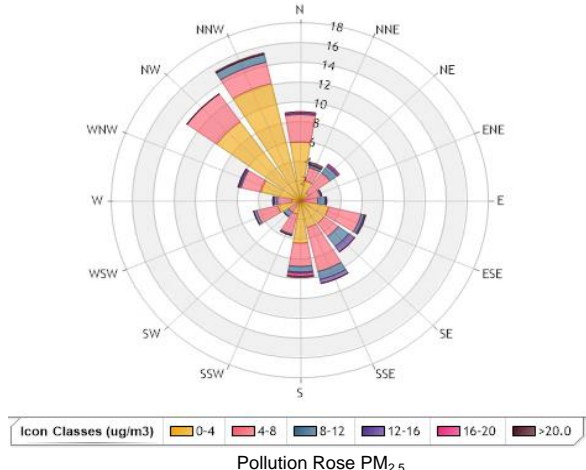
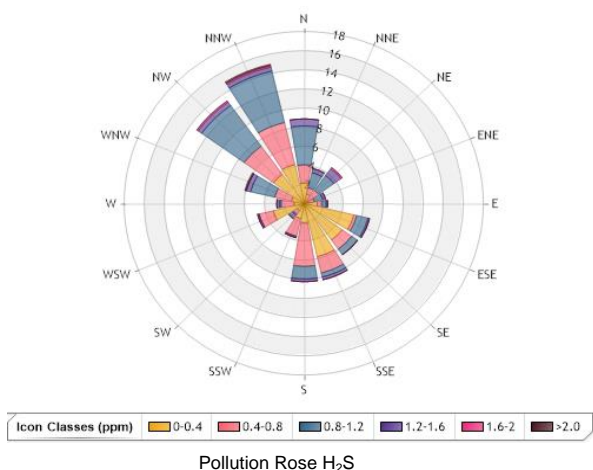
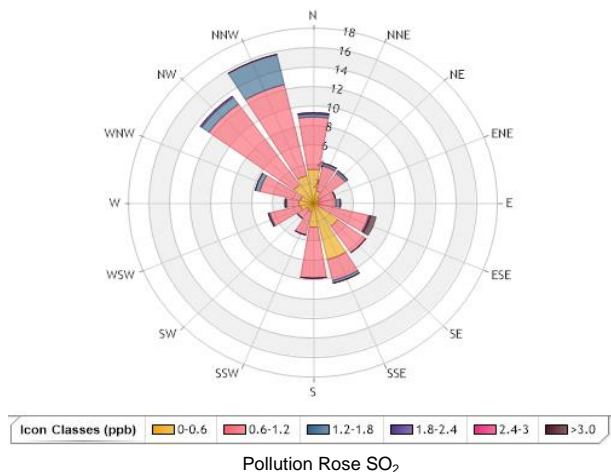
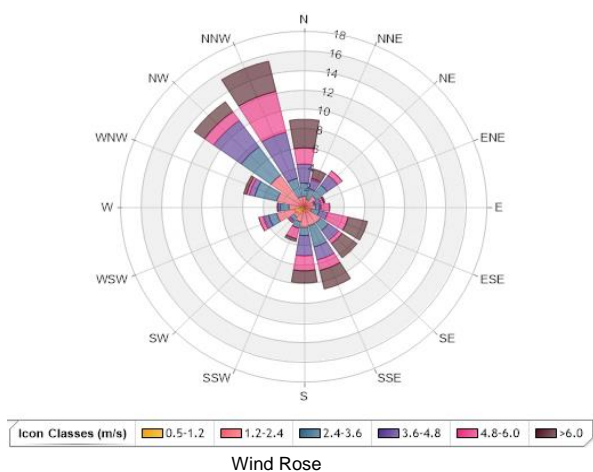
Pollutants		Month Records		24 Hour Records				1 Hour Records			
Name	Unit	Average Concentration	Uptime	Maximum		SAAQS*	Exceedance Days	Maximum		SAAQS*	Exceed Hours
				Conc.	Date			Conc.	Date and Time		
SO ₂	ppb	0.7	95.1%	2.3	4/21/2025	48	0	12.7	4/21/2025 12:00 PM	172	0
H ₂ S	ppb	0.6	95.3%	1.3	4/23/2025	3.6	0	7.9	4/24/2025 6:00 PM	11	0
PM _{2.5}	µg/m ³	4.7	100.0%	8.4	4/25/2025	28	0	32.7	4/3/2025 8:00 PM	-	-

SAAQS: Saskatchewan Ambient Air Quality Standards



Exceedance Summary								
24-hour Exceedance Information			Summary of other Parameters during Exceedance					
Pollutant	Date	Conc.	WS	WD	Precip.	SO ₂	H ₂ S	PM _{2.5}

SESAA Torquay Station - April 2025 Summary Report



Parameters	Unit	Color Code for Wind Speed and Pollutant Concentration Class						
Wind Speed	m/s	0.5 -W- 1.2	1.2 -W- 2.4	2.4 -W- 3.6	3.6 -W- 4.8	4.8 -W- 6.0	W > 6.0	
SO ₂	ppb	0.0-C-0.6	0.6-C-1.2	1.2-C-1.8	1.8-C-2.4	2.4-C-3.0	C > 3.0	
H ₂ S	ppb	0.0-C-0.4	0.4-C-0.8	0.8-C-1.2	1.2-C-1.6	1.6-C-2.0	C > 2.0	
PM _{2.5}	ug/m ³	0.0-C-4.0	4.0-C-8.0	8.0-C-12.0	12.0-C-16.0	16.0-C-20.0	C > 20.0	

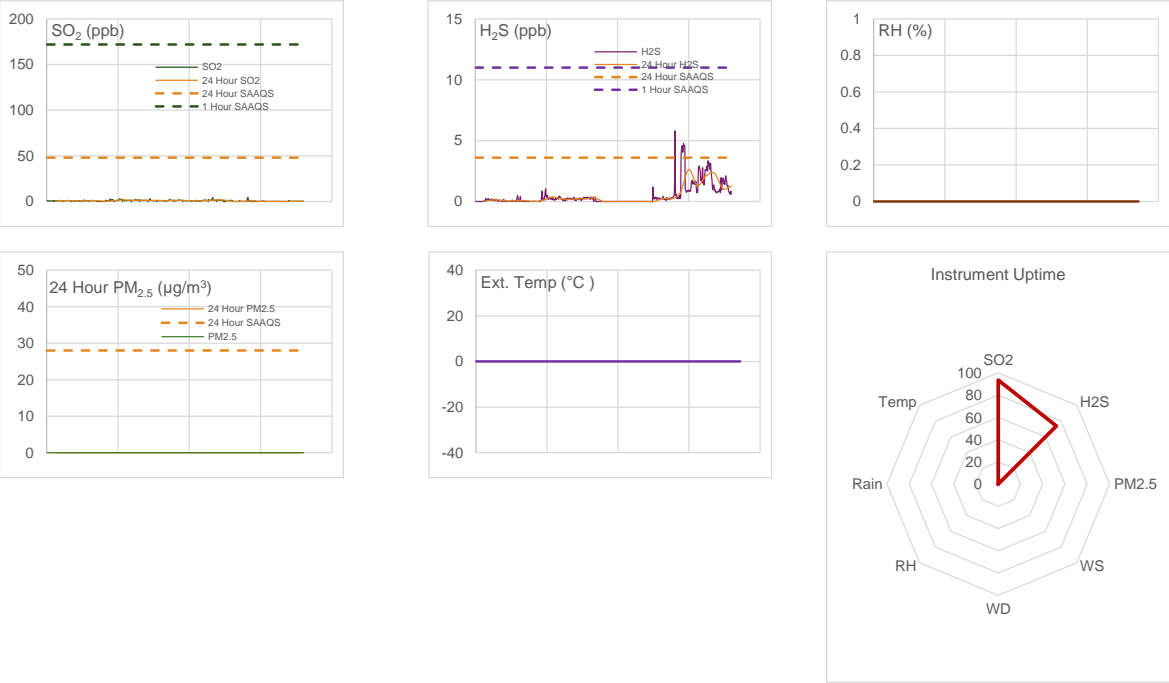
Monthly Update

- * All data has been zero drift and baseline corrected, if needed. Data may change after final validation process.
- * All compliance parameters were within the Saskatchewan Ambient Air Quality Standards.
- * All compliance parameters were more than 90% operational for the month.
- * One hour of data were flagged for all gas analyzers due to daily IZS checks, resulting in the loss of one hour of data each day.
- * H₂S span failures were intermittently observed when ambient temperatures fluctuates, suggesting that seasonal temperature may affect analyzer performance. The spans normalized as temperatures stabilize. Data during failures were flagged but not invalidated.
- * Quarterly calibrations were completed on April 24, 2025.



SESAA Wauchope Station - April 2025 Summary Report											
Pollutants		Month Records		24 Hour Records				1 Hour Records			
Name	Unit	Average Concentration	Uptime	Maximum		SAAQS*	Exceedance Days	Maximum		SAAQS*	Exceed Hours
				Conc.	Date			Conc.	Date and Time		
SO ₂	ppb	0.8	93.5%	1.7	4/9/2025	48	0	4.4	4/24/2025 12:00 PM	172	0
H ₂ S	ppb	0.6	73.9%	2.6	4/25/2025	3.6	0	5.81	4/24/2025 9:00 AM	11	0
PM _{2.5}	µg/m ³	No Data	0.0%	0.0	NA	28	0	No Data	NA	-	-

SAAQS: Saskatchewan Ambient Air Quality Standards

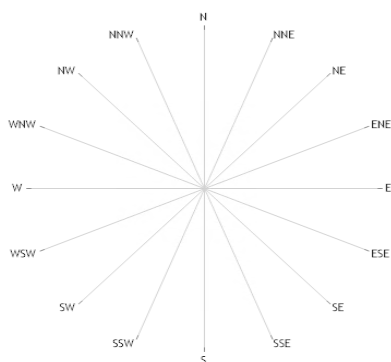


Exceedance Summary (24-Hour Average)								
24-hour Exceedance Information			Summary of other Parameters during Exceedance					
Pollutant	Date	Conc.	WS	WD	Precip.	SO ₂	H ₂ S	PM _{2.5}

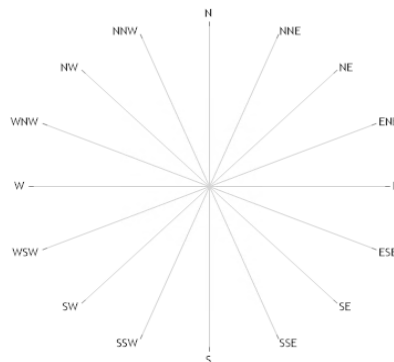
SESAA Wauchope Station - April 2025 Summary Report

Exceedance Summary (1-Hour Average)

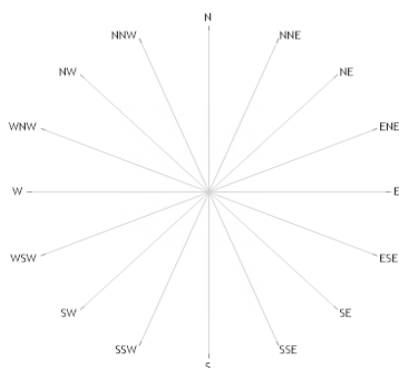
1-hour Exceedance Information				Summary of Other Parameters During Exceedance					
Pollutant	Date	Time	Conc.	WS	WD	Precip.	SO ₂	H ₂ S	PM _{2.5}



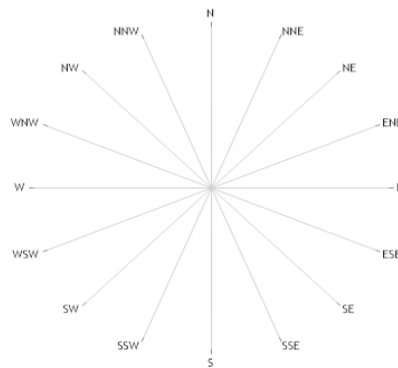
Wind Rose



Pollution Rose SO₂



Pollution Rose H₂S



Pollution Rose PM_{2.5}

Parameters	Unit	Color Code for Wind Speed and Pollutant Concentration Class					
Wind Speed	m/s	N/A	N/A	N/A	N/A	N/A	N/A
SO ₂	ppb	N/A	N/A	N/A	N/A	N/A	N/A
H ₂ S	ppb	N/A	N/A	N/A	N/A	N/A	N/A
PM _{2.5}	µg/m ³	N/A	N/A	N/A	N/A	N/A	N/A

Monthly Update

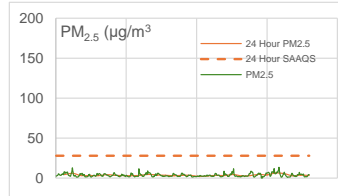
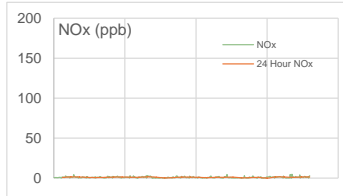
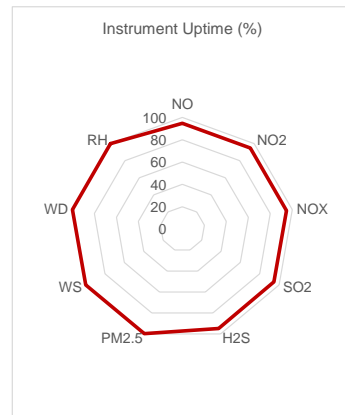
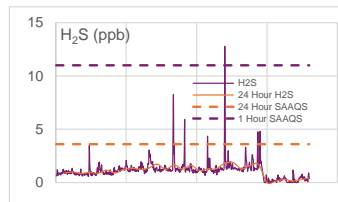
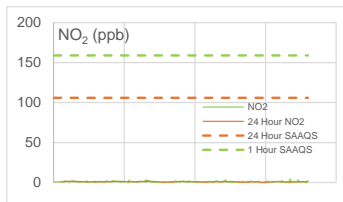
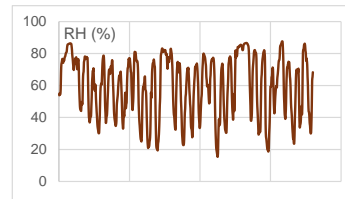
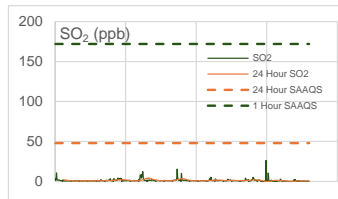
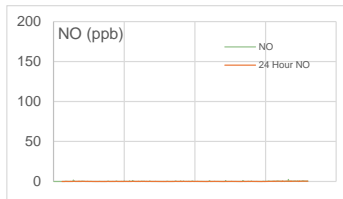
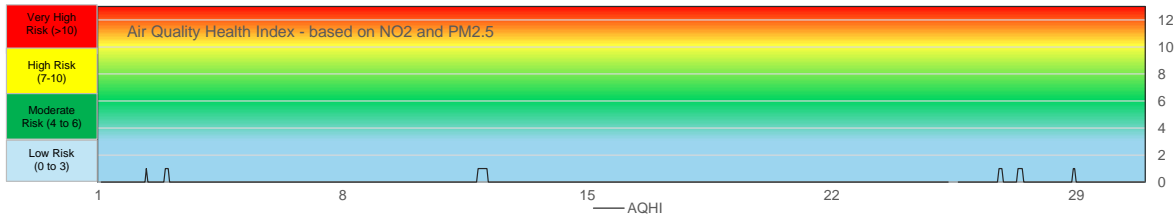
- * All data has been zero baseline corrected, if any. Data may change after final validation process.
- * All compliance parameters were within the Saskatchewan Ambient Air Quality Standards.
- * All compliance parameters were more than 90% operational for the month with the exception of PM_{2.5} and H₂S.
- * A total of 720 hours of data flagged as "analyzer failure" for WS/WD
- * A total of 720 hours of data flagged as "analyzer failure" for PM_{2.5}. The PM_{2.5} monitor data was invalidated due to a pump malfunction.
- * A total of 163 hours of data flagged as "analyzer failure" for H₂S due to pump flow issues.
- * One hour of data were flagged for all gas analyzers due to daily IZS checks, resulting in the loss of one hour of data each day.
- * H₂S span failures were intermittently observed when ambient temperatures fluctuates, suggesting that seasonal temperature may affect analyzer performance. The spans normalized as temperatures stabilize. Data during failures were flagged but not invalidated.
- * Temperature fluctuations were observed in the shelter during the reporting period due to a heater failure. While these fluctuations led to data being flagged, the SO₂ and H₂S data remained valid.



SESAA Weyburn Station - April 2025 Summary Report

Pollutants		Month Records		24 Hour Records				1 Hour Records			
Name	Unit	Average Concentration	Uptime	Maximum		SAAQS*	Exceedance Days	Maximum		SAAQS*	Exceed Hours
				Conc.	Date			Conc.	Date and Time		
NO	ppb	0.1	94.7%	0.4	4/30/2025	-	-	2.6	4/28/2025 5:00 PM	-	-
NO ₂	ppb	1.1	94.7%	1.6	4/11/2025	106	0	4.6	4/28/2025 10:00 PM	159	0
NO _x	ppb	1.1	94.7%	1.6	4/11/2025	-	-	4.9	4/28/2025 10:00 PM	-	-
SO ₂	ppb	1.4	94.7%	4.1	4/11/2025	48	0	26.4	4/25/2025 10:00 PM	172	0
H ₂ S	ppb	1.1	94.7%	1.9	4/21/2025	3.6	0	12.8	4/21/2025 12:00 AM	11	1
PM _{2.5}	µg/m ³	3.7	99.7%	6.4	4/26/2025	28	0	13.6	4/27/2025 10:00 AM	-	-

SAAQS: Saskatchewan Ambient Air Quality Standards



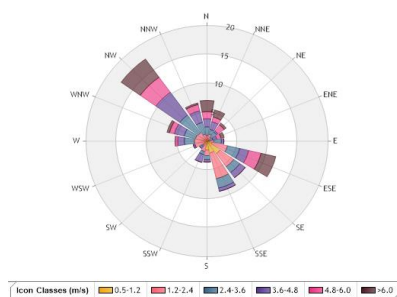
SESAA Weyburn Station - April 2025 Summary Report

Exceedance Summary (24-Hours Average)

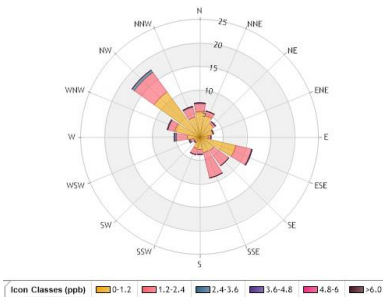
24-hours Exceedance Information			Summary of other Parameters during Exceedance							
Pollutant	Date	Conc.	WS	WD	H ₂ S	NO	NO ₂	NOx	SO ₂	PM _{2.5}

Exceedance Summary (1-Hour Average)

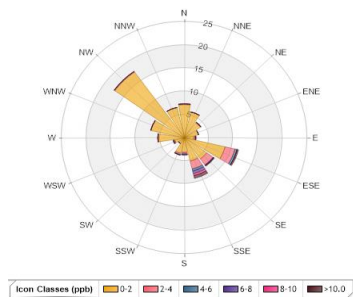
1-hour Exceedance Information				Summary of Other Parameters During Exceedance					
Pollutant	Date	Time	Conc.	WS	WD	Precip.	SO ₂	NO ₂	PM _{2.5}
H ₂ S	21-Apr	0:00	12.8	1.8	94.4	0.0	0.9	1.8	4.3



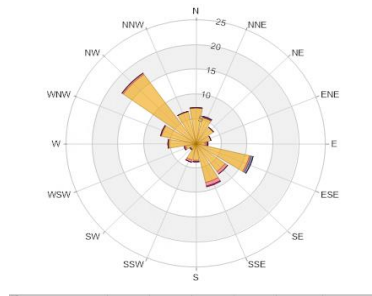
Wind Rose



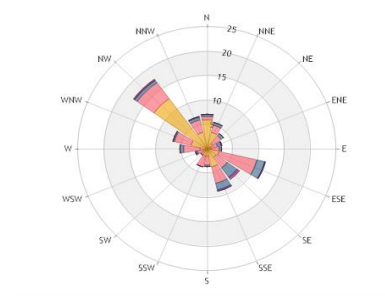
NO₂ Pollution Rose



SO₂ Pollution Rose



H₂S Pollution Rose



PM_{2.5} Pollution Rose

Parameters	Unit	Color Code for Wind Speed and Pollutant Concentration Class						
Wind Speed	m/s	0.5 -W- 1.2	1.2 -W- 2.4	2.4 -W- 3.6	3.6 -W- 4.8	4.8 -W- 6.0	W > 6.0	
NO ₂	ppb	0.0 -C- 1.2	1.2 -C- 2.4	2.4 -C- 3.6	3.6 -C- 4.8	4.8 -C- 6.0	C > 6.0	
SO ₂	ppb	0.0 -C- 2.0	2.0 -C- 4.0	4.0 -C- 6.0	6.0 -C- 8.0	8.0 -C- 10.0	C > 10.0	
H ₂ S	ppb	0.0 -C- 2.0	2.0 -C- 4.0	4.0 -C- 6.0	6.0 -C- 8.0	8.0 -C- 10.0	C > 10.0	
PM _{2.5}	µg/m ³	0.0 -C- 3.0	3.0 -C- 6.0	6.0 -C- 9.0	9.0 -C- 12.0	12.0 -C- 15.0	C > 15.0	

Monthly Update

- * All data has been zero drift and baseline corrected, if needed. Data may change after final validation process.
- * All compliance parameters were within the Saskatchewan Ambient Air Quality Standards with the exception of one hourly H₂S exceedance.
- * All compliance parameters were more than 90% operational for the month.
- * One hour of data were flagged for all gas analyzers due to daily IZS checks, resulting in the loss of one hour of data each day.
- * The SO₂ permeation tube was depleted, and as a result, daily span checks were not included in the data process.
- * Quarterly calibrations were completed on April 25, 2025.

