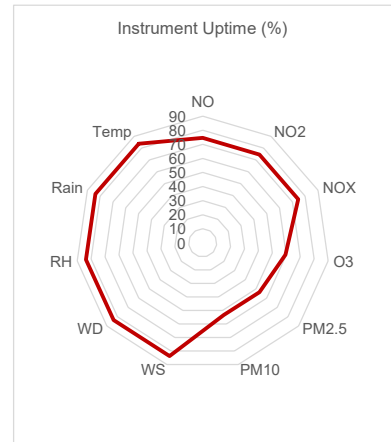
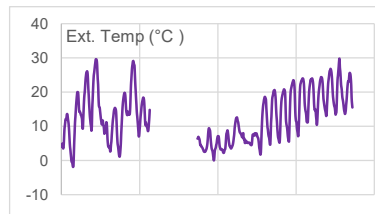
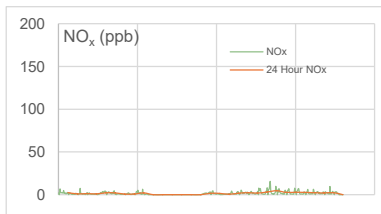
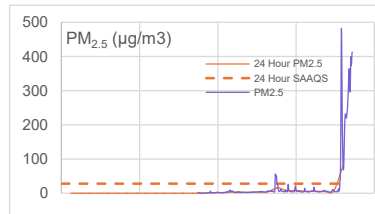
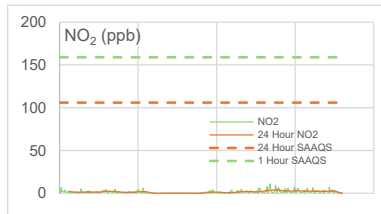
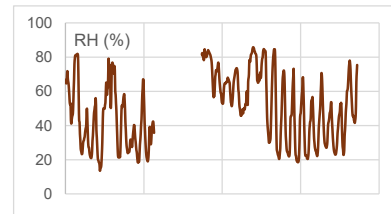
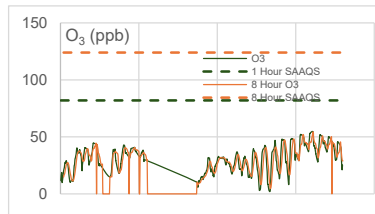
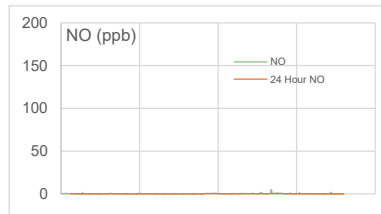
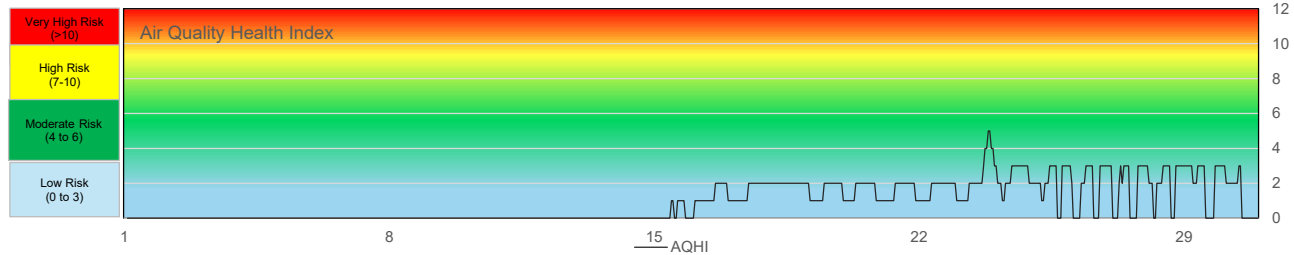


SESAA Esterhazy Station - May 2025 Summary Report

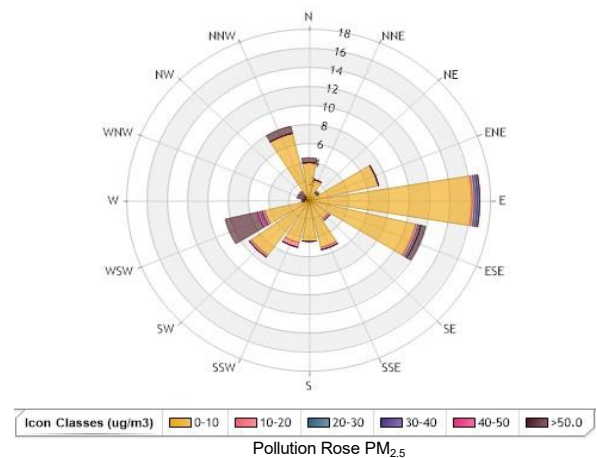
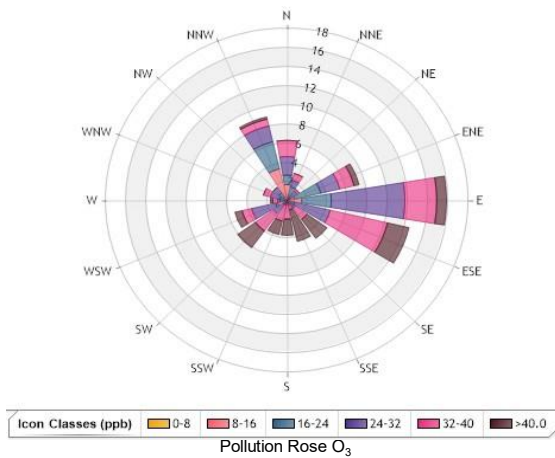
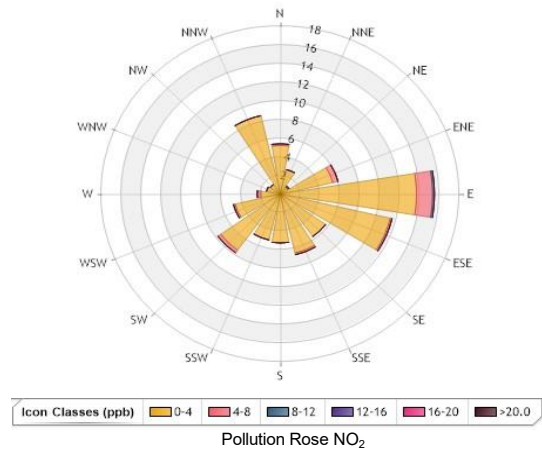
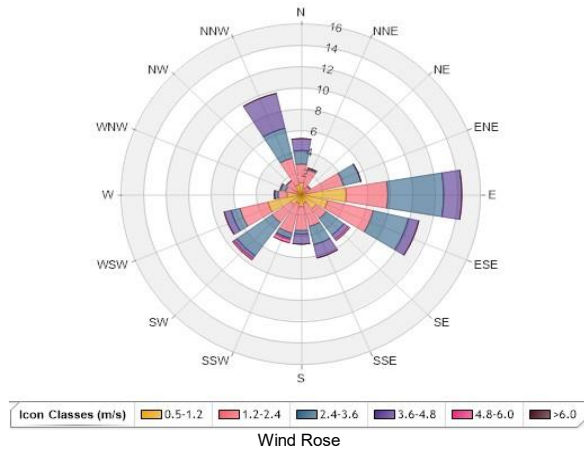
Pollutant		Month Records		24 Hour Records				1 Hour Records			
Name	Unit	Average Concentration	Uptime	Maximum		SAAQS*	Exceedance Days	Maximum		SAAQS*	Exceed Hours
				Conc.	Date			Concentration	Date and Time		
NO	ppb	0.2	74.6%	0.7	5/23/2025	-	-	5	5/23/2025 07:00	-	-
NO ₂	ppb	1.9	74.6%	3.9	5/23/2025	106	0	10.9	5/23/2025 08:00	159	0
NO _x	ppb	2	74.6%	4.6	5/23/2025	-	-	15.6	5/23/2025 08:00	-	-
O ₃	ppb	29.8	59.4%	54.4	5/27/2025	124 (8-Hour)	0	54.4	5/27/2025 20:00	82	0
PM _{2.5}	µg/m ³	26	53.4%	274.5	5/31/2025	28	2	481.6	5/30/2025 20:00	-	-

SAAQS: Saskatchewan Ambient Air Quality Standards



Exceedance Summary										
24-hour Exceedance Information			Summary of other Parameters during Exceedance							
Pollutant	Date	Conc.	WS	WD	Precip.	NO	NO ₂	NO _x	O ₃	PM _{2.5}
PM _{2.5}	30-May	80.3	2.1	235.9	0.0	<Samp	<Samp	<Samp	<Samp	80.3
PM _{2.5}	31-May	274.5	1.2	264.5	0.0	<Samp	<Samp	<Samp	<Samp	274.5

SESAA Esterhazy Station - May 2025 Summary Report



Parameters	Unit	Color Code for Wind Speed and Pollutant Concentration Class						
Wind Speed	m/s	0.5-W-1.2	1.2-W-2.4	2.4-W-3.6	3.6-W-4.8	4.8-W-6.0	W > 6.0	
NO ₂	ppb	0.0-C-4.0	4.0-C-8.0	8.0-C-12.0	12.0-C-16.0	16.0-C-20.0	C > 20.0	
O ₃	ppb	0.0-C-8.0	8.0-C-16.0	16.0-C-24.0	24.0-C-32.0	32.0-C-40.0	C > 40.0	
PM _{2.5}	µg/m ³	0.0-C-10.0	10.0-C-20.0	20.0-C-30.0	30.0-C-40.0	40.0-C-50.0	C > 50.0	

* All data has been zero drift and baseline corrected, if needed. Data may change after final validation process.

* All compliance parameters were within the Saskatchewan Ambient Air Quality Standards with the exception of two 24-hour PM_{2.5} exceedances due to smoke from regional wildfires.

* All compliance parameters were less than 90% operational for the month.

* A total of 121 hours of data lost for all analyzers due to airpointer shutdown due to high internal temperatures.

* A total of 44 hours of NO₂ data was flagged due to analyzer malfunction.

* A total of 152 hours of O₃ data was flagged due to analyzer malfunction.

* One hour of data was flagged for all gas analyzers due to daily IZS checks, resulting in the loss of one hour of data each day.

* Intermittent shelter temperature fluctuations were observed in the shelter during the reporting period which affect the data integrity, and thus, the data provided here for reference purposes.

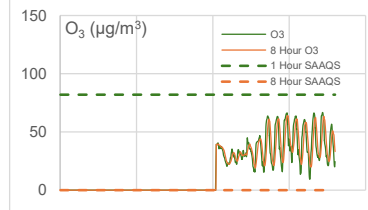
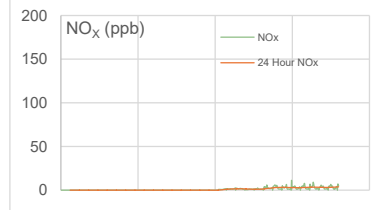
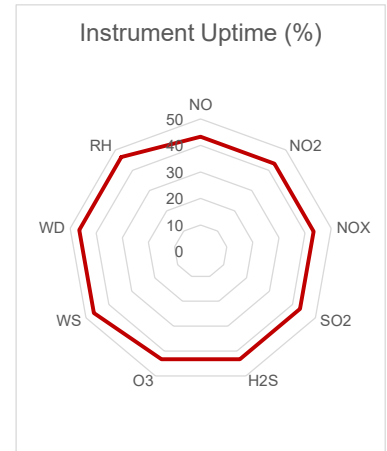
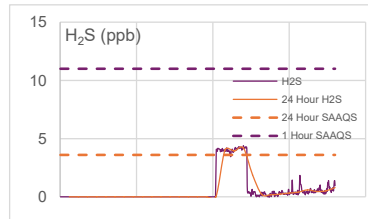
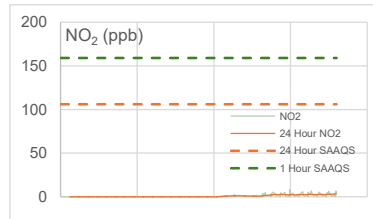
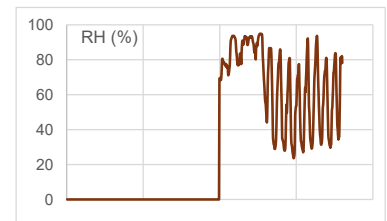
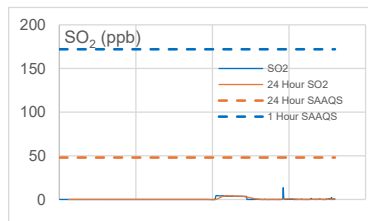
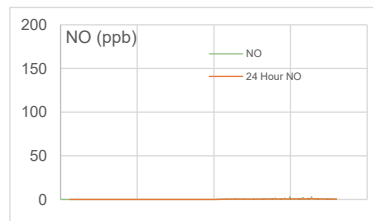
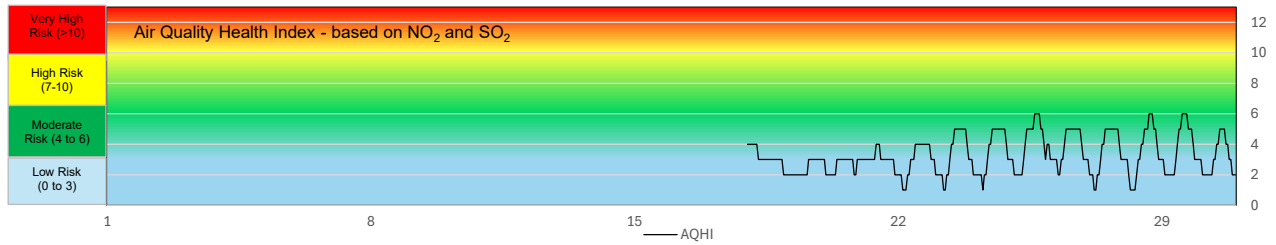
* Most recent quarterly calibrations were completed on April 26, 2025.



SESAA Glen Ewen Station - May 2025 Summary Report

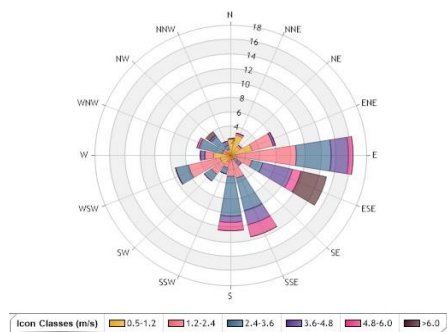
Pollutants		Month Records		24 Hour Records				1 Hour Records			
Name	Unit	Average Concentration	Uptime	Maximum		SAAQS*	Exceedance Days	Maximum		SAAQS*	Exceed Hours
				Conc.	Date			Conc.	Date and Time		
NO	ppb	0.5	43.3%	0.68	5/28/2025	-	-	3.1	5/25/2025 10:00 PM	-	-
NO ₂	ppb	2.2	43.3%	3.37	5/30/2025	106	0	8.4	5/31/2025 10:00 PM	159	0
NO _x	ppb	2.6	43.3%	3.80	5/30/2025	-	-	11.3	5/25/2025 10:00 PM	-	-
SO ₂	ppb	1.1	43.3%	4.11	5/18/2025	48	0	13.4	5/25/2025 9:00 AM	172	0
H ₂ S	ppb	1.4	43.3%	4.19	5/20/2025	3.6	3	4.4	5/21/2025 12:00 AM	11	0
O ₃	ppb	37.7	43.3%	63.80	5/25/2025	124 (8 hours)	0	69.2	5/31/2025 5:00 PM	82	0

SAAQS: Saskatchewan Ambient Air Quality Standards

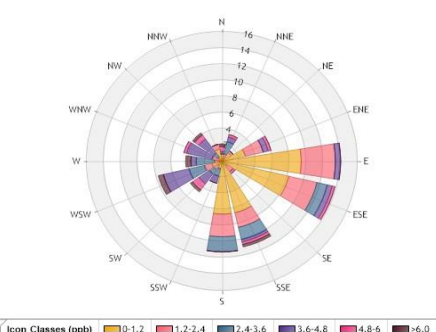


SESAA Glen Ewen Station - May 2025 Summary Report

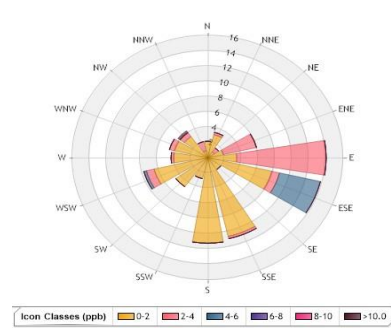
Exceedance Summary										
24-hour Exceedance Information			Summary of other Parameters during Exceedance							
Pollutant	Date	Conc.	WS	WD	H ₂ S	NO	NO ₂	NO _x	SO ₂	O ₃
H ₂ S	18-May	4.04	5.9	108.2	4.0	0.3	0.8	1.1	4.1	35.6
H ₂ S	19-May	3.93	2.5	82.8	3.9	0.4	1.1	1.5	3.8	26.5
H ₂ S	20-May	4.19	1.8	81.9	4.2	0.3	1.1	1.4	3.6	29.2



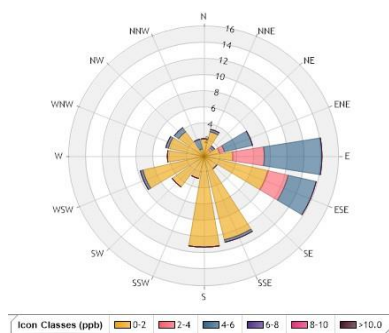
Wind Rose



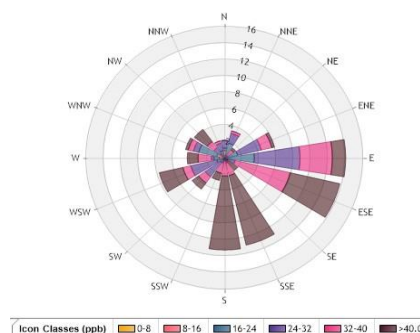
NO₂ Pollution Rose



SO₂ Pollution Rose



H₂S Pollution Rose



O₃ Pollution Rose

Parameters	Unit	Color Code for Wind Speed and Pollutant Conc. Class						
Wind Speed	m/s	0.5 -W- 1.2	1.2 -W- 2.4	2.4 -W- 3.6	3.6 -W- 4.8	4.8 -W- 6.0	W > 6.0	
NO ₂	ppb	0.0-C- 1.2	1.2 -C- 2.4	2.4 -C- 3.6	3.6 -C- 4.8	4.8 -C- 6.0	C > 6.0	
SO ₂	ppb	0.0-C-2.0	2.0-C-4.0	4.0-C-6.0	6.0-C-8.0	8.0-C-10.0	C > 10.0	
H ₂ S	ppb	0.0-C-2.0	2.0-C-4.0	4.0-C-6.0	6.0-C-8.0	8.0-C-10.0	C > 10.0	
O ₃	ppb	0.0-C-8.0	8.0-C-16.0	16.0-C-24.0	24.0-C-32.0	32.0-C-40.0	C > 40.0	

Monthly Update

* Data referenced is raw data that has not undergone the validation process due to internal span and zero inconsistencies for all analyzers.

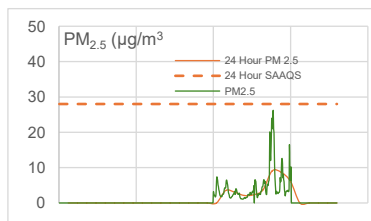
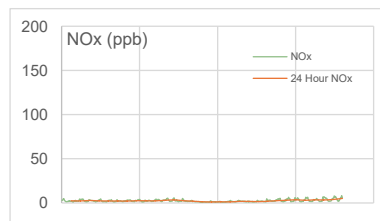
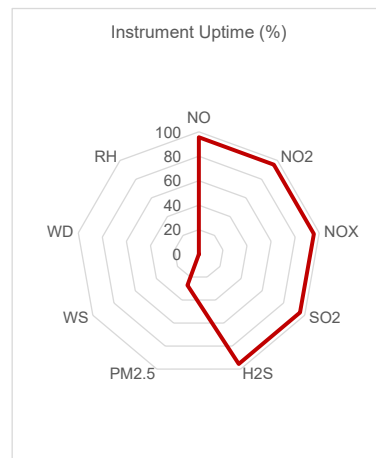
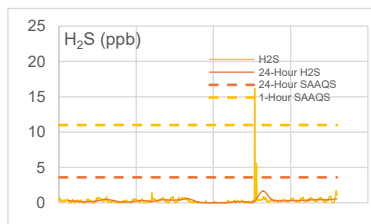
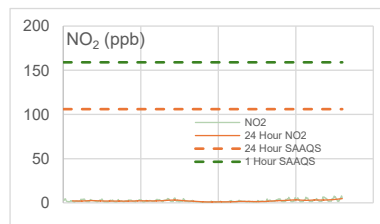
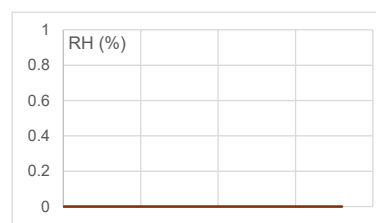
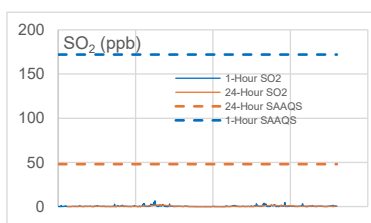
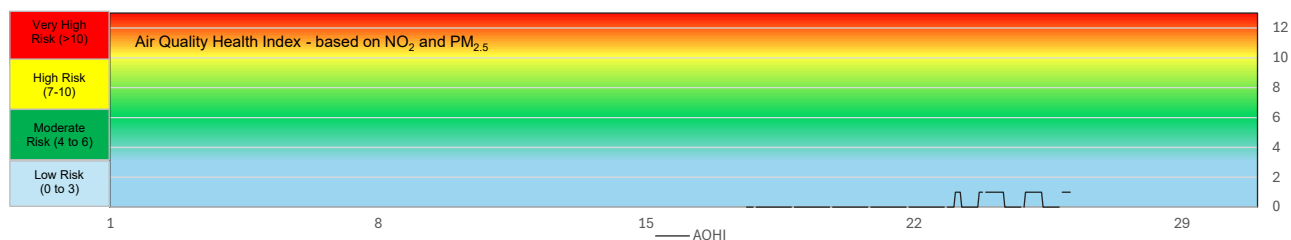
* Modem reinstalled on May 17, 2025.



SESAA Oxbow Station - May 2025 Summary Report

Pollutants		Month Records		24 Hour Records				1 Hour Records			
Name	Unit	Average Concentration	Uptime	Maximum		SAAQS*	Exceedance Days	Maximum		SAAQS*	Exceed Hours
				Conc.	Date			Conc.	Date and Time		
NO	ppb	0.3	95.6%	0.4	5/30/2025	-	-	1.1	5/12/2025 8:00 AM	-	-
NO ₂	ppb	2.4	95.6%	5.5	5/31/2025	106	0	9.4	5/31/2025 10:00 PM	159	0
NO _x	ppb	2.6	95.6%	5.8	5/31/2025	-	-	9.7	5/31/2025 10:00 PM	-	-
SO ₂	ppb	0.4	95.6%	1.9	5/11/2025	48	0	6.6	5/11/2025 10:00 PM	172	0
H ₂ S	ppb	0.3	95.6%	1.7	5/22/2025	3.6	0	16.2	5/22/2025 3:00 AM	11	1
PM _{2.5}	µg/m ³	4.7	27.0%	9.1	5/23/2025	28	0	26.2	5/24/2025 3:00 AM	-	-

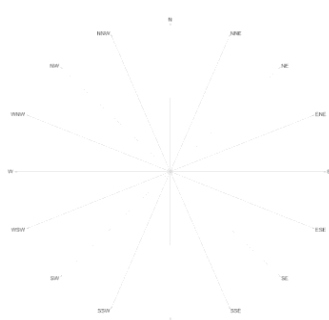
SAAQS: Saskatchewan Ambient Air Quality Standards



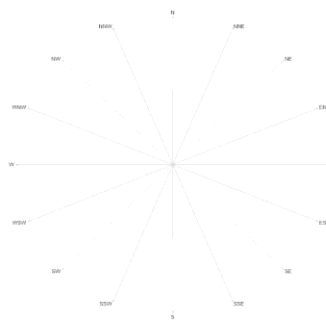
SESAA Oxbow Station - May 2025 Summary Report

Exceedance Summary

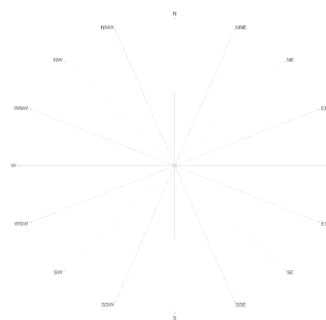
Exceedance Information			Summary of other Parameters during Exceedance							
Pollutant	Date	Conc.	WS	WD	H ₂ S	NO	NO ₂	NO _x	SO ₂	PM _{2.5}
H ₂ S	22-May	16.2	<Samp	<Samp	16.2	0.5	1.5	1.8	0.9	6.2



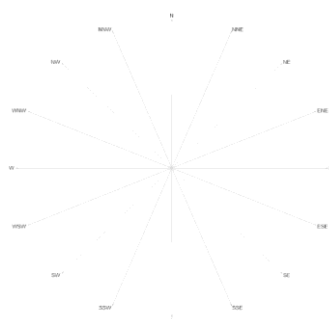
Wind Rose



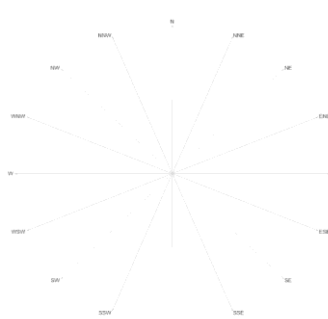
NO₂ Pollution Rose



SO₂ Pollution Rose



H₂S Pollution Rose



PM_{2.5} Pollution Rose

Parameters	Unit	Color Code for Wind Speed and Pollutant Concentration Class					
Wind Speed	m/s	N/A	N/A	N/A	N/A	N/A	N/A
NO ₂	ppb	N/A	N/A	N/A	N/A	N/A	N/A
SO ₂	ppb	N/A	N/A	N/A	N/A	N/A	N/A
H ₂ S	ppb	N/A	N/A	N/A	N/A	N/A	N/A
PM _{2.5}	µg/m ³	N/A	N/A	N/A	N/A	N/A	N/A

Monthly Update

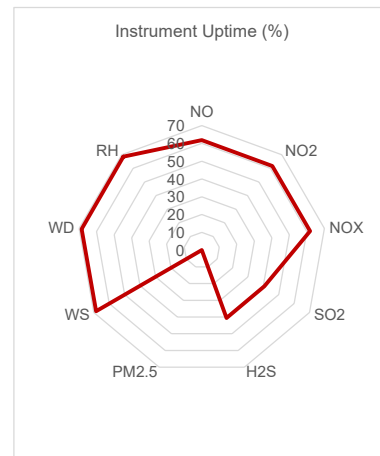
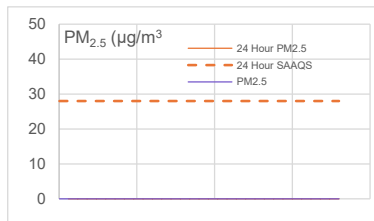
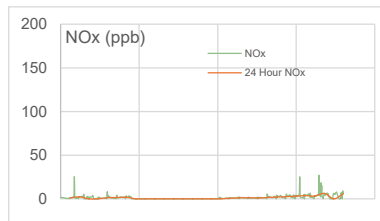
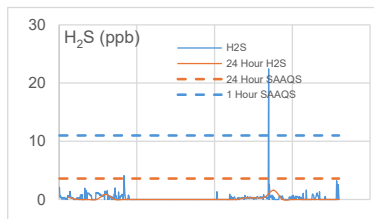
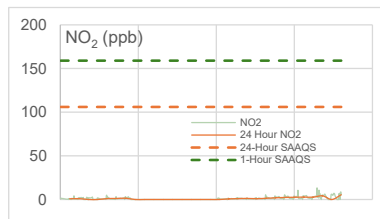
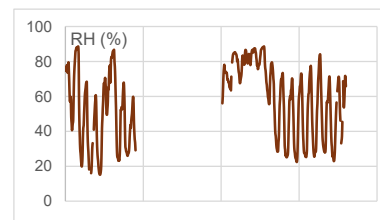
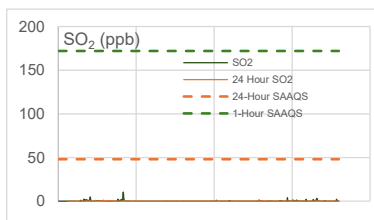
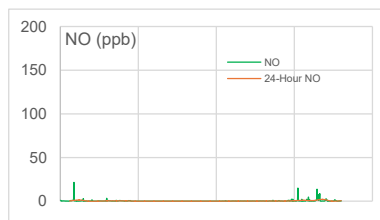
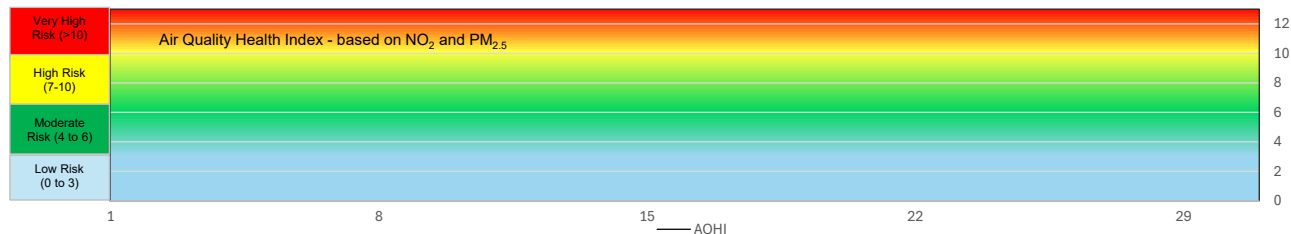
- * All data has been zero drift and baseline corrected, if needed. Data may change after final validation process.
- * All compliance parameters were within the Saskatchewan Ambient Air Quality Standards except for one H₂S hourly exceedance on May 22, 2025.
- * All compliance parameters were more than 90% operational for the month, except for PM_{2.5}.
- * A total of 744 hours of wind speed (WS) and wind direction (WD) data were flagged as "analyzer failure," resulting in missing data. The sensor was removed for maintenance.
- * A total of 534 hours of PM_{2.5} data intermittent throughout the month were flagged as "analyzer malfunction," resulting in missing and flatlined data.
- * One hour of data were flagged for all gas analyzers due to daily IZS checks, resulting in the loss of one hour of data each day.
- * Most recent quarterly calibrations were completed on April 23, 2025.



SESAA Stoughton Station - April 2025 Summary Report

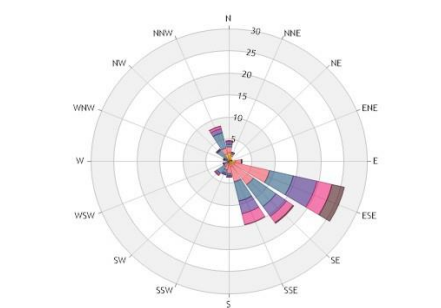
Pollutants		Month Records		24 Hour Records				1 Hour Records			
Name	Unit	Average Concentration	Uptime	Maximum		SAAQS*	Exceedance Days	Maximum		SAAQS*	Exceed Hours
				Conc.	Date			Conc.	Date and Time		
NO	ppb	0.5	61.8%	2.1	5/28/2025	-	-	21.5	5/2/2025 11:00 AM	-	-
NO ₂	ppb	2.1	61.7%	5.4	5/30/2025	106	0	13.3	5/28/2025 10:00 AM	159	0
NO _x	ppb	2.6	61.8%	6.2	5/28/2025	-	-	27.0	5/28/2025 10:00 AM	-	-
SO ₂	ppb	0.4	40.6%	0.5	5/5/2025	48	0	10.4	5/7/2025 11:00 PM	172	0
H ₂ S	ppb	0.7	40.6%	1.6	5/23/2025	3.6	0	22.4	5/23/2025 11:00 AM	11	1
PM _{2.5}	µg/m ³	No Data	0.0%	0.0	-	28	0	No Data	-	-	-

SAAQS: Saskatchewan Ambient Air Quality Standards

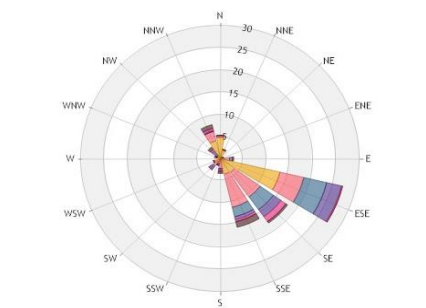


SESAA Stoughton Station - April 2025 Summary Report

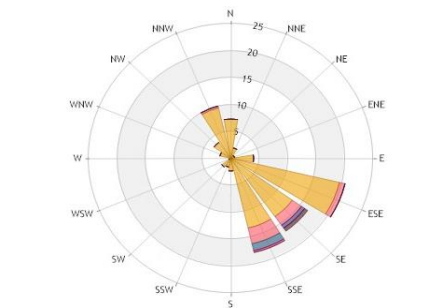
Exceedance Summary										
Exceedance Summary			Summary of other Parameters during Exceedance							
Pollutant	Date	Conc.	WS	WD	H ₂ S	NO	NO ₂	NO _x	SO ₂	PM _{2.5}
H ₂ S	5/23/25 11:00 AM	22.4	4.6	124.8	22.4	0.1	1.1	1.2	0.2	No data



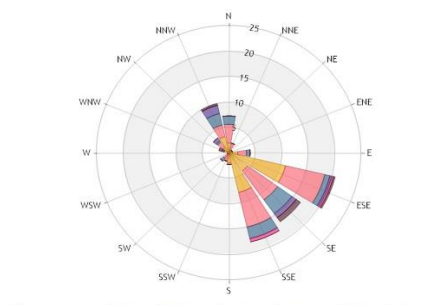
Wind Rose



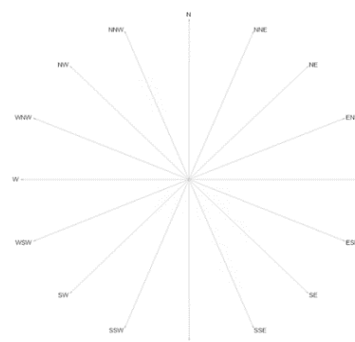
NO₂ Pollution Rose



SO₂ Pollution Rose



H₂S Pollution Rose



PM_{2.5} Pollution Rose

Parameters	Unit	Color Code for Wind Speed and Pollutant Concentration Class						
Wind Speed	m/s	0.5 -W- 1.2	1.2 -W- 2.4	2.4 -W- 3.6	3.6 -W- 4.8	4.8 -W- 6.0	W > 6.0	
NO ₂	ppb	0.0 -C- 1.2	1.2 -C- 2.4	2.4 -C- 3.6	3.6 -C- 4.8	4.8 -C- 6.0	C > 6.0	
SO ₂	ppb	0.0 -C- 1.2	1.2 -C- 2.4	2.4 -C- 3.6	3.6 -C- 4.8	4.8 -C- 6.0	C > 6.0	
H ₂ S	ppb	0.0 -C- 0.4	0.4 -C- 0.8	0.8 -C- 1.2	1.2 -C- 1.6	1.6 -C- 2.0	C > 2.0	
PM _{2.5}	µg/m ³	N/A	N/A	N/A	N/A	N/A	N/A	

Monthly Update

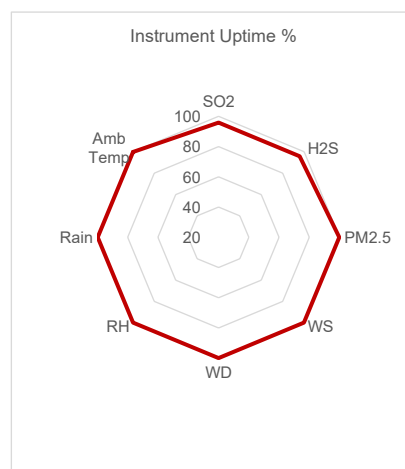
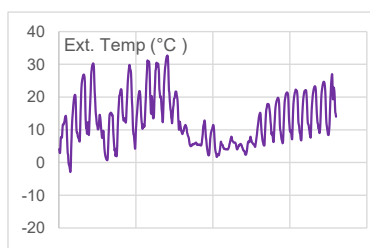
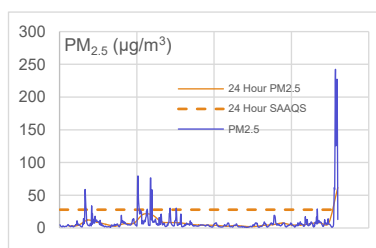
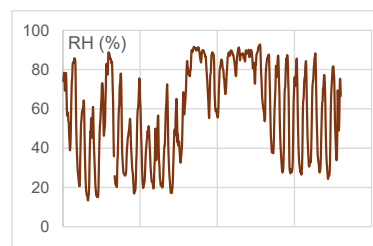
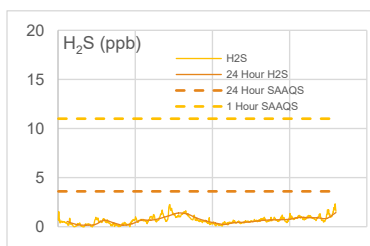
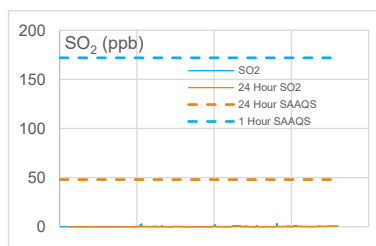
- * Data referenced is raw data that has not undergone the validation process due to internal span and zero inconsistencies as well as Intermittent shelter temperature fluctuations were observed in the shelter during the reporting period which affect the data integrity for all analyzers.
- * All compliance parameters were within the Saskatchewan Ambient Air Quality Standards with the exception of one, one-hour H₂S exceedance.
- * All compliance parameters were less than 90% operational for the month.
- * PM_{2.5} was removed from service in December 2024 for repair.
- * One hour of data were flagged for all gas analyzers due to daily IZS checks, resulting in the loss of one hour of data each day.
- * A total of 222 hours of data lost for all analyzers due to airpointer shutdown due to high internal temperatures.
- * A total of 41 hours of NO₂ data was flagged due to analyzer malfunction.
- * A total of 181 hours of H₂S/SO₂ data was flagged due to analyzer malfunction.
- * Most recent quarterly calibrations were completed on April 22, 2025



SESAA Torquay Station - May 2025 Summary Report

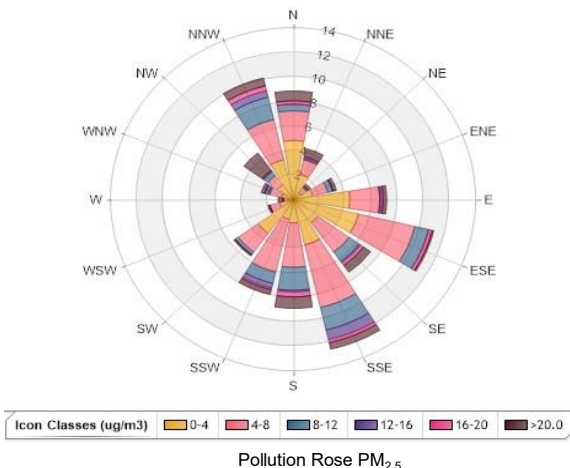
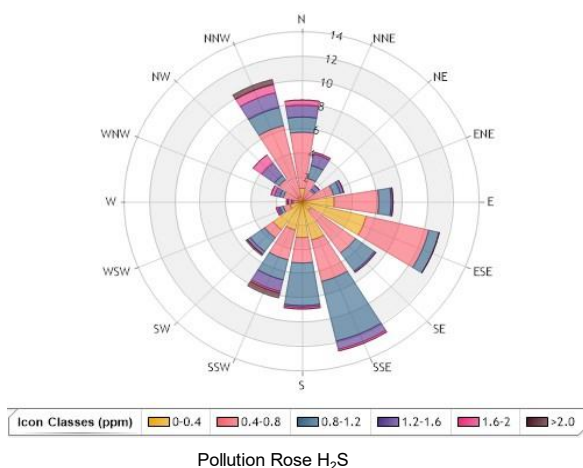
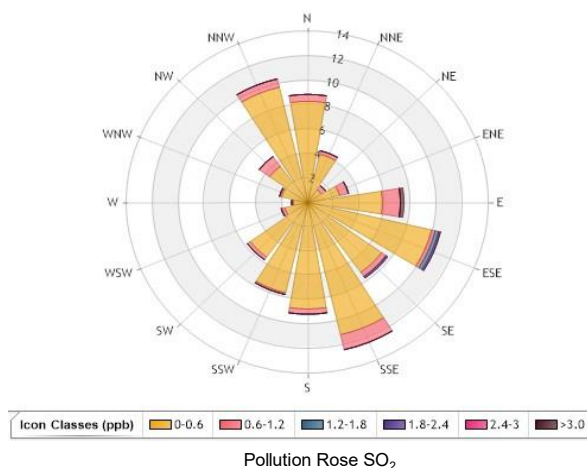
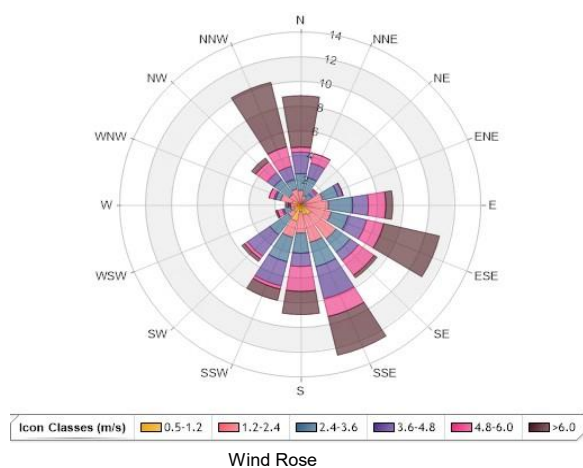
Pollutants		Month Records		24 Hour Records				1 Hour Records			
Name	Unit	Average Concentration	Uptime	Maximum		SAAQS*	Exceedance Days	Maximum		SAAQS*	Exceed Hours
				Conc.	Date			Conc.	Date and Time		
SO ₂	ppb	0.2	95.8%	0.7	5/31/2025	48	0	3.4	5/24/2025 10:00 AM	172	0
H ₂ S	ppb	0.7	95.8%	1.8	5/31/2025	3.6	0	3.6	5/31/2025 10:00 PM	11	0
PM _{2.5}	µg/m ³	11.9	99.9%	111.6	5/31/2025	28	2	242.4	5/30/2025 6:00 PM	-	-

SAAQS: Saskatchewan Ambient Air Quality Standards



Exceedance Summary								
24-hour Exceedance Information			Summary of other Parameters during Exceedance					
Pollutant	Date	Conc.	WS	WD	Precip.	SO ₂	H ₂ S	PM _{2.5}
PM _{2.5}	30-May	61.8	3.3	264.1	0.0	0.5	1.4	61.8
PM _{2.5}	31-May	111.6	3.1	295.8	0.0	0.7	1.8	111.6

SESAA Torquay Station - May 2025 Summary Report



Parameters	Unit	Color Code for Wind Speed and Pollutant Concentration Class						
Wind Speed	m/s	0.5 -W- 1.2	1.2 -W- 2.4	2.4 -W- 3.6	3.6 -W- 4.8	4.8 -W- 6.0	W > 6.0	
SO ₂	ppb	0.0-C-0.6	0.6-C-1.2	1.2-C-1.8	1.8-C-2.4	2.4-C-3.0	C > 3.0	
H ₂ S	ppb	0.0-C-0.4	0.4-C-0.8	0.8-C-1.2	1.2-C-1.6	1.6-C-2.0	C > 2.0	
PM _{2.5}	ug/m ³	0.0-C-4.0	4.0-C-8.0	8.0-C-12.0	12.0-C-16.0	16.0-C-20.0	C > 20.0	

Monthly Update

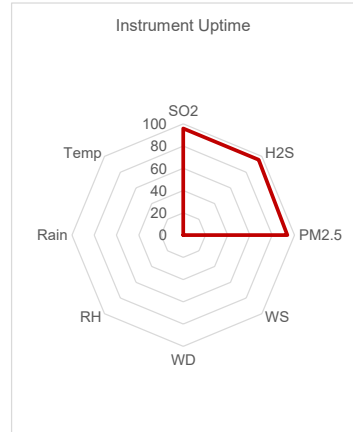
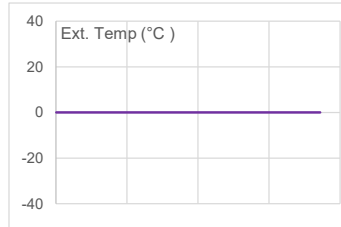
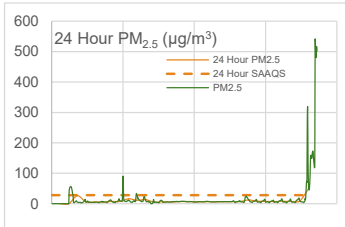
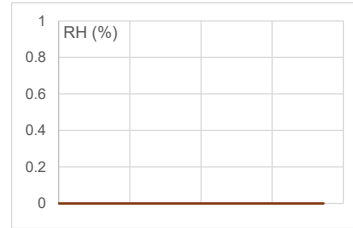
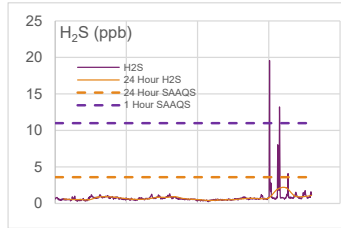
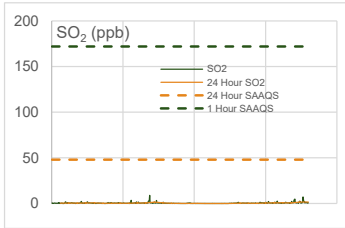
- * All data has been zero drift and baseline corrected, if needed. Data may change after final validation process.
- * All compliance parameters were within the Saskatchewan Ambient Air Quality Standards except for two, 24-hour PM_{2.5} exceedances due to smoke from regional wildfires.
- * All compliance parameters were more than 90% operational for the month.
- * One hour of data were flagged for all gas analyzers due to daily IZS checks, resulting in the loss of one hour of data each day.
- * Most recent quarterly calibrations were completed on April 24, 2025.



SESAA Wauchope Station - May 2025 Summary Report

Pollutants		Month Records		24 Hour Records				1 Hour Records			
Name	Unit	Average Concentration	Uptime	Maximum		SAAQS*	Exceedance Days	Maximum		SAAQS*	Exceed Hours
				Conc.	Date			Conc.	Date and Time		
SO ₂	ppb	0.5	95.8%	1.6	5/30/2025	48	0	8.9	5/12/2025 11:00 AM	172	0
H ₂ S	ppb	0.8	95.8%	2.2	5/27/2025	3.6	0	19.58	5/26/2025 2:00 AM	11	2
PM _{2.5}	µg/m ³	17.1	93.6%	220.9	5/31/2025	28	2	541.7	5/31/2025 7:00 PM	-	-

SAAQS: Saskatchewan Ambient Air Quality Standards



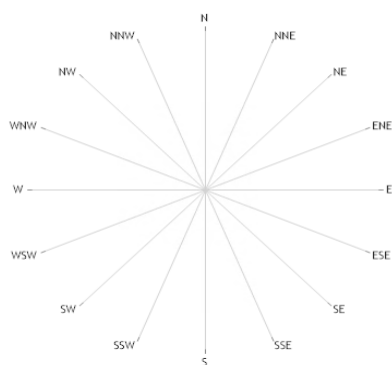
Exceedance Summary (24-Hour Average)

24-hour Exceedance Information			Summary of other Parameters during Exceedance						
Pollutant	Date	Conc.	WS	WD	Precip.	SO ₂	H ₂ S	PM _{2.5}	
PM _{2.5}	30-May	48.5	<Samp	<Samp	<Samp	1.6	1.1	48.5	
PM _{2.5}	31-May	220.9	<Samp	<Samp	<Samp	0.9	1.8	220.9	

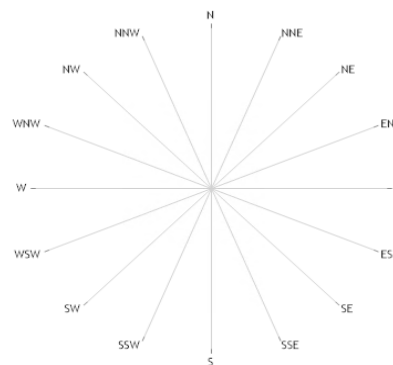
SESAA Wauchope Station - May 2025 Summary Report

Exceedance Summary (1-Hour Average)

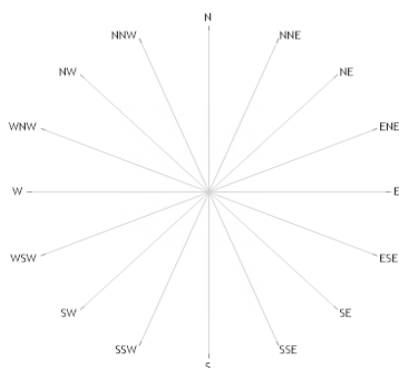
1-hour Exceedance Information				Summary of Other Parameters During Exceedance					
Pollutant	Date	Time	Conc.	WS	WD	Precip.	SO ₂	H ₂ S	PM _{2.5}
H ₂ S	26-May	2:00 AM	19.6	<Samp	<Samp	<Samp	0.7	19.6	5.2
H ₂ S	27-May	6:00 AM	13.2	<Samp	<Samp	<Samp	0.4	13.2	6.4



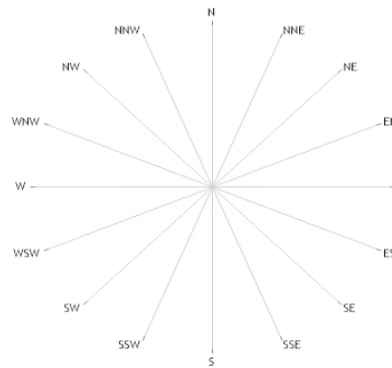
Wind Rose



Pollution Rose SO₂



Pollution Rose H₂S



Pollution Rose PM_{2.5}

Parameters	Unit	Color Code for Wind Speed and Pollutant Concentration Class					
Wind Speed	m/s	N/A	N/A	N/A	N/A	N/A	N/A
SO ₂	ppb	N/A	N/A	N/A	N/A	N/A	N/A
H ₂ S	ppb	N/A	N/A	N/A	N/A	N/A	N/A
PM _{2.5}	µg/m ³	N/A	N/A	N/A	N/A	N/A	N/A

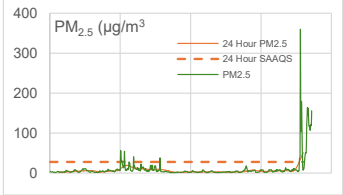
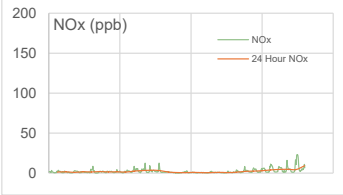
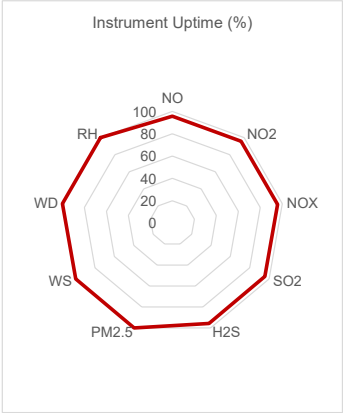
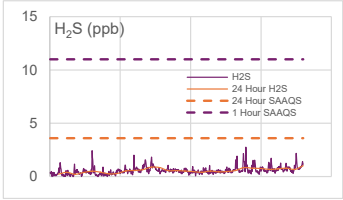
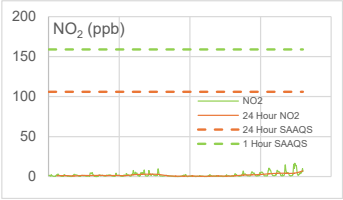
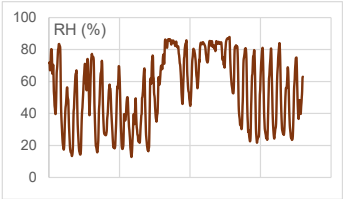
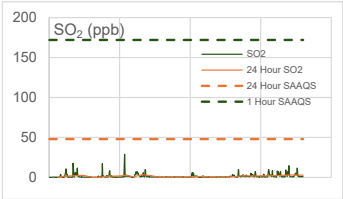
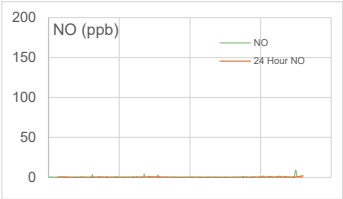
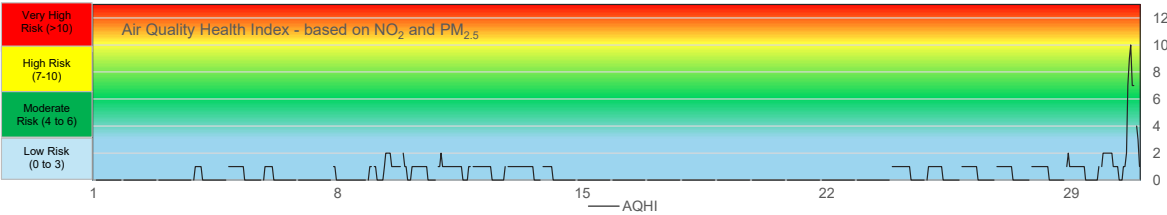
Monthly Update

- * All data has been zero baseline corrected, if any. Data may change after final validation process.
- * All compliance parameters were within the Saskatchewan Ambient Air Quality Standards with the exception of two, one-hour H₂S exceedances and two 24-hour PM_{2.5} exceedances due to smoke from regional wildfires.
- * All compliance parameters were more than 90% operational for the month.
- * A total of 744 hours of data flagged as "analyzer failure" for WS/WD
- * One hour of data were flagged for all gas analyzers due to daily IZS checks, resulting in the loss of one hour of data each day.
- * Temperature fluctuations were observed in the shelter during the reporting period due to a heater failure. While these fluctuations led to data being flagged, the SO₂ and H₂S data remained valid.
- * Most recent quarterly calibrations were completed on April 22, 2025.



SESAA Weyburn Station - May 2025 Summary Report											
Pollutants		Month Records		24 Hour Records				1 Hour Records			
Name	Unit	Average Concentration	Uptime	Maximum		SAAQS*	Exceedance Days	Maximum		SAAQS*	Exceed Hours
				Conc.	Date			Conc.	Date and Time		
NO	ppb	0.5	95.7%	2.5	5/31/2025	-	-	29.3	5/31/2025 10:00 PM	-	-
NO ₂	ppb	2.1	95.7%	8.9	5/31/2025	106	0	38.0	5/31/2025 10:00 PM	159	0
NO _x	ppb	2.6	95.7%	11.4	5/31/2025	-	-	67.3	5/31/2025 10:00 PM	-	-
SO ₂	ppb	1.5	95.7%	3.3	5/29/2025	48	0	29.1	5/9/2025 10:00 PM	172	0
H ₂ S	ppb	0.6	95.7%	1.1	5/31/2025	3.6	0	2.8	5/24/2025 5:00 AM	11	0
PM _{2.5}	µg/m ³	10.1	100.0%	96.1	5/31/2025	28	2	360.0	5/30/2025 4:00 PM	-	-

SAAQS: Saskatchewan Ambient Air Quality Standards



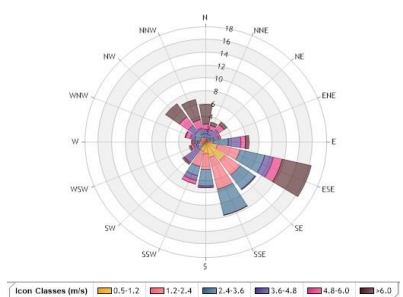
SESAA Weyburn Station - May 2025 Summary Report

Exceedance Summary (24-Hours Average)

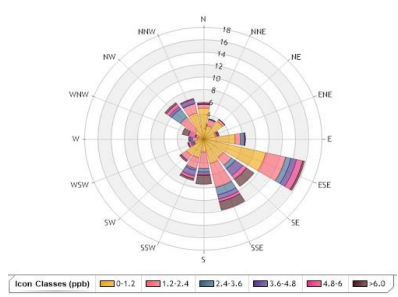
24-hours Exceedance Information			Summary of other Parameters during Exceedance							
Pollutant	Date	Conc.	WS	WD	H ₂ S	NO	NO ₂	NO _x	SO ₂	PM _{2.5}
PM _{2.5}	30-May	50.9	3.8	253	1.0	2.2	7.1	9.3	2.8	50.9
PM _{2.5}	31-May	96.1	3.1	272	1.1	2.5	8.9	11.4	1.4	96.1

Exceedance Summary (1-Hour Average)

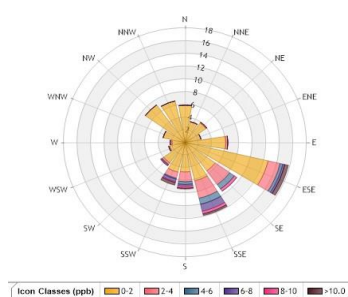
1-hour Exceedance Information				Summary of Other Parameters During Exceedance					
Pollutant	Date	Time	Conc.	WS	WD	Precip.	SO ₂	NO ₂	PM _{2.5}



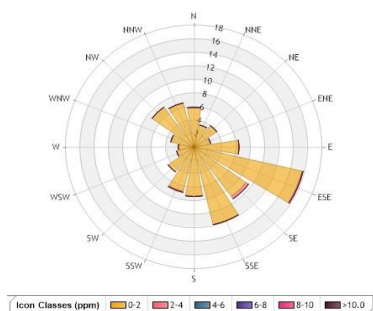
Wind Rose



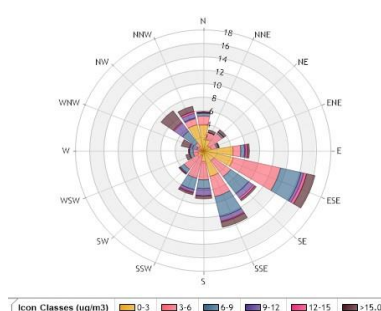
NO₂ Pollution Rose



SO₂ Pollution Rose



H₂S Pollution Rose



PM_{2.5} Pollution Rose

Parameters	Unit	Color Code for Wind Speed and Pollutant Concentration Class						
Wind Speed	m/s	0.5 -W- 1.2	1.2 -W- 2.4	2.4 -W- 3.6	3.6 -W- 4.8	4.8 -W- 6.0	W > 6.0	
NO ₂	ppb	0.0-C- 1.2	1.2 -C- 2.4	2.4 -C- 3.6	3.6 -C- 4.8	4.8 -C- 6.0	C > 6.0	
SO ₂	ppb	0.0-C-2.0	2.0-C-4.0	4.0-C-6.0	6.0-C-8.0	8.0-C-10.0	C > 10.0	
H ₂ S	ppb	0.0-C-2.0	2.0-C-4.0	4.0-C-6.0	6.0-C-8.0	8.0-C-10.0	C > 10.0	
PM _{2.5}	µg/m ³	0.0-C-3.0	3.0-C-6.0	6.0-C-9.0	9.0-C-12.0	12.0-C-15.0	C > 15.0	

Monthly Update

- * All data has been zero drift and baseline corrected, if needed. Data may change after final validation process.
- * All compliance parameters were within the Saskatchewan Ambient Air Quality Standards with the exception of two, 24-hour PM_{2.5} exceedances due to smoke from regional wildfires.
- * All compliance parameters were more than 90% operational for the month.
- * One hour of data were flagged for all gas analyzers due to daily IZS checks, resulting in the loss of one hour of data each day.
- * The SO₂ permeation tube was depleted, and as a result, daily span checks were not included in the data process.
- * Most recent quarterly calibrations were completed on April 25, 2025.

