

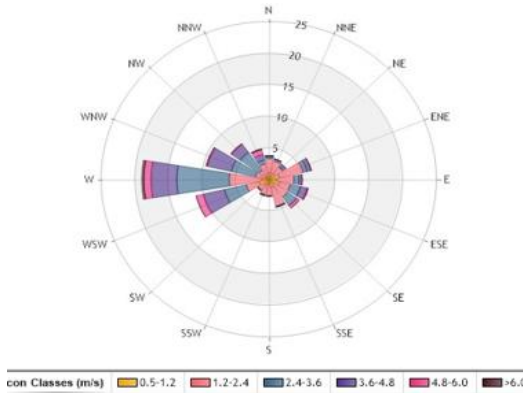
SESAA Esterhazy Station - December 2025 Summary Report											
Pollutant		Month Records		24 Hour Records				1 Hour Records			
Name	Unit	Average Concentration	Uptime	Maximum		SAAQS*	Exceedance Days	Maximum		SAAQS*	Exceed Hours
				Conc.	Date			Concentration	Date and Time		
NO	ppb	0.5	81.7%	1.1	12/10/2025	-	-	11.1	12/10/2025 10:00 AM	-	-
NO ₂	ppb	2.5	81.7%	5.7	12/15/2025	106	0	21.2	12/15/2025 12:00 AM	159	0
NO _x	ppb	3	81.7%	6.6	12/15/2025	-	-	28	12/10/2025 10:00 AM	-	-
O ₃	ppb	20.7	81.1%	33.4	12/19/2025	124 (8-Hour)	0	34.9	12/25/2025 6:00 AM	82	0
PM _{2.5}	µg/m ³	4	24.3%	8.2	12/26/2025	28	0	12.3	12/25/2025 11:00 PM	-	-

SAAQS: Saskatchewan Ambient Air Quality Standards

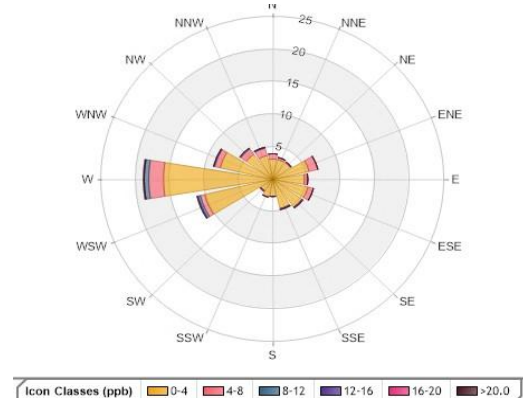


Exceedance Summary									
24-hour Exceedance Information			Summary of other Parameters during Exceedance						
Pollutant	Date	Conc.	WS	WD	Precip.	NO	NO ₂	NO _x	PM _{2.5}

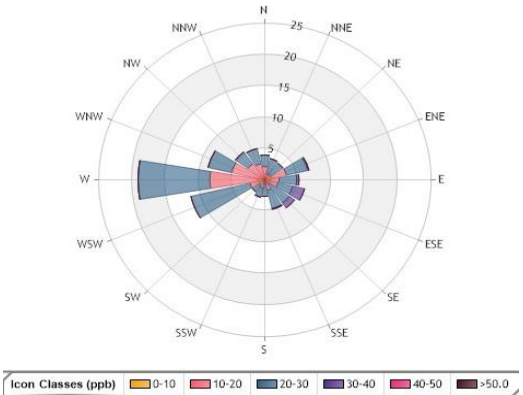
SESAA Esterhazy Station - December 2025 Summary Report



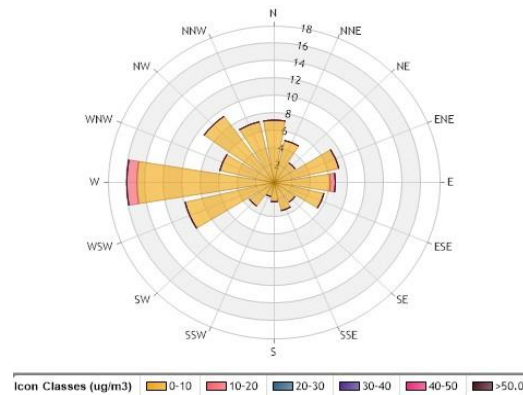
Wind Rose



Pollution Rose NO₂



Pollution Rose O₃



Pollution Rose PM_{2.5}

Parameters	Unit	Color Code for Wind Speed and Pollutant Concentration Class					
Wind Speed	m/s	0.5 - 1.2	1.2 - 2.4	2.4 - 3.6	3.6 - 4.8	4.8 - 6.0	> 6.0
NO ₂	ppb	0.0-C-4.0	4.0-C-8.0	8.0-C-12.0	12.0-C-16.0	16.0-C-20.0	> 20
O ₃	ppb	0.0-C-10.0	10.0-C-20.0	20.0-C-30.0	30.0-C-40.0	40.0-C-50.0	> 50
PM _{2.5}	µg/m ³	0.0-C-10.0	10.0-C-20.0	20.0-C-30.0	30.0-C-40.0	40.0-C-50.0	> 50

Monthly Update

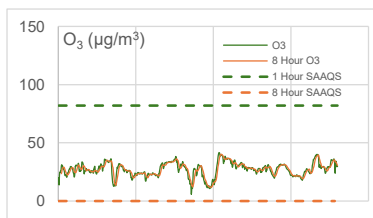
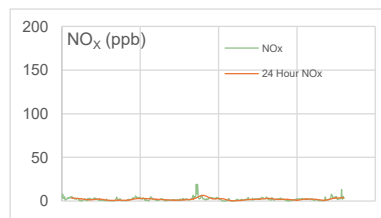
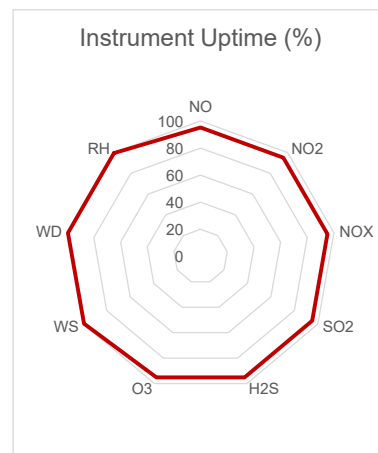
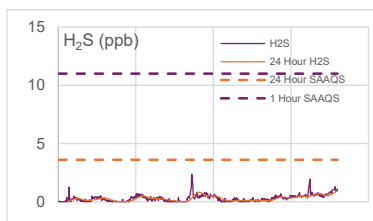
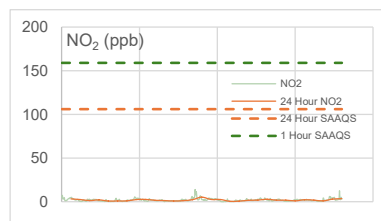
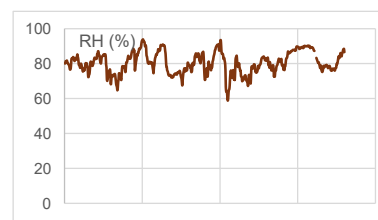
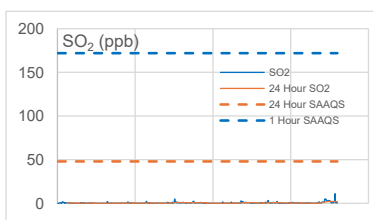
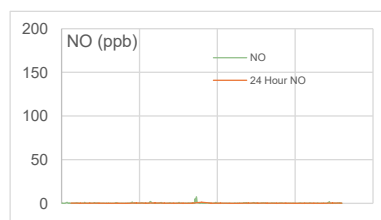
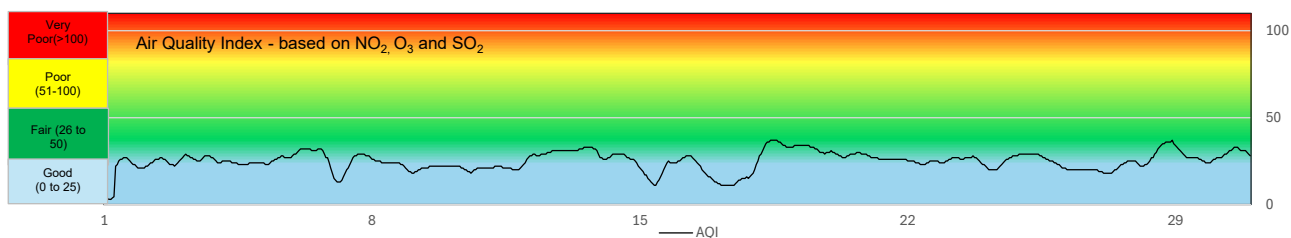
- * System was restarted on December 5, 2025.
- * All data has been zero drift, and baseline corrected, when required. Data may change after final validation process.
- * All compliance parameters were within the Saskatchewan Ambient Air Quality Standards.
- * All compliance parameters were less than 90% operational for the month.
- * NO_x permeation tube is depleting and needs replacement; hence, the internal span check is excluded from the daily checks & data processing.
- * The O₃ internal zero was unstable, likely due to significant shelter temperature fluctuations during the reporting period. The data were flagged but not invalidated, as no instrument malfunction was observed.
- * One hour of data were flagged for all gas analyzers due to daily IZS checks, resulting in the loss of one hour of data each day.
- * Quarterly calibrations completed on December 5, 2025



SESAA Glen Ewen Station - December 2025 Summary Report

Pollutants		Month Records		24 Hour Records				1 Hour Records			
Name	Unit	Average Concentration	Uptime	Maximum		SAAQS*	Exceedance Days	Maximum		SAAQS*	Exceed Hours
				Conc.	Date			Conc.	Date and Time		
NO	ppb	0.2	95.2%	1.2	12/15/2025	-	-	7.5	12/15/2025 10:00 AM	-	-
NO ₂	ppb	1.9	95.2%	5.2	12/15/2025	106	0	14	12/15/2025 7:00 AM	159	0
NO _x	ppb	2.1	95.2%	6.4	12/15/2025	-	-	19.3	12/15/2025 7:00 AM	-	-
SO ₂	ppb	0.5	95.2%	2.1	12/29/2025	48	0	11.1	12/30/2025 6:00 PM	172	0
H ₂ S	ppb	0.3	95.2%	0.9	12/30/2025	3.6	0	2.3	12/15/2025 8:00 AM	11	0
O ₃	ppb	27.4	95.2%	40.2	12/18/2025	124 (8 hours)	0	41.6	12/18/2025 7:00 AM	82	0

SAAQS: Saskatchewan Ambient Air Quality Standards



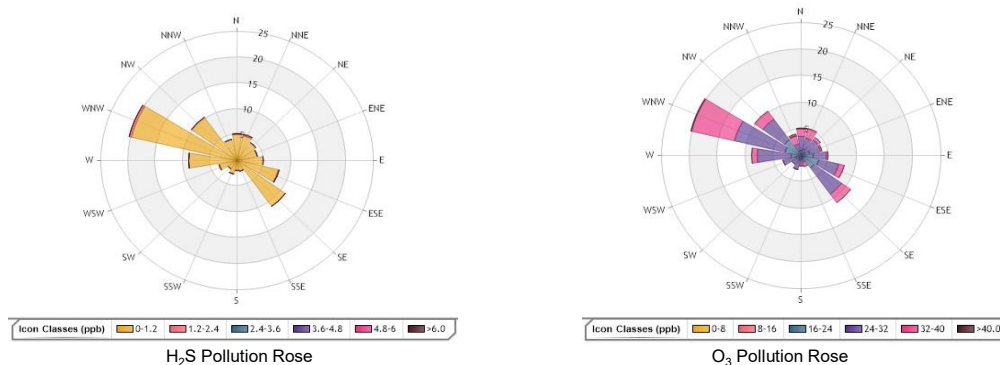
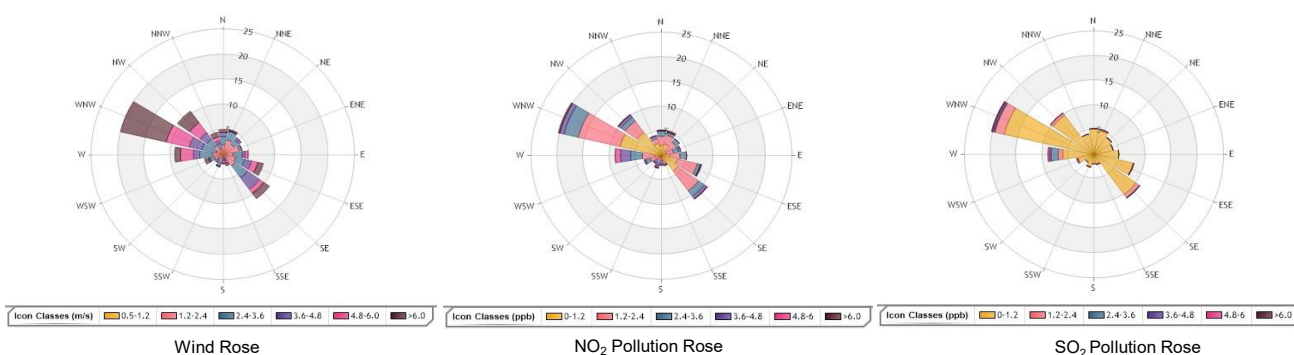
SESAA Glen Ewen Station - December 2025 Summary Report

Exceedance Summary (24-Hour Average)

24-hour Exceedance Information			Summary of other Parameters during Exceedance							
Pollutant	Date	Conc.	WS	WD	H ₂ S	NO	NO ₂	NOx	SO ₂	O ₃

Exceedance Summary (1-Hour Average)

1-hour Exceedance Information			Summary of Other Parameters During Exceedance					
Pollutant	Date and Time	Conc.	WS	WD	Precip.	SO ₂	NO ₂	O ₃



Parameters	Unit	Color Code for Wind Speed and Pollutant Conc. Class						
Wind Speed	m/s	0.5-W- 1.2	1.2 -W- 2.4	2.4 -W- 3.6	3.6 -W- 4.8	4.8 -W- 6.0	W > 6.0	
NO ₂	ppb	0.0-C- 1.2	1.2 -C- 2.4	2.4 -C- 3.6	3.6 -C- 4.8	4.8 -C- 6.0	C > 6.0	
SO ₂	ppb	0.0-C- 1.2	1.2 -C- 2.4	2.4 -C- 3.6	3.6 -C- 4.8	4.8 -C- 6.0	C > 6.0	
H ₂ S	ppb	0.0-C- 1.2	1.2 -C- 2.4	2.4 -C- 3.6	3.6 -C- 4.8	4.8 -C- 6.0	C > 6.0	
O ₃	ppb	0.0-C-8.0	8.0-C-16.0	16.0-C-24.0	24.0-C-32.0	32.0-C-40.0	C > 40.0	

Monthly Update

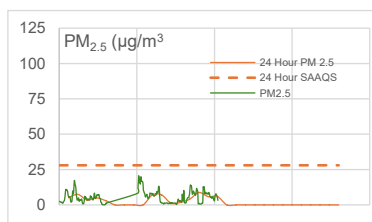
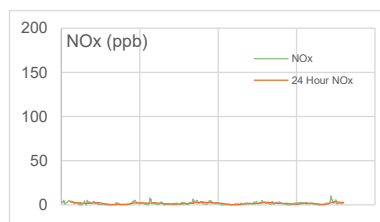
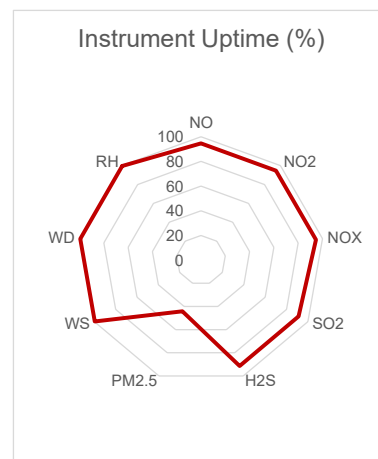
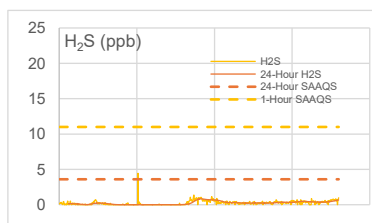
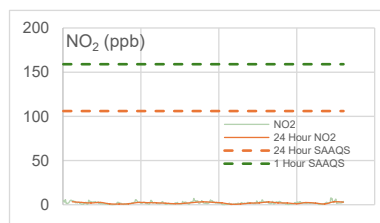
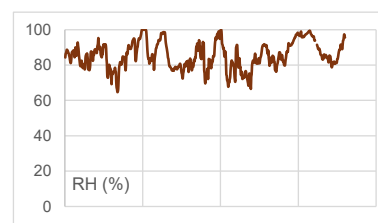
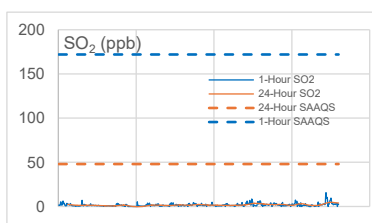
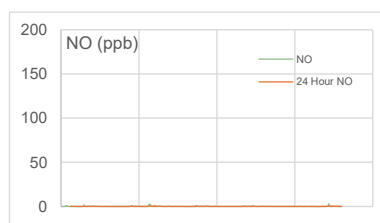
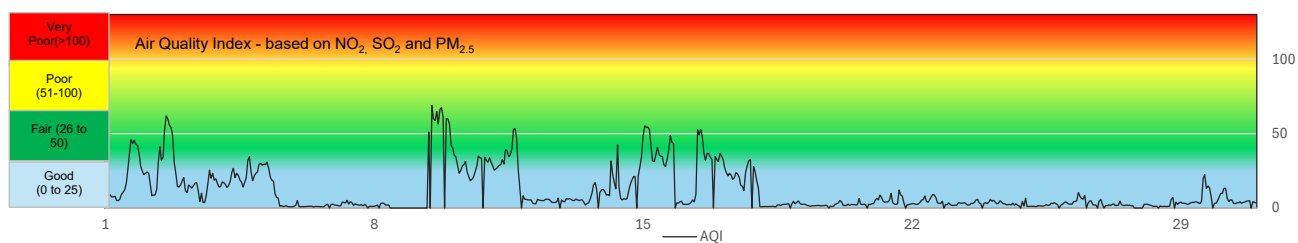
- * All data has been zero drift and baseline corrected, when required. Data may change after final validation process.
- * All compliance parameters were within the Saskatchewan Ambient Air Quality Standards.
- * All compliance parameters were greater than 90% operational for the month.
- * The NO₂ permeation tube was depleted, and as a result, daily span checks were not included in the data process.
- * The H₂S internal span was unstable, likely due to significant shelter temperature fluctuations and/or permeation tube issue during the reporting period. The data were flagged but not invalidated, as no instrument malfunction was observed.
- * One hour of data were flagged for all gas analyzers due to daily IZS checks, resulting in the loss of one hour of data each day.
- * Quarterly calibrations were completed on November 30, 2025.



SESAA Oxbow Station - December 2025 Summary Report

Pollutants		Month Records		24 Hour Records				1 Hour Records			
Name	Unit	Average Concentration	Uptime	Maximum		SAAQS*	Exceedance Days	Maximum		SAAQS*	Exceed Hours
				Conc.	Date			Conc.	Date and Time		
NO	ppb	0.1	94.6%	0.5	12/10/2025	-	-	3	12/29/2025 3:00 PM	-	-
NO ₂	ppb	2	94.6%	3.4	12/1/2025	106	0	7.7	12/29/2025 4:00 PM	159	0
NO _x	ppb	1.7	94.6%	3.3	12/29/2025	-	-	10.1	12/29/2025 3:00 PM	-	-
SO ₂	ppb	1.9	91.4%	4.6	12/29/2025	48	0	15.7	12/29/2025 4:00 PM	172	0
H ₂ S	ppb	0.3	91.4%	0.8	12/15/2025	3.6	0	4.4	12/9/2025 11:00 AM	11	0
PM _{2.5}	µg/m ³	5.5	44.2%	8.7	12/15/2025	28	0	20.6	12/9/2025 1:00 PM	-	-

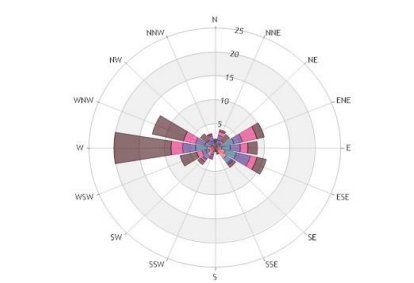
SAAQS: Saskatchewan Ambient Air Quality Standards



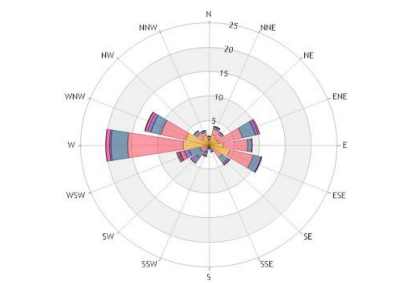
SESAA Oxbow Station - December 2025 Summary Report

Exceedance Summary

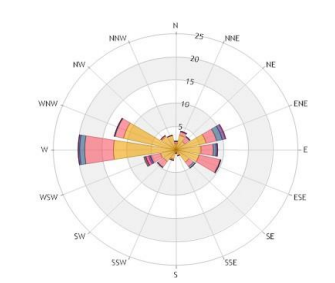
Exceedance Information			Summary of other Parameters during Exceedance							
Pollutant	Date	Conc.	WS	WD	H ₂ S	NO	NO ₂	NO _x	SO ₂	PM _{2.5}



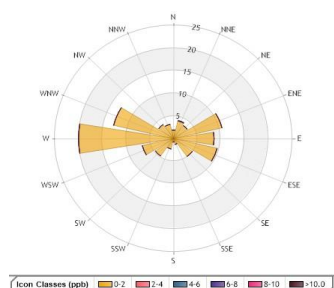
Wind Rose



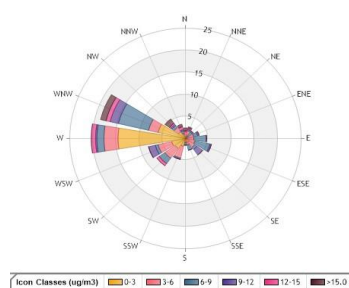
NO₂ Pollution Rose



SO₂ Pollution Rose



H₂S Pollution Rose



PM_{2.5} Pollution Rose

Parameters	Unit	Color Code for Wind Speed and Pollutant Concentration Class						
Wind Speed	m/s	0.5 -W- 1.2	1.2 -W- 2.4	2.4 -W- 3.6	3.6 -W- 4.8	4.8 -W- 6.0	W > 6.0	
NO ₂	ppb	0.0-C- 1.2	1.2 -C- 2.4	2.4-C- 3.6	3.6-C- 4.8	4.8 -C- 6.0	C > 6.0	
SO ₂	ppb	0.0-C-2.0	2.0-C-4.0	4.0-C-6.0	6.0-C-8.0	8.0-C-10.0	C > 10.0	
H ₂ S	ppb	0.0-C-2.0	2.0-C-4.0	4.0-C-6.0	6.0-C-8.0	8.0-C-10.0	C > 10.0	
PM _{2.5}	µg/m ³	0.0-C-3.0	3.0-C-6.0	6.0-C-9.0	9.0-C-12.0	12.0-C-15.0	C > 15.0	

Monthly Update

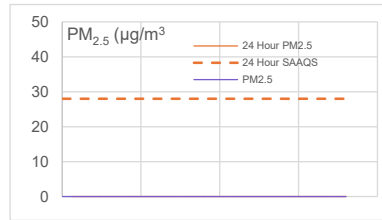
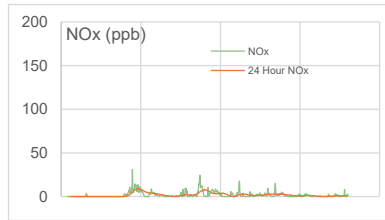
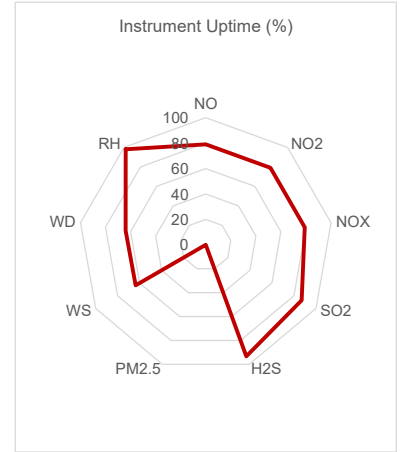
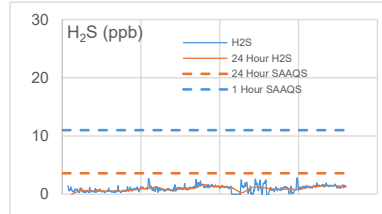
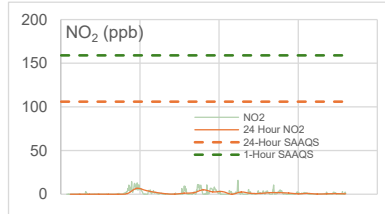
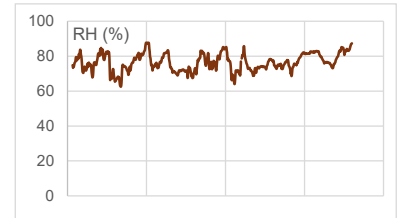
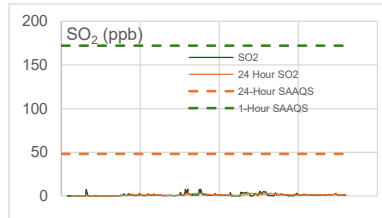
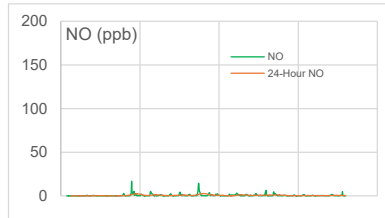
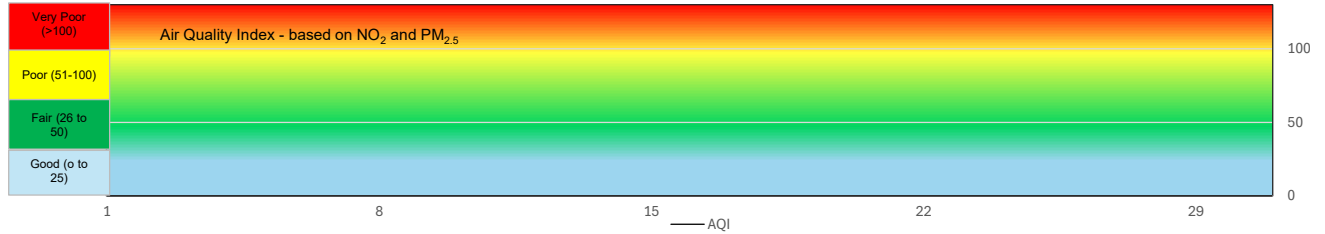
- * All data has been zero drift and baseline corrected, when required. Data may change after final validation process.
- * All compliance parameters were within the Saskatchewan Ambient Air Quality Standards.
- * All compliance parameters were more than 90% operational for the month, except for PM_{2.5}.
- * A total of 415 hours of PM_{2.5} data intermittent throughout the month were flagged as "analyzer malfunction," resulting in missing and flatlined data.
- * A total of 64 hours of H₂S and SO₂ data intermittent throughout the month were flagged as "analyzer malfunction," resulting in missing and flatlined data.
- * One hour of data were flagged for all gas analyzers due to daily IZS checks, resulting in the loss of one hour of data each day.
- * Quarterly calibrations were completed on December 1 and 3, 2025.



SESAA Stoughton Station - November 2025 Summary Report

Pollutants		Month Records		24 Hour Records				1 Hour Records			
Name	Unit	Average Concentration	Uptime	Maximum		SAAQS*	Exceedance Days	Maximum		SAAQS*	Exceed Hours
				Conc.	Date			Conc.	Date and Time		
NO	ppb	0.7	79.0%	2.7	12/15/2025	-	-	16.8	12/8/2025 11:00 AM	-	-
NO ₂	ppb	1.6	79.0%	6.7	12/8/2025	106	0	15.9	12/19/2025 4:00 PM	159	0
NO _x	ppb	2.2	79.0%	9.0	12/8/2025	-	-	31.0	12/8/2025 11:00 AM	-	-
SO ₂	ppb	1.2	87.1%	2.8	12/22/2025	48	0	7.9	12/14/2025 8:00 AM	172	0
H ₂ S	ppb	1.0	93.3%	1.6	12/15/2025	3.6	0	2.9	12/31/2025 10:00 PM	11	0
PM _{2.5}	µg/m ³	No Data	0.0%	0.0	-	28	0	No Data	-	-	-

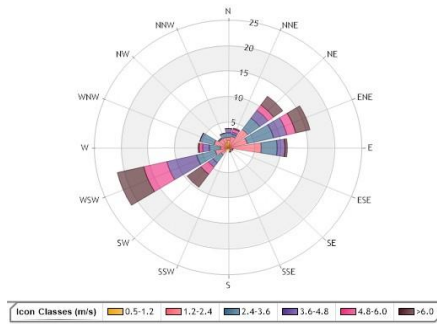
SAAQS: Saskatchewan Ambient Air Quality Standards



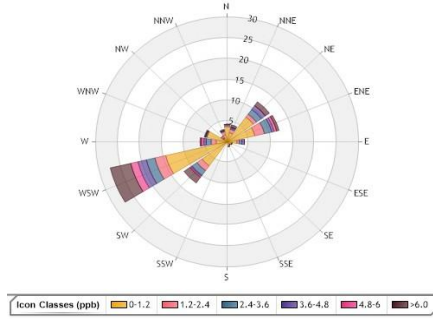
SESAA Stoughton Station - November 2025 Summary Report

Exceedance Summary

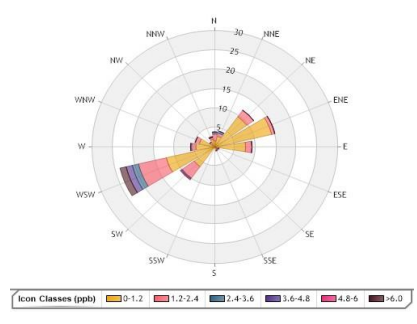
Exceedance Summary			Summary of other Parameters during Exceedance							
Pollutant	Date	Conc.	WS	WD	H ₂ S	NO	NO ₂	NO _x	SO ₂	PM _{2.5}



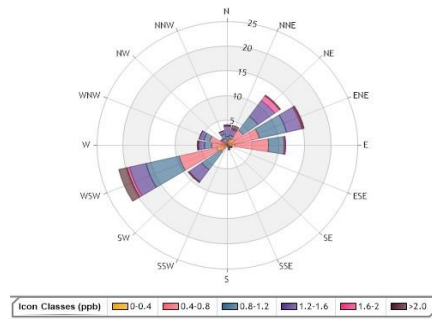
Wind Rose



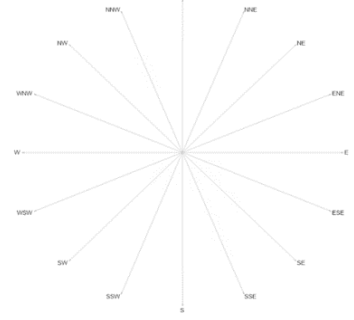
NO₂ Pollution Rose



SO₂ Pollution Rose



H₂S Pollution Rose



PM_{2.5} Pollution Rose

Parameters	Unit	Color Code for Wind Speed and Pollutant Concentration Class						
Wind Speed	m/s	0.5 -W- 1.2	1.2 -W- 2.4	2.4 -W- 3.6	3.6 -W- 4.8	4.8 -W- 6.0	W > 6.0	
NO ₂	ppb	0.0 -C- 1.2	1.2 -C- 2.4	2.4 -C- 3.6	3.6 -C- 4.8	4.8 -C- 6.0	C > 6.0	
SO ₂	ppb	0.0 -C- 1.2	1.2 -C- 2.4	2.4 -C- 3.6	3.6 -C- 4.8	4.8 -C- 6.0	C > 6.0	
H ₂ S	ppb	0.0-C-0.4	0.4-C-0.8	0.8-C-1.2	1.2-C-1.6	1.6-C-2.0	C > 2.0	
PM _{2.5}	µg/m ³	N/A	N/A	N/A	N/A	N/A	N/A	

Monthly Update

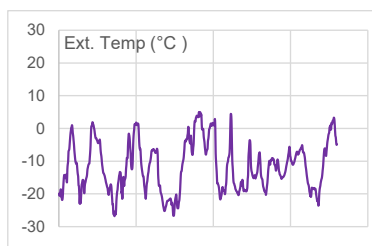
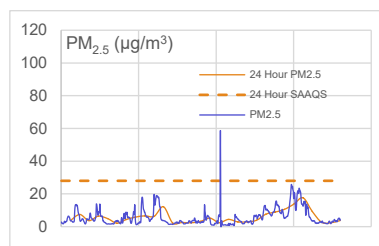
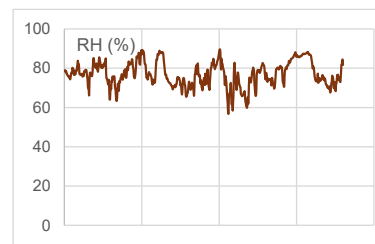
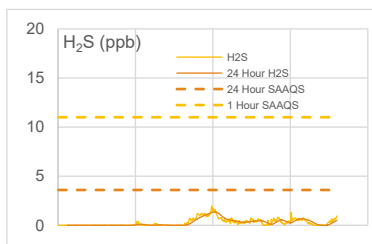
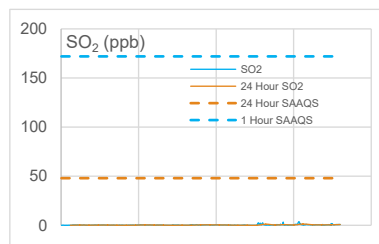
- * All data has been zero drift and baseline corrected, when required. Data may change after final validation process.
- * All compliance parameters were within the Saskatchewan Ambient Air Quality Standards.
- * All compliance parameters were less than 90% operational for the month except for H₂S.
- * A total of 124 hours of NO_x data were flagged due to the analyzer being powered on without calibration, resulting in missing or flatlined data.
- * A total of 64 hours of SO₂ data were flagged due to the analyzer being powered on without calibration, resulting in missing or flatlined data.
- * The NO₂ & H₂S permeation tubes were unstable, and as a result, daily span checks were not included in the data process.
- * One hour of data were flagged for all gas analyzers due to daily IZS checks, resulting in the loss of one hour of data each day.
- * Quarterly calibrations were completed on December, 2025.
- * PM_{2.5} was removed from service for repair. Weather station was removed on July 28, 2025. System was shut down on July 31, 2025.



SESAA Torquay Station - December 2025 Summary Report

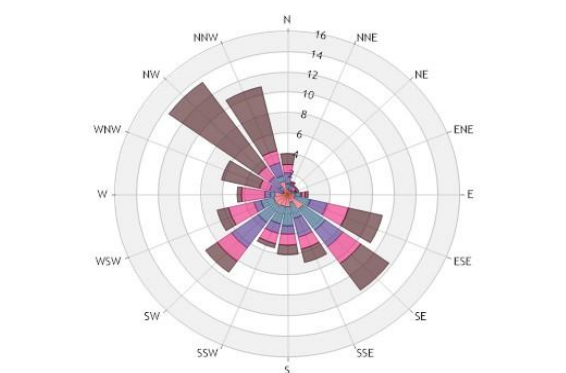
Pollutants		Month Records		24 Hour Records				1 Hour Records			
Name	Unit	Average Concentration	Uptime	Maximum		SAAQS*	Exceedance Days	Maximum		SAAQS*	Exceed Hours
				Conc.	Date			Conc.	Date and Time		
SO ₂	ppb	0.4	95.8%	1.3	12/26/2025	48	0	4.3	12/31/2025 2:00 PM	172	0
H ₂ S	ppb	0.3	95.8%	1.3	12/17/2025	3.6	0	2.0	12/17/2025 1:00 PM	11	0
PM _{2.5}	µg/m ³	5.6	99.7%	17.6	12/26/2025	28	0	58.7	12/18/2025 3:00 AM	-	-

SAAQS: Saskatchewan Ambient Air Quality Standards

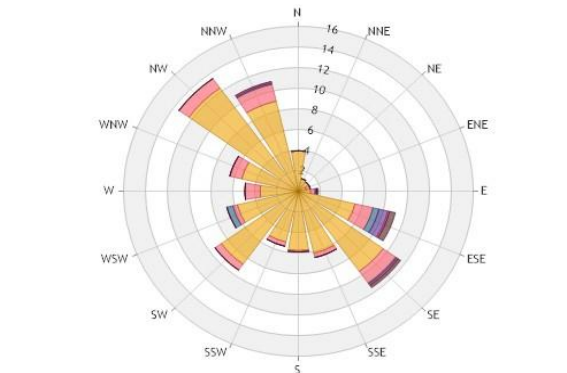


Exceedance Summary								
24-hour Exceedance Information			Summary of other Parameters during Exceedance					
Pollutant	Date	Conc.	WS	WD	Precip.	SO ₂	H ₂ S	PM _{2.5}

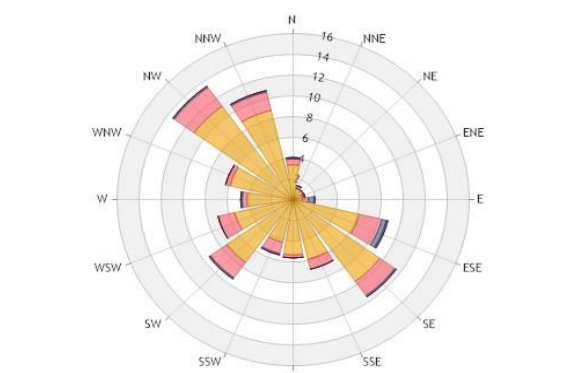
SESAA Torquay Station - December 2025 Summary Report



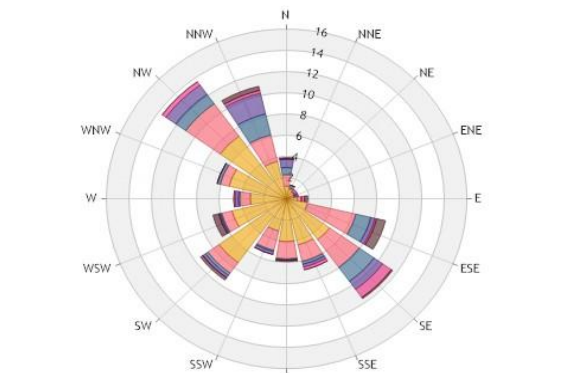
Wind Rose



Pollution Rose SO₂



Pollution Rose H₂S



Pollution Rose PM_{2.5}

Parameters	Unit	Color Code for Wind Speed and Pollutant Concentration Class						
Wind Speed	m/s	0.5 -W- 1.2	1.2 -W- 2.4	2.4 -W- 3.6	3.6 -W- 4.8	4.8 -W- 6.0	W > 6.0	
SO ₂	ppb	0.0-C-0.6	0.6-C-1.2	1.2-C-1.8	1.8-C-2.4	2.4-C-3.0	C > 3.0	
H ₂ S	ppb	0.0-C-0.6	0.6-C-1.2	1.2-C-1.8	1.8-C-2.4	2.4-C-3.0	C > 3.0	
PM _{2.5}	ug/m ³	0.0-C-4.0	4.0-C-8.0	8.0-C-12.0	12.0-C-16.0	16.0-C-20.0	C > 20.0	

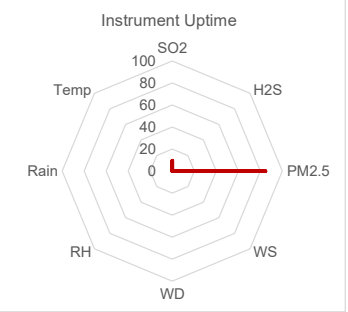
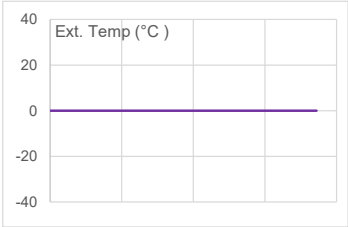
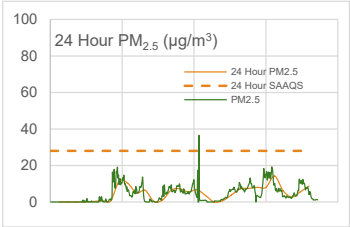
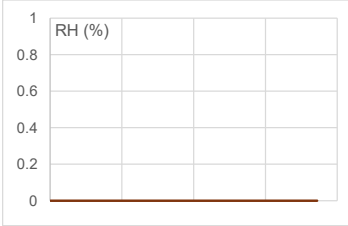
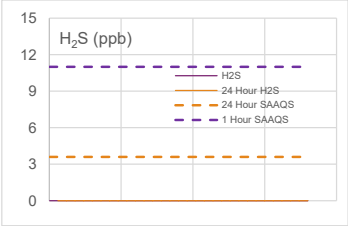
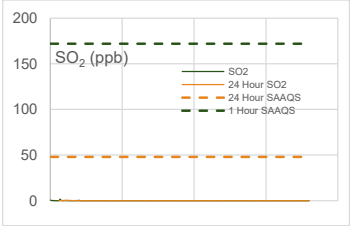
Monthly Update

- * All data has been zero drift and baseline corrected, where required. Data may change after final validation process.
- * All compliance parameters were within the Saskatchewan Ambient Air Quality Standards.
- * All compliance parameters were more than 90% operational for the month.
- * H₂S monitor reinstalled on November 27, 2025 and no permeation tube available for daily span check.
- * One hour of data were flagged for all gas analyzers due to daily IZS checks, resulting in the loss of one hour of data each day.
- * Most recent quarterly calibrations were completed on November 27, 2025.



SESAA Wauchope Station - December 2025 Summary Report											
Pollutants		Month Records		24 Hour Records				1 Hour Records			
Name	Unit	Average Concentration	Uptime	Maximum		SAAQS*	Exceedance Days	Maximum		SAAQS*	Exceed Hours
				Conc.	Date			Conc.	Date and Time		
SO ₂	ppb	0.2	9.4%	0.4	12/2/2025	48	0	1.7	12/2/2025 3:00 AM	172	0
H ₂ S	ppb	No Data	0.0%	0.0	NA	3.6	0	No Data	NA	11	0
PM _{2.5}	µg/m ³	5.3	84.7%	14.2	12/26/2025	28	0	36.5	12/18/2025 6:00 AM	-	-

SAAQS: Saskatchewan Ambient Air Quality Standards

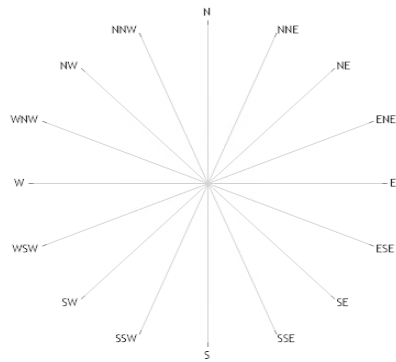


Exceedance Summary (24-Hour Average)									
24-hour Exceedance Information				Summary of other Parameters during Exceedance					
Pollutant	Date	Conc.		WS	WD	Precip.	SO ₂	H ₂ S	PM _{2.5}

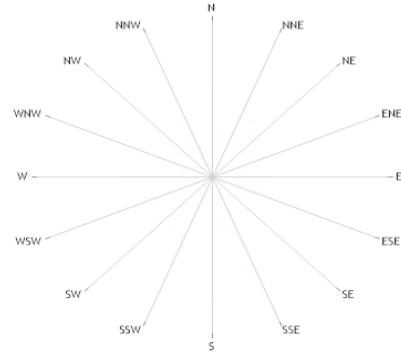
SESAA Wauchope Station - December 2025 Summary Report

Exceedance Summary (1-Hour Average)

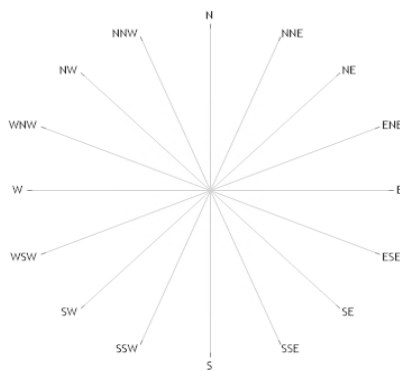
1-hour Exceedance Information			Summary of Other Parameters During Exceedance					
Pollutant	Date and Time	Conc.	WS	WD	Precip.	SO ₂	H ₂ S	PM _{2.5}



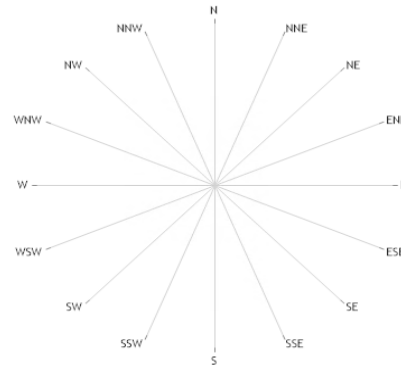
Wind Rose



Pollution Rose SO₂



Pollution Rose H₂S



Pollution Rose PM_{2.5}

Parameters	Unit	Color Code for Wind Speed and Pollutant Concentration Class						
Wind Speed	m/s	N/A	N/A	N/A	N/A	N/A	N/A	N/A
SO ₂	ppb	N/A	N/A	N/A	N/A	N/A	N/A	N/A
H ₂ S	ppb	N/A	N/A	N/A	N/A	N/A	N/A	N/A
PM _{2.5}	µg/m ³	N/A	N/A	N/A	N/A	N/A	N/A	N/A

Monthly Update

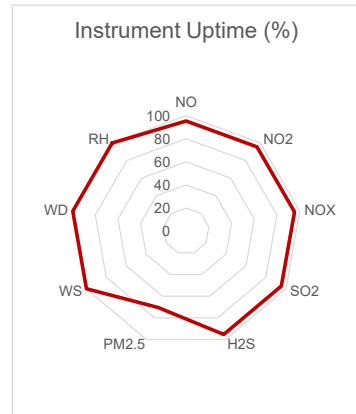
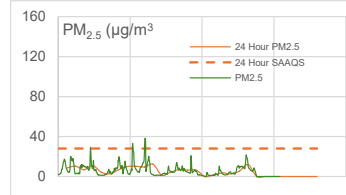
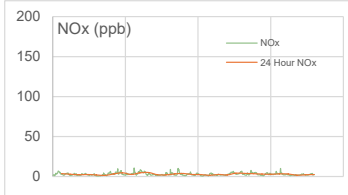
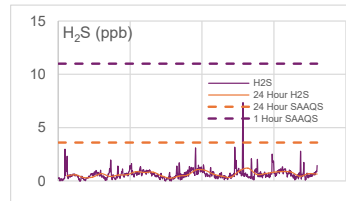
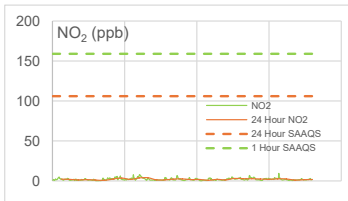
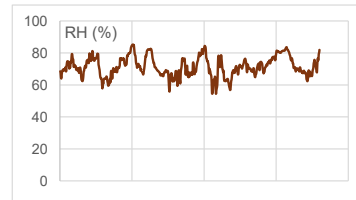
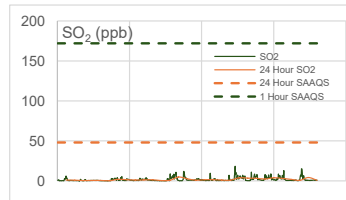
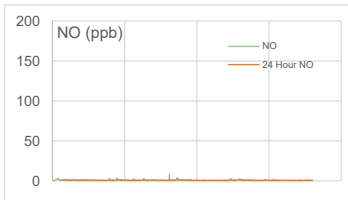
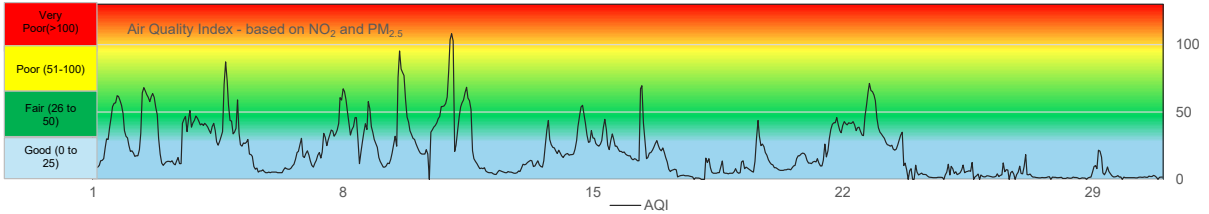
- * All data has been zero baseline corrected, when required. Data may change after final validation process.
- * All compliance parameters were within the Saskatchewan Ambient Air Quality Standards.
- * All compliance parameters were less 90% operational for the month.
- * A total of 744 hours of data flagged as "analyzer failure" for WS/WD.
- * A total of 744 and 670 hours of data flagged as analyzer malfunctioning for H₂S and SO₂.
- * A total of 110 hours of data flagged as analyzer malfunctioning for PM_{2.5}.
- * One hour of data were flagged for all gas analyzers due to daily IZS checks, resulting in the loss of one hour of data each day.



SESAA Weyburn Station - December 2025 Summary Report

Pollutants		Month Records		24 Hour Records				1 Hour Records			
Name	Unit	Average Concentration	Uptime	Maximum		SAAQS*	Exceedance Days	Maximum		SAAQS*	Exceed Hours
				Conc.	Date			Conc.	Date and Time		
NO	ppb	0.8	95.4%	1.3	12/1/2025	-	-	7.7	12/14/2025 12:00 PM	-	-
NO ₂	ppb	2.0	95.4%	4.0	12/11/2025	106	0	9.5	12/27/2025 3:00 AM	159	0
NO _x	ppb	2.9	95.4%	5.0	12/11/2025	-	-	10.7	12/10/2025 8:00 AM	-	-
SO ₂	ppb	1.7	95.3%	4.8	12/14/2025	48	0	18.3	12/21/2025 1:00 PM	172	0
H ₂ S	ppb	0.7	95.3%	1.2	12/22/2025	3.6	0	7.4	12/22/2025 10:00 AM	11	0
PM _{2.5}	µg/m ³	6.8	70.6%	12.3	12/11/2025	28	0	38.4	12/11/2025 2:00 AM	-	-

SAAQS: Saskatchewan Ambient Air Quality Standards



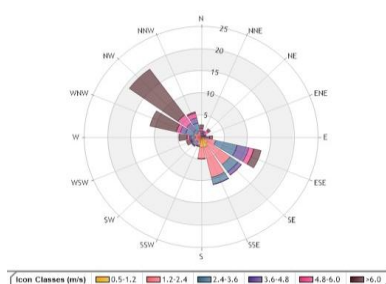
SESAA Weyburn Station - December 2025 Summary Report

Exceedance Summary (24-Hours Average)

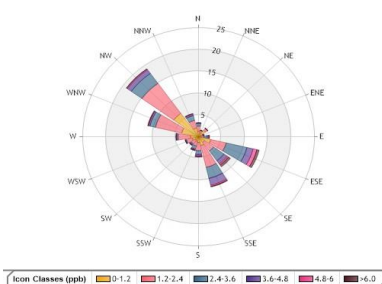
24-hours Exceedance Information			Summary of other Parameters during Exceedance							
Pollutant	Date	Conc.	WS	WD	H ₂ S	NO	NO ₂	NOx	SO ₂	PM _{2.5}

Exceedance Summary (1-Hour Average)

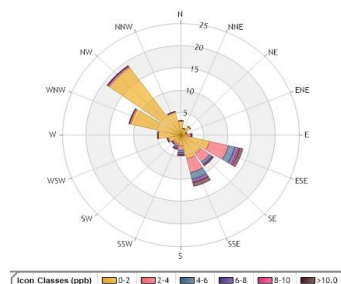
1-hour Exceedance Information			Summary of Other Parameters During Exceedance					
Pollutant	Date and Time	Conc.	WS	WD	Precip.	SO ₂	NO ₂	PM _{2.5}



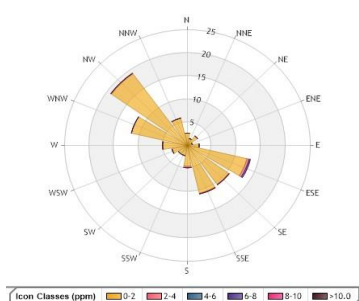
Wind Rose



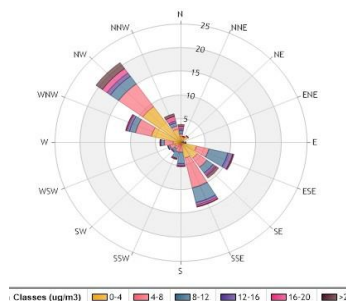
NO₂ Pollution Rose



SO₂ Pollution Rose



H₂S Pollution Rose



PM_{2.5} Pollution Rose

Parameters	Unit	Color Code for Wind Speed and Pollutant Concentration Class						
Wind Speed	m/s	0.5-W-1.2	1.2-W-2.4	2.4-W-3.6	3.6-W-4.8	4.8-W-6.0	W > 6.0	
NO ₂	ppb	0.0-C-1.2	1.2-C-2.4	2.4-C-3.6	3.6-C-4.8	4.8-C-6.0	C > 6.0	
SO ₂	ppb	0.0-C-2.0	2.0-C-4.0	4.0-C-6.0	6.0-C-8.0	8.0-C-10.0	C > 10.0	
H ₂ S	ppb	0.0-C-2.0	2.0-C-4.0	4.0-C-6.0	6.0-C-8.0	8.0-C-10.0	C > 10.0	
PM _{2.5}	µg/m ³	0.0-C-4.0	4.0-C-8.0	8.0-C-12.0	12.0-C-16.0	16.0-C-20.0	C > 20.0	

Monthly Update

- * All data has been zero drift and baseline corrected, where required. Data may change after final validation process.
- * All compliance parameters were within the Saskatchewan Ambient Air Quality Standards.
- * All compliance parameters were more than 90% operational for the month with the exception of PM_{2.5}.
- * PM_{2.5} monitor malfunctioned starting December 24, 2025, the cause is currently unknown.
- * One hour of data were flagged for all gas analyzers due to daily IZS checks, resulting in the loss of one hour of data each day.
- * The SO₂ and NO₂ permeation tube was depleted, and as a result, daily span checks were not included in the data process.
- * Most recent quarterly calibrations were completed on November 26, 2025.
- * The AQI is based on the highest pollutant-specific AQI (PM_{2.5}).

